

Efficacy Analysis of Adjuvant Chemotherapy with Gemcitabine Plus Platinum or S-1 in Biliary Tract Carcinoma: A Multi-Center Retrospective Study

This article was published in the following Dove Press journal:
Cancer Management and Research

Huan Gao,¹ Tao Tian,¹ Suoni Li,² Yinbin Zhang,³ Xiao Fu,¹ Xiaoqiang Zheng,¹ Na Liu,¹ Aimin Jiang,¹ Mengdi Ren,¹ Xiaoni Zhang,¹ Xuan Liang,¹ Zhiping Ruan,¹ Zhimin Geng,^{4,*} Yu Yao^{1,*}

¹Department of Medical Oncology, The First Affiliated Hospital of Xi'an Jiaotong University, Xi'an, People's Republic of China; ²Department of Medical Oncology, Tumor Hospital of Shaanxi, Xi'an, People's Republic of China; ³Department of Oncology, The Second Affiliated Hospital of Xi'an Jiaotong University, Xi'an, People's Republic of China; ⁴Department of Hepatobiliary Surgery, The First Affiliated Hospital of Xi'an Jiaotong University, Xi'an, People's Republic of China

*These authors contributed equally to this work

Purpose: Biliary tract cancers (BTCs) have a poor overall prognosis, as patients who underwent curative surgery frequently experience disease recurrence. At present, there is a paucity of well-documented adjuvant chemotherapy regimen. This study aimed to assess whether gemcitabine plus platinum or S-1 adjuvant chemotherapy have different impact on relapse-free survival (RFS).

Patients and Methods: We selected patients undergoing radical biliary tract cancer surgery, pathologically confirmed adenocarcinoma and received gemcitabine plus platinum (cisplatin or oxaliplatin) or S-1 adjuvant chemotherapy from September 2013 to May 2020. The primary study endpoint was RFS. The secondary endpoint was safety.

Results: Overall 136 patients were enrolled. The median follow-up was 32.3 months and the median RFS was 17.0 months (95% CI 8.9–25.1). The median RFS was 14.1 months (95% CI 6.7–21.5) in gemcitabine plus platinum group and 33.0 months (95% CI 9.3–56.7) in gemcitabine plus S-1 (GS) group, a non-significant difference both in univariate ($P=0.092$) and in multivariate analysis ($P=0.058$). Lymph node status (N- vs N+: HR=0.477, 95% CI 0.285–0.799; $P=0.005$) and chemotherapy cycles (<6 vs 6–8: HR=1.828, 95% CI 1.117–2.993; $P=0.016$) were independent impact factors for RFS. GS group had lower incidence of adverse reactions.

Conclusion: Compared with gemcitabine plus platinum, GS regimen has a tendency to obtain longer RFS (although there is no statistically significant difference) and less toxic. GS regimen has the potential to be investigated as a standard regimen for adjuvant chemotherapy.

Keywords: biliary tract cancer, adjuvant chemotherapy, gemcitabine, platinum, S-1

Introduction

Biliary tract cancers (BTCs) include intrahepatic cholangiocarcinomas (iCCAs), hilar cholangiocarcinomas (hCCAs), distal cholangiocarcinomas (dCCAs) and gallbladder carcinomas (GBCs). Although the incidence of BTCs is relatively low, it has shown an upward trend in recent years. In 2019, approximately 12,360 patients with new biliary system tumors were diagnosed in the United States and 3,960 died.¹ Cancer statistics in China in 2015 were even grimmer, with about 52,800 new cases of GBCs and 40,700 deaths.² BTCs have a poor overall prognosis, and surgery is the only curable means. However, for those who have had curative surgical resection also experience a recurrence, the 5-year overall survival rate is only approximately 20%,³ suggesting adjuvant chemotherapy plays an important role in the treatment of BTCs.

Correspondence: Yu Yao
Department of Medical Oncology, The First Affiliated Hospital of Xi'an Jiaotong University, No. 277 Yanta West Road, Xi'an, Shaanxi 710061, People's Republic of China
Tel/Fax +86-29-85323422
Email 13572101611@163.com

Zhimin Geng
Department of Hepatobiliary Surgery, The First Affiliated Hospital of Xi'an Jiaotong University, No. 277 Yanta West Road, Xi'an, Shaanxi 710061, People's Republic of China
Tel/Fax +86-29-85323893
Email gengzhimin@mail.xjtu.edu.cn

In advanced BTCs, ABC-02 study laid the foundation for gemcitabine plus cisplatin (GP) as the standard regimen for first-line chemotherapy,⁴ indicating BTCs is a chemotherapy-sensitive malignant tumor and GP regimen has good anticancer activity for biliary system tumors. Some studies showed that the combination of gemcitabine and oxaliplatin (GEMOX) has good activity in advanced BTCs^{5–8} and GEMOX was used as the matched group in randomized trials in patients who could not be resected.^{9–12} A Phase III trial (JCOG1113) demonstrated gemcitabine plus S-1 (GS) combination therapy is noninferior to gemcitabine plus cisplatin combination therapy in advanced BTCs (median overall survival [mOS]: 13.4 months in GP vs 15.1 months in GS, HR 0.95; 90% CI 0.78–1.15; P=0.046).¹³ Another randomized phase III study compared gemcitabine, cisplatin and S-1 (GCS) to gemcitabine and cisplatin at first-line chemotherapy, suggested GCS could be considered a new standard treatment (mOS: 13.5 months in GCS vs 12.6 months in GP, HR 0.79; 95% CI 0.60–1.04; P=0.046).¹⁴

Due to the low incidence and few clinical studies, there is a paucity of well-documented adjuvant chemotherapy regimens. A meta-analysis showed a potential benefit of adjuvant chemotherapy in patients with BTCs, especially in the patients with positive lymph nodes.³ Therefore, the researchers tried to apply the first-line regimens to adjuvant settings. It has been proved in a phase II study that adjuvant chemotherapy with gemcitabine with or without cisplatin was well tolerated and resulted in promising survival of the patients.¹⁵ However, the BCAT clinical trial in Japan showed no significant difference in overall survival (OS) and relapse-free survival (RFS) between gemcitabine group and observation group.¹⁶ Another phase III trial compared adjuvant GEMOX regimen with surveillance in resected biliary tract cancer, the result showing no significant difference.¹⁷ Capecitabine has shown positive results in BILCAP clinical studies,¹⁸ and S-1, also a precursor of fluorouracil, has been shown to be effective in a variety of tumor species. In the KHBO-1208 Phase II clinical trial, the efficacy of S-1 in adjuvant chemotherapy for biliary cancer was demonstrated to be superior to gemcitabine alone.¹⁹

The ACTICCA-1 study is a Phase III, randomized, multicenter clinical study comparing gemcitabine and cisplatin to capecitabine after curative intent resection of cholangiocarcinoma and muscle invasive GBCs.²⁰ The results of the study are yet to be published. Researchers are exploring adjuvant chemotherapy for biliary tract cancer, but at present, there are few evidence-based adjuvant chemotherapy regimens and studies. This study was aimed

to assess whether gemcitabine plus platinum or S-1 adjuvant chemotherapy have different efficiency in RFS.

Patients and Methods

This retrospective study reviewed the records of patients who underwent curative resection of BTCs in the First Affiliated Hospital of Xi'an Jiaotong University, the Second Affiliated Hospital of Xi'an Jiaotong University and Tumor Hospital of Shaanxi (Shaanxi Province, China) from September 2013 to May 2020. All patients had histologically confirmed gallbladder or bile duct adenocarcinoma, and were treated with GP, GEMOX or GS adjuvant chemotherapy during the study period. None of the enrolled patients had received prior anti-cancer treatment. Collected relevant clinicopathological information including age, gender, Eastern Cooperative Oncology Group performance status (ECOG PS), comorbidity, tumor site, TNM-stage, T stage, lymph node involvement, pathological differentiation, chemotherapy regimens and chemotherapy cycles. Comorbidity was defined as having one or more diseases listed in the Charlson Comorbidity Index. Gemcitabine was given through intravenous drip at 1000 mg/m² on day 1 and 8. Cisplatin was given through intravenous injection at 25 mg/m² for consecutive 3 days or 75mg/m² on day 1. Oxaliplatin was given through intravenous drip at 130mg/m² on day 1. S-1 was administered orally at a dose of 80 mg/m²/d for continuous 14 days, followed by a 1-week rest period. Treatment was repeated every 3 weeks. All patients received at most 8 chemotherapy cycles until disease progression, unacceptable toxicity or other patient rejection.

Imaging examination, computerized tomography (CT), was performed every 2 cycles. Serum tumor markers were measured at baseline and every 1–2 cycle. CA19-9 normal reference range was 0–39 U/mL. We took the average of CA19-9 multiples of change after 2 cycles of chemotherapy as the cut-off value. The primary endpoint of the study was RFS, defined by the time from surgery to recurrence (local or distant) or death from any cause. Adverse events were graded according to the National Cancer Institute Common Terminology Criteria for Adverse Events (NCI-CTCAE) version 3.0. To increase the completeness of information, adverse reactions were obtained from medical records, laboratory tests during treatment and follow up.

Statistical Analysis

All statistical analysis was performed by using SPSS 18.0 software. Baseline characteristics were counted by descriptive analysis. The Chi-square test was utilized to compare the

distribution between groups, the Kaplan–Meier method was used for univariate analysis, Cox regression model was used for multivariate analysis. GraphPad Prism 5.0 software was used to draw survival curve, to investigate the relationship between clinicopathological data and RFS. Subgroup analysis was conducted to investigate whether there are significant differences between different chemotherapy regimens in subgroups with different characteristic. $P < 0.05$ was considered statistically significant.

Results

Patient Characteristics

A total of 893 patients were screened, and 136 patients were finally enrolled (Figure 1). Patients' characteristics were evenly distributed between the study groups (Table 1). The

median age of patients was 58 (range 32–74) years. Male and female patients accounted for 33% and 67% respectively. The majority of the tumors were gallbladder cancer (58%) and 71% were at the stage of T3 and T4. 35% of patients were accompanied by other underlying diseases and 36% were lymph node involvement. All patients had a ECOG PS score of 0–1. There were 81 patients in GP/GEMOX group and 55 in GS group respectively. The median of chemotherapy cycles patients received was 5 cycles. Due to the incompleteness of laboratory data, we analyzed the serum CA19-9 levels of 55 patients with complete data. The initial median serum CA19-9 level was 14.7 U/mL (range 0.6–430.7 U/mL).

Survival

With a median follow-up of 32.3 months, the median RFS was 17.0 months (95% CI 8.9–25.1) and the median OS was 30.8

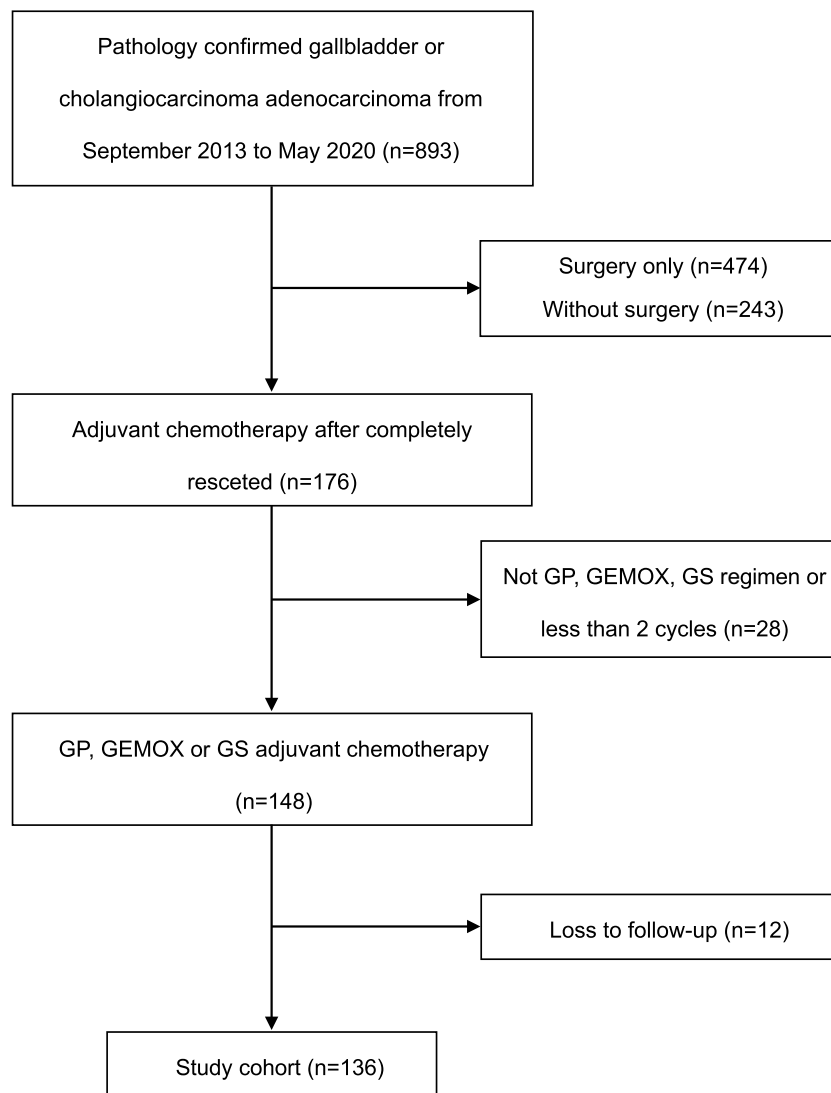


Figure 1 Flow chart of patient enrolment.

Table 1 Clinicopathological Characteristics of 136 Patients Enrolled

Clinicopathological Features	GP/GEMOX (n =81)	GS (n =55)	P value
Gender			0.941
Male	27(33%)	18(33%)	
Female	54(67%)	37(67%)	
Age			0.600
≤58	42(52%)	26(47%)	
>58	39(48%)	29(53%)	
>65*	9(11%)	11(20%)	0.151
ECOG PS			0.343
0	33(41%)	18(33%)	
I	48(59%)	37(67%)	
Comorbidity			0.561
No	54(67%)	34(62%)	
Yes	27(33%)	21(38%)	
Tumor site			0.710
Gallbladder	46(57%)	33(60%)	
Bile duct	35(43%)	22(40%)	
TNM-stage			0.461
I-II	30(37%)	17(31%)	
III-IVA	51(63%)	38(69%)	
T-stage			0.284
T1-T2	26(32%)	13(24%)	
T3-T4	55(68%)	42(76%)	
Lymph node			0.667
N-	53(65%)	34(62%)	
N+	28(35%)	21(38%)	
Pathological differentiation			0.803
Well-moderately	46(57%)	32(58%)	
Poor	27(33%)	16(29%)	
Unknown	8(10%)	7(13%)	
Chemotherapy cycles			0.464
<6	42(52%)	25(45%)	
6-8	39(48%)	30(55%)	

Note: *Considering the toxicity of platinoids, it was also compared in elderly patients over 65 years old.

Abbreviations: ECOG PS, Eastern Cooperative Oncology Group performance status; GP, gemcitabine plus cisplatin; GEMOX, gemcitabine plus oxaliplatin; GS, gemcitabine plus S-I; N-, lymph node negative; N+, lymph node positive.

months (95% CI 19.6–42.0). A total of 81 progress events occurred. The results of univariate analysis suggested that there was no significant difference in RFS according to the gender, age, ECOG PS, comorbidity, tumor site, TNM-stage, T-stage, pathological differentiation and chemotherapy regimen, while lymph node involvement ($P=0.013$) and

chemotherapy cycles ($P=0.036$) were associated with RFS (shown in Table 2). In 55 patients with complete laboratory data, baseline CA19-9 levels >39 U/mL ($P=0.001$) and with a doubling of CA19-9 after 2 cycles chemotherapy ($P=0.021$) were associated with a shorter RFS (shown in Table 2). The median RFS was 14.1 months (95% CI 6.7–21.5) in GP/GEMOX group and 33.0 months (95% CI 9.3–56.7) in GS group. The Kaplan–Meier curve is shown in Figure 2. The 1-year, 2-year and 3-year RFS rates in GS group were 68.6%, 53.9% and 51.5%, and in GP/GEMOX group were 55.7%, 39.4% and 33.4%. The median OS was not reached in GS group and 24.5 months in GP/GEMOX group ($P=0.142$). Results of Cox multivariate analysis showed no significant difference in RFS between the two treatment groups (GS vs GP/GEMOX: HR=0.627, 95% CI 0.387–1.016, $P=0.058$). Lymph node status (N- vs N+: HR=0.477, 95% CI 0.285–0.799; $P=0.005$) and chemotherapy cycles (<6 vs 6–8: HR=1.828, 95% CI 1.117–2.993; $P=0.016$) were independent impact factors for RFS (shown in Table 3). The Kaplan–Meier curve is shown in Figure 3A and B. Considering the intersection of Kaplan–Meier Curves based on chemotherapy cycles, we performed landmark analysis. Before 38 months, the RFS of patients in 6–8 cycles group is better than that in <6 cycles group ($P=0.036$), but after 38 months, there is no significant difference between the two groups (shown in Figure 4).

Exploratory Subgroup Analysis

From the analysis, GS benefit was consistent across these cohorts: female (HR=0.531, 95% CI 0.288–0.979; $P=0.042$), no comorbidity (HR=0.389, 95% CI 0.188–0.804; $P=0.011$), III–IVA (HR=0.487, 95% CI 0.262–0.906; $P=0.023$) and well-moderately differentiation (HR=0.462, 95% CI 0.218–0.981; $P=0.044$) (shown in Figure 5).

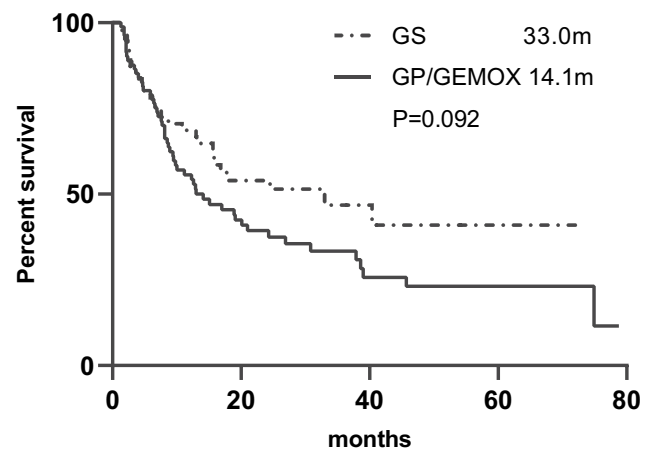
Adverse Events

Hematologic and non-hematologic adverse events of grade 3–4 are shown in Table 4. The incidence of neutropenia was 17% and thrombocytopenia was 13% in all patients with hematological toxicity. The most significant non-hematological adverse events were nausea (13%) and vomiting (13%). Between the two treatment groups, there were significant differences in the adverse reactions of neutropenia ($P=0.013$), nausea ($P=0.041$) and vomiting ($P=0.010$). Adverse reactions of GS group were globally lower.

Table 2 Univariate Analysis of Clinicopathological Factors Associated with RFS

Clinicopathological Features	mRFS (Month,95% CI)	P value
Gender		0.330
Male	21.0(8.3–33.7)	
Female	14.1(8.3–20.0)	
Age		0.769
≤58	19.1(9.8–28.4)	
>58	15.6(7.5–23.7)	
ECOG PS		0.215
0	26.9(11.2–42.6)	
I	15.6(9.4–21.8)	
Comorbidity		0.254
No	24.3(4.7–43.9)	
Yes	15.8(9.8–21.8)	
Tumor site		0.945
Gallbladder	15.9(8.8–23.0)	
Bile duct	18.9(9.9–27.9)	
TNM-stage		0.071
I–II	26.9(6.5–47.3)	
III–IVA	13.0(5.9–20.1)	
T-stage		0.167
T1–T2	37.9(15.2–60.7)	
T3–T4	15.6(9.9–21.3)	
Lymph node		0.013
N-	30.8(14.3–47.3)	
N+	10.8(4.9–16.7)	
Pathological differentiation		0.471
Well-moderately	24.3(16.2–32.4)	
Poor	8.7(3.5–13.9)	
Unknown	15.9(12.7–19.1)	
Chemotherapy cycles		0.036
<6	9.5(3.9–15.1)	
6–8	24.5(9.4–39.6)	
Chemotherapy regimen		0.092
GP/GEMOX	14.1(6.7–21.5)	
GS	33.0(9.3–56.7)	
Baseline CA19-9		0.001
≤39 U/mL	19.1(16.1–22.1)	
>39 U/mL	6.6(3.4–9.8)	
CA19-9 doubled after 2 cycles chemotherapy		0.021
Yes	5.9(2.3–12.9)	
No	19.1(15.6–22.6)	

Abbreviations: ECOG PS, Eastern Cooperative Oncology Group performance status; GP, gemcitabine plus cisplatin; GEMOX, gemcitabine plus oxaliplatin; GS, gemcitabine plus S-1; N-, lymph node negative; N+, lymph node positive; mRFS, median relapse-free survival.

**Figure 2** Kaplan–Meier Curves of RFS based on chemotherapy regime.

Abbreviations: GP, gemcitabine plus cisplatin; GEMOX, gemcitabine plus oxaliplatin; GS, gemcitabine plus S-1; RFS, relapse-free survival.

Discussion

A clinical study showed that patients with postoperative adjuvant chemotherapy do not benefit from survival compared with simple surgery in BTCs.¹⁷ However, there are also studies suggesting that adjuvant chemotherapy can benefit patients with GBC after operation.^{21,22} The reasons for the inconsistency in the results of the above clinical studies may be that the incidence of biliary tract tumors is low, the inclusion of patients is insufficient, or there is a difference in the efficacy of the treatment plan itself. On the whole, we have reason to believe that adjuvant chemotherapy plays a vital role in BTCs.

National Comprehensive Cancer Network (NCCN) guidelines recommend fluoropyrimidines-based chemotherapy. Based on BILCAP study, American Society of clinical Oncology (ASCO) guidelines recommend capecitabine as an adjuvant chemotherapy regimen in BTCs.^{18,23} S-1, also as a fluorouracil drug, has been fully tried in BTCs treatment, such as JCOG-1113, KHBO-1208 and KHBO-1401 studies.^{13,14,19} In addition, the feasibility and safety of gemcitabine combined with platinum adjuvant chemotherapy in the treatment of BTCs have been confirmed by a number of studies.^{24–28} These studies suggest that gemcitabine-based adjuvant chemotherapy can benefit patients. Based on experience at first-line treatment, previous retrospective study data and small sample clinical trials, European Society for Medical Oncology (ESMO) clinical practice guidelines suggest that gemcitabine-based adjuvant chemotherapy regimen were

Table 3 Multivariate Cox Proportional Hazards Model of RFS

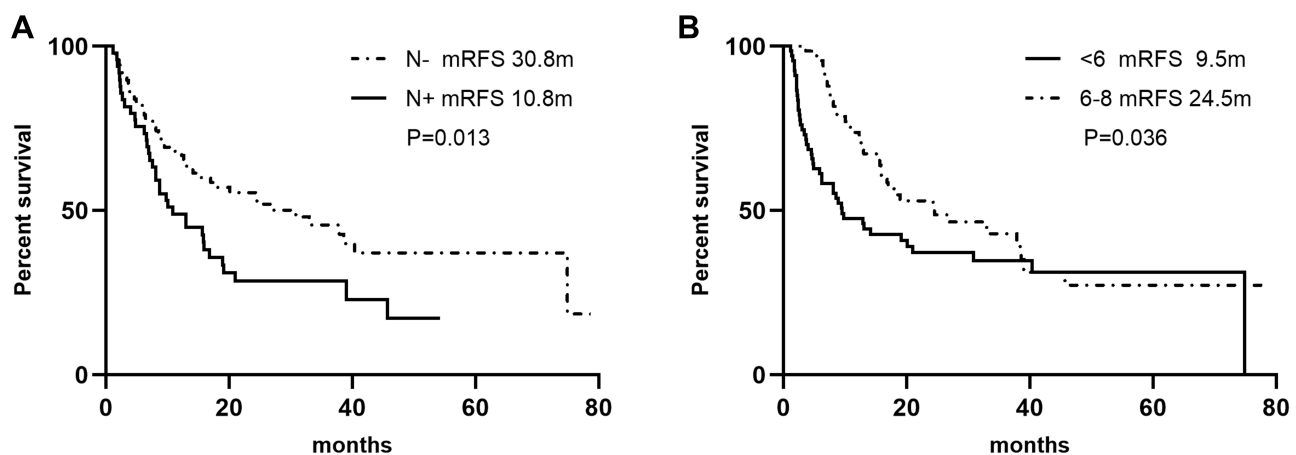
Variables		HR	95% CI	P value
Gender	Male vs female	0.764	0.441–1.323	0.337
Age	≤58 vs >58	1.235	0.755–2.020	0.401
ECOG PS	0 vs I	0.675	0.401–1.134	0.137
Comorbidity	No vs yes	0.870	0.540–1.402	0.567
Tumor site	Gallbladder vs bile duct	0.914	0.543–1.538	0.735
TNM-stage	I–II vs III–IVA	1.149	0.565–2.334	0.701
T-stage	T1–T2 vs T3–T4	0.650	0.364–1.159	0.145
Lymph node	N- vs N+	0.477	0.285–0.799	0.005
Pathological differentiation	Poor vs well-moderately	1.167	0.698–1.952	0.556
	Unknown vs well-moderately	1.075	0.487–2.374	0.859
	Unknown vs poor	1.086	0.468–2.519	0.848
Chemotherapy regimen	GS vs GP/GEMOX	0.627	0.387–1.016	0.058
Chemotherapy cycles	<6 vs 6–8	1.828	1.117–2.993	0.016

Abbreviations: ECOG PS, Eastern Cooperative Oncology Group performance status; GP, gemcitabine plus cisplatin; GEMOX, gemcitabine plus oxaliplatin; GS, gemcitabine plus S-1; N-, lymph node negative; N+, lymph node positive; RFS, relapse-free survival.

optional.²⁹ We look forward to the results of the ACTICCA-1 study which compared gemcitabine plus cisplatin to capecitabine after curative intent resection of cholangiocarcinoma and muscle invasive GBCs.

This real-world study compared the efficacy of gemcitabine combined with platinum or S-1 in BTCs adjuvant chemotherapy. The median RFS of patients treated with GP/GEMOX and GS regimen were 14.1 months and 33.0 months, respectively. Although the RFS between the two treatment groups has not been statistically significant, we have seen a clear trend. P values were very near to 0.05 in both univariate ($P=0.092$) and multivariate analysis ($P=0.058$), and the magnitude of the effect was considerable (with large deltas between the median RFS, as well as

a promising HR of 0.627). This finding has also been reported in first-line chemotherapy.^{13,30} During the follow-up, we found that the patients with GS regimen had higher compliance, which may be related to the simplicity of treatment, lower adverse reactions and an intrinsic higher efficacy of S-1, so these patients could receive more cycles of treatment. The differences could not be observed may be owing to low numerosity. Patients with ECOG PS=0 were 1/3 in GS group and more than 40% in GP/GEMOX-treated group. Higher T stage appeared more frequently in GP/GEMOX group. Probably, a larger sample size would have shown as a statistically significant important benefit. In addition, multivariate analysis showed that chemotherapy cycle was an independent impact factor of RFS, but

**Figure 3** Kaplan-Meier Curves of RFS based on lymph node involvement (A) and chemotherapy cycles (B).

Abbreviations: N-, lymph node negative; N+, lymph node positive; RFS, relapse-free survival.

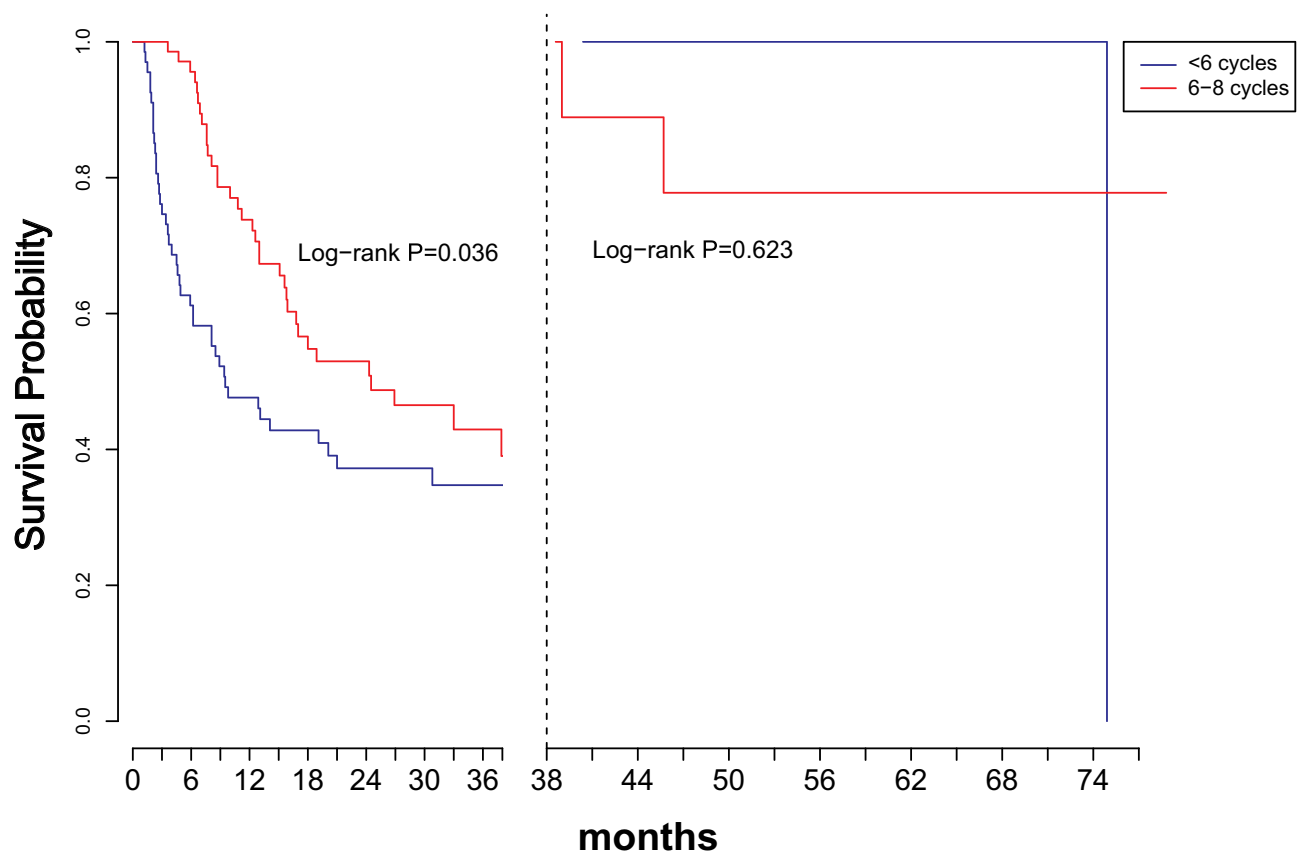


Figure 4 Landmark analysis based on chemotherapy cycles.

because of the intersection of KM curves, we performed landmark analysis. The results showed that there was significant difference between the two treatment groups before 38 months, but no significant difference after 38 months. The main reason is that the follow-up time and the number of progress events are insufficient. Prolonging the follow-up time may lead to more meaningful results. Studies have shown that the molecular biological basis of ICCs may be specific.³¹ However, in view of the small sample size of ICCAs and hCCAs, we just divided all patients into GBCs group and cholangiocarcinomas group. In subgroup analysis, it was observed that GS regimen had better RFS in specific subgroups. According to different circumstances, such as age, economic status and convenience of hospitalization, there may have been intentional choices in the formulation of the treatment plan, which our retrospective analysis failed to capture. These differences may have contributed to the benefit of GS vs GEMOX/GP in the study population and in the subgroups.

CA19-9 is the most commonly used tumor marker of biliary system in clinics. Some studies have pointed out that baseline CA19-9 level greater than 100 IU/mL is an

important prognostic factor in advanced biliary cancer first-line chemotherapy.³² Patients with CA19-9 decline of at least 25% had liminal higher objective response rates, median time to progression and median OS.³² We found a significant difference in RFS between the patients with a baseline CA19-9 greater than the normal value (39 U/mL) and the patients with a CA19-9 within the normal value ($P=0.001$). Because we expect to find the rule that can be significant to the therapeutic effect and prognosis in the early tumor marker changes, we analyzed the change of CA19-9 level after 2 cycles, that is, the first time to evaluate the therapeutic effect of chemotherapy in most patients. According to the analysis results, we found that there was a significant difference in RFS between patients whose CA19-9 level increased more than one time and patients whose RFS decreased or increased less than one time after two cycles of chemotherapy (5.9 months vs 19.1 months, $P=0.021$). However, our study is only exploratory. Only 55 patients had complete CA19-9 data before and after chemotherapy. In this part of patients, tumor located in gallbladder and different parts of the bile duct were included.

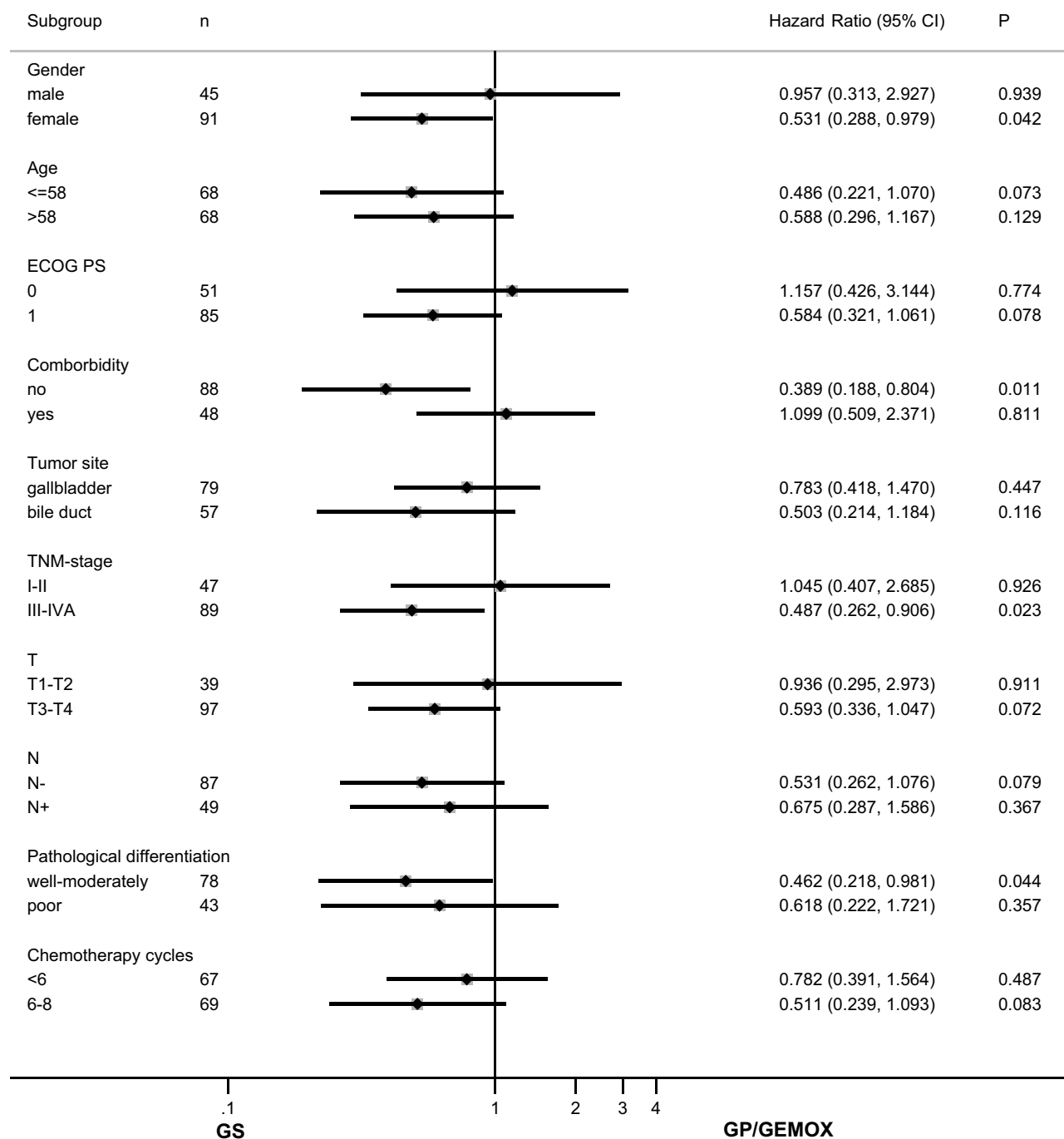


Figure 5 RFS benefits of different chemotherapy regimens in subgroups.

Abbreviations: ECOG PS, Eastern Cooperative Oncology Group performance status; GP, gemcitabine plus cisplatin; GEMOX, gemcitabine plus oxaliplatin; GS, gemcitabine plus S-I; N-, lymph node negative; N+, lymph node positive.

The study has some limitations. First of all, all the patients in this study were Chinese patients and some of them were treated with GS chemotherapy, which is rarely used in western countries (only investigational). There are also some differences in the dosage standards of drugs. For example, in Europe, both platinumoids are generally administered at doses (Cisplatin 25 mg/m²; Oxaliplatin 100 mg/m²), that are lower

than those described in our study. This may have an impact on the comparison of toxicity. According to the results of this study and statistical parameters, the total sample size was still relatively insufficient. The trend of serum tumor markers and subgroup correlation analysis was only exploratory. Secondly, these chemotherapy regimens were commonly used in the three centers. According to the results of BILCAP study,

Table 4 Treatment-Related Adverse Events

Events (Grade 3–4)	Total (N/%)	GP/ GEMOX (N/%)	GS (N/%)	P value
Hematologic toxic effects				
Neutropenia	23 (17%)	19 (23%)	4(7%)	0.013
Thrombocytopenia	17(13%)	14 (17%)	5(9%)	0.176
Hypoemia	11(8%)	8 (10%)	3(5%)	0.353
Non-hematologic toxic effects				
Fatigue	12(9%)	9 (11%)	3(5%)	0.240
Nausea	17(13%)	14 (17%)	3(5%)	0.041
Vomiting	17(13%)	15 (19%)	2(4%)	0.010
Impaired renal function	6(4%)	5 (6%)	1(2%)	0.199
Infection	2(1%)	2 (2%)	0(0%)	0.148
Increased ALT/AST	13(10%)	7 (9%)	6(11%)	0.659

Abbreviations: GP, gemcitabine plus cisplatin; GEMOX, gemcitabine plus oxaliplatin; GS, gemcitabine plus S-1; ALT, alanine aminotransferase; AST, aspartate aminotransferase.

capecitabine adjuvant chemotherapy could significantly benefit the survival of patients, although the significant prolongation of survival time may be related to the inclusion of more lymph node positive patients.¹⁸ However, due to research design, we did not include capecitabine treatment in the study this time. We hope to see the comparison of capecitabine and gemcitabine combined with platinum or S-1 in future clinical studies. Finally, the overall impact of drug adjustment due to side effects also needs to be considered. In summary, this was a retrospective study, and the number of people included was limited, so a large randomized clinical trial is needed to determine the standard regimen of adjuvant chemotherapy for biliary tract carcinoma.

Conclusion

In conclusion, compared with gemcitabine plus platinum, GS regimen has a tendency to obtain longer RFS (although there is no statistically significant difference) and lower incidence of adverse reactions. GS regimen has the potential to be investigated as a standard regimen for adjuvant chemotherapy. Our study provides reference and evidence for choosing adjuvant chemotherapy regimen for biliary tract cancer in the future. More prospective clinical trials are needed to determine the standard regimen of adjuvant chemotherapy for biliary tract cancer.

Ethics Approval and Consent to Participate

This study was conducted in accordance with the Declaration of Helsinki and was approved by the ethics committee of the

First Affiliated Hospital of Xi'an Jiaotong University (NO: XJTU1AF2019LSK-067). Due to the retrospective non-interventional research design, informed consent was obtained. In addition, we confirm that the access to patients' data complied with data protection privacy laws.

Acknowledgment

The authors thank the dedicated staff of the Department of Medical Oncology and the Department of Hepatobiliary Surgery of the First Affiliated Hospital of Xi'an Jiaotong University, the Department of Oncology of the Second Affiliated Hospital of Xi'an Jiaotong University, and the Department of Medical Oncology of Tumor Hospital of Shaanxi for their valuable work.

Funding

This research received no specific grant from any funding agency in the public, commercial, or not-for-profit sectors.

Disclosure

The authors report no conflicts of interest in this work.

References

1. Siegel RL, Miller KD, Jemal A. Cancer statistics, 2019. *CA Cancer J Clin.* 2019;69(1):7–34. doi:10.3322/caac.21551
2. Chen W, Zheng R, Baade PD, et al. Cancer statistics in China, 2015. *CA Cancer J Clin.* 2016;66(2):115–132. doi:10.3322/caac.21338
3. Horgan AM, Amir E, Walter T, Knox JJ. Adjuvant therapy in the treatment of biliary tract cancer: a systematic review and meta-analysis. *J Clin Oncol.* 2012;30(16):1934–1940. doi:10.1200/JCO.2011.40.5381
4. Valle J, Wasan H, Palmer DH, et al. Cisplatin plus gemcitabine versus gemcitabine for biliary tract cancer. *N Engl J Med.* 2010;362(14):1273–1281. doi:10.1056/NEJMoa0908721
5. André T, Reyes-Vidal JM, Fartoux L, et al. Gemcitabine and oxaliplatin in advanced biliary tract carcinoma: a phase II study. *Br J Cancer.* 2008;99(6):862–867. doi:10.1038/sj.bjc.6604628
6. Harder J, Riecken B, Kummer O, et al. Outpatient chemotherapy with gemcitabine and oxaliplatin in patients with biliary tract cancer. *Br J Cancer.* 2006;95(7):848–852. doi:10.1038/sj.bjc.6603334
7. Jang JS, Lim HY, Hwang IG, et al. Gemcitabine and oxaliplatin in patients with unresectable biliary cancer including gall bladder cancer: a Korean Cancer Study Group phase II trial. *Cancer Chemother Pharm.* 2010;65(4):641–647. doi:10.1007/s00280-009-1069-7
8. Sharma A, Dwary AD, Mohanti BK, et al. Best supportive care compared with chemotherapy for unresectable gall bladder cancer: a randomized controlled study. *J Clin Oncol.* 2010;28(30):4581–4586. doi:10.1200/JCO.2010.29.3605
9. Chen JS, Hsu C, Chiang NJ, et al. A KRAS mutation status-stratified randomized phase II trial of gemcitabine and oxaliplatin alone or in combination with cetuximab in advanced biliary tract cancer. *Ann Oncol.* 2015;26(5):943–949. doi:10.1093/annonc/mdv035
10. Lee J, Park SH, Chang HM, et al. Gemcitabine and oxaliplatin with or without erlotinib in advanced biliary-tract cancer: a multicentre, open-label, randomised, phase 3 study. *Lancet Oncol.* 2012;13(2):181–188. doi:10.1016/S1470-2045(11)70301-1

11. Leone F, Marino D, Cereda S, et al. Panitumumab in combination with gemcitabine and oxaliplatin does not prolong survival in wild-type KRAS advanced biliary tract cancer: a randomized phase 2 trial (Vecti-BIL study). *Cancer*. 2016;122(4):574–581. doi:10.1002/cncr.29778
12. Malka D, Cervera P, Foulon S, et al. Gemcitabine and oxaliplatin with or without cetuximab in advanced biliary-tract cancer (BINGO): a randomised, open-label, non-comparative phase 2 trial. *Lancet Oncol*. 2014;15(8):819–828. doi:10.1016/S1470-2045(14)70212-8
13. Morizane C, Okusaka T, Mizusawa J, et al. Combination gemcitabine plus S-1 versus gemcitabine plus cisplatin for advanced/recurrent biliary tract cancer: the FUGA-BT (JCOG1113) randomized phase III clinical trial. *Ann Oncol*. 2019;30(12):1950–1958. doi:10.1093/annonc/mdz402
14. Sakai D, Kanai M, Kobayashi S, et al. 615ORandomized phase III study of gemcitabine, cisplatin plus S-1 (GCS) versus gemcitabine, cisplatin (GC) for advanced biliary tract cancer (KHBO1401-MITSUBA). *Ann Oncol*. 2018;29:viii205. doi:10.1093/annonc/mdy282
15. Siebenhüner AR, Seifert H, Bachmann H, et al. Adjuvant treatment of resectable biliary tract cancer with cisplatin plus gemcitabine: a prospective single center phase II study. *BMC Cancer*. 2018;18(1):72. doi:10.1186/s12885-017-3967-0
16. Ebata T, Hirano S, Konishi M, et al. Randomized clinical trial of adjuvant gemcitabine chemotherapy versus observation in resected bile duct cancer. *Br J Surg*. 2018;105(3):192–202. doi:10.1002/bjs.10776
17. Edeline J, Benabdelghani M, Bertaut A, et al. Gemcitabine and oxaliplatin chemotherapy or surveillance in resected biliary tract cancer (PRODIGE 12-ACCORD 18-UNICANCER GI): a randomized phase III study. *J Clin Oncol*. 2019;37(8):658–667. doi:10.1200/JCO.18.00050
18. Primrose JN, Fox RP, Palmer DH, et al. Capecitabine compared with observation in resected biliary tract cancer (BILCAP): a randomized, controlled, multicentre, phase 3 study. *Lancet Oncol*. 2019;20(5):663–673. doi:10.1016/S1470-2045(18)30915-X
19. Kobayashi S, Nagano H, Tomokuni A, et al. A prospective, randomized phase II study of adjuvant gemcitabine versus S-1 after major hepatectomy for biliary tract cancer (KHBO 1208): Kansai Hepato-Biliary Oncology Group. *Ann Surg*. 2019;270(2):230–237. doi:10.1097/SLA.0000000000002865
20. Stein A, Arnold D, Bridgewater J, et al. Adjuvant chemotherapy with gemcitabine and cisplatin compared to observation after curative intent resection of cholangiocarcinoma and muscle invasive gallbladder carcinoma (ACTICCA-1 trial) - a randomized, multidisciplinary, multinational phase III trial. *BMC Cancer*. 2015;15:564. doi:10.1186/s12885-015-1498-0
21. Murakami Y, Uemura K, Sudo T, et al. Prognostic factors of patients with advanced gallbladder carcinoma following aggressive surgical resection. *J Gastrointest Surg*. 2011;15(6):1007–1016. doi:10.1007/s11605-011-1479-9
22. Takada T, Amano H, Yasuda H, et al. Is postoperative adjuvant chemotherapy useful for gallbladder carcinoma? A phase III multicenter prospective randomized controlled trial in patients with resected pancreaticobiliary carcinoma. *Cancer*. 2002;95(8):1685–1695. doi:10.1002/cncr.10831
23. Shroff RT, Kennedy EB, Bachini M, et al. Adjuvant therapy for resected biliary tract cancer: ASCO clinical practice guideline. *J Clin Oncol*. 2019;37(12):1015–1027. doi:10.1200/JCO.18.02178
24. André T, Louvet C, Artru P, et al. A phase II study of gemcitabine and oxaliplatin (gemox) in advanced biliary adenocarcinoma (ABA). Preliminary results. *Eur J Cancer*. 2001;37:S19. doi:10.1016/S0959-8049(01)80552-9
25. André T, Tournigand C, Rosmorduc O, et al. Gemcitabine combined with oxaliplatin (GEMOX) in advanced biliary tract adenocarcinoma: a GERCOR study. *Ann Oncol*. 2004;15(9):1339–1343. doi:10.1093/annonc/mdh351
26. Cho M, Wang-Gillam A, Myerson R, et al. A phase II study of adjuvant gemcitabine plus docetaxel followed by concurrent chemoradiation in resected pancreaticobiliary carcinoma. *HPB*. 2015;17(7):587–593. doi:10.1111/hpb.12413
27. Kainuma O, Miura F, Furukawa D, et al. Feasibility and efficacy of gemcitabine plus cisplatin combination therapy after curative resection for biliary tract cancer. *J Hepato-Bil-Pan Sci*. 2015;22(11):789–794.
28. Toyoda M, Ajiki T, Fujiwara Y, et al. Phase I study of adjuvant chemotherapy with gemcitabine plus cisplatin in patients with biliary tract cancer undergoing curative resection without major hepatectomy (KHBO1004). *Cancer Chemoth Pharma*. 2014;73(6):1295–1301. doi:10.1007/s00280-014-2431-y
29. Eckel F, Brunner T, Jelic S. Biliary cancer: ESMO clinical practice guidelines for diagnosis, treatment and follow-up. *Ann Oncol*. 2010;21(Suppl 5):v65–9. doi:10.1093/annonc/mdq167
30. Li Y, Zhou Y, Hong Y, et al. The efficacy of different chemotherapy regimens for advanced biliary tract cancer: a systematic review and network meta-analysis. *Front Oncol*. 2019;9:441. doi:10.3389/fonc.2019.00441
31. Valle JW, Lamarca A, Goyal L, Barriuso J, Zhu AX. New horizons for precision medicine in biliary tract cancers. *Cancer Discov*. 2017;7(9):943–962. doi:10.1158/2159-8290.CD-17-0245
32. Woo SM, Lee WJ, Han SS, et al. Capecitabine plus cisplatin as first-line chemotherapy for advanced biliary tract cancer: a retrospective single-center study. *Chemotherapy*. 2012;58(3):225–232. doi:10.1159/000339499

Cancer Management and Research

Publish your work in this journal

Cancer Management and Research is an international, peer-reviewed open access journal focusing on cancer research and the optimal use of preventative and integrated treatment interventions to achieve improved outcomes, enhanced survival and quality of life for the cancer patient.

Submit your manuscript here: <https://www.dovepress.com/cancer-management-and-research-journal>

Dovepress

The manuscript management system is completely online and includes a very quick and fair peer-review system, which is all easy to use. Visit <http://www.dovepress.com/testimonials.php> to read real quotes from published authors.