

Comparison among cryoablation, radiofrequency ablation, and partial nephrectomy for renal cell carcinomas sized smaller than 2 cm or sized 2–4 cm

A population-based study

Shuai Yan, MB^a, Wei Yang, MM^a, Cheng-mei Zhu, MB^b, Pei-meng Yan, MB^c, Zhi-chao Wang, MD, PhD^{d,*}

Abstract

This study aimed to compare radiofrequency ablation (RFA), cryoablation (CRA), and partial nephrectomy (PN) for renal cell carcinoma (RCC) sized ≤ 2 cm or 2 to 4 cm.

The Surveillance, Epidemiology, and End Results (SEER) database was used to identify 17,234 patients diagnosed with T1aN0M0 RCC from 2004 to 2015. Overall survival (OS) and cancer-specific survival (CSS) were compared among patients who were treated using PN, CRA, or RFA. The Cox proportional hazards model was used to determine prognostic factors for survival.

In patients with RCCs sized 2 to 4 cm, better OS and CSS were observed with PN than with CRA or RFA. On multivariable analysis, compared to PN, CRA and RFA were independently associated with poor OS and CSS in patients with RCCs sized 2 to 4 cm. In patients with RCCs sized ≤ 2 cm, better OS was observed with PN than with CRA or RFA; however, CSS was similar. On multivariable analysis, compared to PN, RFA was independently associated with poor OS in patients with RCCs sized ≤ 2 cm.

CRA or RFA should not be recommended for patients with RCCs sized 2 to 4 cm; PN is an effective treatment modality in these patients. For patients with RCCs sized ≤ 2 cm, CRA can be an equally effective alternative to PN.

Abbreviations: CRA = cryoablation, CSS = cancer-specific survival, MFS = metastases-free survival, OS = overall survival, PN = partial nephrectomy, RCC = renal cell carcinoma, RFA = radiofrequency ablation, RFS = recurrence-free survival, SEER = Surveillance, Epidemiology, and End Results, SRMs = small renal masses, TA = thermal ablative.

Keywords: cryoablation, partial nephrectomy, radiofrequency ablation, renal cell carcinoma

1. Introduction

The incidence of small renal masses (SRMs) sized ≤ 4 cm has been increasing in the last 10 years; an increase in the use of imaging studies may be at least partly responsible for this increasing incidence.^[1,2] Partial nephrectomy (PN) has long been the gold standard for treating SRMs. Due to the increased incidence of SRMs and evolution of treatment recommendations, thermal ablative (TA) techniques, mainly cryoablation (CRA) and radiofrequency ablation (RFA), are used as alternatives to PN due to low rates of associated complications and renal function

loss.^[3,4] Furthermore, the use of TA techniques has been confirmed as a valid approach for patients with advanced age or for those with a solitary kidney.^[5,6]

With the increase in the use of CRA and RFA for SRMs, the debate on the superiority of CRA or RFA over PN has continued, and the best treatment option among RFA, CRA, and PN for T1aN0M0 renal cell carcinoma (RCC) is still unclear. A study reported that, in patients with tumors sized ≤ 2 cm, the survival rates associated with TA techniques are similar to those associated with PN.^[7] Another study reported that, in patients with tumors sized 2 to 3 or 3 to 4 cm, a significant difference was observed among survival rates associated with different initial local treatment modalities (observation, ablation, PN, and RFA).^[8] Therefore, T1a (≤ 4 cm) may be subclassified into T1a₁ (≤ 2 cm) and T1a₂ (2–4 cm) based on significantly different survival rates associated with different treatment modalities. To the best of our knowledge, no previous study has attempted to determine the optimal treatment procedure for patients with RCCs sized ≤ 2 cm or 2 to 4 cm. Herein, we used the large Surveillance, Epidemiology, and End Results (SEER) database to compare treatment modalities for T1aN0M0 RCC, with a focus on subgroups classified by tumor size (≤ 2 cm and 2 to 4 cm).

2. Materials and methods

2.1. Data source

The SEER database, maintained by the US National Cancer Institute, contains demographic information and data regarding

Editor: Yan Li.

SY and WY contributed equally to this work.

The authors have no conflicts of interest to disclose.

^a Department of Urology, ^b Department of Diagnostic Imaging, ^c Department of Clinical Laboratory, Harbin 242 Hospital, ^d Department of Urology, Harbin Medical University, Harbin, China.

* Correspondence: Zhi-chao Wang, Department of Urology, Xuefu street No. 194, Nangang District, Harbin 150081, People's Republic of China (e-mail: wangzhch1987@163.com).

Copyright © 2019 the Author(s). Published by Wolters Kluwer Health, Inc. This is an open access article distributed under the Creative Commons Attribution License 4.0 (CCBY), which permits unrestricted use, distribution, and reproduction in any medium, provided the original work is properly cited.

Medicine (2019) 98:21(e15610)

Received: 19 December 2018 / Received in final form: 25 March 2019 /

Accepted: 16 April 2019

<http://dx.doi.org/10.1097/MD.00000000000015610>

cancer incidence and survival from 17 population-based cancer registries. In this study, the dataset was released in April 2016, which covered approximately 30% of the US population. The SEER database is an open access database, and data are available for research purposes. We obtained permission to access the data files with the reference number 12948-Nov2015. Since the data extracted from this database were anonymized and de-identified prior to release, our research did not require patient informed consent. The study was granted exempt status by the ethics committee of the Harbin 242 Hospital (Harbin, China).

2.2. Study population and variables

Anonymous patients who were diagnosed with pathologically proven T1aN0M0 RCC using the latest American Joint Committee on Cancer staging system were included. Patients with renal tumors were analyzed based on the International Classification of Diseases for Oncology, Third Edition (code C64.9 and C65.9) criteria, which defines renal tumors as those with the “kidney and renal pelvis” as the primary tumor location. All patients were diagnosed between 2004 and 2015. We excluded patients aged <18 years at the time of diagnosis, those without age-related information, and cases involving autopsy or death certificates. Patient and tumor-related information included data about age, sex, race, marital status, histologic type, tumor size, tumor grade, laterality, and therapies. We limited the sample set to patients who were treated using TA techniques (RFA [SEER code 15] and CRA [SEER codes 13 and 23]) or PN (SEER code 30). Figure 1 summarizes the process of patient selection before statistical matching.

2.3. Statistical analysis

We used the χ^2 test for analyzing baseline characteristics of patients with different marital status. The Kaplan–Meier method and log-rank test were used for analyzing each prognostic factor of CSS and OS, respectively. Moreover, univariate and multivariate Cox regression models were used to estimate the hazard ratio (HR) and precise 95% confidence intervals (CIs). All statistical tests were performed using SPSS 21 software (Chicago,

Table 1

Baseline characteristics of T1aN0M0 renal cell carcinoma patients.

Characteristic	No.(%) of patients		P
	PN (N=15395)	TA (N=1839)	
Age			<.001
≤65	11526 (74.9)	844 (45.9)	
>65	3869 (25.1)	995 (54.1)	
Sex			.022
Male	9219 (59.9)	1152 (62.6)	
Female	6176 (40.1)	687 (37.4)	
Race			<.001
White	12611 (81.9)	1548 (84.2)	
Black	1539 (10.0)	183 (10.0)	
AI	133 (0.9)	17 (0.9)	
API	912 (5.9)	78 (4.2)	
Unknown	200 (1.3)	13 (0.7)	
Laterality			.731
Right	8018 (52.1)	950 (51.7)	
Left	7377 (47.9)	889 (48.3)	
Histologic type			<.001
Clear cell	11470 (74.5)	1319 (71.7)	
Papillary	2748 (17.8)	405 (22.0)	
Chromophone	1177 (7.6)	115 (6.3)	
Tumor size			<.001
≤2 cm	5448 (35.4)	561 (30.5)	
2–4 cm	9942 (64.6)	1277 (69.5)	
Grade			<.001
I/II	10877 (70.7)	1079 (58.7)	
III/IV	2704 (17.6)	83 (4.5)	
Unknown	1804 (11.7)	677 (36.8)	
Marital			<.001
Married	9805 (63.7)	1083 (58.9)	
Unmarried	4787 (31.1)	682 (37.1)	
Unknown	803 (5.2)	74 (4.0)	

AI=American Indian/Alaska Native, API=Asian or Pacific Islander, PN=partial nephrectomy, TA=thermal ablation.

IL). Finally, all tests were 2-sided, and the significance level was set at $P < .05$.

3. Results

3.1. Patient and tumor baseline characteristics

Overall, we identified 17,234 patients with T1aN0M0 RCCs (sized ≤4cm); of these, 15,395 and 1839 patients were treated using PN and TA techniques, respectively. In the TA subgroup, 1381 patients underwent CRA whereas 457 underwent RFA. The median follow-up time was 30 months in both the PN and TA subgroups. The patient and tumor baseline characteristics are listed in Tables 1 and 2, respectively. Notably, surgeons were more likely to perform TA in the RCC sized 2 to 4 cm subgroup than in the RCC sized ≤2 cm subgroup.

3.2. OS and CSS analyses in the RCC T1a sized ≤2cm and sized 2 to 4cm subgroups

Results of the log-rank test showed that in T1aN0M0 RCC patients, better OS (HR, 3.247; 95% CI, 2.632–4.005; $P < 0.001$) and CSS (HR, 3.481; 95% CI, 2.184–5.551; $P < 0.001$) were observed with PN than with TA techniques (Fig. 2A and B). Better survival in terms of OS (PN vs. CRA: HR 2.995, 95% CI

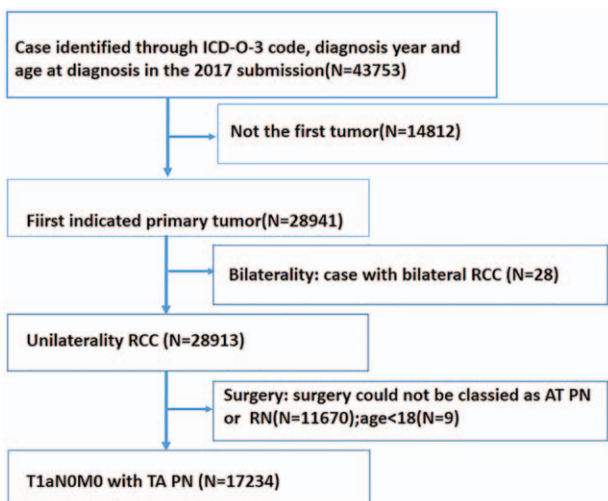


Figure 1. Diagram showing the process of patient selection for statistical matching.

Table 2
Baseline characteristics of patients with renal cell carcinoma ≤ 2 cm and 2–4 cm.

Characteristic	No. (%) of patients by RCC size and surgery type					
	≤ 2 cm			2–4 cm		
	RFA (N=143)	CRA (N=418)	P	RFA (N=314)	CRA (N=963)	P
Age			.621			.948
≤ 65	78 (54.5)	218 (52.2)		135 (43.0)	412 (42.8)	
>65	65 (45.5)	200 (47.8)		1791 (57.0)	551 (57.2)	
Sex			.638			.026
Male	86 (60.1)	242 (57.9)		186 (59.2)	637 (66.1)	
Female	57 (39.9)	176 (42.1)		128 (40.8)	326 (33.9)	
Race			.002			.022
White	109 (76.2)	364 (87.1)		246 (78.3)	829 (86.1)	
Black	18 (12.6)	38 (9.1)		42 (13.4)	84 (8.7)	
AI	2 (1.4)	6 (1.4)		2 (0.6)	7 (0.7)	
API	12 (8.4)	7 (1.7)		21 (6.7)	38 (3.9)	
Unknown	2 (1.4)	3 (0.7)		3 (1.0)	5 (0.5)	
Laterality			.392			.842
Right	74 (51.7)	199 (47.6)		168 (53.5)	509 (52.9)	
Left	69 (48.3)	219 (52.4)		146 (46.5)	454 (47.1)	
Histologic type			.333			.041
Clear cell	86 (60.1)	279 (66.7)		230 (73.2)	724 (75.2)	
Papillary	45 (31.5)	113 (27.0)		72 (22.9)	174 (18.1)	
Chromophone	12 (8.4)	26 (6.2)		12 (3.8)	65 (6.7)	
Grade			.964			.133
I/II	79 (55.2)	226 (54.1)		175 (55.7)	598 (62.1)	
III/IV	7 (4.9)	20 (4.8)		15 (4.8)	41 (4.3)	
Unknown	57 (39.9)	172 (41.1)		124 (39.5)	324 (33.6)	
Marital			.956			.193
Married	85 (59.4)	251 (60.0)		182 (58.0)	564 (58.6)	
Unmarried	51 (4.9)	149 (35.6)		125 (39.8)	357 (37.1)	
Unknown	7 (4.9)	18 (4.3)		7 (2.2)	42 (4.4)	

AI=American Indian/Alaska Native, API=Asian or Pacific Islander, CRA=cryoablation, RFA=radiofrequency ablation.

2.363–3.794, $P < 0.001$; PN vs. RFA: HR 4.085, 95% CI 2.683–6.220, $P < 0.001$) and CSS (PN vs. CRA: HR 3.562, 95% CI 1.399–6.220, $P < 0.001$; PN vs. RFA: HR 3.457, 95% CI 2.043–5.850, $P < 0.001$) was observed in the PN subgroup than in the CRA or RFA subgroups (Fig. 2C and D). For RCCs sized ≤ 2 cm, a difference was observed in OS (PN vs. CRA: HR 1.958, 95% CI 1.204–3.184, $P < 0.001$; PN vs. RFA: HR 2.841, 95% CI 1.211–6.662, $P < 0.001$) but not in CSS (Fig. 3A and B). According to the RCC subclassification, in patients with RCCs sized 2–4 cm, survival outcomes differed significantly according to treatment modality with respect to OS (PN vs. CRA: HR 3.284, 95% CI 2.513–4.292, $P < 0.001$; PN vs. RFA: HR 4.497, 95% CI 2.782–7.269, $P < 0.001$) and CSS (PN vs. CRA: HR 3.536, 95% CI 2.006–6.234, $P < 0.001$; PN vs. RFA: HR 4.339, 95% CI 1.573–11.971, $P < 0.001$) (Fig. 3C and D).

The Cox proportional hazards regression model was used to control for potential confounding factors. Compared to TA techniques, PN was significantly associated with better OS (HR, 2.327; 95% CI, 1.953–2.772; $P < 0.001$) and CSS (HR, 2.174; 95% CI, 1.502–3.147; $P < 0.001$) for RCCs sized 2–4 cm but not for RCCs sized ≤ 2 cm (OS: HR 1.489, 95% CI 1.064–2.084, $P = 0.020$; CSS: HR 1.248, 95% CI 0.504–3.092, $P = 0.632$; Table 3).

Furthermore, our results showed the superiority of PN over CRA and RFA for RCCs sized ≤ 2 cm and RCCs sized 2–4 cm. In patients with RCCs sized 2–4 cm, worse OS (PN vs. RFA: HR 2.988, 95% CI 2.263–3.946, $P < 0.001$; PN vs. CRA: HR 2.144, 95% CI 1.766–2.603, $P < 0.001$) and CSS (PN vs. RFA: HR

2.626, 95% CI 1.441–4.786, $P = 0.002$; PN vs. CRA: HR 2.051, 95% CI 1.368–3.075, $P = 0.001$) were observed with RFA and CRA than with PN (Table 4). In patients with RCCs sized ≤ 2 cm, worse OS was observed with RFA than with PN (HR, 2.034; 95% CI, 1.172–3.531; $P = 0.012$); however, this difference was not observed between PN and CRA (HR, 1.326; 95% CI, 0.897–1.960; $P = 0.157$). In patients with RCCs sized ≤ 2 cm, no significant differences were observed in CSS between RFA or CRA and PN (PN vs. RFA: HR 0.000, 95% CI 0.000–5.163, $P = 0.986$; PN vs. CRA: HR 1.699, 95% CI 0.682–4.234, $P = 0.255$; Table 4).

4. Discussion

Several novel approaches have been applied in the treatment of SRMs sized ≤ 4 cm; however, the optimal treatment of SRMs remains controversial. Recently, several reports have suggested comparable oncologic outcomes between TA techniques and PN in RCC patients.^[9–11] However, these studies have not presented substantial or compelling evidence in favor of TA techniques; therefore, PN is still the standard treatment for SRMs and is recommended by the European Association of Urology as well as the American Urological Association.^[12,13] Although these recent technologies present obvious advantages for patients, the debate still continues about whether CRA or RFA could be an oncologic treatment equivalent to PN for SRMs. For this study, we classified T1aN0M0 RCC into subgroups based on tumor size: ≤ 2 cm and

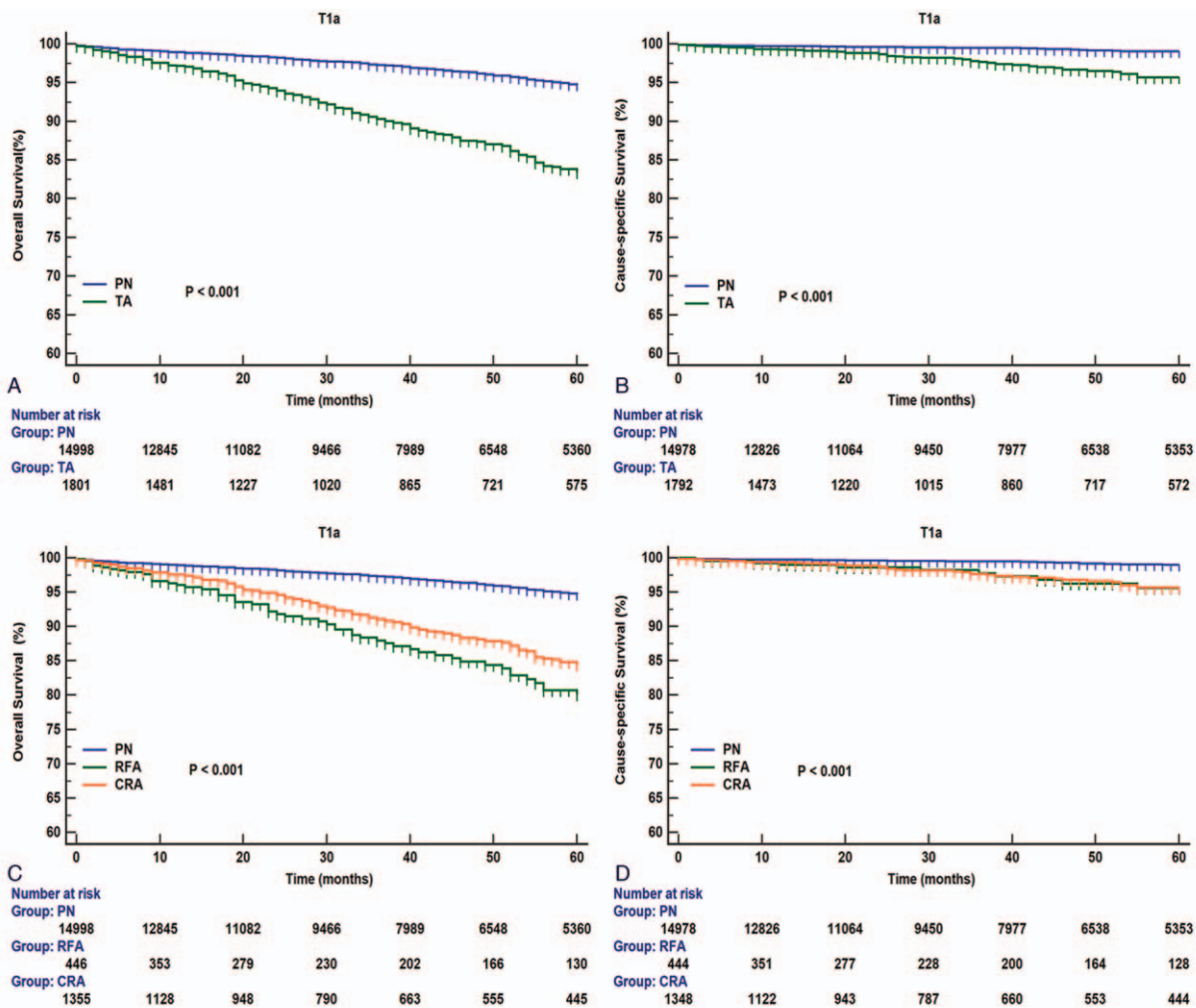


Figure 2. Overall and renal cancer-specific survivals in patients with T1aN0M0 renal cell carcinoma (RCC) undergoing PN or TA treatment (A and B); CRA, RFA, or PN (C and D). CRA=cryoablation, PN=partial nephrectomy, RCC=renal cell carcinoma, RFA=radiofrequency ablation, TA=thermal ablation.

2 to 4 cm. We aimed to study whether any difference exists among RFA, CRA, and PN as treatment modalities for both subgroups. In our study, we demonstrated that PN was superior to CRA or RFA in patients with RCCs sized 2 to 4 cm. However, in the RCC size ≤ 2 cm subgroup, no obvious superiority was found between PN and CRA. Using this subclassification, we aimed to provide a new basis for stratifying patients and for targeting SRMs that are most likely to be cured in an optimal and durable manner.

Two SEER-based studies and one meta-analysis evaluated the difference in survival rates between PN and TA techniques for SRMs.^[9,14,15] All studies showed similar results: the PN group showed significantly better OS, but no significant difference in CSS was observed between the treatment groups. In the light of these findings, we aimed to provide more comprehensive information for identification of the optimal treatment strategy. Therefore, we performed this population study to assess how treatment with TA techniques and PN correlated with the reported findings. Initially, our study showed that, compared to TA techniques, PN had a significant survival (OS and CSS) benefit in patients with T1aN0M0 RCCs. Subsequently, TA was divided into CRA and RFA, and patients were further divided

into subgroups according to tumor size, ≤ 2 cm and 2 to 4 cm. We found that significantly worse OS and CSS was observed with CRA or RFA compared with PN in patients with RCCs sized 2–4 cm. This relationship was not observed in those with RCCs sized ≤ 2 cm. Therefore, we hypothesized that variables such as tumor size and treatment modality significantly contribute to survival. Based on this difference in survival outcomes, T1a (≤ 4 cm) tumors should be classified into 2 subgroups according to a 2-cm cutoff. Moreover, a study by Abdel-Rahman et al^[8] supported the idea that T1a lesions should be divided into T1a₁ and T1a₂ according to tumor size (using 2 cm as a cutoff value). This study demonstrated that PN, instead of CRA or RFA, is the preferred choice in patients with RCCs sized 2 to 4 cm for providing optimal long-term survival. This result is consistent with National Comprehensive Cancer Network treatment guidelines, which recommend PN for lesions sized > 3 cm; these guidelines recommend TA techniques for select patients with small lesions, for older patients, and for patients with competing health risks.^[16]

In clinical practice, some patients are not eligible for PN owing to co-morbidities or older age.^[3] In such cases, TA is a feasible

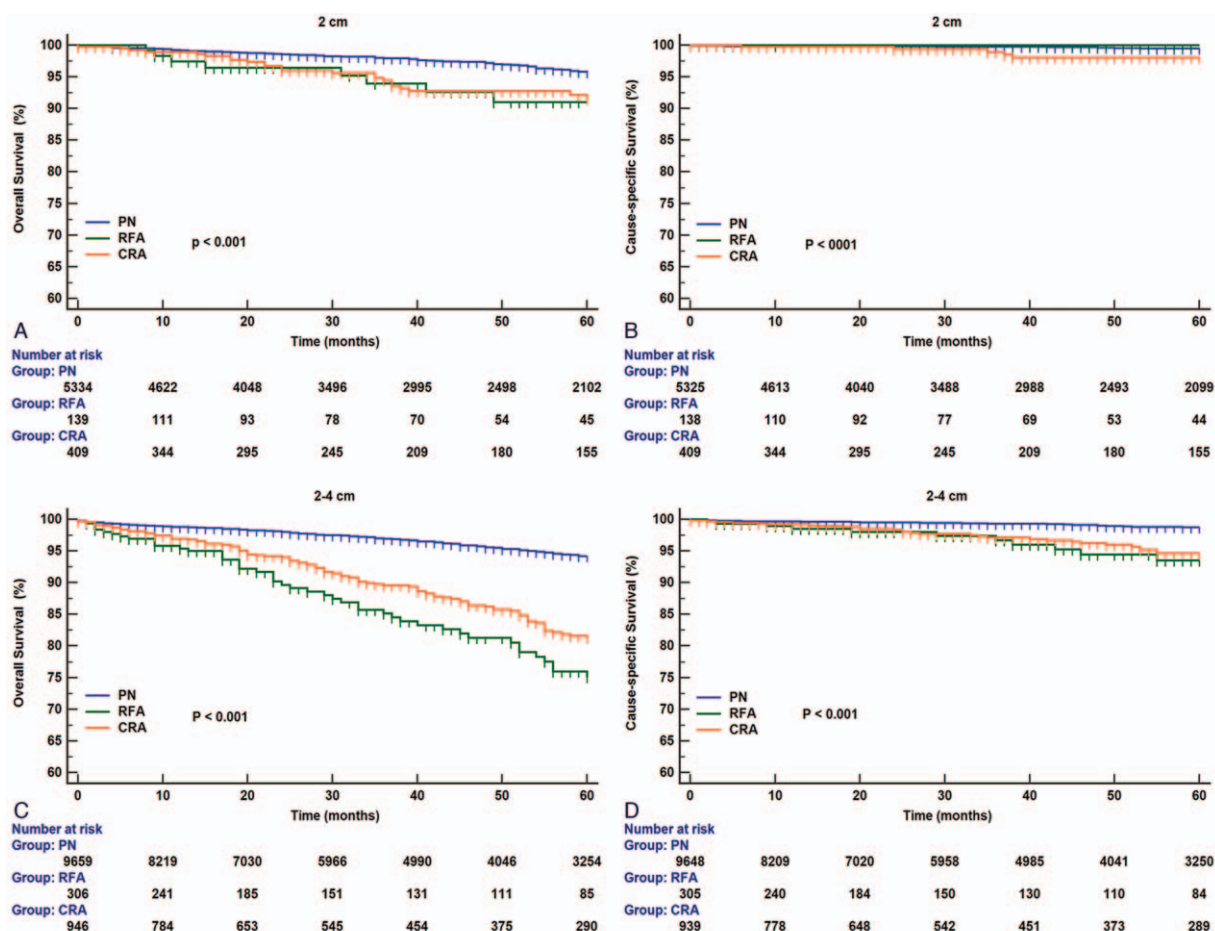


Figure 3. Overall and renal cancer-specific survivals in patients with renal cell carcinoma (RCC) sized ≤ 2 cm (A and B) or RCC sized 2–4 cm (C and D) undergoing CRA, RFA, or PN. CRA=cryoablation, PN=partial nephrectomy, RCC=renal cell carcinoma, RFA=radiofrequency ablation, TA=thermal ablation.

alternative as it has the advantages of a short hospitalization period, reduced morbidity, and tolerability in patients with significant co-morbidities.^[17] CRA and RFA are both standard TA techniques; however, it is still unclear which technique has the maximum oncologic efficiency. In 2 retrospective studies, a comparison between CRA and PN revealed similar OS, CSS, recurrence-free survival (RFS), and metastases-free survival (MFS).^[18,19] Conversely, 2 other retrospective studies reported better oncologic outcomes with PN than with CRA.^[20,21] A recent study at the Mayo Clinic revealed similar RFS rates between PN and CRA but reported better MFS with PN and CRA than with RFA.^[6] More recently, a retrospective matching study revealed that TA techniques and PN resulted in similar OS in patients with T1a tumors sized ≤ 2 cm.^[7] In our study, which is based on a large cohort, we could obtain a more refined result. In patients with RCCs sized ≤ 2 cm, multivariable analyses showed that, except for a difference in OS between the PN and RFA groups, no difference was observed in OS and CSS between the PN and TA groups. Despite this disparity between earlier and more recent studies, our results together with existing data suggest that TA techniques, specifically CRA, could be a feasible alternative to PN, especially for SRMs ≤ 2 cm.

However, our study has certain limitations. First, as is common in retrospective studies, many inherent biases could

not be avoided. Selection bias due to the absence of some important patient characteristics, such as functional status, could not be disregarded. Second, we could only obtain information regarding initial treatment from the SEER database; no information was available regarding subsequent treatment after relapse. This may have affected our findings. Third, the SEER database also lacks other information such as comorbidities, number of tumors, proximity of the tumor to other structures, and type of surgery (open, laparoscopic, or robotic-assisted). These factors are associated with varying degrees of morbidity and therefore, affect patient survival. Despite these limitations, our results have provided some indications for elucidating the optimal management strategy in patients with SRMs. Further investigation, ideally in the form of a randomized controlled trial, is needed.

In conclusion, significantly better survival was observed with PN compared with TA (CRA or RFA) techniques in patients with RCCs sized 2 to 4 cm. CRA or RFA should not be recommended for patients with RCCs sized 2 to 4 cm; PN is a better alternative in such patients. However, for patients with RCCs sized ≤ 2 cm, CRA can be an equally effective alternative to PN. Further prospective randomized studies are needed to evaluate this treatment paradigm for T1aN0M0 RCC.

Table 3
Cox proportional hazards regression model for overall survival and renal cancer-specific survival in patients with renal cell carcinoma ≤ 2 cm and 2–4 cm who underwent thermal ablation and partial nephrectomy.

Characteristic	No.(%) of patients by RCC Size and surgery type							
	≤2 cm				2–4 cm			
	OS		CCS		OS		CCS	
	HR (95%CI)	P	HR (95%CI)	P	HR (95%CI)	P	HR (95%CI)	P
Age		<.001		<.001		<.001		<.001
≤65	1		1		1		1	
>65	3.209 (2.517–4.091)		4.239 (2.252–7.977)		3.354 (2.875–3.912)		5.208 (3.673–7.386)	
Sex		.010		.865		<.001		.003
Male	1		1		1		1	
Female	0.719 (0.559–0.924)		1.058 (0.555–2.015)		0.738 (0.630–0.864)		0.595 (0.420–0.842)	
Race		.521		.964		.185		.718
White	1		1		1		1	
Black	1.132 (0.771–1.663)	.526	1.052 (0.369–2.999)	.925	1.254 (0.993–1.582)	.057	0.622 (0.324–1.192)	.152
AI	1.486 (0.473–4.668)	.498	0.000 (0.000–0)	.987	1.278 (0.571–2.860)	.551	0.942 (0.131–6.749)	.953
API	0.583 (0.287–1.182)	.135	0.462 (0.063–3.398)	.448	0.778 (0.545–1.112)	.169	1.047 (0.550–1.995)	.888
Unknown	0.000 (0.000–1039E+78)	.919	0.000 (0.000–0)	.986	0.000 (0.000–1.474E+70)	.901	0.000 (0.000–8.096E+149)	.952
Laterality		.896		.532		.054		.450
Right	1		1		1		1	
Left	0.984 (0.777–1.247)		0.821 (0.441–1.526)		1.152 (0.997–1.331)		1.125 (0.829–1.528)	
Histologic type		.005		.159		.001		.050
Clear cell	1		1		1		1	
Papillary	1.242 (0.939–1.645)	.129	1.909 (0.960–3.795)	.065	0.889 (0.740–1.068)	.208	1.002 (0.690–1.454)	.992
Chromophone	0.377 (0.185–0.770)	.007	0.937 (0.952–3.248)	.937	0.526 (0.373–0.740)	<.001	0.327 (0.133–0.807)	.015
Grade		.428		.478		.011		.012
I/II	1		1		1		1	
III/IV	0.796 (0.528–1.200)	.275	1.647 (0.705–3.844)	.249	1.287 (1.059–1.564)	.011	1.737 (1.177–2.563)	.005
Unknown	1.101 (0.781–1.553)	.582	1.317 (0.552–3.141)	.535	1.227 (1.010–1.490)	.040	1.401 (0.931–2.110)	.106
Marital		<.001		.940		<.001		.005
Married	1		1		1		1	
Unmarried	1.803 (1.407–2.312)	<.001	0.884 (0.443–1.765)	.728	1.621 (1.390–1.890)	<.001	1.717 (1.237–2.384)	.001
Unknown	1.369 (0.789–2.373)	.264	0.000 (0.000–7.866E+239)	.967	1.308 (0.920–1.858)	.134	1.365 (0.661–2.821)	.400
Therapy		.020		.632		<.001		<.001
PN	1		1		1		1	
TA	1.489 (1.064–2.084)		1.248 (0.504–3.092)		2.327 (1.953–2.772)		2.174 (1.502–3.147)	

AI = American Indian/Alaska Native, API = Asian or Pacific Islander, CSS = cancer-specific survival, OS = overall survival, PN = partial nephrectomy, TA = thermal ablation.

Table 4
Cox proportional hazards regression model for overall survival and renal cancer-specific survival in patients with RCC ≤ 2 cm and 2–4 cm who underwent partial nephrectomy, radiofrequency ablation, and cryoablation.

Characteristic	No.(%) of patients by RCC Size and surgery type							
	≤2 cm				2–4 cm			
	OS		CCS		OS		CCS	
	HR (95%CI)	P	HR (95%CI)	P	HR (95%CI)	P	HR (95%CI)	P
Age		<.001		<.001		<.001		<.001
≤65	1		1		1		1	
>65	3.199 (2.509–4.078)		4.301 (2.289–8.082)		3.357 (2.878–3.916)		5.213 (3.676–7.393)	
Sex		.011		.896		<.001		.003
Male	1		1		1		1	
Female	0.722 (0.562–0.929)		1.044 (0.547–1.991)		0.732 (0.626–0.857)		0.591 (0.418–0.837)	
Race		.486		.980		.181		.712
White	1		1		1		1	
Black	1.120 (0.762–1.646)	.564	1.085 (0.381–3.091)	.879	1.247 (0.988–1.573)	.063	0.619 (0.323–1.187)	.149
AI	1.486 (0.473–4.669)	.498	0.000 (0.000–0)	.992	1.284 (0.574–2.873)	.543	0.940 (0.131–6.737)	.951
API	0.563 (0.277–1.144)	.112	0.528 (0.072–3.889)	.531	0.769 (0.538–1.099)	.149	1.041 (0.546–1.982)	.904
Unknown	0.00 (0.000–3.555E+76)	.917	0.000 (0.000–0)	.990	0.000 (0.000–4.237E+43)	.859	0.000 (0.000–3.012E+154)	.953
Laterality		.941		.473		.049		.957
Right	1		1		1		1	
Left	0.991 (0.782–1.256)		0.797 (0.429–1.482)		1.156 (1.001–1.335)		0.995 (0.833–1.189)	
Histologic type		.005		.160		.001		.051
Clear cell	1		1		1		1	
Papillary	1.237 (0.934–1.638)	.138	1.921 (0.967–3.817)	.062	0.886 (0.738–1.064)	.195	1.000 (0.689–1.451)	.999
Chromophone	0.371 (0.182–0.758)	.007	1.005 (0.295–3.424)	.994	0.528 (0.375–0.744)	<.001	0.328 (0.133–0.809)	.015
Grade		.421		.509		.011		.012
I/II	1		1		1		1	
III/IV	0.799 (0.530–1.205)	.285	1.622 (0.695–3.787)	.263	1.293 (1.063–1.571)	.010	1.743 (1.181–2.573)	.005
Unknown	1.112 (0.789–1.568)	.544	1.276 (0.533–3.056)	.584	1.220 (1.004–1.482)	.046	1.398 (0.929–2.105)	.108
Marital		<.001		.915		<.001		.005
Married	1		1		1		1	
Unmarried	1.814 (1.414–2.326)	<.001	0.862 (0.431–1.722)	.673	1.619 (1.389–1.888)	<.001	1.718 (1.237–2.384)	.001
Unknown	1.380 (0.796–2.393)	.252	0.000 (0.000–1.565)	.978	1.335 (0.939–1.898)	.107	1.388 (0.671–2.870)	.377
Therapy		.022		.523		<.001		<.001
PN	1		1		1		1	
RFA	2.034 (1.172–3.531)	.012	0.000 (0.000–5.163)	.986	2.988 (2.263–3.946)	<.001	2.626 (1.441–4.786)	.002
CRA	1.326 (0.897–1.960)	.157	1.699 (0.682–4.232)	.255	2.144 (1.766–2.603)	<.001	2.051 (1.368–3.075)	.001

AI = American Indian/Alaska Native, API = Asian or Pacific Islander, CRA = cryoablation, CSS = cancer-specific survival, OS = overall survival, PN = partial nephrectomy, RFA = radiofrequency ablation.

Author contributions

Shuai Yan: Project development, data collection and management, and data analysis; Wei Yang: Manuscript writing and editing; Cheng-mei Zhu and Pei-meng Yan: Project development and manuscript writing and editing; and Zhi-chao Wang: Data analysis and manuscript writing.

Formal analysis: Wei Yang.

Methodology: Cheng-mei Zhu.

Project administration: Zhichao Wang.

Software: Cheng-mei Zhu.

Supervision: Zhichao Wang.

Writing – original draft: Shuai Yan, Wei Yang.

Writing – review & editing: Pei-meng Yan.

References

- [1] Hollingsworth JM, Miller DC, Daignault S, et al. Rising incidence of small renal masses: a need to reassess treatment effect. *J Natl Cancer Inst* 2006;98:1331–4.
- [2] Kane CJ, M.K. , Ritchey J, et al. Renal cell cancer stage migration: analysis of the National Cancer Data Base. *Cancer* 2008;113:78–83.
- [3] Gkentzis A, Oades G. Thermal ablative therapies for treatment of localised renal cell carcinoma: a systematic review of the literature. *Scott Med J* 2016;61:185–91.
- [4] D’Andrea D, Shariat SF, Klatt T. Update on ablative therapies of renal tumors. *Curr Opin Urol* 2016;26:410–6.
- [5] Cholley I, Correas JM, Masson-Lecomte A, et al. Comparison of operative and oncologic results between partial nephrectomy and radiofrequency ablation for treatment of renal tumors in patients older than 75. *Prog Urol* 2018;28:55–61.
- [6] Bhindi B, Mason RJ, Haddad MM, et al. Outcomes after cryoablation versus partial nephrectomy for sporadic renal tumors in a solitary kidney: a propensity score analysis. *Eur Urol* 2018;73:254–9.
- [7] Moskowitz D, Chang J, Ziogas A, et al. Treatment for T1a renal cancer substratified by size: “less is more”. *J Urol* 2016;196:1000–7.
- [8] Abdel-Rahman O. Impact of tumor size on the outcome of patients with small renal cell carcinoma. *Exp Rev Anticancer Ther* 2017;17:769–73.
- [9] Talenfeld AD, Gennarelli RL, Elkin EB, et al. Percutaneous ablation versus partial and radical nephrectomy for T1a renal cancer: a population-based analysis. *Ann Intern Med* 2018;169:69–78.
- [10] Rivero JR, De La Cerda J, Wang H, et al. Partial nephrectomy versus thermal ablation for clinical stage T1 renal masses: systematic review and meta-analysis of more than 3,900 patients. *J Vasc Intervent Radiol* 2018;29:18–29.
- [11] Uhlig J, Kokabi N, Xing M, et al. Ablation versus resection for stage 1A renal cell carcinoma: National Variation in Clinical Management and Selected Outcomes. *Radiology* 2018;288:889–97.
- [12] Ljungberg B, Bensalah K, Canfield S, et al. EAU Guidelines on renal cell carcinoma: 2014 update. *Eur Urol* 2015;67:913–24.
- [13] Campbell S, Uzzo RG, Allaf ME, et al. Renal mass and localized renal cancer: AUA guideline. *J Urol* 2017;198:520–9.
- [14] Uhlig J, Strauss A, Rücker G, et al. Partial nephrectomy versus ablative techniques for small renal masses: a systematic review and network meta-analysis. *Eur Radiol* 2018;29:1293–307. Epub ahead of print.
- [15] Zhou M, Mills A, Ramaswamy R, et al. SEER study of ablation versus partial nephrectomy in cT1A renal cell carcinoma. *Future Oncol* 2018;14:1711–9. Epub ahead of print.
- [16] Motzer RJ, Jonasch E, Agarwal N, et al. Kidney Cancer, Version 2.2017, NCCN Clinical Practice Guidelines in Oncology. *J Natl Compr Canc Netw* 2017;15:804–34.
- [17] Aron M, Gill IS. Minimally invasive nephron-sparing surgery (MINSS) for renal tumours. *Eur Urol* 2007;51:348–57.
- [18] Ko YH, P.H.S. , Moon DG, et al. A matched-cohort comparison of laparoscopic renal cryoablation using ultra-thin cryoprobes with open partial nephrectomy for the treatment of small renal cell carcinoma. *Cancer Res Treat* 2008;40:184–9.
- [19] O’Malley RL, Berger AD, Kanofsky JA, et al. A matched-cohort comparison of laparoscopic cryoablation and laparoscopic partial nephrectomy for treating renal masses. *BJU Int* 2007;99:395–8.
- [20] Haber GP, Lee MC, Crouzet S, et al. Tumour in solitary kidney: laparoscopic partial nephrectomy vs laparoscopic cryoablation. *BJU Int* 2012;109:118–24.
- [21] Desai MM, Aron M, Gill IS. Laparoscopic partial nephrectomy versus laparoscopic cryoablation for the small renal tumor. *Urology* 2005;66:23–8.