


SCIENTIFIC REPORTS



OPEN

Cardiovascular consequences of myocardial bridging: A meta-analysis and meta-regression

Sorin Hostiuc¹, Mugurel Constantin Rusu^{2,3}, Mihaela Hostiuc⁴, Ruxandra Irina Negoii⁵ & Ionuț Negoii⁶ 

Received: 28 July 2017

Accepted: 2 October 2017

Published online: 07 November 2017

Myocardial bridging, a congenital abnormality in which a coronary artery tunnels through the myocardial fibres was usually considered a benign condition. Many studies suggested a potential hemodynamic significance of myocardial bridging and some, usually case reports, implied a possible correlation between it and various cardiovascular pathologies like acute myocardial infarction, ventricular rupture, life-threatening arrhythmias, hypertrophic cardiomyopathy, apical ballooning syndrome or sudden death. The main objective of this article is to evaluate whether myocardial bridging may be associated with significant cardiac effects or if it is strictly a benign anatomical variation. To this purpose, we performed a meta-analysis (performed using the inverse variance heterogeneity model) and meta-regression, on scientific articles selected from three main databases (Scopus, Web of Science, Pubmed). The study included 21 articles. MB was associated with major adverse cardiac events - OR = 1.52 (1.01–2.30), and myocardial ischemia OR = 3.00 (1.02–8.82) but not with acute myocardial infarction, cardiovascular death, ischemia identified using imaging techniques, or positive exercise stress testing. Overall, myocardial bridging may have significant cardiovascular consequences (MACE, myocardial ischemia). More studies are needed to reveal/refute a clear association with MI, sudden death or other cardiovascular pathologies.

Myocardial bridging (MB) is a congenital abnormality characterised by the presence of an intramural course of a coronary artery^{1–4}, causing a distinguishing systolic and diastolic flow disturbance⁵. It was usually considered a benign condition, mostly because it constricts the bridged coronary during systole, while most of the blood flow occurs during diastole. Many studies suggested a potential hemodynamic significance of MB^{6–16} and some, usually case reports, implied a possible correlation between MB and various cardiovascular pathologies including acute myocardial infarction^{17,18}, ventricular rupture¹⁹, life-threatening arrhythmias^{20,21}, HCM^{22–25}, apical ballooning syndrome^{26,27} or sudden death²⁸. In forensic autopsies, it is sometimes considered a cause of sudden death, and is often reported as such in scientific articles, especially in association with other congenital cardiac or coronary anomalies^{6,22,29–36}. Hong *et al.* published a meta-analysis in which they showed a statistically significant correlation between MB and myocardial infarction (MI), and failed to prove a positive relationship between MB and major adverse cardiac events (MACE)³⁷. However, they did not check for potential confounding factors, nor it did perform a detailed analysis of the heterogeneity. Also, since that meta-analysis was published, many more articles about MB were issued in the scientific literature.

The main objective of this article is to evaluate whether MB may cause significant cardiac effects or if it is strictly a benign anatomical variation.

¹Department of Legal Medicine and Bioethics, Department 2 Morphological Sciences, Faculty of Medicine, “Carol Davila” University of Medicine and Pharmacy, Bucharest, Romania. ²Division of Anatomy, Faculty of Dental Medicine, “Carol Davila” University of Medicine and Pharmacy, Bucharest, Romania. ³MEDCENTER, Centre of Excellence in Laboratory Medicine and Pathology, Bucharest, Romania. ⁴Department of Internal Medicine and Gastroenterology, Faculty of Medicine, “Carol Davila” University of Medicine and Pharmacy, Bucharest, Romania. ⁵Department of Anatomy, Faculty of Medicine, “Carol Davila” University of Medicine and Pharmacy, Bucharest, Romania. ⁶Department of Surgery, Faculty of Medicine, “Carol Davila” University of Medicine and Pharmacy, Bucharest, Romania. Correspondence and requests for materials should be addressed to S.H. (email: soraer@gmail.com)

Materials and Methods

The study was performed by following the PRISMA guidelines for reporting systematic reviews and meta-analyses³⁸.

Selection criteria. Inclusion criteria: (1) studies in which were compared a group of subjects with myocardial bridging and a group without this condition, regarding one of the following endpoints: MACE, cardiovascular (including sudden) death (CVD), MI, myocardial ischemia; (2) raw data regarding the number of cases from each subgroup (myocardial bridging +/- outcome, no myocardial bridging +/- outcome). We used as exclusion criteria: (1) the absence of relevant information to reconstruct the data needed for analysis; (2) studies not published in English; (3) studies with less than 30 subjects in the cases group; (4) case series/case reports; (5) articles not found in online databases. MACE was defined as composite events of cardiovascular death, myocardial infarction, target vessel revascularization, and stent thrombosis³⁹. MI was defined serum cardiac biomarker increases with symptoms of ischemia, ECG changes suggestive for new ischemia/myocardial infarction, or the identification of myocardial infarction at the autopsy. If, in a prospective study were given data about previous MIs at baseline (such as pathological Q waves), they were also included in the analysis. Cardiovascular death was defined as any death with no known non-cardiac underlying causes; we also included in this endpoint sudden deaths and cardiac arrests. Myocardial ischemia was assessed through specific signs as assessed on ECG (ST changes), a positive stress exercise test, or positive Thallium scintigraphy for ischemia.

Search method. We analyzed the results obtained from three databases: Web of Science, Scopus, and Pubmed, by using the following keywords: “myocardial bridging”, “mural coronary”. We preferred not to use additional, restrictive criteria (e.g. article type) as other varieties (letters, case presentations, reviews) could add relevant data to the meta-analysis (discussions, finding other pertinent studies). The reference list of each appropriate item was inspected for other, potentially relevant studies, to be included in the meta-analysis. The references and abstracts (if available) were imported in Thompson Endnote software, and useful articles were downloaded for further inspection.

Data collection and analysis. For each study, two reviewers extracted the data separately and included it in Excel Datasheets. We summarised the following information: study, name, the total number of cases in each group, country, general inclusion and exclusion criteria, endpoints, covariates: depth, length, systemic hypertension, angina pectoris, diabetes mellitus, hyperlipidemia, smoking, age, gender.

Risk of bias. The risk of bias was assessed separately, for each case, by two reviewers. We analysed selection bias (inclusion and exclusion criteria, whether the study was dedicated to MB or had a more general nature), multiple publication biases, measurement bias (the method used), statistical reporting bias. Based on these elements, we separated the studies in three subgroups: high risk of bias, moderate risk of bias and low risk of bias.

Quality assessment. Quality assessment was performed with the Quality in Prognostic Studies Tool from which we removed study attrition (which was considered not relevant for a prevalence study). For each remaining subscales (study participation, prognostic factor measurement, outcome measurement, study confounding, statistical analysis and reporting), we graded each study as high quality (2 points), moderate quality (1 point) or low quality (0 points) and we summed up the results (Table 1).

Statistical analysis. We determined the effect size using inverse variance heterogeneity model computed in Microsoft Excel 2016 with the MetaXL add-on version 5.3 and used Comprehensive Meta-Analysis v3 for performing meta-regression. For each group and subgroup, we performed a forest plot. For the analysis of publication bias, we used the funnel plot and the Luis Furuya-Kanamori (LFK) index. We used a continuity correction of 0.5, and 95% confidence intervals. Forest plots were done using Microsoft Excel 2016 with the MetaXL add-on 5.3, with the effect size transformed logarithmically for better viewing.

Results

Search synthesis. During the initial database research, we obtained 7358 articles from which, after deleting 4839 duplicates, we were left with 2519, that were included in the initial analysis. From them, we screened the abstracts and removed all articles not containing clinical studies that included a group of subjects with myocardial bridging and a group without this condition, regarding the above-mentioned endpoints. 32 articles selected and further downloaded. By analysing their references, we found another 5 potentially relevant items, which were also downloaded. The next step included the analysis of the full text manuscripts, after which we selected 21 to be included in the meta-analysis, which fully respected the inclusion criteria. Details about search synthesis are presented in Fig. 1⁴⁰. We detailed the papers comprised in the analysis in Table 1.

Major Adverse Coronary Events (MACE). Sixteen studies contained data about a potential correlation between MB and MACE. The presence of MB led to a significantly increased risk for MACE - OR = 1.53(1.01–2.30), $p < 0.001$ (Fig. 2). The publication bias was minimal, with an LFK index of 0.33. The heterogeneity of the included studies was moderate ($I^2 = 61\%$). Meta-regression analysis found a positive correlation between MACE risk and the increase in age differential between subjects with MB versus subjects without MB; gender, systemic hypertension, hyperlipidemia, previous angina, diabetes mellitus or smoking failed to generate statistically significant differences (see Table 2). By performing a subgroup analysis, based on whether the studies considered significant coronary artery disease as an either inclusion or exclusion criteria, we found that, if the presence of CAD was used as an inclusion criteria, OR was 1.60(0.79–3.23), and if it was used as an exclusion criteria – 1.54 (0.79–3). By performing a subgroup analysis, based on whether the studies were done on patients with HCM, we

Study, Year	Method	Country	Main Inclusion Criteria	Main Exclusion Criteria (Cardiovascular)	Type	Endpoint, Follow-up	Subjects	Quality	Bias
<i>Brolin, 2015</i> ⁹⁰	CT, 64	Sweden	Fulfilled the definition of MI Underwent CAG showing no of minimal signs of atherosclerosis	Myocarditis, a clinical diagnosis of PTE, non-sinus rhythm on admission, pacemaker use, patient history of heart disease, obstructive lung disease, renal disease	Case-Control	MI (acute myocardial infarction and non-obstructed coronary artery, screened for the Stockholm Myocardial Infarction with Normal Coronaries study)	54 with MB (28 with MI) 61 without MB (29 MI)	8	Moderate
<i>Canyigit, 2009</i> ⁹¹	CT, 16	Turkey	Suspected CAD, control of coronary stents or bypass grafts	—	Retrospective	Positive effort test (timeframe unspecified)	108 with MB (8 with positive effort test), 162 without MB (13 with positive effort test)	8	Low
<i>Ishii, 1986</i> ⁵⁸	Autopsy	Japan	Consecutive autopsy cases	—	Retrospective	MI (location, age not specified)	173 cases with MB (16 MI), 257 cases without MB (20 MI)	8	Low
<i>Kim Sung Soo, 2010</i> ⁹²	CAG	Korea	Chest pain without significant CAD (defined as <50% stenosis) Discharged with medical therapy and for chest pain	Significant CAD, risk factor causing chest pain (ie, valvular heart disease, cardiomyopathy, congenital heart disease, myocarditis, significant arrhythmia, pulmonary disease, gastrointestinal disease)	Retrospective	MI (diagnosed clinically, no timeframe specified) ECG signs suggestive of myocardial ischemia/infarction, no timeframe specified (ST segment change, pathologic Q wave)	308 with MB (28 with clinically detected MI, 17 with ST segment change, 14 with pathologic Q wave) 376 without MB (15 with clinically detected MI, 10 with ST segment change, 14 with pathologic Q wave)	8	Moderate
<i>Kim, 2007</i> ⁹³	CAG	Korea		Patients with a 50% stenotic lesion, previous acute coronary syndrome, underlying HCM,	Case-Control	ECG signs suggestive for myocardial ischemia (ST changes) after CAG with Ach provocation test,	81 with MB (34 with ECG changes) 195 without MB (13 with ECG changes)	8	Moderate
<i>Kitazume, 1983</i> ⁹⁴	CAG	US	Patients with resting or stimulated intraventricular peak systolic gradients of 20 mm Hg or more (asymmetric septal hypertrophy, idiopathic hypertrophic subaortic stenosis, hypertrophic obstructive cardiomyopathy)	Coexisting CAD, aortic valvular disease, open heart surgery with myomectomy, valve replacement, or bypass grafting	Case-Control	Sudden death, (median follow-up for the control group–68 months, and for the MB group–50 months), pathologic Q waves	20 with MB (0 CVDs, 5 with pathological Q waves) 46 without MB (2 CVDs, 6 with pathological Q waves)	6	Moderate
<i>La Grutta, 2012</i> ⁹⁵	CT, 64	Italy	Consecutive patients	Known CAD (coronary revascularization by either cardiac surgery or angioplasty)	Retrospective	Positive ECG stress tests	73 with MB (4 with positive stress test) 181 without MB (21 with positive stress test)	6	Low
<i>Lee, 2014</i> ⁷⁵	CAG	Korea	Consecutive subjects with implanted Drug Eluting Stents	—	Prospective	MACE (cardiac death, myocardial infarction, TLR, including ischaemic TLR, and stent thrombosis, follow-up–3 years)	94 with MB (0 CVD, 3 MI, 21 TLR, 1 stent thrombosis) 457 without MB (10 CVD, 12 MI, 30 TLR, 3 stent thrombosis)	8	Moderate
<i>Marcos-Alberca, 2011</i> ⁹⁶	CT, 64	Spain	Stable chest pain and intermediate risk of CAD	—	Prospective	MACE (cardiac death, MI, TLR), follow-up–6.4 months	31 with MB (CVD 0, MI 1, revascularization 2) 43 without MB (CVD 0, MI 1, TLR 0)	6	Low
<i>Mohiddin, 2000</i> ⁹⁷	CAG	US	Paediatric subjects with HCM	—	Prospective	Myocardial ischemia as detected by abnormal thallium scintigraphy, sudden death (cardiac arrest). Follow-up up to the age of 20.	23 with MB (17 abnormal exercise thallium scintigraphy, 1 sudden death, 1 cardiac arrest) 34 without MB (14 abnormal thallium cardiac scintigraphy, 1 sudden death, 3 cardiac arrest)	8	Moderate

Continued

Study, Year	Method	Country	Main Inclusion Criteria	Main Exclusion Criteria (Cardiovascular)	Type	Endpoint, Follow-up	Subjects	Quality	Bias
<i>Rha, 2012</i> ⁹⁸	CAG	Korea	Consecutive subjects,	Significant CAD	Prospective	MACE (cardiovascular death, MI, revascularization), unspecified follow-up	367 with MB (0, 0 MI, 2 revascularization) 1027 without MB (2 CVDs, 1 MI, 6 revascularization)	8	Moderate
<i>Rubinshtein, 2013</i> ⁹⁹	CT, 64	Israel	Subjects with chest pain syndromes	Obstructive CAD, revascularization	Prospective	MACE (CVD, MI), followed for 6.1 +/- 1 years	117 with MB (4 CVDs, 2 MI) 217 without MB (6 CVDs, 1 MI)	8	Low
<i>Schwartz, 2008</i> ¹⁰⁰	CAG	US	Suspected myocardial ischemia, without CAD at coronary angiography	Significant CAD, severe LVH, other cardiac diseases	Case-Control	MI (through ECG changes) SPECT Signs of ischemia, exercise testing	157 with MB (25 MI, 11 ST changes, 51 ischemia/MI through SPECT, 23 + exercise stress testing) 100 without MB (13 MI, 5 ST changes, 36 ischemia through SPECT, 18 + exercise stress testing)	2	Low
<i>Sheu, 2011</i> ¹⁰¹	CT, 64	Taiwan	Subjects that underwent CT for known or suspected coronary artery disease or self-referral for physical check-up	Documented CAD, PTCA, CABG	Prospective	MACE (revascularization), follow-up-21.91 months	89 with MB (0 TLR) 336 without MB (9 TLR)	10	Low
<i>Sorajja, 2003</i> ⁸⁸	CAG	US	HCM	absence of any other cardiac/systemic disease, able to cause the observed hypertrophy	Prospective	Cardiovascular death, follow-up - 6.8 years	54 with MB (5 CVDs, of which 0 due to MI) 361 without MB (33 CVDs, of which 3 due to MI)	6	Moderate
<i>Verhagen, 2013</i> ⁹⁹	CT, 64	Netherlands	Stable or unstable angina pectoris	PTCA, CABG	Retrospective	History of MI	40 with MB (8 with MI) 88 without MB (21 with MI)	9	Low
<i>Wang, 2008</i> ⁹⁹	IVUS	China	Typical or atypical angina	Irregular heart rate, congestive heart failure, chronic pulmonary of kidney diseases	Retrospective	Exercise stress testing	30 with MB (29 with + stress exercise testing) 21 without MB (18 with + stress exercise testing)	7	Low
<i>Wang, 2013</i> ⁵⁷	CT, 64	China	Chest pain or suspected CAD	chronic kidney disease, hypertrophic cardiomyopathy, valvular or congenital heart disease, and non-sinus rhythm	Prospective	AMI, follow-up 3 years	261 with MB (7 with MI) 2057 without MB (98 with MI)	2	Moderate
<i>Xiang, 2009</i> ¹⁰³	CAG	China	Atypical chest pain at rest or after exercise, especially at night	Significant coronary stenosis, heart failure, syncope, Adam-Stokes syndrome, hypertrophic cardiomyopathy, PTCA, valvular disease	Retrospective	Myocardial ischemia on Thallium scintigraphy, + exercise stress testing	68 with MB (45 + for myocardial ischemia using scintigraphy, 48 + for stress exercise testing) 148 without MB (12 + for myocardial ischemia using scintigraphy, 3 + for stress exercise testing)	10	Low
<i>Yan, 2006</i> ¹⁰⁴	CAG	China	Acute STEMI who underwent primary PTCA procedures	Surgery	Prospective	MACE, In Hospital mortality, follow-up up to 6 months	46 with MB (12 CVDs, 2 TLRs) 508 without MB (29 CVDs, 18 TLRs)	1	High
<i>Yetman, 1998</i> ²⁸	CAG	Canada	Pediatric subjects with HCM	Other potential causes for cardiac hypertrophy	Prospective	ECG changes (ST-segment changes at initial admission), cardiac arrest, death. Follow-up 7.1 years	10 with MB (3 sudden death, 4 cardiac arrest, 7 ST changes) 26 without MB (2 sudden death, 0 cardiac arrest, 9 ST changes)	8	High

Table 1. Studies included in the analysis.

found that studies that were not done specifically for HCM had an OR = 1.71 (1.10–2.67), while studies that were done on subjects with HCM had an OR = 0.60(0.38–1.28). See Fig. 3.

Myocardial infarction. Thirteen studies contained data about a potential correlation between MB and MI. The presence of MB did not lead to a significantly increased risk for MI - OR = 1.18(0.84–1.66), $p = 0.30$

(Fig. 4). The publication bias was minimal (LFK index = 0.30). The heterogeneity of the included studies was low ($I^2 = 27\%$). Meta-regression analysis did not show any significant effects on the result determined by age, gender, systemic hypertension, hyperlipidemia, previous angina, diabetes mellitus or smoking (see Table 2). By performing a subgroup analysis, based on whether the studies considered significant coronary artery disease as an either inclusion or exclusion criteria, we found that, if the presence of CAD was used as an inclusion criteria, OR for MI was 0.74(0.43–1.25), and if it was used as an exclusion criteria – 1.45 (0.87–2.39).

Cardiovascular death. Eight studies included data about a potential correlation between MB and cardiovascular death. The presence of MB did not lead to a significant increase in the risk of cardiovascular death - OR = 2.19(0.65–7.43) (Fig. 5). The publication bias is minor (LFK index = –1.28). The heterogeneity of the included studies was moderate to high ($I^2 = 70\%$). Meta-regression analysis found a positive correlation between CVD risk and the increase in age differential between subjects with MB versus subjects without MB; (see Table 2).

Myocardial ischemia. Nine studies included data about a potential correlation between MB and myocardial ischemia. Two studies contained more than one method of assessing myocardial ischemia (Xiang and Schwartz), and we took into account in both cases the outcome with the most number of positive subjects. The presence of MB was significantly associated with myocardial ischemia - OR = 3.00(1.02–8.82) (Fig. 6). The publication bias was minor (LFK index = –1.68). The heterogeneity of the included studies was high ($I^2 = 89\%$). Meta-regression analysis did not show any significant effects on the result determined by age, gender, systemic hypertension, hyperlipidemia, previous angina, diabetes mellitus or smoking (see Table 2).

Discussions

Our study revealed that, overall, MB increases the risk for MACE and myocardial ischemia, and subsequently a possible connection between it and various cardiovascular pathologies cannot be excluded. The physiological characteristics and morphological consequences of MB are still not yet fully elucidated, even if there are many studies analysing specifically with these issues.

Even if MB mainly causes a systolic narrowing of the affected coronary, both cardiac phases are affected. Intracoronary Doppler showed a finger-tip-like antegrade flow of the blood in most MB patients, characterised by a sharp increase in coronary flow velocity during early diastole, followed by a steep decrease in speed, leading to a plateau in mid-late diastole⁴¹. During systole, the antegrade flow is decreased, absent, or even reversed, due to the systolic squeezing of the bridged coronary segment⁴¹. Ge *et al.* showed the pressure within the segment proximal of the MB to be much higher than the pressure in the aorta and that the maximum pressure in the proximal segment is reached in mid-systole compared to normal segments is reached in the end-systole⁴². During end-diastole, the myocardium dilates, triggering a negative pressure in the mural segment, and an increased pressure gradient between the bridged segment and the neighbouring areas (the so-called sucking phenomenon)⁴². The systolic compression is usually eccentric, and only rarely concentric, leading to a half-moon like echo-lucent area neighbouring the bridge when viewed through IVUS⁴¹. Previous studies showed that systolic compression by the bridge could be either elliptical, associated with a 50% reduction of the luminal area, or concentric, associated with a 75% reduction⁴³. Other authors showed that, if superficial and short MBs do not lead to significant hemodynamic effects, this is not the case with deep and long variants, which may cause severe ischemia or cardiovascular events⁴⁴. Hostiu *et al.* showed that hemodynamically significant MB is associated with increased fibrosis and interstitial edema in subjects who died suddenly and had no other apparent cause of death, suggesting that the most likely cause of death was electrical instability⁶, which is known to be associated with increased myocardial fibrosis^{45,46}.

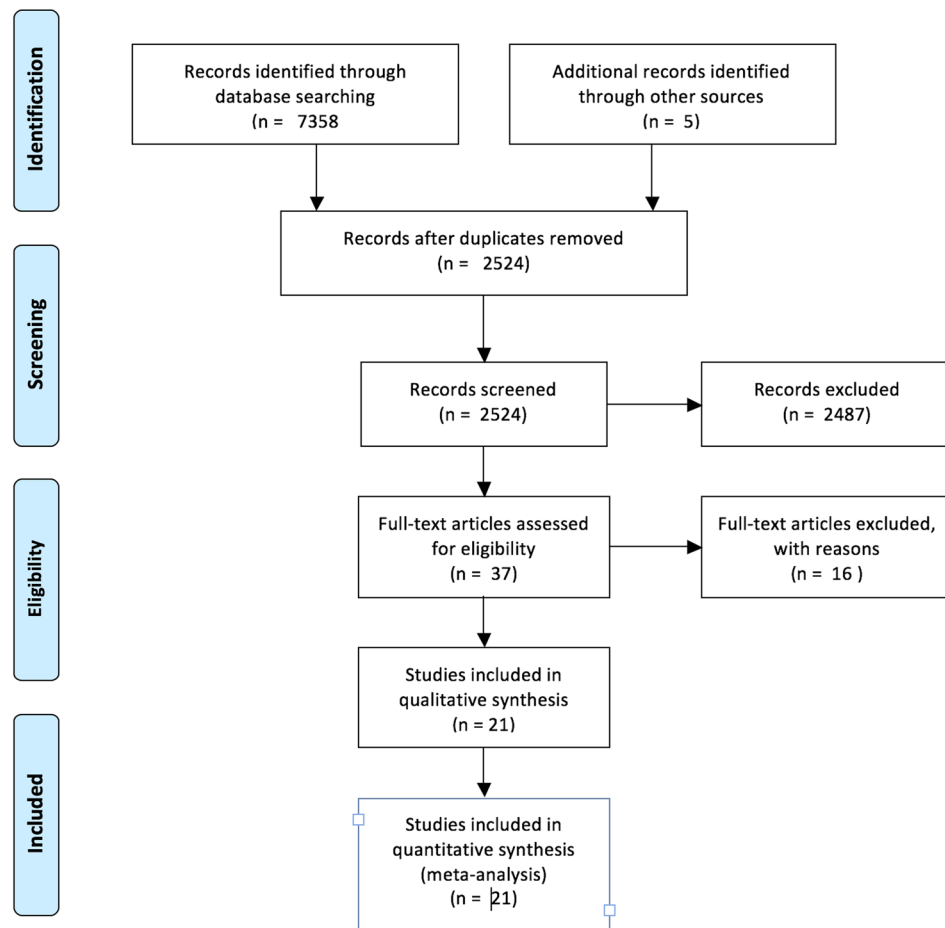
Endothelial dysfunction is an early phase of atherogenesis⁴⁷. Numerous studies reported an alteration of the normal endothelial physiology associated with MB, including an abnormal response to acetylcholine (ACh) or decreased responses to NO and endothelin-1. Acetylcholine acts as an endothelium-dependent vasodilator, by stimulating the release of EDRE, if the endothelium is intact⁴⁸. If however there are endothelial lesions (including atherosclerotic disease), ACh will cause smooth muscle constriction⁴⁹. ACh-generated vasoconstriction was often showed to be associated with MB. For example, Kuhn revealed that vasoconstriction after the administration of ACh is higher in the coronary segment containing a MB compared to non-bridged segments⁵⁰. Kim *et al.* showed that, after infusion with ACh, subjects with MB have a statistically significant increase in focal vasoconstriction in the mural segment, compared to similar, non-bridged coronary segments from the control group⁵¹. Teragawa showed that subjects with MB have an almost two-fold increase in the rate of coronary spasm compared with the control group⁵². Zoghi *et al.* showed, by measuring flow-mediated dilatation in the brachial artery, that the presence of MB also leads to remote vasoconstrictive effects⁵³. Herrmann demonstrated that MB causes an increased shear stress and significant vasoconstriction after the administration of ACh without changes in the coronary blood flow¹⁶. Masuda *et al.* found that bridged LAD segments have a weaker immunoreaction to endothelial nitric oxide synthase (eNOS) and endothelin-1 (ET-1) compared to the proximal and distal segments⁵⁴. NO leads to vasodilatation, and it might be involved in the “sucking phenomenon” described by Ge⁴².

The segment proximal to the MB is put at a high wall shear stress due to the significant pressure gradients between the bridged area and the proximal coronary segment⁴², potentially causing a chronic coronary pressure overload (CCPO)¹⁶. CCPO is associated with significant endothelial changes, including intimal thickening, medial thickening, disruption of the internal elastic lamina or endothelium⁵⁵, favouring the appearance of atherosclerosis.

Nakaura *et al.* showed that mid-LAD MB is strongly positively associated with atherosclerosis (OR = 4.99). They did not mention, however, the location of the atherosclerotic plaques (distally, intramural or proximal from the bridged area). Hong *et al.* found that the prevalence of lesions located distally from the MB was significantly lower compared to those located proximally (5.9% versus 62.4%). In their article age, male gender, a history of



PRISMA 2009 Flow Diagram



From: Moher D, Liberati A, Tetzlaff J, Altman DG, The PRISMA Group (2009). Preferred Reporting Items for Systematic Reviews and Meta-Analyses: The PRISMA Statement. *PLoS Med* 6(6): e1000097. doi:10.1371/journal.pmed1000097

For more information, visit www.prisma-statement.org.

Figure 1. PRISMA flow diagram (The PRISMA Statement and the PRISMA Explanation and Elaboration document are distributed under the terms of the Creative Commons Attribution License, which permits unrestricted use, distribution, and reproduction in any medium, provided the original author and source are credited)⁴⁰.

diabetes mellitus, systemic hypertension, bifurcated vascular lesions, smoking index, or hyperlipidemia increased the severity of the coronary stenosis⁵⁶. Wang *et al.* showed that MB (both superficial and deep) is associated with non-significant stenosis proximal to the bridged area and that MB in middle LAD is positively associated with stenosis in non-bridged arteries. The most likely explanation for the latter is the fact that deep MB has hemodynamic significance, causing a disturbed flow in the other coronaries, and therefore increases the frequency of atherosclerotic deposits⁵⁷. By compressing the tunnelled artery during systole, MB increases lymph drainage of the vessel wall, protecting against lipid accumulation within the bridged coronary wall^{57,58}. Verhagen *et al.* suggested that the reason for the lack of atherosclerosis under the bridged coronary is represented by a lack of exposure to perivascular adipose tissue at that site, which is known to secrete pro-inflammatory adipokines and cytokines⁵⁹. Saidi *et al.*, on the other hand, showed that between the bridged muscle and the coronary is sometimes interposed an adipose layer, which they hypothesised to act as a cushion, limiting the compressing forces acting upon the bridged coronary segment⁶⁰. However, this layer would, in fact, secrete pro-inflammatory adipokines and cytokines. Locally increased eNOS is known to be associated with increased atherosclerosis in coronary arteries^{54,61}; therefore, increased eNOS levels proximally from the bridged segment might be involved in the development of proximal segment atherosclerosis. Another explanation for the distribution of atherosclerosis/around

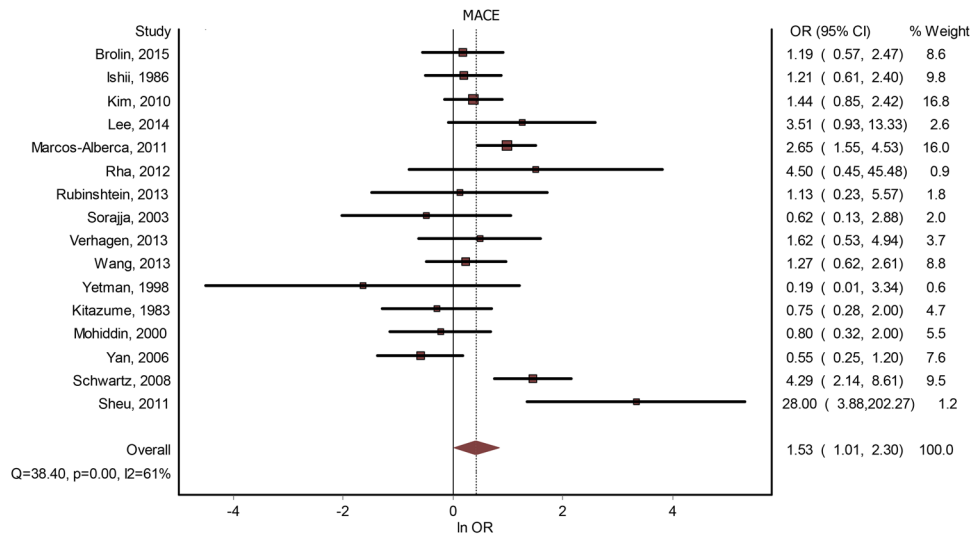


Figure 2. MB and MACE. Forest plot.

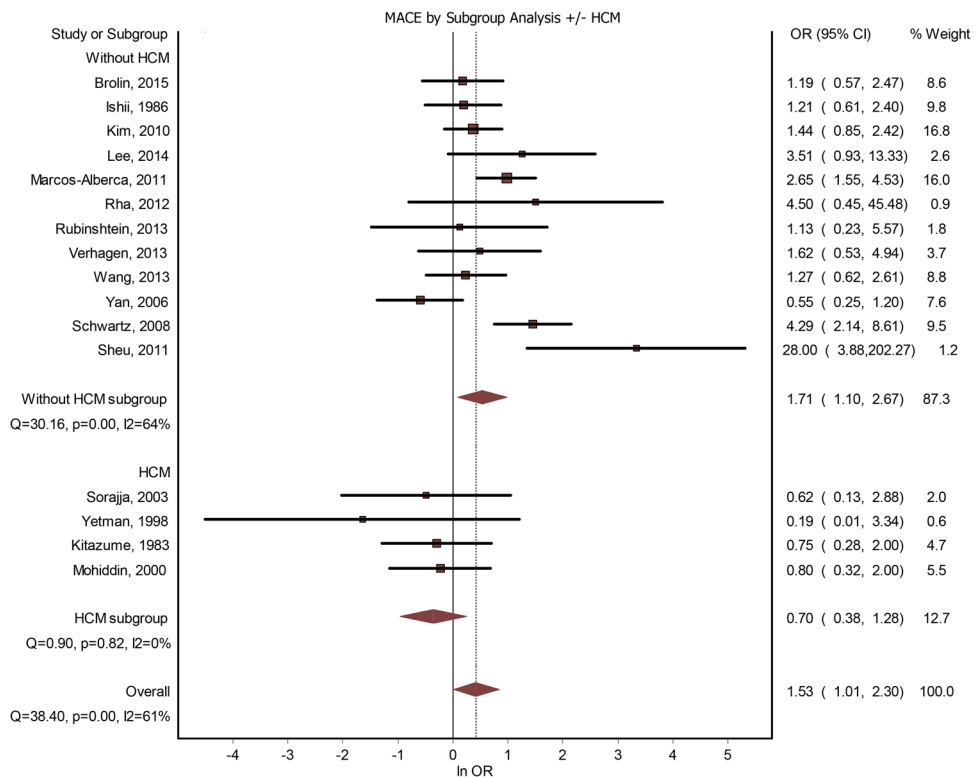


Figure 3. Subgroup analysis. MACE with/without HCM. Forest plot.

Effect	Age	Gender	HTA	Hyperlipidemia	Diabetes	Angina	Smoking	Depth	Length
MACE	2.71 (p=0.068)	-0.12	1.14	-0.23	0.68	1.02	-0.82	0.66	1.56
AMI	0.16	0.36	-0.19	-0.29	0.53	0.02	0.53		
CVD	2.39 (p=0.017)	-0.09		0.24	—	—	—		
Myocardial ischemia	0.09	-0.94	-0.91	-0.75	0.23	0.16	1.15		

Table 2. Z values for meta-regression analysis.

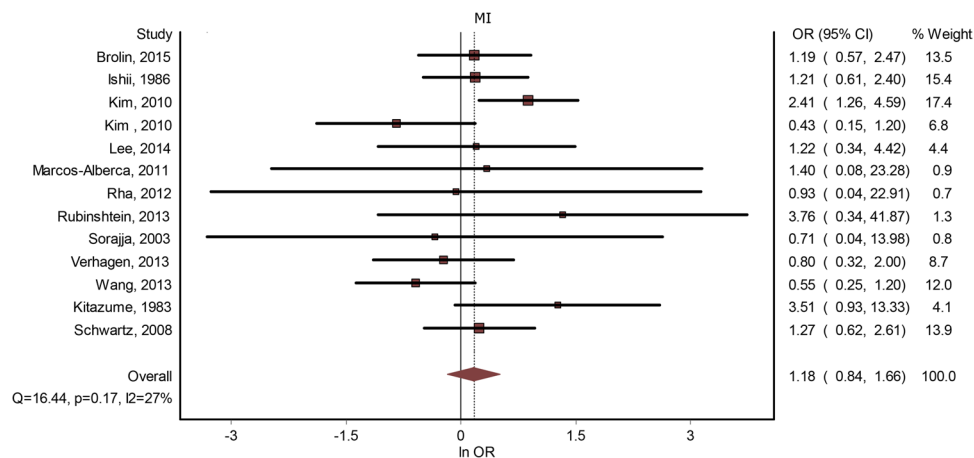


Figure 4. MB and MI. Forest plot.

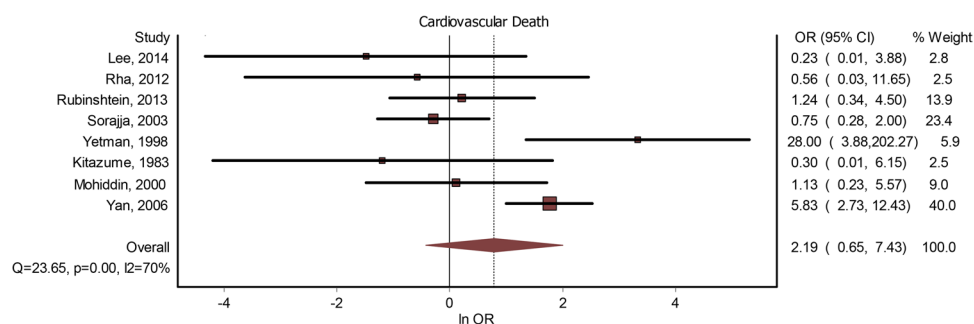


Figure 5. MB and CVD. Forrest plot.

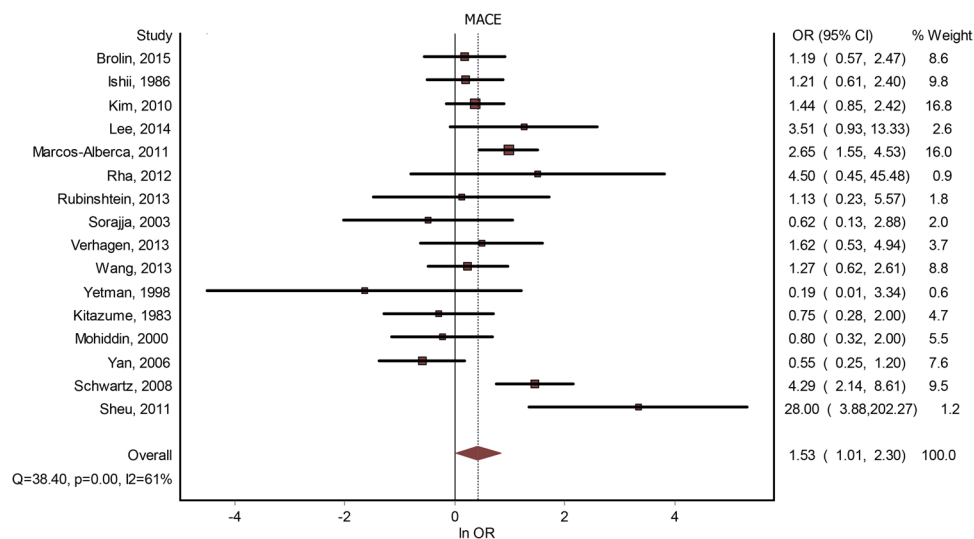


Figure 6. Myocardial ischemia and MB. Forest plot.

the bridged area might be represented by the shape of the endothelial cells, which are spindle-shaped under the bridge, suggesting they are under a high shear stress, while in other regions they have a polygonal distribution, suggesting they are subjected to a decreased shear stress^{58,62}. Increased shear stress seems to decrease monocyte adhesion and lipid transfer across the vascular wall, therefore decreasing the risk for atherosclerosis^{59,62}.

Bilen *et al.* showed that subjects with MB have a significantly increased mean platelet volume (MPV). Larger platelets are associated with increased reactivity and production of more prothrombotic factors⁶³. Potential causes for this result might be a reduced production of prostacyclin and nitric oxide, impairment of

endothelial-dependent vasorelaxation, increased proximal atherosclerosis, increased shear stress⁶⁴. This increased thrombogenic status might favour the development of coronary thrombosis or might increase its severity.

Numerous studies suggested or proved that MB is associated with various types of physiological changes. Ge *et al.* showed that MB leads to a decreased coronary flow velocity reserve, which remains higher proximally compared to distally from the bridged segment; also, coronary flow velocity reserve seems to be more affected in subjects with severe coronary stenosis⁴¹. Schwartz *et al.* quantified the decrease in the coronary flow reserve caused by MB – they found a mean ratio of 2.0 distally from the bridged coronary artery (normally the value is above 3)⁷. Fractional flow reserve is often used to quantify the physiological significance of CAD. It is not influenced by heart rate or blood pressure changes⁶⁵, nor by dobutamine challenge in subjects with fixed CAD⁶⁶. Diefenbach *et al.* showed that inotropic challenge leads to a significant increase in the degree and length of MB segments, as evaluated on CAG, compared to those obtained at rest in symptomatic subjects, suggesting the presence of a specific coronary physiological response to inotropic stimuli⁶⁷. Yoshino *et al.* proved that fractional flow reserve (FFR) to dobutamine challenge is significantly decreased in the presence of microvascular endothelial dysfunction⁶⁵. Heart rate recovery is a prognostic tool for the cardiac autonomic functions⁶⁸; increased heart rate recovery (HHR) was associated with decreased parasympathetic activity⁶⁹, a higher susceptibility for atherosclerosis, and increased five-year mortality⁷⁰. Okutucu showed the presence of MB on LAD to be a significant predictor for increased HHR at 1 minute ($b = -8.524$; 95% CI -14.934 to -2.113 ; $p = 0.009$), and argued that the finding was caused by silent or symptomatic myocardial ischemia. QT dispersion (QTd), defined as the minimum QT interval subtracted from the maximum, is an effective marker for electrical myocardial heterogeneity; higher values are associated with an increased risk of cardiac arrhythmias⁷¹. Aksan *et al.* demonstrated that subjects with MB have a significantly increased QTd during peak exercise compared with its baseline value (42.6 ms versus 36.4 ms), while in non-MB subjects the increase during peak exercise was not statistically significant (29.1 ms, versus a baseline value of 27.1 ms)⁷².

All these results come to confirm that, at least in some cases, MB may have various cardiovascular consequences. Our study showed that MB presence is associated with an increased risk of MACE and myocardial ischemia, but failed to show a possible positive correlation with CMH, MI, or cardiovascular death. However, even if these associations did not reach statistical significance, the variability of the confidence intervals is very high, which can be caused either by the heterogeneity of the studies included in the meta-analysis, or by a highly variable response to this condition (possibly dependent upon length, depth or the MB, its location, associated pathologies, and so on). The scientific literature analysis showed or suggested a series of associations between MB and cardiovascular pathologies, including, coronary spasm, MI, HCM, Takotsubo cardiomyopathy, arrhythmias, or sudden death.

The association between coronary artery spasm and MB was first implied by Grover *et al.*, who reported the case of a patient who developed CAS during cardiac pacing, an association that was later on confirmed by other studies (see e.g. ref.⁷³). Recent articles showed that patients with MB have a higher incidence of coronary vasospasm induced by ACh. Sung *et al.* showed that patients with MB who responded to lower doses of ACh had a more severe decrease of the luminal diameter, and had a worse cumulative clinical outcome after 12 months compared to subjects who needed larger ACh doses for a positive response. The mechanical stress caused by the systolic narrowing is known to lead to endothelial dysfunction. Subjects with variant angina are known to be hyperactive to vasoconstrictor stimuli⁷⁴. Atherosclerotic epicardial vessels may present a paradoxical vasoconstriction caused by a direct stimulation of the mural smooth muscle, as a result of widespread endothelial dysfunction⁴⁹. Corroborated, these results might suggest that the coronary vasospasm associated with MB might lead to the development of myocardial ischemia, especially in the presence of other coronary pathologies^{71,75}.

De Agustin *et al.* showed that subjects with chest pain and without severe coronary artery stenosis are significantly more likely to have MB compared to those with severe CAD; moreover, in the MB subgroup hyperlipidemia was considerably less often found compared to the group of subjects without MB⁷⁶. Tang *et al.* showed that, in subjects with MB, cardiac ischemia is strongly associated with the degree of mean systolic narrowing, and suggested that the degree of systolic occlusion by the MB is responsible for the appearance of myocardial ischemia⁷⁷. Angelini *et al.* analysed the presence of MB in subjects with and without coronary artery disease, finding that its incidence is significantly lower in the group without CAD⁴³. They also showed that there is a higher incidence of MB in men and in subjects with a systolic overload of the left ventricle.

There are two core mechanisms through which MB is thought to cause myocardial ischemia and MI - the development of atherosclerosis proximally from the bridged segment⁷⁸, and a direct compression of the coronary artery by the MB⁷⁹. In subjects with MI, the thickness of the MB is, on average, greater compared to the ones found in subjects without MI⁸⁰. Takamura *et al.* studied two groups of subjects: one with MI in the area supplied by the LAD and without MB on LAD and one with MI in any myocardial area associated with MB on LAD, and found that, if the acute occlusion occurred in the LAD segment proximal from the MB, the length and thickness of the MB were significantly greater, and the distance from the ostium of the LCA to the MB was significantly shorter compared to those without an acute occlusion on the LAD proximally to the MB⁸¹.

The blood flow during systole is small compared to the one from diastole in normal conditions; this is not the case in tachycardia, when the end-diastolic volume decrease is greater compared to end-systolic volume⁸², potentially leading to myocardial ischemia. In this instance, the blood supply of the myocardium becomes more dependent upon the systolic blood flow, which is impaired by the bridge. There were some cases published in the scientific literature in which tachycardia was associated with MB. Feld, for example, described a patient who, during stage 5 of the Bruce protocol, developed significant flat ST depressions, followed by a complex tachycardia with a rate of 280 bpm, associated with a MB on LAD²⁰. Den Dulk *et al.* presented the case of a patient with exercise-induced paroxysmal atrioventricular block²¹. Kracoff *et al.* published the case of a 35 years-old patient, with recent onset angina, who developed episodes of syncope caused by ventricular tachycardia, which was suggested to have been caused by a myocardial bridge⁸³. Left ventricular systolic dyssynchrony or intraventricular

dyssynchrony, is characterized by a delay or heterogeneity in the timing of contraction in different myocardial segments of the left ventricle. It is usually found in heart failure, and it is proven to cause a more severe myocardial disease and a poorer cardiovascular prognosis. Cai Wei *et al.* showed that mid-LAD MB is associated with an increased prevalence of left ventricular systolic dyssynchrony (LVSD) compared to subjects without MB; moreover, the stenosis caused by the MB and the length of the mural segment have a synergistic effect on the development of LVSD⁸⁴.

Lee *et al.* found that MB is an independent predictor for MACE in patients with eluting drug stents (adjusted OR = 2.897)⁷⁵. Similarly, Tsujita *et al.* found that subjects undergoing eluting drug stents for coronary artery disease in the proximal part of the LAD, and who had detectable MB distal of the stented lesion, had a significantly decreased minim stent area at the end of the procedure, and a higher target lesion vascularization rate⁸⁵.

Hypertrophic cardiomyopathy, an inherited cardiovascular disease that can lead to SCD, heart failure, or stroke, is believed to be associated very often with MB^{86,87}. Earlier studies implied a possible correlation between HCM with MB and SCD in some subgroups of patients. For example, Yetman *et al.* showed that MB in children with HCM is a risk factor for SCD²⁸. However, more recent ones failed to prove a positive correlation. Tian *et al.* showed that, in autopsy cases, MB is not associated with SCD in HCM⁴⁴. Basso *et al.* found that patients with HCM who died suddenly do not have a higher prevalence of MB compared to subjects with HCM who died from heart failure or other modes of death; from the analysis of their results, however, the age of the subjects with SCD was much lower (22 years, compared with 54 and 67 in the other two groups), the length and depth were higher, and the proportion of associated CAD much lower⁸⁷. Sorajja *et al.* showed that there is no statistically significant difference regarding five-year survival between subjects with and without MB⁸⁸. Our study showed that, when we excluded studies in which HCM was used as an inclusion criteria, MB increased the risk for MACE. More studies are however needed in the area before either establishing or excluding a causal link between these two pathologies.

Some studies suggested that MB is more frequent in patients with apical ballooning syndrome^{26,89}, but not in midventricular or basal ballooning⁸⁹; in these cases, MB might influence the development of Takotsubo cardiomyopathy through the generation of microvascular dysfunction and altered sympathetic activity, possibly associated with recurrent LAD segments⁸⁹; more studies are needed in this area to reach definite conclusions.

Limits. A very high variability of the results, associated with a limited number of studies for testing associations between MB and various cardiovascular consequences. Many studies did not include comprehensive inclusion and exclusion criteria, or complete descriptive data, limiting the number of subgroup analyses we were able to perform. Due to the presence of highly different methodologies, and inclusion and exclusion criteria, there can be a significant selection bias, which was attempted to be minimized through subgroup analyses and meta-regression.

Conclusions

Overall, myocardial bridging may have significant cardiovascular consequences (MACE, myocardial ischemia). More studies are needed to reveal/refute a clear association with MI, sudden death or other cardiovascular pathologies.

References

1. Reymann, H. C. Dissertationem inauguralem De Vasis Cordis Propriis. Ed. Vandenhoeck, Goettingen, NL (1737).
2. Crainicianu, A. Anatomische Studien über die Coronararterien und experimentelle Untersuchungen über ihre Durchgängigkeit. *Virchows Archiv für pathologische Anatomie und Physiologie und für klinische Medizin* **238**, 1–75 (1922).
3. Geiringer, E. The mural coronary. *American heart journal* **41**, 359–368 (1951).
4. Edwards, J., Burnside, C., Swarm, R. & Lansing, A. Arteriosclerosis in the intramural and extramural portions of coronary arteries in the human heart. *Circulation* **13**, 235–241 (1956).
5. Alegria, J. R., Herrmann, J., Holmes, D. R., Lerman, A. & Rihal, C. S. Myocardial bridging. *European Heart Journal* **26**, 1159–1168 (2005).
6. Hostiuc, S. *et al.* Morphological Changes Associated with Hemodynamically Significant Myocardial Bridges in Sudden Cardiac Death. *Thoracic and cardiovascular surgeon* **59**, 393–398, <https://doi.org/10.1055/s0030-1270703> (2011).
7. Schwarz, E. R. *et al.* Functional, angiographic and intracoronary Doppler flow characteristics in symptomatic patients with myocardial bridging: effect of short-term intravenous beta-blocker medication. *Journal of the American College of Cardiology* **27**, 1637–1645 (1996).
8. Pichard, A. D., Casanegra, P., Marchant, E. & Rodriguez, J. Abnormal regional myocardial flow in myocardial bridging of the left anterior descending coronary artery. *The American journal of cardiology* **47**, 978–982 (1981).
9. Aydar, Y. *et al.* Gender differences in the types and frequency of coronary artery anomalies. *The Tohoku journal of experimental medicine* **225**, 239–247 (2011).
10. Barutcu, I. *et al.* Effect of treadmill exercise testing on P wave duration and dispersion in patients with isolated myocardial bridging. *The international journal of cardiovascular imaging* **25**, 465–470 (2009).
11. Baryalei, M. M. *et al.* Off-pump supraarterial decompression myotomy for myocardial bridging. *The heart surgery forum*. Carden Jennings Publishing Co. **8**(1), E49–E54. (2005 Feb 1).
12. Carvalho, V. B. *et al.* Hemodynamic determinants of coronary constriction in human myocardial bridges. *American heart journal* **108**, 73–80 (1984).
13. Ferreira, A. *et al.* Myocardial bridges: morphological and functional aspects. *British heart journal* **66**, 364–367 (1991).
14. Gawor, R. *et al.* Myocardial perfusion GSPECT imaging in patients with myocardial bridging. *Journal of Nuclear Cardiology* **18**, 1059–1065 (2011).
15. Hazirolan, T. *et al.* Myocardial bridging on MDCT. *Am J Roentgenol* **188**, 1074–1080 (2007).
16. Herrmann, J., Higano, S. T., Lenon, R. J., Rihal, C. S. & Lerman, A. Myocardial bridging is associated with alteration in coronary vasoreactivity. *European heart journal* **25**, 2134–2142 (2004).
17. Tauth, J. & Sullebarger, J. T. Myocardial infarction associated with myocardial bridging: case history and review of the literature. *Catheterization and cardiovascular diagnosis* **40**, 364–367 (1997).

18. Arjomand, H., AlSalman, J., Azain, J. & Amin, D. Myocardial bridging of left circumflex coronary artery associated with acute myocardial infarction. *The Journal of invasive cardiology* **12**, 431 (2000).
19. Tio, R. A. & Ebels, T. Ventricular septal rupture caused by myocardial bridging. *The Annals of thoracic surgery* **72**, 1369–1370 (2001).
20. Feld, H. *et al.* Exercise-induced ventricular tachycardia in association with a myocardial bridge. *CHEST Journal* **99**, 1295–1296 (1991).
21. Den Dulk, K., Brugada, P., Braat, S., Heddle, B. & Wellens, H. J. Myocardial bridging as a cause of paroxysmal atrioventricular block. *Journal of the American College of Cardiology* **1**, 965–969 (1983).
22. Dermengiu, D. *et al.* Sudden death associated with borderline Hypertrophic Cardiomyopathy and multiple coronary anomalies. Case report and literature review. *Rom J Leg Med* **1**, 3–12 (2010).
23. Ceausu, M. *et al.* Sudden cardiac death due to triple myocardial bridging associated with atypical coronary topography. *Rom J Morphol Embryol* **54**, 833–837 (2013).
24. Shotar, A. & Busuttill, A. Myocardial bars and bridges and sudden death. *Forensic Sci Int* **68**, 143–147 (1994).
25. Dettmeyer, R. B. In *Forensic Histopathology* 241–282 (Springer, 2011).
26. Migliore, F. *et al.* LAD coronary artery myocardial bridging and apical ballooning syndrome. *JACC: Cardiovascular Imaging* **6**, 32–41 (2013).
27. Andò, G., Trio, O. & de Gregorio, C. Coronary spasm and myocardial bridging: an elusive pathophysiological mechanism leading to apical ballooning syndrome? *European Heart Journal: Acute Cardiovascular Care* **5**, 501–504 (2016).
28. Yetman, A. T., McCrindle, B. W., MacDonald, C., Freedom, R. M. & Gow, R. Myocardial bridging in children with hypertrophic cardiomyopathy—a risk factor for sudden death. *New England Journal of Medicine* **339**, 1201–1209 (1998).
29. Schyma, C., Doberentz, E., Morshuis, M. & Madea, B. Fatal case of a patient with cardiac assist system. *Rechtsmedizin* **23**, 410–414, <https://doi.org/10.1007/s00194-013-0889-2> (2013).
30. Quaranta, F. *et al.* Myocarditis in athlete and myocardial bridge: An innocent bystander? *World Journal of Cardiology* **7**, 293–298, <https://doi.org/10.4330/wjc.v7.i5.293> (2015).
31. Eren, B. & Turkmen, N. Myocardial bridging as a possible cause of unexplained sudden death: A case report. *Zdravniški Vestnik-Slovenian Medical Journal* **82**, 357–360 (2013).
32. Cutler, D. & Wallace, J. M. Myocardial bridging in a young patient with sudden death. *Clinical Cardiology* **20**, 581–583 (1997).
33. Curca, G. C., Drugescu, N., Ardeleanu, C. & Ceausu, M. Investigative protocole of sudden cardiac death in young adults. *Romanian Journal of Legal Medicine* **16**, 57–66 (2008).
34. Sunnassee, A., Shaohua, Z., Liang, R. & Liang, L. Unexpected death of a young woman: is myocardial bridging significant?—A case report and review of literature. *Forensic Sci Med Pat* **7**, 42–46, <https://doi.org/10.1007/s12024-010-9175-8> (2011).
35. Monroe, D. J., Meehan, J. T. & Schandl, C. A. Sudden Cardiac Death in a Young Man with Migraine-associated Arrhythmia. *Journal of Forensic Sciences* **60**, 1633–1636, <https://doi.org/10.1111/1556-4029.12836> (2015).
36. Shotar, A. & Busuttill, A. Myocardial bars and bridges and sudden-death. *Forensic Sci Int* **68**, 143–147, [https://doi.org/10.1016/0379-0738\(94\)90353-0](https://doi.org/10.1016/0379-0738(94)90353-0) (1994).
37. Hong, L., Liu, J., Luo, S. & Li, J. *Chinese Medical Journal* **127**(5), 945–950 (2014).
38. Moher, D., Liberati, A., Tetzlaff, J., Altman, D. G. & Group, P. Preferred reporting items for systematic reviews and meta-analyses: the PRISMA statement. *PLoS medicine* **6**, e1000097 (2009).
39. Chen, Y., Zhang, Y., Tang, Y., Huang, X. & Xie, Y. High-maintenance-dose clopidogrel in patients undergoing percutaneous coronary intervention: a systematic review and meta-analysis. *PLoS one* **8**, e78549 (2013).
40. Moher, D., Liberati, A., Tetzlaff, J., Altman, D. G. & Group, P. Preferred reporting items for systematic reviews and meta-analyses: the PRISMA statement. *Int J Surg* **8**, 336–341 (2010).
41. Ge, J. *et al.* New signs characteristic of myocardial bridging demonstrated by intracoronary ultrasound and Doppler. *European Heart Journal* **20**, 1707–1716 (1999).
42. Ge, J., Erbel, R., Gørgø, G., Haude, M. & Meyer, J. High wall shear stress proximal to myocardial bridging and atherosclerosis: intracoronary ultrasound and pressure measurements. *British heart journal* **73**, 462–465 (1995).
43. Angelini, P., Trivellato, M., Donis, J. & Leachman, R. D. Myocardial bridges: a review. *Progress in cardiovascular diseases* **26**, 75–88 (1983).
44. Tian, T. *et al.* Myocardial Bridging as a Common Phenotype of Hypertrophic Cardiomyopathy Has No Effect on Prognosis. *The American journal of the medical sciences* **347**, 429–433 (2014).
45. Barr, C. S., Naas, A., Freeman, M., Lang, C. C. & Struthers, A. D. QT dispersion and sudden unexpected death in chronic heart failure. *The Lancet* **343**, 327–329 (1994).
46. Marra, M. P. *et al.* Impact of the presence and amount of myocardial fibrosis by cardiac magnetic resonance on arrhythmic outcome and sudden cardiac death in nonischemic dilated cardiomyopathy. *Heart Rhythm* **11**, 856–863 (2014).
47. Zeiher, A. M., Drexler, H., Wollschläger, H. & Just, H. Modulation of coronary vasomotor tone in humans. *Progressive endothelial dysfunction with different early stages of coronary atherosclerosis*. *Circulation* **83**, 391–401 (1991).
48. Vita, J. A. *et al.* Coronary vasomotor response to acetylcholine relates to risk factors for coronary artery disease. *Circulation* **81**, 491–497 (1990).
49. Ludmer, P. L. *et al.* Paradoxical vasoconstriction induced by acetylcholine in atherosclerotic coronary arteries. *New England Journal of Medicine* **315**, 1046–1051 (1986).
50. Kuhn, F. E. *et al.* Evidence for endothelial dysfunction and enhanced vasoconstriction in myocardial bridges. *American heart journal* **122**, 1764–1766 (1991).
51. Kim, J. W. *et al.* Myocardial bridging is related to endothelial dysfunction but not to plaque as assessed by intracoronary ultrasound. *Heart* **94**, 765–769 (2008).
52. Teragawa, H. *et al.* Myocardial bridging increases the risk of coronary spasm. *Clinical cardiology* **26**, 377–383 (2003).
53. Zoghi, M. *et al.* Impaired endothelial function in patients with myocardial bridge. *Echocardiography* **23**, 577–581 (2006).
54. Masuda, T. *et al.* The effect of myocardial bridging of the coronary artery on vasoactive agents and atherosclerosis localization. *The Journal of pathology* **193**, 408–414 (2001).
55. Ghaleh, B. *et al.* Selective large coronary endothelial dysfunction in conscious dogs with chronic coronary pressure overload. *Am J Physiol-Heart C* **274**, H539–H551 (1998).
56. Hong, H. *et al.* Angiographically evident atherosclerotic stenosis associated with myocardial bridging and risk factors for the artery stenosis located proximally to myocardial bridging. *Anadolu Kardiyoloji Dergisi: AKD* **14**, 40 (2014).
57. Wang, Y. *et al.* Intramural coronary arterial course is associated with coronary arterial stenosis and prognosis of major cardiac events. *Arteriosclerosis, thrombosis, and vascular biology* **33**, 439–444 (2013).
58. Ishii, T. *et al.* The significance of myocardial bridge upon atherosclerosis in the left anterior descending coronary artery. *The Journal of pathology* **148**, 279–291 (1986).
59. Verhagen, S. N. *et al.* Relationship between myocardial bridges and reduced coronary atherosclerosis in patients with angina pectoris. *Int J Cardiol* **167**, 883–888 (2013).
60. Saidi, H., Ongeti, W. & Ogeng'o, J. Morphology of human myocardial bridges and association with coronary artery disease. *African health sciences* **10** (2010).

61. Wilcox, J. N. *et al.* Expression of multiple isoforms of nitric oxide synthase in normal and atherosclerotic vessels. *Arteriosclerosis, thrombosis, and vascular biology* **17**, 2479–2488 (1997).
62. Scher, A. M. Absence of atherosclerosis in human intramyocardial coronary arteries: a neglected phenomenon. *Atherosclerosis* **149**, 1–3 (2000).
63. Bilen, E. *et al.* Increase in mean platelet volume in patients with myocardial bridge. *Clinical and Applied Thrombosis/Hemostasis* **19**, 437–440 (2013).
64. Yuri Gasparyan, A., Ayyvazyan, L., P Mikhailidis, D. & Kitas, D. G. Mean platelet volume: a link between thrombosis and inflammation? *Curr Pharm Design* **17**, 47–58 (2011).
65. Yoshino, S. *et al.* Fractional flow reserve with dobutamine challenge and coronary microvascular endothelial dysfunction in symptomatic myocardial bridging. *Circulation Journal* **78**, 685–692 (2014).
66. Bartunek, J., Wijns, W., Heyndrickx, G. R. & de Bruyne, B. Effects of dobutamine on coronary stenosis physiology and morphology. *Circulation* **100**, 243–249 (1999).
67. Diefenbach, C., Erbel, R., Treese, N., Bollenbach, E. & Meyer, J. Incidence of myocardial bridges after adrenergic stimulation and decreasing afterload in patients with angina pectoris, but normal coronary arteries. *Zeitschrift für Kardiologie* **83**, 809–815 (1994).
68. Okutucu, S. *et al.* Assessment of cardiac autonomic functions by heart rate recovery indices in patients with myocardial bridge. *Cardiology journal* **23**, 524–531, <https://doi.org/10.5603/CJ.a2016.0046> (2016).
69. Tang, Y.-D., Dewland, T. A., Wencker, D. & Katz, S. D. Post-exercise heart rate recovery independently predicts mortality risk in patients with chronic heart failure. *J Card Fail* **15**, 850–855 (2009).
70. Nishime, E. O., Cole, C. R., Blackstone, E. H., Pashkow, F. J. & Lauer, M. S. Heart rate recovery and treadmill exercise score as predictors of mortality in patients referred for exercise ECG. *Jama* **284**, 1392–1398 (2000).
71. Aksan, G. *et al.* Exercise-Induced Repolarization Changes in Patients with Isolated Myocardial Bridging. *Med Sci Monitor* **21**, 2116–2124 (2015).
72. Aksakal, A., Urumdas, M., Yaman, M., Ates, A. H. & Arslan, U. Prevalence and three-year follow-up of patients with isolated myocardial bridge in the mid-Black Sea region: a retrospective single-center study. *Türk Kardiyoloji Dernegi Arsivi-Archives of the Turkish Society of Cardiology* **44**, 203–206, <https://doi.org/10.5543/tkda.2015.32754> (2016).
73. Ciampicotti, R. & El Gamal, M. Vasospastic coronary occlusion associated with a myocardial bridge. *Catheterization and Cardiovascular Interventions* **14**, 118–120 (1988).
74. Kaski, J. C. *et al.* Local coronary supersensitivity to diverse vasoconstrictive stimuli in patients with variant angina. *Circulation* **74**, 1255–1265 (1986).
75. Lee, C.-H., Kim, U., Park, J.-S. & Kim, Y.-J. Impact of Myocardial Bridging on the Long-term Clinical Outcomes of Patients with Left Anterior Descending Coronary Artery Disease Treated with a Drug-Eluting Stent. *Heart, Lung and Circulation* **23**, 758–763 (2014).
76. de Agustín, J. A. *et al.* Myocardial bridging assessed by multidetector computed tomography: likely cause of chest pain in younger patients with low prevalence of dyslipidemia. *Revista Española de Cardiología (English Edition)* **65**, 885–890 (2012).
77. Tang, K. *et al.* The role of myocardial perfusion imaging in evaluating patients with myocardial bridging. *Journal of Nuclear Cardiology* **18**, 117–122 (2011).
78. Ishikawa, Y. *et al.* Anatomic properties of myocardial bridge predisposing to myocardial infarction. *Circulation* **120**, 376–383 (2009).
79. Möhlenkamp, S., Hort, W., Ge, J. & Erbel, R. Update on myocardial bridging. *Circulation* **106**, 2616–2622 (2002).
80. Ishikawa, Y. *et al.* Histopathologic profiles of coronary atherosclerosis by myocardial bridge underlying myocardial infarction. *Atherosclerosis* **226**, 118–123 (2013).
81. Takamura, K. *et al.* Anatomical characteristics of myocardial bridge in patients with myocardial infarction by multi-detector computed tomography. *Circulation Journal* **75**, 642–648 (2011).
82. Hunt, D., Burdeshaw, J. & Baxley, W. Left ventricular volumes during ventricular tachycardia, first post-tachycardia beat, and subsequent beats in normal rhythm. *British heart journal* **36**, 148 (1974).
83. Kracoff, O. H., Ovsyshcher, I. & Gueron, M. Malignant course of a benign anomaly: Myocardial bridging. *Chest* **92**, 1113–1115, <https://doi.org/10.1378/chest.92.6.1113> (1987).
84. Cai, W. *et al.* Left ventricular systolic dyssynchrony in patients with isolated symptomatic myocardial bridge. *Scandinavian Cardiovascular Journal* **47**, 11–19 (2013).
85. Tsujita, K. *et al.* Impact of myocardial bridge on clinical outcome after coronary stent placement. *The American journal of cardiology* **103**, 1344–1348 (2009).
86. Maron, B. J., Wolfson, J. K., Epstein, S. E. & Roberts, W. C. Intramural (“small vessel”) coronary artery disease in hypertrophic cardiomyopathy. *Journal of the American College of Cardiology* **8**, 545–557 (1986).
87. Basso, C. *et al.* Myocardial bridging, a frequent component of the hypertrophic cardiomyopathy phenotype, lacks systematic association with sudden cardiac death. *European heart journal* **30**, 1627–1634 (2009).
88. Sorajja, P. *et al.* Myocardial bridging in adult patients with hypertrophic cardiomyopathy. *Journal of the American College of Cardiology* **42**, 889–894 (2003).
89. Stiermaier, T. *et al.* Frequency and significance of myocardial bridging and recurrent segment of the left anterior descending coronary artery in patients with takotsubo cardiomyopathy. *The American journal of cardiology* **114**, 1204–1209 (2014).
90. Brolin, E. B. *et al.* Prevalence of Myocardial Bridging in Patients With Myocardial Infarction and Nonobstructed Coronary Arteries. *American Journal of Cardiology* **116**, 1833–1839, <https://doi.org/10.1016/j.amjcard.2015.09.017> (2015).
91. Canyigit, M. *et al.* Myocardial bridging as evaluated by 16 row MDCT. *European journal of radiology* **69**, 156–164 (2009).
92. Kim, S.-S. *et al.* Long-term clinical course of patients with isolated myocardial bridge. *Circulation Journal* **74**, 538–543 (2010).
93. Kim, J. W. *et al.* Comparison of frequency of coronary spasm in Korean patients with versus without myocardial bridging. *The American journal of cardiology* **100**, 1083–1086 (2007).
94. Kitazume, H. *et al.* Myocardial bridges in obstructive hypertrophic cardiomyopathy. *American heart journal* **106**, 131–135 (1983).
95. La Grutta, L. *et al.* Atherosclerotic pattern of coronary myocardial bridging assessed with CT coronary angiography. *The international journal of cardiovascular imaging* **28**, 405–414 (2012).
96. Marcos-Alberca, P. *et al.* Clinical outcomes of patients with intramyocardial bridging diagnosed by multi-detector cardiac computed tomography. *Int J Cardiol* **148**, 123–125, <https://doi.org/10.1016/j.ijcard.2011.01.068> (2011).
97. Mohiddin, S. A., Begley, D., Shih, J. & Fananapazir, L. Myocardial bridging does not predict sudden death in children with hypertrophic cardiomyopathy but is associated with more severe cardiac disease. *Journal of the American College of Cardiology* **36**, 2270–2278 (2000).
98. Rha, S. *et al.* Association of myocardial bridge and acetylcholine induced coronary artery spasm and 12-months clinical outcomes. *Eur Heart J* **33**, 792–793 (2012).
99. Rubinshtein, R. *et al.* Long-term prognosis and outcome in patients with a chest pain syndrome and myocardial bridging: a 64-slice coronary computed tomography angiography study. *European Heart Journal-Cardiovascular Imaging*, jet010 (2013).
100. Schwarz, E. R. *et al.* Myocardial bridging in absence of coronary artery disease: proposal of a new classification based on clinical-angiographic data and long-term follow-up. *Cardiology* **112**, 13–21 (2008).
101. Sheu, M.-H. *et al.* Myocardial bridging in Taiwanese: Noninvasive assessment by 64-detector row coronary computed tomographic angiography. *Journal of the Chinese Medical Association* **74**, 164–168 (2011).

102. Wang, M.-H. *et al.* Myocardial bridging detection by non-invasive multislice spiral computed tomography: comparison with intravascular ultrasound. *Chinese medical journal* **121**, 17–21 (2008).
103. Xiang, D.-C., Gong, Z.-H., He, J.-X., Ruan, Y.-J. & Xie, Z.-H. Characteristics of stress tests and symptoms in patients with myocardial bridge and coronary artery spasm. *Coronary artery disease* **20**, 27–31 (2009).
104. Yan, H.-b *et al.* Frequency of infarct-related artery with myocardial bridging in patients with ST-elevation myocardial infarction and its impact upon percutaneous coronary intervention. *Chinese medical journal* **119**, 539–543 (2006).

Acknowledgements

This research did not receive any specific grant from funding agencies in the public, commercial, or not-for-profit sectors.

Author Contributions

S.H. and I.N. done the statistical analysis, M.C.R. and M.H. performed the database research, R.I.N. reviewed the conflicts in the databases obtained by M.C.R. and M.S.H. wrote the first draft of the manuscript; M.C.R., M.H., R.I.N., I.N. reviewed the manuscript critically for contents. S.H., M.C.R., M.H., R.I.N., I.N. agreed to the final version of the manuscript.

Additional Information

Competing Interests: The authors declare that they have no competing interests.

Publisher's note: Springer Nature remains neutral with regard to jurisdictional claims in published maps and institutional affiliations.



Open Access This article is licensed under a Creative Commons Attribution 4.0 International License, which permits use, sharing, adaptation, distribution and reproduction in any medium or format, as long as you give appropriate credit to the original author(s) and the source, provide a link to the Creative Commons license, and indicate if changes were made. The images or other third party material in this article are included in the article's Creative Commons license, unless indicated otherwise in a credit line to the material. If material is not included in the article's Creative Commons license and your intended use is not permitted by statutory regulation or exceeds the permitted use, you will need to obtain permission directly from the copyright holder. To view a copy of this license, visit <http://creativecommons.org/licenses/by/4.0/>.

© The Author(s) 2017