



Decision-Making Under Ambiguity or Risk in Individuals With Alzheimer's Disease and Mild Cognitive Impairment

Tingting Sun^{1,2}, Teng Xie^{1,2*}, Jing Wang^{1,2}, Long Zhang³, Yanghua Tian³, Kai Wang³, Xin Yu^{1,2} and Huali Wang^{1,2*}

¹ Dementia Care and Research Center, Peking University Institute of Mental Health (Sixth Hospital), Beijing Dementia Key Lab, Beijing, China, ² National Clinical Research Center for Mental Disorders, Key Laboratory for Mental Health, National Health Commission, Beijing, China, ³ Department of Neurology, The First Affiliated Hospital of Anhui Medical University, Hefei, China

OPEN ACCESS

Edited by:

Hyun Kook Lim,
The Catholic University of Korea,
South Korea

Reviewed by:

Maxime Montembeault,
University of California at San
Francisco, United States
Sang Joon Son,
Ajou University, South Korea

*Correspondence:

Teng Xie
xieteng@gmail.com
Huali Wang
huali_wang@bjmu.edu.cn

Specialty section:

This article was submitted to
Aging Psychiatry,
a section of the journal
Frontiers in Psychiatry

Received: 04 May 2019

Accepted: 05 March 2020

Published: 18 March 2020

Citation:

Sun T, Xie T, Wang J, Zhang L, Tian Y,
Wang K, Yu X and Wang H (2020)
Decision-Making Under Ambiguity
or Risk in Individuals With
Alzheimer's Disease and
Mild Cognitive Impairment.
Front. Psychiatry 11:218.
doi: 10.3389/fpsy.2020.00218

Background: Making advantageous decisions is essential in everyday life. Our objective was to assess how patients with mild cognitive impairment (MCI) and Alzheimer's disease (AD) make decisions under conditions of ambiguity or risk. In addition, the study also aimed to examine the relationship between decision-making competence and memory and executive function.

Methods: Patients with MCI ($n = 36$) and AD ($n = 29$) and healthy elderly controls (HC, $n = 34$) were recruited from the memory clinic. All subjects were administered a comprehensive neuropsychological battery test. We used the Iowa Gambling Task (IGT) to measure decision-making under ambiguity and the Game of Dice Task (GDT) to measure decision-making under risk. Pearson's correlation was used to examine the relationship between the performance of IGT and GDT with delayed recall and the Stroop test.

Results: In the GDT, MCI and AD patients presented similar performance but showed different patterns when compared with the HC group. The proportion of those making advantageous choices was lower in the AD group than in the HC group ($p = 0.01$), while the MCI and HC groups did not differ ($p = 0.14$). Meanwhile, concerning the ratio of accepting negative feedback, the AD ($p < 0.01$) group was significantly different from the HC patients, but the MCI ($p = 0.06$) and HC groups did not differ. In the IGT, MCI and AD patients selected randomly from advantageous and disadvantageous decks ($p = 0.94$ and $p = 0.54$), showing no significant change in performance over time. In contrast, the HC group made increasingly frequent advantageous selections over time ($p = 0.04$). Furthermore, the proportion of advantageous decision-makers for the GDT had a linear relationship with delayed recall of the Hopkins Verbal Learning Test and Stroop color words ($p < 0.01$ and $p < 0.01$, respectively).

Conclusion: Our findings suggest that decision-making ability under ambiguity is compromised in MCI and AD, and the decision-making under risk is only impaired in AD. Reduced decision-making performance under risk is closely correlated with lower executive functions and memory.

Keywords: decision-making, Alzheimer's disease, mild cognitive impairment, executive function, memory

INTRODUCTION

Alzheimer's disease (AD) is the most common cause of dementia symptoms and involves a progressive decline in many cognitive domains, such as memory, attention, and executive functions (1). Mild cognitive impairment (MCI) is described as a transitional period between normal aging and the diagnosis of clinically probable very early AD, and it involves memory impairment and slight cognitive deficits beyond those expected for age (2, 3).

The impairment of these functions may affect the abilities of patients with AD and MCI, such as decision-making. Several studies have shown that impaired memory, attention, and executive functions most likely compromise decision-making (4–6). Making decisions is essential for these two types of clinical patients in terms of domains of daily life including medical care (choosing between different treatment options), financial issues, and anticipating or planning possible nursing home placement. A study showed that older adults who make fewer advantageous decisions in laboratory decision-making tasks are more vulnerable to being deceived by misleading advertisements than older adults who are good at decision-making (7). In real life and laboratory investigations, there are two general types of decision-making situations: decisions under uncertainty and decisions under risk. Several studies have found that some healthy older adults present difficulties in making advantageous decisions, especially when information about the options is ambiguous, missing, or misleading (8–10). When a situation is complex, people need to learn from experience which options are best for them in the long term (5). The poor ability to learn from experience over time, resulting from compromised executive function (11, 12) and other neuropsychological abilities (5), may account for decision-making difficulties in normal elderly (9). AD and MCI patients, who have more cognitive impairment compared with healthy controls, may have severe difficulties in decision-making under different situations.

Recent research has shown that patients with MCI perform worse than healthy peers in decision-making tasks under risk (13, 14). In this situation, explicit information about the possible results of various options and their associated probabilities is provided, and participants can depend on their own strategy patterns by calculating or estimating (6). Difficulties also emerge in decision-making in situations of ambiguity (14–17). AD patients are also found to show poorer performance than healthy controls in decision-making under risk (8) and ambiguity (15–18), but they do not differ from MCI patients under risk (19) and ambiguity (15–17). However, one study reported a relatively intact decision-making ability of mild AD patients under risk (20). Previous studies have inconsistent results about decision-making in MCI and AD patients. Meanwhile, these studies either studied decision-making just in one group of MCI and AD patients compared with healthy controls or two groups just under one decision-making condition. A recent study provided compelling evidence that low decision-making ability is an early harbinger of adverse cognitive outcomes and a manifestation of accumulating AD pathology in the brain (21). Furthermore, the ability of decision-

making in different conditions among individuals with MCI and AD needs further investigation.

Previous studies found the decision-making under risk might be related with executive function (22–24) rather than working memory (22). However, the role of executive function and working memory in decision-making under ambiguity remains unclear (25, 26). There have been controversies on how memory and explicit recall might impact decision-making (27–29). Concerning MCI and AD, previous studies found a positive relationship between executive function and decision making under risk (17, 19). However, Bayard et al. did not observe significant relationship between working memory, executive functions and decision-making under ambiguity (15), while studies by Zamarian and colleagues did in MCI and mild AD (30, 31). Therefore, decision making under risk or ambiguity might have diverse relationship with cognitive functions in MCI and AD. All in all, further studies are needed to understand how neurocognitive functions interact with making advantageous decisions in different situations in AD and MCI patients. It is anticipated the findings would trigger specific strategies that help people with cognitive disorders make a favorable decision in daily life.

To the best of our knowledge, this study is the first to compare the decision-making performance of older adults with MCI and AD in both risky and ambiguous conditions. Because of slighter cognitive deficits in MCI patients than in AD patients, patients with MCI may not show difficulties in decision-making under risk but may perform worse in decision-making under ambiguity. It may be hypothesized that decision-making performance for individuals with MCI under risk is better than that of individuals with AD, but in conditions under ambiguity, the performance of patients with MCI is similar to that of patients with AD. Based on previous decision-making studies, decision-making under risky conditions is measured by the Game of Dice Task [GDT, (22)], and under ambiguous conditions, decision-making is commonly evaluated using the Iowa Gambling Task [IGT, (32)]. In this study, we aimed to investigate the aforementioned hypothesis by comparing the performance of MCI and AD patients with that of healthy controls in two gambling games. Meanwhile, we intended to explore the potential relationship between the decision-making competence and memory and executive function in AD and MCI patients.

METHODS

Participants

From May to November 2018, 36 patients with MCI and 29 patients with AD were recruited from the case registry of the Dementia Care & Research Center of Peking University Institute of Mental Health. The case registry has been described in a previous study (33). Briefly, the participants completed a standardized neuropsychological assessment, underwent clinical interviews and brain imaging examinations, and received a clinical diagnosis by a memory specialist.

All participants with MCI met Petersen's MCI criteria as follows: (a) memory problems confirmed by an informant, (b) preserved general cognitive function (minimal state examination (MMSE) score of > 24), (c) intact activities of daily living (an ADL score of ≤ 26), and (d) failure to meet the diagnosis of dementia (34). Other inclusion criteria were as follows: (a) age ≥ 55 years, (b) schooling education (≥ 5 years), (c) a Clinical Dementia Rating (CDR) score = 0.5 and (d) a Hamilton Depression Scale (HAMD) score of < 12 . The exclusion criteria of MCI were as follows: Axis I psychiatric disorders listed in the Diagnostic and Statistical Manual of Mental Disorders 4th edition (DSM-IV); history of stroke, subdural hematoma, tumor, other intracranial space-occupying diseases or cerebrovascular disorders, and presence of significant risk factors for cerebrovascular disorders (i.e., a score higher than 4 on the modified Hachinski Ischemia Scale); current or previous neuropsychiatric diseases such as Parkinson's disease, epilepsy; and presence of a physical illness that could affect cognition.

A clinical diagnosis of AD was made according to the criteria for dementia cited in the International Classification of Diseases, 10th Revision (34). Other inclusion criteria were as follows: more than 6 months' duration of the disease and an MMSE score of 15–24 [for more details, see (35)].

Thirty-four participants met the inclusion criteria of healthy controls. They underwent the neuropsychological assessments and CDR to exclude cognitive impairment. Healthy controls met criteria as follows: (a) age ≥ 55 years; (b) with more than 5 years of schooling education; (c) with preserved general cognitive function [MMSE score of > 24 and Montreal Cognitive Assessment (MoCA) score of > 26]; (d) a CDR score = 0; and (e) a HAMD score of < 12 .

The present study was approved by the Ethics Committee of Peking University Institute of Mental Health (Sixth Hospital), Beijing, China. All participants were fully informed regarding the study protocol and provided written informed consent.

Neuropsychological Tests

All participants underwent a neuropsychological assessment. For the purpose of this study, we included the score of the MMSE, the MoCA, the Hopkins Verbal Learning Test (HVLT) and the Stroop color word tasks.

Decision-Making Under Risk

The GDT is often used to measure decision-making under risk conditions (22). Participants are asked to sit in front of a computer screen and watch the computer throwing dice and to choose among different alternatives that are explicitly related to a specific amount of gain/loss and that have distinct winning probabilities. Before each throw, they can choose a single number or a combination of two, three, or four numbers. If one of the numbers of the combination that they choose is thrown with the die, the participants receive the associated amount of money. In contrast, the subjects lose the same amount of money when none of the chosen numbers is thrown. In this task, subjects are asked to maximize the starting fund (1,000 *yuan*) within 18 throws. One single number with a winning probability of 1/6 and a combination

of two numbers with a winning probability of 2/6 are defined as disadvantageous or risky decisions, and a combination of three numbers and four numbers are defined as advantageous or nonrisky decisions. Selecting advantageous options leads to a positive outcome throughout the test, whereas selecting disadvantageous options leads to a negative outcome [for more details about the rules of GDT, see (36)].

We calculated the (a) final capital and (b) net score (the number of nonrisky options minus the number of risky options) and (c) utilization of negative feedback. If participants chose a disadvantageous option (one number or the combination of two numbers) and obtained a loss and then in the next trial immediately chose an advantageous choice, we identified this behavior as "using negative feedback." In contrast, if participants chose a disadvantageous option immediately after receiving a loss for a disadvantageous option, we defined this behavior as "not using negative feedback." The utilization of negative feedback is the frequency of choosing advantageous option after choosing a disadvantageous option divided by the frequency of using negative feedback; and (d) the frequency of choosing each of the four possible choices, making disadvantageous choices, and making advantageous choices.

Decision-Making Under Ambiguity

The IGT is used to measure decision-making under conditions of uncertainty (37). Participants must choose between four different decks (A, B, C, D). Card selections from decks A and B result in large monetary gains followed by large penalties at unpredictable times, leading to a negative balance. Therefore, we define decks A and B as disadvantageous choices. Decks C and D are advantageous choices because they lead to moderate gains but also to moderate or low losses, leading to a positive final balance. Participants attempt to solve the task successfully but are not told the rules for gains and losses [for more details about the rules of IGT, see (38)].

We calculated the following: (a) the net score, which was selected from decks C and D minus selections from decks A and B. One hundred choices were equally divided into five blocks. The calculation of the net score for each block was used to quantify the progressive change in the selection across the IGT; (b) the utilization of negative feedback: if participants chose a disadvantageous option (A and B) and obtained a loss and then, in the next trial, immediately chose an advantageous choice (C and D), we identified this behavior as "using negative feedback." If the opposite occurred, we defined the behavior as "not using negative feedback"; (c) the frequency of making four possible choices; (d) the frequency of advantageous and disadvantageous choices; (e) the advantageous profile: a positive net score $[(C+D) - (A+B) > 0]$ indicates more frequent selection from advantageous decks, whereas a negative net score $[(C+D) - (A+B) < 0]$ indicates more frequent selection from disadvantageous decks. We designed five blocks into two parts: the initial phase (trials 1–40; Blocks 1 and 2) and the second part of the IGT (trials 41–100; Blocks 3, 4, and 5). We defined the number of subjects whose net score on the second part was positive as an advantageous profile; and (f) the change ratio in frequency of choosing advantageous choices among Blocks 1–5; that is, the result is the frequency of making advantageous choices in

Block 1 subtracted from the frequency of making advantageous choices in each block, divided by the frequency of making advantageous choices in Block 1. For example, the result is the subtraction of the frequency of making advantageous choices in Block 1 from the frequency of making advantageous choices in Block 2, divided by the frequency of making advantageous choices in Block 1 ((B2-B1)/B1).

Statistical Analysis

All statistical analyses were conducted using the Statistical Package for the Social Sciences (SPSS) version 20.0 for Windows. The data were examined for normal distribution (tested with the Kolmogorov-Smirnov test) and homogeneity of variance (tested with the Levene test). The variables were normally distributed ($p > 0.05$).

Because the neuropsychological tests were associated with age and education, the neuropsychological testing data of the three groups were compared with these two demographic variables as covariates. An analysis of covariance (ANCOVA) with age and education as covariates and with the group as the between-subjects factor was performed to examine the measures of GDT and IGT. For the measures of IGT, we used an ANCOVA with age and education as covariates and with the group as the between-subjects factor for the variables (for all 100 trials) of IGT. For the score of the blocks, we conducted a repeated measures analysis of variance (ANOVA) with age and education as covariates and with block (1–5) as the within-subject factor and group (AD, MCI, controls) as the between-subjects factor for the frequency of advantageous choices and a repeated-measures ANOVA with age and education as covariates and for the advantageous choices of each group (AD, MCI, controls). Finally, relationships between the neuropsychological tests and performance on the gambling tasks were determined using Pearson product-moment correlations.

RESULTS

Demographic Characteristics

The AD and MCI participants were older (both $p < 0.01$) than the controls, but the AD and MCI participants did not differ in age. The AD group was less educated than the MCI group ($p < 0.01$) and the controls ($p < 0.01$), with no difference between the controls and the MCI participants. The groups were matched for sex (see **Table 1**).

Neuropsychological Tests

The AD participants performed worse than the MCI participants ($p < 0.001$) and controls ($p < 0.001$) on the MMSE. A significant difference was also observed between the MCI participants and controls ($p = 0.02$). The same situation was also found for MoCA in that the AD participants performed worse than the MCI participants ($p < 0.001$) and controls ($p < 0.001$), and the MCI participants and controls ($p < 0.001$) were found to be significantly different.

Poorer executive functions were found with the Stroop color word test (MCI vs. controls, $p < 0.001$; AD vs. controls, $p < 0.001$). Additionally, the AD group performed worse than the MCI group (all $p < 0.001$). With regard to the performance of memory function on the HVLTD Delayed Recall (HVLTD-DR), the AD ($p < 0.001$) and MCI ($p < 0.001$) groups were significantly different from the controls (see **Table 1**).

Decision-Making Under Risk

When controlling for age and education, between-group differences were observed for the final capital ($p < 0.001$). The AD and MCI groups were significantly lower than the controls ($p < 0.001$ and $p < 0.01$, respectively), with no difference between the AD and MCI groups ($p = 0.10$) in the final capital.

An ANCOVA with age and education as covariates and with group as the between-subjects factor was performed to examine the utilization of negative feedback ($F = 5.08$, $p = 0.008$, $\eta^2 = 0.10$). The AD patients showed a lower utilization of negative feedback than the controls ($p < 0.01$), but the MCI group did not differ from the controls ($p = 0.14$).

When controlling for age and education, between-group differences were observed for the frequency of advantageous choices ($p = 0.04$) and the frequency of single numbers (the most disadvantageous choice) ($p < 0.001$). The AD patients showed a lower preference for advantageous options than the controls ($p = 0.01$), but individuals with MCI showed no difference from the AD group or controls (**Figure 1**). In addition, individuals with AD ($p < 0.01$) and MCI ($p < 0.001$) selected more single number options than the controls (**Figure 2**). For the other three options, there was no difference among the three groups (see **Table 2**).

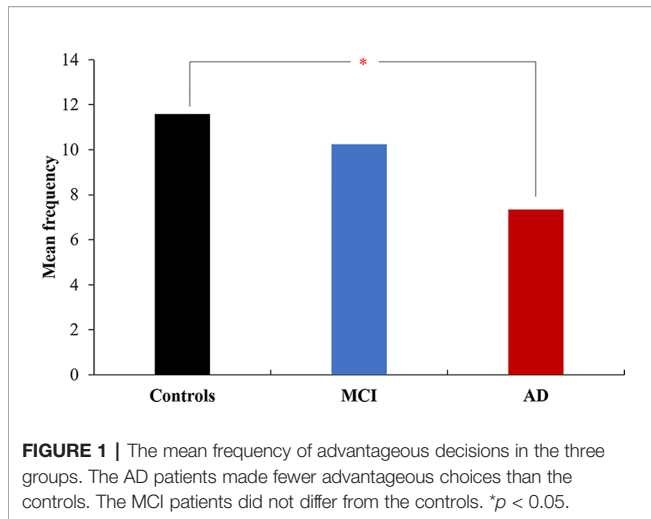
Decision-Making Under Ambiguity

Based on the adjusted ANCOVA analysis for the IGT total net score, the three groups did not differ. A repeated-measures ANOVA, with block as the within-subject factor and group

TABLE 1 | Demographic and cognitive performance in three groups.

	AD (N = 29)	MCI (N = 36)	Control (N = 34)	F/ χ^2	p
Age	75.1 (7.92)*	76.9 (7.27)*	65.1 (6.82)	25.86	<0.001
Sex (men/women)	11/19	11/25	15/19	1.38	0.502
Education	11.5 (3.57)*	13.8 (3.03)	13.6 (2.79)	5.26	0.007
MMSE	20.0 (4.76)*#	26.6 (2.41)*	29.3 (2.54)	41.97	<0.001
MoCA	13.8 (4.70)*#	22.3 (3.38)*	26.6 (2.02)	72.33	<0.001
StroopCW	18.8 (8.77)*#	29.3 (10.83)*	38.5 (9.81)	15.11	<0.001

MMSE, *minimental state examination*; MoCA, *Montreal Cognitive Assessment*, HVLTD-DR, *Hopkins Verbal Learning Test Delayed Recall*; StroopCW, *Stroop color word tasks*.
*vs. controls $p < 0.05$, #MCI vs. AD $p < 0.05$.



(AD, MCI, controls) as the between-subjects factor was conducted on the frequency of four choices (A, B, C, D). The results showed that there was no significant effect of block and group on the frequency of three choices (A, C, D). The

interactions between block and group on the frequency of choice A ($p = 0.01$) and choice D ($p = 0.02$) were significant. For choice B, the main effect of group ($p = 0.02$) as well as the interaction between block and group ($p = 0.01$) were significant. Overall, the AD patients showed significant differences compared to the healthy controls (*post hoc* contrasts $p < 0.001$), whereas the MCI patients and controls did not differ from each other in the frequency of choice B.

A repeated-measures ANOVA (adjusted with age and education) with block (Blocks 1–5) as the within-subject factor and group (AD, MCI, and controls) as the between-subjects factor was conducted on the change ratio of the frequency about advantageous choices. The results showed that there was a significant effect group on the change ratio in frequency of advantageous choices ($p = 0.03$), and AD patients showed significant differences from MCI patients (*post hoc* contrasts $p < 0.01$). The interaction between block and group on advantageous choices ($p < 0.01$) was significant.

A repeated-measures ANOVA for the change ratio among Blocks 1–5 of each group (AD, MCI, and controls), adjusted with age and education, found that the controls selected more advantageous choices over time (block effect $p = 0.04$), whereas

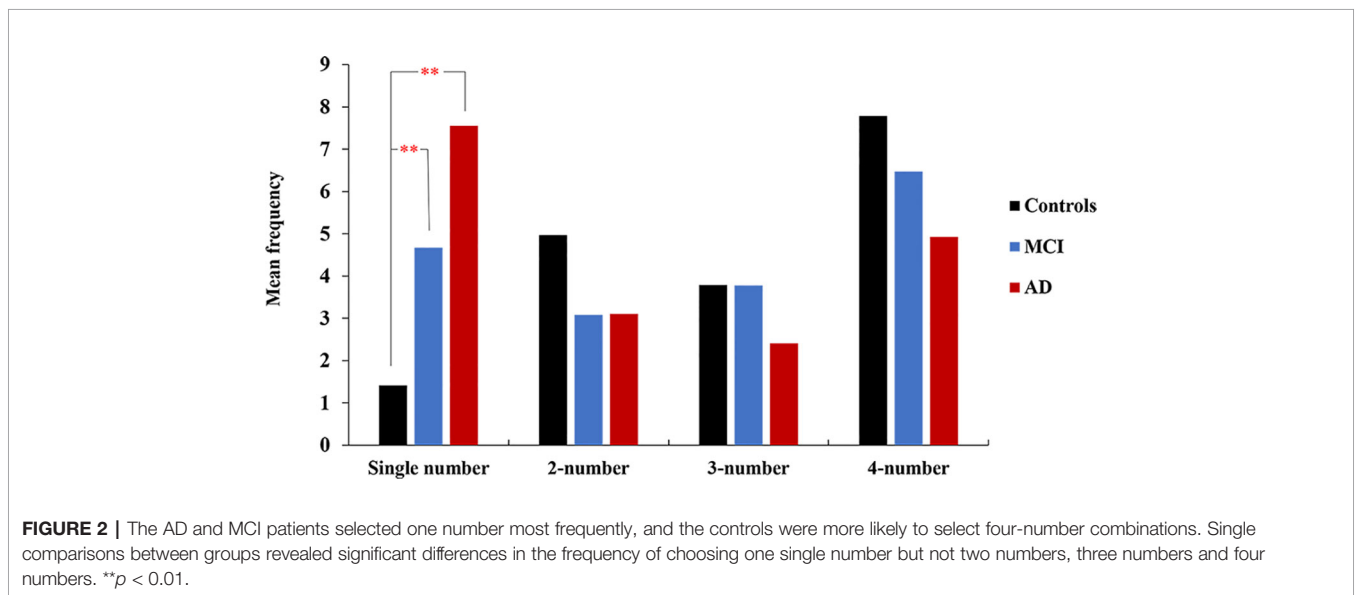


TABLE 2 | The comparison of the performance on the Game of Dice Test (GDT) in three groups [mean (SD)].

	AD (N = 29)	MCI (N = 36)	Control (N = 34)	F/ χ^2	p
Net score	-3.3 (9.11)*	2.5 (9.45)	5.2 (13.65)	3.43	<0.05
Final capital	-4,113.8 (3,342.45)**	2,094.4 (3,465.25)**	23.5 (2,726.64)	9.74	<0.001
Feedback (%)	0.4 (0.25)*	0.6 (0.28)	0.7 (0.38)	5.08	<0.01
Single number	7.6 (4.96)**	4.7 (4.22)**	1.4 (3.52)	10.53	<0.01
2-number	3.1 (2.41)	3.1 (2.22)	5 (5.91)	0.89	0.414
3-number	2.4 (1.8)	3.8 (2.72)	3.8 (4.56)	0.67	0.515
4-number	4.9 (4.1)	6.5 (5.20)	7.8 (7.2)	1.95	0.148
Advantageous choices, n (%)	10.7 (60)*	7.8 (40)	6.4 (40)	3.43	<0.05
Disadvantageous choices, n (%)	7.3 (40)*	10.3 (60)	11.6 (60)	3.43	<0.05
A/D ratio	1.4 (2.08)**	2.5 (3.40)*	4.7 (6.02)	5.38	<0.01

A/D, Frequency of making advantageous choices/Frequency of making disadvantageous choices.

*vs. controls $p < 0.05$, **vs. controls $p < 0.05$.

the MCI ($p = 0.94$) did not differ and AD ($p = 0.54$) made advantageous choices more randomly over the task (Figure 3).

Based on an adjusted ANCOVA analysis for the frequency of advantageous choices and the ratio of advantageous choices to disadvantageous choices, there was no difference among the three groups. A statistically nonsignificant trend was observed for the advantageous profile.

Correlations Between Decision-Making Competence and Cognitive Performance

The GDT variables, including final capital, net score, utilization of negative feedback, frequency of a single-number choice and frequency of advantageous choices, correlated significantly with neuropsychological performance (Stroop color word test, HVLTD-DR) (see Table 3). However, when education was adjusted, there was no significant correlation between the GDT variables and neuropsychological performance (all $p > 0.05$). We did not observe a significant correlation between the IGT variables and neuropsychological performance.

DISCUSSION

The present study investigated decision-making in patients with AD and MCI in two gambling tasks under risk or ambiguity. We assessed many measures of the GDT and IGT, as stated in the

methods. In the GDT, the AD patients utilized less negative feedback and chose more disadvantageous options than the healthy controls. This finding indicates that AD patients learn very little from information over time and prefer to choose unfavorable options. However, the MCI patients did not differ from the healthy controls. In the IGT, with regard to performance changes over the task, the healthy controls had a stronger tendency toward safe and advantageous responses than the AD and MCI patients. While the healthy controls demonstrated learning as the task proceeded, the AD and MCI patients did not adapt their strategies. In this task, the profile of decision-making for the MCI patients resembled that of the AD patients.

In the GDT, the AD patients chose more risky options than the healthy controls. This result is inconsistent with the finding by Delazer et al. that patients with mild AD chose safe alternatives as frequently as healthy elderly persons (20). It might be partly due to the heterogeneity of the illness. An earlier study found that subjects with worse emotional control abilities chose more risky options (23). People with AD may present impairment in emotional control (23, 39) and executive function (5) in addition to memory decline. However, the results of this study that people with AD chose more risky options than healthy controls are in line with previous investigations (31, 40). Recent investigations have credited the important role of executive functions and numerical processing in decision-

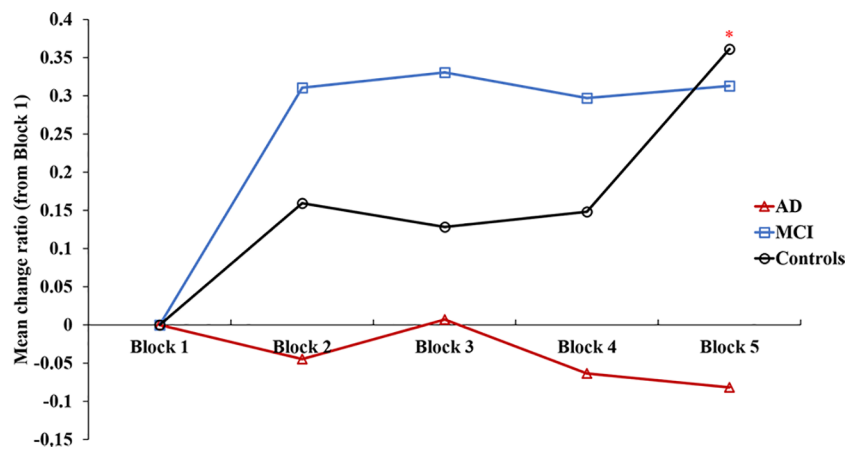


FIGURE 3 | The change ratio of making advantage choices in an Iowa gambling task for 1-5 blocks. Controls selected more advantageous choices over time, whereas the MCI did not differ, and AD chose advantageous choices more randomly over the task. *vs Block 2, Block 3, Block 4 $p < 0.05$.

TABLE 3 | Correlations of the performance of gambling dice test with the executive function and memory test.

	Final capital	Net score	Utilization of negative feedback	Single number	Advantageous choices	A/D ratio
Age	-0.152	-0.052	-0.041	0.253*	0.052	0.047
Education	0.321**	0.277**	0.247*	-0.312**	-0.277**	0.287**
StroopCW	0.418**	0.296**	0.346**	-0.477**	-0.296**	0.168
HVLT-DR	0.437**	0.358**	0.355**	-0.555**	-0.358**	0.252*

A/D, Frequency of making advantageous choices/Frequency of making disadvantageous choices; StroopCW, Stroop color word tasks; HVLT-DR, Hopkins Verbal Learning Test Delayed Recall. * $p < 0.05$, ** $p < 0.01$

making under risk (5, 6, 22, 36, 41), as the prefrontal cortex is involved in both processes (5, 42). Additionally, executive function and numerical training improved their performance in decision-making under risk (43). Therefore, the presence of executive function and numerical processing impairments in AD patients may be the main cause of poor performance in the GDT.

The MCI patients showed no significant difference from the controls and AD patients. This result is inconsistent with previous studies of decision-making under risk in patients with MCI. In two previous studies, MCI patients performed worse than healthy controls (14, 19). Compared with these two previous studies, although this study examined the decision-making ability of MCI patients under risk, this study used different gambling games. The GDT used in this study may not be as sensitive as the tasks in previous studies, or the MCI of patients in this study may have been more severe than in previous studies. These two reasons may be the main cause of this situation.

In the IGT, the AD and MCI patients showed significant differences from the healthy controls. The AD and MCI patients made random decisions and showed poor strategy stability. In contrast to the two groups of clinical patients, the healthy controls made increasingly frequent advantageous selections over time. This finding suggests that the healthy controls assessed the advantageous decks more favorably than the disadvantageous decks and learned to decide advantageously by utilizing feedback and modifying their strategy over time, but the patients with AD and MCI did not. The response patterns of the two groups of clinical patients may be attributed to deficits in memory and executive function, which prevents them from establishing new stimulus-reward relationships and eliminating previously learned responses due to the parietal and temporal atrophy they present (44). Another possible explanation of these results is a dysfunctional ventromedial prefrontal cortex (VMPC) in patients with AD (45–47) and MCI (48). The VMPC is supposed to mediate the use of feedback for current decisions (49). The somatic marker hypothesis was based on the defective decision-making about VMPC damage, which suggested that decision-making is often assisted by emotional processes and somatic “markers” (49, 50). However, little study about the relationship between decision-making damage and VMPC in AD and MCI patients was found. In the future, more confirmatory studies are needed to eliminate even the most resilient skepticism in this regard.

These results verify earlier reports that in MCI patients, the performance of decision-making under ambiguity mimicked that of AD patients and was impaired compared with that of healthy controls (14, 15, 17). The MCI patients manifest slight impairments in cognitive functions, which do not meet the criteria for a diagnosis of dementia (2, 3), and less VPMC atrophy than AD patients (51). In addition, a study found that lower executive functions are required to make advantageous decisions in situations of risk than in situations of ambiguity (19). Therefore, the lower cognitive impairments and relatively intact VMPC function of MCI patients in comparison with those of AD patients may be the reason for this study’s finding that persons with MCI show no difficulties in making advantageous decisions under risk but have difficulties in situations of

ambiguity. We can infer that MCI patients may still have intact competence when making decisions under conditions of risk but show impairment in decision-making under ambiguity.

The observation that individuals with MCI and AD did not differ in IGT is similar to previous studies (15, 17, 52). It may indicate that people with MCI and AD have similar disadvantageous decision-making profile in the IGT. However, in our study the MCI subjects exhibited more positive changes from baseline up to the Block 4 task in IGT test compared with control group. It may imply that MCI individuals preserve part neuroplasticity in learning. With repeated trials, individuals with MCI might learn from the feedback over time and make more advantageous choices. Further investigations are warranted to explore the potential mechanism.

In this study, we implemented a correlation analysis to explore the possible contribution of memory and executive functions to decision-making performance. The results indicated that the capacity to utilize feedback in the decision-making under risk was associated with good executive ability and good memory. Executive functions contribute to decision-making under risk by guiding the categorization of information and alternatives, the development and application of strategies and the integration of feedback (5, 19). People usually depend on declarative memory to form and update a long-term representation that integrates the variations in reward and punishments across decks and across experiences during the process of decision-making (29). Without such relational record, an individual has no choice but to rely on the immediately available information and thus, the decision sticking to a certain deck or switching to another deck relies on each single outcome (29). Therefore, intact episodic memory is important for making good decisions (14). The memory deficit in conditions, such as AD and MCI, could trigger the impairment on decision-making (28, 29).

We identify two possible limitations of our study. First, the experimental methods we used may not reflect the actual deficits in decision-making. A study showed that older adults who make fewer advantageous decisions in laboratory decision-making tasks are more vulnerable to being deceived by misleading advertisements (7). Therefore, it would be interesting to validate our findings with real-world decision-making tasks. Second, we observed the great variation in performance on IGT and GDT in three groups. It might be partly attributed to not only the sample size but also the potential neuropathological heterogeneity of the subjects.

In conclusion, to our knowledge, we present the first study that shows that individuals with MCI do not make exactly the same decisions as individuals with AD under conditions of ambiguity and risk. This study finds that AD patients have difficulty making advantageous decisions under ambiguity and risk; however, MCI patients have problems making advantageous decisions under ambiguity but not under risk. We also document the relationship between the decision-making measures under risk and cognitive performance. The capacity tested by GDT and IGT may be considered as the analogue of real-world decision-making, which is essential for care planning and financial arrangement in one’s daily living (20, 53, 54). Therefore, our study highlights the significance of measuring the decision making under ambiguity for early detection of MCI. In the

future, more real-life decision-making needs to be performed in patients with MCI and AD, and more longitudinal studies should be conducted to verify that low decision-making ability is associated with increased risk for incident AD and MCI.

DATA AVAILABILITY STATEMENT

The datasets generated and analyzed during the current study are not publicly available because we are preparing an additional manuscript. However, they are available upon reasonable request to the corresponding authors, TX (xieteng@gmail.com) and HW (huali_wang@bjmu.edu.cn).

ETHICS STATEMENT

This study was carried out in accordance with the recommendations of the Institutional Review Board of Peking University Sixth Hospital with written informed consent from all subjects. All subjects gave written informed consent in accordance with the Declaration of Helsinki. The protocol was approved by the Institutional Review Board of Peking University Sixth Hospital.

REFERENCES

1. Khachaturian ZS. Revised criteria for diagnosis of Alzheimer's disease: National Institute on Aging-Alzheimer's Association diagnostic guidelines for Alzheimer's disease. *Alzheimer's Dement* (2011) 7(3):253–6. doi: 10.1016/j.jalz.2011.04.003
2. Albert MS, DeKosky ST, Dickson D, Dubois B, Feldman HH, Fox NC, et al. The diagnosis of mild cognitive impairment due to Alzheimer's disease: Recommendations from the National Institute on Aging-Alzheimer's Association workgroups on diagnostic guidelines for Alzheimer's disease. *Alzheimer's Dement* (2011) 7(3):270–9. doi: 10.1016/j.jalz.2011.03.008
3. Petersen RC. Mild cognitive impairment as a diagnostic entity. *J Internal Med* (2004) 256(3):183–94. doi: 10.1111/j.1365-2796.2004.01388.x
4. Brand M, Franke-Sievert C, Jacoby GE, Markowitsch HJ, Tuschen-Caffier B. Neuropsychological correlates of decision making in patients with bulimia nervosa. *Neuropsychology* (2007) 21:742–50. doi: 10.1037/0894-4105.21.6.742
5. Brand M, Labudda K, Markowitsch HJ. Neuropsychological correlates of decision-making in ambiguous and risky situations. *Neural Networks* (2006) 19:1266–76. doi: 10.1016/j.neunet.2006.03.001
6. Schiebener J, Brand M. Decision Making Under Objective Risk Conditions—a Review of Cognitive and Emotional Correlates, Strategies, Feedback Processing, and External Influences. *Neuropsychol Rev* (2015) 25(2):171–98. doi: 10.1007/s11065-015-9285-x
7. Denburg NL, Cole CA, Hernandez M, Yamada TH, Tranel D, Bechara A, et al. The Orbitofrontal Cortex, Real-World Decision Making, and Normal Aging. *Ann N Y Acad Sci* (2007) 1121:480–98. doi: 10.1196/annals.1401.031
8. Zamarian L, Sinz H, Bonatti E, Gamboz N, Delazer M. Normal Aging Affects Decisions Under Ambiguity, but Not Decisions Under Risk. *Neuropsychology* (2008) 22:645–57. doi: 10.1037/0894-4105.22.5.645
9. Brand M, Markowitsch HJ. Aging and decision-making: A neurocognitive perspective. *Gerontology* (2010) 56:319–24. doi: 10.1159/000248829
10. Fein G, McGillivray S, Finn P. Older adults make less advantageous decisions than younger adults: Cognitive and psychological correlates. *J Int Neuropsychol Soc* (2007) 13(3):480–9. doi: 10.1017/S1355617707052X
11. Brand M, Recknor EC, Grabenhorst F, Bechara A. Decisions under ambiguity and decisions under risk: Correlations with executive functions and comparisons of two different gambling tasks with implicit and explicit

AUTHOR CONTRIBUTIONS

TS, TX, JW, XY, and HW conceived the study and supervised the work. TS, JW, and HW designed the study and collected the data. TS, TX, LZ, YT, and KW analyzed the data. TS and TX wrote the manuscript. All authors contributed to the subsequent drafts and approved the final version.

FUNDING

This work was supported by the National Research and Development Grant from the Ministry of Science and Technology (2017YFC1311100, 2018YFC1314200) and Beijing Municipal Science and Technology Commission (Z161100000516001).

ACKNOWLEDGMENTS

We thank Meiling Tan, Masami Fukuda, Zhiyu Sun, Lujie Xu for their assistance in subject recruitment and administering the test. The authors thank all research participants for the time and effort they dedicated to the study.

- rules. *J Clin Exp Neuropsychol* (2007) 29(1):86–99. doi: 10.1080/13803390500507196
12. Brand M, Heinze K, Labudda K, Markowitsch HJ. The role of strategies in deciding advantageously in ambiguous and risky situations. *Cogn Process* (2008) 9(3):159–73. doi: 10.1007/s10339-008-0204-4
13. Bonatti E, Kuchukhidze G, Zamarian L, Trinka E, Bodner T, Benke T, et al. Decision making in ambiguous and risky situations after unilateral temporal lobe epilepsy surgery. *Epilepsy Behav* (2009) 14:665–73. doi: 10.1016/j.yebeh.2009.02.015
14. Zamarian L, Delazer M, Weiss EM. The Impact of Mild Cognitive Impairment on Decision Making in Two Gambling Tasks. *J Gerontol* (2010) 66B:23–31. doi: 10.1093/geronb/gbq067
15. Bayard S, Jacus J-P, Raffard S, Gely-Nargeot M-C. Apathy and Emotion-Based Decision-Making in Amnesic Mild Cognitive Impairment and Alzheimer's Disease. *Behav Neurol* (2014) 2014:1–7. doi: 10.1155/2014/231469
16. Bayard S, Jacus J-P, Raffard S, Gely-Nargeot M-C. Conscious Knowledge and Decision Making Under Ambiguity in Mild Cognitive Impairment and Alzheimer Disease. *Alzheimer Dis Assoc Disord* (2015) 29:357–9. doi: 10.1097/WAD.0000000000000061
17. Jacus JP, Gely-Nargeot MC, Bayard S. Ecological relevance of the Iowa gambling task in patients with Alzheimer's disease and mild cognitive impairment. *Rev Neurologique* (2018) 174:327–36. doi: 10.1016/j.neurol.2017.08.003
18. Torralva T, Dorrego F, Sabe L, Chmerinski E, Starkstein SE. Impairments of Social Cognition and Decision Making in Alzheimer's Disease. *Int Psychogeriatr* (2000) 12:359–68. doi: 10.1017/S1041610200006463
19. Pertl M-T, Benke T, Zamarian L, Delazer M. Decision Making and Ratio Processing in Patients with Mild Cognitive Impairment. *J Alzheimer's Dis* (2015) 48:765–79. doi: 10.3233/JAD-150291
20. Delazer M, Sinz H, Zamarian L, Benke T. Decision-making with explicit and stable rules in mild Alzheimer's disease. *Neuropsychologia* (2007) 45(8):1632–41. doi: 10.1016/j.neuropsychologia.2007.01.006
21. Boyle PA, Yu L, Schneider JA, Wilson RS, Bennett DA. Scam Awareness Related to Incident Alzheimer Dementia and Mild Cognitive Impairment. *Ann Internal Med* (2019) 170(10):702–9. doi: 10.7326/M18-2711
22. Brand M, Fujiwara E, Borsutzky S, Kalbe E, Kessler J, Markowitsch HJ. Decision-making deficits of Korsakoff patients in a new gambling task with

- explicit rules: Associations with executive functions. *Neuropsychology* (2005) 19(3):267–77. doi: 10.1037/0894-4105.19.3.267
23. Brand M, Kalbe E, Labudda K, Fujiwara E, Kessler J, Markowitsch HJ. Decision-making impairments in patients with pathological gambling. *Psychiatry Res* (2005) 133(1):91–9. doi: 10.1016/j.psychres.2004.10.003
 24. Brand M, Labudda K, Kalbe E, Hilker R, Emmans D, Fuchs G, et al. Decision-making impairments in patients with Parkinson's disease. *Behav Neurol* (2004) 15(3–4):77–85. doi: 10.1155/2004/578354
 25. Bechara A, Martin EM. Impaired Decision Making Related to Working Memory Deficits in Individuals with Substance Addictions. *Neuropsychology* (2004). 18(1):152–62. doi: 10.1037/0894-4105.18.1.152
 26. Bechara A, Damasio H, Tranel D, Anderson SW. Dissociation of working memory from decision making within the human prefrontal cortex. *J Neurosci* (1998) 18(1):428–37. doi: 10.1523/jneurosci.18-01-00428.1998
 27. Turnbull OH, Evans CEY. Preserved complex emotion-based learning in amnesia. *Neuropsychologia* (2006) 44(2):300–6. doi: 10.1016/j.neuropsychologia.2005.04.019
 28. Gutbrod K, Kroužel C, Hofer H, Müri R, Perrig W, Ptak R. Decision-making in amnesia: Do advantageous decisions require conscious knowledge of previous behavioural choices? *Neuropsychologia* (2006) 44(8):1315–24. doi: 10.1016/j.neuropsychologia.2006.01.014
 29. Gupta R, Duff MC, Denburg NL, Cohen NJ, Bechara A, Tranel D. Declarative memory is critical for sustained advantageous complex decision-making. *Neuropsychologia* (2009) 47(7):1686–93. doi: 10.1016/j.neuropsychologia.2009.02.007
 30. Zamarian L, Weiss EM, Delazer M. The impact of mild cognitive impairment on decision making in two gambling tasks. *J Gerontol: Ser B psychol Sci Soc Sci* (2011) 66 B:23–31. doi: 10.1093/geronb/gbq067
 31. Sinz H, Zamarian L, Benke T, Wenning GK, Delazer M. Impact of ambiguity and risk on decision making in mild Alzheimer's disease. *Neuropsychologia* (2008) 46(7):2043–55. doi: 10.1016/j.neuropsychologia.2008.02.002
 32. Bechara A, Damasio AR, Damasio H, Anderson SW. Insensitivity to future consequences following damage to human prefrontal cortex. *Cognition* (1994) 50(1–3):7–15. doi: 10.1016/0010-0277(94)90018-3
 33. Wang X, Wang H, Li H, Li T, Yu X. Frequency of the apolipoprotein e 4 allele in a memory clinic cohort in Beijing: A naturalistic descriptive study. *PLoS One* (2014) 9(6):e99130. doi: 10.1371/journal.pone.0099130
 34. World Health Organization. *The ICD-10 Classification of Mental and Behavioural Disorders. Clinical description and diagnostic guidelines*. Geneva: World Health Organization (1992).
 35. Wang J, Fang Y, Wang X, Yang H, Yu X, Wang H. Enhanced gamma activity and cross-frequency interaction of resting-state electroencephalographic oscillations in patients with Alzheimer's disease. *Front Aging Neurosci* (2017) 9:243. doi: 10.3389/fnagi.2017.00243
 36. Lv X, Han Y, Wang K, Ma H, Zhang F, Yu F, et al. Decision-making impairments in patients with Wilson's disease. *J Clin Exp Neuropsychol* (2013) 35:472–9. doi: 10.1080/13803395.2013.789486
 37. Bechara A, Damasio H, Damasio AR, Lee GP. Different Contributions of the Human Amygdala and Ventromedial Prefrontal Cortex to Decision-Making. *J Neurosci* (1999) 19:5473–5481. doi: 10.1523/JNEUROSCI.19-13-05473.1999
 38. Zhang L, Wang X, Zhu Y, Li H, Zhu C, Yu F, et al. Selective impairment of decision making under ambiguity in alexithymia. *BMC Psychiatry* (2017) 17:1–8. doi: 10.1186/s12888-017-1537-2
 39. Chu C. The autonomic-related cortex: pathology in Alzheimer's disease. *Cereb Cortex* (1997) 7:86–95. doi: 10.1093/cercor/7.1.86
 40. Gleichgerricht E, Ibáñez A, Roca M, Torralva T, Manes F. Decision-making cognition in neurodegenerative diseases. *Nat Rev Neurol* (2010) 6:611–23. doi: 10.1038/nrneuro.2010.148
 41. Kessler J, Markowitsch HJ, Kalbe E, Brand M, Fujiwara E, Labudda K. Decision-making impairments in patients with pathological gambling. *Psychiatry Res* (2005) 133:91–9. doi: 10.1016/j.psychres.2004.10.003
 42. Brand M, Kalbe E, Kracht LW, Riebel U, Münch J, Kessler J, et al. Organic and psychogenic factors leading to executive dysfunctions in a patient suffering from surgery of a colloid cyst of the Foramen of Monro. *Neurocase* (2004) 10(6):420–5. doi: 10.1080/13554790490894002
 43. Burgio F, Delazer M, Meneghello F, Pertl MT, Semenza C, Zamarian L. Cognitive training improves ratio processing and decision making in patients with mild cognitive impairment. *J Alzheimer's Dis* (2018) 64:1213–26. doi: 10.3233/JAD-180461
 44. Alameda-Bailén JR, Salguero-Alcañiz MP, Merchán-Clavellino A, Paino-Quesada S. Cognitive Mechanisms in Decision-Making in Patients With Mild Alzheimer Disease. *Curr Alzheimer Res* (2017) 14:1248–55. doi: 10.2174/1567205014666170417113834
 45. Hornberger M, Yew B, Gilardoni S, Mioshi E, Gleichgerricht E, Manes F, et al. Ventromedial-frontopolar prefrontal cortex atrophy correlates with insight loss in frontotemporal dementia and Alzheimer's disease. *Hum Brain Mapp* (2014) 35:616–26. doi: 10.1002/hbm.22200
 46. Bertoux M, O'Callaghan C, Flanagan E, Hodges JR, Hornberger M. Frontostriatal atrophy in behavioral variant frontotemporal dementia and Alzheimer's disease. *Front Neurol* (2015) 6:147. doi: 10.3389/fneur.2015.00147
 47. Van Hoesen GW. Orbitofrontal Cortex Pathology in Alzheimer's Disease. *Cereb Cortex* (2000) 10(3):243–51. doi: 10.1093/cercor/10.3.243
 48. Balardin JB, Batistuzzo MC, Martin M da GM, Sato JR, Smid J, Porto C, et al. Differences in prefrontal cortex activation and deactivation during strategic episodic verbal memory encoding in mild cognitive impairment. *Front Aging Neurosci* (2015) 7:147. doi: 10.3389/fnagi.2015.00147
 49. Damasio AR. The somatic marker hypothesis and the possible functions of the prefrontal cortex. *Philos Trans R Soc B: Biol Sci* (1996) 351(1346):1413–20. doi: 10.1098/rstb.1996.0125
 50. Bechara A, Tranel D, Damasio H. Characterization of the decision-making deficit of patients with ventromedial prefrontal cortex lesions. *Brain* (2000) 123(Pt 11):2189–202. doi: 10.1093/brain/123.11.2189
 51. Zhao H, Li X, Wu W, Li Z, Qian L, Li SS, et al. Atrophic patterns of the frontal-subcortical circuits in patients with mild cognitive impairment and Alzheimer's disease. *PLoS One* (2015) 10(6):e0130017. doi: 10.1371/journal.pone.0130017
 52. Bayard S, Jacus JP, Raffard S, Gély Nargeot MC. Conscious knowledge and decision making under ambiguity in mild cognitive impairment and Alzheimer disease. *Alzheimer Dis Assoc Disord* (2015) 29:357–9. doi: 10.1097/WAD.0000000000000061
 53. Spence S. Descartes' Error: Emotion, Reason and the Human Brain. *BMJ* (1995) 310:1213. doi: 10.1136/bmj.310.6988.1213
 54. Denburg NL, Cole CA, Hernandez M, Yamada TH, Tranel D, Bechara A, et al. The orbitofrontal cortex, real-world decision making, and normal aging. *Ann N Y Acad Sci* (2007) 1121:480–98. doi: 10.1196/annals.1401.031

Conflict of Interest: The authors declare that the research was conducted in the absence of any commercial or financial relationships that could be construed as a potential conflict of interest.

Copyright © 2020 Sun, Xie, Wang, Zhang, Tian, Wang, Yu and Wang. This is an open-access article distributed under the terms of the Creative Commons Attribution License (CC BY). The use, distribution or reproduction in other forums is permitted, provided the original author(s) and the copyright owner(s) are credited and that the original publication in this journal is cited, in accordance with accepted academic practice. No use, distribution or reproduction is permitted which does not comply with these terms.