


RESEARCH ARTICLE

Open Access



Assessment of changes of regional ventilation distribution in the lung tissue depending on the driving pressure applied during high frequency jet ventilation

Szymon Bialka¹, Maja Copik¹, Katarzyna Rybczyk¹, Aleksander Owczarek², Ewa Jedrusik², Damian Czyzewski³, Marek Filipowski³, Eva Rivas^{4,5}, Kurt Ruetzler⁴, Lukasz Szarpak^{6*}  and Hanna Misiolek¹

Abstract

Background: Electrical impedance tomography (EIT) is a tool to monitor regional ventilation distribution in patient's lungs under general anesthesia. The objective of this study was to assess the regional ventilation distribution using different driving pressures (DP) during high frequency jet ventilation (HFJV).

Methods: Prospective, observational, cross-over study. Patients undergoing rigid bronchoscopy were ventilated HFJV with DP 1.5 and 2.5 atm. Hemodynamic and ventilation parameters, as well as ventilation in different regions of the lungs in percentage of total ventilation, assessed by EIT, were recorded.

Results: Thirty-six patients scheduled for elective rigid bronchoscopy. The final analysis included thirty patients. There was no significant difference in systolic, diastolic and mean arterial blood pressure, heart rate, and peripheral saturation between the two groups. Peak inspiratory pressure, mean inspiratory pressure, tidal volume, and minute volume significantly increased in the second, compared to the first intervention group. Furthermore, there were no statistically significant differences between each time profiles in all ROI regions in EIT.

Conclusions: In our study intraoperative EIT was an effective method of functional monitoring of the lungs during HFJV for rigid bronchoscopy procedure. Lower driving pressure was as effective in providing sufficient ventilation distribution through the lungs as the higher driving pressure but characterized by lower airway pressure.

Trial registration: The study was registered on ClinicalTrials.gov under no. [NCT02997072](https://clinicaltrials.gov/ct2/show/study/NCT02997072).

Keywords: Jet ventilation, Driving pressure, High frequency, Inspiratory pressure

Background

High frequency jet ventilation (HFJV) is a time cycled, pressure limited mode of ventilation that facilitate gas exchange by utilizing smaller tidal volumes from a high pressure at supraphysiologic frequencies between 120 and 400 min^{-1} followed by a passive expiration [1]. HFJV offers the advantage of sufficient ventilation of patients lung's and simultaneous low motion of the patients airway including the vocal cords. Consequently, HFJV is commonly used in Ear-Nose-Throat surgery, thoracic surgery and for rigid bronchoscopy [2, 3].

Mechanical ventilation with high tidal volume and low levels of positive end-expiratory pressure can promote ventilator induced lung injury (VILI), and thus increase morbidity and mortality [4]. Additionally, inhomogeneity in lung aeration exerts unequal stress on the lung parenchyma and might be another important contributor. Standardized measurements of ventilation parameters like tidal volume, peak volume or lung compliance, do not reliably translate the regional distribution of tidal volumes [5, 6].

Electrical Impedance Tomography (EIT) is a non-invasive, radiation free technology to measure the electrical impedance of the lungs, which corresponds to ventilation. In short, better ventilated parts of the lung are represented by

* Correspondence: Lukasz.szarpak@gmail.com

⁶Lazarski University, 43 Swieradowska Str, 02-662 Warsaw, Poland
Full list of author information is available at the end of the article



higher electrical impedance. The impedance is measured via 16 surface electrodes attached via an elastic band around the patient's chest and transmitted to the device. The metrics are processed to colorful images, allowing real-time continuous visualization and observation of regional differences of the ventilated lungs [7]. The EIT has been proven in various clinical settings to be a reliable and accurate bedside monitoring system of the ventilation [8–13].

Increasing driving pressure (Pplat – PEEP) in intubated and ventilated patients does have an impact on improving regional ventilation, but whether this improvement is also applicable in patients under HFJV is unknown [14, 15]. We tested the hypothesis, that increasing driving pressure from 1.5 to 2.5 atm caused increased regional ventilation distribution in 4 a priori defined regions of interests (ROI) in the lung.

Methods

We aimed to investigate, if increasing driving pressure causes increased ventilation of dependent lung areas.

This is a prospective, crossover clinical study. With approval from the institutional review board of the Medical University of Silesia, Katowice, Poland (identifier: KNW/0022/KB1/42/16; Chairperson Prof. M. Trusz-Gluzka), and written informed consent, we enrolled 36 patients having elective rigid bronchoscopy requiring HFJV. The patients were enrolled at the Medical University of Silesia between July 2014 and December 2016, and the study was registered in clinicaltrials.gov on (identifier: NCT02997072; posted on ClinicalTrials on December, 2016).

Participating patients were between 18 and 60 years, had an American Society of Anesthesiologists (ASA) physical status I–III, and a body mass index (BMI) of 19–30 kg/m².

We excluded patients having emergency surgeries, known airway trauma and thoracic wall deformities, obesity (BMI > 30 kg/m²), and cardiac implantable electronic devices (pacemaker, ICD).

Protocol

Patients were premedicated with oral midazolam 0.1 mg kg⁻¹ one hour prior to arrival to operating room as clinical routine. After arrival in the operating room, the EIT electrode belt (*PulmoVista 500, Dräger, Medical GmbH, Germany*) was placed around patient's thorax under the 5th intercostal space. The reference electrode was placed on patient's abdomen according to manufacturer's instructions. Patients were also monitored with continuous 5 lead ECG, non-invasive blood pressure, and peripheral oxygen saturation as clinical routine.

General anesthesia was induced with propofol 2 mg/kg⁻¹, mivacurium 0.15 mg/kg⁻¹ and fentanyl 1.5 µg/kg⁻¹

¹. Additional medication was given as clinically appropriate.

After confirmation of complete muscle relaxation by absence of palpable twitches in response to supra-maximal train-of-four stimulation of the ulnar nerve at the wrist, the rigid bronchoscope (Karl Storz, Germany) was introduced by the surgeon. Once optimal visualization of the vocal cords could be achieved, position of the bronchoscope was fixed, and the HFJV (*Universal Jet Ventilator Monsoon DeLuxe Acutronic, Switzerland*) was connected via the side channel of the bronchoscope. Initial ventilation setting included driving pressure of 1.5 atm, inspiratory time of 40%, gas humidifying 40%, and a respiration rate of 180/min (= first intervention group). The proximal end (visor) of the bronchoscope was always open during the complete surgery.

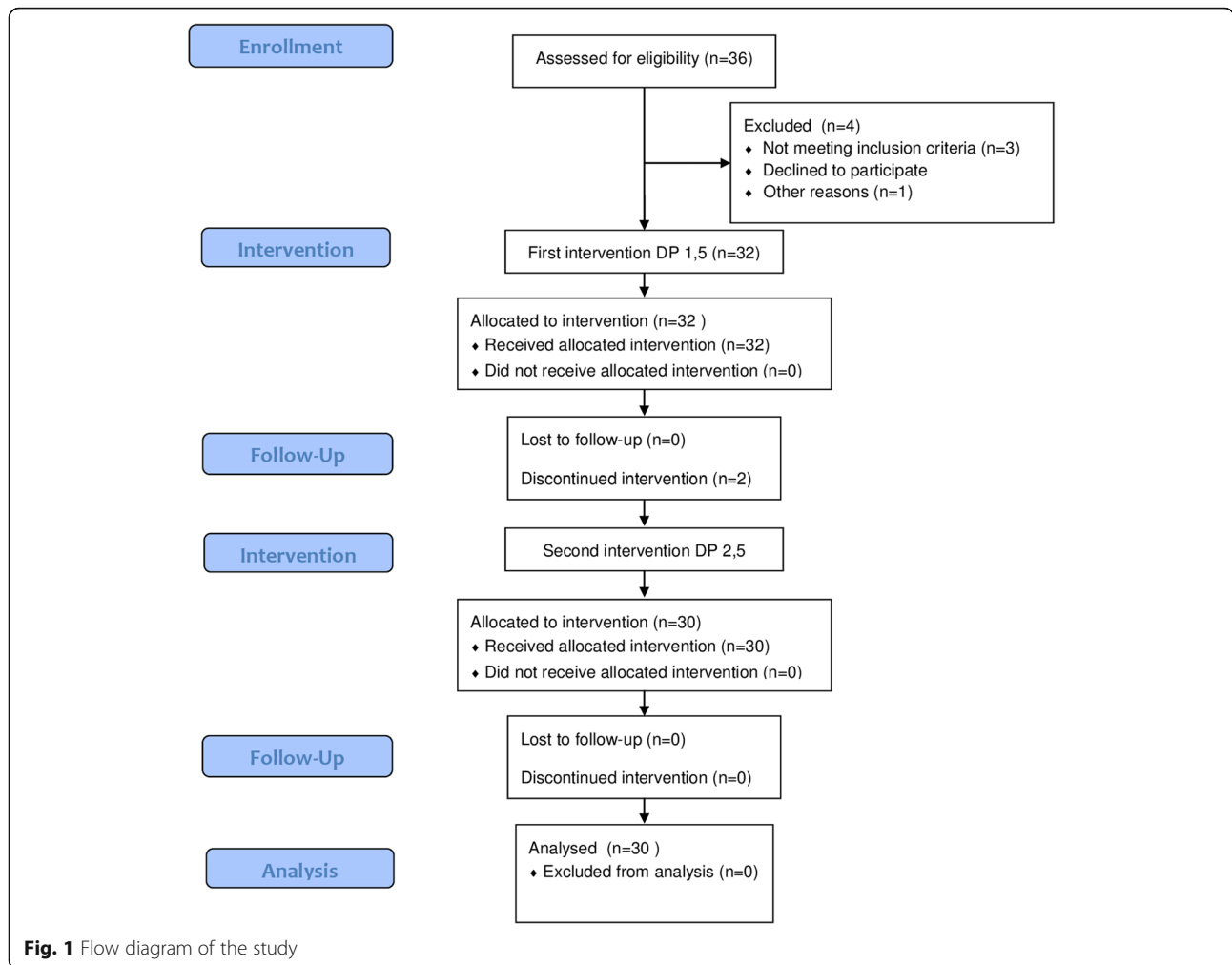
After 5 min of ventilation, the driving pressure was increased to 2.5 atm, while the other ventilation settings remained unchanged (=second intervention group). The fraction of oxygen was 1.0 throughout the complete procedure.

Peak Inspiratory Pressure (PIP), Mean Inspiratory Pressure (MIP), Tidal Volume (TV) and Minute Ventilation (MV) were monitored via bronchoscope side channel with jet catheter.

General anesthesia was maintained by continuous infusion of propofol and titrated as clinically appropriate. Continuous deep neuromuscular blockade was confirmed throughout the procedure and boluses of mivacurium were given per clinical judgement. After end to the surgical procedure, the rigid bronchoscope was removed and patients were intubated with a standard single lumen tube. Afterwards patients were transferred to the post-anesthesia care unit (PACU). Mechanical ventilation was maintained and muscle relaxation was reversed. Once patient fully recovered from anesthesia, patients were extubated and remained in the PACU as clinically appropriate.

Measurements

To characterize distribution of regional ventilation, we a priori defined 4 regions of interest (ROI 1–4), which are based on the technical characteristics of the device used. The analyzed ROI divides the lungs into horizontal layers from dorsal-to ventral position. We decided to use this particular ROI, based on the assumption, that dependent lung areas are likely to develop atelectasis during general anesthesia. The use of EIT technology allows to determine the size and location of this atelectasis. During the study, the spread of ROIs were adjusted so that all layers were equal. Interpretation of the functional images relates to distribution of ventilation within the EIT sensitivity region and its changes over time. Numerical values



indicate percentage of total ventilation in each region within 15 s time periods.

During an EIT examination, minimal alternating electrical currents were applied through pairs of electrodes and the resulting voltages are measured on the

remaining electrodes. The most widespread spatial pattern of current applications and voltage measurements is through adjacent electrode pairs. Functional EIT images are generated from series of raw images and the corresponding pixel EIT waveforms, by the

Table 1 Results of parametric analysis of variance with repeated measurements and descriptive statistics

	DP 1.5			DP 2.5			P _{GROUP}	P _{TIME}	P _{INTERACTION}
	0 min	3 min	5 min	0 min	3 min	5 min			
SBP [mmHg]	114.5 ± 22.8	113.2 ± 18.9	110.9 ± 16.7	116.1 ± 24.8	113.0 ± 23.4	108.6 ± 22.2	0.95	< 0.05	0.55
DBP [mmHg]	76.3 ± 14.6	73.3 ± 10.8	72.5 ± 10.1	76.2 ± 14.0	74.5 ± 13.6	71.1 ± 13.8	0.97	< 0.01	0.60
MBP [mmHg]	92.0 ± 16.7	89.6 ± 14.0	87.8 ± 12.3	92.7 ± 19.1	90.5 ± 15.1	87.6 ± 17.2	0.89	< 0.01	0.92
HR [beats/min]	80.7 ± 13.0	79.3 ± 13.3	78.9 ± 12.9	80.9 ± 12.9	80.7 ± 13.6	79.5 ± 14.4	0.83	0.06	0.56
SpO ₂ [%]	97.5 ± 2.9	97.5 ± 3.2	96.9 ± 3.8	98.3 ± 1.7	98.0 ± 2.5	98.1 ± 2.1	0.23	0.20	0.18
PIP [cm H ₂ O]	6.2 ± 2.8	6.3 ± 2.7	6.3 ± 2.7	9.4 ± 4.3	9.3 ± 4.2	9.5 ± 4.2	< 0.01	0.47	0.25
MAP [cm H ₂ O]	2.5 ± 1.3	2.5 ± 1.3	2.4 ± 1.2	4.5 ± 2.2	4.4 ± 2.1	4.4 ± 2.1	< 0.001	0.28	0.75
TV [mL]	121.6 ± 6.8	121.5 ± 6.7	121.5 ± 6.8	149.2 ± 6.5	150.0 ± 5.3	149.8 ± 5.2	< 0.001	0.42	0.44
MV [L]	21.8 ± 1.2	21.7 ± 1.1	22.0 ± 1.5	26.5 ± 0.9	26.6 ± 0.6	26.6 ± 0.6	< 0.001	0.28	0.43

Interaction – between group and times

use of appropriate mathematical equations. Interpretation of the functional images allows to assess distribution of ventilation within the EIT sensitivity region and its changes over time. Numerical values indicate percentage of total ventilation in each layer within 15 s time periods.

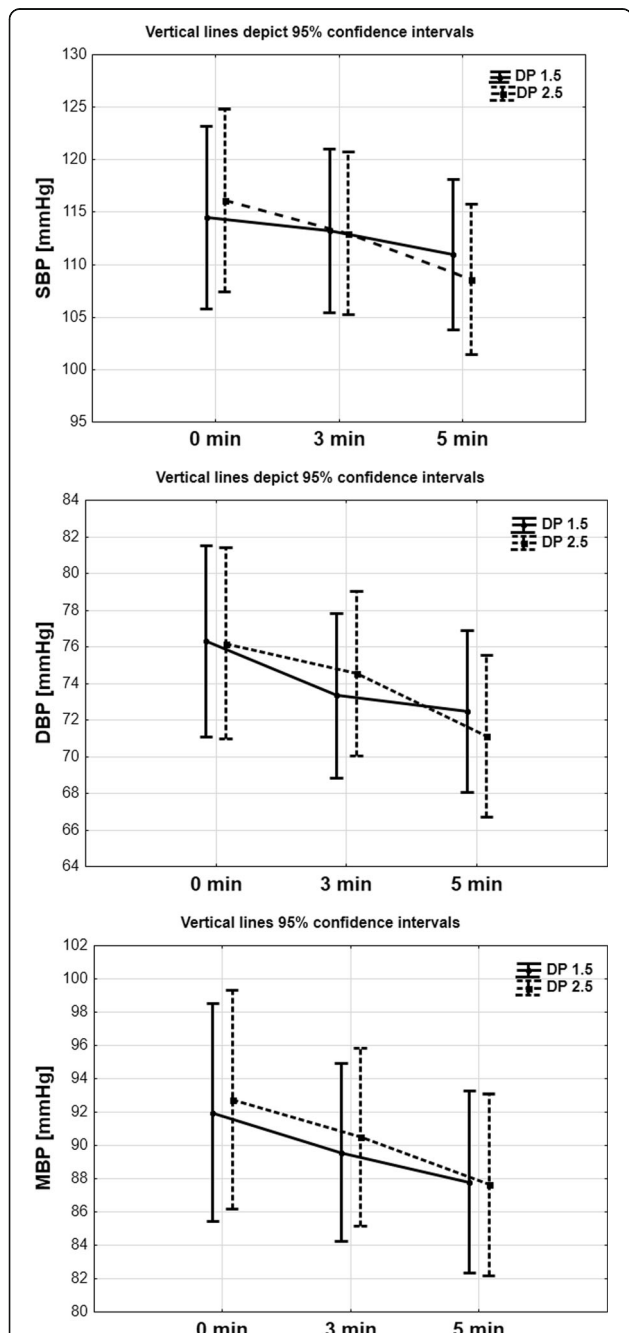


Fig. 2 Comparison Systolic Arterial Pressure (SBP, mmHg), Diastolic Arterial Pressure (DAP, mmHg) and Mean Arterial Pressure (MAP, mmHg) in 5th minute observed time in DP 1,5 and DP 2,5 group

Statistical analysis

Statistical analysis was performed using STATISTICA 10.0 PL (StatSoft, Poland, Cracow). Statistical significance was set at a *p* value below 0.05. All tests were two-tailed. Interval data were expressed as mean value ± standard deviation. Distribution of variables was evaluated by the Shapiro-Wilk test and homogeneity of variances was assessed by the Levene test. For comparison of data between driving pressure 1.5 atm and driving pressure 2.5 atm groups, one-way ANOVA analysis with repeated measurement was done with contrast comparison as post-hoc tests. The distance-weighted least squares method was used to illustrate time changes of tidal volumes in four regions of interest separately for each driving pressure group.

Results

Thirty-six patients were enrolled into this clinical study, but four patients had to be excluded. The remaining 32 patients were included into this study and underwent the first intervention (driving pressure of 1.5 atm).

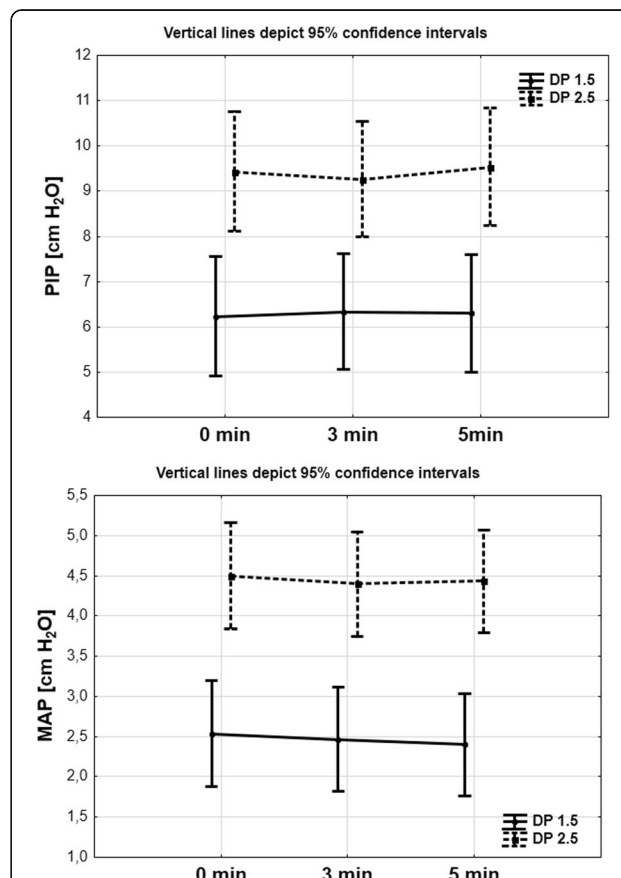


Fig. 3 Comparison Peak Inspiratory Pressure (PIP, cm H₂O) and Mean Inspiratory Pressure (MIP, cm H₂O) in 5th minute observed time in DP 1,5 and DP 2,5 group

Surgical procedure ended in 2 patients, before the second intervention was started. Consequently 30 patients (16 females, 61,5 years old and BMI 26,9 kg/m²), underwent also the second intervention (driving pressure of 2.5 atm) were included in the final analysis (Fig. 1).

The results of parametric analysis of variance with repeated measurements are presented in Table 1. There was no significant difference in systolic, diastolic and mean arterial blood pressure, heart rate, and peripheral saturation between the two groups (Fig. 2).

Peak inspiratory pressure, mean inspiratory pressure, tidal volume, and minute volume significantly increased in the second, compared to the first intervention group (2.5 versus 1.5 atm; Table 1; Fig. 3).

Tidal volume time changes between groups (DP 1.5 vs 2.5) were calculated. There were no statistically significant differences between each time profiles in all ROI regions:

- ROI 1: group influence ($p = 0.73$), group and time interaction ($p = 0.29$),

- ROI 2: group influence ($p = 0.71$), group and time interaction ($p = 0.65$),
- ROI 3: group influence ($p = 0.41$), group and time interaction ($p = 0.94$),
- ROI 4: group influence ($p = 0.40$), group and time interaction ($p = 0.19$; Fig. 4).

Discussion

The most important finding of this study is, that increased driving pressure did increase overall tidal volumes, but this was mostly based on over-inflation of ventilated lung areas, instead of distributing ventilation to less ventilated lung areas.

The EIT was previously reported as an accurate method to detect ventilation inhomogeneity and was validated by several methods including radionuclide scanning, spirometer, and single-photo emission computed tomography [16–19]. Images gained by the EIT technology were previously used to identify the lung areas which are under and over ventilated (collapse or overinflated) [20].

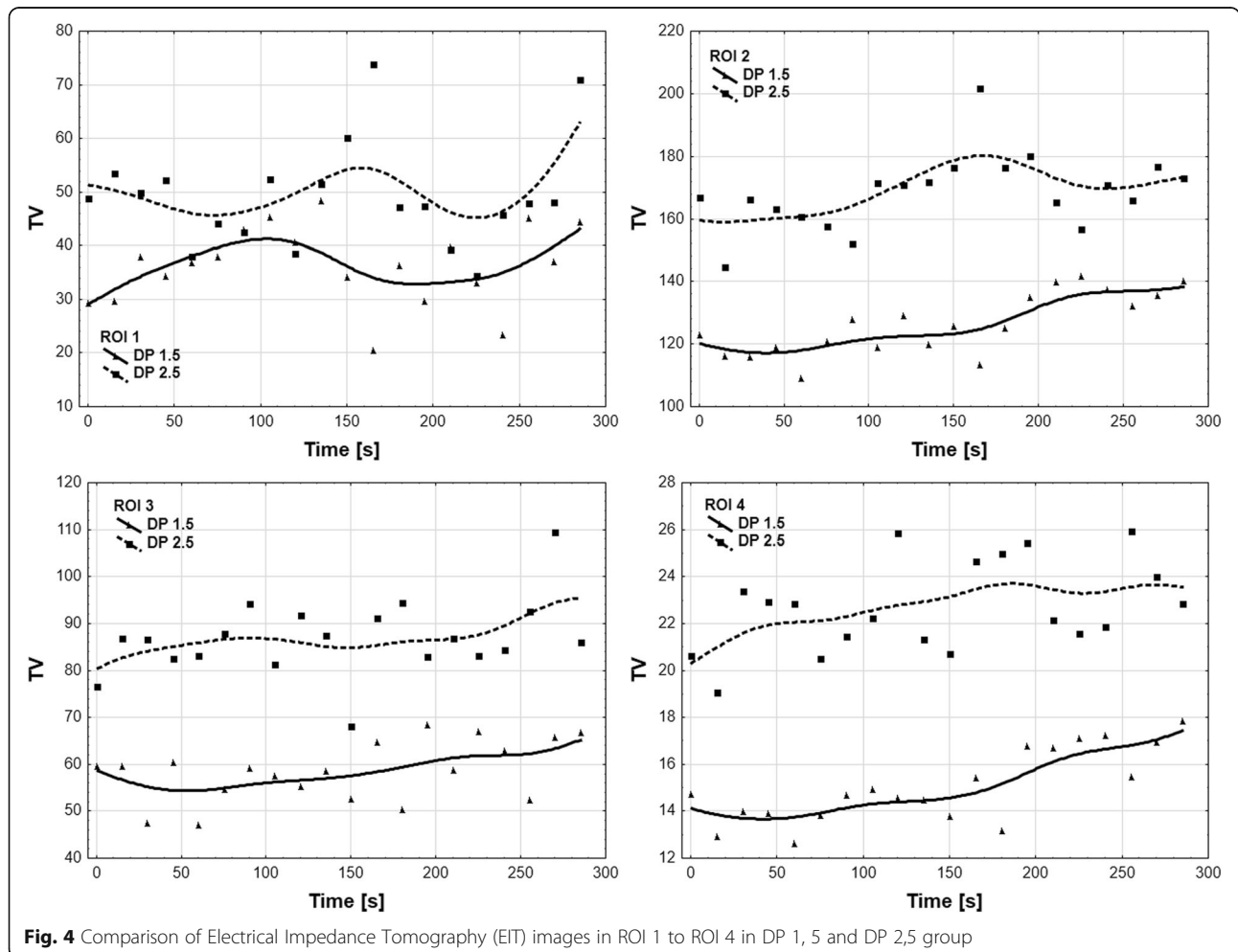


Fig. 4 Comparison of Electrical Impedance Tomography (EIT) images in ROI 1 to ROI 4 in DP 1,5 and DP 2,5 group

During general anesthesia and in supine position, non-dependent parts of patient's lungs are preferentially ventilated. Consequently, the lung strain is distributed heterogeneously among various regions of lung, with the maximum along the anteroposterior axis [21, 22]. This heterogeneity in distribution leads to atelectasis and potentially impairs CO₂ elimination [23].

We decided to compare the driving pressure of 1.5 atm versus 2.5 atm and hypothesized, that increased driving pressure will improve regional ventilation distribution in dependent regions. Results of our study indicate, that ventilation in all lung areas increased, but non-dependent areas were still much better ventilation compared to dependent areas. Consequently, we did not find any hints, that increased tidal volumes are based on any significant shift of ventilation.

Increased driving pressure is applied in the clinical setting in order to provide higher tidal volumes, which is reflected by results of our study. Increased tidal volumes was mostly due increased ventilation of already ventilated non-dependent lung areas (represented as ROI 2 in our study). Dependent lung areas like the ROI 4 in our study were also more ventilated, but tidal volumes were still minimum. Increased tidal volumes and thereby caused stretch of lung tissues is potentially worrisome by causing local inflammation via interleukins (IL4, IL6) which is known to initiate ventilator induced lung injury [24]. Extra driving pressures across inhomogeneous lung may cause surfactant deactivation and alveolar edema disrupting alveolar interdependence leading to inhomogeneous ventilation [25].

Intraoperative ventilatory management is definitely not trivial, as this significantly impairs postoperative respiratory course [26]. Specifically increased driving pressure, is associated with increased risk of postoperative pulmonary complications [27]. Consequently, anesthesiologist should aim to reduce the driving pressure to a minimum level, as clinically appropriate.

The findings of our study have some limitations. First, patients in our study tended to be slimmer compared to the general population. Higher BMI affects chest wall compliance due to the mass load effect and secondary causing increased pleural pressure. Airway driving pressures may vary over a wide range in patients according to the BMI. Second, we did not measure arterial oxygenation or CO₂ elimination. Third, this study was designed as a sequential study and although physiologically highly unlikely, previous ventilation with lower driving pressure might have affected subsequent ventilation with higher driving pressure. However, a randomized ventilation strategy might have addressed this potential interference. Fourth, improved ventilation consequently leads to better oxygenation, which was outside of the scope of the current project and consequently, arterial blood analyses

were not performed. Finally, although of being of clinical interest, we did not assess atelectasis after the procedure and any clinical complications like pneumothorax.

Conclusions

Applying higher driving pressure is commonly used in the clinical setting to increase tidal volumes in order to maintain adequate oxygenation. Increased tidal volumes were achieved by over-inflation of already ventilated non-dependent lung areas, instead of any significant shift to less ventilated dependent lung areas.

Abbreviations

ASA: American Society of Anesthesiologists; BMI: body mass index; DP: driving pressure; ECG: electrocardiogram; EIT: electrical impedance tomography; HFJV: high frequency jet ventilation; MIP: mean inspiratory pressure; MV: minute ventilation; PACU: post-anesthesia care unit; PIP: peak inspiratory pressure; TV: tidal volume; VILI: ventilator induced lung injury

Acknowledgements

We are grateful to all the physicians, nursing staff, and patients who participated in this study.

Funding

This study was funded by the Medical University of Silesia. The funding bodies did not participate in the design of the study and collection, analysis, and interpretation of data and in writing the manuscript.

Availability of data and materials

The datasets used and/or analyzed during the current study available from the corresponding author on request.

Authors' contributions

SB, HM, DC, MF, KRy and MC recruited the patients, collected the data, performed preliminary data analysis and drafted the manuscript. AO and EJ performed detailed statistical analysis and prepared the fig. SB, MC, KRu, LS, ERV and HM participated in the discussion and improved the manuscript. SB, LS made substantial contributions to the original idea and design, analyses and interpretation of data as well as revising the manuscript. LS is the corresponding author and is responsible for the finalization of the manuscript. All authors have read and approved the final manuscript.

Ethics approval and consent to participate

The study protocol has been approved by the Institutional Review Boards of the Medical University of Silesia, Katowice, Poland (identifier: KNW/0022/KB1/42/16), and written informed consent was obtained from the patients before their enrollment in the study.

Consent for publication

All included patients or their family members signed the informed consent form to report individual patient data. All authors have confirmed the manuscript and approved the publication of the manuscript.

Competing interests

Kurt Ruetzler, MD serves as an associate editor of *BMC Anesthesiology*, but was not involved in handling this manuscript in any manner. The authors declare that they have no competing interest.

Publisher's Note

Springer Nature remains neutral with regard to jurisdictional claims in published maps and institutional affiliations.

Author details

¹Chair and Department of Anesthesiology, Intensive Therapy and Emergency Medicine, Medical University of Silesia, Katowice, Poland. ²Department of Statistics, School of Pharmacy with the Division of Laboratory Medicine in Sosnowiec, Medical University of Silesia, Katowice, Poland. ³Chair and

Department of Chest Surgery, Medical University of Silesia, Katowice, Poland.
⁴Department of Outcomes Research, Cleveland Clinic, Cleveland, OH, USA.
⁵Hospital Clinic of Barcelona, IDIBPAS, University of Barcelona, Barcelona, Spain.
⁶Lazarski University, 43 Swieradowska Str, 02-662 Warsaw, Poland.

Received: 5 April 2018 Accepted: 27 June 2018

Published online: 31 July 2018

References

- Fritzsche K, Osmer A. Anesthetic management in laryngotracheal surgery. High-frequency jet ventilation as strategy for ventilation during general anesthesia. *Hno*. 2011;59:931–41. quiz 942–3
- Pathak V, Welsby I, Mahmood K, Wahidi M, MacIntyre N, Shofer S. Ventilation and anesthetic approaches for rigid bronchoscopy. *Ann Am Thorac Soc*. 2014;11:628–34.
- Ahuja S, Cohen B, Hinkelbein J, Diemunsch P, Ruetzler K. Practical anesthetic considerations in patients undergoing tracheobronchial surgeries: a clinical review of current literature. *J Thorac Dis*. 2016;8:3431–41.
- Plotz FB, Slutsky AS, van Vught AJ, Heijnen CJ. Ventilator-induced lung injury and multiple system organ failure: a critical review of facts and hypotheses. *Intensive Care Med*. 2004;30:1865–72.
- Kunst PW, Bohm SH, Vazquez de Anda G, Amato MB, Lachmann B, Postmus PE, de Vries PM. Regional pressure volume curves by electrical impedance tomography in a model of acute lung injury. *Crit Care Med*. 2000;28:178–83.
- Hickling KG. The pressure-volume curve is greatly modified by recruitment. A mathematical model of ARDS lungs. *Am J Respir Crit Care Med*. 1998;158:194–202.
- Frerichs I, Amato MB, van Kaam AH, Tingay DG, Zhao Z, Grychtol B, Bodenstein M, Gagnon H, Bohm SH, Teschner E, Stenqvist O, Mauri T, Torsani V, Camporota L, Schibler A, Wolf GK, Gommers D, Leonhardt S, Adler A. Chest electrical impedance tomography examination, data analysis, terminology, clinical use and recommendations: consensus statement of the TRanslational EIT developmeNt stuDY group. *Thorax*. 2017;72:83–93.
- Karsten J, Grusnick C, Paarmann H, Heringlake M, Heinze H. Positive end-expiratory pressure titration at bedside using electrical impedance tomography in post-operative cardiac surgery patients. *Acta Anaesthesiol Scand*. 2015;59:723–32.
- Blankman P, Hasan D, Erik G, Gommers D. Detection of 'best' positive end-expiratory pressure derived from electrical impedance tomography parameters during a decremental positive end-expiratory pressure trial. *Crit Care*. 2014;18:R95.
- Blankman P, Hasan D, van Mourik MS, Gommers D. Ventilation distribution measured with EIT at varying levels of pressure support and neurally adjusted ventilatory assist in patients with ALI. *Intensive Care Med*. 2013;39:1057–62.
- Richard JC, Pouzot C, Gros A, Tourevielle C, Lebars D, Lavenne F, Frerichs I, Guerin C. Electrical impedance tomography compared to positron emission tomography for the measurement of regional lung ventilation: an experimental study. *Crit Care*. 2009;13:R82.
- Shi C, Boehme S, Bentley AH, Hartmann EK, Klein KU, Bodenstein M, Baumgardner JE, David M, Ullrich R, Markstaller K. Assessment of regional ventilation distribution: comparison of vibration response imaging (VRI) with electrical impedance tomography (EIT). *PLoS One*. 2014;9:e86638.
- Hinz J, Moerer O, Neumann P, Dudykevych T, Hellige G, Quintel M. Effect of positive end-expiratory-pressure on regional ventilation in patients with acute lung injury evaluated by electrical impedance tomography. *Eur J Anaesthesiol*. 2005;22:817–25.
- Spaeth J, Daume K, Goebel U, Wirth S, Schumann S. Increasing positive end-expiratory pressure (re-)improves intraoperative respiratory mechanics and lung ventilation after prone positioning. *Br J Anaesth*. 2016;116:838–46.
- He X, Jiang J, Liu Y, Xu H, Zhou S, Yang S, Shi X, Yuan H. Electrical impedance tomography-guided PEEP titration in patients undergoing laparoscopic abdominal surgery. *Medicine (Baltimore)*. 2016;95:e3306.
- Frerichs I, Hinz J, Herrmann P, Weisser G, Hahn G, Dudykevych T, Quintel M, Hellige G. Detection of local lung air content by electrical impedance tomography compared with electron beam CT. *J Appl Physiol* (1985). 2002; 93:660–6.
- Hahn G, Sipinkova I, Baisch F, Hellige G. Changes in the thoracic impedance distribution under different ventilatory conditions. *Physiol Meas*. 1995;16: A161–73.
- Hinz J, Neumann P, Dudykevych T, Andersson LG, Wrigge H, Burchardi H, Hedenstierna G. Regional ventilation by electrical impedance tomography: a comparison with ventilation scintigraphy in pigs. *Chest*. 2003;124:314–22.
- Kunst PW, Vonk Noordegraaf A, Hoekstra OS, Postmus PE, de Vries PM. Ventilation and perfusion imaging by electrical impedance tomography: a comparison with radionuclide scanning. *Physiol Meas*. 1998;19:481–90.
- Spadaro S, Mauri T, Bohm SH, Scaramuzza G, Turrini C, Waldmann AD, Ragazzi R, Pesenti A, Volta CA. Variation of poorly ventilated lung units (silent spaces) measured by electrical impedance tomography to dynamically assess recruitment. *Crit Care*. 2018;22:26.
- Paula LF, Wellman TJ, Winkler T, Spieth PM, Guldner A, Venegas JG, Gama de Abreu M, Carvalho AR, Vidal Melo MF. Regional tidal lung strain in mechanically ventilated normal lungs. *J Appl Physiol* (1985). 2016;121:1335–47.
- Gattinoni L, Caironi P. Prone positioning: beyond physiology. *Anesthesiology*. 2010;113:1262–4.
- Duggan M, Kavanagh BP. Pulmonary atelectasis: a pathogenic perioperative entity. *Anesthesiology*. 2005;102:838–54.
- Sutherasan Y, Vargas M, Pelosi P. Protective mechanical ventilation in the non-injured lung: review and meta-analysis. *Crit Care*. 2014;18:211.
- Protti A, Andreis DT, Monti M, Santini A, Sparacino CC, Langer T, Votta E, Gatti S, Lombardi L, Leopardi O, Masson S, Cressoni M, Gattinoni L. Lung stress and strain during mechanical ventilation: any difference between statics and dynamics? *Crit Care Med*. 2013;41:1046–55.
- Ladha K, Vidal Melo MF, McLean DJ, Wanderer JP, Grabitz SD, Kurth T, Eikermann M. Intraoperative protective mechanical ventilation and risk of postoperative respiratory complications: hospital based registry study. *Bmj*. 2015;351:h3646.
- Neto AS, Hammes SN, Barbas CS, Beiderlinden M, Fernandez-Bustamante A, Futier E, Gajic O, El-Tahan MR, Ghamdi AA, Gunay E, Jaber S, Kokulu S, Kozian A, Licker M, Lin WQ, Maslow AD, Memtsoudis SG, Reis Miranda D, Moine P, Ng T, Paparella D, Ranieri VM, Scavonetto F, Schilling T, Selmo G, Severgnini P, Sprung J, Sundar S, Talmor D, Treschan T, Unzueta C, Weingarten TN, Wolthuis EK, Wrigge H, Amato MB, Costa EL, de Abreu MG, Pelosi P, Schultz MJ. Association between driving pressure and development of postoperative pulmonary complications in patients undergoing mechanical ventilation for general anaesthesia: a meta-analysis of individual patient data. *Lancet Respir Med*. 2016;4:272–80.

Ready to submit your research? Choose BMC and benefit from:

- fast, convenient online submission
- thorough peer review by experienced researchers in your field
- rapid publication on acceptance
- support for research data, including large and complex data types
- gold Open Access which fosters wider collaboration and increased citations
- maximum visibility for your research: over 100M website views per year

At BMC, research is always in progress.

Learn more [biomedcentral.com/submissions](https://www.biomedcentral.com/submissions)

