

# **Systems Serology-Based Comparison of Humoral Immune Responses Induced by Liposome or Aluminum Hydroxide Adjuvanted SARS-CoV-2 Spike Protein**

Soo Ji Kim<sup>1,2</sup>, Taewoo Kim<sup>1</sup>, Satyanarayana Bejjani<sup>1</sup>, Mi Sun Kim<sup>1</sup>, Jung Hyuk Lee<sup>1</sup>, Yuna Shin<sup>1</sup>, Sun-Je Woo<sup>1</sup>, Beom Min Cheon<sup>1</sup>, Doyoung Kim<sup>1,2</sup>, Sumin Lee<sup>1</sup>, Eunjin Cho<sup>1</sup>, Junhyeon Lee<sup>1</sup>, Ruchirkumar Pansuriya<sup>1</sup>, Wook-Jin Park<sup>3</sup>, Gaurav Pandey<sup>1</sup>, Ravi Ganapathy<sup>1</sup>, Jung-Ah Choi<sup>1</sup>, Ju Yeon Park<sup>1</sup>, Deok Ryun Kim<sup>1</sup>, Cheol-Heui Yun<sup>2</sup>, Jae Seung Yang<sup>1,\*</sup>, Byoung Shik Shim<sup>1,\*</sup>, Manki Song<sup>1,\*</sup>

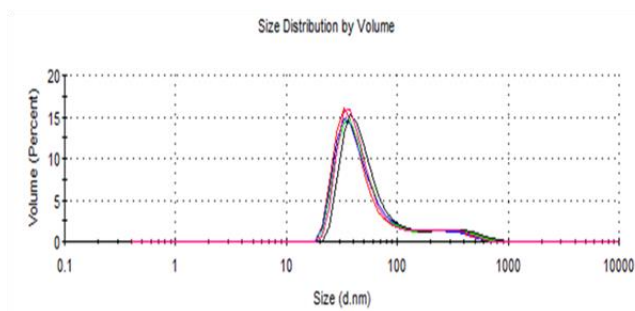
<sup>1</sup>Science unit, International Vaccine Institute, Seoul, 08826, Republic of Korea

<sup>2</sup>Department of Agricultural Biotechnology, and Research Institute of Agriculture and Life Sciences, Seoul National University, Seoul, 08826, Republic of Korea

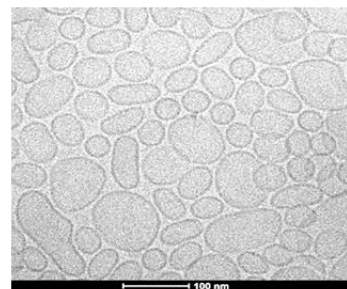
<sup>3</sup>Penn Institute for RNA Innovation, Perelman School of Medicine, University of Pennsylvania, Philadelphia, PA, USA

\*Address correspondence to Jae Seung Yang, [jsyang@ivi.int](mailto:jsyang@ivi.int); Byoung-Shik Shim, [byoungshik.shim@ivi.int](mailto:byoungshik.shim@ivi.int); Manki Song, [mksong@ivi.int](mailto:mksong@ivi.int)

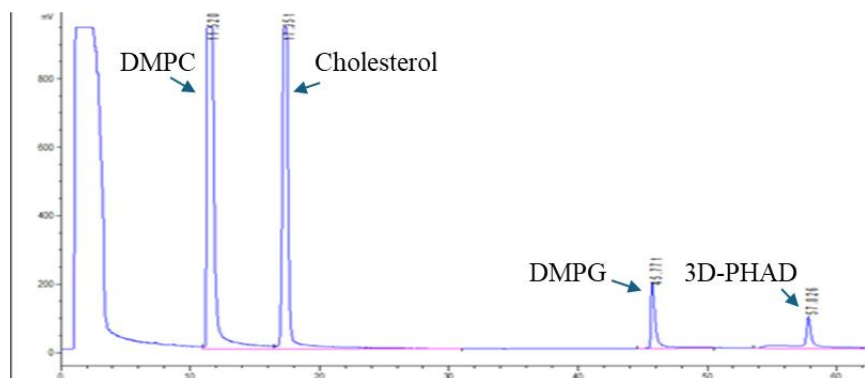
A



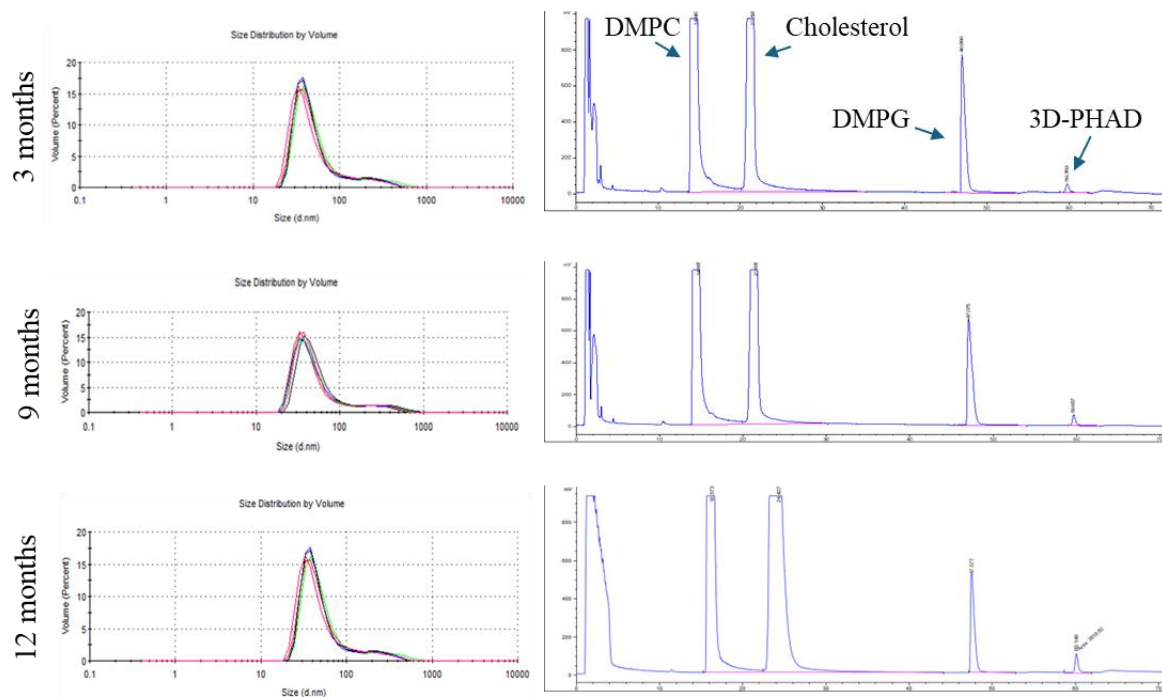
B



C



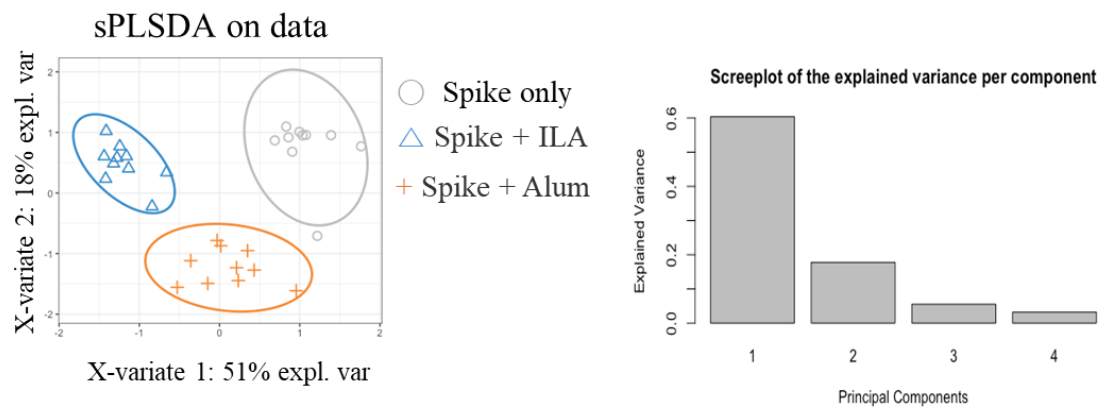
D



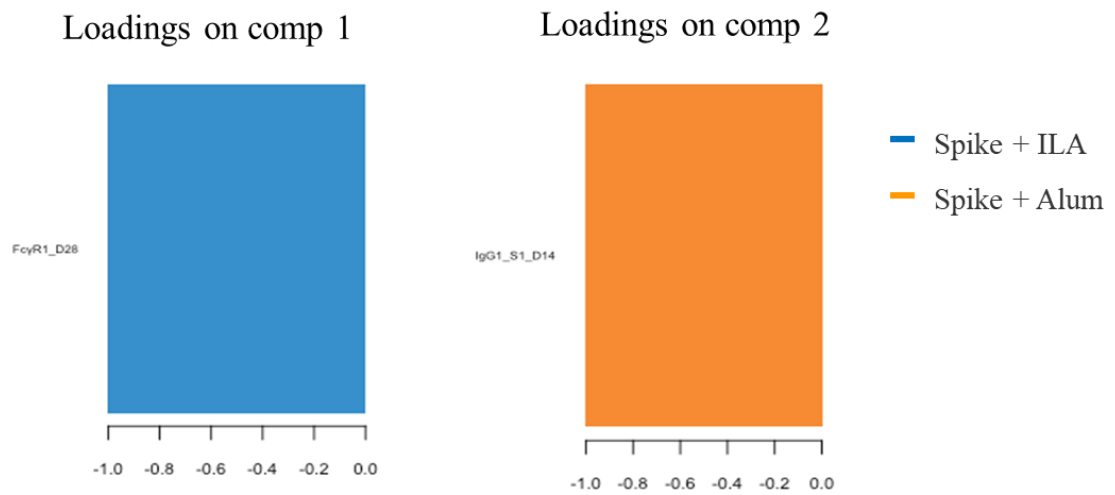
### **Supplementary Figure 1. Characterization and stability of ILA**

(A) Particle size of ILA measured using a Zetasizer. Y-axis indicates volume percent of scattered light; X-axis shows particle diameter in nanometers. Red, green, and black lines represent independent DLS spectral readings. (B) Cryo-TEM images showing the morphology of ILA in PBS buffer. The bar scale represents 100 nm. (C) Quantitative analysis of lipid components using reverse-phase HPLC with ELSD detection. Y-axis shows detector response in mV; X-axis indicates retention time in minutes. (D) Stability assessment of ILA after storage at 4°C for 12 months.

A



B



### **Supplementary Figure 2. sPLSDA of humoral immune responses**

(A) The sPLS-DA model was applied with all features. (B) The loading factors of the first component were generated based on the sPLS-DA model. The length and color of the bar represent the contribution level and the group with the highest loading values, respectively.