

RESEARCH ARTICLE

Effect of smoking status and programmed death-ligand 1 expression on the microenvironment and malignant transformation of oral leukoplakia: A retrospective cohort study

Takahiro Yagyuu ^{*}, Naoki Funayama, Mitsuhiro Imada, Tadaaki Kirita

Department of Oral and Maxillofacial Surgery, Nara Medical University, Kashihara, Nara, Japan

^{*} t-yagyuu@naramed-u.ac.jp

Abstract

Tobacco smoking is associated with an increased risk of oral leukoplakia and head and neck cancer. Although it has recently been reported that the establishment of an immunosuppressive microenvironment in oral potentially malignant disorders may lead to malignant transformation, it is unclear whether the microenvironments of oral potentially malignant disorders differ according to smoking status. We examined differences in programmed death-ligand 1 (PD-L1) expression and subepithelial CD163+ TAM and CD8+ cell/lymphocyte counts in the microenvironment of oral leukoplakia of smoking and non-smoking patients and investigated their associations with malignant transformation. Pathology reports and original biopsy request forms from 1995–2015 were retrospectively reviewed. Lesions clinically characterized as white plaques/lesions of the oral mucosa and pathologically diagnosed as oral epithelial dysplasia were included. Immunohistochemistry was performed to evaluate PD-L1 expression and subepithelial CD163+/CD8+ cell counts. The significance of prognostic factors in predicting malignant transformation was determined using Cox regression analysis. Statistical significance was defined as $P < 0.05$. In total, 200 patients with oral leukoplakia were selected. The mean age at diagnosis was higher in non-smoking patients ($n = 141$; 66.9 years) than in smoking patients ($n = 59$; 60.5 years). The 5-year cumulative malignant transformation rate was higher in non-smoking patients than in smoking patients (9.3% vs. 3.0%, respectively). Oral leukoplakia was associated with significantly higher PD-L1 expression and increased numbers of subepithelial CD163+ cells in the non-smoking group compared with the smoking group. Non-smoking-related oral leukoplakia with positive PD-L1 expression was associated with a 6.97-fold (95% confidence interval: 2.14–22.7) increased risk of malignant transformation. The microenvironment of oral leukoplakia differed according to smoking status. A combination of smoking status and PD-L1 expression may predict malignant transformation in oral leukoplakia patients. This study highlights the importance of understanding the interaction between smoking and the microenvironment in oral leukoplakia.

OPEN ACCESS

Citation: Yagyuu T, Funayama N, Imada M, Kirita T (2021) Effect of smoking status and programmed death-ligand 1 expression on the microenvironment and malignant transformation of oral leukoplakia: A retrospective cohort study. PLoS ONE 16(4): e0250359. <https://doi.org/10.1371/journal.pone.0250359>

Editor: Muy-Teck Teh, Queen Mary University of London, UNITED KINGDOM

Received: January 26, 2021

Accepted: April 6, 2021

Published: April 16, 2021

Copyright: © 2021 Yagyuu et al. This is an open access article distributed under the terms of the [Creative Commons Attribution License](https://creativecommons.org/licenses/by/4.0/), which permits unrestricted use, distribution, and reproduction in any medium, provided the original author and source are credited.

Data Availability Statement: All relevant data are within the paper and its [Supporting Information](#) files.

Funding: The authors received no specific funding for this work.

Competing interests: The authors have declared that no competing interests exist.

Introduction

Oral potentially malignant disorders (OPMDs) are a group of conditions that may precede the development of oral squamous cell carcinoma (OSCC) [1, 2]. Oral leukoplakia (OL) is the most common OPMD in clinical practice. A systematic review [3] of observational studies of OL reported a malignant transformation rate ranging from 0.13% to 34.0%.

Tobacco smoking is associated with an increased risk of the development of OL and head and neck squamous cell carcinoma (HNSCC) [4–9]. Recently, increased uptake of smoking cessation has been reported [10] in developed countries, such as the United States, Australia, and Japan. A proportional increase in the prevalence of such lesions in non-smokers is expected. The malignant transformation rate of OL is higher in non-smokers than in smokers [11–15]. However, although some recent reports [16, 17] have shown that non-smokers with OSCC may have a worse prognosis, HNSCC is traditionally associated with better overall survival in non-smokers [18]. Non-smoking HNSCC patients had a significantly greater proportion of programmed death-ligand 1 (PD-L1)-positive cells in the microenvironment of HNSCC and had a higher response rate to anti-programmed death 1 (PD-1) checkpoint inhibitors than smoking HNSCC patients [19, 20]. The microenvironment of HNSCC differs according to smoking status. Although it was recently reported [21, 22] that the establishment of an immunosuppressive microenvironment in OPMDs and ductal carcinoma in situ of the breast, mediated by the activation of inhibitory checkpoints (e.g., the PD-1/PD-L1 pathway) or recruitment of immunosuppressive cells (e.g., tumor-associated macrophages [TAMs]), may lead to malignant transformation, it is unclear whether the microenvironment of OPMDs differs according to smoking status.

This study aimed to examine differences in PD-L1 expression and subepithelial CD163+ TAM and CD8+ cell/lymphocyte counts in the OL microenvironment between smoking and non-smoking patients and to investigate whether a combination of smoking status and the expression of such immune markers predicts malignant transformation. This study highlights the importance of understanding the interaction between smoking and the microenvironment in OL.

Materials and methods

Sample selection

The pathology reports and original biopsy request forms for all specimens received by the Department of Oral and Maxillofacial Surgery, Nara Medical University, between 1995 and 2015 were retrospectively reviewed. Lesions clinically characterized as white plaques/lesions of the oral mucosa and pathologically diagnosed as having oral epithelial dysplasia (OED) were included. Clinical information including age, sex, smoking and alcohol habits, site of lesion, histopathological details and type of treatment method were retrieved from the patients' medical records. The exclusion criteria included a previous diagnosis of OSCC/OED, OED with concomitant OSCC at the first visit, insufficient sample for analysis, and insufficient clinical information.

Cigarette equivalents were calculated as follows: one pipe equaled three cigarettes, and one cigar equaled two cigarettes. Smokers were defined as those who had smoked >100 cigarettes (or the equivalent) over the course of their lifetime [23]. Current drinkers were defined as those who had consumed alcoholic beverages of any type within 1 year prior to the date of diagnosis. Former drinkers were defined as those who had never drunk or those who had discontinued drinking for >1 year prior to the date of diagnosis [15, 24–26].

This study and all experimental procedures were approved by the ethics committee of Nara Medical University, Nara, Japan (approval date: April 21, 2014; approval number: 827).

Informed consent was waived because of the retrospective design, and the analysis used anonymous data. The work was carried out in accordance with The Code of Ethics of the World Medical Association (Declaration of Helsinki).

Evaluation of OED

OED was graded using hematoxylin and eosin-stained sections without any prior knowledge of the patients' clinical history. This assessment was based on the World Health Organization (WHO) dysplasia grading presented in 2017, as mild, moderate, and severe dysplasia [1]. For further statistical analyses, OED was classified as low-grade (mild dysplasia) or high-grade (moderate dysplasia and severe dysplasia).

PD-L1 expression and subepithelial CD163+ and CD8+ cell counts in the microenvironment

PD-L1 expression and subepithelial CD163+ and CD8+ cell counts were evaluated by immunohistochemistry. Paraffin sections at 5 μm thickness were deparaffinized. Antigen retrieval was performed by microwaving slides in citrate buffer (pH 6.0) for 30 minutes. Endogenous peroxidase activity was blocked by 0.3% hydrogen peroxide prepared in methanol for 10 minutes at room temperature. Following several washes with phosphate-buffered saline (PBS), sections were incubated with the following primary antibodies: anti-PD-L1 (1:50 dilution; Spring Bioscience, Pleasanton, CA, USA), anti-CD163 (1:50 dilution; Thermo Fisher Scientific, Kalamazoo, MI, USA), and anti-CD8 (1:100 dilution; Dako, Glostrup, Denmark) for 60 minutes at room temperature. One of three sections of each slide was incubated with isotype IgG antibodies (catalog no. ab172730; Abcam, Tokyo, Japan) to test the specificity of primary antibodies. Sections were washed twice in PBS and subsequently incubated with EnVision FLEX (DAKO JAPAN, Kyoto, Japan) at room temperature for 30 minutes. We visualized the immune reactions by staining slides with 3,3'-diaminobenzidine chromogen followed by counterstaining with Mayer's hematoxylin. The images were captured using an All-in-One Fluorescence BZ-X810 microscope (Keyence, Osaka, Japan).

Membranous PD-L1 staining of atypical epithelium and subepithelial cells was considered to evaluate PD-L1 expression. PD-L1 staining of the atypical epithelium was assessed according to the intensity of the staining and was scored as follows: 0 (negative), 1 (weak to moderate expression), or 2 (strong expression), according to previous reports [22, 27]. PD-L1 staining of subepithelial cells was evaluated by counting PD-L1+ cells in a subepithelial area $\leq 60 \mu\text{m}$ from the basement membrane, corresponding to the superficial lamina propria of the oral mucosa. Five high-power fields (40 \times objective, 10 \times ocular) were randomly selected, and the average count per mm^2 was calculated. We subsequently determined an optimal cutoff value for subepithelial PD-L1+ cell counts by receiver operating characteristic curve analysis. Patients with a subepithelial PD-L1+ cell count below the threshold were graded as 0, whereas patients with a subepithelial PD-L1+ cell count above the threshold were graded as 1. Epithelial and subepithelial PD-L1 staining scores (0, 1, or 2, and 0 or 1, respectively) were combined to quantify PD-L1 expression. Final scores ranged from 0 to 3, with PD-L1 positivity defined as a PD-L1 expression score of ≥ 1 .

CD163 is a member of the scavenger receptor cysteine-rich group B family [28] that is exclusively expressed in immunosuppressive TAMs [29–34], whereas CD8 is expressed by cytotoxic T lymphocytes, having a central role in the mediation of anti-tumor immunity [27, 35–38]. CD163+ and CD8+ cells were counted in a subepithelial area $\leq 60 \mu\text{m}$ from the basement membrane. Five high-power fields (40 \times objective, 10 \times ocular) were randomly selected, and the average count per mm^2 was calculated.

Statistical analyses

Student's t test, chi-squared test, and Mann–Whitney U test were used to determine the significance of associations between smoking status and extracted clinicopathological parameters. Recurrence was defined as the development of OED at the same biopsy site after total resection, including excisional biopsy. Malignancy-free survival was defined as the period from the date of diagnosis to malignant transformation [39]. The 5-year cumulative malignant transformation rate was estimated using the Nelson–Aalen method [40]. Patients without an event were censored at last follow-up.

The independent significance of prognostic factors was determined using the Cox proportional hazards model. The Schoenfeld residual was used to test whether the proportional hazards assumptions were true for any data set. Cox–Snell residuals were used to evaluate the overall fitness of the model [41, 42]. Variables with univariate associations showing $P < 0.1$ were included as confounding factors in the multivariate analysis.

All statistical analyses were conducted using STATA version 15 (StataCorp, College Station, Texas, USA). $P < 0.05$ was considered statistically significant.

Results

Clinicopathological characteristics

In total, 200 patients with OL were included; their clinicopathological characteristics are summarized in Table 1. The malignant transformation rate in the entire cohort was 7.5% ($n = 15$). The mean follow-up period was 55.4 months. One hundred forty-one patients (70.5%) were non-

Table 1. Clinical characteristics according to smoking status.

	Total (n = 200)	Non-smoker (n = 141)	Smoker (n = 59)	
Sex				<0.001
Male	82 (41.0%)	37 (26.2%)	45 (76.2%)	
Female	118 (59.0%)	104 (73.7%)	14 (23.7%)	
Age (years)				0.001
Mean \pm SD	65.0 \pm 12.6	66.9 \pm 12.9	60.5 \pm 10.6	
Alcohol drinking				<0.001
Never	121 (60.5%)	98 (69.5%)	23 (38.9%)	
Current/ former	79 (39.5%)	43 (30.4%)	36 (61.0%)	
Lesion site				0.11
Tongue	67 (33.5%)	52 (36.8%)	15 (25.4%)	
Other sites	133 (66.5%)	89 (63.1%)	44 (74.5%)	
Course of treatment				0.73
Resection	129 (64.5%)	92 (65.2%)	37 (62.7%)	
Observation	71 (35.5%)	49 (34.7%)	22 (37.2%)	
Follow-up period (months)				0.86
Mean \pm SD	55.4 \pm 58.6	55.9 \pm 57.6	54.3 \pm 61.5	
Recurrence after resection				0.72
Yes	22 (17.0%)	15 (16.3%)	7 (18.9%)	
No	107 (82.9%)	77 (83.6%)	30 (81.0%)	
Malignant transformation				0.15
Yes (mean time \pm SD, months)	15 (7.5%) (66.5 \pm 70.5)	13 (9.2%) (59.8 \pm 63.5)	2 (3.3%) (109 \pm 130)	
No	185 (92.5%)	128 (90.7%)	57 (96.6%)	

SD, standard deviation.

<https://doi.org/10.1371/journal.pone.0250359.t001>

smokers; the remaining 59 patients (29.5%) were smokers. The mean age at diagnosis was higher in non-smoking patients with OL than in smoking patients with OL (66.9 vs. 60.5 years, respectively). The non-smoking group comprised mainly women (73.7% vs. 23.7%, respectively). The proportion of non-drinkers was higher in the non-smoking group than in the smoking group (69.5% vs. 38.9%, respectively). There were no differences in lesion site, treatment course, follow-up period, recurrence, or malignant transformation, according to smoking status.

OED and PD-L1, CD163, and CD8 expression

Among the 141 patients in the non-smoking group, 93 (65.9%) had low-grade OED and 48 (34.0%) had high-grade OED; among the 59 patients in the smoking group, 39 (66.1%) had low-grade OED and 20 (33.8%) had high-grade OED (Table 2). No significant differences were observed between OED and smoking status.

Immunohistochemical analysis was performed to investigate PD-L1, CD163, and CD8 expression in the OL microenvironment (Fig 1). Isotype control sections did not show any non-specific staining (S1 Fig).

In the non-smoking group, PD-L1 expression was negative in 92 cases (65.2%) and positive in 49 (34.7%) cases. The mean (\pm standard deviation) number of subepithelial CD163+ and CD8+ cells was 1110.9 ± 944.6 and 1292.0 ± 1615.0 , respectively (S2 Fig). In the smoking group, PD-L1 expression was negative in 51 cases (86.4%) and positive in 8 cases (13.5%). The mean (\pm standard deviation) number of subepithelial CD163+ and CD8+ cells was 824.8 ± 760.4 and 927.1 ± 1091.2 , respectively (S2 Fig). OL was associated with significantly higher PD-L1 expression and increased numbers of subepithelial CD163+ cells in the non-smoking group compared with the smoking group ($P = 0.002$ and $P = 0.04$, respectively).

Five-year cumulative malignant transformation rates

The 5-year cumulative malignant transformation rates of various clinicopathological factors were determined according to smoking status (Table 3). Non-smoking patients with OL had a higher malignancy incidence rate than smoking patients with OL (9.3% vs. 3.0%; 95% confidence interval [CI]: 4.5–18.8 and 0.4–21.5, respectively). A further stratification analysis according to smoking status and extracted clinicopathological characteristics was performed. For almost all subgroups except those with lesion sites other than the tongue, those who underwent resection, and those with subepithelial CD163+ cell counts below the median, the 5-year

Table 2. Oral epithelial dysplasia and immune markers according to smoking status.

	Total (n = 200)	Non-smoker (n = 141)	Smoker (n = 59)	P-value
Oral epithelial dysplasia				0.98
Low-grade	132 (66.0%)	93 (65.9%)	39 (66.1%)	
High-grade	68 (34.0%)	48 (34.0%)	20 (33.8%)	
PD-L1 expression				0.002
Negative	143 (71.5%)	92 (65.2%)	51 (86.4%)	
Positive	57 (28.5%)	49 (34.7%)	8 (13.5%)	
Subepithelial CD163+ cell count (/mm ²)				0.04
Mean \pm SD	1026.5 ± 901.8	1110.9 ± 944.6	824.8 ± 760.4	
Subepithelial CD8+ cell count (/mm ²)				0.11
Mean \pm SD	1184.3 ± 1486.5	1292.0 ± 1615.0	927.1 ± 1091.2	

SD, standard deviation.

<https://doi.org/10.1371/journal.pone.0250359.t002>

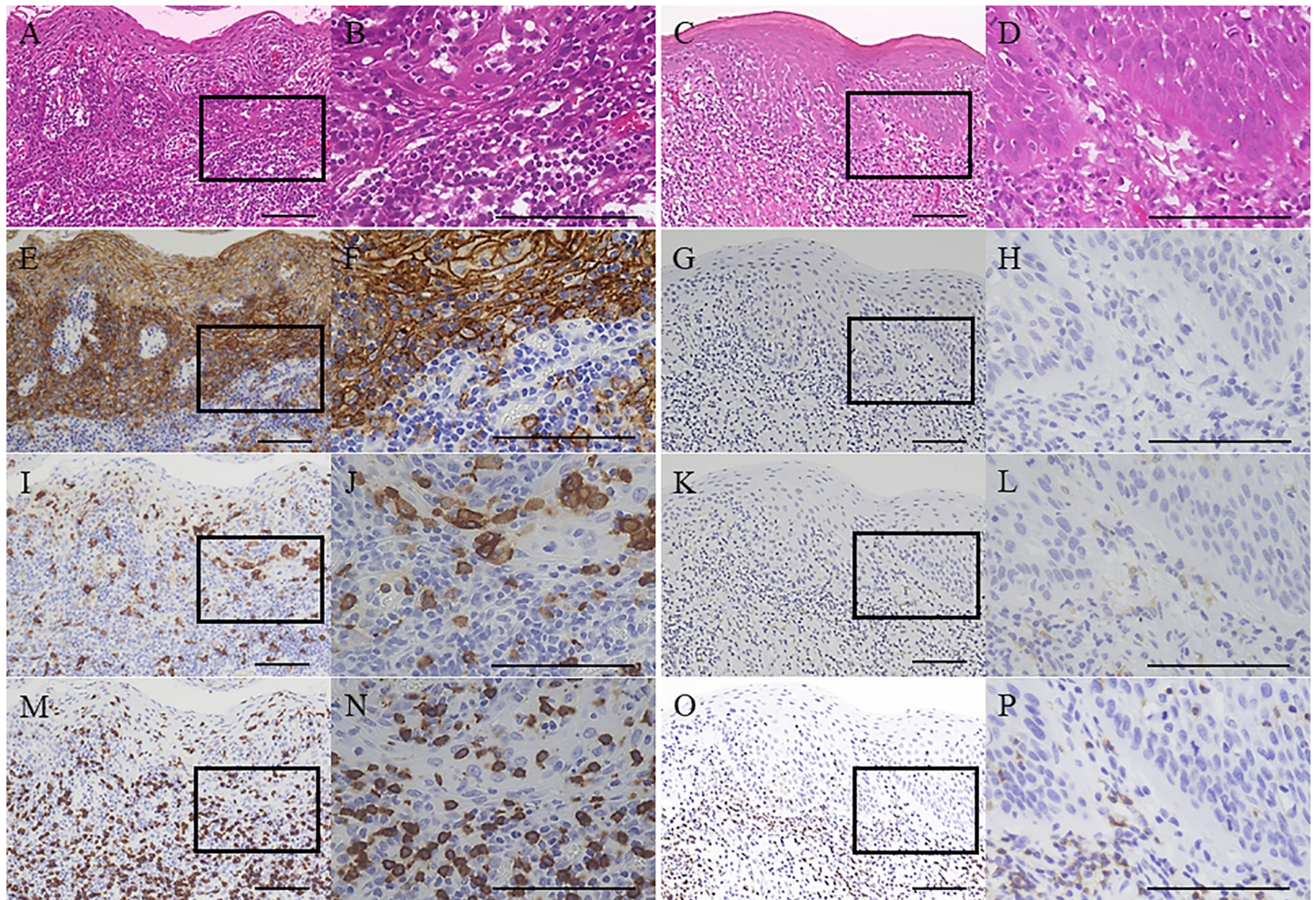


Fig 1. Representative images of immunohistochemical analysis of programmed death-ligand 1 (PD-L1), CD163, and CD8 expression. Hematoxylin and eosin staining of oral leukoplakia (OL) tissue from a non-smoking patient (A, B) and OL tissue from a smoking patient (C, D) showed high-grade oral epithelial dysplasia (OED). PD-L1 staining of OL tissue from a non-smoking patient (E, F) demonstrated strong PD-L1 expression in the overlying epithelium and subepithelial cells. In contrast, PD-L1 staining of OL tissue from a smoking patient (G, H) indicated negative PD-L1 expression in the overlying epithelium and subepithelial cells. CD163 staining of OL tissue from a non-smoking patient (I, J) and OL tissue from a smoking patient (K, L) showed average subepithelial CD163+ cell counts of 3523.3/mm² and 66.6/mm², respectively. CD8 staining of OL tissue from a non-smoking patient (M, N) and OL tissue from a smoking patient (O, P) showed average subepithelial CD8+ cell counts of 4556.0/mm² and 380.0/mm², respectively. Original magnification, $\times 100$ (A, C, E, G, I, K, M, O) and $\times 400$ (B, D, F, H, J, L, N, P). Rectangles in (A, C, E, G, I, K, M, O) indicate the areas from where images (B, D, F, H, J, L, N, P) originated. All scale bars denote 100 μm .

<https://doi.org/10.1371/journal.pone.0250359.g001>

cumulative malignant transformation rates were higher in non-smoking patients with OL than in smoking patients with OL.

Risk factors for malignant transformation according to smoking status

Associations between clinicopathological factors and malignant transformation were evaluated for each subgroup using the Cox proportional hazards model according to smoking status (Table 4). Univariate analysis of non-smoking patients with OL showed that lesion site (tongue), treatment course (observation), high-grade OED, positive PD-L1 expression, and elevated subepithelial CD163+ cell count were significantly associated with malignant transformation. These factors were subsequently included in the multivariate analysis. Non-smoking patients with OL who underwent resection had a statistically significant lower risk of malignant transformation than those managed by observation (hazard ratio [HR], 0.19; 95%

Table 3. Five-year cumulative rate of malignant transformation according to smoking status.

	Non-smoker, % (95% CI)	Smoker, % (95% CI)
Overall	9.3 (4.5–18.8)	3.0 (0.4–21.5)
Sex		
Male	19.8 (7.1–55.3)	3.7 (0.5–26.2)
Female	6.0 (2.2–16.3)	0
Age (years)		
≤65	8.6 (2.7–27.2)	4.7 (0.6–33.8)
> 65	9.7 (3.9–24.0)	0
Alcohol drinking		
Never	6.3 (2.3–16.8)	0
Current/former	17.7 (6.2–50.3)	5.2 (0.7–37.3)
Lesion site		
Tongue	18.8 (8.3–42.7)	0
Other sites	4.0 (1.0–16.3)	4.3 (0.6–30.8)
Course of treatment		
Resection	2.2 (0.7–12.5)	4.3 (0.6–30.8)
Observation	25.2 (10.9–58.3)	0
Oral epithelial dysplasia		
Low-grade	2.0 (0.2–14.4)	0
High-grade	21.8 (10.2–46.3)	10.0 (1.4–70.9)
PD-L1 expression		
Negative	4.9 (1.5–16.3)	3.5 (0.5–25.3)
Positive	17.3 (7.1–41.9)	0
Subepithelial CD163+ cell count		
≤ median	0	3.8 (0.5–27.3)
> median	19.3 (9.4–39.6)	0
Subepithelial CD8+ cell count		
≤ median	0.5 (1.2–20.8)	0
> median	13.6 (6.0–30.9)	9.0 (1.2–64.5)

CI, confidence interval.

<https://doi.org/10.1371/journal.pone.0250359.t003>

CI: 0.05–0.77). High-grade OED and positive PD-L1 expression were also independent risk factors for malignant transformation in non-smoking patients with OL (HR, 2.37 and 5.42; 95% CI: 1.06–5.30 and 1.17–25.0, respectively). Conversely, no significant risk factors were associated with malignant transformation in smoking patients with OL.

Combined effect of smoking status and PD-L1 expression on malignant transformation

The combined effect of smoking status and PD-L1 expression on malignant transformation was visualized using Nelson–Aalen plots (Fig 2). Non-smoking patients with positive PD-L1 expression (represented by the solid gray line) had a higher cumulative malignant transformation rate than those in the other three groups. The mean malignant-free survival times and HRs were calculated to assess the combined effect of smoking status and PD-L1 expression on malignant transformation (Table 5). HRs were calculated for the entire cohort. Non-smoking patients with positive PD-L1 expression were associated with a 6.97-fold (95% CI: 2.14–22.7) increased risk of malignant transformation and a significantly shorter time to malignant

Table 4. Cox proportional hazards analysis of malignant transformation risk factors according to smoking status.

Factors	Non-smoker				Smoker			
	Univariate		Multivariate		Univariate		Multivariate	
	HR (95% CI)	P-value	HR (95% CI)	P-value	HR (95% CI)	P-value	HR (95% CI)	P-value
Sex (male vs female) *	2.15 (0.68–6.81)	0.19			NA	NA		
Age (>65 vs ≤65) *	0.97 (0.93–1.02)	0.36			1.00 (0.88–1.15)	0.90		
Alcohol consumption (current/ former vs never) *	1.70 (0.65–4.44)	0.27			1.67 (0.11–23.8)	0.70		
Lesion site (tongue vs other sites) *	3.22 (1.04–9.97)	0.04	1.03 (0.27–3.87)	0.95	1.07 (0.05–21.0)	0.96		
Course of treatment (resection vs observation) *	0.32 (0.10–0.98)	0.04	0.19 (0.05–0.77)	0.02	NA	NA		
Oral epithelial dysplasia (high-grade vs low-grade) *	15.9 (2.04–124)	0.008	2.37 (1.06–5.30)	0.03	2.14 (0.13–34.3)	0.59		
PD-L1 expression (positive vs negative) *	5.79 (1.56–21.4)	0.009	5.42 (1.17–25.0)	0.03	NA	NA		
Subepithelial CD163+ cell count	1.00 (1.00–1.001)	0.04	5.69 (0.66–48.4)	0.11	1.00 (0.99–1.003)	0.91		
Subepithelial CD8+ cell count	1.00 (0.99–1.0004)	0.13			0.99 (0.99–1.002)	0.90		

HR, hazard ratio; CI, confidence interval

*, test vs. reference; NA, not applicable.

<https://doi.org/10.1371/journal.pone.0250359.t004>

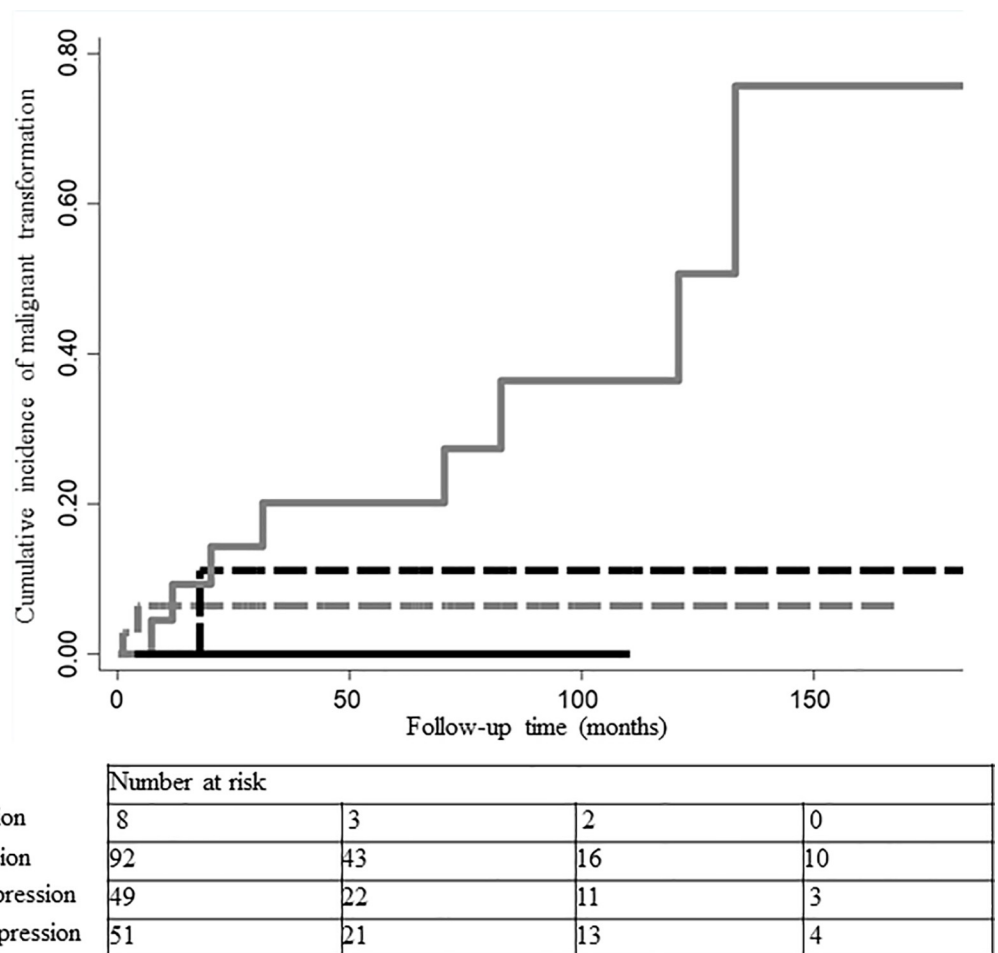


Fig 2. Nelson-Aalen plots of cumulative malignant transformation rates according to smoking status and PD-L1 expression. Smoking patients with positive PD-L1 expression are represented by the solid black line and smoking patients with negative PD-L1 expression by the dashed black line. Non-smoking patients with positive PD-L1 expression are represented by the solid gray line and non-smoking patients with negative PD-L1 expression by the dashed gray line. Non-smoking patients with positive PD-L1 expression had a higher cumulative malignant transformation rate than those in the other three groups.

<https://doi.org/10.1371/journal.pone.0250359.g002>

Table 5. Combined effect of smoking status and PDL-1 expression on malignant progression.

	Non-smoker		Smoker	
	PD-L1(-)	PD-L1(+)	PD-L1(-)	PD-L1(+)
Mean malignant-free survival time, months (95% CI)	207 (196–218)	137 (109–166)	204 (189–219)	NA
Hazard Ratio (95% CI)	0.39 (0.12–1.24) *	6.97 (2.14–22.7) *	0.38 (0.08–1.77) *	NA*
P-value	0.09*	<0.001*	0.17*	NA*

CI, confidence interval

*, vs. the others in entire cohort; NA, not applicable.

<https://doi.org/10.1371/journal.pone.0250359.t005>

transformation (mean malignant-free survival time, 137 [95% CI: 109–166] months; $P < 0.001$) than the other groups. Lesions in non-smoking and smoking patients with negative PD-L1 expression were not significantly associated with malignant transformation ($P = 0.09$ and $P = 0.17$, respectively). Lesions in smoking patients with positive PD-L1 expression were too few to analyze.

Discussion

This study examined the clinicopathological characteristics, PD-L1 positivity, and number of subepithelial CD163+ TAMs and CD8+ cells/lymphocytes in the microenvironment of OPMDs according to smoking status. The non-smoking group with OL was 6 years older and had higher proportions of female and non-drinking patients. Although there was no significant difference in OED grade according to smoking status, the 5-year cumulative malignant transformation rate of OL was higher in non-smoking patients than in smoking patients (9.3% vs. 3.0%, respectively). Previous studies [11–15] found that non-smoking patients with OL had different clinical characteristics and a higher risk of malignant transformation than smoking patients with OL. Our study also supports these findings.

Prior to this study, we hypothesized that smoking patients with OL would be more likely to be immunosuppressed than non-smoking patients because chemicals in tobacco smoke cause chronic inflammation in the oral mucosa, which contributes to an immunosuppressive microenvironment. However, beyond our expectations, OL was associated with significantly higher PD-L1 expression and increased numbers of subepithelial CD163+ cells in the non-smoking group compared with the smoking group. Our data showed that the clinical manifestation of OL was delayed by approximately 6 years in non-smoking patients compared with smoking patients. However, once OL occurs in non-smoking patients, an immunosuppressive microenvironment is likely to have already been established through activation of the PD-1/PD-L1 pathway and recruitment of CD163+ TAMs. Furthermore, considering that non-smoking patients with OSCC had a significantly higher proportion of PD-L1-positive cells than smoking patients [19, 20], the PD-1/PD-L1 pathway may be involved in the initiation phase as well as the transformation phase of oral carcinogenesis in non-smoking patients. This retrospective cohort study is one of the first studies to report that patients with OL had a different microenvironment according to smoking status. The elucidation of the mechanism and role of PD-L1 and CD163 expression in OL requires further investigation.

The results of the multivariate Cox regression analysis performed in non-smoking patients showed that PD-L1 expression was significantly associated with malignant transformation (HR, 5.00; 95% CI: 1.02–24.4). We performed a further stratification analysis in the entire cohort to evaluate the combined effect of smoking status and PD-L1 expression on malignant transformation. Lesions in non-smoking patients with positive PD-L1 expression were not only at a significantly elevated risk of malignant transformation, but also progressed to cancer

more rapidly. In other words, when OL with PD-L1 positivity is detected in non-smoking patients, it may have already progressed to more advanced stages of oral carcinogenesis than in OL patients with other combinations of smoking status and PD-L1 expression.

The main purpose of identifying OPMDs is to prevent their malignant transformation. The treatment course from careful observation to surgical intervention is usually determined by assessing the malignant potential on the basis of various clinicopathological risk factors, such as size, clinical type (homogeneous vs. heterogeneous), and OED grade. With regard to treatment, some studies [22, 43] suggested that surgery significantly reduced the risk of cancer development. However, other studies [11, 44–46] have shown that surgical interventions do not play a significant role in preventing cancer development. Currently, there are no specific guidelines for the treatment of OPMDs. Our study emphasizes the need for clinicians to consider smoking history and PD-L1 expression in the management of OPMDs. Non-smoking patients with PD-L1-positive lesions may be advised to undergo more aggressive treatment and more intensive follow-up. In addition, immunological approaches to inhibiting the PD-1/PD-L1 pathway may represent a novel treatment modality for preventing the malignant transformation of OPMDs in non-smoking patients.

This study shares the same limitations as previous retrospective cohort studies: selection bias, recall bias, and length of follow-up. Other limitations stem from the self-reported nature of the smoking data and the disregard of the effects of smoking cessation. While our study reported a higher risk of malignant transformation in non-smoking patients with OL than in smoking patients with OL, we have routinely advised smoking patients to cease smoking. However, in this retrospective study, we extracted smoking history at the date of diagnosis and did not consider how many patients may have ceased smoking, that is, the effects of smoking cessation. Smoking cessation results in a reduction in the malignant transformation rates of smoking-related lesions. If a large number of smoking patients had successfully ceased smoking, this could be one of the factors that led to a reduction in the risk of cancer progression in smoking patients with OL. Whether non-smoking patients with OL are really at a higher risk of cancer progression needs to be examined further, along with the effects of smoking cessation, in a future prospective study.

Our study suggests that the risk of malignant transformation is higher in non-smoking patients with OL than in smoking patients with OL (5-year cumulative malignant transformation rate: 9.3% vs. 3.0%, respectively). However, we should not misunderstand the preventative effects of smoking on the malignant transformation of OL. The prevalence of OL is much higher in smoking patients than in non-smoking patients (17.9% vs. 3.9%, respectively) [47–50]. Taken together, our data and these studies suggest that non-smoking patients are less likely to develop OL than smoking patients. However, once OL occurs in non-smoking patients, it is associated with a higher risk of malignant transformation. Tobacco smoking is one of the highest risk factors for oral cancer development, regardless of whether it begins as OL or not [15].

Conclusions

In non-smoking patients, OL was associated with significantly higher PD-L1 expression and a greater proportion of CD163+ subepithelial cells, which suggests that the OL microenvironment differs according to smoking status. Furthermore, non-smoking OL patients with positive PD-L1 expression were significantly associated with malignant transformation. A combination of smoking status and PD-L1 expression may predict the malignant transformation of OL. This study highlights the importance of understanding the interaction between smoking and the microenvironment in OL.

Supporting information

S1 Fig. Isotype controls for PD-L1, CD163, and CD8 immunohistochemical staining. Isotype control sections for PD-L1 (A), CD163 (B), and CD8 (C) immunohistochemistry did not show any non-specific staining.
(TIF)

S2 Fig. Column scatter graphs of subepithelial CD163+ and CD8+ cell counts according to smoking status. The non-smoking group showed significantly increased numbers of subepithelial CD163+ cells compared with the smoking group ($P = 0.04$) (A). There was no significant difference in subepithelial CD8+ cell count between the non-smoking and smoking groups ($P = 0.11$) (B).
(TIF)

S1 Table. Study data.
(XLSX)

Acknowledgments

We are grateful to Dr. Kinta Hatakeyama for collaborating during the early stages of this work. We thank H. Nikki March, PhD, Edanz Group (<https://en-author-services.edanz.com/ac>) for editing a draft of this manuscript.

Author Contributions

Conceptualization: Tadaaki Kirita.

Data curation: Naoki Funayama, Mitsuhiko Imada.

Formal analysis: Takahiro Yagyuu.

Funding acquisition: Takahiro Yagyuu, Tadaaki Kirita.

Investigation: Takahiro Yagyuu, Naoki Funayama.

Methodology: Takahiro Yagyuu, Tadaaki Kirita.

Project administration: Takahiro Yagyuu, Tadaaki Kirita.

Resources: Naoki Funayama, Mitsuhiko Imada.

Software: Takahiro Yagyuu, Naoki Funayama, Mitsuhiko Imada.

Supervision: Tadaaki Kirita.

Validation: Tadaaki Kirita.

Visualization: Naoki Funayama, Mitsuhiko Imada.

Writing – original draft: Takahiro Yagyuu, Naoki Funayama.

Writing – review & editing: Takahiro Yagyuu, Tadaaki Kirita.

References

1. Reibel J, Gale N, Hille J, Hunt JL, Lingen M, Muller S, et al. Oral potentially malignant disorders and oral epithelial dysplasia. In: El-Naggar AK, Chan JKC, Grandis JR, Takata T, Slootweg P, editors. WHO classification of head and neck tumours. 4th ed, Lyon: IARC; 2017, p. 112–5.
2. Warnakulasuriya S. Oral potentially malignant disorders: A comprehensive review on clinical aspects and management. *Oral Oncol* 2020; 102:104550. <https://doi.org/10.1016/j.oraloncology.2019.104550> PMID: 31981993

3. Warnakulasuriya S, Ariyawardana A. Malignant transformation of oral leukoplakia: a systematic review of observational studies. *J Oral Pathol Med* 2016; 45(3):155–66. <https://doi.org/10.1111/jop.12339> PMID: 26189354
4. Loftus ER, Baric JM, Kapur KK, Chauncey HH. Cigarette smoking and oral leukoplakia in healthy males. *Spec Care Dentist* 1981; 1(5):206–10. <https://doi.org/10.1111/j.1754-4505.1981.tb01254.x> PMID: 6974903
5. Evstifeeva TV, Zaridze DG. Nass use, cigarette smoking, alcohol consumption and risk of oral and oesophageal precancer. *Eur J Cancer B Oral Oncol* 1992; 28B(1):29–35. [https://doi.org/10.1016/0964-1955\(92\)90008-o](https://doi.org/10.1016/0964-1955(92)90008-o) PMID: 1422467
6. Hashibe M, Sankaranarayanan R, Thomas G, Kuruvilla B, Mathew B, Somanathan T, et al. Alcohol drinking, body mass index and the risk of oral leukoplakia in an Indian population. *Int J Cancer* 2000; 88(1):129–34. PMID: 10962450
7. Banoczy J, Gintner Z, Dombi C. Tobacco use and oral leukoplakia. *J Dent Educ* 2001; 65:322–7. PMID: 11336117
8. Lee CH, Ko YC, Huang HL, Chao YY, Tsai CC, Shieh TY, et al. The precancer risk of betel quid chewing, tobacco use and alcohol consumption in oral leukoplakia and oral submucous fibrosis in southern Taiwan. *Br J Cancer* 2003; 88(3):366–72. <https://doi.org/10.1038/sj.bjc.6600727> PMID: 12569378
9. Dietrich T, Reichart PA, Scheifele C. Clinical risk factors of oral leukoplakia in a representative sample of the US population. *Oral Oncol* 2004; 40(2):158–63. [https://doi.org/10.1016/s1368-8375\(03\)00145-3](https://doi.org/10.1016/s1368-8375(03)00145-3) PMID: 14693239
10. Yang T, Li F, Yang X, Wu Z, Feng X, Wang Y, et al. Smoking patterns and sociodemographic factors associated with tobacco use among Chinese rural male residents: a descriptive analysis. *BMC Public Health*. 2008; 8: 248. <https://doi.org/10.1186/1471-2458-8-248> PMID: 18644139
11. Einhorn J, Wersall J. Incidence of oral carcinoma in patients with leukoplakia of the oral mucosa. *Cancer* 1967; 20(12):2189–93. [https://doi.org/10.1002/1097-0142\(196712\)20:12<2189::aid-cncr2820201218>3.0.co;2-m](https://doi.org/10.1002/1097-0142(196712)20:12<2189::aid-cncr2820201218>3.0.co;2-m) PMID: 6073896
12. Roed-Petersen B. Cancer development in oral leukoplakia. Follow-up of 331 patients. *J Dent Res* 1971; 50:711.
13. Silverman S Jr, Gorsky M, Lozada F. Oral leukoplakia and malignant transformation. A follow-up study of 257 patients. *Cancer* 1984; 53(3):563–8. [https://doi.org/10.1002/1097-0142\(19840201\)53:3<563::aid-cncr2820530332>3.0.co;2-f](https://doi.org/10.1002/1097-0142(19840201)53:3<563::aid-cncr2820530332>3.0.co;2-f) PMID: 6537892
14. Schepman KP, van der Meij EH, Smeele LE, van der Waal I. Malignant transformation of oral leukoplakia: a follow-up study of a hospital-based population of 166 patients with oral leukoplakia from The Netherlands. *Oral Oncol* 1998; 34(4):270–5. PMID: 9813722
15. Morse DE, Psoter WJ, Cleveland D, Cohen D, Mohit-Tabatabai M, Kosis DL, et al. Smoking and drinking in relation to oral cancer and oral epithelial dysplasia. *Cancer Causes Control* 2007; 18(9):919–29. <https://doi.org/10.1007/s10552-007-9026-4> PMID: 17647085
16. Kawakita D, Hosono S, Ito H, Oze I, Watanabe M, Hanai N, et al. Impact of smoking status on clinical outcome in oral cavity cancer patients. *Oral Oncol* 2012; 48(2):186–91. <https://doi.org/10.1016/j.oraloncology.2011.09.012> PMID: 21996543
17. Lee SU, Moon SH, Choi SW, Cho KH, Park JY, Jung YS, et al. Prognostic significance of smoking and alcohol history in young age oral cavity cancer. *Oral Dis* 2020; 26(7):1440–48. <https://doi.org/10.1111/odi.13432> PMID: 32430951
18. Megan L, Durr MD, David Li MD, Steven J, Wang MD. Oral cavity squamous cell carcinoma in never smokers: Analysis of clinicopathologic characteristics and survival. *Am J Otolaryngol* 2013; 34(5):388–93. <https://doi.org/10.1016/j.amjoto.2013.01.017> PMID: 23540889
19. Desrichard A, Kuo F, Chowell D, Lee KW, Riaz N, Wong RJ, et al. Tobacco smoking-associated alterations in the immune microenvironment of squamous cell carcinomas. *J Natl Cancer Inst* 2018; 110:1386–92. <https://doi.org/10.1093/jnci/djy060> PMID: 29659925
20. de la Iglesia JV, Slebos RJC, Martin-Gomez L, Wang X, Teer JK, Tan AC, et al. Effects of Tobacco Smoking on the Tumor Immune Microenvironment in Head and Neck Squamous Cell Carcinoma. *Clin Cancer Res* 2020; 26(6):1474–85. <https://doi.org/10.1158/1078-0432.CCR-19-1769> PMID: 31848186
21. Jones LM, Broz ML, Ranger JJ, Ozcelik J, Ahn R, Zuo D, et al. Stat3 establishes an immunosuppressive microenvironment during the early stages of breast carcinogenesis to promote tumor growth and metastasis. *Cancer Res* 2016; 76(6):1416–28. <https://doi.org/10.1158/0008-5472.CAN-15-2770> PMID: 26719528
22. Yagyu T, Hatakeyama K, Imada M, Kurihara M, Matsusue Y, Yamamoto K, et al. Programmed death ligand 1 (PD-L1) expression and tumor microenvironment: Implications for patients with oral

- precancerous lesions. *Oral Oncol* 2017; 68:36–43. <https://doi.org/10.1016/j.oraloncology.2017.03.006> PMID: 28438290
23. Bondy SJ, Victor JC, Diemert LM. Origin and use of the 100 cigarette criterion in tobacco surveys. *Tob Control* 2009; 18(4):317–23. <https://doi.org/10.1136/tc.2008.027276> PMID: 19491091
 24. Lim K, Moles DR, Downer MC, Speight PM. Opportunistic screening for oral cancer and precancer in general dental practice: results of a demonstration study. *Br Dent J* 2003; 194(9):497–502. <https://doi.org/10.1038/sj.bdj.4810069> PMID: 12835785
 25. Allen NE, Beral V, Casabonne D, Kan SW, Reeves GK, Brown A, et al. Moderate alcohol intake and cancer incidence in women. *J Natl Cancer Inst* 2009; 101(5):296–305. <https://doi.org/10.1093/jnci/djn514> PMID: 19244173
 26. Rock LD, Rosin MP, Zhang L, Chan B, Shariati B, Laronde DM. Characterization of epithelial oral dysplasia in non-smokers: First step towards precision medicine. *Oral oncol* 2018; 78:119–25. <https://doi.org/10.1016/j.oraloncology.2018.01.028> PMID: 29496039
 27. Sato E, Olson SH, Ahn J, Bundy B, Nishikawa H, Qian F, et al. Intraepithelial CD8+ tumor-infiltrating lymphocytes and a high CD8+/regulatory T cell ratio are associated with favorable prognosis in ovarian cancer. *Proc Natl Acad Sci USA* 2005; 102(51):18538–43. <https://doi.org/10.1073/pnas.0509182102> PMID: 16344461
 28. Fabriek BO, Christine DD, van den Berg TK. The macrophage scavenger receptor CD163. *Immunobiology* 2005; 210(2–4):153–60. <https://doi.org/10.1016/j.imbio.2005.05.010> PMID: 16164022
 29. Bingle L, Brown NJ, Lewis CE. The role of tumour-associated macrophages in tumour progression: implications for new anticancer therapies. *J Pathol* 2002; 196(3):254–65. <https://doi.org/10.1002/path.1027> PMID: 11857487
 30. Mantovani A, Sozzani S, Locati M, Allavena P, Sica A. Macrophage polarization: tumor-associated macrophages as a paradigm for polarized M2 mononuclear phagocytes. *Trends Immunol* 2002; 23(11):549–55. [https://doi.org/10.1016/s1471-4906\(02\)02302-5](https://doi.org/10.1016/s1471-4906(02)02302-5) PMID: 12401408
 31. Pollard JW. Tumour-educated macrophages promote tumour progression and metastasis. *Nat Rev Cancer* 2004; 4(1):71–8. <https://doi.org/10.1038/nrc1256> PMID: 14708027
 32. Kurahara H, Shinchi H, Mataka Y, Maemura K, Noma H, Kubo F, et al. Significance of M2-polarized tumor-associated macrophage in pancreatic cancer. *J Surg Res* 2011; 167(2):e211–9. <https://doi.org/10.1016/j.jss.2009.05.026> PMID: 19765725
 33. Fujii N, Shomori K, Shiomi T, Nakabayashi M, Takeda C, Ryoke K, et al. Cancer-associated fibroblasts and CD163-positive macrophages in oral squamous cell carcinoma: their clinicopathological and prognostic significance. *J Oral Pathol Med* 2012; 41(6):444–51. <https://doi.org/10.1111/j.1600-0714.2012.01127.x> PMID: 22296275
 34. Mori K, Haraguchi S, Hiori M, Shimada J, Ohmori Y. Tumor-associated macrophages in oral premalignant lesions coexpress CD163 and STAT1 in a Th1-dominated microenvironment. *BMC Cancer* 2015; 15:573. <https://doi.org/10.1186/s12885-015-1587-0> PMID: 26242181
 35. Clark Jr WH, Elder DE, Guerry D 4th, Braitman LE, Trock BJ, Schultz D, et al. Model predicting survival in stage I melanoma based on tumor progression. *J Natl Cancer Inst* 1989; 81(24):1893–90. <https://doi.org/10.1093/jnci/81.24.1893> PMID: 2593166
 36. Zhang L, Conejo-Garcia JR, Katsaros D, Gimotty PA, Massobrio M, Regnani G, et al. Intratumoral T cells, recurrence, and survival in epithelial ovarian cancer. *N Engl J Med* 2003; 348(3):203–13. <https://doi.org/10.1056/NEJMoa020177> PMID: 12529460
 37. Hamanishi J, Mandai M, Iwasaki M, Okazaki T, Tanaka Y, Yamaguchi K, et al. Programmed cell death 1 ligand 1 and tumor-infiltrating CD8+ T lymphocytes are prognostic factors of human ovarian cancer. *Proc Natl Acad Sci USA* <https://doi.org/10.1073/pnas.0611533104> PMID: 17360651
 38. Schreiber RD, Old LJ, Smyth MJ. Cancer immunoeediting: integrating immunity's roles in cancer suppression and promotion. *Science* 2011; 331(6024):1565–70. <https://doi.org/10.1126/science.1203486> PMID: 21436444
 39. Liu W, Shi LJ, Wu L, Feng JQ, Yang X, Li J, et al. Oral cancer development in patients with leukoplakia—clinicopathological factors affecting outcome. *PLoS One* 2012; 7(4):e34773. <https://doi.org/10.1371/journal.pone.0034773> PMID: 22514665
 40. Andersen PK, Borgan O, Gill RD, Keiding N. Statistical models based on counting processes. New York: Springer-Verlag; 1997.
 41. Collett D. Modelling survival data in medical research. London: Chapman and Hall; 1994:150–237.
 42. Klein JP, Moeschberger ML. Survival analysis techniques for censored and truncated data. New York: Springer-Verlag; 1997:83–400.

43. Kuribayashi Y, Tsushima F, Morita K, Matsumoto K, Sakurai J, Uesugi A, et al. Long-term outcome of non-surgical treatment in patient with oral leukoplakia. *Oral Oncol* 2015; 51(11):1020–5. <https://doi.org/10.1016/j.oraloncology.2015.09.004> PMID: 26410021
44. Vedtofte P, Holmstrup P, Hjorting-Hansen E, Pindborg JJ. Surgical treatment of premalignant lesions of the oral mucosa. *Int J Oral Maxillofac Surg* 1987; 16(6):656–64. [https://doi.org/10.1016/s0901-5027\(87\)80049-8](https://doi.org/10.1016/s0901-5027(87)80049-8) PMID: 3125262
45. Lumerman H, Freedman P, Kerpel S. Oral epithelial dysplasia and the development of invasive squamous cell carcinoma. *Oral Surg Oral Med Oral Pathol Oral Radiol Endod* 1995; 79(3):321–9. [https://doi.org/10.1016/s1079-2104\(05\)80226-4](https://doi.org/10.1016/s1079-2104(05)80226-4) PMID: 7621010
46. Holmstrup P, Vedtofte P, Reibel J, Stoltze K. Long-term treatment outcome of oral premalignant lesions. *Oral Oncol* 2006; 42(5):461–74. <https://doi.org/10.1016/j.oraloncology.2005.08.011> PMID: 16316774
47. International Agency for Research on Cancer. World Health Organization. IARC Monographs on the Evaluation of Carcinogens Risks to Humans: Alcohol Drinking. IARC, Lyon, France 1988; 44: pp.1–8.
48. Shiu MN, Chen THH, Chang SH, Hahn LJ. Risk factors for leukoplakia and malignant transformation to oral carcinoma: a leukoplakia cohort in Taiwan. *Br J Cancer* 2000; 82:1871–4. <https://doi.org/10.1054/bjoc.2000.1208> PMID: 10839305
49. Bokor-Bratic M, Vuckovic N. Cigarette smoking as a risk factor associated with oral leukoplakia. *Arch Oncol* 2002; 10(2):67–70.
50. Sabashvili M, Gigineishvili E, Jikia M, Chitaladze T. Role of Tobacco in the Development of Oral Leukoplakia and Oral Cancer. *Dentistry* 2018; 8(6):1000495.