


Usefulness of ^{18}F -fluorodeoxyglucose positron emission tomography/computed tomography for predicting the prognosis and treatment response of neoadjuvant therapy for pancreatic ductal adenocarcinoma

Takahiro Yokose¹  | Minoru Kitago¹ | Yohji Matsusaka² | Yohei Masugi³ | Masahiro Shinoda¹ | Hiroshi Yagi¹ | Yuta Abe¹ | Go Oshima¹ | Shutaro Hori¹ | Yutaka Endo¹ | Kenji Toyama² | Yu Iwabuchi² | Ryo Takemura⁴ | Ryota Ishii⁴ | Tadaki Nakahara² | Shigeo Okuda² | Masahiro Jinzaki² | Yuko Kitagawa¹

¹Department of Surgery, Keio University School of Medicine, Tokyo, Japan

²Department of Radiology, Keio University School of Medicine, Tokyo, Japan

³Department of Pathology, Keio University School of Medicine, Tokyo, Japan

⁴Biostatistics Unit, Clinical and Translational Research Center, Keio University Hospital, Tokyo, Japan

Correspondence

Minoru Kitago, Department of Surgery, Keio University School of Medicine, Shinanomachi 35, Shinjuku-ku, Tokyo, Japan.

Email: dragonpegasus@keio.jp

Funding information

No specific funding was received.

Abstract

Background: The Response Evaluation Criteria in Solid Tumors (RECIST) for computed tomography (CT) is preoperatively used to evaluate therapeutic effects. However, it does not reflect the pathological treatment response (PTR) of pancreatic ductal adenocarcinoma (PDAC). The Positron Emission Tomography Response Criteria in Solid Tumors (PERCIST) for positron emission tomography (PET)/CT is effective in other cancers. This study aimed to confirm the usefulness of PERCIST and the prognostic utility of PET/CT for PDAC.

Methods: Forty-two consecutive patients with PDAC who underwent neoadjuvant therapy (NAT) and pancreatectomy at our institution between 2014 and 2018 were retrospectively analyzed. We evaluated the treatment response and prognostic significance of PET/CT parameters and other clinicopathological factors.

Results: Twenty-two patients who underwent PET/CT both before and after NAT with the same protocol were included. RECIST revealed stable disease and partial response in 20 and 2 cases, respectively. PERCIST revealed stable metabolic disease, partial metabolic response, and complete metabolic response in 8, 9, and 5 cases, respectively. The PTR was G3, G2, and G1 in 8, 12, and 2 cases, respectively. For comparing the concordance rates between PTR and each parameter, PERCIST (72.7% [16/22]) was significantly superior to RECIST (36.4% [8/22]) ($P = .017$). The area under the curve survival values of PET/CT parameters were 0.777 for metabolic tumor volume (MTV), 0.500 for maximum standardized uptake value, 0.554 for peak standardized uptake value corrected for lean body mass, and 0.634 for total lesion glycolysis. A 50% cut-off value for the MTV reduction rate yielded the largest difference in survival between responders and nonresponders. On multivariate analysis,

MTV reduction rates < 50% were independent predictors for relapse-free survival (hazard ratio [HR], 3.92; $P = .044$) and overall survival (HR, 14.08; $P = .023$).

Conclusions: PERCIST was more accurate in determining NAT's therapeutic effects for PDAC than RECIST. MTV reduction rates were independent prognostic factors for PDAC.

KEYWORDS

MTV, pancreatic ductal adenocarcinoma, PERCIST, PET/CT

1 | INTRODUCTION

Pancreatic ductal adenocarcinoma (PDAC) has a dismal prognosis,¹ despite progress in diagnosis and treatment. PDAC treatment differs depending on whether the patient has a localized primary tumor or distant metastasis. Although surgical resection is the only potential curative treatment for PDAC patients without distant metastasis, the proportion of resectable PDAC at the time of diagnosis is approximately 20%-30%.² Local resectability is determined on radiography, and primary PDAC is defined based on the tumor extent considering vascular involvement as follows: potentially resectable PDAC (R-PDAC), borderline resectable PDAC (BR-PDAC), and unresectable PDAC (UR-PDAC).³

Postoperative adjuvant chemotherapy is the standard treatment for patients with curative resected PDAC, as it improves prognosis.⁴ Furthermore, neoadjuvant therapy (NAT) increases the probability of R0 resection for UR-PDAC and BR-PDAC and performing curative resection improves prognosis.⁵ Among R-PDAC patients, NAT decreased the recurrence rate and improved prognosis.⁶ Additionally, we reported the utility of neoadjuvant chemoradiotherapy (NACRT) for PDAC.⁷⁻⁹

The Response Evaluation Criteria in Solid Tumors (RECIST) guideline¹⁰ is followed for determining the anatomical target's tumor reduction ratio using CT images in order to evaluate treatment effect in many cancers. An abdominal contrast-enhanced CT (CE-CT) is widely used to evaluate the effect of NAT and prediction of resectability of PDAC.¹¹ However, PDAC's treatment effect is not evaluated appropriately using CT,¹² and only 5% of studies used RECIST for PDAC.¹³

¹⁸F-Fluorodeoxyglucose positron emission tomography (¹⁸F-FDG-PET) has advantages over CT because FDG uptake reflects tumor cell viability; moreover, FDG-PET is superior to the RECIST for evaluating the treatment effect in various cancers.^{14,15} The Positron Emission Tomography Response Criteria in Solid Tumors (PERCIST)¹⁶ using FDG-PET to evaluate the treatment effect is useful for some cancers.^{17,18} Some studies have evaluated the changes in the

PET/CT parameters after NAT in PDAC,¹⁹⁻²¹ but only few studies have evaluated the therapeutic effect of NAT using PERCIST.²²

The metabolic tumor volume (MTV) measured on FDG-PET/CT reflects tumor cell activity and is associated with the prognosis of various cancers and locally advanced PDAC.²³⁻²⁵ In addition, MTV changes before and after NAT are prognostic factors in esophagus cancer,²⁶ but to the best of our knowledge, they have not yet been reported as prognostic factors in PDAC patients who underwent NAT followed by surgery.

This study aimed to confirm the usefulness of PERCIST for evaluating the treatment effect based on the pathological treatment response (PTR) and to analyze the prognostic utility of FDG PET/CT parameters in PDAC patients who underwent NAT followed by surgery over a 5-year period at our hospital.

2 | MATERIALS AND METHODS

2.1 | Patients

Sixty-five consecutive patients underwent NAT for PDAC between January 2014 and October 2018 at Keio University Hospital. Inclusion criteria encompassed patients with histologically confirmed PDAC who underwent NAT followed by pancreatectomy. Among the 65 patients, 42 underwent pancreatectomy and were included in this study. Exclusion criteria removed patients who did not undergo FDG PET/CT before or after NAT using the same protocol. Among the 42 patients, 22 underwent both FDG PET/CT and CE-CT before and after NAT using the same protocol. In all 22 patients, tumor resectability was evaluated using CE-CT and FDG PET/CT approximately 2-3 weeks before the initiation of NAT and approximately 2-3 weeks after the completion of NAT, which included three cycles of neoadjuvant chemotherapy (NAC) or one cycle of NACRT. The patients underwent surgery approximately 30 days after NAT.

According to our institutional protocol, two NAT strategies were used: (a) the NACRT regimen comprising a combination of chemotherapy (concurrent TS-1, cisplatin, and

mitomycin) and radiotherapy (planned total dose, 40.0 Gy of external beam radiation therapy [40.0 Gy per 20 fractions])^{7,8} and (b) NAC alone (gemcitabine and nab-paclitaxel).

We conducted this retrospective observational study using the “opt-out” method. The study was approved by the Human Experimentation Committee of our institution (No. 20120443), who waived the requirement for informed consent.

2.2 | RECIST

CE-CT images were retrospectively reviewed by two experienced radiologists (each with more than 8 years of experience in CT analysis) who were blinded to the other imaging results and clinical and histopathological data. Anatomical changes using CE-CT were evaluated as described in RECIST version 1.1¹⁰ as follows: progressive disease (PD), >20% increase in tumor dimensions or the appearance of metastases; stable disease (SD), <30% shrinkage or <20% increase; partial response (PR), >30% decrease; and complete response (CR), complete disappearance of the primary target tumor. According to these categories, patients were considered responders (PR and CR) and nonresponders (PD and SD).

2.3 | FDG PET/CT protocol

FDG PET/CT examinations were performed before the initiation of NAT and after the completion of NAT using the same protocol of the Biograph mCT system (Siemens Medical Solutions USA Inc). Quality assurance and quality control procedures for the PET system were carried out accurately on a daily basis. Patients were instructed to fast for 5 hours before the examinations. Blood glucose levels were measured immediately before the injection of FDG. None of the patients had a blood glucose level > 200 mg/dL. FDG was intravenously injected at a dose of 4.0 MBq/kg of body weight. PET scans were started after the uptake time (60 or 75 minutes), which was the same before and after NAT for each patient. Immediately after performing low-dose plain CT for attenuation correction and anatomic localization, PET scans were obtained from the groin to the head for 120 seconds for each bed position in the three-dimensional mode. The PET images were reconstructed using the three-dimensional ordered subsets expectation maximization method with a 256 × 256 matrix, 3 iterations, 21 subsets, and a Gaussian filter of 6-mm full width at half maximum.

2.4 | PET analysis

FDG PET/CT images were retrospectively reviewed by two experienced nuclear medicine physicians (each with more

than 8 years of experience in oncologic FDG PET/CT) who were blinded to the other imaging results and clinical as well as histopathological data. The commercially available software package GI-PET (AZE Co., Ltd.) was used to objectively assess the treatment response based on PERCIST version 1.0.^{16,17} The maximum standardized uptake value (SUV_{max}) was obtained, defined as the maximum single-voxel intensity in the hypermetabolic lesion. Two parameters, the peak standardized uptake value corrected for lean body mass (SUL_{peak}) and total lesion glycolysis (TLG), were used in PERCIST. The software automatically calculated these parameters within the entire primary tumor when a spherical region of interest (ROI) was drawn to encompass the primary lesion. In brief, the peak standardized uptake value (SUV_{peak}) was calculated in a 1.2-cm-diameter ROI placed on the hottest point of the tumor; the value was then normalized to the SUL_{peak} (SUV_{peak} × [lean body mass]/[total body mass]) matched for Japanese individuals. The SUL_{peak} was also used to determine whether that value for the tumor was > 1.5 times that of the mean liver SUL value + 2 standard deviations (SD); the mean liver SUL value was defined considering a 3-cm-diameter spherical ROI in the normal right lobe of the liver. MTV was defined as an FDG-avid tumor volume with a threshold that is at least 1.5 times greater than the mean liver SUL value ± 2 SD. TLG was calculated as follows: SUL_{mean} × MTV (where SUL_{mean} represents the mean SUL value).

2.5 | PERCIST

The PERCIST considers the percentage change in the SUL_{peak} between the pre- and posttreatment scans²⁴ as follows: progressive metabolic disease (PMD), >30% increase in the SUL_{peak}; stable metabolic disease (SMD), <30% decrease or < 30% increase; partial metabolic response (PMR), >30% decrease; and complete metabolic response (CMR), complete disappearance of the SUL_{peak}. According to these criteria, patients were considered responders (PMR and CMR) and nonresponders (PMD and SMD).

2.6 | Pathological treatment response

The PTR was evaluated using hematoxylin and eosin staining of resected tumor sections; the findings were reviewed by an experienced pathologist who was blinded to the patient treatment and outcomes. Tumor cellularity, ie, the extent ratio of viable residual tumor cells at the primary tumor site, was assessed based on the estimated percentage of viable residual tumor cells compared with the tumor bed.

The PTR was classified into four categories based on the tumor cellularity, according to the College of American Pathologists,²⁷

as follows: Grade 3, poor response defined as > 50% cellularity; Grade 2, moderate response defined as < 50% and > 10% cellularity; Grade 1, marked response defined as < 10% cellularity; and Grade 0, complete response defined as the complete disappearance of the tumor cells. According to these classifications, patients were considered responders (those with PR and CR as well as PMR and CMR with a Grade 0-2; residual cellularity < 50%) and nonresponders (Grade 3).

2.7 | Statistical analysis

Statistical analysis was performed using IBM SPSS statistics version 25.0 (IBM Japan, Tokyo, Japan). The paired *t* test was used to determine whether clinicopathological parameters were significantly different before and after NAT. The concordance rates and sensitivity were compared between PERCIST and RECIST using the McNemar test. The Pearson correlation coefficient was calculated. Paired *t* tests were used to compare the following:

(i) the absolute value of the difference between the tumor diameter change on CT scan before and after treatment and cellularity.

(i) = $|\text{post-NAT tumor size/pre-NAT tumor size} \times 100 (\%) - \text{cellularity} (\%)|$

(ii) the absolute value of the difference between the SULpeak change rate on the PET/CT scan before and after NAT and cellularity.

(ii) = $|\text{post-NAT SULpeak/pre-NAT SULpeak} \times 100 (\%) - \text{cellularity} (\%)|$

The optimal cut-off values for continuous variables were estimated using receiver operating characteristic (ROC) curve analysis with the area under the curve (AUC). Relapse-free survival (RFS) and overall survival (OS) were measured from the date of NAT initiation to the date of recurrence and the date of the last follow-up, respectively. Kaplan–Meier curves for RFS and OS were generated, and comparisons between groups were performed using the log-rank test. Variables with *P*-values < .10 on univariate analysis were entered into a forward, stepwise backward multivariate Cox proportional hazards regression model to identify independent prognostic factors. Inter-rater agreement of evaluation of treatment response between the two readers was analyzed using the Kappa coefficient. All statistical tests were two-tailed, and *P*-values < .05 were considered significant.

3 | RESULTS

3.1 | Patient characteristics

A total of 22 patients underwent PET/CT examination before and after NAT at our hospital (Figure 1). The patient

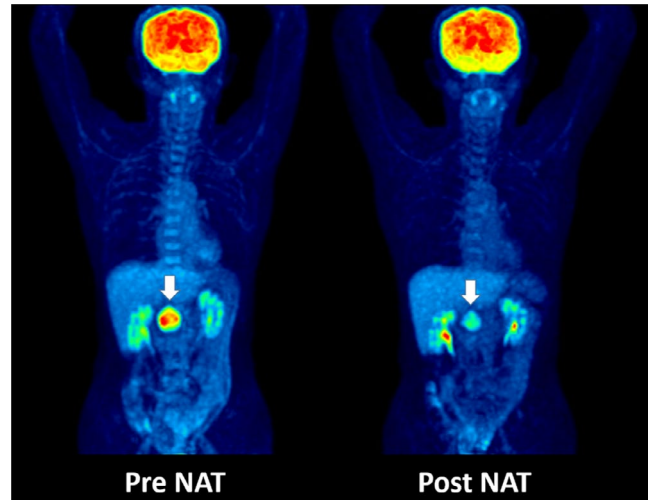


FIGURE 1 Representative FDG PET/CT examination before and after neoadjuvant therapy (NAT) revealed a significant decrease in FDG uptake in the tumor (arrow)

characteristics are shown in Table S1. The median age was 70 years (range, 48–78 years), and the male-to-female ratio was 17:5.

The tumor type was R-PDAC, BR-PDAC, and UR-PDAC in 10, 11, and 1 case, respectively. As preoperative treatment, NACRT was performed in 18 and NAC in 4 cases. R0 resection was performed in 14 cases. The imaging parameters are shown in Table 1 and Figure 2.

3.2 | Comparing the prognostic utility of treatment response parameters

To determine the best indicator for distinguishing responders from nonresponders, AUC was performed for the reduction rate of each parameter; the AUC values for tumor size, SUVmax, SULpeak, MTV, and TLG were 0.478, 0.723, 0.786, 0.576, and 0.661, respectively (Figure 3). Among the 22 patients, the treatment response according to RECIST was PR in 9.1% of patients (2/22) and SD in 90.9% (20/22). In contrast, according to PERCIST, 22.7% (5/22) of patients had CMR, 40.9% (9/22) had PMR, and 36.4% (8/22) had SMD. The PTR was G3 in 36.4% (8/22) of patients, G2 in 54.5% (12/22), and G1 in 9.1% (2/22) (Table 2). Inter-rater agreements of evaluation of treatment response between the two readers were more consistent for PERCIST than RECIST; Kappa coefficients were 1.000 and 0.365, respectively.

For comparing the concordance rates between responders and nonresponders, PERCIST and PTR (72.7% [16/22]) were significantly superior to RECIST and PTR (36.4% [8/22]) (*P* = .017; Table S2). Furthermore, PERCIST was more sensitive for predicting cases with residual cellularity < 50%, observed in 78.6% of patients (11/14), than was RECIST (7.1% [1/14]) (*P* < .001; Table S2).

TABLE 1 Imaging parameters pre- and post-NAT and the reduction rate. P-values were estimated using the paired *t* test

| Parameter | Pre-NAT | Post-NAT | P | Reduction rate | |
|------------|---------------|---------------|-------|----------------|------------|
| | Mean ± SD | | | Median | Range |
| Tumor size | 25.8 ± 6.7 | 22.7 ± 5.5 | .002 | 9.6 | -16.9-38.6 |
| SUVmax | 6.42 ± 2.52 | 4.04 ± 2.05 | <.001 | 38.8 | -31.5-73.3 |
| SULpeak | 4.18 ± 1.59 | 2.43 ± 1.51 | <.001 | 43.2 | -20.0-100 |
| MTV | 14.66 ± 10.98 | 5.37 ± 6.62 | 0.001 | 65.2 | -34.0-100 |
| TLG | 48.04 ± 45.67 | 14.72 ± 21.11 | 0.001 | 64.7 | -13.6-100 |

Abbreviations: MTV, metabolic tumor volume; NAT, neoadjuvant therapy; SULpeak, peak standardized uptake value corrected for lean body mass; SUVmax, maximum standardized uptake value; TLG, total lesion glycolysis.

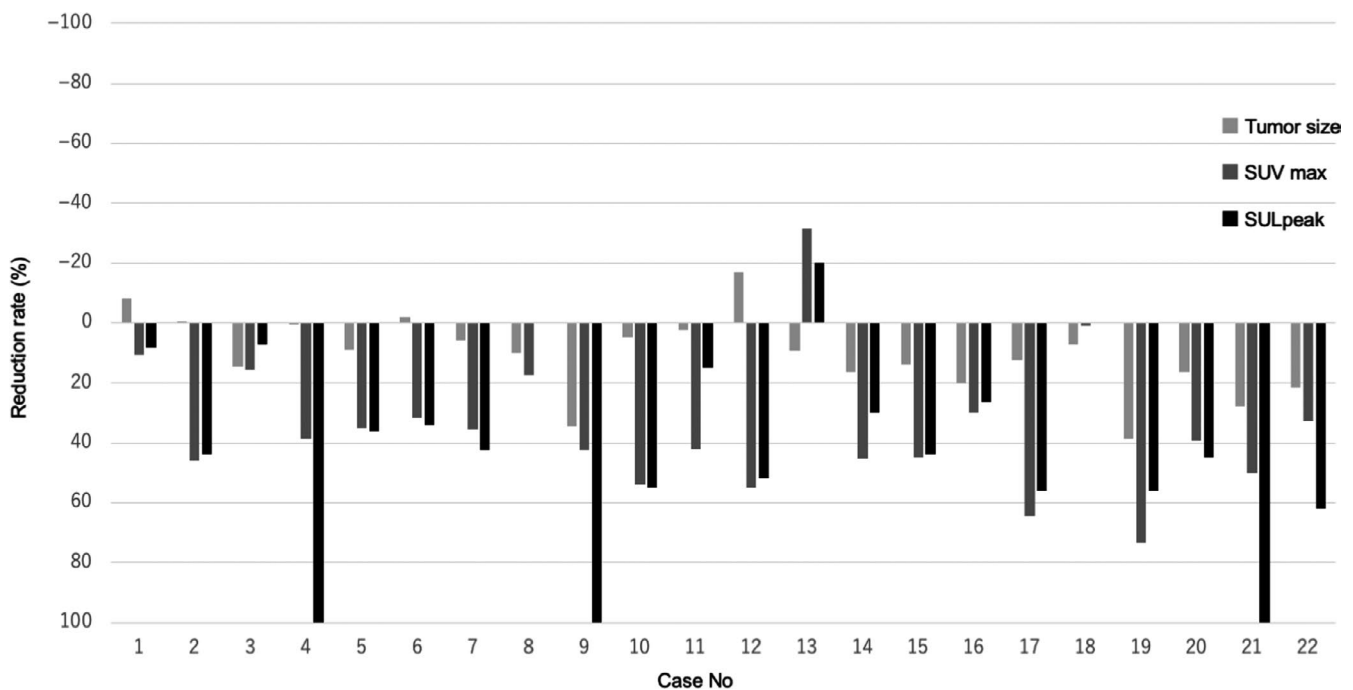


FIGURE 2 Waterfall plot analysis for the reduction rate of each parameter: tumor size, maximum standardized uptake value (SUVmax), and peak standardized uptake value corrected for lean body mass (SULpeak)

The change rate for the tumor size, SUVmax, and SULpeak revealed weak correlations with cellularity ($r = .159$, $r = .454$, and $r = .426$, respectively; Figure S1). On comparing the absolute difference between cellularity and the change rate for each parameter using the paired *t* test, SULpeak (35.96 ± 22.88 [95% confidence interval (CI), 25.81-46.10]) and SUVmax (39.05 ± 23.62 [95% CI, 28.57-49.52]) more accurately reflected cellularity than did RECIST (62.77 ± 26.71 [95% CI, 50.93-74.61]; $P < .001$ and $P = .001$, respectively).

3.3 | Survival analysis

At the time of analysis, 11 patients (50.0%) had recurrence and 8 (36.3%) had died. The median follow-up from the date of NAT initiation was 35.5 months (range, 8.0-54.4 months)

for all 22 patients at the last follow-up. The median OS and RFS were 39.0 months and 22.0 months, respectively.

The cut-off values for reduction rate changes in SUVmax, SULpeak, MTV, and TLG to recurrence and survival were examined using ROC curve analysis. MTV showed good predictive performance for recurrence and survival, consistently better than SUVmax, SULpeak, and TLG. The AUC recurrence and survival values were 0.793 and 0.777 for MTV, 0.463 and 0.500 for SUVmax, 0.558 and 0.554 for SULpeak, and 0.669 and 0.634 for TLG, respectively (Figure 4).

A 50% cut-off value for the MTV reduction rate yielded the largest difference in RFS and OS between responders and nonresponders in the Cox regression analysis (hazard ratio [HR], 3.922, $P = .044$; and HR, 7.092, $P = .068$). Patients with > 50% reduction in MTV showed significantly

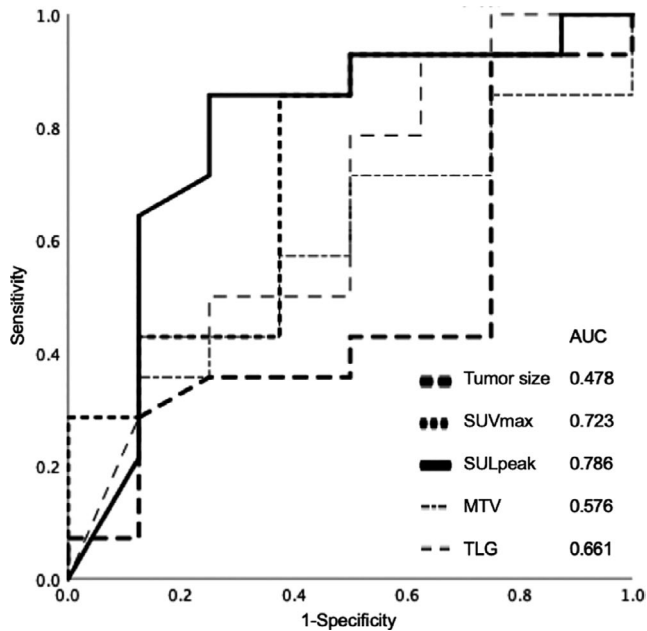


FIGURE 3 Analysis of receiver operating characteristic (ROC) curves to determine the best indicator for predicting the pathological treatment responders. The area under the ROC curve (AUC) values for the reduction rate of tumor size, maximum standardized uptake value (SUVmax), peak standardized uptake value corrected for lean body mass (SULpeak), metabolic tumor volume (MTV), and total lesion glycolysis (TLG) were 0.478, 0.723, 0.786, 0.576, and 0.661, respectively

longer 1-year and 3-year RFS (91.7% and 68.8% vs 50.0% and 20.0%, $P = .029$) and OS (100.0% and 87.5% vs 90.0% and 45.0%, $P = .032$) than patients with < 50% reduction in MTV (Figure 5). A significantly greater number of responders underwent NAC ($P = .039$) and longer NAT duration than nonresponders ($P = .048$). There was no significant difference in the other parameters between the groups (Table S3).

On univariate Cox regression analysis, sex and MTV reduction < 50% were significant predictors for RFS; tumor differentiation grade, tumor size, and MTV reduction < 50% were significant predictors for OS. On multivariate Cox regression analysis, MTV reduction < 50% (HR, 3.922 [95% CI, 1.040-14.71]; $P = .044$) was an independent predictor for RFS (Table 3). Tumor differentiation grade (HR, 3.069 [95% CI, 1.37-6.89]; $P = .007$) and MTV reduction < 50% (HR, 14.085 [95% CI, 1.44-14.29]; $P = .023$) were independent predictors for OS (Table 3).

4 | DISCUSSION

The results of this study showed that PERCIST and SUVmax were superior to RECIST for determining the therapeutic effect of PDAC preoperative treatment. Moreover, the MTV reduction rate of < 50% was an independent prognostic factor.

In this study, SULpeak was the best indicator for predicting patients who would become responders, considering the PTR and its accurate representation of cellularity. According to the RECIST, 1 of 2 patients with PR and 13 of 20 patients with SD were responders considering the PTR. PERCIST classified using SULpeak is superior to RECIST in determining the therapeutic effect of NAT on PDAC. The pancreas is a fibrous-rich organ, which is better evaluated using ultrasonography,²⁸ and PDAC is rich in fibrous components that are denatured and replaced by fibrous interstitial cells even if the number of actual tumor cells decreases after NACRT,²⁹ which might correspond to poor changes in tumor size on CT scans. Accordingly, underestimating the therapeutic effect may result in delays in performing curative resection, thereby leading to cancer progression due to inefficient treatment.

In this study, the reduction rate of MTV before and after NAT was a better predictive parameter for recurrence and survival than other imaging parameters such as tumor size, SUVmax, SULpeak, and TLG according to ROC analysis. In addition, multivariate analysis showed that the MTV reduction rate was an independent prognostic factor for OS and RFS. Although there are some reports that PET parameters of the primary tumor or after NAT are associated with prognosis in advanced pancreatic cancer,^{21,25} there are no reports analyzing the association between PET parameters and prognosis only in resected PDAC cases treated with NAT; our study is the first such report. MTV is an effective prognostic predictive parameter and a volume index that reflects the size and extent of tissue with high glucose metabolism. In fact, SUVmax is less reproducible owing to the susceptibility of statistical noise because of a single point value of glucose metabolism and does not reflect the tumor viability of the entire tumor.¹⁶ The discrepancy that MTV was useful for predicting prognosis but a poor factor for predicting PTR is probably because PTR is not necessarily a prognostic factor. In fact, < 5% of residual tumor cells on pathological examination is reported as a good prognostic factor for PDAC,³⁰ but cases with < 5% are very rare. In this study, one of two patients with G1, according to the PTR, experienced early recurrence, and PTR was not a prognostic factor. To predict the NAT therapeutic effect and prognosis on PDAC, evaluation of several FDG PET/CT parameters might be important.

This study had several limitations. First, we focused on cases treated with curative resection to investigate the correlation with histopathological treatment effects. According to our institution protocol, patients evaluated as having PD according to RECIST continued chemotherapy; therefore, they did not undergo curative resection or participate in the study. Accordingly, no patients had PD according to RECIST or PMD according to PERCIST in this study, but future studies are required for such patients. Second, this was a retrospective study with a heterogeneous study population. In addition,

TABLE 2 Treatment response according to the RECIST, PERCIST, and PTR. The patients were considered responders (CR and PR according to RECIST, CMR and PMR according to PERCIST, and G3 according to PTR) and nonresponders (PD and SD according to RECIST, PMD and SMD according to PERCIST, and G0-2 according to PTR)

| | PTR | | | | | | Total | Sensitivity, % | Specificity, % | Concordance rate, % |
|---------|---------------|------------|---------------|------------|---------------|------------|-------|----------------|----------------|---------------------|
| | Grade3 | | Grade2 | | Grade0 | | | | | |
| | Nonresponders | Responders | Nonresponders | Responders | Nonresponders | Responders | | | | |
| RECIST | | | | | | | | | | |
| PD | 0 | 0 | 0 | 0 | 0 | 0 | 7.1 | 87.5 | 36.4 | |
| SD | 7 | 12 | 1 | 0 | 0 | 20 | | | | |
| PR | 1 | 0 | 1 | 0 | 0 | 2 | | | | |
| CR | 0 | 0 | 0 | 0 | 0 | 0 | | | | |
| Total | 8 | 12 | 2 | 0 | 0 | 22 | | | | |
| PERCIST | | | | | | | | | | |
| PMD | 0 | 0 | 0 | 0 | 0 | 0 | 78.6 | 62.5 | 72.7 | |
| SMD | 5 | 3 | 0 | 0 | 0 | 8 | | | | |
| PMR | 2 | 7 | 0 | 0 | 0 | 9 | | | | |
| CMR | 1 | 2 | 2 | 0 | 0 | 5 | | | | |
| Total | 8 | 12 | 2 | 0 | 0 | 22 | | | | |

Abbreviations: CMR, complete metabolic response; CR, complete response; PD, progressive disease; PERCIST, Positron Emission Tomography Response Criteria in Solid Tumors; PMD, progressive metabolic disease; PMR, partial metabolic response; PR, partial response; PTR, pathological treatment response; RECIST, Response Evaluation Criteria in Solid Tumors; SD, stable disease; SMD, stable metabolic disease.

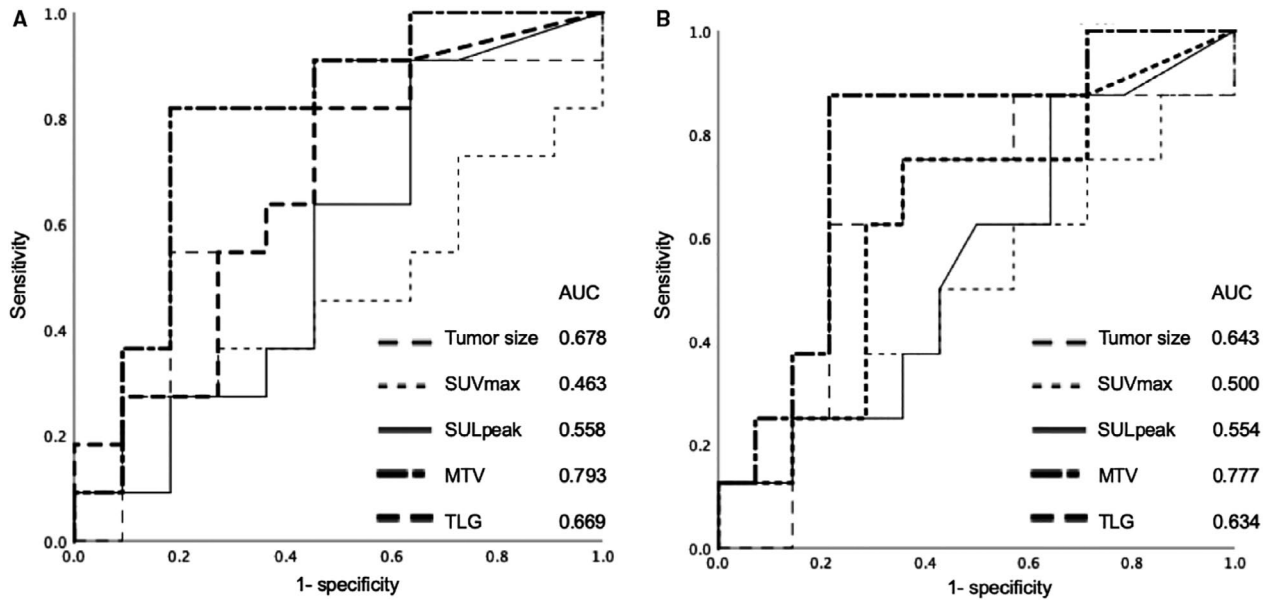


FIGURE 4 Analysis of receiver operating characteristic (ROC) curve to determine the best indicator for predicting recurrence (A) and prognosis (B). For recurrence, the area under the ROC curve (AUC) values for the reduction rate of tumor size, maximum standardized uptake value (SUVmax), peak standardized uptake value corrected for lean body mass (SULpeak), metabolic tumor volume (MTV), and total lesion glycolysis (TLG) were 0.678, 0.463, 0.558, 0.793, and 0.669, respectively. For survival, the AUC values for reduction rate of tumor size, SUVmax, SULpeak, MTV, and TLG were 0.643, 0.500, 0.554, 0.777, and 0.634, respectively

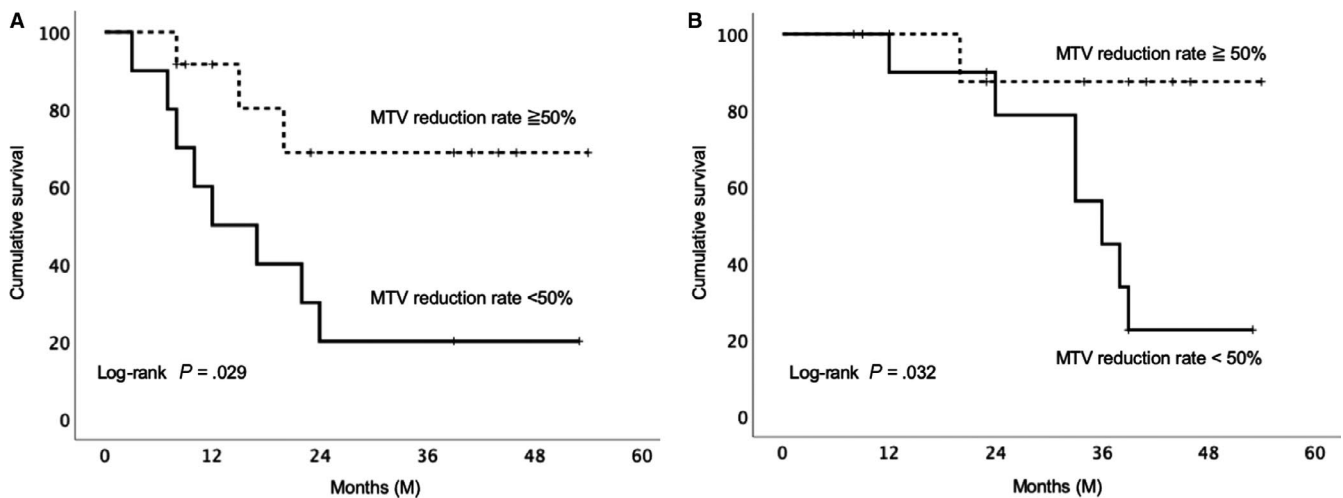


FIGURE 5 Survival curve using the Kaplan-Meier method. A, The relapse-free survival curve of patients with the metabolic tumor volume (MTV) reduction rate with a 50% cut-off value. B, Overall survival curve of patients with the MTV reduction rate with a 50% cut-off value

PERCIST can be used for evaluation only when PET/CT is performed using a consistent protocol. This criteria led to the exclusion of nearly half of the patients, which limited the sample size; thus, further prospective investigations in a larger number of cases are required. Finally, as PET/CT is expensive, this increases the medical costs, and not all patients might be able to undergo PET/CT before surgery.

In conclusion, PERCIST more accurately reflected NAT's therapeutic effect on PDAC than RECIST. In addition, the

change rate of MTV on PET/CT before and after NAT was an independent prognostic factor for PDAC. The precise evaluation of the PET/CT parameters may allow more appropriate prognostic stratification of PDAC, which leads to effective treatments for patients with PDAC.

ACKNOWLEDGMENTS

We would like to thank Editage (www.editage.com) for English language editing.

TABLE 3 Univariate and multivariate Cox regression analyses of prognostic factors for relapse-free survival and overall survival

| Variables | Relapse-free survival | | | | | Overall survival | | | | |
|------------------------------|-----------------------|-------|--------------|-------------|------|------------------|------|--------------|--------------|------|
| | Univariate | | Multivariate | | | Univariate | | Multivariate | | |
| | HR | P | HR | 95% CI | P | HR | P | HR | 95% CI | P |
| Gender | 0.297 | .090 | | | .266 | 2.343 | .246 | | | |
| SUVmax reduction rate < 50% | 1.319 | .686 | | | | 1.511 | .618 | | | |
| SULpeak reduction rate < 50% | 1.818 | .380 | | | | 1.211 | .817 | | | |
| MTV reduction rate < 50% | 3.922 | .044 | 3.922 | 1.040-14.71 | .044 | 7.092 | .068 | 14.08 | 1.439-14.286 | .023 |
| TLG reduction rate < 50% | 1.522 | .490 | | | | 1.473 | .585 | | | |
| Tumor differentiation grade | 1.409 | .219 | | | | 2.105 | .026 | 3.069 | 1.366-6.894 | .007 |
| Pathological tumor size | 0.694 | .422 | | | | 0.319 | .089 | | | .903 |
| R1 resection | 1.919 | .0284 | | | | 2.889 | .140 | | | |

Abbreviations: CI, confidence interval; HR, hazard ratio; MTV, metabolic tumor volume; SULpeak, peak standardized uptake value corrected for lean body mass; SUVmax, maximum standardized uptake value; TLG, total lesion glycolysis.

CONFLICT OF INTEREST

Masahiro Shinoda reports grants from Taiho Pharmaceutical Co., Ltd., Shionogi Co., Ltd., Eisai Co., Ltd., Novartis Pharma KK, Asahi KASEI Co., Ltd., Daiichi Sankyo Co., Ltd., outside the submitted work; Ryota Ishii reports personal fees from Kowa Company, Ltd., outside the submitted work; Shigeo Okuda reports grants from AZE Co., Ltd., outside the submitted work; Yuko Kitagawa reports grants from Taiho Pharmaceutical Co., Ltd., Chugai Pharmaceutical Co., Ltd., Yakult Honsha Co., Ltd., Daiichi Sankyo Co., Ltd., Merck Serono Co., Ltd., Asahi KASEI Co., Ltd., EA Pharma Co., Ltd., Otsuka Pharmaceutical Co., Ltd., Takeda Pharmaceutical Co., Ltd., Otsuka Pharmaceutical Factory Inc, Shionogi Co., Ltd., Kaken Pharmaceutical Co., LTD., Kowa Pharmaceutical Co., Ltd., Astellas Pharma Inc, Medicon Inc, Dainippon Sumitomo Pharma Co., Ltd., Taisho Toyama Pharmaceutical Co., Ltd., Kyouwa Hakkou Kirin Co., Ltd., Pfizer Japan Inc, Ono Pharmaceutical CO., LTD., Nihon Pharmaceutical CO., LTD., Japan Blood Products Organization, Medtronic Japan Co., Ltd., Sanofi KK, Eisai Co., Ltd., Tsumura Co., KCI Licensing, Inc, Abbott Japan CO., LTD., Fujifilm Toyama Chemical Co., Ltd., outside the submitted work. Other authors have nothing to disclose.

AUTHOR CONTRIBUTIONS

Study concept and design: Yokose, Kitago, and Matsusaka. Analysis and interpretation of data: Yokose, Matsusaka, Masugi, Endo, Iwabuchi, Toyama, and Okuda. Drafting of the manuscript: Yokose. Critical revision of the manuscript for important intellectual content: Kitago, Matsusaka,

Masugi, Shinoda, Yagi, Abe, Oshima, Hori, Nakahara, and Okuda. Statistical analysis: Takemura, and Ishii. Study supervision: Kitago, Jinzaki, and Kitagawa.

DATA AVAILABILITY STATEMENT

The data that support the findings of this study are available from the corresponding author upon reasonable request.

ORCID

Takahiro Yokose  <https://orcid.org/0000-0001-6946-280X>

REFERENCES

- Sant M, Allemani C, Santaquilani M, Knijn A, Marchesi F, Capocaccia R. EURO CARE-4. survival of cancer patients diagnosed in 1995–1999. Results and commentary. *Eur J Cancer*. 2009;45:931-991.
- Ferlay J, Shin HR, Bray F, Forman D, Mathers C, Parkin DM. Estimates of worldwide burden of cancer in 2008: GLOBOCAN 2008. *Int J Cancer*. 2010;127:2893-2917.
- Tempero MA, Malafa MP, Al-Hawary M, et al. Pancreatic adenocarcinoma, Version 2.2017, NCCN clinical practice guidelines in oncology. *J Natl Compr Canc Netw*. 2017;15:1028-1061.
- Uesaka K, Boku N, Fukutomi A, et al. Adjuvant chemotherapy of S-1 versus gemcitabine for resected pancreatic cancer: a phase 3, open-label, randomised, non-inferiority trial (JASPAC 01). *Lancet*. 2016;388:248-257.
- Mellon EA, Strom TJ, Hoffe SE, et al. Favorable perioperative outcomes after resection of borderline resectable pancreatic cancer treated with neoadjuvant stereotactic radiation and chemotherapy compared with upfront pancreatectomy for resectable cancer. *J Gastrointest Oncol*. 2016;7:547-555.
- Palmer DH, Stocken DD, Hewitt H, et al. A randomized phase 2 trial of neoadjuvant chemotherapy in resectable pancreatic cancer:

- gemcitabine alone versus gemcitabine combined with cisplatin. *Ann Surg Oncol*. 2007;14:2088-2096.
7. Fujii-nishimura Y, Nishiyama R, Kitago M, et al. Two cases of pathological complete response to neoadjuvant chemoradiation therapy in pancreatic cancer. *Keio J Med*. 2015;64:26-31.
 8. Endo Y, Kitago M, Aiura K, et al. Efficacy and safety of preoperative 5-fluorouracil, cisplatin, and mitomycin C in combination with radiotherapy in patients with resectable and borderline resectable pancreatic cancer: a long-term follow-up study. *World J Surg Oncol*. 2019;17:145-152.
 9. Nakano Y, Kitago M, Shinoda M, et al. Clinical predictive factors of long-term survival after curative resection of pancreatic cancer: a retrospective study. *Cancer Med*. 2017;6:2278-2286.
 10. Eisenhauer EA, Therasse P, Bogaerts J, et al. New response evaluation criteria in solid tumours: revised RECIST guideline (version 1.1). *Eur J Cancer*. 2009;45(2):228-247.
 11. Rahman SH, Urquhart R, Molinari M. Neoadjuvant therapy for resectable pancreatic cancer. *World J Gastrointest Oncol*. 2017;9:457-465.
 12. Katz MHG, Fleming JB, Bhosale P, et al. Response of borderline resectable pancreatic cancer to neoadjuvant therapy is not reflected by radiographic indicators. *Cancer*. 2012;118:5749-5756.
 13. Gillen S, Schuster T, Meyer zum Büschenfelde C, Friess H, Kleeff J. Preoperative/neoadjuvant therapy in pancreatic cancer: a systematic review and meta-analysis of response and resection percentages. *PLoS Med*. 2010;7:e1000267.
 14. de Geus-Oei LF, van der Heijden HF, Corstens FH, Oyen WJ. Predictive and prognostic value of FDG-PET in nonsmall-cell lung cancer: a systematic review. *Cancer*. 2007;110:1654-1664.
 15. Tamandl D, Gore RM, Fueger B, et al. Change in volume parameters induced by neoadjuvant chemotherapy provide accurate prediction of overall survival after resection in patients with esophageal cancer. *Eur Radiol*. 2016;26:311-321.
 16. Wahl RL, Jacene H, Kasamon Y, Lodge MA. From RECIST to PERCIST: evolving considerations for PET response criteria in solid tumors. *J Nucl Med*. 2009;50:122-150.
 17. Kitajima K, Nakatani K, Yamaguchi K, et al. Response to neoadjuvant chemotherapy for breast cancer judged by PERCIST—multicenter study in Japan. *Eur J Nucl Med Mol Imaging*. 2018;45:1661-1671.
 18. Ding Q, Cheng X, Yang L, et al. PET/CT evaluation of response to chemotherapy in non-small cell lung cancer: PET response criteria in solid tumors (PERCIST) versus response evaluation criteria in solid tumors (RECIST). *J Thorac Dis*. 2014;6:677-683.
 19. Mellon EA, Jin WH, Frakes JM, et al. Predictors and survival for pathologic tumor response grade in borderline resectable and locally advanced pancreatic cancer treated with induction chemotherapy and neoadjuvant stereotactic body radiotherapy. *Acta Oncol*. 2017;56:391-397.
 20. Sakane M, Tatsumi M, Hori M, et al. Volumetric parameters of 2-deoxy-2-[18F]fluoro-d-glucose positron emission tomography/computed tomography can predict histopathologic treatment response after neoadjuvant chemoradiotherapy in pancreatic adenocarcinoma. *Eur J Radiol*. 2017;94:64-69.
 21. Choi M, Heilbrun LK, Venkatramanamoorthy R, Lawhorn-Crews JM, Zalupski MM, Shields AF. Using 18F-fluorodeoxyglucose positron emission tomography to monitor clinical outcomes in patients treated with neoadjuvant chemo-radiotherapy for locally advanced pancreatic cancer. *Am J Clin Oncol*. 2010;33:257-261.
 22. Dalah E, Tai A, Oshima K, Hall WA, Erickson B, Li XA. PET-based treatment response assessment for neoadjuvant chemoradiation in pancreatic adenocarcinoma: an exploratory study. *Transl Oncol*. 2018;11:1104-1109.
 23. Song MK, Chung JS, Shin HJ, et al. Prognostic value of metabolic tumor volume on PET/CT in primary gastrointestinal diffuse large B cell lymphoma. *Sci Cancer*. 2012;103:477-482.
 24. Hyun SH, Choi JY, Shim YM, et al. Prognostic value of metabolic tumor volume measured by 18F-fluorodeoxyglucose positron emission tomography in patients with esophageal carcinoma. *Ann Surg Oncol*. 2010;17:115-122.
 25. Dholakia AS, Chaudhry M, Leal JP, et al. Baseline metabolic tumor volume and total lesion glycolysis are associated with survival outcomes in patients with locally advanced pancreatic cancer receiving stereotactic body radiation therapy. *Int J Radiat Oncol Biol Phys*. 2014;89:539-546.
 26. Makino T, Yamasaki M, Tanaka K, et al. Metabolic tumor volume change predicts long-term survival and histological response to preoperative chemotherapy in locally advanced esophageal cancer. *Annals Surgery*. 2019;270(6):1090-1095.
 27. Washington K, Berlin J, Branton P, et al. Protocol for the examination of specimens from patients with carcinoma of the exocrine pancreas. College of American Pathologists. 2013.
 28. Fujita Y, Kitago M, Abe T, et al. Evaluation of pancreatic fibrosis with acoustic radiation force impulse imaging and automated quantification of pancreatic tissue components. *Pancreas*. 2018;47:1277-1282.
 29. Chatterjee D, Katz MH, Rashid A, et al. Pancreatic intraepithelial neoplasia and histological changes in non-neoplastic pancreas associated with neoadjuvant therapy in patients with pancreatic ductal adenocarcinoma. *Histopathology*. 2013;63:841-851.
 30. Cloyd JM, Wang H, Egger ME, et al. Association of clinical factors with a major pathologic response following preoperative therapy for pancreatic ductal adenocarcinoma. *JAMA Surg*. 2017;152:1048-1056.

SUPPORTING INFORMATION

Additional supporting information may be found online in the Supporting Information section.

How to cite this article: Yokose T, Kitago M, Matsusaka Y, et al. Usefulness of ¹⁸F-fluorodeoxyglucose positron emission tomography/computed tomography for predicting the prognosis and treatment response of neoadjuvant therapy for pancreatic ductal adenocarcinoma. *Cancer Med*. 2020;9:4059–4068. <https://doi.org/10.1002/cam4.3044>