

RESEARCH ARTICLE

Open Access



Interactional justice at work is related to sickness absence: a study using repeated measures in the Swedish working population

Constanze Leineweber^{1*} , Claudia Bernhard-Oettel², Paraskevi Peristera¹, Constanze Eib³, Anna Nyberg¹ and Hugo Westerlund¹

Abstract

Background: Research has shown that perceived unfairness contributes to higher rates of sickness absence. While shorter, but more frequent periods of sickness absence might be a possibility for the individual to get relief from high strain, long-term sickness absence might be a sign of more serious health problems. The Uncertainty Management Model suggests that justice is particularly important in times of uncertainty, e.g. perceived job insecurity. The present study investigated the association between interpersonal and informational justice at work with long and frequent sickness absence respectively, under conditions of job insecurity.

Methods: Data were derived from the 2010, 2012, and 2014 biennial waves of the Swedish Longitudinal Occupational Survey of Health (SLOSH). The final analytic sample consisted of 19,493 individuals. We applied repeated measures regression analyses through generalized estimating equations (GEE), a method for longitudinal data that simultaneously analyses variables at different time points. We calculated risk of long and frequent sickness absence, respectively in relation to interpersonal and informational justice taking perceptions of job insecurity into account.

Results: We found informational and interpersonal justice to be associated with risk of long and frequent sickness absence independently of job insecurity and demographic variables. Results from autoregressive GEE provided some support for a causal relationship between justice perceptions and sickness absence. Contrary to expectations, we found no interaction between justice and job insecurity.

Conclusions: Our results underline the need for fair and just treatment of employees irrespective of perceived job insecurity in order to keep the workforce healthy and to minimize lost work days due to sickness absence.

Keywords: Interactional justice, interpersonal justice, informational justice, job insecurity, organizational justice, sickness absence, work stress, epidemiology, longitudinal studies

Background

Sickness absence is a major health concern and considered as a global measure of health status [1]. In Sweden, sickness absence has increased by 70% since 2010 and governmental spending on health insurance has increased by 11 billion Swedish crowns (around 1.2 billion Euro by December, 31 2014) between 2010 and 2014 [2].

Some important contributing factors to sickness absence are found in the work environment; such have low job control and low decision latitude at work been shown to increase the odds for sick leave [3–5]. A relatively newly established determinant of employee health is employees' perceptions of fairness in the organization, i.e., organizational justice. Organizational justice can be divided into several sub-dimensions: the fairness of formal decision-making in the organization (procedural justice), the perceived fairness of decision outcomes (distributive justice), and the treatment of employees by

* Correspondence: constanze.leineweber@su.se

¹Stress Research Institute, Stockholm University, Stockholm, Sweden
Full list of author information is available at the end of the article

supervisors (interactional justice) [6]. The interactional justice component of organizational justice is the focus of this study, and can be further divided into informational justice, i.e., receiving truthful and candid information with adequate justifications, and interpersonal justice concerning the respectful and dignified treatment from the supervisor [6].

Relatively little is known about how organizational justice relates to health and only since around the turn of the millennium research on organizational justice has been expanded to health outcomes [7]. Studies have investigated the relationship between justice perceptions and different health indicators, such as well-being, burnout, health problems, or sickness absence [8, 9]. Regarding sickness absence, the few existing studies generally suggest that perceived low organizational justice increases the risk of sickness absence. However, there is little consistency in the results and between-study differences are immense [9]. This may be due to the heterogeneity in sickness absence measures and an insufficient differentiation between long-term, short-term and frequent sickness absence. A sufficient differentiation between sickness absence measures is of importance; different mechanisms have been suggested to lie behind long and short term sick leave. While short-term sickness absence might be a means for the individual to get relief from high strain and therefore could be considered as a coping mechanism (the 'withdrawal' explanation), long-term sickness absence might be a sign of more serious health problems due to a prolonged stress reaction to poor work conditions (the 'stress' explanation) [5, 6]. However, to be able to look at different indicators of sickness absence, and to differentiate between long term and short term sickness absence, truly longitudinal studies with repeated measures of both predictor and outcome are needed. Until today, relatively few studies have examined the organizational justice–sickness absence relationship using longitudinal analysis techniques which take repeated measurements of organizational justice into account [10–12].

Consequently, the **first aim** of our study is to investigate the association between informational and interpersonal justice and long and frequent sickness absence, respectively, employing repeated measured covering a time span of six years.

The Uncertainty Management Model states that justice perceptions are of greater importance for people in insecure situations than for those in secure situations [13]. It is assumed that in uncertain situations, individuals use fairness as a heuristic to judge whether they can trust their employer and supervisor. If individuals perceive unfairness in uncertain times, they may

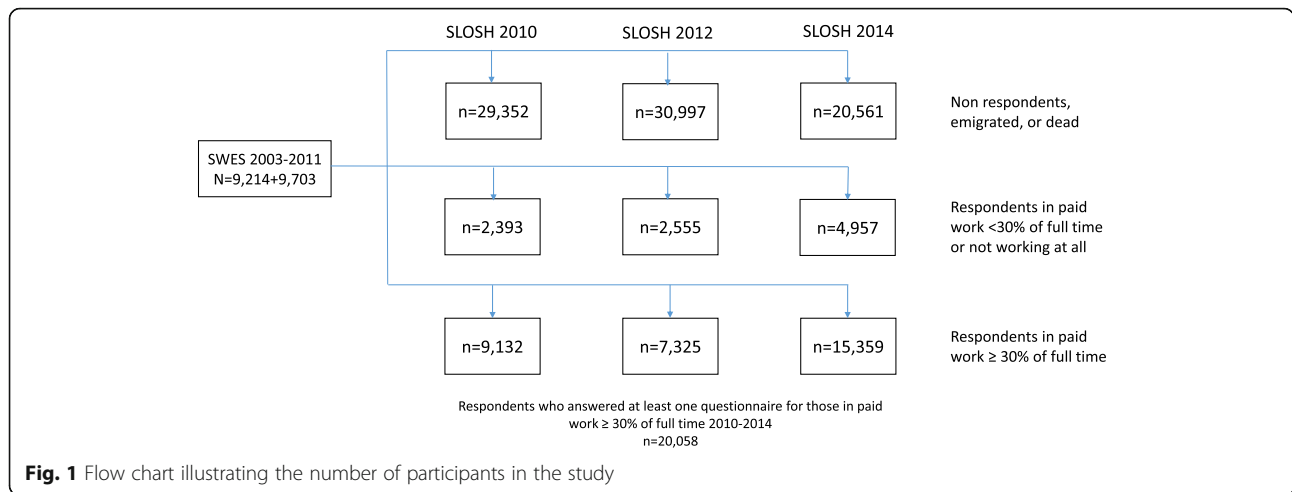
perceive their situation as even more unpredictable, which may just increase their feelings of stress and their tendency to call in sick. Indeed, previous experimental studies indicated that affective and behavioural reactions to perceived justice were stronger among those in uncertain situations [13]. A cross-sectional study reported a stronger association between procedural injustice and stress symptoms among employees with high compared with low job insecurity [14]. Another study found that job insecurity accentuated unfairness perceptions, which related negatively to well-being, but also here evidence is cross-sectional [15]. The Uncertainty Management Model assumptions were also supported by a study which found that associations between procedural and interpersonal justice and sickness absence were dependent on experienced work-time control and perceived changes at work [16]. However, while low interpersonal justice may increase the risks for long and frequent sickness absence due to high stress levels, low informational justice may lead to decreases in frequent but short absence when there is high job insecurity, since employees may go to work and seek information to reduce their uncertainty. Still, to the best of our knowledge, very little is known about the role of informational and interpersonal justice for sickness absence in times of high uncertainty at work, such as high job insecurity.

Thus, our **second aim** to investigate the association between interpersonal and informational justice at work and long and frequent sickness absence under conditions of job insecurity.

Methods

Study population

The study population consisted of the participants of SLOSH (Swedish Longitudinal Occupational Survey of Health), a longitudinal cohort study with a focus on the association between work organization, work environment, and health (www.slosh.se). SLOSH follows participants of the Swedish Work Environment Surveys (SWES) 2003-2011 (n=40,877). SWES is conducted biennially by Statistics Sweden and consist of a subsample of gainfully employed people aged 16-64 from the Labour Force Survey (LFS) representative of the Swedish working population. Since the start of SLOSH in 2006, eligible SWES participants were invited every second year to respond to a postal questionnaire in two versions, one for those currently in paid work and one for those permanently or temporarily outside the labour force. Items of interest for the present study were measured since 2010. The present paper is based on participants who responded at least once on the questionnaires for those in paid work between the 2010 (wave 3) and the 2014 (wave 5) data collection (Fig. 1). Response rates



were 57% in 2010 (n=11,525), 57% in 2012 (n=9,880), and 53% in 2014 (n=20,316). After exclusion of self-employed and farmers the final study sample consisted of 19,493 individuals with 58,479 observations. All participants gave their informed consent. Both SLOSH and the present study have been approved by the Regional Research Ethics Board in Stockholm.

Main measurements

Interactional organizational justice

Interactional justice was measured by items from the Stress profile – managerial leadership, [17] a measure originally constructed to measure leadership climate. In a first step, we identified seven out of nine items¹ which we regarded as comparable to items used in scales to measure interactional justice [6, 18, 19]. All items were responded to on a four-point Likert-scale ranging from 1='yes, often' to 4='no, never', thus higher values indicate lower justice. An exploratory factor analysis based on a random half of the 2010 data suggested a two-factor solution; one factor with four items about the supervisor's respect and dignity in the treatment of the employees, and one with three items about information and expectations. Following Colquitt, [6] we call these factors 'interpersonal' and 'informational' justice. A subsequent confirmatory factor analysis based on the other random 50% of the sample provided satisfying fit values. The two-factor model with correlated latent variables (r=.84) provided better fit than the one factor model or a two-factor model with uncorrelated latent variables. Item wordings for each factor and model fit are presented in Additional file 1. Factor analyses were conducted in Mplus7.4.

To calculate scale values for interpersonal and informational justice, we subtracted the number one from the original value (to get a range from 0 to 3) and

calculated the mean of the four and three items, respectively. Cronbach's alpha varied over the waves between 0.89 and 0.90 for interpersonal justice, and between 0.80 and 0.81 for informational justice, indicating a high interrelation between justice items.

Job insecurity

Job insecurity was measured with three items about worries losing one's job [20]. Response options ranged from 1=totally disagree to 5=totally agree. After subtracting one from the original value, we calculated the mean of the three items reflecting job insecurity for each wave. Higher values indicated more job insecurity. Cronbach's alpha was 0.95 in all waves, indicating a high interrelation between justice items.

Sickness absence

Sickness absence (excluding leave due to care of sick children) was measured in two ways [21, 22]. *Long-term sickness absence* was measured by a question regarding days of sickness absence over the past year. In line with definitions used in earlier studies, [23, 24] participants were defined as having been on long sickness absence if they stated that they had taken sick leave 31 days or more during the past 12 months. *Frequent sickness absence* was measured by a question covering number of occasions of sickness absence for up to one week during the past year. Participants were defined as having been on frequent sickness absence if they responded that they had taken sick leave twice or more during the past 12 months.

Covariates

Age, sex, socio-economic position and marital status were included as covariates; these variables are likely to influence both the outcome and the exposure [25, 26].

All covariates except marital status were obtained from register data linked to questionnaire responses by means of the unique Swedish ten-digit personal identification number. Age was assessed as the participants' age at the end of the year the questionnaire was answered. A measure for sex was dichotomous. The measure of socio-economic position was based on the Swedish socio-economic classification with original 18 basic categories and dichotomised into manual and non-manual employees [27]. Marital status was obtained by a single question with response alternatives 'single' or 'married/cohabiting'.

Data analysis

Data were analysed using generalized estimating equations (GEE), a method for longitudinal data simultaneously analysing variables at different time points by assuming a priori a certain working correlation structure for the repeated measurements of the outcome variable [28]. GEE analyses were carried out in Proc Genmod in the statistical package SAS (version 9.4). Log-linked binomial regression models were specified to calculate risk ratios. The analyses in the GEE models were performed using an unstructured working correlation structure, a form that is most efficient and useful when there is data from relatively few time points [29]. We analysed the relationship between justice perceptions and long and frequent sickness absence, respectively. Separate models were run for interpersonal and informational justice. Measures of interactional justice and job insecurity were grand-mean centered. First, all study variables were analysed separately in their relation to long and frequent sickness absence, respectively (Model 0). Secondly, to answer the question whether lower levels of justice at work and job insecurity were associated with sickness absence we included justice, job insecurity, and time measured as a continuous variable simultaneously (Model 1). In the next step we added an interaction term between justice and job insecurity, thus testing if lower levels of justice are more harmful under conditions of higher job insecurity (Model 2), and in a last model (Model 3), we adjusted for demographical factors (i.e., age, sex, socio-economic position, marital status). All variables were used as time-varying covariates.

As the standard GEE pool together between participants (cross-sectional) and within participants (longitudinal) relationships, we additionally applied autoregressive GEE so as to remove the between-subjects part of the relationship between informational and interpersonal justice, respectively, and sickness absence [30]. In autoregressive GEE the value of the outcome variable at a specific time point is predicted by the very same variable's value of the

previous time point $t-1$ (autoregression) and the value of the predictor variable at the previous time point $t-1$ [31]. For details, see Additional file 2.

To test if missing data were "informative" or "ignorable" [30], we divided the population into two groups, one including the subjects without any missing data over the study period and one including the subjects with missing data at one or more of the repeated measurements. The two groups were then compared to each other regarding the values of the outcome variables and the covariates at the first measurement. Results are presented in Additional file 3.

Results

Descriptive information is presented in Table 1. At baseline, 5% of the study population reported having been on long sickness absence during the past 12 months and 20% reported having been on frequent sickness absence. Job insecurity (range 0-4) was generally rated as low with a mean of 0.47 (SD=0.92). All potential confounders were independently associated with long and frequent sickness absence, respectively (see Additional file 4).

Interpersonal justice

Tables 2 and 3 show the estimated risk ratios between interpersonal justice and long (Table 2) and frequent (Table 3) sickness absence. In the crude models (Model 0) lower levels of interpersonal justice were statistically significantly related to an increased risk of long (RR=1.19, 95% CI: 1.11-1.27) as well as frequent sickness absence (RR=1.14; 95% CI: 1.10-1.18). These relations did only marginally change when controlling for higher job insecurity and time. Also in the autoregressive models (Model 1), lower levels of interpersonal justice were statistically significantly related to both long (RR=1.10; 95% CI: 1.00-1.20) and frequent (RR=1.05; 95% CI: 1.00-1.10) sickness absence.

We then investigated the relation of interpersonal justice to sickness absence in interaction with job insecurity (Model 2). We found a statistically significant relationship between lower levels of interpersonal justice and long (RR=1.16; 95% CI: 1.09-1.25) and frequent (RR=1.12; 95% CI: 1.09-1.16) sickness absence. However, the interaction terms did not reach statistical significance. Also here, results for the autoregressive relationship reached statistical significance, both in regard to long (RR=1.10; 95% CI: 1.00-1.20) and frequent sickness absence (RR=1.05; 95% CI: 1.00-1.10). Additional control for demographic confounders (Model 3) altered results only marginally.

Higher levels of job insecurity were statistically significantly related to long as well as frequent sickness absence in all models.

Table 1 Characteristics of the study participants at wave 1 (2010) – wave 3 (2014)

Variable	Wave 1	Wave 2	Wave 3
Sex, n (%)			
Male	3,882 (42.6)	3,276 (42.3)	6,937 (42.5)
Female	5,235 (57.4)	4,475 (57.7)	9,396 (57.5)
Age ^a , mean (SD)	49.2 (10.4)	51.3 (10.4)	51.70 (10.5)
SES, n (%)			
Manual	2,860 (32.4)	2,404 (31.8)	4,821 (30.3)
Non-manual	5,966 (67.6)	5,148 (68.2)	11,075 (69.7)
Marital status, n (%)			
Married, cohabiting	7,093 (79.5)	6,094 (79.3)	12,818 (79.2)
Single	1,830 (20.5)	1,589 (20.7)	3,366 (20.8)
Interpersonal justice ^b , mean (SD)	1.13 (0.80)	1.12 (0.77)	1.00 (0.76)
Informational justice ^b , mean (SD)	0.78 (0.67)	0.79 (0.66)	0.70 (0.63)
Job insecurity ^c , mean (SD)	0.47 (0.92)	0.42 (0.88)	0.36 (0.81)
Long sickness absence, n (%)			
0-30 days during the past 12 months	8,524 (94.7)	7,030 (92.1)	15,217 (94.1)
31 days or more during the past 12 months	478 (5.3)	599 (7.8)	960 (5.9)
Frequency of sickness absence, n (%)			
< 2 periods during the past 12 months	6,823 (80.1)	5,384 (79.7)	11,890 (80.2)
2 periods or more during the past 12 months	1,699 (19.9)	1,370 (20.3)	2,933 (19.8)

^a range: 20-72

^b range: 0-3 (higher values indicate lower levels of perceived justice)

^c range: 0-4

Informational justice

Tables 4 and 5 present the estimated risk ratios between informational justice and long (Table 4) and frequent (Table 5) sickness absence. Not controlling for any confounder (Model 0), lower levels of informational justice were statistically significantly related to an increased risk of both long (RR=1.14; 95% CI: 1.06-1.23) and frequent (RR=1.16; 95% CI: 1.12-1.20) sickness absence. These relationships altered only

marginally when controlling for job insecurity (Model 1). In the autoregressive analyses, lower levels of informational justice were no longer associated with an increased risk of long sickness absence (RR=1.02; 95% CI: 0.92-1.13). Still, lower levels of informational justice were significantly associated to frequent sickness absence, even when controlling for previous episodes of frequent sickness absence (RR=1.08; 95% CI: 1.02-1.13).

Table 2 Results of the generalized estimating equations (GEE) analyses of the association between interpersonal justice (higher values indicate lower levels of perceived justice) and long sickness absence (31 days or more the previous 12 months), presented as Risk ratios (RR) with 95% CIs

	Model 0		Model 1		Model 2		Model 3	
Results for standard GEE	RR	95% CI	RR	95% CI	RR	95% CI	RR	95% CI
Interpersonal justice	1.19	1.11-1.27	1.17	1.09-1.25	1.16	1.09-1.25	1.18	1.10-1.28
Job insecurity	1.13	1.07-1.19	1.11	1.05-1.17	1.09	1.03-1.16	1.12	1.04-1.20
Justice*insecurity					1.04	0.98-1.10	1.03	0.96-1.10
Results for autoregressive GEE								
Interpersonal justice			1.10	1.00-1.20	1.10	1.00-1.20	1.10	1.01-1.21
Job insecurity			1.08	1.01-1.16	1.09	1.01-1.17	1.11	1.03-1.19
Previous sickness absence			3.44	2.81-4.22	3.44	2.81-4.22	2.73	2.20-3.39
Justice*insecurity					0.99	0.91-1.08	0.98	0.90-1.07

Model 1: interpersonal justice, job insecurity, and time included contemporarily; Model 2: Model 1 plus interaction term included; Model 3: Model 2 plus age, sex, socio-economic position, and marital status

Table 3 Results of the generalized estimating equations (GEE) analyses of the association between interpersonal justice (higher values indicate lower levels of perceived justice) and frequent sickness absence (two periods or more during the previous 12 months), presented as risk ratios (RR) with 95% CIs

	Model 0		Model 1		Model 2		Model 3	
	RR	95% CI	RR	95% CI	RR	95% CI	RR	95% CI
Results for standard GEE								
Interpersonal justice	1.14	1.10-1.18	1.13	1.09-1.16	1.12	1.09-1.16	1.14	1.10-1.12
Job insecurity	1.10	1.08-1.13	1.07	1.05-1.10	1.07	1.04-1.10	1.05	1.01-1.08
Justice*insecurity					1.00	0.88-1.13	1.01	0.98-1.04
Results for autoregressive GEE								
Interpersonal justice			1.05	1.00-1.10	1.05	1.00-1.10	1.05	1.00-1.11
Job insecurity			1.08	1.04-1.12	1.08	1.04-1.12	1.07	1.03-1.11
Previous sickness absence			4.56	4.17-5.00	4.56	4.17-5.00	4.18	3.80-4.59
Justice*insecurity					0.99	0.95-1.04	0.98	0.02-1.03

Model 1: interpersonal justice, job insecurity, and time included contemporarily; Model 2: Model 1 plus interaction term included; Model 3: Model 2 plus age, sex, socio-economic position, and marital status

Investigating the relationship between informational justice and sickness absence in interaction with job insecurity (Model 2), we found lower levels of informational justice to be associated with an increased risk of long (RR=1.12; 95% CI: 1.03-1.21) and frequent (RR=1.15; 95% CI: 1.11-1.19) sickness absence. When controlling for demographic confounders the relationship with long sickness absence was slightly strengthened (RR=1.21; 95% CI: 1.10-1.33), but remained unchanged for frequent sickness absence (RR=1.16; 95% CI: 1.11-1.21). Turning to the autoregressive models, we found that lower levels of informational justice were not significantly related to long sickness absence (RR=1.02; 95% CI: 0.92-1.13), but did relate to an increased risk of frequent sickness absence (RR=1.07; 95% CI: 1.01-1.13). These results did not change substantially when controlling for demographic confounders (Model 3). The interaction term between informational justice and job insecurity did not reach statistical significance in any of the models.

Higher levels of job insecurity were related to both long as well as frequent sickness absence in all models including informational justice, although risk ratios were mostly low.

Discussion

In line with our expectations, perceptions of lower levels of interpersonal and informational justice increased the risk of long as well as frequent sickness absence, using standard GEE. These findings suggest that lower levels of justice at work might relate both to increased withdrawal behaviour in form of shorter, but more frequent sickness absence periods and to more serious health effects as indicated by an increased risk of longer sickness absence episodes. Thus, our results are in line with earlier research showing that low levels of organizational justice are associated with an increased risk for ill-health and sickness absence [16, 32, 33]. However, observed differences in risk ratios regarding the two different sickness absence measures were small and future studies

Table 4 Results of the generalized estimating equations (GEE) analyses of the association between informational justice (higher values indicate lower levels of perceived justice) and long sickness absence (31 days or more the previous 12 months), presented as risk ratios (RR) with 95% CIs

	Model 0		Model 1		Model 2		Model 3	
	RR	95% CI	RR	95% CI	RR	95% CI	RR	95% CI
Results for standard GEE								
Informational justice	1.14	1.06-1.23	1.12	1.03-1.21	1.12	1.03-1.21	1.21	1.10-1.33
Job insecurity	1.13	1.07-1.19	1.12	1.06-1.18	1.12	1.06-1.19	1.14	1.07-1.23
Justice*insecurity					1.00	0.93-1.07	0.98	0.91-1.06
Results for autoregressive GEE								
Informational justice			1.02	0.92-1.13	1.02	0.92-1.13	1.09	0.99-1.21
Job insecurity			1.08	1.00-1.15	1.08	1.00-1.16	1.11	1.03-1.19
Previous sickness absence			3.48	2.88-4.19	3.48	1.89-4.19	2.83	2.33-3.43
Justice*insecurity					0.98	0.90-1.07	0.96	0.88-1.04

Model 1: informational justice, job insecurity, and time included contemporarily; Model 2: Model 1 plus interaction term included; Model 3: Model 2 plus age, sex, socio-economic position, and marital status

Table 5 Results of the generalized estimating equations (GEE) analyses of the association between informational justice (higher values indicate lower levels of perceived justice) and frequent sickness absence (2 periods or more during the previous 12 months), presented as risk ratios (RR) with 95% CIs

	Model 0		Model 1		Model 2		Model 3	
	RR	95% CI	RR	95% CI	RR	95% CI	RR	95% CI
Results for standard GEE								
Informational justice	1.16	1.12-1.20	1.14	1.10-1.19	1.15	1.11-1.19	1.16	1.11-1.21
Job insecurity	1.10	1.08-1.13	1.07	1.05-1.10	1.08	1.05-1.11	1.06	1.02-1.09
Justice*insecurity					0.98	0.95-1.01	0.98	0.95-1.01
Results for autoregressive GEE								
Informational justice			1.08	1.02-1.13	1.07	1.01-1.13	1.08	1.02-1.14
Job insecurity			1.06	1.02-1.10	1.05	1.01-1.09	1.05	1.00-1.09
Previous sickness absence			4.60	4.23-5.01	4.61	4.23-5.02	4.20	3.84-4.60
Justice*insecurity					1.02	0.97-1.07	1.00	0.94-1.06

Model 1: informational justice, job insecurity, and time included contemporarily; Model 2: Model 1 plus interaction term included; Model 3: Model 2 plus age, sex, socio-economic position, and marital status

should further investigate possible differentiating effects of organizational justice on long and frequent sickness absence.

Based on the results from the standard GEE, no conclusions can be drawn regarding the temporal relationship between low justice perceptions and sickness absence, i.e. we do not know if effects of organizational justice are due to differences in perceived organizational justice between participants (cross-sectional) or within participants (longitudinal). Thus, using autoregressive GEE we removed the between-subjects part of the relationships by taking previous periods of sickness absence into account and investigated possible longitudinal associations between organizational justice and sickness absence. Regarding interpersonal justice, autoregressive GEE revealed that the increased risks of long and frequent sickness absence, respectively, can be explained by within-effects, i.e., having experienced a decrease of interpersonal justice at a personal level related to an increase in sickness absence in that person. Regarding informational justice, we found no significant increased risk of long sickness absence using autoregressive GEE, i.e., our results indicate that our findings from standard GEE rely mainly on between-effects. In other words, people with lower justice perceptions have an increased risk of long sickness absence in comparison to those with higher justice perceptions. With regard to frequent sickness absence, we found a small statistically significant effect of informational justice, indicating that changes in informational justice perceptions were related to increased withdrawal behaviour in form of frequent sickness absence episodes.

In a next step, we investigated the relations justice and sickness absence in interaction with job insecurity. In contrast to our expectations, we could not find any

statistically significant interaction between justice perceptions and job insecurity; i.e., the association between lower levels of justice perceptions and any type of sickness absence did not differ under conditions of higher levels of job insecurity. It is quite possible that this null-finding can be explained by the general low levels of perceived job insecurity in our study population; seventy percent of the study population did not report any job insecurity at all.

Our results contradict previous findings showing that the relationship between low justice and strain was moderated by uncertainty-related aspects of the workplace [14, 16]. However, while we measured job insecurity in terms of being afraid of losing one's job, Elovainio et al. operationalised insecurity in terms of control over working hours and negative changes [16]. Also, the authors of the uncertainty management model are quite ambiguous in their definitions of uncertainty and it might make a difference whether we investigate environmental uncertainty (e.g., job insecurity) or personal uncertainty (e.g., lack of standing/respect/belonging to a work group, self-esteem issues). Also, job insecurity might not be bad for everyone, e.g., a temporary work contract might be accepted as a step in career or as a possibility which offers flexibility.

Strengths and limitations

Strengths of this study are the large study population approximately representative of the Swedish working population covering a wide range of occupations and sectors, and its longitudinal design. Furthermore, our analysis relies on a longitudinal analysis technique, which allows an efficient adjustment for correlated data and provides more robust results than traditional regression analysis. Also, GEE provides consistent estimates even with miss-specified correlation structures which

ensures the robustness of the results. Despite these strengths, there are also limitations to consider. We based our analyses on a sample where some individuals had only responded to one or two of the three included waves. One problem that may arise from missing data and drop out is that the distribution of the observed data may not be the same as the distribution of the complete data. The GEE models may yield biased estimates unless drop out is MCAR (missing completely at random) although it is not clear from the literature how important this bias really is [30]. However, a sensitivity analysis based on a sample including only those who had answered on at least two out of three waves provided very similar results as the here presented ones. Thus, there is some evidence that missing values are not a problem for our analysis. Another limitation might be that all variables are based on self-reports, which could inflate the risk for common method bias. It has, however, been shown that same-method observed score correlations are relatively accurate representations of their true-score counterparts and that in many cases, common method bias may be trivially small [34, 35]. Also, estimates may suffer from the omitted-variable bias, such as e.g. personality traits might correlated with measures that are used in the analyses [36]. Another issue that is of major importance for the size of estimated effects is the time frame. Whether or not the time frame of two years is optimal is unknown and a shorter time span might have been better suited to catch withdrawal reactions. Another possible shortcoming is that our scale measuring certain dimensions of justice was originally developed to measure leadership climate. Still, our items are comparable to items used in other justice scales and show good internal reliability. A further shortcoming is found in the fact that heterogeneity was not taken into account and further studies should investigate potential effects of gender as there are indications that women reacted more strongly with ill-health to injustice perceptions compared to men [37, 38]. Further, employees are not randomly assigned into workplaces and failure to account for sorting of employees could bias estimated effects [36]. We addressed this concern at least partly by using autoregressive GEE, controlling for prior health. However, despite using autoregressive GEE in addition to standard GEE, causality cannot be established and reversed effects as suggested by Lang et al. and Ybema et al. cannot be excluded [10, 39]. Also, our outcomes of sickness absence were based on self-report data and sickness absence gathered from population registries or company records would have been preferable [40–42]. However, several European studies report a relatively good agreement between self-reported and recorded

days of sickness [43, 44]. Thus, taken together our results indicate that actions to improve job security and justice at work might be well suited to decrease sickness absence rates.

Conclusions

Our findings indicate that lower levels of informational and interpersonal justice are associated with an increased risk for long and frequent sickness absence. Also, higher levels of job insecurity turned out as an important predictor of both long and frequent sickness absence. Perceived fairness at work is a modifiable aspect of the work environment, as is job insecurity. Organizations have significant control over both aspects and our results suggest that organizations may gain by investing or improving their policies and rules for fair treatment of their workforce and by improving job security. Further, organization might gain by selection of supervisors for their qualities associated with fair practices, training supervisors in justice principles, and implement performance management practices for them that consider their use of organizational justice [45]. Indeed, training in justice principles has been shown to be successful in different organizational contexts and is connected with relative lower costs as compared to other justice interventions (e.g. raising pay) [46].

Endnotes

¹One of the original 10 items in the stress profile (“I receive criticism from my boss if I have done something that is not good”) was not taken into consideration as it was not measured in all waves.

Additional files

Additional file 1: Model fits for interactional justice and factor loadings. (DOCX 27 kb)

Additional file 2: Standard and autoregressive GEE models. (DOCX 25 kb)

Additional file 3: Attrition analysis comparing those who had full information in all waves compared to those with missing information on at least one variable at least at one wave. (DOCX 27 kb)

Additional file 4: Results of standard generalized estimating equations (GEE) analyses of the association between covariates and long and frequent sickness absence, respectively, presented as risk ratios (RR) with 95% CIs. RRs represent the uncontrolled risk ratios. (DOCX 26 kb)

Abbreviations

CI: Confidence interval; GEE: Generalised estimating equations; LFS: Labour Force Survey; RR: Risk ratio; SD: Standard deviation; SWES: Swedish Work Environment Survey

Acknowledgements

Not applicable.

Funding

This work funded by grants of the Swedish Foundation for Humanities and Social Science (grant no. P13-0905:1) and partly funded by the Stockholm

Stress Center, a FORTE Centre of Excellence (FORTE, grant no. 2009-1758). The SLOSH study was supported by the Swedish Council for Working life (FAS, grant #2005-0734) and the Swedish Research Council (VR, grant no. 2009-6192 and 2013-1645). The funders had no role in the research process and were not involved in the writing of the article.

Availability of data and materials

The datasets generated and/or analysed during the current study are not publicly available due legal restrictions but are available from the corresponding author on reasonable request.

Authors' contributions

CL contributed to acquisition of data, formulated the study design, carried out some analysis, interpreted the results and wrote the first and successive drafts of the paper. CBO and CE made substantial contributions to the study design and the interpretation of data. PP advised and carried out the statistical analysis, and contributed to the interpretation of data. HW contributed to acquisition of data, formulated the study design and interpreted the results. AN contributed to the study design and participated in the interpretation of data. All authors have been involved in drafting the manuscript or revised it critically for important intellectual content and approved the final draft of the report.

Ethics approval and consent to participate

All participants gave their informed consent. Both SLOSH and the present study have been approved by the Regional Research Ethics Board in Stockholm.

Consent for publication

Not applicable

Competing Interests

The authors declare that they have no competing interests.

Publisher's Note

Springer Nature remains neutral with regard to jurisdictional claims in published maps and institutional affiliations.

Author details

¹Stress Research Institute, Stockholm University, Stockholm, Sweden.

²Department of Psychology, Stockholm University, Stockholm, Sweden.

³Norwich Business School, University of East Anglia, Norwich, UK.

Received: 21 June 2017 Accepted: 12 November 2017

Published online: 08 December 2017

References

- Marmot M, Feeney A, Shipley M, North F, Syme SL. Sickness absence as a measure of health status and functioning: from the UK Whitehall II study. *J Epidemiol Community Health*. 1995;**49**(2):124–30.
- Regeringen tar krafttag för ökad hälsa och minskad sjukfrånvaro
- Hystad S, Eid J, Brevik J. Effects of psychological hardiness, job demands, and job control on sickness absence: A prospective study. *J Occup Health Psychol*. 2011;**16**(3):265–78.
- Arola H, Pitkänen M, Nygård C, Huhtala H, Manka M. The connection between age, job control and sickness absences among Finnish food workers. *Occup Med*. 2003;**53**(3):229–30.
- Duijts SF, Kant I, Swaen GM, van den Brandt PA, Zeegers MP. A meta-analysis of observational studies identifies predictors of sickness absence. *J Clin Epidemiol*. 2007;**60**(11):1105–15.
- Colquitt JA, Conlon DE, Wesson MJ, Porter CO, Ng KY. Justice at the millennium: a meta-analytic review of 25 years of organizational justice research. *J Appl Psychol*. 2001;**86**(3):425–45.
- Elovainio M, Linna A, Virtanen M, Oksanen T, Kivimäki M, Pentti J, Vahtera J. Perceived organizational justice as a predictor of long-term sickness absence due to diagnosed mental disorders: Results from the prospective longitudinal Finnish Public Sector Study. *Soc Sci Med*. 2013;**91**:39–47.
- Ndjaboué R, Brisson C, Vézina M. Organisational justice and mental health: a systematic review of prespective studies. *Occup Environ Med*. 2012; **69**:694–700.
- Robbins JM, Ford MT, Tetrick LE. Perceived unfairness and employee health: a meta-analytic integration. *J Appl Psychol*. 2012;**97**(2):235–72.
- Ybema JF, van den Bos K. Effects of organizational justice on depressive symptoms and sickness absence: a longitudinal perspective. *Soc Sci Med*. 2010;**70**(10):1609–17.
- Elovainio M, Kivimäki M, Steen N, Vahtera J. Job decision latitude, organizational justice and health: multilevel covariance structure analysis. *Soc Sci Med*. 2004;**58**(9):1659–69.
- Elovainio M, Linna A, Virtanen M, Oksanen T, Kivimäki M, Pentti J, Vahtera J. Perceived organizational justice as a predictor of long-term sickness absence due to diagnosed mental disorders: results from the prospective longitudinal Finnish Public Sector Study. *Soc Sci Med*. 2013;**91**:39–47.
- van den Bos K, Lind EA. Uncertainty management by means of fairness judgments. In: Zanna MP, editor. *Advances in expermental social psychology*, vol. 34. San Diego: Academic Press; 2002. p. 1–60.
- Kausto J, Elo AL, Lipponen J, Elovainio M. Moderating effects of job insecurity in the relationships between procedural justice and employee well-being: gender differences. *European Journal of Work and Organizational Psychology*. 2005;**14**(4):431–52.
- Bernhard-Oettel C, De Cuyper N, Schreurs B, De Witte H. Linking Job Insecurity to Well-being and Organizational Attitudes in Belgian Workers: The Role of Security expectations and Fairness Perceptions. *Int J Hum Resour Man*. 2011;**22**(9):1866–86.
- Elovainio M, van den Bos K, Linna A, Kivimäki M, Ala-Mursula L, Pentti J, Vahtera J. Combined effects of uncertainty and organizational justice on employee health: testing the uncertainty management model of fairness judgments among Finnish public sector employees. *Soc Sci Med*. 2005; **61**(12):2501–12.
- Setterlind S, Larsson G. The Stress Profile: a psychosocial approach to measuring stress. *Stress Medicine*. 1995;**11**(1):85–92.
- Moorman RH. Relationship between organizational justice and organizational citizenship behaviors: Do fairness perceptions influence employee citizenship? *J Appl Psychol*. 1991;**76**(6):845–55.
- Kivimäki M, Ferrie JE, Head J, Shipley MJ, Vahtera J, Marmot MG. Organisational justice and change in justice as predictors of employee health: the Whitehall II study. *J Epidemiol Community Health*. 2004;**58** (11):931–7.
- Hellgren J, Sverke M, Isaksson K. A Two-dimensional Approach to Job Insecurity: Consequences for Employee Attitudes and Well-being. *European Journal of Work and Organizational Psychology*. 1999;**8**(2):179–95.
- Leineweber C, Westerlund H, Hagberg J, Svedberg P, Alexanderson K. Sickness presenteeism is more than an alternative to sickness absence: results from the population-based SLOSH study. *Int Arch Occup Environ Health*. 2012;**85**(8):905–14.
- Nyberg A, Leineweber C, Magnusson Hanson L. Gender differences in psychosocial work factors, work-personal life interface, and well-being among Swedish managers and non-managers. *Int Arch Occup Environ Health*. 2015;**88**(8):1149–64.
- Hultin H, Hallqvist J, Alexanderson K, Johansson G, Lindholm C, Lundberg I, Moller J. Low level of adjustment latitude—a risk factor for sickness absence. *European Journal of Public Health*. 2010;**20**(6):682–8.
- Norwegian ministry of labour: Kunnskapsnotan - utveckling i sykefravaeret. 2010.
- Kawachi I. Injustice at work and health: causation or correlation? *Occup Environ Med*. 2006;**63**:578–9.
- Ploubidis GB, Silverwood RJ, DeStavola B, Grundy E. Life-Course Partnership Status and Biomarkers in Midlife: Evidence from the 1958 British Birth Cohort. *Am J Public Health Nations Health*. 2015;**105**(8):1596–603.
- Sweden S. Socioekonomisk indelning (SEI) [Socioeconomic classification]. Stockholm: In. Edited by Statistics Sweden; 1982.
- Liang K-Y, Zeger SL. Longitudinal data analysis using generalised linear models. *Biometrika*. 1986;**73**(1):13–22.
- Hedeker D, Gibbons RD. Longitudinal data analysis. Hoboken, New Jersey: John Wiley & Sons; 2006.
- Twisk JWR. Applied longitudinal data analysis for epidemiology. A practical guide, Second Edition edn. Cambridge: Cambridge University Press; 2013.
- Twisk JW: Different statistical models to analyze epidemiological observational longitudinal data: an example from the Amsterdam Growth and Health Study. *Int J Sports Med* 1997, Suppl **3**:S216–S214.
- Elovainio M, Kivimäki M, Vahtera J. Organizational justice: evidence of a new psychosocial predictor of health. *Am J Public Health*. 2002;**92**(1):105–8.

33. Kivimäki M, Elovainio M, Vahtera J, Ferrie JE. Organisational justice and health of employees: prospective cohort study. *Occup Environ Med*. 2003; **60**(1):27–33. discussion 33-24
34. Conway JM, Lance CE. What reviewers should expect from authors regarding common method bias in organizational research. *Journal of Business and Psychology*. 2010;25:325–34.
35. Meade AW, Watson AM, Kroustalis CM. Assessing Common Methods Bias in Organizational Research. In: *Paper presented at the 22nd Annual Meeting of the Society for Industrial and Organizational Psychology*. New York; 2007.
36. Bockerman P, Bryson A, Ilmakunnas P. Does high involvement management improve worker wellbeing? *Journal of Economic Behavior and Organization*. 2012;84(6):660–80.
37. Elovainio M, Kivimäki M, Helkama K. Organization justice evaluations, job control, and occupational strain. *J Appl Psychol*. 2001;86(3):418–24.
38. Kivimäki M, Elovainio M, Vahtera J, Virtanen M, Stansfeld SA. Association between organizational inequity and incidence of psychiatric disorders in female employees. *Psychol Med*. 2003;33(2):319–26.
39. Lang J, Bliese PD, Lang JW, Adler AB. Work gets unfair for the depressed: cross-lagged relations between organizational justice perceptions and depressive symptoms. *J Appl Psychol*. 2011;96(3):602–18.
40. Oyeflaten I, Hysing M, Eriksen HR. Prognostic factors associated with return to work following multidisciplinary vocational rehabilitation. *J Rehabil Med*. 2008;40(7):548–54.
41. Svedberg P, Ropponen A, Lichtenstein P, Alexanderson K. Are self-report of disability pension and long-term sickness absence accurate? Comparisons of self-reported interview data with national register data in a Swedish twin cohort. *BMC Public Health*. 2010;10:763.
42. van Poppel MN, de Vet HC, Koes BW, Smid T, Bouter LM. Measuring sick leave: a comparison of self-reported data on sick leave and data from company records. *Occup Med (Lond)*. 2002;52(8):485–90.
43. Fredriksson K, Toomingas A, Torgen M, Thorbjörnsson CB, Kilbom A. Validity and reliability of self-reported retrospectively collected data on sick leave related to musculoskeletal diseases. *Scand J Work Environ Health*. 1998;24(5):425–31.
44. Ferrie JE, Kivimäki M, Head J, Shipley MJ, Vahtera J, Marmot MG. A comparison of self-reported sickness absence with absences recorded in employers' registers: evidence from the Whitehall II study. *Occup Environ Med*. 2005;62(2):74–9.
45. Colquitt JA, Scott BA, Rodell JB, Long DM, Zapata CP, Conlon DE, Wesson MJ. Justice at the millennium, a decade later: a meta-analytic test of social exchange and affect-based perspectives. *J Appl Psychol*. 2013;98(2):199–236.
46. Skarlicki DP, Latham GP. How Can Training Be Used to Foster Organizational Justice? In: *Handbook of Organizational Justice*. edn. Edited by Greenberg J, Colquitt JA. Mahwah, NJ: Lawrence Erlbaum Associates; 2005. p. 499–522.

Submit your next manuscript to BioMed Central and we will help you at every step:

- We accept pre-submission inquiries
- Our selector tool helps you to find the most relevant journal
- We provide round the clock customer support
- Convenient online submission
- Thorough peer review
- Inclusion in PubMed and all major indexing services
- Maximum visibility for your research

Submit your manuscript at
www.biomedcentral.com/submit

