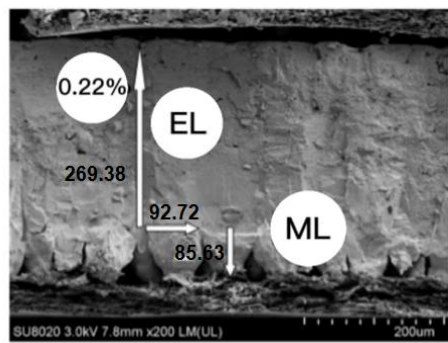
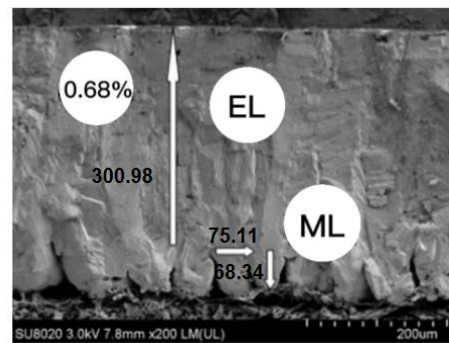


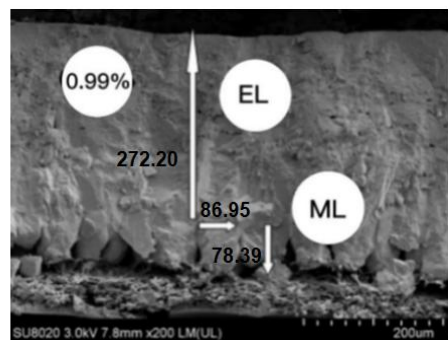
(A)



(B)



(C)



Supplement 1. Effect of dietary sodium sulfate (Na_2SO_4) supplementation on the eggshell ultrastructure of laying hens fed the experimental diets (scanning electron microscope images, magnification, 200 \times). The three treatment groups were fed corn–soybean meal diets supplemented with 0.22%, 0.68%, or 0.99% Na_2SO_4 . EL, effective layer; ML, mammillary layer.