

# The Secretome of Alginate-Encapsulated Limbal Epithelial Stem Cells Modulates Corneal Epithelial Cell Proliferation

Bernice Wright<sup>1</sup>, Andrew Hopkinson<sup>2</sup>, Martin Leyland<sup>3</sup>, Che J. Connon<sup>1\*</sup>

**1** University of Reading, School of Pharmacy, Reading, Berkshire, United Kingdom, **2** University of Nottingham, Division of Ophthalmology and Visual Sciences, Queen's Medical Centre Campus, Nottingham, United Kingdom, **3** Royal Berkshire Hospital, Reading, Berkshire, United Kingdom

## Abstract

Limbal epithelial stem cells may ameliorate limbal stem cell deficiency through secretion of therapeutic proteins, delivered to the cornea in a controlled manner using hydrogels. In the present study the secretome of alginate-encapsulated limbal epithelial stem cells is investigated. Conditioned medium was generated from limbal epithelial stem cells encapsulated in 1.2% (w/v) calcium alginate gels. Conditioned medium proteins separated by 1-D gel electrophoresis were visualized by silver staining. Proteins of interest including secreted protein acidic and rich in cysteine, profilin-1, and galectin-1 were identified by immunoblotting. The effect of conditioned medium (from alginate-encapsulated limbal epithelial stem cells) on corneal epithelial cell proliferation was quantified and shown to significantly inhibit ( $P \leq 0.05$ ) their growth. As secreted protein acidic and rich in cysteine was previously reported to attenuate proliferation of epithelial cells, this protein may be responsible, at least in part, for inhibition of corneal epithelial cell proliferation. We conclude that limbal epithelial stem cells encapsulated in alginate gels may regulate corneal epithelialisation through secretion of inhibitory proteins.

**Citation:** Wright B, Hopkinson A, Leyland M, Connon CJ (2013) The Secretome of Alginate-Encapsulated Limbal Epithelial Stem Cells Modulates Corneal Epithelial Cell Proliferation. PLoS ONE 8(7): e70860. doi:10.1371/journal.pone.0070860

**Editor:** Irina Kerkis, Instituto Butantan, Brazil

**Received:** April 30, 2013; **Accepted:** June 27, 2013; **Published:** July 24, 2013

**Copyright:** © 2013 Wright et al. This is an open-access article distributed under the terms of the Creative Commons Attribution License, which permits unrestricted use, distribution, and reproduction in any medium, provided the original author and source are credited.

**Funding:** The work was supported by the Medical Research Council. Grant Ref: G/0900877; URL: <http://www.mrc.ac.uk/index.htm>. The funders had no role in study design, data collection and analysis, decision to publish, or preparation of the manuscript.

**Competing Interests:** The authors have declared that no competing interests exist.

\* E-mail: [c.j.connon@reading.ac.uk](mailto:c.j.connon@reading.ac.uk)

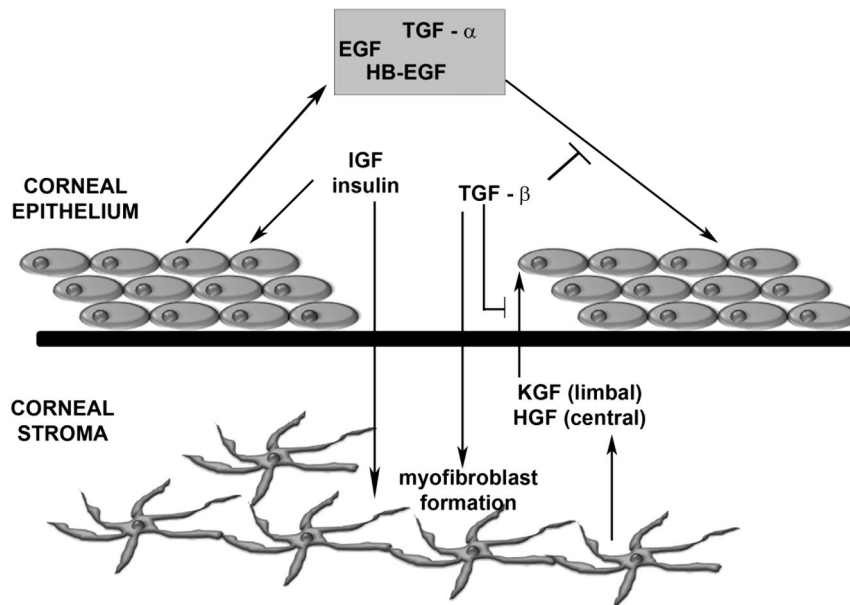
## Introduction

Damage to the limbal region of the cornea can reduce or destroy the resident population of limbal epithelial stem cells (LESC) responsible for replenishing the corneal epithelium, consequently leading to limbal stem cell deficiency (LSCD) [1–2], and persistent epithelial defects resulting in visual loss and blindness. An established therapy for LSCD involves the transplantation of LESCs expanded *ex vivo* on a human amniotic membrane (AM) carrier [2–7]. The outcomes from this therapy are, however, variable and due to lengthy pre-clinical manufacturing procedures, requiring specialised GMP facilities, it is economically costly to generate therapeutic LESCs. Therefore, there is a need to refine current therapy for LSCD to enhance clinical predictability, practicability and economic viability. Understanding the mechanisms by which LESCs repair the damaged cornea is possible using hydrogel matrices as cell-encapsulation devices. Furthermore, these constructs may allow significant improvements in the treatment of LSCD by reducing the length of pre-clinical procedures and allowing controlled release of factors secreted from immobilized LESCs to the injured cornea. The premise of the present study is that alginate-encapsulated LESCs can secrete growth factor-like peptides which migrate through the gel micro-architecture to mediate regeneration of the damaged corneal surface.

There is little available evidence that cell-cell interactions of transplanted cells drive the healing process. Daya *et al.* (2005)

[8] indicated that transplanted LESCs may not be incorporated into the exposed, de-epithelialised corneal stromal bed after transplantation. Instead, an established body of evidence demonstrates that corneal wound healing is heavily dependent on growth factors (e.g. epidermal growth factor, keratinocyte growth factor, hepatocyte growth factor) produced by resident differentiated epithelial cells and stromal keratocytes [9–11] (Figure 1). Therefore proteins secreted by LESCs may be responsible for facilitating epithelial repair. This suggests that studying the secretome of LESCs may hold the key to elucidating the mechanism of corneal repair.

The therapeutic importance of the stem cell secretome has recently been highlighted in a number of studies. Specifically, factors released from progenitor cells were reported to beneficially modulate degenerative conditions. For example, mesenchymal stem cell (MSC)-derived molecules were demonstrated to mediate angiogenesis [12–13]. Furthermore, trophic and immunomodulatory cytokines secreted from MSC were reported to reverse hepatic failure [14] and were shown to be a potentially effective treatment for ischaemic heart disease [15], as well as regeneration of the central nervous system [16]. Trophic effects of adipose stem cell (ASC) secreted factors (e.g. granulocyte and macrophage colony stimulating factors, interleukins, adipokines) are also protective, and they induce cell differentiation and immunomodulatory effects on a range of endogenous cells/tissues [17]. The ASC secretome is known to impact on the immune and central nervous system, vascular-



**Figure 1. Corneal wound healing.** A number of growth factors and cytokines are released following epithelial injury in the cornea. These factors mediate the epithelial-stromal interactions that are critical for wound healing. Keratinocyte growth factor (KGF) and hepatocytes growth factor (HGF) are produced by stromal keratocytes, and interleukin-1 (IL-1) and platelet-derive growth factor (PDGF) are secreted by epithelial cells to regulate stromal responses to injury. Epidermal growth factor (EGF), IGF and transforming growth factor  $\beta$  (TGF- $\beta$ ) play roles in both epithelium and stromal repair. Cross-talk between these factors ultimately determines the outcome of corneal wound healing.  
doi:10.1371/journal.pone.0070860.g001

ization and cardiac regeneration [17]. Paracrine factors secreted from ASC were shown to lead to distinct effects on the metabolic viability and neuronal cell densities in primary cultures of hippocampal neurons [18]. Effects of the embryonic stem cell (ESC) secretome are less well-characterised than those of MSC and ASC, but profiles of proteins secreted during differentiation of murine ESC were previously reported to be distinct during cardiomyogenesis and neurogenesis [19].

Considering this evidence, in the present study we demonstrate that the conditioned medium generated from primary human LESC immobilized in alginate gels significantly attenuated the proliferation of corneal epithelial cells. We show distinct protein banding patterns between alginate-encapsulated and isolated LESC that highlight differences between proteins at approximately 35, 38, 43 and 55 kDa. We identified secreted proteins that have been reported to both drive (profilin-1 - 12 kDa and galectin-1 - 12–15 kDa) and inhibit (sPARC - 43 kDa) proliferation of epithelial cells. To our knowledge, this is the first study to examine the secretome of LESC.

This research indicates that a pharmacological approach to the treatment of LSCD may be devised by employing the factors that they secrete rather than the cells per se, and that this may eliminate the problems with variability encountered with current therapy for this condition.

## Materials and Methods

### Ethics Statement

Corneoscleral rims were obtained from human cadavers from the Royal Berkshire Hospital following corneal transplants, and used for experiments with approval from the University of Reading Research Ethics Committee. Informed, written consent from the donor or the next of kin was obtained for use of these samples in research.

### Materials

Antibiotics (penicillin/streptomycin, amphotericin B), Whatman chromatography paper, Trypan Blue, Tris-base, acrylamide, acutase, acetic acid, polyvinylidene difluoride (PVDF) membrane and methanol were purchased from Thermo Scientific HyClone (Fisher Scientific: Leicestershire, UK). CnT20 medium was obtained from CellnTec (Advanced Cell Systems: Buckingham, UK). Sodium alginate (viscosity: 15–20 cP, 1% in H<sub>2</sub>O (lit.)), calcium chloride, sodium citrate and sodium chloride were from (Sigma-Aldrich: Poole, UK). Tween<sup>®</sup>-20, sodium dodecyl sulphate (SDS), 2-mercaptoethanol, ammonium persulphate (AMPS), N,N,N',N'-tetramethylethylenediamine (TEMED), ethylenediaminetetraacetic acid (EDTA), 2-[2-(4-nonylphenoxy)ethoxy]ethanol (igepal - nonidet P40 (NP40)), phenylmethanesulphonyl fluoride (PMSF), aprotinin, leupeptin, sodium orthovanadate, pepstatin A, silver nitrate, sodium carbonate, sodium acetate, and sodium thiosulphate were also purchased from Sigma. The immortalized human corneal epithelial (HCE) cell-line was from RIKEN BioResource Center (Tsukuba, Ibaraki, Japan) and the human corneoscleral rims were kindly donated by the Royal Berkshire Hospital (Dr Martin Leyland) following cornea transplantations. The enhanced chemiluminescence (ECL) detection system was obtained from Pierce (Thermo Fisher Scientific; Rockford, IL USA). The 14-3-3 $\zeta$  antibody was from Santa Cruz Biotechnology (Autogen Bioclear Ltd.: Calne, Wilts, UK), the p63 antibody was purchased from Millipore (Dundee, Scotland). sPARC and profilin-1 antibodies were from New England Biolabs (Cell Signaling technology: Hertfordshire, UK). Horseradish peroxidase (HRP)-conjugated anti-rabbit and anti-goat secondary antibodies, galectin-1 antibodies were from R&D systems (Abingdon, UK) and bovine serum albumin was obtained from First Link (Birmingham, UK).

## Methods

**Isolation of human limbal epithelial cells.** LESC were isolated from human corneoscleral rims. Briefly, explants were cultured in CnT20 medium, LESC outgrowths from explants were detached from tissue culture plants using acutase, and these cells were counted before encapsulation in alginate gels.

**Production of Conditioned Medium from Alginate-Encapsulated LESC.**  $3 \times 10^5$  primary LESC were suspended in 1.2% w/v sodium alginate solution (420  $\mu$ L) before gelling into discs as previously described [20] using 102 mM  $\text{CaCl}_2$ . Briefly, to form gel discs, a paper ring with a 2 cm diameter opening was placed over a 3 cm diameter paper disc, and saturated with 102 mM  $\text{CaCl}_2$  before pipetting 420  $\mu$ L alginate solution into the ring (Figure 2). A second 3 cm diameter paper disc saturated with 102 mM  $\text{CaCl}_2$  was placed over the alginate/paper assembly. Alginate solutions were exposed to 102 mM  $\text{CaCl}_2$  for 10 min to allow complete gelation. Calcium alginate discs with or without LESC were suspended in CnT20 medium under and cultured at 37°C, 5%  $\text{CO}_2$ , 95% humidity for 3 days.

Conditioned medium (CM) was prepared from both alginate-encapsulated and non-encapsulated LESC ( $3 \times 10^5$  cultured on tissue culture plastic in CnT20 for 3 days). After the 3-day culture period, CM from alginate-encapsulated and non-encapsulated LESC was collected and centrifuged at 15500 g for 10 min to remove cellular debris. The supernatant was retained and the pellet discarded. CM generated from individual corneoscleral rims was not pooled and each sample represented a separate biological replicate.

**Culture of a human corneal epithelial cell-line in LESC conditioned medium.** The human corneal epithelial (HCE) cell-line [21] (referred to as corneal epithelial cells: CEC) was cultured in  $\text{CM}^{\text{ALG-LESC}}$  and  $\text{CM}^{\text{LESC}}$  on tissue culture plastic for approximately 3 days to monitor the ability of these cells to attach, form colonies and proliferate. CnT20 medium incubated with alginate gels alone ( $\text{CM}^{\text{ALG}}$ ), CnT20 cultured without cells ( $\text{CM}^{\text{CULT}}$ ), and non-cultured CnT20 ( $\text{CM}^{\text{NON-CULT}}$ ) were used to culture CEC as experimental controls. CEC were isolated from culture medium after the 3-day culture period, and the Trypan

blue exclusion assay was performed to assess cell viability and proliferation. A 10  $\mu$ L cell suspension was mixed with 10  $\mu$ L Trypan blue dye solution, before counting live (unstained) and dead (stained-blue) cells using a haemocytometer.

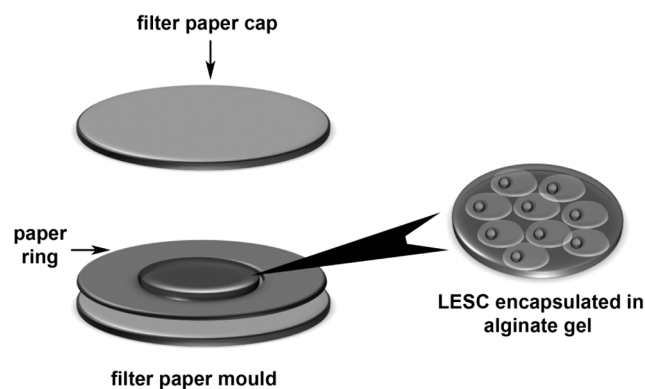
**One Dimensional Gel Electrophoresis.** Sodium dodecyl sulphate - polyacrylamide gel electrophoresis (SDS-PAGE) was carried out in discontinuous vertical slab gels which contained a final concentration of 15% v/v acrylamide in the resolving gel and 4% (v/v) acrylamide in the stacking gel. The stacking gel contained stacking gel buffer (0.5 M Tris-base; pH 6.8), 30% (v/v) acrylamide, 10% (w/v) SDS, 0.05% (v/v) TEMED and 1.5% (w/v) AMPS. The resolving gel comprised resolving gel buffer (3 M Tris-base and 5 N HCl; pH 8.8), 30% (v/v) acrylamide, 10% (w/v) SDS, 0.08% (v/v) TEMED and 1.5% (w/v) AMPS. The amount of total protein in LESC lysates and CM samples was quantified using the modified Lowry protein assay, and samples were prepared by addition of an equal volume of Laemmli reducing sample-treatment buffer (RSTB: 4% (w/v) SDS, 10% (v/v) 2-mercaptoethanol, 20% (v/v) glycerol, 0.5 M Tris-base and 0.001% (w/v) bromophenol blue) to solutions of lysed cells and CM (1:1). RSTB-treated samples (10  $\mu$ g total protein per sample) were loaded onto the stacking gel and separated in resolving gels using 100 V per gel. Gels were then either silver stained or immunoblotted.

## Silver nitrate protein staining

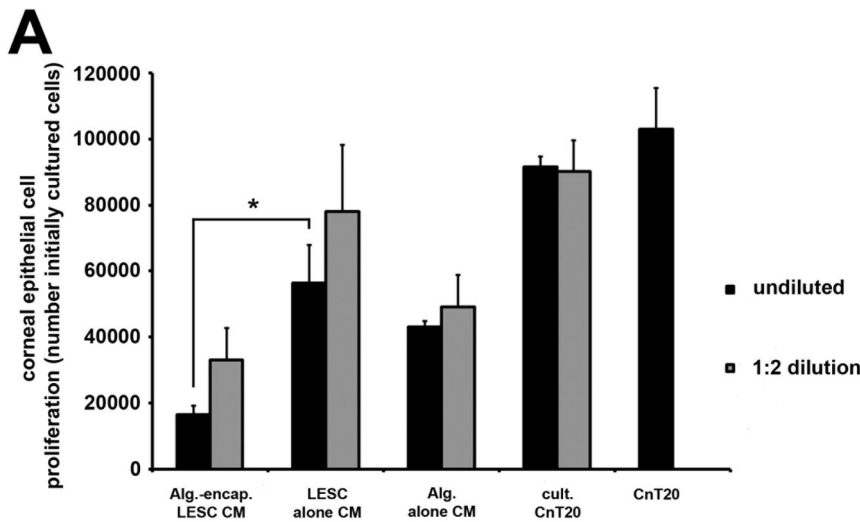
Proteins from LESC CM were stained with silver nitrate. Briefly, proteins immobilized in 15% v/v acrylamide gels were fixed in a solution containing 40% (v/v) methanol, 10% (v/v) acetic acid and 50% (v/v) water. Gels were then washed 3 times for 5 min each time before proteins were sensitized (5% (w/v) sodium thiosulphate, 30% (v/v) ethanol and 68 mg/mL sodium acetate) for 30 min. The gel was then washed 3 times with deionised water for 10 min each time, and stained with 2.5% (w/v) silver nitrate for 20 min. Stained gels were washed twice with deionised water (2 min per wash, and the silver stain was developed using a solution of 2.5% (w/v) sodium carbonate and 0.04% (v/v) formaldehyde. When protein bands were visible, development of the stain was stopped using a 1.46% (w/v) EDTA- $\text{Na}_{22}\text{H}_2\text{O}$  solution. The stained gels were washed with water imaged using a GE Healthcare gel scanner densitometer and ImageQuant software. Gels were stored in 5% (v/v) acetic acid at 4°C.

## Immunoblotting

Proteins were transferred from SDS-PAGE gels to PVDF membranes under semi-dry conditions using 200 V per gel for 2 h. Non-specific binding to membranes was blocked by incubation with 5% (w/v) bovine serum albumin (BSA) dissolved in  $1 \times$  TBS-T (20 mM Tris-base, 0.14 M NaCl, 0.1% Tween<sup>®</sup>-20; pH 7.6) for 1 h at room temperature. Membranes were incubated with primary antibodies (anti-p63 1/8000 dilution), anti-sPARC, anti-galectin-1, and anti-profilin-1) diluted in 2% (w/v) BSA dissolved in  $1 \times$  TBS-T at 4°C overnight.  $\beta$ -mercaptoethanol stripping buffer was used to remove the primary p63 antibody from membranes before an anti-14-3-3 $\zeta$  antibody (1/4000 dilution) was used to detect 14-3-3 $\zeta$  (loading control). Blots were washed for 45 min in  $1 \times$  TBS-T before incubation with HRP-conjugated anti-rabbit (1/4000 dilution) secondary antibody for 2 h at room temperature with rotation. Proteins were detected on X-ray film using an ECL system; the film was exposed to membranes for 5–10 seconds to capture protein/ECL signals.



**Figure 2. Schematic of LEC encapsulation in alginate gels.** To form alginate gel discs, a paper ring with a 2 cm diameter opening is placed over a 3 cm diameter paper disc, and saturated with 102 mM  $\text{CaCl}_2$  before alginate solution (420  $\mu$ L) was pipetted into the ring. A second 3 cm diameter paper disc saturated with 102 mM  $\text{CaCl}_2$  was placed over the alginate/paper assembly. Alginate solutions were exposed to 102 mM  $\text{CaCl}_2$  for 10 min to allow complete gelation. Dimensions of calcium alginate gel masses and discs. Calcium alginate gel discs are approximately 19 mm in length and 1.5 mm in depth. doi:10.1371/journal.pone.0070860.g002



**Figure 3. LESC conditioned medium modulates corneal epithelial cell proliferation.** Data points represent the mean ( $n=3 \pm \text{S.E.M.}$ ) number live cells extracted. \*  $P \leq 0.05$  indicate differences between culture conditions. doi:10.1371/journal.pone.0070860.g003

### Statistical Analysis

Unpaired t-tests were performed using Microsoft Excel to determine the statistical significance between CEC proliferation in conditioned medium from alginate-encapsulated and non-encapsulated LESC. Results are presented as the mean of three individual experiments with standard error of mean (S.E.M.) and  $P$ -value  $\leq 0.05$  considered significant.

## Results and Discussion

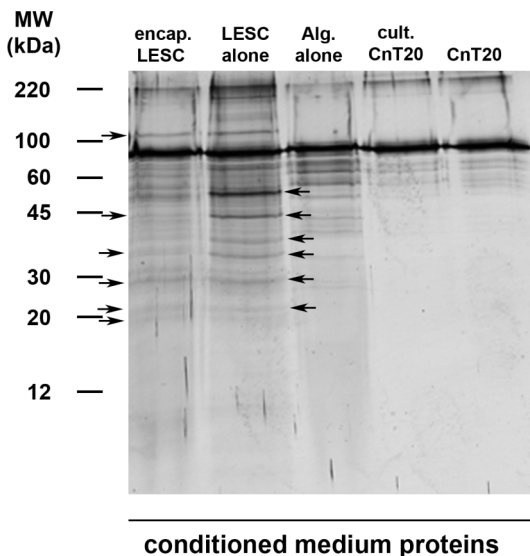
### Corneal epithelial cell proliferation is modulated by CM from alginate-encapsulated LESC

We have previously demonstrated that calcium alginate gels are suitable for storage/transport of immobilized embryonic stem cells, mesenchymal stem cells, and LESC [20,22], proving that these 3-D matrices are capable of retaining the progenitor phenotype of encapsulated cells.

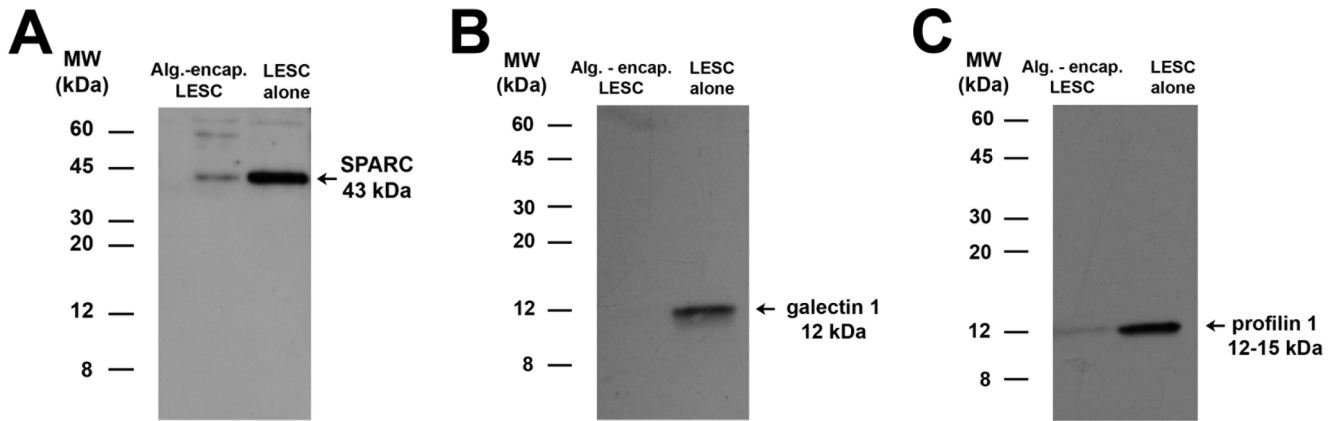
To determine the influence of the alginate gel matrix on the production of potential corneal wound healing factors from LESC, we examined the ability of CEC to proliferate in CM generated from alginate-encapsulated LESC ( $\text{CM}^{\text{ALG-LESC}}$ ) (Figure 3). Proliferation of CEC was attenuated significantly ( $P \leq 0.05$ ) (>2 fold) in undiluted CM from  $\text{CM}^{\text{ALG-LESC}}$  compared to CEC cultured in CM from non-encapsulated LESC ( $\text{CM}^{\text{LESC}}$ ). The addition of CnT20 to  $\text{CM}^{\text{ALG-LESC}}$  and  $\text{CM}^{\text{LESC}}$  increased CEC proliferation, but CEC growth remained significantly lower in  $\text{CM}^{\text{ALG-LESC}}$ . This indicated that despite the inclusion of growth promoting factors from CnT20 medium, inhibition of CEC growth in  $\text{CM}^{\text{ALG-LESC}}$  was not completely reversed.

The proliferation of CEC in  $\text{CM}^{\text{ALG}}$  was less pronounced than CEC proliferation in cultured CnT20 ( $\text{CM}^{\text{CULT}}$ ) or non-cultured CnT20 ( $\text{CM}^{\text{NON-CULT}}$ ). The basal media CnT20 contains factors known to promote CEC proliferation, therefore the decrease in proliferation of CEC in  $\text{CM}^{\text{ALG}}$  compared to  $\text{CM}^{\text{CULT}}$  or  $\text{CM}^{\text{NON-CULT}}$  may be due to the sequestering of factors from CnT20 medium by the alginate gel that we have shown is capable of adsorbing proteins from medium solutions (Table S1). Protein levels were significantly greater ( $P \leq 0.05$ ) in alginate gels suspended in CnT20 medium with supplements ( $97 \pm 0.007 \mu\text{g/mL}$ ) than those suspended in basal medium ( $75 \pm 0.004 \mu\text{g/mL}$ ) (Table S1).

Protein adsorption to alginate hydrogels was previously reported [23]. Therefore, diluting the  $\text{CM}^{\text{ALG}}$  with fresh CnT20 partially replenishes some of the growth factors explaining the moderate increase in proliferation. Interestingly, CEC proliferation in  $\text{CM}^{\text{ALG-LESC}}$ , was significantly lower ( $P \leq 0.01$ ) than that from  $\text{CM}^{\text{ALG}}$ , strongly suggesting that either a factor inhibitory to proliferation was produced by encapsulated LESC or that expression and/or release of factors required for promoting CEC proliferation were prevented by the 3D gel structure.



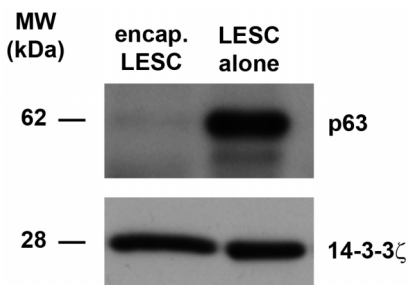
**Figure 4. Profiles of secreted proteins from alginate-encapsulated and cultured LESC are distinct.** Conditioned medium from alginate-encapsulated LESC ( $\text{CM}^{\text{ALG-LESC}}$ ), LESC cultured in CnT20 ( $\text{CM}^{\text{LESC}}$ ), alginate gels alone ( $\text{CM}^{\text{ALG}}$ ), cultured CnT20 ( $\text{CM}^{\text{CULT}}$ ), and non-cultured CnT20 ( $\text{CM}^{\text{NON-CULT}}$ ) were treated with Laemmli buffer containing the reducing agent  $\beta$ -mercaptoethanol. Treated protein mixtures were separated using 15% acrylamide gels and proteins were stained using silver nitrate. Gel represents 3 individual experiments from 3 different corneoscleral rims. doi:10.1371/journal.pone.0070860.g004



**Figure 5. Proteins known to modulate cell proliferation are identified within the LESC secretome.** SPARC (A), galectin 1 (B), and profilin 1 (C) were detected in conditioned medium from alginate-encapsulated LESC ( $CM^{ALG-LESC}$ ) and LESC ( $CM^{LESC}$ ) cultured in CnT20 for 3 days under cell culture conditions by immunoblotting. Blots represent 3 individual experiments from 3 different corneoscleral rims. doi:10.1371/journal.pone.0070860.g005

Previously we reported that the proliferation of LESC immobilized in alginate gels is limited or prevented [20]. This was possibly due to mechanical forces exerted on encapsulated LESC, i.e. cells are physically prevented from growing (possibly due to pore sizes which were significantly smaller than the size of cells or inappropriate levels of gel stiffness); an increase in the compressive modulus of alginate gels decreased the viability of immobilized cells [20]. Studies have shown that the movement of small-molecules through alginate gels is controlled by the internal structure of these matrices [24]. Increasing alginate concentration from 1.5% to 3%, decreasing intrinsic pore size, was previously shown to hinder the movement of various solutes through this gel. Therefore, an alternative explanation may be that factors required for proliferation of CEC are released too slowly from alginate gels. The release of proteins or peptides from alginate encapsulated LESC may be dependent on their size, with larger proteins migrating at a slower rate through gels than peptides of relatively lower molecular mass.

Taken together the data presented here suggest that LESC encapsulated in an alginate gel matrix secrete factors that can attenuate the growth of a secondary cell population.



**Figure 6. Cultured LESC retain a progenitor phenotype.** P63 was detected in freshly isolated LESC (control: C), alginate-encapsulated LESC (Alg) and LESC cultured (Cult) in CnT20 for 3 days under cell culture conditions by immunoblotting. 14-3-3zeta was used as a loading control. Blots represent 3 individual experiments from 3 different corneoscleral rims. doi:10.1371/journal.pone.0070860.g006

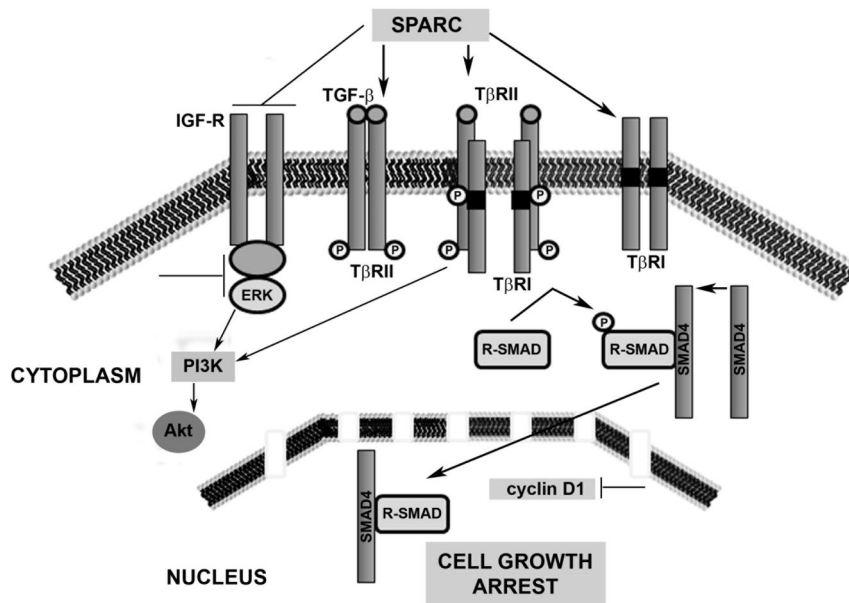
### Proteins that regulate epithelial cell proliferation are identified within the LESC secretome

To determine the possibility that factors secreted from LESC may be responsible for the observed inhibitory effect on CEC proliferation, we performed biochemical characterisation of  $CM^{ALG-LESC}$ .

Examination of the LESC secretome by 1-D gel electrophoresis and silver staining resolved distinct protein banding patterns from  $CM^{ALG-LESC}$  and  $CM^{LESC}$  (Figure 4). The amount of total protein loaded onto gels were equivalent to 10 µg for each sample, therefore differences observed between samples are not biased by unequal protein loading. Proteins (indicated on Figure 4 with arrows) ranging from approximately 35–55 kDa were expressed at lower levels in  $CM^{ALG-LESC}$  than from  $CM^{LESC}$ . At lower molecular weights 30–20 kDa protein bands from both  $CM^{ALG-LESC}$  and  $CM^{LESC}$ , are expressed to similar levels. Proteins included into CnT20 medium as supplementary factors (approximately 55 – 80 kDa) were expressed to greater levels in  $CM^{ALG}$ , than in  $CM^{CULT}$  or  $CM^{NON-CULT}$ , suggesting that medium proteins within the CnT20 basal media may be both concentrated and adsorbed (see Figure 3) by alginate gels.

We hypothesise that proteins ranging from approximately 35–55 kDa which varied in levels due to encapsulation within alginate gels may elicit effects on epithelial cell growth. We used previous studies investigating the secretome of epithelial cells from non-pigmented ciliary [25] and mammary tissue [26] as mining references for proteins of potential relevance to corneal wound healing. The secretome of non-pigmented ciliary epithelium was of particular interest as this group of proteins was studied as candidate factors for promoting differentiation and growth of retinal ganglion cells [25]. Based on this study we focused on identifying thrombospondin 1, galectin-1, secreted protein, acidic and rich in cysteine (sPARC), cofilin-1, profilin-1, and myotrophin in  $CM^{ALG-LESC}$ , as these proteins play important roles in cell proliferation and/or differentiation.

We identified by Western blotting, sPARC, profilin-1, and galectin-1 in the  $CM^{ALG-LESC}$  and  $CM^{LESC}$  (Figure 5). Samples were equally loaded: 10 µg total protein from  $CM^{LESC-ALG}$  and  $CM^{LESC}$  were loaded separately onto gels. sPARC (Figure 5A), a 43 kDa protein (see 43 kDa band indicated on Figure 4), that was identified in  $CM^{LESC-ALG}$  and  $CM^{LESC}$  was particularly interesting due to well-characterised functions as a growth factor modulator and cell cycle inhibitor [27]. sPARC may therefore,



**Figure 7. A working model of LEC secretome mechanisms for the modulation of epithelial cell proliferation.** SPARC may inhibit corneal epithelial cell proliferation by targeting IGF, TGF- $\beta$  and Smad2/3 signalling that is established in corneal wound healing. In the corneal epithelium, sPARC may inhibit the IGF receptor and activate the TGF- $\beta$ . Inhibition of epithelium turnover may occur through sPARC-mediated attenuation of extracellular regulated kinase (ERK), phosphoinositide-3-kinase (PI3K) and Akt in the cytoplasm leading to reduction in the activity of the cell cycle regulator, cyclin D1 in the nucleus.  
doi:10.1371/journal.pone.0070860.g007

be responsible, at least in part, for the marked inhibition of CEC proliferation in  $CM^{LESC-ALG}$ . However, the greater proliferation of CEC in  $CM^{LESC}$  than  $CM^{ALG-LESC}$  may be due to galectin-1 (Figure 5B) that induces cell proliferation [28]. This protein was highly expressed in  $CM^{LESC}$  but was not expressed in  $CM^{ALG-LESC}$ .

Encapsulated LESC expressed the progenitor marker, p63, (Figure 6) to lower levels than cultured LESC indicating that these cells were potentially undergoing differentiation within alginate gels. Profilin-1 (Figure 5C) that was shown to be secreted by  $CM^{ALG-LESC}$  was recently demonstrated as an essential element for the differentiation of human epithelial cells [29]. Alginate-encapsulated LESC may be at various stages of differentiation dependent on surrounding levels of profilin-1. Although the secreted lectin, galectin-1 (Figure 5B) was not identified in  $CM^{ALG-LESC}$ , this protein may also drive differentiation of corneal epithelial cells.

sPARC may regulate the differentiation of epithelial cells as well as the inhibition of these cells during corneal wound healing. Disruption of the sPARC locus in mice with sPARC-null lens resulted in altered lens development manifested by changes in epithelial cell differentiation [30]. sPARC was reported to be secreted from corneal epithelial cells, but this protein was only shown to regulate the contraction of keratocytes embedded in collagen gels [31]. Similar to our study, this study confirmed using Western blot analysis that sPARC was contained in epithelial cell conditioned medium. The authors reported that collagen gel contraction by keratocytes with increased contractility due to addition of purified sPARC was enhanced in a dose-dependent manner. Furthermore, sPARC was identified in the basal layer of the migrating epithelium and activated keratocytes adjacent to the wound 3 days and 1 week after perforating injury in rabbit corneas.

sPARC-mediated mechanisms for inhibition of CEC proliferation may involve inhibition of IGF-dependent signalling [10] and stimulation of the TGF- $\beta$  signalling pathway [32] both at the receptor level and within cells. sPARC has been reported to inhibit epithelial cell proliferation by stimulating the TGF- $\beta$  signalling system [32], and this effect is corroborated by the Mishima *et al.* (1998) [31] study that describes a direct effect of sPARC on fibroblasts, i.e. scar contraction. As TGF- $\beta$  transforms stromal keratocytes into myofibroblasts that are the primary mediators of scar formation [11], it is thought that reducing levels of sPARC in the cornea could limit or eliminate scar formation and enhance closure of corneal epithelial wounds.

Reports showing sPARC inhibition of IGF signalling demonstrated that sPARC-null mesangial cells producing increased amounts of IGF-1 and -2, as well as IGF-1 receptor (IGF-1R) were attenuated by the addition of recombinant sPARC [10]. The secreted protein inhibited sPARC-null cells by blocking IGF-1-stimulated mitogen activated protein kinase (MAPK) activation and DNA synthesis. An accelerated rate of basal and IGF-1-stimulated proliferation in mesangial cells derived from sPARC-null animals was shown to be partially due to significantly diminished levels of cyclin D1 and the cyclin-dependent kinase (CDK) inhibitors p21 and p27. As IGF signalling in the cornea stimulates epithelial cell proliferation [33], sPARC is likely to play dual complementary roles in corneal wound healing that culminate in inhibition of epithelium turnover and reinforcement of scar tissue.

A working model (Figure 7) of novel wound healing processes in the cornea could be developed, demonstrating that sPARC affects intracellular events downstream of TGF- $\beta$  and IGF receptors by directly targeting these membrane proteins and subsequently downstream signalling proteins within cells including ERK, PI3K and Akt as well as cell cycle regulator, cyclin D1.

Together, these mechanistic events may be the drivers that ultimately lead to growth arrest of CEC.

Collectively, these data suggest that the secretome of alginate-encapsulated LESC may be applied to corneal dysfunctions requiring control of the growth of epithelium.

## Conclusions

We have demonstrated that LESC secrete proteins that exert powerful effects on corneal epithelial growth. Our alginate gel matrix allows the secretion of inhibitory proteins from encapsulated LESC that may regulate epithelialisation of the cornea. Corneal wound healing is complex and stringently regulated, but we describe findings that indicate the potential for delivering molecules produced from LESC to modulate repair of the injured cornea using bioartificial alginate hydrogel systems. These gels are very accessible for this application, as selection of the type of alginate and coating agent, the pore size, and gel degradation rate, would ultimately control release kinetics of cell-derived soluble factors. Therefore these matrices as bioartificial niche micro-

environments can be applied to clinical distribution of endogenous LESC-derived proteins in a manner that mimics their physiological rate of release. The present study may lead to the discovery of novel facets of corneal wound healing dynamics that may be dependent on secreted proteins derived from both terminally-differentiated and progenitor corneal epithelial cells.

## Supporting Information

**Table S1 Alginate gels adsorb proteins from CnT20 medium.** Samples represent the mean ( $n = 3 \pm S.E.M.$ ) amount of protein from supplemented and basal CnT20 medium and alginate gels suspended in those media. (DOCX)

## Author Contributions

Conceived and designed the experiments: BW CJC. Performed the experiments: BW. Analyzed the data: BW. Contributed reagents/materials/analysis tools: ML AH. Wrote the paper: BW AH CJC.

## References

- Davanger M, Evensen A (1971) Role of the pericorneal papillary structure in renewal of corneal epithelium. *Nature* 229: 560–561.
- Tseng SC, Chen SY, Shen YC, Chen WL, Hu FR (2010) Critical appraisal of ex vivo expansion of human limbal epithelial stem cells. *Curr Mol Med* 10: 841–850.
- Chen B, Jones RR, Mi S, Foster J, Alcock SG, et al. (2012) The mechanical properties of amniotic membrane influence its effect as a biomaterial for ocular surface repair. *Soft Matter* 8: 8379–8387.
- Pellegrini G, Traverso CE, Franzini AT, Zingirian M, Cancedda R, et al. (1997) Long-term restoration of damaged corneal surfaces with autologous cultivated corneal epithelium. *Lancet* 349: 990–993.
- Kenyon KR, Tseng SC (1989) Limbal autograft transplantation for ocular surface disorders. *Ophthalmology* 96: 709–722.
- Tsai RJ, Tseng SC (1994) Human allograft limbal transplantation for corneal surface reconstruction. *Cornea* 13: 389–400.
- Koizumi N, Inatomi T, Suzuki T, Sotozono C, Kinoshita S (2001) Cultivated corneal epithelial transplantation for ocular surface reconstruction in acute phase of Stevens-Johnson syndrome. *Arch Ophthalmol* 119: 298–300.
- Daya SM, Watson A, Sharpe JR, Gileli O, Rowe A, et al. (2005) Outcomes and DNA analysis of ex vivo expanded stem cell allograft for ocular surface reconstruction. *Ophthalmology* 112: 470–477.
- Yu FS, Yin J, Xu K, Huang J (2010) Growth factors and corneal epithelial wound healing. *Brain Res Bull* 81: 229–235.
- Francki A, Motamed K, McClure TD, Kaya M, Murri C, et al. (2003) SPARC regulates cell cycle progression in mesangial cells via its inhibition of IGF-dependent signaling. *J Cell Biochem* 88: 802–811.
- Jester JV, Barry-Lane PA, Cavanagh HD, Petroll WM (1996) Induction of alpha-smooth muscle actin expression and myofibroblasts transformation in cultured corneal keratocytes. *Cornea* 15: 505–516.
- Estrada R, Li N, Sarojini H, An J, Lee MJ, et al. (2009) Secretome from mesenchymal stem cells induces angiogenesis via Cyr61. *J Cell Physiol* 219: 563–571.
- Li H, Zuo S, He Z, Yang Y, Pasha Z, et al. (2010) Paracrine factors released by GATA-4 overexpressed mesenchymal stem cells increase angiogenesis and cell survival. *Am J Physiol Heart Circ Physiol* 299: H1772–H1781.
- Parekkadan B, van Poll D, Suganuma K, Carter EA, Berthiaume F, et al. (2007) Mesenchymal stem cell-derived molecules reverse fulminant hepatic failure. *PLoSOne* 2: e941.
- Ranganath SH, Levy O, Inamdar MS, Karp JM (2012) Harnessing the mesenchymal stem cell secretome for the treatment of cardiovascular disease. *Cell Stem Cell* 10: 244–258.
- Ribeiro CA, Salgado AJ, Fraga JS, Silva NA, Reis RL, et al. (2011) The secretome of bone marrow mesenchymal stem cells-conditioned media varies with time and drives a distinct effect on mature neurons and glial cells (primary cultures). *J Tissue Eng Regen Med* 5: 668–672.
- Salgado AJ, Reis RL, Sousa NJ, Gimble JM (2010) Adipose tissue derived stem cells secretome: soluble factors and their roles in regenerative medicine. *Curr Stem Cell Res Ther* 5: 103–110.
- Ribeiro CA, Fraga JS, Graos M, Neves NM, Reis RL, et al. (2012) The secretome of stem cells isolated from the adipose tissue and Wharton jelly acts differently on central nervous system derived cell populations. *Stem Cell Res Ther* 3: 18.
- Farina A, D'Aniello C, Severino V, Hochstrasser DF, Parente A, et al. (2011) Temporal proteomic profiling of embryonic stem cell secretome during cardiac and neural differentiation. *Proteomics* 11: 3972–3982.
- Wright B, Cave RA, Cook JP, Khutoryanskiy VV, Mi S, et al. (2012) Enhanced viability of corneal epithelial cells for efficient transport/storage using a structurally-modified calcium alginate hydrogel. *Regen Med* 7: 296–307.
- Araki-Sasaki K, Ohashi Y, Sasabe T, Hayashi K, Watanabe H, et al. (1995) An SV40-immortalized human corneal epithelial cell line and its characterization. *Invest Ophthalmol Vis Sci* 36: 614–621.
- Chen B, Wright B, Sahoo R, Connon CJ (2013) A novel alternative to cryopreservation for the short-term storage of stem cells for use in cell therapy using alginate encapsulation. *Tissue Eng, Part C Methods* [Epub ahead of print].
- Wee S, Gombotz WR (1998) Protein release from alginate matrices. *Adv Drug Deliv Rev* 31: 267–285.
- Li RH, Altrutter DH, Gentile FT (1996) Transport characterization of hydrogel matrices for cell encapsulation. *Biotechnol Bioeng* 50: 365–373.
- Yang MH, Krishnamoorthy RR, Jong SB, Chu PY, Yang YH, et al. (2011) Protein profiling of human nonpigmented ciliary epithelium cell secretome: the differentiation factors characterisation for retinal ganglion cell line. *J Biomed Biotechnol* 2011: 901329.
- Jacobs JM, Waters KM, Kathmann LE, Camp DG II, Wiley HS, et al. (2008) The mammary epithelial cell secretome and its regulation by signal transduction pathways. *J Proteome Res* 7: 558–569.
- Schiemann BJ, Funk SE, Koyama H, Ross R, Raines EW, et al. (2002) Inhibition of PDGF-stimulated and matrix-mediated proliferation of human vascular smooth muscle cells by SPARC is independent of changes in cell shape or cyclin-dependent kinase inhibitors. *J Cell Biochem* 84: 759–771.
- Rabinovich GA (2005) Galectin-1 as a potential cancer target. *Br J Cancer* 92: 1188–1192.
- Wittenmayer N, Jandrig B, Rothkegel M, Schluter K, Arnold W, et al. (2004) Tumor suppressor activity of profilin requires a functional actin binding site. *Mol Biol Cell* 15: 1600–1608.
- Bassuk JA, Birkebak T, Rothmier JD, Clark JM, Bradshaw A, et al. (1999) Disruption of the Sparc locus in mice alters the differentiation of lenticular epithelial cells and leads to cataract formation. *Exp Eye Res* 68: 321–331.
- Mishima H, Hibino T, Hara H, Murakami J, Otori T (1998) SPARC from corneal epithelial cells modulates collagen contraction by keratocytes. *Invest Ophthalmol Vis Sci* 39: 2547–2553.
- Schiemann BJ, Neil JR, Schiemann WP (2003) SPARC inhibits epithelial cell proliferation in part through stimulation of the transforming growth factor-beta-signaling system. *Mol Biol Cell* 14: 3977–3988.
- Shanley IJ, McCaig CD, Forrester JV, Zhao M (2004) Insulin, not leptin, promotes in vitro cell migration to heal monolayer wounds in human corneal epithelium. *Invest Ophthalmol Vis Sci* 45: 1088–1094.