





ORIGINAL RESEARCH

Genetic studies of various *Prosopis* species (Leguminosae, Section *Algarobia*) co-occurring in oases of the Atacama Desert (northern Chile)

Cecilia Bessega^{1,2}  | Carolina Pometti^{1,2}  | René Fortunato^{3,4}  |
Francisca Greene⁵ | Calogero M. Santoro⁶  | Virginia McRostie^{7,8} 

¹Departamento Ecología, Genética y Evolución (EGE), Genética de Especies Leñosas (GEEL), Facultad de Ciencias Exactas y Naturales, Universidad de Buenos Aires, Buenos Aires, Argentina

²Instituto de Ecología, Genética y Evolución (IEGEB), CONICET-Universidad de Buenos Aires, Buenos Aires, Argentina

³Instituto de Recursos Biológicos, CIRN, INTA, CONICET, Buenos Aires, Argentina

⁴ESILyCA, Universidad de Morón, Morón, Argentina

⁵San Pedro De Atacama, Chile

⁶Instituto de Alta Investigación, Universidad de Tarapacá, Arica, Chile

⁷Facultad de Ciencias Sociales, Escuela de Antropología, Pontificia Universidad Católica de Chile, Santiago, Chile

⁸Centro del Desierto de Atacama UC, Santiago, Chile

Correspondence

Cecilia Bessega, Departamento Ecología, Genética y Evolución (EGE), Genética de Especies Leñosas (GEEL), Facultad de Ciencias Exactas y Naturales, Universidad de Buenos Aires, Buenos Aires, Argentina.
Email: cecib@ege.fcen.uba.ar

Funding information

Agencia Nacional de Promoción Científica y Tecnológica (ANPCyT), Argentina, Grant/Award Number: PICT 2016-0388; Universidad de Buenos Aires (UBA), Argentina, Grant/Award Number: UBACYT 20020190200106BA; Agencia Nacional de Investigación y Desarrollo, ANID, Chile, Grant/Award Number: FONDECYT 11180805, 1160045 and ANILLO SOC1405

Abstract

In the Atacama Desert from northern Chile (19–24°S), *Prosopis* (Leguminosae) individuals are restricted to oases that are unevenly distributed and isolated from each other by large stretches of barren landscape constituting an interesting study model as the degree of connectivity between natural populations depends on their dispersal capacity and the barriers imposed by the landscape. Our goal was to assess the genetic diversity and the degree of differentiation among groups of *Prosopis* individuals of different species from Section *Algarobia* and putative hybrids (hereafter populations) co-occurring in these isolated oases from the Atacama Desert and determine whether genetic patterns are associated with dispersal barriers. Thirteen populations were sampled from oases located on three hydrographic basins (Pampa del Tamarugal, Rio Loa, and Salar de Atacama; northern, central, and southern basins, respectively). Individuals genotyped by eight SSRs show high levels of genetic diversity ($H_O = 0.61$, $A_r = 3.5$) and low but significant genetic differentiation among populations ($F_{ST} = 0.128$, $F_{ST-ENA} = 0.129$, $D_{JOST} = 0.238$). The AMOVA indicates that most of the variation occurs within individuals (79%) and from the variance among individuals (21%); almost, the same variation can be found between basins and between populations within basins. Differentiation and structure results were not associated with the basins, retrieving up to four genetic clusters and certain admixture in the central populations. Pairwise differentiation comparisons among populations showed inconsistencies considering their distribution throughout the basins. Genetic and geographic distances were significantly correlated at global and within the basins considered ($p < .02$), but low correlation indices were obtained ($r < .37$). These results are discussed in relation to the fragmented landscape, considering both natural and non-natural (humans) dispersal agents that may be moving *Prosopis* in the Atacama Desert.

KEYWORDS

Algarrobo, *Chilenses*, genetic diversity, microsatellites, sociocultural factors, structure

This is an open access article under the terms of the Creative Commons Attribution License, which permits use, distribution and reproduction in any medium, provided the original work is properly cited.

© 2021 The Authors. *Ecology and Evolution* published by John Wiley & Sons Ltd.

1 | INTRODUCTION

The Atacama Desert in northern Chile extends for more than 1,000 km along the western coast of South America and is one of the most arid deserts on Earth. The extreme aridity is primarily caused by the cold water of the Humboldt Current, running parallel to the Chilean and southern Peruvian coasts and preventing precipitation in the coastal areas. Moreover, aridity is intensified by the Andes cord that produces a rain-shadow effect, blocking moisture from the Amazon basin (Houston & Hartley, 2003). However, during summer some of this moisture passes over the Andes, intensifying discharges of water flows through deeply incised gorges and shallow riparian and underground water systems (Jayne et al., 2016; Vuille et al., 2012).

In the Atacama Desert, within 19–24°S, three hydrological basins can be recognized: Pampa del Tamarugal, Loa River, and Salar de Atacama (Mortimer, 1980; Nester et al., 2007). In Pampa del Tamarugal or northern basin, the vegetation corresponds to the “Desierto del Tamarugal” (Gajardo, 1994) and is distributed in areas where the water table is relatively shallow or receives riparian flows originated in the Andes by summer precipitations (Barros, 2010). This basin has evidence of several human settlements since the Late Pleistocene, and it is connected by a small ravine with the lower course of the Loa River, nearby its mouth in the Pacific Coast (Nester et al., 2007; Pfeiffer et al., 2018). The Loa River or the central basin is the only exoreic stream traversing the desert from the Andes to the Pacific Ocean. It is placed between the Pampa del Tamarugal to the north and the Salar de Atacama to the southeast. This basin was used as a natural and cultural corridor since pre-Columbian times (Marquet et al., 1998; Núñez, 1971), passing beyond different vegetation belts, although riparian plants predominate along the watercourse (Gajardo, 1994; Villagrán & Castro, 2004). Finally, the Salar de Atacama is an endorheic basin within the Prepuna foothills (Arriagada et al., 2006; Marazuela et al., 2019). Different quebradas flow into this system giving rise to several oases with riparian vegetation (Gajardo, 1994; Villagrán & Castro, 2004). This area was also key in the history of pre-European societies (Núñez & Santoro, 1988).

The genus *Prosopis* (Leguminosae) includes 44 species distributed in Southwest Asia, Africa, and predominantly America (Burkart, 1976). *Prosopis* species are important plants in arid and semiarid regions, and many species from one particular Section, *Algarobia* (*algarrobo*), are considered multipurpose trees. From an economic perspective, humans use it as food as the raw pods can be eaten directly or processed within a variety of culinary preparations (Capparelli, 2007). Their pods and leaves provide forage for animals, and their flowers are melliferous. The wood is useful for diverse manufactures, having higher caloric value than other sympatric species (Burkart, 1976; Cony, 1996; Roig, 1993; Villagrán & Castro, 2004). From an ecological view, they can grow on sandy soils and contribute to stabilize dunes, combat desertification, and reforest degraded areas (Bessega et al., 2019; Burkart, 1976; Cony, 1996; Roig, 1993).

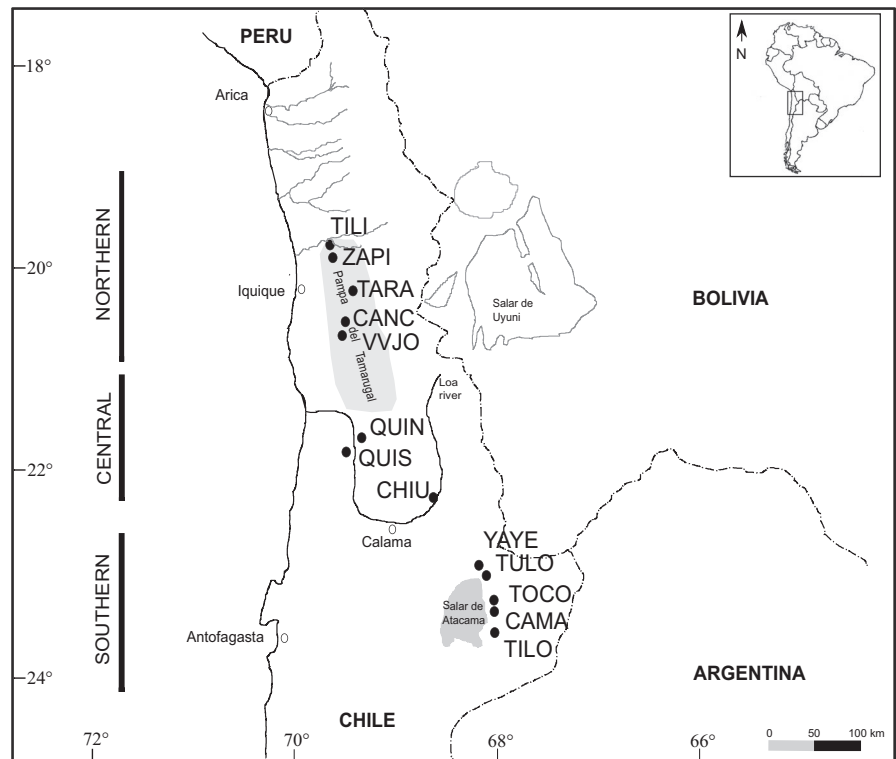
In Chile, according to Burkart (1976) six species from Section *Strombocarpa* and *Algarobia* can be found (*P. strombulifera*, *P. burkartii*, *P. tamarugo*, *P. chilensis*, *P. flexuosa*, and *P. alba*), but Muñoz (1981) also cited *P. nigra* for the north of Chile. While the Pampa del Tamarugal forest is dominated by three species from Section *Strombocarpa* (*P. burkartii*, *P. strombulifera*, and the endemic *P. tamarugo*), individuals belonging to different species from Section *Algarobia* (*P. alba*, *P. flexuosa*, and *P. chilensis*) can be found up to 3,000 masl and are distributed from the Pampa del Tamarugal to the Salar de Atacama basin (Figure 1; Barros, 2010; Carevic et al., 2012). Natural *algarrobo* populations are restricted to oases unevenly distributed and isolated from each other by large stretches of barren landscape. This area is categorized as an absolute desert since plant life is practically absent in much of its extension (Gajardo, 1994; Gayo, Latorre, Jordan, et al., 2012; Gayo et al., 2012; Latorre et al., 2002, 2005).

The effects produced by landscape isolation may be comparable with those occurring on forest populations due to urbanization, overexploitation, and land conversion into crop plantations, in terms of habitat fragmentation, mating system changes, and gene flow restriction (Cascante et al., 2002; Jump & Penuelas, 2006). When populations become genetically isolated, they are at risk of losing the genetic diversity that is critical to their long-term survival (Sork & Smouse, 2006). As a consequence of the isolation, an immediate loss of alleles due to the reduction in the population is expected, with the consequence of inbreeding, population divergence increase, and genetic diversity reduction within population patches (Lowe et al., 2005). However, the longevity of the trees and effective seed and pollen dispersal (when possible) can enhance their resistance to the negative effect of the forest fragmentation (Jump & Penuelas, 2006).

In trees, gene flow is mediated by mobile structures with reproductive function as seeds, pollen, and vegetative propagules, while the adult stage is sessile. Limitation in the dispersal distance of seeds and/or pollen over time will produce a particular genetic structure consisting of decreasing relatedness of individuals with increasing geographical distance (Loiselle et al., 1995). The natural *Prosopis* populations in Atacama Desert constitute an interesting study model as the degree of connectivity between populations depends on their dispersal capacity and the barriers imposed by the landscape. *Prosopis* populations are expected to be structured because pollen and seed dispersals are limited (Bessega, Ferreyra, Julio, et al., 2000; Bessega et al., 2011, 2017). The endozoic seed dispersal determines that seeds from the same mother plant are eaten by small- and medium-sized herbivores (Reynolds, 1954) and transported away jointly. They are then deposited in dung, and full- or half-sib seeds tend to germinate together in a narrow area. Besides, the pollination is entomophilous (Genisse et al., 1990) favoring crosses among near neighbor plants.

The main objective of this study was to assess the genetic diversity and the degree of differentiation among groups of *Prosopis* individuals of different species from Section *Algarobia* and putative hybrids (hereafter populations) co-occurring in the isolated oases from the Atacama Desert and determine whether genetic patterns are related to dispersal barriers. For this, we characterized by

FIGURE 1 Ecosystems and areas of sampling sites across the Atacama Desert (Chile). TILI: Tiliviche, ZAPI: Zapiga, TARA: Tarapacá, CANC: Canchones, VVJO: Valle Viejo, QUIN: Quillagua Norte, QUIS: Quillagua Sur, CHIU: Chiu-Chiu, YAYE: Yaye, TULO: Tulo, TOCO: Toconao, CAMA: Camar, TILO: Tilomonte



microsatellites the variability, genetic differentiation, and genetic structure among 13 populations considering three distant basins. Through these analyses, we addressed the following questions: (a) Are there differences in the genetic diversity parameters among populations? (b) How is the genetic variation distributed considering the different hierarchical levels (basins, populations and individuals)? (c) What is the level of differentiation and gene flow among populations? (d) Is there a genetic pattern compatible with isolation by distance (IBD)? (e) Is there genetic structure evidence? As the Atacama Desert provides habitat fragmentation that could affect the natural gene flow, given by the large stretches of hyperarid landscape, we discuss the genetic results considering the dispersal barriers that separate the populations.

Given that *Prosopis* populations are restricted to isolated oases, the current hypothesis is that the gene flow restrictions among different populations would determine significant genetic differentiation among populations. Additionally, the dispersal limitation described for *Prosopis* species (Bessegga, Ferreyra, Julio, et al., 2000; Bessegga et al., 2011, 2017) and the barriers imposed by the landscape should be reflected in population genetic structure.

2 | MATERIALS AND METHODS

2.1 | Study sites and sampling

The sampled range in our study extends from 19 to 24°S (Figure 1), within the core of the Atacama Desert and encompasses three hydrological systems: (a) the northern basin or inland basin of Pampa

del Tamarugal (19.5–20.76°S), close to the Pacific coast; (b) the central basin or the Loa River, Calama area (21.6–22.3°S); and (c) the southern basin or Salar de Atacama (22.9–23.8°S), at the slope of the Andes and far away from the Pacific Coast. Within the Pampa del Tamarugal basin, there are 325 km² of *P. alba* populations planted by the Chilean State during the middle of the 20th century that we did not sample as natural populations were our study goal (Barros, 2010).

We sampled thirteen natural populations of *Prosopis* species from Section *Algarobia* (Table 1; Figure 1). We collected fresh young leaves and pods for species identification. Each sampled tree was deposited at the INTA, Hurlingham BAB herbarium, Buenos Aires, Argentina. Species identifications were done considering leaves, spines, fruits, and tree form following Burkart (1976), Burkart and Simpson (1977), and Palacios and Brizuela (2005) proposals. For each sample, we had considered habit form, leaf division, leaflets (length, width, distance between leaflets), spines (types and length), and fruits (shape, length, and epicarp color). Likewise, the identification was corroborated with the type specimen of the taxa available at <https://plants.jstor.org/>. As the identification of hybrids was based on morphological traits, not confirmed by molecular data, the term “putative hybrid” is used throughout the manuscript. Following Vilardi et al. (1988) method, which recommends sampling trees separated more than 30–50 m from each other to avoid collecting genetically related material, we did not gather all the trees present in each oasis, but the maximum possible. Six to seventeen adult trees (diameter at breast height [DBH] > 80 cm) were sampled in each location because populations were small, giving a total of 126 adult individuals. Geographical coordinates were recorded for each sampled tree using GPS Garmin Etrex 20, datum WGS84.

TABLE 1 Locality, acronyms, geographic coordinates (latitude, longitude, altitude), number of samples (N), basin, taxonomic classification of the sampled material, and herbarium voucher numbers (Voucher No) of the thirteen *Prosopis* populations (Pop) sampled in the Atacama Desert (Chile)

| Pop | Locality | Acronyms | Latitude (degrees) | Longitude (degrees) | Altitude (masl) | N | Basin | Sampled material (n) | Voucher no |
|-----|-----------------|----------|--------------------|---------------------|-----------------|----|-------|--|--|
| 1 | Tiliviche | TILI | -19.55308 | -69.95375 | 1,011 | 14 | N | <i>P. a</i> (7), <i>P. fle</i> (7) | 13409–13421 |
| 2 | Zapiga | ZAPI | -19.63436 | -69.95222 | 1,112 | 17 | N | <i>P. a</i> (2), <i>P. chi</i> (1), <i>P. fle</i> (10), <i>P. nig</i> (3), <i>P. a</i> x <i>P. fle</i> (1) | 13223–13239 |
| 3 | Tarapacá | TARA | -19.90145 | -69.48397 | 1,465 | 8 | N | <i>P. chi</i> (5), <i>P. fle</i> (3) | 13246/13249, 13253, 13255/13260, 13262, 13263–13268–13272, 13275/13380 |
| 4 | Canchones | CANC | -20.43496 | -69.53340 | 980 | 11 | N | <i>P. a</i> (5), <i>P. chi</i> (6) | 13260, 13262–13263, 13271–13272, 13275–13280 |
| 5 | Victoria Viejo | VVJO | -20.76900 | -69.56855 | 962 | 6 | N | <i>P. a</i> (3), <i>P. chi</i> (3) | 13288–13302 |
| 6 | Quillagua Norte | QUIN | -21.61749 | -69.55209 | 776 | 6 | C | <i>P. fle</i> (1), <i>P. chi</i> (2), <i>P. nig</i> (2), <i>P. chi</i> x <i>P. fle</i> (1) | 13304–13308 |
| 7 | Quillagua Sur | QUIS | -21.65166 | -69.53409 | 804 | 6 | C | <i>P. fle</i> (5), <i>P. fle</i> x <i>P. chi</i> (1) | 13313–13318 |
| 8 | Chiu-Chiu | CHIU | -22.31751 | -68.65020 | 2,545 | 10 | C | <i>P. a</i> (4), <i>P. chi</i> (6) | 13325, 13328, 13331/32, 13335, 1338–13342 |
| 9 | Yaye | YAYE | -22.91853 | -68.20203 | 2,415 | 8 | S | <i>P. a</i> (4), <i>P. fle</i> (3), <i>P. a</i> x <i>P. chi</i> (1) | 13347/13351, 1353, 1356, 13359/60 |
| 10 | Tulor | TULO | -22.96842 | -68.21942 | 2,394 | 6 | S | <i>P. fle</i> (5), <i>P. fle</i> x <i>P. chi</i> (1) | 13633–13638 |
| 11 | Toconao | TOCO | -23.18508 | -68.00165 | 2,511 | 8 | S | <i>P. a</i> (6), <i>P. chi</i> (2) | 13405, 13607, 13618–13623 |
| 12 | Camar | CAMA | -23.40098 | -67.95119 | 2,726 | 10 | S | <i>P. chi</i> (4), <i>P. fle</i> (5), <i>P. chi</i> x <i>P. fle</i> (1) | 13393–12402 |
| 13 | Tilomonte | TILO | -23.78556 | -68.10135 | 2,377 | 16 | S | <i>P. a</i> (1), <i>P. chi</i> (8), <i>P. fle</i> (6), <i>P. chi</i> x <i>P. fle</i> (1) | 13367–13382 |

Abbreviations: N, northern; C, central; S, southern; masl, meters above sea level; n, sample size; *P. a*, *P. alba*; *P. fle*, *P. flexuosa*; *P. chi*, *P. chilensis*; *P. nig*, *P. nigra*.

2.2 | Microsatellite analysis

Total DNA was isolated from leaf material using DNA easy Plant Mini kit (Qiagen Inc.). We used a total of eight microsatellites; four developed by Mottura et al. (2005) for *P. chilensis* and *P. flexuosa*: Mo08, Mo09, Mo05, and Mo13, and four developed by Bessega et al. (2013) for *P. alba* and *P. chilensis*: GL9, GL12, GL8, and GL21. The SSRs were amplified using forward primers labeled with a fluorescent dye (6-FAM and HEX, Invitrogen). The PCR amplifications were carried out in a 50 μ l reaction volume containing 10–30 ng DNA, 0.6 μ M each primer, 0.2 mM dNTPs, 0.3 U Taq DNA polymerase (Invitrogen), and 1.5 mM MgCl₂. A T100 Thermal Cycler (Life Science Research, Bio-Rad) was used for amplifications with a cycling profile of initial denaturation at 94°C for 5 min followed by 35 cycles at 94° for 45 s denaturation, primer-specific annealing temperature (56°–59°) for 45 s and at 72°C for 45 s extension, and a final extension step at 72° for 10 min. PCR products were electrophoresed using MacroGen service (www.dna.macrogen.com) and sized using GENEMARKER ver 1.91 (SoftGenetics, 2019).

2.3 | Data analysis

2.3.1 | Genetic diversity and inbreeding coefficient F_{IS}

Linkage disequilibrium was tested by the index of association (I_A) and a slightly modified statistic which is independent of the number of loci (r_d) (Agapow & Burt, 2001). I_A and r_d coefficients, with 9,999 randomizations, were estimated with the package *poppr* (Kamvar et al., 2014, 2015) of R program ver. 4.0.1 (R Development Core Team, 2020).

Genetic diversity was quantified in each population through the mean number of observed alleles per locus (A), mean percentage of total alleles observed per locus per population (%TA), allelic richness (A_r), and observed heterozygosity (H_O) and expected heterozygosity (H_E) under the Hardy–Weinberg equilibrium. Genetic variability estimate mean was compared among populations by the nonparametric ANOVA test (Kruskal–Wallis test). Homozygote excess/deficiency was quantified by the fixation index (F_{IS}) which was considered significant when the zero is not contained in its 95% confidence interval (based on 2,000 bootstrap resampling). A , %TA, and H_O were estimated using the package *diveRsity* (Keenan et al., 2013) of R software; A_r was estimated using ASDE (Szpiech et al., 2008) that allows the correction for samples bias; and H_E was estimated using SPAGeDi (Hardy & Vekemans, 2002) that performs the Nei (1978) gene correction for small number of individuals.

2.3.2 | Genetic differentiation

From the microsatellite's marker data, three differentiation coefficients were estimated. F_{ST} (Wright, 1951) was estimated with the

package *hierfstat* (Goudet, 2005) of the software R, and its significance was determined by the G test (*test.g* function). In order to avoid bias induced by the presence of null alleles, F_{ST} excluding null alleles (F_{ST-ENA}) was also estimated using the software FreeNA (Chapuis & Estoup, 2007). D_{JOST} (Jost, 2008) and its significance were calculated using 1,000 permutations as implemented in GenAlEx 6.5 (Peakall & Smouse, 2012). F_{ST} , F_{ST-ENA} , and D_{JOST} were also estimated within each sampled basins of the Atacama Desert (northern, central, and southern) and also as pairwise population genetic differentiation indices. Heat map of F_{ST} pairwise comparisons between populations was conducted using the *levelplot* function of the *lattice* package (Sarkar, 2008) of the software R. Gene flow (Nm) was calculated assuming drift–migration equilibrium using the formula: $Nm = (1 - F_{ST})/4F_{ST}$ (Slatkin & Barton, 1989).

Genetic differentiation estimate mean within and among basins was compared by the nonparametric ANOVA test (Kruskal–Wallis test), and pairwise comparisons were performed by Wilcoxon's pairwise tests using, respectively, the functions *kruskal.test* and *pairwise.wilcox.test* of R software.

To estimate the distribution of genetic diversity, the analysis of molecular variance (AMOVA) was assessed using Φ statistics by means of the package *poppr* of R. The molecular differentiation was partitioned into among the sampled basins, among populations within these basins, and among individuals within population components. The significance of Φ statistics was obtained with the function *randtest.amova* of the *ade4* package (Bougeard & Dray, 2018; Dray & Dufour, 2007; Dray et al., 2007) of R software with 2,000 permutations.

The differentiation among populations was also evaluated by discriminant analysis of principal components (DAPC; Jombart et al., 2010), using the function *dapc* of the *adegenet* package (Jombart, 2008; Jombart & Ahmed, 2011) of software R. This analysis was conducted with *prior* information on individual populations.

2.3.3 | Genetic structure among populations

A Bayesian model-based cluster analysis was performed using the program STRUCTURE version 2.3.4 (Pritchard et al., 2009). We explored which value of K maximized the likelihood of the data. The burn-in period and the number of Markov chain Monte Carlo (MCMC) repetitions were 25,000 and 50,000, respectively, and K values were averaged across ten iterations. Considering the range of population distribution, both admixture and no-admixture models were run considering correlated allele frequencies, no sampling locations as prior information and K from 2 to 14. The optimum K value was determined with STRUCTURE HARVESTER (Earl & vonHoldt, 2012) inputting 10 runs per K by comparing the average log-likelihood of data for each value of K (Pritchard et al., 2000) and by the ΔK statistic (Evanno et al., 2005), based on the second-order rate of change in the log-likelihood of data between successive K values.

2.3.4 | Correlation between genetic and geographic distance

In order to test isolation by distance (IBD), two pairwise population distance matrices (genetic distances and geographic distances) were constructed and compared through the *Mantel* tests with 9,999 permutations using the software GenAlEx 6.5 (Peakall & Smouse, 2012). A pairwise, individual-by-individual ($N \times N$) genetic distance matrix based on *multilocus* genotypes was calculated (GD). For a single-locus analysis, with i -th, j -th, k -th, and l -th different alleles, a set of squared distances are defined as $d_2(ii, ii) = 0$, $d_2(ij, ij) = 0$, $d_2(ii, ij) = 1$, $d_2(ij, ik) = 1$, $d_2(ij, kl) = 2$, $d_2(ii, jk) = 3$, and $d_2(ii, jj) = 4$ (Peakall et al., 1995; Smouse & Peakall, 1999). Geographic distances were calculated from the coordinates of sampled localities.

3 | RESULTS

3.1 | Genetic diversity and inbreeding coefficient F_{IS}

Individuals sampled were determined as *P. alba*, *P. chilensis*, *P. flexuosa*, and *P. nigra* and just one putative hybrid was identified in ZAPI, QUIN, QUIS, YAYE, TULO, CAMA, and TILO (Table 1).

The analysis of linkage disequilibrium in the whole sample yielded significant results ($p = .001$), which are attributable to four populations (TILI, TARA, CANC, and VVJO). In the other nine populations, the association index was nonsignificant (Table 2); however, after applying Bonferroni's correction for multiple tests, linkage disequilibrium was significant in only one population suggesting that the eight *loci* markers were genetically independent.

TABLE 2 Linkage disequilibrium evaluation by index of association I_A and r_d in the thirteen oases of *Prosopis* analyzed (Pop)

| Pop | I_A | r_d | P |
|-------|--------|--------|------|
| TILI | 0.361 | 0.053 | .037 |
| ZAPI | 0.118 | 0.017 | .178 |
| TARA | 0.540 | 0.078 | .015 |
| CANC | 0.540 | 0.078 | .013 |
| VVJO | 1.515 | 0.224 | .001 |
| QUIN | -0.355 | -0.054 | .851 |
| QUIS | -0.354 | -0.056 | .875 |
| CHIU | 0.319 | 0.046 | .080 |
| YAYE | -0.157 | -0.023 | .640 |
| TULO | 0.667 | 0.103 | .051 |
| TOCO | -0.603 | -0.089 | .907 |
| CAMA | 0.037 | 0.055 | .404 |
| TILO | -0.177 | -0.026 | .869 |
| Total | 0.281 | 0.040 | .001 |

Note: P = significance of r_d estimated by 9,999 permutations.
Pop = population acronyms from Table 1.

The eight SSR loci analyzed in the populations were highly variable showing from two to eight alleles per locus. Percentages of total alleles observed per population (%TA), allelic richness (A_r), and heterozygosity (H_O , H_E) were relatively high in all the studied populations (Table 3). Several indices indicated that TULO was the population with the lowest genetic variation and CHIU the most variable. The percentage of total alleles observed per population and allelic richness ranged from 47.8% and 2.7, respectively, in TULO to 64.5% and 4.1, respectively, in CHIU with a mean value of 56.3% for %TA and 3.5 for A_r . The highest value of H_E was detected in CHIU ($H_E = 0.73$) and the lowest in TULO ($H_E = 0.56$). However, KW-ANOVA indicates that the differences among populations are not significant for all the estimates obtained [%TA ($X^2 = 8.43$ $p = .75$), A_r ($X^2 = 17.23$ $p = .14$), H_O ($X^2 = 8.71$ $p = .73$), and H_E ($X^2 = 7.37$ $p = .83$)].

In five populations, F_{IS} was significant (according to their $CI_{95\%}$; Table 3), and the ratio negative/positive was 2/3, showing no general trend to heterozygote excess or deficiency. Moreover, F_{IS} was negative in seven and positive in six populations. This result fits the expectation for F_{IS} estimates in populations under the Hardy-Weinberg equilibrium, because when the actual F_{IS} equals 0, over- and underestimates of F_{IS} (due to sampling error) occur with the same frequency.

3.2 | Genetic differentiation

Analyses based on F_{ST} , F_{ST-ENA} , and D_{JOST} indices yielded similar results, indicating that the overall level of genetic differentiation among the thirteen populations was highly significant ($F_{ST} = 0.128$, $p \leq .001$; $D_{JOST} = 0.238$ $p \leq .001$; Table 4). Considering all populations, 1.69 migrants per generation were estimated from F_{ST} (Table 4). For northern and southern basin populations, the genetic differentiation indices dropped up to near 30% ($F_{ST} = 0.087$ and 0.092, $D_{JOST} = 0.151$ and 0.182, respectively) but remain highly significant. Based on F_{ST} , the gene flow becomes 2.62 and 2.47 migrants per generation in northern and southern basins, respectively. In the central basin, differentiation was significant according to F_{ST} index ($F_{ST} = 0.035$) and gene flow was much higher in comparison with northern and southern basins ($Nm = 6.95$); however, based on D_{JOST} the differentiation among populations within this basin was not significant ($D_{JOST} = 0.066$). In reference to the global F_{ST-ENA} estimation ($F_{ST-ENA} = 0.129$), similar decreases in the genetic differentiation indices were obtained within the three basins ($F_{ST-ENA} = 0.088$, 0.042, and 0.087 for the northern, central, and southern basins, respectively; Table 4).

The genetic differentiation between populations from the same or different geographical basins showed the same tendency by F_{ST} , F_{ST-ENA} , and D_{JOST} (Tables S1-S3), pairwise genetic differentiation expressed by F_{ST} was small to moderate ($F_{ST} < 0.17$), but a trend toward higher differentiation between populations from different basins was observed (Tables S1-S3; Figure 2). Genetic differentiation between populations within the northern group was low ($F_{ST} < 0.075$) with the exception of ZAPI-TILI and ZAPI-TARA comparison that

TABLE 3 Genetic diversity indices in the thirteen *Prosopis* population based on eight SSR loci

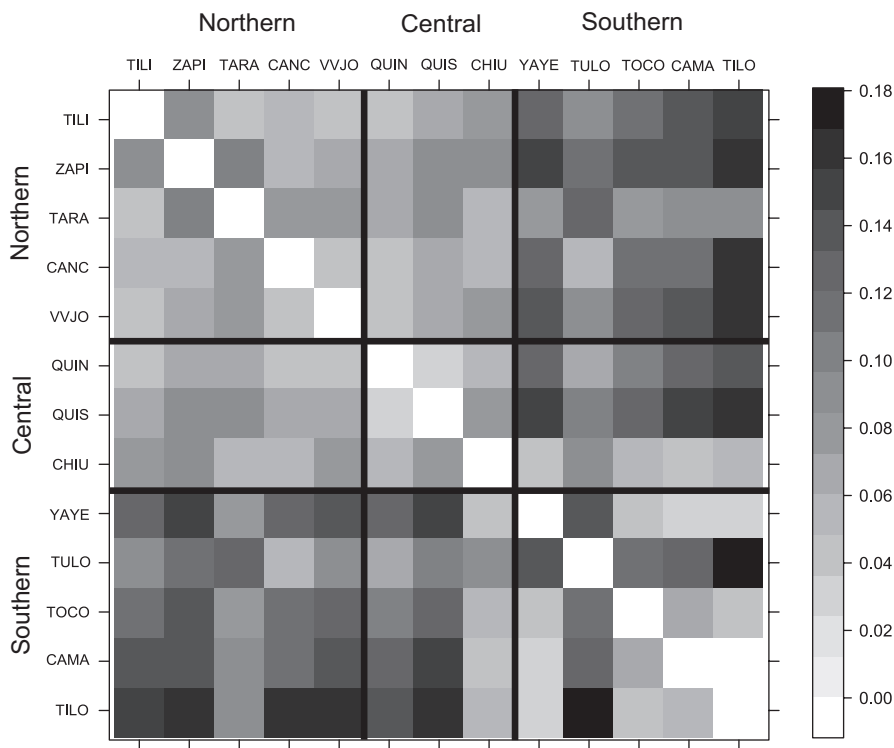
| N | A (SD) | %TA (SD) | A _r (SD) | H _O (SD) | H _E (SD) | F _{IS} | CI _{95%} |
|------|----------------------|-----------------------|----------------------|----------------------|----------------------|-----------------------|-------------------|
| TILI | 14.000 (0.000) | 55.050 (20.327) | 3.838 (1.315) | 0.640 (0.224) | 0.620 (0.205) | -0.075* | -0.178 |
| ZAPI | 17.000 (0.000) | 60.860 (18.195) | 4.113 (1.316) | 0.540 (0.172) | 0.621 (0.163) | 0.109* | 0.007 |
| TARA | 8.000 (0.000) | 57.130 (18.561) | 3.497 (0.869) | 0.580 (0.251) | 0.676 (0.120) | 0.088 | -0.106 |
| CANC | 11.000 (0.000) | 62.350 (20.066) | 3.874 (0.988) | 0.550 (0.164) | 0.656 (0.138) | 0.129 | -0.049 |
| VVJO | 6.000 (0.000) | 50.070 (22.378) | 3.043 (0.772) | 0.690 (0.208) | 0.686 (0.127) | -0.094 | -0.357 |
| QUIN | 6.000 (0.000) | 57.770 (23.025) | 3.292 (0.770) | 0.750 (0.177) | 0.701 (0.154) | -0.168* | -0.366 |
| QUIS | 6.000 (0.000) | 52.680 (22.471) | 2.999 (0.762) | 0.580 (0.235) | 0.648 (0.149) | 0.018 | -0.203 |
| CHIU | 9.880 (0.354) | 64.510 (18.593) | 4.128 (1.120) | 0.570 (0.209) | 0.727 (0.113) | 0.177* | 0.006 |
| YAYE | 7.880 (0.354) | 52.050 (22.119) | 3.153 (0.884) | 0.590 (0.153) | 0.624 (0.151) | -0.008 | -0.173 |
| TULO | 6.000 (0.000) | 47.780 (26.658) | 2.745 (0.975) | 0.670 (0.356) | 0.563 (0.177) | -0.227* | -0.539 |
| TOCO | 8.000 (0.000) | 55.920 (21.537) | 3.288 (0.814) | 0.620 (0.164) | 0.625 (0.167) | -0.067 | -0.182 |
| CAMA | 10.000 (0.000) | 57.240 (22.134) | 3.537 (1.147) | 0.620 (0.243) | 0.626 (0.156) | -0.050 | -0.213 |
| TILO | 16.000 (0.000) | 58.920 (24.919) | 3.716 (1.434) | 0.520 (0.286) | 0.593 (0.204) | 0.040 | -0.044 |
| Mean | 9.674 (6.047) | 56.333 (4.638) | 3.479 (0.232) | 0.609 (0.063) | 0.643 (0.028) | -0.010 (0.119) | |

Note: N, mean number of individuals analyzed per locus; A, observed alleles per locus; %TA, mean percentage of total alleles observed per population; A_r, allelic richness corrected for sample bias (Szpiech et al., 2008); H_O, observed heterozygosity; H_E, expected heterozygosity corrected for sample size (Nei, 1978); F_{IS}, inbreeding coefficient; F_{IS} was considered significant (*) when zero is not included in 95% confidence intervals (CI_{95%}). SD in parenthesis.

TABLE 4 Genetic differentiation estimated by F_{ST} , F_{ST-ENA} , and D_{JOST} at different geographic levels and gene flow estimation (Nm) based on F_{ST} index

| Level | Populations | F_{ST} (p) | Nm | F_{ST-ENA} ($CI_{95\%}$) | D_{JOST} (p) |
|-------------------|--|-----------------------|------|------------------------------|--------------------|
| Total (13 pops) | TILI, ZAPI, TARA, CANC, VVJO, QUIN, QUIS, CHIU, YAYE, TILO, CAMA, TOCO, TULO | 0.128 ($\leq .001$) | 1.69 | 0.129 (0.082–0.191) | 0.238 (.001) |
| Northern (5 pops) | TILI, ZAPI, TARA, CANC, VVJO | 0.087 (.001) | 2.62 | 0.088 (0.043–0.156) | 0.151 (.001) |
| Central (3 pops) | QUIN, QUIS, CHIU | 0.035 (.020) | 6.95 | 0.042 (0–0.084) | 0.066 (.087) |
| Southern (5 pops) | YAYE, TULO, TOCO, CAMA, TILO | 0.092 (.001) | 2.47 | 0.087 (0.059–0.111) | 0.182 (.001) |

Note: Population abbreviations are as in Table 1, $CI_{95\%}$ = 95% confidence intervals.

**FIGURE 2** Heat map of F_{ST} pairwise comparisons between populations. White cells are low F_{ST} values; darker cells are increasingly higher F_{ST} . TILI: Tiliviche, ZAPI: Zapiga, TARA: Tarapacá, CANC: Canchones, VVJO: Valle Viejo, QUIN: Quillagua Norte, QUIS: Quillagua Sur, CHIU: Chiu-Chiu, YAYE: Yaye, TULO: Tulo, TOCO: Toconao, CAMA: Camar, TILO: Tilomonte

| Source of variation | df | SS | MS | Est. Var. | % | Φ | p |
|--|------|--------|-------|-----------|-------|--------|--------|
| Between basins | 2 | 49.43 | 24.71 | 0.22 | 7.40 | 0.207 | .00049 |
| Between populations within basins | 10 | 69.59 | 6.96 | 0.22 | 7.47 | 0.068 | .00049 |
| Between individuals within populations | 113 | 307.52 | 2.72 | 0.17 | 5.81 | 0.081 | .00049 |
| Within individuals | 126 | 299.09 | 2.37 | 2.37 | 79.32 | 0.074 | .00749 |
| Total | 251 | 725.63 | 2.89 | 2.99 | 100 | | |

Note: df : degrees of freedom, SS: sum of squares, MS: mean squares, Est Var.: estimated variability, %: proportion of genetic variability, Φ : fixation index, P : significance level.

was comparatively higher ($F_{ST} = 0.096$ and 0.108 , respectively). In the central group, F_{ST} was also very low ($F_{ST} < 0.078$), while the F_{ST} between populations of the southern basin was low among almost all the population pairs studied (< 0.066). The exception was TULO,

which was highly differentiated from all the remaining populations of the southern basin ($0.120 > F_{ST} < 0.169$).

The mean pairwise differentiation estimates among populations from northern, central, and southern basins showed significant

variation of F_{ST} ($X^2 = 26.59$, $p = 6.83 \times 10^{-5}$), F_{ST-ENA} ($X^2 = 27.81$, $p = 3.97 \times 10^{-5}$), and D_{JOST} ($X^2 = 27.40$, $p = 4.75 \times 10^{-5}$). For the three indices, the Wilcoxon pairwise comparisons test was significant among differentiation indices from northern populations with the central and the southern ones ($p < 5 \times 10^{-5}$ and $p < .0093$, respectively). The F_{ST} between populations from northern and central basins were lower in comparison with populations from northern and southern basins. Considering the central and northern basins, the most differentiated population pairs were TARA-QUIS and ZAPI-QUIS with $F_{ST} = 0.093$ and 0.092 , respectively. The largest F_{ST} index obtained from comparing populations from northern and southern basins correspond to the pair ZAPI-TILO ($F_{ST} = 0.168$).

The AMOVA (Table 5) indicated that the among-basin differentiation ($\phi_{RT} = 0.207$), the variation among populations within basins ($\phi_{PR} = 0.068$) and among individuals within populations ($\phi_{IP} = 0.081$) were all highly significant ($p < .0005$). The distribution of molecular variance at different hierarchical levels indicated that most of the variation occurs within individuals (79.32%), and consequently, the

variance among individuals resulted in 20.68%. Within this level, the between-basin component (7.40%) was almost equal to the between-population within-basin component (7.47%) followed by the between-individual within population component (5.81%) representing 35.78%, 36.12%, and 28.10%, respectively.

In the DAPC analysis, three axes were retained and explained 94.2% of total variation (57.95%, 23.85%, and 12.40%, respectively; Figure 3). Considering the three scatterplots retrieved (Figure 3a-c), the populations are not very differentiated with the exception of ZAPI individuals that can be recognized as a separate group according to PC2. The PC1 versus PC2 scatterplot (Figure 3a) shows the ZAPI individuals separated from two groups partially differentiated integrated by the remaining populations. These overlapping groups can be partially associated with the sampling basin; one is integrated by CAMA, YAYE, TOCO, CHIU, and TILO, and a second group contains CANC, VVJO, TILI, QUIS, QUIN, QUIS, and TULO individuals. The TARA individuals are situated in an intermediate position according to PC1 and partially overlapped with both groups

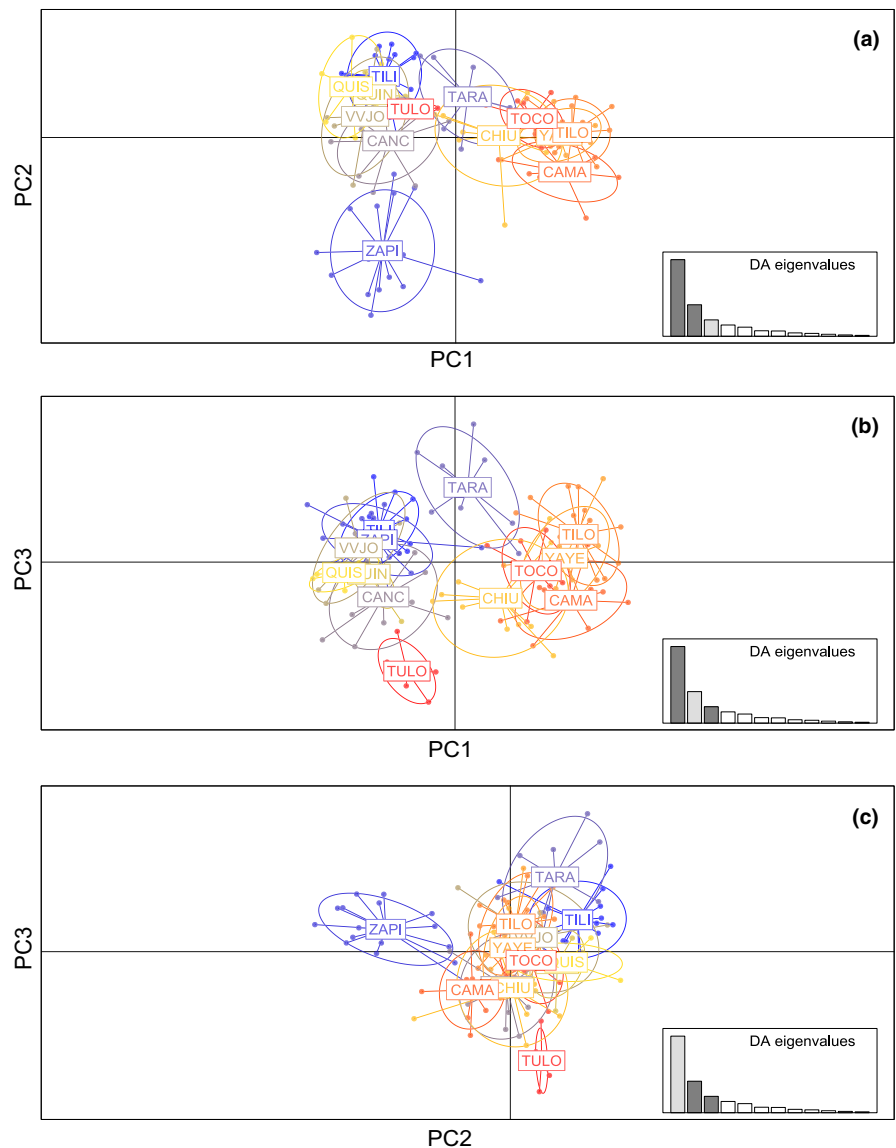


FIGURE 3 Scatterplot of individuals on the three principal components obtained by discriminant analysis of principal components (DAPC). (a) PC1 versus PC2; (b) PC1 versus PC3; and (c) PC2 versus PC3. The graph represents the individuals as dots and the groups as inertia ellipses. TILI: Tiliviche, ZAPI: Zapiga, TARA: Tarapacá, CANC: Canchones, VVJO: Valle Viejo, QUIN: Quillagua Norte, QUIS: Quillagua Sur, CHIU: Chiu-Chiu, YAYE: Yaye, TULO: Tulo, TOCO: Toconao, CAMA: Camar, TILO: Tilomonte

(Figure 3a,b). In PC1 versus PC3 scatterplot (Figure 3b), TULO and TARA individuals are relatively separated by PC3. The PC2 versus PC3 scatterplot (Figure 3c) reflects that the TULO individuals can also be considered partially differentiated.

3.3 | Genetic structure among populations

The STRUCTURE analysis revealed an optimal number of sub-populations at $K = 2$ by the ΔK criteria and $K = 4$ by the mean log-likelihood of data for each value of K (Pritchard et al., 2000) in both no-admixture and admixture models performed (Figure S1a,b, respectively). Consequently, we analyzed the structure distribution at $K = 2$ and 4 for both models (Figures 4 and S2, respectively).

According to Figure 4, with $K = 2$, the clusters retrieved are not related to geographic location. Individuals from TILI, ZAPI, CANC, VVJO, QUIN, QUIS, and TULO populations belong to the red cluster, and those from YAYE, TILO, CAMA, and TOCO to the green cluster, suggesting that these two population groups are genetically

differentiated. TARA and CHIU populations would have individuals belonging to both genetic clusters.

For $K = 4$, individuals from TARA, CANC, VVJO, QUIN, QUIS, and CHIU exhibit admixture and are represented by clusters red, green, blue, and yellow. All the individuals from YAYE, TILO, CAMA, and TOCO are represented by the same genetic cluster (yellow). Individuals from TULO are represented by a genetic cluster (blue) that is absent in the southern basin and is represented only in the central population QUIN and QUIS. The individuals from TILI are represented by the red cluster and the individuals from ZAPI by the green one. These genetic groups are absent in the southern basin as they are only represented up to CHIU latitude.

3.4 | Correlation between genetic and geographic distance

We found significant correlation between genetic and geographical distances both when all sites were included ($r = .37$, $p = .000$) and

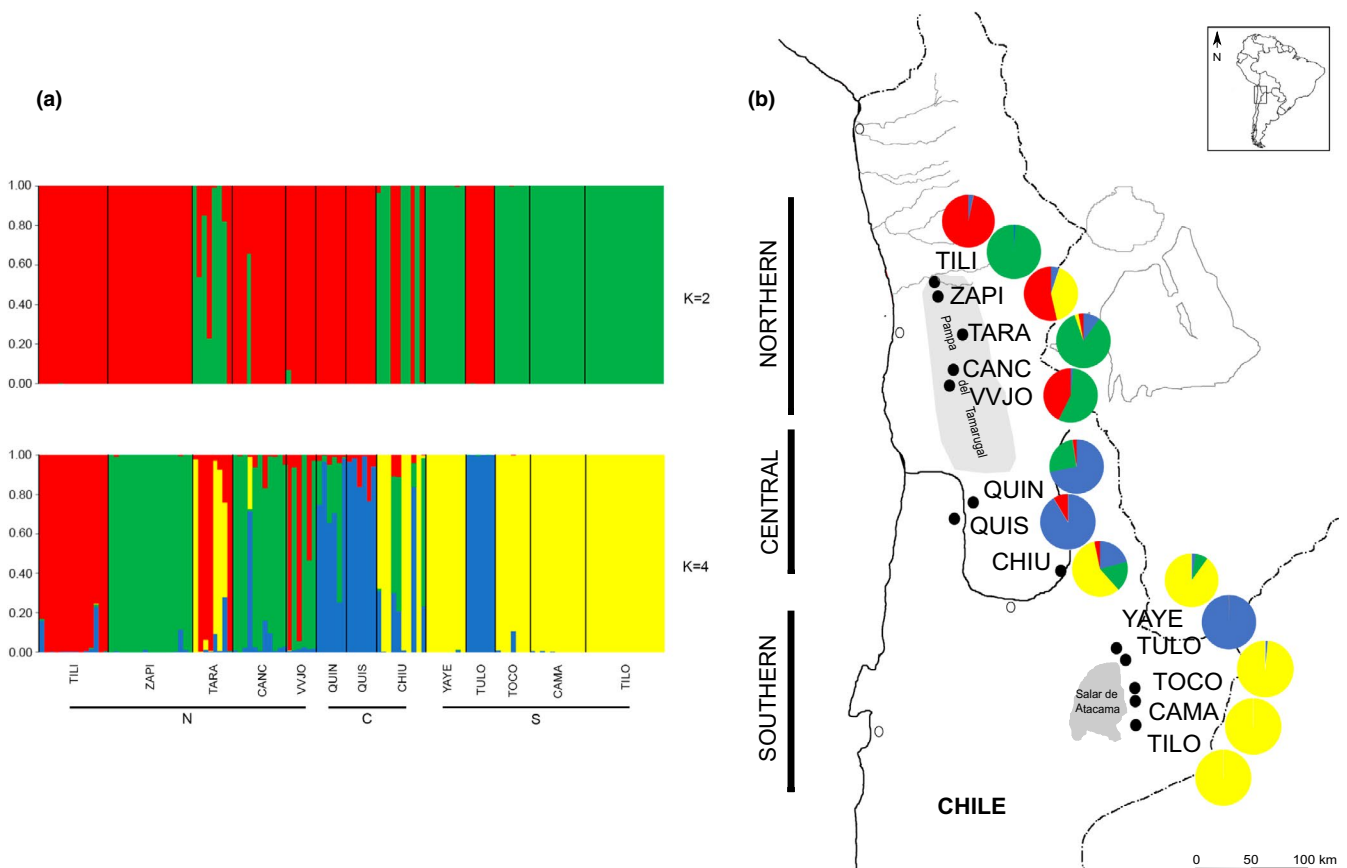


FIGURE 4 (a) Clustering of individuals for $K = 2$ and $K = 4$ based on STRUCTURE analysis considering *no-admixture* model. Each individual is represented by a vertical bar that is partitioned into colored segments that represent the individual's estimated membership fractions. Same color in different individuals indicates that they are belonging to the same cluster. (b) Pie charts represent combined genetic ancestries of all individuals sampled in each population, as obtained from STRUCTURE for $K = 4$. The four different colors correspond to four different genetic clusters. TILI: Tiliviche, ZAPI: Zapiga, TARA: Tarapacá, CANC: Canchones, VVJO: Valle Viejo, QUIN: Quillagua Norte, QUIS: Quillagua Sur, CHIU: Chiu-Chiu, YAYE: Yaye, TULO: Tulo, TOCO: Toconao, CAMA: Camar, TILO: Tilomonte. N: northern, C: central, S: southern

when the analysis was performed considering the northern ($r = .12$, $p = .020$), central ($r = .29$, $p = .001$), and southern ($r = .15$, $p = .000$) basin populations separately (Figure 5). This result is consistent with the model of isolation by distance although the correlations obtained can be considered very low, especially within basins.

4 | DISCUSSION

Prosopis populations in the Atacama Desert showed relatively high levels of genetic diversity (mean $H_O = 0.61$), comparable to the results from natural populations of *P. alba*, *P. flexuosa*, and *P. chilensis* (Section *Algarobia*) inside and outside Chile with different levels of isolation (Bessega et al., 2016, 2018; Moncada et al., 2019). These results are partially expected in the populations here studied, as individuals from these species are co-occurring and the variability indices from these different species, based on SSR, are almost equal. Moreover, isozyme data yield similar genetic variability estimates and low genetic differentiation among species of Section *Algarobia* (Bessega et al., 2000; Saidman & Vilardi, 1987). As a consequence of geographic isolation, it is expected that genetic diversity within populations declines, associated with genetic drift or inbreeding (Bessega et al., 2018; Grivet et al., 2008). However, it may be that the geographic isolation consequences have not yet produced detectable effects on genetic diversity due to the long generation time of *Prosopis* species.

Genetic diversity can be spatially structured at different levels, such as landscape, population, or between nearby individuals, due to different ecological process of habitat characteristics such as population density and community structure operating in natural populations (Zeng et al., 2012). At a global level, *Prosopis* populations in the Chilean Desert show low but significant genetic differentiation

($F_{ST} = 0.128$, $F_{ST-ENA} = 0.129$, and $D_{JOST} = 0.238$) and is consistent with the differentiation evaluated by the discriminant analysis of the principal components (DAPC), where differentiation is not observed at the uppermost hierarchical level as populations from northern, central, and southern basins were not grouped forming clusters. In agreement, low levels of variation were explained by AMOVA between basins (7.40%). Isolation between the studied basins can be attributed to ancient biogeographical processes linked to aridity fluctuations and geomorphological events that may have driven biological differentiation (Baranzelli et al., 2014; Ossa et al., 2013; Viruel et al., 2012). Significant differentiation patterns between the northern and southern groups of *P. chilensis* population in the Coquimbo Region (Chile) were attributed to differentiation dated more than 1 million years ago that has been blurred by more recent gene flow (Moncada et al., 2019). A regional examination of the Atacama Pacific Paleosurface (Evenstar et al., 2017) indicated that the basins here studied were established since ~8 to 3 Ma, and it is plausible to explain our results in a similar way, attributing that the ancient genetic differentiation between the northern, central, and southern basins has been blurred by more recent gene flow. Here, a relatively high number of migrants per generation were estimated at global level ($Nm = 1.7$); however, the paleo-archeological evidences indicate that *Prosopis* species from Section *Algarobia* were not present in the Atacama Desert up to the Formative period (3,000–1,700 cal BP) ruling out so ancient possibility (McRostie et al., 2017; Ugalde et al., 2020).

When variation distribution is analyzed at lower hierarchical levels, most of the variation (79.3%) was found at the lowest level (individuals), which is expected in outcrossing species as *Prosopis* (Bessega et al., 2019; Chequer Charan et al., 2020; Roser et al., 2017). However, the AMOVA indicated that the genetic

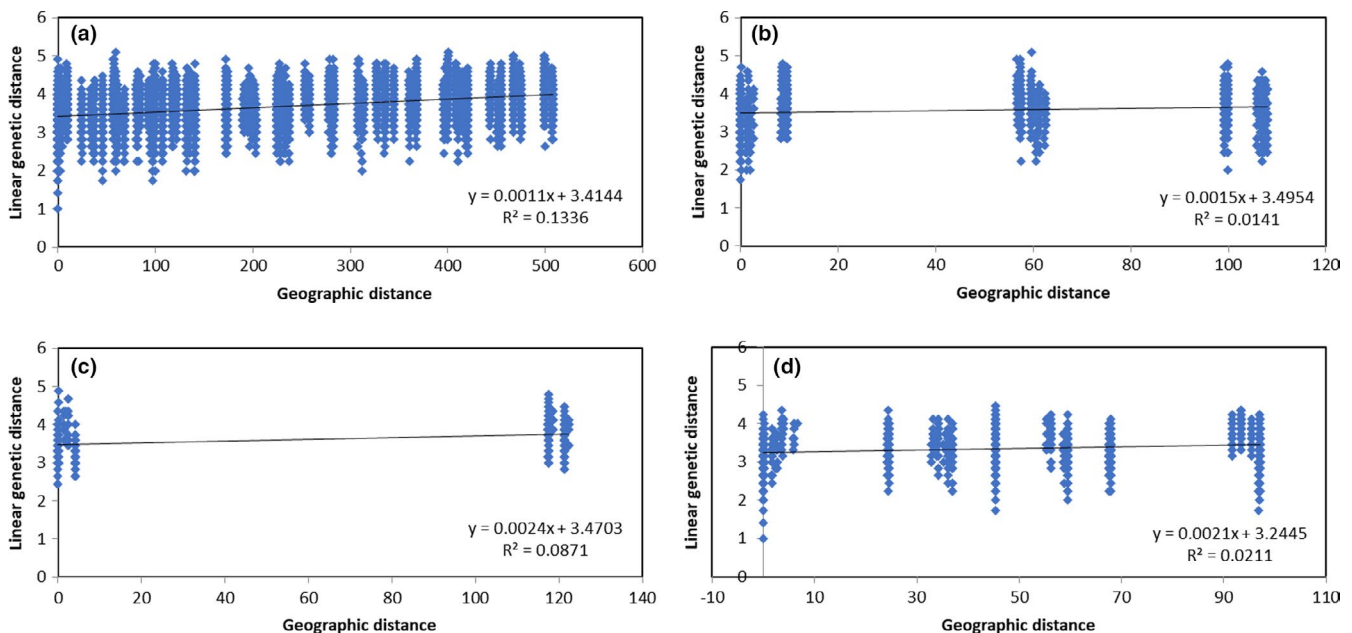


FIGURE 5 Pairwise genetic distances and geographical distances obtained from SSR considering all (a), the northern (b), the central (c), and the southern (d) populations studied in the Atacama Desert

variation between populations within basins was low and significant (7.47%) and almost the same as the percentage obtained considering the between-basin component (7.4%). But the migrants per generation estimations within basins were up to four times higher than the Nm estimate obtained for the total basins ($Nm = 2.6, 6.9,$ and 2.5 within northern, central, and southern basins, respectively). Although Mantel's tests were also significant, indicating that nearby populations tend to be genetically more similar than expected by chance and suggesting gene flow restriction both at short and long distances, the low correlation estimates suggest a high degree of gene flow occurring within basins. According to these results, the geographic isolation that occurs between the populations within each of the basins seems to be able to be crossed by the natural dispersers of *Prosopis* easier than the large distances that separate the different basins considered here. These results are compatible with endozoic seed dispersal associated with short-distance spread described for *Prosopis* (Burkart, 1976; Keys, 1993; Mares et al., 1977; Reynolds, 1954). Although native vectors for *Prosopis* have not been exhaustively studied in the area, these might be foxes, small rodents, and birds (Bessega et al., 2006; Burkart, 1976; Campos & Ojeda, 1997; Carevic et al., 2019; Maldonado et al., 2014). In arid zones of South America (southern Peru and northern Argentina), the diet of the fox (*Lycalopex culpaeus*) was reported to be comprised up to 69% of plants, and small quantity of *P. alba* seed plant remains in scats of *L. culpaeus* in the Atacama Desert (Carevic et al., 2019). Preliminary analyses being made on archaeological camelid coprolites (ca. 2,000 years BP) from several sites located in the Pampa del Tamarugal and Loa River basins do not show the preservation of entire seed of *algarrobo*, which, however, have been reported in archaeological camelid dung in northern Peru (Shimada & Shimada, 1985).

The isolation by distance (IBD) detected both globally and within each basin can also be discussed in conjunction with the structure and pairwise differentiation results. Since many of the populations studied are constituted by more than one taxonomic species, it is possible to expect a high level of admixture. However, the level of admixture detected by the STRUCTURE analysis (both at $K = 2$ and $K = 4$) can be considered low. For $K = 4$, the populations with admixture signals were only six out of thirteen and are mainly located in the central basin (QUIN, QUIS, and CHIU) and in less proportion in the south of the northern basin (TARA, CANC, and VVJO). As predicted by the IBD model, neighbor populations are not expected to be more similar to each other than the distant ones. Here, we detected inconsistencies in F_{ST} , F_{ST-ENA} , and D_{JOST} differentiation indices among population based on a pairwise analysis considering the basins. Those inconsistencies were found in both the northern and southern basins. In the north, the ZAPI-TILI and ZAPI-TARA differentiation indices were comparatively higher than the ones detected within all the northern basin. Similarly, in the south, TULO individuals are much more differentiated from the remaining southern populations. Plausible causes that could explain the inconsistencies in pairwise F_{ST} estimations are genetic drift and non-natural gene flow patterns. Small isolated populations are particularly susceptible to genetic drift and inbreeding, which are thought to reduce genetic

diversity. The loss of genetic diversity in turn enhances inbreeding and finally results in inbreeding depression (Frankham et al., 2002). Here, no general trend to heterozygote excess or deficiency was detected and F_{IS} estimations fit the expectation for populations under the Hardy-Weinberg equilibrium. According to this, genetic drift does not appear to be the cause that explains the differentiation inconsistencies; however, it must be considered a possible source of error. The second plausible cause that could explain F_{ST} , F_{ST-ENA} , and D_{JOST} inconsistencies is the occurrence of non-natural gene flow. Gene flow mediated by humans is a valid possibility and allows us to propose that in addition to natural dispersal, the transport of *algarrobo* pods/seeds may have been done by humans. Accelerator mass spectrometry dating of *algarrobo* endocarps throughout several archeological and paleoecological sites of the Chilean Atacama shows that trees from Section *Algarobia* appeared around 3,000 years before present as a consequence of human introduction together with other domesticated plants brought to the Atacama Desert (McRostie et al., 2017). The fact of having found various species belonging to the Section *Algarobia* in the Atacama oases and the SSR results, agree with the anthropic movement proposal, being possible that human movements explain the displacement of the fruits (Correa & García, 2014; Molina, 2017; Núñez, 1976; Núñez & Briones, 2017). Consequently, there are various species living together in the oases and an unnatural gene flow pattern is produced. The admixture pattern detected in the central basin is also compatible with its position within the Loa River course, which functioned as a sociocultural corridor throughout millennia. Quillagua oasis has been defined as a node of interregional interchange, whereas caravans and humans often passed in the transit between the coast and the highlands (Agüero et al., 2006; Briones, 2006; Berenguer & Pimentel, 2017; Cases & Montt, 2013; Gallardo, 2017; Martínez, 1998; Pimentel et al., 2017; Sanhueza, 1992). During historical times, the miner industry heavily disturbed the landscape especially within the northern basin. This industry reduced the use of *algarrobo* to coal and wood, but also to forage for European herbivores, especially mules which transit thoroughly from the coast to beyond the Andes (Carmona, 2018). These animals might have favored the encroachment of some species within oases (Brown & Archer, 1989); however, we cannot rule out that the patterns found were produced also in pre-Columbian times, where a long history of interchange has been acknowledged from archaeological evidences (Uribe et al., 2020).

Historically, Atacama populations benefit from both *algarrobo* and *chañar* (*Geoffroea decorticans*) trees (Martínez, 1998). A recent study by Contreras et al. (2018) on the genetic structure of eight *Geoffroea decorticans* populations from the Atacama Desert has concluded that at least two different origins could explain the genomic differences in *chañar* populations in northern Chile. Similarly, if we consider the ΔK criteria, our structure results let us propose that two origins are also possible for *algarrobo* in Atacama ($K = 2$). A first approximation could be to link the two genetic groups and the altitude at which the different populations studied are found (Table 1). However, the simple observation of the altitudes and the genetic groups rules out this possibility. A plausible proposition to consider

may be that northern basin may have received influence of populations from Bolivia and/or Peru, whereas southern and central samples could have been influenced by Argentinean populations despite the geographical Andes barrier. Although future studies may confirm this proposal, this interpretation is supported by archeological, ethnographical, and ethnohistorical data that show that in the Loa River and Salar de Atacama basin, people were interdigitated with communities from South Lipez (Bolivia Highlands), although communities from the *Salar the Atacama* basin were also connected and interdigitated with northwestern Argentina, especially from Toconao to the south (Hidalgo, 1995; Martínez, 1998).

In summary, we have assessed the genetic diversity of *Prosopis* populations (Section *Algarobia*) located in the oases of the Atacama Desert considering the genetic variability and its distribution, genetic differentiation, gene flow among populations, IBD patterns, and genetic structure. We have discussed the genetic patterns in reference to ecological, historical, and sociocultural characteristics. Based on the analyses of genetic parameters, we propose that the genetic pattern may be the consequence of natural gene flow together with anthropic transport of a wide variety of *algarrobo*.

ACKNOWLEDGMENTS

This research was funded by Agencia Nacional de Investigación y Desarrollo, Chile (FONDECYT 11180805, 1160045; Anillo SOC1405), Agencia Nacional de Promoción Científica y Tecnológica, ANPCYT (PICT2016-0388), and Universidad de Buenos Aires, Argentina, UBA (UBACYT 20020190200106BA). We thank Federico Luebert, Enzo Solimano, Eduth Chamorro, Nancy Cortés, Ibar Escobar, Cristian Keith from Hacienda Tiliviche, CONAF staff Fundo El Refresco, Dra. Andrea González and staff of Estación Canchones, Universidad Arturo Prat, and personnel of Hotel Tierra Atacama. We acknowledge to the anonymous reviewers and editors for their valuable suggestions that helped us to improve the MS.

CONFLICT OF INTEREST

None.

AUTHOR CONTRIBUTION

Cecilia Bessega: Conceptualization (equal); Formal analysis (equal); Funding acquisition (equal); Investigation (equal); Methodology (equal); Project administration (equal); Resources (equal); Software (equal); Supervision (equal); Validation (equal); Visualization (equal); Writing-original draft (equal); Writing-review & editing (equal). **Carolina Pometti:** Formal analysis (equal); Funding acquisition (equal); Methodology (equal); Resources (equal); Software (equal); Writing-original draft (equal); Writing-review & editing (equal). **Renee H Fortunato:** Data curation (equal); Resources (equal); Writing-original draft (equal); Writing-review & editing (equal). **Fransisca Greene :** Resources (equal); Writing-original draft (equal); Writing-review & editing (equal). **Calogero Santoro:** Funding acquisition (equal); Resources (equal); Supervision (equal); Writing-original draft (equal); Writing-review & editing (equal). **Virginia McRostie:** Conceptualization (equal); Funding acquisition (equal);

Investigation (equal); Project administration (equal); Resources (equal); Supervision (equal); Writing-original draft (equal); Writing-review & editing (equal).

DATA AVAILABILITY STATEMENT

Sampling locations: Table 1. Microsatellite genotypic data will be submitted to Dryad and are available upon request (cecib@ege.fcen.uba.ar).

ORCID

Cecilia Bessega  <https://orcid.org/0000-0002-8575-1828>

Carolina Pometti  <https://orcid.org/0000-0003-0122-6338>

Reneé Fortunato  <https://orcid.org/0000-0002-9311-0967>

Calogero M. Santoro  <https://orcid.org/0000-0002-3702-8408>

Virginia McRostie  <https://orcid.org/0000-0002-3146-3345>

REFERENCES

- Agapow, P. M., & Burt, A. (2001). Indices of multilocus linkage disequilibrium. *Molecular Ecology Notes*, 1, 101–102. <https://doi.org/10.1046/j.14718278.2000.00014.x>
- Agüero, C., Ayala, P., Uribe, M., Carrasco, C., & Cases, B. (2006). El Período Formativo desde Quillagua, Loa Inferior (Norte de Chile). In H. Lechtman (Ed.), *Esfemas de interacción prehistóricas y fronteras nacionales modernas: Los Andes Sur Centrales* (pp. 449–502). Instituto de Estudios Peruanos.
- Arriagada, C., Cobbold, P. R., & Roper, P. (2006). Salar de Atacama basin: A record of compressional tectonics in the central Andes since the mid-Cretaceous. *Tectonics*, 25, TC1008.
- Baranzelli, M. C., Johnson, L. A., Cosacov, A., & Sérsic, A. N. (2014). Historical and ecological divergence among populations of *Monttea chilensis* (Plantaginaceae), an endemic endangered shrub bordering the Atacama Desert. *Chile. Evolutionary Ecology*, 28(4), 751–774.
- Barros, S. (2010). El género *Prosopis*, valioso recurso forestal de las zonas áridas y semiáridas de América, Asia y África. *Ciencia E Investigación Forestal*, 16(1), 91–128.
- Berenguer, J., & Pimentel, G. (2017). Introducción al estudio de los espacios internodales y su aporte a la historia, naturaleza y dinámica de las ocupaciones humanas en zonas áridas. *Estudios Atacameños. Arqueología Y Antropología Surandinas*, 56, 3–11.
- Bessega, C., Cony, M., Saidman, B., Aguiló, R., Villagra, P., Alvarez, J., Pometti, C., & Vilardi, J. C. (2019). Genetic diversity and differentiation among provenances of *Prosopis flexuosa* DC (Leguminosae) in a progeny trial: Implications for arid land restoration. *Forest Ecology and Management*, 443, 59–68. <https://doi.org/10.1016/j.foreco.2019.04.016>
- Bessega, C., Ferreyra, L., Julio, N., Montoya, S., Saidman, B. O., & Vilardi, J. C. (2000). Mating system parameters in species of genus *Prosopis* (Leguminosae). *Hereditas*, 132(1), 19–27.
- Bessega, C., Ferreyra, L. I., Vilardi, J. C., & Saidman, B. O. (2000). Unexpected low genetic differentiation among allopatric species of Section *Algarobia* of *Prosopis* (Leguminosae). *Genetica*, 109, 255–266.
- Bessega, C., Pometti, C., Campos, C., Saidman, B. O., & Vilardi, J. C. (2017). Implications of mating system and pollen dispersal indices for management and conservation of the semi-arid species *Prosopis flexuosa* (Leguminosae). *Forest Ecology and Management*, 400, 218–227.
- Bessega, C., Pometti, C. L., Ewens, M., Saidman, B. O., & Vilardi, J. C. (2011). Strategies for conservation for disturbed *Prosopis alba* (Leguminosae, Mimosoidae) forests based on mating system and pollen dispersal parameters. *Tree Genetics and Genomes*, 8, 277–288. <https://doi.org/10.1007/s11295-011-0439-6>

- Bessegga, C., Pometti, C. L., Ewens, M., Saidman, B. O., & Vilardi, J. C. (2016). Fine-scale spatial genetic structure analysis in two Argentine populations of *Prosopis alba* (Mimosoideae) with different levels of ecological disturbance. *European Journal of Forest Research*, 135, 495–505. <https://doi.org/10.1007/s10342-016-0948-9>
- Bessegga, C., Pometti, C., López, R. P., Larrea-Alcázar, D., Fortunato, R. H., Saidman, B. O., & Vilardi, J. C. (2018). Genetic diversity and differentiation among *Prosopis alba* (Leguminosae) populations from dry valleys of Bolivia with different levels of human disturbance and altitude. *Ecology and Evolution*, 8(22), 11309–11321. <https://doi.org/10.1002/ece3.4610>
- Bessegga, C., Pometti, C. L., Miller, J. T., Watts, R., Saidman, B. O., & Vilardi, J. C. (2013). New microsatellite loci for *Prosopis alba* and *P. chilensis* (Fabaceae). *Applications in Plant Sciences*, 1(5), 1200324. <https://doi.org/10.3732/apps.1200324>
- Bessegga, C., Vilardi, J. C., & Saidman, B. O. (2006). Genetic relationships among American species of the genus *Prosopis* (Mimosoideae, Leguminosae) inferred from ITS sequences: Evidence for long-distance dispersal. *Journal of Biogeography*, 33, 1905–1915. <https://doi.org/10.1111/j.1365-2699.2006.01561.x>
- Bougard, S., & Dray, S. (2018). Supervised multiblock analysis in R with the *ade4* package. *Journal of Statistical Software*, 86(1), 1–17. <https://doi.org/10.18637/jss.v086.i01>
- Briones, L. (2006). The geoglyphs of the north Chilean desert: An archaeological and artistic perspective. *Antiquity*, 80, 9–24.
- Brown, J. R., & Archer, S. (1989). Woody plant invasion of grasslands: Establishment of honey mesquite (*Prosopis glandulosa* var. *glandulosa*) on sites differing in herbaceous biomass and grazing history. *Oecologia*, 80(1), 19–26.
- Burkart, A. (1976). A monograph of the genus *Prosopis* (Leguminosae subfam. Mimosoideae). *Journal Arnold Arboretum*, 57(3–4), 217–249; 450–525.
- Burkart, A., & Simpson, B. B. (1977). The genus *Prosopis* and annotated key to the species of the world. In B. B. Simpson (Ed.), *Mesquite. Its biology in two Desert Scrub Ecosystems* (pp. 201–216). US/IBP Synthesis Series 4. Hutchinson & Ross, Inc.
- Campos, C., & Ojeda, R. A. (1997). Dispersal and germination of *Prosopis flexuosa* (Fabaceae) seeds by desert mammals in Argentina. *Journal of Arid Environments*, 35, 707–714.
- Capparelli, A. (2007). Los productos alimenticios derivados de *Prosopis chilensis* (Mol.) Stuntz y *P. flexuosa* DC., Fabaceae, en la vida cotidiana de los habitantes del NOA y su paralelismo con el algarrobo europeo. *Kurtziana*, 33(1), 1–19.
- Carevic, F. C., Carevic, A., & Delatorre, J. (2012). Historia natural del género *Prosopis* en la Región de Tarapacá. *Idesia*, 30(3), 113–117.
- Carevic, F. S., Carmona, E. R., Cartes, F., & Taucare, F. (2019). Contrasting variations in the diet of the Andean fox *Lycalopex culpaeus* Molina, 1782 on geographical and environmental scales in the Atacama Desert. *Mammalia*, 83, 439–446. <https://doi.org/10.1515/mammalia-2018-0130>
- Carmona, J. (2018). Alfalfa y minería en el desierto surandino. *Revista Chilena De Antropología*, 37, 213–229. <https://doi.org/10.5354/0719-1472.2018.49502>
- Cascante, A., Quesada, M., Lobo, J. J., & Fuchs, E. A. (2002). Effects of dry forest fragmentation on the reproductive success and genetic structure of the tree *Samanea saman*. *Conservation Biology*, 16, 137–147.
- Cases, B., & Montt, I. (2013). Las tunicas rupestres pintadas de la cuenca media y alta del Loa vistas desde Quillagua (norte de Chile). *Chungara, Revista De Antropología Chilena*, 45(2), 249–275.
- Chapuis, M. P., & Estoup, A. (2007). Microsatellite null alleles and estimation of population differentiation. *Molecular Biology and Evolution*, 24(3), 621–631.
- Chequer Charan, D., Pometti, C., Cony, M., Vilardi, J. C., Saidman, B. O., & Bessegga, C. (2020). Genetic variance distribution of SSR markers and economically important quantitative traits in a progeny trial of *Prosopis chilensis* (Leguminosae): Implications for the 'Algarrobo' management programme. *Forestry*, 1–15. <https://doi.org/10.1093/forestry/cpaa026>
- Contreras, R., Porcile, V., & Aguayo, F. (2018). Microsatellites reveal a high genetic differentiation among native *Geoffroea decorticans* populations in Chilean Atacama Desert. *Boletín Sociedad Argentina De Botánica*, 54, 225–240.
- Cony, M. A. (1996). Genetic variability in *Prosopis flexuosa* D.C. a native tree of Monte phytogeography province, Argentina. *Forest Ecology and Management*, 87, 41–49.
- Correa, I., & García, M. (2014). Cerámica y contextos de tránsito en la ruta Calama-Quillagua, vía Chug-chug, para la primera sección Desierto de Atacama, norte de Chile. *Chungara, Revista De Antropología Chilena*, 46(1), 25–50.
- Dray, S., & Dufour, A. (2007). The ade4 package: Implementing the duality diagram for ecologists. *Journal of Statistical Software*, 22, 1–20. <https://doi.org/10.18637/jss.v022.i04>
- Dray, S., Dufour, A., & Chessel, D. (2007). The ade4 package – II: Two-table and K-table methods. *R News*, 7, 47–52. <https://cran.r-project.org/doc/Rnews/>
- Earl, D. A., & vonHoldt, B. M. (2012). STRUCTURE HARVESTER: A website and program for visualizing STRUCTURE output and implementing the Evanno method. *Conservation Genetics Resources*, 4, 359–361.
- Evanno, G., Regnaut, S., & Goudet, J. (2005). Detecting the number of clusters of individuals using the software STRUCTURE: A simulation study. *Molecular Ecology*, 14, 2611–2620.
- Evenstar, L. A., Mather, A. E., Hartley, A. J., Stuart, F. M., Sparks, R. S. J., & Cooper, F. J. (2017). Geomorphology on geologic timescales: Evolution of the late Cenozoic Pacific paleosurface in Northern Chile and Southern Peru. *Earth Science Reviews*, 171, 1–27. <https://doi.org/10.1016/j.earscirev.2017.04.004>
- Frankham, R., Ballou, J. D., & Briscoe, D. A. (2002). *Introduction to conservation genetics*. Cambridge University Press. <https://doi.org/10.1017/CBO9780511808999>
- Gajardo, R. (1994). *La Vegetación Natural de Chile. Clasificación y Distribución Geográfica* (p. 165). Editorial Universitaria, Santiago.
- Gallardo, F. (2017). Arqueología de los intercambios recíprocos, costa y oasis del río Loa Medio e Inferior, época Formativa (500 a.C.-700 d.C.). In F. Gallardo, B. Ballester, & N. Fuenzalida (Eds.), *Monumentos Funerarios de la Costa del Desierto de Atacama. Los Cazadores Recolectores Marinos y sus Intercambios (500 a.C. - 700 d.C.)* (pp. 15–22). Sociedad Chilena de Arqueología, Centro de Estudios Interculturales e Indígenas, Santiago.
- Gayo, E. M., Latorre, C., Jordan, T. E., Nester, P. L., Estay, S. A., Ojeda, K., & Santoro, C. M. (2012). Late Quaternary hydrological and ecological change in the hyperarid core of the northern Atacama Desert (~21°S). *Earth Science Reviews*, 113, 120–140.
- Gayo, E. M., Latorre, C., Santoro, C. M., Maldonado, A., & De Pol-Holz, R. (2012). Hydroclimate variability on centennial timescales in the low-elevation Atacama Desert over the last 2,500 years. *Climate of the Past*, 8, 287–306.
- Genisse, J., Palacios, R. A., Hoc, P. S., Carrizo, R., Moffat, I., Mom, M. P., Agullo, M. A., Picca, P., & Torregosa, S. (1990). Observaciones sobre la biología floral de *Prosopis* (Leguminosae, Mimosoideae). II Fases florales y visitantes en el distrito Chaqueño Serrano. *Darwiniana*, 30, 71–85.
- Goudet, J. (2005). Hierfstat, a package for R to compute and test hierarchical F statistics. *Molecular Ecology Notes*, 5, 184–186.
- Grivet, D., Sork, V. L., Westfall, R. D., & Davis, F. W. (2008). Conserving the evolutionary potential of California valley oak (*Quercus lobate* Née): A multivariate genetic approach to conservation planning. *Molecular Ecology*, 17, 139–156.
- Hardy, O. J., & Vekemans, X. (2002). SPAGEDi: A versatile computer program to analyse spatial genetic structure at the individual or population levels. *Molecular Ecology Notes*, 2, 618–620.

- Hidalgo, J. (1995). The Indians of Southern South America in the middle of the sixteenth century. In L. Bethell (Ed.), *The Cambridge History of Latin America*, Vol. XI (pp. 19–24). Cambridge University Press.
- Houston, J., & Hartley, A. J. (2003). The central Andean west-slope rain-shadow and its potential contribution to the origin of Hyper-Aridity in the Atacama Desert. *International Journal of Climatology*, 23(12), 1453–1464. <https://doi.org/10.1002/joc.938>
- Jayne, R. S., Pollyea, R. M., Dodd, J. P., Olson, E. J., & Swanson, S. K. (2016). Spatial and temporal constraints on regional-scale groundwater flow in the Pampa del Tamarugal Basin, Atacama Desert, Chile. *Hydrogeology Journal*, 24(8), 1921–1937. <https://doi.org/10.1007/s10040-016-1454-3>
- Jombart, T. (2008). Adegenet: A R package for the multivariate analysis of genetic markers. *Bioinformatics*, 24, 1403–1405. <https://doi.org/10.1093/bioinformatics/btn129>
- Jombart, T., & Ahmed, I. (2011). Adegenet 1.3-1: New tools for the analysis of genome wide SNP data. *Bioinformatics*, 27(21), 3070–3071.
- Jombart, T., Devillard, S., & Balloux, F. (2010). Discriminant analysis of principal components: A new method for the analysis of genetically structured populations. *BMC Genetics*, 11, 94.
- Jost, L. (2008). G_{ST} and its relatives do not measure differentiation. *Molecular Ecology*, 17, 4015–4026. <https://doi.org/10.1111/j.1365-94X.2008.03887.x>
- Jump, A. S., & Penuelas, J. (2006). Genetic effects of chronic habitat fragmentation in a wind-pollinated tree. *Proceedings of the National Academy of Sciences of the United States of America*, 103, 8096–8100. <https://doi.org/10.1073/pnas.0510127103>
- Kamvar, Z. N., Brooks, J. C., & Grunwald, N. J. (2015). Novel R tools for analysis of genome-wide population genetic data with emphasis on clonality. *Frontiers in Genetics*, 6, 208. <https://doi.org/10.3389/fgene.2015.00208>
- Kamvar, Z. N., Tabima, J. F., & Grunwald, N. J. (2014). Poppr: An R package for genetic analysis of populations with clonal, partially clonal, and/or sexual reproduction. *PeerJ*, 2, 281. <https://doi.org/10.7717/peerj.281>
- Keenan, K., McGinnity, P., Cross, T. F., Crozier, W. W., & Prodohl, P. A. (2013). Diversity: An R package for the estimation and exploration of population genetics parameters and their associated errors. *Methods in Ecology and Evolution*, 4, 782–788. <https://doi.org/10.1111/2041-210X.12067>
- Keys, R. N. (1993). *Mating systems and pollination biology of velvet mesquite (Prosopis velutina Wooten)*. Thesis dissertation. University of Arizona.
- Latorre, C., Betancourt, J. L., Rech, J. A., Quade, J., Holmgren, C., Placzek, C., Maldonado, A., Vuille, M., & Rylander, K. A. (2005). In M. Smith, & P. Hesse (Eds.), *Late Quaternary history of the Atacama Desert*. In 23° S: *The Archaeology and Environmental History of the Southern Deserts* (pp. 73–90). National Museum of Australia Press.
- Latorre, C., Betancourt, J. L., Rylander, K. A., & Quade, J. (2002). Vegetation invasions into absolute desert: A 45,000-yr rodent midden record from the Calama-Salar de Atacama basins, northern Chile (22–24°S). *Geological Society of America Bulletin*, 114(3), 349–366.
- Loiselle, B. A., Sork, V. L., Nason, J., & Graham, C. (1995). Spatial genetic structure of a tropical understory shrub, *Psychotria officinalis* (Rubiaceae). *American Journal of Botany*, 82, 1420–1425.
- Lowe, A. J., Boshier, D., Ward, M., Bacles, C. F. E., & Navarro, C. (2005). Genetic resource impacts of habitat loss and degradation; reconciling empirical evidence and predicts theory for neotropical trees. *Heredity*, 95, 255–273.
- Maldonado, D., Pacheco, L. F., & Saavedra, L. V. (2014). Legitimidad en la dispersión de semillas de algarrobo (*Prosopis flexuosa*, Fabaceae) por zorro andino (*Lycalopex culpaeus*, Canidae) en el Valle de La Paz (Bolivia). *Ecología En Bolivia*, 49(2), 93–97.
- Marzuela, M. A., Vázquez-Suñé, E., Ayora, C., García-Gil, A., & Palma, T. (2019). Hydrodynamics of salt flat basins: The Salar de Atacama example. *Science of the Total Environment*, 651, 668–683.
- Mares, M. A., Enders, F. A., Kingsolver, J. M., Neff, J. L., & Simpson, B. B. (1977). In B. B. Simpson (Ed.), *Mesquite: Its biology in two desert ecosystems, US/IBP synthesis Series*, Vol. 7 (pp. 124–149). Dowden Hutchinson and Ross.
- Marquet, P. A., Bozinovic, F., Bradshaw, G. A., Cornelius, C. C., González, H., Gutiérrez, J. R., Hajek, E. R., Lagos, J. A., López-Cortés, F., Núñez, L., Rosello, E. F., Santoro, C. M., Samaniego, H., Standen, V. G., Torres-Mura, J. C., & Jaksic, F. (1998). Los ecosistemas del Desierto de Atacama y área andina adyacente en el norte de Chile. *Revista Chilena De Historia Natural*, 71(4), 593–617.
- Martínez, J. L. (1998). *Pueblos del chañar y el algarrobo: Los Atacamas en el siglo XVII*. DIBAM.
- McRostie, V. B., Gayó, E. M., Santoro, C. M., De Pol-Holz, R., & Latorre, C. (2017). The pre-Columbian introduction and dispersal of Algarrobo (*Prosopis*, Section *Algarobia*) in the Atacama Desert of northern Chile. *PLoS ONE*, 12(7), e0181759. <https://doi.org/10.1371/journal.pone.0181759>
- Molina, R. (2017). *En la huella está el peligro, arrierías de puna y desierto*. Qillqa Ediciones. Ocho Libro Editores.
- Moncada, X., Plaza, D., Stoll, A., Payacan, C., Seelenfreund, D., Martínez, E., Bertin, A., & Squeo, F. A. (2019). Genetic diversity and structure of the vulnerable species *Prosopis chilensis* (Molina) Stuntz in the Coquimbo Region, Chile. *Gayana Botanica*, 76(1), 91–104.
- Mortimer, C. (1980). Drainage evolution in the Atacama Desert of northernmost Chile. *Revista Geológica De Chile*, 11, 3–28.
- Mottura, M. C., Finkeldey, R., Verga, A. R., & Gailing, O. (2005). Development and characterization of microsatellite markers for *Prosopis chilensis* and *Prosopis flexuosa* and cross-species amplification. *Molecular Ecology Notes*, 5, 487–489.
- Muñoz, M. (1981). *Estudio de las especies del género Prosopis en la Pampa del Tamarugal*. Tomo III Análisis dendrológico. Informe Programa Pampa del Tamarugal-Corfo, 9 pp.
- Nei, M. (1978). Estimation of average heterozygosity and genetic distance for small number of individuals. *Genetics*, 89, 583–590.
- Nester, P. L., Gayo, E., Latorre, C., Jordan, T. E., & Blanco, N. (2007). Perennial stream discharge in the hyperarid Atacama Desert of northern Chile during the latest Pleistocene. *Proceedings of the National Academy of Sciences*, 104(50), 19724–19729.
- Núñez, L. (1971). Secuencia y cambio en los asentamientos humanos de la desembocadura del río Loa, en el norte de Chile. *Boletín De La Universidad De Chile*, 112, 3–25.
- Núñez, L. (1976). *Geoglifos y tráfico de caravanas en el desierto chileno*. En *Homenaje al Dr. Gustavo Le Paige, S.J., editado por H. Niemeyer*, pp. 147–201. Universidad del Norte, Antofagasta.
- Núñez, L., & Briones, L. (2017). Tráfico e interacción entre el oasis de Pica y la costa arriega en el desierto tarapaqueño (norte de Chile). *Estudios Atacameños. Arqueología Y Antropología Surandinas*, 56, 133–161.
- Núñez, L., & Santoro, C. (1988). Cazadores de la Puna Seca y Salada del Area Centro Sur Andina (norte de Chile). *Estudios Atacameños*, 9, 13–65.
- Ossa, P. G., Perez, F., & Arnesto, J. J. (2013). Phylogeography of two closely related species of *Nolana* from the coastal Atacama Desert of Chile: Post-glacial population expansions in response to climate fluctuations. *Journal of Biogeography*, 40, 2191–2203.
- Palacios, R. A., & Brizuela, M. M. (2005). *Fabaceae*, parte 13. Subfam. II. *Mimosoideae*, parte 4. Tribu VI. *Mimoseae*, parte B. *Prosopis* L. *Flora Fanerogámica Argentina*, 92, 3–25.
- Peakall, R., & Smouse, P. E. (2012). GenAlEx 6.5: Genetic analysis in excel. Population genetic software for teaching and research—an update. *Bioinformatics*, 28, 2537–2539.
- Peakall, R., Smouse, P. E., & Huff, D. R. (1995). Evolutionary implications of allozyme and RAPD variation in diploid populations of dioecious buffalograss *Buchloe dactyloides*. *Molecular Ecology*, 4, 135–147.
- Pfeiffer, M., Heimsath, A., Santoro, C. M., Latorre, C., Gayo, E. M., Finstad, K., Carrevedo, M. L., Jungers, M., De Pol-Holz, R., Rojas, R.,

- Amundson, R., & McRostie, V. (2018). Chronology, stratigraphy and hydrological modelling of extensive wetlands and paleolakes in the hyperarid core of the Atacama Desert during the late Quaternary. *Journal of Quaternary Science Review*, *197*, 224–245.
- Pimentel, G., Ugarte, F., Blanco, J. F., Torres-Rouff, C., & Pestle, W. J. (2017). Calate: De lugar desnudo a laboratorio arqueológico de la movilidad y el tráfico intercultural prehispánico en el Desierto de Atacama (ca. 7000 ap–550 ap). *Estudios Atacameños*, *56*, 21–56.
- Pritchard, J. K., Stephens, M., & Donnelly, P. (2000). Inference of population structure using multilocus genotype data. *Genetics*, *155*, 945–959.
- Pritchard, J. K., Wen, X., & Falush, D. (2009). *STRUCTURE ver. 2.3*. University of Chicago.
- R Development Core Team. (2020). *R: A Language and Environment for Statistical Computing*. R Foundation for Statistical Computing. Accessed 11 August 2020. <http://www.r-project.org/>
- Reynolds, H. G. (1954). Some interrelations of the Merriam kangaroo rat to velvet mesquite. *Journal of Range Management*, *7*, 176–180.
- Roig, F. A. (1993). Aportes a la Etnobotánica del Género *Prosopis*. In Iadiza (Ed.), *Contribuciones Mendocinas a la quinta Reunión Regional para América Latina y el Caribe de la Red de Forestación del CIID, Unidades*.
- Roser, L., Ferreyra, L. I., Ewens, M., Vilardi, J. C., & Saidman, B. O. (2017). Isolation by distance and stochastic migration in a fragmented population of *Prosopis alba*. *American Journal of Botany*, *104*(2), 313–321.
- Saidman, B. O., & Vilardi, J. C. (1987). Analysis of the genetic similarities among seven species of *Prosopis* (Leguminosae: Mimosoideae). *Theoretical and Applied Genetics*, *75*, 109–116.
- Sanhueza, M. C. (1992). Tráfico caravanero y arriería colonial en el siglo XVI. *Estudios Atacameños*, *10*, 169–182.
- Sarkar, D. (2008). *Lattice: Multivariate Data Visualization with R*. Springer. <http://lmdvr.r-forge.r-project.org>. ISBN 978-0-387-75968-5.
- Shimada, M., & Shimada, I. (1985). Prehistoric llama breeding and herding on the North Coast of Peru. *American Antiquity*, *50*(1), 3–26. <https://doi.org/10.2307/280631>
- Slatkin, M., & Barton, N. H. (1989). A comparison of three indirect methods for estimating average levels of gene flow. *Evolution*, *43*, 1349–1368.
- Smouse, P. E., & Peakall, R. (1999). Spatial autocorrelation analysis of individual multiallele and multilocus genetic structure. *Heredity*, *82*, 561–573. <https://doi.org/10.1038/sj.hdy.6885180>
- SoftGenetics. (2019). *GENEMARKER ver 1.91*. Retrieved from <https://softgenetics.com/GeneMarker.php> (accessed 11 August 2020).
- Sork, V. L., & Smouse, P. E. (2006). Genetic analysis of landscape connectivity in tree populations. *Landscape Ecology*, *21*, 821–836. <https://doi.org/10.1007/s10980-005-5415-9>
- Szpiech, Z. A., Jakobsson, M., & Rosenberg, N. A. (2008). ADZE: A rarefaction approach for counting alleles private to combinations of populations. *Bioinformatics*, *24*, 2498–2504.
- Ugalde, P. C., McRostie, V., Gayo, E. M., García, M., Latorre, C., & Santoro, C. M. (2020). 13,000 years of sociocultural plant use in the Atacama Desert of northern Chile. *Vegetation History and Archaeobotany*. <https://doi.org/10.1007/s00334-020-00783-1>
- Uribe, M., Angelo, D., Capriles, J., Castro, V., De Porras, M. E., García, M., Gayo, E., González, J., Herrera, M. J., Izaurieta, R., Maldonado, A., Mandaković, V., McRostie, V., Razeto, J., Santana, F., Santoro, C., Valenzuela, J., & Vidal, A. (2020). El Formativo en Tarapacá (3000–1000 aP): Arqueología, naturaleza y cultura en la Pampa del Tamarugal, Desierto de Atacama, norte de Chile. *Latin American Antiquity*, *31*(1), 81–102.
- Vilardi, J. C., Saidman, B. O., & Palacios, R. A. (1988). Muestreo según variabilidad. In: FAO (Ed.), *Prosopis en Argentina. Documento preliminar elaborado para el I Taller Internacional sobre Recurso genético y conservación de germoplasma en Prosopis* (pp. 119–124). (Food and Agriculture Organization of the United Nations), Facultad de Ciencias Agropecuarias, UNC-FAO, PIRB, Córdoba, Argentina.
- Villagrán, C., & Castro, V. (2004). *Ciencia Indígena de los Andes del Norte de Chile*. Editorial Universitaria.
- Viruel, J., Catalán, P., & Segarra-Moragues, J. G. (2012). Disrupted phylogeographical microsatellite and chloroplast DNA patterns indicate a vicariance rather than long-distance dispersal origin for the disjunct distribution of the Chilean endemic *Dioscorea biloba* (Dioscoreaceae) around the Atacama Desert. *Journal of Biogeography*, *39*, 1073–1085.
- Vuille, M., Burns, S. J., Taylor, B. L., Cruz, F. W., Bird, B. W., Abbott, M. B., Kanner, L. C., Cheng, H., & Novello, V. F. (2012). A review of the South American monsoon history as recorded in stable isotopic proxies over the past two millennia. *Climate of the Past*, *8*, 1309–1321.
- Wright, S. (1951). The genetical structure of populations. *Annals of Eugenics*, *15*, 323–354. <https://doi.org/10.1111/j.1469-1809.1949.tb02451.x>
- Zeng, X., Michalski, S., Fischer, M., & Durka, W. (2012). Species diversity and population density affect genetic structure and gene dispersal in a subtropical understory shrub. *Journal of Plant Ecology*, *5*, 270–278.

SUPPORTING INFORMATION

Additional supporting information may be found online in the Supporting Information section.

How to cite this article: Bessega C, Pometti C, Fortunato R, Greene F, Santoro CM, McRostie V. Genetic studies of various *Prosopis* species (Leguminosae, Section *Algarobia*) co-occurring in oases of the Atacama Desert (northern Chile). *Ecol Evol*. 2021;11:2375–2390. <https://doi.org/10.1002/ece3.7212>