



Identification of *WRKY* gene family and characterization of cold stress-responsive *WRKY* genes in eggplant

Yan Yang, Jun Liu, Xiaohui Zhou, Songyu Liu and Yong Zhuang

Jiangsu Key Laboratory for Horticultural Crop Genetic Improvement, Institute of Vegetable Crops, Jiangsu Academy of Agricultural Sciences, Nanjing, China

ABSTRACT

Background. WRKY proteins play a vital role in the plants response to different stresses, growth and development. Studies of WRKY proteins have been mainly focused on model plant *Arabidopsis* and a few other vegetable plants. However, the systematical study of eggplant WRKY transcription factor superfamily is scarce.

Methods. Bioinformatics has been used to identify and characterize the eggplant *WRKY* gene family. For the exploration of the differentially expressed *WRKY* genes, two cultivars with different cold-tolerance were used. Finally, we performed a virus-induced gene silencing (VIGS) experiment to verify the functions of *SmWRKY26* and *SmWRKY32*.

Results. Fifty eight (58) genes encoding eggplant WRKY proteins were identified through searching the eggplant genome. Eggplant WRKY proteins could be classified into three groups or seven subgroups in accordance with other plants. WRKY variants were identified from the eggplant. Gene structure analysis showed that the number of intron in eggplant WRKY family was from 0 to 11, with an average of 4.4. Conserved motif analysis suggested that WRKY DNA-binding domain was conserved in eggplant WRKY proteins. Furthermore, RNA-seq data showed that *WRKY* genes were differentially expressed in eggplant response to cold stress. By using VIGS, the two differentially expressed genes-*SmWRKY26* and *SmWRKY32* were verified in response to cold stress.

Discussions. This study provides a foundation for further exploring the functions of WRKY proteins in eggplant response to stresses and eggplant genetic improvement in stresses.

Submitted 25 June 2019
Accepted 21 February 2020
Published 17 March 2020

Corresponding author
Yong Zhuang, jaasz@163.com

Academic editor
Genlou Sun

Additional Information and
Declarations can be found on
page 15

DOI 10.7717/peerj.8777

© Copyright
2020 Yang et al.

Distributed under
Creative Commons CC-BY 4.0

OPEN ACCESS

Subjects Agricultural Science, Biotechnology, Genomics, Molecular Biology

Keywords Eggplant, WRKY transcription factor, Phylogenetic analysis, Intron-exon structure, Conserved motifs, Differentially expressed, Cold stress

INTRODUCTION

WRKY proteins, a family of transcription factor specific in plants, have been identified for more than twenty years since they were first named as SPF1 in sweet potato (*Ipomoea batatas* L.) and seldom found in other species (*Ishiguro & Nakamura, 1994; Eulgem et al., 2000; Rinerson et al., 2015*). They are named as WRKY because of their highly conserved WRKY domain present in the protein sequence. The WRKY domain consists of a conserved core sequence WRKYGQK and a zinc-finger motif (*Eulgem et al., 2000*). WRKY proteins can be classified into three groups based on the number and amino acid sequences of the

conserved WRKY domains. Group I WRKY proteins contain two WRKY domains, while the other two WRKY groups compose of one. The zinc finger motif is different among the three WRKY groups. A C2H2 motif is found in the C-terminal of group I and II WRKY proteins. Instead of C2H2 motif, a C2HC motif is in the C-terminal of group III WRKY proteins (Eulgem et al., 2000). Moreover, group II WRKY proteins can be further divided into five subgroups in accordance with the number and type of amino acids between the C2 in the zinc finger motif (Rushton et al., 2010). WRKY transcription factors can specially bind to the target genes by recognizing the (T)TGAC(C/T) sequences in the promoters of target genes (Yu, Chen & Chen, 2001).

Since its first identification in sweet potato, the functions of WRKY proteins have been focused on biological progresses, including plant responses to biotic stress, abiotic stress and plant development. Several studies have confirmed that WRKY transcription factors are involved in hair development (Verweij et al., 2016), seed size (Luo et al., 2005; Gu et al., 2017), pollen development (Lei et al., 2017), growth types (Yang et al., 2016), flowering time (Yang et al., 2016), fruit ripening (Cheng et al., 2016) and leaf senescence (Ay et al., 2009; Bruslan et al., 2012; Yang et al., 2016). WRKY transcription factors modulates plant hormone signaling pathways (Liu et al., 2017a; Liu et al., 2017b; Jin et al., 2018; Zheng et al., 2018). Despite the important roles in plant growth and development and signal pathways, the most significant function of WRKY proteins studied thoroughly and reported widely is transcription regulation of response to abiotic and biotic stresses. In *Arabidopsis thaliana*, AtABO3, a WRKY protein, was involved in plant response to drought stress (Ren et al., 2010). In rice (*Oryza sativa* L.). OsWRKY11 was induced by heat stress and overexpression of the OsWRKY11 enhanced the tolerance to high temperature stress (Wu et al., 2009). In addition, a vast number of studies reported that WRKY transcription factors were correlated with the resistance to salt stress (Xu et al., 2014; Cai et al., 2017), ozone stress (Gottardini et al., 2016; Zhang et al., 2017) and cold stress (He et al., 2016; Zhang et al., 2016). Furthermore, the functions and roles of WRKY proteins in plant immune response are outstanding. For example, Xu et al. (2006) found that AtWRKY18, AtWRKY40 and AtWRKY60 interacted with each other physically and functionally in an overlapping and antagonistic pattern, which played distinct roles in plant response to two types of pathogens-*P.syringae* and *B.cinerea*. Molecular complementation and gene silencing have confirmed that WRKY33 homologues in Arabidopsis and tomato (*Solanum lycopersicum* L.) played a critical role in resistance to botrytis (Zhou et al., 2015). In a recent report, BROWN PLANTHOPPER RESISTANCE 14 (BPH14), the first planthopper resistance gene, mediated the planthopper resistance by interaction with WRKY46 and WRKY72 that could bind to receptor-like cytoplasmic kinase genes and the callose synthase genes in rice. This result threw a light on the role of WRKYs in plantthopper resistance (Hu et al., 2018). Taken together, it is obvious that WRKY proteins can mediate plant defense mechanism in different manners.

Reports about WRKY proteins in some crops including vegetable crops are relatively limited, although all studies about WRKY proteins have focused mainly on model plant Arabidopsis and a few other plants. For instance, there are more than 70 WRKY proteins in Arabidopsis (Eulgem et al., 2000; Dong, Chen & Chen, 2003), 102 WRKY proteins in

rice (Ross, Liu & She, 2007), 174 WRKY proteins in soybean (*Glycine max* L.) (Yang et al., 2017a; Yang et al., 2017b) and 81 WRKY proteins in tomato (Huang et al., 2012a; Huang et al., 2012b). Eggplant, a world-wide cultivated species, is one of the most important vegetable crops (Wang, Sulli & Fu, 2017; Yang et al., 2017a; Yang et al., 2017b). It is especially popular in Asia, the Middle and Near East, Southern Europe and Africa (Daunay & Lester, 1988). The information of eggplant genome has been released in 2014 (Hirakawa et al., 2014). Several gene families were identified, such as *CBL* and *CIPK* genes (Li et al., 2016), R2R3MYB transcription factor superfamily (Wang et al., 2016), calcium-dependent protein kinases (CDPKs) (Kumari et al., 2017) and *CBF* genes (Zhou et al., 2018a; Zhou et al., 2018b). Previously, Yang et al. (2015) have identified the WRKY proteins in *Solanum melongena* L. and *Solanum torvum* Sw. using the RNA-sequencing data, respectively. Herein, we identified 58 WRKY transcription factors in eggplant through genome-wide analysis. Subsequently, a comprehensive analysis of eggplant WRKY genes was carried out based on their sequences and structures, phylogenetic relationship and expression. Meanwhile, several WRKY genes were found to actively respond to cold stress. *SmWRKY26* and *SmWRKY32* were preliminarily verified involved in regulating eggplant tolerance to cold stress through VIGS. Therefore, cold-responsive genes in eggplant genome were preliminarily validated and the transcript level of these responsive genes may influence eggplant response to cold stress. The results threw light on their probable functions in eggplant response to abiotic stresses and provided a reference for genetic improvement in the stress tolerance.

MATERIALS & METHODS

Plant treatment

In the present study, the seedlings of ‘sanyueqie’ eggplant variety were germinated and grown in a growth chamber at 28 °C with a 16/8 h light/dark photoperiod. The cotyledons of plants were inoculated with the cultures at the cotyledon stage and transferred to 22 °C to induce gene-silencing. When the fourth leaves were fully expanded, the seedlings were transferred into 4 °C for five days, followed by three days of recovery at 28 °C.

Identification of WRKY family in eggplant

To identify the WRKY proteins in eggplant, two methods were employed. We searched the eggplant genome database (<http://eggplant.kazusa.or.jp/>) for WRKY proteins based on the sequences of conserved WRKY domains in Arabidopsis (Dong, Chen & Chen, 2003). All peptide sequences of eggplant were download from the eggplant database. The Hidden Markov Model (HMM) of WRKY was used to BLASTP. The candidate WRKY transcription factors were obtained subsequently. The Pfam databases (<http://pfam.xfam.org/>) and SMART databases (<http://smart.embl-heidelberg.de/>) were used to validate the candidate WRKY proteins. ProtParam tool (<https://web.expasy.org/protparam/>) was used to predict the molecular weights (MWs) and isoelectric points (pIs) of WRKY proteins.

Phylogenetic analysis of SmWRKY proteins

To understand the evolutionary relationship between the eggplant and other plants, multiple sequence alignment was constructed using CLUSTAL W based on the conserved

WRKY domain sequences of WRKY proteins from eggplant, tomato, Arabidopsis and rice (Thompson, Higgins & Gibson, 1994; Ross, Liu & She, 2007). To know the relationship among eggplant WRKY proteins, the phylogenetic tree of eggplant WRKY proteins was conducted with the conserved WRKY domain sequences of WRKY proteins from eggplant. Phylogenetic analysis was performed with MEGA v5.1 (Tamura et al., 2011; Hall, 2013). A phylogenetic tree was produced following the neighbor-joining method.

Intron-exon structure and conserved motifs analysis

The intron-exon structures of *SmWRKY* genes were determined by submitting a txt file of gene features with gff3 format to Gene Structure Displayer Server (<http://gsds.cbi.pku.edu.cn/>) (Hu et al., 2015) (Data S1). The conserved motifs in the WRKY proteins were predicted using the MutipleEm for Motif Elicitation (MEME) program (<http://alternate.meme-suite.org/tools/meme>). The parameters in this study were set as follows: 10 motifs should be found, minimum width was 15, maximum width was 50. Interpro Scan was used to annotate the ten motifs.

Virus-induced gene silencing (VIGS)

Differentially expressed *WRKYs* were identified from the RNA-seq data conducted previously. *SmWRKY26* and *SmWRKY32* were up-regulated in both cultivars after 4 °C treatment and the proteins were encoded by two genes with a high sequence similarity. We selected these two genes to performed a functional verification through VIGS. The fragments of *SmWRKY26* and *SmWRKY32* were amplified using the specific primers (Data S2), verified using VIGS tool in SGN (<http://vigs.solgenomics.net/>) and cloned to TRV (tobacco rattle virus) RNA2 vector (Fu et al., 2005; Huang et al., 2012a; Huang et al., 2012b). The empty vector TRV RNA2 was used as the control. The pTRV1, pTRV2, pTRV2-*SmWRKY26* and pTRV2-*SmWRKY32* were introduced into *agrobacterium* GV3101 with electroporation method, respectively. The mixture of *Agrobacterium* cultures containing pTRV1 and pTRV2 (1:1, v/v), pTRV1 and pTRV2-*SmWRKY26* (1:1, v/v) and pTRV1 and pTRV2-*SmWRKY32* (1:1, v/v) at OD₆₀₀ = 1 were incubated for 4 h in the dark at room temperature before inoculation. Three independent replicates were performed.

Quantative real time-polymerase chain reaction (qRT-PCR)

Specific primers were designed in the website (<http://primer3.ut.ee/>) (Data S2) (Koressaar & Remm, 2007). Total RNA was isolated from the tissue samples using the Trizol reagent according to the manufacturer's instruction. Subsequently, RNA was reverse transcribed using the HiScript II Q Select RT SuperMix for qPCR kit (Vazyme, China). qRT-PCR was performed on an LightCycler 480 II (Roche, Switzerland) using the AceQ®qPCRSYBR® Green Master Mix (Vazyme, China). The PCR conditions consisted of denaturation at 95 °C for 5 min, followed by 40 cycles of denaturation at 95 °C for 10 s, annealing and extension at 60 °C for 30 s. Melt curve analysis was performed to determine the specificity of reactions. The transcript level was calculated according to the $\Delta\Delta C_t$ method (Livak & Schmittgen, 2001). The eggplant *Actin* gene (Sme2.5_01462.1) was used as internal control. Three biological and technical repetitions were performed during the whole experiment.

Table 1 The WRKY proteins in eggplant.

Protein name	Gene ID	Group	Amino acid	Molecular weight	pI
SmWRKY1	Sme2.5_00009.1_g00017.1	3	340	38.90	5.14
SmWRKY2	Sme2.5_00013.1_g00024.1	1	511	57.35	6.58
SmWRKY3	Sme2.5_00013.1_g00025.1	3	360	40.79	5.70
SmWRKY4	Sme2.5_00016.1_g00020.1/pseudo	2c	338	37.43	5.58
SmWRKY5	Sme2.5_00029.1_g00022.1	2d	324	35.87	9.57
SmWRKY6	Sme2.5_00038.1_g00016.1/TE	2d	367	40.39	9.72
SmWRKY7	Sme2.5_00100.1_g00012.1	1	595	64.89	6.56
SmWRKY8	Sme2.5_00161.1_g00022.1	1	490	54.66	5.71
SmWRKY9	Sme2.5_00196.1_g00004.1	1	989	109.90	6.58
SmWRKY10	Sme2.5_00232.1_g00014.1	2d	239	27.26	5.55
SmWRKY11	Sme2.5_00232.1_g00015.1	2d	285	30.87	5.53
SmWRKY12	Sme2.5_00264.1_g00017.1	2d	306	33.62	9.64
SmWRKY13	Sme2.5_00281.1_g00010.1	2b	454	50.55	5.92
SmWRKY14	Sme2.5_00386.1_g00007.1	2b	561	61.09	6.89
SmWRKY15	Sme2.5_00423.1_g00013.1	2e	277	30.16	5.51
SmWRKY16	Sme2.5_00556.1_g00018.1	2a	224	25.48	6.45
SmWRKY17	Sme2.5_00556.1_g00019.1	2a	261	29.75	5.75
SmWRKY18	Sme2.5_00574.1_g00007.1	2c	171	19.67	5.40
SmWRKY19	Sme2.5_01030.1_g00008.1	1	486	54.38	6.50
SmWRKY20	Sme2.5_01060.1_g00010.1	2d	402	45.04	9.43
SmWRKY21	Sme2.5_01071.1_g00003.1	2e	297	33.64	6.45
SmWRKY22	Sme2.5_01077.1_g00010.1	1	649	71.02	6.46
SmWRKY23	Sme2.5_01130.1_g00003.1	2b	334	37.60	7.01
SmWRKY24	Sme2.5_01183.1_g00010.1	2d	337	36.62	9.55
SmWRKY25	Sme2.5_01372.1_g00013.1/pseudo	2a	353	38.71	8.55
SmWRKY26	Sme2.5_01585.1_g00006.1	1	499	55.49	7.64
SmWRKY27	Sme2.5_01670.1_g00011.1	2e	353	39.38	5.64
SmWRKY28	Sme2.5_01689.1_g00004.1	2e	332	36.60	5.13
SmWRKY29	Sme2.5_02107.1_g00005.1	1	615	66.36	6.12
SmWRKY30	Sme2.5_02381.1_g00007.1	2b	534	58.28	6.44
SmWRKY31	Sme2.5_02389.1_g00002.1	2c	134	15.75	9.64
SmWRKY32	Sme2.5_02587.1_g00015.1	1	529	58.74	7.17
SmWRKY33	Sme2.5_02680.1_g00006.1	1	450	49.73	9.51
SmWRKY34	Sme2.5_02752.1_g00007.1	3	296	33.91	5.94
SmWRKY35	Sme2.5_02954.1_g00006.1	1	389	43.05	7.69
SmWRKY36	Sme2.5_03205.1_g00005.1	2b	434	47.31	6.90
SmWRKY37	Sme2.5_03353.1_g00002.1	2c	288	32.62	6.18
SmWRKY38	Sme2.5_03471.1_g00002.1	2a	182	20.83	9.45
SmWRKY41	Sme2.5_03997.1_g00004.1	2c	406	44.18	5.83
SmWRKY39	Sme2.5_03533.1_g00001.1	2e	299	33.37	5.70

(continued on next page)

Table 1 (continued)

Protein name	Gene ID	Group	Amino acid	Molecular weight	pI
SmWRKY40	Sme2.5_03980.1_g00003.1	2c	319	36.33	6.49
SmWRKY42	Sme2.5_03997.1_g00007.1	2c	448	48.81	8.75
SmWRKY43	Sme2.5_04027.1_g00002.1	3	356	39.06	6.32
SmWRKY44	Sme2.5_04190.1_g00001.1	2a	339	37.64	8.84
SmWRKY45	Sme2.5_04253.1_g00002.1	2c	227	25.60	8.20
SmWRKY46	Sme2.5_04516.1_g00005.1	2c	301	33.88	6.46
SmWRKY47	Sme2.5_04517.1_g00003.1/TE	2c	1046	116.54	6.30
SmWRKY48	Sme2.5_05222.1_g00004.1	1	505	54.91	7.60
SmWRKY49	Sme2.5_06310.1_g00004.1	2a	586	66.70	8.48
SmWRKY50	Sme2.5_06988.1_g00004.1	1	492	55.21	6.65
SmWRKY51	Sme2.5_07339.1_g00001.1	3	341	38.36	7.01
SmWRKY52	Sme2.5_08092.1_g00001.1	2b	505	55.81	6.58
SmWRKY53	Sme2.5_11773.1_g00001.1/partial	3	355	40.35	5.78
SmWRKY54	Sme2.5_14019.1_g00001.1/partial	2c	241	27.65	7.67
SmWRKY55	Sme2.5_14251.1_g00004.1/partial	2c	202	23.01	7.63
SmWRKY56	Sme2.5_15021.1_g00001.1	2d	358	40.55	9.58
SmWRKY57	Sme2.5_17732.1_g00001.1	2b	362	39.30	9.17
SmWRKY58	Sme2.5_18444.1_g00001.1/partial	2c	298	33.79	9.51

RESULTS

Identification of WRKY protein family in eggplant

To identify the WRKY proteins in eggplant, BLASTP search was performed against the eggplant genome database (<http://eggplant.kazusa.or.jp/>) using the conserved WRKY domains in Arabidopsis. About 79 putative WRKY proteins were identified. Meanwhile, 68 putative WRKY proteins were identified using HMM (Hidden Markov Model) search program with a Hidden Markov Model (PF03106). By removing the redundant proteins and proteins without WRKY domain verified by Pfam and SMART programs, a total of 58 WRKY proteins were finally confirmed in eggplant. Obviously, the WRKY family of eggplant was smaller than those of other Solanaceae plants such as tomato (81 members) (Huang *et al.*, 2012a; Huang *et al.*, 2012b), pepper (*Capsicum annuum* L.) (61 members) (Cheng *et al.*, 2016) and potato (82 members) (Liu *et al.*, 2017a; Liu *et al.*, 2017b).

The length of WRKY proteins in eggplant ranged from 134 to 1046 aa, with an average length of approximately 396 aa. The proteins with minimum length and maximum length were SmWRKY31 and SmWRKY47, respectively. Correspondingly, the molecular weights ranged from 15.75 kDa (SmWRKY31) to 116.54 kDa (SmWRKY47). The pIs of 58 SmWRKY proteins ranged from 5.13 to 9.72, among which 34 pIs<7 and 24 pIs>7 (Table 1) (Data S3).

Classification and phylogenetic analysis of SmWRKY proteins

Based on the number and amino acid sequences of the conserved WRKY domains, eggplant WRKY family can be classified into three main groups or seven subgroups, which is consistent with other plants. The group I contained 13 WRKY members which had two

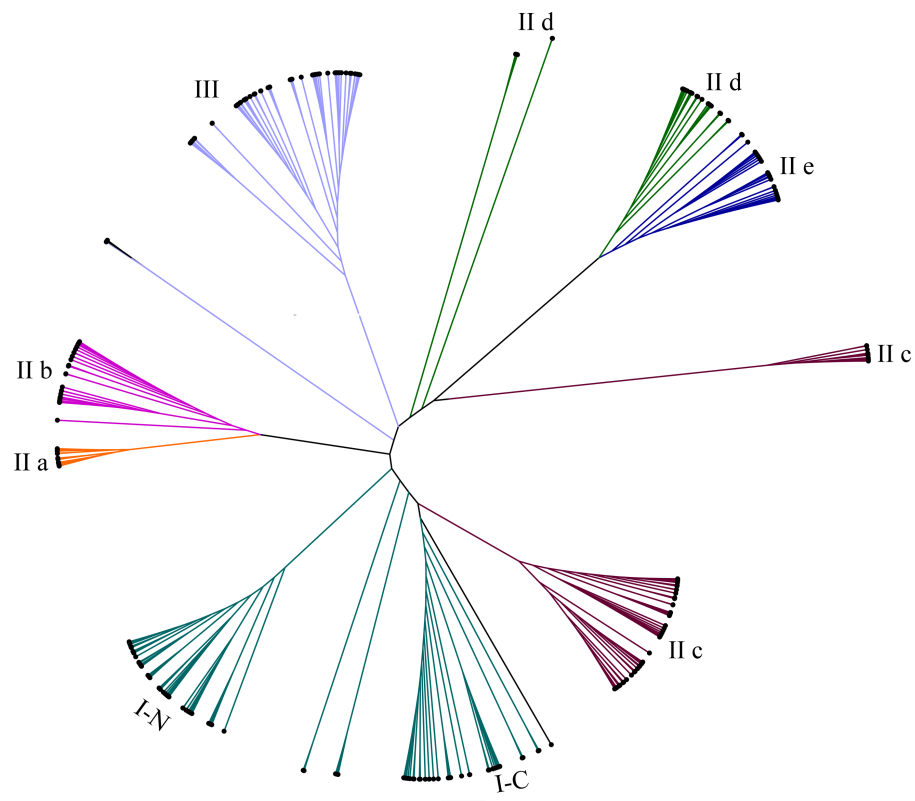


Figure 1 Radial phylogenetic tree of WRKY family in eggplant, tomato, Arabidopsis and rice. The conserved WRKY domain sequences of eggplant, tomato, Arabidopsis and rice were used to construct the phylogenetic tree by MEGA v5.1. The suffix 'N' and 'C' indicated the N-terminal and C-terminal WRKY domain of group I, respectively. The different groups were indicated with colors. The conserved WRKY domain sequences of eggplant, tomato, Arabidopsis and rice were used to construct the phylogenetic tree by MEGA v5.1. All the WRKY proteins were divided into three groups (I, II and III) and five subgroups (II a, II b, II c, II d and II e). The suffix 'N' and 'C' indicated the N-terminal and C-terminal WRKY domain of group I, respectively. The different groups were indicated with colors.

Full-size [DOI: 10.7717/peerj.8777/fig-1](https://doi.org/10.7717/peerj.8777/fig-1)

conserved WRKY domains, while 37 members were classed into group II (6 group II a, 7 group II b, 13 group II c, 8 group II d and 5 group II e). The remaining six WRKY proteins belonged to group III (Table 1).

To study the evolutionary relationships of WRKY proteins between eggplant and other plants, a phylogenetic tree was constructed based on the conserved sequences of WRKY domains from eggplant, tomato, Arabidopsis and rice. All the WRKY proteins were divided into seven subgroups (Fig. 1). Phylogenetic analysis indicated that WRKY proteins in eggplant and tomato were closely related, compared with those in Arabidopsis and rice, such as SIWRKY54 and SmWRKY1, SIWRKY53 and SmWRKY3, SIWRKY31 and SmWRKY26, SIWRKY33 and SmWRKY32, SIWRKY3 and SmWRKY8 and so on (Data S4).

To determine the phylogenetic relationships among the SmWRKY proteins, a phylogenetic tree was also constructed with WRKY conserved sequences using MEGA v5.1. As shown in Fig. 2, most of the SmWRKY members clustered in accordance with the classification, while SmWRKY2, SmWRKY4, SmWRKY10, SmWRKY11, SmWRKY41,

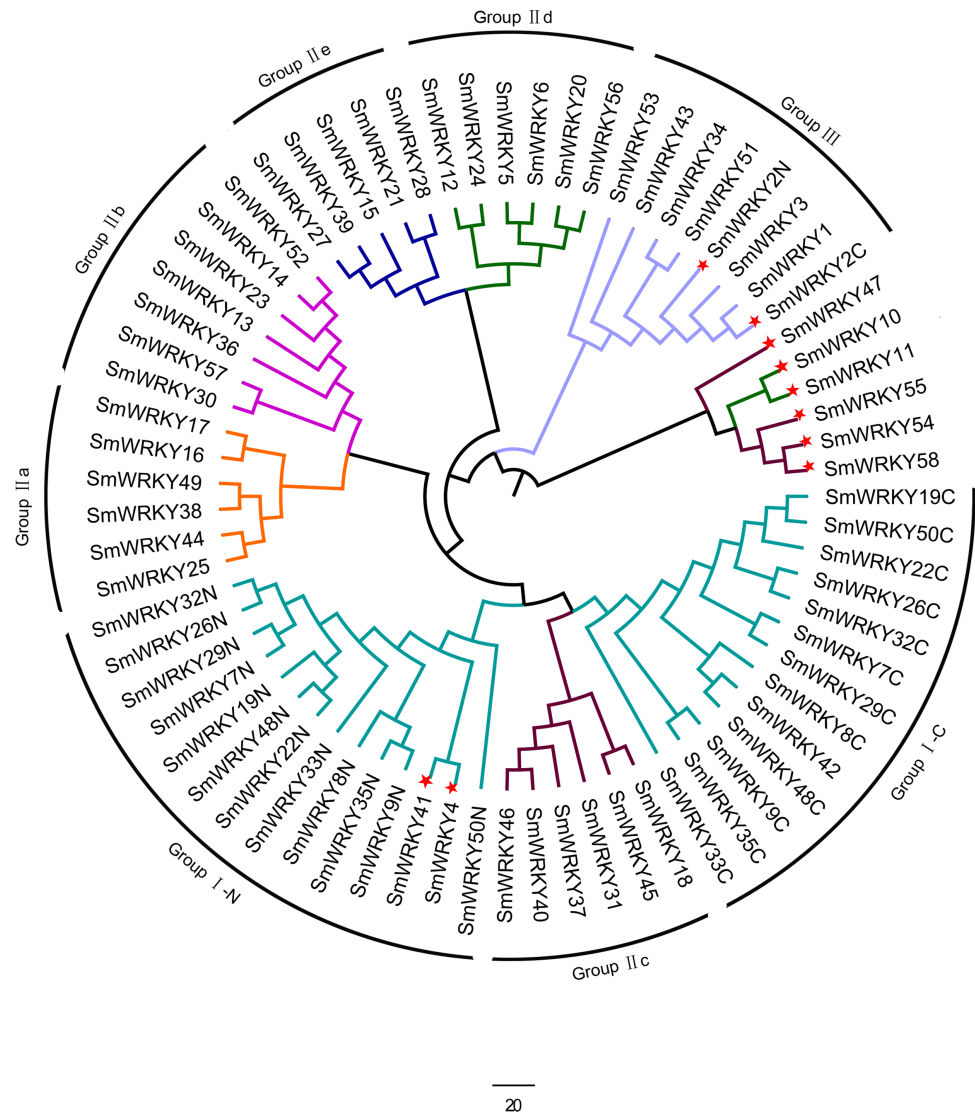


Figure 2 Phylogenetic tree of WRKY family in eggplant. The phylogenetic tree was constructed using the neighbor-joining method in MEGA v5.1 with the conserved WRKY domains of eggplant WRKY proteins. The eggplant WRKY proteins were grouped into three groups (I, II and III) and five subgroups (II a, II b, II c, II d and II e). The suffix 'N' and 'C' indicated the N-terminal and C-terminal WRKY domain of group I, respectively. The WRKY proteins which were not clustered into the groups they belong to were indicated with red stars. The different groups were indicated with colors.

Full-size DOI: 10.7717/peerj.8777/fig-2

SmWRKY42, SmWRKY47, SmWRKY54, SmWRKY55 and SmWRKY58 were not clustered into the corresponding branches.

Structural analysis of WRKY variants

The WRKY domain consists of a WRKY amino acid sequence at the N-terminal and a zinc-finger structure that is either Cx4-5Cx22-23HxH or Cx7Cx23HxC at the C-terminal. Some variants in WRKY domain were reported in the earlier studies. For example, the core sequence of WRKY domain was replaced by WRRY, WSKY, WKRY,


```

SmWRKY2N  GPIDDGYSWIKYGQKCILGAKFPRGYRCTFFKN--CWAKKKIQRDQDPIVFEITYKGYHTC
SmWRKY2C  GPIDGGYSWRKYGEKDILGAEYHRSFYRCYHNMQNCRATKEVQMSDDDDPTAFEIVYKGSHTC
SmWRKY4   TPTRDGYNWRKYGQKQVKSPQGSRSYRCHSE---CFAKKIECSHDNTRVMEI IYRNR-HNH
SmWRKY10  LSETDQWRWRKYGKKPTGGSTFLKSYFRCNEVDD--CPAKRHVQKSSTDPNKVIVTYRNQHNN
SmWRKY11  VAEADQWRWKYEIGHYSTFTGIYYT--CGEVEN--CPAKRLVQKSIRDPNKGIIVTCRQGHNN
SmWRKY41  ASVEDGYNWRKYGQNQVKGSEFFRSYKCAHPN---CFVKKEIARNHKGHVTEVIYNGA-HNH
SmWRKY42  DLLDDGYRWRKYGQKVVKGNPNPRSYNCTNPG---CNVRKHVERAPFKPTSVITTYDGKQNH
SmWRKY54  ELTNDKWAWHKFGQKLLKGFPPFRNYKCSAKL---CEAKKTIEKSPNTENYFLVSYSGEHS
SmWRKY55  ELTNDKWAWDKFGQKLLKGFPPFRNYKCSAKL---CKAKKTIEKSPNTENYFLVSYSGEHS
SmWRKY58  ELTNDKWAWHKFGQKLLKGFPPFRNYKCSAKL---CKAKKTIEKSPNTENYFLVSYSGERSH

```

Figure 3 Identification of WRKY variants in eggplant. The sequences of WRKY variants were aligned. The conserved WRKYGQK and zinc-finger residues were marked in red.

Full-size  DOI: 10.7717/peerj.8777/fig-3

WVKY or WKY (*Eulgem et al., 2000; Xie et al., 2005; Wei et al., 2016*). The amino acids of GQK were substituted by GKK or EIG. Interestingly, WHKF and WDKF were found in eggplant WRKY proteins and GEK replaced GQK following the WRKY sequence (*Fig. 3*). Furthermore, it existed that the sequence of the zinc-finger motif at the C-terminal was Cx23RxH (SmWRKY58) or Cx23QxH (SmWRKY42) in eggplant WRKY proteins (*Fig. 3*). In SmWRKY11 protein, the sequence between the core domain (WRKYGQK) and the first cysteine of zinc-finger was two amino acids less than those normal sequences (*Fig. 3*). SmWRKY42 and SmWRKY58 were lack of the first histidine of conserved zinc-finger (*Fig. 3*). It may result in the failure of zinc-finger formation.

Intron-exon structure and conserved motifs of *SmWRKY* genes

To understand the intron-exon structure of *SmWRKY* genes, we submitted the gff3 file of *SmWRKY* genes to Gene Structure Display Server (<http://gsds.cbi.pku.edu.cn/>) (*Data S1*). As shown in *Fig. 4*, the scope of intron number in eggplant WRKY family was from 0 (*SmWRKY10*) to 11 (*SmWRKY9*), with an average number of 4.4. In rice and cassava, the number of introns varied from 0 to 8 and 1 to 5, respectively (*Xie et al., 2005; Wei et al., 2016*). Group I contained 3-5 introns with the exception of *SmWRKY9* (11 introns). Group II a contained 3-5 introns, except for *SmWRKY38* (2 introns). Group II b contained 2-5 introns. Although several WRKY proteins were not clustered together in group II c, most of WRKYs contained 2 introns. The number of intron in group II d WRKYs was almost 2, excluding *SmWRKY10* (0 intron) and *SmWRKY20* (5 introns). All of the group II e *SmWRKYs* consisted of 2 introns. The majority of group III WRKY genes also included 2 introns.

To further know the structure of eggplant WRKYs and their phylogenetic relationships, conserved motifs were analyzed using MEME tool and annotated with InterPro Scan. As we set, ten motifs were found in the sequences (*Fig. 5*). The first three motifs were annotated as WRKY DNA-binding domain. All the SmWRKY proteins contained two WRKY motifs at least. These results suggested that the features were conserved in the WRKY family identified from eggplant. Notably, almost the members in each group contained the same motifs. However, *Yang et al. (2019)* mentioned that the function of family members largely

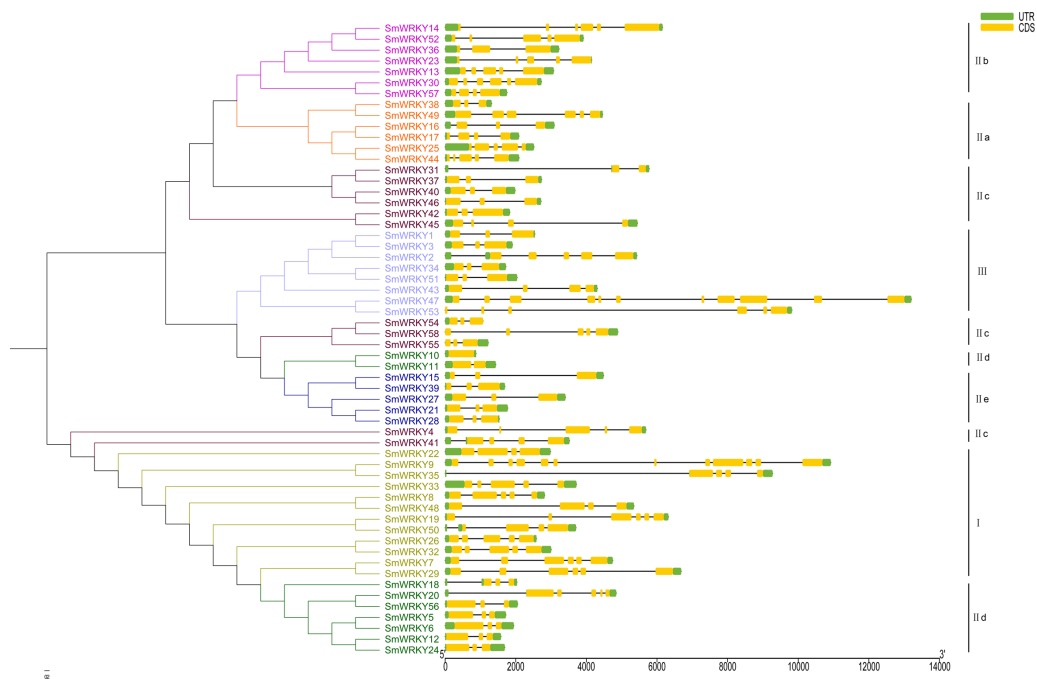


Figure 4 The intron-exon structure of eggplant WRKY genes according to the phylogenetic relationship. The phylogenetic tree was constructed with the full length sequences of eggplant WRKY proteins using MEGA v5.1. The intron-exon structure analysis was performed in Gene Structure Display Server. Lengths of intron and exon of each WRKY gene were showed in proportion. Every group was marked with different colors.

Full-size [DOI: 10.7717/peerj.8777/fig-4](https://doi.org/10.7717/peerj.8777/fig-4)

varied, even if these members were from the same clade. Therefore, these WRKY proteins classified into the same group may differentially function. Although SmWRKY18 belonged to group II c, it had the similar conserved motifs with the group II d.

The differentially expressed *SmWRKYs* in response to cold stress

Eggplant is sensitive to cold stress and often undergoes the cold stress during its growth and development, especially in the early spring (Zhou *et al.*, 2018a; Zhou *et al.*, 2018b). Therefore, it is important to explore the mechanism for cold tolerance and how to improve this tolerance. Previous studies have shown that WRKY transcription factors regulated the plant defense against cold stress (He *et al.*, 2016; Zhang *et al.*, 2016). In order to study the function of WRKY gene family in eggplant response to cold stress, the leaf samples from a cold-tolerant genotype and a cold-sensitive genotype were collected with the three biological replicates when the seedlings were treated for twelve hours. Then the differentially expressed WRKY genes in eggplant cultivars to cold stress were investigated from RNA-seq data which has been not published yet (Data S5). As shown in Fig. 6, twenty *SmWRKY* genes were identified in each cultivar. Interestingly, sixteen WRKY genes were common in both cultivars. Meanwhile, the sixteen WRKY genes showed similar expression pattern in these two cultivars when exposed to cold stress. Only *SmWRKY1* and *SmWRKY8* were blocked in the sensitive cultivar (Fig. 6A). *SmWRKY4*, *SmWRKY7*, *SmWRKY29* and

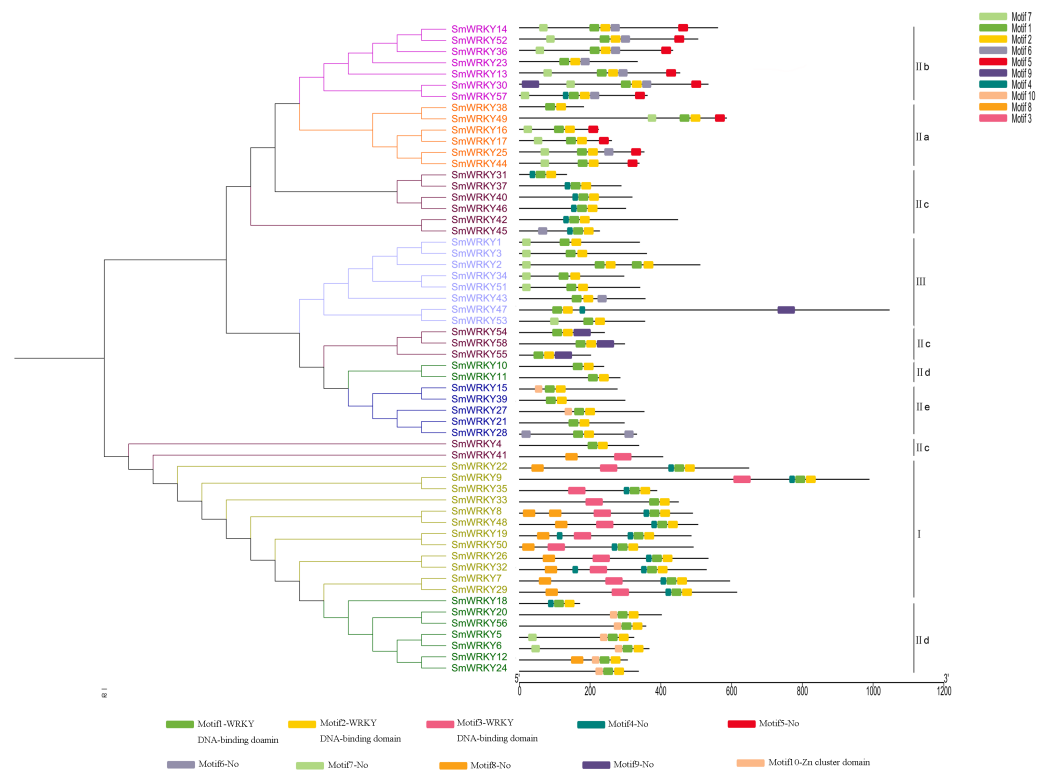


Figure 5 Conserved motifs of eggplant WRKY proteins according to the phylogenetic relationship. The phylogenetic tree was constructed with the full length sequences of eggplant WRKY proteins using MEGA v5.1. The conserved motifs were predicted using the MEME program. The gray line indicated the non-conserved sequences. Each conserved motif was represented by a colored box. The length of each motif was showed in proportion.

Full-size [DOI: 10.7717/peerj.8777/fig-5](https://doi.org/10.7717/peerj.8777/fig-5)

SmWRKY39 were also down-regulated in the tolerant cultivar except these two *WRKY* genes, (Fig. 6B). The transcript level of the rest of *WRKY* genes in both cultivars were enhanced. These results indicated that *WRKY* transcription factors could respond to cold stress and constituted a complicated network to regulate the cold tolerance in eggplant.

Silencing *SmWRKY26* and *SmWRKY32* increased the sensitivity to cold

VIGS was an effective tool to study the gene functions (Zhang *et al.*, 2018; Xu *et al.*, 2019). VIGS mediated by TRV has been successfully employed in the functional analysis of eggplant genes (Zhou *et al.*, 2018a; Zhou *et al.*, 2018b). We conducted a functional validation for *SmWRKY26* and *SmWRKY32* using VIGS. The fragments of *SmWRKY26* and *SmWRKY32* were cloned into the TRV silencing vector. Subsequently, these vectors were introduced into the eggplant. Using the online VIGS tool, we found that the transcript level of *SmWRKY22* was likely affected. To detect the efficiency of silencing, the transcript level of these two *WRKY* genes was determined with qRT-PCR. As shown in Fig. 7A, the transcript level of *SmWRKY26* and *SmWRKY32* in the leaves with target gene silenced displayed a reduction of approximately 80%, compared with the leaves inoculated with the

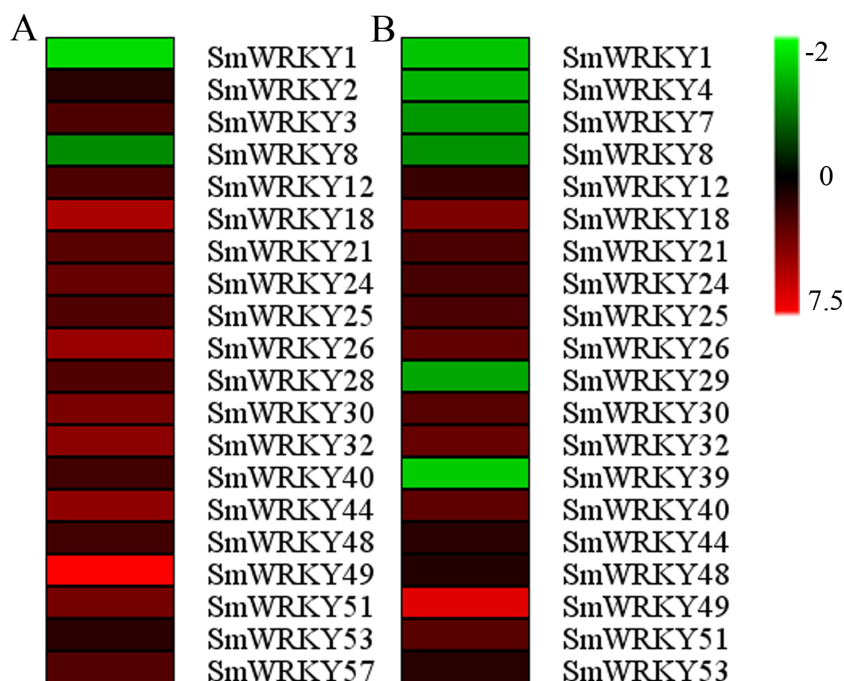


Figure 6 Expression profiles of the differentially expressed eggplant WRKY genes under cold stress. (A) The differentially expressed WRKY genes in sensitive cultivar after 4 °C treatment for 12 h. (B) The differentially expressed WRKY genes in tolerant cultivar after 4 °C treatment for 12 h. The units of the scale was Log Fold change. Green, black and red indicated down-regulated, no change and up-regulated, respectively.

Full-size DOI: [10.7717/peerj.8777/fig-6](https://doi.org/10.7717/peerj.8777/fig-6)

control bacterium. However, the expression of *SmWRKY22* showed no alter in any one kind of the silenced seedlings. The seedlings were transferred into 4 °C for 5 days when the fourth leaf was fully expanded. The gene-silenced seedlings showed more severe wilting and shrink, while the control seedlings presented a little chlorosis (Fig. 7B). Whereafter, the leaf chilling injury index (LCI) was calculated after treatment. The LCI of *SmWRKY26*- and *SmWRKY32*- silenced seedlings were significantly higher than that of control seedlings (Fig. 7C). The phenotypes and index upon cold stress suggested that *SmWRKY26* and *SmWRKY32* positively regulated the tolerance to cold stress in eggplant.

DISCUSSION

Identification of WRKY proteins in eggplant

Characterization of gene families from eggplant genome is more and more important and imperative due to its importance for understanding the roles in plant responses to environmental stresses. In this study, we have identified 58 WRKY genes through searching the sequenced genome (Table 1). The WRKY gene family of eggplant was smaller than those of other plants such as the representative of Solanaceae plant tomato (81 WRKY genes). The WRKY members identified in this study was fewer than that reported in the PlantTFDB website (http://planttfdb.cbi.pku.edu.cn/family.php?sp=Sme&fam=WRKY#family_intro). 65 eggplant WRKY proteins were recorded in the plant transcription factor database.

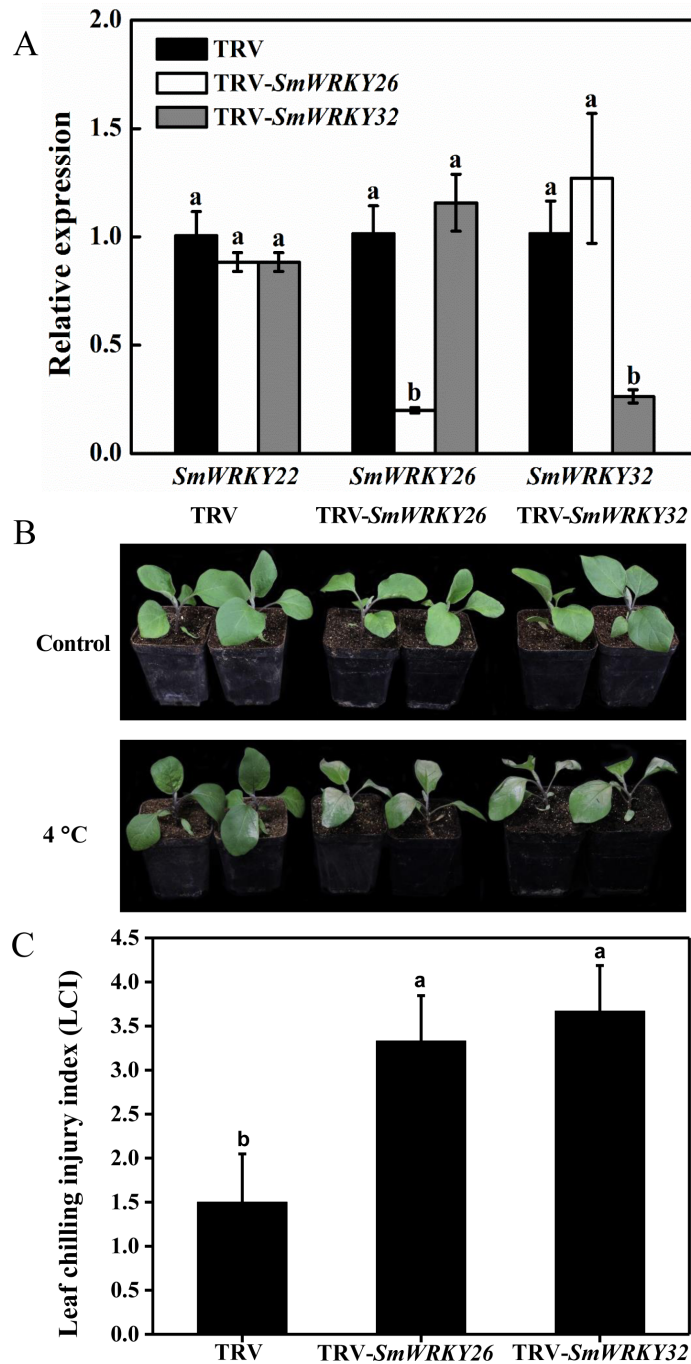


Figure 7 Silencing *SmWRKY26* and *SmWRKY32* enhanced the sensitivity to cold stress in eggplant. (A) The transcript level of *SmWRKY22*, *SmWRKY26* and *SmWRKY32* tested by qRT-PCR. The black, white and shaded columns represent the empty TRV control plants, *SmWRKY26*-silenced plants and *SmWRKY32*-silenced plants, respectively. Data were means \pm SE calculated from three biological replicates. Values with the same letter were not significantly different according to Duncan's multiple range tests ($P < 0.05$, $n = 3$). (B) The phenotypes of silenced plants after cold stress for five days followed by three days of recovery at 28 °C. (C) The leaf chilling injury index of VIGS-plants after cold stress. Values with the same letter were not significantly different according to Duncan's multiple range tests ($P < 0.05$, $n = 6$). The inoculations were conducted for three independent times.

Full-size DOI: 10.7717/peerj.8777/fig-7

However, nine proteins either contained no WRKY feature structures, or had incomplete WRKY domains. Moreover, another two WRKY proteins were found in our study. 74 hits were obtained when “WRKY” was set as the keyword in eggplant genome. Among these, 55 hits were consistent with the WRKY proteins in our study. It lacked three WRKY proteins (Sme2.5_06310.1_g00004.1, Sme2.5_04517.1_g00003.1 and Sme2.5_00196.1_g00004.1) which were found in our study. The rest 19 predicted proteins were misannotated and listed in [Data S6](#).

Interestingly, it was larger than that reported in Yang’s study (50 *SmWRKY* genes) ([Yang et al., 2015](#)), which might be due to that Yang identified the *WRKY* genes from transcriptome data.

Phylogenetic tree and variant analysis of eggplant WRKY

The phylogenetic tree among the eggplant WRKY proteins has shown their relatively conserved evolutionary relationships ([Fig. 2](#)). As shown in [Fig. 2](#), some WRKY proteins were not clustered into the corresponding branches. These WRKY proteins were identified as WRKY variants through analyzing the amino acid sequence of these proteins ([Fig. 3](#)). For example, the C-terminal WRKY domain of WRKY2 protein had the sequence similarity with group III WRKY proteins and the last amino acid in the zinc-finger of the N-terminal WRKY domain is cysteine. These results suggested that the substitutions, addition and subtraction of amino acids of WRKY domain might be responsible for the changes in clustering. Furthermore, these WRKY variants probably lose the DNA-binding activity and the zinc-finger motif can not be formed, which lead to new molecular activities, novel biology functions and a non-functional protein. We found this phenomenon in our earlier study performed in soybean ([Yang et al., 2017a](#); [Yang et al., 2017b](#)). The phylogenetic relationship between eggplant and other plants confirmed that WRKY proteins in eggplant contained the same subgroups with other reported plants ([Data S4](#)). In addition, eggplant WRKY proteins had a highly close relationship to tomato WRKY proteins, on account of being the Solanaceae.

Intron-exon structure and conserved motifs in eggplant WRKY

Analysis of the distribution of intron and exon is a better way to understand the phylogenetic relationship, because intron-exon structural diversity is an important part in the evolution of gene families ([Wei et al., 2016](#)). The *WRKY* genes in group I, group II a and group II b have more introns, whereas a vast majority of the rest *WRKY* genes have only two introns. It seems that eggplant WRKY proteins originate from the first group WRKY. The conserved motifs of eggplant WRKY proteins were identified using MEME tool and InterPro Scan. All the eggplant WRKY proteins contained at least two WRKY motifs with the exception of SmWRKY41. Unlike SmWRKY4, another WRKY variant in which the Cx22HxH replaced for Cx23HxH, the core sequence of the WRKY domain in SmWRKY41 was replaced by WRKYGQN. This specific variation was potentially responsible for one WRKY motif in SmWRKY41. Motif 10 was mainly included in group II d proteins except SmWRKY10 and SmWRKY11 ([Fig. 5](#)). Using InterPro Scan, motif 10 was identified as Zn-cluster domain (IPR018872) which was found associated with the WRKY domain ([Babu et al.,](#)

2006). The types of conserved motifs contained in SmWRKY10 and SmWRKY11 more closely resembled those of group II e proteins, which might be one of the reasons for their clustering (Fig. 5).

SmWRKY genes in response to cold stress

Cold stress is an important factor affecting the growth and development of eggplant. To a certain extent, the response of WRKY genes to cold stress reflects the roles of WRKY genes in cold tolerance of plants (He et al., 2016). For example, Zhou et al. (2008) found that *GmWRKY21* was induced by cold treatment and the transgenic plants over-expressing *GmWRKY21* exhibited enhanced tolerance. In this study, we identified 24 differentially expressed *SmWRKY* genes in the two investigated materials from the RNA-seq data (Fig. 6). Four eggplant WRKY genes were specially differentially expressed in any one cultivar. This indicated that the differentially expression of eight WRKY genes might lead to difference in cold tolerance. In the common sixteen genes, WRKY26 and WRKY32 which shared a high sequence-similarity displayed up-regulated under cold stress. We conducted a VIGS experiment to verify the function of these two genes in response to cold. The different phenotypes and the chilling injury index between the silenced and the control plants illuminated that *SmWRKY26* and *SmWRKY32* could positively regulate the response to cold stress (Fig. 7).

Zhou et al. (2016) identified that several genes in response against *Verticillium dahlia* were annotated as WRKY genes, such as *Unigene21521*, *Unigene11753*, *Unigene6502* and *Unigene20920*. *SmWRKY26* and *SmWRKY32* were the orthologous of *Unigene20920* and *Unigene6502* in cultivated eggplant, respectively. In addition, the proteins encoded by WRKY26 and WRKY32 had a 93% and 85% degree of similarity with *SlWRKY31* and *SlWRKY33* in tomato, respectively. *SlWRKY31* and *SlWRKY33* were reported as *SlWRKY33A* and *SlWRKY33B* to function in disease resistance and heat tolerance in tomato (Zhou et al., 2015). These results implied that orthologous could perform variant functions in different plants.

CONCLUSIONS

WRKY proteins play a vital role in response to different stresses, plant growth and development. In order to understand the WRKY proteins family in eggplant, a genome-wide identification of WRKY proteins was performed in this study. 58 genes encoding eggplant WRKY proteins were identified through searching the eggplant genome, which could be classified into three groups or seven subgroups in accordance with other plants. WRKY variants were identified in eggplant. Gene structure analysis showed that the number of intron in eggplant WRKY family was from 0 to 11, with an average number of 4.4. Based on conserved motif analysis, the WRKY DNA-binding domain was found conserved in eggplant WRKY proteins. Furthermore, RNA-seq data showed that WRKY genes were differentially expressed in eggplant response to cold stress. Structurally related *SmWRKY26* and *SmWRKY32* were confirmed to positively regulate the response to cold stress in eggplant. Therefore, the two preliminarily verified genes can be used as target genes for genetic improvement in cold stress. This study provides a foundation and practical

reference for the functional analysis of the *WRKY* gene family in eggplant and the genetic improvement in cold-tolerance.

ADDITIONAL INFORMATION AND DECLARATIONS

Funding

This work was supported by the National Natural Science Foundation of China (No. 31701932) and the Natural Science Foundation of Jiangsu Province (BK20181241). The funders had no role in study design, data collection and analysis, decision to publish, or preparation of the manuscript.

Grant Disclosures

The following grant information was disclosed by the authors:

National Natural Science Foundation of China: 31701932.

Natural Science Foundation of Jiangsu Province: BK20181241.

Competing Interests

The authors declare there are no competing interests.

Author Contributions

- Yan Yang conceived and designed the experiments, performed the experiments, analyzed the data, prepared figures and/or tables, authored or reviewed drafts of the paper, and approved the final draft.
- Jun Liu performed the experiments, authored or reviewed drafts of the paper, and approved the final draft.
- Xiaohui Zhou analyzed the data, authored or reviewed drafts of the paper, and approved the final draft.
- Songyu Liu analyzed the data, prepared figures and/or tables, and approved the final draft.
- Yong Zhuang conceived and designed the experiments, authored or reviewed drafts of the paper, and approved the final draft.

Data Availability

The following information was supplied regarding data availability:

The RNA-seq data is available at NCBI Genbank: [PRJNA572318](https://www.ncbi.nlm.nih.gov/PRJNA572318). Sequences are available in [Data S3](#).

Supplemental Information

Supplemental information for this article can be found online at <http://dx.doi.org/10.7717/peerj.8777#supplemental-information>.

REFERENCES

Ay N, Irmeler K, Fischer A, Uhlemann R, Reuter G, Humbeck K. 2009. Epigenetic programming via histone methylation at *WRKY53* controls leaf senescence in

- Arabidopsis thaliana*. *Plant Journal* **58**:333–346
DOI [10.1111/j.0960-7412.2009.03782.x](https://doi.org/10.1111/j.0960-7412.2009.03782.x).
- Babu MM, Iyer LM, Balaji S, Aravind L. 2006.** The natural history of the WRKY–GCM1 zinc fingers and the relationship between transcription factors and transposons. *Nucleic Acids Research* **34**:6505–6520 DOI [10.1093/nar/gkl888](https://doi.org/10.1093/nar/gkl888).
- Brusslan JA, Alvarez-Canterbury AMR, Nair NU, Rice JC, Hitchler MJ. 2012.** Genome-wide evaluation of histone methylation changes associated with leaf senescence in *Arabidopsis*. *PLOS ONE* **7**:e33151 DOI [10.1371/journal.pone.0033151](https://doi.org/10.1371/journal.pone.0033151).
- Cai RH, Dai W, Zhang CS, Wang Y, Wu M, Zhao Y, Ma Q, Xiang Y, Cheng BJ. 2017.** The maize WRKY transcription factor ZmWRKY17 negatively regulates salt stress tolerance in transgenic *Arabidopsis* plants. *Planta* **246**:1215–1231 DOI [10.1007/s00425-017-2766-9](https://doi.org/10.1007/s00425-017-2766-9).
- Cheng Y, JalalAhmed G, Yu JH, Yao ZP, Ruan MY, Ye QJ, Li ZM, Wang RQ, Feng K, Zhou GZ, Yang YJ, Diao WP, Wan HJ. 2016.** Putative WRKYs associated with regulation of fruit ripening revealed by detailed expression analysis of the WRKY gene family in pepper. *Scientific Reports* **6**:3900.
- Daunay MC, Lester RN. 1988.** The usefulness of taxonomy for Solanaceae breeders, with special reference to the genus *Solanum* and to *Solanum melongena* L. (eggplant). *Capsicum Newsllett* **7**:70–79.
- Dong JX, Chen CH, Chen ZX. 2003.** Expression profiles of the *Arabidopsis* WRKY gene superfamily during plant defense response. *Plant Molecular Biology* **51**:21–37 DOI [10.1023/A:1020780022549](https://doi.org/10.1023/A:1020780022549).
- Eulgem T, Rushton PJ, Robatzek S, Somssich IE. 2000.** The WRKY superfamily of plant transcription factors. *Trends in Plant Science* **5**:199–206 DOI [10.1016/S1360-1385\(00\)01600-9](https://doi.org/10.1016/S1360-1385(00)01600-9).
- Fu D, Zhu B, Zhu H, Jiang W, Luo Y. 2005.** Virus-induced gene silencing in tomato fruit. *Plant Journal* **43**:299–308 DOI [10.1111/j.1365-313X.2005.02441.x](https://doi.org/10.1111/j.1365-313X.2005.02441.x).
- Gottardini E, Cristofori A, Pellegrini E, La Porta N, Nali C, Baldi P, Sablok G. 2016.** Suppression subtractive hybridization and NGS reveal differential transcriptome expression profiles in wayfaring tree (*Viburnum lantana* L.) treated with ozone. *Frontiers in Plant Science* **7**:Article 713.
- Gu YZ, Li W, Jiang HW, Wang Y, Gao HH, Liu M, Chen QS, Lai YC, He CY. 2017.** Differential expression of a WRKY gene between wild and cultivated soybeans correlates to seed size. *Journal of Experimental Botany* **68**:2717–2729 DOI [10.1093/jxb/erx147](https://doi.org/10.1093/jxb/erx147).
- Hall BG. 2013.** Building phylogenetic trees from molecular data with MEGA. *Molecular Biology and Evolution* **30**:1229–1235 DOI [10.1093/molbev/mst012](https://doi.org/10.1093/molbev/mst012).
- He YJ, Mao SS, Gao YL, Zhu LY, Wu DM, Cui YX, Li JN, Qian W. 2016.** Genome-wide identification and expression analysis of WRKY transcription factors under multiple stresses in *Brassica napus*. *PLOS ONE* **11**(6):e0157558 DOI [10.1371/journal.pone.0157558](https://doi.org/10.1371/journal.pone.0157558).
- Hirakawa H, Shirasawa K, Miyatake K, Nunome T, Negor S, Ohyama A, Yamaguchi H, Sato S, Isobe S, Tabata S, Fukuoka H. 2014.** Draft genome sequence of eggplant

- (*Solanum melongena* L.): the representative *Solanum* species indigenous to the old world. *DNA Research* 21:649–660 DOI 10.1093/dnares/dsu027.
- Hu B, Jin JP, Guo AY, Zhang H, Luo JC, Gao G. 2015.** GSDS 2.0: an upgraded gene feature visualization server. *Bioinformatics* 31:1296–1297 DOI 10.1093/bioinformatics/btu817.
- Hu L, Wu Y, Wu D, Rao WW, Guo JP, Ma YH, Wang ZZ, Shangguan XX, Wang HY, Xu CX, Huang J, Shi S, Chen RZ, Du B, Zhu LL, He GC. 2018.** The coiled-coil and nucleotide binding domains of BROWN PLANTHOPPER RESISTANCE14 function in signaling and resistance against planthopper in rice. *The Plant Cell* 29:3157–3185.
- Huang SX, Gao YF, Liu JK, Peng XL, Niu XL, Fei ZJ, Cao SQ, Liu YS. 2012b.** Genome-wide analysis of WRKY transcription factors in *Solanum lycopersicum*. *Molecular Genetics and Genomics* 287:495–513 DOI 10.1007/s00438-012-0696-6.
- Huang C, Qian Y, Li Z, Zhou X. 2012a.** Virus-induced gene silencing and its application in plant functional genomics. *Science China Life Science* 55:99–108 DOI 10.1007/s11427-012-4280-4.
- Ishiguro S, Nakamura K. 1994.** Characterization of a cDNA-encoding a novel DNA-binding protein, SPF1, that recognizes SP8 sequences in the 5' upstream regions of genes-coding for sporamin and beta-amylase from sweet-potato. *Molecular and General Genetics* 244:563–571 DOI 10.1007/BF00282746.
- Jin WH, Zhou Q, Wei YF, Yang JM, Hao FS, Cheng ZP, Guo HX, Liu WQ. 2018.** NtWRKY-R1, a novel transcription factor, integrates IAA and JA signal pathway under topping damage stress in *Nicotiana tabacum*. *Frontiers in Plant Science* 8:Article 2263 DOI 10.3389/fpls.2017.02263.
- Koressaar T, Remm M. 2007.** Enhancements and modifications of primer design program Primer3. *Bioinformatics* 23:1289–1291 DOI 10.1093/bioinformatics/btm091.
- Kumari M, Wankhede DP, Verma M, Verma P. 2017.** Genome wide identification of calcium dependent protein kinase and related kinase gene families in *Solanum melongena* L. *Indian Journal of Horticulture* 74:526–532 DOI 10.5958/0974-0112.2017.00102.5.
- Lei R, Li X, Ma Z, Lv Y, Hu Y. 2017.** Arabidopsis WRKY2 and WRKY34 transcription factors interact with VQ20 protein to modulate pollen development and function. *Plant Journal* 91:962–976 DOI 10.1111/tbj.13619.
- Li J, Jiang MM, Ren L, Liu Y, Chen HY. 2016.** Identification and characterization of CBL and CIPK gene families in eggplant (*Solanum melongena* L.). *Molecular Genetics and Genomics* 291:1769–1781 DOI 10.1007/s00438-016-1218-8.
- Liu QP, Liu Y, Tang YM, Chen JN, Ding W. 2017b.** Overexpression of NtWRKY50 increases resistance to *Ralstonia solanacearum* and alters salicylic acid and jasmonic acid production in tobacco. *Frontiers in Plant Science* 8:Article 1710 DOI 10.3389/fpls.2017.01710.
- Liu QN, Liu Y, Xin ZZ, Zhang DZ, Ge BM, Yang RP, Wang ZF, Yang L, Tang BP, Zhou CL. 2017a.** Genome-wide identification and characterization of the WRKY gene family in potato (*Solanum tuberosum*). *Biochemical Systematics and Ecology* 71:212–218 DOI 10.1016/j.bse.2017.02.010.

- Livak KJ, Schmittgen TD. 2001. Analysis of relative gene expression data using real-time quantitative PCR and the $2^{-\Delta\Delta CT}$ method. *Methods* 25:402–408 DOI 10.1006/meth.2001.1262.
- Luo M, Dennis ES, Berger F, Peacock WJ, Chaudhury A. 2005. *MINISEED3* (*MINI3*), a WRKY family gene, and *HAIKU2* (*IKU2*), a leucine-rich repeat (LRR) KINASE gene, are regulators of seed size in Arabidopsis. *Proceedings of the National Academy of Science in the United States of America* 102:17531–17536 DOI 10.1073/pnas.0508418102.
- Ren XZ, Chen ZH, Liu Y, Zhang HR, Zhang M, Liu Q, Hong XH, Zhu JK, Gong ZZ. 2010. ABO3, a WRKY transcription factor, mediates plant responses to abscisic acid and drought tolerance in Arabidopsis. *Plant Journal* 63:417–429 DOI 10.1111/j.1365-3113.2010.04248.x.
- Rinerson CI, Rabara RC, Tripathi P, Shen QJ, Rushton PJ. 2015. The evolution of WRKY transcription factors. *BMC Plant Biology* 15:66 DOI 10.1186/s12870-015-0456-y.
- Ross CA, Liu Y, She QJ. 2007. The WRKY gene family in rice (*Oryza sativa*). *Journal of Integrative Plant Biology* 49:827–842 DOI 10.1111/j.1744-7909.2007.00504.x.
- Rushton PJ, Somssich IE, Ringler P, Shen QJ. 2010. WRKY transcription factors. *Trends in Plant Science* 15:247–258 DOI 10.1016/j.tplants.2010.02.006.
- Tamura K, Peterson D, Peterson N, Stecher G, Nei M, Kumar S. 2011. MEGA5: molecular evolutionary genetics analysis using maximum likelihood, evolutionary distance, and maximum parsimony methods. *Molecular Biology and Evolution* 28:2731–2739 DOI 10.1093/molbev/msr121.
- Thompson JD, Higgins DG, Gibson TJ. 1994. CLUSTAL W: improving the sensitivity of progressive multiple sequence alignment through sequence weighting, position-specific gap penalties and weight matrix choice. *Nucleic Acids Research* 22:4673–4680 DOI 10.1093/nar/22.22.4673.
- Verweij W, Spelt CE, Blik M, De VM, Wit N. 2016. Functionally similar WRKY proteins regulate vacuolar acidification in petunia and hair development in Arabidopsis. *Plant Cell* 28:786–803 DOI 10.1105/tpc.15.00608.
- Wang SJ, Chen Z, Ji T, Di QH, Li LJ, Wang XF, Wei M, Shi QH, Li Y, Gong B, Yang FJ. 2016. Genome-wide identification and characterization of the R2R3MYB transcription factor superfamily in eggplant (*Solanum melongena* L.). *Agri Gene* 2:38–52 DOI 10.1016/j.aggene.2016.09.006.
- Wang CC, Sulli M, Fu DQ. 2017. The role of phytochromes in regulating biosynthesis of sterol glycoalkaloid in eggplant leaves. *PLOS ONE* 12:e0189481 DOI 10.1371/journal.pone.0189481.
- Wei YX, Shi HT, Xia ZQ, Tie WW, Ding ZH, Yan Y, Wang WQ, Hu W, Li KM. 2016. Genome-wide identification and expression analysis of the WRKY gene family in cassava. *Frontiers in Plant Science* 7:Article 25.
- Wu XL, Shiroto Y, Kishitani S, Ito Y, Toriyama K. 2009. Enhanced heat and drought tolerance in transgenic rice seedlings overexpressing *OsWRKY11* under the control of

- HSP101* promoter. *Plant Cell and Reports* **28**:21–30
DOI [10.1007/s00299-008-0614-x](https://doi.org/10.1007/s00299-008-0614-x).
- Xie Z, Zhang ZL, Zou XL, Huang J, Ruas P, Thompson D, Shen QJ. 2005.** Annotations and functional analyses of the rice *WRKY* gene superfamily reveal positive and negative regulators of abscisic acid signaling in aleurone cells. *Plant Physiology* **137**:176–189 DOI [10.1104/pp.104.054312](https://doi.org/10.1104/pp.104.054312).
- Xu ZL, Ali Z, Yi J, Xu L, Liu XQ, He X, Huang YH, Karim I, Rasul M, Ma HX, Zhang DY. 2014.** Over-expression of *GmWRKY111* enhances NaCl tolerance of salt-sensitive genotype of *Glycine max*. *International Journal of Agriculture and Biology* **16**:153–159.
- Xu XP, Chen CH, Fan BF, Chen ZX. 2006.** Physical and functional interactions between pathogen-induced Arabidopsis *WRKY18*, *WRKY40*, and *WRKY60* transcription factors. *The Plant Cell* **18**:1310–1326 DOI [10.1105/tpc.105.037523](https://doi.org/10.1105/tpc.105.037523).
- Xu H, Xu L, Yang P, Cao Y, Tang Y, He G, Yuan S, Lei J, Ming J. 2019.** Virus-induced *Phytoene Desaturase (PDS)* gene silencing using tobacco rattle virus in *Lilium × formolongi*. *Horticultural Plant Journal* **5**:31–38 DOI [10.1016/j.hpj.2018.10.002](https://doi.org/10.1016/j.hpj.2018.10.002).
- Yang Y, Chi YJ, Wang Z, Zhou Y, Fan BF, Chen ZX. 2016.** Functional analysis of structurally related soybean *GmWRKY58* and *GmWRKY76* in plant growth and development. *Journal of Experimental Botany* **67**:4727–4742 DOI [10.1093/jxb/erw252](https://doi.org/10.1093/jxb/erw252).
- Yang X, Deng C, Zhang Y, Cheng YF, Huo QY, Xue LB. 2015.** The *WRKY* transcription factor genes in eggplant (*Solanum melongena* L.) and turkey berry (*Solanum torvum* Sw.). *International Journal of Molecular Sciences* **16**:7608–7626 DOI [10.3390/ijms16047608](https://doi.org/10.3390/ijms16047608).
- Yang K, Li Y, Wang S, Xu X, Sun H, Zhao H, Li X, Gao Z. 2019.** Genome-wide identification and expression analysis of the *MYB* transcription factor in moso bamboo (*Phyllostachys edulis*). *PeerJ* **6**:e6242 DOI [10.7717/peerj.6242](https://doi.org/10.7717/peerj.6242).
- Yang X, Liu F, Zhang Y, Wang L, Cheng YF. 2017b.** Cold-responsive miRNAs and their target genes in the wild eggplant species *Solanum aculeatissimum*. *BMC Genomics* **18**:1000 DOI [10.1186/s12864-017-4341-y](https://doi.org/10.1186/s12864-017-4341-y).
- Yang Y, Zhou Y, Chi YJ, Fan BF, Chen ZX. 2017a.** Characterization of soybean *WRKY* gene family and identification of soybean *WRKY* genes that promote resistance to soybean cyst nematode. *Scientific Reports* **7**:17804 DOI [10.1038/s41598-017-18235-8](https://doi.org/10.1038/s41598-017-18235-8).
- Yu DQ, Chen CH, Chen ZX. 2001.** Evidence for an important role of *WRKY* DNA binding proteins in the regulation of *NPR1* gene expression. *Plant Cell* **13**:1527–1539 DOI [10.1105/TPC.010115](https://doi.org/10.1105/TPC.010115).
- Zhang J, Wang F, Zhang C, Zhang J, Chen Y, Liu G, Zhao Y, Hao F, Zhang J. 2018.** A novel VIGS method by agroinoculation of cotton seeds and application for elucidating functions of *GhBI-1* in salt-stress response. *Plant Cell and Reports* **37**:1091–1100 DOI [10.1007/s00299-018-2294-5](https://doi.org/10.1007/s00299-018-2294-5).
- Zhang L, Xu B, Wu T, Wen XM, Fan LX, Feng ZZ, Paoletti E. 2017.** Transcriptomic analysis of Pak Choi under acute ozone exposure revealed regulatory mechanism against ozone stress. *BMC Plant Biology* **17**:236 DOI [10.1186/s12870-017-1202-4](https://doi.org/10.1186/s12870-017-1202-4).

- Zhang Y, Yu HJ, Yang XY, Li Q, Ling J, Wang H, Gu XF, Huang SW, Jiang WJ. 2016.** CsWRKY46, a WRKY transcription factor from cucumber, confers cold resistance in transgenic-plant by regulating a set of cold-stress responsive genes in an ABA-dependent manner. *Plant Physiology and Biochemistry* **108**:478–487 DOI [10.1016/j.plaphy.2016.08.013](https://doi.org/10.1016/j.plaphy.2016.08.013).
- Zheng XD, Zhao Y, Shan DQ, Shi K, Wang L, Li QT, Wang N, Zhou JZ, Yao JZ, Xue Y, Fang S, Chu JF, Guo Y, Kong J. 2018.** MdWRKY9 overexpression confers intensive dwarfing in the M26 rootstock of apple by directly inhibiting brassinosteroid synthetase MdDWF4 expression. *New Phytologist* **217**:1086–1098 DOI [10.1111/nph.14891](https://doi.org/10.1111/nph.14891).
- Zhou XH, Bao SY, Liu J, Zhuang Y. 2016.** De novo sequencing and analysis of the transcriptome of the wild eggplant species *Solanum Aculeatissimum* in response to *Verticillium dahliae*. *Plant Molecular Biology Reporter* **34**:1193–1203 DOI [10.1007/s11105-016-0998-7](https://doi.org/10.1007/s11105-016-0998-7).
- Zhou L, Li J, He YJ, Liu Y, Chen HY. 2018a.** Functional characterization of *SmCBF* genes involved in abiotic stress response in eggplant (*Solanum melongena*). *Scientia Horticulturae* **233**:14–21 DOI [10.1016/j.scienta.2018.01.043](https://doi.org/10.1016/j.scienta.2018.01.043).
- Zhou XH, Liu J, Bao SY, Yang Y, Zhuang Y. 2018b.** Molecular Cloning and Characterization of a wild eggplant *Solanum aculeatissimum* NBS-LRR Gene, involved in plant resistance to *Meloidogyne incognita*. *International Journal of Molecular Sciences* **19**:Article 583 DOI [10.3390/ijms19020583](https://doi.org/10.3390/ijms19020583).
- Zhou QY, Tian AG, Zou HF, Xie ZM, Lei G, Huang J, Wang CM, Wang HW, Zhang JS, Chen SY. 2008.** Soybean WRKY-type transcription factor genes, *GmWRKY13*, *GmWRKY21*, and *GmWRKY54*, confer differential tolerance to abiotic stresses in transgenic Arabidopsis plants. *Plant Biotechnology Journal* **6**:486–503 DOI [10.1111/j.1467-7652.2008.00336.x](https://doi.org/10.1111/j.1467-7652.2008.00336.x).
- Zhou J, Wang J, Zheng ZY, Fan BF, Yu JQ, Chen ZX. 2015.** Characterization of the promoter and extended C-terminal domain of Arabidopsis WRKY33 and functional analysis of tomato WRKY33 homologues in plant stress responses. *Journal of Experimental Botany* **66**:4567–4583 DOI [10.1093/jxb/erv221](https://doi.org/10.1093/jxb/erv221).