

ORIGINAL RESEARCH

CD68+ cell count, early evaluation with PET and plasma TARC levels predict response in Hodgkin lymphoma

Annarosa Cuccaro¹, Salvatore Annunziata², Elisa Cupelli¹, Maurizio Martini³, Maria L. Calcagni², Vittoria Rufini², Manuela Giachelia¹, Francesca Bartolomei¹, Eugenio Galli¹, Francesco D'Alò¹, Maria T. Voso^{1,*}, Giuseppe Leone¹, Alessandro Giordano², Luigi M. Larocca³ & Stefan Hohaus¹

¹Institute of Hematology, Catholic University of the Sacred Heart, Rome, Italy

²Institute of Nuclear Medicine, Catholic University of the Sacred Heart, Rome, Italy

³Institute of Pathology, Catholic University of the Sacred Heart, Rome, Italy

Keywords

CD68+ tumor-infiltrating macrophages, Hodgkin lymphoma, interim PET, prognosis, TARC

Correspondence

Stefan Hohaus, Institute of Hematology, Catholic University of the Sacred Heart, L.go A. Gemelli, 1, 00168 Rome, Italy.
Tel: -39-06-30154180; Fax:-39-06-35503777;
E-mail: stefan.hohaus@rm.unicatt.it

Present address

Maria T. Voso, Department of Biomedicine and Prevention, Università Tor Vergata, Rome, Italy

Funding Information

This work was supported by grants from AIRC (Associazione Italiana per la Ricerca sul Cancro), MURST (Ministero dell'Università e della Ricerca Scientifica e Tecnologica), and Fondi d'Ateneo, Linea D1, Università Cattolica del Sacro Cuore. M. G. was supported by Fondazione Roma - Progetto Cellule Staminali.

Received: 9 July 2015; Revised: 16 October 2015; Accepted: 19 October 2015

Cancer Medicine 2016; 5(3):398–406

doi: 10.1002/cam4.585

Introduction

The great majority of patients with Hodgkin lymphoma (HL) can be cured with chemotherapy or a combination of chemo and radiotherapy. There is, however, a proportion of patients, in particular those presenting with advanced stage disease, who will succumb to the disease [1]. Balancing the aggressiveness of treatment between disease control

Abstract

Early response evaluation with [¹⁸F]fluorodeoxyglucose (FDG) positron emission tomography after 2 cycles of chemotherapy (interim PET) has been indicated as the strongest predictor for outcome in classical Hodgkin lymphoma (HL). We studied the prognostic role of the number of tumor-infiltrating CD68+ cells and of the plasma levels of TARC (thymus and activation-regulated chemokine) in the context of interim PET in 102 patients with classical HL treated with Adriamycin, Bleomycin, Vinblastine, Dacarbazine (ABVD). After 2 ABVD cycles, interim PET according to Deauville criteria was negative (score 0–3) in 85 patients and positive (score 4–5) in 15 patients (2 patients technically not evaluable). TARC levels were elevated in 89% of patients at diagnosis, and decreased after 2 cycles in 82% of patients. Persistently elevated TARC levels in 18% of patients were significantly associated with a positive PET result ($P = 0.007$). Strong predictors for progression-free survival (PFS) were a negative interim PET (85% vs. 28%, $P < 0.0001$) and CD68+ cell counts $<5\%$ (89% vs. 67%, $P = 0.006$), while TARC levels at diagnosis and at interim evaluation had no prognostic role. In multivariate analysis, interim PET, CD68+ cell counts and presence of B-symptoms were independently associated with PFS. We conclude that although TARC levels are a biomarker for early response evaluation, they cannot substitute for interim PET as outcome predictor in HL. The evaluation of CD68 counts and B-symptoms at diagnosis may help to identify low-risk patients regardless positive interim PET.

and risk of short- and long-term toxicity remains a challenge for treatment decisions in HL [2]. Aggressive treatment of advanced stage disease using the BEACOPP regimen has certainly improved disease-free survival, at the cost of infertility and risk of secondary organ damage and neoplasias [3–7]. Classical clinical and laboratory risk factors at diagnosis appear to be of little help for treatment decisions in patients with advanced HL [8, 9].

In 2006, Gallamini *et al.* and Hutchings *et al.* reported that PET examination with [¹⁸F]fluorodeoxyglucose (FDG) after 2 cycles of standard chemotherapy, later on termed “interim-positron emission tomography (PET)”, discriminates PET-negative patients with a very high probability of disease control with the standard chemotherapy regimen Adriamycin, Bleomycin, Vinblastine, Dacarbazine (ABVD), from PET-positive patients where standard therapy is most likely to fail [10, 11]. These data were confirmed by several studies on patient groups with limited or advanced stage disease treated with ABVD, while the prognostic value of interim PET for patients treated with BEACOPP is not well established [12–15]. During a consensus meeting at Deauville in France, criteria have been standardized to evaluate interim PET, by using a 5-point scale [16]. The 5-point scale uses uptakes by the mediastinal blood flow and the liver to quantify residual uptake in a visual evaluation. The Deauville criteria are now widely considered as the most appropriate evaluation method for interim PET [17]. A PET-guided treatment approach allows the early identification of interim PET-positive patients, with insufficient response to standard treatment, as candidates for intensive, although potentially more toxic, treatments [18]. This approach is currently evaluated in prospective studies. A drawback of the PET-guided approach is that patients with poor prognostic features are only identified after 2 months of treatment, significantly delaying intensive treatment choices. In addition, there is a small, but consistent proportion of interim PET-negative patients who will progress or relapse, with a progression-free survival (PFS) around 80–85% as indicated by recent preliminary data [19]. This leaves room for other potential prognosticators in addition to interim PET. For patients with refractory/relapsed HL, Moskowitz *et al.* showed that involvement of extranodal sites and a positive PET result pre-high-dose therapy were independent risk factors [20].

A particular feature of HL is that the neoplastic cells vitally depend on the supporting microenvironment. The cellular composition of the microenvironment impacts prognosis in HL. In 2010, a gene expression study by Steidl *et al.* pointed to the prominent role of tumor-infiltrating macrophages in HL lymphnode biopsies [21]. Over 5% tumor-infiltrating macrophages identified by immunohistochemical staining for the CD68 antigen pick out patients at higher risk for PFS. The number of CD68+ macrophages outperformed the international prognostic score (IPS) in multivariate analysis. These data have been confirmed by several groups, including ours [22–29]. CD68+ cell counts appear as the most reproducible and simple prognostic marker reflecting tumor biology and is currently available, using routine diagnostic methods.

Another common feature of the tumor microenvironment in HL is the overrepresentation of tolerogenic T-cell

populations, that include T helper 2 (TH2) cells and regulatory T cells (Treg). These cells create a favorable immunological environment for the survival and proliferation of HRS cells. The chemokine thymus and activation-regulated chemokine (TARC), also termed CCL17, engages the chemokine receptor CCR4 expressed on regulatory T and TH2 cells, recruiting these cells into HL lesions. TARC is highly expressed by HRS cells, secreted into the serum, and can be detected at high levels at HL diagnosis [30–32]. Recent data suggest that early changes in TARC levels during chemotherapy may be a biomarker for response evaluation [33, 34].

We studied whether microenvironment CD68+ cell counts and TARC levels at HL diagnosis and following 2 cycles of ABVD add prognostic information to interim PET.

Materials and Methods

Patient characteristics

Our analysis included 102 patients (median age 38 years, range 15–74 years; 47 females and 55 males), diagnosed with classical HL and treated between February 2007 and January 2014 at the Department of Hematology of the Catholic University in Rome. Patient characteristics, including the IPS score [35] are detailed in Table 1. All patients received chemotherapy according to the ABVD protocol. Patients with limited stage disease received 3 or 4 ABVD cycles, according to the presence of other risk factors as defined by the EORTC [36], followed by involved-field radiotherapy. Patients with advanced stage disease received 6 cycles of ABVD. Only 3 patients with advanced stage disease, with a positive interim PET result (score 4–5 according to Deauville criteria) after 2 cycles of ABVD, were switched to BEACOPP (6 cycles of dose-escalated BEACOPP). Two of them did not achieve metabolic remission after the second-line treatment. Radiotherapy was included for consolidation in patients with a limited-stage disease and initial bulky disease. Informed consent was obtained from patients according to institutional guidelines. The study has been approved by the Institutional review board.

Immunohistochemical analysis

Immunohistochemical analysis for CD68 was performed on 3 μ m tissue slides, using the antihuman mouse monoclonal antibody CD68 (1:100, clone PGM-1; Dako, High Glostrup, Denmark) after proteolytic treatment (pronase 0.05% in tris buffer pH 7.6) for 10 min at room temperature. Immunodetection was performed using an avidin–biotin–peroxidase complex solution (ScyTek, Logan,

Table 1. Patient characteristics and interim PET.

Patient characteristics	Patients	Interim PET		<i>P</i> ¹
		Negative	Positive	
Number	102	85	15	
Age				
Median, range (year)	38 (15–74)	38 (15–74)	44 (20–72)	
>45 years	29 (29%)	23 (27%)	6 (40%)	0.4
Gender				
Male	55 (54%)	44 (52%)	11 (73%)	0.2
Histologic subtype				
NS	86 (84%)	71 (84%)	13 (86%)	1.0
NS 1	45 (44%)	38 (45%)	7 (47%)	
NS 2	27 (26%)	21 (25%)	4 (27%)	
MC	4 (4%)	3 (4%)	1 (7%)	
LR	2 (2%)	2 (2%)	0 (0%)	
NOS	10 (10%)	9 (10%)	1 (7%)	
Stage				
Advanced (IIB–IV)	49 (48%)	36 (42%)	13 (87%)	0.002
B-symptoms				
Yes	38 (37%)	28 (33%)	10 (67%)	0.02
Bulk >5 cm				
Yes	54 (53%)	44 (52%)	9 (60%)	0.6
IPS score				
≥2	25 (25%)	15 (18%)	10 (67%)	0.001

NS, nodular sclerosis; NS1, nodular sclerosis type 1 according to BNLI criteria; NS2, nodular sclerosis type 2 according to BNLI criteria; MC, mixed cellularity; LR, lymphocyte-rich; NOS: not otherwise specified; IPS, international prognostic score.¹

P-value of Fisher's exact test. Wilcoxon ranked sum test was used for comparison of median age. Two patients were excluded from the analysis, as interim PET was scored not evaluable due to unspecific FDG accumulation. Significant *P*-values are shown in bold.

UT), 3,39-diaminobenzidine as the chromogen, and Mayer hematoxylin as the counterstain. We used the immunohistochemical score proposed by Steidl et al. with a cut-off at 5% CD68-positive cells [21].

ELISA for plasma TARC levels

Plasma samples were collected prior to treatment start and at interim PET, and stored at -70°C . TARC levels were determined using a sandwich enzyme-linked immunoassay, according to the manufacturer's instructions (Human CCL-17/TARC DuoSet, R&D Systems, Inc., Minneapolis, MN). A group of 63 healthy individuals (29 males, 34 females; median age 33 years) was used as control group.

Interim PET

PET-CT studies were performed using an integrated PET-CT device (GEMINI GXL distributed by Philips

Medical System or BIOGRAPH distributed by Siemens. PET-CT images were evaluated by two independent nuclear medicine physicians, using a dedicated fusion and display software (SYNTEGRA by Philips, Milan, Italy or SYNGO. VIA by Siemens, Milan, Italy).

Interim PET was performed after the second ABVD course, few days before the third course. The criteria for PET-2 interpretation were based on visual assessment of FDG uptake, and scored for intensity of FDG uptake according to the Deauville 5-point scoring system [16, 17]. Interim PET scans with a score of 4 that equals a FDG uptake that moderately exceeds the FDG uptake in the liver, and 5 (markedly increased uptake > liver and/or new lesions related to lymphoma) were considered positive.

Statistical analysis

Fisher's exact test was used to examine for differences in patient characteristics according to interim PET and the CD68+ cell count. Wilcoxon signed rank test was used for two-sample comparisons of TARC plasma levels, as between patient and control groups, or according to dichotomized patient characteristics. The primary survival end point was PFS, with progression during treatment, lack of complete remission at the end of first-line treatment, relapse, and death from any cause counted as adverse events. A positive interim PET result in the absence of progression that lead to change in therapy from ABVD to BEACOPP in 3 patients was not counted as event. Survival curves were estimated using the Kaplan–Meier product limit method. Log-rank tests were used to analyze for differences in PFS. Hazard ratios and 95% confidence intervals were adjusted for multiple prognostic factors using the Cox proportional hazards model. All parameters that resulted significant ($P < 0.05$) in the univariate analysis were included into the multivariate analysis. These factors were: interim PET result, stage of disease, presence of B-symptoms, IPS score, and CD68 count. In order to optimize the prognostic model, we performed a stepwise model selection using the Akaike information criterion (AIC). Computations were performed using the Stata 10.0 software (Stata Corp., College Station, TX).

Results

Interim PET

Interim PET-CT scans following 2 ABVD cycles were scored according to the Deauville scoring system in 102 patients with classical HL. In 2 patients, significant FDG accumulation within brown fat tissue did not allow to discriminate for metabolic activity in sites of previous disease. The interim PET scan was scored negative

(Deauville score 0–3), in 85 patients (83%), while it was positive in 15 patients (15%). Looking at patients' characteristics, there was a significant association between interim PET-positivity, advanced stage of disease ($P = 0.002$), presence of B-symptoms at diagnosis ($P = 0.02$) and an IPS score >2 ($P = 0.001$) (Table 1).

TARC levels at diagnosis and interim PET

TARC levels were determined at diagnosis in 80 patients, and were significantly higher than those of controls ($P > 0.001$) (Fig. 1). TARC levels were above the normal range (upper limit 162 U/mL) at diagnosis in 89% (71/80) of patients with cHL. Significantly higher TARC levels were observed in patients younger than 45 years ($P = 0.02$), and patients with bulky disease ($P = 0.02$) (Table 2). Plasma was available at the time of interim PET in 65 patients. TARC levels decreased at interim PET in 57 patients, but persisted elevated (>162 U/mL) in 12 patients (18%) (Fig. 2). Persistently elevated TARC levels were significantly associated with a positive PET result ($P = 0.007$) (Fig. 2).

Association of the number of CD68+ macrophages with patient characteristics and interim PET results

Tumor biopsies of 79 patients at the time of HL diagnosis were stained for the CD68 antigen and scored using the

Table 2. Thymus and activation-regulated chemokine (TARC) levels according to patient characteristics.

Parameter	Variable	Cases ($n = 80$)	TARC (U/mL) median	P^1
Age	<45 years	58	2613	0.02
	>45 years	22	811	
Gender	Female	40	2571	0.07
	Male	40	949	
Histologic subtype	NS	70	1885	0.1
	Others	10	661	
Stage	Limited	42	1100	0.08
	Advanced	38	2612	
B-symptoms	No	55	1182	0.2
	Yes	25	2059	
Bulk >5 cm	No	31	942	0.02
	Yes	47	3829	
IPS	IPS 0–2	61	1482	0.7
	IPS 3–7	19	2554	
CD68+	<5%	30	3206	0.1
	>5%	33	924	

¹ P -value of Wilcoxon ranked sum test that was used for comparison of TARC levels according to patient characteristics.

Significant P -values are shown in bold.

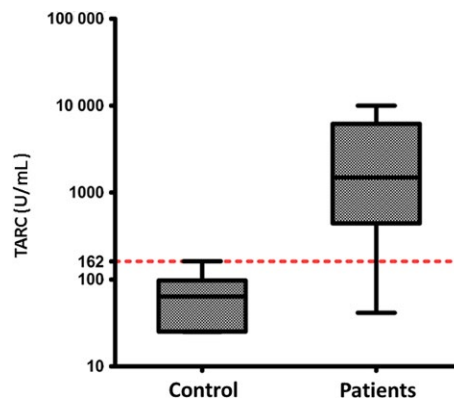


Figure 1. Thymus and activation-regulated chemokine (TARC) Plasma levels are increased in Hodgkin lymphoma (HL) patients at diagnosis than in controls. TARC levels were significantly higher in HL patients ($n = 80$, median 162 U/mL) when compared to controls ($n = 63$, median 64 U/mL) ($P < 0.001$). The upper border of the box indicates the 75th percentile, while the lower border indicates the 25th percentile, and the horizontal line in the box the median. The vertical lines are the whiskers indicating the maximum and minimum values. TARC levels in controls were used to define the upper normal value (dashed line, 162 U/mL).

immunohistochemical system proposed by Steidl et al. [21]. Over 5% CD68 positive cells were counted in 39/79 (49%) patients. CD68+ cell counts $>5\%$ were frequent in patients aged over 45 years (17/22, 77%), when compared to younger patients (24/59, 41%) ($P = 0.005$). There were no other associations between CD68+ cell count and patient characteristics as listed in Table 1.

We observed a direct correlation between interim PET score and CD68 cell counts in the tumor biopsy. When grouping patients according to the consensus cut for PET-positivity, which is score 4 [16], the association between a positive interim PET and higher CD68 counts was not significant (8/39, 21% vs. 4/40, 10%; $P = 0.2$). On the other hand, patients with interim PET score 1 or 2 according to the Deauville system frequently had less than 5% CD68+ counts, while patients scored 3–5 had significantly higher CD68+ cell counts at diagnosis ($P < 0.05$) (Table 3).

Associations of CD68+ cell count and interim PET with outcome

At a median follow-up of 32 months (range 4–88 months), 23 of 102 patients had disease progression, which translated into a 77% probability of PFS (95% CI, 67–84%). The univariate analysis showed that positive interim PET was associated with significantly worse PFS ($P < 0.0001$) (Fig. 3A), as was the number of CD68+ macrophages ($P = 0.006$) (Fig. 3B), advanced stage of disease ($P = 0.008$), presence of B-symptoms ($P = 0.0002$, Fig. 3C) and IPS

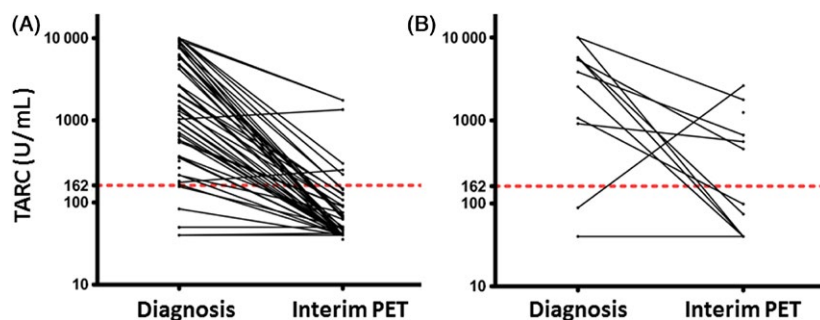


Figure 2. Elevated Plasma levels of thymus and activation-regulated chemokine (TARC) at diagnosis predicted interim positron emission tomography (PET). TARC levels were elevated at interim PET in only 6 of 51 (12%) patients with a negative interim PET (A), while they persisted elevated in 6 of 12 (50%) patients with a positive interim PET (B, $P = 0.007$). The dashed line indicates the upper normal value.

Table 3. CD68+ cell count and interim positron emission tomography (PET).

Interim PET (Deauville score)	CD68		Total no. of patients
	<5%	>5%	
1	18	15	33
2	17	9	26
3	1	7	8
4	4	7	11
5	0	1	1
Total	40	39	79

$P < 0.05$, Fisher's exact test. Patients with CD68 counts <5% had lower Deauville scores at interim PET when compared to patients with CD68 counts >5%.

Significant P -values are shown in bold.

score >2 ($P = 0.009$, data not shown). TARC levels at diagnosis and at interim PET had no prognostic significance (Fig. 3D and E). We also analyzed the prognostic relevance of interim TARC levels in addition to interim PET results. Interim TARC levels did not add any prognostic information to interim PET ($P = 0.4$ for interim PET negative patients, $P = 0.5$ for interim PET positive patients).

The multivariate Cox proportional hazard regression analysis showed that interim PET, number of CD68+ cells and the presence of B-symptoms were independent prognostic factors ($P = 0.001$, $P = 0.01$, and $P = 0.04$, respectively), while the IPS score and stage of disease did not play a significant role (Table 4). A stepwise model selection using the AIC confirmed a multivariate model including the interim PET, number of CD68+ cells, and presence of B-symptoms.

Integrating the three significant parameters, we were able to identify patient groups characterized by significantly different prognosis. Patients ($n = 30$) with <5% CD68+ cell counts, without B-symptoms had a 92% (95% CI: 72–98%) probability of PFS, independent from interim

PET scan result (Fig. 4A). Patients with both B-symptoms and CD68+ cell counts >5% ($n = 17$) had a poor prognosis (PFS of 45%; 95% CI: 20–66%). In this group, a negative interim PET identified a still favorable prognostic group, compared to patients with a positive PET (PFS: 72% vs. 0% for patients with a positive interim PET, $P = 0.003$) (Fig. 4C). Patients with either B-symptoms or CD68+ cell counts >5% ($n = 31$) and a negative interim PET still had a trend for better outcome (85% vs. 33% at 32 months, $P = 0.06$) (Fig. 4B).

Discussion

We report that the number of CD68+ tumor-infiltrating macrophages and presence of B-symptoms are prognostic markers in ABVD-treated HL also in the era of interim PET, while changes in TARC levels do not add prognostic information. More importantly, this is the first study showing that the integration of interim [^{18}F]-FDG-PET/CT scan results after 2 chemotherapy cycles with presence of B-symptoms and CD68+ cell counts at diagnosis, improves risk-stratification of patients with HL. This additional information may help to identify a group of low-risk patients for whom interim PET is not predictive, and a high-risk patients group who are still at risk also when PET is negative. In our study, the interim PET evaluation was performed according to the recommended 5-point Deauville scale [17]. PET results in our patients are in line with other recent reports on 84% PFS of interim PET-negative patients [19]. However, these figures are lower than initial studies, who reported more than 90% PFS in interim PET-negative patients [10, 11, 19].

We found that TARC plasma levels were elevated at diagnosis in the vast majority of patients with classical HL, and turned to normal following 2 cycles of ABVD. Persistently elevated TARC levels were associated with a higher risk of a positive interim PET. This is in line with two recent

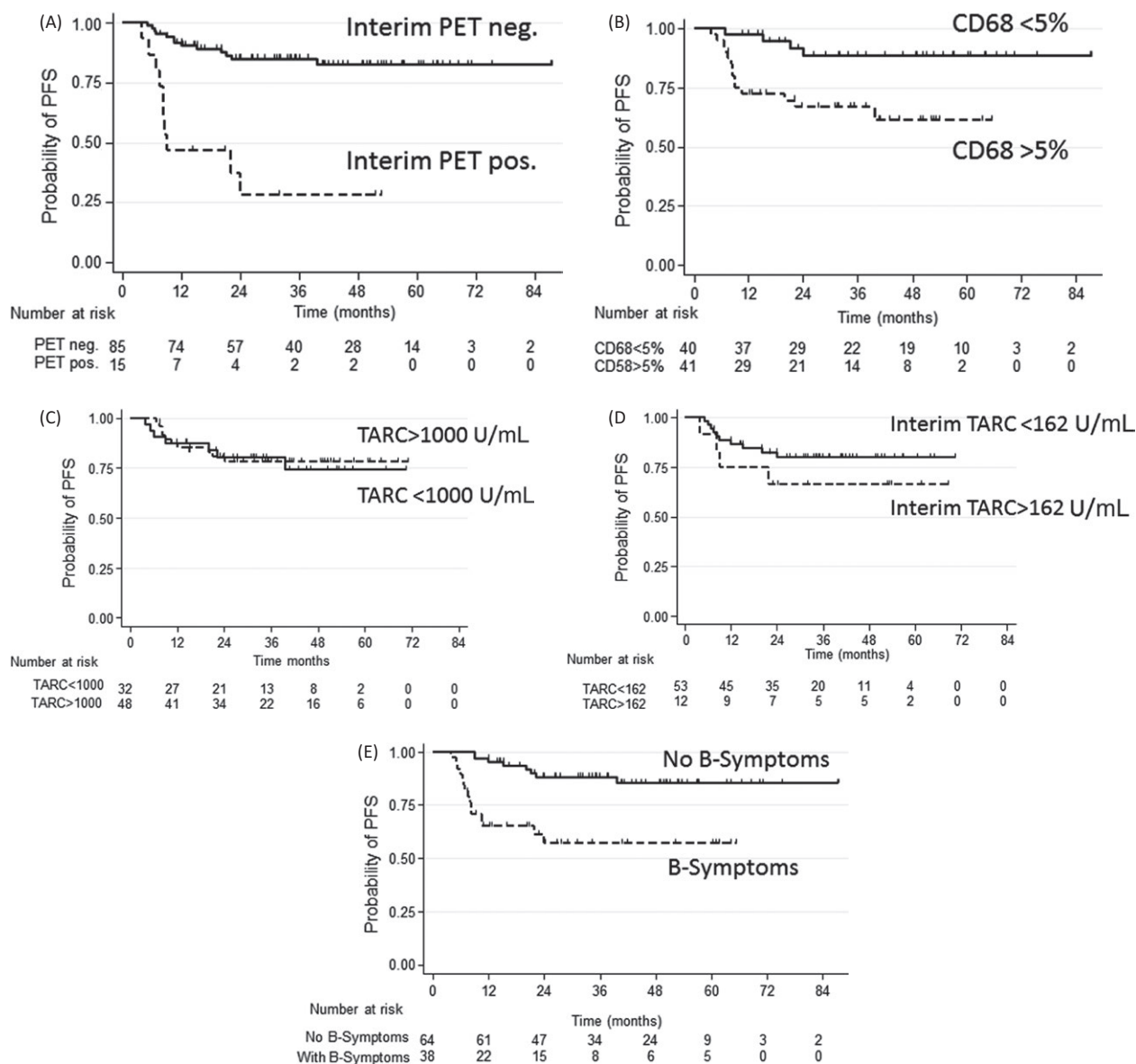


Figure 3. Progression-free Survival according to interim [^{18}F]fluorodeoxyglucose (FDG)-positron emission tomography (PET)/CT scan, CD68+ cell counts and thymus and activation-regulated chemokine (TARC) levels at diagnosis and at interim PET. Patients with an interim PET score of 1–3 were considered PET-negative ($n = 85$), and patients with a score of 4–5 were scored PET-positive ($n = 15$). After a median observation time of 32 months, the probability of progression-free survival (PFS) was 85% (95% CI: 75–91%) for PET-negative patients, while it was only 28% (95% CI: 8–53%) for PET-positive patients. The difference was highly statistically significant ($P < 0.0001$). (A) Patients with CD68+ cell counts <5% ($n = 40$) had a significantly higher probability of PFS at 32 months (89%, 95% CI: 72–96%), than patients with CD68+ cell count >5% ($n = 39$) (67%, 95% CI: 50–79%; $P = 0.006$). (B) The PFS probability was similar for patients with TARC levels below or over >1000 U/mL at initial diagnosis ($n = 32$ and $n = 48$, respectively) (C) Patients with increased TARC levels (>162 U/mL, $n = 12$) at interim PET had a PFS (PFS: 67%, 95% CI: 34–86%), similar to patients with TARC levels <162 U/mL ($n = 53$, PFS: 80%, 95% CI: 66–89%, $P = 0.3$). (D) Patients with B-symptoms ($n = 38$) had a significant inferior probability of PFS (57%, 95% CI: 39–72%), when compared to patients without B-symptoms ($n = 64$) (88%, 95% CI: 77–94%) ($P = 0.002$).

studies suggesting that early changes of TARC may be a useful blood biomarker [33, 34]. However, in our study absolute TARC levels or their changes did not add prognostic information to interim PET. Studied with larger patient numbers and events are required to address this issue.

Macrophage count was higher than 5% in about half of the patients, and was associated to patients' age over 45 years. This is in line with our previous observation, indicating that the number of CD68+ cells is higher in EBV-associated HL that is typically more frequent in older

Table 4. Multivariate Cox analysis of progression-free survival of 79 patients with HL, treated with ABVD.

Variable		Hazard ratio	95% CI	<i>P</i> *
PET	Positive versus negative	7.5	2.3–24.7	0.001
CD68	>5% versus <5%	4.3	1.4–13.5	0.01
Stage	IIb-IV versus I-IIa	0.8	0.2–3.3	0.8
B-symptoms	Yes versus no	4.4	1.1–18.6	0.04
IPS score	>2 versus 0–2	0.8	0.3–2.5	0.8

Significant *P*-values are shown in bold.

patients [22]. Patients with >5% CD68+ cell counts were likely to have a higher (≥3) Deauville score at interim PET. A Deauville score of 3 defines a residual FDG uptake higher than the mediastinal blood flow, but not exceeding activity in the liver. Potential associations between the CD68 count in the microenvironment and PET results in HL have been recently addressed, with conflicting results. Touati et al. [28], reported that the frequency of CD68+ cells correlates to interim-PET results. In contrast, Agur et al. [29] reported that CD68 counts correlate to the initial tumor mass and residual tumor size, but not to interim PET result and PFS. We think that homogenous treatment, standardized scoring of interim PET according to Deauville criteria, and CD68 evaluation by an expert hematopathologist, eliminating inter-observer variability are key issues of quality in our study.

The direct correlation between number of CD68+ macrophages and Deauville score at interim PET may indicate that lymphomas with higher initial macrophage content

are at higher probability of treatment resistance, or that persisting macrophages contribute to residual accumulation of [¹⁸F]-FDG. On the other hand, one could also speculate that persisting macrophages stimulate metabolic activity of HRS cells.

We found that the presence of B-symptoms is an independent prognosticator in the multivariate analysis. B-symptoms are associated with a variety of other laboratory abnormalities and patient characteristics, in particular advanced-stage disease, and therefore have been often removed in multivariate analyses models, as in the IPS [35]. B-symptoms are due to the production of pro-inflammatory cytokines by the Hodgkin tumor tissue, in particular IL-1, TNF-alpha, and IL-6, which are detected at increased levels in peripheral blood [37]. We found that TARC levels are not predictive of outcome. On the other hand, cytokine models including IL-6, sCD30 and TNFR1 levels was more predictive than the standard clinical score [37]. It will be of great interest to explore whether in the multivariate analysis including CD68+ cell counts and interim PET, the cytokine score could beat clinical characteristics as B-symptoms.

Our study shows that histological (CD68 counts) and clinical characteristics at diagnosis provide prognostic information already at treatment start, and not only after 2 cycles of ABVD. Patients with low CD68+ cell counts and without B-symptoms may have a favorable outcome, despite a positive interim PET scan. On the other hand, patients with high CD68+ cell counts and B-symptoms are at high risk, and treatment results may be poor also in the presence of a negative interim PET. It remains to be determined whether this group could benefit from

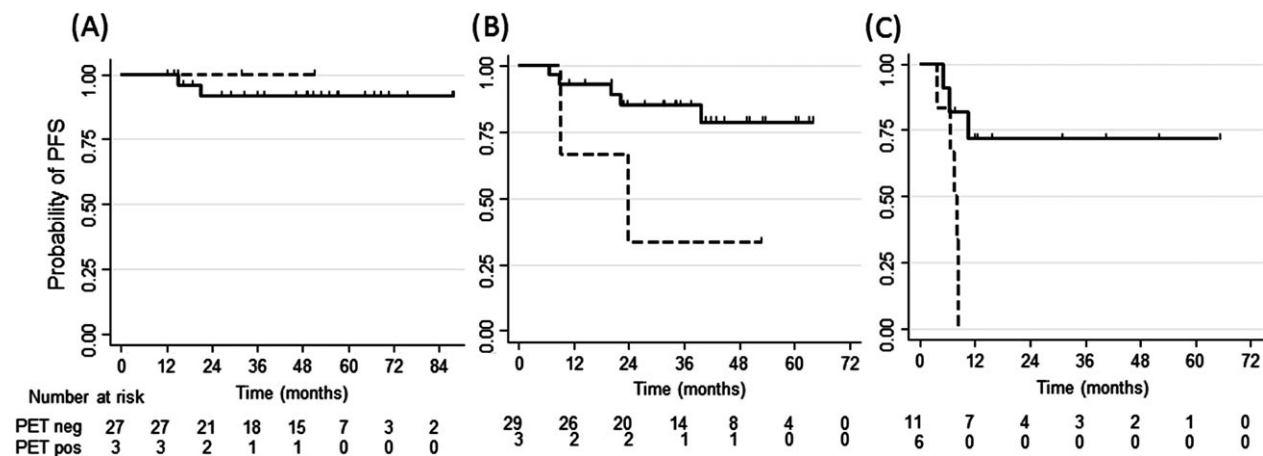


Figure 4. Progression-free survival according to interim positron emission tomography (PET) scan in patients according to CD68+ cell count and B-symptoms. PFS curves are shown for patients with CD68+ <5% and no B-Symptoms (A), CD68 > 5% or B-symptoms (B), and CD68 >5 and B-symptoms (C). The continuous line indicates patients with negative interim PET, the dashed line patients with a positive interim PET. The survival difference is significant in patients with both CD68 counts >5% and B-symptoms (*P* = 0.003), while there is a trend for significance in the group with either CD68 count>5% or B-symptoms (*P* = 0.06).

intensified treatment strategies, as the BEACOPP regimen, or addition of new agents, as brentuximab vedotin, right from therapy start. In advanced HL, we are still in need of markers that are not only prognostic, but predictive and can help to tailor first-line therapeutic approaches.

In conclusion, the frequency of CD68+ macrophages at HL diagnosis remains a significant prognostic marker. Patients with a CD68 count >5% and B-symptoms are at high-risk for early progression. It is important to underline that the numbers of this subgroup analyses are small and have therefore to be considered explorative. Technological improvements in the near future using the nanostring technology will probably render the evaluation of the tumor-associated macrophage count more robust and overcome some variability due to the use of different antibody clones (KP1 and PGM1), varying thresholds and inter-observer differences [38]. Moreover, validation of our data on a potential prognostic algorithm integrating information at diagnosis and response evaluation according to interim PET-CT may provide the basis for innovative risk-adapted treatment protocols in HL.

Acknowledgments

This work was supported by grants from AIRC (Associazione Italiana per la Ricerca sul Cancro), MURST (Ministero dell'Università e della Ricerca Scientifica e Tecnologica), and Fondi d'Ateneo, Linea D1, Università Cattolica del Sacro Cuore. M. G. was supported by Fondazione Roma - Progetto Cellule Staminali.

Conflicts of Interest

The authors have no conflicts of interest to declare.

References

1. Townsend, W., and D. Linch. 2012. Hodgkin's lymphoma in adults. *Lancet* 380:836–847.
2. Advani, R. 2011. Optimal therapy of advanced Hodgkin lymphoma. *Hematology* 2011:310–316.
3. Diehl, V., J. Franklin, M. Pfreundschuh, B. Lathan, U. Paulus, D. Hasenclever, et al. 2003. Standard and increased-dose BEACOPP chemotherapy compared with COPP-ABVD for advanced Hodgkin's disease. *N. Engl. J. Med.* 348: 2386–2395.
4. Engert, A., V. Diehl, J. Franklin, A. Lohri, B. Dörken, W. D. Ludwig, et al. 2009. Escalated-dose BEACOPP in the treatment of patients with advanced-stage Hodgkin's lymphoma: 10 years of follow-up of the GHSg HD9 study. *J. Clin. Oncol.* 27:4548–4554.
5. Wongso, D., M. Fuchs, A. Plütschow, B. Klimm, S. Sasse, B. Hertenstein, et al. 2013. Treatment-related mortality in patients with advanced-stage Hodgkin lymphoma: an analysis of the German Hodgkin study group. *J. Clin. Oncol.* 31:2819–2824.
6. Eichenauer, D. A., I. Thielen, H. Haverkamp, J. Franklin, K. Behringer, T. Halbsguth, et al. 2014. Therapy-related acute myeloid leukemia and myelodysplastic syndromes in patients with Hodgkin lymphoma: a report from the German Hodgkin Study Group. *Blood* 123:1658–1664.
7. Behringer, K., H. Mueller, H. Goergen, I. Thielen, A. D. Eibl, V. Stumpf, et al. 2013. Gonadal function and fertility in survivors after Hodgkin lymphoma treatment within the German Hodgkin Study Group HD13 to HD15 trials. *J. Clin. Oncol.* 31:231–239.
8. Venkataraman, G., M. K. Mirza, D. A. Eichenauer, and V. Diehl. 2014. Current status of prognostication in classical Hodgkin lymphoma. *Br. J. Haematol.* 165:287–299.
9. Cuccaro, A., F. Bartolomei, E. Cupelli, E. Galli, M. Giachelia, and S. Hohaus. 2014. Prognostic factors in Hodgkin lymphoma. *Mediterr. J. Hematol. Infect. Dis.* 6:e2014053. doi: 10.4084/MJHID.2014.053. eCollection 2014.
10. Gallamini, A., L. Rigacci, F. Merli, L. Nassi, A. Bosi, I. Capodanno, et al. 2006. The predictive value of positron emission tomography scanning performed after two courses of standard therapy on treatment outcome in advanced stage Hodgkin's disease. *Haematologica* 91:475–481.
11. Hutchings, M., A. Loft, M. Hansen, L. M. Pedersen, A. K. Berthelsen, S. Keiding, et al. 2006. Positron emission tomography with or without computed tomography in the primary staging of Hodgkin's lymphoma. *Haematologica* 91:482–489.
12. Gallamini, A., M. Hutchings, L. Rigacci, L. Specht, F. Merli, M. Hansen, et al. 2007. Early interim 2-[18F] fluoro-2-deoxy-D-glucose positron emission tomography is prognostically superior to international prognostic score in advanced-stage Hodgkin's lymphoma: a report from a joint Italian-Danish study. *J. Clin. Oncol.* 25:3746–3752.
13. Gallamini, A., S. F. Barrington, A. Biggi, et al. 2014. The predictive role of interim positron emission tomography for Hodgkin lymphoma treatment outcome is confirmed using the interpretation criteria of the Deauville five-point scale. *Haematologica* 99:1107–1113.
14. Avigdor, A., S. Bulvik, I. Levi, et al. 2010. Two cycles of escalated BEACOPP followed by four cycles of ABVD utilizing early-interim PET/CT scan is an effective regimen for advanced high-risk Hodgkin's lymphoma. *Ann. Oncol.* 21:126–132.
15. Dann, E. J., Z. Blumenfeld, R. Bar-Shalom, et al. 2012. A 10-year experience with treatment of high and standard risk Hodgkin disease: six cycles of tailored BEACOPP, with interim scintigraphy, are effective and female fertility is preserved. *Am. J. Hematol.* 87:32–36.

16. Meignan, M., A. Gallamini, and C. Haioun. 2009. Report on the First International Workshop on Interim-PET-Scan in Lymphoma. *Leuk. Lymphoma* 50:1257–1260.
17. Barrington, S. F., N. G. Mikhaeel, L. Kostakoglu, et al. 2014. Role of imaging in the staging and response assessment of lymphoma: consensus of the international conference on malignant lymphomas imaging working group. *J. Clin. Oncol.* 32: 3048–3058.
18. Gallamini, A., C. Patti, S. Viviani, et al. 2011. Early chemotherapy intensification with BEACOPP in advanced-stage Hodgkin lymphoma patients with a interim-PET positive after two ABVD courses. *Br. J. Haematol.* 152:551–560.
19. Rossi, C., S. Kanoun, A. Berriolo-Riedinger, et al. 2014. Interim 18F-FDG PET SUV max reduction is superior to visual analysis in predicting outcome early in Hodgkin lymphoma patients. *J. Nucl. Med.* 55:569–573.
20. Moskowitz, C. H., M. J. Matasar, A. D. Zelenetz, et al. 2012. Normalization of pre-ASCT, FDG-PET imaging with second-line, non-cross-resistant, chemotherapy programs improves event-free survival in patients with Hodgkin lymphoma. *Blood* 119:1665–1670.
21. Steidl, C., T. Lee, S. P. Shah, et al. 2010. Tumor-associated macrophages and survival in classic Hodgkin's lymphoma. *N. Engl. J. Med.* 362:875–885.
22. Hohaus, S., R. Santangelo, M. Giachelia, et al. 2011. The viral load of Epstein-Barr virus (EBV) DNA in peripheral blood predicts for biological and clinical characteristics in Hodgkin lymphoma. *Clin. Cancer Res.* 17:2885–2892.
23. Kamper, P., K. Bendix, S. Hamilton-Dutoit, et al. 2011. Tumor-infiltrating macrophages correlate with adverse prognosis and Epstein-Barr virus status in classical Hodgkin's lymphoma. *Haematologica* 96:269–276.
24. Azambuja, D., Y. Natkunam, I. Biasoli, et al. 2012. Lack of association of tumor-associated macrophages with clinical outcome in patients with classical Hodgkin's lymphoma. *Ann. Oncol.* 23:736–742.
25. Tan, K. L., D. W. Scott, F. Hong, et al. 2012. Tumor-associated macrophages predict inferior outcomes in classic Hodgkin lymphoma: a correlative study from the E2496 Intergroup trial. *Blood* 120:3280–3287.
26. Sánchez-Espiridión, B., A. M. Martín-Moreno, C. Montalbán, et al. 2012. Immunohistochemical markers for tumor associated macrophages and survival in advanced classical Hodgkin's lymphoma. *Haematologica* 97:1080–1084.
27. Greaves, P., A. Clear, R. Coutinho, et al. 2013. Expression of FOXP3, CD68, and CD20 at diagnosis in the microenvironment of classical Hodgkin lymphoma is predictive of outcome. *J. Clin. Oncol.* 31:256–262.
28. Touati, M., M. Delage-Corre, J. Monteil, et al. 2015. CD68-positive tumor-associated macrophages predict unfavorable treatment outcomes in classical Hodgkin lymphoma in correlation with interim fluorodeoxyglucose-positron emission tomography assessment. *Leuk. Lymphoma* 56:332–341.
29. Agur, A., G. Amir, O. Paltiel, et al. 2014. CD68 staining correlates with the size of residual mass but not with survival in classical Hodgkin lymphoma. *Leuk. Lymphoma* 56:1315–1319. 2014 Oct [Epub ahead of print] doi: 10.3109/10428194.2014.963081
30. Weihrauch, M. R., O. Manzke, M. Beyer, et al. 2005. Elevated serum levels of CC thymus and activation-related chemokine (TARC) in Primary Hodgkin's Disease: potential for a prognostic factor. *Cancer Res.* 65:5516–5519.
31. Niens, M., L. Visser, I. M. Nolte, et al. 2008. Serum chemokine levels in Hodgkin lymphoma patients: highly increased levels of CCL17 and CCL22. *Br. J. Haematol.* 140:527–536.
32. Sauer, M., A. Plütschow, R. D. Jachimowicz, et al. 2013. Baseline serum TARC levels predict therapy outcome in patients with Hodgkin lymphoma. *Am. J. Hematol.* 88:113–115.
33. Plattel, W. J., A. Van den Berg, L. Visser, et al. 2012. Plasma thymus and activation-related chemokine as an early response marker in classical Hodgkin's lymphoma. *Haematologica* 97:410–415.
34. Jones, K., F. Vari, C. Keane, et al. 2013. Serum CD163 and TARC as disease response biomarkers in classical Hodgkin lymphoma. *Clin. Cancer Res.* 19:731–742.
35. Hasenclevar, D., and V. Diehl. 1998. A prognostic score for advanced Hodgkin's disease. International Prognostic Factors Project on Advanced Hodgkin's Disease. *N. Engl. J. Med.* 339: 1506–1514.
36. Noordijk, E. M., P. Carde, N. Dupouy, et al. 2006. Combined-modality therapy for clinical stage I or II Hodgkin's lymphoma: long-term results of the European Organisation for Research and Treatment of Cancer H7 randomized controlled trials. *J. Clin. Oncol.* 24:3128–3135.
37. Casasnovas, R. O., N. Mounier, P. Brice, et al. 2007. Plasma cytokine and soluble receptor signature predicts outcome of patients with classical Hodgkin's lymphoma: a study from the Groupe d'Etude des Lymphomes de l'Adulte. *J. Clin. Oncol.* 25:1732–1740.
38. Scott, D. W., F. C. Chan, F. Hon, et al. 2013. Gene expression-based model using formalin-fixed paraffin-embedded biopsies predicts overall survival in advanced-stage classical Hodgkin lymphoma. *J. Clin. Oncol.* 31:692–700.