

Cytological and Morphological Analyses Reveal Distinct Features of Intestinal Development during *Xenopus tropicalis* Metamorphosis

Job Sterling¹, Liezhen Fu¹, Kazuo Matsuura, Yun-Bo Shi*

Section on Molecular Morphogenesis, Program in Cellular Regulation and Metabolism (PCRM), Eunice Kennedy Shriver National Institute of Child Health and Human Development (NICHD), National Institutes of Health (NIH), Bethesda, Maryland, United States of America

Abstract

Background: The formation and/or maturation of adult organs in vertebrates often takes place during postembryonic development, a period around birth in mammals when thyroid hormone (T3) levels are high. The T3-dependent anuran metamorphosis serves as a model to study postembryonic development. Studies on the remodeling of the intestine during *Xenopus (X.) laevis* metamorphosis have shown that the development of the adult intestine involves de novo formation of adult stem cells in a process controlled by T3. On the other hand, *X. tropicalis*, highly related to *X. laevis*, offers a number of advantages for studying developmental mechanisms, especially at genome-wide level, over *X. laevis*, largely due to its shorter life cycle and sequenced genome. To establish *X. tropicalis* intestinal metamorphosis as a model for adult organogenesis, we analyzed the morphological and cytological changes in *X. tropicalis* intestine during metamorphosis.

Methodology/Principal Findings: We observed that in *X. tropicalis*, the premetamorphic intestine was made of mainly a monolayer of larval epithelial cells surrounded by little connective tissue except in the single epithelial fold, the typhlosole. During metamorphosis, the larval epithelium degenerates and adult epithelium develops to form a multi-folded structure with elaborate connective tissue and muscles. Interestingly, typhlosole, which is likely critical for adult epithelial development, is present along the entire length of the small intestine in premetamorphic tadpoles, in contrast to *X. laevis*, where it is present only in the anterior 1/3. T3-treatment induces intestinal remodeling, including the shortening of the intestine and the typhlosole, just like in *X. laevis*.

Conclusions/Significance: Our observations indicate that the intestine undergoes similar metamorphic changes in *X. laevis* and *X. tropicalis*, making it possible to use the large amount of information available on *X. laevis* intestinal metamorphosis and the genome sequence information and genetic advantages of *X. tropicalis* to dissect the pathways governing adult intestinal development.

Citation: Sterling J, Fu L, Matsuura K, Shi Y-B (2012) Cytological and Morphological Analyses Reveal Distinct Features of Intestinal Development during *Xenopus tropicalis* Metamorphosis. PLoS ONE 7(10): e47407. doi:10.1371/journal.pone.0047407

Editor: Michelina Plateroti, University Claude Bernard Lyon 1, France

Received: May 8, 2012; **Accepted:** September 14, 2012; **Published:** October 10, 2012

This is an open-access article, free of all copyright, and may be freely reproduced, distributed, transmitted, modified, built upon, or otherwise used by anyone for any lawful purpose. The work is made available under the Creative Commons CC0 public domain dedication.

Funding: This research was supported by the Intramural Research Program of National Institute of Child Health and Human Development, National Institutes of Health. The funders had no role in study design, data collection and analysis, decision to publish, or preparation of the manuscript.

Competing Interests: The authors have declared that no competing interests exist.

* E-mail: Shi@helix.nih.gov

These authors contributed equally to this work.

Introduction

The development of many vertebrate organs takes place in two steps, the formation of an immature but functional organ during embryogenesis followed by the maturation into the adult form. This second step often occurs during the so-called postembryonic development, a period around birth in mammals when plasma thyroid hormone (T3) concentrations are high [1] and involves the formation of organ/tissue-specific adult stem cells, such as the adult intestinal and hematopoietic stem cells [2–4]. The intestine is one such organ that has been well studied due to the continuous self-renewal of the intestinal epithelium, which is responsible for the food processing and nutrient absorption, throughout adult life in vertebrates [5–8]. This self-renewal is accomplished through stem cell divisions in the crypt, followed by their differentiation as

the cells migrate along the crypt-villus axis and eventual death of the differentiated cells near the tip of the villus.

The establishment of the self-renewal system in the intestine takes place during postembryonic development in vertebrates. For example, in mouse, the intestinal epithelium lacks crypts at birth and the villus-crypt axis is formed in the first few weeks after birth as the plasma T3 concentration rises to a peak [2,9,10]. In amphibians such as *Xenopus (X.) laevis*, the transition from the tadpole/larval intestine to the adult form occurs during metamorphosis [2,3,8,11], a process that shares many similarities with postembryonic development in mammals, including the requirement for high levels of T3 [1,12]. The ability to easily manipulate amphibian metamorphosis has enabled extensive morphological, cellular, molecular, and genetic studies of intestinal remodeling during *X. laevis* metamorphosis. The tadpole intestine is made of

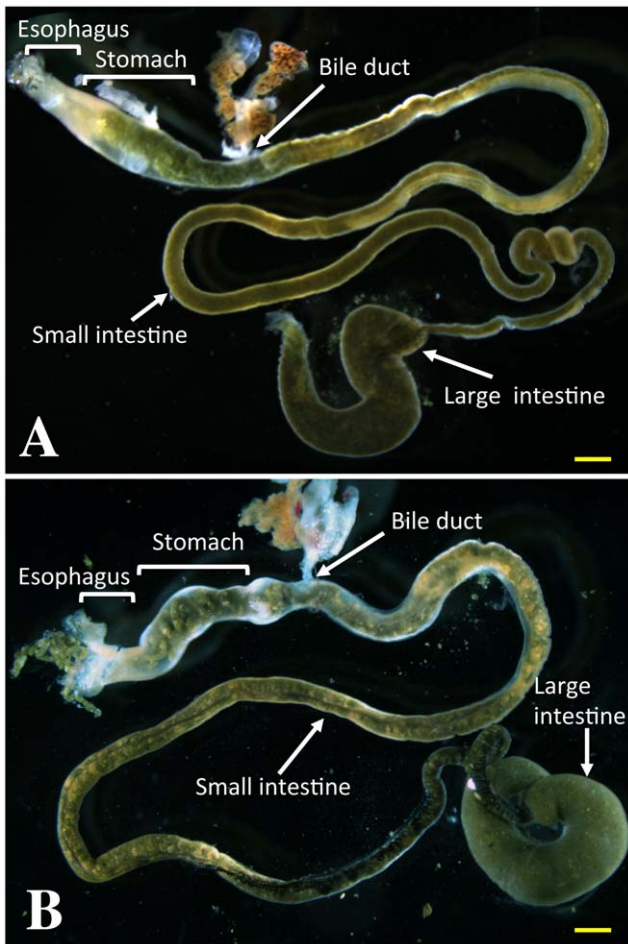


Figure 1. The gastrointestinal tract of a premetamorphic *X. laevis* (A) and *X. tropicalis* (B) tadpoles. Scale bars (yellow lines): 1 mm.
doi:10.1371/journal.pone.0047407.g001

mostly a monolayer of larval epithelial cells, with thin layers of connective tissue and muscles [11]. During metamorphosis, the larval epithelial cells undergo apoptosis and concurrently, adult epithelial stem/progenitor cells are formed de novo and rapidly proliferate [3]. Toward the end of metamorphosis, the adult epithelial cells differentiate to establish a trough-crest axis of epithelial folds, resembling the crypt-villus axis in the adult mammalian intestine, [2,11].

Like other processes during metamorphosis, intestinal remodeling is totally dependent on T3 and can even be induced in cultures of isolated premetamorphic intestine upon T3 treatment [11]. Making use of these properties, we and others have shown that the adult epithelial stem cells are derived from the larval epithelium, likely through dedifferentiation of larval epithelial cells [13–15]. We have further shown that T3 can induce the formation of the progenitors or precursors of the adult epithelial stem cells tissue-autonomously while the formation of the stem cells also require the action of T3 in the surrounding tissues, most likely the underlying connective tissue [16]. In addition, many genes that are regulated during intestinal remodeling have also been identified by using microarray analyses and subtractive screening [17–20]. However, how these genes are regulated by T3 and what roles they play during adult stem cells development are largely unknown. This is in part due to some limitations of the *X. laevis*

model. For example, *X. laevis* has a pseudo-tetraploid genome that has not been sequenced, making it difficult to carry out genome-wide studies such as ChIP (chromatin immunoprecipitation)-seq and ChIP-on-chip assays to study gene regulation mechanisms during development. In addition, it has a lengthy developmental cycle, which makes it difficult to study gene function during metamorphosis.

Using *Xenopus tropicalis*, which is highly related to *X. laevis*, can overcome these limitations [21,22]. Its diploid genome has been sequenced and its developmental cycle is twice as fast as that of *X. laevis*. Furthermore, we and others have shown that the expression of T3 receptors (TRs) and 9-cis retinoic acid receptors (RXR), which form heterodimers to mediate the in vivo effects of T3 during *X. laevis* development [23–27], is similarly regulated during development of *X. tropicalis* and *X. laevis*. In addition, *X. tropicalis* TR/RXR heterodimers have expectedly similar transcriptional activities as *X. laevis* TR/RXR heterodimers [28]. Furthermore, ChIP analyses have shown that, as in *X. laevis*, TR is bound to two well studied TR target genes and induces histone modifications at the corresponding promoters in *X. tropicalis*, again resembling that in *X. laevis* [29,30]. Thus, it is expected that T3 induces metamorphosis in *X. tropicalis* via similar molecular mechanisms as in *X. laevis*.

To investigate the possibility of using *X. tropicalis* as a model to study adult intestinal stem cell development, we have analyzed the morphological and cytological changes of the intestine during metamorphosis in *X. tropicalis*. Our results indicate that the metamorphic transformations in the intestine are conserved between *X. tropicalis* and *X. laevis*. We have also discovered a distinct difference, that is, the presence of the typhlosole throughout premetamorphic small intestine in *X. tropicalis* while only in the anterior 1/3 of the small intestine in *X. laevis*, suggesting possibly distinct regulation of the stem cell development along the anterior-posterior axis of the intestine.

Experimental Procedures

Animals

Xenopus laevis and *Xenopus tropicalis* tadpoles were either purchased from NASCO (Fort Atkinson, WI) or generated and reared in the laboratory. All experiments involving animals were performed following procedures approved by the Animal Use and Care Committee of Eunice Kennedy Shriver National Institute of Child Health and Human Development.

T3 treatment and Methyl Green Pyronin Y (MGPY) Staining

Premetamorphic tadpoles at stage 54 were treated with 5 or 10 nM T3 at 18°C (*Xenopus laevis* tadpoles) or 25°C (*Xenopus tropicalis*) for indicated number of days. The gastrointestinal tract from *Xenopus laevis* and *tropicalis* tadpoles at different stages with or without T3-treatment were isolated and fixed in 4% paraformaldehyde overnight. They were then embedded in OCT compound and cryosectioned. The sections were frozen until further analysis.

For staining with MGPY, a mixture of methyl green, which binds strongly to DNA, and pyronin Y, which binds strongly to RNA [19,25,31], the slides were rinsed three times for 5 minutes each in 1X PBS, incubated in MGPY solution (Muto Pure Chemicals, Japan) for 15 min at room temperature, washed for 1 minute with 1X PBS, then rinsed in H₂O, and finally dried on a slide warmer. The slides were subsequently incubated in 2 changes of Histoclear for 5 minutes each followed by mounting with a coverslip. The intestinal sections were analyzed with a light

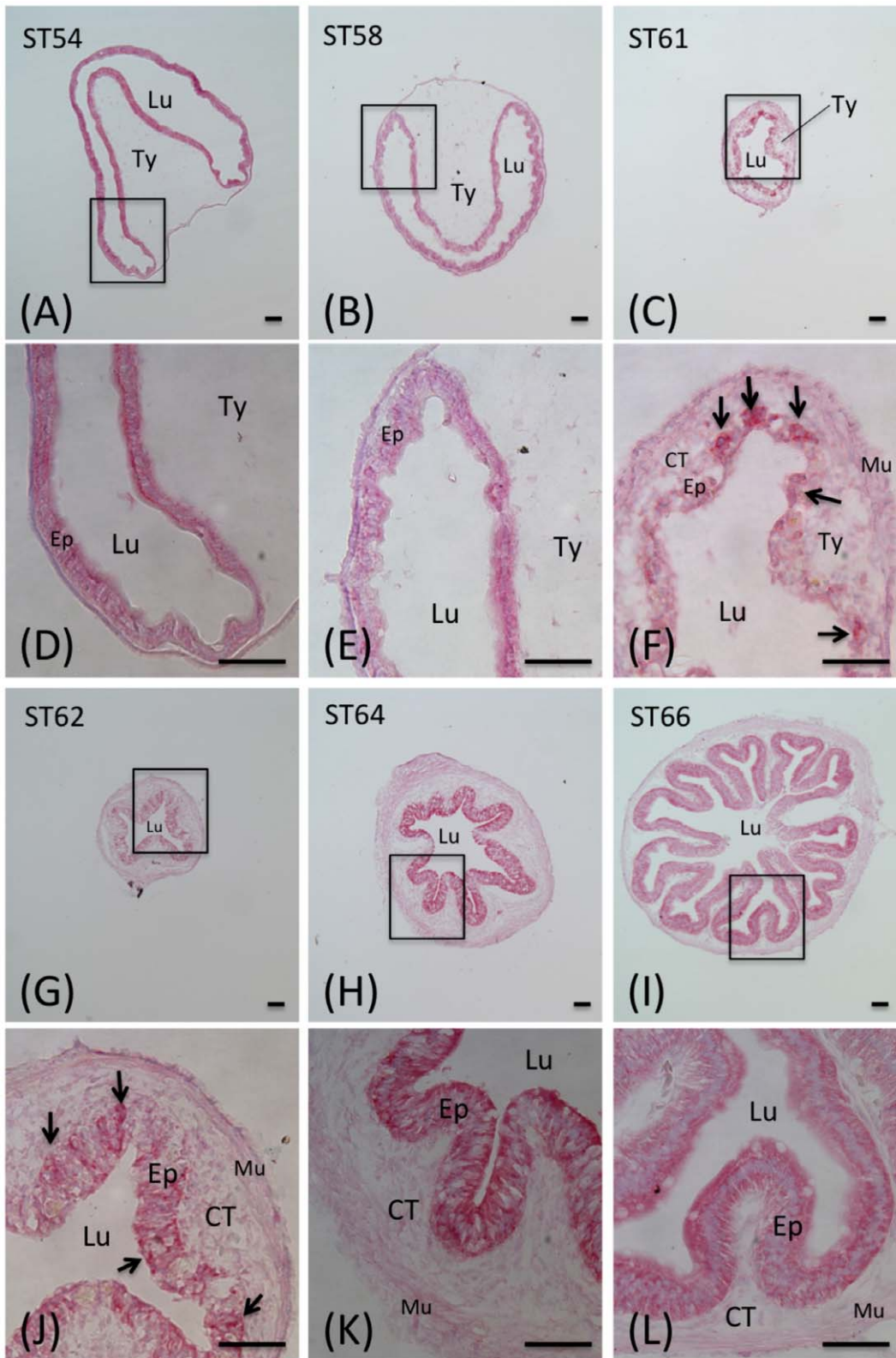


Figure 2. Morphological changes in the *Xenopus tropicalis* intestine during natural metamorphosis. The intestine of *Xenopus tropicalis* tadpoles at stage 54 to 66 was isolated and stained with MGPY and photographed with a light microscope. A–C and G–I: a cross-section of the intestine at the indicated stage. D–F and J–L: the enlarged photo of the boxed area in A–C and G–I, respectively. Note that during metamorphosis, the MGPY staining became weaker in larval epithelium as the cells undergo degeneration. At the climax of metamorphosis, the newly formed, proliferating adult epithelial islets were strongly stained by MGPY (arrows). The connective tissue (CT) and muscles (Mu) increased dramatically during metamorphosis. Ep: epithelium; Lu: lumen; Ty: typhlosole; Scale bars: 50 μ m. doi:10.1371/journal.pone.0047407.g002

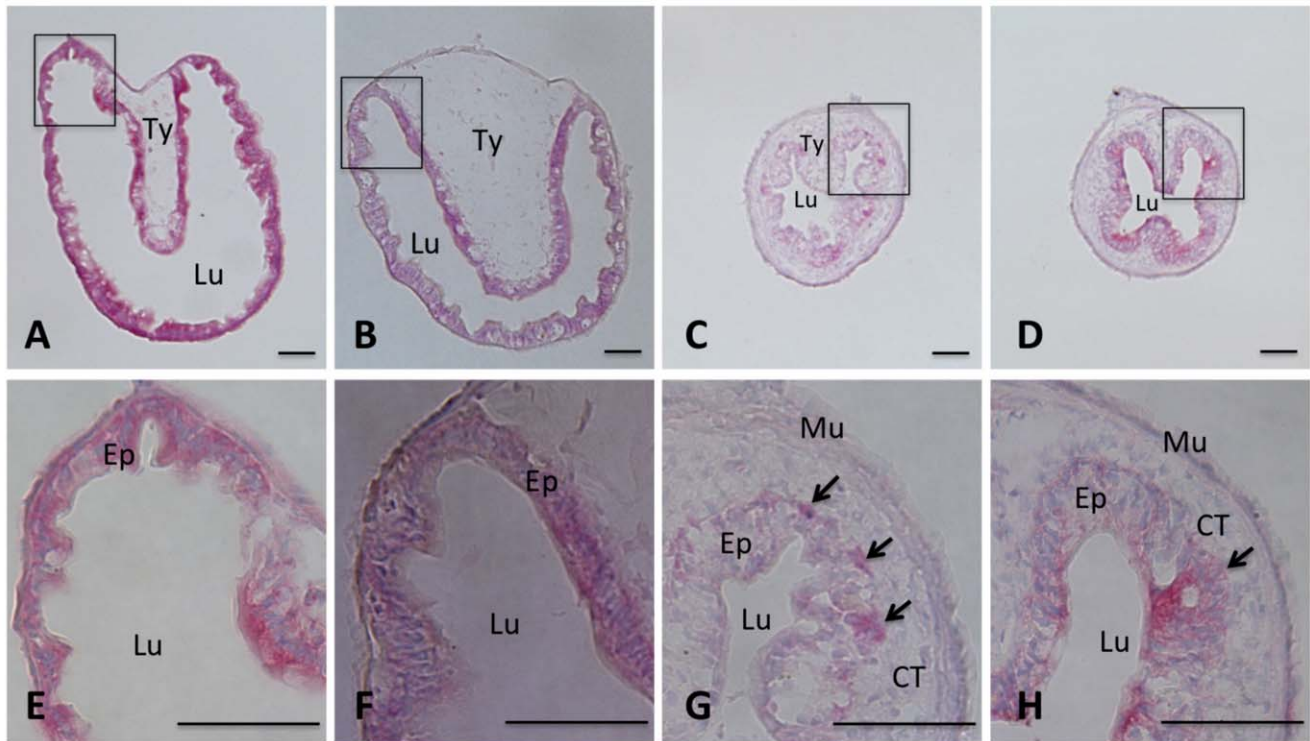


Figure 3. T3 induces intestinal remodeling in premetamorphic *X. tropicalis* tadpoles. Stages 54 *X. tropicalis* tadpoles were treated with 10 nM T3 at 25°C. The intestine was isolated from the tadpoles at day 0, 1, 3, and 5, respectively. The intestine was fixed, sectioned, and stained with MGPY as in Fig. 2. A–D: a cross-section of the intestine after 0, 1, 3, 5 days of T3 treatment, respectively. E–H: the enlarged image of the boxed area for the corresponding tissues in A–D, respectively. Note that after 3 days of T3 treatment, the MGPY staining became weaker in larval epithelium as the cells undergo apoptosis. At the same time, the newly formed, proliferating adult epithelial islets were strongly stained by MGPY (arrows). The connective tissue (CT) and muscles (Mu) increased dramatically during metamorphosis. Ep: epithelium; Lu: lumen; Ty: typhlosole. Scale bars: 50 μm. doi:10.1371/journal.pone.0047407.g003

microscope and the images were recorded with a cool-coiled digital camera.

Terminal deoxynucleotidyl transferase dUTP nick end labeling (TUNEL) assay was performed essentially as previously described to label the apoptotic cell with Biotin-16-dUTP (Roche, IN) [32]. The Biotin-16-dUTP labeled apoptotic cells were visualized with Texas Red-Streptavidin staining (1:200). The sections were counterstained with DAPI, washed with 1X PBS 3 times for 1 minute each and mounted with VECTASHIELD (VECTOR, Burlingame, CA). The intestinal sections were analyzed with a fluorescent microscope and the images were recorded with a cool-coiled digital camera at red fluorescent channel for Texas Red signal as well as blue fluorescent channel for DAPI, respectively, and merged to show the location of the apoptotic cells in the intestinal sections.

Intestinal Measurements

The entire tadpole intestine was dissected intact from tadpoles with or without T3 treatment and analyzed under a dissecting microscope to identify the boundary of the typhlosole in the intestine. The length of the entire intestine and the length of the typhlosole in the intestine were measured with a ruler. At least 3 tadpoles at each time point were measured. The mean and standard error were determined and presented.

Quantitative reverse transcription-polymerase chain reactions (qRT-PCR). Total RNA were extracted from intestines of *X. tropicalis* tadpoles during natural metamorphosis with TRIzol Reagent (Invitrogen, NY) and made DNA-free with DNase I treatment. The total RNA was reverse transcribed into

cDNA as described previously [33] and subjected to qPCR analysis by SYBR® Green PCR (ABI, Foster City, CA). The primers used were 5¢-TTGCCAAGGTTGCTTTCCG-3' and 5¢-GTTTCAGGATTGTGGGAGATAACG-3' for the control gene rpl8 [34], 5¢-CGAGCCGGAGGCACAGACAAAG-3' and 5¢-GCAGGTAGAAGGGTGAGGAGATGC-3' for stromelysin 3 (ST3), as well as 5¢-CCATGGCCTTTGATGGAACC-3' and 5¢-ATCTTCAGGTTGTCGTGTGCT-3' for intestinal fatty acid binding protein gene (IFABP), respectively. The qPCR reactions were reproducibly repeated at least twice with three duplicates for each stage. The values for ST3 and IFABP were normalized against that of rpl8 and presented as means with standard deviations.

Results

The Metamorphosis of the Small Intestine in *X. tropicalis* Involves Degeneration of the Larval Epithelium Followed by the Formation of the New Adult Epithelium

The gastrointestinal tract in a premetamorphic *X. tropicalis* tadpole consists of the esophagus, stomach, small and large intestine as in other vertebrates (Fig. 1). Like in premetamorphic *X. laevis* tadpoles, the small intestine is very long and is the largest part of the gastrointestinal tract.

To examine the changes in the intestine during metamorphosis, cross-sections of the anterior small intestine from *X. tropicalis* tadpoles at different stages of metamorphosis were stained with MGPY, which distinguishes the proliferating adult epithelial cells from the dying larval epithelial cells based on their RNA content

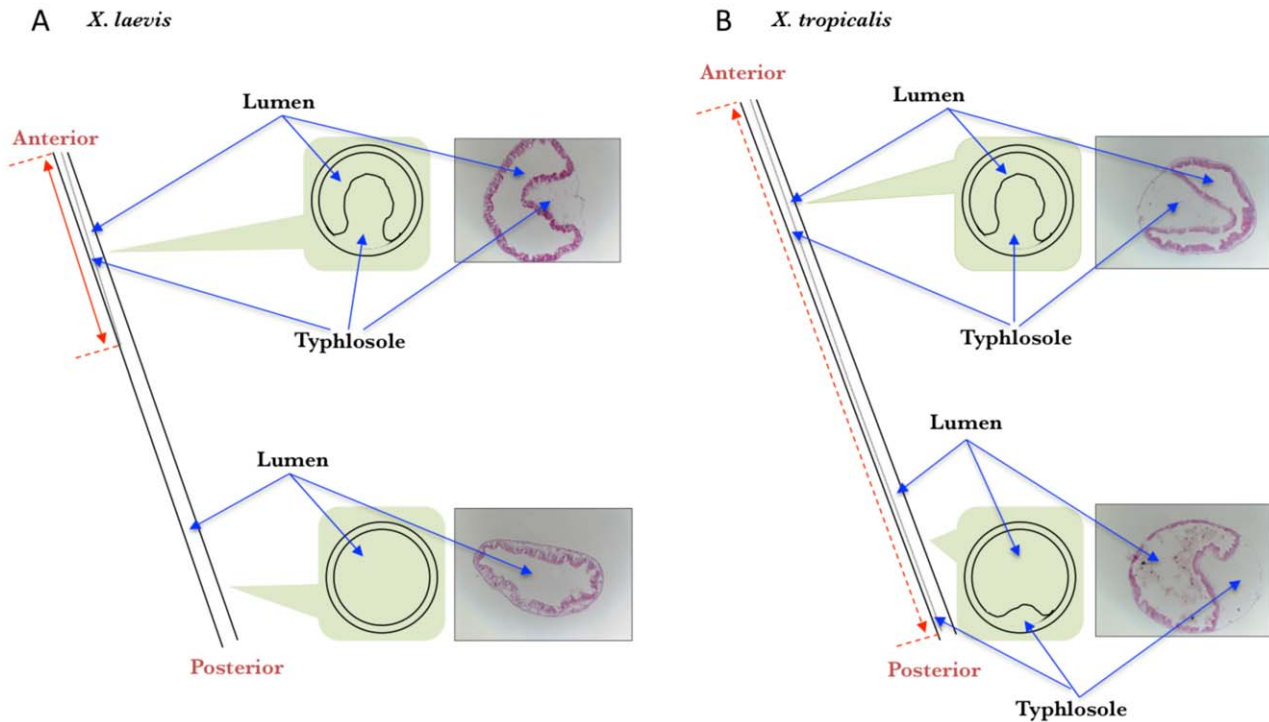


Figure 4. The typhlosole is present in the entire small intestine of premetamorphic *X. tropicalis* tadpoles (A) but only in the anterior small intestine of premetamorphic *X. laevis* tadpoles (B). A schematic diagram of the intestine from the anterior to the posterior is shown on the left (dashed lines indicate the boundaries of typhlosole with the intestines). On the right of each panel shows representative MGPY-stained cross-sections of the intestine from indicated regions of the intestine of premetamorphic tadpoles at stage 54. In the middle is a schematic drawing of the cross-section showing the presence or absence of the typhlosole. Note the presence of the typhlosole in the posterior half of the small intestine in *X. tropicalis* but not *X. laevis*. doi:10.1371/journal.pone.0047407.g004

[19,25,31]. As shown in Fig. 2, at premetamorphic stage 54, the luminal side of the intestine was a monolayer of larval epithelial cells that was stained strongly and uniformly by MGPY (Fig. 2A/D). The epithelium was surrounded by thin layers of connective tissue and outer muscles. There was a single epithelial fold, the typhlosole, where connective tissue was abundant. This structure remained largely unchanged through the onset of metamorphic climax (stage 58, Fig. 2B/E). By the climax of metamorphosis (stages 60–64), the intestine had undergone extensive changes. At stage 61 (Fig. 2C/F), the larval epithelium became very weakly stained by MGPY due to the degeneration of the larval cells, leading to reduced RNA in the cells; at the same time the clusters of newly formed adult epithelial progenitor/stem cells were strongly stained, just like those observed in *X. laevis* [19,25,31]. By stage 62, the adult epithelium began to fold and the typhlosole was no longer observable (Fig. 2G/J). From stage 64–66, the epithelium developed into the multiply folded adult structure (Fig. 2H/K, I/L). All these mimic those during *X. laevis* metamorphosis.

T3 Induces Metamorphic Changes in the Small Intestine in *X. tropicalis* Premetamorphic Tadpoles

T3 treatment of premetamorphic *X. laevis* tadpoles is known to induce similar changes in the intestine as during natural metamorphosis. To investigate T3-induced changes in the intestine of *X. tropicalis* tadpoles, we treated stage 54 tadpoles with T3 for 0–5 days and the intestine was isolated and cross-sections of the anterior small intestine were stained with MGPY. As shown in Fig. 3, after 0 or 1 day of T3 treatment, the

intestinal epithelium was stained uniformly and there were little connective tissue and muscles except in the typhlosole where the connective tissue was abundant (Fig. 3 A, B/E, F). After 3 days of treatment, most of the larval epithelium became weakly stained as the larval cells degenerated and clusters of newly formed adult cells were strongly stained (Fig. 3C/G), resembling the intestine at stage 61 (Fig. 2 D/H). After 5 days, most of the epithelium was stained well and adult epithelial folds began to form and the typhlosole was no longer recognizable (Fig. 4D/H), similarly to the intestine at stage 62 (Fig. 2 I/L). The connective tissue and muscles developed extensively by the end of the treatment. Thus, T3-induces intestinal remodeling mimics that during natural metamorphosis.

The Typhlosole is Present Along the Entire Length of the Small Intestine of Premetamorphic *X. tropicalis* Tadpoles

The typhlosole is an interesting and important structure of the intestine in premetamorphic *X. laevis* tadpoles [11,35]. It is present along the anterior one third of the small intestine [36] and is the only location where the connective tissue is abundant (Fig. 4A). As shown above and in Fig. 4B, the anterior intestine of premetamorphic *X. tropicalis* tadpoles also had the typhlosole. Interestingly, when we examined the posterior part of the small intestine in premetamorphic *X. tropicalis* tadpoles, we were surprised to find that it too had the typhlosole (Fig. 4B). In fact, we observed that the typhlosole was present along the entire length of the small intestine in premetamorphic *X. tropicalis* tadpoles as diagrammed in Fig. 4.

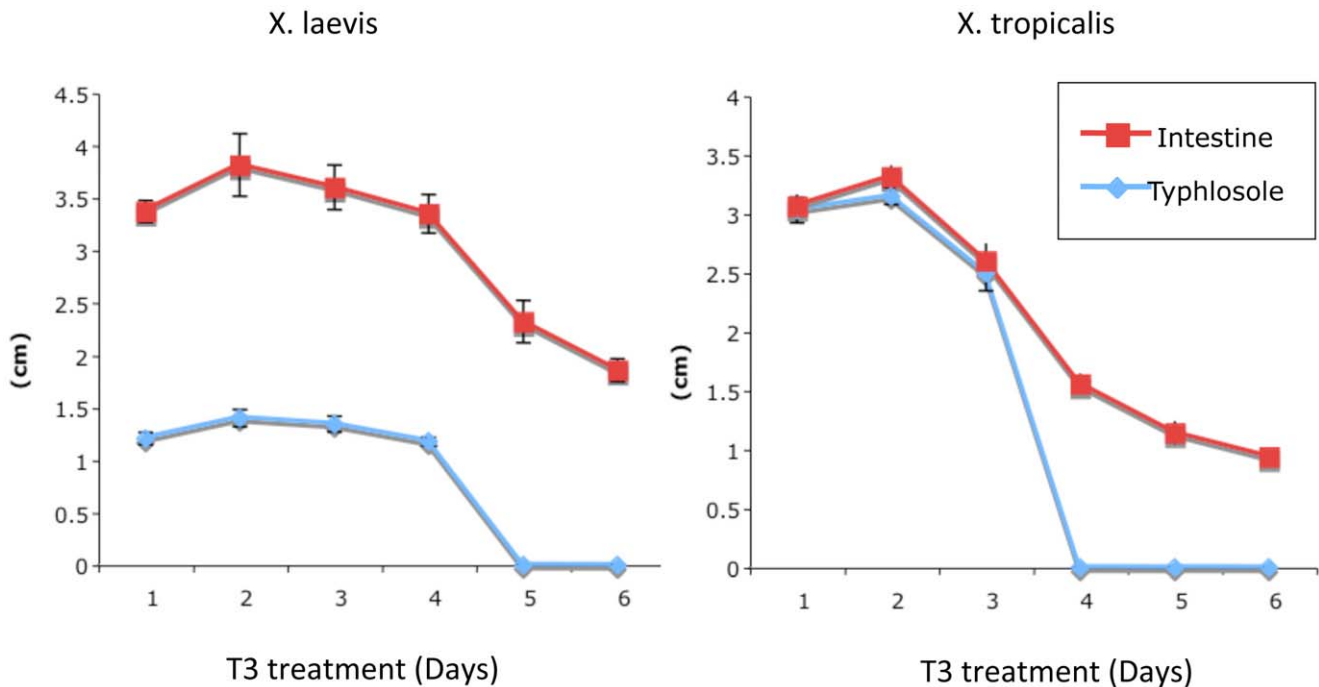


Figure 5. Reductions in the length of typhlosole and the small intestine of premetamorphic *X. laevis* and *X. tropicalis* tadpoles upon T3 treatment. Stage 54 *X. laevis* or *tropicalis* tadpoles were treated with 10 nM T3 at 18°C (*Xenopus laevis* tadpoles) or 25°C (*Xenopus tropicalis* tadpoles) for the indicated days and the intestine was isolated. The length of the typhlosole and the small intestine were measured. Note that the lengths of the intestine was reduced upon T3 treatment and that after 4–5 days of treatment, the typhlosole was no longer identifiable due to metamorphic changes in the intestine, resembling that at the climax of metamorphosis. The faster changes for *X. tropicalis* tadpoles were in part due to the higher temperature at which the animals needed to be reared. doi:10.1371/journal.pone.0047407.g005

T3 Treatment of premetamorphic Tadpoles Leads to the Reduction in the Length of Both the Small Intestine and the Typhlosole

During metamorphosis, the small intestine reduces its length by as much as 90% in *X. laevis* and the T3 treatment also causes reduction in the length of the small intestine [11]. To compare how the length of the intestine and typhlosole changes in *X. laevis* and *X. tropicalis*, stage 54 premetamorphic tadpoles of both species were treated with 10 nM T3 for 0–6 days and the length of the intestine and typhlosole was measured. As shown in Fig. 5, the length of the intestine began to decrease after 3 or 5 days of T3 treatment in *X. laevis* or *X. tropicalis* tadpoles, respectively. The length of the typhlosole was the same as the small intestine up to 3 days of T3 treatment in *X. tropicalis* and after 4 days of treatment or longer, the typhlosole was no longer identifiable as the newly formed adult epithelial folds were no longer distinguishable from the typhlosole (Fig. 3D). In *X. laevis*, the length of the typhlosole were maintained at 1/3 of the length of the small intestine up to 4 days of T3 treatment and after 5 days of T3 treatment or longer, the typhlosole was no longer identifiable. Thus, T3 treatment induced similar changes in the lengths of the typhlosole and the small intestine in both *X. laevis* and *X. tropicalis*. The only difference between the two species in response to T3 was that the changes were faster in *X. tropicalis* than in *X. laevis*. While it is unknown if the different organizations of the typhlosole in the two species contribute to their different response to T3, this might be due, at least in part, to the faster development of *X. tropicalis* tadpoles and/or the fact that *X. tropicalis* tadpoles need to be reared at higher temperature, thus responding to T3 faster.

T3 induces larval epithelial degeneration through apoptosis and gene regulation in the intestine of *X. tropicalis* tadpoles.

X. laevis larval intestinal epithelium degenerates through apoptosis during both natural and T3-induced metamorphosis, accompanied by the changes in the expression of many genes [25,26,33]. To explore if *X. tropicalis* intestinal epithelium undergoes similar changes, we performed TUNEL assay on cryosections of intestines of stage 54 tadpoles (premetamorphic tadpoles), stage 61 tadpoles (climax of metamorphosis), and stage 54 tadpoles treated with T3 for 3 days (Fig. 6A–C) or absence of TdT, the enzyme essential for TUNEL assay (Fig. 6D–F). The results showed that apoptotic cells were rarely detectable in the intestines of stage 54 tadpoles (Fig. 6A, a) but abundant in the intestinal epithelia of stage 61 tadpoles (Fig. 6B, b) and that of stage 54 tadpoles treated with T3 for 3 days (Fig. 6C, c), similar to those observed in *X. laevis*.

In addition, we examined the expression of two genes known to be regulated by T3 in *X. laevis*: stromelysin-3 (ST3), which encodes a matrix metalloproteinase and known to play a causative role during *X. laevis* intestinal epithelial apoptosis [33,37], and intestinal fatty acid binding protein (IFABP), which is a differentiation marker down-regulated at the climax of metamorphosis in the *X. laevis* intestine [38], in the intestines during *X. tropicalis* metamorphosis (Fig. 7). Just like in *X. laevis*, ST3 was up-regulated to reach the highest level while IFABP was down-regulated to the lowest level at stage 61 (Fig.7), the climax of metamorphosis when larval epithelia were undergoing apoptosis (Fig.6B &b) and adult epithelial progenitor/stem cells were developing (Fig. 2C & F).

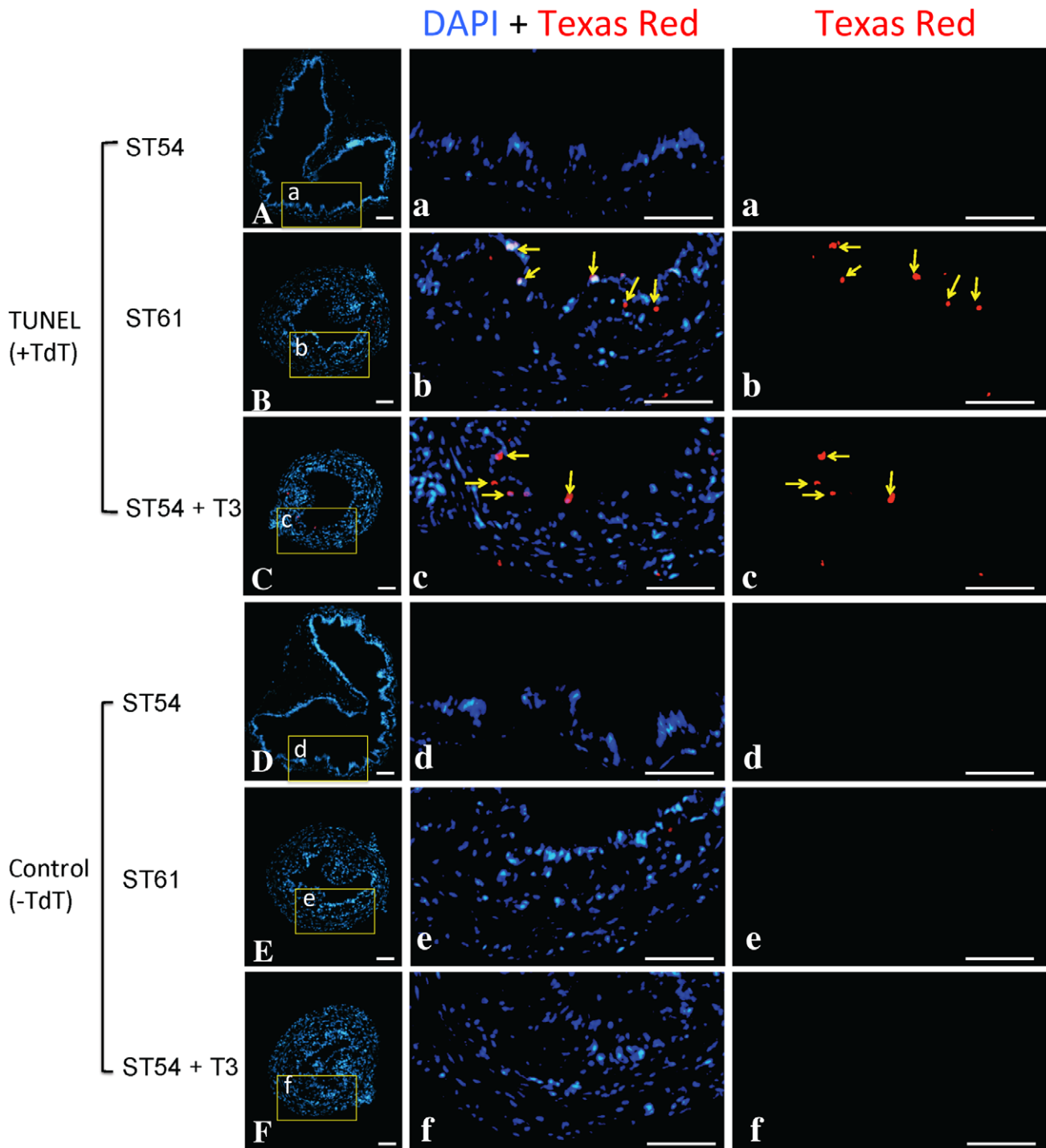


Figure 6. Intestinal epithelial apoptosis occurs during natural and T3-induced metamorphosis in *X. tropicalis*. The intestine from tadpoles at premetamorphic stage 54 (ST54), the climax of metamorphosis (ST61), or ST54 but treated with 5 nM T3 for 3 days (ST54+ T3), were analyzed by TUNEL assay (A–C) or TUNEL without the enzyme TdT as a the negative control (D–F). The biotin-dUTP labeled apoptotic cells were visualized with Texas-Red labeled Streptavidin and the nuclei were stained with DAPI. The boxed areas were shown at a higher magnification (a–f) with the apoptotic cells indicated with yellow arrows in either merged (DAPI+Texas Red) and single channel of red fluorescence (Texas-Red) images. Scale bar: 50 μ m. doi:10.1371/journal.pone.0047407.g006

Discussion and Conclusion

Adult organ-specific stem cells are critical for organ homeostasis, tissue repair and regeneration. These stem cells

are often developed during postembryonic vertebrate development, a period around birth in mammals when T3 levels are high. It has been difficult to study postembryonic development in mammals due to the nature of the in utero development.

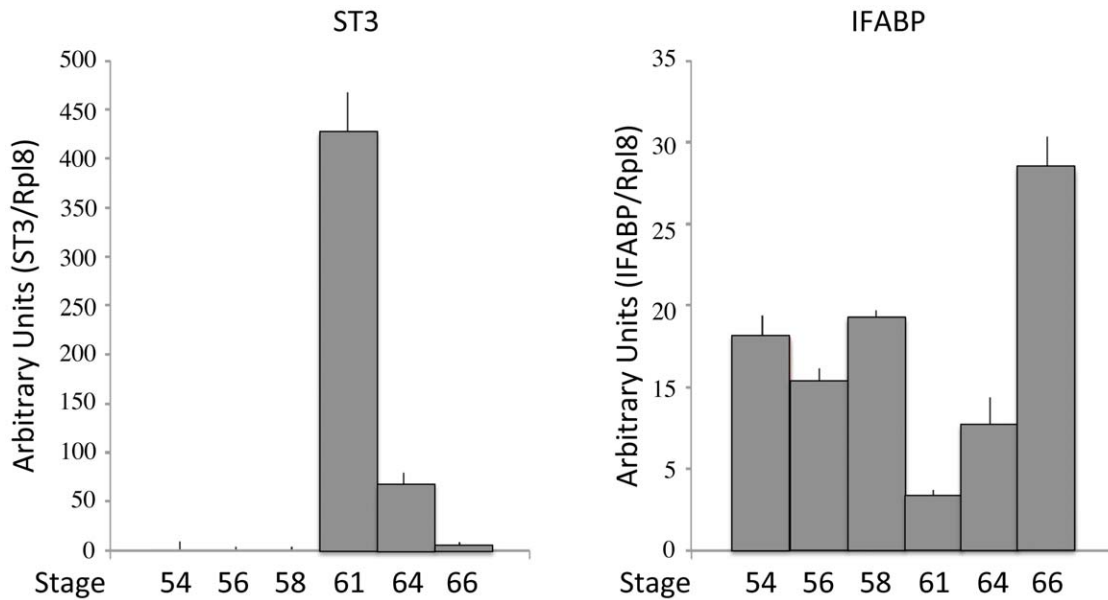


Figure 7. ST3 is upregulated while IFABP is downregulated during *X. tropicalis* intestinal metamorphosis. Total RNA were extracted from intestines of tadpoles at the indicated stages and analyzed by qRT-PCR. The expression levels for ST3 or IFABP were normalized against the control gene rpl8 and represented as means with with standard deviations in arbitrary units. doi:10.1371/journal.pone.0047407.g007

Anuran metamorphosis resembles the postembryonic development in mammals but occur independent of parental influence. It is totally dependent on T3 and can be easily manipulated by controlling the availability of T3 in the tadpoles. Studies on *X. laevis* metamorphosis have revealed extensive molecular mechanistic details on the regulation of this process by T3, including the role of T3 receptors and many genes that are regulated by T3 during metamorphosis [2,39]. Of many changes during metamorphosis, intestinal remodeling offers a unique opportunity to study the development of the adult organ-specific stem cells [2,40]. In *X. laevis*, this process involves the degeneration of the larval epithelium through apoptosis or programmed cell death [11]. Concurrently, the adult epithelial stem or progenitor cells develop de novo through dedifferentiation of some cells in the larval epithelium, followed by the proliferation and differentiation to form a multiply folded adult epithelium surrounded by elaborate connective tissue and muscles, resembling that in adult mammals. Interesting, this transition appears to be conserved in mammals as mouse adult intestinal stem cells are also formed during postembryonic development in a process that involves similar regulation by T3 [40–43]. Thus *X. laevis* intestinal remodeling offers an opportunity to manipulate and study adult stem cell development in vertebrates. On the other hand, its lengthy developmental cycle and its yet-to-be sequenced pseudo-tetraploid genome make it difficult to study gene function and genome-wide analyses in *X. laevis*. Here our studies suggest that intestinal remodeling in *X. tropicalis* resembles that in *X. laevis* and thus offers an alternative model for studying intestinal development without the aforementioned drawbacks.

X. tropicalis is highly related to *X. laevis* but has a simple diploid genome that has been sequenced [21,22]. It also has a shorter life cycle, requiring only half the time to reach sexual maturity from fertilization than that in *X. laevis*. This advantageous shorter life cycle coupled with its smaller body size makes the *X. tropicalis* a superior model for genetic and genome-wide functional studies. Importantly, our analyses here have shown that intestinal

metamorphosis in *X. tropicalis* resembles that in *X. laevis*. Furthermore, our present work and limited earlier studies on T3 receptor (TR) function and regulation of T3 target genes have also demonstrated conserved function and mechanisms for TR during *X. tropicalis* metamorphosis [28–30,44,45]. Thus, one can combine the advantages of the *X. tropicalis* model with the wealth of cellular and molecular knowledge gained from studies on *X. laevis* intestinal metamorphosis in the past few decades to dissect the molecular pathways governing adult stem cell development during metamorphosis.

While the metamorphic changes in the intestine are similar between *X. laevis* and *X. tropicalis*, a major structure difference was observed between these two related species. A distinct feature of the premetamorphic *X. laevis* tadpole intestine is the presence of the typhlosole in the anterior 1/3 of the small intestine [36]. This is where the connective tissue is abundant in the tadpole intestine prior to metamorphosis. During metamorphosis, as adult epithelial folding occurs with the development of the connective tissue and muscles around the climax of metamorphosis (around stage 62), the typhlosole is no longer observable or distinguishable from the many newly formed epithelial folds. While the physiological significance of the typhlosole in premetamorphic tadpoles is unclear, in vitro organ culture studies suggest that it may play a role in the development of the adult intestinal stem cells. When fragments of the anterior small intestine with typhlosole were isolated from premetamorphic *X. laevis* tadpoles and cultured in vitro with T3, intestinal metamorphosis, including apoptosis of larval epithelial cells and development of the adult epithelium, took place [46]. On the other hand, when fragments of the small intestine lacking typhlosole were isolated from premetamorphic *X. laevis* tadpoles and cultured in vitro with T3, only larval epithelial degeneration was observed [47], suggesting that the connective tissue rich typhlosole is critical for adult epithelium development. Consistently, we have recently shown that expression of a constitutive active TR in the larval epithelium alone (resembling T3 treatment of only the epithelium) in typhlosole-containing

organ cultures led to larval epithelial cell death and adult epithelial progenitor/precursor formation, however, such cells failed to express intestinal stem cell markers or develop into differentiated adult epithelium [16]. In contrast, when the constitutive active TR was expressed in all tissues of the intestinal fragment, which contained the typhlosole, in organ cultures, larval cell death, adult stem cell formation, and eventually adult epithelium development took place. These findings suggest that T3 action in the larval epithelium alone can induce the formation of adult progenitor/precursor cells while T3 action in the non-epithelium, most likely the connective tissue underlying the epithelium, is also required for these progenitors/precursors to become stem cells, presumably by forming or enabling the formation of the stem cell

niche. Thus, it is interesting to speculate that the presence of the connective tissue-rich typhlosole along the entire length of the small intestine may facilitate the concurrent development of adult intestinal stem cells throughout the intestine during metamorphosis. It would be interesting to test this possibility in the future by using organ culture of intestine isolated from anterior as well as posterior small intestine of *X. tropicalis* premetamorphic tadpoles.

Author Contributions

Conceived and designed the experiments: JS LF KM YS. Performed the experiments: JS LF KM. Analyzed the data: JS LF. Wrote the paper: LF YS.

References

1. Tata JR (1993) Gene expression during metamorphosis: an ideal model for post-embryonic development. *Bioessays* 15: 239–48.
2. Shi Y B, Hasebe T, Fu L, Fujimoto K, Ishizuya-Oka A (2011) The development of the adult intestinal stem cells: Insights from studies on thyroid hormone-dependent amphibian metamorphosis. *Cell Biosci* 1: 30.
3. Shi Y B (2011) The right journal for the right time - *Cell & Bioscience*. *Cell Biosci* 1: 1.
4. Yuan J, Nguyen C K, Liu X, Kanelloupolou C, Muljo S A (2012) Lin28b reprograms adult bone marrow hematopoietic progenitors to mediate fetal-like lymphopoiesis. *Science* 335: 1195–200.
5. MacDonald W C, Trier J S, Everett N B (1964) Cell proliferation and migration in the stomach, duodenum, and rectum of man: Radioautographic studies. *Gastroenterology* 46: 405–17.
6. Toner P G, Carr K E, Wyburn G M. (1971) *The Digestive System: An Ultrastructural Atlas and Review*. Butterworth, London.
7. van der Flier L G, Clevers H (2009) Stem Cells, Self-Renewal, and Differentiation in the Intestinal Epithelium. *Annu. Rev. Physiol.* 71: 241–60.
8. McAvoy J W, Dixon K E (1977) Cell proliferation and renewal in the small intestinal epithelium of metamorphosing and adult *Xenopus laevis*. *J. Exp. Zool.* 202: 129–138.
9. Al-Nafussi A I, Wright N A (1982) Cell kinetics in the mouse small intestine during immediate postnatal life. *Virchows Arch B Cell Pathol Incl Mol Pathol* 40: 51–62.
10. Schmidt G H, Winton D J, Ponder B A (1988) Development of the pattern of cell renewal in the crypt-villus unit of chimaeric mouse small intestine. *Development* 103: 785–90.
11. Shi Y-B, Ishizuya-Oka A (1996) Biphasic intestinal development in amphibians: Embryogenesis and remodeling during metamorphosis. *Current Topics in Develop. Biol.* 32: 205–235.
12. Shi Y-B. (1999) *Amphibian Metamorphosis: From morphology to molecular biology*. John Wiley & Sons, Inc., New York.
13. Ishizuya-Oka A, Hasebe T, Buchholz D R, Kajita M, Fu L, Shi Y B (2009) Origin of the adult intestinal stem cells induced by thyroid hormone in *Xenopus laevis*. *Faseb J* 23: 2568–75.
14. Schreiber A M, Cai L, Brown D D (2005) Remodeling of the intestine during metamorphosis of *Xenopus laevis*. *Proc Natl Acad Sci U S A* 102: 3720–5.
15. Amano T, Noro N, Kawabata H, Kobayashi Y, Yoshizato K (1998) Metamorphosis-associated and region-specific expression of calbindin gene in the posterior intestinal epithelium of *Xenopus laevis* larva. *Dev Growth Differ* 40: 177–88.
16. Hasebe T, Buchholz D R, Shi Y B, Ishizuya-Oka A (2011) Epithelial-connective tissue interactions induced by thyroid hormone receptor are essential for adult stem cell development in the *Xenopus laevis* intestine. *Stem Cells* 29: 154–61.
17. Amano T, Yoshizato K (1998) Isolation of genes involved in intestinal remodeling during anuran metamorphosis. *Wound Repair Regen* 6: 302–313.
18. Heimeier R A, Das B, Buchholz D R, Fiorentino M, Shi Y B (2010) Studies on *Xenopus laevis* intestine reveal biological pathways underlying vertebrate gut adaptation from embryo to adult. *Genome Biol* 11: R55.
19. Buchholz D R, Heimeier R A, Das B, Washington T, Shi Y-B (2007) Pairing morphology with gene expression in thyroid hormone-induced intestinal remodeling and identification of a core set of TH-induced genes across tadpole tissues. *Dev. Biol.* 303: 576–590.
20. Shi Y-B, Brown D D (1993) The earliest changes in gene expression in tadpole intestine induced by thyroid hormone. *J. Biol. Chem.* 268: 20312–20317.
21. Amaya E, Offield M F, Grainger R M (1998) Frog genetics: *Xenopus tropicalis* jumps into the future. *Trends Genet* 14: 253–5.
22. Hellsten U, Harland R M, Gilchrist M J, Hendrix D, Jurka J, et al. (2010) The genome of the Western clawed frog *Xenopus tropicalis*. *Science* 328: 633–6.
23. Puzianowska-Kuznicka M, Damjanovski S, Shi Y-B (1997) Both thyroid Hormone and 9-cis Retinoic Acid receptors are Required to Efficiently mediate the Effects of Thyroid Hormone on Embryonic Development and Specific Gene Regulation in *Xenopus laevis*. *Mol. And Cell Biol.* 17: 4738–4749.
24. Shi Y-B (2009) Dual functions of thyroid hormone receptors in vertebrate development: the roles of histone-modifying cofactor complexes. *Thyroid* 19: 987–999.
25. Buchholz D R, Tomita A, Fu L, Paul B D, Shi Y-B (2004) Transgenic analysis reveals that thyroid hormone receptor is sufficient to mediate the thyroid hormone signal in frog metamorphosis. *Mol. Cell. Biol.* 24: 9026–9037.
26. Buchholz D R, Hsia V S-C, Fu L, Shi Y-B (2003) A dominant negative thyroid hormone receptor blocks amphibian metamorphosis by retaining corepressors at target genes. *Mol. Cell. Biol.* 23: 6750–6758.
27. Schreiber A M, Das B, Huang H, Marsh-Armstrong N, Brown D D (2001) Diverse developmental programs of *Xenopus laevis* metamorphosis are inhibited by a dominant negative thyroid hormone receptor. *PNAS* 98: 10739–10744.
28. Wang X, Matsuda H, Shi Y-B (2008) Developmental regulation and function of thyroid hormone receptors and 9-cis retinoic acid receptors during *Xenopus tropicalis* metamorphosis. *Endocrinology* 149: 5610–5618.
29. Bilesimo P, Jolivet P, Alfama G, Buisine N, Le Mevel S, et al. (2011) Specific Histone Lysine 4 Methylation Patterns Define TR-Binding Capacity and Differentiate Direct T3 Responses. *Mol Endocrinol* 25: 225–237.
30. Matsuura K, Fujimoto K, Fu L, Shi Y-B (2012) Liganded thyroid hormone receptor induces nucleosome removal and histone modifications to activate transcription during larval intestinal cell death and adult stem cell development. *Endocrinology* 153: 961–972.
31. Ishizuya-Oka A, Ueda S, Damjanovski S, Li Q, Liang V C, Shi Y-B (1997) Anteroposterior gradient of epithelial transformation during amphibian intestinal remodeling: immunohistochemical detection of intestinal fatty acid-binding protein. *Dev Biol* 192: 149–61.
32. Damjanovski S, Ishizuya-Oka A, Shi Y B (1999) Spatial and temporal regulation of collagenases-3, -4, and stromelysin - 3 implicates distinct functions in apoptosis and tissue remodeling during frog metamorphosis. *Cell Res* 9: 91–105.
33. Fu L, Ishizuya-Oka A, Buchholz D R, Amano T, Matsuda H, Shi Y B (2005) A causative role of stromelysin-3 in extracellular matrix remodeling and epithelial apoptosis during intestinal metamorphosis in *Xenopus laevis*. *J Biol Chem* 280: 27856–65.
34. Shi Y-B, Liang V C-T (1994) Cloning and characterization of the ribosomal protein L8 gene from *Xenopus laevis*. *Biochimica et Biophysica Acta.* 1217: 227–228.
35. Ishizuya-Oka A, Shimozawa A (1987) Development of the connective tissue in the digestive tract of the larval and metamorphosing *Xenopus laevis*. *Anat Anz* 164: 81–93.
36. Marshall J A, Dixon K E (1978) Cell specialization in the epithelium of the small intestine of feeding *Xenopus laevis* tadpoles. *J Anat* 126: 133–44.
37. Fu L, Tomita A, Wang H, Buchholz D R, Shi Y-B (2006) Transcriptional regulation of the *Xenopus laevis* stromelysin-3 gene by thyroid hormone is mediated by a DNA element in the first intron. *J. Biol. Chem.* 281: 16870–8.
38. Shi Y-B, Hayes W P (1994) Thyroid hormone-dependent regulation of the intestinal fatty acid-binding protein gene during amphibian metamorphosis. *Dev. Biol.* 161: 48–58.
39. Shi Y-B, Ishizuya-Oka A (2001) Thyroid hormone regulation of apoptotic tissue remodeling: Implications from molecular analysis of amphibian metamorphosis. *Progress in Nucleic Acid Research and Molecular Biology* 65: 53–100.
40. Ishizuya-Oka A, Shi Y B (2011) Evolutionary insights into postembryonic development of adult intestinal stem cells. *Cell Biosci* 1: 37.
41. Matsuda H, Shi Y B (2010) An essential and evolutionarily conserved role of protein arginine methyltransferase 1 for adult intestinal stem cells during postembryonic development. *Stem Cells* 28: 2073–83.
42. Muncan V, Heijmans J, Krasinski S D, Buller N V, Wildenberg M E, et al. (2011) Blimp1 regulates the transition of neonatal to adult intestinal epithelium. *Nat Commun* 2: 452.
43. Harper J, Mould A, Andrews R M, Bikoff E K, Robertson E J (2011) The transcriptional repressor Blimp1/Prdm1 regulates postnatal reprogramming of intestinal enterocytes. *Proc Natl Acad Sci U S A* 108: 10585–90.

44. Matsuura K, Fujimoto K, Das B, Fu L, Lu C D, Shi Y B (2012) Histone H3K79 methyltransferase Dot1L is directly activated by thyroid hormone receptor during *Xenopus* metamorphosis. *Cell Biosci* 2: 25.
45. Fujimoto K, Matsuura K, Das B, Fu L, Shi Y B (2012) Direct Activation of *Xenopus* Iodotyrosine Deiodinase by Thyroid Hormone Receptor in the Remodeling Intestine during Amphibian Metamorphosis. *Endocrinology*.
46. Ishizuya-Oka A, Shimozawa A (1991) Induction of metamorphosis by thyroid hormone in anuran small intestine cultured organotypically in vitro. *In Vitro Cell Dev Biol* 27A: 853–7.
47. Ishizuya-Oka A, Shimozawa A (1992) Connective tissue is involved in adult epithelial development of the small intestine during anuran metamorphosis in vitro. *Roux's Arch. Dev. Biol* 201: 322–329.