



Since January 2020 Elsevier has created a COVID-19 resource centre with free information in English and Mandarin on the novel coronavirus COVID-19. The COVID-19 resource centre is hosted on Elsevier Connect, the company's public news and information website.

Elsevier hereby grants permission to make all its COVID-19-related research that is available on the COVID-19 resource centre - including this research content - immediately available in PubMed Central and other publicly funded repositories, such as the WHO COVID database with rights for unrestricted research re-use and analyses in any form or by any means with acknowledgement of the original source. These permissions are granted for free by Elsevier for as long as the COVID-19 resource centre remains active.



The use of infrared thermography as a non-invasive method for fever detection in sheep infected with bluetongue virus



Ana C. Pérez de Diego^{a,*}, Pedro J. Sánchez-Cordón^b, Miriam Pedrera^b, Beatriz Martínez-López^{a,c}, José C. Gómez-Villamandos^b, José M. Sánchez-Vizcaíno^a

^a VISA VET Center and Animal Health Department, Veterinary School, University Complutense of Madrid, Avenida Puerta de Hierro s/n, 28040 Madrid, Spain

^b Department of Comparative Pathology, Veterinary Faculty, University of Córdoba-Agrifood Excellence International Campus (ceiA3), Edificio Sanidad Animal, Campus de Rabanales, 14014 Córdoba, Spain

^c IREC (CSIC-UCLM-JCCM), Ronda de Toledo s/n, 13005 Ciudad Real, Spain

ARTICLE INFO

Article history:

Accepted 9 July 2013

Keywords:

Bluetongue
Fever detection
Infrared thermography
Sheep

ABSTRACT

Fever, which is closely linked to viraemia, is considered to be both the main and the earliest clinical sign in sheep infected with bluetongue virus (BTV). The aim of this study was to evaluate the potential use of infrared thermography (IRT) for early detection of fever in sheep experimentally infected with bluetongue virus serotype 1 (BTV-1) and serotype 8 (BTV-8). This would reduce animal stress during experimental assays and assist in the development of a screening method for the identification of fever in animals suspected of being infected with BTV.

Rectal and infrared eye temperatures were collected before and after BTV inoculation. The two temperature measures were positively correlated ($r = 0.504$, $P < 0.05$). The highest correlation between rectal and infrared temperatures was observed when temperatures were above physiological levels. IRT discriminated between febrile and non-febrile sheep with a sensitivity of 85% and specificity of 97%. The results showed that eye temperature measured using IRT was a useful non-invasive method for the assessment of fever in sheep infected with BTV under experimental conditions. Further research is required to evaluate the use of IRT under field conditions to identify potentially infected animals in bluetongue surveillance programmes.

© 2013 Elsevier Ltd. All rights reserved.

Introduction

Infrared thermography (IRT) is a temperature measurement tool based on the ability of all objects to emit characteristic infrared radiation as a function of their temperature (Kastberger and Stachl, 2003). This radiation is proportional to the surface temperature of the body (Bitar et al., 2009), and is evaluated using a thermographic camera, which produces images with different colour patterns depending on the temperature of the imaged objects. The temperature values in the images are strongly related to the emissivity of the object, which is defined as the relative ability of a surface to emit and absorb radiation (Rodríguez-Prieto et al., 2013). As up to 60% of heat loss of an animal may occur in the infrared range, radiated heat loss could be used as an early indicator of fever in pathological conditions (Schaefer et al., 2007).

Since the late 1950s, IRT applications in human medicine have been varied, with one of the first uses being the detection of temperature increasing in the skin over a breast tumour (Jiang et al.,

2005). More recently, during the 2003 severe acute respiratory syndrome (SARS) outbreaks, thermal scanners were used in airports to detect suspected febrile cases (Chiu et al., 2005). In veterinary sciences, IRT has been used as a detection method for lameness in horses (Eddy et al., 2001) and cattle (Nikkhah et al., 2005), as well as for the evaluation of dermatological lesions in wild animals (Arenas et al., 2002). Other studies have used IRT for early detection of different infectious diseases in livestock (Schaefer et al., 2007; Rainwater-Lovett et al., 2009).

Ideally, collection of temperature data for fever detection should be rapid and non-invasive (Ng et al., 2004), particularly in veterinary practice where reduction in the stress caused by capture and handling is important. The ability of the IRT to detect febrile animals with minimal handling suggests its potential as a useful tool in both veterinary preventive medicine and experimental diseases models (Schaefer et al., 2004, 2012; Rainwater-Lovett et al., 2009).

Bluetongue (BT) is a non-contagious, vector-borne disease of domestic and wild ruminants. It is caused by an orbivirus belonging to the family Reoviridae; so far 26 different serotypes have been identified (Hofmann et al., 2008; Maan et al., 2011). The

* Corresponding author. Tel.: +34 913943702.

E-mail address: anacristina@sanidadanimal.info (A.C. Pérez de Diego).

disease is of economic importance due to losses associated with mortality and morbidity, veterinary treatment, implementation of control and eradication programmes and commercial restrictions in infected areas (Velthuis et al., 2010). The severity of BT varies according to species, breed and bluetongue virus (BTV) serotype. Sheep have been considered the most severely affected livestock species and typical clinical symptoms include apathy, generalized subcutaneous oedema (mainly observed on the head, intermandibular area and neck), nasal discharge, oral lesions, cyanotic tongue, dyspnoea and lameness (Schwartz-Cornil et al., 2008; Maclachlan et al., 2009). However, fever is the main clinical sign of BT in sheep and the earliest to be detected (Hamblin et al., 1998; Worwa et al., 2010; Perez de Diego et al., 2011).

Since BT is classified as a notifiable disease by the World Organisation for Animal Health (OIE), and is being considered as a re-emerging disease (Maclachlan and Guthrie, 2010), many surveillance and control programmes have been implemented worldwide for early detection and control of the disease. These surveillance programmes require significant economic and human resources and can stress the animals that are being monitored (i.e. sentinel or suspect animals). As a consequence, the development of a rapid, non-invasive and low stress method for detecting suspect cases is required. IRT provides a potential tool for this purpose.

The aim of this study was to evaluate the use of IRT for early detection of fever in sheep experimentally infected with BTV serotype 1 (BTV-1) and serotype 8 (BTV-8), in order to reduce animal stress during experimental assays as well as to develop a screening method for the identification of fever in animals suspected of having BT.

Materials and methods

Animals, virus and experimental design

All procedures were approved by the Animal Experimental Committees from Córdoba University and the Complutense University of Madrid.

A total of 19 male Merino sheep, 9 months of age, were obtained from a flock declared free of brucellosis, paratuberculosis and maedi-visna according to the Spanish surveillance programmes. During the experiment sheep were housed in the Biosafety Level 3 containment of the Animal Health Surveillance Centre (VISA-VET, Complutense University of Madrid, Spain), which is a temperature-controlled facility (20–21 °C).

The sheep were given an adjustment period of 7 days before the experiment started. Prior to inoculation, all animals were treated with anthelmintics and tested negative for BTV RNA and BTV antibodies by real-time RT-qPCR (Toussaint et al., 2007) and a double recognition ELISA (INGEZIM BTV DR 12.BTV.K0, Ingenasa), respectively. The sheep were then divided into three groups and inoculated as follows: (1) BTV-1 group comprised eight sheep (numbered from S1.1 to S1.8) that each received a subcutaneous (SC) inoculation in the axilla of 2 mL containing $10^{6.0}$ tissue culture infective dose 50% (TCID₅₀) per mL of BTV-1/AGL2006/01 strain; (2) BTV-8 group comprised eight sheep (S8.1–S8.8) that were each injected SC with 2 mL containing $10^{6.0}$ TCID₅₀/mL BTV-8/BEL2006/01 strain; (3) the Control group contained three sheep (C1, C2, and C3) which were each injected SC with 2 mL virus dilution medium (Dubelco's Modified Eagle's Medium, Sigma–Aldrich).

Temperature collection

The day of inoculation was defined as day 0. Prior to virus inoculation (from day –3 to day 0), rectal temperatures were monitored with a digital thermometer (Catalogue number 291110, Kruuse). At the same time, infrared images were obtained with an infrared thermographic camera (ThermaCam E45, FLIR). After inoculation, alongside a clinical examination, rectal temperatures and infrared images were taken daily throughout the study period. Images were collected at the same hour every morning after the rectal temperatures had been taken and before the animal rooms were cleaned so as to avoid temperature variations induced by the presence of standing water.

The camera was placed 0.5–1 m from the head of the animals. The thermal images were analysed by the ThermaCam Quick View 1.0 and ThermaCam Quick Report 1.0 software. The thermographic temperature used in this study was the maximal eye and surrounding skin area infrared temperature, which was defined as the highest temperature identified by the software utilities on the orbital surface (Schaefer et al., 2007). Since environmental temperature and emissivity could influence the temperature values obtained by IRT, these factors were adjusted in each

thermal image. The emissivity of the eye surface was estimated as 0.98 (Girardin et al., 1999), while the environmental temperature was set at 20 °C. In total, 208 rectal temperatures and 208 IRT pictures were collected (Table 1).

Blood sample collection

Blood samples were taken from all sheep from the second day post-inoculation (dpi) onwards and used to confirm the presence of BTV by real-time RT-qPCR (Toussaint et al., 2007). Infected sheep were sedated and euthanased in batches of four at 3, 6, 12 and 15 dpi. The control group sheep were euthanased at the end of the experiment.

Statistical analysis

Data were analysed using the statistical analysis programs GraphPad InStat version 3.0 (GraphPad Software.), SPSS 19 (IBM) and Win Episcope 2.0. The sheep in the uninfected control group showed no significant changes in rectal temperature throughout study (range 39.3–39.6 °C), so their data were not included in the statistical analysis.

Rectal and infrared temperatures were not normally distributed (Kolmogorov–Smirnov test; $P < 0.001$), so Spearman's rank correlation coefficient was used to determine the relationship between rectal and infrared temperatures. Taking into account that the temperature data used were repeated measures, the correlation test was performed using just 16 pairs of data corresponding to the means of temperatures from each animal. Wilcoxon signed-rank test was used to assess whether there were differences between the median values of rectal and infrared temperatures.

Previous studies have reported that radiated temperature is generally lower than conductive core temperature (Schaefer et al., 2007), so a cut-off value for the identification fever using IRT was identified by determining the mean difference between the rectal and infrared temperatures and then subtracting this value from 40 °C, which is the rectal temperature considered as fever (Hamblin et al., 1998; Worwa et al., 2010). The cut off value was then used to create a contingency table for a kappa (κ) analysis to assess the concordance between both techniques as well as to determine the sensitivity and specificity of IRT.

Results

Confirmation of infection status

Viral RNA was detected by real-time RT-qPCR from 2 dpi in sheep inoculated with BTV-8 and from 3 dpi in sheep inoculated with BTV-1. Most animals were positive from 4 dpi onwards. In addition, moderate clinical signs and lesions characteristic of BT (conjunctivitis, ocular discharge, skin congestion in peri-orbital areas and nostrils, serous nasal discharge and crusts in nasal mucosa) were also observed. Neither viraemia nor clinical signs were detected in uninfected control sheep.

Analysis of rectal and thermographic temperatures

Differences in the thermal images obtained on the orbital surface prior to and after virus challenge were observed (Fig. 1). These changes were associated with a rectal temperature increase (Fig. 2). A positive correlation ($P < 0.05$) between rectal and infrared temperatures was obtained ($r = 0.504$) when data were analysed by Spearman rank test.

Cut off value, kappa coefficient, sensitivity and specificity

Infrared temperatures were lower than rectal temperatures ($P < 0.01$). The mean difference between the two measures was $1.46 \text{ °C} \pm 0.05 \text{ °C}$ ($P < 0.005$). Thus, a rectal temperature value of 40 °C was equivalent to 38.54 °C using IRT on the eye surface.

The cut off value (38.54 °C) was used to determine the true positive and true negative cases, as well as the false positive and false negative cases (Table 2). The 11 incorrect diagnoses involved seven animals, four in the BTV-1 group (S1.2, S1.3, S1.5, S1.6) and three in the BTV-8 group (S8.5, S8.6, S8.8). Four of the 11 incorrect diagnoses were identified before virus inoculation and seven after virus

Table 1

Sheep identification, inoculation of BTV serotypes (BTV-1 and BTV-8) and individual temperature collection carried out during the experimental infection.

Sheep	BTV serotype inoculated	Number of temperature observations pre-inoculation	Number of temperature observations post-inoculation	Total number of temperature observations
S1.1	BTV1	4	3	7
S1.2	BTV1	4	3	7
S1.3	BTV1	4	6	10
S1.4	BTV1	4	6	10
S1.5	BTV1	4	12	16
S1.6	BTV1	4	12	16
S1.7	BTV1	4	15	19
S1.8	BTV1	4	15	19
S8.1	BTV8	4	3	7
S8.2	BTV8	4	3	7
S8.3	BTV8	4	6	10
S8.4	BTV8	4	6	10
S8.5	BTV8	4	12	16
S8.6	BTV8	4	12	16
S8.7	BTV8	4	15	19
S8.8	BTV8	4	15	19

inoculation. Just one sheep (S8.5) displayed false positive and false negative results.

A significant positive correlation ($r = 0.71$; $P < 0.05$) in the true positive cases (rectal temperature $>40^\circ\text{C}$, and infrared temperature $>38.54^\circ\text{C}$) was also observed, while the correlation in true negatives cases was lower ($r = 0.17$; $P < 0.05$).

The κ coefficient was 0.831, reflecting an excellent concordance between rectal and infrared temperatures (Altman, 1991), IRT

detected fever (defined as a rectal temperature $>40^\circ\text{C}$) with a sensitivity of 85% (70.8–94.4%) and a specificity of 97% (93.1–99%).

Discussion

This study showed that there is a significant correlation between rectal and infrared temperatures of the eye region from sheep experimentally infected with BTV, supporting the use of IRT as a tool to detect fever in the early stages of BT. To the best of our knowledge, this work represents the first report on IRT performance as screening tool for fever detection in BTV-infected animals.

Fever has been considered to be the main and earliest clinical sign detected in previous experimental BTV infection in sheep and a clear association between increased temperature and viraemia has been demonstrated (Foster et al., 1991; Worwa et al., 2010). Thus increases in temperature represent a relevant determinant in BTV epidemiology and diagnostics, and the ability of IRT to detect fever, as shown in this study, indicates that IRT could be a useful and complementary tool for early detection of suspected BT cases and for identifying animals to sample in a control programme.

The impact that different variables, such as species, breed, environmental factors, dose of virus, serotype or route of inoculation (Maclachlan et al., 2009), might have on the development of BT was minimized in the course of this experiment which was carried out under controlled conditions within containment facilities. Consequently, the temperature changes we observed could be attributed only to BTV. Under field conditions, other variables may reduce the specificity and sensitivity of IRT.

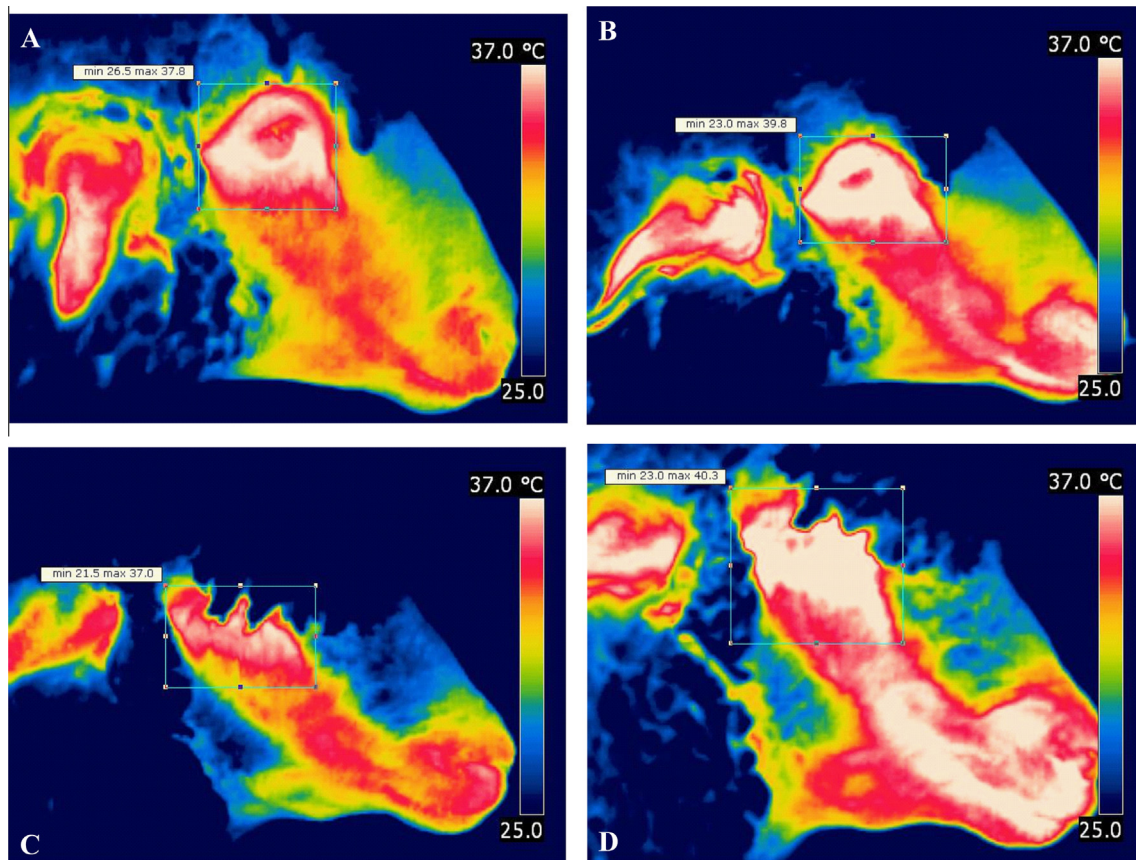


Fig. 1. Infrared images of a sheep (S1.8) before inoculation with BTV-1 (A) and 7 days post-inoculation (B). Infrared images of a sheep (S8.4) previously to challenge with BTV-8 (C) and 6 days after inoculation (D). Note the lower temperatures (blue) in the animals without fever vs. the higher temperatures (white–red) in febrile sheep.

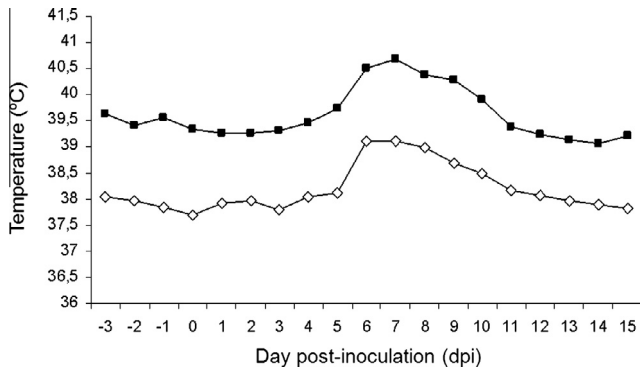


Fig. 2. Evolution of rectal (■) and IRT temperatures (◇) in sheep inoculated with BTV-1 and 8. Day 0 corresponds to inoculation day. Rectal temperatures >40 °C and IRT temperatures >38.54 °C were indicative of fever.

Table 2

Categorization of the total 208 measures according to the cut-off.

Category of diagnosis	Number of measures
True positive	35
True negative	162
False positive	6
False negative	5

Nevertheless, we found that IRT was a fast and non-invasive method for fever detection in sheep and could greatly reduce the stress caused by the capture, management and manipulation of animals during clinical examination. The influence of stress on different biological parameters and biomarkers (such as cytokines, acute phase proteins or hormones), associated with inflammatory and immunological responses (Matalka, 2003; Priyadarshini and Aich, 2012), will be minimized by using IRT during experimental infections.

Possible uses of IRT could be in the continuous monitoring of temperatures in sentinel animals included in surveillance programmes. Early detection of fever would allow sampling for BTV during an outbreak to focus on specific animals. Implemented in this way the use of IRT could result in a decreased number of clinical samples submitted for diagnostic confirmation, easing the strain on veterinarians in the field and on laboratories during BT outbreaks and saving resources, time, effort and costs. This is consistent with the views expressed by Rainwater-Lovett et al. (2009) who evaluated the use of IRT in detecting foot-and-mouth disease.

However, environmental factors may affect temperature collection by IRT and it will be necessary to determine their influence in future research. Studies on fever detection in cattle by IRT should also be performed as, traditionally, cattle have been used as sentinel species in BT surveillance programmes due to their important role in the epidemiology of the disease (Dal Pozzo et al., 2009).

IRT has been used to detect the effects of painful, stressful and emotionally disturbing stimuli on eye temperature in several species (Pavlidis et al., 2002; Stewart et al., 2007). In agreement with previous studies (Stubsjoen et al., 2009) due to the absence of wool, the eye and surrounding skin area, appeared to be the anatomical location of choice for the measurement of temperature by IRT during our experiment. Indeed, the highest face temperature is often found in the eye, which is believed to reflect internal body temperature (Kastberger and Stachl, 2003). In contrast with other areas free of wool, such as the hoof (which could also be influenced by different environmental factors such as soil moisture, presence of straw, and mud), the eye region presents better accessibility, and is easier for the interpretation of changes in temperature.

Due to experimental and ethical restrictions, a limited number of animals were included in this study and this probably influenced the moderate values of correlation we obtained. However, a significant positive correlation between the true positive cases (rectal temperature >40 °C) and their equivalent IRT data (infrared temperature >38.54 °C) was observed, while the correlation between true negatives cases was much lower. Thus, the highest correlation between rectal and infrared temperatures was found when temperatures above the physiological range were presented, suggesting that both methods were of similar effectiveness when fever was present.

Conclusions

A correlation between rectal and infrared temperatures scanned in the eye region of sheep experimentally infected with BTV has been demonstrated. The study represents the first step in the validation of IRT as a method for measuring fever, which is considered to be the main and earliest clinical sign in sheep infected with BTV and is closely related to the viraemia that plays a relevant role in BTV epidemiology and diagnosis. Eye temperature measured using IRT may be a useful non-invasive method for the assessment of fever in sheep infected with BTV under experimental and field conditions, reducing the animal stress and, in consequence, its influence on different biological parameters involved in inflammatory or immunological responses. Further research is needed to establish better validation in field conditions as well as to improve correlation, specificity and sensitivity.

Conflict of interest statement

None of the authors has any financial or personal relationships that could inappropriately influence or bias the content of the paper.

Acknowledgements

This work was funded by a project grant from the Spanish Ministry of Science and Innovation (AGL2009-13174-C02-01), and by the European project Orbivac (KBBE-2009-1-3-02). A.C. Pérez de Diego holds a scholarship of the FPU Programme (Ministry of Education and Science, Spain). P.J. Sánchez-Cordón holds a contract of the Ramón y Cajal Programme (Ministry of Science and Innovation, Spain). B. Martínez-López currently holds a Juan de la Cierva Contract (JCI-2011-10724; Ministry of Science and Innovation, Spain). The authors thank S. Cano and A.I. de las Heras for their scientific consideration during the production of this manuscript. The authors also thank VISAVET workers and P. del Carmen for technical assistance and dedication during the experimental study.

References

- Altman, D., 1991. *Practical Statistics for Medical Research*. Chapman and Hall, Oxford.
- Arenas, A.J., Gomez, F., Salas, R., Carrasco, P., Borge, C., Maldonado, A., O'Brien, D.J., Martínez-Moreno, F.J., 2002. An evaluation of the application of infrared thermal imaging to the tele-diagnosis of sarcoptic mange in the Spanish ibex (*Capra pyrenaica*). *Veterinary Parasitology* 109, 111–117.
- Bitar, D., Goubar, A., Desenclos, J.C., 2009. International travels and fever screening during epidemics: A literature review on the effectiveness and potential use of non-contact infrared thermometers. *Eurosurveillance*, 14.
- Chiu, W.T., Lin, P.W., Chiou, H.Y., Lee, W.S., Lee, C.N., Yang, Y.Y., Lee, H.M., Hsieh, M.S., Hu, C.J., Ho, Y.S., et al., 2005. Infrared thermography to mass-screen suspected SARS patients with fever. *Asia-Pacific Journal of Public Health* 17, 26–28.
- Dal Pozzo, F., Saegerman, C., Thiry, E., 2009. Bovine infection with bluetongue virus with special emphasis on European serotype 8. *The Veterinary Journal* 182, 142–151.

- Eddy, A.L., Van Hoogmoed, L.M., Snyder, J.R., 2001. The role of thermography in the management of equine lameness. *The Veterinary Journal* 162, 172–181.
- Foster, N.M., Luedke, A.J., Parsonson, I.M., Walton, T.E., 1991. Temporal relationships of viremia, interferon activity, and antibody responses of sheep infected with several bluetongue virus strains. *American Journal of Veterinary Research* 52, 192–196.
- Girardin, F., Orgul, S., Erb, C., Flammer, J., 1999. Relationship between corneal temperature and finger temperature. *Archives of Ophthalmology* 117, 166–169.
- Hamblin, C., Salt, J.S., Graham, S.D., Hopwood, K., Wade-Evans, A.M., 1998. Bluetongue virus serotypes 1 and 3 infection in Poll Dorset sheep. *Australian Veterinary Journal* 76, 622–629.
- Hofmann, M.A., Renzullo, S., Mader, M., Chaignat, V., Worwa, G., Thuer, B., 2008. Genetic characterization of toggenburg orbivirus, a new bluetongue virus, from goats, Switzerland. *Emerging Infectious Diseases* 14, 1855–1861.
- Jiang, L.J., Ng, E.Y., Yeo, A.C., Wu, S., Pan, F., Yau, W.Y., Chen, J.H., Yang, Y., 2005. A perspective on medical infrared imaging. *Journal of Medical Engineering and Technology* 29, 257–267.
- Kastberger, G., Stachl, R., 2003. Infrared imaging technology and biological applications. *Behavior Research Methods, Instruments, and Computers* 35, 429–439.
- Maan, S., Maan, N.S., Nomikou, K., Veronesi, E., Bachanek-Bankowska, K., Belaganahalli, M.N., Attoui, H., Mertens, P.P., 2011. Complete genome characterisation of a novel 26th bluetongue virus serotype from Kuwait. *PLoS ONE* 6, e26147.
- MacLachlan, N.J., Drew, C.P., Darpel, K.E., Worwa, G., 2009. The pathology and pathogenesis of bluetongue. *Journal of Comparative Pathology* 141, 1–16.
- MacLachlan, N.J., Guthrie, A.J., 2010. Re-emergence of bluetongue, African horse sickness, and other orbivirus diseases. *Veterinary Research* 41, 35.
- Matalka, K.Z., 2003. Neuroendocrine and cytokines-induced responses to minutes, hours, and days of mental stress. *Neuroendocrinology Letters* 24, 283–292.
- Ng, E.Y., Kaw, G.J., Chang, W.M., 2004. Analysis of IR thermal imager for mass blind fever screening. *Microvascular Research* 68, 104–109.
- Nikkhah, A., Plaizier, J.C., Einarson, M.S., Berry, R.J., Scott, S.L., Kennedy, A.D., 2005. Short communication: Infrared thermography and visual examination of hooves of dairy cows in two stages of lactation. *Journal of Dairy Science* 88, 2749–2753.
- Pavlidis, I., Eberhardt, N.L., Levine, J.A., 2002. Seeing through the face of deception. *Nature* 415, 35.
- Pérez de Diego, A.C., Athmaram, T.N., Stewart, M., Rodríguez-Sánchez, B., Sánchez-Vizcaino, J.M., Noad, R., Roy, P., 2011. Characterization of protection afforded by a bivalent virus-like particle vaccine against bluetongue virus serotypes 1 and 4 in sheep. *PLoS ONE* 6, e26666.
- Priyadarshini, S., Aich, P., 2012. Effects of psychological stress on innate immunity and metabolism in humans: A systematic analysis. *PLoS ONE* 7, e43232.
- Rainwater-Lovett, K., Pacheco, J.M., Packer, C., Rodríguez, L.L., 2009. Detection of foot-and-mouth disease virus infected cattle using infrared thermography. *The Veterinary Journal* 180, 317–324.
- Rodríguez-Prieto, V., Rubio-García, A., Melero, M., García, D., Sánchez-Vizcaino, J., 2013. Identification of the pattern of appearance and development of thermal windows in the skin of juvenile Pacific walrus (*Odobenus rosmarus divergens*) in a controlled environment. *Marine Mammal Science* 29, 167–176.
- Schaefer, A.L., Cook, N.J., Bench, C., Chabot, J.B., Colyn, J., Liu, T., Okine, E.K., Stewart, M., Webster, J.R., 2012. The non-invasive and automated detection of bovine respiratory disease onset in receiver calves using infrared thermography. *Research in Veterinary Science* 93, 928–935.
- Schaefer, A.L., Cook, N.J., Church, J.S., Basarab, J., Perry, B., Miller, C., Tong, A.K., 2007. The use of infrared thermography as an early indicator of bovine respiratory disease complex in calves. *Research in Veterinary Science* 83, 376–384.
- Schaefer, A.L., Cook, N., Tessaro, S.V., Deregt, D., Desroches, G., Dubeski, P.L., Tong, A.K.W., Godson, D.L., 2004. Early detection and prediction of infection using infrared thermography. *Canadian Journal of Animal Science* 84, 73–80.
- Schwartz-Cornil, I., Mertens, P.P., Contreras, V., Hemati, B., Pascale, F., Breard, E., Mellor, P.S., MacLachlan, N.J., Zientara, S., 2008. Bluetongue virus: Virology, pathogenesis and immunity. *Veterinary Research* 39, 46.
- Stewart, M., Webster, J.R., Verkerk, G.A., Schaefer, A.L., Colyn, J.J., Stafford, K.J., 2007. Non-invasive measurement of stress in dairy cows using infrared thermography. *Physiology and Behavior* 92, 520–525.
- Stubsjoen, S.M., Flo, A.S., Moe, R.O., Janczak, A.M., Skjerve, E., Valle, P.S., Zanella, A.J., 2009. Exploring non-invasive methods to assess pain in sheep. *Physiology and Behavior* 98, 640–648.
- Toussaint, J.F., Sailleau, C., Breard, E., Zientara, S., De Clercq, K., 2007. Bluetongue virus detection by two real-time RT-qPCRs targeting two different genomic segments. *Journal of Virological Methods* 140, 115–123.
- Velthuis, A.G., Saatkamp, H.W., Mourits, M.C., de Koeijer, A.A., Elbers, A.R., 2010. Financial consequences of the Dutch bluetongue serotype 8 epidemics of 2006 and 2007. *Preventive Veterinary Medicine* 93, 294–304.
- Worwa, G., Hilbe, M., Chaignat, V., Hofmann, M.A., Griot, C., Ehrensperger, F., Doherr, M.G., Thur, B., 2010. Virological and pathological findings in bluetongue virus serotype 8 infected sheep. *Veterinary Microbiology* 144, 264–273.