

RESEARCH ARTICLE

Open Access

Integrated genomic study of quadruple-WT GIST (*KIT*/*PDGFRA*/*SDH*/*RAS* pathway wild-type GIST)

Margherita Nannini¹, Annalisa Astolfi², Milena Urbini², Valentina Indio², Donatella Santini³, Michael C Heinrich⁴, Christopher L Corless⁵, Claudio Ceccarelli³, Maristella Saponara², Anna Mandrioli¹, Cristian Lolli¹, Giorgio Ercolani⁶, Giovanni Brandi¹, Guido Biasco^{1,2} and Maria A Pantaleo^{1,2*}

Abstract

Background: About 10-15% of adult gastrointestinal stromal tumors (GIST) and the vast majority of pediatric GIST do not harbour *KIT* or platelet-derived growth factor receptor alpha (*PDGFRA*) mutations (J Clin Oncol 22:3813–3825, 2004; Hematol Oncol Clin North Am 23:15–34, 2009). The molecular biology of these GIST, originally defined as *KIT*/*PDGFRA* wild-type (WT), is complex due to the existence of different subgroups with distinct molecular hallmarks, including defects in the succinate dehydrogenase (*SDH*) complex and mutations of neurofibromatosis type 1 (*NF1*), *BRAF*, or *KRAS* genes (*RAS*-pathway or *RAS-P*).

In this extremely heterogeneous landscape, the clinical profile and molecular abnormalities of the small subgroup of WT GIST suitably referred to as *quadruple wild-type* GIST (*quadruple*^{WT} or *KIT*^{WT}/*PDGFRA*^{WT}/*SDH*^{WT}/*RAS-P*^{WT}) remains undefined. The aim of this study is to investigate the genomic profile of *KIT*^{WT}/*PDGFRA*^{WT}/*SDH*^{WT}/*RAS-P*^{WT} GIST, by using a massively parallel sequencing and microarray approach, and compare it with the genomic profile of other GIST subtypes.

Methods: We performed a whole genome analysis using a massively parallel sequencing approach on a total of 16 GIST cases (2 *KIT*^{WT}/*PDGFRA*^{WT}/*SDH*^{WT} and *SDHB*^{IHC+}/*SDHA*^{IHC+}, 2 *KIT*^{WT}/*PDGFRA*^{WT}/*SDHA*^{mut} and *SDHB*^{IHC-}/*SDHA*^{IHC-} and 12 cases of *KIT*^{mut} or *PDGFRA*^{mut} GIST). To confirm and extend the results, whole-genome gene expression analysis by microarray was performed on 9 out of 16 patients analyzed by RNAseq and an additional 20 GIST patients (1 *KIT*^{WT}/*PDGFRA*^{WT} *SDHA*^{mut} GIST and 19 *KIT*^{mut} or *PDGFRA*^{mut} GIST). The most impressive data were validated by quantitative PCR and Western Blot analysis.

Results: We found that both cases of *quadruple*^{WT} GIST had a genomic profile profoundly different from both either *KIT*/*PDGFRA* mutated or *SDHA*-mutated GIST. In particular, the *quadruple*^{WT} GIST tumors are characterized by the overexpression of molecular markers (*CALCR1* and *COL22A1*) and of specific oncogenes including tyrosine and cyclin-dependent kinases (*NTRK2* and *CDK6*) and one member of the *ETS*-transcription factor family (*ERG*).

(Continued on next page)

* Correspondence: maria.pantaleo@unibo.it

¹Department of Specialized, Experimental and Diagnostic Medicine, Sant'Orsola-Malpighi Hospital, University of Bologna, Via Massarenti 9, 40138 Bologna, Italy

²"Giorgio Prodi" Cancer Research Center, University of Bologna, Bologna, Italy

Full list of author information is available at the end of the article

(Continued from previous page)

Conclusion: We report for the first time an integrated genomic picture of $KIT^{WT}/PDGFRA^{WT}/SDH^{WT}/RAS-P^{WT}$ GIST, using massively parallel sequencing and gene expression analyses, and found that $quadruple^{WT}$ GIST have an expression signature that is distinct from SDH -mutant GIST as well as GIST harbouring mutations in KIT or $PDGFRA$. Our findings suggest that $quadruple^{WT}$ GIST represent another unique group within the family of gastrointestinal stromal tumors.

Keywords: Gastrointestinal stromal tumors (GIST), Wild-type, KIT , $PDGFRA$, Succinate dehydrogenase, $SDHA$, RAS , $Quadruple^{WT}$

Background

About 10-15% of adult gastrointestinal stromal tumors (GIST) and the vast majority of pediatric GIST do not harbour KIT or platelet-derived growth factor receptor alpha ($PDGFRA$) mutations [1,2]. These GIST were originally defined as $KIT/PDGFRA$ wild-type ($KIT^{WT}/PDGFRA^{WT}$) and generally are less sensitive to tyrosine-kinase inhibitors [3-5]. Their molecular biology is heterogeneous as evidenced by the existence of different subgroups with distinct molecular abnormalities (Figure 1). $KIT^{WT}/PDGFRA^{WT}$ GIST can be divided into two main groups according to the succinate dehydrogenase subunit B ($SDHB$) immunohistochemical status (IHC): $SDHB$ positive ($SDHB^{IHC+}$), or $type 1$ GIST which includes neurofibromatosis type 1 ($NF1$)-mutated GIST and some sporadic $KIT^{WT}/PDGFRA^{WT}$ GIST. The second group of $KIT^{WT}/PDGFRA^{WT}$, called as $type 2$ GIST, is characterized by a lack of $SDHB$ protein expression ($SDHB^{IHC-}$). In some cases $SDHB^{IHC-}$ is due to germline and/or *de novo* mutations of any of the four SDH subunits ($SDHA^{mut}$) [6-8]. The $SDHB^{IHC-}$ includes additional subgroups that can be distinguished on the basis of the $SDHA$ IHC status, which strictly correlates with the presence of $SDHA$ -inactivating mutations ($SDHA^{mut}$) [9-16]. In particular, $SDHB^{IHC-}/SDHA^{IHC-}$ GIST include a subgroup of young adult women patients with a well defined clinical and biological profile, generally characterized by the gastric primary tumour localization, a predominantly mixed epithelioid and spindle cell morphology, diffuse IHC positivity for KIT and discovered on gastrointestinal stromal tumours 1 ($DOG1$), frequent lymph node metastases, and an indolent course of disease even if metastasis is present [17]. Moreover, they are characterized by overexpression of the insulin growth factor 1 receptor ($IGF1R$) [18-21]. On the contrary, $SDHB^{IHC-}$, but $SDHA^{IHC+}$ subgroup include 1) cases of syndromic GIST arising from the Carney-Stratakis Syndrome (CSS), that are characterized by $SDHB$, $SDHC$ or $SDHD$ inactivating mutations ($SDHB^{mut}$, $SDHC^{mut}$, or $SDHD^{mut}$); and 2) cases of Carney Triad (CT), that lack $SDHx$ -mutations [6,22-24]. More rarely, $SDHB^{IHC-}/SDHA^{IHC+}$ subgroup may include sporadic $KIT^{WT}/PDGFRA^{WT}$ GIST characterized by $SDHB$, $-C$ or D mutations (most of them germline, and in few cases by $SDHA$ mutations), arising

mainly from the stomach, with a lesser female prevalence, but histologically similar to $SDHA^{IHC-}$ GIST [15].

The $SDHB^{IHC+}$ subgroup includes cases of $NF1$ -mutated GIST, that are commonly intestinal, multifocal and have an $IGF1R$ negative staining, and also sporadic $KIT^{WT}/PDGFRA^{WT}$ GIST, arising in the adult from any part of gastrointestinal tract [15,21,25]. In about 15% of cases of sporadic $KIT^{WT}/PDGFRA^{WT}$ GIST there may be an activating mutation in $BRAF$ or, more rarely, RAS [26-28]. Taken together, cases of $BRAF$, RAS , or $NF1$ mutant GIST can be referred to as RAS -pathway ($RAS-P$) mutant GIST ($RAS-P^{mut}$).

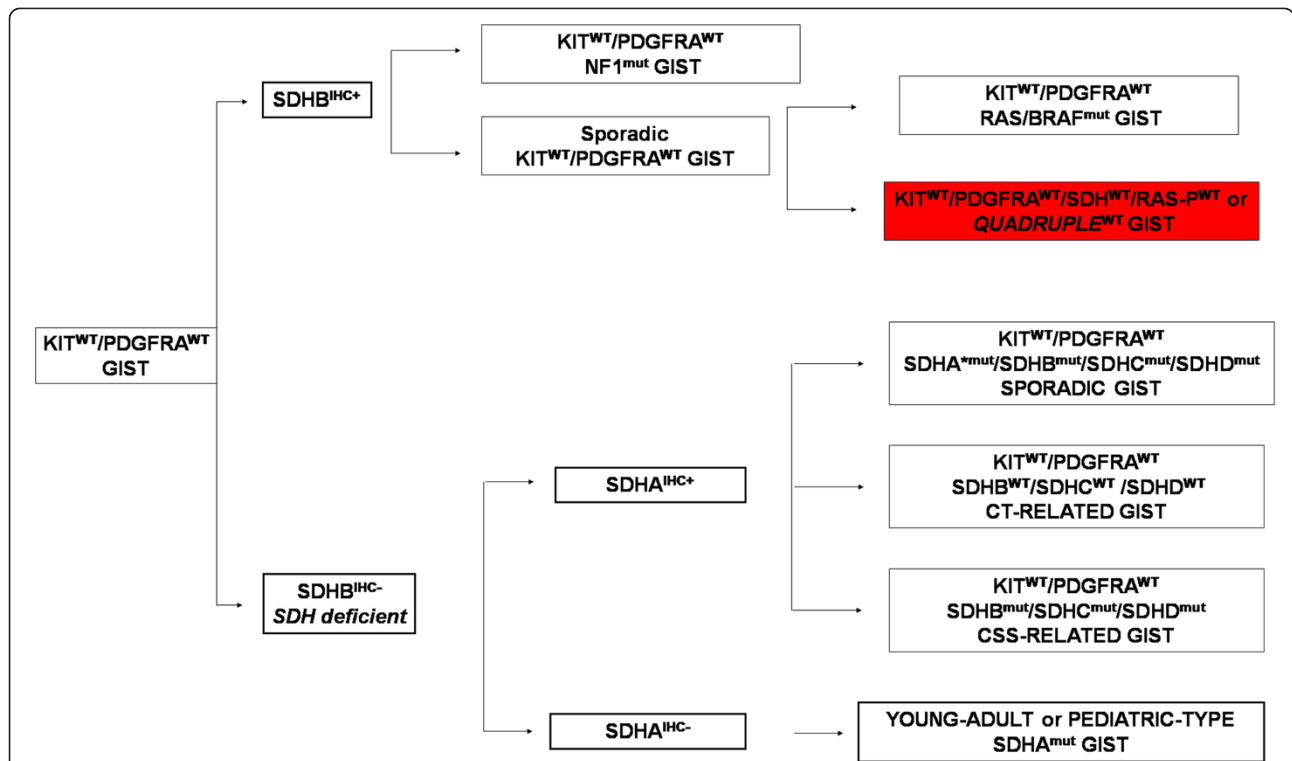
In this extremely heterogeneous landscape, the clinical profile and molecular abnormalities of the small subgroup of WT GIST suitably referred to as $quadruple$ wild-type GIST ($quadruple^{WT}$ or $KIT^{WT}/PDGFRA^{WT}/SDH^{WT}/RAS-P^{WT}$) remains undefined [29]. The aim of this study is to investigate the genomic profile of $KIT^{WT}/PDGFRA^{WT}/SDH^{WT}/RAS-P^{WT}$ GIST, by using a massively parallel sequencing and microarray approach, and compare it with the genomic profile of other GIST subtypes.

Results and discussion

Whole-Transcriptome Paired-End RNA Sequencing and copy number analysis

Whole-Transcriptome Paired-End RNA Sequencing was performed on a total of 16 GIST samples, of which 2 were $KIT^{WT}/PDGFRA^{WT}$ without SDH -inactivating mutations and $SDHB^{IHC+}/SDHA^{IHC+}$ (GIST_133 and GIST_127), 2 were $KIT^{WT}/PDGFRA^{WT}/SDHA^{mut}$ and $SDHB^{IHC-}/SDHA^{IHC-}$ (GIST_7 and GIST_10), and 12 were KIT^{mut} or $PDGFRA^{mut}$. The principal component analysis showed that both GIST_133 and GIST_127 ($KIT^{WT}/PDGFRA^{WT}/SDH^{WT}$ and $SDHB^{IHC+}/SDHA^{IHC+}$) are characterized by a gene expression profile profoundly different from both GIST_7 and GIST_10 ($KIT^{WT}/PDGFRA^{WT}/SDHA^{mut}$ and $SDHB^{IHC-}/SDHA^{IHC-}$), while clustering in proximity of a subset of KIT^{mut} or $PDGFRA^{mut}$ GIST (Figure 2A).

To investigate the presence of novel mutations or small ins/del in the whole coding regions of KIT and $PDGFRA$ we analyzed whole transcriptome sequencing



* SDHA inactivating mutations have been reported only in three cases SDHB^{IHC-}/SDHA^{IHC+} (15)

Figure 1 The complexity of *KIT*^{WT}/*PDGFRA*^{WT} GIST molecular biology. *KIT*^{WT}/*PDGFRA*^{WT} GIST could be firstly divided two main group according to the *SDHB* immunohistochemical status: *SDHB*^{IHC+} (including *NF1*-mutated GIST and sporadic *KIT*^{WT}/*PDGFRA*^{WT} GIST with or without *KRAS*/*BRAF* mutations) and *SDHB*^{IHC-} or *SDH*-deficient GIST. The latter could be further divided according to the *SDHA* immunohistochemical status: *SDHB*^{IHC-}/*SDHA*^{IHC-} GIST (pediatric type or young adult GIST characterized by germline or somatic inactivating *SDHA* mutations) and *SDHB*^{IHC-}/*SDHA*^{IHC+} GIST (including Carney-Stratakis Syndrome-related GIST, characterized by germline or somatic inactivating *SDHB*, -C, -D mutations, Carney Triad-related GIST that lack *SDHx* mutations, and sporadic *KIT*^{WT}/*PDGFRA*^{WT} GIST, characterized by germline or somatic inactivating *SDHB*, -C, -D mutations and *SDHA* mutations, reported in only three cases [15]. In red the subset of *KIT*^{WT}/*PDGFRA*^{WT} GIST referred to as *quadruple*^{WT} GIST (*KIT*^{WT}/*PDGFRA*^{WT}/*SDH*^{WT}/*RAS*-P^{WT}), that represent the subject of this study.

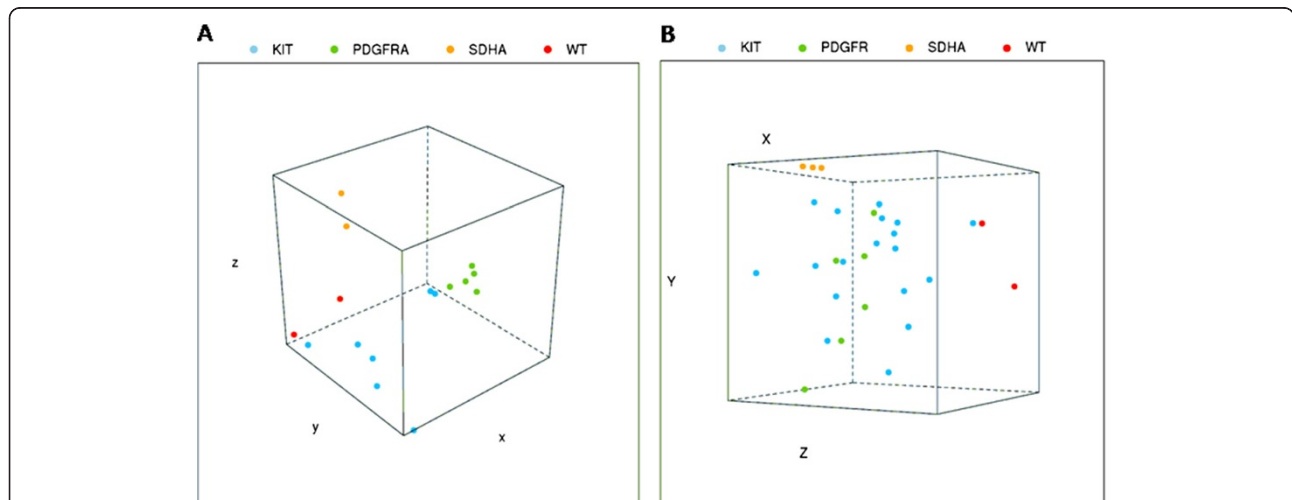


Figure 2 Principal Component Analysis (PCA) performed on samples analyzed with RNA-seq (Figure 2A) and microarray (Figure 2B). In both cases the patients with *SDHA* mutations are arranged in a strongly separated cluster (yellow points), as were the *KIT*^{WT}/*PDGFRA*^{WT}/*SDH*^{WT}/*RAS*-P^{WT} samples (red point) although closer to *KIT* or *PDGFRA* mutated (respectively blue and green point).

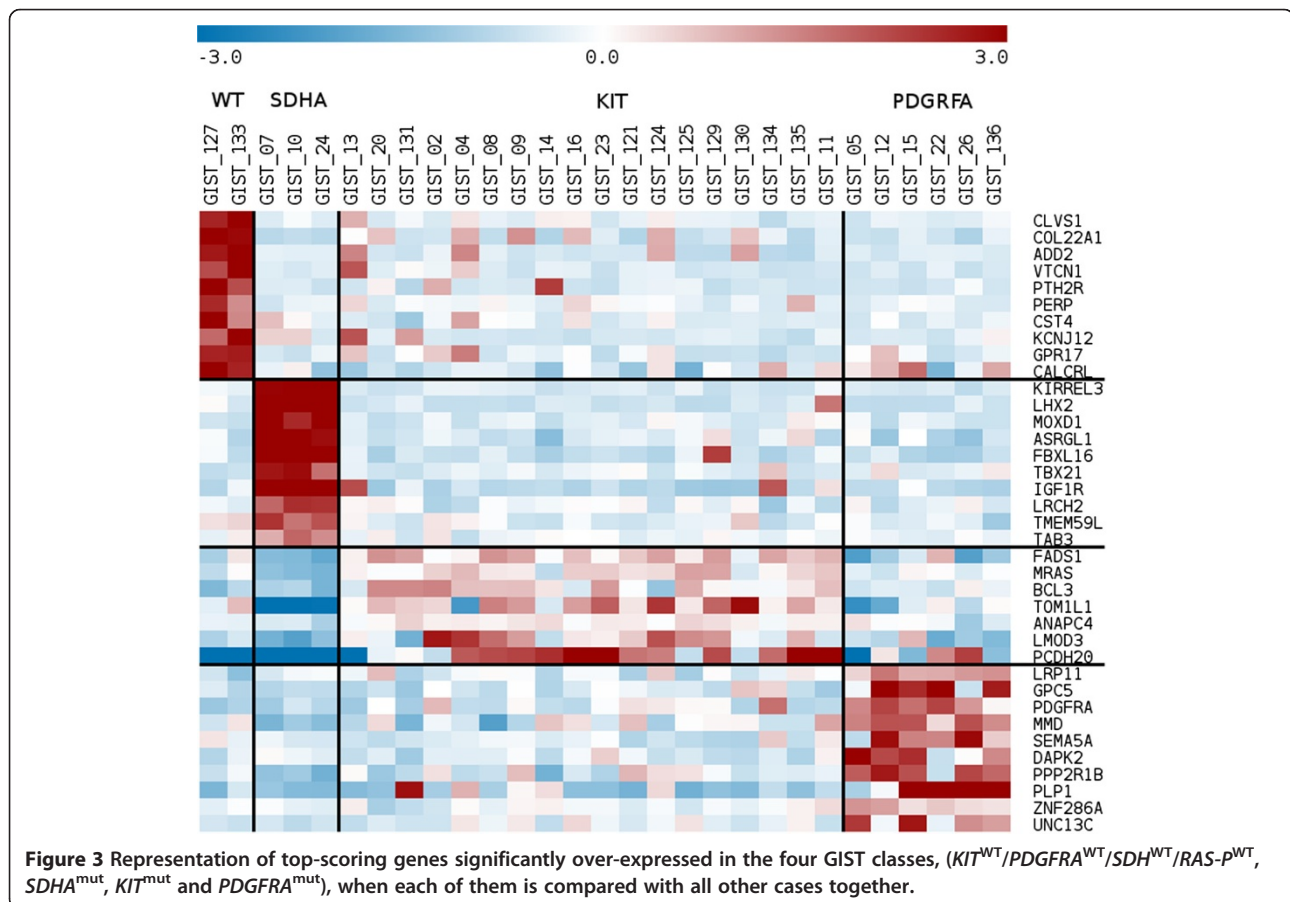
data for single nucleotide variant (SNV) and found no private or cryptic mutations. Moreover, no *NF-1*, *BRAF*, *RAS* mutations were found by whole transcriptome sequencing. Therefore, the GIST from these two patients were *KIT*^{WT}/*PDGFRA*^{WT}/*SDH*^{WT}/*RAS-P*^{WT}, or *quadruple*^{WT} GIST. Analysis of deleterious mutations from whole transcriptome sequencing did not identify any known oncogenic event or shared alteration in the two patients (Additional file 1: Table S1). Copy number analysis was performed on the two *KIT*^{WT}/*PDGFRA*^{WT}/*SDH*^{WT}/*RAS-P*^{WT} GIST: GIST_133 showed no genomic imbalances, while GIST_127 harbors several macroscopic cytogenetic alterations, including loss of chromosome arms 14q and 22q frequently observed in *KIT*/*PDGFRA* mutated GIST.

Gene expression analysis

To confirm and extend the results, whole-genome gene expression analysis by microarray was performed on 9 out of 16 patients analyzed by RNAseq and an additional 20 GIST patients (1 *KIT*^{WT}/*PDGFRA*^{WT} *SDHA*^{mut} GIST and 19 *KIT*^{mut} or *PDGFRA*^{mut} GIST). The principal component analysis confirmed that both *KIT*^{WT}/*PDGFRA*^{WT}/*SDH*^{WT}/*RAS-P*^{WT} GIST have a genetic profile significantly

different from all three *KIT*^{WT}/*PDGFRA*^{WT}/*SDHA*^{mut} GIST, and cluster in close proximity to some *KIT*^{mut} GIST samples (Figure 2B). Supervised gene expression analysis revealed the presence of specific genetic signatures characterizing the different molecular subgroups of GIST (Figure 3); the *SDHA*^{mut} group showed a gene signature mainly characterized by the over-expression of *IGF1R* (p value 2.7×10^{-11}) and of neural markers (*LHX2*, *KIRREL3*) [30], whereas as expected, all *PDGFRA*^{mut} GIST were clearly separated from *KIT*^{mut} GIST, especially for the expression of *PDGFRA*.

The *quadruple*^{WT} (*KIT*^{WT}/*PDGFRA*^{WT}/*SDH*^{WT}/*RAS-P*^{WT}) samples were characterized by a distinct gene expression profile (Figure 4), with 65 genes over-expressed or under-expressed (p value < 0.005) compared with all the other GIST molecular subgroups. GSEA analysis of the transcriptional profile of *quadruple*^{WT} tumors showed enrichment of Polycomb target genes with respect to *SDHA*^{mut} GIST, in particular of the classes of PRC2 targets (p value 0.043) and H3K27-bound genes (p value 0.021). The function of the upregulated genes was related to cell cycle progression and MAPK signaling, ad exemplified by increased expression of *SKP2*, *CDK6*, *FGF4*, *NTRK2*). The *quadruple*^{WT} GIST tumors



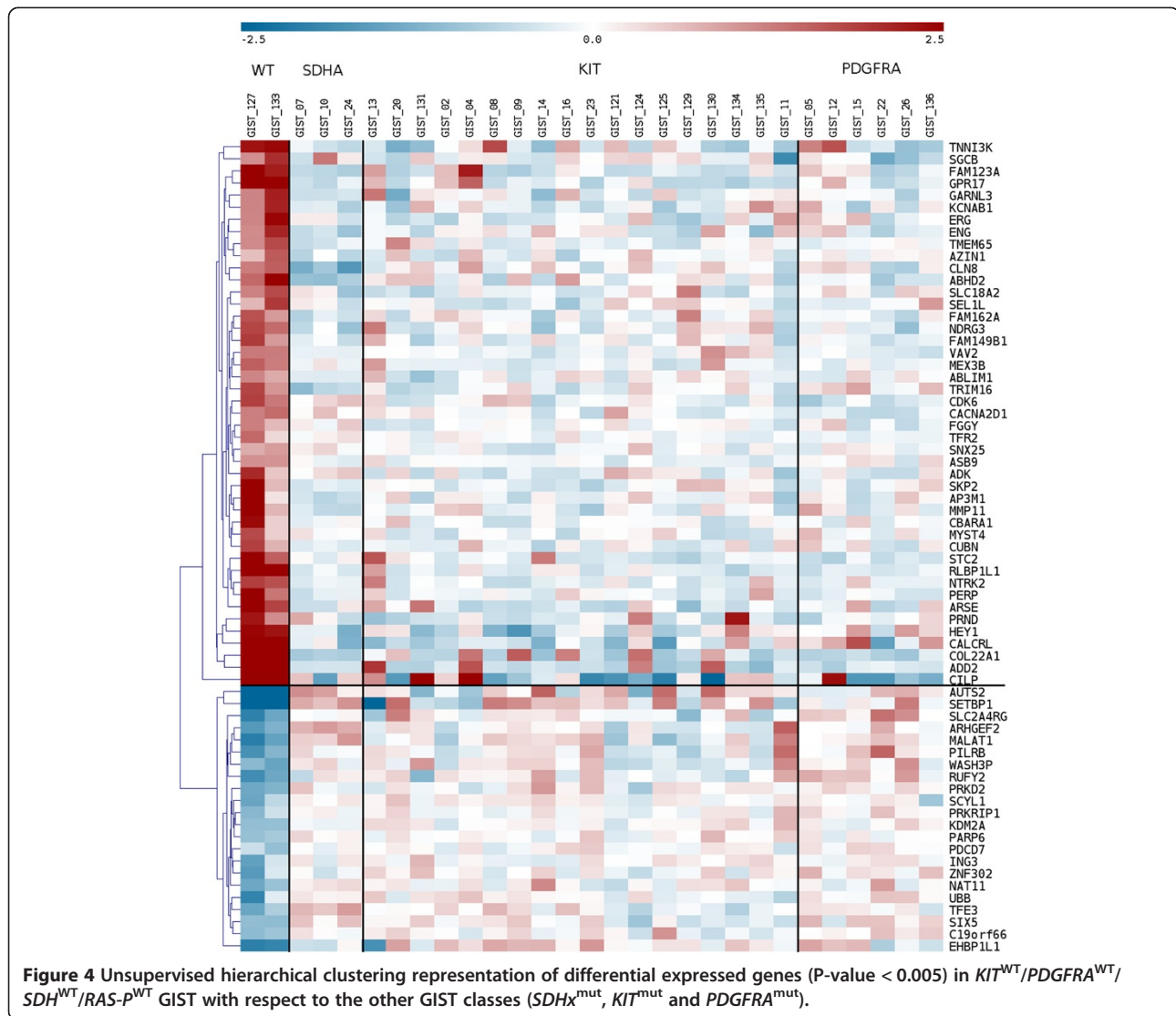


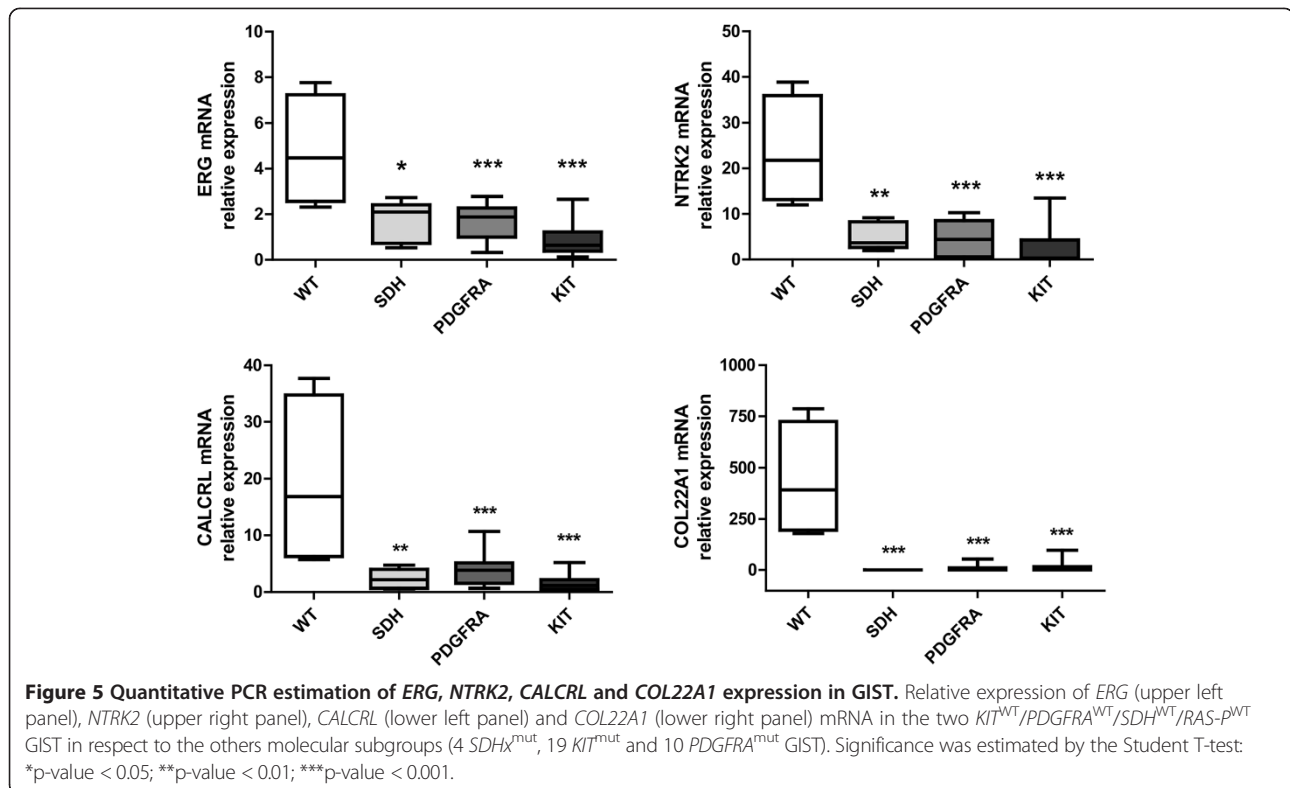
Figure 4 Unsupervised hierarchical clustering representation of differential expressed genes (P-value < 0.005) in *KIT*^{WT}/*PDGFRA*^{WT}/*SDH*^{WT}/*RAS-P*^{WT} GIST with respect to the other GIST classes (*SDH*^{mut}, *KIT*^{mut} and *PDGFRA*^{mut}).

are characterized by the overexpression of molecular markers (*CALCRL* and *COL22A1*) and of specific oncogenes including tyrosine and cyclin- dependent kinases (*NTRK2* and *CDK6*) and one member of the *ETS*-transcription factor family (*ERG*). Overexpression of *CALCRL*, *COL22A1*, *NTRK2* (*TrkB*) and of the *ETS*-transcription factor *ERG* was confirmed by quantitative PCR, showing that only the *KIT*^{WT}/*PDGFRA*^{WT}/*SDH*^{WT}/*RAS-P*^{WT} GIST subgroup expressed these molecular markers and possible therapeutic targets (Figure 5). *NTRK2* protein expression level was also evaluated by Western Blot analysis and its overexpression in *quadruple*^{WT} GIST was confirmed (Additional file 2: Figure S1). No mutations, gene fusions or amplifications were identified in *NTRK2* and *ERG*.

Discussion

The pathogenesis and underlying biology of *KIT*^{WT}/*PDGFRA*^{WT} with intact *SDH* complex (*SDHx*^{WT}) and

non-mutated *RAS*-pathway members (*RAS-P*^{WT}) suitably referred to as *quadruple*^{WT} GIST remains undefined. In the present study, we performed a whole genome analysis using a massively parallel sequencing approach on a total of 16 GIST cases that included 2 *KIT*^{WT}/*PDGFRA*^{WT}/*SDH*^{WT} and *SDHB*^{IHC+}/*SDHA*^{IHC+}, 2 *KIT*^{WT}/*PDGFRA*^{WT}/*SDHA*^{mut} and *SDHB*^{IHC-}/*SDHA*^{IHC-} and 12 cases of *KIT*^{mut} or *PDGFRA*^{mut} GIST. Notably, we found that both cases of *quadruple*^{WT} GIST had a transcriptome profile profoundly different from both *KIT*/*PDGFRA* mutated and *SDHA*-mutated GIST, suggesting a different molecular background underlying *quadruple*^{WT} GIST. Since both cases of *KIT*^{WT}/*PDGFRA*^{WT}/*SDH*^{WT} lacked mutations of *BRAF*, *RAS* family members or *NF1*, the GIST of these two patients was classified *KIT*^{WT}/*PDGFRA*^{WT}/*SDH*^{WT}/*RAS-P*^{WT} or *quadruple*^{WT} GIST. We further validated our data using genome wide gene expression analysis, performed on 9 cases from a previous



series that was expanded to include an additional 20 GIST cases (1 $KIT^{WT}/PDGFRA^{WT}/SDHA^{mut}$ GIST and 19 KIT^{mut} or $PDGFRA^{mut}$ GIST). This larger analysis confirmed the unique gene expression signature of the two $quadruple^{WT}$ GIST compared to KIT mutant, PDGFRA mutant or SDHA-mutant GIST. Interestingly, the gene signatures of the $quadruple^{WT}$ GIST, which both arose in the small intestine, clustered in close proximity to a single KIT^{mut} GIST sample (GIST_13). This case was a small intestine GIST of intermediate risk of relapse radically resected from a 46 year old; it harbored an exon 11 *KIT* point mutation (*KIT* exon 11 V559D). Our current sample size does not allow us to draw definitive conclusions, but we hypothesize that the intestinal origin of all three tumors may have influenced the gene signature. However, several other cases of small intestinal origin did not cluster near the cases of $quadruple^{WT}$ GIST. The influence of the tissue of origin on the gene signature is consistent with the recent data by Beadling *et al.*, who described five cluster groups among 136 GIST patients (53 KIT^{mut} , 12 $PDGFRA^{mut}$, 65 adult $KIT^{WT}/PDGFRA^{WT}$ and 7 pediatric $KIT^{WT}/PDGFRA^{WT}$) defined by the expression patterns of 14 target genes, that were in some cases paralleled by the location of the primary tumour [31].

Using a supervised analysis, we found four gene cluster subgroups based on *KIT/PDGFRA/SDH*-mutational status. Due to the rarity of *RAS-P* mutated GIST, we did not have any cases suitable for these genomic studies. Consistent with previous reports, $KIT^{WT}/PDGFRA^{WT}/$

$SDHA^{mut}$ GIST over-expressed *IGF1R*, further confirming the potential role of this receptor as a target or diagnostic marker for this specific molecular subgroup [18-21]. Moreover, as already described, the gene signature of $KIT^{WT}/PDGFRA^{WT}/SDHA^{mut}$ GIST was largely characterized by the expression of neural-commitment transcription markers, in support of the theory that this subgroup may have a different cellular origin or may derive from interstitial cells of Cajal (ICCs) during a different differentiation step, such as from precursors of ICCs [30]. Notably, both $quadruple^{WT}$ GIST had a distinct gene expression signature that was separated from the $KIT^{WT}/PDGFRA^{WT}/SDHA^{mut}$ GIST. Amongst the differentially expressed genes, it is interesting to note the over-expression of *CALCRL*, a G protein-coupled receptor that acts as a receptor for adrenomedullin and calcitonin gene-related peptide (*CGRP*), and is strongly expressed by in several vascular tumours and types of gliomas [32-35]. Also of interest, we found over-expression of *COL22A1*, a member of the collagen protein family which specifically localizes to tissue junctions and acts as a cell adhesion ligand for skin epithelial cells and fibroblasts [36]. Taken together, these findings may suggest the potential role of *CALCRL* and *COL22A1* as diagnostic markers for the identification of this GIST subgroup. This would need to be validated in a larger series of GIST.

We found that both $quadruple^{WT}$ GIST, in comparison with the other samples, strongly expressed several

oncogenes, including *ERG* and *NTRK2* (*TrkB*). This was confirmed by quantitative PCR. *ERG* is a well-known member of the erythroblast transformation-specific (*ETS*) family of transcription factors, which function as transcriptional regulators [37]. *ETS* proteins are regulated by the mitogenic (*RAS/MAPK*) signalling transduction pathway, and play an important role in cell differentiation, proliferation, apoptosis and tissue remodelling [38]. There is evidence for an oncogenic role of *ERG* and the other *ETS* transcription factors in many human cancers, including sarcomas, prostate cancer, and acute myeloid leukemia, in most cases via chromosomal translocations [39-41]. More recently, it has been shown that the IHC detection of *ERG* may be a useful marker for vascular tumors, prostate carcinoma and *ERG*-rearranged Ewing sarcoma [42-44]. Over-expression of *NTRK2* (*TrkB*) in *quadruple*^{WT} GIST is also of interest, as *NTRK2* helps regulated neuronal cell function, including synaptic plasticity, differentiation, growth, survival, and motility [45]. It has also been shown that *Trks* regulate important processes in non-neuronal cells, contributing to the pathogenesis of several kinds of cancer, such as medullary thyroid carcinoma, prostate cancer, non-small cell lung cancer, head and neck squamous cell carcinoma and pancreatic cancer, in addition to tumors of neural origin [46-51]. Given the relevant biological role played by *Trks* in cancer, different small molecule inhibitors have been developed and evaluated both in mono-therapy and in combination with chemotherapy in phase 1 and 2 clinical trials [52-58].

To our knowledge, the over-expression of *ERG* and *TrkB* in GIST has not been previously reported. However, it is well known that *ETV1*, another member of *ETS* family, is highly expressed in GIST and certain subsets of ICC. *ETV1* expression plays an important role in regulating the growth of *KIT* mutant GIST cell lines [59]. On the basis of our results, the overexpression of *ERG* and *TrkB* seems to be a unique feature of the *quadruple*^{WT} GIST, suggesting that it could play a relevant role in the pathogenesis of this subset of GIST. To translate these observations into clinical practice, the over-expression of both molecules could be investigated as diagnostic markers of *quadruple*^{WT} GIST.

Conclusions

In conclusion, we report for the first time an integrated genomic picture of the *quadruple*^{WT} GIST, using massively parallel sequencing and gene expression analyses, and have identified a unique subset of GIST among the family of the *KIT/PDGFR* WT GIST [60]. The frequency of this GIST subset amongst the family of GIST will need to be defined in future studies as well as any unique clinical-pathological features of this GIST subset, including response to conventional GIST medical therapy. In addition, ongoing studies of ICC developmental

biology may help identify the “normal” precursor cells that give rise to this unique GIST subgroup.

Methods

This study was approved by the institutional review board of Azienda Ospedaliero-Universitaria Policlinico S.Orsola-Malpighi, Bologna, Italy (approval number 113/2008/U/Tess). All patients provided written informed consent.

Patients and tumor samples

Fresh tissue specimens of GIST from 36 patients were collected during the surgical operation, snap-frozen in liquid nitrogen and stored at -80°C until analysis. Patient's characteristics are listed in Table 1.

Whole-Transcriptome Paired-End RNA Sequencing was performed on 16 GIST, including 2 *KIT*^{WT}/*PDGFR*^{WT} GIST patients without *SDH*-inactivating mutations (GIST_133 and GIST_127), 2 *KIT*^{WT}/*PDGFR*^{WT} GIST patients harbouring *SDHA*-mutations (GIST_7 and GIST_10), and 12 *KIT* or *PDGFR* mutated GIST patients (7 harboured exon 11 *KIT* mutations and 5 harboured exon 18 *PDGFR* mutations).

Whole-genome gene expression analysis was performed on 9 of the above 16 GIST and extended to include an additional 20 GIST: 1 *KIT*^{WT}/*PDGFR*^{WT}/*SDHA*^{mut} GIST and 19 *KIT* or *PDGFR* mutated GIST, of which 13 harboured *KIT* mutations (12 in exon 11 and 2 in exon 9), and 5 harboured *PDGFR* mutations (2 in exon 12, 1 in exon 14 and 2 in exon 18).

SDH status

SDH protein expression status was evaluated by both immunohistochemistry (IHC) of *SDHB* and *SDH* subunits sequencing. IHC was performed on 4- μm sections of FFPE GIST tumor samples. Rabbit polyclonal anti-*SDHB* (HPA002868, Sigma-Aldrich, St Louis, MO, USA, 1:800) antibody was used. The sections were deparaffinized, rehydrated, and subjected to the appropriate antigen retrieval treatment (*SDHB*: microwave heating in citrate buffer pH 6.0 at 100 $^{\circ}\text{C}$ for 40 min). After cooling at room temperature, the activity of endogenous peroxidases was inhibited using methanol/H₂O₂ (0.5% v/v) for 20 min. The sections were then washed in phosphate-buffered saline (PBS, pH 7.2-7.4) and incubated with the specific primary antibody overnight at room temperature. After that, the sections were washed in PBS and treated using the Novolink Polymer Detection System (Novocastra, Newcastle upon Tyne, UK) according to the manufacturer's instructions. Liver tissues (for *SDHB*) were used as positive controls. These tissues showed strong granular staining in the cytoplasm and mitochondria with both of the antibodies.

Table 1 Patient's characteristic

ID	Sex	Array	RNAseq	Age	Site	Disease status at diagnosis	KIT/PDGFR/SDH mutational status
GIST_133	M	X	X	57	Duodenum	Localized	WT
GIST_127	F	X	X	63	Ileum	Localized	WT
GIST_07	F	X	X	27	Stomach	Metastatic	SDHA exon 9 p.S384X
GIST_10	M	X	X	29	Stomach	Metastatic	SDHA exon 2 p.R31X; SDHA exon 13 p.R589W
GIST_188	F		X	57	Duodenum	Metastatic	KIT exon 11 p.N564-L576 del + KIT exon 17 p.N822K
GIST_174	M		X	59	Stomach	Metastatic	KIT exon 11 p.N564_L576 del + KIT exon 17 p.N822K
GIST_131	M	X	X	58	Ileum	Localized	KIT exon 11 p.V569_Y578 del
GIST_11	M	X	X	65	Stomach	Localized	KIT exon 11 p.557-558 del
GIST_134	F	X	X	65	Stomach	Localized	KIT exon p.V559D
GIST_124	M	X	X	70	Stomach	Localized	KIT exon 11 p.1765-1766 ins
GIST_150	F		X	55	Stomach	Localized	KIT exon 11 p.P551_E554 del
GIST_165	M		X	50	Stomach	Localized	PDGFRA exon 18 p.D842V
GIST_136	M	X	X	76	Stomach	Localized	PDGFRA exon 18 p.D842V
GIST_140	F		X	45	Stomach	Localized	PDGFRA exon 18 p.D842V
GIST_141	M		X	68	Stomach	Localized	PDGFRA exon 18 p.D842V
GIST_138	F		X	75	Stomach	Localized	PDGFRA exon 18 p.D842V
GIST_02	F	X		85	Stomach	Localized	KIT exon 11 p.V560D
GIST_04	M	X		79	Stomach	Localized	KIT exon 9 p.AY502-503 ins
GIST_05	M	X		68	Stomach	Localized	PDGFRA exon 12 p.SPDGHE566-571RIQ
GIST_08	M	X		62	Stomach	Localized	KIT exon 11 p.V559D
GIST_09	M	X		54	Stomach	Localized	KIT exon 11 TLQPYDHHKWEFFP 574–585 ins at P585
GIST_12	F	X		66	Stomach	Localized	PDGFRA exon 14 p.K646E
GIST_13	M	X		46	Small intestine	Localized	KIT exon 11 p.V559D
GIST_14	M	X		56	Stomach	Localized	KIT exon 11 p.WK557-558del
GIST_15	F	X		64	Stomach	Localized	PDGFRA exon 18 DIMH p.842-845 DIMH del
GIST_16	F	X		62	Stomach	Localized	KIT exon 11 p.L576P
GIST_20	M	X		38	Small intestine	Metastatic	KIT exon 11 del MYEQW552-557 Z + KIT exon 18 A829P
GIST_22	F	X		76	Stomach	NA	PDGFRA exon 18 p.D842V
GIST_23	F	X		47	Stomach	NA	KIT exon 11 p.V559D
GIST_24	F	X		18	Stomach	Metastatic	SDHA exon 8 p.L349R fs*11
GIST_26	M	X		49	Stomach	Localized	PDGFRA exon 12 p.V561D
GIST_121	M	X		71	Stomach	Localized	KIT exon 11 p.V559D
GIST_125	F	X		48	Stomach	Localized	KIT exon 11 p.W557R
GIST_129	M	X		59	Stomach	Localized	KIT exon11 p.Y553_V559 delins L
GIST_130	F	X		79	Stomach	Localized	KIT exon 9 p.A502-Y503 ins
GIST_135	F	X		61	Stomach	Localized	KIT exon 11 p.W557-E561 del

SDHA gene exons [1-15], SDHB gene exons [1-8], SDHC (exon 1–6) and SDHD (exon 1–4) were sequenced on fresh-frozen tumor specimens of $KIT^{WT}/PDGFRA^{WT}$ GIST patients by Sanger Sequencing method. DNA was extracted by the QIAmp DNA Mini kit (Qiagen, Milan, Italy) in accordance with manufacturer's directions. Each exon was amplified with Polymerase Chain Reaction (PCR)

amplification using specific primer pairs designed with Primer Express 3.0 Software (Applied Biosystem) to amplify exons but not SDHA pseudo-genes located on chromosomes 3 and 5. Then, PCR products were purified with the Qiaquick PCR purification kit (Qiagen, Milan, Italy) and sequenced on both strands using the Big Dye Terminator v1.1 Cycle Sequencing kit (Applied Biosystems). Sanger

sequencing was performed on ABI 3730 Genetic Analyzer (Applied Biosystems).

Whole-transcriptome paired-end RNA sequencing

Total RNA was extracted from tumor specimens with RNeasy Mini Kit (Qiagen, Milan, Italy), then cDNA libraries were synthesized from 250 ng total RNA with TruSeq RNA Sample Prep Kit v2 (Illumina, San Diego, CA) according to the manufacturer's recommendations. Sequencing by synthesis was performed on HiScanSQ sequencer (Illumina) at 75 bp in paired-end mode. Whole-transcriptome sequencing yielded an average of 61 million mapped reads/patient, thus reaching an average coverage of 44X. Two *SDHA*^{mut} tumor specimens were previously analyzed by whole transcriptome sequencing at the Genome Sciences Centre (Vancouver, Canada) [9].

Bioinformatic analysis

After demultiplexing and FASTQ generation (both steps performed with Casava1.8, an application software specifically developed by Illumina), the paired-end reads quality were analyzed with the function `fastx_quality_stats` (part of FASTX Toolkit available at http://hannon-lab.cshl.edu/fastx_toolkit/index.html). Based on these results we decided to trim each read of each sample at 74 bp in order to maximize sequence quality. The paired-end reads were mapped with the pipeline TopHat/Bowtie [61] on human reference genome HG19, collected from UCSC Genome Browser (<http://www.genome.ucsc.edu/>). After the alignment procedure the BAM file obtained was manipulated with Samtools [62] in order to remove the optical/PCR duplicate, to sort and to index it.

The analysis of gene expression was performed in two steps: 1) the function `htseq-count` (Python package HTseq) [63] was adopted to count the number of reads mapped on known genes, included in the Ensembl release 72 annotation features (<http://www.ensembl.org/>); 2) the differential expressed genes were evaluated using the R-Bioconductor package `edgeR` [64]. `DeFuse`, `ChimeraScan` and `FusionMap` packages were used to detect chimeric transcripts from RNA-seq data.

Gene expression analysis

RNA was extracted using RNeasy Mini Kit (Qiagen), quality-controlled and labeled as directed by the Affymetrix expression technical manual before hybridization to U133Plus 2.0 arrays. Gene expression data were quantified by the RMA algorithm, filtered and analyzed with supervised techniques by Limma modified t-test for the detection of differentially expressed genes. Differential expressed genes hierarchical clustering and Principal Component Analysis (PCA) were performed with Multiple Array Viewer (MEV available at <http://www.tm4.org/mev.html>).

The same software was used to represent the data in the Figure 3 and Figure 4. Gene expression data of *KIT*/*PDGFRA*-mutated and *SDHA*-mutated samples were previously reported [30].

Copy number analysis

Genomic DNA was labelled and hybridized to SNP array Genome Wide SNP 6.0 (Affymetrix) following manufacturer's instructions. Quality control was performed by Contrast QC and MAPD calculation. Copy number analysis was performed by Genotyping Console and visualized with Chromosome Analysis Suite (*ChAS*) Software (Affymetrix). Hidden Markov Model algorithm was used to detect amplified and deleted segments with stringent parameters. To control for hyperfragmentation adjacent segments separated by < 50 probes were combined into one single segment, and only segments > 100 probes were considered.

Quantitative PCR (qPCR)

Total RNA was reverse transcribed using Transcriptor First Strand cDNA synthesis kit (Roche Applied Science, Monza, Italy) with oligo-dT primers, according to the manufacturer's guidelines. Gene-specific primers were designed with Primer Express 3.0 Software (Applied Biosystems) and qPCR was performed using FastStart Sybr Green (Roche) on the LightCycler 480 apparatus (Roche). DDcT method was used to quantify gene product levels relative to the GAPDH and ATP5B housekeeping genes. Significance was estimated by the Student's *t* test: * p-value < 0.05; ** p-value < 0.01, *** p-value < 0.01.

Western blot

Protein expression of *NTRK2* was evaluated on 2 *KIT*^{WT}/*PDGFRA*^{WT}/*SDH*^{WT}/*RAS-P*^{WT} GIST and 8 *KIT* or *PDGFRA* or *SDH* mutant GISTs, of which fresh-frozen tissues were available. Tissue were disrupted in RIPA buffer (Sigma-Aldrich) supplemented with proteases inhibitors and lysed for 1 h with gentle agitation at 4°C. Lysates were centrifuged at 13,000 × *g* for 15 min at 4°C and supernatants were stored at -80°C. Protein concentrations were determined with the BCA protein assay (Pierce, Rockford, IL). Twenty micrograms of protein were resolved on a 8% SDS-PAGE gel and transferred onto polyvinylidene difluoride (PVDF) membranes. Non-specific binding sites were blocked by incubation in blocking buffer (PBS containing 0.1% Tween-20 with 5% w/v milk) for 1 h at room temperature. Membranes were incubated overnight at 4°C, with the following primary antibodies: rabbit polyclonal *TRKB* antibody (ab18987 Abcam 1:500), and rabbit polyclonal β -*Tubulin* antibody (sc-9104 Santa Cruz Biotechnology, Santa Cruz, CA, 1:500). Then, membranes were washed and incubated with peroxidase conjugate secondary antibodies for 1 h at

room temperature. Antigens were revealed using Enhanced Chemiluminescence Reaction (ECL Select, Amersham Pharmacia Biotech, Les Ulis, France).

Nomenclature

KIT^{WT} No mutations of *KIT*
PDGFRA^{WT} No mutations of *PDGFRA*
SDH^{WT} No abnormalities of *SDHA/B/C/D* protein expression and/or gene mutation
SDHA^{IHC} - No expression of *SDHA* protein
SDHA^{IHC} + Normal expression of *SDHA* protein
SDHB^{IHC} - No expression of *SDHB* protein
SDHB^{IHC} + Normal expression of *SDHB* protein
SDHA^{mut} Mutation of *SDHA* protein (homozygous or compound heterozygote)
SDHB^{mut} Mutation of *SDHB* protein (homozygous or compound heterozygote)
SDHC^{mut} Mutation of *SDHC* protein (homozygous or compound heterozygote)
SDHD^{mut} - Mutation of *SDHD* protein (homozygous or compound heterozygote)

Additional files

Additional file 1: Table S1. *NTRK2* protein overexpression in *KIT*^{WT}/*PDGFRA*^{WT}/*SDH*^{WT}/*RAS*-p^{WT} GIST. Western blot immunostaining of *NTRK2* was performed on proteins extracted from two *quadruple*^{WT} GIST and from eight *PDGFRA* or *KIT* or *SDH* mutated GIST. HL-60 cell line protein extract was used as positive control.

Additional file 2: Figure S1. *NTRK2* protein overexpression in *KIT*^{WT}/*PDGFRA*^{WT}/*SDH*^{WT}/*RAS*-p^{WT} GIST. Western blot immunostaining of *NTRK2* was performed on proteins extracted from two *quadruple*^{WT} GIST and from eight *PDGFRA* or *KIT* or *SDH* mutated GIST. HL-60 cell line protein extract was used as positive control.

Abbreviations

CGRP: Calcitonin gene-related peptide; *CSS*: Carney-Stratakis Syndrome; *CT*: Carney Triad; *DOG1*: Discovered on gastrointestinal stromal tumours 1; *ETS*: Erythroblast transformation-specific; *GIST*: Gastrointestinal stromal tumors; *ICCs*: Cells of Cajal; *IGF1R*: Insulin growth factor 1 receptor; *IHC*: Immunohistochemistry; *NF1*: Neurofibromatosis type 1; *PDGFRA*: Platelet-derived growth factor receptor alpha; *RAS-P*: RAS-pathway; *SDH*: Succinate dehydrogenase; *SNV*: Single nucleotide variant; *WT*: Wild-type.

Competing interests

The authors declare that they have no competing interests.

Authors' contributions

MN: have made substantial contributions to conception and design of the study, interpretation of data and drafted the manuscript; AA: carried out the molecular genetic studies, the sequence alignment and have been involved in drafting the manuscript. MU: carried out the molecular genetic studies, the sequence alignment and have been involved in drafting the manuscript. VI: carried out the bioinformatic analysis and interpretation of data and have been involved in drafting the manuscript. DS: carried out the pathological analysis and the collection of samples. MCH: have been involved in revising the manuscript critically for important intellectual content and have given final approval of the version to be published. CLC: have been involved in revising the manuscript critically for important intellectual content and have given final approval of the version to be published. MS, AM and CL have helped to draft and revised the manuscript. GE: carried out the surgical

collection of samples. GB: have been involved in revising the manuscript critically for important intellectual content and have given final approval of the version to be published. MAP: have made substantial contributions to conception and design of the study, interpretation of data and drafted the manuscript; All authors read and approved the final manuscript.

Acknowledgments

All staff of Bologna GIST Study Group: Annalisa Altimari, Claudio Ceccarelli, Paolo Castellucci, Fausto Catena, Monica Di Battista, Massimo Del Gaudio, Valerio Di Scioscio, Stefano Fanti, Michelangelo Fiorentino, Pietro Fusaroli, Lidia Gatto, Franco W. Grigioni, Elisa Gruppioni, Alessandra Maleddu, Maria Caterina Pallotti, Antonio Daniele Pinna, Paola Tommasetti, Maurizio Zompatori.

Funding

The present work was done with a financial contribution by Novartis Oncology, Italy, and with funds by My First Grant 2013, AIRC 2013.

Author details

¹Department of Specialized, Experimental and Diagnostic Medicine, Sant'Orsola-Malpighi Hospital, University of Bologna, Via Massarenti 9, 40138 Bologna, Italy. ²"Giorgio Prodi" Cancer Research Center, University of Bologna, Bologna, Italy. ³Pathology Unit, S. Orsola-Malpighi Hospital, University of Bologna, Bologna, Italy. ⁴Portland VA Medical Center and Knight Cancer Institute, and Division of Hematology and Oncology, Oregon Health & Science University Portland, Portland, OR, USA. ⁵Department of Pathology and Knight Cancer Institute, Oregon Health & Science University, Portland, OR, USA. ⁶Transplant, General and Emergency Surgery Department, S. Orsola-Malpighi Hospital, University of Bologna, Bologna, Italy.

Received: 23 January 2014 Accepted: 17 September 2014

Published: 20 September 2014

References

1. Corless CL, Fletcher JA, Heinrich MC: **Biology of gastrointestinal stromal tumors.** *J Clin Oncol* 2004, **22**:3813–3825.
2. Janeway KA, Pappo AS: **Pediatric gastrointestinal stromal tumor.** *Hematol Oncol Clin North Am* 2009, **23**:15–34.
3. Heinrich MC, Corless CL, Demetri GD, Blanke CD, von Mehren M, Joensuu H, McGreevey LS, Chen CJ, Van den Abbeele AD, Druker BJ, Kiese B, Eisenberg B, Roberts PJ, Singer S, Fletcher CD, Silberman S, Dimitrijevic S, Fletcher JA: **Kinase mutations and imatinib response in patients with metastatic gastrointestinal stromal tumor.** *J Clin Oncol* 2003, **21**:4342–4349.
4. Debiec-Rychter M, Sciot R, Le Cesne A, Schlemmer M, Hohenberger P, van Oosterom AT, Blay JY, Leyvraz S, Stul M, Casali PG, Zalcberg J, Verweij J, Van Glabbeke M, Hagemeyer A, Judson I, EORTC Soft Tissue and Bone Sarcoma Group; Italian Sarcoma Group; Australasian Gastrointestinal Trials Group: **KIT mutations and dose selection for imatinib in patients with advanced gastrointestinal stromal tumours.** *Eur J Cancer* 2006, **42**:1093–1103.
5. Heinrich MC, Owzar K, Corless CL, Hollis D, Borden EC, Fletcher CD, Ryan CW, von Mehren M, Blanke CD, Rankin C, Benjamin RS, Bramwell VH, Demetri GD, Bertagnoli MM, Fletcher JA: **Correlation of kinase genotype and clinical outcome in the North American Intergroup Phase III Trial of imatinib mesylate for treatment of advanced gastrointestinal stromal tumor: CALGB 150105 Study by Cancer and Leukemia Group B and Southwest Oncology Group.** *J Clin Oncol* 2008, **26**:5360–5367.
6. Gill AJ, Chou A, Vilain R, Clarkson A, Lui M, Jin R, Tobias V, Samra J, Goldstein D, Smith C, Sioson L, Parker N, Smith RC, Sywak M, Sidhu SB, Wyatt JM, Robinson BG, Eckstein RP, Benn DE, Clifton-Bligh RJ: **Immunohistochemistry for SDHB divides gastrointestinal stromal tumors (GISTs) into 2 distinct types.** *Am J Surg Pathol* 2010, **34**:636–644.
7. Miettinen M, Wang ZF, Sarlomo-Rikala M, Osuch C, Rutkowski P, Lasota J: **Succinate dehydrogenase-deficient GISTs: a clinicopathologic, immunohistochemical, and molecular genetic study of 66 gastric GISTs with predilection to young age.** *Am J Surg Pathol* 2011, **35**:1712–1721.
8. Janeway KA, Kim SY, Lodish M, Nosé V, Rustin P, Gaal J, Dahia PL, Liegl B, Ball ER, Raygada M, Lai AH, Kelly L, Hornick JL, NIH Pediatric and Wild-Type GIST Clinic, O'Sullivan M, de Krijger RR, Dinjens WN, Demetri GD, Antonescu CR, Fletcher JA, Helman L, Stratakis CA: **Defects in succinate dehydrogenase in gastrointestinal stromal tumors lacking KIT and PDGFRA mutations.** *Proc Natl Acad Sci U S A* 2011, **108**:314–318.

9. Pantaleo MA, Astolfi A, Indio V, Moore R, Thiessen N, Heinrich MC, Gnocchi C, Santini D, Catena F, Formica S, Martelli PL, Casadio R, Pession A, Biasco G: **SDHA loss-of-function mutations in KIT-PDGFR α wild-type gastrointestinal stromal tumors identified by massively parallel sequencing.** *J Natl Cancer Inst* 2011, **103**:983–987.
10. Pantaleo MA, Nannini M, Astolfi A, Biasco G, GIST Study Group Bologna: **A distinct pediatric-type gastrointestinal stromal tumor in adults: potential role of succinate dehydrogenase subunit A mutations.** *Am J Surg Pathol* 2011, **35**:1750–1752.
11. Italiano A, Chen CL, Sung YS, Singer S, DeMatteo RP, LaQuaglia MP, Besmer P, Socci N, Antonescu CR: **SDHA loss of function mutations in a subset of young adult wild-type gastrointestinal stromal tumors.** *BMC Cancer* 2012, **12**:408.
12. Wagner AJ, Remillard SP, Zhang YX, Doyle LA, George S, Hornick JL: **Loss of expression of SDHA predicts SDHA mutations in gastrointestinal stromal tumors.** *Mod Pathol* 2013, **26**:289–294.
13. Dwight T, Benn DE, Clarkson A, Vilain R, Lipton L, Robinson BG, Clifton-Bligh RJ, Gill AJ: **Loss of SDHA expression identifies SDHA mutations in succinate dehydrogenase-deficient gastrointestinal stromal tumors.** *Am J Surg Pathol* 2013, **37**:226–233.
14. Oudijk L, Gaal J, Korpershoek E, van Nederveen FH, Kelly L, Schiavon G, Verweij J, Mathijssen RH, den Bakker MA, Oldenburg RA, van Loon RL, O'Sullivan MJ, de Krijger RR, Dinjens WN: **SDHA mutations in adult and pediatric wild-type gastrointestinal stromal tumors.** *Mod Pathol* 2013, **26**:456–463.
15. Miettinen M, Killian JK, Wang ZF, Lasota J, Lau C, Jones L, Walker R, Pineda M, Zhu YJ, Kim SY, Helman L, Meltzer P: **Immunohistochemical loss of succinate dehydrogenase subunit A (SDHA) in gastrointestinal stromal tumors (GISTs) signals SDHA germline mutation.** *Am J Surg Pathol* 2013, **37**:234–240.
16. Pantaleo MA, Astolfi A, Urbini M, Nannini M, Paterini P, Indio V, Saponara M, Formica S, Ceccarelli C, Casadio R, Rossi G, Bertolini F, Santini D, Pirini MG, Fiorentino M, Basso U, Biasco G, on behalf of GIST Study Group, University of Bologna, Bologna, Italy: **Analysis of all subunits, SDHA, SDHB, SDHC, SDHD, of the succinate dehydrogenase complex in KIT/PDGFR α wild-type GIST.** *Eur J Hum Genet* 2013. Epub online before print.
17. Rege TA, Wagner AJ, Corless CL, Heinrich MC, Hornick JL: **"Pediatric-type" gastrointestinal stromal tumors in adults: distinctive histology predicts genotype and clinical behavior.** *Am J Surg Pathol* 2011, **35**:495–504.
18. Chou A, Chen J, Clarkson A, Samra JS, Clifton-Bligh RJ, Hugh TJ, Gill AJ: **Succinate dehydrogenase-deficient GISTs are characterized by IGF1R overexpression.** *Mod Pathol* 2012, **25**:1307–1313.
19. Nannini M, Astolfi A, Paterini P, Urbini M, Santini D, Catena F, Indio V, Casadio R, Pinna AD, Biasco G, Pantaleo MA: **Expression of IGF-1 receptor in KIT/PDGFR α wild-type gastrointestinal stromal tumors with succinate dehydrogenase complex dysfunction.** *Future Oncol* 2013, **9**:121–126.
20. Belinsky MG, Rink L, Flieder DB, Jahromi MS, Schiffman JD, Godwin AK, Mehren M: **Overexpression of insulin-like growth factor 1 receptor and frequent mutational inactivation of SDHA in wild-type SDHB-negative gastrointestinal stromal tumors.** *Genes Chromosomes Cancer* 2013, **52**:214–224.
21. Lasota J, Wang Z, Kim SY, Helman L, Miettinen M: **Expression of the receptor for type I insulin-like growth factor (IGF1R) in gastrointestinal stromal tumors: an immunohistochemical study of 1078 cases with diagnostic and therapeutic implications.** *Am J Surg Pathol* 2013, **37**:114–119.
22. McWhinney SR, Pasini B, Stratakis CA: **Familial gastrointestinal stromal tumors and germ-line mutations.** *N Engl J Med* 2007, **357**:1054–1056.
23. Pasini B, McWhinney SR, Bei T, Matyakhina L, Stergiopoulos S, Muchow M, Boikos SA, Ferrando B, Pacak K, Assie G, Baudin E, Chompret A, Ellison JW, Briere JJ, Rustin P, Gimenez-Roqueplo AP, Eng C, Carney JA, Stratakis CA: **Clinical and molecular genetics of patients with the Carney-Stratakis syndrome and germline mutations of the genes coding for the succinate dehydrogenase subunits SDHB, SDHC, and SDHD.** *Eur J Hum Genet* 2008, **16**:79–88.
24. Zhang L, Smyrk TC, Young WF Jr, Stratakis CA, Carney JA: **Gastric stromal tumors in Carney triad are different clinically, pathologically, and behaviourally from sporadic gastric gastrointestinal stromal tumors: findings in 104 cases.** *Am J Surg Pathol* 2010, **34**:53–64.
25. Bajor J: **Gastrointestinal stromal tumors in patients with type 1 neurofibromatosis.** *Clin Exp Med J* 2009, **3**:247–254.
26. Agaram NP, Wong GC, Guo T, Maki RG, Singer S, Dematteo RP, Besmer P, Antonescu CR: **Novel V600E BRAF mutations in imatinib-naive and imatinib-resistant gastrointestinal stromal tumors.** *Genes Chromosomes Cancer* 2008, **47**:853–859.
27. Hostein I, Faur N, Primois C, Boury F, Denard J, Emile JF, Bringuier PP, Scoazec JY, Coindre JM: **BRAF mutation status in gastrointestinal stromal tumors.** *Am J Clin Pathol* 2010, **133**:141–148.
28. Daniels M, Lurkin I, Pauli R, Erbstößer E, Hildebrandt U, Hellwig K, Zschille U, Lüders P, Krüger G, Knolle J, Stengel B, Prall F, Hertel K, Lobeck H, Popp B, Theissig F, Wunsch P, Zwarthoff E, Agaimy A, Schneider-Stock R: **Spectrum of KIT/PDGFR α /BRAF mutations and Phosphatidylinositol-3-Kinase pathway gene alterations in gastrointestinal stromal tumors (GIST).** *Cancer Lett* 2011, **312**:43–54.
29. Pantaleo MA, Nannini M, Corless CL, Heinrich MC: **Quadruple wild-type (WT) GIST: defining the subset of GISTs that lack abnormalities of KIT, PDGFR α , SDH, and the RAS signalling pathway.** *Cancer Med* 2014. in press.
30. Pantaleo MA, Astolfi A, Nannini M, Ceccarelli C, Formica S, Santini D, Heinrich MC, Corless C, Dei Tos AP, Paterini P, Catena F, Maleddu A, Saponara M, Di Battista M, Biasco G: **Differential expression of neural markers in KIT and PDGFR α wild-type gastrointestinal stromal tumours.** *Histopathology* 2011, **59**:1071–1080.
31. Beadling C, Patterson J, Justusson E, Nelson D, Pantaleo MA, Hornick JL, Chacón M, Corless CL, Heinrich MC: **Gene expression of the IGF pathway family distinguishes subsets of gastrointestinal stromal tumors wild type for KIT and PDGFR α .** *Cancer Med* 2013, **2**:21–31.
32. Muff R, Born W, Fischer JA: **Calcitonin, calcitonin gene-related peptide, adrenomedullin and amylin: homologous peptides, separate receptors and overlapping biological actions.** *Eur J Endocrinol* 1995, **133**:17–20.
33. Hagner S, Stahl U, Grimm T, Stürzl M, Lang RE: **Expression of calcitonin receptor-like receptor in human vascular tumours.** *J Clin Pathol* 2006, **59**:1104–1107.
34. Mennel HD, Hallier-Neelens M, Hagner S, Benes L: **Two novel cell specific receptor proteins, CRLR and CD 117 in human glial tumors.** *Clin Neuropathol* 2006, **25**:107–114.
35. Benes L, Kappus C, McGregor GP, Bertalanffy H, Mennel HD, Hagner S: **The immunohistochemical expression of calcitonin receptor-like receptor (CRLR) in human gliomas.** *J Clin Pathol* 2004, **57**:172–176.
36. Koch M, Schulze J, Hansen U, Ashwood T, Keene DR, Brunken WJ, Burgeson RE, Bruckner P, Bruckner-Tuderman L: **A novel marker of tissue junctions, collagen XXII.** *J Biol Chem* 2004, **279**:22514–22521.
37. Reddy ES, Rao VN, Papas TS: **The erg gene: a human gene related to the ets oncogene.** *Proc Natl Acad Sci U S A* 1987, **84**:6131–6135.
38. Hart AH, Corrick CM, Tymms MJ, Hertzog PJ, Kola I: **Human ERG is a proto-oncogene with mitogenic and transforming activity.** *Oncogene* 1995, **10**:1423–1430.
39. Sorensen PH, Lessnick SL, Lopez-Terrada D, Liu XF, Triche TJ, Denny CT: **A second Ewing's sarcoma translocation, t(21;22), fuses the EWS gene to another ETS-family transcription factor, ERG.** *Nat Genet* 1994, **6**:146–151.
40. Sorensen PH, Lessnick SL, Lopez-Terrada D, Liu XF, Triche TJ, Denny CT: **Recurrent fusion of TMPRSS2 and ETS transcription factor genes in prostate cancer.** *Science* 2005, **310**:644–648.
41. Martens JH: **Acute myeloid leukemia: a central role for the ETS factor ERG.** *Int J Biochem Cell Biol* 2011, **43**:1413–1416.
42. Miettinen M, Wang ZF, Paetau A, Tan SH, Dobi A, Srivastava S, Sesterhenn I: **ERG transcription factor as an immunohistochemical marker for vascular endothelial tumors and prostatic carcinoma.** *Am J Surg Pathol* 2011, **35**:432–441.
43. Wang WL, Patel NR, Caragea M, Hogendoorn PC, López-Terrada D, Hornick JL, Lazar AJ: **Expression of ERG, an Ets family transcription factor, identifies ERG-rearranged Ewing sarcoma.** *Mod Pathol* 2012, **25**:1378–1383.
44. Miettinen M, Wang Z, Sarlomo-Rikala M, Abdullaev Z, Pack SD, Fetsch JF: **ERG expression in epithelioid sarcoma: a diagnostic pitfall.** *Am J Surg Pathol* 2013, **37**:1580–1585.
45. Thiele CJ, Li Z, McKee AE: **On Trk—the TrkB signal transduction pathway is an increasingly important target in cancer biology.** *Clin Cancer Res* 2009, **15**:5962–5967.
46. Brodeur GM, Nakagawara A, Yamashiro DJ, Ikegaki N, Liu XG, Azar CG, Lee CP, Evans AE: **Expression of TrkA, TrkB and TrkC in human neuroblastomas.** *J Neurooncol* 1997, **31**:49–55.
47. McGregor LM, McCune BK, Graff JR, McDowell PR, Romans KE, Yancopoulos GD, Ball DW, Baylin SB, Nelkin BD: **Roles of trk family neurotrophin**

- receptors in medullary thyroid carcinoma development and progression. *Proc Natl Acad Sci U S A* 1999, **96**:4540–4545.
48. Satoh F, Mimata H, Nomura T, Fujita Y, Shin T, Sakamoto S, Hamada Y, Nomura Y: **Autocrine expression of neurotrophins and their receptors in prostate cancer.** *Int J Urol* 2001, **8**:S28–S34.
 49. Harada T, Yatabe Y, Takeshita M, Koga T, Yano T, Wang Y, Giaccone G: **Role and relevance of TrkB mutations and expression in non-small cell lung cancer.** *Clin Cancer Res* 2011, **17**:2638–2645.
 50. Kupferman ME, Jiffar T, El-Naggar A, Yilmaz T, Zhou G, Xie T, Feng L, Wang J, Holsinger FC, Yu D, Myers JN: **TrkB induces EMT and has a key role in invasion of head and neck squamous cell carcinoma.** *Oncogene* 2010, **29**:2047–2059.
 51. Scwabas GM, Fujioka S, Schmidt C, Li Z, Frederick WA, Yang W, Yokoi K, Evans DB, Abbruzzese JL, Hess KR, Zhang W, Fidler IJ, Chiao PJ: **Overexpression of tropomyosin-related kinase B in metastatic human pancreatic cancer cells.** *Clin Cancer Res* 2005, **11**:440–449.
 52. Camoratto AM, Jani JP, Angeles TS, Maroney AC, Sanders CY, Murakata C, Neff NT, Vaught JL, Isaacs JT, Dionne CA: **CEP-751 inhibits TRK receptor tyrosine kinase activity in vitro exhibits anti-tumor activity.** *Int J Cancer* 1997, **72**:673–679.
 53. Miknyoczki SJ, Dionne CA, Klein-Szanto AJ, Ruggeri BA: **The novel Trk receptor tyrosine kinase inhibitor CEP-701 (KT-5555) exhibits antitumor efficacy against human pancreatic carcinoma (Panc1) xenograft growth and in vivo invasiveness.** *Ann N Y Acad Sci* 1999, **880**:252–262.
 54. Evans AE, Kesselbach KD, Yamashiro DJ, Ikegaki N, Camoratto AM, Dionne CA, Brodeur GM: **Antitumor activity of CEP-751 (KT-6587) on human neuroblastoma and medulloblastoma xenografts.** *Clin Cancer Res* 1999, **5**:3594–3602.
 55. Strock CJ, Park JI, Rosen M, Dionne C, Ruggeri B, Jones-Bolin S, Denmeade SR, Ball DW, Nelkin BD: **CEP-701 and CEP-751 inhibit constitutively activated RET tyrosine kinase activity and block medullary thyroid carcinoma cell growth.** *Cancer Res* 2003, **63**:5559–5563.
 56. Marshall JL, Kindler H, Deeken J, Bhargava P, Vogelzang NJ, Rizvi N, Luhtala T, Boylan S, Dordal M, Robertson P, Hawkins MJ, Ratain MJ: **Phase I trial of orally administered CEP-701, a novel neurotrophin receptor-linked tyrosine kinase inhibitor.** *Invest New Drugs* 2005, **23**:31–37.
 57. Wang T, Lamb ML, Scott DA, Wang H, Block MH, Lyne PD, Lee JW, Davies AM, Zhang HJ, Zhu Y, Gu F, Han Y, Wang B, Mohr PJ, Kaus RJ, Josey JA, Hoffmann E, Thress K, Macintyre T, Wang H, Omer CA, Yu D: **Identification of 4-aminopyrazolopyrimidines as potent inhibitors of Trk kinases.** *J Med Chem* 2008, **51**:4672–4684.
 58. Chan E, Mulkerin D, Rothenberg M, Holen KD, Lockhart AC, Thomas J, Berlin J: **A phase I trial of CEP-701 + gemcitabine in patients with advanced adenocarcinoma of the pancreas.** *Invest New Drugs* 2008, **26**:241–247.
 59. Chi P, Chen Y, Zhang L, Guo X, Wongvipat J, Shamu T, Fletcher JA, Dewell S, Maki RG, Zheng D, Antonescu CR, Allis CD, Sawyers CL: **ETV1 is a lineage survival factor that cooperates with KIT in gastrointestinal stromal tumours.** *Nature* 2010, **467**:849–853.
 60. Nannini M, Biasco G, Astolfi A, Pantaleo MA: **An overview on molecular biology of KIT/PDGFRα wild type (WT) gastrointestinal stromal tumours (GIST).** *J Med Genet* 2013, **50**:653–661.
 61. Trapnell C, Pachter L, Salzberg SL: **TopHat: discovering splice junctions with RNA-Seq.** *Bioinformatics* 2009, **9**:1105–1111.
 62. Li H, Handsaker B, Wysoker A, Fennell T, Ruan J, Homer N, Marth G, Abecasis G, Durbin R, 1000 Genome Project Data Processing Subgroup: **The Sequence Alignment/Map format and SAMtools.** *Bioinformatics* 2009, **25**:2078–2079.
 63. Anders S, Huber W: **Differential expression analysis for sequence count data.** *Genome Biol* 2010, **11**:R106.
 64. Robinson MD, McCarthy DJ, Smyth GK: **edgeR: a Bioconductor package for differential expression analysis of digital gene expression data.** *Bioinformatics* 2010, **26**:139–140.

doi:10.1186/1471-2407-14-685

Cite this article as: Nannini et al.: Integrated genomic study of quadruple-WT GIST (KIT/PDGFRα/SDH/RAS pathway wild-type GIST). *BMC Cancer* 2014 **14**:685.

Submit your next manuscript to BioMed Central and take full advantage of:

- Convenient online submission
- Thorough peer review
- No space constraints or color figure charges
- Immediate publication on acceptance
- Inclusion in PubMed, CAS, Scopus and Google Scholar
- Research which is freely available for redistribution

Submit your manuscript at
www.biomedcentral.com/submit

