



Published in final edited form as:

Pediatr Res. 2016 August ; 80(2): 197–203. doi:10.1038/pr.2016.82.

Altered Brain Function, Structure, and Developmental Trajectory in Children Born Late Preterm

Jane E. Brumbaugh, M.D.* , Amy L. Conrad¹, Jessica K. Lee², Ian J. DeVolder², M. Bridget Zimmerman³, Vincent A. Magnotta⁴, Eric D. Axelson², and Peggy C. Nopoulos^{1,2,5}

¹Stead Family Department of Pediatrics, University of Iowa, Iowa City, IA, USA

²Department of Psychiatry, University of Iowa, Iowa City, IA, USA

³Department of Biostatistics, University of Iowa, Iowa City, IA, USA

⁴Department of Radiology, University of Iowa, Iowa City, IA, USA

⁵Department of Neurology, University of Iowa, Iowa City, IA, USA

Abstract

Background—Late preterm birth (34-36 weeks' gestation) is a common occurrence with potential for altered brain development.

Methods—This observational cohort study compared children at age 6-13 years based on the presence or absence of the historical risk factor of late preterm birth. Children completed a battery of cognitive assessments and underwent magnetic resonance imaging of the brain.

Results—Late preterm children (n=52) demonstrated slower processing speed (p=0.035) and scored more poorly in visual-spatial perception (p=0.032) and memory (p=0.007) than full term children (n=74). Parents of late preterm children reported more behavioral difficulty (p=0.004). There were no group differences in cognitive ability or academic achievement. Imaging revealed similar intracranial volumes but less total tissue and more cerebrospinal fluid (p=0.004) for late preterm children compared to full term children. The tissue difference was driven by differences in the cerebrum (p=0.028) and distributed across cortical (p=0.051) and subcortical tissue (p=0.047). Late preterm children had a relatively smaller thalamus (p=0.012) than full term children. Only full term children demonstrated significant decreases in cortical tissue volume (p<0.001) and thickness (p<0.001) with age.

Conclusion—Late preterm birth may affect cognition, behavior, and brain structure well beyond infancy.

Users may view, print, copy, and download text and data-mine the content in such documents, for the purposes of academic research, subject always to the full Conditions of use:http://www.nature.com/authors/editorial_policies/license.html#terms

* (corresponding author) Stead Family Department of Pediatrics, University of Iowa, 200 Hawkins Drive, 8805 JPP, Iowa City, IA 52242, jane-brumbaugh@uiowa.edu, Phone (w): 319-384-6231, Phone (c): 651-260-5035, Fax: 319-356-4685.

Conflicts of Interest: The authors (Brumbaugh, Conrad, Lee, DeVolder, Zimmerman, Magnotta, Axelson, Nopoulos) declare no conflicts of interest.

Introduction

Late preterm (PT) birth (34-36 weeks' gestation) accounts for 8% of births in the United States each year, making late preterm birth a public health issue.^{1,2} Because a significant portion of brain growth occurs in the final weeks of gestation, late PT children may be susceptible to altered brain development.³ There is an increased incidence of school suspension, grade retention, and special education among late PT children compared to full term (FT) children (37-41 weeks' gestation).⁴⁻⁶ The neuroanatomical underpinnings for this discrepant early achievement in late PT children is not yet fully understood.

Magnetic resonance imaging (MRI) is one tool to understand what brain structures and functions show altered developmental patterns in children born PT. A meta-analysis of 15 brain imaging studies reflective of 818 very PT (<32 weeks' gestation) children found smaller total brain volumes with reduced grey and white matter volumes compared to FT children.⁷ Looking at children spared perinatal neurological injury, Lax et al. found decreased brain volume, cortical surface area, and cortical thickness as well as smaller basal ganglia and thalamic volumes in very PT children.⁸ Limited imaging studies focused on late PT infants have demonstrated smaller biparietal diameter, larger extra-axial spaces, and smaller gray matter volume at term corrected age compared to FT infants.^{9,10} Beyond the neonatal period, Rogers et al. found less total gray matter as well as smaller right temporal and parietal lobes in late PT children at school age.¹¹

The developmental trajectory of brain structures, in particular the cerebral cortex, may be more relevant to brain function, or cognition, than absolute size. The cortex has an inverted U-shaped trajectory in the typically developing brain across childhood and adolescence.¹² Reductions in the cortex are related to maturation, including synaptic pruning and myelination at the gray-white matter border.¹³ The trajectory of cortical thickness across age is more predictive of intelligence among typically developing children than absolute cortical thickness, supporting the importance of evaluating trajectories.¹⁴ Ment et al. performed serial MRI in very PT children at 8-12 years of age and showed less gray matter reduction with less white matter gain over time compared to FT children.¹⁵

To better understand what underlies the discrepant functional outcomes of late PT children, we performed a cohort study to evaluate brain function, structure, and cortical trajectories at school age using a multi-modal approach. We hypothesized late PT children would have subtle differences in cognition, behavior, and brain structure compared to their FT peers.

Results

Growth

By design, late PT children had a lower birth weight than FT children ($p < 0.001$) (**Table 1**). At testing, PT children were significantly shorter ($p < 0.001$) and lighter ($p = 0.024$). There was no significant difference in BMI z-score ($p = 0.332$) or head circumference ($p = 0.112$) between PT and FT children. There were significant group by sex interactions for weight z-score ($p = 0.036$) and BMI z-score ($p = 0.030$); differences were observed between PT and FT boys that were not observed between PT and FT girls. The mean weight z-score was less in

PT boys compared to FT boys ($p=0.002$) while there was no difference between PT and FT girls ($p=0.903$). PT boys also had a lower mean BMI z-score than FT boys ($p=0.034$) while there was no difference between PT and FT girls ($p=0.419$). There were no significant age by group interactions on the anthropometric measurements.

Behavior, Cognition, and Motor Skills

Parents of late PT children reported more behavioral problems ($p=0.004$) (**Table 2**). The group difference in the behavior domain was driven by the externalizing behaviors of hyperactivity/inattention ($p=0.009$) and aggression/opposition ($p=0.077$). There were no significant age by group or sex by group interactions on the behavioral difficulty domain.

Late PT children had similar cognitive ability as FT children ($p=0.262$) with no significant group difference when broken down into verbal comprehension ($p=0.757$) and perceptual reasoning ($p=0.163$). Late PT children demonstrated slower processing speed than FT children ($p=0.035$). Functionally, there were no differences between PT and FT children on academic achievement measures of reading ($p=0.597$) or arithmetic ($p=0.997$). There was no significant age by group or sex by group interactions for the cognitive ability, processing speed, or academic achievement domains.

PT children performed more poorly than FT children in two neuropsychological domains: visual-spatial perception ($p=0.032$) and memory ($p=0.007$) (**Table 2**). There were no significant group differences in the visual-motor integration ($p=0.133$), language ($p=0.299$), or executive function ($p=0.616$) domains. There were no significant age by group or sex by group interactions on the neuropsychological domains.

Motor skills assessment revealed no group difference between PT and FT children ($p=0.406$). There were no significant age by group or sex by group interactions on the motor domain.

Brain Structure

The late PT cohort had a similar ICV as the FT cohort ($p=0.306$) (**Table 3**). However, the late PT cohort had less total tissue ($p=0.004$) and more cerebrospinal fluid ($p=0.004$) contained within the ICV. The low total tissue volume was not tissue-specific to white or gray matter. Total white matter ($p=0.182$) and total gray matter ($p=0.310$) were descriptively lower in the PT group. The difference in total tissue was driven by a difference in the cerebrum ($p=0.028$) that was distributed between both the cortex ($p=0.051$) and subcortex ($p=0.047$); PT children had smaller cortical and subcortical tissue volumes. There was no difference in the relative cerebellar ($p=0.702$) or brainstem volume ($p=0.137$) between groups.

For cortical gray matter, there were three measures of interest: tissue volume, surface area, and thickness. The relative cortical tissue volume was not statistically different for FT and late PT children ($p=0.133$), although there was less relative cortical surface area for late PT children ($p=0.036$) than FT children. There was no significant difference in the cortical thickness between the two groups ($p=0.789$).

While there was no main effect of group on cortical tissue volume or thickness, both the relative cortical volume ($R^2 = 0.029$, standardized $\beta = 0.210$, 95% CI 0.04, 6.24, $p = 0.047$) and cortical thickness ($R^2 = 0.027$, standardized $\beta = 0.204$, 95% CI -0.001 , 0.034, $p = 0.060$) demonstrated an effect of age that varied by group. Among FT children, the relative cortical tissue volume decreased with age ($\beta_{FT} = -0.509$, 95% CI -5.89 , -2.49 , $p < 0.001$) (**Figure 1**). There was no such effect of age on the relative cortical volume among late PT children ($\beta_{PT} = -0.113$, 95% CI -3.93 , 1.72, $p = 0.436$). Cortical thickness also decreased with age among FT children ($\beta_{FT} = -0.468$, 95% CI -0.03 , -0.01 , $p < 0.001$) while no such effect of age on cortical thickness was observed among late PT children ($\beta_{PT} = -0.069$, 95% CI -0.02 , 0.01, $p = 0.634$) (**Figure 2**).

Within the cerebrum, there was no main effect of group on relative white matter volume (95% CI -0.003 , 0.010, $p = 0.272$) and no interaction between age and group on cerebral white matter volume ($R^2 = 0.008$, standardized $\beta = -0.110$, 95% CI -0.005 , 0.001, $p = 0.273$). Both PT and FT children showed gains in cerebral white matter over time ($\beta_{FT} = 0.548$, 95% CI 0.003, 0.007, $p < 0.001$; $\beta_{PT} = 0.322$, 95% CI 0.0003, 0.0061, $p = 0.027$).

For subcortical structures, PT children had a relatively smaller thalamus than FT children ($p = 0.012$). Other subcortical structures relative to ICV did not differ between PT and FT children. There were no age by group interactions affecting subcortical structures. There were no sex by group interactions affecting any brain structural measures.

Discussion

This study provides a broad perspective on brain development following late PT birth with functional and structural measures. Functionally, parents of late PT children reported more behavioral difficulties. Late PT children demonstrated more difficulty with processing speed, visual-spatial perception, and memory compared to FT children. In contrast, late PT and FT children demonstrated similar performance in language, executive function, and motor skills. Structurally, PT children had less total tissue and more CSF than FT children. PT children did not demonstrate the effects of age on cortical tissue volume or cortical thickness that were observed in FT children. Late PT birth affects brain function and structure well beyond infancy, an impact that may not be apparent on global measures of cognitive ability.

This study brings attention to long-term growth for late PT children. The late PT cohort was shorter and lighter at school age than the FT cohort. Historically, late PT birth has not been considered a risk factor for altered growth in childhood. Recent data from Japan found late PT children to be two-fold more likely to have short stature at 3 years of age compared to FT children.¹⁶ Despite greater differences in height than weight, the late PT and FT cohorts had similar mean BMI, a relevant negative finding in an era of childhood obesity. Linear growth discrepancies are clinically significant with a relationship between linear growth and neurodevelopmental outcome demonstrated in the very low birth weight preterm population.¹⁷

In terms of behavior, parents provided insights into behavior that may contribute to discrepant outcomes for late PT and FT children. There is evidence from larger populations

that attention deficit hyperactivity disorder (ADHD) affects late PT children more often than FT children. In a Swedish cohort study, late PT children had 30-40% greater likelihood of ADHD medication use compared to FT children.¹⁸

For cognition, late PT children had more difficulty on measures of processing speed and memory. This is consistent with the literature on very PT children in whom discrepant processing speed and working memory relative to FT peers account for differences in academic achievement and need for special education.¹⁹ For this sample, there was no difference in academic achievement as assessed by a decoding measure and a computation measure. However, untimed academic achievement measures may not reflect functional or clinical significance, particularly when late PT children demonstrated a slower processing speed. Late PT children had more difficulties on visual-spatial perception and visual memory tasks than on language or verbal tasks, a pattern observed in very PT cohorts as well.²⁰ In contrast, Baron et al. found that late PT children had more difficulty on tasks of visual-motor integration and had difficulty with verbal fluency at 3 years of age compared to FT children.²¹

MRI demonstrated the presence of more CSF in the late PT brain at school age. This previously was reported at term corrected age using more crude assessment of CSF.¹⁰ The lack of tissue specificity in the tissue decrement among late PT children suggests that there may be a global effect impacting gray and white matter alike. Shifts in tissue composition were less pronounced in the late PT cohort compared to the FT cohort with less gray matter loss and less white matter gain among late PT children across the age span.

In contrast to previous work, we found a difference in cortical surface area but not in cortical thickness for late PT relative to FT children.¹¹ We built upon the work by Rogers et al. by analyzing the developmental trajectory of cortex with age. FT children demonstrated cortical thinning with age while late PT children lacked cortical thinning across the same age span. Late PT children may have more rapid pruning at a younger age. Alternatively, PT children may have delayed or absent pruning resulting in a lack of cortical thinning.

Lastly, the thalamus, a brain region involved in sensory and motor signaling, was relatively smaller in the PT cohort compared to the FT cohort after controlling for total tissue volume. This is consistent with the pattern observed in very PT samples compared to full term children.^{22,23}

Strengths of this study include building on the limited literature on brain structure in the late PT population at school age.¹¹ The brain structural data provided preliminary evidence for structural differences in the late PT brain that may underlie differences in behavior and cognition. Second, the late PT cohort came from an enriched background suggesting that the differences between PT and FT children were related to prematurity rather than a disadvantaged social situation associated with prematurity.²⁴ Third, all children were scanned on the same scanner, thereby avoiding the introduction of tissue volume variation with multiple scanners. Finally, the breadth of assessment tools used provided a comprehensive profile of behavior, cognition, and motor skills.

Limitations of this study included the relatively small sample size, ambidirectional rather than longitudinal design, and retrospective collection of birth history data. There were multiple examiners with no formal inter-rater reliability testing performed. A licensed psychologist oversaw training of examiners with a period of direct observation followed by mentored administration of tests prior to independent administration. Additionally, the brain structural measures that differed between groups were relatively global (e.g. total tissue volume). Meanwhile, the cognitive findings that differed were relatively specific (e.g. visual-spatial perception). This made it challenging to demonstrate direct structure-function relationships.

In summary, this cohort of late PT children demonstrated more difficulty with processing speed, visual-spatial perception, and memory. Late PT children had less total brain tissue, more cerebrospinal fluid, and smaller thalami compared to FT children. Together, the behavioral, cognitive, and structural findings suggest that late PT birth should be considered a potential insult on the developing brain given the differences persisting at school age.

Methods

We identified late PT children born between 2000 and 2006 through the University of Iowa Neonatal Admissions Registry. Children were recruited at 6 to 13 years of age by letter. If parents expressed interest, a telephone screen was conducted to confirm the child's eligibility. We compared late PT children to healthy, typically developing FT children born between 1996 and 2006 who were recruited independently for another study involving the same behavioral and cognitive assessments and using the same MRI machine and acquisition sequences. Parents of FT children consented to share data for additional investigations on brain development. Exclusion criteria included multiple birth, major medical disease, neurological injury, 5-minute Apgar score <7, neonatal sepsis, and birth weight <1500 g for late PT children and <2500 g for FT children.

Written consent was obtained from a parent. Children ages 8-13 years provided written assent. Six and seven-year-old children provided verbal assent. Children and parents were compensated for their participation. The study was approved by the University of Iowa Institutional Review Board.

There were 52 children in the late PT cohort and 74 children in the FT cohort for anthropometric, behavioral, cognition, and motor skills assessment (**Table 1**). Comparison of demographic variables between groups showed no difference in sex distribution ($p=0.523$), mean age at participation ($p=0.146$), or socioeconomic status using a modified Hollingshead Four-Factor Index of Socioeconomic Status ($p=0.647$).²⁵ The modified index includes parent occupation, sex, marital status, and one Likert scale question pertaining to household wealth and education. Higher values indicate lower socioeconomic status on this scale. For imaging analysis, 48 late PT and 72 FT children successfully completed the MRI scan. Children with incomplete MRI data had motion artifact (3 late PT children) or had the scan sequences stopped early or not attempted (1 late PT, 2 FT children).

Outcome Measures

Parents completed the Pediatric Behavior Scale-30 (PBS).²⁶ The behavioral difficulty domain was calculated from z-scores for the PBS. On the z-score scale, the mean is 0.00 and the standard deviation is 1.00. Scores ranging from -0.99 to 0.99 are within the average range. Children's cognitive ability was assessed with four subtests of the Wechsler Intelligence Scale for Children (WISC-IV): Block Design, Matrix Reasoning, Vocabulary, and Similarities.²⁷ Z-scores for the General Ability Index, Verbal Comprehension Index, and Perceptual Reasoning Index were calculated. The processing speed domain was calculated from z-scores for the WISC-IV Processing Speed Index. Academic achievement in reading and mathematics was measured with the Wide Range Achievement Test.²⁸ The academic achievement domain score was calculated from z-scores for the reading and mathematics measures. Neuropsychological assessments were divided into five domains: language (Boston Naming Test²⁹; Delis-Kaplan Executive Function Systems (DKEFS) Letter Fluency, Category Fluency, Color Naming, and Word Reading³⁰) (i), visual-spatial perception (Benton Judgment of Line Orientation³¹) (ii); visual-motor integration (Bender Visual Motor Gestalt Test³²) (iii), memory (Wechsler Intelligence Scale for Children-III Spatial Span³³; Color Span Test³⁴; Children's Memory Scale Dot Locations and Word Lists³⁵) (iv), and executive function (Conners' Continuous Performance Test³⁶; DKEFS Category Switching, Inhibition, and Sorting³⁰) (v). Domain scores for language, visual-spatial perception, visual-motor integration, memory, and executive function were calculated using z-scores of measures within the respective domains. For motor skills assessment, children completed the Grooved Pegboard Test for fine motor skills and the Physical and Neurological Examination for Soft Signs (PANESS) for measures of axial control, dysrhythmia, sequencing, repetitive movements, and overflow movements.^{37,38} The motor skills domain score was calculated using z-scores from the Grooved Pegboard Test and PANESS.

Image Acquisition and Analysis

Imaging was performed without sedation in a research-dedicated Siemens 3T TIM Trio scanner using a 12 channel head coil. Prior to the scan, children completed a session in an MRI simulator to familiarize them with the experience. T1 weighted images were acquired using an MP-RAGE sequence (TR=2300ms, TE=2.82ms, TI=1100ms, slice flip angle=10 degrees, FOV=180×180×224, matrix=256×256×240mm, and bandwidth=200Hz/pixel). Next, T2 weighted images were acquired using a 3D variable flip angle SPACE sequence (TR=9910ms, TE=430ms, FOV= 180×180×192mm, and matrix=256×256×128mm). Anatomical images were analyzed using the BRAINS software automated workup pipeline.³⁹ This pipeline included spatial alignment, tissue classification, and automated labeling. Automated results were checked for validity by a trained technician. A discriminant tissue classification was performed, and a brain mask was created using an artificial neural network. Brain measures included intracranial volume (ICV), which was separated into total tissue and total CSF volume. Total tissue then was separated into volumes for cerebrum (cerebral cortex, cerebral white matter), cerebellum, and brainstem. The cerebrum was further broken down into the four cerebral lobes, each with component gray and white matter volumes. Artificial neural networks were utilized to measure subcortical structures.⁴⁰ In addition, cortical reconstruction and volumetric segmentation were performed with FreeSurfer software version 5.1. Using FreeSurfer, cortical tissue

volume, surface area, and thickness were calculated for the cortex as a whole and the four cerebral lobes.

Statistical Analysis

Statistical analysis performed with SPSS v22 (IBM Corporation, Armonk, NY). Analysis of covariance (ANCOVA) was performed for continuous measures, and Pearson Chi-square was used for categorical measures. All behavioral, cognitive, motor, and brain measures were analyzed with age and sex as covariates. To avoid a type II error, the behavioral, cognitive, and motor assessments were grouped into domains for analysis to minimize the number of assessments. Height was also treated as a covariate for ICV in order to control for overall body size. For all other brain measures, ratios were utilized to account for ICV. Data distribution was checked for normality using the Shapiro-Wilk test. When indicated, analyses were repeated using rank order for non-parametric data. Linear regression was performed to evaluate for age by group and sex by group interactions. An alpha level of 0.10 was used as the threshold to explore any age by group or sex by group interaction. An alpha level of 0.05 was used as the threshold for statistical significance for main effects.

Acknowledgments

The authors acknowledge the children and their parents for their participation as well as Ms. Andrea M. Aerts, B.B.S., and Christine Saenz, B.A., for their facilitation of research visits. The research was funded by the Stead Family Department of Pediatrics through funds awarded to Dr. Brumbaugh and by the National Institutes of Health through a Child Health Research Career Development Award (5K12HD02774822, PI Raphael Hirsch, MD).

References

1. Engle WA, Tomashek KM, Wallman C. "Late-preterm" infants: a population at risk. *Pediatrics*. 2007; 120:1390–401. [PubMed: 18055691]
2. Martin JA, Hamilton BE, Osterman MJK, Curtin SC, Mathews TJ. Births: final data for 2012. *Natl Vital Stat Rep*. 2015; 64:1–68.
3. Kinney HC. The near-term (late preterm) human brain and risk for periventricular leukomalacia: a review. *Semin Perinatol*. 2006; 30:81–8. [PubMed: 16731282]
4. Morse SB, Zheng H, Tang Y, Roth J. Early school-age outcomes of late preterm infants. *Pediatrics*. 2009; 123:e622–9. [PubMed: 19336353]
5. Lipkind HS, Slopen ME, Pfeiffer MR, McVeigh KH. School-age outcomes of late preterm infants in New York City. *Am J Obstet Gynecol*. 2012; 206:222:e1–6. [PubMed: 22381605]
6. Chan E, Quigley MA. School performance at age 7 years in late preterm and early term birth: a cohort study. *Arch Dis Child Fetal Neonatal Ed*. 2014; 99:F451–7. [PubMed: 24966128]
7. de Kieviet JF, Zoetebier L, van Elburg RM, Vermeulen RJ, Oosterlaan J. Brain development of very preterm and very low-birthweight children in childhood and adolescence: a meta-analysis. *Dev Med Child Neurol*. 2012; 54:313–23. [PubMed: 22283622]
8. Lax ID, Duerden EG, Lin SY, et al. Neuroanatomical consequences of very preterm birth in middle childhood. *Brain Struct Funct*. 2013; 218:575–85. [PubMed: 22572806]
9. Munakata S, Okada T, Okahashi A, et al. Gray matter volumetric MRI differences late-preterm and term infants. *Brain Dev*. 2013; 35:10–6. [PubMed: 22285528]
10. Walsh JM, Doyle LW, Anderson PJ, Lee KJ, Cheong JL. Moderate and late preterm birth: effect on brain size and maturation at term-equivalent age. *Radiology*. 2014; 273:232–40. [PubMed: 24914576]
11. Rogers CE, Barch DM, Sylvester CM, et al. Altered gray matter volume and school age anxiety in children born late preterm. *J Pediatr*. 2014; 165:928–35. [PubMed: 25108541]

12. Lenroot RK, Gogtay N, Greenstein DK, et al. Sexual dimorphism of brain developmental trajectories during childhood and adolescence. *Neuroimage*. 2007; 36:1065–73. [PubMed: 17513132]
13. Sowell ER, Thompson PM, Tessner KD, Toga AW. Mapping continued brain growth and gray matter density reduction in dorsal frontal cortex: Inverse relationships during postadolescent brain maturation. *J Neurosci*. 2001; 21:8819–29. [PubMed: 11698594]
14. Shaw P, Greenstein D, Lerch J, et al. Intellectual ability and cortical development in children and adolescents. *Nature*. 2006; 440:676–9. [PubMed: 16572172]
15. Ment LR, Kesler S, Vohr B, et al. Longitudinal brain volume changes in preterm and term control subjects during late childhood and adolescence. *Pediatrics*. 2009; 123:503–11. [PubMed: 19171615]
16. Nagasaka M, Morioka I, Yokota T, et al. Incidence of short stature at 3 years of age in late preterm infants: a population-based study. *Arch Dis Child*. 2015; 100:250–4. [PubMed: 25260516]
17. Ramel SE, Demerath EW, Gray HL, Younge N, Boys C, Georgieff MK. The relationship of poor linear growth velocity with neonatal illness and two-year neurodevelopment in preterm infants. *Neonatology*. 2012; 102:19–24. [PubMed: 22441508]
18. Lindstrom K, Lindblad F, Hjern A. Preterm birth and attention-deficit/hyperactivity disorder in schoolchildren. *Pediatrics*. 2011; 127:858–65. [PubMed: 21502231]
19. Mulder H, Pitchford NJ, Marlow N. Processing speed and working memory underlie academic attainment in very preterm children. *Arch Dis Child Fetal Neonatal Ed*. 2010; 95:F267–72. [PubMed: 20488865]
20. Clark CA, Woodward LJ. Neonatal cerebral abnormalities and later verbal and visuospatial working memory abilities of children born very preterm. *Dev Neuropsychol*. 2010; 35:622–42. [PubMed: 21038157]
21. Baron IS, Erickson K, Ahronovich MD, Coulehan K, Baker R, Litman FR. Visuospatial and verbal fluency relative deficits in 'complicated' late-preterm preschool children. *Early Hum Dev*. 2009; 85:751–4. [PubMed: 19879072]
22. Nosarti C, Giouroukou E, Healy E, et al. Grey and white matter distribution in very preterm adolescents mediates neurodevelopmental outcome. *Brain*. 2008; 131:205–17. [PubMed: 18056158]
23. Taylor HG, Filipek PA, Juranek J, Bangert B, Minich N, Hack M. Brain volumes in adolescents with very low birth weight: effects on brain structure and associations with neuropsychological outcomes. *Dev Neuropsychol*. 2011; 36:96–117. [PubMed: 21253993]
24. Parker S, Greer S, Zuckerman B. Double jeopardy: the impact of poverty on early child development. *Pediatr Clin North Am*. 1988; 35:1227–40. [PubMed: 3059296]
25. Hollingshead, AA. Four-factor index of social status.. In: Smith, P., editor. *Yale Journal of Sociology*. Vol. 8. Yale University; New Haven, CT: 2011. p. 21-51.
26. Lindgren, SD.; Koepl, GK. Assessing child behavior problems in a medical setting: Development of the Pediatric Behavior Scale.. In: Prinz, RJ., editor. *Advances in behavioral assessment of children and families*. JAI Press, Inc.; Greenwich, CT: 1987. p. 57-90.
27. Wechsler, D.; Kaplan, E.; Fein, D., et al. *Wechsler Intelligence Scale for Children Integrated: Administration and Scoring Manual*. 4th ed.. Harcourt Assessment, Inc.; San Antonio, TX: 2004.
28. Wilkinson, GS.; Robertson, GJ. *Wide Range Achievement Test*. 4th ed.. Psychological Assessment Resources, Inc.; Lutz, FL: 2006.
29. Kaplan, E.; Goodglass, H.; Weintraub, S. *Boston Naming Test*. Lea & Febiger; Philadelphia, PA: 1983.
30. Delis, DC.; Kaplan, E.; Kramer, JH. *Delis-Kaplan Executive Function System*. The Psychological Corporation; San Antonio, TX: 2001.
31. Benton, AL.; Hamsher, K.; Sivan, AB. *Multilingual Aphasia Examination*. 3rd ed.. AJA Associates; Iowa City, IA: 1994.
32. Brannigan, GG.; Decker, SL. *Bender Visual-Motor Gestalt Test*. 2nd ed.. Riverside Publishing; Itasca, IL: 2003.
33. Wechsler, D. *Wechsler Intelligence Scale for Children Manual*. 3rd ed.. The Psychological Corporation; Washington, D.C.: 1991.

34. Richman, LC.; Lindgren, SD. The Color Span Test. University of Iowa; Iowa City, IA: 1978.
35. Cohen, MJ. Children's Memory Scale. The Psychological Corporation; San Antonio, TX: 1997.
36. Conners, CK. Conners' Continuous Performance Test II: Computer Program for Windows Technical Guide and Software Manual. Multi-Health Systems; North Tonawanda, NY: 2000.
37. Grooved Pegboard Test User Instructions. Lafayette Instrument; Lafayette, IN: 2002.
38. Denckla MB. Revised Neurological Examination for Subtle Signs. *Psychopharmacological Bulletin*. 1985; 21:773–800.
39. Pierson R, Johnson H, Harris G, et al. Fully automated analysis using BRAINS: AutoWorkup. *Neuroimage*. 2011; 54:328–36. [PubMed: 20600977]
40. Powell S, Magnotta VA, Johnson H, Jammalamadaka VK, Pierson R, Andreasen NC. Registration and machine learning-based automated segmentation of subcortical and cerebellar brain structures. *Neuroimage*. 2008; 39:238–47. [PubMed: 17904870]

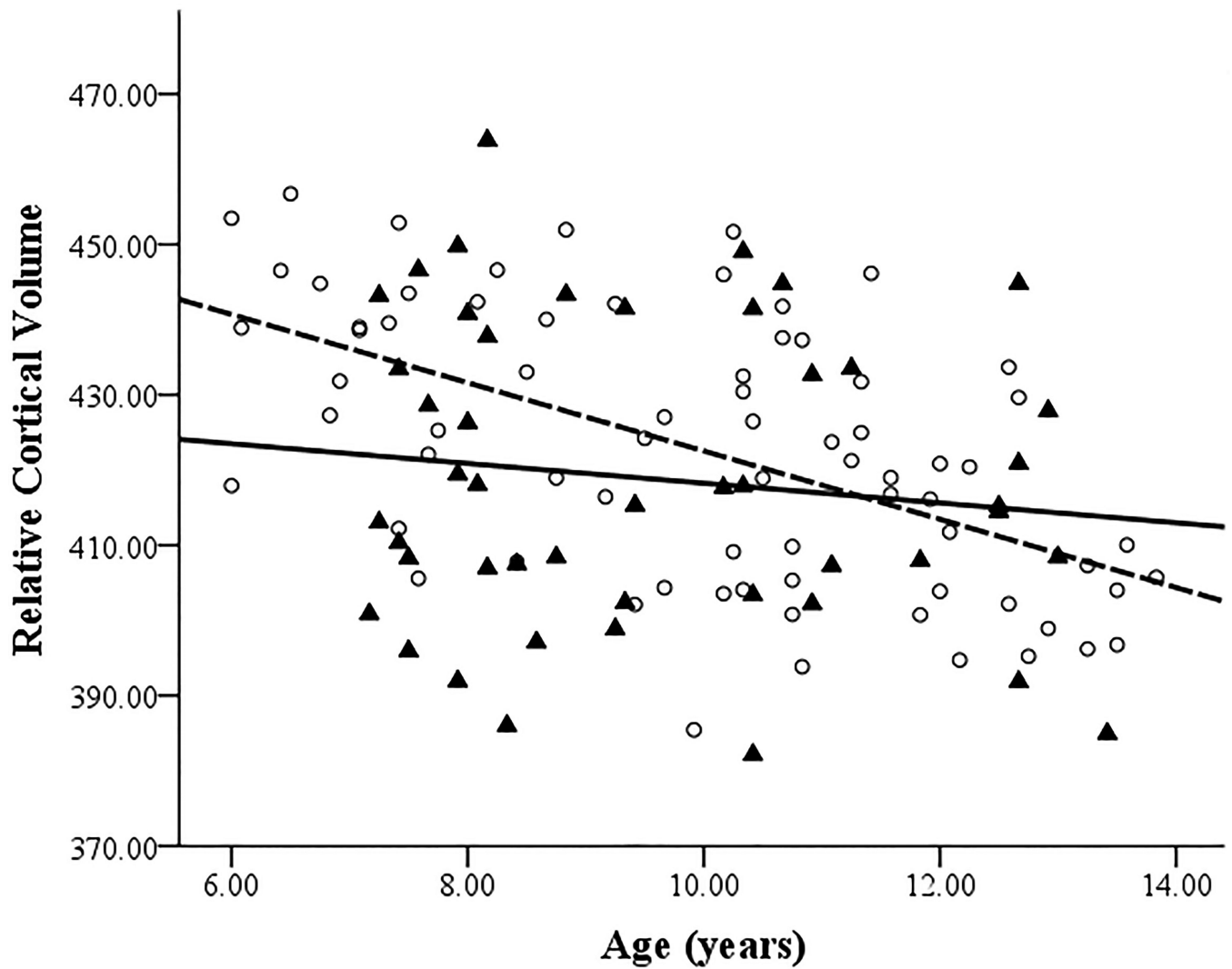


Figure 1. Developmental trajectory of cortical volume

Relative cortical tissue volume decreased with age in full term children more than in late preterm children ($z=-2.34$, $p=0.019$). Open circles and dashed line represent full term children. Filled triangles and solid line represent late preterm children.

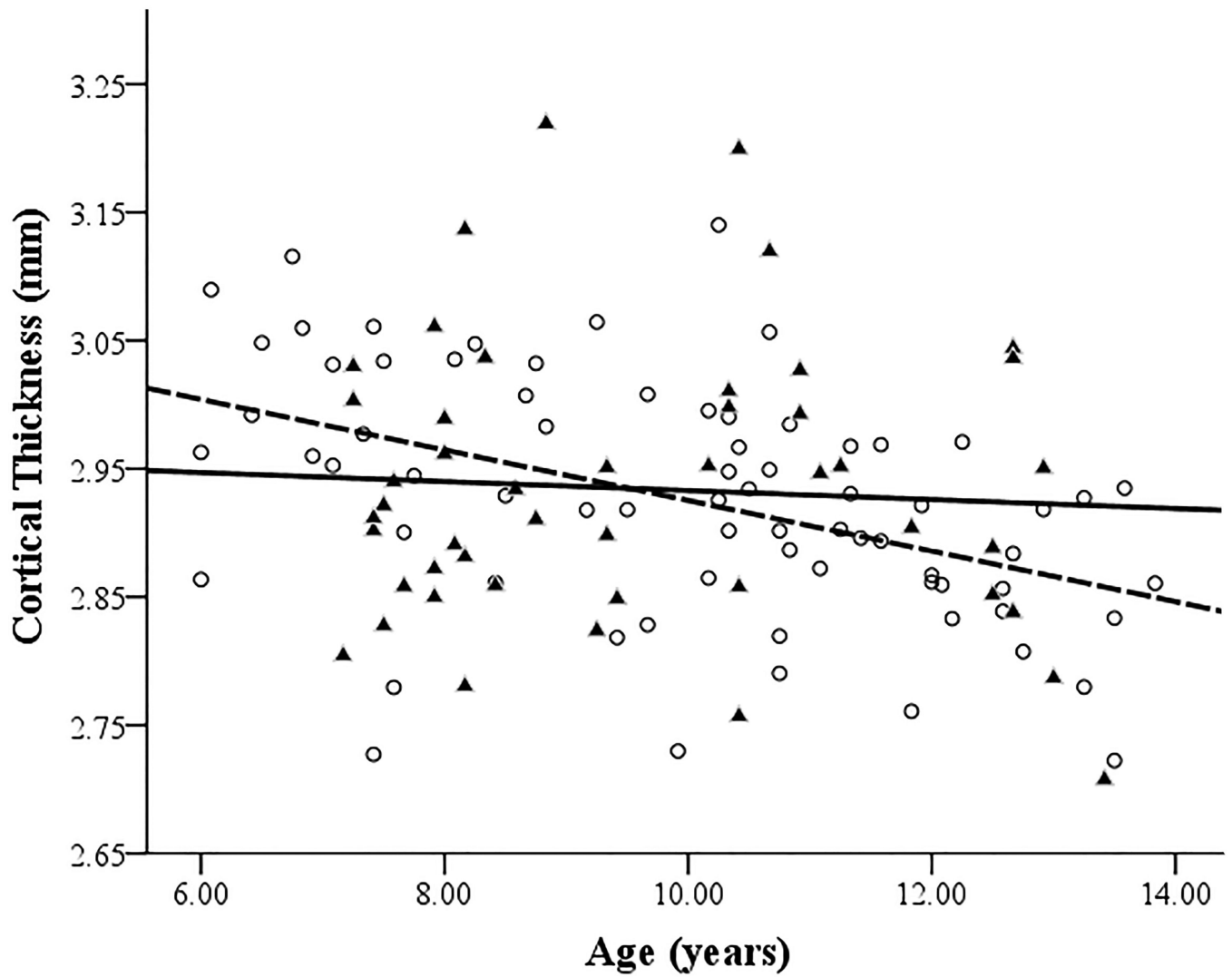


Figure 2. Developmental trajectory of cortical thickness

Cortical thickness decreased with age in full term children more than in late preterm children ($z=-2.29$, $p=0.022$). Open circles and dashed line represent full term children. Filled triangles and solid line represent late preterm children.

Table 1

Demographics and anthropometrics

Late preterm children were shorter and lighter than full term children at school age.

	Full Term (n=74)		Late Preterm (n=52)		Mean Difference 95% CI ^d	P
	Mean	95% CI	Mean	95% CI		
Demographics						
Birth weight ^b (kg)	3.59	3.48, 3.70	2.70	2.57, 2.83	0.72, 1.05	<0.001
Age ^b (y)	10.00	9.52, 10.48	9.44	8.87, 10.01	-0.20, 1.30	0.146
SES ^c	2.26	2.14, 2.38	2.30	2.16, 2.45	-0.23, 0.15	0.647
Male sex ^d (%)	37 (50.0)	-	29 (55.8)	-	-	0.523
Caucasian, non-Hispanic ^d (%)	62 (83.8)	-	45 (88.2)	-	-	0.486
Anthropo metrics						
Height (cm)	141.76	140.36, 143.15	137.77	136.10, 139.44	1.80, 6.17	<0.001
Height z-score	0.64	0.43, 0.85	-0.06	-0.32, 0.20	0.34, 1.00	<0.001
Weight (kg)	37.64	35.47, 39.81	36.08	33.48, 38.67	-1.84, 4.97	0.364
Weight z-score	0.57	0.34, 0.80	0.16	-0.12, 0.43	0.06, 0.78	0.024
BMI ^e (kg/m ²)	18.25	17.42, 19.07	18.36	17.37, 19.35	-1.41, 1.18	0.860
BMI z-score	0.39	0.16, 0.62	0.21	-0.06, 0.49	-0.19, 0.54	0.332
OFC ^f (cm)	54.59	54.02, 55.15	53.87	53.19, 54.55	-0.17, 1.60	0.112

^a Full term relative to late preterm

^b Adjusted for sex

^c SES: socioeconomic status based on Four Factor Hollingshead Index with higher values associated with a lower status

^d Number (percentage) reported for dichotomous variables

^e BMI: Body Mass Index

^f OFC: Orbitofrontal circumference

Table 2

Functional Domains

Late preterm children had more difficulties in behavior, processing speed, visual-spatial perception, and memory.

	Mean (SD)		Unadjusted p	Adjusted for Age and Sex		
	Full Term	Late Preterm		Mean Difference ^a	95% CI	P
Behavioral Difficulty	0.23 (0.90)	-0.33 (1.05)	0.002	0.51	0.16, 0.86	0.004
Aggression/Opposition	0.14 (0.94)	-0.20 (1.05)	0.058	0.32	-0.04, 0.69	0.077
Hyperactivity/Inattention	0.22 (0.75)	-0.31 (1.21)	0.003	0.46	0.12, 0.80	0.009
Depression/Anxiety	0.12 (1.00)	-0.17 (0.99)	0.111	0.27	-0.09, 0.64	0.137
Physical Health	0.09 (0.99)	-0.13 (1.01)	0.213	0.27	-0.09, 0.63	0.138
WISC-IV Global Abilities Index	0.83 (1.00)	0.62 (1.32)	0.303	0.24	-0.18, 0.65	0.262
Verbal Comprehension Index	0.67 (0.95)	0.62 (1.26)	0.783	0.06	-0.34, 0.46	0.757
Perceptual Reasoning Index	0.66 (0.92)	0.43 (1.18)	0.216	0.27	-0.11, 0.64	0.163
Processing Speed	0.34 (0.98)	-0.03(1.00)	0.042	0.38	0.03, 0.74	0.035
Academic Achievement	0.07 (0.97)	-0.11 (0.95)	0.301	-0.03	-0.24, 0.17	0.748
Reading	0.06 (1.00)	-0.08 (1.00)	0.459	-0.07	-0.31, 0.18	0.597
Arithmetic	-0.09 (1.00)	-0.13 (0.99)	0.213	-0.0004	-0.21, 0.21	0.997
Visual-Spatial Perception	0.18 (0.90)	-0.25 (1.09)	0.017	0.32	0.03, 0.61	0.032
Visual-Motor Integration	-0.08 (0.79)	0.12 (1.24)	0.263	-0.27	-0.63, 0.08	0.133
Memory	0.16 (0.64)	-0.22 (0.69)	0.002	0.27	0.08, 0.47	0.007
Language	0.14 (0.79)	-0.14 (0.77)	0.055	0.11	-0.09, 0.30	0.299
Executive Function	0.24 (0.74)	-0.12 (0.77)	0.022	0.06	-0.18, 0.31	0.616
Motor Skills	0.092 (0.67)	-0.13 (0.70)	0.082	0.08	-0.10, 0.25	0.406

Note: Reported values are z-scores where higher values reflect better functioning.

^aFull term relative to late preterm

Table 3

Structural measures

Late preterm children had less tissue, more cerebrospinal fluid, and smaller thalami than full term children.

	Full Term (n=72) ^a		Preterm (n=48)		Mean Difference 95% CI ^c	P
	Mean ^b	95% CI	Mean ^b	95% CI		
ICV^d	1383.143	1352.503, 1413.784	1409.225	1371.238, 1447.211	-76.288, 24.124	0.306
Total Volumes^e						
Tissue	0.964	0.961, 0.967	0.956	0.952, 0.960	0.003, 0.013	0.004
White Matter	0.328	0.324, 0.333	0.324	0.318, 0.329	-0.002, 0.012	0.182
Gray Matter	0.635	0.632, 0.639	0.632	0.628, 0.637	-0.003, 0.009	0.310
CSF	0.036	0.033, 0.039	0.044	0.040, 0.048	-0.013, -0.003	0.004
Tissue Measures						
Cerebrum	0.847	0.844, 0.851	0.841	0.837, 0.845	0.001, 0.012	0.028
Cerebellum	0.103	0.101, 0.105	0.103	0.101, 0.105	-0.002, 0.003	0.702
Brainstem ^f	2.422	2.362, 2.482	2.351	2.278, 2.424	-0.023, 0.166	0.137
Cerebrum Measures^f						
Cortical Tissue	77.593	77.267, 77.919	77.078	76.678, 77.478	-0.003, 1.032	0.051
Subcortical Tissue	7.128	7.069, 7.187	7.033	6.962, 7.105	0.001, 0.188	0.047
Cortical Gray Measures						
Volume ^g	422.979	418.951, 427.027	418.039	413.022, 423.055	-1.523, 11.405	0.133
Surface Area ^g	124.834	123.833, 125.834	123.124	121.885, 124.364	0.112, 3.307	0.036
Thickness	2.927	2.905, 2.949	2.932	2.904, 2.959	-0.040, 0.031	0.789
Subcortical Structures^f						
Hippocampus	0.265	0.257, 0.272	0.259	0.250, 0.269	-0.006, 0.018	0.348
Thalamus	0.924	0.908, 0.941	0.890	0.870, 0.911	0.008, 0.060	0.012
Caudate	0.537	0.522, 0.553	0.522	0.503, 0.540	-0.009, 0.040	0.205
Putamen	0.797	0.781, 0.813	0.793	0.774, 0.813	-0.021, 0.029	0.757

	Full Term (n=72) ^a		Preterm (n=48)		Mean Difference 95% CI ^c	P
	Mean ^b	95% CI	Mean ^b	95% CI		
Globus Pallidus	0.189	0.185, 0.192	0.187	0.182, 0.192	-0.005, 0.009	0.537

^aMean (95% CI) for brain structural measures

^bAdjusted for age and sex

^cFull term relative to late preterm

^dICV analysis controlled for height

^eVolumes reported as ratios to ICV except for cortical gray volume

^fBrainstem, cerebrum measures, and subcortical structures and their mean difference 95% CI reported $\times 10^{-2}$

^gCortical gray volume and surface area reported as ratios to total tissue