

Corrigendum to: Dengue Endemicity, Force of Infection and Variation in Transmission Intensity From 13 Endemic Countries

Joshua Nealon,^{1,6} Alain Bouckenoghe,² Margarita Cortes,³ Laurent Coudeville,¹ Carina Frago,² Denis Macina,¹ and Clarence C. Tam^{4,5,6}

¹Vaccines Epidemiology and Modeling, Sanofi Pasteur, Lyon, France, ²Global Clinical Sciences, Sanofi Pasteur, Singapore, Singapore, ³Global Clinical Sciences, Sanofi Pasteur, Bogota, Colombia, ⁴Saw Swee Hock School of Public Health, National University of Singapore, Singapore, Singapore, ⁵National University Health System, Singapore, Singapore, and ⁶London School of Hygiene and Tropical Medicine, London, United Kingdom

In “Dengue Endemicity, Force of Infection and Variation in Transmission Intensity From 13 Endemic Countries” by Nealon et al [*J Infect Dis* 2020; jiaa132], the advance online publication contained three errors in Table 3, introduced through a Stata

coding error. The legend for Figure 2 also incorrectly described the confidence intervals in the figure. The correct table and figures are provided below, and are correct in the printed version. The authors regret the errors.

Table 3. Ages at Which 50% and 80% of Children Become Dengue Seropositive, Per Country, Using Constant or Age-Varying Models

Country	Median Age at Seroconversion, y (95% CI)		80th Percentile Age at Seroconversion, y (95% CI)	
	Constant Model	Age-Varying Model	Constant Model	Age-Varying Model
India	5.8 (5.5–6.1)	6.5 (6.0–6.9)	13.5 (12.8–14.3)	11.1 (8.8–17.4)
Indonesia	4.7 (4.5–4.9)	4.6 (4.4–4.8)	11.0 (10.5–11.5)	10.6 (10.1–11.2)
Malaysia	8.1 (7.1–9.2)	9.2 (5.9–>18)	18.8 (16.6–21.3)	>18
Philippines	2.9 (2.6–3.2)	1.6 (1.4–3.1)	6.7 (6.1–7.4)	8.7 (6.6–12.2)
Singapore	>18	>18	>18	>18
Thailand	4.7 (4.2–5.2)	4.2 (3.7–4.9)	10.9 (9.8–12.0)	12.7 (0.0–40.2)
Vietnam	6.1 (5.5–6.8)	5.1 (4.3–6.5)	14.1 (12.7–15.7)	>18
Brazil	6.5 (5.8–7.3)	7.5 (6.4–9.1)	15.1 (13.4–17.0)	13.3 (11.9–17.4)
Colombia	3.8 (3.5–4.1)	3.7 (3.4–4.1)	8.8 (8.1–9.5)	8.6 (7.9–9.4)
Honduras	4.0 (3.5–4.5)	3.9 (3.3–4.7)	9.2 (8.2–10.3)	9.0 (7.7–10.9)
Mexico	9.8 (8.8–10.9)	9.0 (8.0–10.4)	>18	>18
Peru	7.5 (6.5–8.7)	10.6 (6.5–28.8)	17.4 (15.1–20.2)	>18
Puerto Rico	8.2 (7.0–9.6)	7.9 (6.6–9.8)	>18	>18

Best-fitting models are highlighted in bold.

DOI: 10.1093/infdis/jiaa172

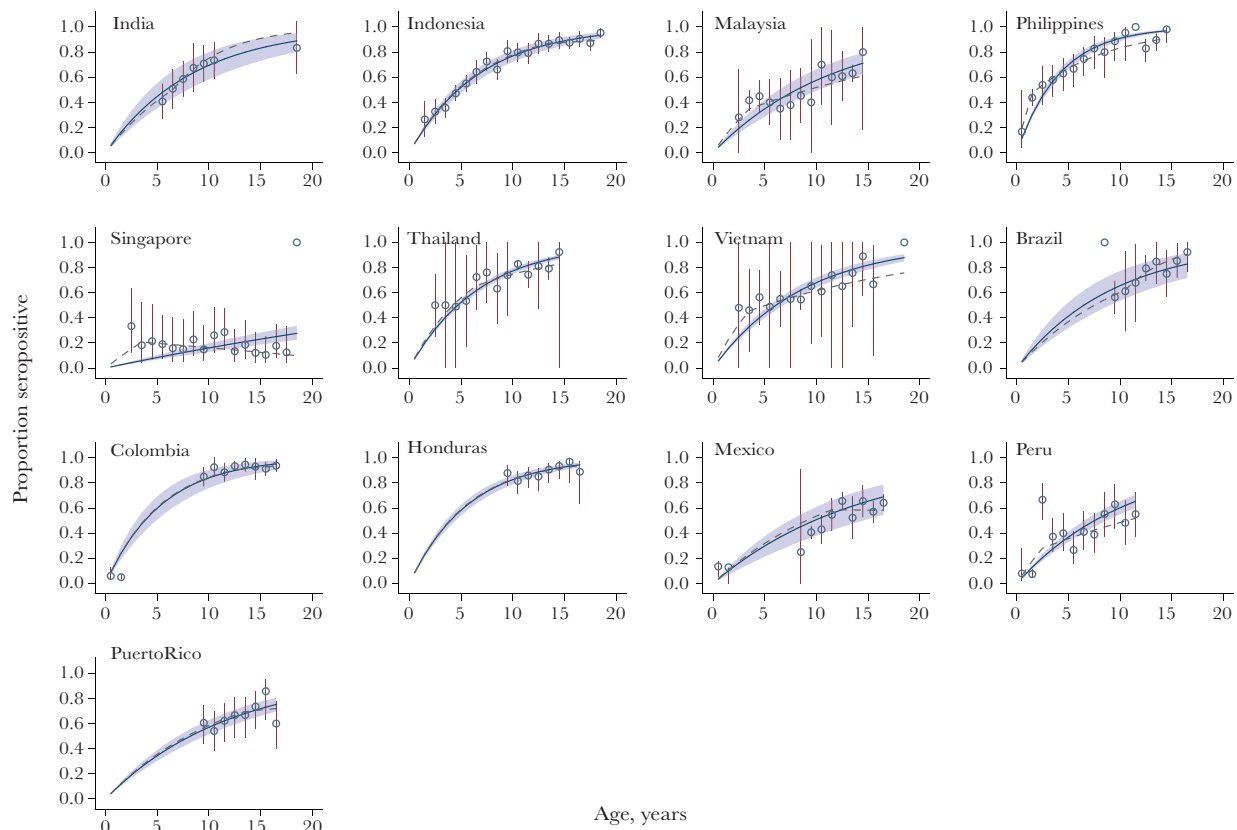


Figure 2. Observed seroprevalence by age (circles) and 95% confidence interval (CI), adjusted for clustering (spikes) and estimate seroprevalence assuming constant force of infection (FOI) (solid line) and 95% CIs (shaded area). Dotted lines correspond to estimated seroprevalence under an assumption of age-varying FOI.