

CORRECTION

Correction: *De novo* Sequencing, Assembly and Characterization of Antennal Transcriptome of *Anomala corpulenta* Motschulsky (Coleoptera: Rutelidae)

Haoliang Chen, Lulu Lin, Minghui Xie, Guangling Zhang, Weihua Su

[Fig 6](#) and its legend are incorrect. Please view the correct [Fig 6](#) and its legend here.



OPEN ACCESS

Citation: Chen H, Lin L, Xie M, Zhang G, Su W (2015) Correction: *De novo* Sequencing, Assembly and Characterization of Antennal Transcriptome of *Anomala corpulenta* Motschulsky (Coleoptera: Rutelidae). PLoS ONE 10(4): e0127303. doi:10.1371/journal.pone.0127303

Published: April 30, 2015

Copyright: © 2015 Chen et al. This is an open access article distributed under the terms of the [Creative Commons Attribution License](#), which permits unrestricted use, distribution, and reproduction in any medium, provided the original author and source are credited.

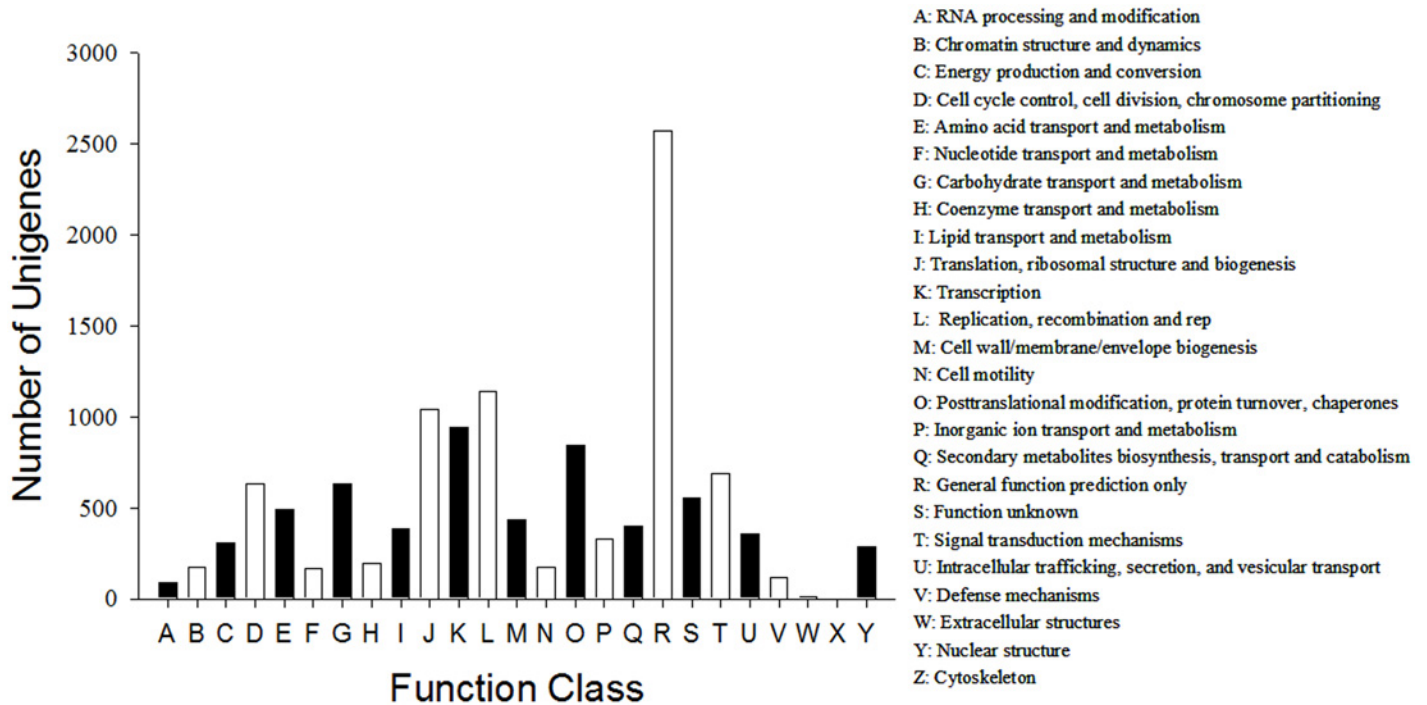


Fig 6. COG function classification. All unigenes were aligned to clusters of orthologous groups (COG) database at NCBI to predict possible functions. Out of 21,463 nr hits, 6,625 sequences had a COG classification among the 25 categories. The capital letters in x-axis indicate the COG categories as listed on the right and the y-axis indicates the number of unigenes in each category.

doi:10.1371/journal.pone.0127303.g001

Reference

1. Chen H, Lin L, Xie M, Zhang G, Su W (2014) *De novo* Sequencing, Assembly and Characterization of Antennal Transcriptome of *Anomala corpulenta* Motschulsky (Coleoptera: Rutelidae). PLoS ONE 9(12): e114238. doi: [10.1371/journal.pone.0114238](https://doi.org/10.1371/journal.pone.0114238) PMID: [25461610](https://pubmed.ncbi.nlm.nih.gov/25461610/)