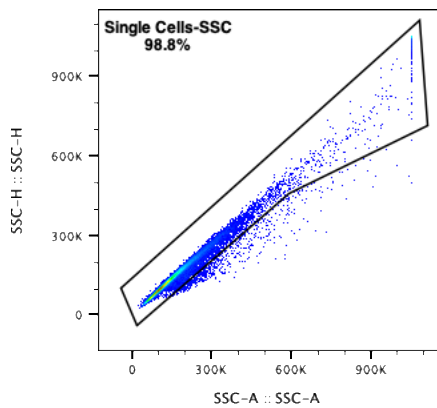
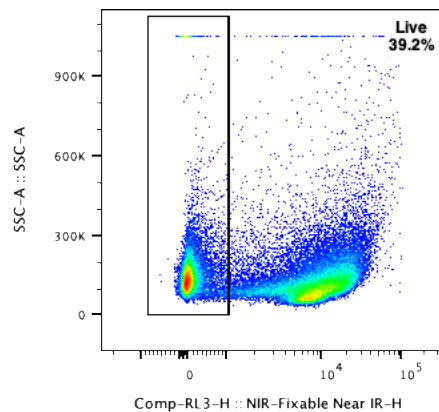


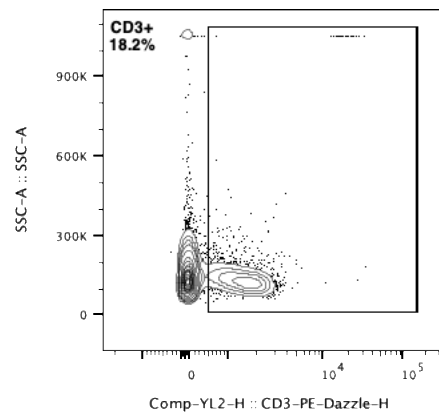
Single cells



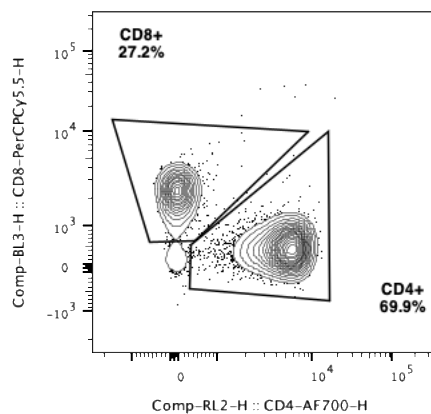
Single cells



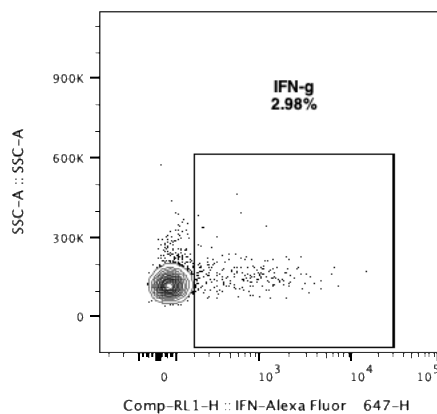
Live cells



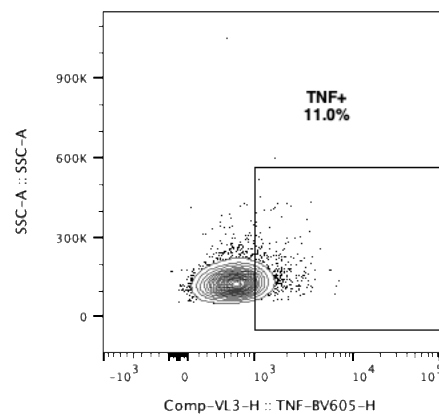
CD3⁺



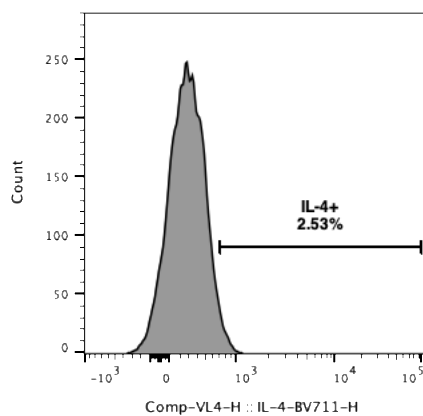
CD3⁺CD4⁺



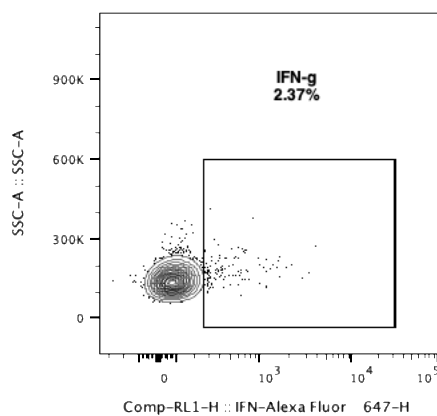
CD3⁺CD4⁺



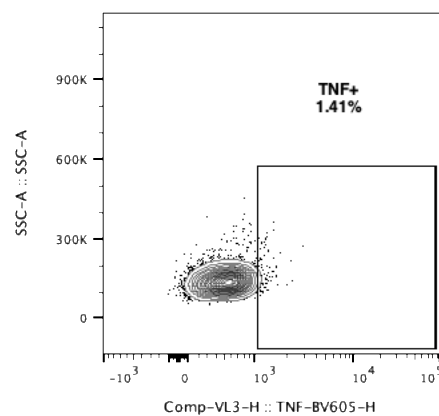
CD3⁺CD4⁺



CD3⁺CD8⁺



CD3⁺CD8⁺



CD3⁺CD8⁺

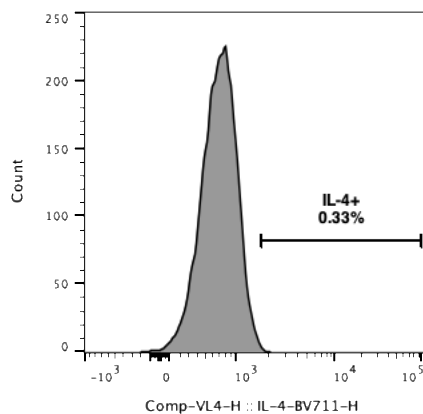


Figure S01: Gates strategy for T cells. Representative fluorescence-activated cell sorting (FACS) plots of T cells population.

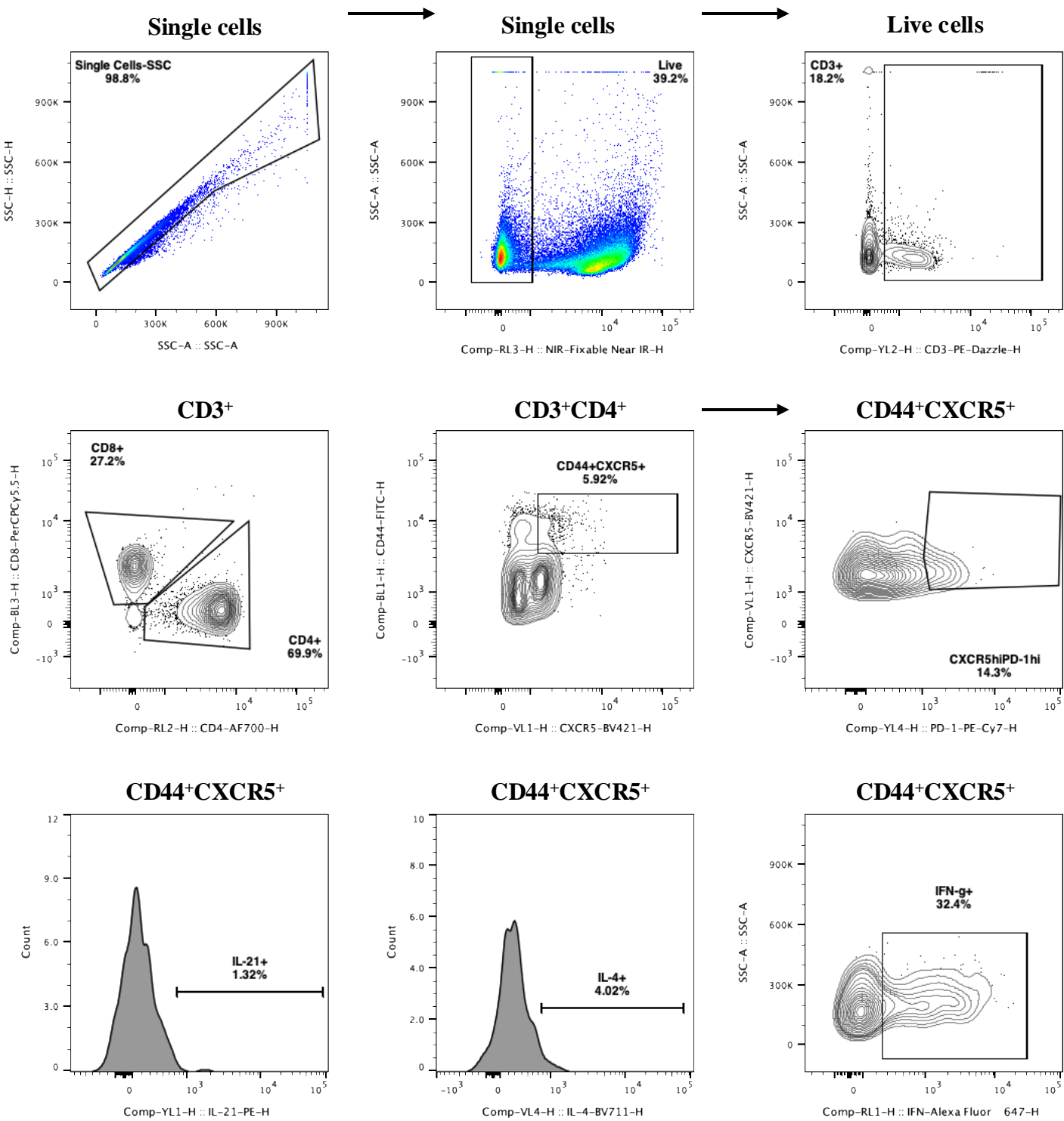


Figure S02: Gates strategy for Tfh cells. Representative fluorescence-activated cell sorting (FACS) plots of Tfh cells population.

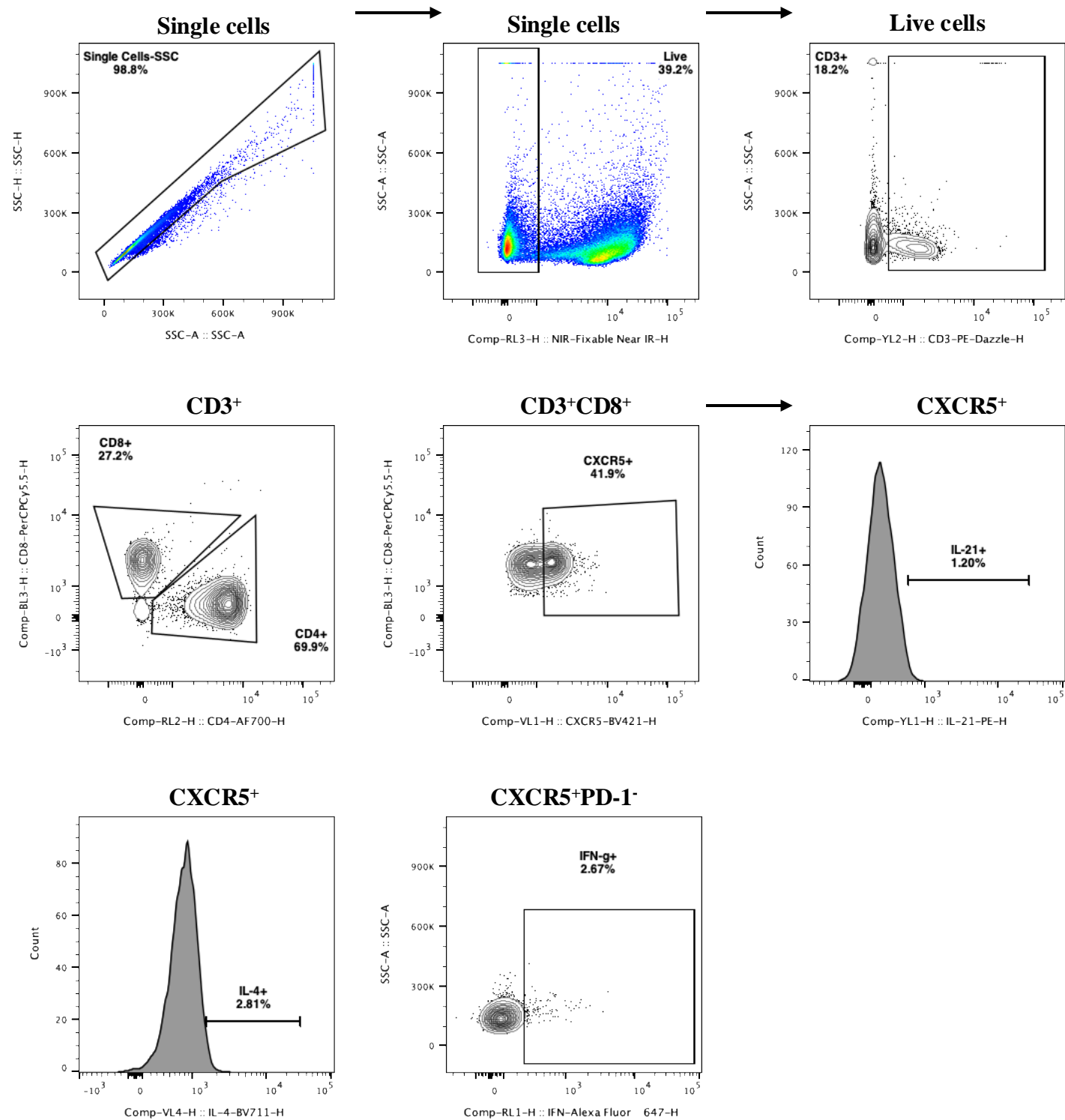


Figure S03: Gates strategy for CXCR5⁺CD8⁺ cells. Representative fluorescence-activated cell sorting (FACS) plots of CXCR5⁺CD8⁺ cells population.

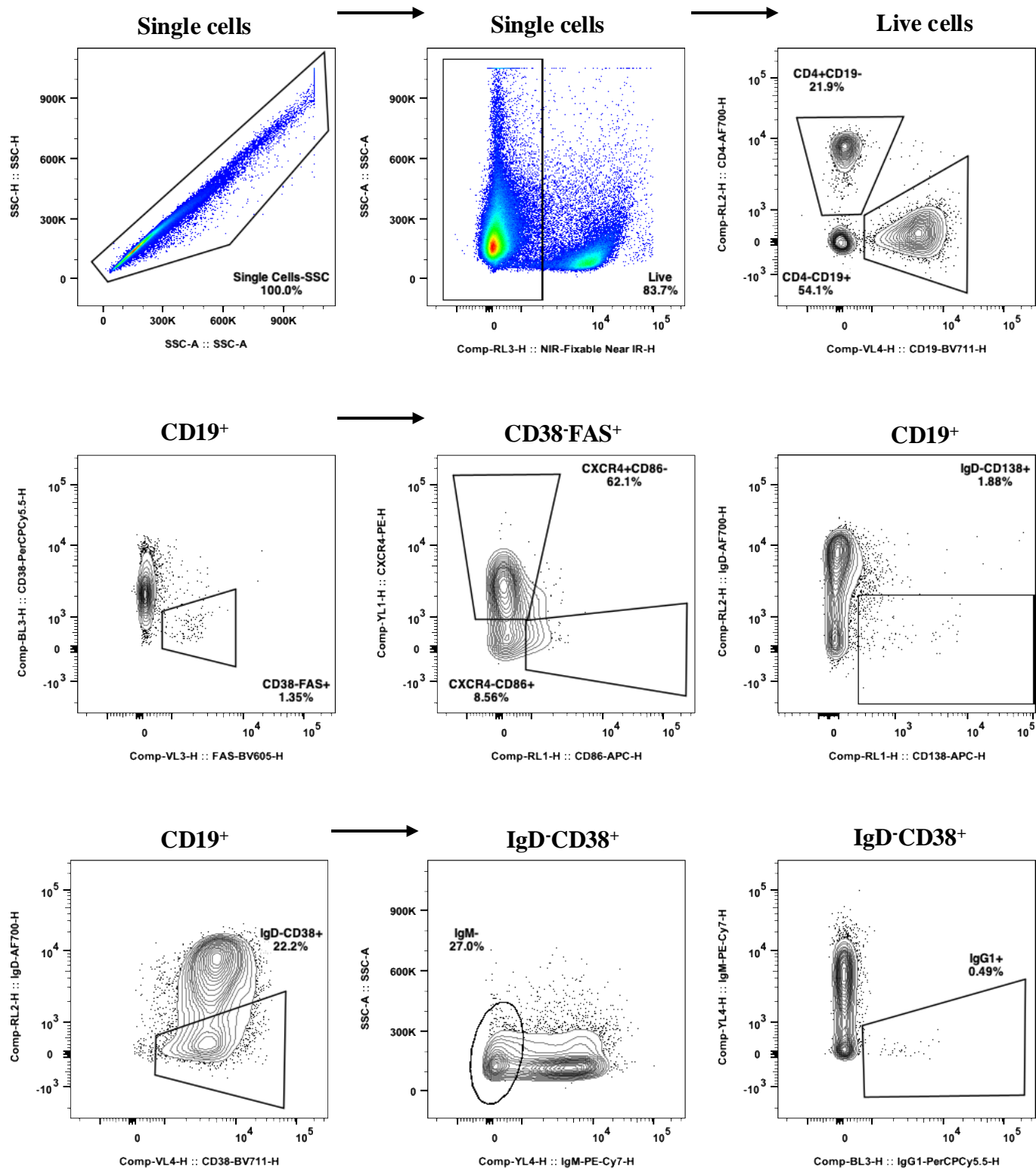


Figure S04: Gates strategy for B cells in spleen. Representative fluorescence-activated cell sorting (FACS) plots of B cells population.

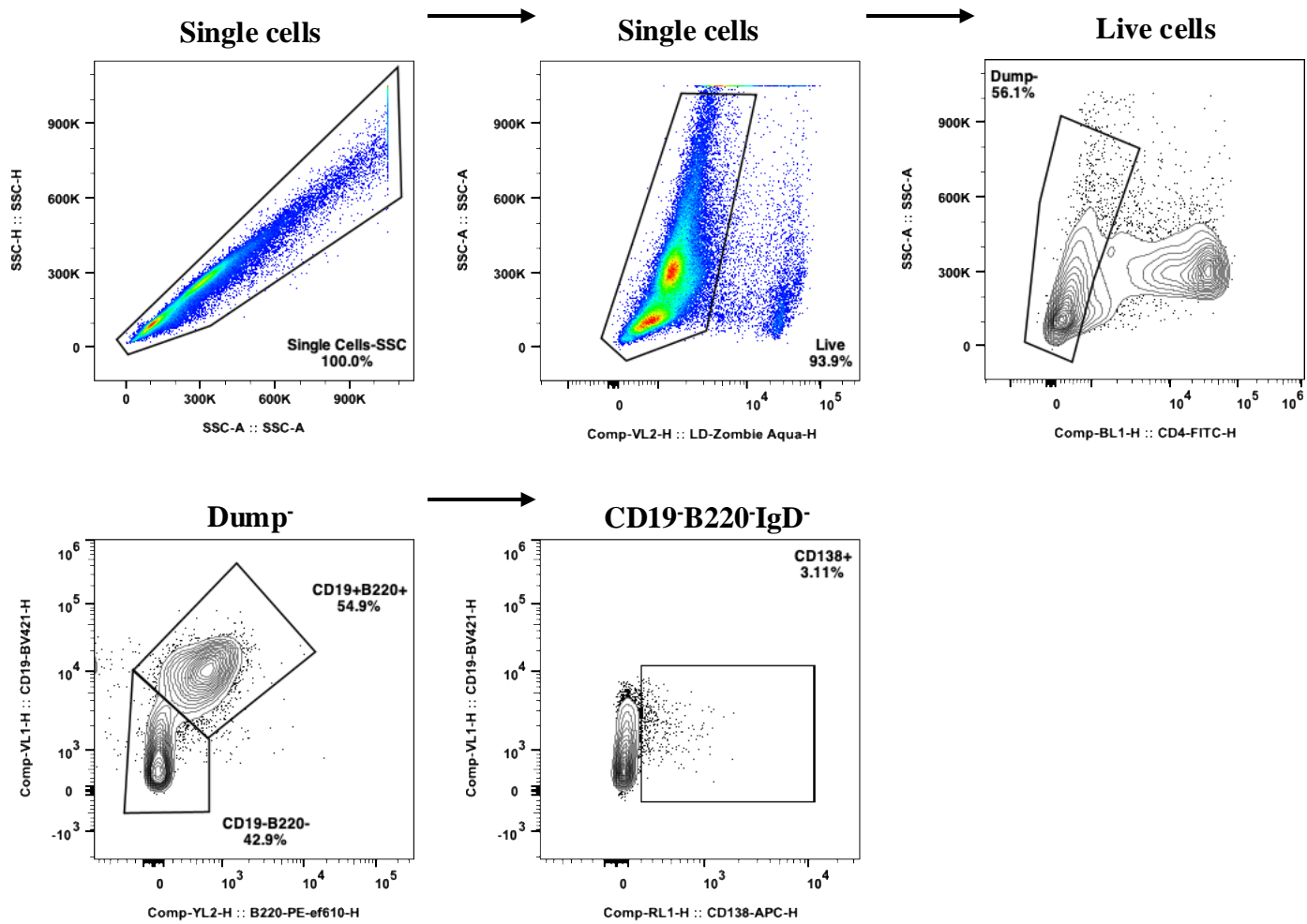


Figure S05: Gates strategy for B cells in bone marrow. Representative fluorescence-activated cell sorting (FACS) plots of B cells population in spleen.

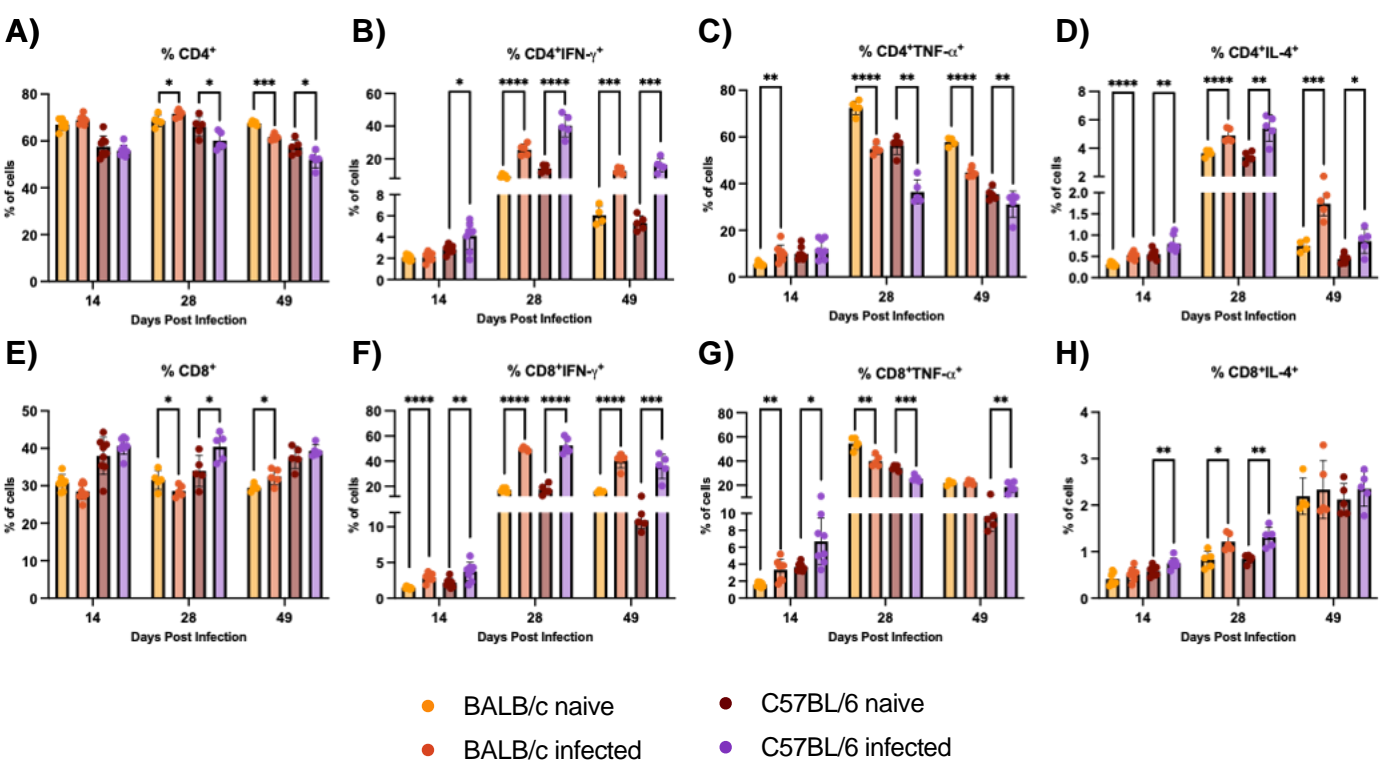


Figure S06: T cells response. Flow cytometry analysis of **A)** CD3⁺CD4⁺ **B)** CD3⁺CD4⁺IFN- γ ⁺ **C)** CD3⁺CD4⁺TNF- α ⁺ **D)** CD3⁺CD4⁺IL-4⁺ **E)** CD3⁺CD8⁺ **F)** CD3⁺CD8⁺IFN- γ ⁺ **G)** CD3⁺CD8⁺TNF- α ⁺ and **H)** CD3⁺CD8⁺IL-4⁺ T-cells. Each point represents an individual mouse: 14 DPI n = 8, 28 DPI n=5, and 49 DPI n=5. Significance was calculated by the Normality test followed by the parametric Unpaired t-test or nonparametric Mann-Whitney test. P-values of ≤ 0.05 , ≤ 0.01 , ≤ 0.001 , and ≤ 0.0001 are represented as one, two, three, and four symbol characters, respectively.