

SCIENTIFIC REPORTS



OPEN

The variability and seasonality of the environmental reservoir of *Mycobacterium bovis* shed by wild European badgers

Received: 17 November 2014

Accepted: 02 April 2015

Published: 06 August 2015

Hayley C. King¹, Andrew Murphy¹, Phillip James¹, Emma Travis¹, David Porter¹, Yu-Jiun Hung¹, Jason Sawyer², Jennifer Cork², Richard J. Delahay³, William Gaze⁴, Orin Courtenay^{1,5} & Elizabeth M. Wellington¹

The incidence of *Mycobacterium bovis*, the causative agent of bovine tuberculosis, has been increasing in UK cattle herds resulting in substantial economic losses. The European badger (*Meles meles*) is implicated as a wildlife reservoir of infection. One likely route of transmission to cattle is through exposure to infected badger urine and faeces. The relative importance of the environment in transmission remains unknown, in part due to the lack of information on the distribution and magnitude of environmental reservoirs. Here we identify potential infection hotspots in the badger population and quantify the heterogeneity in bacterial load; with infected badgers shedding between $1 \times 10^3 - 4 \times 10^5$ *M. bovis* cells g^{-1} of faeces, creating a substantial and seasonally variable environmental reservoir. Our findings highlight the potential importance of monitoring environmental reservoirs of *M. bovis* which may constitute a component of disease spread that is currently overlooked and yet may be responsible for a proportion of transmission amongst badgers and onwards to cattle.

The incidence of *Mycobacterium bovis* in cattle herds in Great Britain (GB) has increased from 0.01% in 1979¹ to 4.8% in 2012². Control and compensation has cost the taxpayer £500 million over the past decade and this is predicted to increase to £1 billion over the next 10 years if further geographical spread is observed³; making bovine tuberculosis one of the most economically important animal health problems in the UK farming industry⁴.

The European badger is a wildlife reservoir involved in the transmission of *M. bovis* to cattle in the UK and RoI^{5,6}. Once infected, badgers may intermittently shed *M. bovis* cells in sputum, faeces and urine⁷. One likely route of transmission to cattle is through exposure to infected badger urine and faeces. Although the location and extent of environmental *M. bovis* has not been previously quantified, indirect contact with infected faeces and urine may be an important exposure pathway⁸. *M. bovis* genomic DNA can survive outside the host for up to 21 months⁹ and cells have been shown to be viable by culture from mice fed soil in which *M. bovis* had been persisting for months¹⁰. The survival of shed *M. bovis* cells is likely to vary in space and time in relation to local environmental conditions and the distribution of infectious badgers. Understanding patterns in environmental contamination (defined as the presence of

¹University of Warwick, School of Life Sciences, Gibbet Hill Campus, Coventry, CV4 7AL. ²Animal and Plant Health Agency, Weybridge, Woodham lane, New Haw, Addlestone, Surrey, KT15 3NB. ³National Wildlife Management Centre, Animal and Plant Health Agency, Woodchester Park, Nympsfield, Gloucestershire, GL10 3UJ, UK.

⁴European Centre for Environmental and Human Health, University of Exeter Medical School, Knowledge Spa, Royal Cornwall Hospital, Truro, Cornwall, TR1 3HD. ⁵Warwick Infectious Disease Epidemiology Research (WIDER), University of Warwick, Coventry, CV4 7AL. Correspondence and requests for materials should be addressed to H.C.K. (email: Hayley.King@Warwick.ac.uk)

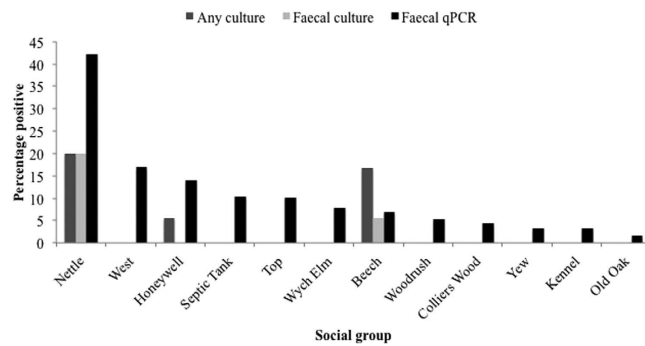


Figure 1. Percentage positive badgers per social group determined by any culture positive (tracheal or faecal) or faecal culture compared with positives by faecal qPCR. Data aggregated across the entire year.

Social group	Percentage positive faeces by qPCR	Cumulative genome equivalents in faeces	Percentage positive IFN γ	Percentage positive Stat Pak	Percentage positive IFN γ or Stat Pak
Nettle	42.2	1.08×10^6	60	100	100
West	16.9	1.48×10^6	33.3	20	40
Honeywell	13.9	4.08×10^5	50	50	66.7
Septic Tank	10.3	4.57×10^5	40	20	60
Top	10.1	9.00×10^5	20	90	90
Wych Elm	7.8	4.19×10^4	0	0	0
Beech	6.9	4.98×10^5	41.2	29.4	44.4
Woodrush	5.3	1.45×10^5	0	33.3	33.3
Colliers Wood	4.3	8.83×10^4	0	0	0
Yew	3.3	2.25×10^4	0	40	40
Kennel	3.2	2.76×10^4	0	20	20
Old Oak	1.6	2.56×10^5	0	31.3	31.3

Table 1. Summary of *M. bovis* genome equivalents counts by social group from faecal field sampling and immunoassay testing results on trapped badgers.

M. bovis genome equivalents in the environment) could aid in the design of more effective interventions, currently based on culling and vaccination strategies.

The availability of a method to quantify relative levels of environmental contamination with *M. bovis* could open up possibilities for monitoring spatial and temporal variation in risk and may help direct the implementation of disease control interventions. Currently the only means of measuring levels of infection in badger populations is through trapping and testing with BrockTB Stat Pak[®] (Stat Pak)¹¹, Interferon gamma (IFN γ)¹² and culture of clinical samples¹³. Cultivation, particularly from faecal material, has low sensitivity and is qualitative (Fig. 1). A qPCR method for non-invasive environmental monitoring of shedding was developed in our group^{14,15}. This qPCR assay quantifies faecal shedding, a measure that correlates strongly with the level of infection within a social group as measured by immunoassay (Spearman's $\rho = 0.92$, $p < 0.001$)¹⁶. The only other non-invasive method for monitoring infection in badger populations is culture of faecal material, which is particularly insensitive (Fig. 1). Using this optimised qPCR assay we are able to report on the spatio-temporal reservoir of *M. bovis* from badger faecal shedding in a natural population over the course of a year. Badgers defecate in latrines within or at the edges of their territories¹⁷ and hence they can be used to identify a defined population of animals.

Methods

Sampling and Trapping. Fresh faecal samples were obtained from latrines associated with 12 badger social groups (Table 1) in Woodchester Park Gloucestershire through 2012 and 2013. Two intensive sampling periods of two weeks each were undertaken during the period of peak badger latrine activity in the spring and autumn of 2012 where up to 10 unique faecal samples were obtained from latrines associated with each social group on alternate days. Faecal samples were taken from latrines in closest proximity to

the main sett of each social group. A second sampling regime was undertaken over a year long period where up to 10 unique fresh, faecal samples were taken from latrines associated with each social group per day over two non-consecutive days in each season, starting two days after trapping operations took place in that location. For the purpose of this study March–May was classified as spring, June–August as summer, September–November as autumn and December–February as winter.

Each of the 12 badger social groups in the study was trapped four times throughout the year, once per season, with variable numbers of animals trapped between groups and seasons (Table S1). Badgers were trapped using baited cage traps placed around the main setts of each social group and identified using a unique tattoo applied at the first capture of that animal. Trapped badgers from each of the 12 social groups were tested by BrockTB Stat-Pak®, IFN γ and culture of clinical samples. All experimental protocols were approved by the University of Warwick and the Food and Environment Research Agency Ethical Review Committee and carried out in accordance with the approved guidelines and under the license granted by the Home Office under the 1986 Animal (Scientific Procedures) Act.

DNA Extraction and qPCR. Total community DNA was extracted from 0.1 g (\pm 0.003 g) of faeces using the Fast DNA spin kit for soil (MP Biomedicals) following the manufacturer's instructions. *M. bovis* was detected and quantified using a qPCR assay which targets the RD4 deletion region unique to the *M. bovis* genome (Specificity data Table S2). An initial qPCR screen of each sample was performed using an ABI 7500 Fast qPCR machine (ABI) with two technical replicates of each sample. Positive controls (8.5×10^5 genome equivalents) and negative controls were also present in duplicate on each plate. PCR reactions were set up using 900 nM of each primer (RD4F 5^{\prime} TGTGAATTCATACAAGCCGTAGTCG 3^{\prime} , RD4R 5^{\prime} CCCGTAGCGTTACTGAGAAATTGC 3^{\prime}), 250 nM of Taqman probe (6FAM-AGCGCAACACTCTTGGAGTGGCCTAC—TMR), 1 mg ml $^{-1}$ bovine serum albumen (BSA), 12.5 μ l of Environmental Mastermix 2.0 (ABI), 10 μ l of template and made up to 25 μ l with molecular grade water (Sigma Aldrich). PCR cycling conditions were 50 °C for 2 min followed by 95 °C for 10 min then 40 cycles of 95 °C for 15 sec and 58 °C for 1 min. Samples exhibiting amplification in one or more technical replicates were taken on to full quantification using three technical replicates per sample under the same conditions. If one or more of the technical replicates of the quantification assay exhibited amplification the sample was deemed positive for *M. bovis*. Serial dilutions of *M. bovis* BCG Danish 1331 genomic DNA were used as standards for this quantification. An inhibition control assay previously described¹⁴ was used to detect the possibility of false negative results due to inhibition. Where significant inhibition was detected DNA was re-extracted from frozen aliquots and qPCR assays were repeated. The number of *M. bovis* genome equivalents was quantified independently by qPCR at The University of Warwick and APHA Weybridge (Supplementary Figure 1).

Data Analysis. All data analysis was performed using the statistical program R. Logistic regression with social group (Old Oak) as the baseline was used to determine whether the number of positive samples varied amongst social groups throughout the year. Binomial generalised linear models (GLM) were performed to determine differences in *M. bovis* cells numbers shed between groups and between seasons. For spring two sampling days per social group were chosen to represent cross sectional sampling. Variability within groups was determined by calculating the median, upper and lower quartiles and range for each soil group.

The probability of detecting a false positive rate was 2%, calculated using known negative faecal samples obtained from captive badgers at APHA which were routinely tested for bTB using IFN γ . Negative samples were double blinded and randomly introduced into the experiment at both centres. The probability of detecting x false positive for a given number of samples was calculated using equation 1 where $p(x)$ = the probability of exactly x false positives, f = the false positive rate, n = the number of samples and x = the number of false positives.

$$p(x) = \frac{n!}{(n-x)!x!} \times (1-f)^{n-x} \times f^x \quad (1)$$

The number of confirmatory re-extractions (e) needed to result in the probability (p) of exactly x false positives was calculated using equation 2.

$$p(x) = \left(\frac{n!}{(n-x)!x!} \times (1-f)^{n-x} \times f^x \right) \times (1-f)^e \quad (2)$$

Results

Infection levels within social groups. During the study, 53.6% of trapped badgers were *M. bovis* positive by Stat-Pak, IFN γ or culture. By qPCR faecal samples from every social group examined were found to be positive (Fig. 2). Although the percentage of infected faecal samples varied considerably (Table 1, Table S3), the numbers of *M. bovis* genome equivalents per faecal sample also varied widely ranged from 1×10^3 to 4×10^5 per gram of faeces (Table 1).

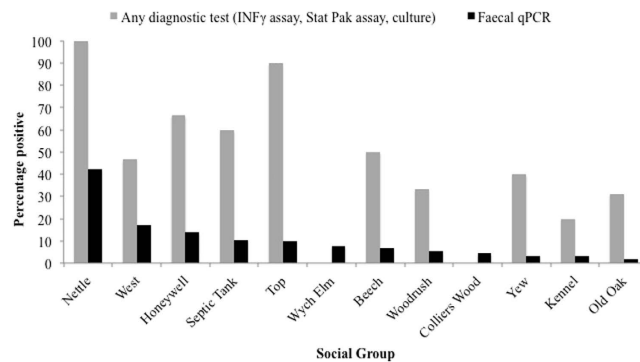


Figure 2. The percentage of badgers positive by any diagnostic tests compared to the percentage of positive faecal samples by qPCR per social group.

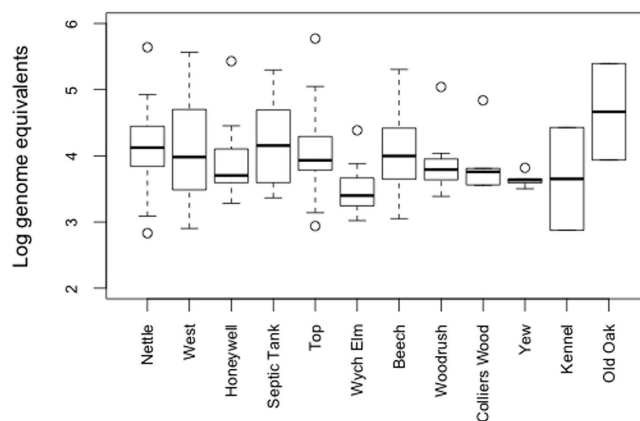


Figure 3. Distribution of *M. bovis* genome equivalents in positive samples by social group.

Significant variability in genome equivalents was identified both within and between social groups (Fig. 3) with social groups Nettle, Top, Septic Tank and West shedding more cells over the year than the other social groups (Table 1). Social groups with a high percentage of positive samples consistently shed amongst the highest cumulative numbers of *M. bovis* cells during the year (Table 1). Social group Old Oak was exceptional as it has one of the highest cumulative *M. bovis* genome equivalent values yet had the lowest percentage of positive samples in the study (Table 1). This distribution is consistent with the presence of a relatively small number of animals shedding large amounts of bacteria in some groups. However, as we could not assign faecal samples to individuals we cannot discount within-individual variation in shedding from being responsible for this observation. Hence the need for further research into heterogeneity in transmission risks amongst individual badgers.

Seasonal variability in *M. bovis* shedding. Overall a significantly greater number of *M. bovis* genome equivalents were shed in summer than in any other season. There were substantial seasonal differences in the cumulative number of *M. bovis* equivalents detected per social group (Fig. 4) with different groups identified as the largest contributors to the environmental pool of *M. bovis* throughout the year. Although summer had the highest number of genome equivalents overall, Septic Tank shed fewer cells in summer compared to other seasons and Top and shed more cells in spring. Nettle also shed fewer *M. bovis* genome equivalents in spring compared with the rest of the year. However, five social groups (Nettle, West, Honeywell, Septic Tank, and Top) were identified as having consistently high proportions of positive faeces and relatively large quantities of *M. bovis* bacilli shed (Table 1). This corresponds to immunoassay tests carried out on trapped badgers, which also identified these five groups as the most heavily infected (Table 1). Although there is strong correspondence between immunoassay and qPCR results there are some discrepancies, in particular Nettle and Top are 100% and 90% positive by immunoassay yet there was a large difference in the percentage of positive faecal samples with 42.2% and 10.0% respectively.

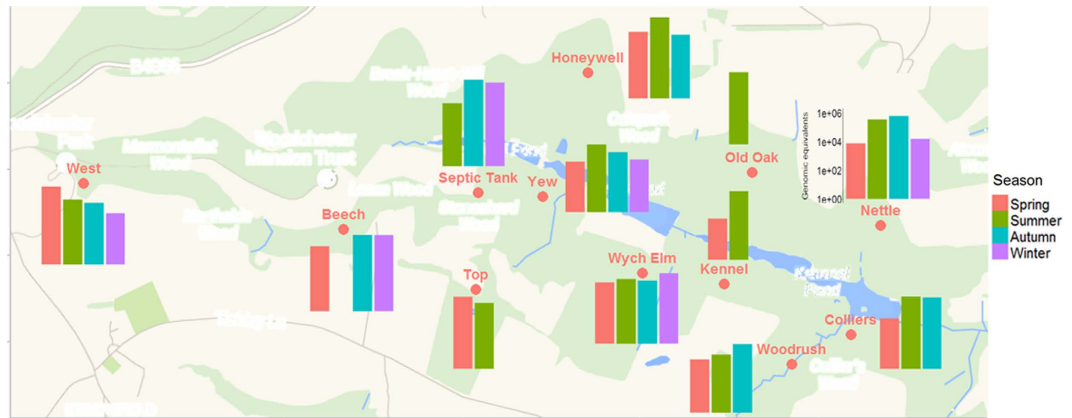


Figure 4. The cumulative *M. bovis* genome equivalents shed by each social group per season. Created in R version 3.0.2 using the packages ggplots²³¹ and gmaps³². The scales for all graphs are identical.

Discussion

Detection of *M. bovis* by qPCR allows the presence of faecal shedding and hence infectious badgers to be established non invasively and raises the possibility of identifying infectious social groups. Unlike standard diagnostic tests the qPCR approach also quantifies levels of *M. bovis* shedding, providing opportunities to assess spatio-temporal variations in the environmental distribution of this potential source of infection for cattle, badgers and other wild mammals. Environmental transmission is likely to be a complex mixture of a number of factors including the infectious load of *M. bovis* in faeces and urine and changes in these reservoirs over time, proximity to cattle pasture, the frequency and type of contact cattle have with badger excrement and the age of faecal samples. The application of qPCR to further understand the epidemiology and transmission dynamics of bovine tuberculosis may be an important component in managing the advancing frontier between endemic and non-endemic cattle infection, and to inform transmission models (e.g. Brooks-Pollock *et al.* (2014)).

The heterogeneities observed in this study between social groups and the consistency with which five groups were identified as highly infected and shedding, suggesting that interventions targeted at particular high risk populations could have a larger impact than random and blanket control strategies¹⁸. However, we are mindful that any perturbation of badger populations could result in increased rather than decreased transmission^{19,20}. The observed discrepancies in the percentage of positive faecal samples for social groups with similar prevalences of infection by immunoassay highlights the need for further work to establish the causes of these differences. Whilst heterogeneity in transmission is a well-known phenomenon, this study is one of the few empirical studies which have attempted to demonstrate the extent of this variability²¹. Although this study does not assess the viability of *M. bovis* in faeces, previous work has identified the presence of *M. bovis* 16S rRNA in soil⁹ and badger setts and latrines²². In addition, studies have had a culture success rate of 2.5% from badger faecal samples²³ and *M. bovis* has been cultured from cattle faeces several months after excretion²⁴. This indicates that at least a proportion of *M. bovis* cells shed in badger faeces can remain viable in the environment; however, further research is required to determine potential survival and transmissibility of *M. bovis* in environmental samples.

Whilst the focus in the UK and RoI is on badgers, other wildlife hosts are present^{25,26}; however, little is currently known of their contribution to environmental reservoirs and their relative importance for transmission to cattle²⁵. Issues controlling *M. bovis* are not confined to the UK and RoI. Worldwide there are problems with *M. bovis* in buffalo and lions in South Africa²⁷, possums in New Zealand²⁸, white tailed deer in America²⁹ and wild boar in Spain³⁰. This non-invasive qPCR assay can be employed to detect shedding in other systems and samples types including milk, water and clinical tissues, is possible using this method. Whilst controlling and monitoring *M. bovis* in wildlife populations remains a challenge, non-invasive monitoring of environmental contamination may open up opportunities to identify spatio-temporal heterogeneity in disease risks and hence contribute to the development of suitable approaches for disease control in livestock.

References

- Garnett, B. T., Roper, T. J. & Delahay, R. J. Use of cattle troughs by badgers (*Meles meles*) A potential route for the transmission of bovine tuberculosis (*Mycobacterium bovis*) to cattle. *Appl. Anim. Behav. Sci.* **80**, 1–8 (2003).
- Department for Environment Food and Rural Affairs, *Monthly publication of National Statistics on the Incidence of Tuberculosis (TB) in Cattle to end of April 2014 for Great Britain*, (2014) Available at: https://www.gov.uk/government/uploads/system/uploads/attachment_data/file/343248/bovinetb-statsnotice-16jul14.pdf (Accessed: 3rd August 2014).
- Department for Environment Food and Rural Affairs, *Bovine Tuberculosis Evidence Plan*, (2013) Available at: https://www.gov.uk/government/uploads/system/uploads/attachment_data/file/221077/pb13909-evidenceplan-bovine-tuberculosis.pdf (Accessed: 23rd of April 2014).
- Reynolds, D. A review of tuberculosis science and policy in Great Britain. *Vet. Microbiol.* **112**, 119–26 (2006).

5. Donnelly, C. A. *et al.* Impact of localized badger culling on tuberculosis incidence in British cattle. *Nature*. **426**, 834–837 (2003).
6. Aznar, I. *et al.* Trial design to estimate the effect of vaccination on tuberculosis incidence in badgers. *Vet. Microbiol.* **151**, 104–11 (2011).
7. Clifton-Hadley, R. S., Wilesmith, J. W. & Stuart, F. A. *Mycobacterium bovis* in the European badger (*Meles meles*): epidemiological Findings in tuberculosis badgers from a naturally infected population. *Epidemiol. Infect.* **111**, 9–19 (1993).
8. Tolhurst, B. A., Delahay, R. J., Walker, N. J., Ward, A. I. & Roper, T. J. Behaviour of badgers (*Meles meles*) in farm buildings : Opportunities for the transmission of *Mycobacterium bovis* to cattle? *Appl. Anim. Behav. Sci.* **117**, 103–113 (2009).
9. Young, J. S., Gormley, E. & Wellington, E. M. H. Molecular detection of *Mycobacterium bovis* and *Mycobacterium bovis* BCG (Pasteur) in soil. *Appl. Environ. Microbiol.* **71**, 1946–52 (2005).
10. Ghodbane, R., Mba Medie, F., Lepidi, H., Nappez, C. & Drancourt, M. Long-term survival of tuberculosis complex mycobacteria in soil. *Microbiology* **160**, 496–501 (2014).
11. Chambers, M. A. *et al.* Validation of the BrockTB stat-pak assay for detection of tuberculosis in Eurasian badgers (*Meles meles*) and influence of disease severity on diagnostic accuracy. *J. Clin. Microbiol.* **46**, 1498–500 (2008).
12. Dalley, D. J. *et al.* Development and evaluation of a gamma-interferon assay for tuberculosis in badgers (*Meles meles*). *Tuberculosis* **88**, 235–243 (2008).
13. Delahay, R. J., Langton, S., Smith, G. C., Clifton-Hadley, R. S. & Cheeseman, C. L. The spatio-temporal distribution of *Mycobacterium bovis* (bovine tuberculosis) infection in a high-density badger population. *J. Anim. Ecol.* **69**, 428–441 (2000).
14. Pontiroli, A. *et al.* Pathogen quantitation in complex matrices: a multi-operator comparison of DNA extraction methods with a novel assessment of PCR inhibition. *PLoS one* **6**, e17916 (2011).
15. Travis, E. R. *et al.* An inter-laboratory validation of a real time PCR assay to measure host excretion of bacterial pathogens, particularly of *Mycobacterium bovis*. *PLoS one* **6**, e27369 (2011).
16. Wellington, E. M., Courtenay, O. Badgers and bovine TB: how can environmental microbiology help? *Microbiol. Today* **41**, 143–144 (2014).
17. Roper, T. *et al.* Territorial Marking with Faeces in Badgers (*Meles meles*): a Comparison of Boundary and Hinterland Latrine Use. *Behaviour* **127**, 289 – 307 (1993).
18. Lloyd-Smith, J. O., Schreiber, S. J., Kopp, P. E. & Getz, W. M. Superspreading and the effect of individual variation on disease emergence. *Nature* **438**, 355–9 (2005).
19. Tuytens, F. A. M., Delahay, R. J., Macdonald, D. W., Cheeseman, C. L., Long, B. & Donnelly, C. A. Spatial perturbation caused by a badger (*Meles meles*) culling operation: implications for the function of territoriality and the control of bovine tuberculosis (*Mycobacterium bovis*). *J. Anim. Ecol.* **69**, 815–828 (2000).
20. Woodroffe, R. *et al.* Effects of culling in badger *Meles meles* spatial organization: Implications for the control of bovine tuberculosis. *J. Appl. Ecol.* **43**, 1–10 (2006).
21. Mathews, L. *et al.* Heterogeneous shedding of *Escherichia coli* O157 in cattle and its implications for control. *P. Natl. Acad. Sci. USA*. **103**, 547–52 (2006).
22. Courtenay, O. *et al.* Is *Mycobacterium bovis* in the environment important for the persistence of bovine tuberculosis? *Biol. Letters*. **2**, 460 – 462 (2006)
23. Wilesmith, J. W. *et al.* Tuberculosis in East Sussex II. Aspects of badger ecology and surveillance for tuberculosis in badger populations (1976–1984). *J. Hyg. Camb.* **97**, 11–26 (1986).
24. Courtenay, O., Wellington, E. M. H. *Mycobacterium bovis* in the environment: towards our understanding of its biology. *Cattle Pract.* **16**, 122–126 (2008).
25. Delahay, R. J., De Leeuw, a. N. S., Barlow, a. M., Clifton-Hadley, R. S. & Cheeseman, C. L. The Status of *Mycobacterium bovis* Infection in UK Wild Mammals: A Review. *Vet. J.* **164**, 90–105 (2002).
26. Mathews, F. *et al.* Bovine tuberculosis (*Mycobacterium bovis*) in British farmland wildlife : the importance to agriculture. *Proc Biol Sci.* **7**, 357 – 365 (2006).
27. Renwick, R. White, P. C. L. & Bengis, R. G. Bovine tuberculosis in southern African wildlife: a multi-species host-pathogen system. *Epidemiol. Infect.* **135**, 529–40 (2007).
28. Coleman, J. D. & Cooker, M. M. *Mycobacterium bovis* infection in wildlife in New Zealand. *Tuberculosis*. **81**, 191–202 (2001).
29. Miller, R. S. & Sweeney, S. J. *Mycobacterium bovis* (bovine tuberculosis) infection in North American wildlife: current status and opportunities for mitigation of risks of further infection in wildlife populations. *Epidemiol. Infect.* **141**, 1357–70 (2013).
30. Aranaz, A. *et al.* Bovine Tuberculosis (*Mycobacterium bovis*) in Wildlife in Spain. *J. Clin. Microbiol.* **42**, 2602–2608 (2004).
31. Wickham, H. *ggplot2: elegant graphics for data analysis*. (Springer, New York, 2009).
32. Kahle, D. & Wickham, H. ggmap: Spatial Visualization with ggplot2. *R J.* **5**, 114–161 (2013).

Acknowledgments

We acknowledge funding from Defra, H.C.K. was in receipt of a BBSRC DTG studentship and E.M.W. and O.C. acknowledge support from BBSRC for collaboration with Eamonn Gormley, UCD. We are also grateful to the APHA field team at Woodchester Park for support during fieldwork, and to Defra who fund the long-term study. We acknowledge the work of Frank Sweeney and Victoria Hibbard in producing specificity data. We are grateful to Deidre Hollingsworth for critical reading of the manuscript.

Author Contributions

H.C.K. was involved with sample collection and processing, undertook statistical analysis, prepared tables and figures and wrote the manuscript with assistance from E.M.W. P.J. collected and processed samples and undertook statistical analysis. A.M. collected and processed samples and undertook statistical analysis. E.T. undertook statistical analysis and advised on the project. D.P. collected and processed samples. Y.H. produced figures for the manuscript. J.S. coordinated and oversaw processing of samples at A.P.H.A. Weybridge. J.C. processed samples at APHA Weybridge. R.J.D. contributed to the study design, reporting and data evaluation, organised and oversaw the fieldwork at APHA Woodchester. W.G. was involved with designing the original experiment. O.C. in collaboration with E.M.W. was involved in the project design. E.M.W. in collaboration with O.C. devised the experimental set up and supervised all field and practical work and was responsible for biosafety.

Additional Information

Supplementary information accompanies this paper at <http://www.nature.com/srep>

Competing financial interests: The authors declare no competing financial interests.

How to cite this article: King, H. C. *et al.* The variability and seasonality of the environmental reservoir of *Mycobacterium bovis* shed by wild European badgers. *Sci. Rep.* **5**, 12318; doi: 10.1038/srep12318 (2015).



This work is licensed under a Creative Commons Attribution 4.0 International License. The images or other third party material in this article are included in the article's Creative Commons license, unless indicated otherwise in the credit line; if the material is not included under the Creative Commons license, users will need to obtain permission from the license holder to reproduce the material. To view a copy of this license, visit <http://creativecommons.org/licenses/by/4.0/>