

Association between Striatal Subregions and Extrastriatal Regions in Dopamine D₁ Receptor Expression: A Positron Emission Tomography Study

Hironobu Fujiwara¹, Hiroshi Ito^{2*}, Fumitoshi Kodaka¹, Yasuyuki Kimura¹, Harumasa Takano¹, Tetsuya Suhara¹

1 Clinical Neuroimaging Team, Molecular Neuroimaging Program, Molecular Imaging Center, National Institute of Radiological Sciences, Chiba, Japan, **2** Biophysics Program, Molecular Imaging Center, National Institute of Radiological Sciences, Chiba, Japan

Abstract

The mesencephalic dopamine (DA) system is the main DA system related to affective and cognitive functions. The system consists of two different cell groups, A9 and A10, which originate from different regions of the midbrain. The striatum is the main input from the midbrain, and is functionally organized into associative, sensorimotor and limbic subdivisions. At present, there have been few studies investigating the associations of DA functions between striatal subdivisions and extrastriatal regions. The aim of this study was to investigate the relationship of DA D₁ receptor (D₁R) expression between striatal subdivisions and extrastriatal regions in humans using positron emission tomography (PET) with voxel-by-voxel whole brain analysis. The PET study was performed on 30 healthy subjects using [¹¹C]SCH23390 to measure D₁R expression. Parametric images of binding potentials (BP_{ND}) were created using the simplified reference tissue model. Regions of interest were defined for striatal subdivisions. Multiple regression analysis was undertaken to determine extrastriatal regions that were associated with each striatal subdivision in BP_{ND} using statistical parametric mapping 5. The BP_{ND} values of associative, sensorimotor and limbic subdivisions were similarly correlated with those of multiple brain regions. Regarding the interrelationships among striatal subdivisions, mutual correlations were found among associative, sensorimotor and limbic subdivisions in BP_{ND} as well. The relationships in BP_{ND} between striatal subdivisions and extra-striatal regions suggest that differential striatal subdivisions and extrastriatal regions have a similar biological basis of D₁R expression. Different DA projections from the midbrain did not explain the associations between striatal subdivisions and extrastriatal regions in D₁R expression, and the DA-related neural networks among the midbrain, striatum and the other regions would contribute to a similar D₁R expression pattern throughout the whole brain.

Citation: Fujiwara H, Ito H, Kodaka F, Kimura Y, Takano H, et al. (2012) Association between Striatal Subregions and Extrastriatal Regions in Dopamine D₁ Receptor Expression: A Positron Emission Tomography Study. PLoS ONE 7(11): e49775. doi:10.1371/journal.pone.0049775

Editor: Bernard Le Foll, Centre for Addiction and Mental Health, Canada

Received: July 17, 2012; **Accepted:** October 11, 2012; **Published:** November 21, 2012

Copyright: © 2012 Fujiwara et al. This is an open-access article distributed under the terms of the Creative Commons Attribution License, which permits unrestricted use, distribution, and reproduction in any medium, provided the original author and source are credited.

Funding: This study was supported by a consignment expense for Molecular Imaging Program on "Research Base for PET Diagnosis" from the Ministry of Education, Culture, Sports, Science and Technology (MEXT), Japanese Government. The funders had no role in study design, data collection and analysis, decision to publish, or preparation of the manuscript.

Competing Interests: The authors have declared that no competing interests exist.

* E-mail: hito@nirs.go.jp

Introduction

The mesencephalic dopamine (DA) system is the main DA system, and it is related to affective and cognitive functions such as reward processing. The system is roughly divided into different groups, A9 and A10, whose cells are located in different regions of the midbrain, the substantia nigra (SN) and the ventral tegmental area (VTA), respectively. These different projections have been reported in rats, monkeys and humans [1,2,3]. The striatum provides the main input from the midbrain. Histologically, this region is not uniform, and it is functionally divided into striatal subdivisions termed associative (AST), sensorimotor (SMST) and limbic (LST), which process information related to cognitive, sensorimotor, and emotional functions, respectively [4]. The concept is based on neural networks termed "Cortico-striatal-thalamo-cortical loops" [5]. In brief, functionally different networks between each striatal subdivision and extrastriatal regions would exist through dopaminergic, glutaminergic and gamma-aminobutylic acid (GABA) neurotransmissions, and these

neurotransmissions interact with each other [6]. Regarding DA projections, A9 would project to the dorsal striatum (AST and SMST) and A10 to LST. A10 would have direct projections to cortical regions as well.

Ample literature describes the differential DA pathways and the distribution of DA receptors by *in vitro* methods, including distinct DA projections from the midbrain to the dorsal and ventral striatum [7], region-by-region differences of DA receptor distribution in the cortex [8], and alterations of DA projections in several neuropsychiatric illnesses [9,10]. Regarding neuroimaging studies, several reports have suggested the relationships between DA functions and cognitive functions [11,12], and the association of DA functions with the pathophysiology of neuropsychiatric illnesses [10,13]. Thus, it is worthwhile investigating DA functions in their relationships among different regions of the human brain by *in vivo* methods, especially between the DA receptor-rich regions (striatum) and other regions, which could provide new insights for studies of DA-

related cognitive functions and pathophysiologies of neuropsychiatric disorders.

However, at present, there have been few neuroimaging studies that directly demonstrated the relationship between striatal subdivisions and extrastriatal (ie., cortical) regions, which also have DA projections from the midbrain in DA receptor expressions. Clarification of this issue would lead to a better understanding of DA functions in region-by-region relationships, considering the manner of DA projections from the midbrain and the distinction of their targets, that is, the most DA-rich region, the striatum and cortical regions. In this sense, one possibility might be that DA receptor expressions are regulated differentially according to their origin of DA projection.

However, very recently, one positron emission tomography (PET) study has suggested that there was no relationship between cortical DA D₂ receptor (D₂R) densities and those of striatal regions [14]. Regarding another dopamine receptor subtype, DA D₁ receptor (D₁R), Rieckmann et al. reported that subdivisional striatal D₁R densities are similarly associated with those of multiple cortical regions, concluding that D₁R expressions in striatal and extrastriatal regions are not regulated independently, despite DA projections from different midbrain areas. In their study [15], interregional association of D₁R was assessed by a conventional method in terms of the analysis of PET images, that is, regions of interests (ROIs) were traced manually on each individual subject's image without spatial normalization. This method is potentially advantageous in preserving the information of raw images, but the results may partially depend on the rater's procedure. Thus, the conventional manual tracing method and another method, voxel-by-voxel analysis, could be expected to complement each other in respect to confirming their reliability and validity.

The aim of the present study was to investigate the relationship between striatal subdivisions and extrastriatal regions in DA D₁ receptor (D₁R) expression using PET in healthy humans by voxel-by-voxel analysis, a potentially more objective method than the manual ROI-tracing method used by Rieckmann et al. [15]. We hypothesized that D₁R availability of the striatum would be associated with the availability of extrastriatal regions regardless of its differential subdivisions, i.e., the D₁R expressions of AST, SMST and LST would be similarly correlated with the expressions of extrastriatal regions.

Methods

Ethics Statement

In accordance with the Helsinki Declaration of Human Rights (2000), written informed consent was obtained from all volunteers after detailed explanation of the study. This study protocol was approved by the Ethics and Radiation Safety Committees of the National Institute of Radiological Sciences, Chiba, Japan.

Subjects

A total of 30 healthy men (age = 25.4 ± 5.9 [mean ± SD]) were recruited, and they gave their written informed consent for participation in this study. The subjects were free of somatic, neurological or psychiatric disorders on the basis of their medical history and magnetic resonance imaging (MRI) of the brain. They had no history of current or previous drug abuse.

PET Procedures

The PET system ECAT EXACT HR+(CTI-Siemens, Knoxville, TN) was used for all PET studies. The system provides 63 planes with a 15.5 cm axial field of view. The intrinsic spatial

resolution was 4.3 mm in-plane and 4.2 mm full-width at half maximum (FWHM) axially. With a Hanning filter (cut-off frequency: 0.4 cycle/pixel), the reconstructed in-plane resolution was 7.5 mm FWHM. Data were acquired in three-dimensional mode. Scatter was corrected [16]. A head fixation device with thermoplastic attachments for individual fit minimized head movement during PET measurements. A 10-min transmission scan using a ⁶⁸Ge-⁶⁸Ga line source was performed for correction of attenuation. After intravenous rapid bolus injection of [¹¹C]SCH23390, data were acquired for 60 min in a consecutive series of time frames. The frame sequences consisted of thirty 2-min frames. Injected radioactivity was 197–235 MBq and specific radioactivity was 23–81 GBq/μmol at the time of injection.

MRI Procedures

All MRI scanning was performed with a 1.5-T MR scanner (Philips Medical Systems, Best, The Netherlands). Three-dimensional volumetric acquisition of a T1-weighted gradient echo sequence produced a gapless series of thin transverse sections (TE: 9.2 ms; TR: 21 ms; flip angle: 30°; field of view: 256 mm; acquisition matrix: 256 × 256; slice thickness: 1 mm).

Calculation of Parametric Images

We used PMOD 3.1 software (PMOD Technologies Ltd., Zurich, Switzerland) for all the steps of the image processing and analysis. All MR images were coregistered to the PET images. MR images were transformed into standard brain size and shape by linear and non-linear parameters (anatomic standardization). The brain templates for anatomic standardization were Montreal Neurological Institute (MNI)/International Consortium for Brain Mapping (ICBM) 152 T1 templates as supplied with the PMOD software. All PET images were also transformed into standard brain size and shape by using the same parameters as for the MR images. Thus, brain images of all 30 subjects had the same anatomic format.

Binding potentials (BP_{ND}) were calculated by the reference tissue model method on a voxel-by-voxel basis [17,18]. BP_{ND} refers to the ratio of specifically bound radioligand to that of nondisplaceable radioligand in tissue at equilibrium. BP_{ND} is the typical measurement from reference tissue methods, as it compares the concentration of radioligand in receptor-rich to receptor-free regions [19]. In this study, parametric images, in which each voxel has its own BP_{ND} value, were generated using the cerebellum, a receptor-free region, as reference tissue.

Data Analysis

ROIs were drawn on a standardized and averaged MR image of all the subjects, and this ROI object map was applied to the parametric images of each of the 30 subjects, that is, only one ROI object map was applied to the parametric images of each of the 30 subjects completely in the same manner. Thus, this method is a more objective way to measure BP_{ND} values than that with different ROIs for each subject. Boundaries for ROIs of striatal functional subdivisions were defined for each striatal subregion [20,21]. The definition of the “functional subdivisions” was as follows: AST consisted of the precommissural dorsal caudate, precommissural dorsal putamen, and postcommissural caudate, and the BP_{ND} values of AST were calculated as the spatially weighted average of these three subregions; SMST and LST corresponded to the postcommissural putamen and ventral striatum, respectively (Figure 1).

Regarding the statistics, multiple regression analysis was performed by statistical parametric mapping (SPM5, Wellcome Trust Centre for Neuroimaging, London, UK) on a voxel-by-voxel

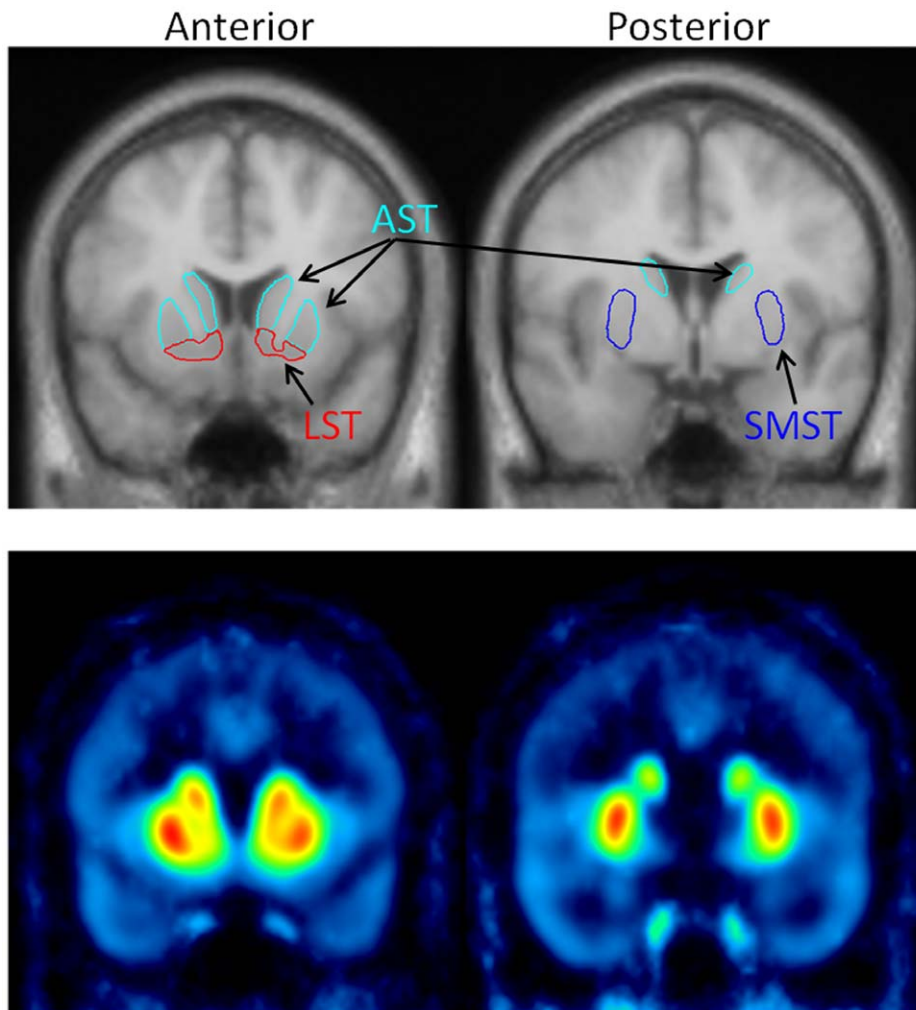


Figure 1. Definition of striatal functional subdivisions. Upper panel: MR images and regions of interest. Lower panel: parametric images corresponding to MR images in the upper panel.
doi:10.1371/journal.pone.0049775.g001

basis after the BP_{ND} values of the striatal subdivisions were obtained. The values of each striatal subdivision were used as covariates of interest in the design matrix to determine the regions correlating with each striatal subdivision in terms of their D₁R expression. Statistical thresholds were as follows: false recovery rate (FDR) $p < 0.05$, extent threshold = 100 voxels. The results of the correlation were visualized in statistical parametric maps.

To confirm the result of voxel-by-voxel analysis with SPM5, Pearson's correlation coefficient was also calculated using the actual BP_{ND} values in extrastriatal regions with SPSS version 18.0. The ROIs of extrastriatal regions included thalamic, cingulate, prefrontal, temporal and occipital regions, and the boundaries for the ROIs were based on previous reports [21,22].

Results

The BP_{ND} values of AST, SMST, and LST were 1.61 ± 0.26 , 1.70 ± 0.24 , and 1.36 ± 0.19 , respectively. The values were quite similar to our previous data for measuring D₁R in the striatum [22].

By voxel-by-voxel analysis, the values of each striatal subdivision (i.e., AST, SMST and LST) were positively correlated with those of multiple brain regions, i.e., frontal, temporal, parietal and

occipital regions in a similar manner (Figure 2). Regarding the interrelationships among striatal subdivisions, mutual positive correlation was found among AST, SMST and LST in D₁R BP_{ND} (Figure 2).

In addition, the interregional positive correlations in BP_{ND} were revealed to be significant by the ROI analysis, that is, by the analysis using SPSS software with the actual BP_{ND} values of each ROI (Figure 3).

Discussion

The critical role of the DA system in cognitive functions has been suggested repeatedly, and abnormalities of the system have also been implicated in the pathophysiology of several neuropsychiatric disorders such as schizophrenia [13,23] and Parkinson's disease [10]. The main focus of those findings was restricted exclusively to D₁R functions or abnormalities in terms of their expression levels, distribution, and localization in several brain regions. In this sense, there is little evidence that refers to a direct association of a DA-rich region (the striatum) and extrastriatal regions, where DA receptors are present. It has been suggested that cognitive functions such as executive function would be associated with the manner of interregional relationship in D₁R

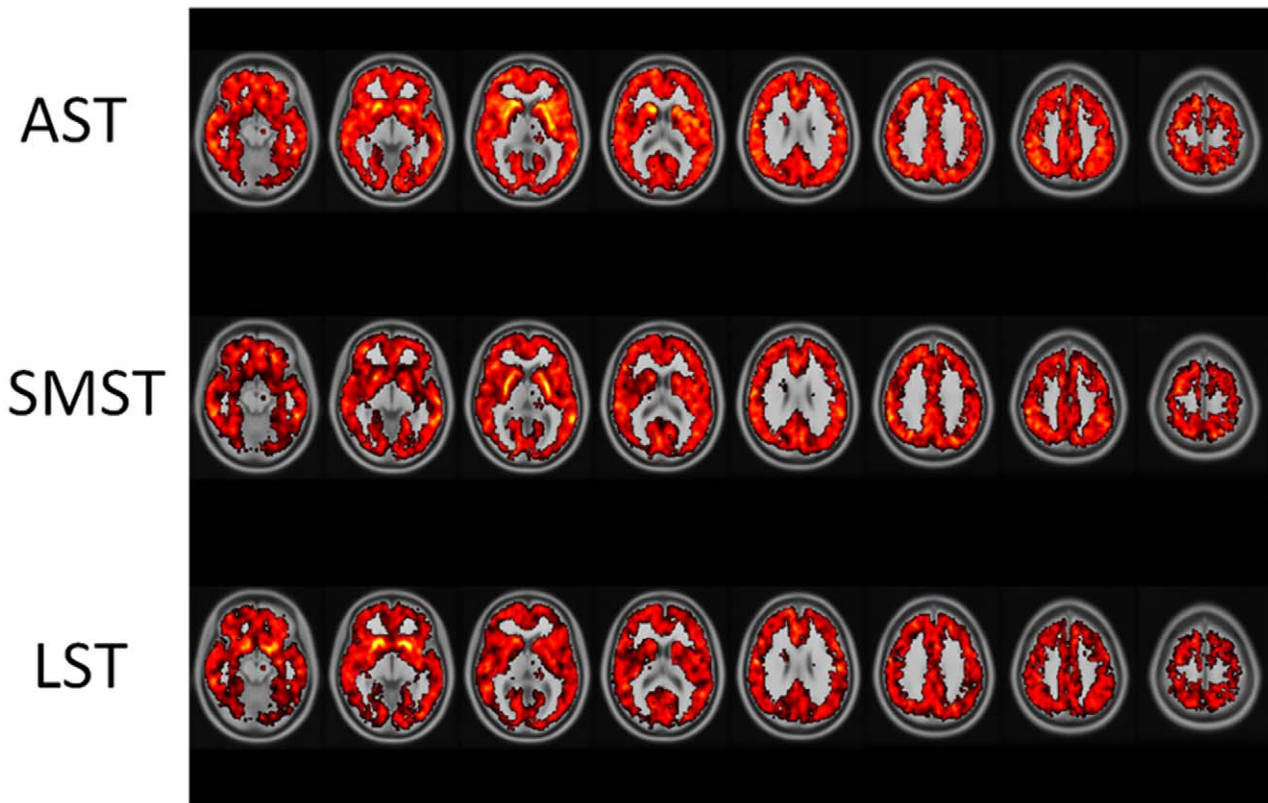


Figure 2. Correlation map of striatal functional subdivisions and extrastriatal regions, in addition to that of within striatal subdivisions. Correlations in brighter color (yellow) represent higher ones in terms of magnitude than those in red.
doi:10.1371/journal.pone.0049775.g002

expression [15], and therefore it would be worthwhile investigating the interregional patterns of bindings for studies of neuropsychiatric disorders in which cognitive dysfunction based on DA system dysregulation is considered to exist, such as schizophrenia and Parkinson’s disease.

We could replicate the findings of a previous study by Rieckmann et al. [15] that demonstrated the association of striatal subdivisions and cortices by a conventional manual tracing method. The major findings of the present study were as follows: (a) BP_{ND} values of all striatal subdivisions (i.e., AST, SMST and LST) were significantly correlated with those of multiple brain regions on a voxel-by-voxel basis: (b) regarding the interrelationships among striatal subdivisions, they were also mutually correlated in their BP_{ND} values.

These results suggest that D₁R expressions in striatal subdivisions and extrastriatal regions are regulated uniformly. This could

be explained by the complex connections of DA pathways throughout the whole brain. DA innervations from VTA and SN differentially project to striatal subdivisions as well as the cortical regions through A9 and A10, whereas glutaminergic innervations from cortical regions project to both VTA and SN via the striatum. Regarding the connection of the midbrain with the striatum, the midbrain has reciprocal projections both to (DA) and from (GABA) the striatum, with overlapping. Thus, DA pathways are connected via these pathways [4,24], and this would lead to similarity of the regulation of D₁R expressions among multiple brain areas, although differential DA projection from the midbrain (i.e., A9 and A10) is a part of the DA-related neural network.

Furthermore, striatal outputs to the cortex, which are altered by D₁R stimulation/blockade, would affect immediate-early gene expressions such as c-fos expression (as functional markers) in cortical regions [25]. If the D₁R function in each striatal

	AST	SMST	LST	ACC	MPFC	DLPFC	OFC	Temporal	Occipital	Parietal	Thalamus
AST		643 ^{**}	587 ^{**}	.436 ^{**}	.361 ^{**}	.247 ^{**}	.507 ^{**}	.637 ^{**}	.188	.305 ^{**}	.372 ^{**}
SMST			363 ^{**}	.583 ^{**}	.333 ^{**}	.233 ^{**}	.622 ^{**}	.706 ^{**}	.086	.338 ^{**}	.410 ^{**}
LST				.215 ^{**}	.185 [*]	.136 [*]	.327 ^{**}	.348 ^{**}	.079	.162 [*]	.228 ^{**}

Figure 3. Correlations between striatum and extrastriatal regions and intercorrelations among striatal subdivisions in dopamine D₁ receptor BP_{ND}. ^{**}P<0.01, ^{*}P<0.05. Correlations in red: intercorrelations among striatal subdivisions. Correlations in blue: correlations between striatal subdivisions and extrastriatal regions. R² values are presented for the correlations.
doi:10.1371/journal.pone.0049775.g003

subdivision uniformly affects the expressions in cortical regions, each striatal subdivision and the cortical regions are mutually correlated in a similar manner. In this study, interrelationships among striatal subdivisions were found in their BP_{ND} values, thus providing a convincing explanation for the uniform relationships between different striatal subdivisions and cortical regions in their D₁R expression.

Finally, D₁R expressions throughout the whole brain might be generally (genetically) associated with each other, i.e., the larger the expressions in the striatum, the larger in the other regions as well. However, further investigations including postmortem and animal studies would be needed to clarify the genetic influence on the D₁R expression throughout the whole brain.

Several limitations need to be pointed out in the current study. First, the age of the participants was restricted to a relatively younger generation. Second, the subjects were all males. Further study with both male and female participants of a wider age range will be needed to give the findings a more generalized significance. Third, the reference tissue model has a potential limitation in terms of its theory, the assumption of the same non-specific binding throughout the whole brain, which might lead to a systemic bias in respect to between-region correlations of the bindings. To our knowledge, there has been no study that suggested a higher variation of receptor density corresponding to BP_{ND} in different regions compared with that of non-specific binding in the human population. However, the non-specific binding in tissue has been reported to be generally constant across species including humans [26]. Thus, the correlation of the current study would reflect the relationship in receptor density in itself rather than inter-individual variations of non-specific binding. Further theoretical and methodological improvements would be needed to assess interregional correlations of binding potentials more accurately, considering the influence of inter-individual variations in non-specific binding. Fourth, it could be argued that the interregional associations in the bindings in the current study may reflect the association in the serotonergic system in addition to the DA system because of the affinity of SCH23390 to 5-HT_{2A}

receptors in cortical regions. However, this confounding effect of cortical 5-HT_{2A} binding would not be so critical in terms of the analysis of striatal and extrastriatal correlations because striatal binding reflects D₁R density only, whereas the bindings of cortical regions are significantly confounded by 5-HT_{2A} receptors [15]. In the present study, the BP_{ND} values of striatal and extrastriatal regions were highly correlated, and thus the correlations are not always considered to represent different receptor associations. Finally, in general, completely accurate image processing (namely, coregistration and normalization) is difficult in voxel-based analyses. In this study, the accuracy of image processing and ROI adjustment on parametric images was confirmed by visual inspection for each subject. However, at present, there is no absolute procedure in this regard because of the variation of the individual's brain in respect to its shape, size and sulcal anomaly. Further improvements in image processing technique would be necessary to raise the reliability of voxel-wise analysis.

Conclusions

In conclusion, differential striatal functional subdivisions could be associated with cortical regions in terms of D₁R expression in a similar manner. Although DA cell projections from VTA and SN innervate the striatum and extrastriatal regions via different DA pathways, DA-related neural networks throughout the whole brain including both striato-midbrain and cortical-striato connections would contribute to the association of the striatal subdivisions and extrastriatal regions in D₁R expression. Further study will be needed to clarify the mechanisms of D₁R expression regarding the interactions between DA and the other neurotransmitter systems such as glutamate, serotonin and GABA, and the mechanisms at molecular and genetic levels in the respective brain regions.

Author Contributions

Conceived and designed the experiments: HI TS HF. Performed the experiments: HI HT. Analyzed the data: HF YK FK. Wrote the paper: HF.

References

- Dahlström A, Fuxe K (1964) A method for the demonstration of monoamine-containing nerve fibres in the central nervous system. *Acta Physiol Scand* 60: 293–4.
- Di Carlo FJ, Melgar MD, Haynes LJ, Crew MC (1973) Metabolic profile of a new immunosuppressive agent, oxisuran: binding, RE stimulation, drug interaction. *J Reticuloendothel Soc* 14(4): 387–97.
- Felten DL, Sladek JR Jr. (1983) Monoamine distribution in primate brain V. Monoaminergic nuclei: anatomy, pathways and local organization. *Brain Res Bull* 10: 171–284.
- Joel D, Weiner I (2000) The connections of the dopaminergic system with the striatum in rats and primates: an analysis with respect to the functional and compartmental organization of the striatum. *Neuroscience* 96: 451–74.
- Alexander GE, Crutcher MD (1990) Functional architecture of basal ganglia circuits: neural substrates of parallel processing. *Trends Neurosci* 13: 266–71.
- Carlsson A, Waters N, Carlsson ML (1999) Neurotransmitter interactions in schizophrenia-therapeutic implications. *Eur Arch Psychiatry Clin Neurosci* 249: 37–43.
- Haber SN, McFarland NR (1999) The concept of the ventral striatum in nonhuman primates. *Ann N Y Acad Sci* 877: 33–48.
- Hurd YL, Suzuki M, Sedvall GC (2001) D1 and D2 dopamine receptor mRNA expression in whole hemisphere sections of the human brain. *J Chem Neuroanat* 22: 127–37.
- Grace AA (1991) Phasic versus tonic dopamine release and the modulation of dopamine system responsivity: a hypothesis for the etiology of schizophrenia. *Neuroscience* 41: 1–24.
- Gaspar P, Duyckaerts C, Alvarez C, Javoy-Agid F, Berger B (1991) Alterations of dopaminergic and noradrenergic innervations in motor cortex in Parkinson's disease. *Ann Neurol* 30: 365–74.
- Takahashi H, Kato M, Takano H, Arakawa R, Okumura M, et al. (2008) Differential contributions of prefrontal and hippocampal dopamine D1 and D2 receptors in human cognitive functions. *J Neurosci* 28: 12032–12038.
- Takahashi H, Matsui H, Camerer C, Takano H, Kodaka F, et al. (2010) Dopamine D₁ receptors and nonlinear probability weighting in risky choice. *J Neurosci* 30: 16567–72.
- Suhara T, Okubo Y, Yasuno F, Sudo Y, Inoue M, et al. (2002) Decreased dopamine D2 receptor binding in the anterior cingulate cortex in schizophrenia. *Arch Gen Psychiatry* 59: 25–30.
- Cervenka S, Varron A, Fransen E, Halldin C, Farde L (2010) PET studies of D2-receptor binding in striatal and extrastriatal brain regions: biochemical support in vivo for separate dopaminergic systems in humans. *Synapse* 64: 478–85.
- Rieckmann A, Karlsson S, Larsson P, Brehmer Y, Fischer H, et al. (2011) Dopamine D1 receptor associations within and between dopaminergic pathways in younger and elderly adults: link to cognitive performance. *Cereb Cortex* 21: 2023–32.
- Watson CC, Newport D, Casey ME (1996) A single scatter simulation technique for scatter correction in 3D PET. In: Grangeat P, Amans JL (Eds.), *Three-Dimensional Image Reconstruction in Radiology and Nuclear Medicine*. Kluwer Academic Publishers, Dordrecht, The Netherlands, 255–268.
- Gunn RN, Lammertsma AA, Hume SP, Cunningham VJ (1997) Parametric imaging of ligand-receptor binding in PET using a simplified reference region model. *NeuroImage* 6: 279–87.
- Lammertsma AA, Hume SP, 1996. Simplified reference tissue model for PET receptor studies. *NeuroImage* 4, 153–158.
- Innis RB, Cunningham VJ, Delforge J, Fujita M, Gjedde A, et al. (2007) Consensus nomenclature for in vivo imaging of reversibly binding radioligands. *J Cereb Blood Flow Metab* 27: 1533–9.
- Martinez D, Slifstein M, Broft A, Mawlawi O, Hwang DR, et al. (2003) Imaging Human mesolimbic dopamine transmission with positron emission tomography. part II: amphetamine-induced dopamine release in the functional subdivisions of the striatum. *J Cereb Blood Flow Metab* 23: 285–300.

21. Abi-Dargham A, Mawlawi O, Lombard L, Gil R, Martinez D et al. (2002) Prefrontal Dopamine D1 Receptors and Working Memory in Schizophrenia. *J Neurosci* 22: 3708–19.
22. Ito H, Takahashi H, Arakawa R, Takano H, Suhata T (2008) Normal database of dopaminergic neurotransmission system in human brain measured by positron emission tomography. *NeuroImage* 39: 555–565.
23. Okubo Y, Suhara T, Suzuki K, Kobayashi K, Inoue O, et al. (1997) Decreased prefrontal dopamine D1 receptors in schizophrenia revealed by PET. *Nature* 385(6617): 634–6.
24. Haber SN, Fudge JL, McFarland NR (2000) Striatonigrostriatal pathways in primates form an ascending spiral from the shell to the dorsolateral striatum. *J Neurosci* 20: 2369–82.
25. Steiner H, Kitai ST (2000) Regulation of rat cortex function by D1 dopamine receptors in the striatum. *J Neurosci* 20: 5449–60.
26. Summerfield SG, Lucas AJ, Porter RA, Jeffrey P, Gunn RN, et al. (2008) Toward an improved prediction of human in vivo brain penetration. *Xenobiotica* 38: 1518–35.