

CORRECTION

Correction: Conservation and lineage-specific rearrangements in the GOBP/PBP gene complex of distantly related ditrysian Lepidoptera

The *PLOS ONE* Staff

There is a typographical error in the [Fig 4](#) caption. “Sourrounding” should be “surrounding.” Please see the corrected [Fig 4](#) caption here.

A black square incorrectly appears over [Fig 4](#). Please see the corrected figure here. The publisher apologizes for the error.



OPEN ACCESS

Citation: The *PLOS ONE* Staff (2018) Correction: Conservation and lineage-specific rearrangements in the GOBP/PBP gene complex of distantly related ditrysian Lepidoptera. *PLoS ONE* 13(5): e0197528. <https://doi.org/10.1371/journal.pone.0197528>

Published: May 10, 2018

Copyright: © 2018 The PLOS ONE Staff. This is an open access article distributed under the terms of the [Creative Commons Attribution License](#), which permits unrestricted use, distribution, and reproduction in any medium, provided the original author and source are credited.

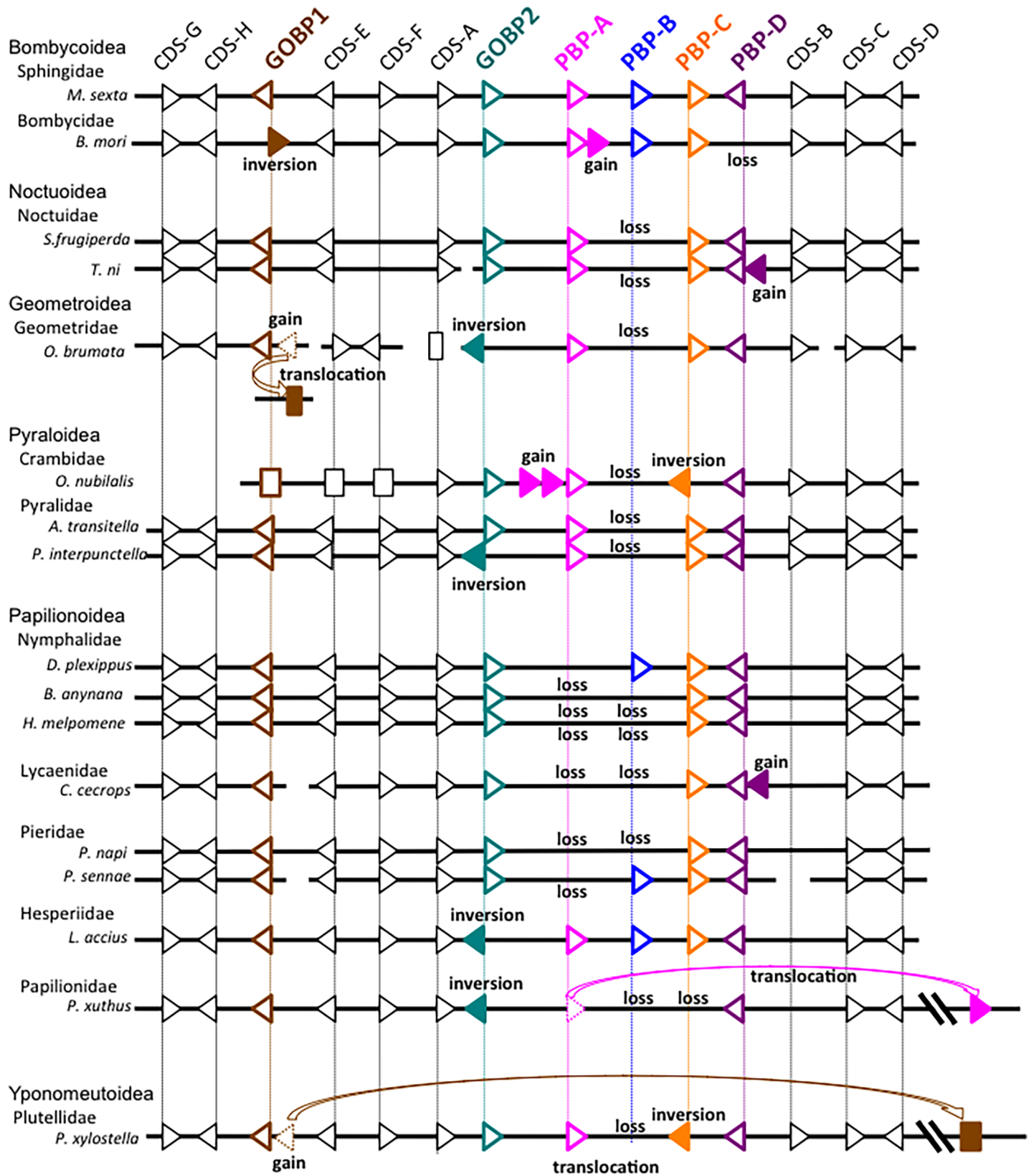


Fig 4. Schematic representation of the order and transcriptional orientation of CDSs located within and surrounding the GOBP/PBP complex of seventeen lepidopteran species. Arrowheads represent CDSs for which transcriptional orientation is identified. Squares represent CDSs for which transcriptional orientation is not identified. Closed arrowheads and squares represent lineage-specific gains or inversions. See S3 Table for details. brown, GOBP1; green, GOBP2; magenta, PBP-A; blue, PBP-B; orange, PBP-C; purple, PBP-D.

<https://doi.org/10.1371/journal.pone.0197528.g001>

Reference

1. Yasukochi Y, Yang B, Fujimoto T, Sahara K, Matsuo T, Ishikawa Y (2018) Conservation and lineage-specific rearrangements in the GOBP/PBP gene complex of distantly related ditrysian Lepidoptera. *PLoS ONE* 13(2): e0192762. <https://doi.org/10.1371/journal.pone.0192762> PMID: [29425254](https://pubmed.ncbi.nlm.nih.gov/29425254/)