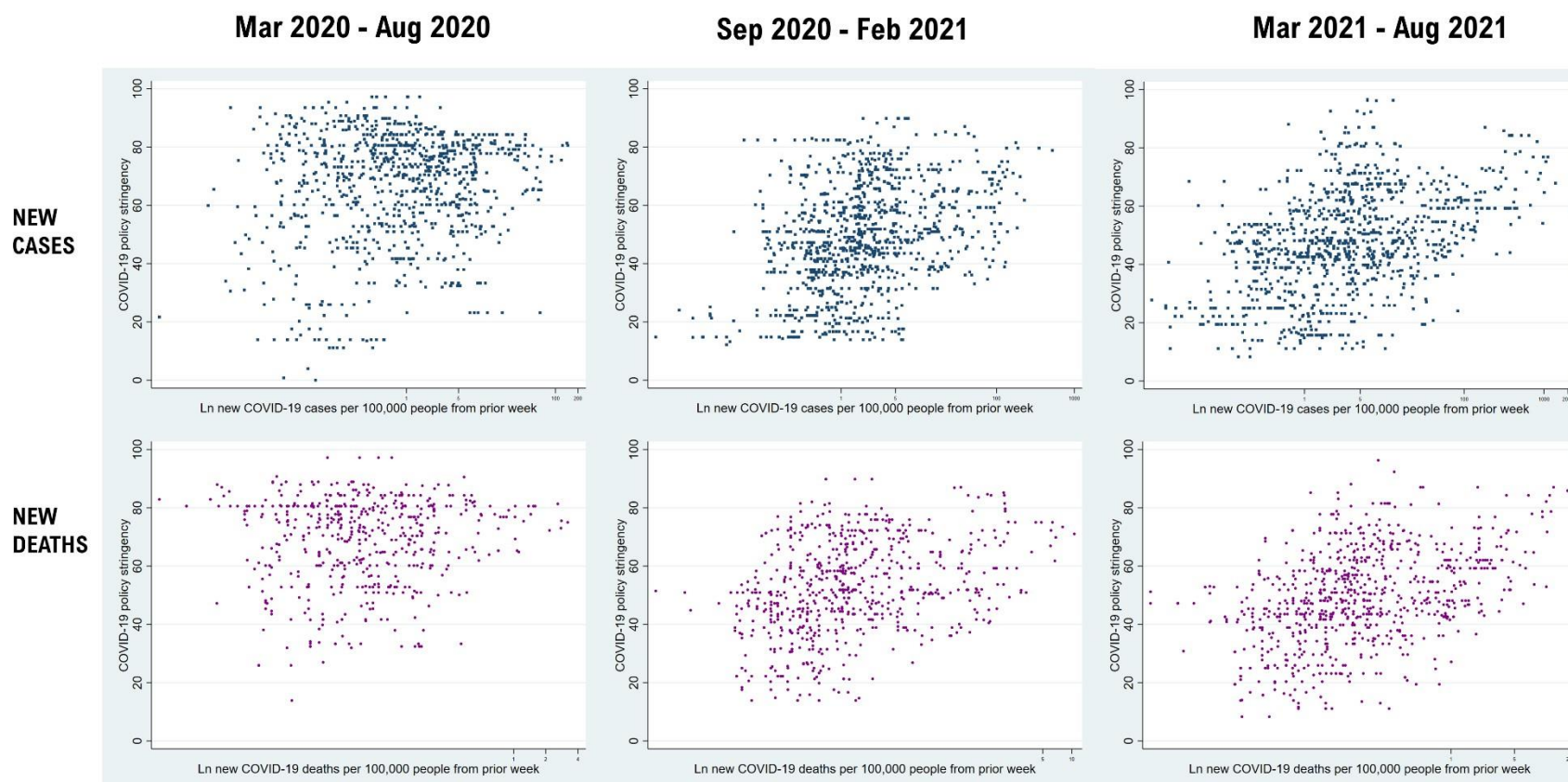


## ONLINE SUPPLEMENTARY DOCUMENT

**Title:** Drivers of COVID-19 policy stringency in 175 countries and territories: COVID-19 cases and deaths, gross domestic products per capita, and health expenditures

**Authors:** Mohamed F. Jalloh, Zangin Zeebari<sup>2</sup>, Sophia A. Nur, Dimitri Prybylski, Aasli A. Nur, Avi J. Hakim, Maike Winters, Laura C. Steinhardt, Wangeci Gatei, Saad B. Omer, Noel T. Brewer, Helena Nordenstedt



**Figure S1. Association of stringency with logarithm of new cases and deaths per 100,000 in **Africa**, March 2020—August 2021.**

ONLINE SUPPLEMENTARY DOCUMENT

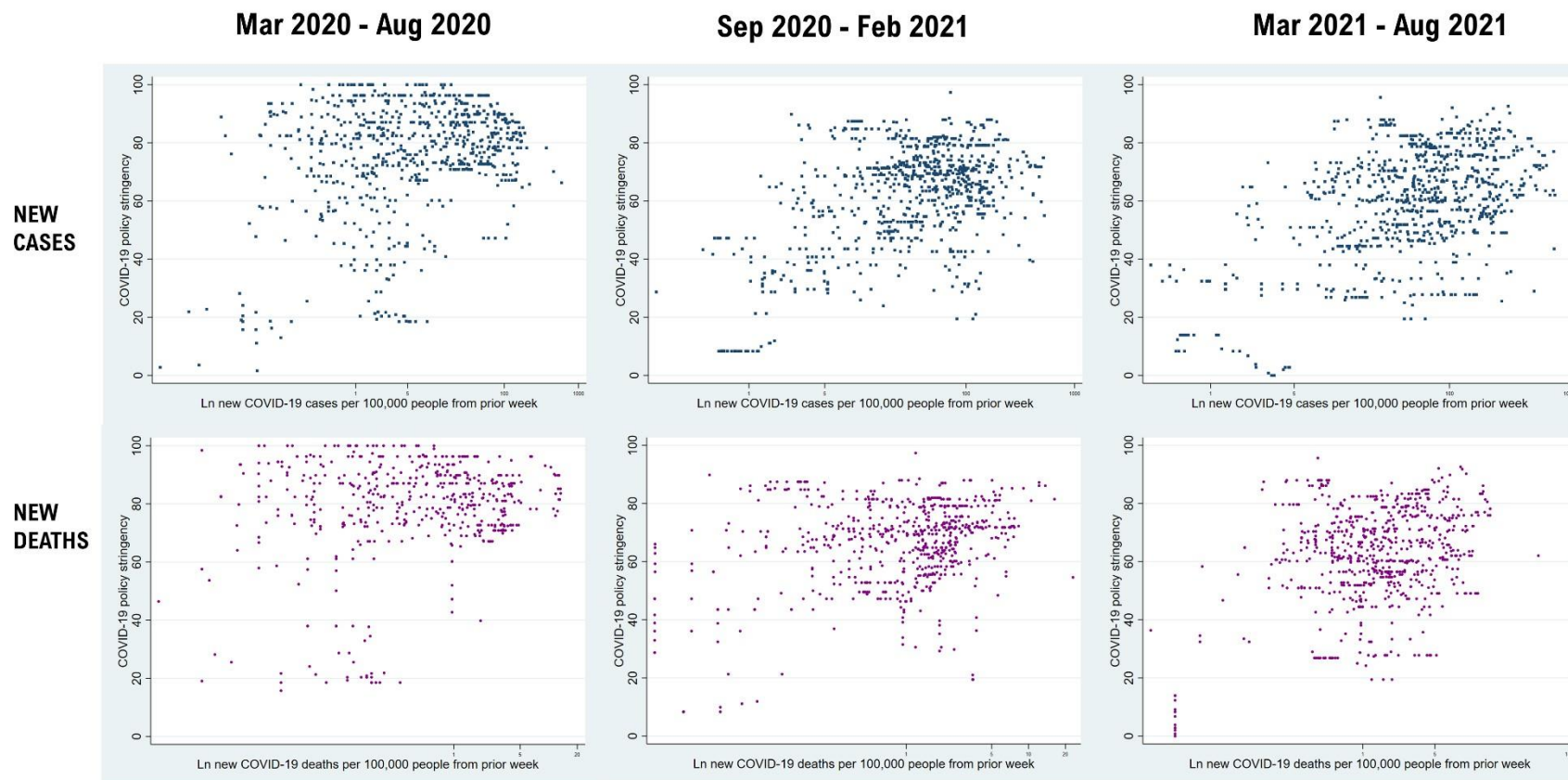


Figure S2. Association of stringency with the logarithm of new cases and deaths per 100,000 in the **Americas** region, March 2020—August 2021.

ONLINE SUPPLEMENTARY DOCUMENT

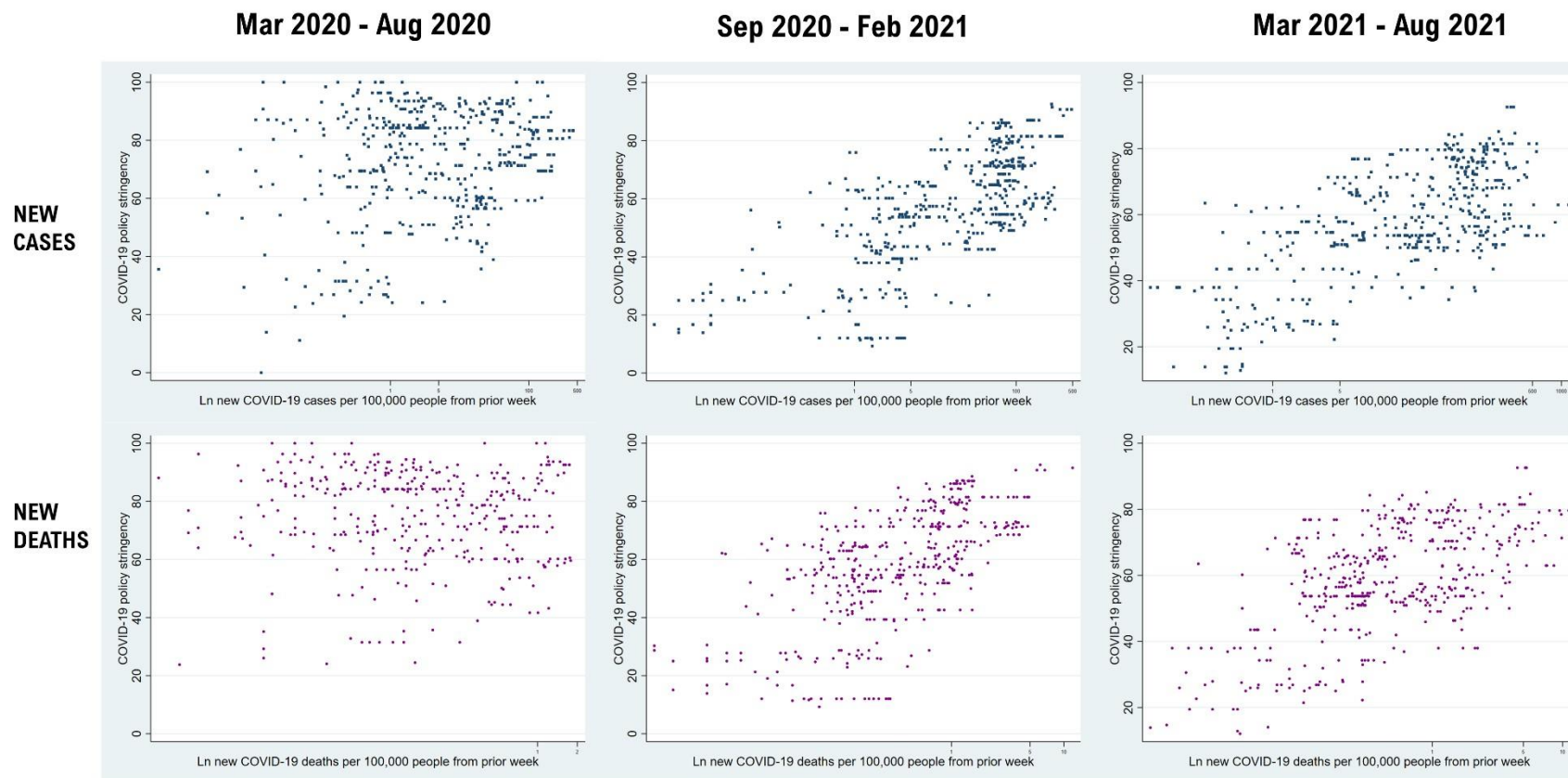


Figure S3. Association of stringency with the logarithm of new cases and deaths per 100,000 in Eastern Mediterranean region, March 2020—August 2021.

ONLINE SUPPLEMENTARY DOCUMENT

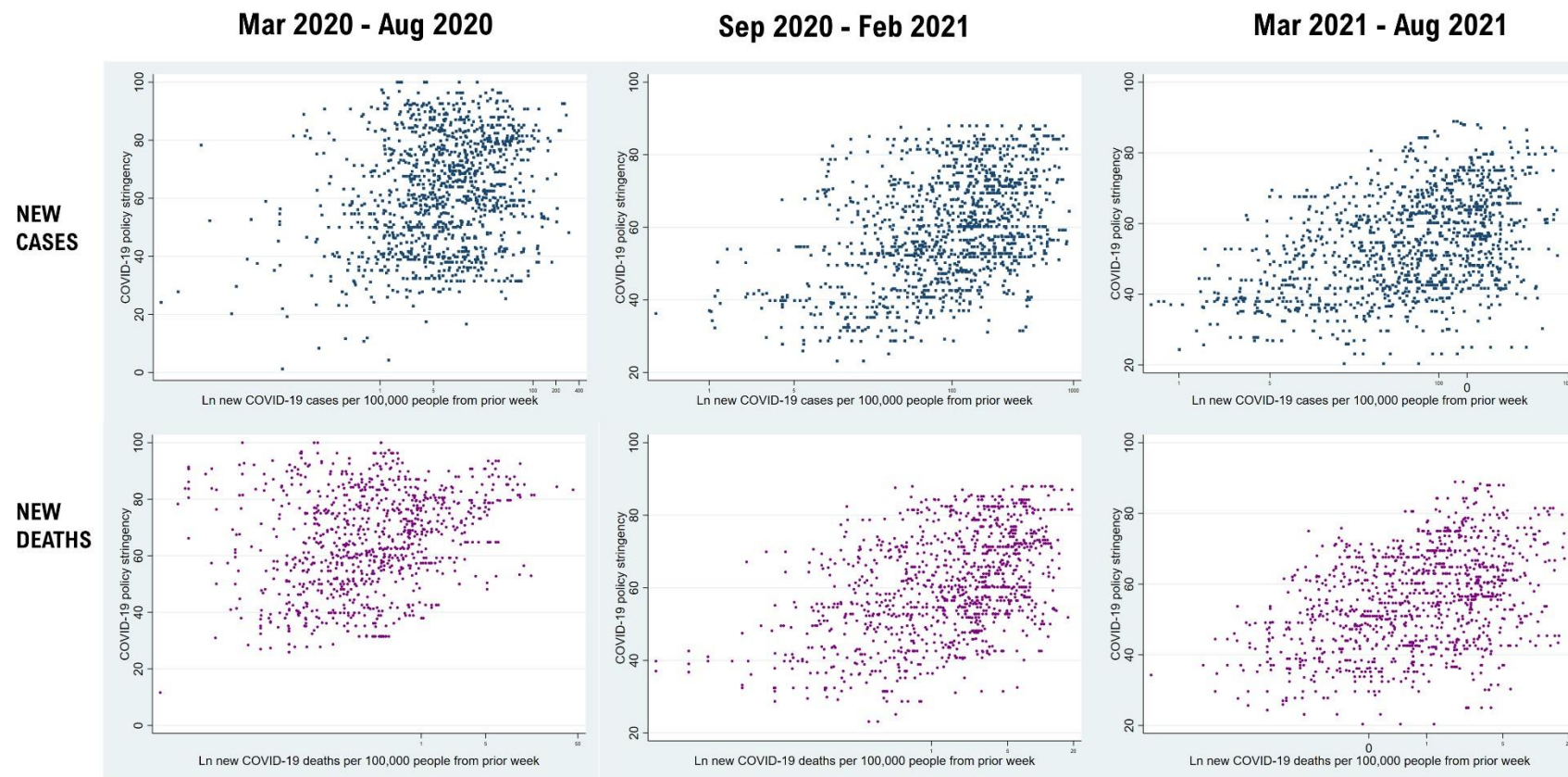
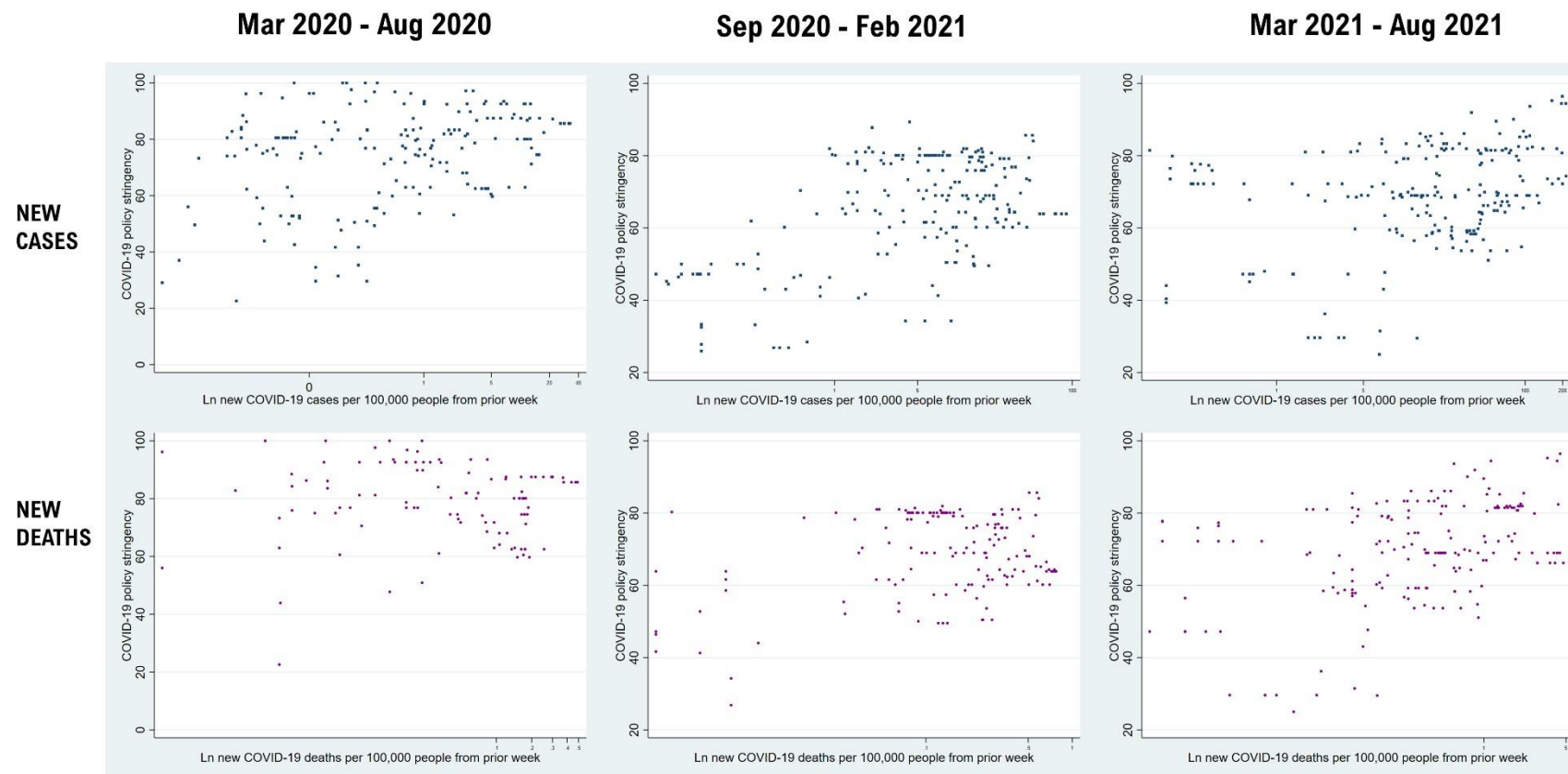


Figure S4. Association of stringency with logarithm of new cases and deaths per 100,000 in the **European region**, March 2020—August 2021.



## ONLINE SUPPLEMENTARY DOCUMENT



**Figure S5. Association of stringency with logarithm of new cases and deaths per 100,000 in the South-east Asia region, March 2020—August 2021.**

ONLINE SUPPLEMENTARY DOCUMENT



Figure S6. Association of stringency with logarithm of new cases and deaths per 100,000 in the **Western Pacific region**, March 2020—August 2021.