

Factors affecting the occurrence of proximal endoleak after endovascular abdominal aortic repair for abdominal aneurysms

Journal of International Medical Research

48(11) 1–9

© The Author(s) 2020

Article reuse guidelines:

sagepub.com/journals-permissions

DOI: 10.1177/0300060520971515

journals.sagepub.com/home/imr



Daniela Mazzaccaro¹ , Girolomina Mazzeo¹,
Gianmarco Zuccon¹, Alfredo Modafferi¹,
Giovanni Malacrida¹, Paolo C. Righini¹,
Massimiliano M. Marrocco-Trischitta¹ and
Giovanni Nano^{1,2}

Abstract

Objective: This retrospective study was performed to assess the clinical and radiological variables associated with proximal type IA endoleak (EL) in patients treated with elective endovascular repair for abdominal aortic aneurysms.

Methods: The chi-square test, t-test, and logistic regression analysis were performed as appropriate. A P value of <0.05 was considered statistically significant.

Results: The data of 79 patients were analyzed. No mortality occurred. During follow-up (median, 28.5 months; interquartile range, 12.8–43.0 months), 10 patients developed type IA EL. In the logistic regression analysis, undersizing of the endograft diameter by <10% significantly affected the occurrence of type IA EL. When the diameter was used for measurements, less oversizing was significantly associated with a higher risk of type IA EL. When the area was used for measurements, oversizing of >20% significantly affected the occurrence of type IA EL.

Conclusion: When sizing endografts, a discrepancy was noted between the measurements of the diameter and area of the proximal neck. The area might represent a more accurate measurement than the axial diameter to optimize the proximal sealing and lower the risk of developing type IA EL.

Corresponding author:

Daniela Mazzaccaro, Operative Unit of Vascular Surgery, IRCCS Policlinico San Donato, San Donato Milanese, Milan, Italy

Emails: dany Mazzaccaro@libero.it;
daniela.mazzaccaro@gmail.com

¹Operative Unit of Vascular Surgery, IRCCS Policlinico San Donato, San Donato Milanese, Milan, Italy

²Department of Biomedical Sciences for Health, University of Milan, Milan, Italy



Keywords

Proximal endoleak, endovascular abdominal aortic repair, abdominal aortic aneurysm, endograft, oversizing, proximal neck area

Date received: 12 June 2020; accepted: 14 October 2020

Introduction

Since its introduction to clinical practice about 30 years ago, endovascular abdominal aortic repair (EVAR) has become beneficial in terms of early survival compared with open repair in anatomically suitable patients.¹ Nevertheless, aortic complications requiring reinterventions are more likely to develop in the mid-term after EVAR than after open repair.² Among these complications, the occurrence of proximal type I endoleak (EL) and endograft migration are the most frequent causes of reinterventions,³ and both require prompt correction because of the persistent risk of aneurysm rupture.

Although achievement of a good seal between the endograft and the proximal aortic neck seems to be a key point,⁴ the factors that predispose to proximal type I EL remain incompletely understood.

The present study was performed to assess the clinical and radiological variables that are significantly associated with the occurrence of proximal type I EL in patients treated with elective EVAR for abdominal aortic aneurysms (AAAs).

Materials and methods

Ethical approval was obtained from the Ethics Committee of San Raffaele Hospital (167/int/2020) for this retrospective, single-center study. Explicit patient consent was not required.

Clinical and radiological data of patients who underwent elective EVAR for AAAs

from January 2011 to December 2018 were retrospectively collected and analyzed. Patients were included in the study if they had complete computed tomography angiography (CTA) data available for both the preoperative analysis and a ≥ 1 -year follow-up. Patients who had undergone CTA scans with a slice thickness of >1.5 mm per layer were excluded.

All patients underwent preoperative CTA of the abdomen to evaluate the feasibility of endovascular treatment and planning of the procedure. The surgery was performed in a dedicated operating room equipped with a mobile X-ray machine. The EVAR procedure was performed using a standard technique⁵ according to the instructions for use (IFU) reported for each endograft. Patients were excluded from standard EVAR if they had inadequate iliac-femoral access, if the aortic neck diameter was >32 mm, if the aortic neck length was <15 mm, and if the proximal aortic neck angulation was $\geq 60^\circ$. The patients were followed up three times during the first year postoperatively (at 1, 6, and 12 months) using a duplex scan. A CTA scan was also performed at 12 months. After the first year, the patients underwent an annual duplex scan. CTA was performed if complications were detected or the duplex scan was nondiagnostic. In addition, thoracoabdominal CTA was performed every 3 years to evaluate possible progression of the aneurysmal pathology in the thoracoabdominal or thoracic district.

The following clinical data were extracted from the medical records: sex, age, presence of cardiovascular risk factors, and history of oral anticoagulant drug use. Cardiovascular risk factors included the presence of diabetes mellitus (defined as a fasting glucose concentration of >100 mg/dL or the intake of at least one drug to control the serum glucose concentration), hypertension (defined as systolic blood pressure of >140 mmHg and/or diastolic blood pressure of >90 mmHg, or as the intake of at least one drug to control the blood pressure), smoking habit (defined as current or past smoker versus no smoker), coronary artery disease, chronic renal failure (defined as an estimated glomerular filtration rate of <60 mL/min/1.73 m²), and chronic obstructive pulmonary disease.

The radiological data were collected by viewing the CTA scans using the software Carestream Health® (Algotech India Pvt. Ltd., New Delhi, India) on a transverse plane. The centerline with curved planar reformation and multiplanar reconstruction modes were used to obtain the images for analysis in the coronal and sagittal axes.

For each CTA study, the following variables were measured on the transverse plane perpendicular to the aorta:

- Anteroposterior (AP) (inner-to-inner) diameter of the proximal aortic neck at the level of the emergence of the lower renal artery (level 0) and at 5 and 10 mm lower
- Laterolateral (LL) (inner-to-inner) diameter of the proximal aortic neck at level 0 and at 5 and 10 mm lower
- Area of the proximal aortic neck at level 0 and at 5 and 10 mm lower, including the thrombus and parietal calcifications, and internally to the positioned endograft (in the case of postoperative CTA)

The maximum sac diameter and the length and angulation of the proximal

neck relative to the suprarenal aortic axis were also recorded.

Two independent operators (GMaz and GZ) performed the measurements using the same work tools and the same rules.

The following parameters were also calculated from the preoperative and postoperative recorded data:

- average AP diameter (recorded at level 0 and at 5 and 10 mm lower)
- average LL diameter (recorded at level 0 and at 5 and 10 mm lower)
- average of these last two values [using Lachat's formula: (AP diameter + LL diameter) / 2]
- average of calculated areas (recorded at level 0 and at 5 and 10 mm lower)

The following parameters were also calculated:

- difference between preoperative and postoperative diameters of the proximal neck using Lachat's formula
- difference between preoperative and postoperative areas of the proximal neck

Considering the dimensions of the implanted endograft, the area of the neck of the endograft was calculated from the diameter (d) of the main body, assuming a circular section [area = $\pi \times (d/2)^2$].

Finally, the amount of oversizing of the endograft relative to both the diameter and area of the preoperative native aortic neck was calculated.

The primary outcomes were the occurrence of death and type IA EL during follow-up, defined as the presence of iodinated contrast medium on CTA within the aneurysmal sac and outside the prosthesis lumen, coming from the proximal neck.

All collected data were inserted into a database and analyzed as appropriate using the software Stata/IC (StataCorp, College Station, TX, USA). Continuous

variables are reported as median and interquartile range (IQR), and categorical variables are presented as number (percentage). Kaplan–Meier analysis with the log-rank test was used to estimate the rate of freedom from EL over time. The chi-square test and t-test were used as appropriate to compare variables. Logistic regression analysis was performed to assess any variable that could be associated with the occurrence of EL during follow-up. A P value of <0.05 was considered statistically significant.

Table 1. Patients' demographic and clinical characteristics.

	N = 79
Age, years	74.5 (66.2–78.6)
Female sex	11 (13.9)
Current/past smoker	32 (40.4)
Diabetes mellitus	15 (18.9)
Hypertension	67 (84.1)
COPD	22 (27.8)
Renal failure	12 (15.2)
CAD	27 (34.2)

Data are presented as median (interquartile range) or n (%).

COPD, chronic obstructive pulmonary disease; CAD, coronary artery disease.

Results

During the examined period, 402 patients underwent elective EVAR for AAAs. However, complete data from the preoperative and follow-up analyses were available for only 79 patients. Of these patients, 11 were female (13.9%). The patients' median age was 74.5 years (IQR, 66.2–78.6 years). As shown in Table 1, most patients were affected by hypertension (84.8%), and 40.4% of them had a previous or current smoking habit.

All patients were treated according to the IFU of the chosen endograft (Table 2). The proximal neck diameter was >30 mm (33.6 mm) in only one patient.

An endograft with suprarenal fixation of the proximal neck was placed in most patients (49 patients, 62%): Cook Zenith (Cook Medical LLC, Bloomington, IN, USA) in 37 patients, Incraft (Cordis, Santa Clara, CA, USA) in 10 patients, and Ovation (Endologix, Inc., Irvine, CA, USA) in 2 patients. A Gore Excluder (W.L. Gore and Associates, Flagstaff, AZ, USA) was used in the remaining 30 patients.

Technical success was achieved in all patients; no endoleaks or graft thrombosis

Table 2. Preoperative and postoperative features of aortic aneurysms on computed tomography angiography.

	Preoperative	Postoperative	P value
Sac diameter, mm	56.5 (48.1–64.5)	48.3 (39.3–58.2)	0.44
Proximal neck length, mm	24.2 (17.2–35.3)	23.9 (17.1–34.9)	0.87
Proximal neck angle	32.4° (20.1°–41.2°)	31.2° (18.5°–38.7°)	0.25
Proximal neck diameter, mm	21.4 (19.5–23.2)	21.9 (20.3–24.0)	0.04
Proximal neck area, mm ²	364.4 (303.3–439.6)	377.5 (314.4–439.1)	0.28
Left CIA diameter, mm	13.2 (11.1–15.4)	12.9 (11.0–15.2)	0.54
Left CIA angle	40.2° (28.5°–55.5°)	39.8° (28.3°–54.9°)	0.23
Right CIA diameter, mm	13.3 (11.4–17.2)	13.2 (10.9–16.5)	0.69
Right CIA angle	36.2° (25.7°–46.2°)	35.1° (25.2°–45.8°)	0.08
AAA length, mm	73.2 (50.1–90.3)	72.9 (48.9–89.7)	0.77

Data are presented as median (interquartile range).

Statistically significant P values are indicated by boldface text.

CIA, common iliac artery; AAA, abdominal aortic aneurysm.

was detected in the perioperative period. Moreover, no immediate conversion was required and no mortality occurred.

A good correlation was observed between the measurements performed by the two operators ($K \geq 0.8$ in all cases).

During follow-up (median, 28.5 months; IQR, 12.8–43.0 months), type IA EL was identified in 10 patients, all of whom underwent endovascular correction with a proximal cuff. None of the ELs were associated distal migration of the graft. According to the Kaplan–Meier analysis, the mean rate of freedom from ELs was $97.2\% \pm 1.9\%$ at 1 year and $77.3\% \pm 7.3\%$ at 5 years (Figure 1).

During follow-up, modest dilatation of the proximal neck was noted in terms of diameter (average, 1.11 mm; $P=0.04$) and area (average, 19 mm^2 ; not statistically significant) (Table 2).

The mean oversizing of the diameter that was applied between the endoprosthesis and the preoperative native aortic neck was 30%. However, the mean circular section of the main body of the endograft was about 70% greater than the preoperative

area of the proximal aortic neck that was measured on CTA ($P < 0.00001$).

The logistic regression analysis showed no statistically significant correlation between the clinical factors analyzed and the occurrence of type IA EL (Table 3a). However, the analysis of radiological data showed some significant correlations (Table 3b). In particular, incorrect measurement of the endoprosthesis with undersizing of the graft diameter by $<10\%$ was significantly related to the occurrence of type IA EL ($P=0.01$). In particular, when the diameter was used for measurements, less oversizing was significantly associated with a higher risk of type IA EL ($P=0.003$; correlation coefficient, -2.98). Conversely, when the area was used for measurements, oversizing by $>20\%$ was strongly correlated with the occurrence of type IA EL ($P=0.001$; correlation coefficient, 3.23). Moreover, the theoretical area of the proximal aortic neck calculated from the mean diameter, assuming a circular shape of the aortic neck, was significantly larger than the area that was directly measured (366.1 ± 199.2 vs. $232.4 \pm 128.1 \text{ mm}^2$, respectively; $P < 0.00001$).

The use of endografts with suprarenal fixation did not affect the occurrence of type IA EL.

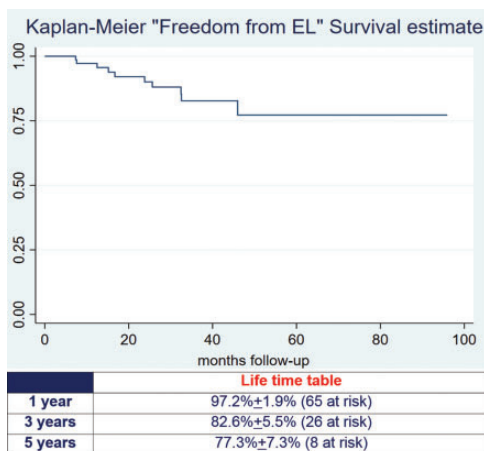


Figure 1. Kaplan–Meier estimate of freedom from EL during follow-up, with life table. EL, endoleak.

Discussion

Since their introduction into clinical practice, endovascular techniques have allowed the treatment of aortic pathologies in patients not suitable for traditional open repair because of their lower invasiveness with reduced postoperative mortality and morbidity rates.⁶

Nevertheless, the advantages of EVAR have been lost over time because of a higher incidence of complications necessitating reinterventions.⁷ Strict postoperative surveillance is therefore needed to detect complications that can lead to reintervention,

Table 3. Regression analysis of (a) clinical and (b) radiological factors affecting the occurrence of type IA endoleak during follow-up.

	Odds ratio	95% CI	Correlation coefficient	P value
(a) Demographic and clinical variables				
Age	1.01	0.89–1.15	0.31	0.76
Male sex	4.11	0.21–78.11	0.94	0.34
Hypertension	0.07	0.004–1.52	–1.68	0.09
Diabetes mellitus	0.90	0.02–29.11	–0.05	0.95
CAD	3.39	0.26–43.34	0.94	0.34
Renal failure	0.39	0.02–7.76	–0.61	0.54
COPD	4.96	0.54–44.97	1.42	0.15
(b) Radiological variables				
Sac diameter	0.22	0.05–2.51	0.51	0.53
Proximal neck length	0.44	0.15–4.26	1.21	0.91
Proximal neck angle	1.32	0.34–2.85	1.05	0.82
Proximal neck diameter	0.23	0.03–1.65	–1.45	0.14
Proximal neck area	1.15	0.91–1.11	1.97	0.05
Left CIA diameter	1.32	0.25–3.65	1.15	0.72
Left CIA angle	0.26	0.13–1.82	1.12	0.24
Right CIA diameter	0.54	0.22–2.45	0.95	0.43
Right CIA angle	0.24	0.95–3.45	1.15	0.45
AAA length	0.15	0.03–3.54	1.24	0.98
Diameter oversizing	0.59	0.42–0.83	–2.98	0.003
Area oversizing	1.22	1.08–1.38	3.23	0.001
Diameter oversizing by <10%	8.37	1.03–67.88	1.99	0.04
Suprarenal fixation	0.92	0.21–3.97	–0.11	0.91

Statistically significant P values are indicated by boldface text.

CI, confidence interval; CAD, coronary artery disease; COPD, chronic obstructive pulmonary disease; CIA, common iliac artery; AAA, abdominal aortic aneurysm.

especially aortic rupture. Among these complications, proximal (type IA) EL is the most frequent cause of reintervention and aortic rupture after EVAR.³

Many studies have been performed to identify the most important factors predisposing to the occurrence of type IA EL. In particular, loss of the proximal seal of the endograft is the most important cause of type IA EL. The proximal seal can be lost over time because of changes in the proximal aortic neck, progression of the native aneurysmal disease, or, according to some authors, geometrical remodeling of the proximal neck due to the radial force of

the endograft acting on the aortic wall, especially in cases of excessive graft oversizing.⁸ In the present study, slight dilation of the proximal aortic neck was recorded over time in terms of both the aortic diameter and area. However, the dilation was not statistically significant and was not related to the occurrence of type IA EL.

A second important and well-recognized issue is anatomic hostility of the proximal aortic neck, which prevents adherence to the IFUs of the employed device. A hostile aortic neck is characterized by marked angulation or shortness of the proximal neck, which can result in difficulty

achieving a proper seal and an increased occurrence of type IA EL.^{9,10} Moreover, patients with a proximal neck of >29 mm in diameter are at higher risk of developing a type IA EL after EVAR.¹¹ Fenestrated or branched EVAR should be considered in such patients if they are unfit for open repair.

As a third issue, appropriate sizing of the endograft has been advocated as important to achieve a proper proximal seal, which can reduce the risk of developing type I EL and distal migration.¹² In particular, the guidelines of the European Society of Vascular Surgery recommend 10% to 20% oversizing of the endograft diameter on the aortic neck¹³ to optimize the seal. In their review, Van Prehn et al.¹⁴ found that oversizing by up to 25% may reduce the risk of type IA EL, while the risk of graft migration with >30% oversizing remains unclear.

Similarly, in our case series, diameter oversizing by <10% was associated with a higher risk of type IA EL. In particular, less oversizing was associated with a higher risk of developing type IA EL. In our series, the five cases in which the endograft was undersized by <10% based on diameter occurred in the first part of our experience and were not standard practice; they were instead likely due to technical measurement errors. In contrast, when the measurements were performed using the area of the proximal neck instead of the diameter, oversizing by >20% was significantly related to the occurrence of type IA EL.

These findings lead us to question how endograft sizing is carried out using CTA images. In fact, the optimal method for endograft sizing has not been adequately validated. In most cases, the sizing is performed on a static CTA image. In some centers, however, electrocardiographically gated (dynamic) CTA can be executed to minimize cardiac-induced aortic wall motion and thus obtain more precise definition of the aortic neck. Iezzi et al.¹⁵

demonstrated significant variation of the proximal aortic neck diameter during the cardiac cycle, which can lead to inadequate endograft sizing in up to 18% of evaluated cases. Finally, some authors have argued that the diameter may not be the most appropriate tool for endograft sizing.

Buijs et al.¹⁶ assessed the degree of discrepancy between direct measurements of the aortic neck diameter and those obtained by a circumference-based method and then examined the association of this discrepancy with the development of type IA EL. They compared 12 patients with postoperative EL to 48 matched controls without EL and found that the diameters that were directly measured were smaller than those derived by the circumference, although the difference was not statistically significant and was not correlated with the occurrence of type IA EL. Therefore, the authors concluded that the proper method for endograft sizing is still a matter of debate. Tielliu et al.¹⁷ argued that the circumference-based method is better than the traditional method for endograft sizing, especially when the proximal neck does not have a circular shape or is irregular because of the presence of thrombi and calcifications.

Similarly, in our study, the area of the proximal neck that was directly measured was smaller than that obtained geometrically from the mean diameter (assuming a circular shape of the aortic neck), as if the measurement of the diameter somehow overestimated the real size of the aortic neck. These findings may justify the data regarding endograft oversizing with respect to the area of the proximal neck, which was significantly higher than the oversizing obtained using the diameter. From a geometrical point of view, this difference cannot be overlooked. Additionally, from a clinical point of view, this difference seems to translate into an increased risk of proximal EL. These findings underline how the proximal aortic neck is not "perfect"

and that a methodological error is likely to occur if we consider its cross section to be a circle.

Excluding cases in which an obvious sizing error has occurred (i.e., cases in which the diameter oversizing was <10%), we could argue that measurement of the diameter is probably not the best tool for endograft sizing based on the findings of our study. The area might be an effective alternative or adjunctive tool for calculation of graft oversizing, especially when the proximal neck has an irregular shape. In light of these assumptions, manufacturers of endoprostheses should give the measures of their graft not only according to the diameter of the proximal aortic neck, but also with reference to the area of the main body that best suits the area of the proximal neck.

Some centers employ endografts with suprarenal fixation to achieve a proper seal, with the idea of minimizing the risk of graft migration. Nevertheless, according to some authors, suprarenal fixation of the graft may be associated with more rapid dilatation of the proximal aortic neck with an increased risk of developing type IA EL.¹⁸ In our experience, however, suprarenal fixation did not seem to affect the occurrence of type IA EL during follow-up.

Our study has some limitations, the most important being its retrospective nature and small sample size. Moreover, the measurements were performed manually by two operators on static CTA images, which might have been impaired by the aortic wall motions during the cardiac cycle.

Conclusion

We noted a discrepancy between the measures of the diameter and area of the proximal neck when sizing the endograft, suggesting that the area might represent a more accurate measurement than the axial

diameter to optimize proximal sealing and lower the risk of developing type IA EL. Undersizing of the endograft diameter by <10% was significantly related to the occurrence of type IA EL. When the area was used for measurements, oversizing by >20% was strongly correlated with the occurrence of type IA EL.


Declaration of conflicting interest

The authors declare that there is no conflict of interest.

Funding

This research received no specific grant from any funding agency in the public, commercial, or not-for-profit sectors.

ORCID iD

Daniela Mazzaccaro  <https://orcid.org/0000-0002-7414-642X>

References

1. Chaikof EL, Dalman RL, Eskandari MK, et al. The Society for Vascular Surgery practice guidelines on the care of patients with an abdominal aortic aneurysm. *J Vasc Surg* 2018; 67: 2–77.e2.
2. Patel SR, Allen C, Grima MJ, et al. A systematic review of predictors of reintervention after EVAR: guidance for risk-stratified surveillance. *Vasc Endovascular Surg* 2017; 51: 417–428.
3. Hobo R and Buth J. Secondary interventions following endovascular abdominal aortic aneurysm repair using current endografts. A EUROSTAR report. *J Vasc Surg* 2006; 43: 896–902.
4. De Vries JP. The proximal neck: the remaining barrier to a complete EVAR world. *Semin Vasc Surg* 2012; 25: 182–186.
5. Mazzaccaro D, Nano G, Settembrini AM, et al. Open and endovascular elective treatment of abdominal aortic aneurysms: a real-world experience. *Surg Today* 2017; 47: 1347–1355.
6. Lederle FA, Freischlag JA, Kyriakides TC, et al. Long-term comparison of

- endovascular and open repair of abdominal aortic aneurysm. *N Engl J Med* 2012; 367: 1988–1997.
7. EVAR trial participants. Endovascular aneurysm repair versus open repair in patients with abdominal aortic aneurysm (EVAR trial 1): randomized controlled trial. *Lancet* 2005; 365: 2179–2186.
 8. Kouvelos GN, Oikonomou K, Antoniou GA, et al. A systematic review of proximal neck dilatation after endovascular repair for abdominal aortic aneurysm. *J Endovasc Ther* 2017; 24: 59–67.
 9. Wyss TR, Dick F, Brown LC, et al. The influence of thrombus, calcification, angulation, and tortuosity of attachment sites on the time to the first graft-related complication after endovascular aneurysm repair. *J Vasc Surg* 2011; 54: 965–971.
 10. Schanzer A, Messina LM, Ghosh K, et al. Follow-up compliance after endovascular abdominal aortic aneurysm repair in Medicare beneficiaries. *J Vasc Surg* 2015; 61: 16–22.e1.
 11. McFarland G, Tran K, Virgin-Downey W, et al. Infrarenal endovascular aneurysm repair with large device (34- to 36-mm) diameters is associated with higher risk of proximal fixation failure. *J Vasc Surg* 2019; 69: 385–393.
 12. Kaladji A, Lucas A, Kervio G, et al. Sizing for endovascular aneurysm repair: clinical evaluation of a new automated three-dimensional software. *Ann Vasc Surg* 2010; 24: 912–920.
 13. Wanhainen A, Verzini F, Van Herzele I, et al. Editor's choice - European Society for Vascular Surgery (ESVS) 2019 clinical practice guidelines on the management of abdominal aorto-iliac artery aneurysms. *Eur J Vasc Endovasc Surg* 2019; 57: 8–93.
 14. Van Prehn J, Schlosser FJ, Muhs BE, et al. Oversizing of aortic stent grafts for abdominal aneurysm repair: a systematic review of the benefits and risks. *Eur J Vasc Endovasc Surg* 2009; 38: 42–53.
 15. Iezzi R, Di Stasi C, Dattesi R, et al. Proximal aneurysmal neck: dynamic ECG-gated CT angiography/conformational pulsatile changes with possible consequences for endograft sizing. *Radiology* 2011; 260: 591–598.
 16. Buijs RV, Zeebregts CJ, Willems TP, et al. Endograft sizing for endovascular aortic repair and incidence of endoleak type 1A. *PLoS One* 2016; 11: e0158042.
 17. Tielliu IF, Buijs RV, Greuter MJ, et al. Circumference as an alternative for diameter measurement in endovascular aneurysm repair. *Med Hypotheses* 2015; 85: 230–233.