




ORIGINAL ARTICLE

BNT162b2 vaccine effectiveness in chronic kidney disease patients—an observational study

Dana Bielopolski ^{1,2}, Gilad Libresco³, Noam Barda ^{4,5,6}, Noa Dagan^{3,5,6,7}, Tali Steinmetz^{1,2}, Dafna Yahav ^{2,8}, David M. Charytan⁹, Ran D. Balicer^{3,7,10} and Benaya Rozen-Zvi^{1,2}

¹Department of Nephrology and Hypertension, Rabin Medical Center, Petah-Tikva, Israel, ²Sackler School of Medicine, Tel-Aviv University, Tel-Aviv, Israel, ³Clalit Research Institute, Innovation Division, Clalit Health Services, Tel Aviv, Israel, ⁴ARC Innovation Center, Sheba Medical Center, Ramat-Gan, Israel, ⁵Department of Software and Information Systems Engineering, Ben Gurion University, Be'er Sheva, Israel, ⁶Department of Biomedical Informatics, Harvard Medical School, Boston, MA, USA, ⁷Ivan and Francesca Berkowitz Family Living Laboratory Collaboration at Harvard Medical School and Clalit Research Institute, Ramat-Gan, Israel, ⁸Infectious Diseases Unit, Rabin Medical Center, Petah-Tikva, Israel, ⁹Nephrology Division, New York University Langone Medical Center and Grossman School of Medicine, New York, NY, USA and ¹⁰School of Public Health, Faculty of Health Sciences, Ben Gurion University of the Negev, Be'er Sheva, Israel

Correspondence to: Dana Bielopolski; E-mail: danabil@clalit.org.il

ABSTRACT

Background. Chronic kidney disease (CKD) is a risk factor for severe coronavirus disease 2019 (COVID-19). We aimed to evaluate the real-life effectiveness of the BNT162b2 messenger RNA vaccine for a range of outcomes in patients with CKD compared with matched controls.

Methods. Data from Israel's largest healthcare organization were retrospectively used. Vaccinated CKD [estimated glomerular filtration rate (eGFR) <60 ml/min/1.73 m²] and maintenance dialysis patients were matched to vaccinated controls without CKD (eGFR ≥60 ml/min/1.73 m²) according to demographic and clinical characteristics. Study outcomes included documented infection with severe acute respiratory syndrome coronavirus 2, symptomatic infection, COVID-19-related hospitalization, severe disease and death. Vaccine effectiveness was estimated as the risk ratio (RR) at days 7–28 following the second vaccine dose, using the Kaplan–Meier estimator. Effectiveness measures were also evaluated separately for various stages of CKD.

Results. There were 67 861 CKD patients not treated with dialysis, 2606 hemodialysis (HD) patients and 70 467 matched controls. The risk of severe disease [RR 1.84 [95% confidence interval (CI) 0.95–2.67]] and death [RR 2.00 (95% CI 0.99–5.20)] was increased in nondialysis CKD patients compared with controls without CKD following vaccination. For the subgroup of patients with eGFR <30 ml/min/1.73 m², the risk of severe disease and death was increased compared with controls [RR 6.42 (95% CI 1.85–17.51) and RR 8.81 (95% CI 1.63–13.81), respectively]. The risks for all study outcomes were increased in HD patients compared with controls.

Conclusion. Two doses of the BNT162b2 vaccine were found to be less efficient for patients with eGFR <30 ml/min/1.73 m². Risk in HD patients is increased for all outcomes. These results suggest prioritizing patients with eGFR <30 ml/min/1.73 m² for booster shots, pre- and post-exposure prophylaxis and early COVID-19 therapy.

Received: 22.3.2022; Editorial decision: 22.6.2022

© The Author(s) 2022. Published by Oxford University Press on behalf of the ERA. This is an Open Access article distributed under the terms of the Creative Commons Attribution-NonCommercial License (<https://creativecommons.org/licenses/by-nc/4.0/>), which permits non-commercial re-use, distribution, and reproduction in any medium, provided the original work is properly cited. For commercial re-use, please contact journals.permissions@oup.com

GRAPHICAL ABSTRACT



BNT162b2 vaccine effectiveness in chronic kidney disease patients – an observational study

Chronic kidney disease (CKD) is a risk factor for severe COVID-19. We aimed to evaluate real-life effectiveness of the BNT162b2 mRNA vaccine for a range of outcomes in patients with CKD compared to matched controls.

Methods

Observational study



COVID outcomes after 2nd vaccine dose



Study population:

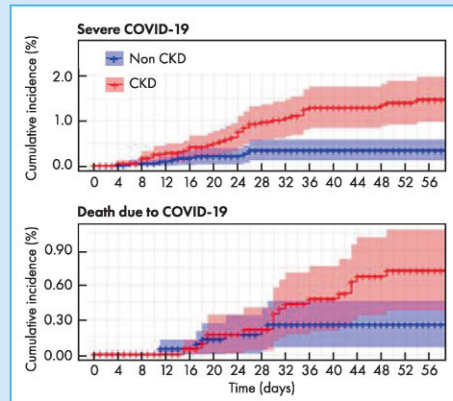


67 861 CKD patients not on dialysis



2606 dialysis patients
Matched controls

Results



Patients with CKD stages 4 and 5:

- Increased risk of severe COVID-19
- More hospital admissions
- Increased COVID-19 related mortality

Conclusion: Two doses of the BNT162b2 vaccine were found less efficient for patients with eGFR < 30ml/min/1.73 m² and hemodialysis patients.

Bielopolski, D.
Clinical Kidney Journal (2022)
dbielopols@rockefeller.edu
@CKJsocial

Keywords: BNT162b2 vaccine, chronic kidney disease, COVID-19

INTRODUCTION

Severe acute respiratory syndrome coronavirus 2 (SARS-CoV-2) emerged in December 2019 as the cause of coronavirus disease 2019 (COVID-19) [1]. Initial evidence suggested a higher incidence of severe COVID-19 in people with chronic illnesses, including chronic kidney disease (CKD) [2–4]. The incidence of severe COVID-19 in maintenance dialysis was even higher compared with nondialysis CKD (ndCKD) patients [5].

Various reports documented an attenuated response of CKD and dialysis patients to the BNT162b2 messenger RNA (mRNA) vaccine [6, 7]. Dialysis patients had reduced antibody response to the first and second doses of the mRNA vaccine BNT162b2 [8]. The majority (82%) of dialysis patients developed neutralizing antibodies and T-cell response after the second dose, but at significantly lower titers compared with healthy controls [8]. Furthermore, the humoral response was delayed by 3–4 weeks following the third (booster) dose [9]. However, these studies did not address clinical outcomes following the vaccine.

It has become a matter of great importance and urgency to identify the degree of protection afforded to people with kidney disease by two doses of SARS-CoV-2 mRNA vaccines, as it may affect decisions on additional vaccine doses or the use of other treatments and preventive measures [10, 11]. In this study we sought to evaluate the real-life effectiveness of BNT162b2 mRNA vaccine in a nationwide setting for a wide range of outcomes in CKD and dialysis patients compared with vaccinated individuals without kidney disease.

MATERIALS AND METHODS

Study population

Data from Clalit Health Services (CHS), the largest healthcare provider in Israel, were retrospectively analyzed. A detailed description of the data repositories used for data extraction is provided elsewhere [9].

Study design

We designed this observational study to estimate the risk of COVID-19 outcomes in CKD patients following two doses of BNT162b2 vaccine compared with the general vaccinated population. Eligibility criteria included age ≥ 18 years, vaccination with two doses of BNT162b2 according to the manufacturer's recommendations, not having a previously documented positive SARS-CoV-2 polymerase chain reaction (PCR) test and being a member of the healthcare organization during the previous 12 months. Vaccination status was validated using the strictly confirmed nationwide database. We excluded kidney transplant patients entirely from the analysis. In addition, we excluded patients for whom the probability of exposure was highly variable (e.g. healthcare workers or individuals for whom data on place of residence were missing).

For the ndCKD group, exposure was defined as two separate GFR estimations of <60 ml/min/1.73 m² at least 3 months apart in the 3 months prior to vaccination [12, 13]. Patients were further divided according to Kidney Disease: Improving Global Outcomes (KDIGO) estimated glomerular filtration rate (eGFR)-based CKD stages (3A: 45– <60 ml/min/1.73 m², 3B: 30– <45 ml/min/1.73 m² and 4 and 5: <30 ml/min/1.73 m²) [14]. Of note, due to the transient nature of patients with CKD stage 5, transitioning rapidly to either transplantation or dialysis, we decided to group them together with stage 4 patients, anticipating a small number of patients and events. Although albuminuria is frequently used to further divide CKD patients into subgroups, due to a lack of consistent evaluation of the albumin:creatinine ratio, we used only eGFR criteria for CKD evaluation. For the dialysis group, exposure was defined as dialysis treatment, either hemodialysis or peritoneal dialysis, for at least 3 months. For both comparisons, a control group from the general population was defined based on eGFR values >60 ml/min/1.73 m².

We matched all newly vaccinated CKD and dialysis patients in a 1:1 ratio with vaccinated controls without kidney disease. The matching process was based on variables associated with the probability of CKD, risk of COVID-19 infection and the risk of COVID-19-related severe illness and mortality. These variables included age (in groups of 5 years), sex, place of residence by neighborhood, receipt of influenza vaccination during the preceding 5 years (either yes or no, as a proxy of health-seeking behavior) and groups of the number of coexisting medical conditions (0–1, 2–3, ≥ 4) that had been identified by the Centers for Disease Control and Prevention (CDC) as risk factors for severe disease and were used in previous publications for risk evaluation [15].

Outcomes of the study included five different endpoints associated with COVID-19: documented infection (only cases confirmed by a positive PCR test), symptomatic infection, hospitalization, severe disease (as defined by the National Institutes of Health criteria) [16] and death.

Statistical analysis

Following matching, survival curves were estimated using the Kaplan–Meier method. Risk ratios (RRs) were evaluated using the same estimator for the period of 7–28 days following the second vaccine dose. This was done by including only pairs in which both matched persons were still at risk 7 days after the second vaccine. We estimated 95% confidence intervals with the percentile bootstrap method using 3000 repetitions. Analyses were performed with the use of R software (R Foundation for Statistical Computing, Vienna, Austria).

Ethics

This study was approved by the CHS institutional review board (Helsinki no. 0052-20-COM2, 13 May, 2020) and, due to its non-interventional and observative nature, was exempt from the obligation for informed patients consent. Reporting was carried out in line with the Strengthening the Reporting of Observational Studies in Epidemiology guidelines [17]; the full list appears in Supplementary Table S1.

RESULTS

Overall, 3 247 611 people ≥ 18 years of age were insured by CHS at the beginning of the study period and 2 203 686 of them met the inclusion criteria. A total of 70 467 individuals had impaired kidney function with available matched preserved kidney

function controls. Of these, 67 861 had ndCKD and 2606 were dialysis patients (Fig. 1). The median age for CKD was 76 years [interquartile range (IQR) 71–83] and 48% were males. The mean eGFR for CKD patients was 44.76 ± 11 ml/min/1.73 m² compared with 74.01 ± 14 ml/min/1.73 m² in the control group. Of the study group, 37 428 (55%) had CKD stage 3A, 22 341 (33%) had CKD stage 3B and 8092 (12%) had CKD stage 4 or 5. The median age among the dialysis group was 71 years (IQR 63–77). The characteristics of the study groups and the control groups are presented in Table 1.

We calculated the risk ratio (RR) of patients with ndCKD versus controls for COVID-19 infection [RR 0.98 (95% CI 0.76–1.30)], symptomatic COVID-19 infection [RR 0.96 (95% CI 0.68–1.34)], COVID-19-related hospital admission [RR 1.34 (95% CI 0.81–2.33)], severe COVID-19 [RR 1.84 (95% CI 0.95–2.67)] and COVID-19-related death [RR 2.0 (95% CI 0.99–5.2)] (Table 2).

Outcomes according to CKD stage

A total of 26% of the patients in stage 3A had a CDC risk score of ≥ 4 , compared with 44% of the patients in stage 3B and 61% of the patients in stage 4 and 5. This difference was largely due to a higher prevalence of diabetes mellitus and heart disease with more severe CKD (Supplementary Table S2).

Patients with CKD stages 3A and 3B had similar risks for all outcomes compared with those without CKD (Fig. 2, Supplementary Fig. S2 and Table S2). Patients with stage 4 and 5 ndCKD had increased risk of COVID-19-related hospital admissions [RR 2.98 (95% CI 0.96–12.74)], severe COVID-19 [RR 6.48 (95% CI 1.85–17.51)], and COVID-19 related mortality [RR 8.81 (95% CI 1.63–13.81)] compared with vaccinated matched controls without CKD. The results of CKD patients according to CKD stages are presented in Fig. 2, Supplementary Fig. S1 and Table S2. The summary results for all CKD patients (with all stages collapsed) compared with controls without CKD are presented in Fig. 4 and Supplementary Fig. 2.

Outcomes in dialysis patients

Baseline characteristics of dialysis patients and matched controls are presented in Table 1. Risk for COVID-19 infection and symptomatic disease was higher for dialysis patients compared with controls [RR 3.75 (95% CI 1.5–15.20), and RR 3.88 (95% CI 2.35–8.03) respectively]. In the dialysis group there were 10 events of COVID-19-related hospital admissions, 8 events of severe COVID-19 and 5 events of COVID-19-related deaths compared with no events for these outcomes in the control group (Fig. 3).

DISCUSSION

We evaluated the effectiveness of two doses of BNT162b2 vaccine in a nationwide cohort of 67 861 people with ndCKD and 2606 dialysis patients compared with vaccinated matched controls without CKD. The risk of severe disease [RR 1.84 (95% CI 0.95–2.67)] and COVID-19-related death [RR 2 (95% CI 0.99–5.20)] for ndCKD were increased compared with matched controls. However, this presentation blunts the heterogeneity of outcomes in CKD patients. Subgrouping according to the different stages of CKD revealed two different groups of patients. Among patients with ndCKD stage 4–5 (eGFR <30 ml/min/1.73 m²), the risks of severe COVID-19 infection and death were higher compared with controls (RRs of 6.48 and 8.8, respectively). In contrast, outcomes were similar in individuals with stage 3 CKD compared with controls without CKD.

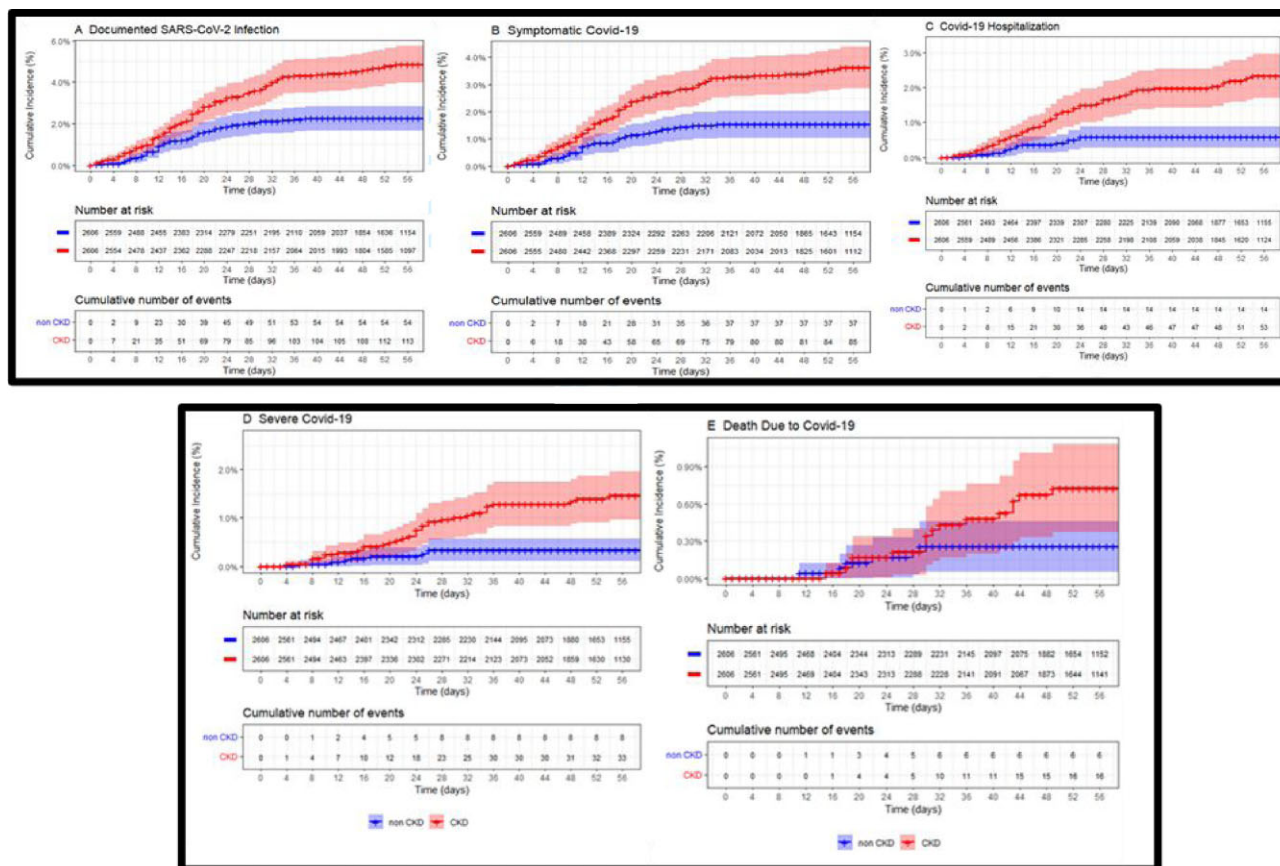


FIGURE 1: Population flow chart describing data cleaning steps of the cohort. From an initial cohort of 3247 611 individuals >18 years of age who were insured by Clalit Health Services at the beginning of follow-up, the final cohort included 135 722 CKD nondialysis patients and 5212 dialysis patients.

Dialysis patients exhibited uniformly increased vulnerability with qualitatively increased risks compared with controls for all outcomes. Although the number of events was small, risks of documented, symptomatic and severe infection, as well as hospitalization and death rates were numerically higher for dialysis patients compared with matched controls. Our finding of a threshold of eGFR <30 ml/min/1.73 m² as a risk factor for severe disease and death among CKD patients differs from the frequently used cutoff for risk exposure of <60 ml/min/1.73 m² [13] and suggest that the severity of CKD and not just its presence or absence is a critical determinant of risk.

One explanation for the increased risk in dialysis and CKD stage 4–5 patients may be diminished immunogenicity in response to vaccination as GFR declines. The literature regarding clinical response of CKD patients to the SARS-CoV-2 vaccine is scarce. Inclusion of patients with kidney disease in completed and ongoing COVID-19 vaccine studies remains low, with most trials explicitly excluding individuals with ‘severe’ or ‘chronic’ kidney disease.

Indications of reduced effectiveness of the SARS-CoV-2 vaccine came from studies measuring serologic response following COVID-19 infection in dialysis patients. The immunoglobulin G (IgG) level decreased gradually within 3 months following COVID infection, and such serologic changes might predict less efficacy of vaccination [18]. Antibody titer was also lower among dialysis patients compared with healthy controls [19, 20]. Seroconversion rates induced by mRNA-1273 compared with BNT162b2

vaccine were 97% and 88%, respectively, in dialysis patients and specific IgG directed against the spike protein were significantly higher in dialysis patients vaccinated by mRNA-1273 (95%) compared with BNT162b2 [21, 22]. Vaccine efficacy may be hampered by alteration of innate immunity in the uremic milieu, older age and deficiency of vitamin D and erythropoietin [23]. The uremic milieu, for example, reduces expression of costimulatory molecules such as CD80/CD86 on antigen-presenting cells and dendritic cells, reducing recognition of pathogen by the immune systems of CKD patients [24]. In addition, expression of the Toll-like receptor is decreased on monocytes and hence proinflammatory cytokine release is reduced in CKD [25]. These conditions also decrease antibody production by B lymphocytes and increase apoptosis of memory T cells [23, 26]. In fact, patients can exhibit lymphopenia and defects in B cell differentiation, therefore the generation of antibodies might be influenced [27, 28]. The efficacy of the influenza vaccine, for example, was negatively associated with age and CKD status [29]. Other factors that might influence vaccine efficacy in dialysis patients are erythropoietin titer [30] and low vitamin D, which were associated with lower seroconversion rates in the case of hepatitis B virus vaccine [31]. Additionally, it is possible that dialysis patients might experience near-continuous and inevitable exposure to COVID-19 during regular visits to the dialysis unit. This might have contributed, at least in part, to the increased infection rate in this population.

To summarize, two doses of BNT162b2 mRNA vaccine appear to be less effective in preventing severe infection, admissions

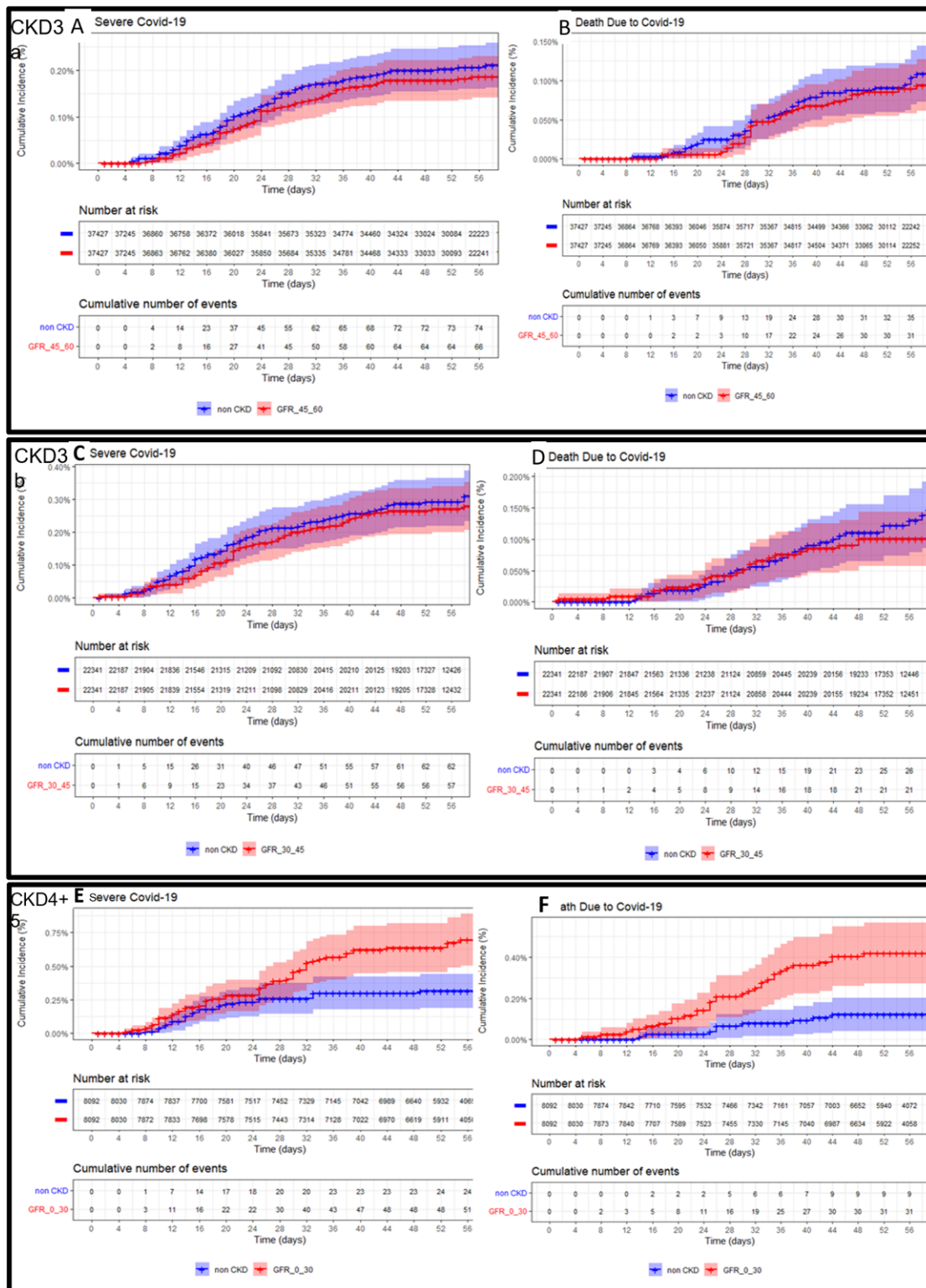


FIGURE 2: Cumulative incidence of severe infection and death related to COVID-19 in ndCKD patients according to CKD stage. Patients (red) were grouped according to eGFR and are shown compared with matched controls (blue). (A, B) Patients with CKD3A (eGFR 45 to <60 ml/min/1.73 m²), (C, D) CKD 3B (eGFR 30–<45 ml/min/1.73 m²), (E, F) patients with CKD 4–5 (eGFR 0–<30 ml/min/1.73 m²). (A, C, E) severe COVID-19 infection, (B, D, F) death related to COVID-19.

Table 1. Characteristics of CKD patients and matched controls

Parameter		CKD patients	Controls	Dialysis patients	Controls	
N		67 861	67 861	2606	2606	
Age (years), median, (IQR)		76 (71–83)	77 (71–83)	71 (63–77)	71 (63–77)	
Female, n (%)		35 485 (52)	35 485 (52)	1032 (40)	1032 (40)	
Influenza vaccine in the past 5 years (yes), n (%)		66 343 (98)	66 342 (98)	2524 (97)	2524 (97)	
CDC 'certain' risk criteria, n (%)	Cancer	3854 (5.7)	4224 (6.2)	223 (8.6)	154 (5.9)	
	COPD	6757 (10.0)	5404 (8.0)	401 (15)	376 (14)	
	Heart disease	21 450 (32)	25 167 (37)	1115 (43)	1494 (57)	
	Immunosuppression	277 (0.4)	176 (0.3)	18 (0.6)	16 (0.6)	
	Obesity (BMI 30–40)	19 677 (29)	17 650 (26)	1050 (40)	723 (28)	
	Morbid obesity (BMI ≥40)	2115 (3.1)	2343 (3.5)	156 (6.0)	105 (4.0)	
	Smoking	6770 (10.0)	5854 (8.6)	399 (15)	358 (14)	
	Type 2 diabetes mellitus	27 876 (41)	30 672 (45)	1463 (56)	1480 (57)	
	CDC 'possible' risk criteria, n (%)	Asthma	7258 (11)	5051 (7.4)	441 (17)	215 (8.3)
		Cerebrovascular disease	11 205 (17)	10 895 (16)	591 (23)	636 (24)
		Other respiratory disease	1188 (1.8)	917 (1.4)	57 (2.2)	44 (1.7)
		Hypertension	47 293 (70)	52 776 (78)	1961 (75)	2309 (89)
		Immunosuppression (other)	3145 (4.6)	2893 (4.3)	204 (7.8)	169 (6.5)
Neurologic disease		12 421 (18)	9938 (15)	509 (20)	326 (13)	
Liver disease		3309 (4.9)	2993 (4.4)	226 (8.7)	222 (8.5)	
Overweight (BMI 25–30)		26 616 (39)	28 686 (42)	865 (33)	940 (36)	
Thalassemia		453 (0.7)	326 (0.5)	29 (1.1)	33 (1.3)	
Type 1 diabetes mellitus		744 (1.1)	1246 (1.8)	62 (2.4)	169 (6.5)	

COPD, chronic obstructive pulmonary disease; BMI, body mass index; CDC, Centers for Disease Control.

Table 2. Analysis in CKD subgroups

Patients' subgroup	COVID-19-related events	CKD, n	Control, n	RR (95% CI)
All CKD eGFR <60 ml/min/1.73 m ² (N = 67 861)	Documented Infections	126	128	0.98 (0.76–1.30)
	Symptomatic infections	80	81	0.96 (0.68–1.34)
	Severe infections	43	26	1.84 (0.95–2.67)
	Admissions	41	34	1.34 (0.81–2.33)
	COVID-19-related death	21	14	2.00 (0.99–5.20)
CKD 3A eGFR 45–<60 ml/min/1.73 m ² (N = 37 428)	Documented Infections	56	60	0.98 (0.61–1.56)
	Symptomatic infections	34	38	0.82 (0.47–1.39)
	Severe infections	14	9	1.43 (0.57–4.31)
	Admissions	16	12	0.86 (0.34–2.87)
	COVID-19-related death	9	5	1.41 (0.45–7.35)
CKD 3B eGFR 30–<45 ml/min/1.73 m ² (N = 22 341)	Documented Infections	49	52	0.96 (0.63–1.42)
	Symptomatic infections	30	35	0.87 (0.51–1.42)
	Severe infections	14	15	0.89 (0.39–1.88)
	Admissions	15	18	0.83 (0.39–1.75)
	COVID-19-related death	3	8	0.31 (0–1.05)
CKD 4–5 eGFR 0–<30 ml/min/1.73 m ² (N = 8092)	Documented Infections	21	16	1.19 (0.60–2.53)
	Symptomatic infections	16	8	1.84 (0.74–5.68)
	Severe infections	15	2	6.42 (1.85–17.51)
	Admissions	10	4	2.98 (0.96–12.74)
	COVID-19-related death	9	1	8.81 (1.63–13.81)

RR, risk ratio.

CKD patients were divided according to stages as defined by KDIGO criteria. RRs were evaluated using the same estimator for the period 7–28 days following the second vaccine dose.

and death at an eGFR <30 ml/min/1.73 m². Furthermore, the vaccine is less effective for all outcomes assessed in patients requiring dialysis.

Thus more data are needed to inform providers and patients with CKD regarding the use of COVID-19 vaccines [32] and it is of great importance to include these patients in clinical trials examining the efficacy of future treatments. With the emergence of booster shot campaigns and the appearance of new SARS-CoV-2 strains, further research is needed to assess the efficacy of the vaccine in these situations. Our data suggest that indi-

viduals with eGFR <30 ml/min/1.73 m² should be prioritized for additional vaccine doses, with further research evaluating the optimal type of vaccine and number of doses in this population. Moreover, patients with CKD should not be excluded from trials assessing pre- and postexposure prophylaxis measures or testing treatments for breakthrough infection.

Our study has several limitations. Due to the time-sensitive effectiveness of the vaccine and changes in common viral strains with time, the results represent the vaccine effectiveness as of February 2021, during a time when the Alpha variant was

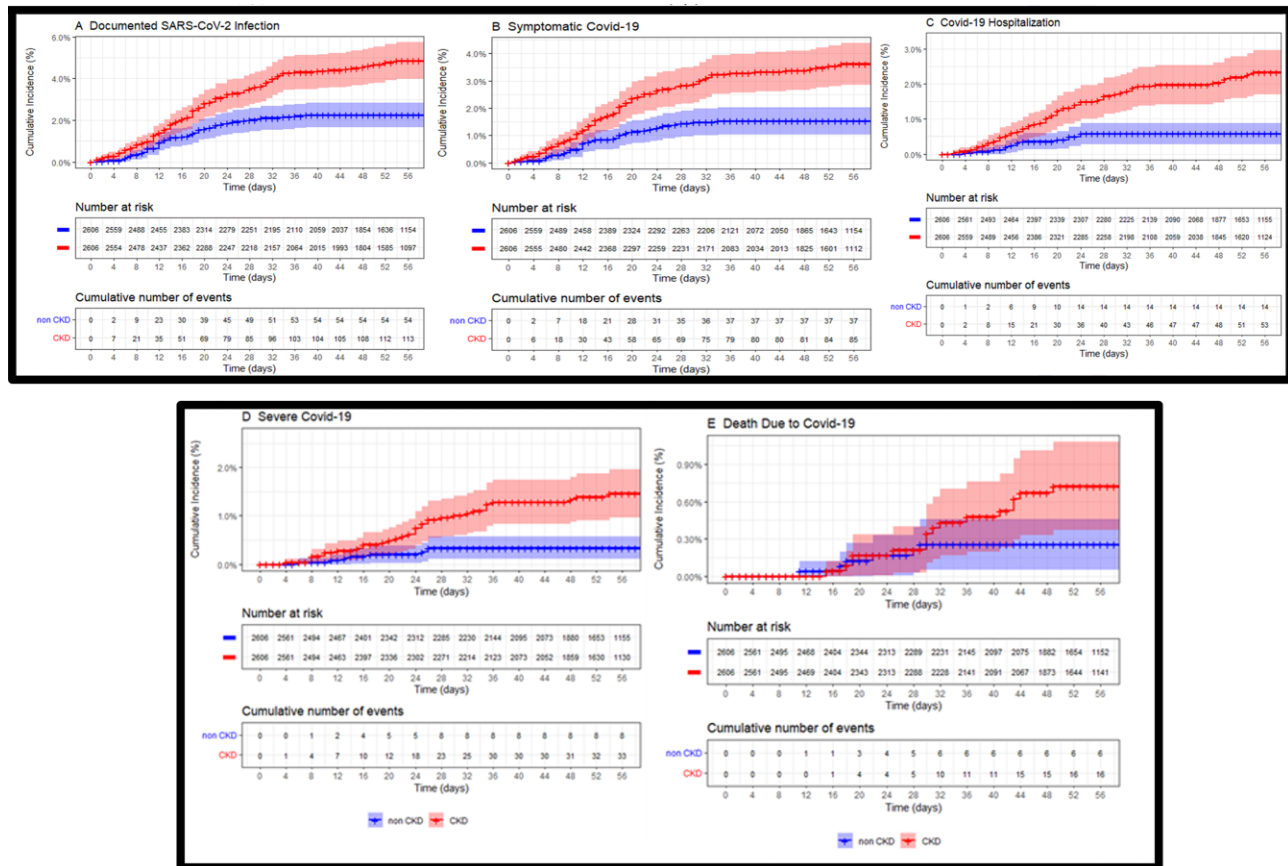


FIGURE 3: COVID-19-related outcomes in dialysis patients following vaccination compared with matched controls. Results depict dialysis patients in red versus controls in blue; on the y-axis, cumulative incidence (%) of the specific outcome versus time (days). (A) documented infection rates, (B) symptomatic infection rates, (C) hospitalization rates, (D) severe infection and (E) death due to COVID.

active in Israel. Further studies are needed to understand how the use of booster doses or the presence of new viral variants might modify vaccine effectiveness. Additionally, the number of patients on dialysis was small. Furthermore, we studied only a single vaccine type. Since only the BNT162b2 mRNA vaccine was utilized in the study, we are unable to assess whether our findings are specific to that particular vaccine or broadly representative of the clinical effectiveness of mRNA vaccines for COVID-19. To wit, at least one analysis has shown that immunologic response to mRNA-1273 vaccine is more robust than response to the BNT162b2 in the setting of dialysis [20, 33]. We acknowledge that due to the small number of events our confidence intervals are quite large and this can result in overestimation.

Finally, we could not match dialysis patients' exposure to the general population. Since dialysis patients receive treatment three times a week in a setting mandating social interaction, their risk is a combination of biological and social factors that cannot be matched with the general population. That being said, we believe their increased risk is a combination of frequent exposure and decreased ability to develop immunity. Lastly, due to the transient nature of stage 5 ndCKD patients, transitioning rapidly to either dialysis or transplantation, we had a relatively small number of patients and events in this group and hence were unable to assess the specific risk.

In conclusion, after two doses of BNT162b2, patients with advanced CKD and dialysis are less protected against COVID-19

infection and complications compared with a matched population with normal renal function. Additional measures might be considered to improve the protection of CKD patients, including additional vaccine doses (either same or heterologous), pre- and postexposure prophylaxis and therapies for COVID-19. Inclusion of these patients in clinical trials should be encouraged, despite limitations in dosing adjustment.

SUPPLEMENTARY DATA

Supplementary data are available at [ckj](#) online.

FUNDING

No funding has been received for the preparation of this article.

AUTHORS' CONTRIBUTIONS

D.B. was responsible for conceptualization, data curation, investigation, methodology, visualization, writing the original draft and review and editing. G.L. was responsible for data curation, formal analysis, investigation, software, validation and review and editing. N.B. was responsible for conceptualization, data curation, investigation, methodology, software, supervision and review and editing. N.D. was responsible for investigation,

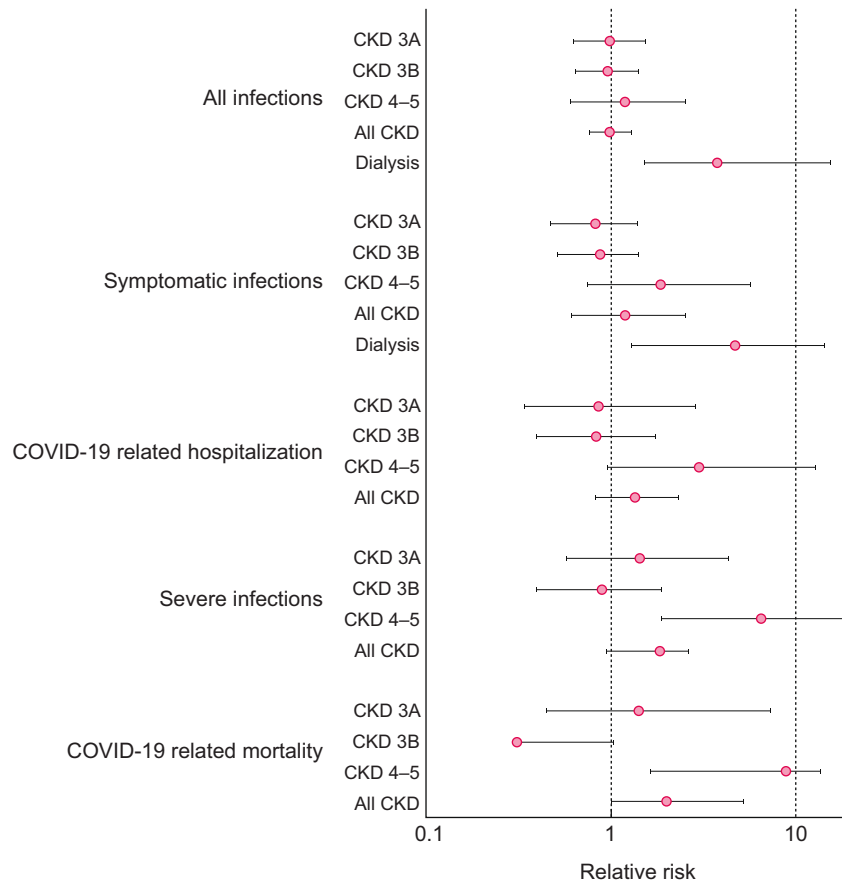


FIGURE 4: Relative risk of the various outcomes according to different stages of CKD. Patients were divided according to KDIGO eGFR based CKD stages (3A: 45 to <60 ml/min/1.73 m², 3B: 30 to <45 ml/min/1.73 m² and 4 and 5: below 30 ml/min/1.73 m²).

methodology, supervision and review and editing. T.S. was responsible for conceptualization, methodology and review and editing. D.Y. was responsible for methodology, supervision and review and editing. D.M.C. was responsible for investigation, methodology, supervision and review and editing. R.B. was responsible for methodology, resources, supervision and review and editing. B.R.Z. was responsible for conceptualization, investigation, methodology, supervision, writing the original draft and review and editing.

DATA AVAILABILITY STATEMENT

Owing to data privacy regulations, the raw data for this study cannot be shared.

CONFLICT OF INTEREST STATEMENT

D.M.C. has received personal fees or fees paid by Janssen Pharmaceuticals to the Baim Institute; consulting fees from Amgen, Eli Lilly, Fresenius, CSL Behring, Gilead, Medtronic/Covidien, Merck, Novo Nordisk, Zoll, AstraZeneca, Merck, PLC Medical and Allena Pharmaceuticals and research support from Medtronic and Amgen. B.R.Z. has received consultation fee from Fresenius, Novartis and Sanofi and speaker fees from AstraZeneca. G.L., N.D. and R.B. report institutional grants to the Clalit Research Institute from Pfizer outside the submitted work and unrelated to

COVID-19, with no direct or indirect personal benefits. The other authors have no conflicts of interest

REFERENCES

1. World Health Organization. WHO Coronavirus (COVID-19) dashboard. <https://covid19.who.int/> (30 December 2021, date last accessed).
2. Yende S, Parikh CR. Long COVID and kidney disease. *Nat Rev Nephrol* 2021;17:792–3. <https://doi.org/10.1038/s41581-021-00487-3>
3. Gibertoni D, Reno C, Rucci P et al. COVID-19 incidence and mortality in non-dialysis chronic kidney disease patients. *PLoS One* 2021;16:e0254525. <https://doi.org/10.1371/journal.pone.0254525>
4. Wetmore JB. Understanding the burden of the COVID-19 pandemic for people with kidney disease. *Am J Kidney Dis* 2021;78:777–9. <https://doi.org/10.1053/j.ajkd.2021.08.006>
5. Weinhandl ED, Wetmore JB, Peng Y et al. Initial effects of COVID-19 on patients with ESKD. *J Am Soc Nephrol* 2021;32:1444–53. <https://doi.org/10.1681/ASN.2021010009>
6. Noordzij M, Duivenvoorden R, Pena MJ et al. ERACODA: the European database collecting clinical information of patients on kidney replacement therapy with COVID-19. *Nephrol Dial Transplant* 2020;35:2023–25. <https://doi.org/10.1093/ndt/gfaa179>

7. Hsu CM, Weiner DE, Aweh G et al. COVID-19 among US dialysis patients: risk factors and outcomes from a national dialysis provider. *Am J Kidney Dis* 2021;77:748–756. E1. <https://doi.org/10.1053/j.ajkd.2021.01.003>
8. Bertrand D, Hamzaoui M, Lemée V et al. Antibody and T cell response to SARS-CoV-2 messenger RNA BNT162b2 vaccine in kidney transplant recipients and hemodialysis patients. *J Am Soc Nephrol* 2021;32:2147–52. <https://doi.org/10.1681/ASN.2021040480>
9. Dagan N, Barda N, Kepten E et al. BNT162b2 mRNA covid-19 vaccine in a nationwide mass vaccination setting. *N Engl J Med* 2021;384:1412–23. <https://doi.org/10.1056/NEJMoa2101765>
10. Young B, Tan TT, Leo YS. The place for remdesivir in COVID-19 treatment. *Lancet Infect Dis* 2021;21:20–1. [https://doi.org/10.1016/S1473-3099\(20\)30911-7](https://doi.org/10.1016/S1473-3099(20)30911-7)
11. U.S. Food and Drug Administration. Coronavirus (COVID-19) Update: FDA authorizes first oral antiviral for treatment of COVID-19. <https://www.fda.gov/news-events/press-announcements/coronavirus-covid-19-update-fda-authorizes-first-oral-antiviral-treatment-covid-19> (4 January 2022, date last accessed)
12. Chang AR, George J, Levey AS et al. Performance of glomerular filtration rate estimating equations before and after bariatric surgery. *Kidney Med* 2020;2:699–706. E1. <https://doi.org/10.1016/j.xkme.2020.08.008>
13. Kidney Disease: Improving Global Outcomes. CKD Evaluation and Management. <https://kdigo.org/guidelines/ckd-evaluation-and-management/>. (13 November 2020, date last accessed)
14. Isakova T, Nickolas TL, Denburg M et al. KDOQI US commentary on the 2017 KDIGO clinical practice guideline update for the diagnosis, evaluation, prevention, and treatment of chronic kidney disease–mineral and bone disorder (CKD-MBD). *Am J Kidney Dis* 2017;70:737–51. <https://doi.org/10.1053/j.ajkd.2017.07.019>
15. Centers for Disease Control and Prevention. People with Certain Medical Conditions. <https://www.cdc.gov/coronavirus/2019-ncov/need-extra-precautions/people-with-medical-conditions.html>. (21 November 2021, date last accessed)
16. National Institutes of Health. COVID-19 Treatment Guidelines. <https://www.covid19treatmentguidelines.nih.gov/>. (31 December 2021, date last accessed)
17. Von Elm E, Altman DG, Egger M et al. The Strengthening the Reporting of Observational Studies in Epidemiology (STROBE) statement: guidelines for reporting observational studies. *J Clin Epidemiol* 2008;61:344–9. <https://doi.org/10.1016/j.jclinepi.2007.11.008>
18. Labriola L, Scohy A, Seghers F et al. A longitudinal, 3-month serologic assessment of SARS-CoV-2 infections in a Belgian hemodialysis facility. *Clin J Am Soc Nephrol* 2021;16:613–4. <https://doi.org/10.2215/CJN.12490720>
19. Danthu C, Hantz S, Dahlem A et al. Humoral response after SARS-CoV-2 mRNA vaccination in a cohort of hemodialysis patients and kidney transplant recipients. *J Am Soc Nephrol* 2021;32:2153–8. <https://doi.org/10.1681/ASN.2021040490>
20. Grupper A, Sharon N, Finn T et al. Humoral response to the Pfizer BNT162b2 vaccine in patients undergoing maintenance hemodialysis. *Clin J Am Soc Nephrol* 2021;16:1037–42. <https://doi.org/10.2215/CJN.03500321>
21. Stumpf J, Siepmann T, Lindner T et al. Humoral and cellular immunity to SARS-CoV-2 vaccination in renal transplant versus dialysis patients: a prospective, multicenter observational study using mRNA-1273 or BNT162b2 mRNA vaccine. *Lancet Reg Health Eur* 2021;9:100178. <https://doi.org/10.1016/j.lanepe.2021.100178>
22. Yanay NB, Freiman S, Shapira M et al. Experience with SARS-CoV-2 BNT162b2 mRNA vaccine in dialysis patients. *Kidney Int* 2021;99:1496–8. <https://doi.org/10.1016/j.kint.2021.04.006>
23. Syed-Ahmed M, Narayanan M. Immune dysfunction and risk of infection in chronic kidney disease. *Adv Chronic Kidney Dis* 2019;26:8–15. <https://doi.org/10.1053/j.ackd.2019.01.004>
24. Girndt M, Sester M, Sester U et al. Defective expression of B7-2 (CD86) on monocytes of dialysis patients correlates to the uremia-associated immune defect. *Kidney Int* 2001;59:1382–9. <https://doi.org/10.1046/j.1523-1755.2001.0590041382.x>
25. Ando M, Shibuya A, Tsuchiya K. et al. Reduced expression of Toll-like receptor 4 contributes to impaired cytokine response of monocytes in uremic patients. *Kidney Int* 2006;70:358–62. <https://doi.org/10.1038/sj.ki.5001548>
26. Eleftheriadis T, Antoniadi G, Liakopoulos V et al. Disturbances of acquired immunity in hemodialysis patients. *Semin Dial* 2007;20:440–51. <https://doi.org/10.1111/j.1525-139X.2007.00283.x>
27. Pahl MV, Gollapudi S, Sepassi L et al. Effect of end-stage renal disease on B-lymphocyte subpopulations, IL-7, BAFF and BAFF receptor expression. *Nephrol Dial Transplant* 2010;25:205–12. <https://doi.org/10.1093/ndt/gfp397>
28. Kim KW, Chung BH, Jeon EJ et al. B cell-associated immune profiles in patients with end-stage renal disease (ESRD). *Exp Mol Med* 2012;44:465–72. <https://doi.org/10.3858/emm.2012.44.8.053>
29. Frasca D, Diaz A, Romero M et al. Young and elderly patients with type 2 diabetes have optimal B cell responses to the seasonal influenza vaccine. *Vaccine* 2013;31:3603–10. <https://doi.org/10.1016/j.vaccine.2013.05.003>
30. Liu JH, Liu YL, Lin HH et al. Intravenous iron attenuates post-vaccination anti-HBsAg titres after quadruple hepatitis B vaccination in dialysis patients with erythropoietin therapy. *Int J Clin Pract* 2009;63:387–93. <https://doi.org/10.1111/j.1742-1241.2008.01732.x>
31. Zitt E, Sprenger-Mähr H, Knoll F et al. Vitamin D deficiency is associated with poor response to active hepatitis B immunisation in patients with chronic kidney disease. *Vaccine* 2012;30:931–5. <https://doi.org/10.1016/j.vaccine.2011.11.086>
32. Kant S, Menez SP, Hanouneh M et al. The COVID-19 nephrology compendium: AKI, CKD, ESKD and transplantation. *BMC Nephrol* 2020;21:449. <https://doi.org/10.1186/s12882-020-02112-0>
33. Speer C, Göth D, Benning L et al. Early humoral responses of hemodialysis patients after COVID-19 vaccination with BNT162b2. *Clin J Am Soc Nephrol* 2021;16:1073–82. <https://doi.org/10.2215/CJN.03700321>