

RESEARCH ARTICLE

The effect of red/blue color stimuli on temporal perception under different pupillary responses induced by different equiluminant methods

Yuya Kinzuka¹, Fumiaki Sato¹, Tetsuto Minami^{1,2*}, Shigeki Nakauchi¹

1 Department of Computer Science and Engineering, Toyohashi University of Technology, Toyohashi, Aichi, Japan, **2** Electronics-Inspired Interdisciplinary Research Institute, Toyohashi University of Technology, Toyohashi, Aichi, Japan

* minami@tut.jp

Abstract

As time plays a fundamental role in our social activities, scholars have studied temporal perception since the earliest days of experimental psychology. Since the 1960s, the ubiquity of color has been driving research on the potential effects of the colors red and blue on temporal perception and on its underlying mechanism. However, the results have been inconsistent, which could be attributed to the difficulty of controlling physical properties such as hue and luminance within and between studies. Therefore, we conducted a two-interval duration-discrimination task to evaluate the perceived duration of color stimuli under different equiluminant conditions: subjective or pupillary light reflex (PLR)-based equiluminance. The results, based on psychometric functional analyses and simultaneous pupillary recordings, showed that the perceived duration of red was overestimated compared with blue even when the intensity of the stimulus was controlled based on subjective equiluminance (Experiment 1). However, since blue is known to induce a larger PLR than red despite equiluminance, we conducted a controlled study to distinguish the indirect effect of pupillary response to temporal perception. Interestingly, the effect observed in Experiment 1 faded when the luminance levels of the two stimuli were matched based on PLR response (Experiment 2). These results indicate that duration judgement can be affected not only by the hue but also by different equiluminance methods. Furthermore, this causality between the equiluminance method and temporal perception can be explained by the fluctuations in incident light entering the pupil.

OPEN ACCESS

Citation: Kinzuka Y, Sato F, Minami T, Nakauchi S (2022) The effect of red/blue color stimuli on temporal perception under different pupillary responses induced by different equiluminant methods. *PLoS ONE* 17(6): e0270110. <https://doi.org/10.1371/journal.pone.0270110>

Editor: Sebastiaan Mathôt, Groningen University, NETHERLANDS

Received: September 27, 2021

Accepted: June 3, 2022

Published: June 21, 2022

Copyright: © 2022 Kinzuka et al. This is an open access article distributed under the terms of the [Creative Commons Attribution License](https://creativecommons.org/licenses/by/4.0/), which permits unrestricted use, distribution, and reproduction in any medium, provided the original author and source are credited.

Data Availability Statement: All dataset generated during this study are included in this article and analyzed data are available from the Open Science Framework repository. (<https://osf.io/sk8bm/>).

Funding: This work was supported by Grants-in-Aid for Scientific Research from the Japan Society for the Promotion of Science by T.M. (grant number: 20H04273) and Y.K. (grant number: 21J12728). The funders had no role in study design, data collection and analysis, decision to

Introduction

As color is indispensable to individuals' perceptual experiences of the world, its effect has been the subject of research since the early history of psychology. Studies show that colors surrounding us in our daily lives profoundly affect bodily functions, including mood and behavior [1, 2]. The potential effect of color on our bodily functions has been extensively discussed

publish, or preparation of the manuscript.”, after amendments in the acknowledgment section.

Competing interests: The authors have declared that no competing interests exist.

after Hill and Barton reported that competitors wearing red clothing or body protection had a significantly higher chance of winning the 2004 Olympic Games in Athens [3]. They explained that this is because the vividness of the red color increases the amount of testosterone they have in their bodies, which also correlates with physical health, leading to a psychological advantage.

Although that study prompted much controversy, people have cognitive associations with specific colors. For instance, long-wavelength colors such as red are often considered dangerous and compelling, whereas short-wavelength colors such as blue are perceived as relaxing. Furthermore, red explicitly captures our attention and is associated with biological danger [4, 5], whereas blue is often considered to evoke the opposite response. Numerous researchers have discussed the psychological effects of colors, with most studies explicitly focused on red and blue, as these are two of the three primary colors located at each end of the visible-light region. Assumptions on red-inducing arousal have also been extensively investigated via physiological measures such as electroencephalography (EEG) [6], galvanic skin response [7], and heart rate variability [8]. Moreover, since color emerges in physiological indices, it is known to affect human behavior, such as cognitive performance. Furthermore, red may enhance task performance, unlike blue [9, 10]. The influence of color on cognition and behavior is typically a learned association, which occurs when different colors are accompanied by specific experiences or concepts (*e.g.*, red is often associated with danger, such as stop signs and warnings) [11]. Therefore, varied associations involving red and blue can induce alternative bodily functions; red induces arousal, while blue is relaxing.

Unsurprisingly, the growing interest in colors' psychological effects on cognitive functions includes the pursuit of their effect on temporal perception was no exception. We also know from experience that perceptual time is not isomorphic to physical time, and our subjective experience of the passage of time is significantly influenced by non-temporal aspects, such as emotions, experiences, and our internal states. The fundamental role of time in social activities has led to temporal perception studies since the earliest days of experimental psychology [12, 13]. Psychophysical and behavioral techniques help demonstrate how non-temporal cognitive information modulates the subjective perception of time to reveal the underlying mechanism of temporal perception. Many studies have been conducted using stimuli with different visual sensory inputs to investigate how the apparent duration of a specific time interval is influenced by lower-order characteristics and by color. Since the 1960s, the potential effects of red and blue on temporal perception have been studied to determine the fundamental mechanism. [Table 1](#) summarizes the methods and results of several temporal perception studies concerning color.

[Table 1](#) shows the relationship between color and temporal perception examined using various tasks of different durations; however, existing research displayed inconsistent findings. Smets et al. reported an overestimation of blue light in a verbal estimation and reproduction task. While the luminance of the lights was individually matched, the study did not account for potential changes in the saturation of different color stimuli [14]. Caldwell and Jones also conducted a temporal estimation task wherein participants estimated the passage of 30 s and 40 s in the presence of red, white, and blue lights. However, the results indicated that color had no consistent significant effects on temporal estimation [15].

Unlike earlier investigations using a tachistoscope, recent studies use displays for stimulus presentation, enabling control of the stimuli's physical properties, such as brightness and saturation. Gorn et al. reported that temporal perception was shorter with a blue background than with red or yellow backgrounds; warm colors were perceived for a longer time than blue [16]. Shibasaki et al. reported that the perceived duration of red stimuli were perceived longer than that of blue stimuli. However, those results differed between the sexes; only men overestimated

Table 1. Summaries of studies on the effect of red/blue colors on temporal perception (modified after Yang et al.).

Study	Method		Results (Judged longer)	Statistical values
	Task	Interval duration		
Smets et al. (1969) [14]	Estimation	45 s	Blue > Red	$t = 1.55$, Cohen's $d = 3.07^\dagger$
Caldwell et al. (1985) [15]	Production	30 s, 40 s	No effect	-
Gorn et al. (2004) [16]	Estimation	17.5 s	Blue < Yellow/Red	Blue-Yellow: $F(1, 47) = 3.95$ Blue-Red: $F(1, 59) = 5.21$
Katsuura et al. (2007) [17]	Production	90 s, 180 s	Blue > Red	Blue: $t = 1.05$, Cohen's $d = 0.35^\dagger$ Red: $t = 1.00$, Cohen's $d = 0.33^\dagger$
Shibasaki et al. (2014) [18]	Comparison	0.4–1.6 s	Blue < Red ¹	$F(1, 72) = 14.42$, $\eta_p^2 = 0.17$
Thönes et al. (2018) [19]	Comparison	1.6–2.4 s	Blue > Red	$t = 2.917$, Cohen's $d = 0.81$
Yang et al. (2018) [20]	Comparison	0.75–1.35 s	ipRGC activation: High > Low	$t = 1.478$

[†] Recalculated using reported values

¹ Only for male participants

<https://doi.org/10.1371/journal.pone.0270110.t001>

the duration of the red stimuli [18]. In contrast, Thönes et al. reported a temporal overestimation for blue stimuli but not for red stimuli [19].

The abovementioned studies show an inconsistency in the potential effects of color on temporal perception and indicate a lack of clarity regarding the probable mechanism of temporal perception modulation. Arousal is known to play an essential role in the distortion of perceived time, as suggested by the conspicuous internal-clock model (synonymous to the pace-maker–accumulator model) [12, 21, 22]. Indeed, studies that suggest that red stimuli can cause temporal overestimation, generally explain the mechanism by increased arousal. According to such models, arousal induced by the color red accelerates the internal clock (more time passes on the internal clock than in real life) or the speed of the pulse emitted per unit time (more pulses are stored in the accumulator), resulting in an overestimation of the duration of the red stimuli. Consequently, because the arousal induced by colors may primarily cause temporal modulation via its hue, the inconsistent results could be attributed to the challenge of controlling physical properties such as hue and luminance. In fact, physically brighter stimuli tend to be perceived longer (e.g., [23, 24]), and a recent study showed that perceptual brightness, which induces different pupillary responses, is sufficient to elongate the subjective time [25]. Hence, focusing on these inconsistencies may help us better understand the mechanism of temporal perception. The physical properties of the two colors, especially luminance and saturation, must be carefully matched and compared, as other physical aspects of color can affect individual arousal and subjective magnitude.

To overcome these limitations, we conducted a two-interval duration-discrimination task to assess the effect of equiluminant colors on temporal perception. Specifically, we colorimetrically controlled the saturation of the presented red/blue stimuli and matched the luminance with subjective equiluminant to segregate the former's effect on temporal perception (Experiment 1). Additionally, since short-wavelength light (blue) is more effective than long-wavelength light (red) in evoking a pupillary light reflex (PLR) even at identical physical luminance (e.g., [26–28]), the second study evaluated the temporal distortion effect using pupil diameter-based equiluminant stimuli (Experiment 2). In fact, some recent studies have suggested an interesting connection between pupillary response and subjective passage of time (e.g., [29, 30]); however, few studies have focused on the effect of the PLR ([25]), which can be largely modulated by the physical properties of the stimuli to be timed. Therefore, with this study, we aimed to clarify the effect of color on temporal perception with controlled physical properties

and to investigate the relationship between pupillary response, notably PLR and temporal perception.

Experiment 1 (subjective equiluminance)

Method

Participants. All experimental procedures and methods were approved by the Ethics Committee for Human Research at the Toyohashi University of Technology. Informed written consent was obtained after all procedural details were provided. The experiment involved 26 students (22 men, 4 women; age range: 21–27 years; $M = 22.34$, $SD = 1.44$) at the Toyohashi University of Technology. Eye movement data from two participants were excluded from pupillary analyses because the number of artifacts detected in the trials exceeded the 60% threshold, which could not be interpolated in the preprocessing phase. In the behavioral data analysis, trials with a reaction time > 10 s were also removed from the analysis, assuming poor task performance. This criterion rejected only a 0.18% of the trials. None of the participants reported color vision deficiency, and all had normal or corrected-to-normal vision.

Stimuli and apparatus. The experiment was conducted in a dimly lit room. MATLAB 2016a (The MathWorks, Natick, MA, USA) and the MATLAB toolbox, Psychtoolbox 3 [31–33], were used for stimulus presentation. The instructions and stimuli were presented on a liquid-crystal display (LCD) monitor (Display++, Cambridge Research Systems Ltd, Rochester, UK) with a resolution of $1,920 \times 1,080$ pixels and a refresh rate of 120 Hz. An eye-tracker (Eye-Link 1000, SR Research, Oakland, Canada) was installed below the presentation display, centered on participants. The participant's head was fixed on a chin rest at a viewing distance of 70 cm from the display. All behavioral responses were provided using a trackball or a numeric keypad with unnecessary keys removed.

In the temporal discrimination task (main task), we used two-color disk stimuli with a 10-degree visual angle diameter. We individually adjusted the luminance of the red stimulus in the adjustment task to match the subjective luminance of the blue stimuli, and saturation was controlled despite the difference in hues. In the adjustment task, we used a square stimulus (4×4 visual angle) instead. In both tasks, we displayed all experimental stimuli at the center of the screen.

The xy coordinates of the blue stimulus and the initial coordinates of red in the CIE1931 color space were (0.2286, 0.1936) and (0.4899, 0.3362), respectively. The background luminance remained constant at 37.83 cd/m^2 for achromatic luminance ($x, y = 0.3127, 0.329$). During the stimulus presentation, the fixation cross was located at the center of the screen for pupil diameter recording.

Procedure. The experiment was divided into two tasks: an adjustment task and a duration-discrimination task. The adjustment task consisted of eight trials based on the heterochromatic flicker photometry method [34]. The procedure of the duration-discrimination task was based on recent temporal perception studies [19, 25], with 320 trials conducted over four sessions. Fig 1 shows the protocol for one trial in each session and all the experimental conditions.

Each trial in the adjustment task (Fig 1A, left panel) began with the presentation of a fixation cross at the screen center followed by a flickering stimulus consisting of red and blue squares at the same location. The adjustments were made based on heterochromatic flicker photometry, a method for determining subjective equiluminance for a pair of heterochromatic stimuli in temporal alternation [34]. The flickering frequency of the two colors was set to 10 Hz, following previous studies [35], and the participants were instructed to adjust the intensity of the red stimulus until the flickering was mostly reduced (modulate to the null flickering

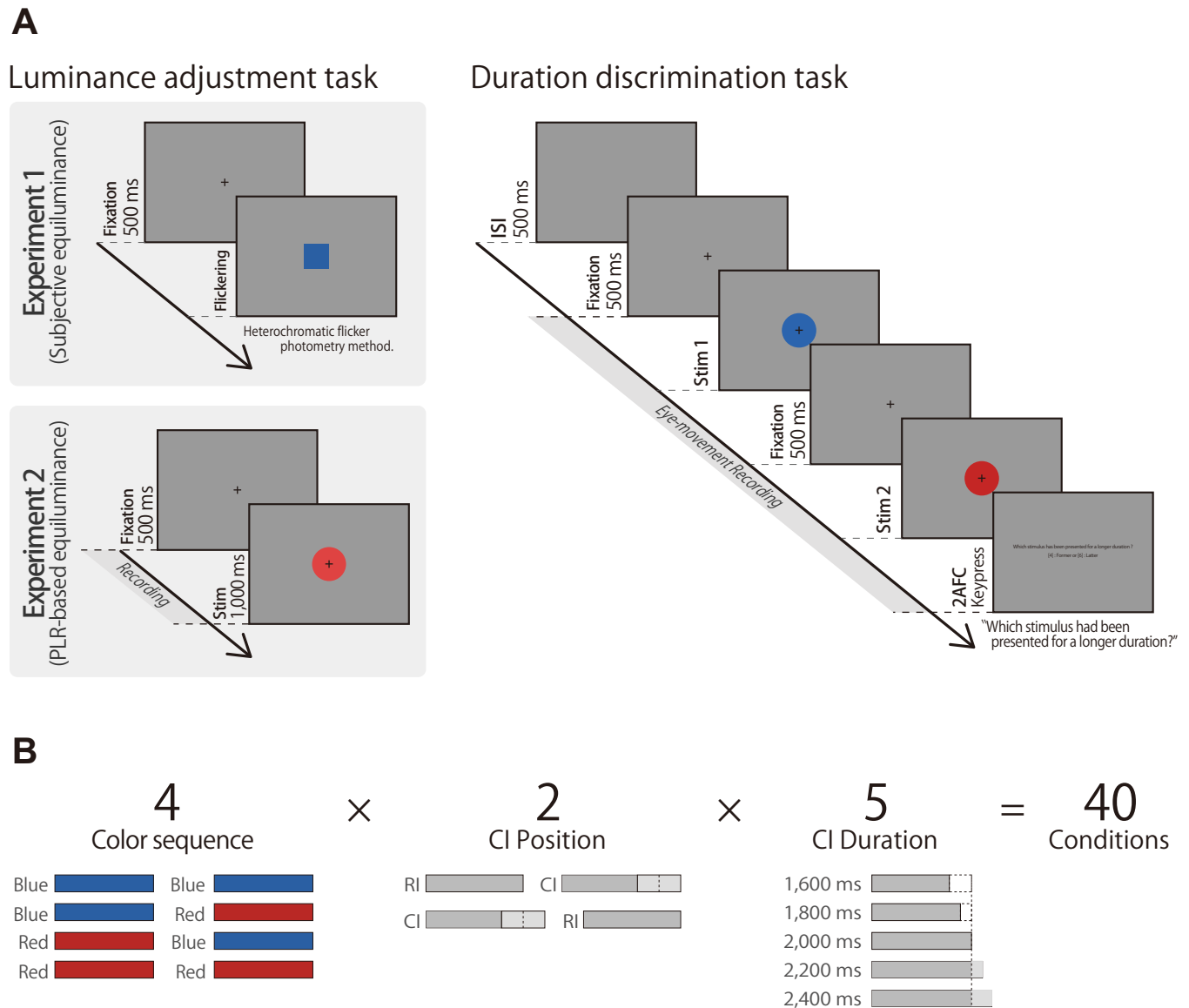


Fig 1. Experimental protocol for one trial. (A) Depiction of one trial sequence in the experiment. Stim1 and Stim2 in the duration-discrimination task refer to either the reference interval (RI) or comparison interval (CI). In Experiment 2, the luminance of the color stimuli was adjusted based on PLR amplitude instead of subjective equiluminance. (B) Illustration of experimental conditions for the duration-discrimination task.

<https://doi.org/10.1371/journal.pone.0270110.g001>

point). Specifically, participants rotated the trackball upward or downward to increase or decrease the luminance of red (the Y-value), respectively, and pressed the button to select the displayed luminance. The initial Y-value of red was randomized over the eight trials, and the overall mean luminance was used in the duration-discrimination task.

Subsequently, the participants performed the two-interval duration-discrimination task (Fig 1A, right panel). Two-color stimuli were presented continuously on the screen followed by a 500-ms inter-stimulus interval (ISI). The red stimuli were individually generated by the Y-value determined in the adjustment task. The fixation point was displayed continuously while eye movement was recorded. In a single trial, one stimulus was presented for 2,000 ms (reference interval; RI), while the duration of the other stimulus varied between 1,600 ms and

2,400 ms in five steps (comparison interval; CI), separated by a 500-ms interval. Following continuous presentation, the participant indicated which visual stimulus was presented for a longer duration using the numeric keypad. The “4” key was used for the former stimulus, while “6” was used for the latter. No feedback was provided. The order of CI/RI positions was randomized and counterbalanced across sessions following a within-subjects design; the three factors were fully cross (color sequence, CI position, and CI duration). Each of the 4 (color sequence) \times 2 (CI position) \times 5 (CI duration) = 40 combinations were presented for 8 times, resulting in a total of 320 trials per participant (Fig 1B).

The eye tracker was adjusted before the first and the subsequent sessions, as necessary, using a standard five-point calibration. Participants were neither instructed to nor discouraged in performing temporal-judgment strategies, such as counting up and other rhythmic activities known to increase temporal sensitivity [36].

Data analysis

Eye movement measurement data. An eye tracker (EyeLink 1000, SR Research, Oakland, Canada) recorded binocular pupillary responses at a sampling rate of 500 Hz. We did not instruct the participants when to blink during eye movement measurements since we placed importance on the temporal task; hence, we interpolated blinks before the main analysis using cubic-spline interpolation [37] in MATLAB 2018b. Pupil size was expressed in arbitrary diameter units (EyeLink values), which were generated by the eye tracker. In the time-course analysis, pupil diameter data were baseline-corrected by subtracting the mean pupil size during -50 ms to 0 ms (stimulus onset), and filtered using a 20-point moving average.

Behavioral data. The participants reported which stimulus had a longer perceived duration, either RI (fixed duration of 2,000 ms) or CI (1,600–2,400 ms in 200-ms steps), in the two-interval duration-discrimination task. To estimate the psychometric functions, the participants' responses (proportion of CI stimuli judged longer) were modeled by fitting the logistic psychometric function using the Palamedes toolbox in MATLAB [38] and computing the point of subjective equality (PSE) and just-noticeable difference (JND). The “threshold” and “slope” parameters used in the toolbox function were left at their default free parameters for all color sequence conditions (B–B, B–R, R–B, and R–R; “B” and “R” for blue and red, respectively, representing the CI–RI combination). Since the PSE represented the level of duration continuum which is subjectively identical to the duration of the RI, the PSE was used to compare the effect of hue on temporal perception. The statistical analyses were performed using R for macOS version 3.5.1 and an repeated-measures analysis of variance (ANOVA) function, anovakun (version 4.8.2). Pairwise comparisons of the main effects were corrected for multiple comparisons using Shaffer's Modified Sequentially Rejective Bonferroni (MSRB) procedure. In the ANOVA, the partial η (η_p^2) was reported as a measure of association strength (effect size). In addition to the analysis in R, JASP [39] was used to compute the Bayes factor BF_{10} in a Bayesian repeated-measures ANOVA, and BF_{01} as relative evidence to interpret the effect of the null hypothesis.

Results

Adjustment task. In the adjustment task, the participants conducted a luminance-matching task based on heterochromatic flicker photometry to determine subjectively equiluminant Y-value for the red stimulus. The mean average of the adjusted Y-value was 0.308, almost identical to the Y-value of blue (0.300). Therefore, we conducted a one-sample Bayesian t-test with a test value of 0.300 on the adjusted Y-values to statistically support this hypothesis. The analysis indicated a Bayes factor BF_{10} of 0.427 and a BF_{01} of 2.34, which can be interpreted as

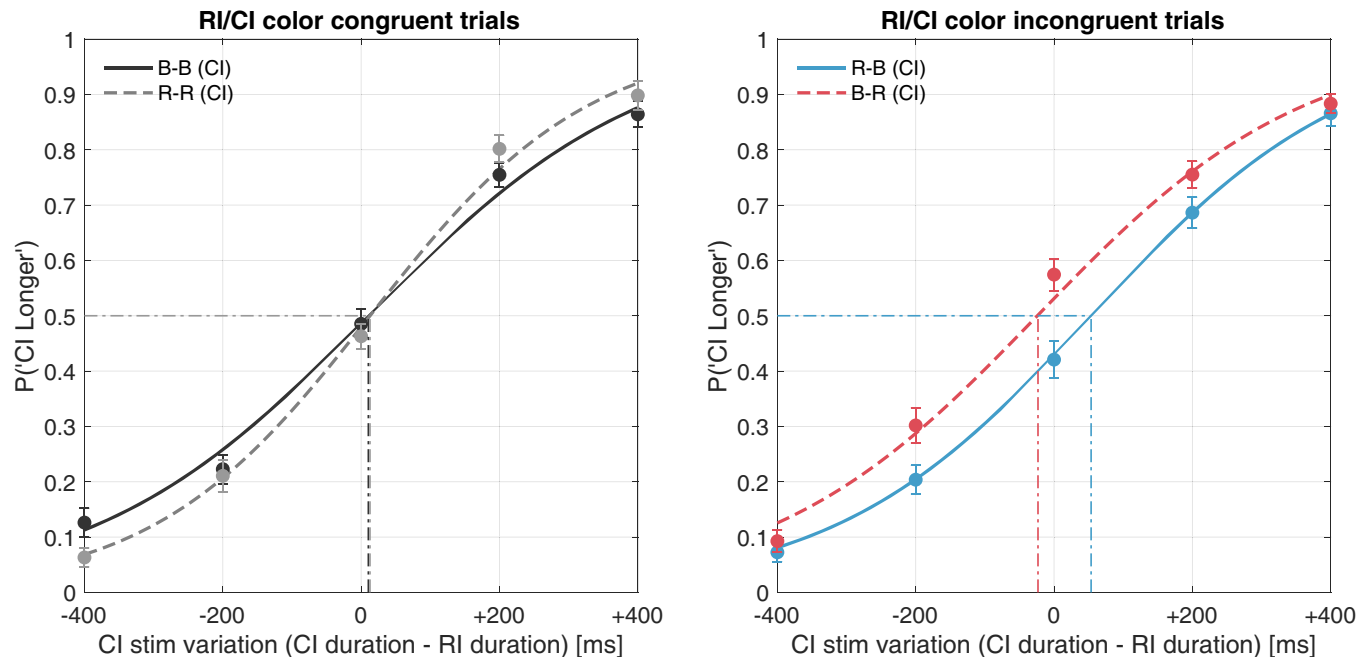


Fig 2. Mean psychometric functions (subjective equiluminance). Left panel: Psychometric function fitting by the proportion of comparison interval–longer (CI) response in congruent color sequence. Right: For an incongruent color sequence. Abbreviations: B–blue, R–red, CI–comparison interval, RI–reference interval.

<https://doi.org/10.1371/journal.pone.0270110.g002>

anecdotal evidence to support H0 over H1 [40]. The mean average of the adjusted Y-value is statistically identical.

Duration judgment. In the duration-discrimination task, the participants indicated whether the RI (duration fixed at 2,000 ms) or CI (variable duration: 1,600–2,400 ms in steps of 200 ms) stimulus was perceived to have a longer duration. The order of the presented CI was not predetermined, and the CI was presented first (CI–RI) or second (RI–CI) with equal probability. Each CI-longer probability was used for psychometric function fitting for each duration step of the CI to compute the PSE and JND. The mean psychometric function shown in Fig 2 was derived by fitting a psychometric function to the average of the five duration steps of the CI. The difference in duration was computed by subtracting the RI duration from the CI duration.

Each solid line in Fig 2 represents a fitted psychometric function. The color conditions of the RI and CI stimuli are indicated via the labels (*e.g.*, R–B represents the RI stimulus being red and the CI stimulus being blue). The dashed vertical lines represent the PSEs under each condition, proportional to the 50% probability of the function; the PSE denotes a specific duration of the CI judged equivalent to the RI, which is presented for 2,000 ms. A relative shift in the fitted function was observed in the incongruent stimulus comparison, whereas no shift emerged in the congruent stimulus comparison. Fig 3 shows the PSE determined using a psychometric function.

A one-way repeated-measures ANOVA was performed on the color sequence, the main effect of which was significant ($F(3, 69) = 6.5613, p = 0.0006, \eta_p^2 = 0.2060$) in the PSE; therefore, a post-hoc *t*-test was also conducted. The post-hoc analysis showed that the two incongruent color sequences, R–B and B–R, differed significantly, as the PSEs were smaller when the CI color was red rather than blue ($t[23] = 3.4053, \text{adjusted } p = 0.0146$), whereas no other color sequence combination showed significant differences. Additionally, the Bayesian repeated-

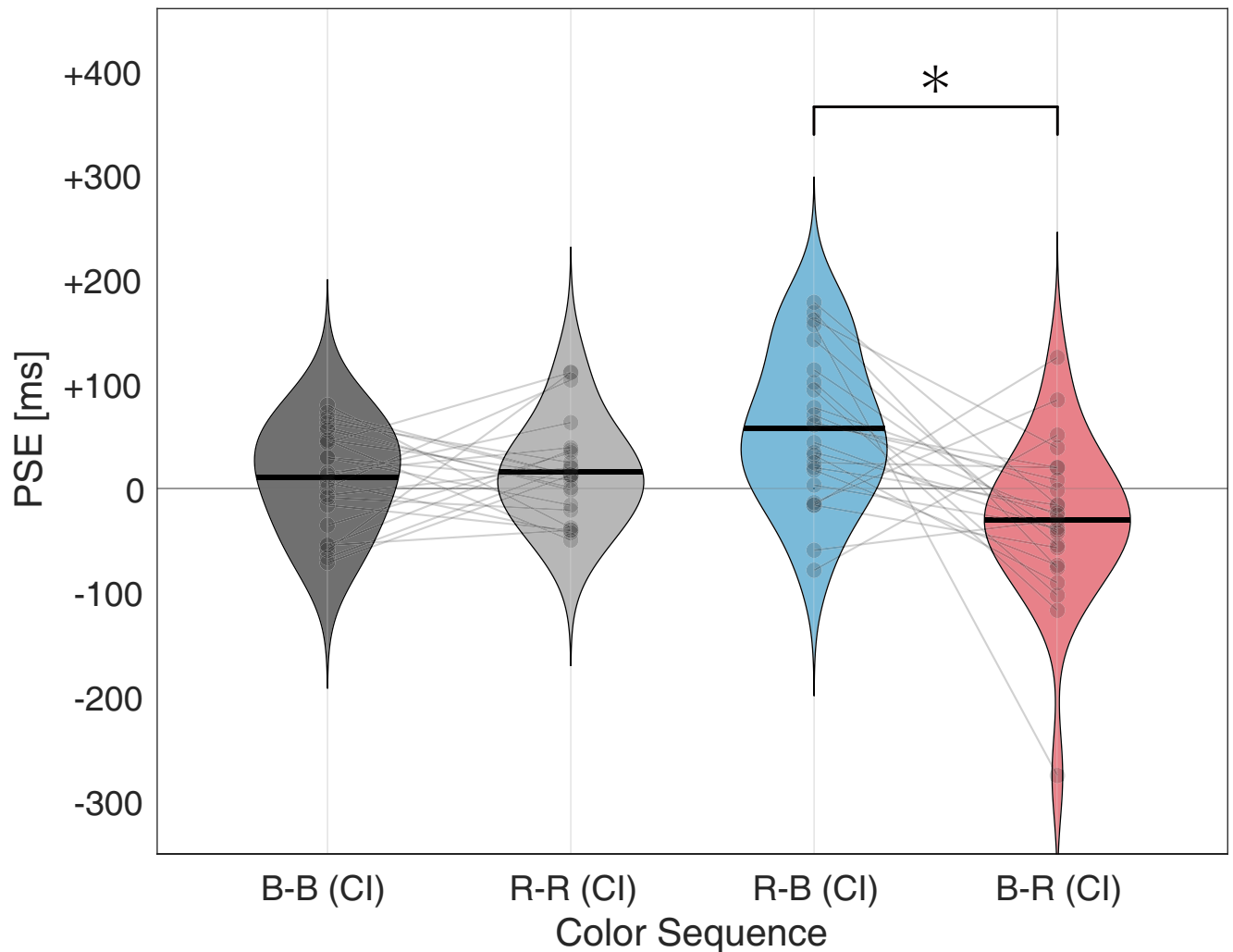


Fig 3. Mean PSE of each color sequence. Violin plots of mean PSE as a function of stimulus sequence. The plots show the data distribution with a solid black line for the mean of the data. The overlaid semitransparent dot indicates the mean value for each participant's data. * Indicates statistically significant ($p < 0.05$) differences in the analysis of variance and post-hoc testing. Abbreviations: B–blue, R–red, CI–comparison interval, PSE–point of subjective equality.

<https://doi.org/10.1371/journal.pone.0270110.g003>

measures ANOVA indicated $BF_{10} = 36.5$ and $BF_{10} = 1.027$ for PSE and JND, respectively. The PSE shift suggests a temporal overestimation of red stimuli compared with blue stimuli. Contrary to the PSE, the effect of color sequence on JND did not reach statistical significance ($F[3, 69] = 2.7088$, $p = 0.0518$, $\eta_p^2 = 0.1054$), suggesting that temporal sensitivity did not differ by color sequence.

Pupillary response. All pupillary responses to the red and blue stimuli in RI and CI durations were averaged across conditions after the raw pupil data were preprocessed, as explained in the Methods section. Fig 4A shows the grand average of pupil responses during a -50 -ms to $1,600$ -ms stimulus onset under both color stimuli and presentation (RI or CI) conditions. The range was set to the shortest CI duration and the responses were aligned according to the presentation onset.

As shown in Fig 4A, a typical PLR was observed for each color stimulus. Thus, the peak PLR amplitude was computed using the average minimum pupil diameter between the 300 – $1,300$ ms time domains, as depicted in Fig 4B. This figure shows that the two-way repeated-

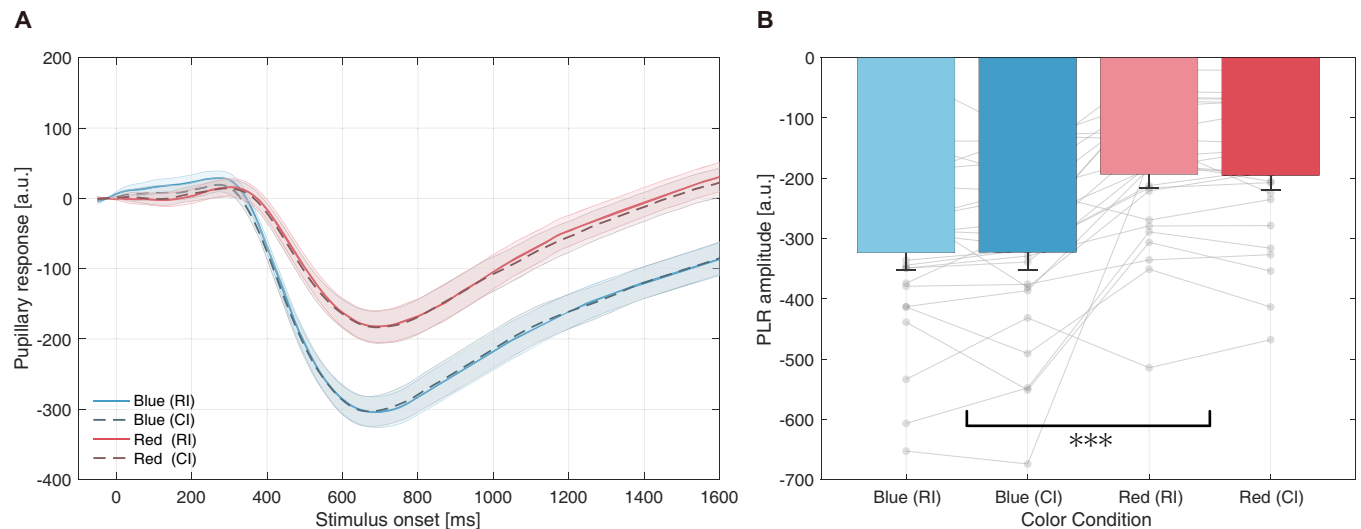


Fig 4. Pupillary response to each color stimulus (subjective equiluminance). (A) Mean change in pupil diameter from stimulus onset. Each line represents pupillary responses to RI and CI stimuli, whereas the shaded regions are standard errors of the mean. The x-axis range is limited to 1,600 ms, the shortest CI duration. (B) Mean peak PLR amplitude of each color condition. Peak PLR amplitude is determined as the minimum pupil diameter between 300–1,300 ms in the time domain. *** Indicates a statistically significant ($p < 0.001$) main effect by ANOVA. The semitransparent dots indicate each participant's data. Abbreviations: ANOVA—analysis of variance, CI—comparison interval, PLR—pupillary light reflex, RI—reference interval.

<https://doi.org/10.1371/journal.pone.0270110.g004>

measures ANOVA (color condition \times stimuli-type condition) on the effect of peak PLR amplitude revealed a significant main effect of color condition ($F[1, 23] = 31.7220$, $p < 0.001$, $\eta_p^2 = 0.5797$). Post-hoc comparisons also suggested a significant difference between the color conditions in each stimulus-type condition. However, the stimulus-type condition, did not reach statistical significance ($F[1, 23] = 0.0059$, $p = 0.9393$, $\eta_p^2 = 0.0003$). These results suggest that blue evoked a larger PLR than red, despite the two colors being individually matched based on subjective equiluminance.

Discussion

In the first study, we investigated whether the perceived duration of a visual stimulus was affected by hue in subjective equiluminant conditions. This was also conducted to examine previous studies' results that contradict each other (e.g., [18–20]), under stringent control of physical properties, since these may be due to lack of control of the physical properties, especially the luminance of red and blue stimuli. Furthermore, we performed pupillometry to investigate the relationship between the PLR response and temporal perception, as a recent study suggested possible associations between the two [25], with the former differing under stimuli of different wavelengths [26]. Based on the known effects of arousal on temporal perception and the vital function of red, we hypothesized that the participants would overestimate (perceive longer) the duration of red relative to blue.

The participants performed a two-interval duration-discrimination task at supra-second range intervals. According to the psychometric function analysis, the shift in the fitted function indicated that the duration of red stimuli was perceived as longer than that of blue stimuli (Fig 2, right panel). The mean difference in the PSE suggested that the durations of the blue and red stimuli were perceived as identical when the red stimulus was actually displayed 88 ms shorter (4.28%) than the blue stimulus (Fig 3).

Moreover, we must emphasize that this effect was observed even when the colors of the two stimuli were controlled for saturation (colorimetric adjustments in terms of the CIE1931 color

space) and luminance differences (individually adjusted to subjective equiluminance using the heterochromatic flicker photometry method). Our results suggest that the temporal distortion effect of red and blue is primarily driven by hue and that the effects of luminance and saturation are partially limited. Moreover, notwithstanding the adoption of the heterochromatic flicker photometry method to satisfy subjective equiluminance conditions, the mean average of the adjusted Y-value was almost identical, and the red and blue stimuli were also closely physically equiluminant in mean.

Furthermore, when we examined the pupillary responses, the PLR profile differed considerably, especially in amplitude. At the PLR peak for the blue stimulus, the pupil diameter was 1.66 times larger than that for the red stimulus (Fig 4). Since the PLR is driven by known photoreceptors, such as rods, cones, and intrinsically photosensitive retinal ganglion cells (ipRGCs) [41], all of which have different sensitivity characteristics [42], the amplitude of the PLR to red/blue stimuli is known to differ [43]. Szabadi et al. reported that short-wavelength light is more effective than isoluminant long-wavelength light in evoking the PLR because of the stimulation of melanopsin-containing photoreceptors [26]. Our pupillary response data also showed that the PLR amplitude differed according to hue under subjective equilibration.

Bombeke et al. reported that differences in pupil diameter could modulate the magnitude of the initial feedforward response in the primary visual cortex and could, therefore, represent a confounding variable in studies investigating the neural influence of psychological factors [44]. Suzuki et al. also discovered that stimuli that induce larger constrictions causally reduce the amount of light emitted to the retina, causing a drop in EEG signals, specifically steady-state visual evoked potentials (SSVEPs; an EEG that reflects the attention level to visual stimuli, typically recorded from occipital channels) recorded via electrodes located in the occipital area [45]. Since the apparent duration is typically known as a positive function of sensory signal intensity, various factors leading to a larger PLR in response to blue stimuli may explain the effect of color on temporal perception based on sensory signals. In conclusion, our findings suggest that red stimuli were temporally overestimated compared to blue stimuli under subjective (nearly physical) equiluminance. However, as the PLR differs according to the hue of the stimulus, its effect on temporal perception must be clarified to fully elucidate the potential effect of color among inconsistent research findings. Hence, to determine the relationship between temporal perception, hue, and pupillary responses, we conducted an additional control study with equiluminant stimuli based on PLR-matched luminance.

Experiment 2 (PLR-based equiluminance)

Method

Participants. As with Experiment 1, all procedures were approved by the Committee for Human Research at the Toyohashi University of Technology. Informed written consent was obtained after all procedural details were explained. Sixteen students (11 men, 5 women; age range: 20–34 years; $M = 25.69$, $SD = 3.65$) at the University of Oslo took part in the experiment. Two participants' eye movement data were excluded from pupil analyses, and 2% of the trials were rejected based on excessive reaction time. The rejection criteria for both eye movement data and behavioral data were identical to those in Experiment 1.

Stimuli and apparatus. The task was conducted in a different dimly lit room using MATLAB 2019a (The MathWorks, Natick, MA, USA) and MATLAB's Psychtoolbox, as mentioned in Experiment 1. The experimental stimuli were presented on an LCD monitor (P2213, Dell Inc.) with a resolution of $1,680 \times 1,050$ pixels and a refresh rate of 60 Hz. Colorimetric calibrations were conducted in advance for linear light output, and maximum luminance was corrected to 120 cd/m^2 to match the display specifications in Experiment 1. The apparatus

arrangements also followed those in Experiment 1, except that the viewing distance was set to 66 cm from the screen. All behavioral responses were delivered via a numeric keypad with unnecessary keys removed.

The chromatic properties of the stimuli presented in the temporal discrimination task (main task) were identical to those in Experiment 1. However, the luminance of the stimuli was computed individually in the PLR-matching task. In this task, the luminance of the colored disks (diameter of 10-degree visual angle) varied at $Y = 0.22, 0.25, 0.28, 0.31, \text{ and } 0.34$.

Procedure. The procedure of the temporal discrimination task was nearly identical to that in Experiment 1. However, instead of the heterochromatic flicker photometry method, a PLR-based method was used in Experiment 2 (Fig 1A, left panel).

In the PLR-matching task, each trial began with a presentation of the fixation cross for 500 ms followed by a red/blue disk for 1,000 ms at the center of the screen. The participants were instructed to passively view the stimuli. The two factors were fully crossed ($2 [\text{color}] \times 5 [\text{luminance}] = 10$ combinations) and randomly presented in a total of 50 trials per participant over two sessions. After stimulus presentation, the pupillary response was analyzed offline to determine a specific Y -value of blue. After preprocessing the pupillary data, the average PLR peak of all ten conditions was computed, and a linear regression analysis was performed to fit the discrete data points of luminance and PLR amplitude for both red and blue. Finally, luminance was evaluated via a fitted polynomial at the point where the PLR amplitude of red became equivalent. Simply put, the Y -value of blue that matched the PLR amplitude of red ($Y = 0.300$), was calculated. This calculated value was used to generate the blue stimulus in the following duration-discrimination task.

Followed by a sufficient break, the participants performed the two-interval duration-discrimination task (Fig 1A, right panel). As mentioned above, the procedure of the main task was identical to that of Experiment 1. Fig 1B depicts the combination of the 40 experimental conditions.

Data analysis

Eye movement measurement data. All aspects of behavioral data analysis were analogous to those in Experiment 1, whereas pupil size and eye movements were measured using the SensoMotoric-Instruments RED500 (SMI, Berlin, Germany) eye-tracking system at a sampling rate of 250 Hz. A nine-point calibration was performed before each session in the PLR-matching and duration-discrimination tasks. In both phases, participants were not instructed when to blink, and, thus, blinks and artifacts were interpolated before analysis using the same method as in Experiment 1 [37]. Trials that retained additional artifacts, computed by thresholding peak changes in the velocity of the pupillary response, were excluded from analysis.

Pupil size was measured in SI units (mm) by the eye tracker. Because of the specifications of the eye-tracking system, the units varied from those in Experiment 1. Measurements in terms of absolute units may not be entirely invariant to factors such as viewing distance and are, thus, somewhat arbitrary [46]. Therefore, for all time-course analyses conducted in this study we used baseline-corrected relative values, which consider random fluctuations in pupil size over time and allowed us to compare results in different units. As for Experiment 1, pupil diameter data were filtered using a 20-point moving average.

Results

PLR-matching task. Raw pupil data were preprocessed, as explained in the Methods section. Fig 5A shows the pupillary response for one participant.

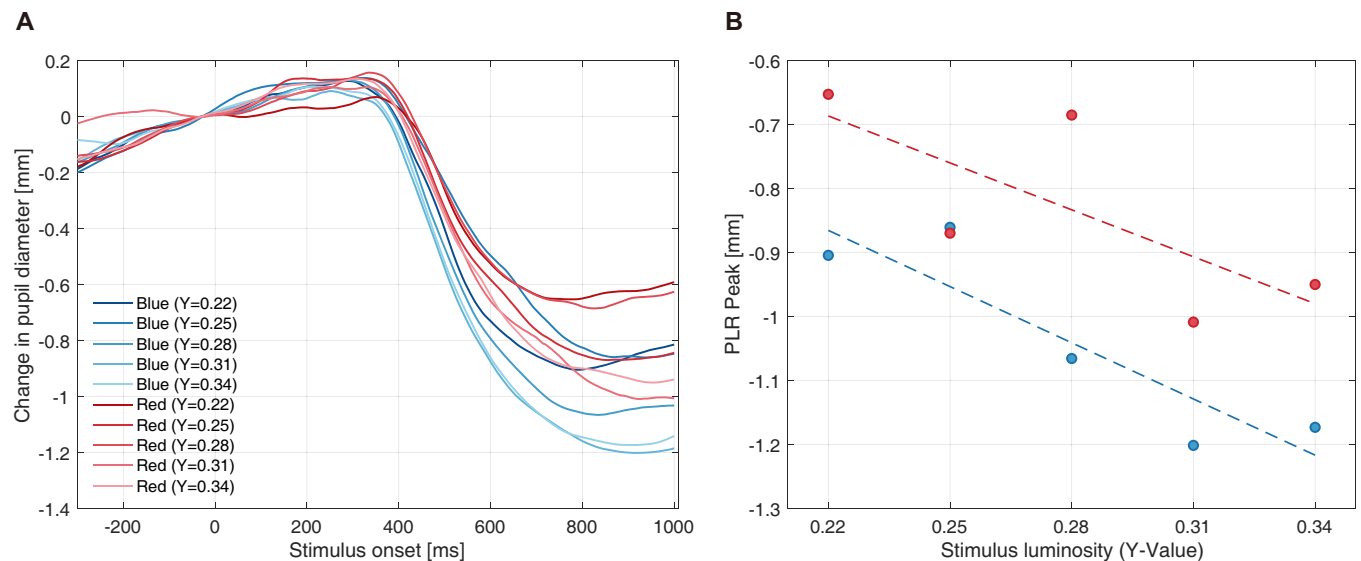


Fig 5. Example pupillary response and peak PLR amplitude. (A) One participant's mean pupillary response to different hues and luminances (color and luminance: two (color) \times five (luminance) = ten combinations). Solid lines represent pupillary responses for each condition. (B) An example of mean peak PLR amplitude for each color condition. PLR diameter is computed as the minimum pupil diameter. The two dashed lines represent the fitted linear regression model, composed of discrete luminance and peak PLR amplitude data points, for red and blue stimuli, respectively. Abbreviations: PLR—pupillary light response.

<https://doi.org/10.1371/journal.pone.0270110.g005>

The typical PLR profile was observed from the responses in hue and luminance conditions; that is, a tendency for (1) PLR amplitude (constriction amount) to increase with luminance and (2) blue to induce a prominent PLR. The first finding can be explained by pupil constriction in response to brightness, a function of retinal illuminance control of physical inputs from the ambient environment [42]. Second, as short-wavelength light is more effective than long-wavelength in evoking the PLR, pupil constriction was larger for the blue stimuli. Therefore, we computed the average of the minimum pupil diameter between the 400–1,000 ms time domains in each condition, as shown in Fig 5B, with discrete data points of luminance and PLR peaks. Although Watson and Yellott reported a unified formula wherein luminance and pupil diameter had a logarithmic relationship over a wide range of luminances (10^{-4} to 10^4 cd/m^2) [47], the intensity of the stimuli used in this study was limited to a modestly narrow luminance range (e.g., approximately 26.4–39.6 cd/m^2 in achromatic luminance). Hence, we concluded that linear regression provided adequate fitting accuracy, as indicated by the dashed lines in Fig 5B. The mean calculated Y-value was 0.3037 (SD = 0.0586).

Pupillary response. As previously conducted, we tracked pupil diameter changes induced by the presentation of color stimuli in CI positions and all CI durations. Fig 6A shows the grand average of the pupil response between 50 ms before and 1,600 ms after stimulus presentation under each color and stimulus-type condition. Furthermore, the profile of a typical orienting response (approximately 200 ms from onset) [48] and the PLR were observed (approximately 300–700 ms from onset). Fig 6B shows the minimum mean pupil diameter of the PLR, computed by the average of the minimum peak PLR diameter between the 300–1,300 ms time domains.

Two-way repeated-measures ANOVA (color condition \times stimulus-type condition) on the effect of peak PLR amplitude showed no significant main effect on color condition ($F[1, 13] = 2.5119$, $p = 0.1370$, $\eta_p^2 = 0.1619$) or stimulus-type condition ($F[1, 13] = 2.9737$, $p = 0.1083$, $\eta_p^2 = 0.1862$). These statistical findings support the fact that PLR matching was performed.

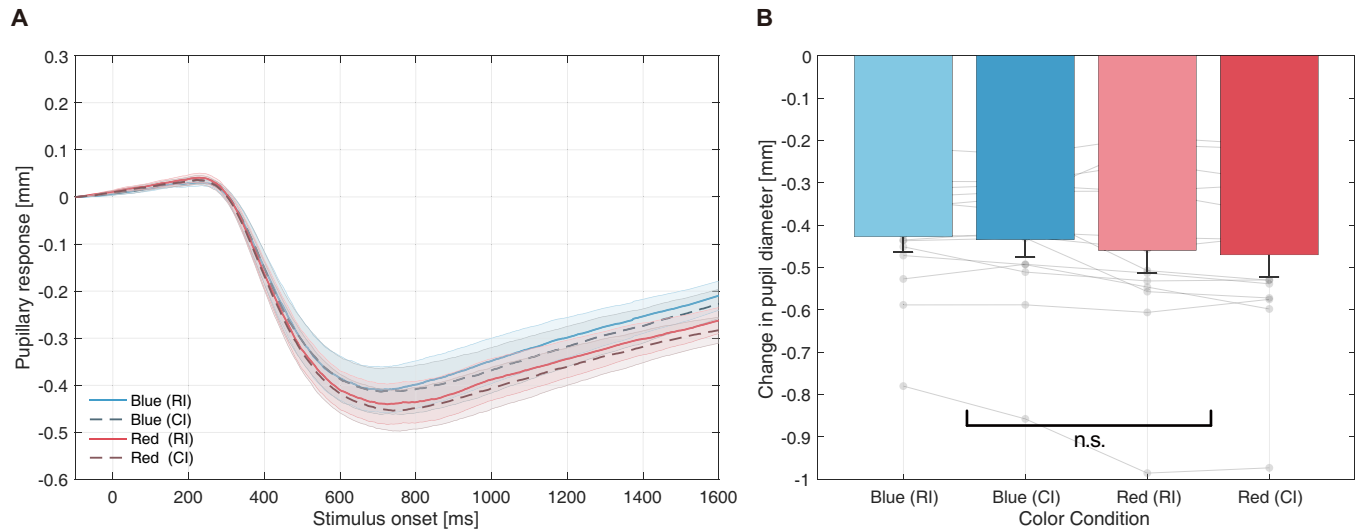


Fig 6. Pupillary response to each color stimulus (PLR-based equiluminance). (A) Mean change in pupil diameter from stimulus onset. Each line represents pupillary responses to RI and CI stimuli, whereas the shaded regions are standard mean errors. (B) Mean peak PLR amplitudes for each color condition. Peak PLR amplitude is determined as the minimum pupil diameter between 300–1,300 ms in the time domain. The overlaid semitransparent dots indicate each participant's data. Abbreviations: CI–comparison interval, PLR–pupillary light reflex, RI–reference interval.

<https://doi.org/10.1371/journal.pone.0270110.g006>

Duration judgment. The CI-longer probabilities for all CI durations were again used for psychometric function fitting. The PSEs for each color sequence condition (B–B, R–R, R–B, and B–R) were calculated by fitting a cumulative normal function and determining the 50% point. Fig 7 shows the mean psychometric function computed using the average of all participants' CI-longer proportions in each CI duration condition.

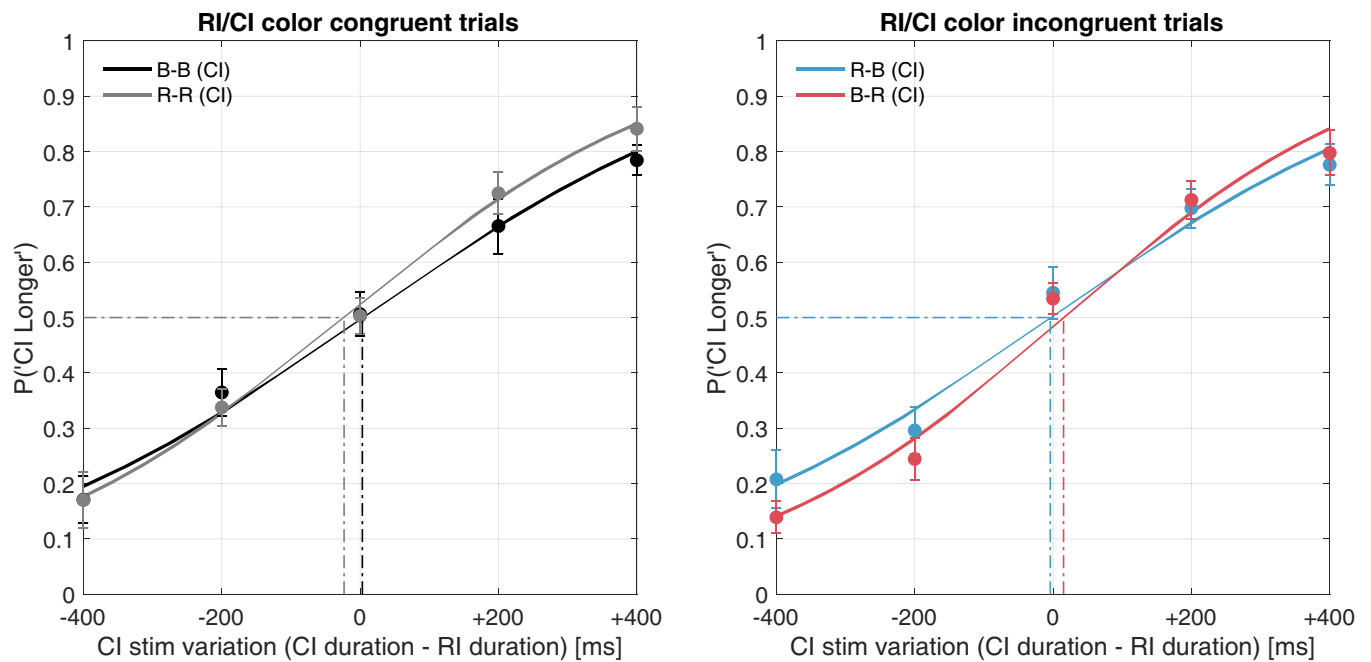


Fig 7. Mean psychometric functions (PLR-based equiluminance). Left panel: Psychometric function fitting according to the proportion of comparison interval-longer (CI) responses in congruent color sequence. Right: For incongruent color sequence. Abbreviations: B–blue, R–red, CI–comparison interval, RI–reference interval.

<https://doi.org/10.1371/journal.pone.0270110.g007>

From the estimated psychometric function, no significant shift was observed in congruent- or incongruent stimulus comparisons. The computed PSEs and JND were used for statistical testing. A one-way repeated-measures ANOVA was conducted on each color sequence; the effect for the PSE was not significant ($F[3, 39] = 1.1105$, $p = 0.3565$, $\eta_p^2 = 0.0616$), and the effect size was relatively small [49]. In contrast, a significant main effect was confirmed for the JND ($F[3, 39] = 3.1195$, $p = 0.0369$, $\eta_p^2 = 0.1935$); however, none of the pairs in the post-hoc comparisons reached statistical significance. Bayesian repeated-measures ANOVA indicated $BF_{10} = 3.012$ and $BF_{10} = 1.718$ for the PSE and JND, respectively. The Bayes factor of the JND analysis ($BF_{10} = 1.718$, $BF_{01} = 0.582$) reaching statistical significance in the classical ANOVA, indicated anecdotal evidence to support H1 over H0 [40, 50]. Notably, the statistics suggested no shift in the PSE—in other words, no significant temporal distortion due to the colors.

Discussion

To clarify the causal role of PLR amplitude induced by the to-be-timed stimuli and temporal perception, we replicated the first experiment in the second control experiment, excluding the equiluminance method, to investigate whether the perceived duration of the visual stimulus is affected by hue in PLR-matched conditions. This objective was based on two study backgrounds: (1) previous studies investigating the temporal distortion effect on hue show inconsistent results, which may be due to the failure of stimulus intensity matching; and (2) pupil diameter differs depending on the hue, which can play a role in temporal distortions, in addition to the arousal level induced by the hue. To the best of our knowledge, this study is the first attempt to investigate the relationship between the PLR response, temporal perception, and stimulus color.

Regarding PLR matching, Fig 6 illustrates that the PLR profile and peak constriction were similar among the hue conditions. As PLR amplitude generally differs in equiluminant color conditions because of stimulation of different photoreceptors, the results suggest adequate individual PLR matching in the first task. Specifically, the mean Y-value applied for the blue stimuli was 0.284, smaller than that for red (0.300). Since blue light is more effective in evoking the PLR, the actual value is expected to be lower than the computed value.

Statistical analysis suggested no significant temporal distortion via the hue condition, even though arousing stimuli are typically reported to be perceived longer. Many researchers have reported that observing emotional expressions can cause temporal distortion by increasing perceivers' arousal levels (e.g., [51]). Moreover, because red is considered a color of arousal, it can induce time overestimation. However, interestingly, the mean luminance to match the PLR amplitude was smaller for blue than for red, in this study. By comparing the physical luminance of the stimuli in Experiment 1, blue was adjusted to be darker in this study, whereas red was almost identical (Y-values of 0.300 and 0.284, respectively). Considering that “apparent duration is typically a positive function of the sensory signal intensity,” red should have been perceived even longer, as the luminance of the comparative blue was adjusted to be smaller. In conclusion, our findings suggest that the temporal distortion effect of hue does not occur under PLR-based equiluminance, and it may be plausible that stimulus intensity, especially the physical luminance and arousal, is not the sole driving factor of temporal distortion.

General discussion

This study investigated whether the color of a visual stimulus affects its perceived duration in different equiluminant conditions, to uniformly explain inconsistent research findings (see Table 1 for the results of previous temporal perception studies).

In Experiment 1, the red/blue stimuli were matched by subjective luminance using heterochromatic flicker photometry. From the behavioral results, a shift in the PSE was observed in incongruent color conditions, indicating an overestimation of red stimuli compared to blue stimuli. In contrast, our analysis suggests no JND modulation in temporal judgments. These behavioral results aligned with those of previous studies (e.g., [14, 16, 18]) that observing emotional expressions involving the color red can lead to temporal distortion. Hence the overestimation of the duration of red stimuli in Experiment 1 may be due to the hue-induced arousal effect. Notably, this effect was observed even when the colors of the two stimuli were controlled for saturation (colorimetric adjustments in the CIE1931 color space) and subjective luminance; consequently, the adjusted luminance was also physically equiluminant. However, continuous pupillary recordings revealed significant differences in the PLR between the two stimuli. The blue stimulus induced notable constriction relative to the red stimulus. Several researchers have reported the possibility of differences in pupil diameter to directly modulate the magnitude of the response in the primary visual cortex, and stimuli that induce larger constrictions can causally reduce the amount of light entering the retina, leading to a drop in EEG amplitude in the primary visual cortex [44, 45]. Moreover, because apparent duration is typically a positive function of sensory signal intensity, pupillary responses such as the PLR should also be considered alongside physical aspects as factors that modulates the subjective passage of time. Therefore, we conducted a control experiment that adapted the duration-discrimination task to PLR-based equiluminant conditions (Experiment 2). Psychometric functional analysis in Experiment 2 revealed no significant distortion of duration according to hue, when the PLR was individually matched; the overestimation of the duration of the red stimulus faded when the stimulus luminance was matched based on the PLR amplitude. An additional two-way repeated-measures ANOVA on the effect of the PSE, with color sequence as a within-subjects factor and experiment condition as a between-subjects factor, was conducted to support the notion that the PSE effect significantly differs when the PLR is not controlled (Experiment 1) vs. when it is controlled (Experiment 2). Note that these analyses were conducted on data with unequal sample sizes due to different participant numbers in the experiments. The analysis revealed a significant main effect on experimental condition ($F[1, 36] = 6.205$, $p = 0.017$, $\eta_p^2 = 0.147$), and on the interaction of color sequence and experimental condition ($F[3, 108] = 4.807$, $p = 0.004$, $\eta_p^2 = 0.118$). Post-hoc comparisons on the interaction, showed a significant difference in three color sequence pairs on the effect of the PSE, (Exp2-RR-Exp1-RB [$t = -3.653$, adjusted $p = 0.010$], Exp1-RB-Exp2-RB [$t = 3.383$, adjusted $p = 0.024$], and Exp1-RB-Exp2-BR [$t = 3.434$, adjusted $p = 0.023$]). This interaction supports the fact that different equiluminance methods can result in differences in temporal perception.

Although the physiological models suggesting a differential effect of different PLR amplitudes on temporal perception are currently lacking, our newly found causality between the equiluminance method and temporal perception can be explained by neural intensity fluctuations based on the amount of incident light entering the pupil. The PLR generally controls pupil diameter to assist in vision adaptation via pupil constriction against intense ambient luminance and dilation in a dark environment. Therefore, the physical constriction of the pupil reduces the number and probability of photons captured by the retina. Notably, recent studies suggest that the PLR is not merely a reflex to brightness, but also affected by higher-order factors [42]. As a matter of fact, pupil size also fluctuates according to hue (e.g., [26–28, 43]), and even illusory brightness and subjectively perceived luminance (e.g., [52–54]). Furthermore, Kinzuka et al. recently reported that temporal perception is also modulated by the illusory brightness of a glare illusion (a visual illusion that enhances perceived brightness without changing physical luminance) [25], resulting in a different PLR response during the to-be-

timed stimuli presentation [55, 56]. In this study, the authors explained this probable temporal distortion mechanism as an internal magnitude decrease in the illusory brighter stimuli caused by the reduced light entering the eye from pupillary constriction. Recently, Suzuki et al. reported that the amplitude of SSVEPs decreased in accordance with constriction-eliciting stimuli [45]. Moreover, they described this inhibition of SSVEPs as a causal relationship between illusion-induced pupil constriction and less light entering the pupil. These findings agree that the duration of red stimuli (relatively larger pupil diameter) was considered longer than blue (relatively smaller pupil diameter); the energy entering the eye was higher when the luminance of the stimuli was controlled by subjective (\approx physical) equiluminance (Experiment 1). In fact, the pupil diameter at the PLR peak induced by the red stimulus was only approximately 60% of that induced by the blue stimulus.

Furthermore, Katsuura et al., who examined the effect of red and blue colors on temporal perception, reported that the cortical activity level in the visual pathway (retina-lateral geniculate body-primary visual cortex) might influence the temporal modulation effect, as mentioned earlier [17]. Since other researchers noted that pupil constriction and less light entering the pupil can result in decreased activation in visual-related brain regions, this may cause temporal underestimation of the interval, an assumption based on the coding efficiency model [57]. In this model, Eagleman and Pariyadath proposed that neural coding efficiency and the degree of activation provide a basis for temporal perception. Several subsequent studies revealed that various non-temporal factors that lead to temporal overestimation also evoke larger neural responses (e.g., [12, 58]). Despite the speculative relationship between the cortical activity level in the visual pathway and temporal perception, from these relations, the disappearance of temporal modulation can be explained by the indirect control of the internal magnitude of the to-be-timed stimuli, by matching the PLR. In Experiment 1, the stimulus luminance was matched based on subjective and physical luminance. As is evident from Fig 4, PLR constriction was weaker for the red stimulus; that is, the neural activity in the visual pathway of red stimuli was considered larger than that of blue stimuli. According to the coding efficiency model, stimuli that induce more extensive neural activity are perceived to be displayed for a longer period of time; hence, the local activity evoked by the red stimulus can explain why it was perceived to be displayed for a significantly longer period than the blue stimulus. However, in the second control experiment, because the luminances of the two colors were individually controlled to match the peak PLR amplitude, indirectly controlling the photons captured by the retina, it is possible that the temporal modulation may not have occurred. Although we cannot discount the hue-arousing effect on temporal distortion since we were not able to directly assess subjective arousal, the results from both experiments suggest another possible mechanism of how the hue of a visual stimulus can modulate temporal perception. The inconsistent results noted in Table 1 could be attributed to the challenge of controlling physical properties, which results in different PLR amplitudes.

Here, we will note few limitations to the study. First, temporal processing mechanisms may vary between sub-second (milliseconds) and supra-second (seconds to minutes) interval ranges [59, 60]. Additionally, recent studies have suggested that the PLR profile differs in late components in response to a blue stimulus, as ipRGCs (which respond to blueish light) [41] respond more slowly to light than rods and cones do. As this study was focused on the judgment of display intervals ranging from 1,600–2,400 ms, the color effect and the implications of the PLR on temporal perception may differ in other temporal ranges. Second, the experimental environment may not have been stringently controlled because the two studies were conducted in different locations on different participant groups. Despite colorimetric calibration and baseline correction, we cannot entirely exclude the possibility that the luminance of the display or either room was not completely identical. As baseline pupil diameter constitutes

various factors, some aspects, such as cognitive load (*e.g.*, difficulties in the duration-discrimination task) and pupil near response (*e.g.*, visual distance) might affect the pupil diameter during the task [42]. These effects are considered negligible since we compared pupillary responses within each study and focused solely on the relative changes in pupil diameter. However, in future studies, eye-tracker models and experimental environments, including the participant group, should be controlled, to analyze the pupil diameter baseline and directly compare the results within experiments.

In our analyses of psychometric functions and pupil diameter, our results showed that the perceived duration of red was overestimated compared to blue, even when the physical aspects of the stimuli were strictly controlled in subjectively (\approx physically) equiluminant conditions. However, this overestimation faded when the luminances of the two stimuli were matched based on the PLR amplitude. This causality between the equiluminance method and temporal perception may be due to the amount of incident light entering the pupil, leading to the modulation of different degrees of neural activation in visual-related regions. These results suggest another possible mechanism of temporal distortion by hue, in addition to the previously discussed hue-arousing effect. In addition, our results suggests that the pupillary somehow plays a role in temporal perception from a phenomenological perspective. Although these links remain speculative at present and require further consideration, incorporating neuroscientific approaches and discussion on theoretical frameworks, we believe that discovering this causal role may help clarify the inconsistent results of previous studies and further elucidate the underlying mechanisms of temporal perception.

Acknowledgments

We are grateful to the TUT Visual Perception and Cognition lab and Cognitive Neurotechnology unit members for discussing earlier versions of the article. We would also like to thank the editor and the two anonymous reviewers for helping us improve the manuscript.

Author Contributions

Conceptualization: Yuya Kinzuka, Fumiaki Sato, Tetsuto Minami, Shigeki Nakauchi.

Data curation: Yuya Kinzuka, Fumiaki Sato.

Formal analysis: Yuya Kinzuka, Fumiaki Sato.

Funding acquisition: Tetsuto Minami, Shigeki Nakauchi.

Investigation: Yuya Kinzuka.

Supervision: Tetsuto Minami, Shigeki Nakauchi.

Validation: Tetsuto Minami.

Visualization: Yuya Kinzuka.

Writing – original draft: Yuya Kinzuka.

Writing – review & editing: Yuya Kinzuka, Fumiaki Sato, Tetsuto Minami, Shigeki Nakauchi.

References

1. Babin BJ, Hardesty DM, Suter TA. Color and shopping intentions The intervening effect of price fairness and perceived affect. *J Bus Res.* 2003; 56: 541–551. [https://doi.org/10.1016/s0148-2963\(01\)00246-6](https://doi.org/10.1016/s0148-2963(01)00246-6)
2. Kwallek N, Lewis CM, Robbins AS. Effects of Office Interior Color on Workers' Mood and Productivity. *Percept Motor Skill.* 1987; 66: 123–128. <https://doi.org/10.2466/pms.1988.66.1.123>

3. Hill RA, Barton RA. Red enhances human performance in contests. *Nature*. 2005; 435: 293–293. <https://doi.org/10.1038/435293a> PMID: 15902246
4. Pomerleau V, Fortier-Gauthier U, Corriveau I, Dell'Acqua R, Jolicœur P. Colour-specific differences in attentional deployment for equiluminant pop-out colours: Evidence from lateralised potentials. *Int J Psychophysiol*. 2014; 91: 194–205. <https://doi.org/10.1016/j.ijpsycho.2013.10.016> PMID: 24188915
5. Buechner VL, Maier MA, Lichtenfeld S, Schwarz S. Red—Take a Closer Look. *Plos One*. 2014; 9: e108111. <https://doi.org/10.1371/journal.pone.0108111> PMID: 25254380
6. Ali MR. Pattern of EEG recovery under photic stimulation by light of different colors. *Electroen Clin Neuro*. 1972; 33: 332–335. [https://doi.org/10.1016/0013-4694\(72\)90162-9](https://doi.org/10.1016/0013-4694(72)90162-9) PMID: 4114919
7. Jacobs KW, Hustmyer FE. Effects of Four Psychological Primary Colors on GSR, Heart Rate and Respiration Rate. *Percept Motor Skill*. 1974; 38: 763–766. <https://doi.org/10.2466/pms.1974.38.3.763> PMID: 4842431
8. Elliot AJ, Payen V, Brisswalter J, Cury F, Thayer JF. A subtle threat cue, heart rate variability, and cognitive performance. *Psychophysiology*. 2011; 48: 1340–1345. <https://doi.org/10.1111/j.1469-8986.2011.01216.x> PMID: 21564123
9. Mehta R, Zhu RJ. Blue or Red? Exploring the Effect of Color on Cognitive Task Performances. *Sci New York N Y*. 2009; 323: 1226–9. <https://doi.org/10.1126/science.1169144> PMID: 19197022
10. Xia T, Song L, Wang TT, Tan L, Mo L. Exploring the Effect of Red and Blue on Cognitive Task Performances. *Front Psychol*. 2016; 7: 784. <https://doi.org/10.3389/fpsyg.2016.00784> PMID: 27303343
11. Elliot AJ, Maier MA, Moller AC, Friedman R, Meinhardt J. Color and psychological functioning: The effect of red on performance attainment. *J Exp Psychology Gen*. 2007; 136: 154. <https://doi.org/10.1037/0096-3445.136.1.154> PMID: 17324089
12. Matthews WJ, Meck WH. Temporal cognition: Connecting subjective time to perception, attention, and memory. *Psychol Bull*. 2016; 142: 865. <https://doi.org/10.1037/bul0000045> PMID: 27196725
13. Grondin S. Timing and time perception: A review of recent behavioral and neuroscience findings and theoretical directions. *Atten Percept Psychophys*. 2010; 72: 561–582. <https://doi.org/10.3758/APP.72.3.561> PMID: 20348562
14. Smets G. Time Expression of Red and Blue. *Percept Motor Skill*. 1969; 29: 511–514. <https://doi.org/10.2466/pms.1969.29.2.511> PMID: 5361716
15. Caldwell JA, Jones GE. The Effects of Exposure to Red and Blue Light on Physiological Indices and Time Estimation. *Perception*. 1984; 14: 19–29. <https://doi.org/10.1068/p140019> PMID: 4069932
16. Gorn GJ, Chattopadhyay A, Sengupta J, Tripathi S. Waiting for the Web: How Screen Color Affects Time Perception. *J Marketing Res*. 2004; 41: 215–225. <https://doi.org/10.1509/jmkr.41.2.215.28668>
17. Katsuura T, Yasuda T, Shimomura Y, Iwanaga K. Effects of Monochromatic Light on Time Sense for Short Intervals. *J Physiol Anthropol*. 2007; 26: 95–100. <https://doi.org/10.2114/jpa2.26.95> PMID: 17435350
18. Shibasaki M, Masataka N. The color red distorts time perception for men, but not for women. *Sci Rep-uk*. 2014; 4: 5899. <https://doi.org/10.1038/srep05899> PMID: 25077928
19. Thönes S, Castell C von, Ifflinger J, Oberfeld D. Color and time perception: Evidence for temporal overestimation of blue stimuli. *Sci Rep-uk*. 2018; 8: 1688. <https://doi.org/10.1038/s41598-018-19892-z> PMID: 29374198
20. Yang P-L, Tsujimura S, Matsumoto A, Yamashita W, Yeh S-L. Subjective time expansion with increased stimulation of intrinsically photosensitive retinal ganglion cells. *Sci Rep-uk*. 2018; 8: 11693. <https://doi.org/10.1038/s41598-018-29613-1> PMID: 30076316
21. Treisman M. Temporal discrimination and the indifference interval: Implications for a model of the “internal clock”. *Psychological Monogr Gen Appl*. 1963; 77: 1. <https://doi.org/10.1037/h0093864> PMID: 5877542
22. Gibbon J, Church RM, Meck WH. Scalar Timing in Memory. *Ann Ny Acad Sci*. 1984; 423: 52–77. <https://doi.org/10.1111/j.1749-6632.1984.tb23417.x> PMID: 6588812
23. Goldstone S, Lhamon WT, Sechzer J. Light intensity and judged duration. *B Psychonomic Soc*. 1978; 12: 83–84. <https://doi.org/10.3758/bf03329633>
24. Casini L, Macar F. Effects of attention manipulation on judgments of duration and of intensity in the visual modality. *Mem Cognition*. 1997; 25: 812–818. <https://doi.org/10.3758/bf03211325> PMID: 9421567
25. Kinzuka Y, Sato F, Minami T, Nakauchi S. Effect of glare illusion-induced perceptual brightness on temporal perception. *Psychophysiology*. 2021. <https://doi.org/10.1111/psyp.13851> PMID: 34036604
26. Szabadi E. Modulation of physiological reflexes by pain: role of the locus coeruleus. *Frontiers Integr Neurosci*. 2012; 6: 94. <https://doi.org/10.3389/fnint.2012.00094> PMID: 23087627

27. Herbst K, Sander B, Milea D, Lund-Andersen H, Kawasaki A. Test–Retest Repeatability of the Pupil Light Response to Blue and Red Light Stimuli in Normal Human Eyes Using a Novel Pupillometer. *Front Neurol.* 2011; 2: 10. <https://doi.org/10.3389/fneur.2011.00010> PMID: 21442043
28. Pierre J Michel. Pupillometry: The psychology of the pupillary response. Hemisphere; 1977.
29. Suzuki TW, Kunitatsu J, Tanaka M. Correlation between Pupil Size and Subjective Passage of Time in Non-Human Primates. *J Neurosci.* 2016; 36: 11331–11337. <https://doi.org/10.1523/JNEUROSCI.2533-16.2016> PMID: 27807173
30. Kruijne W, Olivers CNL, Rijn H van. Neural Repetition Suppression Modulates Time Perception: Evidence From Electrophysiology and Pupillometry. *J Cognitive Neurosci.* 2021; 33: 1230–1252. https://doi.org/10.1162/jocn_a_01705 PMID: 34496395
31. Brainard DH. The Psychophysics Toolbox. *Spatial Vision.* 1997; 10: 433–436. <https://doi.org/10.1163/156856897x00357> PMID: 9176952
32. Pelli DG. The VideoToolbox software for visual psychophysics: transforming numbers into movies. *Spatial Vision.* 1997; 10: 437–442. <https://doi.org/10.1163/156856897x00366> PMID: 9176953
33. Kleiner M, Brainard D, Pelli D. What's new in Psychtoolbox-3? Pion Ltd. 2007.
34. Bone RA, Landrum JT. Heterochromatic flicker photometry. *Arch Biochem Biophys.* 2004; 430: 137–142. <https://doi.org/10.1016/j.abb.2004.04.003> PMID: 15369810
35. Pokorny J, Smith VC, Lutze M. Heterochromatic modulation photometry. *J Opt Soc Am.* 1989; 6: 1618. <https://doi.org/10.1364/josaa.6.001618> PMID: 2795287
36. Grondin S, Ouellet B, Roussel M-E. Benefits and Limits of Explicit Counting for Discriminating Temporal Intervals. *Can J Exp Psychology Revue Can De Psychologie Expérimentale.* 2004; 58: 1. <https://doi.org/10.1037/h0087436> PMID: 15072205
37. Mathôt S. A simple way to reconstruct pupil size during eye blinks. 2013. Available: <https://doi.org/10.6084/m9.figshare.688002>
38. Prins N, Kingdom FAA. Applying the Model-Comparison Approach to Test Specific Research Hypotheses in Psychophysical Research Using the Palamedes Toolbox. *Front Psychol.* 2018; 9: 1250. <https://doi.org/10.3389/fpsyg.2018.01250> PMID: 30083122
39. JASP-Team. JASP. 2020. Available: <https://jasp-stats.org/>
40. Ortega A, Navarrete G. Bayesian hypothesis testing: an alternative to null hypothesis significance testing (NHST) in psychology and social sciences. *Bayesian inference.* IntechOpen; 2017. <https://doi.org/10.5772/intechopen.70230>
41. Markwell EL, Feigl B, Zele AJ. Intrinsically photosensitive melanopsin retinal ganglion cell contributions to the pupillary light reflex and circadian rhythm. *Clin Exp Optom.* 2010; 93: 137–149. <https://doi.org/10.1111/j.1444-0938.2010.00479.x> PMID: 20557555
42. Mathot S. Pupillometry: Psychology, Physiology, and Function. *J Cognition.* 2018; 1. <https://doi.org/10.5334/joc.18> PMID: 31517190
43. Wardhani IK, Boehler CN, Mathôt S. The influence of pupil responses on subjective brightness perception. *Perception.* 2022; 030100662210947. <https://doi.org/10.1177/03010066221094757> PMID: 35491711
44. Bombeke K, Duthoo W, Mueller SC, Hopf J-M, Boehler CN. Pupil size directly modulates the feedforward response in human primary visual cortex independently of attention. *Neuroimage.* 2016; 127: 67–73. <https://doi.org/10.1016/j.neuroimage.2015.11.072> PMID: 26658931
45. Suzuki Y, Minami T, Nakauchi S. Pupil Constriction in the Glare Illusion Modulates the Steady-State Visual Evoked Potentials. *Neuroscience.* 2019; 416: 221–228. <https://doi.org/10.1016/j.neuroscience.2019.08.003> PMID: 31400489
46. Mathôt S, Fabius J, Heusden EV, Stigchel SV der. Safe and sensible preprocessing and baseline correction of pupil-size data. *Behav Res Methods.* 2018; 50: 94–106. <https://doi.org/10.3758/s13428-017-1007-2> PMID: 29330763
47. Watson AB, Yellott JI. A unified formula for light-adapted pupil size. *J Vision.* 2012; 12: 12–12. <https://doi.org/10.1167/12.10.12> PMID: 23012448
48. Wang C-A, Munoz DP. A circuit for pupil orienting responses: implications for cognitive modulation of pupil size. *Curr Opin Neurobiol.* 2015; 33: 134–140. <https://doi.org/10.1016/j.conb.2015.03.018> PMID: 25863645
49. Tabachnick BG, Fidell LS. *Using Multivariate Statistics*, 5th Edition. Using multivariate statistics, 5th ed. 2007.
50. Dienes Z. Using Bayes to get the most out of non-significant results. *Front Psychol.* 2014; 5: 781. <https://doi.org/10.3389/fpsyg.2014.00781> PMID: 25120503

51. Noulhiane M, Mella N, Samson S, Ragot R, Pouthas V. How emotional auditory stimuli modulate time perception. *Emotion*. 2007; 7: 697. <https://doi.org/10.1037/1528-3542.7.4.697> PMID: 18039036
52. Laeng B, Endestad T. Bright illusions reduce the eye's pupil. *Proc National Acad Sci*. 2012; 109: 2162–2167. <https://doi.org/10.1073/pnas.1118298109> PMID: 22308422
53. Salinas CS, Hermans S, Sandoval J, Smet KAG, Hanselaer P, Colombo E. Relationship between pupillary size, brightness, and photoreceptor responses for unrelated self-luminous stimuli at low photopic light levels. *Color Res Appl*. 2020. <https://doi.org/10.1002/col.22546>
54. Binda P, Pereverzeva M, Murray SO. Pupil constrictions to photographs of the sun. *J Vision*. 2013; 13: 8–8. <https://doi.org/10.1167/13.6.8> PMID: 23685391
55. Zavagno D, Tommasi L, Laeng B. The Eye Pupil's Response to Static and Dynamic Illusions of Luminosity and Darkness. *I-perception*. 2017; 8: 2041669517717754. <https://doi.org/10.1177/2041669517717754> PMID: 28835810
56. Suzuki Y, Minami T, Laeng B, Nakauchi S. Colorful glares: Effects of colors on brightness illusions measured with pupillometry. *Acta Psychol*. 2019; 198: 102882. <https://doi.org/10.1016/j.actpsy.2019.102882> PMID: 31288107
57. Eagleman DM, Pariyadath V. Is subjective duration a signature of coding efficiency? *Philosophical Transactions Royal Soc B Biological Sci*. 2009; 364: 1841–1851. <https://doi.org/10.1098/rstb.2009.0026> PMID: 19487187
58. Noguchi Y, Kakigi R. Time Representations Can Be Made from Nontemporal Information in the Brain: An MEG Study. *Cereb Cortex*. 2006; 16: 1797–1808. <https://doi.org/10.1093/cercor/bhj117> PMID: 16421328
59. Näätänen R, Syssoeva O, Takegata R. Automatic time perception in the human brain for intervals ranging from milliseconds to seconds. *Psychophysiology*. 2004; 41: 660–663. <https://doi.org/10.1111/j.1469-8986.2004.00182.x> PMID: 15189489
60. Lewis PA, Miall RC. Brain activation patterns during measurement of sub- and supra-second intervals. *Neuropsychologia*. 2003; 41: 1583–1592. [https://doi.org/10.1016/s0028-3932\(03\)00118-0](https://doi.org/10.1016/s0028-3932(03)00118-0) PMID: 12887983