



Peripheral odontogenic myxoma in a 12-year-old girl: a rare entity

Sampada Kanitkar¹, Mamata Kamat¹, Sridevi Tamagond², Aniruddha Varekar¹, Uma Datar¹

Departments of ¹Oral Pathology and Microbiology and ²Pedodontics,
Bharati Vidyapeeth Deemed University Dental College and Hospital, Sangli, India

Abstract (J Korean Assoc Oral Maxillofac Surg 2017;43:178-181)

Peripheral odontogenic myxoma is a rare odontogenic tumor representing an extra osseous counterpart of central odontogenic myxoma. It is commonly seen in gingiva between the 3rd and 4th decades of life and appears predominantly in females. Compared to central odontogenic myxoma, it is a less aggressive, slow-growing lesion with a low recurrence rate. However, close postoperative follow-up is required because of the unlimited growth potential of incompletely removed lesions. It shares many features with other soft tissue myxoid proliferations occurring in the oral cavity and hence needs to be differentiated from them. Very few cases of peripheral odontogenic myxomas have been reported and, to the best of our knowledge, no case has been reported in a pediatric patient. We present an unusual case of peripheral odontogenic myxoma occurring in a 12-year-old girl located in the anterior mandibular gingiva, with an emphasis on differential diagnosis.

Key words: Myxoma, Odontogenic tumours, Gingiva, Mandible, Mast cells

[paper submitted 2016. 5. 4 / revised 2016. 7. 25 / accepted 2016. 8. 3]

I. Introduction

Odontogenic myxomas are relatively rare benign odontogenic tumors that arise from the ectomesenchyme of the tooth-forming apparatus and are composed of spindle shaped/rounded/angular cells embedded in abundant mucoid stroma. Odontogenic myxomas can be categorized into central and peripheral variants¹⁻⁴. Very few case reports of peripheral odontogenic myxomas (POMs) are available in the literature. Clinically and histologically, POMs resemble many other soft tissue lesions. Hence, recognizing and diagnosing POMs is necessary for the careful planning of conservative treatment and follow-up to rule out intraosseous extension⁵. This article presents a rare case of POM in a pediatric patient with a special emphasis on differential diagnosis.

Mamata Kamat

Department of Oral Pathology and Microbiology, Bharati Vidyapeeth Deemed University Dental College and Hospital, Wanlesswadi, Miraj Road, Sangli 416414, India

TEL: +91-8412914777 FAX: +91-2332211324

E-mail: kmamata@yahoo.com

ORCID: <http://orcid.org/0000-0003-0167-531X>

©This is an open-access article distributed under the terms of the Creative Commons Attribution Non-Commercial License (<http://creativecommons.org/licenses/by-nc/4.0/>), which permits unrestricted non-commercial use, distribution, and reproduction in any medium, provided the original work is properly cited.

Copyright © 2017 The Korean Association of Oral and Maxillofacial Surgeons. All rights reserved.

II. Case Report

A 12-year-old girl presented with a growth on the mandibular gingiva between tooth #31 and #32 (Fig. 1. A) that appeared three months prior. It was 1×1.5 cm in size, firm in consistency, and adherent to the mandibular gingiva but not fixed. The overlying mucosa was normal in color and texture.(Fig. 1. A) Radiologically, the intraoral periapical view showed drifting of tooth #31 and #32 without any erosion of alveolar bone.(Fig. 1. B) Based upon the clinical and radiographic findings, the lesion was provisionally diagnosed as a pyogenic granuloma. The lesion was completely excised and curetted under local anesthesia.

Gross examination of the excised tissue revealed a soft-to-firm grayish white pedunculated mass. Microscopically, an H&E stained section showed well-circumscribed lesional tissue separated from the overlying stratified squamous parakeratinized epithelium by fibrous tissue. The lesional tissue consisted of relatively acellular loose myxoid stroma with scattered spindle-to-stellate-shaped cells and many delicate proliferating capillaries. A minimal amount of collagen fibers was seen.(Fig. 2. A) The presence of numerous mast cells (MCs) was confirmed by toluidine blue staining.(Fig. 2. B) The lesional tissue was strongly positive for reticulin staining and showed alcinophilia.(Fig. 2. C, 2. D, respectively)

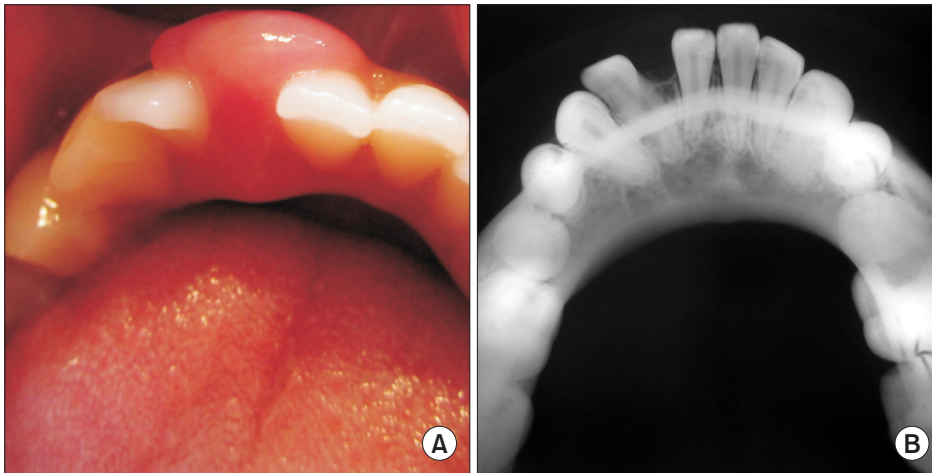


Fig. 1. A. Clinical photograph showing the gingival mass extending buccolingually between teeth #31 and #32. B. Occlusal radiograph showing drifting of #31 and #32 without bone involvement.

Sampada Kanitkar et al: Peripheral odontogenic myxoma in a 12-year-old girl: a rare entity. J Korean Assoc Oral Maxillofac Surg 2017

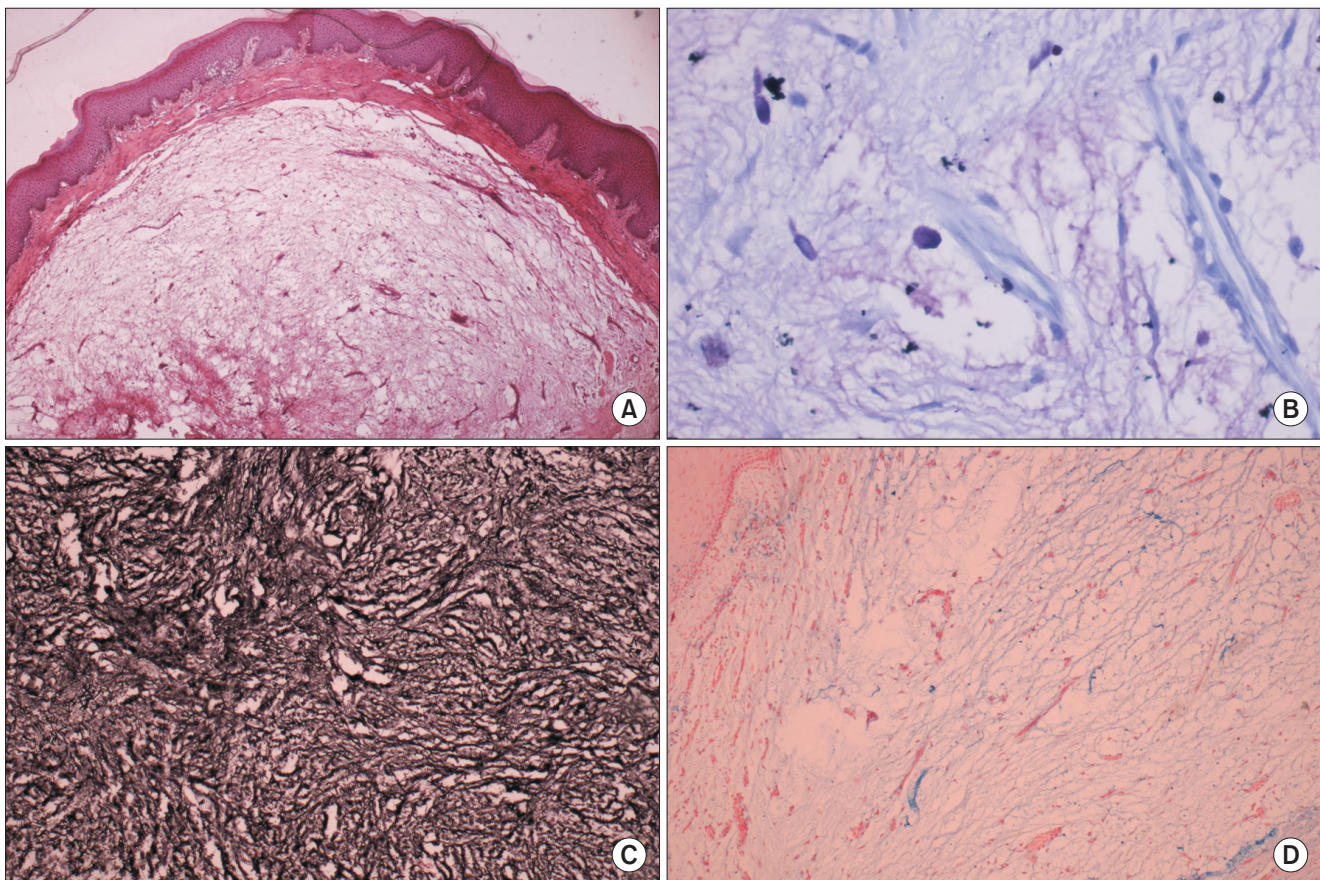


Fig. 2. A. H&E stained section (×10) showing loose myxomatous lesional tissue separated from the overlying stratified epithelium by a fibrous capsule. B. Toluidine blue-stained section (×40) showing mast cells in myxoid stroma. C. Reticulin-stained section (×10) showing strong positivity. D. Lesional tissue showing reactivity to Alcian blue staining (×10).

Sampada Kanitkar et al: Peripheral odontogenic myxoma in a 12-year-old girl: a rare entity. J Korean Assoc Oral Maxillofac Surg 2017

Lesional tissue showed vimentin positivity and S-100 negativity. Based on these findings, a final diagnosis of POM was established. After excision of the lesion, the migrated teeth reverted to their normal position. The two-year follow-up period was uneventful.

III. Discussion

Odontogenic myxoma is a mesenchymal lesion of uncertain histogenesis that microscopically mimics dental pulp or follicular connective tissue^{1,2}. Odontogenic myxomas are

classified as central/intraosseous and peripheral/extra osseous variants^{2,3}.

POM is a very rare lesion with a reported incidence less than that of other peripheral odontogenic tumors⁴; data on POM clinicopathologic features remain scarce⁴.

Relevant literature suggests that peripheral myxomas of the intraoral tissues should be named POMs because soft tissue myxomas are usually seen extrafacially in skeletal muscles, dermal and subcutaneous tissues and do not occur in the oral cavity⁵.

Several theories have been put forth regarding the pathogenesis of POM. One hypothesis states that altered primitive fibroblast/myofibroblasts produce excess mucopolysaccharides. And most of these cells are incapable of forming mature collagen. Other authors have suggested an origin derived from mesenchymal cells, such as dental papilla, dental follicle, or periodontal ligament^{5,6}.

POMs most commonly present clinically as pedunculated or sessile, painless, exophytic masses located in the gingiva^{4,5}. Most of the reported cases of POMs occur in 4th to 6th decade of life^{4,5,7-10}. In contrast, our case was found in a 12-year-old girl. POMs show a predilection for females and most reported cases have occurred in the maxilla^{2,4,5,7-9}, with only a few cases including the present case reported in the mandible.

The size of the lesions ranges from one centimeter to several centimeters, with two reported cases being very large⁴.

Radiologically, some of the reported cases of POMs showed displacement of the associated teeth without root resorption. Localized erosion of alveolar bone was also observed in some cases^{4,5,8}. In our case, the lesion caused tooth displacement without any bony erosion.

Clinically, POMs may mimic similar lesions like peripheral odontogenic lesions, peripheral giant cell granuloma, fibroma, lipoma, pyogenic granuloma, giant cell fibroma, traumatic fibroma, neurofibroma, focal oral mucinosis and other malignant and metastatic connective tissue tumors^{2,4,5,7,10,11}. Histological examination is necessary to differentially diagnose these lesions.

POMs are poorly circumscribed myxoid proliferations outside the bone. They show little encapsulation and their rapid growth may be due to an accumulation of mucoid ground substance mimicking an aggressive neoplasm. The neoplasm is composed of haphazardly arranged stellate, spindle shaped and round cells in a loose myxoid stroma. Typically, a delicate vascular network and stellate fibroblasts are diagnostic of POM⁴. Odontogenic epithelial rests may not be obvious in most lesions and are not necessary for establishing a final

diagnosis⁵.

Interestingly, in our case of POM, we found a scattered distribution of MCs. MCs may also play an important role in the growth and expansion of odontogenic tumors and their presence is associated with poor prognosis^{12,13}.

It has been suggested that the MCs are associated with remodeling of the extracellular matrix in neoplastic alterations as they produce and release proteolytic enzymes favoring the migration of both endothelial and tumor cells as well as the release of angiogenic factors stored within the stromal tissue, leading to a higher degree of aggressiveness of odontogenic myxoma^{12,14}. However, the presence of MCs has not been reported previously in POMs.

Histologically, the differential diagnosis of POM should include myxoid neurofibroma, myxoid chondrosarcoma, and myxoid liposarcoma, chondromyxoid fibroma, myxoid chondrosarcoma, a myxoid change in fibrosarcoma, botryoid type embryonal rhabdomyosarcoma and pleomorphic adenoma⁴. Awareness of the potential diagnostic pitfalls as well as careful evaluation of the clinical, radiological and characteristic histopathologic findings can narrow down the differential diagnosis⁷. Nerve sheath myxoma typically exhibits lobulated mucoid tissue containing stellate and spindle shaped cells, and condensed connective tissue representing perineurium surrounding the lesion. MCs are characteristically present in this lesion¹¹. Oral focal mucinosis is clinically indistinguishable from other similar lesions; however, the connective tissue is alcinophilic and lacks reticulin fibres¹⁵. Our case showed strong positivity for reticulin staining, thus ruling out oral focal mucinosis.

In our case, we confirmed the results of other studies with respect to S-100 negativity and vimentin positivity. The diagnostic value of immunohistochemistry (IHC) in odontogenic myxomas is limited as the neoplastic cells share antigenic characteristics with many non-odontogenic myxoid proliferations and a specific marker for cells of dental ectomesenchymal origin is lacking⁴. However, IHC findings help to differentiate these lesions from other myxoid lesions.

If left untreated, POMs have unlimited growth potential. POMs without bone destruction are treated by simple excision while those with bone destruction require excision and marginal curettage. POM has a much lower recurrence rate (3%-8%) than central odontogenic myxoma (10%-33%). Therefore, a carefully planned conservative enucleation or semi-radical approach is justified^{2,4,5,16}. Close follow-up of these lesions is necessary to rule out intraosseous extension and recurrence.

We conclude that special stains and IHC are valuable tools for the differential diagnosis of these lesions. Overtreatment of POMs should be avoided through the use of definitive diagnosis, especially in pediatric patients, as it may affect the alignment and eruption of teeth. The role of MCs in POMs needs to be further evaluated, since POMs with MCs have not been reported previously.

Conflict of Interest

No potential conflict of interest relevant to this article was reported.

Acknowledgements

The authors would like to thank Bharati Vidyapeeth Deemed University Dental College and Hospital, Sangli, for the necessary support. The authors are also thankful to Dr. Jaydeep Pol, M.D. Pathology, Mahatma Gandhi Cancer Institute, Miraj, for IHC analysis.

ORCID

Sampada Kanitkar, <http://orcid.org/0000-0001-9269-4596>

Mamata Kamat, <http://orcid.org/0000-0003-0167-531X>

Sridevi Tamagond, <http://orcid.org/0000-0002-6924-8341>

Aniruddha Varekar, <http://orcid.org/0000-0002-5476-9267>

Uma Datar, <http://orcid.org/0000-0002-0930-8875>

References

1. Brannon RB. Central odontogenic fibroma, myxoma (odontogenic myxoma, fibromyxoma), and central odontogenic granular cell tumor. *Oral Maxillofac Surg Clin North Am* 2004;16:359-74.
2. Jain VK, Reddy SN. Peripheral odontogenic myxoma of maxillary gingiva: a rare clinical entity. *J Indian Soc Periodontol* 2013;17:653-6.
3. Reichart PA, Philipsen HP. *Odontogenic tumors and allied lesions*. London: Quintessence Publishing; 2004:189-96.
4. Raubenheimer EJ, Noffke CE. Peripheral odontogenic myxoma: a review of the literature and report of two cases. *J Maxillofac Oral Surg* 2012;11:101-4.
5. Aytac-Yazicioglu D, Eren H, Görgün S. Peripheral odontogenic myxoma located on the maxillary gingiva: report of a case and review of the literature. *Oral Maxillofac Surg* 2008;12:167-71.
6. Mehendiratta M, Rehani S, Solomon MC. The histological spectrum of myxoma, myxofibroma/fibromyxoma and odontogenic fibroma: "a chicken and egg situation". *IOSR J Dent Med Sci* 2012;1:3-5.
7. Perrotti V, Rubini C, Fioroni M, Piattelli A. Soft tissue myxoma: report of an unusual case located on the gingiva. *J Clin Periodontol* 2006;33:76-8.
8. Shimoyama T, Horie N, Kato T, Tojo T, Nasu D, Kaneko T, et al. Soft tissue myxoma of the gingiva: report of a case and review of the literature of soft tissue myxoma in the oral region. *J Oral Sci* 2000;42:107-9.
9. Whitt J, Barker B, Cobb C. Peripheral odontogenic myxoma. *Oral Surg Oral Med Oral Pathol Oral Radiol Endod* 2005;100:187-8.
10. Ramraj PN, Sah SP. Myxoma of oral soft tissue. *J Nepal Med Assoc* 2001;40:274-6.
11. Regezi JA, Sciubba JJ, Jordan RCK. *Oral pathology: clinical pathologic correlations*. 5th ed. St. Louis: Saunders Elsevier; 2008:272-3.
12. de Assis Caldas Pereira F, Gurgel CA, Ramos EA, Vidal MT, Pinheiro AL, Jurisic V, et al. Distribution of mast cells in benign odontogenic tumors. *Tumour Biol* 2012;33:455-61.
13. Mosqueda-Taylor A. New findings and controversies in odontogenic tumors. *Med Oral Patol Oral Cir Bucal* 2008;13:E555-8.
14. Martínez-Mata G, Mosqueda-Taylor A, Carlos-Bregni R, de Almeida OP, Contreras-Vidaurre E, Vargas PA, et al. Odontogenic myxoma: clinico-pathological, immunohistochemical and ultrastructural findings of a multicentric series. *Oral Oncol* 2008;44:601-7.
15. Barnes L, Eveson JW, Reichart P, Sidransky D. *World Health Organization classification of tumors. Pathology and genetics of head and neck tumours*. Lyon: IARC Press; 2005:197.
16. Choi SH, Jeong JC, Song MS, Seo JH, Kim SB, Jun CH. A case of odontogenic myxoma related to both impacted canine teeth in the mandible. *J Keoran Oral Maxillofac Surg* 2003;29:64-7.