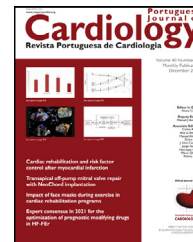




Since January 2020 Elsevier has created a COVID-19 resource centre with free information in English and Mandarin on the novel coronavirus COVID-19. The COVID-19 resource centre is hosted on Elsevier Connect, the company's public news and information website.

Elsevier hereby grants permission to make all its COVID-19-related research that is available on the COVID-19 resource centre - including this research content - immediately available in PubMed Central and other publicly funded repositories, such as the WHO COVID database with rights for unrestricted research re-use and analyses in any form or by any means with acknowledgement of the original source. These permissions are granted for free by Elsevier for as long as the COVID-19 resource centre remains active.



## ORIGINAL ARTICLE

# The predictive value of epicardial fat volume for clinical severity of COVID-19



Mehmet Akif Erdöl<sup>a,\*</sup>, Fatma Civelek Eser<sup>b</sup>, Abdullah Nabi Aslan<sup>a</sup>, Mehmet Erdoğan<sup>a</sup>,  
 Adalet Altunsoy Aypak<sup>b</sup>, Muhammed Said Beşler<sup>c</sup>, Ayşe Kaya Kalem<sup>b</sup>,  
 Ahmet Göktuğ Ertem<sup>a</sup>, Hatice Rahmet Güner<sup>b</sup>

<sup>a</sup> Cardiology Unit; Ministry of Health, Ankara City Hospital, Turkey

<sup>b</sup> Department of Infectious Diseases and Clinical Microbiology, Ankara Yıldırım Beyazıt University, Faculty of Medicine, Turkey

<sup>c</sup> Radiology Unit, Ministry of Health, Ankara City Hospital, Turkey

Received 14 January 2021; accepted 24 May 2021

Available online 29 April 2022

## KEYWORDS

COVID-19;  
 Epicardial fat  
 volume;  
 Computed  
 tomography;  
 C-reactive protein;  
 Interleukin-6;  
 Prognosis

## Abstract

**Introduction:** Epicardial adipose tissue serves as a source of inflammatory cytokines and mediators. Cytokine storm is an important cause of morbidity and mortality in coronavirus disease 2019 (COVID-19).

**Objectives:** To investigate the association between epicardial fat volume (EFV), inflammatory biomarkers and clinical severity of COVID-19.

**Methods:** This retrospective study included 101 patients who were infected with COVID-19. Serum inflammatory biomarkers including C-reactive protein (CRP), interleukin-6 (IL-6), procalcitonin (PCT) and ferritin levels were measured. Computed tomography images were analyzed and semi-automated measurements for EFV were obtained. The primary composite endpoint was admission to the intensive care unit (ICU) or death.

**Results:** The primary composite endpoint occurred in 25.1% (n=26) of patients (mean age 64.8±14.8 years, 14 male). A total of 10 patients died. EFV, CRP, PCT, ferritin and IL-6 levels were significantly higher in ICU patients. Moreover, a positive correlation was determined between EFV and CRP (r: 0.494, p<0.001), PCT (r: 0.287, p=0.005), ferritin (r: 0.265, p=0.01) and IL-6 (r: 0.311, p=0.005). On receiver operating characteristic analysis, patients with EFV >102 cm<sup>3</sup> were more likely to have severe complications. In multivariate logistic regression analysis, EFV independently predicted admission to the ICU at a significant level (OR: 1.02, 95% CI: 1.01-1.03, p=0.025).

\* Corresponding author.

E-mail address: [akiferdol@gmail.com](mailto:akiferdol@gmail.com) (M.A. Erdöl).

<https://doi.org/10.1016/j.repc.2021.05.016>

0870-2551/© 2022 Sociedade Portuguesa de Cardiologia. Published by Elsevier España, S.L.U. This is an open access article under the CC BY-NC-ND license (<http://creativecommons.org/licenses/by-nc-nd/4.0/>).

**Conclusion:** EFV and serum CRP, IL-6, PCT and ferritin levels can effectively assess disease severity and predict the outcome in patients with COVID-19. EFV is an independent predictor of admission to the ICU in hospitalized COVID-19 patients.

© 2022 Sociedade Portuguesa de Cardiologia. Published by Elsevier España, S.L.U. This is an open access article under the CC BY-NC-ND license (<http://creativecommons.org/licenses/by-nc-nd/4.0/>).

## PALAVRAS-CHAVE

COVID-19;  
Volume adiposo epicárdico;  
TC;  
Proteína-C reativa;  
Interleucina-6;  
Prognóstico

## Valor preditivo do volume de gordura epicárdica em relação à gravidade clínica da COVID-19

### Resumo

**Introdução:** O tecido adiposo epicárdico é fonte de citocinas inflamatórias e mediadores. A tempestade de citocinas é uma importante causa de morbidade e mortalidade na doença coronavírus 2019 (COVID-19).

**Objetivos:** Investigar a associação entre volume adiposo epicárdico (VAE), biomarcadores inflamatórios e gravidade clínica da COVID-19.

**Métodos:** Este estudo retrospectivo incluiu 101 doentes infetados com COVID-19. Foram avaliados biomarcadores inflamatórios séricos, incluindo os níveis de proteína C-reativa (PCR), de interleucina-6 (IL-6), de procalcitonina (PCT) e de ferritina. Foram analisadas imagens de tomografia computadorizada (TC) e foram obtidas medições semi-automáticas do VAE. O *endpoint* primário composto foi a admissão na unidade de cuidados intensivos (UCI) ou morte.

**Resultados:** O *endpoint* primário ocorreu em 25,1% (n=26) dos doentes (idade média 64,8±14,8 anos, 14 homens). Um total de 10 doentes morreu. Os níveis de VAE, PCR, PCT, ferritina e IL-6 foram significativamente superiores nos doentes internados na UCI. Além disso, verificou-se uma correlação positiva entre o VAE e a PCR (r: 0,494, p<0,001), PCT (r: 0,287, p=0,005), ferritina (r: 0,265, p=0,01) e IL-6 (r: 0,311, p=0,005). Na análise de regressão logística multivariada, os doentes com VAE>102 cm<sup>3</sup> tinham maior probabilidade de ter complicações graves.

**Conclusão:** O VAE e os níveis séricos de PCR, IL-6, PCT e ferritina podem avaliar a gravidade da doença e prever o resultado em doentes com COVID-19. O VAE constitui um fator preditivo na admissão dos doentes hospitalizados com COVID-19 numa UCI.

© 2022 Sociedade Portuguesa de Cardiologia. Publicado por Elsevier España, S.L.U. Este é um artigo Open Access sob uma licença CC BY-NC-ND (<http://creativecommons.org/licenses/by-nc-nd/4.0/>).

## Introduction

Coronavirus disease 2019 (COVID-19) is an ongoing pandemic that has already affected millions of people worldwide and is associated with significant morbidity and mortality. It is caused by severe acute respiratory syndrome coronavirus 2 (SARS-CoV-2) infection and first occurred in Wuhan in December 2019.<sup>1</sup> On January 30, 2020, the World Health Organization (WHO) declared COVID-19 a Public Health Emergency of International Concern and on March 11 declared it a pandemic. As of May 6, a total of 3 588 773 people in 208 countries were reported to have COVID-19, leading to more than 247 500 deaths. Early reports from China and Italy indicate that SARS-CoV-2 causes illness of varying degrees of severity.<sup>2,3</sup> It has a wide clinical spectrum, including asymptomatic infection, mild respiratory disease, severe pneumonia with acute respiratory failure and even death. An excessive inflammatory response to SARS-CoV-2 is thought to be one of the major causes of disease severity and death in patients with COVID-19.<sup>4</sup> Evidence suggests that cytokine release syndrome (CRS) can play a major role in severe COVID-19.<sup>5</sup> Inflammatory cytokines and chemokines

including interleukin-6 (IL-6), interleukin-1 beta (IL-1 $\beta$ ), induced protein 10 and monocyte chemoattractant protein-1 (MCP-1) are significantly elevated in COVID-19 patients, and some were more commonly seen in severe than in non-severe patients.<sup>5</sup>

Epicardial adipose tissue (EAT) is a fat storage tissue located beneath the pericardium, representing approximately 15% of the cardiac weight.<sup>6,7</sup> It is a visceral fat that secretes inflammatory cytokines and mediators like MCP-1, IL-6, and tumor necrosis factor alpha (TNF- $\alpha$ ).<sup>8</sup> It can be measured with different imaging techniques: transthoracic echocardiography, multislice computed tomography (MSCT) and magnetic resonance imaging.<sup>9,10</sup> Computed tomography (CT) is a reliable and reproducible method for quantification of epicardial fat volume (EFV) independent of cardiac cycle phase.<sup>11,12</sup> Chest CT is a cornerstone in the assessment of patients diagnosed with COVID-19. Among recent developments in non-invasive imaging methods, non-gated chest CT was shown to correlate with values measured by coronary CT angiography.<sup>2,13</sup>

C-reactive protein (CRP), procalcitonin (PCT), ferritin and IL-6 are known inflammatory biomarkers and their

levels have previously been reported to correlate with disease severity in COVID-19 patients.<sup>14,15</sup> However, there are no data about the association between EFV and disease severity, nor on the correlation with these inflammatory biomarkers. Recently, Zhao emphasized the role of epicardial fat in overweight patients, who have worse prognosis during COVID-19 infection.<sup>16</sup>

Early diagnosis of serious illness is critical to early classification and improvement of patients' prognosis. Additionally, the early identification of patients who will become severely ill could facilitate the allocation of limited medical resources to patients in need of aggressive treatment. Therefore, further research is urgently needed on early diagnosis and prognosis. In this paper, we aimed to assess the association between EFV (measured by a 128-slice MSCT scanner), inflammatory biomarkers and prognosis of COVID-19 patients.

## Methods

### Study design and participants

In this retrospective, single-center study, a total of 101 consecutive patients were enrolled who were diagnosed with COVID-19. The hospital in which the study was conducted is a designated, large-volume hospital capable of receiving severe COVID-19 patients. The diagnosis of COVID-19 was made according to WHO interim guidance and confirmed by RNA detection of SARS-CoV-2 in an on-site clinical laboratory.<sup>17</sup> In accordance with the report of the WHO-China Joint Mission on COVID-19,<sup>18</sup> patients with COVID-19 were divided into mild (laboratory confirmed, without pneumonia), moderate (laboratory confirmed and with pneumonia), severe (dyspnea, respiratory frequency  $\geq 30$ /min, blood oxygen saturation  $\leq 93\%$ ,  $\text{PaO}_2/\text{FiO}_2$  ratio  $< 300$ , and/or lung infiltrates  $> 50\%$  of the lung field within 24–48 h) and critical (respiratory failure requiring mechanical ventilation, shock or other organ failure that requires intensive care). Severe and critical patients were admitted to the intensive care unit (ICU), whereas patients in the mild to moderate group were admitted to the ward.<sup>18</sup> A combination of hydroxychloroquine (HCQ), azithromycin and favipiravir was used for the treatment of severe COVID-19 cases, whereas only HCQ was used for mild to moderate cases. The study was approved by the hospital's ethics committee, which waived the requirement for written informed consent.

### Data collection and analysis

A doctor and a nurse were responsible for data entry into a computerized database and tracked these data daily. The data were also reviewed by a team of physicians who treat patients with COVID-19. Demographic characteristics (gender and age), comorbidities (chronic obstructive pulmonary disease [COPD], hypertension, diabetes, coronary artery disease [CAD], cerebrovascular disease and chronic kidney disease), clinical manifestations, laboratory findings, treatment and outcomes (discharge/death) were extracted from electronic medical records using a standardized data collection form.

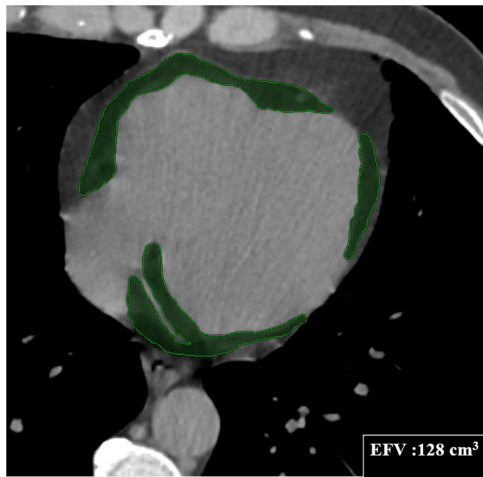
Routine blood examinations included complete blood count (CBC), coagulation profile, serum biochemical tests (including renal and liver function, creatine kinase, lactate dehydrogenase and electrolytes), myocardial enzymes, CRP, PCT, serum ferritin, IL-6, D-dimer and arterial blood gases (lactate and  $\text{PaO}_2/\text{FiO}_2$  ratio) were collected at admission. Peripheral venous blood samples were obtained from a large antecubital vein on admission. Total CBC (Sysmex K-1000, Sysmex Corporation, Kobe, Japan) and blood chemistry parameters (Roche Diagnostics, Tokyo, Japan) were determined at the hospital's biochemistry laboratory. Blood samples were placed in standardized EDTA-containing tubes for total CBC tests and measurements were performed immediately after blood sampling. Serum CRP levels were measured by immune nephelometry (NFL BN-II; Siemens Dade Behring). PCT was determined using a Biomérieux Mini VIDAS automatic fluorescence immunoanalyzer. Serum ferritin levels were detected by electrochemiluminescence (Cobas E601, Roche), as was IL-6, using the corresponding reagent. D-dimer was quantitatively determined using a Sysmax CS-5100 coagulation analyzer. Chest radiographs and CT scans were also performed for all inpatients.

Data on all treatment measures, including antibiotic, antiviral, glucocorticoid and intravenous immunoglobulin therapy and respiratory support, were acquired during hospitalization. Throat swab samples were collected from all suspected patients at admission and laboratory confirmation of SARS-CoV-2 was performed using real-time reverse transcription polymerase chain reaction according to the manufacturer's protocol (Beijing Genomics Institute and GeneDx Biotechnology Co. Ltd.). Repeated tests for SARS-CoV-2 were performed in confirmed patients to verify viral clearance before hospital discharge. The criteria for discharge were absence of fever for at least three days, clinical improvement of respiratory symptoms and two throat swab samples negative for SARS-CoV-2 RNA obtained at least 24 h apart.

### Analysis of epicardial fat volume by computed tomography

For patients referred to the hospital with suspected COVID-19, MSCT examination was carried out at the time of admission. All imaging was performed using a 128-slice scanner (GE Revolution Evo, USA) in supine position during end-inspiration. A low-dose CT protocol was applied with the following scanning parameters: gantry rotation time 0.4 s, pitch 0.98, table speed 39.3 mm/rotation, 20 mA, 120 kVp, and a  $300 \times 300$  matrix. CARE Dose 4D and CARE kV scanning parameters were off. A 1.25 mm slice thickness and 1.2 mm reconstruction interval were used for sagittal and coronal image reconstruction. After each CT, passive air ventilation was performed for at least 30 min and machine surfaces were disinfected with ethanol and didecyldimethylammonium chloride.

DICOM data were transferred to a picture archiving and communicating system. Then, two expert radiologists independently interpreted the images and a final decision was reached by consensus. Both radiologists were blinded to laboratory data, clinical features, and patients' diagnosis. In



**Figure 1** Computed tomography volumetric measurement of epicardial fat volume (EFV) in transaxial view.

the event of disagreement, the opinion of a third radiologist was used. All CT images were viewed in axial, sagittal and coronal planes. EFV was measured with a quantitative semi-automated procedure using the postprocessing software Advantage Workstation 4.7 (GE Healthcare Revolution, USA). Epicardial boundaries were manually traced to segment fat in the epicardium on axial images obtained from the pulmonary artery bifurcation to the lowest slice with a detectable pericardium (Figure 1). A CT attenuation threshold between -200 and -30 Hounsfield units was used to isolate epicardial fat.

### Statistical analysis

All analyses were carried out using IBM SPSS Statistics for Macintosh, version 24.0 (IBM Corp., Armonk, New York, USA). The one-sample Kolmogorov-Smirnov test was used to assess the distribution of numerical variables. Categorical data were presented as counts (percentages), while continuous data were presented as mean  $\pm$  standard deviation and median (interquartile range). The Student's t test was applied to numerical data that conformed to a normal distribution, and the Mann-Whitney U test was applied for skewed distributed variables. The chi-square test was used for categorical variables. For correlation analyses regarding EFV, Pearson's and Spearman's correlation analysis was used for data with normal and skewed distribution, respectively. Receiver operating characteristic (ROC) curve analysis was conducted to determine the cut-off values for the sensitivity and specificity of EFV in predicting ICU admission. Independent predictors of clinically severe COVID-19 were determined using logistic regression analysis. Variables that might be confounding factors or established risk factors for ICU admission in patients with COVID-19 such as diabetes, HT, CAD, COPD and EFV were included in logistic regression analyses. The effect of each variable on ICU admission was measured in univariate and multivariate analyses. A two-tailed p value of  $<0.05$  was defined as statistically significant.

**Table 1** Comparison of baseline characteristics of COVID-19 patients admitted to the ward and to the intensive care unit.

Variable	Ward (n=75)	ICU (n=26)	p
Age, years	50.6 $\pm$ 15.8	64.8 $\pm$ 14.8	<0.001
Male, n (%)	45 (60)	14 (54)	0.583
BMI, kg/m <sup>2</sup>	27.1	26.7	0.810
Diabetes, n (%)	17 (23)	7 (27)	0.660
Hypertension, n (%)	15 (20.0)	12 (46)	0.009
CAD, n (%)	4 (5)	6 (23)	0.009
COPD, n (%)	2 (3)	5 (19)	0.004
Smoking n (%)	6 (8)	1 (4)	0.472
ICU stay, days	-	8.5 (5-13)	-
Discharge time, days	12 (9-15)	17.5 (12-25)	<0.001
Intubated, n (%)	0 (0)	11 (42)	<0.001
Mortality, n (%)	0 (0)	9 (36)	<0.001

BMI: body mass index; CAD: coronary artery disease; COPD: chronic obstructive pulmonary disease; ICU: intensive care unit.

## Results

### Baseline characteristics

A total of 101 patients infected with SARS-CoV-2 were retrospectively enrolled in our study. The primary composite endpoint (admission to the ICU or death) was reached in 26 (25.1%) patients. Patients' demographic and baseline clinical features are presented in Table 1. According to these features, participants were divided into two groups: those admitted to the ICU and those admitted to the ward. Patients in the ICU were significantly older (64.8 $\pm$ 14.8 vs. 50.6 $\pm$ 15.8 years,  $p<0.001$ ) and had more comorbidities – hypertension (46% vs. 20%,  $p=0.009$ ), CAD (23% vs. 5%,  $p=0.009$ ) and COPD (19% vs. 3%,  $p=0.004$ ) – than those admitted to the ward. Other characteristics including gender, body mass index, smoking and diabetes showed no significant differences between the two groups. A total of 10 (38%) deaths occurred among the ICU patients. The mean age of patients who died was 71.9 $\pm$ 14.3 years (range 44-90 years) and most were male ( $n=6$ ). However, death was not observed among the 75 patients admitted to the ward. In the ICU, noninvasive ventilation was used in 15 patients (57%) and 11 patients (42%) were intubated.

### Laboratory findings

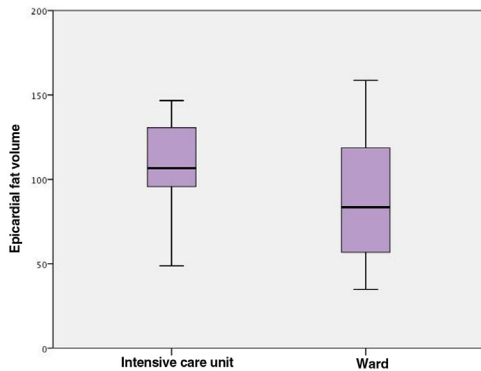
At admission, patients admitted to the ICU had significantly lower levels of total protein and albumin, hematocrit and lymphocyte count, but higher glucose, urea, aspartate aminotransferase, troponin I, D-dimer levels and white blood cell and neutrophil count compared with those admitted to the ward (Table 2). When inflammatory biomarkers were analyzed, CRP (133 vs. 12.4 g/l,  $p<0.001$ ), IL-6 (45.4 vs. 8.8 pg/ml,  $p<0.001$ ), PCT (0.14 vs. 0.05  $\mu$ g/l,  $p=0.001$ ) and ferritin (432 vs. 172  $\mu$ g/l,  $p<0.001$ ) levels were also significantly higher in patients admitted to the ICU than those in the ward. Moreover, patients admitted to the ICU had significantly larger EFV (115.1 $\pm$ 44.0 vs. 94.3 $\pm$ 45.5 cm<sup>3</sup>,  $p=0.037$ ) than those admitted to the ward (Figure 2). Table 3 shows

**Table 2** Comparison of laboratory findings of COVID-19 patients admitted to the ward and to the intensive care unit.

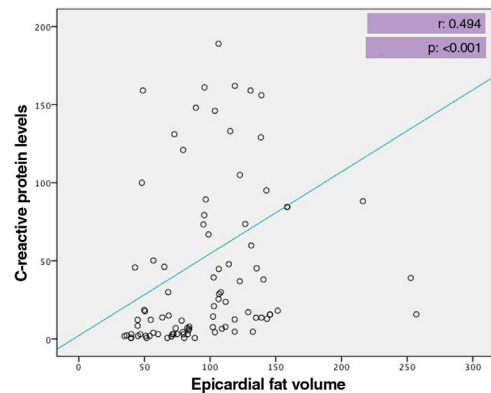
Variable	Ward (n=75)	ICU (n=26)	p
Glucose, mg/dl	110±32	129±39	0.035
Urea, mg/dl	30 (24-37)	37 (30-54)	0.006
Creatinine, mg/dl	0.88 (0.75-1.04)	1.01 (0.82-1.15)	0.101
AST, U/l	25 (16-34)	42(23-67)	<0.001
ALT, U/l	27 (19-38)	28 (20-52)	0.273
Total protein, g/l	7.0 (6.5-7.2)	6.3 (5.8-6.8)	<0.001
Albumin, g/l	4.3±0.4	3.9±0.5	<0.001
Troponin I, ng/l	3.0 (0-6.0)	10.0 (6.0-22.5)	<0.001
D-dimer, mg/l	0.50 (0.29-0.82)	1.01 (0.53-2.68)	<0.001
WBC, ×10 <sup>9</sup> /l	5.31(4.48-6.19)	7.01 (5.29-9.34)	0.002
Neutrophils, ×10 <sup>9</sup> /l	3.16 (2.65-4.26)	4.87 (4.06-8.13)	<0.001
Lymphocytes, ×10 <sup>9</sup> /l	1.27 (0.93-1.62)	0.78 (0.54-1.14)	<0.001
Platelets, ×10 <sup>9</sup> /l	211.0 (163.0-238.0)	197.5 (168.7-262.7)	0.741
Monocytes, ×10 <sup>9</sup> /l	0.33 (0.25-0.50)	0.24 (0.18-0.46)	0.085
NLR	2.52 (1.77-3.68)	6.17 (4.27-15.0)	<0.001
CRP, g/l	12.4 (3.1-37.6)	133 (59.8-189.0)	<0.001
IL-6, pg/ml	8.8 (4.0-24.1)	45.4 (27.2-89.0)	<0.001
Procalcitonin, µg/l	0.05 (0.03-0.10)	0.14 (0.07-0.89)	0.001
Ferritin, µg/l	172 (60-296)	432 (208-646)	<0.001
EFV, cm <sup>3</sup>	94.3±45.5	115.1±44.0	0.037

Parameters are mean ± standard deviation or median (interquartile range).

ALT: alanine transaminase; AST: aspartate transaminase; CRP: C-reactive protein; EFV: epicardial fat volume; IL-6: interleukin-6; LMR: lymphocyte to monocyte ratio; NLR: neutrophil to lymphocyte ratio; WBC: white blood cells.



**Figure 2** Comparison of epicardial fat volume in patients admitted to the intensive care unit and to the ward.



**Figure 3** Correlation between epicardial fat volume and C-reactive protein level.

**Table 3** Correlation analysis between epicardial fat volume and inflammatory biomarkers in COVID-19 patients.

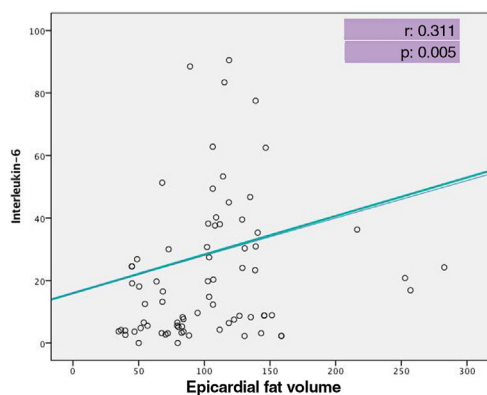
Covariates	Epicardial fat volume	
	r	p
CRP	0.494	<0.001
IL-6	0.311	0.005
PCT	0.287	0.005
Ferritin	0.265	0.010
NLR	0.181	0.070

CRP: C-reactive protein; IL-6: interleukin-6; NLR: neutrophil to lymphocyte ratio; PCT: procalcitonin.

the correlation between EFV and inflammatory biomarkers including CRP, PCT, ferritin and IL-6 in all COVID-19 patients. A statistically significant positive correlation was detected between EFV and CRP (r: 0.494, p<0.001) (Figure 3), IL-6 (r: 0.311, p=0.005) (Figure 4), PCT (r: 0.287, p=0.05) and ferritin (r: 0.265, p=0.010).

### Receiver operating characteristic analysis of epicardial fat volume and inflammatory biomarkers on admission

ROC analysis was performed to assess clinical and laboratory biomarkers at the first visit for prediction of COVID-19 severity. This demonstrated that the area under the curve (AUC) of CRP, IL-6, PCT, ferritin and EFV for predicting severe



**Figure 4** Correlation between epicardial fat volume and interleukin-6 level.

COVID-19 was 0.90 (95% confidence interval [CI]: 0.84-0.96), 0.73 (95% CI: 0.60-0.87), 0.74 (95% CI: 0.63-0.85), 0.85 (95% CI: 0.74-0.96) and 0.86 (95% CI: 0.74-0.96), respectively (Table 4). ROC analysis also demonstrated that at a cut-off of 46 mg/l, the sensitivity, specificity, positive predictive value (PPV) and negative predictive value (NPV) of CRP was 82%, 81%, 57%, and 93%, respectively; at a cut-off of 25 pg/ml, the sensitivity, specificity, PPV, and NPV of IL-6 were 83%, 80%, 55%, and 94%, respectively; and at a cut-off of 0.07  $\mu\text{g/l}$ , the sensitivity, specificity, PPV, and NPV of PCT were 73%, 67%, 41%, and 89%, respectively. Moreover, at a cut-off of 202  $\mu\text{g/l}$ , the sensitivity, specificity, PPV, and NPV of ferritin were 80%, 60%, 42%, and 89% respectively. Lastly, at a cut-off of 102  $\text{cm}^3$ , the sensitivity, specificity, PPV and NPV of EFV were 82%, 80%, 58%, and 94% respectively. ROC analysis also showed that the AUC of CRP and EFV to predict disease severity was higher than that of other inflammatory biomarkers, which demonstrated the excellent predictive power of these parameters for severity of COVID-19.

Univariate regression analysis was performed in order to assess the relationship between clinical characteristics and ICU admission (Table 5), which showed that age (odds ratio [OR]: 1.07, 95% CI: 1.03-1.11,  $p < 0.001$ ), hypertension (OR: 2.90, 95% CI: 1.13-7.42,  $p = 0.026$ ) and EFV (OR: 1.03, 95% CI: 1.01-1.04,  $p < 0.001$ ) were associated with ICU admission. Multivariate regression analysis was then performed to detect independent predictors of admission to the ICU. Both age and EFV independently predicted ICU admission at a significant level (OR: 1.05, 95% CI: 1.01-1.10,  $p = 0.013$  and OR: 1.02, 95% CI: 1.01-1.03,  $p = 0.025$ , respectively).

## Discussion

To date, the global COVID-19 pandemic has imposed severe burdens on medical systems. It is critical to identify COVID-19 patients who may become severely ill at the first hospital admission in order to facilitate control of the disease and to improve patients' prognosis in a context of limited medical resources. To our knowledge this is the first study to report an association between EFV and clinical severity of COVID-19. This retrospective cohort study identified several predictors of poor prognosis in adults hospitalized with COVID-19. In particular, older age, presence of comorbid diseases and elevated levels of inflammatory biomarkers including CRP, PCT, ferritin and IL-6 on admission were more commonly seen in severe COVID-19 illness. Furthermore, EFV as measured by MSCT was also demonstrated to be related to the clinical severity of these patients and was also positively correlated with the above-mentioned inflammatory biomarkers. Moreover, in multivariate logistic regression analysis both age and EFV independently predicted admission to the ICU.

EAT is a visceral fat deposit and as such has the capacity to secrete a number of cytokines and chemokines, together known as adipokines. These are biologically active molecules that are secreted by mature adipocytes themselves as well as stromal preadipocytes, macrophages, fibroblasts, mast cells and lymphocytes that are located within the adipose tissue.<sup>19</sup> IL-6, -8, -10 and IL-1 $\beta$ , TNF- $\alpha$ , MCP-1, adiponectin, leptin and plasminogen activator inhibitor 1 are all examples of adipokines.<sup>20</sup> In normal quantities, EAT has various putative physiological functions. However, many changes occur as EAT volumes increase. These changes are often characterized by hypertrophy, failure to store triglycerides, increased lipolysis and inflammation.<sup>21</sup> As EAT expands, it becomes hypoxic and dysfunctional and is invaded by increasing numbers of macrophages and T lymphocytes, resulting in a shift in its metabolic profile.<sup>22</sup> The result is increased secretion of proinflammatory cytokines such as IL-6, TNF- $\alpha$ , MCP-1 and many others that contribute to the inflammatory environment.<sup>8</sup> In this setting, the beneficial paracrine effects of EAT are lost. Shimabukuro et al. showed that EFV was positively correlated with the expression of inflammatory cytokines in EAT, but was negatively correlated with adiponectin expression.<sup>23</sup> Malavazos et al. studied the association between EAT thickness and plasma cytokine levels in severe patients with obesity. They reported that EAT thickness was positively correlated with cytokine levels (i.e. MCP-1 and the serum IL-6/IL-6 complex).<sup>24</sup>

**Table 4** Receiver operating characteristic curves for severity in COVID-19 patients.

Variable	Cut-off	AUC (95% CI)	Sensitivity, %	Specificity, %	PPV, %	NPV, %	PLR	NLR
CRP	46.0	0.904 (0.843-0.965)	82.6	81.1	57.5	93.7	4.37	0.21
IL-6	25.65	0.857 (0.745-0.969)	83.3	80.3	55.5	94.3	4.22	0.21
PCT	0.075	0.739 (0.606-0.872)	73.9	67.1	41.4	89.09	2.24	0.39
Ferritin	202.5	0.740 (0.630-0.851)	80.0	60.9	42.5	89.3	2.04	0.33
EFV	102.1	0.864 (0.742-0.967)	82.2	80.6	58.5	93.9	4.27	0.21

AUC: area under the curve; CI: confidence interval; CRP: C-reactive protein; EFV: epicardial fat volume; IL-6: interleukin-6; NLR: negative likelihood ratio; NPV: negative predictive value; PCT: procalcitonin; PLR: positive likelihood ratio; PPV: positive predictive value.

**Table 5** Independent predictors of admission to the intensive care unit in COVID-19 patients by logistic regression analysis.

Variable	Univariate		Multivariate	
	OR (95% CI)	p	OR (95% CI)	p
Age	1.07 (1.03-1.11)	<0.001	1.05 (1.01-1.10)	0.013
Gender	1.07 (0.44-2.60)	0.872	.	..
Diabetes	0.62 (0.21-1.86)	0.391	..	..
Hypertension	2.90 (1.13-7.42)	0.026	0.99 (0.29-3.34)	0.987
CAD	2.96 (0.78-11.1)	0.109	..	..
COPD	0.48 (0.10-2.31)	0.362	..	..
EFV	1.03 (1.01-1.04)	0.001	1.02 (1.01-1.03)	0.025

Multivariate logistic regression model's Nagelkerke R square=0.338; -2 log likelihood=92.2; p<0.001.

Hosmer-Lemeshow test's chi-square value=9.1; p=0.331.

CAD: coronary artery disease; CI: confidence interval; COPD: chronic obstructive pulmonary disease; EFV: epicardial fat volume; OR: odds ratio.

The inflammatory response plays a critical role in COVID-19, and inflammatory cytokine storm increases the severity of COVID-19.<sup>25,26</sup> Wang et al. found that the inflammatory response is crucial to the progression of COVID-19 and cytokine storm can lead to severe complications and death.<sup>27</sup> The fifth edition of the Chinese Diagnosis and Treatment Protocols for COVID-19 recommends monitoring cytokine levels to improve treatment efficacy and reduce mortality,<sup>28</sup> while the seventh edition of this guideline points out that peripheral blood inflammatory factors such as IL-6 may increase during COVID-19 infection.<sup>29</sup>

Cytokine releasing syndrome (CRS) occurs in most patients with severe COVID-19 and is known to be an important cause of death. It is a systemic inflammatory response that can be caused by infectious diseases, certain drugs and other factors, and is characterized by a sharp increase in the level of several proinflammatory cytokines.<sup>30–32</sup> SARS-CoV-2 binds to alveolar epithelial cells, activates the innate and adaptive immune systems and thus leads to the release of large quantities of cytokines, including IL-6, which is the key molecule involved in CRS. IL-6 is an important member of the cytokine network and plays a central role in acute inflammation.<sup>33</sup> It has both anti-inflammatory and proinflammatory effects. Liu et al. showed an increase in inflammatory cytokines (IL-6, IL-10, IL-2 and interferon gamma) in the peripheral blood in severe COVID-19 cases.<sup>34</sup> Zhang et al. also found a relationship between higher IL-6 and CRP levels and disease progression in hospitalized COVID-19 patients.<sup>35</sup> The present study likewise showed increased IL-6 levels in severe COVID-19 patients. In addition to this finding, a statistically significant positive correlation was detected between EFV and IL-6 level in this study.

Besides direct attack from the virus, progressive inflammatory injury has been suggested as a possible mechanism in COVID-19.<sup>1</sup> CRP is a downstream acute phase protein in the innate immune response.<sup>36</sup> It is produced following the increased synthesis of proinflammatory cytokines to activate the immune response.<sup>37</sup> Serum CRP level has therefore often been used as a laboratory marker of inflammation.<sup>36,37</sup> Zhang et al. reported CRP as a predictor of the progression of COVID-19.<sup>35</sup> Similarly, we found significantly higher CRP levels at admission in severe cases of COVID-19 compared to

mild cases. Moreover, we also demonstrated a positive correlation between CRP level and EFV. Eslami et al. investigated the association of CT-measured EAT thickness and density with clinical outcome in 87 patients with COVID-19 and found that mean EAT density was markedly lower in deceased patients compared with survivors, although this significant difference was not observed across the two groups in terms of EAT thickness.<sup>38</sup> In the present study, we measured EFV in COVID-19 patients, rather than EAT thickness and density. Higher EFV was observed in severe patients compared to milder cases. Wei et al. studied EFV as a potential risk factor for myocardial injury in 400 laboratory-confirmed COVID-19 patients and, similarly to our result, found an association between increased EFV on admission chest CT scan and increased myocardial injury and mortality.<sup>39</sup> They therefore suggested that assessment of EFV by chest CT scan on admission may provide a potentially useful threshold for predicting cardiovascular complications of COVID-19.

PCT is a glycoprotein without hormonal activity that is the precursor of calcitonin.<sup>40,41</sup> Serum PCT levels are usually low or undetectable<sup>42</sup> but are increased by bacterial infections and relatively low in viral infections, and can therefore be used to distinguish between bacterial and viral infections.<sup>43</sup> Higher PCT levels detected in patients with severe COVID-19 usually suggest the presence of concomitant bacterial infection. Liu et al.<sup>44</sup> recently studied PCT, CRP and IL-6 levels in COVID-19 patients, dividing them into two groups: with severe disease or with mild disease. They found significantly higher PCT, CRP and IL-6 levels in the severe group compared to the mild group. In addition, they identified all of these inflammatory biomarkers as independent factors predicting the severity of COVID-19. Our results also demonstrated higher levels of admission PCT, CRP and IL-6 levels in severe COVID-19 patients. Furthermore, we showed a positive correlation between these inflammatory biomarkers and EFV.

Serum ferritin can be elevated during infection and inflammation. High ferritin levels due to secondary hemophagocytic lymphohistiocytosis and CRS have been reported in severe COVID-19 patients. Velavan et al. recommended the use of serum ferritin, CRP and IL-6 levels in risk stratification of COVID-19 patients to predict severe



and fatal COVID-19.<sup>45</sup> In our study, we also showed significantly elevated ferritin levels in severe COVID-19 cases and a positive correlation of ferritin with EFV.

There are some limitations in this study. First of all, it is a single-center study with a relatively small sample size. Secondly, it is retrospective in nature, and the results need to be further verified by prospective studies. Thirdly, we aimed to analyze the risk factors that determine prognosis, but the poor prognosis group was small and we were therefore unable to analyze the differences in clinical characteristics of patients in this group. Fourthly, we did not include asymptomatic and mild cases managed at home, and hence our cohort may represent a more severe COVID-19 population. Fifthly, the treatment of these patients was clinically driven and did not follow a unified standard.

## Conclusion

Epicardial fat volume and serum CRP, IL-6, PCT and ferritin levels show a significant correlation with the severity of COVID-19. In hospitalized patients, clinicians should consider EFV in addition to serum levels of the above inflammatory biomarkers in risk stratification of patients to predict severe and fatal COVID-19. Our findings could help facilitate the early identification of severe COVID-19 patients and thus enable early treatment and intervention.

## Funding

This research did not receive any specific grant from funding agencies in the public, commercial, or not-for-profit sectors.

## Conflicts of interest

The authors have no conflicts of interest to declare.

## References

- Huang C, Wang Y, Li X, et al. Clinical features of patients infected with 2019 novel coronavirus in Wuhan, China. *Lancet*. 2020;395:497–506.
- Guan WJ, Ni ZY, Hu Y, et al. Clinical characteristics of coronavirus disease 2019 in China. *N Engl J Med*. 2020;382:1708–20.
- Onder G, Rezza G, Brusaferro S. Case-fatality rate and characteristics of patients dying in relation to COVID-19 in Italy. *JAMA*. 2020;323:1775–6.
- Mehta P, McAuley DF, Brown M, et al. COVID-19: consider cytokine storm syndromes and immunosuppression. *Lancet*. 2020;395:1033–4.
- Liu B, Li M, Zhou Z, et al. Can we use interleukin-6 (IL-6) blockade for coronavirus disease 2019 (COVID-19)-induced cytokine release syndrome (CRS)? *J Autoimmun*. 2020;111:102452.
- Marwan M, Achenbach S. Quantification of epicardial fat by computed tomography: why, when and how? *J Cardiovasc Comput Tomogr*. 2013;7:3–10.
- Iacobellis G, Corradi D, Sharma AM. Epicardial adipose tissue: anatomic, biomolecular and clinical relationships with the heart. *Nat Clin Pract Cardiovasc Med*. 2005;2:536–43.
- Mazurek T, Zhang L, Zalewski A, et al. Human epicardial adipose tissue is a source of inflammatory mediators. *Circulation*. 2003;108:2460–6.
- Dey D, Nakazato R, Li D, et al. Epicardial and thoracic fat - noninvasive measurement and clinical implications. *Cardiovasc Diagn Ther*. 2012;2:85–93.
- Kim BJ, Kim BS, Kang JH. Echocardiographic epicardial fat thickness is associated with arterial stiffness. *Int J Cardiol*. 2013;167:2234–8.
- Spearman JV, Renker M, Schoepf UJ, et al. Prognostic value of epicardial fat volume measurements by computed tomography: a systematic review of the literature. *Eur Radiol*. 2015;25:3372–81.
- Bucher AM, Joseph Schoepf U, Krazinski AW, et al. Influence of technical parameters on epicardial fat volume quantification at cardiac CT. *Eur J Radiol*. 2015;84:1062–7.
- Nagayama Y, Nakamura N, Itatani R, et al. Epicardial fat volume measured on nongated chest CT is a predictor of coronary artery disease. *Eur Radiol*. 2019;29:3638–46.
- Tan C, Huang Y, Shi F, et al. C-reactive protein correlates with computed tomographic findings and predicts severe COVID-19 early. *J Med Virol*. 2020;92:856–62.
- Zhang C, Wu Z, Li JW, et al. Cytokine release syndrome in severe COVID-19: interleukin-6 receptor antagonist tocilizumab may be the key to reduce mortality. *Int J Antimicrob Agents*. 2020;55:105954.
- Zhao L. Obesity accompanying COVID-19: the role of epicardial fat. *Obesity (Silver Spring)*. 2020;28:1367.
- Neill Adhikari SHS. Centre and University of Toronto; John Adabie Appiah SS, Paediatric Critical, Care and Head of Paediatric Intensive Care Unit of the Komfo Anokye Teaching Hospital, et al. WHO Clinical management of severe acute respiratory infection when novel coronavirus (nCoV) infection is suspected: interim guidance 2020. In: WHO interim guidance; 2020. p. 62.
- Report of the WHO-China Joint Mission on Coronavirus Disease 2019 (COVID-19). WHO; 2020. p. 40.
- Shioji K, Moriguchi A, Moriwaki S, et al. Hypoadiponectinemia implies the development of atherosclerosis in carotid and coronary arteries. *J Cardiol*. 2005;46:105–12.
- McLean DS, Stillman AE. Epicardial adipose tissue as a cardiovascular risk marker. *Clin Lipidol*. 2009;4:55–62.
- Fitzgibbons TP, Czech MP. Epicardial and perivascular adipose tissues and their influence on cardiovascular disease: basic mechanisms and clinical associations. *J Am Heart Assoc*. 2014;3, e000582.
- Greenstein AS, Khavandi K, Withers SB, et al. Local inflammation and hypoxia abolish the protective anticontractile properties of perivascular fat in obese patients. *Circulation*. 2009;119:1661–70.
- Shimabukuro M, Hirata Y, Tabata M, et al. Epicardial adipose tissue volume and adipocytokine imbalance are strongly linked to human coronary atherosclerosis. *Arterioscler Thromb Vasc Biol*. 2013;33:1077–84.
- Malavazos AE, Ermetici F, Coman C, et al. Influence of epicardial adipose tissue and adipocytokine levels on cardiac abnormalities in visceral obesity. *Int J Cardiol*. 2007;121:132–4.
- Lu QB, Zhang Y, Liu MJ, et al. Epidemiological parameters of COVID-19 and its implication for infectivity among patients in China, 1 January to 11 February 2020. *Euro Surveill*. 2020;25.
- Zumla A, Hui DS, Azhar EI, et al. Reducing mortality from 2019-nCoV: host-directed therapies should be an option. *Lancet*. 2020;395:e35–6.
- Wang F, Nie J, Wang H, et al. Characteristics of peripheral lymphocyte subset alteration in COVID-19 pneumonia. *J Infect Dis*. 2020;221:1762–9.
- Diagnosis and treatment protocols for patients with novel coronavirus pneumonia. National Health and Health Commission of the People's Republic of China; 2020. p. 10.
- Diagnosis and Treatment Protocol for Novel Coronavirus Pneumonia (Trial Version 7). National Health and Health Commission of the People's Republic of China; 2020. p. 17.

30. Shimabukuro-Vornhagen A, Gödel P, Subklewe M, et al. Cytokine release syndrome. *J Immunotherapy Cancer*. 2018;6:56.
31. Norelli M, Camisa B, Barbiera G, et al. Monocyte-derived IL-1 and IL-6 are differentially required for cytokine-release syndrome and neurotoxicity due to CAR T cells. *Nat Med*. 2018;24:739–48.
32. Teijaro JR. Cytokine storms in infectious diseases. *Semin Immunopathol*. 2017;39:501–3.
33. Scheller J, Rose-John S. Interleukin-6 and its receptor: from bench to bedside. *Med Microbiol Immunol*. 2006;195:173–83.
34. Liu J, Li S, Liu J, et al. Longitudinal characteristics of lymphocyte responses and cytokine profiles in the peripheral blood of SARS-CoV-2 infected patients. *EBioMedicine*. 2020;55:102763.
35. Zhang J, Yu M, Tong S, et al. Predictive factors for disease progression in hospitalized patients with coronavirus disease 2019 in Wuhan, China. *J Clin Virol*. 2020;127:104392.
36. Clyne B, Olshaker JS. The C-reactive protein. *J Emerg Med*. 1999;17:1019–25.
37. Gershov D, Kim S, Brot N, et al. C-Reactive protein binds to apoptotic cells, protects the cells from assembly of the terminal complement components, and sustains an antiinflammatory innate immune response: implications for systemic autoimmunity. *J Exp Med*. 2000;192:1353–64.
38. Eslami V, Abrishami A, Zarei E, et al. The association of CT-measured cardiac indices with lung involvement and clinical outcome in patients with COVID-19. *Acad Radiol*. 2021;28:8–17.
39. Wei ZY, Qiao R, Chen J, et al. Pre-existing health conditions and epicardial adipose tissue volume: potential risk factors for myocardial injury in COVID-19 patients. *Front Cardiovasc Med*. 2020;7:585220.
40. Saeed K, Dale AP, Leung E, et al. Procalcitonin levels predict infectious complications and response to treatment in patients undergoing cytoreductive surgery for peritoneal malignancy. *Eur J Surg Oncol*. 2016;42:234–43.
41. Choi JJ, McCarthy MW. Novel applications for serum procalcitonin testing in clinical practice. *Expert Rev Mol Diagn*. 2018;18:27–34.
42. Zhang L, Zhang X. Serum sTREM-1, PCT, CRP, Lac as biomarkers for death risk within 28 days in patients with severe sepsis. *Open Life Sci*. 2018;13:42–7.
43. Rodriguez A, Reyes LF, Monclou J, et al. Relationship between acute kidney injury and serum procalcitonin (PCT) concentration in critically ill patients with influenza infection. *Med Intensiva*. 2018;42:399–408.
44. Liu F, Li L, Xu M, et al. Prognostic value of interleukin-6, C-reactive protein, and procalcitonin in patients with COVID-19. *J Clin Virol*. 2020;127:104370.
45. Velavan TP, Meyer CG. Mild versus severe COVID-19: laboratory markers. *Int J Infect Dis*. 2020;95:304–7.