

# A new species of sublittoral marine gastrotrich, *Lepidodasys ligni* sp. n. (Macrodasyida, Lepidodasyidae), from the Atlantic coast of Florida

Rick Hochberg<sup>1,†</sup>, Sarah Atherton<sup>1,‡</sup>, Vladimir Gross<sup>1,§</sup>

<sup>1</sup> University of Massachusetts Lowell, One University Avenue, Lowell, MA 01854 USA, 01.978.934.2885

<sup>†</sup> [urn:lsid:zoobank.org:author:8C5BB2F6-35A3-4A4D-9F67-C2A21A5DADE1](https://zoobank.org/urn:lsid:zoobank.org:author:8C5BB2F6-35A3-4A4D-9F67-C2A21A5DADE1)

<sup>‡</sup> [urn:lsid:zoobank.org:author:1F597997-CD78-4F36-A82B-977B14DCAA6C](https://zoobank.org/urn:lsid:zoobank.org:author:1F597997-CD78-4F36-A82B-977B14DCAA6C)

<sup>§</sup> [urn:lsid:zoobank.org:author:91828FEC-DC12-4737-8782-A8432B80F47C](https://zoobank.org/urn:lsid:zoobank.org:author:91828FEC-DC12-4737-8782-A8432B80F47C)

Corresponding author: Rick Hochberg ([rick\\_hochberg@uml.edu](mailto:rick_hochberg@uml.edu))

---

Academic editor: M. A. Todaro | Received 26 January 2013 | Accepted 20 March 2013 | Published 12 April 2013

[urn:lsid:zoobank.org:pub:50493A17-1FF0-4B9B-9086-4CA782B8ACF3](https://zoobank.org/pub:50493A17-1FF0-4B9B-9086-4CA782B8ACF3)

---

**Citation:** Hochberg R, Atherton S, Gross V (2013) A new species of sublittoral marine gastrotrich, *Lepidodasys ligni* sp. n. (Macrodasyida, Lepidodasyidae), from the Atlantic coast of Florida. ZooKeys 289: 1–12. doi: 10.3897/zookeys.289.4764

---

## Abstract

A new species of *Lepidodasys* is described from sublittoral sandy sediments off the Atlantic coast of Florida. *Lepidodasys ligni* sp. n. is a small species ( $\leq 450 \mu\text{m}$ ) with a crossed-helical pattern of small, non-keeled, non-imbricated scales on the dorsal and lateral body surfaces, two columns of ventral, interciliary scales that form a herringbone pattern, and a series of anterior, lateral, dorsal and posterior adhesive tubes. Similar to *L. castoroides* from the Faroe Islands, the new species possesses a caudal constriction that demarcates the posterior end containing the caudal organ. The frontal organ lies within the posterior constriction, which is heavily invested with somatic circular muscles. These muscles are also present throughout the trunk and represent a novel condition for species of *Lepidodasys*, which were previously considered to lack somatic circular muscles. Posterior of the caudal constriction is a large, barrel-shaped caudal organ that is wrapped in a series of interdigitating, spindle-shaped, incomplete circular muscle fibers. The caudal organ contains a sclerotized central canal, but the absence of distal cuticular endpieces distinguishes the new species from its morphologically similar congener, *L. castoroides*.

## Keywords

Meiofauna, Florida, sublittoral, Capron Shoal, taxonomy, confocal

## Introduction

Marine gastrotrichs are common members of the meiobenthos in intertidal and subtidal sandy sediments worldwide, and recent studies of various waters around the Caribbean – from the southern Atlantic waters of Florida to Panama - have revealed a wealth of previously undescribed species (Hochberg 2008, 2010; Hummon 2010; Hochberg and Atherton 2010, 2011; Atherton and Hochberg 2012; Kieneke et al. 2013a,b; Todaro & Leasi 2013). Species of *Lepidodasys* are exceptional among marine macrodasyidan gastrotrichs because of their pharyngeal architecture, muscular organization, unique spermatogenesis and the structure of their sculpted cuticle (see Ruppert 1978, 1991; Guidi et al 2004). Indeed, these unique qualities are what prompted Hummon and Todaro (2010) to erect the monogeneric family, Lepidodasyidae. While over 400 species of marine gastrotrichs have been described worldwide (Hummon 2009), only eight species of *Lepidodasys* are described, which includes five species from European waters (Remane 1926, 1927; Balsamo et al. 1994; Clausen 2000, 2004), two species from Japanese waters (Lee and Chang 2011) and one species from the Caribbean (Hochberg and Atherton 2011).

While most species of *Lepidodasys* are identified based on the structure of their cuticle and the distribution and abundance of their adhesive tubes, two species are known to possess large reproductive organs that further differentiate them from the remaining members of the genus. *Lepidodasys castoroides* Clausen, 2004 possesses a large, barrel-shaped caudal organ with cuticular endpieces, and *L. tsushmainensis* Lee & Chang, 2011 possesses a pyriform-shaped caudal organ without cuticular endpieces. During a recent sampling expedition to Capron Shoal, Florida, we discovered a previously undescribed species of *Lepidodasys* with a caudal organ reminiscent of the two aforementioned species. Herein, we describe this new species and provide detailed information on its caudal organ using f-actin staining and confocal laser scanning microscopy.

## Methods

In June 2012, approximately 18 liters of sediment were collected via anchor dredge from 9 m depth at Capron Shoal, Florida (27°26'52" N, 80°13'81" W). Meiofauna were extracted from the sediments using the anesthetization-decantation technique with 7% MgCl<sub>2</sub> and a 53 µm mesh. Specimens were sorted with a Leica EZ4 stereomicroscope, transferred to a glass slide, and viewed with a Zeiss A1 Axioscope equipped with DIC (differential interference contrast) and a Sony Handycam digital camera. Measurements of all specimens were performed with an ocular micrometer, and the size and positions of various organs are described in terms of percentage body units: anterior (U00) to posterior (U100) is 100 units.

For phalloidin staining of f-actin, we fixed two specimens in 4% paraformaldehyde in 0.1M phosphate buffer saline (PBS, pH 7.3) for 1 h, rinsed them in 0.1M

PBS + 1% Triton X-100 (PBT) for 1 hr, and then stained them in Alexa Fluor 488 Phalloidin for 1 hr (following the manufacturer's protocol, Invitrogen). Stained specimens were then briefly rinsed in PBS and mounted directly in Fluoromount G on glass microscope slides with coverslips.

Phalloidin-stained specimens were examined on a Zeiss LSM 510 confocal microscope system at the Smithsonian Marine Station (Fort Pierce, Florida). Zeiss Zen 2009 software (Carl Zeiss Microimaging, Thornwood, NY) was used to collect a series of 0.25-0.4 mm optical sections with maximum intensity projection along the z-axis. Confocal images were saved as TIF files and rendered into 3-D images using Volocity software (Perkin Elmer). Carnoy V 2.0 (© 2001 Peter Schols) was used to measure various organs in the digital images.

One stained specimen was removed from Fluoromount G after examination and prepared for museum archival with the following procedure: 1 hr rinse with PBS followed by 1% OsO<sub>4</sub> in 0.1M PBS for 10 min (to increase contrast); rinse in PBS for 1 hr; dehydrate in an ethanol series; transfer to propylene oxide for 30 min; embed in resin (epon) on a glass microscope slide and place in an oven at 60° C for 48 hrs. The type specimen is deposited in the National Museum of Natural History, Smithsonian Institution, Washington, DC.

Grain size was determined on a subsample of the sediments by drying them out in a 60° C oven for 24 hrs, and then sieving them with a Gilson SS-15 sieve shaker with mesh sizes 2 mm, 1 mm, 500 µm, 250 µm, 125 µm and 63 µm. Sieve fraction weights were entered into the program GRANPLOTS with line segment (Balsille et al. 2002) and granulometric data was calculated.

## Results

**Order Macrodasysida Remane, 1925 [Rao and Clausen, 1970]**

**Family Lepidodasyidae Remane, 1927 [Hummon and Todaro, 2010]**

**Genus *Lepidodasys* Remane, 1926**

***Lepidodasys ligni* sp. n.**

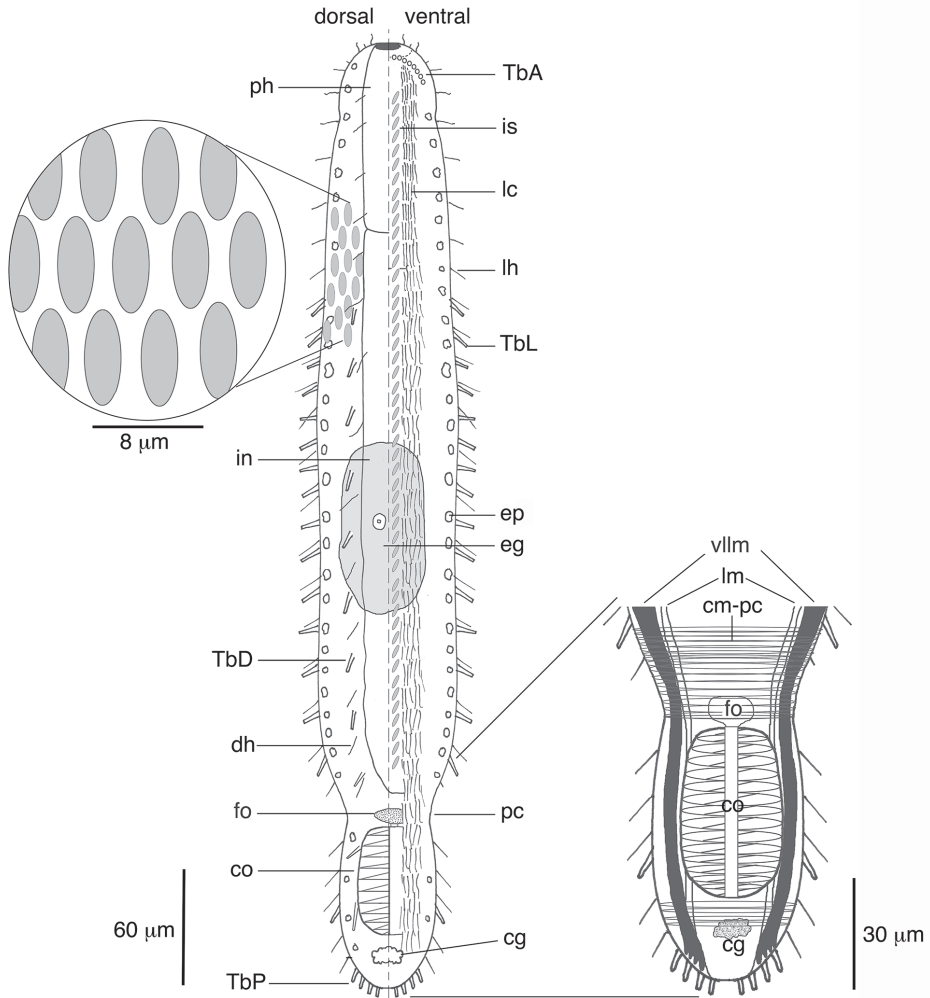
urn:lsid:zoobank.org:act:41A72CCB-BEAD-4207-BDA5-71F36B350C05

[http://species-id.net/wiki/Lepidodasys\\_ligni](http://species-id.net/wiki/Lepidodasys_ligni)

Figs 1–3

**Type locality.** Sediment from 9 m depth at Capron Shoal, Florida (27°26'52"N, 80°13'81"W), collected by Mr. Woody Lee. Granulometry as follows: Mean size 1.66 phi; SD 0.72 phi; skewness -0.95; and kurtosis 5.11. The sediments can be characterized as medium to fine grain sand with a large proportion of the sand fraction larger than the median (positive kurtosis).

**Holotype.** Adult specimen, reproductively mature, 450 µm long; resin preparation: USNM # 1202682.



**Figure 1.** Schematic of *Lepidodasys ligni* sp. n. showing the crossed-helical scale pattern and a closeup of the musculature in the caudal region. Abbreviations: **cg** caudal gland; **cm-pc** circular musculature of the posterior constriction; **co** caudal organ; **dh** dorsal sensory hairs; **eg** mature egg; **ep** epidermal gland; **fo** frontal organ; **in** intestine; **is** interciliary scales; **lc** locomotory cilia; **lh** lateral sensory hairs; **lm** longitudinal muscle; **pc** posterior constriction; **ph** pharynx; **TbA** anterior adhesive tubes; **TbD** dorsal adhesive tubes; **TbL** lateral adhesive tubes; **TbP** posterior adhesive tubes; **vllm** ventrolateral longitudinal muscle.

**Paratypes.** Digital video of two adult specimens submitted to the National Museum of Natural History, Smithsonian Institution, Washington, DC. Scale patterns and reproductive anatomy visible in videos.

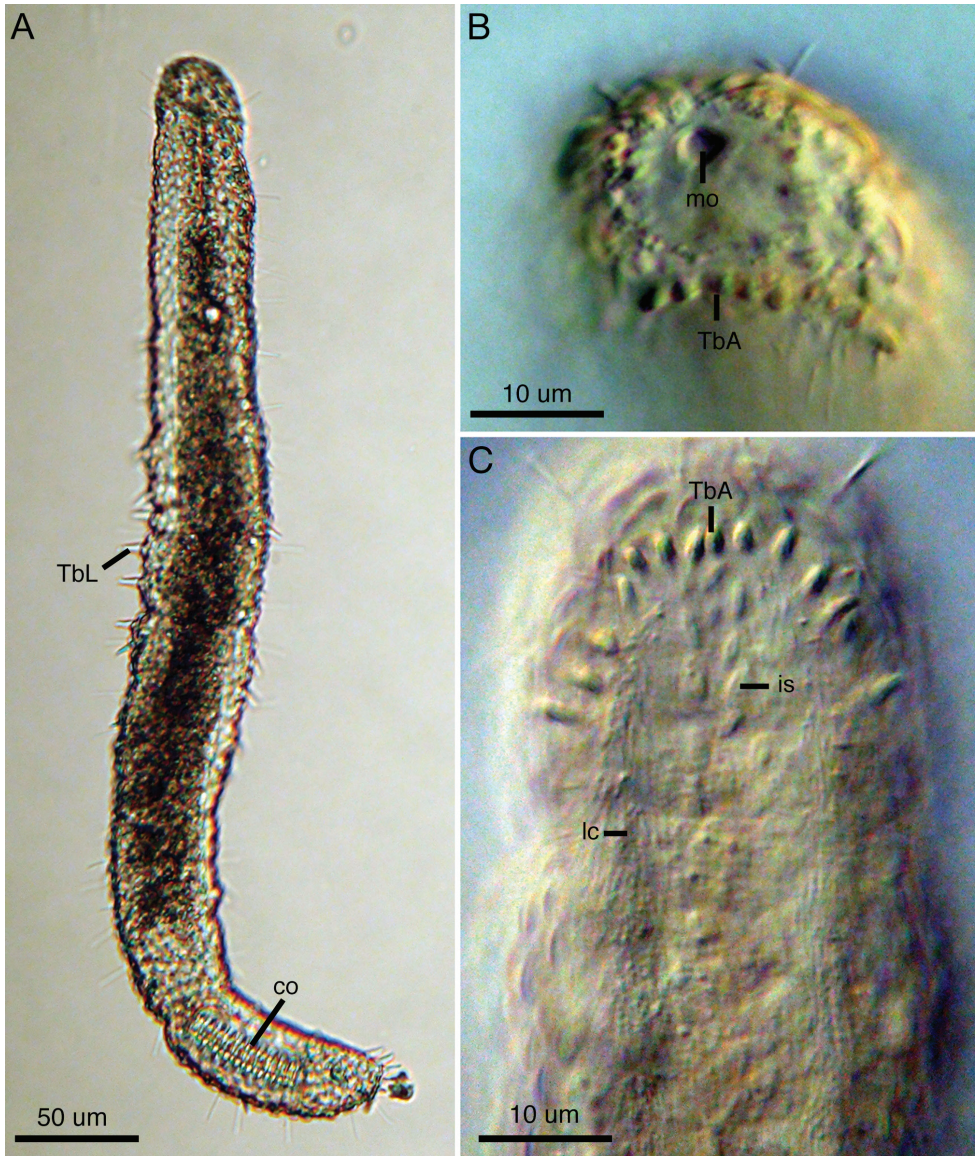
**Material examined.** Eleven specimens were examined alive. Digital video was captured of three specimens. Two of the eleven specimens were prepared for phalloidin staining. One of the phalloidin-stained specimens was prepared for archival.

**Diagnosis.** *Lepidodasys* with a strap-shaped adult body to 450  $\mu\text{m}$  long. The body possesses two constrictions at approximately U06–07 and U82; the first constriction demarcates the approximate mid-region of the pharynx, and the second constriction demarcates the posterior region containing the caudal organ. Maximum body width at U06/pharyngo-intestinal junction (PhIJ:U20)/midpoint of body (U50) is 32/44/50  $\mu\text{m}$ , respectively. Pharynx to 90  $\mu\text{m}$  long. Body covered with eye-shaped, non-imbriating scales arranged in a crossed-helical pattern across the dorsal and lateral surfaces; two columns of ventral intercalary scales present at midline in herringbone pattern. Up to eight anterior adhesive tubes (TbA) per side inserting directly on body surface and forming an arc toward the lateral body wall. Lateral adhesive tubes (TbL) present, up to 14 per side, beginning posterior of the PhIJ. Dorsal adhesive tubes (TbD) present, up to 11 per side, beginning at the PhIJ and extending to the caudal end. Eight posterior adhesive tubes (TbP) insert terminally on rounded caudal end. Frontal organ and large barrel-shaped caudal organ with strong circular muscles and inner canal present; ovaries and testes not observed.

**Etymology.** The Latin *ligni* (wood) refers to Mr. William “Woody” Lee at the Smithsonian Marine Station at Fort Pierce, Florida, who assisted in the collection of the species and has been instrumental over the past decade in sublittoral collection of meiofauna for the first author (RH).

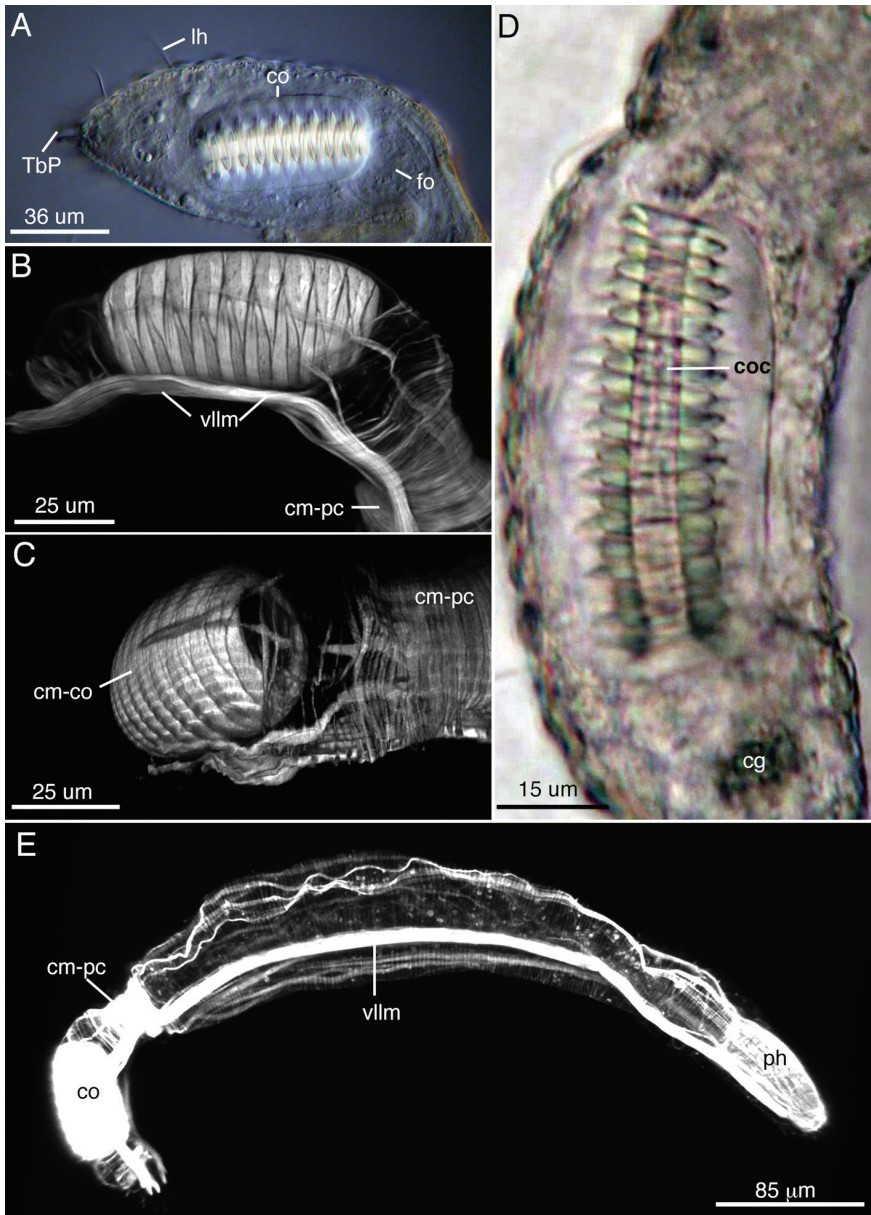
**Description.** The description is based on the holotype (adult, 445  $\mu\text{m}$  long; Fig. 2A), with ranges provided from specimens measured in vivo. Body strap-shaped with two notable constrictions at mid-pharynx (U06-07) and caudal end (-U82); first constriction demarcates the approximate mid-length of the pharynx and the second constriction demarcates the region of the accessory copulatory organs (Figs 1, 2A). Pharynx 90 mm long with no pharyngeal pores observed. Few sensory hairs to 8  $\mu\text{m}$  long line the mouth. Stiff sensory hairs 8–15  $\mu\text{m}$  are present along the ventrolateral, lateral and dorsolateral margins of the body. Ventral locomotory cilia present as two columns, each approximately 8  $\mu\text{m}$  wide, that extend from ca. U05 to the posterior end (Fig. 1). Numerous small (2–5  $\mu\text{m}$ ) epidermal glands along the margins of the body.

**Cuticular armature.** A crossed-helical pattern of up to eight columns of elliptical scales extend across the dorsal body wall; the number of scales per column varies from 8-10 in the pharyngeal region to up to 12 in the trunk. At least three columns of elliptical scales extend around the lateral body margins and reach the ventral locomotory cilia (Fig. 1). All scales are similar in shape, lack a keel, and are approximately 7–8  $\mu\text{m}$  long. None of the scales are imbricated. Two columns of ventral scales are present at the midline between the ciliary fields (Figs 1, 2C). The scales are relatively small, ca. 4–5  $\mu\text{m}$  long, and oriented in a herringbone pattern in most specimens, with the anterior end of both scales farther apart from each other (ca. 5  $\mu\text{m}$ ) relative to their posterior ends (ca. 2–3  $\mu\text{m}$ ). While the herringbone pattern is evident in all specimens, some specimens had individual scales (not an entire column) oriented in a more parallel fashion (e.g., see Fig 2C); this may be evidence of individual variation in scale orientation. There was approximately 4–5  $\mu\text{m}$  of space between each column and its adjacent ciliary field.



**Figure 2.** Light micrographs of *Lepidodasys ligni* sp. n. (holotype). **A** Dorsal view **B** Closeup of anterior end with differential interference contrast (DIC) **C** Ventral view of anterior end with DIC. Abbreviations: **co** caudal organ; **is** intercalary scales; **lc** locomotory cilia; **mo** mouth; **TbA** anterior adhesive tubes; **TbL** lateral adhesive tubes.

**Adhesive tubes.** Anterior adhesive tubes (TbA) distributed as a posteriorly curving arc of seven to eight tubes, 3–4 µm long, from the midline to the lateral body wall (Fig. 2C). Lateral adhesive tubes (TbL) absent from the pharyngeal region (Fig. 1). Fourteen to seventeen TbL present in the trunk region, 8–10 µm long, beginning at



**Figure 3.** The reproductive and muscular systems of *Lepidodasys ligni* sp. n. **A** Differential interference contrast photograph of the posterior end showing the accessory reproductive organs. **B**, **C** Confocal images ( $47 \times 0.35 \mu\text{m}$  optical sections) of the musculature of the posterior end in lateral (**B**) and dorsal (**C**) views **D** Closeup of the caudal organ with DIC microscopy **E** Lateral view of an entire specimen revealing the muscular system ( $73 \times 0.4 \mu\text{m}$  optical sections). Abbreviations: **cg** caudal gland; **cm-co** circular muscles of the caudal organ; **cm-pc** circular muscles of the posterior constriction; **co** caudal organ; **coc** caudal organ canal; **dllm** dorsal lateral longitudinal muscle; **dllm** dorsal lateral longitudinal muscle; **fo** frontal organ; **hm** helicoidal muscle (end position on midgut); **lh** lateral sensory hair; **ph** pharynx; **TbP** posterior adhesive tube; **scm** somatic circular muscles (throughout trunk); **vllm** ventrolateral longitudinal muscle.

U28 and extending to the second body constriction. Tubes are spaced evenly down most of the trunk. A single tube is present in the demarcated region of the caudal organ, around U92. Approximately eleven evenly spaced dorsal adhesive tubes (TbD), 8–10  $\mu\text{m}$  long, beginning at U28 and extending to  $\sim$ U90. Eight posterior adhesive tubes (TbP), 9–10  $\mu\text{m}$  long, distributed as four adhesive tubes per side on rounded caudum.

**Digestive tract.** Small terminal mouth to 5  $\mu\text{m}$  wide (Fig. 2B). Pharynx to 20  $\mu\text{m}$  wide and 90  $\mu\text{m}$  long. Pharyngo-intestinal junction at U20. No pharyngeal pores observed. Intestine narrow and tapering toward posterior end. Diatoms present in a single specimen. Anus at U78.

**Reproductive system.** Neither testes or ovaries observed. A single large egg, approximately 62  $\mu\text{m}$  diameter, was present in one adult (holotype). A clear, sac-like organ interpreted as the frontal organ was present at U81–83; the organ was approximately 22  $\mu\text{m}$  x 16  $\mu\text{m}$  in diameter and in a single specimen appeared to contain filiform sperm. A caudal organ was present at the posterior end (U83–95), approximately 63  $\mu\text{m}$  long x 30  $\mu\text{m}$  wide (range: 50  $\mu\text{m}$ –63  $\mu\text{m}$  long, 24  $\mu\text{m}$ –30  $\mu\text{m}$  wide), hyaline in appearance with a straight central canal that extends along the organ's anterior-posterior axis; the canal appears sclerotic (coc, Fig. 3D). The caudal organ is muscular. The muscle cells interdigitate to form spindle-shaped, incomplete circular fibers (Fig. 3B). A single gland, ca. 10  $\mu\text{m}$  in diameter, is present posterior of the caudal organ (Fig. 3A,D).

**Muscular system.** Musculature present as circular, helicoidal and longitudinal bands. Pharynx strongly invested with splanchnic circular muscles and overlain by helicoidal bands and longitudinal muscles (Fig. 3E). The number of individual circular muscles and helicoidal bands could not be determined. In the trunk region, the helicoidal muscles extend to ca. U40 (Fig. 3E). Longitudinal muscles extend from the pharyngeal region to the caudum as three pairs of dorsal (dlm)/dorsolateral (dllm) bands (Fig. 3E). The ventrolateral longitudinal muscles (vllm) are the thickest muscles in the body and extend from ca. U03 to the caudal end (Fig. 3E). Three pairs of ventral longitudinal bands extend from the pharynx to the posterior end. All longitudinal muscles in the trunk region are surrounded by somatic circular muscles (scm) that form numerous, distinct rings down the length of the body (Fig. 3E). Beginning ca. U80–81, there is a large number (>30) of closely spaced somatic circular muscles that extend posteriorly for approximately 40  $\mu\text{m}$ ; the circular muscles demarcate the posterior region of the body (cm-pc) with the accessory sexual organs (Figs 1, 3B,C).

## Taxonomic remarks

The genus *Lepidodasys* consists of eight described species and several undescribed specimens from marine waters across the globe (see Hummon 2009), from as far north as the Faroe Islands (Clausen 2004) to locations along the European coastline (e.g., Remane 1926; Fregni et al. 1999; Clausen 2000; Hummon 2009) including the Baltic and Mediterranean seas (Roszczac 1939; Balsamo et al. 1994; Hummon 2009), to



the Pacific waters of Japan (Lee and Chang 2011) and Hawaii (Hummon 2009), and to the Caribbean waters of Panama (Hochberg and Atherton 2011) and the Gulf of Mexico (Todaro et al. 1995).

Species of *Lepidodasys* are most easily distinguished by their slow gliding movement and their heavily sculptured cuticle, which in general consists of rounded or elliptical scales across most of their body. The shape and distribution of the scales are important taxonomic characters for distinguishing the species. Of the eight described species, six species have a crossed helical pattern (parallel pattern *sensu* Lee and Chang 2011) of scales across their dorsum: *L. arcolepis* Clausen, 2004, *L. castorooides* Clausen, 2004, *L. platyurus* Remane, 1927, *L. tsushimaenensis* Lee & Chang, 2011, *L. wor-saae* Hochberg & Atherton, 2011, and *L. unicarenatus* Balsamo, Fregni & Tongiorgi, 1994. The species from Florida, *L. ligni* sp. n., also bears a crossed helical pattern of scales on its dorsum. The ventral intercalary scales are in a herringbone pattern in the new species, similar to the scale arrangement in *L. laeviacus* Lee & Chang, 2011.

Apart from scale pattern, scale shape is also an important taxonomic character, and the new species can easily be distinguished by the smooth (non-keeled) structure of its scales. The only other species with smooth scales are *L. castorooides*, *L. laeviacus* and *L. tsushimaenensis*. Among these species, *L. ligni* sp. n. is most similar to *L. castorooides* and *L. tsushimaenensis* in general body shape and the presence of a large caudal organ in the posterior body region. While all three species are similarly slender, *L. tsushimaenensis* is much larger (to 730  $\mu\text{m}$ ) than the other two species (*L. castorooides* to 475  $\mu\text{m}$  and *L. ligni* sp. n. to 450  $\mu\text{m}$ ) and lacks the notable indentation at the posterior end that demarcates the region of the accessory sexual organs. In fact, the caudal indentation gives both *L. castorooides* and *L. ligni* sp. n. the appearance of possessing a beaver-like tail, hence Clausen's (2004) specific Latin epithet, *castor*. While both species possess similar "beaver tails" and caudal organs, there are several notable differences between the species: 1) the caudal organ of *L. castorooides* possesses a cuticular endpiece that is absent in the new species; 2) there are five TbA per side in *L. castorooides* but 7 to 8 TbA per side in *L. ligni* sp. n.; 3) there are seven pairs of TbVL in *L. castorooides* but up to 17 TbL per side (not TbVL) in the new species; and 4) there are five pairs of TbDL in *L. castorooides* but up to eleven pairs of TbD in *L. ligni* sp. n.

## Discussion

In addition to our taxonomic findings, this study revealed novel information on the muscular system of the new species. In contrast to previous reports (e.g., Ruppert 1978; Travis 1983), we observed somatic circular muscles in the trunk region of *Lepidodasys* (see Fig. 3E). Whether these muscles are absent from the previously examined species or were missed in examinations of their sections using transmission electron microscopy is unknown. Interestingly, the presence of a dense aggregation of somatic circular muscles in the caudal region of the new species is correlated with the position of the indentation at the posterior end, which imparts the beaver-tail like appearance.

Phalloidin staining and CLSM revealed a higher number (30–40) and density (~ 1 circular muscle per 1  $\mu\text{m}$  body length) of somatic circular muscles in this constricted area compared to the main trunk of the animal (11 circular muscles in 40  $\mu\text{m}$  body length, ~ 0.3 circular muscles per 1  $\mu\text{m}$ ). It is important to state that the circular muscles in the region are likely not the cause of the constriction since this area remains delineated even when the animal is relaxed with an anaesthetic (isotonic  $\text{MgCl}_2$ ). Curiously, the muscles of this region also appear to encircle the frontal organ, and may therefore play a role in reproduction. While the identity of the frontal organ in the new species is not certain (only 1 specimen appeared to have filiform sperm within the organ), its presence near the anterior end of the caudal organ is strong correlational evidence for its identity (see also *L. castorooides* (Clausen 2004) and *L. tsushimaensis* (Lee and Chang 2011)). In *L. ligni* sp. n., the frontal organ abuts the caudal organ; the circular muscles of the caudal organ are part of the organ itself and therefore independent of the somatic circular muscles anterior to it. How these two organs function together or separately in the uptake of allosperm or release of autosperm, respectively, is unknown and will likely require a detailed investigation with transmission electron microscopy as has been performed for other macrodasyidan gastrotrichs (e.g., Ruppert 1978, 1991; Guidi et al. 2004, 2011; Kieneke et al. 2012; Todaro et al. 2012).

## Acknowledgements

The authors acknowledge the helpful comments of Dr. Alexander Kieneke and Dr. M. Antonio Todaro. The authors also thank the staff at the Smithsonian Marine Station in Fort Pierce, Florida for their assistance in collection. This research was funded by an award from the National Science Foundation (DEB 0918499) to Dr. Rick Hochberg. This is Smithsonian Marine Station contribution number 908.

## References

- Atherton S, Hochberg R (2012) *Tetranchyroderma bronchostylus* sp. nov: the first known gastrotrich (Gastrotricha) with a sclerotic canal in the caudal organ. *Marine Biology Research* 8: 885–892. doi: 10.1080/17451000.2012.676187
- Balsamo M, Fregni E, Tongiorgi P (1994) Marine and freshwater Gastrotricha from the island of Montecristo (Tuscan Archipelago, Italy), with the description of new species. *Italian Journal of Zoology* 61: 217–227.
- Balsillie JH, Donoghue JF, Butler KM, Koch JL (2002) Plotting equation for Gaussian percentiles and a spreadsheet program for generating probability plots. *Journal of Sedimentary Research* 72: 929–933. doi: 10.1306/040402720929
- Clausen C (2000) Gastrotricha Macrodsyida from the Tromsø region, northern Norway. *Sarsia* 85: 357–384.

- Clausen C (2004) Gastrotricha from the Faroe Bank. *Sarsia* 85: 423–458. doi: 10.1080/00364820410002677
- Fregni E, Faienza MG, De Zio Grimaldi S, Tongiorgi P, Balsamo M (1999) Marine gastrotrichs from the Tremiti Archipelago in the southern Adriatic Sea, with the description of two new species of *Urodasys*. *Italian Journal of Zoology* 66: 183–194. doi: 10.1080/11250009909356254
- Guidi L, Pierboni L, Ferraguti M, Todaro MA, Balsamo M (2004) Spermatology of the genus *Lepidodasys* Remane, 1926 (Gastrotricha, Macrodasysida): towards a revision of the family Lepidodasysidae Remane, 1927. *Acta Zoologica* 85: 211–221. doi: 10.1111/j.0001-7272.2004.00172.x
- Guidi L, Todaro MA, Ferraguti M, Balsamo M (2011) Reproductive system of the genus *Crasiella* (Gastrotricha, Macrodasysida). *Helgoland Marine Research* 65: 175–185. doi: 10.1007/s10152-010-0213-4
- Hochberg R (2008) Gastrotricha of Bocas del Toro, Panama: A preliminary report. *Meiofauna Marina* 16: 101–107.
- Hochberg R (2010) New species of *Oregodasys* (Gastrotricha: Macrodasysida) from Carrie Bow Cay, Belize with an ultrastructural description of the epidermal glandular system. *Zootaxa* 2660: 1–17
- Hochberg R, Atherton S (2010) *Acanthodasys caribbeanensis* sp. n., a new species of Thaumastodermatidae (Gastrotricha, Macrodasysida) from Belize and Panama. *Zookeys* 61: 1–10. doi: 10.3897/zookeys.61.552
- Hochberg R, Atherton S (2011) A new species of *Lepidodasys* (Gastrotricha, Macrodasysida) from Panama with a description of its peptidergic nervous system using CLSM, anti-FMRFamide and anti-SCPb. *Zoologischer Anzeiger* 250: 111–122. doi: 10.1016/j.jcz.2010.12.002
- Hummon WD (2009) Global database for marine Gastrotricha (Taxonomic, Geographic, Bibliographic and Video). Server: <http://132.235.243.28> or <http://hummon-nas.biosci.ohiou.edu>
- Hummon WD (2010) Marine Gastrotricha of the Caribbean Sea: A review and new descriptions. *Bulletin of Marine Science* 86: 661–708.
- Hummon WD, Todaro MA (2010). Analytic taxonomy and notes on marine, brackish-water and estuarine Gastrotricha. *Zootaxa* 2392: 1–32.
- Kieneke A, Martínez Arbizu P, Ahlrichs WH (2012) Anatomy and ultrastructure of the reproductive organs in *Dactylopodola typhle* (Gastrotricha: Macrodasysida) and their possible functions in sperm transfer. *Invertebrate Biology* 127: 12–32. doi: 10.1111/j.1744-7410.2007.00111.x
- Kieneke A, Narkus S, Hochberg R, Schmidt-Rhaesa A (2013a) *Diplodasys rothei* n. sp. (Gastrotricha, Macrodasysida), a new marine gastrotrich species from the Bahamas. *Meiofauna Marina* 20: 49–62.
- Kieneke A, Rothe BH, Schmidt-Rhaesa A (2013b) Record and description of *Anandrodasys agadasys* (Gastrotricha: Redudasyidae) from Lee Stocking Island (Bahamas), with remarks on populations from different geographic areas. *Meiofauna Marina* 20: 39–48.

- Lee J, Chang CY (2011) First record of the genus *Lepidodasys* (Gastrotricha, Lepidodasyidae) in the Pacific, with the description of two new species from Tsushima Island, Japan. *Journal of Natural History* 45: 855–867. doi: 10.1080/00222933.2010.536266
- Remane A (1926) Morphologie und Verwandtschaftsbeziehungen der aberranten Gastrotrichen I. *Zeitschrift für Morphologie und Ökologie der Tiere* 5: 625–754.
- Remane A (1927) Neue Gastrotricha Macrodasyoidea. *Zoologische Jahrbuecher Abteilung fuer Systematik Oekologie und Geographie der Tiere* 54: 203–242.
- Roszczak R (1939) Die Psammitgastrotricha des polnischen Ostseestrandes. *Zoologica Poloniae* 4(1): 1–24.
- Ruppert EE (1978) The reproductive system of gastrotrichs. III. Genital organs of Thaumastermatinae subfam. n. and Diplodasyinae subfam. n. with discussion of reproduction in Macrodasysida. *Zoologica Scripta* 7: 93–114. doi: 10.1111/j.1463-6409.1978.tb00592.x
- Ruppert EE (1991) Gastrotricha. In: Harrison F, Ruppert EE (Eds) *Microscopic Anatomy of Invertebrates*, Volume 4, Aschelminthes. Wiley-Liss, Inc., Washington, 41–109.
- Todaro MA, Fleeger JW, Hummon WD (1995) Marine gastrotrichs from the sand beaches of the northern Gulf of Mexico: species list and distribution. *Hydrobiologia* 310: 107–117. doi: 10.1007/BF00015529
- Todaro MA, Guidi L, Ferraguti M, Balsamo M (2012) A fresh look at *Dinodasys mirabilis* (Gastrotricha, Macrodasysida), with a focus on the reproductive apparatus and sperm ultrastructure. *Zoomorphology* 131: 115–125. doi: 10.1007/s00435-012-0147-2
- Todaro MA, Leasi F (2013) A new eye-bearing *Macrodasys* (Gastrotricha: Macrodasysida) from Jamaica. *Meiofauna Marina* 20: 33–38.
- Travis PB (1983) Ultrastructural study of body wall organization and Y-cell composition in the Gastrotricha. *Zeitschrift für zoologie Systematik und Evolutionsforschung* 21: 52–68.