

# **Applied Microbiology and Biotechnology: Supplemental Material**

## **Effects of *Leishmania major* infection on the gut microbiome of resistant and susceptible mice**

**Jakub Mrázek <sup>1</sup>, Lucie Mrázková <sup>2,3</sup>, Chahrazed Mekadim <sup>1\*</sup>, Tat'ána Jarošíková <sup>3</sup>, Imtissal Krayem <sup>2</sup>, Yahya Sohrabi<sup>2,5,6</sup>, Peter Demant <sup>4</sup>, Marie Lipoldová <sup>2,3,5</sup>**

<sup>1</sup> Laboratory of Anaerobic Microbiology, Institute of Animal Physiology and Genetics of the Czech Academy of Sciences, Videnska 1083, 142 20, Prague, Czech Republic.

<sup>2</sup> Laboratory of Molecular and Cellular Immunology, Institute of Molecular Genetics of the Czech Academy of Sciences, Videnska 1083, 142 20, Prague, Czech Republic.

<sup>3</sup> Faculty of Biomedical Engineering, Czech Technical University in Prague, namestí Sitna 3105, 272 01 Kladno, Czech Republic.

<sup>4</sup> Department of Molecular and Cellular Biology, Roswell Park Comprehensive Cancer Center, Buffalo, New York 14263, USA.

<sup>5</sup> Department of Medical Genetics, 3<sup>rd</sup> Faculty of Medicine, Charles University, Ruská 87, 100 00 Prague 10, Czech Republic

<sup>6</sup> Department of Cardiology I-Coronary and Peripheral Vascular Disease, Heart Failure, University Hospital Münster, Westfälische Wilhelms-Universität, Münster, Germany.

### **\* Correspondence:**

Chahrazed Mekadim

[mekadim@iapg.cas.cz](mailto:mekadim@iapg.cas.cz)

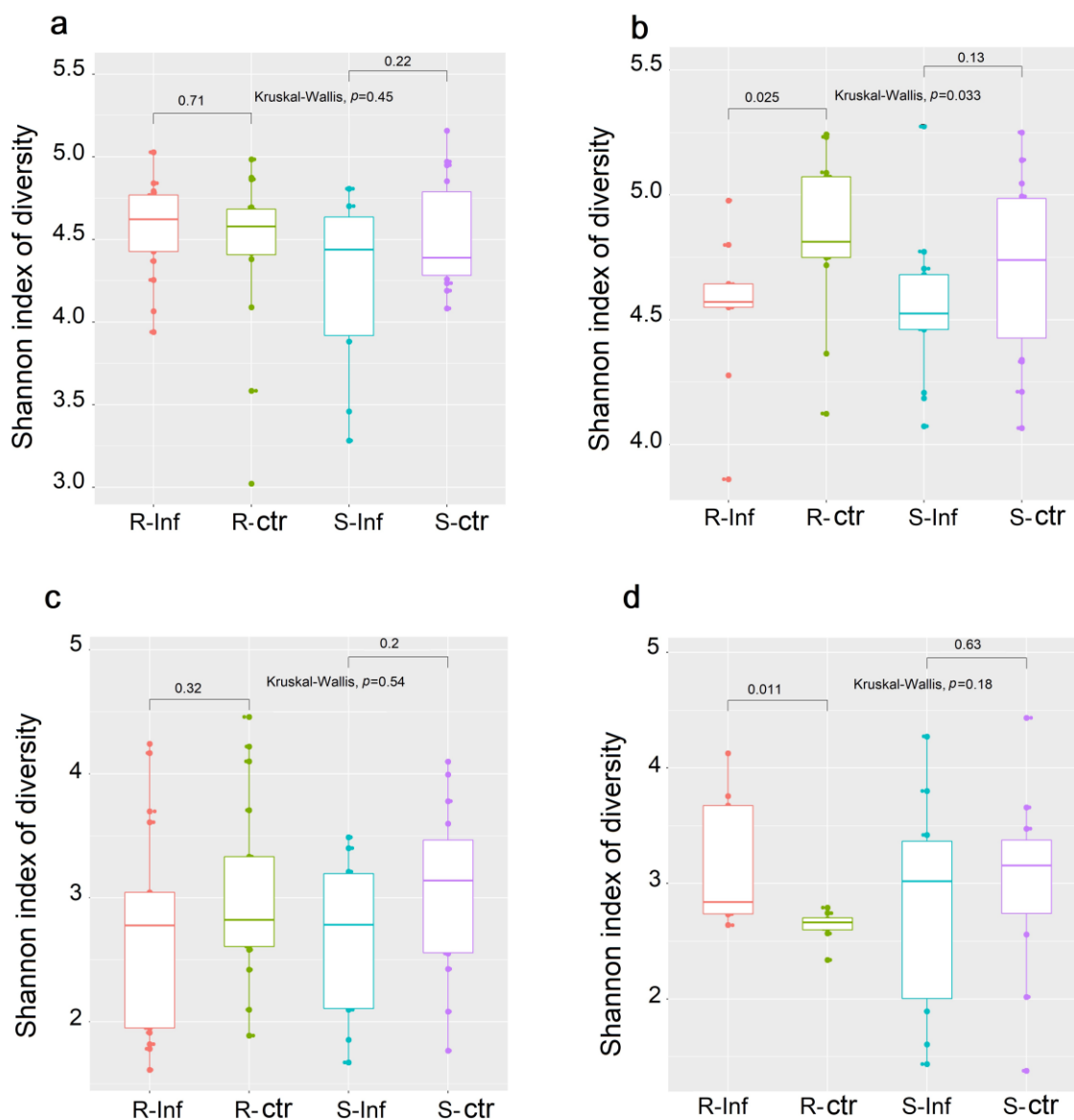
Phone : +420 267 090 501

Fax: +420 267 090 500

Address: Laboratory of Anaerobic Microbiology, Institute of Animal Physiology and Genetics of the Czech Academy of Sciences, Videnska 1083, 142 20, Prague, Czech Republic

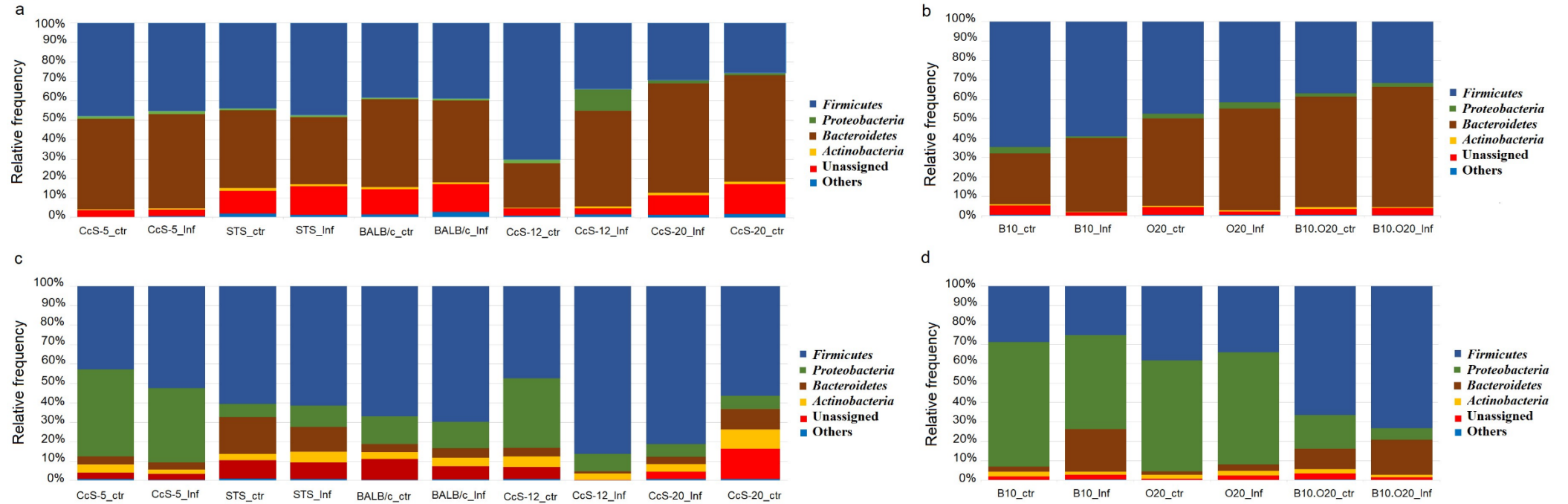
## Supplementary figure and legends

Figure S1



**Fig. S1** Microbiota alpha diversity (shannon index) among different groups (susceptibles/resistants) of infected or non-infected mice in: a) colon of CcS/Dem, b) colon of OcB/Dem, c) ileum of CcS/Dem and d) ileum of OcB/Dem. ( $p$ -value  $\leq 0.05$ ) was considered statistically significant. [R\_Inf: infected resistant, R\_ctr: resistant control (non-infected), S\_Inf: infected susceptible, S\_ctr: susceptible control (non-infected)].

Figure S2



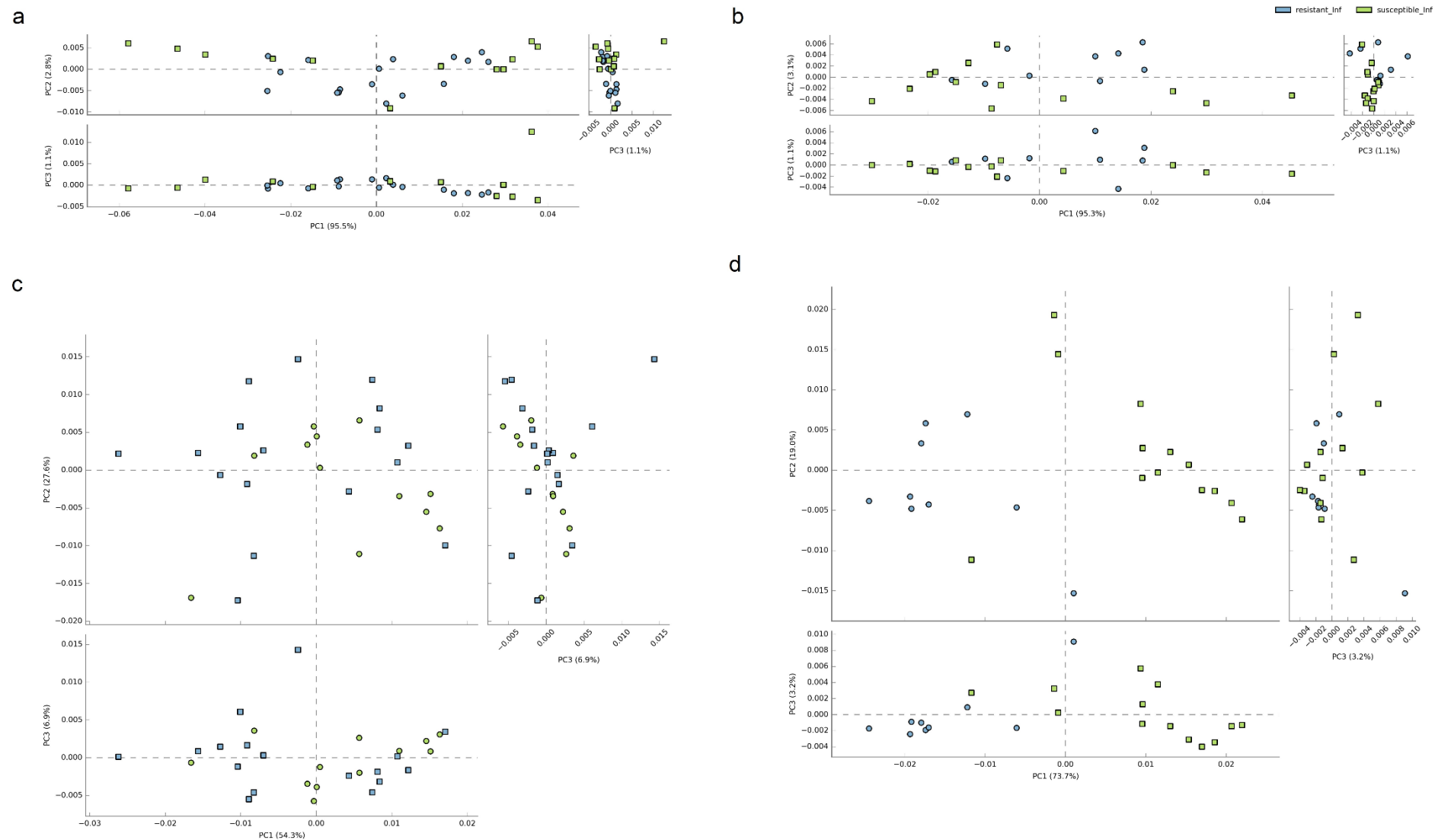
**Fig. S2** Relative abundance of the microbial population at the phylum level among different groups (susceptibles/ resistants) of infected or non-infected mice in: a) colon of CcS/Dem, b) colon of OcB/Dem, c) ileum of CcS/Dem and d) ileum of OcB/Dem. [Inf: infected, ctr: control (non-infected)]

Figure S3



**Fig. S3** Extended error bar plot showing the mean proportion (%) of significantly different predicted functional categories at second-level KEGG pathway between infected susceptible mice (in green) and infected resistant mice (in blue) in a) ileum of OcB/Dem, b) colon of OcB/Dem, c) ileum of CcS/Dem and d) colon of CcS/Dem. The values on the right show the corrected *p*-values that were derived from a Welch's *t*-test with the confidence interval method of Welch's inverted adjustment of 0.95 ( $p\text{-value} \leq 0.05$ ) was considered statistically significant. [Resistant\_Inf: infected resistant, Susceptible\_Inf: infected susceptible].

Figure S4



**Fig. S4** Principal component analysis (PCA) plot of distances between second-level KEGG pathway profiles of infected susceptible mice (in green) and infected resistant (in blue) using the STAMP software based on Non-corrected Welch's *t*-test type two-sided, with the confidence interval (CI) method of Welch's inverted adjustment of 0.95 ( $p$ -value  $\leq 0.05$ ) was considered statistically significance. a) colon of CcS/Dem, b) colon of OcB/Dem, c) ileum of CcS/Dem and d) ileum of OcB/Dem. [Resistant\_Inf: infected resistant, Susceptible\_Inf: infected susceptible].