

RESEARCH ARTICLE

Open Access

Complex evolutionary history of the Mexican stoneroller *Campostoma ornatum* Girard, 1856 (Actinopterygii: Cyprinidae)

Omar Domínguez-Domínguez^{1*}, Marta Vila², Rodolfo Pérez-Rodríguez^{1,3}, Nuria Remón² and Ignacio Doadrio⁴

Abstract

Background: Studies of the phylogeography of Mexican species are steadily revealing genetic patterns shared by different species, which will help to unravel the complex biogeographic history of the region. *Campostoma ornatum* is a freshwater fish endemic to montane and semiarid regions in northwest Mexico and southern Arizona. Its wide range of distribution and the previously observed morphological differentiation between populations in different watersheds make this species a useful model to investigate the biogeographic role of the Sierra Madre Occidental and to disentangle the actions of Pliocene tecto-volcanic processes vs Quaternary climatic change. Our phylogeographic study was based on DNA sequences from one mitochondrial gene (*cytb*, 1110 bp, n = 285) and two nuclear gene regions (*S7* and *RAG1*, 1822 bp in total, n = 56 and 43, respectively) obtained from 18 to 29 localities, in addition to a morphological survey covering the entire distribution area. Such a dataset allowed us to assess whether any of the populations/lineages sampled deserve to be categorised as an evolutionarily significant unit.

Results: We found two morphologically and genetically well-differentiated groups within *C. ornatum*. One is located in the northern river drainages (Yaqui, Mayo, Fuerte, Sonora, Casas Grandes, Santa Clara and Conchos) and another one is found in the southern drainages (Nazas, Aguanaval and Piaxtla). The split between these two lineages took place about 3.9 Mya (CI = 2.1-5.9). Within the northern lineage, there was strong and significant inter-basin genetic differentiation and also several secondary dispersal episodes and gene homogenization between drainages. Interestingly, three divergent mitochondrial lineages were found in sympatry in two northern localities from the Yaqui river basin.

Conclusions: Our results indicate that there was isolation between the northern and southern phylogroups since the Pliocene, which was related to the formation of the ancient Nazas River paleosystem, where the southern group originated. Within groups, a complex reticulate biogeographic history for *C. ornatum* populations emerges, following the taxon pulse theory and mainly related with Pliocene tecto-volcanic processes. In the northern group, several events of vicariance promoted by river or drainage isolation episodes were found, but within both groups, the phylogeographic patterns suggest the occurrence of several events of river capture and fauna interchange. The Yaqui River supports the most diverse populations of *C. ornatum*, with several events of dispersal and isolation within the basin. Based on our genetic results, we defined three ESUs within *C. ornatum* as a first attempt to promote the conservation of the evolutionary processes determining the genetic diversity of this species. They will likely be revealed as a valuable tool for freshwater conservation policies in northwest Mexico, where many environmental problems concerning the use of water have rapidly arisen in recent decades.

* Correspondence: goodeido@yahoo.com.mx

¹Laboratorio de Biología Acuática, Facultad de Biología, Universidad Michoacana de San Nicolás de Hidalgo, Morelia, Michoacán, México
Full list of author information is available at the end of the article

Background

The relative role of geology and ecology in driving lineage differentiation, and ultimately speciation, has been an important topic in evolutionary biology since the 19th century. At present, it is a thriving field of research aiming to disentangle the relative importance of glacial refugia, extrinsic environmental factors and species interactions, aided to the ability of locating species boundaries, phylogeographical breaks and hybrid zones [1].

Montane ecosystems are areas of high endemism, and the mechanisms driving this endemism have been receiving increasing attention. For instance, endemism in tectonically active regions should reflect cladogenesis within the montane region, rather than the contraction of geographic range from a much larger region ([2], but see also [3]). Additionally, climatic factors have been rejected as the only explanation for the species richness of taxa within small to medium-sized geographic ranges; thus, both geological and evolutionary processes must be considered [4]. Molecular studies of montane Mexican taxa often revealed complex phylogeographical patterns, and those high levels of genetic divergence suggest an underestimation of the level of endemism in the Mexican highlands, implying that more surveys in other co-distributed taxa are needed to achieve a better understanding of the evolutionary drivers of diversification in these regions [5].

What is clear at the present time is that the evolutionary history of many Meso- and North American taxa is linked to the severe geological (tectonic and volcanic) and environmental changes that occurred during the Neogene and Quaternary periods [3,6,7]. The challenge now is to distinguish the relative contribution of each factor to the observed phylogeographic pattern. The number of studies that have been conducted in the Mexican endemic-rich area of the northern sierras is lower than the number of studies of the Trans-Mexican Volcanic Belt (TMVB) (e.g., [8]). Therefore, one of the main contributions of the present work is to investigate the biogeographic role of the Sierra Madre Occidental (SMOC) using an endemic freshwater species. The SMOC may have acted as either a barrier where current admixture of lineages can occur, as a corridor for range expansion or as a centre of diversification, promoting allopatric differentiation.

Biogeographic role of the Sierra Madre Occidental

The SMOC is a large volcanic plateau in western Mexico that extends parallel to the Pacific coastline for more than 1200 km from the US-Mexico border (31° N) to the TMVB (21° N). The topography of the northern Sierra Madre is characterised by a high

average elevation (1909 m). In contrast to other North American mountain systems, the topographic relief of the SMOC is not the product of elevated mountain ranges, but rather of incised canyons. The western edge is quite steep, while the eastern topographic gradients from the Sierra Madre into the central Mexican Plateau are relatively smooth [9].

The SMOC is thought to form an important corridor of dispersal for tropical flora and fauna moving in response to climatic change [10,11]. This mountain system is one of the 14 biogeographic provinces of Mexico and one of the five biogeographic provinces of the so-called Mexican Transition Zone, mainly defined by the plant and animal taxa that are found above 1000 m. This province has the highest Nearctic influence [11].

The SMOC is the result of Cretaceous-Cenozoic magmatic and tectonic episodes related to the subduction of the Farallon plate beneath North America and to the opening of the Gulf of California. During the Oligocene, extensional tectonics (processes associated with the stretching of the lithosphere) began in the entire eastern half of the SMOC, migrating towards the west during the Miocene [12]. The resulting post-Oligocene river capture has been inferred from geological data from the southern flank of the Tepic-Zacoalco rift (southern SMOC), although more recent piracy phenomena have been reported in other areas ([13] and references therein) or suggested by phylogeographic studies (e.g., [14]).

To the best of our knowledge, the phylogeography of ichthyofauna endemic to the SMOC has not been thoroughly investigated, although population genetics surveys have been conducted for *Oncorhynchus chrysogaster* ([15] and references therein) and *Poeciliopsis sonorensis* [16]. As pointed out by recent literature [5], there are only a limited number of surveys on the genetic structure of endemic species from the North and Mesoamerican mountains (e.g., [17,18]).

We consider two alternative biogeographic scenarios. Given the fact that the SMOC acts as a biogeographic barrier for many taxa, a plausible first hypothesis would be that the phylogeographic pattern of *Campostoma ornatum* would result from the current admixture of formerly West and East lowland lineages isolated during the Pleistocene interglacial stages [19-22]. If so, we would expect to find major lineages located on the northwestern and southeastern slopes and an altitudinal gradient of haplotype diversity. A second putative role for the SMOC would be as a centre of diversification, related to a working hypothesis of a highland distribution of *C. ornatum* predating the Quaternary ice ages. Under such a scenario, deep genetic and morphological divergences between the study species would have been

shaped by geological processes rather than by climatic oscillations. Additionally, extensional tectonics causing river piracy (a geomorphological phenomenon occurring when a stream or river drainage system is diverted from its own bed and connects with the one of a neighbouring stream) would cause a mismatch between the actual conformation of river drainages and genetic patterns.

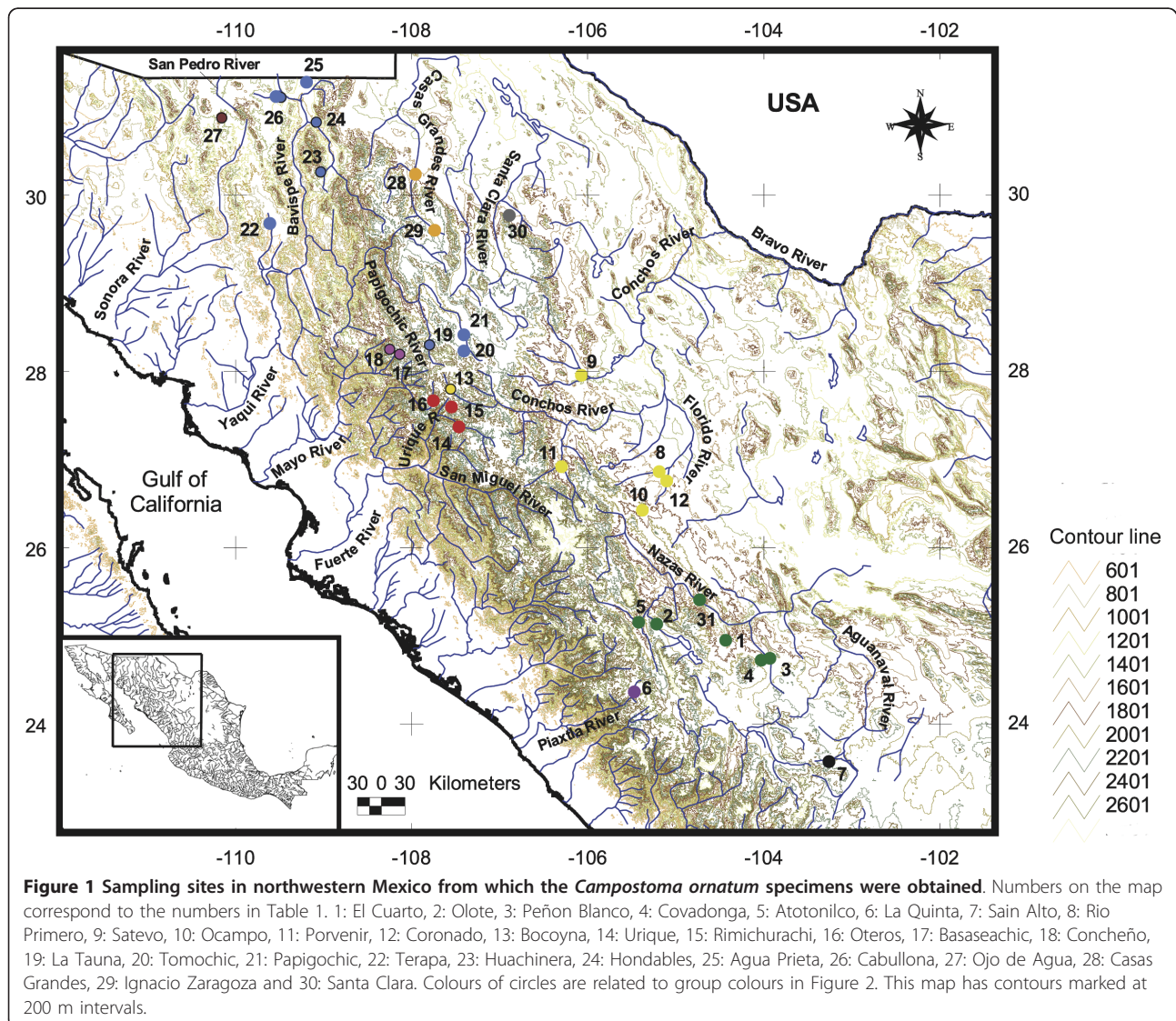
Study species

To study the biogeographic role of the SMOC on its ichthyofauna, we selected the Mexican stoneroller, *Campostoma ornatum*, as our model organism. The Mexican stoneroller is endemic to the central and northern sectors of the SMOC and its northern fringes (Madrean Sky-Islands). It is found on both slopes of the SMOC: in the Bravo and Conchos Rivers, as well as in the Casas Grandes and Santa Clara (also known as El Carmen)

interior drainages and the upper parts of the Yaqui, Mayo and Fuerte north-western Pacific River basins. The southernmost basins where *C. ornatum* is present are the interior Nazas and Aguanaval Rivers and the Pacific Piaxtla River basin [23] (Figure 1).

The widespread distribution of *C. ornatum* is thought have been shaped by tectonics (stream capture between adjacent drainages) and climatic changes (dispersion via periodically formed floodplains or the connection or succession of pluvial lakes during glacial stages) [24]. Its distribution area (the elevation range of the species is 800 - 2000 m a.s.l.) coincides with a biodiversity hot-spot, the the Madrean Pine-Oak Woodlands [25].

Several cyprinid species for which deep intraspecific genetic divergence has been previously reported exist in large areas severely influenced by both tecto-volcanic activity and climatic changes [26-28]. In fact, some of



those widespread species have been split into more than one taxon, in light of their genetic divergence and morphological differentiation [14,29,30]. This was the case for *Campostoma anomalum*, which was previously regarded as a complex of three widespread and morphologically divergent subspecies, whose five distinct evolutionary lineages warranted species status [31,32]. The species *Campostoma ornatum*, also with a wide distribution range and morphological variation, is also likely to show deep intraspecific genetic differentiation because populations from southern drainages (Nazas, Aguanaval and Piaxtla rivers) show a differentiated morphotype [24] and there is remarkable endemism in the ichthyofauna of the Nazas river [33,34].

Conservation perspective

Phylogeography also has an applied perspective from the conservation point of view. The genetic and morphological information obtained in the present work will be examined to define, if appropriate, evolutionarily significant units (ESUs) within *Campostoma ornatum*. The need to preserve the loss of *Campostoma* lineages restricted to areas where aquatic biodiversity is imperilled was already highlighted [31]. In addition, the populations of the Mexican stoneroller in the USA declined during the 20th century [35] and there were plans to perform reintroductions from Mexico [36].

At the present time, an ESU is essentially acknowledged to be a population or a group of populations that merit the separate management or priority of conservation because it is highly distinctive, according to the following criteria: (i) reproductive isolation and adaptation, (ii) reciprocal monophyly and (iii) "exchangeability" of populations. Concordance across multiple data types (e.g., genetic, morphological and geographic) is, of course, desirable (revised by [37]). Defining conservation units in endemic species may be of particular interest in densely populated countries, such as Mexico. This is because environmental problems concerning the use of water rapidly arise in semiarid regions, such as north-west Mexico [38,39], where the demand for water resources has dramatically increased in recent decades [40,41].

In the present study we aim to infer the evolutionary history of *C. ornatum* throughout its distribution area in order to determine the role of the SMOC on the evolutionary history of *C. ornatum* and to disentangle the action of tectonic-volcanic processes vs. climatic change. To do this, we applied phylogenetic and population genetic methods to sequence data obtained for a mitochondrial gene (cytochrome b, *cytb*) and two nuclear fragments (RAG1 and S7) from 18 to 29 locations within the distribution area of *C. ornatum*. In addition, we included several meristic characters to first

corroborate the morphological variation pattern previously observed [24] and second to investigate the putative association between genetic and phenotypic data. In line with our main objective, we also addressed the following question from the conservation perspective: do any of the populations/lineages sampled in different drainages deserve to be categorised as an (ESU) under the Adaptive Evolutionary Conservation (AEC) framework [42]?

Results

Genetic diversity

Sixty haplotypes were obtained by sequencing the *cytb* gene in the 285 samples collected in the current study (Table 1 and Figure 1). These haplotypes were defined by 160 variable sites within a 1110-bp sequence fragment (total number of mutations = 169). Twenty-three of those sites were singletons, and 137 substitutions were parsimony informative. Twenty-two changes involved amino acid replacements, and 147 were synonymous. Overall, haplotype diversity (h) was 0.964 ± 0.003 (standard deviation), nucleotide diversity (π) = 0.032 ± 0.001 , the average number of nucleotide differences (k) = 35.041 and Tajima's D = +0.895 (not significant) (Tables 2 and 3).

We sequenced the S7 nuclear gene in 56 specimens from 19 locations, representing all surveyed river basins. Twenty-eight of these individuals had between one and seven heterozygous positions. After haplotype reconstruction, 24 variants were defined by 36 variable sites (*plus* four indels) along the 843 bp of the final alignment (37 mutations in total). Two of the variable sites were singletons, and 34 substitutions were parsimony informative. Overall, haplotype diversity (h) was 0.862 ± 0.02 , nucleotide diversity (π) = 0.008 ± 0.001 , the average number of nucleotide differences (k) = 6.99 and Tajima's D = -0.066 (not significant). Fourteen sites showed insertion/deletion variation. Indel polymorphism was estimated in four indel events and haplotypes (average indel length event = 3.5, indel haplotype diversity = 0.169). When heterozygous positions are coded as unknown but gaps are kept as the fifth state, the number of haplotypes decreases to 15, defined by 18 variable sites (*plus* indels). Haplotype diversity (h) was reduced to 0.632 ± 0.068 , nucleotide diversity (π) = 0.0047 ± 0.0008 , the average number of nucleotide differences (k) = 3.84 and Tajima's D = -0.0602 (not significant). Three of the variable sites correspond to singletons, and 15 substitutions were parsimony informative.

The populations from Santa Clara (Santa Clara River basin) and El Olote (Nazas River basin) were the most diverse, as measured by the number of haplotypes, gene diversity and allelic richness (Table 2). Seven populations, scattered along the Fuerte, Mayo, Nazas, Yaqui

Table 1 Sampled localities and material analysed.

| Population | Locality and elevation (metres above sea level) | Drainage | Voucher | Genbank accession number | | |
|-----------------------|--|-----------|--|--|-------------------------------|-------------------------------|
| | | | | cyt b | S7 | RAG1 |
| 1.Cuarto (CUA) | San Juan River in the Cuarto area, San Juan del Río town, Durango, Mex. (1525) | Nazas | CPUM1530, CPUM6701-CPUM6709 | JF343058 (8), JF343059 (2) | JF343112 (1) | |
| 2.Olote (OLO) | Ramos River, El Olote town, Durango, Mex. (1652) | Nazas | CPUM6838-CPUM6843, CPUM6845-CPUM6849 | JF343039 (2), JF343041 (4), JF343042 (1), JF343070 (1), JF343071 (1), JF343072 (1), JF343073 (1) | JF343111 (1) | JF343114 (2) |
| 3.Peñón Blanco (PBY) | Stream outskirts of Peñón Blanco Town, Durango, Mex. (1739) | Nazas | CPUM1654, CPUM6554-CPUM6563 | JF343057 (10), JF343078 (1) | | |
| 4.Covadonga (COV) | Covadonga River, at Peñón Blanco Town, Durango, Mex. (1730) | | CPUM6889-CPUM6890, | | | |
| 5.Atotonilco (ATO) | Ramos River, Atotonilco town, Durango, Mex. (1693) | Nazas | CPUM6896-CPUM6898 | JF343057 (5) | JF343109 (1) | JF343114 (1) |
| | | Nazas | CPUM6727-CPUM6730, CPUM6752-CPUM6757 | JF343039 (1), JF343040 (1), JF343041 (7), JF343042 (1) | JF343113 (3) | JF343114 (2) |
| 6.Quinta (QNT) | Piaxtla River, La Quinta town, Durango, Mex. (2391) | Piaxtla | CPUM8902-CPUM8910, CPUM8927 | JF343042 (10) | JF343110 (1), JF343113 (2) | |
| 7.Sain Alto (SAA) | Sain Alto River near Atotonilco, Zacatecas, Mex. (1999) | Aguanaval | UAIC 7895.01 | DQ324062 | | |
| 8.Río Primero (RIP) | Primero River, road Torreón de Mata town, Chihuahua, Mex. (1720) | Conchos | CPUM1917-CPUM1919 | JF343055 (3) | JF343105 (1), JF343106 (1) | JF343116 (1), JF343120 (1) |
| 9.Satevo (SAT) | River at San Francisco Javier de Satevo town, Chihuahua, Mex. (1450) | Conchos | CPUM1993-CPUM1995 | JF343084 (2), JF343085 (1) | | |
| 10.Ocampo (OCA) | Villa Ocampo, Chihuahua, Mex. (1832) | Conchos | CPUM1955-CPUM1957 | JF343055 (2), JF343066 (1) | JF343104 (1) | JF343116 (1) |
| 11.Porvenir (POR) | El Porvenir River, road La Magdalena town-Balleza town, Chihuahua, Mex. (1579) | Conchos | CPUM6995-CPUM7004 | JF343055 (1), JF343056 (1), JF343079 (8) | JF343104 (1) | JF343116 (1) |
| 12.Coronado (COR) | Florido River at Villa Coronado town, Chihuahua, Mex. (1511) | Conchos | CPUM6911-CPUM6921 | JF343055 (10), JF343056 (1) | JF343107 (1) | JF343116 (1) |
| 13.Bocoyna (BCY) | Conchos River at Bocoyna town, Mex. Chihuahua, Mex. (2219) | Conchos | CPUM7231-CPUM7240 | JF343045 (10) | JF343106 (1) | |
| 14.Urique (URI) | Urique River road Guachochi town-Creel town, Chihuahua, Mex. (1647) | Fuerte | CPUM7077-CPUM7088 | JF343045 (12) | | |
| 15.Rimichurachi (RIM) | Cuzarare stream, at Rimichurachi town, S of Creel, Chihuahua, Mex. (2196) | Fuerte | CPUM7135-CPUM7136, CPUM7138-CPUM7145 | JF343081 (2), JF343082 (5), JF343083 (3) | | |
| 16.Oteros (OTE) | Oteros River Southwest to Creel town, Chihuahua, Mex. (2065) | Fuerte | CPUM7169, CPUM7172, CPUM7175-CPUM7182, CPUM7229-CPUM7230 | JF343074 (11), JF343075 (1) | JF343106 (1) | JF343116 (1) |
| 17.Basaseachic (BAS) | Aguacaliente River at Basaseachic town, Chihuahua, Mex. (2005) | Mayo | CPUM7392-CPUM7401 | JF343043 (9), JF343044 (1) | JF343103 (1) | JF343116 (1) |
| 18.Concheño (CON) | Concheño River, road El Placer town-Ocampo town, Chihuahua, Mex. (2225) | Mayo | CPUM7432-CPUM7436, CPUM7438-CPUM7443 | JF343043 (11) | | |
| 19.Tauna (TAU) | River at La Tauna town, Chihuahua, Mex. (1764) | Yaqui | CPUM7462-CPUM7471 | JF343043 (4), JF343086(5), JF343087 (1) | | |

Table 1 Sampled localities and material analysed. (Continued)

| | | | | | | |
|------------------------|--|---------------|---|--|-----------------------------|-----------------------------|
| 20.Tomochic (TOM) | Tomochic River at Tomochic town, Chihuahua, Mex. (2210) | Yaqui | CPUM7543-CPUM7550 | JF343076 (4), JF343092 (1), JF343093 (1), JF343094 (1), JF343095 (1) | | |
| 21.Papigochic (PAP) | Río Papigochic at ranch near to Pahuirachic, Chihuahua, Mex. (1764) | Yaqui | CPUM7328-CPUM7339 | JF343076 (11), JF343077 (1) | JF343101 (1) | JF343119 (1) |
| 22.Terapa (TER) | South of Moctezuma, Sonora, Mex. (558) | Yaqui | CPUM7883-CPUM7889, CPUM7891-CPUM7894 | JF343088 (3), JF343089 (6), JF343090 (1), JF343091 (1) | | |
| 23.Huachinera (HUA) | Bavispe River, Huachinera town, Sonora, Mex. (1062) | Yaqui | CPUM7669-CPUM7670, CPUM7674-CPUM7676, CPUM7678-CPUM7682 | JF343064 (10) | | |
| 24.Hondables (HON) | Bavispe River at Los Hondables, Morelos, Sonora, Mex. (857) | Yaqui | CPUM7800-CPUM7809 | JF343064 (9), JF343065 (1) | JF343100 (2) | JF343117 (1) |
| 25.Agua Prieta (PRI) | Stream road Agua Prieta city-Janos city, Sonora, Mex. (1113) | Yaqui | CPUM7768-CPUM7784 | JF343047 (4), JF343048 (8), JF343080 (5) | JF343100 (13) | JF343117 (7), JF343118 (4) |
| 26.Cabullona (CAB) | Cabullona River, road Agua Prieta city-Nacozari de García city, Sonora, Mex. (1134) | Yaqui | CPUM7843-CPUM7857 | JF343046 (5), JF343047 (3), JF343048 (6), JF343049 (1) | JF343099 (1), JF343100 (13) | JF343117 (10), JF343118 (1) |
| 27.Ojo de Agua (OJO) | Spring at road Cananea city-Bacoachi town, Sonora, Mex. (1386) | Sonora | CPUM7827-CPUM7836 | JF343067 (3), JF343068 (2), JF343069 (5) | JF343108 (3) | JF343118 (3), |
| 28.Casas Grandes (GRA) | Casas Grandes River at Hacienda San Diego, S of Casas Grandes city, Chihuahua, Mex. (1510) | Casas Grandes | CPUM7752-CPUM7761 | JF343060 (1), JF343061 (6), JF343062 (1), JF343063 (2) | JF343100 (4) | JF343117 (2) |
| 29.I. Zaragoza (ZAR) | Casas Grandes River at Ignacio Zaragoza town, Chihuahua, Mex. (2077) | C. Grandes | CPUM7562-CPUM7571 | JF343060 (4), JF343096 (1), JF343097 (4), JF343098 (1) | | |
| 30.Santa Clara (CLA) | Santa Clara River at San Lorenzo, East of Buenaventura, Chihuahua, Mex. (1524) | Santa Clara | CPUM7643-CPUM7644 | JF343050 (4), JF343051 (1), JF343052 (1), JF343053 (4), JF343054 (1) | JF343102 (2) | JF343115 (2) |

Acronyms used for each location as well as number of individuals from the same site sharing haplotype are indicated in parentheses.

Table 2 Measurements of genetic diversity for *Camptostoma ornatum* as revealed by 1110 bp of the mitochondrial *cytb* and calculated according to sampling location.

| Locality | River basin | <i>n</i> | <i>NH</i> | <i>S</i> | <i>h</i> | <i>R</i> | π | <i>k</i> | Tajima's <i>D</i> |
|-----------------------------|---------------|-----------|-----------|-----------|----------------------|--------------|------------------------|---------------|---------------------------|
| Atotonilco (ATO) | Nazas | 10 | 4 | 10 | 0.533 ± 0.180 | 0.892 | 0.0020 ± 0.0012 | 2.267 | -1.590 ^a |
| Basaseachic (BAS) | Mayo | 10 | 2 | 1 | 0.2 ± 0.154 | 0.300 | 0.0002 ± 0.0001 | 0.2 | -1.112 |
| Bocoyna (BCY) | Conchos | 10 | 1 | 0 | 0 | 0 | 0 | 0 | n.a. |
| Cabullona (CAB) | Yaqui | 15 | 4 | 44 | 0.733 ± 0.067 | 1.268 | 0.0174 ± 0.0021 | 19.333 | +1.837^a |
| Santa Clara (CLA) | Santa Clara | 10 | 5 | 7 | 0.8 ± 0.1 | 1.442 | 0.0019 ± 0.0004 | 2.089 | -0.659 |
| Concheño (CON) | Mayo | 11 | 1 | 0 | 0 | 0 | 0 | 0 | n.a. |
| Villa Coronado (COR) | Conchos | 11 | 2 | 4 | 0.182 ± 0.144 | 0.273 | 0.0007 ± 0.0005 | 0.727 | -1.712 ^d |
| Covadonga (COV) | Nazas | 5 | 1 | 0 | 0 | 0 | 0 | 0 | n.a. |
| El Cuarto (CUA) | Nazas | 10 | 2 | 1 | 0.356 ± 0.159 | 0.533 | 0.0003 ± 0.0001 | 0.356 | +0.015 |
| Casas Grandes (GRA) | Casas Grandes | 10 | 4 | 4 | 0.644 ± 0.152 | 1.100 | 0.0012 ± 0.0003 | 1.289 | -0.339 |
| Los Hondables (HON) | Yaqui | 10 | 2 | 1 | 0.2 ± 0.154 | 0.300 | 0.0002 ± 0.0001 | 0.2 | -1.112 |
| Huachinera (HUA) | Yaqui | 10 | 1 | 0 | 0 | 0 | 0 | 0 | n.a. |
| Villa Ocampo (OCA) | Conchos | 3 | 2 | 5 | 0.667 ± 0.314 | 1.000 | 0.003 ± 0.0014 | 3.333 | n.a. ^b |
| Ojo de Agua (OJO) | Sonora | 10 | 3 | 3 | 0.689 ± 0.104 | 1.158 | 0.0011 ± 0.0003 | 1.267 | +0.699 |
| El Olotte (OLO) | Nazas | 11 | 7 | 16 | 0.873 ± 0.089 | 1.642 | 0.0044 ± 0.0011 | 4.836 | -0.511 |
| Oteros (OTE) | Fuerte | 12 | 2 | 1 | 0.167 ± 0.134 | 0.250 | 0.0001 ± 0.0001 | 0.167 | -1.140 |
| Papigochic (PAP) | Yaqui | 12 | 2 | 2 | 0.167 ± 0.134 | 0.250 | 0.0003 ± 0.0002 | 0.333 | -1.4514 |
| Peñón Blanco-Yerbaniz (PBY) | Nazas | 11 | 2 | 1 | 0.182 ± 0.144 | 0.273 | 0.0002 ± 0.0001 | 0.182 | -1.128 |
| Porvenir (POR) | Conchos | 10 | 3 | 4 | 0.378 ± 0.181 | 0.600 | 0.0007 ± 0.0004 | 0.8 | -1.667 ^a |
| Agua Prieta (PRI) | Yaqui | 17 | 3 | 42 | 0.676 ± 0.064 | 1.132 | 0.0166 ± 0.0023 | 18.382 | +1.847^a |
| La Quinta (QNT) | Piaxtla | 10 | 1 | 0 | 0 | 0 | 0 | 0 | n.a. |
| Rimichurachi (RIM) | Fuerte | 10 | 3 | 2 | 0.689 ± 0.104 | 1.158 | 0.0009 ± 0.0001 | 1.022 | +1.439 |
| Primero (RIP) | Conchos | 3 | 1 | 0 | 0 | 0 | 0 | 0 | n.a. ^b |
| Satevó (SAT) | Conchos | 3 | 2 | 1 | 0.667 ± 0.314 | 1.000 | 0.0006 ± 0.0003 | 0.667 | n.a. ^b |
| La Tauna (TAU) | Yaqui | 10 | 3 | 3 | 0.644 ± 0.101 | 1.050 | 0.0008 ± 0.0003 | 0.933 | -0.431 |
| Terapa (TER) | Yaqui | 11 | 4 | 7 | 0.673 ± 0.123 | 1.145 | 0.0018 ± 0.0007 | 1.964 | -0.7238 |
| Tomochic (TOM) | Yaqui | 8 | 5 | 4 | 0.786 ± 0.151 | 1.429 | 0.0009 ± 0.0002 | 1 | -1.5347 ^a |
| Urique (URI) | Fuerte | 12 | 1 | 0 | 0 | 0 | 0 | 0 | n.a. |
| Ignacio Zaragoza (ZAR) | Casas Grandes | 10 | 4 | 6 | 0.733 ± 0.101 | 1.267 | 0.0017 ± 0.0004 | 1.867 | -0.4959 |

Standard deviations after symbol (\pm): *n*, number of individuals; *NH*, number of haplotypes; *S*, number of segregating sites; *h*, haplotype diversity; *R*, allelic richness after rarefaction; π , nucleotide diversity per site; and *k*, average number of nucleotide differences. The two largest values for each variable are highlighted in bold, whereas the two minimum ones are marked in italics.

^a 0.1 > *p* > 0.05

^b minimum number of individuals required to perform the test = 4

and Conchos basins, contained only one haplotype (Table 2). Divergent haplotypes were found in Cabullona (CAB) and Agua Prieta (PRI), both in the Yaqui River basin, as shown by the number of segregating sites (*S*) and average number of nucleotide differences (*k*) (Table 2). The possibility of admixture of lineages led us to increase the number of sequenced individuals at these two sites to 15 and 17, respectively. When genetic diversity parameters were calculated according to the phylogroups indicated by the 95% SP unconnected subnetworks (see below), phylogroups VI (Yaqui, San Bernardino and Mayo River locations) and VIII (Nazas, Aguanaval and Piaxtla River locations) were the most diverse, whereas phylogroup V (Cabullona and San Bernardino River locations) was the least diverse (Table 3).

Twenty-two of the 43 individuals for which the RAG1 nuclear gene was sequenced had between one and three heterozygotic positions. After haplotype reconstruction, 12 variants were defined by 12 variable sites along the 979 bp of the final alignment (total number of mutations = 12). No gaps were found. Overall, haplotype diversity (*h*) was 0.847 ± 0.021, nucleotide diversity (π) = 0.00228 ± 0.00014, the average number of nucleotide differences (*k*) = 2.23 and Tajima's *D* = -0.166 (not significant). One variable site was a singleton and 11 substitutions were parsimony informative. Eight substitutions corresponded to synonymous changes, with the other four implicating amino acid replacements. If heterozygous positions were coded as unknown, six haplotypes were obtained for the 44 individuals mentioned

Table 3 Genetic diversity measurements for the eight *cytb* phylogroups obtained by the 95% SP unconnected subnetworks for *Campostoma ornatum*.

| Phylogroup | <i>n</i> | <i>S</i> | <i>H</i> | <i>Hd</i> | π | <i>k</i> | <i>F_s</i> (95% C.I.) | <i>R2</i> (95% C.I.) |
|------------|----------|-----------|-----------|--------------|--------------|-------------|---------------------------------|-------------------------|
| I | 44 | 5 | 6 | 0.683 | 0.001 | 0.15 | -0.77 (-3.66, 3.88) | 0.11 (0.06, 0.23) |
| II | 10 | 3 | 3 | 0.689 | 0.001 | 1.27 | 0.95 (-1.96, 3.34) | 0.21 (0.14, 0.3) |
| III | 30 | 7 | 6 | 0.655 | 0.002 | 0.8 | 0.08 (-3.73, 4.28) | 0.14 (0.07, 0.2) |
| IV | 10 | 7 | 5 | 0.8 | 0.1 | 2.09 | -0.50 (-3.2, 3.59) | 0.14 (0.11, 0.26) |
| V | 10 | 1 | 2 | 0.56 | 0.0005 | 0.56 | <u>1.09 (-0.34, 1.09)</u> | <u>0.28 (0.18, 0.3)</u> |
| VI | 76 | 39 | 15 | 0.825 | 0.009 | 9.94 | 4.16 (-9.36, 7.18) | 0.12 (0.05, 0.16) |
| VII | 48 | 14 | 11 | 0.801 | 0.002 | 2.16 | -2.51 (-5.99, 5.48) | 0.07 (0.05, 0.18) |
| VIII | 57 | 20 | 12 | 0.838 | 0.005 | 5.75 | 1.55 (-6.76, 5.68) | 0.14 (0.05, 0.17) |

n, number of individuals; *NH*, number of haplotypes; *S*, number of segregating sites; *h*, haplotype diversity; *R*, allelic richness after rarefaction; π , nucleotide diversity per site; and *k*, average number of nucleotide differences, the two largest values for each variable are highlighted in bold, whereas the two minimum ones are marked in italics.

Results for Fu's (*F_s*) and Ramos-Onsins & Rozas' (*R2*) tests for detecting population growth are also shown. Values close to significance are displayed underlined.

above. These haplotypes were defined by six variable sites (total number of mutations = 6). Two of these sites were singletons, and the remaining four substitutions were parsimony informative. Two changes involved amino acid replacement, and four were synonymous. Overall, haplotype diversity (*h*) was 0.568 ± 0.077 (standard deviation), nucleotide diversity (π) = 0.00087 ± 0.00018 , the average number of nucleotide differences (*k*) = 0.8425 and Tajima's *D* = -1.017 (not significant).

Phylogenetic reconstruction

Phylogenetic hypotheses based on *cytb* (Figure 2) and *S7* (not shown) recovered two highly supported main clades. The first group included the Atlantic drainage of Conchos, the interior drainages of Santa Clara, Casas Grandes and the western Pacific drainages Yaqui, Fuerte, Sonora and Mayo. A second clade clustered the southern populations of *C. ornatum*: the interior drainage of Nazas and Aguanaval Rivers as well as the Piaxtla basin (Figure 2). However, the phylogenetic tree based on *RAG1* (not shown) did not reveal such a monophyletic group for this "southern" group of populations, even after several other North American cypriids were used as outgroups.

Within the northern lineage, several incongruities were present among the three loci. The nuclear loci

showed a large basal polytomy for all groups, as expected for fewer variable markers. The better resolved mitochondrial topology (Figure 2), largely congruent with all of the analyses conducted (NJ, BI and ML), showed a large polytomy forming three groups: one included populations within the Yaqui and Sonora drainages; a second group comprised populations within the Conchos, Fuerte and Santa Clara drainages; and a third group was formed by populations within Yaqui and Casas Grandes drainages. This pattern did not recover the geographic pattern of the drainages, as only the Santa Clara River drainage conformed to a monophyletic group. All of the other drainages showed mixed haplotypes (Figure 2), and the southern population showed mixed haplotypes between drainages.

Applying the 95% statistical parsimony (SP) criterion to the mitochondrial dataset results in eight unconnected subnetworks (Figure 3). Haplotypes differing by up to 14 mutations could be connected, with 95% confidence that multiple substitutions did not occur at any particular nucleotide position. Overall, subnetwork VIII (Nazas-Aguanaval-Piaxtla River basins) was the most differentiated, as revealed by the fact that it remained unconnected from the other seven subnetworks until a step limit of 50 was enforced. Overall, haplotype CUA6707, from subnetwork VIII, was the most basal, as it has the fewest number of substitutions, when compared to the root (*Campostoma oligolepis*).

Most of the subnetworks were composed of haplotypes found in more than one drainage; only Santa Clara (CLA) (subnetwork IV) and Ojo de Agua (OJO) (within the Sonora basin; subnetwork II) contained private haplotypes not shared with any other subnetwork or basin (Figure 3). Although subnetworks III and V were composed of haplotypes found in only one basin (Conchos and Yaqui), haplotypes from Conchos also appeared in subnetwork I, whereas haplotypes from Yaqui were also present in subnetworks VI and VII (Figure 3). We found that haplotypes from the Tomochic and Papigochic sites (subnetwork VI) grouped in a star-like shape, as did haplotypes from the Casas Grandes (GRA) and Ignacio Zaragoza (ZAR) populations (within subnetwork VII).

Several divergent lineages were found in two particular locations: some haplotypes from Cabullona (CAB) and Agua Prieta (PRI) (both in the Yaqui River basin) formed subnetwork V, whereas other haplotypes from CAB and PRI were connected to different river basins (Mayo from subnetwork VI, Casas Grandes from subnetwork VII). This points to a distinct evolutionary history for each of those mtDNA lineages currently sympatric within the Yaqui River basin.

As a conservative measure, we calculated the 95% SP network for the *S7* nuclear gene considering the

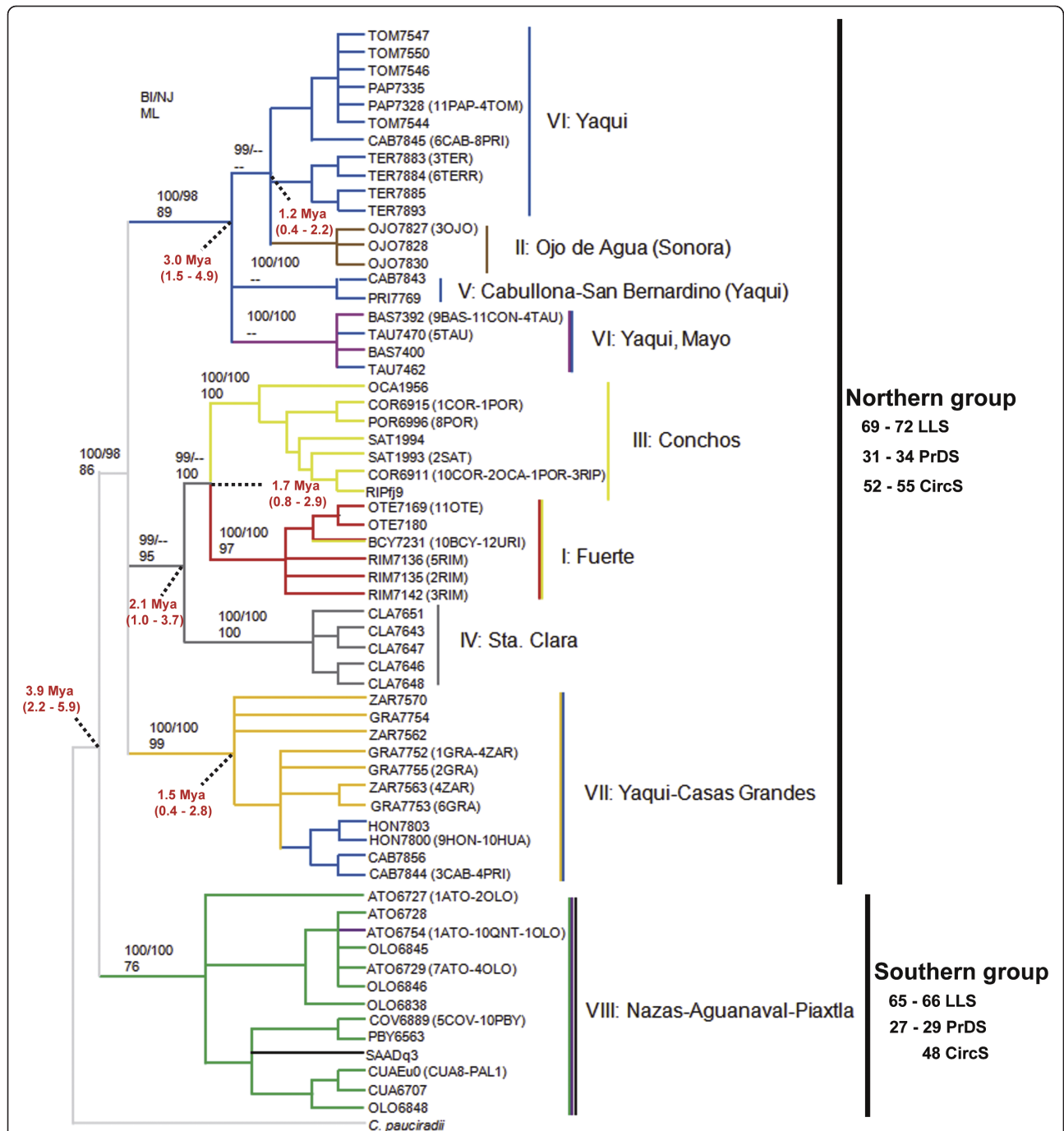
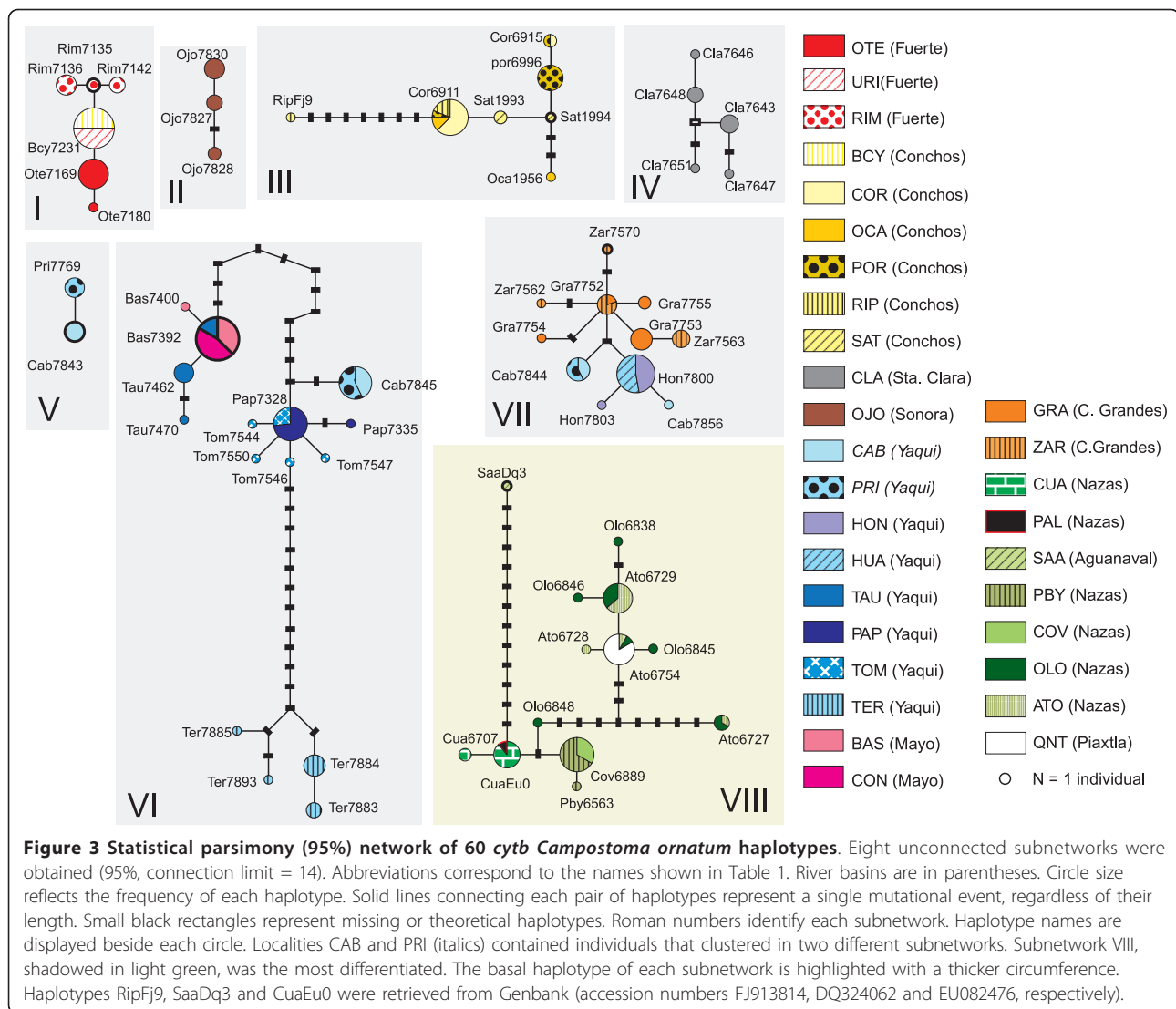


Figure 2 Phylogenetic reconstruction of *cytb* gene haplotypes. BI tree for the *Campostoma ornatum* mtDNA haplotypes sampled in this study. Posterior probabilities for the BI (top left), bootstrap support for NJ (top right) and for ML (bottom) are given for the relevant nodes. Numbers in red represent the dates (Mya) and confidence intervals obtained with BEAST. Branch colours mirror codes for sampling sites (Figure 1). Range for mode values of three informative meristic characters (LLS: lateral line scales; PrDS: predorsal scales; CircS: circumferential scales) is displayed on the right.

heterozygous sites as unknown (Figure 4a) (i.e., 15 haplotypes) and with the heterozygotes separated into the different reconstructed haplotypes (Figure 4b, sequences of inferred alleles available from the authors upon request). Differentiation of the Nazas-Aguanaval-Piaxtla

River basin (Figure 4) was clearly revealed in both cases (subnetwork 2 and 2'), as individuals from these sites formed one of the two unconnected subnetworks (connection limit = 12). Subnetworks 1 and 1' (Figure 4) were formed by four major groups of haplotypes: Santa



Clara, Sonora, Conchos-Fuerte and Yaqui-Casas Grandes-Mayo. Within this subnetwork, Santa Clara was the most differentiated haplogroup, separated by five mutational steps with respect to the BAS haplotype (Mayo basin). These results held regardless of whether gaps were considered as a fifth state.

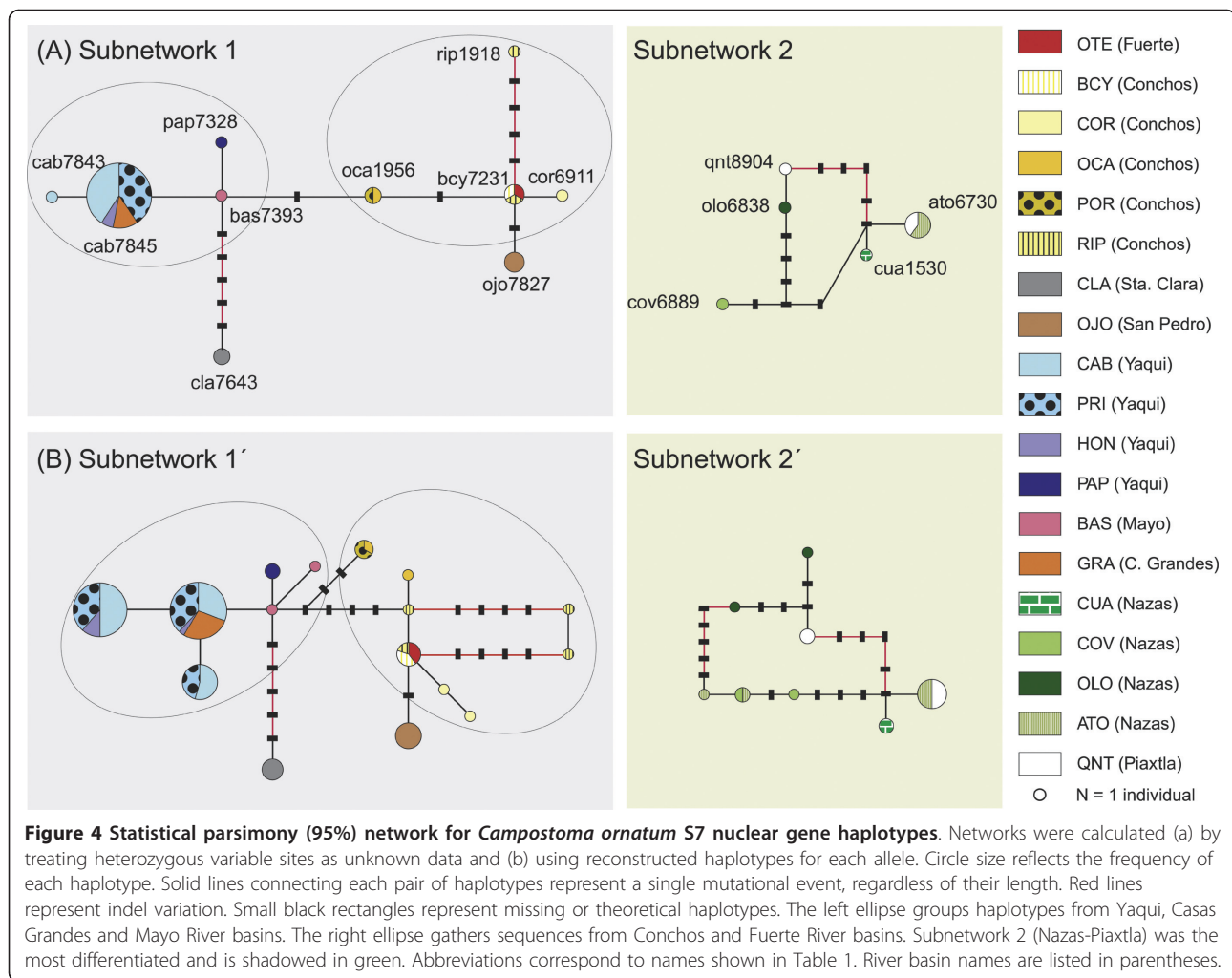
The differentiation of the Nazas-Aguanaval River basin was also clearly revealed by the 95% SP network calculated for the RAG1 marker. However, it must be noted that Santa Clara displayed a similar extent of divergence with one intermediate haplotype (Figure 5). Again, sequences of inferred alleles used to calculate Figure 5b are available from the authors upon request.

The estimated age of the most recent common ancestor (TMRCA) of the northern and southern lineages was 3.9 Mya (2.1-5.9). The diversification events within

the main northern lineage were dated back to the Lower Pleistocene (Figure 2).

Morphology

Morphological character values registered in the present study are consistent with the variation pattern obtained by prior literature [24] throughout the range of *C. ornatum*, particularly the counts in lateral line (LLS), predorsal (PrDS) and the circumferential scales (CircS). The most significant result is the distinction between the southern (mitochondrial phylogroup VIII) and northern (I-VII phylogroups) lineages, as revealed by 54-71 LLS (usually 65-66) vs 62-81 (usually 69-72), 25-32 PrDS (usually 27-29) vs 29-40 (usually 31-34) and 44-55 CircS (usually 48) vs 50-61 (usually 52-55) (Figure 1 and Additional file 1). Despite the high inter-



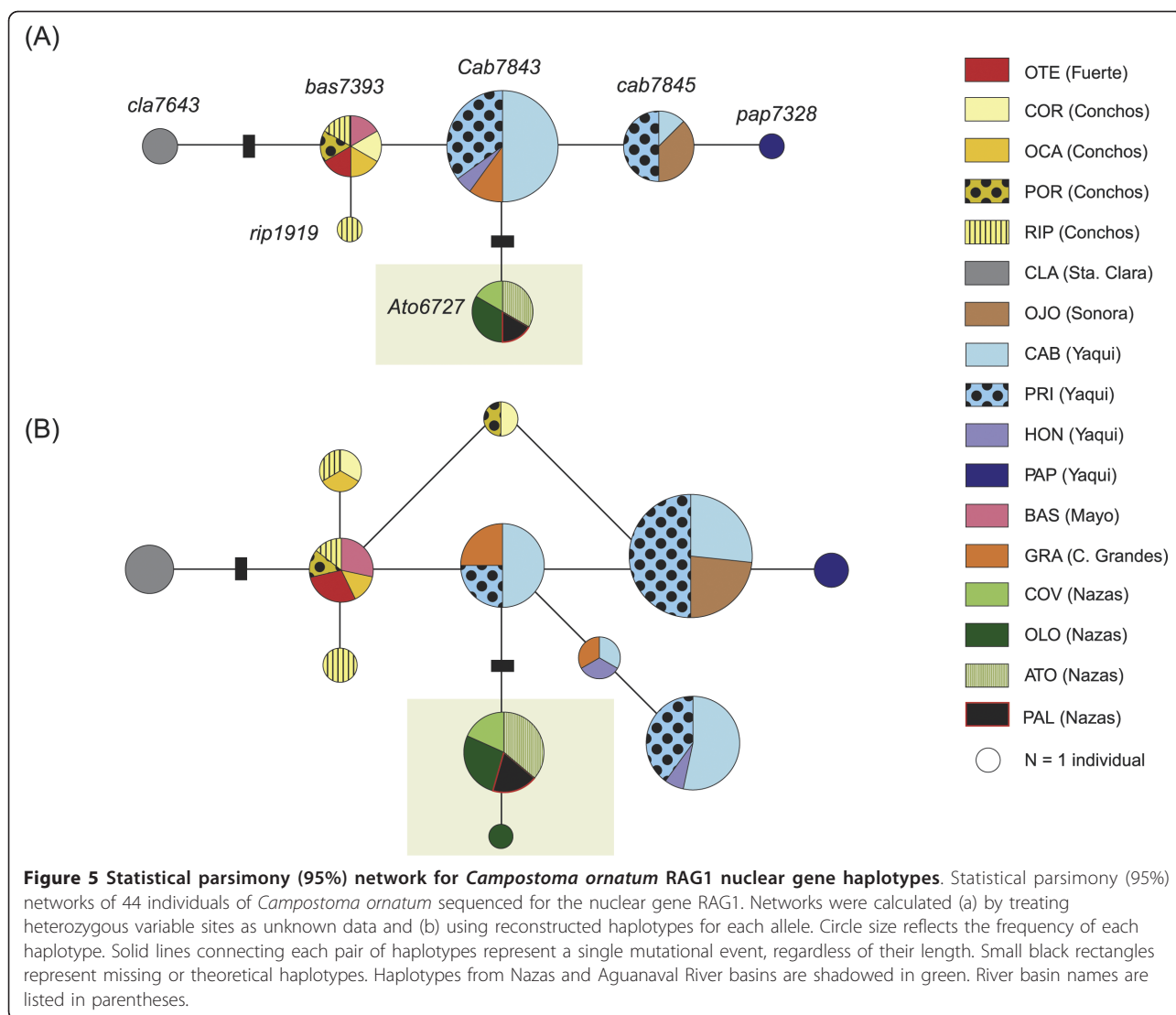
drainage and inter-population variation recorded, this morphological pattern supports the deep genetic divergence between the Nazas-Aguanaval-Piactla basins and the northern drainages (Figures 2, 3, 4, and 5). In contrast, morphological variation within northern group was not congruent with the genetic phylogenies inferred. For instance, specimens from Santa Clara basin (lineage IV) are clearly differentiated from the other northern drainages, regardless of the surveyed genetic marker (Figures 2, 3, 4, and 5). However, their morphological variation appeared overlapped with regard to other lineages within the northern group, e.g., the three surveyed variables fall within the range found for Conchos drainage (Additional file 1).

Population genetics

Most of the total variation can be explained by the divergence between sampling sites (AMOVA, $\Phi_{ST} = 0.92$, $p < 0.001$ under the Tamura-Nei model; $\Phi_{ST} = 0.58$, $p < 0.001$ if only haplotype frequencies are considered) (Table 4).

Φ_{ST} -values were all significant when pairwise comparisons between each phylogroup and between each river basin were tested (Additional files 2 and 3). Additionally, there was a high degree of distinctiveness between locations across river basins as revealed by significant pairwise Φ_{ST} -values [e.g., $\Phi_{ST} = 1$ between CON-BCY (Mayo-Conchos), CON-COV (Mayo-Nazas), CON-HUA (Mayo-Yaqui) and BCY-HUA (Conchos-Yaqui)]. Congruently, most of the non-significant values corresponded to intra-basin comparisons [e.g., CON-BAS (Mayo), COR-OCA (Conchos), HON-HUA (Yaqui) and OLO-ATO (Nazas)], but some locations belonging in different drainages also had Φ_{ST} -values that were not significant [e.g., BCY-URI (Fuerte and Conchos, respectively) and BAS-CON (Mayo and Yaqui, respectively) (Additional file 4)]. Drainage into the Atlantic (the Conchos-Bravo River basin) or to the Pacific Ocean (the remaining river basins) explained much of the genetic variance.

Samples from the Piactla, Aguanaval and Nazas River basins clustered together and were clearly separated



from the other localities at the lowest K -value used for SAMOVA. The population groupings resulting from this analysis at different K values closely match the genealogical relationships among haplotypes (Figure 6). We selected $K = 4$ and $K = 13$ as the best groupings, as revealed by the patterns obtained. The clearest rise in Φ_{CT} values was observed for $K = 4$, which mostly coincided with major lineages obtained in the phylogenetic trees [(Piactla+Nazas) (Conchos+Santa Clara+Fuerte) (Yaqui1(Cab, Pap, Pri, Tau, Ter, Tom)+Mayo+Sonora) (Casas Grandes + Yaqui2(Hon, Hua))]. The Φ_{ST} -values for the $K = 4$ arrangement were all significant, with the highest value resulting from the comparison of Nazas-Aguanaval-Piactla with Yaqui2-Casas Grandes (Additional file 5), whereas the largest decrease in Φ_{SC} was observed when $K = 13$. F_{CT} values reached the plateau after $K = 13$ (Figure 6). This partition of the data

revealed different lineages within the Yaqui, Conchos and Nazas River basins, i.e., [(Casas Grandes+Yaqui2 (Hon, Hua))] [Nazas1(Cov, Pby)] [Mayo+Yaqui1(Tau)] [Nazas2(Ato, Olo)] [Piactla] [Conchos1(Por, Sat)] [Conchos2(Cor, Oca, Rip)] [Santa Clara] [Nazas3(Cua)] [Yaqui3(Pap, Ter, Tom)] [Yaqui4(Cab, Pri)] [Conchos3 (Bcy) +Fuerte] [Sonora]. The Φ_{ST} -values for the $K = 13$ arrangement were all significant for the comparisons involving Nazas 1 (the Cov and Pby populations) and all other populations, including the Piactla River samples (Additional file 6).

Therefore, we analysed the demographic history of mtDNA lineages (i.e., phylogroups in 95% SP unconnected subnetworks), rather than sampling sites or SAMOVA groupings. This way, we could infer which lineages had experienced expansions, instead of trying to infer demographic expansions in the contemporary

Table 4 Analysis of molecular variance (AMOVA) across a range of putative population groupings.

| Grouping criterion | Population grouping | Variation accounted for (Φ) | | |
|--------------------------------------|---|------------------------------------|---|------------------------------------|
| | | Among groups (Φ_{CT}) | Among populations within groups (Φ_{SC}) | Within populations (Φ_{ST}) |
| Sampling locality | All in one group | - | <i>0.919***</i> | - |
| Phylogenetic groups (SP subnetworks) | [I] [II] [III] [IV] [V] [VI] [VII] [VIII] | - | <i>0.891***</i> | - |
| River basin | [Nazas] [Piactla] [Conchos] [Fuerte] [Mayo] [Yaqui] [Sonora] [Casas Grandes] [Santa Clara] | 0.704*** | 0.754*** | 0.927*** |
| SAMOVA $K = 4$ | [(Piactla+Nazas] [Conchos+Santa Clara+Fuerte] [Yaqui1(Cab, Pap, Pri, Tau, Ter, Tom)+Mayo+Sonora] [Casas Grandes + Yaqui2(Hon, Hua)] | 0.692*** | 0.776*** | 0.931*** |
| SAMOVA $K = 13$ | [(Casas Grandes+Yaqui2(Hon, Hua)] [Nazas1(Cov, Pby)] [Mayo+Yaqui1(Tau)] [Nazas2(Ato, Olo)] [Piactla] [Conchos1(Por, Sat)] [Conchos2(Cor, Oca, Rip)] [Santa Clara] [Nazas3(Cua)] [Yaqui3(Pap, Ter, Tom)] [Yaqui4(Cab, Pri)] [Conchos3(Bcy) +Fuerte] [Sonora] | 0.876*** | 0.367*** | 0.921*** |
| Atlantic/Pacific | [Conchos][all other localities] | 0.224*** | 0.913*** | 0.932*** |

*** $p < 0.001$. Value in italics corresponds to Φ_{ST} .

populations containing haplotypes of mixed ancestry. Neutrality tests applied to each phylogroup revealed no deviations from neutrality due to population expansion. The only lineage with F_s and R_2 statistics close to significance was the one composed of subnetwork V (containing some of the individuals from CAB and PRI, Yaqui River basin) (Table 3). The mismatch distribution analysis for this phylogroup was consistent with the sudden expansion model (SDD = 0.04, $p = 0.16$; raggedness index = 0.32, $p = 0.12$; $\tau = 0.869$, 95% CI = 0-1.818) and

showed a unimodal distribution that closely fit the expected distribution (data not shown).

Discussion

Our genetic and morphological results unambiguously showed two well-differentiated evolutionary groups within *C. ornatum*, supporting prior preliminary investigations [24]. The first lineage is located in the northern river drainages (Yaqui, Mayo, Fuerte, Sonora, Casas Grandes, Santa Clara and Conchos), whereas the other

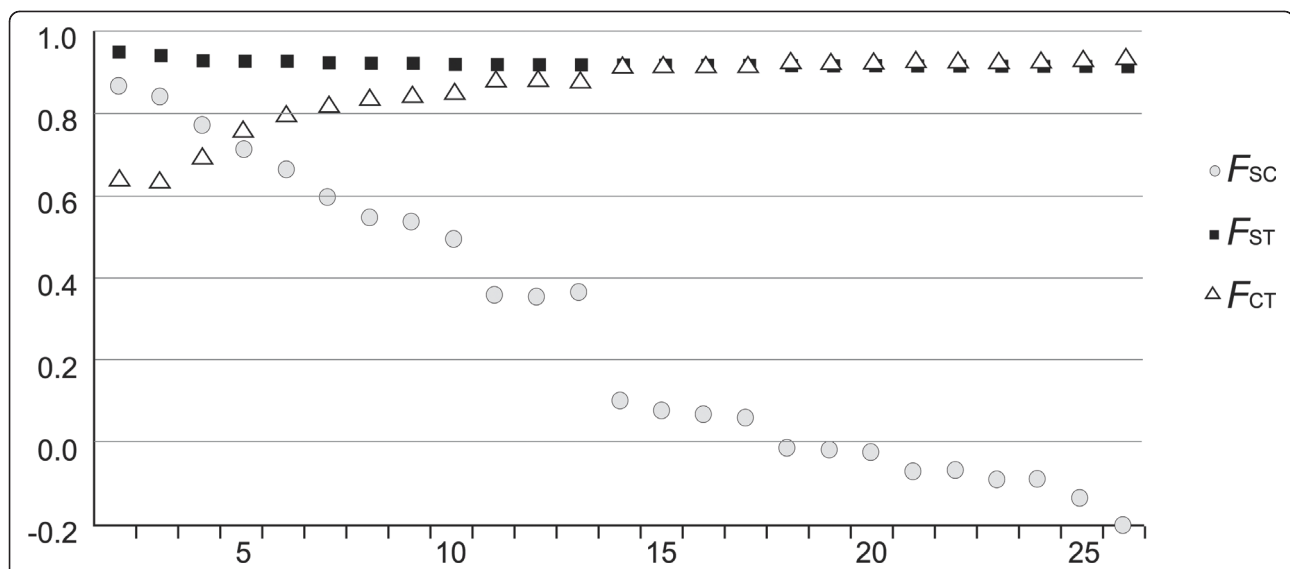


Figure 6 Spatial analysis of molecular variance (SAMOVA). Results of the spatial analysis of molecular variance showing the genetic affinity between Mexican samples of *Campostoma ornatum*. The most likely subdivisions of the whole distribution area were (i) four groups, when the increment of F_{CT} was the largest ($\Delta F_{CT} = 0.06$) and (ii) 13 groups, when the decrease of F_{CT} was maximum ($\Delta F_{CT} = -0.26$).

lineage occurs in the southernmost drainages of the species' area of distribution (Nazas, Aguanaval and Piaxtla; central SMOG). The large number of mutation steps between the two lineages exceeded the 95% parsimony limits for the *cytb* and *S7* genes, a result indicative of a long history of isolation between these clades. Such an allopatric fragmentation dated back to the Pliocene (3.9 Mya, CI = 2.1-5.9), as revealed by the Bayesian coalescent analyses. The absence of a sharp differentiation between the western (Pacific drainages) and eastern (Atlantic or endorheic basins) lineages, together with the lack of an altitudinal gradient of haplotype diversity (data not shown) lead us to discard a recent (Upper Quaternary) origin for the observed phylogeographic pattern.

In the light of this, and following the proposal of distinguishing between competing models of diversification for North and Mesoamerica [43], we can emphasise tecto-volcanic processes as the crucial factors influencing the evolutionary history of *C. ornatum*, rather than recent habitat fluctuations caused, for instance, by alternating glacial/interglacial stages. The genetic pattern we observed allowed us to infer common river piracy phenomena.

Southern group

The most plausible biogeographic scenario for the separation of northern and southern groups (mean divergences $P = 5.2\%$) is an early Pliocene vicariant event that split a widespread common ancestor. According to our dating, the allopatric fragmentation between the northern and southern lineages took place around 3.9 Mya (CI = 2.2-5.9). This scenario is also supported by the high genetic diversity found in phylogroup V (Naza-Aguanaval-Piaxtla) (Table 3), which is congruent with a high number of female founders followed by long term population stability. Observations from the southern lineage specimens examined in the present study (Nazas and Piaxtla) are in agreement with prior findings [24], as they showed a differentiated morphotype distinguished by higher counts in the lateral, predorsal and circumferential scales, as well as a deeper body. Such a genetic and morphologic differentiation warrants a taxonomic revision likely involving the description of a different taxonomic entity (Figure 2).

The existence of an ancient paleosystem related to the Nazas River has been put forward in prior literature in light of the distribution of its ichthyofauna and herpetofauna [44-46]. Numerous fish species are endemic to the Nazas River [33], which may be indicative of an independent evolutionary history of those species in isolation. Recent molecular surveys also support the existence of an ancient isolation of the Conchos River system and the Nazas, Aguanaval, Mezquital Rivers, a vicariant

event that has been dated to *ca.* 5 Mya based on the divergence between the two groups of the genus *Cyprinodon* (Actinopterygii, Ciprinodontiformes) [47]. The ancient connection and disruption of the Nazas palaeosystem with the Conchos River is well supported by the distribution of conspecific species in the *Gila*, *Cyprinella*, *Ictiobus* and *Cyprinodon* genera [23,48-50]. Thus, to the best of our knowledge, the presence of *C. ornatum* in the Aguanaval and Piaxtla Rivers is caused by a recent dispersal event from Nazas River, as revealed by the phylogenetic trees, the *cytb* network and Φ_{ST} results. This hypothesis is also in agreement with the biogeographic scenario postulated for semi-aquatic snakes of the genus *Thamnophis* [46].

Northern lineage genetic structure and demography

A complex, reticulate biogeographic history in time and space emerged within the northern *C. ornatum* populations, following a clear pattern of taxon pulse episodes [51]. This model assumes that species and their adaptations arise in "centres of diversification" and that distributional ranges of taxa periodically fluctuate around a more stable, continuously occupied centre. This general biotic dispersal may be interrupted by the formation of barriers, producing episodes of vicariant speciation. Breakdown of those barriers produces new episodes of biotic expansion, setting the stage for yet more episodes of vicariance [52]. At this point, it is worth noting the dispersal ability of our model species. We assumed the Mexican stoneroller to be a sedentary species. Its limited active dispersal may putatively be enhanced by environmental factors, such as predation or abiotic change, as has been described for other congeneric species [53,54].

Fuerte and Conchos

Although the Fuerte and Conchos River populations form a well-differentiated group ($P = 2.3\% \pm 0.4\%$ between Conchos and Fuerte Rivers populations, excluding the BCY and URI populations), pointing to a long evolutionary history in isolation (*ca.* 1.7 Mya, CI = 0.8-2.9, Figure 2), a recent dispersal event from the Fuerte to Conchos River systems is evident. We base this argument on four lines of evidence: (i) the Urique population (URI, Fuerte basin) shares a haplotype with the Bocoyna population (BCY, Conchos River) (Figure 3), (ii) both locations have non-significant Φ_{ST} values, (iii) the position of the URI population in the phylogenetic tree (Figure 2) and (iv) the concordance of the pattern in mitochondrial subnetwork I with the hypothesis of recent (post-glacial) divergence [55]. The close proximity between the headwaters of Conchos and Fuerte River basins makes highly likely the occurrence of a stream capture event between them, as suggested by [24]. Other species co-distributed between these basins,

such as *Codoma ornata*, *Gila pulchra* and *Catostomus plebeius* [23], may have experienced the same dispersal event.

Guzman endorheic basin

All markers revealed that the Santa Clara population is the most divergent (mean divergence $p = 2.9\%$). This result disagrees with the existence of the hypothesised ancient pluvial Lake Palomas [56,57], which would have covered much of the Guzman Basin systems and would have become fragmented into a series of isolated, endorheic rivers, lakes and springs during the Upper Quaternary (ca. 200 000 years ago). This event would have formed the current Guzman basin, which include the Mimbres, Casas Grandes, Santa Maria and Santa Clara River endorheic basins [58]. Our molecular dating showed more ancient episodes of isolation for both the Santa Clara (ca. 2.1 Mya (CI = 1-3.7)) and the Casas Grandes (isolated about 1.5 Mya (CI = 0.4-2.8)) populations (Figure 2). Moreover, the latter was more closely related to samples from the Bavispe River sub-basin (Yaqui River Drainage) than to samples from Santa Clara.

The close relationship between the fish fauna from the Yaqui tributaries and the Casas Grandes system can be attributed to an episode of dispersal from the Casas Grandes to the Yaqui River. This hypothesis is supported by the position of the Yaqui River samples (HON, CAV, HUA and PRI) in the phylogenetic tree (Figure 2) and network (Figure 3), as well as by their low genetic diversity. Such a connection/dispersal event between Yaqui and Casas Grandes is also supported by (i) the occurrence of other co-distributed species (such as *Cyprinella formosa* [58]) and (ii) the finding of very closely related species in each of those river basins (e.g., *Cyprinodon pisteri* and *Cyprinodon albivelis*, formerly considered the same species [59,60], occur at Casas Grandes and Yaqui, respectively [61]).

Yaqui basin

Thus far, the Yaqui River supports the most diverse *C. ornatum* populations. Haplotypes found in this northern basin are found in three different mitochondrial subnetworks (including subnetwork VII, as previously explained) (Figure 3) and their supported clades (Figure 2), which was confirmed by the nuclear dataset. Subnetworks V and VI are mainly composed by haplotypes occurring at the Yaqui tributaries and diverged from the other clades around 3 Mya (CI = 1.5-4.9) (Figure 2). This indicates an initial and ancient vicariant event between the Yaqui River and its contiguous basins (Mayo, Sonora and Casas Grandes), followed by episodes of dispersal and subsequent isolation.

Concerning descriptors of genetic diversity, the mitochondrial subnetwork VI had the greatest number of haplotypes, segregating sites, haplotype diversity and

average number of differences (Table 3). In light of this, we suggest a dispersal event from the Yaqui to the Mayo River, an event supported by the position of the Mayo populations (BAS and CON) in the phylogenetic tree. Moreover, the La Tauna population (TAU, within Yaqui River) shares a haplotype with the Concheño (CON) and Basaseachic (BAS) populations, both from the Mayo River, and also shows a non-significant pairwise Φ_{ST} value, which may be indicative of recent gene flow. Faunal exchanges between the Yaqui River and surrounding areas have been previously reported [15,62]. In fact, it has been argued that dispersal between the Yaqui and its contiguous basins was, putatively, a reason for the high fish biodiversity in the Yaqui River [23].

The Yaqui River system hosts three divergent haplogroups (subnetworks V, VI and VII) that occur in sympatry at the Cabullona and Agua Prieta locations (both belonging to Agua Prieta stream, an upper tributary of the Bavispe sub-basin). One of those haplogroups clusters with haplotypes found in the Casas Grandes River forming subnetwork VII. Haplotype cab7845 falls within the second haplogroup (subnetwork VI), closely related with haplotypes from the Tomochic and Papi-goichic sites (Yaqui River). The third lineage (subnetwork V) is composed by only two haplotypes and shows a mean genetic divergence of $P = 1.5\%$, also suggesting a relatively long isolation. Interestingly, the Terapia population (TER), also belonging to the Yaqui River basin, shows a high amount of divergence with respect to other Yaqui populations ($P = 1.3\%$). These results are, again, congruent with episodes of isolation in different tributaries of the Yaqui River, followed by a secondary dispersal from some isolated demes to other Yaqui tributaries. We postulate this hypothesis as the most likely explanation for the presence of those three divergent mitochondrial lineages at Cabullona and Agua Prieta.

Sonora basin

Haplotypes from the Ojo de Agua (OJO) site, a small spring located at the Sonora River Basin, belong to a separated subnetwork (II) and show large genetic distances ($P = 2.1\% \pm 0.3\%$) with other members of its monophyletic group (Figure 2). This may be indicative of relatively long period of isolation, starting around 1.2 Mya (CI = 0.4-2.2). In addition, the low values of genetic diversity reported for these samples could be caused by a reduction in effective population size, as is expected due to the small size of the sampled area.

Implications for conservation and taxonomy

In the light of our genetic and morphologic results, we hereby define three ESUs (*sensu* [42]) within *C. ornatum* corresponding to the following groups: (i) the southern lineage, (ii) the northern lineage and (iii) the Yaqui river

basin. While acknowledging that the Yaqui belongs to the northern lineage, we define this third sub-hierarchical ESU due to the existence of three deeply divergent lineages at Agua Prieta. Here, the term sub-hierarchical does not infer subordination but rather a frame of reference on a phylogenetic continuum [42]. At present, only two of the sampled localities are currently protected by Mexican legislation (Urique and Huachinera), although the BAS sampling site is close to the Basaseachic Falls National Park. Therefore, the definition of these three ESUs shall promote the conservation of the evolutionary processes shaping the genetic pattern of *C. ornatum* throughout its range.

Conclusion

We found populations of *C. ornatum* with a complex, reticulate biogeographic history with repeated events of isolation and dispersal, which is consistent with the taxon pulse theory. This complex history could be related to the dynamic tecto-volcanic activity that has occurred in the region since the early Pliocene. Both genetics and morphology revealed a strong differentiation between the southern and northern populations of *C. ornatum*. In light of this, a taxonomic revision is necessary to clarify the taxonomic status of the two well-differentiated groups within *Campostoma ornatum*. The differentiation between the northern and southern taxa was likely due to the isolation of the paleosystem that connected the Nazas with other northern river basins during the Pliocene. In addition, we determined the presence of three very divergent mitochondrial lineages occurring concurrently in the northern Agua Prieta Stream (Yaqui river basin). We postulated that episodes of isolation and the subsequent admixture of lineages from different sources could explain the co-occurrence of these lineages at Yaqui. In addition, three ESUs are proposed that cover the full range of the Mexican stoneroller. The pattern obtained for *Campostoma ornatum* paves the way for a future comparative phylogeographical study aimed at disentangling the evolutionary factors that shape the genetic structure of this species and its populations in the northwest of Mexico.

Methods

Specimen collection and laboratory procedures

A total of 285 *Camposoma ornatum* individuals were collected at 29 locations in northwest Mexico (Figure 1). Between 3 and 17 specimens were analysed per location (Table 1). Organisms were caught using a seine net and electrofishing. A small sample of tissue from the caudal fin from each fish was cut and preserved in 96% ethanol and stored in the laboratory at -20°C prior to analysis. Voucher specimens were fixed in 10% formalin and preserved in 70% ethanol and deposited in the *Colección de*

Peces de la Universidad Michoacana (CPUM) (Table 1). To confirm the taxonomic identity of *C. ornatum*, morphological examination was performed following [24], i. e., using the three most informative meristic characters: (i) number of lateral line scales, (ii) number of predorsal scales and (iii) number of circumferential scales. We analysed ten specimens corresponding to, at least, one population from each major drainage, except for Aguanaval and Mayo (Additional file 1).

Genomic DNA was extracted from a <0.25 cm² piece of the pectoral fin using the High Pure™ PCR Template Preparation Kit (Roche Diagnostics GmbH, Mannheim, Germany), following the manufacturer's instructions. We amplified a 1140-bp fragment of the mitochondrial cytochrome b gene (*cytb*) in 285 individuals by Polymerase Chain Reaction (PCR) and the GLUf - THRr primer pair [63].

Amplifications were performed in 30-μL reaction volumes containing 1× PCR buffer (5PRIME), 1 U *Taq* DNA polymerase (5PRIME), 0.2 mM of each dNTP, 0.2 μM of each primer and 50-100 ng of DNA. Similar conditions were employed to amplify the first intron of the S7 ribosomal protein gene in 56 specimens (1000 bp, primers S7RPEX1F and S7RPEX2R [64]) and approximately 1400 bp of the recombinant activation gene 1 (RAG1) in 43 samples (primers RAG1F1 and RAG1R1 [65]).

PCR for *cytb* started with an initial denaturing step at 95°C for 2 minutes, followed by 35 amplification cycles at 94°C for 1 minute, 56°C for 1.5 minutes, 65°C for 1 minute and a final extension step at 65°C for 7 minutes. PCR for S7 started with an initial denaturing step at 95°C for 2 minutes, followed by 30 amplification cycles at 95°C for 1 minute, 59.5°C for 1.5 minutes, 65°C for 2 minutes and a final extension step at 65°C for 7 minutes. PCR for RAG1 started with an initial denaturing step at 94°C for 2 minutes, followed by 40 amplification cycles at 94°C for 45 seconds, 56-58°C for 1 minute, 68°C for 2 minutes and a final extension step at 68°C for 7 minutes.

PCR products were electrophoresed on 2% agarose gels and visualised under UV light after ethidium bromide staining. *Cytb* PCR products were purified and bidirectionally sequenced at the DNA Sequencing Service (Macrogen, Seoul, Korea). S7 and RAG1 PCR products were purified and bidirectionally sequenced on a 3130 × 1 Genetic Analyser (Applied Biosystems, ABI) at SAI (Sequencing Facility, University of A Coruña, Spain). New sequences were deposited in GenBank (Table 1).

Alignment and diversity analyses

DNA electropherograms were checked and aligned using CODONCODES 3.5.6 (CodonCode Corporation,

Dedham, Massachusetts). Mitochondrial alignments were straightforward. Apart from the 285 individuals sequenced for the present work, phylogenetic analyses included three *Campostoma ornatum cytb* sequences available in public databases for (accession numbers EU082476, DQ324062 and FJ913814). For phylogenetic analyses, RAG1 alignments included sequence EU082549 from Durango (Nazas River basin). Mitochondrial alignments were straightforward and unambiguous. For the analysis of nuclear DNA, the sites where individuals contained heterozygous genotypes for the sampled nuclear loci and any heterozygous base pair positions were coded using standard degeneracy codes [66]. Heterozygous sites in S7 and RAG1 sequences were resolved to two haplotypes per individual using the PHASE feature of DNAsp v.5.1 [67], which uses the algorithms from PHASE 2.1.1 [68]. We employed the recombination model (MR0), setting the output probability for both genotypes and haplotypes to 0.95. Following [69], runs consisted of 500 iterations as burn-in, 500 main iterations and a thinning interval = 1.

Haplotypes and their frequencies, standard indices of genetic variation such as the number of segregating sites (S), nucleotide diversity per gene (π), haplotype diversity (h) and the average number of nucleotide differences (k) were calculated using DNAsp 5.1 [67]. Allelic richness (R) was computed after rarefaction to three individuals [70] using CONTRIB (available at <http://www.pierroton.inra.fr/genetics/labo/Software/>) for all populations that included at least three individuals.

Phylogenetic analyses

As DNA variation may arise through different molecular evolution models, we ran jMODELTEST 0.1.1 [71] to select the one that best matched our three datasets following Akaike's criterion: for the *cytb* gene, we obtained the General Time Reversible model with a gamma distribution shaped with $\alpha = 0.175$, F81 for S7 and K80+I for RAG1. These models were used to estimate the phylogenetic relationships between all populations of *C. ornatum* based on the mitochondrial *cytb* gene and the S7 and RAG1 nuclear genes. Phylogenetic trees were calculated using the neighbour-joining (NJ), Bayesian inference (BI) and maximum likelihood (ML) methods. Distance analysis was carried out as implemented in PAUP *4.0b10 [72] for 1000 bootstrap replicates. BI was performed in MrBayes [73], and two independent analyses of four MCMC were run with 9,000,000 and 5,000,000 generations for mitochondrial and nuclear loci, respectively, sampling every 100 generations. Once the convergence and stationarity were verified by a suitable effective sample size (ESS) for all parameters in Tracer v.1.4.1 [74], "burn in" consisting in removing the first 10% of generations was

performed and posterior probabilities were obtained from a majority-rule consensus. The Maximum Likelihood (ML) phylogeny was inferred using PhyML 3.0 [75] using the subtree pruning and regrafting (SPR) tree searching option. Branch support was assessed after 1000 bootstrap replicates as well as with the Shimodaira-Hasegawa-like (SH) procedure implemented in PhyML. We used *Campostoma oligolepis* (accession number DQ324064) as an outgroup to root the tree. Using sequences from *Campostoma pullum* (EU082477) or *Campostoma pauciradii* (DQ324065) as outgroup did not significantly change any of the results shown in the present study.

The phylogeny of the haplotypes was also inferred using the statistical parsimony (SP) criterion [76]. The 95% SP network was calculated using TCS 1.2 [77]. As several unconnected networks were obtained, we then forced the TCS algorithm to connect all subnetworks with a fixed connection limit of 50 steps. To have a reference to calibrate the extent of divergence between haplogroups, we rooted the resulting network with a homologous sequence from *Campostoma pauciradii* (DQ324065) by forcing a connection limit of 130 steps. Similarly, 95% SP networks were calculated for S7 and RAG1 datasets, both using only homozygous positions (i.e., heterozygous coded as unknown) and the separated haplotypes inferred by PHASE.

Molecular Clock

We estimated divergence times among sets of mitochondrial sequences and their associated credibility intervals using the Bayesian coalescent approach as implemented in BEAST 1.4.6 [78]. Markov chain Monte Carlo (MCMC) simulations were run with the following specifications: the GTR model of evolution, uncorrelated lognormal distribution, the Yule tree process as a prior and a branch length substitution rate sampled from a prior normal distribution (mean value = 0.010, standard deviation = 0.001). All simulations were run for 50 million generations, sampling chains every 1000 generations. Because of the lack of an appropriate fossil record for the genus *Campostoma*, we applied a rate of molecular evolution of 1.05% per million years, calibrated for the *cytb* in North American Phoxinini [79] and widely applied to cyprinids [14,80]. The results of three independent runs (with an UPGMA starting tree) were loaded and combined in TRACER 1.5 [74] to check for convergence on a stationary distribution, determine burn-in and assess effective sample size (ESS) and frequency plots of the relevant parameters. Ten percent of the trees were discarded as burn-in, and the remaining ones were combined in the BEAST module LogCombiner 1.4.6. Lastly, the BEAST module TreeAnnotator 1.4.6 was used to calculate the timescale.

Population genetics

We tested for evidence of population subdivision under different criteria using an analysis of molecular variance (AMOVA) as implemented in ARLEQUIN v.3.5.1.2 [81]. We also used ARLEQUIN to test for genetic differentiation between pairs of populations using F_{ST} analogues (Φ_{ST}) based on the Tamura-Nei model of sequence evolution. Statistical significance of covariance components (and Φ -statistics) from AMOVAs and pairwise Φ_{ST} values was determined on the basis of the distribution of values obtained from 1000 permutations of the data.

We also assessed population structuring using the simulated annealing procedure as implemented in SAMOVA (Spatial Analysis of Molecular Variance) 1.0 [82]. We used 100 simulated annealing processes for k values from 2 to 29.

Demographic history

The demographic history of the *cytb* phylogroups was first explored using Fu's F_s [83] and R_2 [84] statistics. Their significance was assessed through the 95% confidence interval after 1000 coalescent simulations that were conditional on the number of segregating sites, as implemented in DNAsp.

We characterised the demographic expansions detected for all phylogroups, rejecting the null hypothesis under the F_s and R_2 tests with the mismatch distribution of the pairwise genetic differences [85], as implemented in ARLEQUIN. Goodness-of-fit to a sudden expansion model was tested using parametric bootstrap approaches (1000 replicates). The sum of squared deviations (SSD) between the observed and expected mismatch distributions was used to assess the significance of the test.

Additional material

Additional file 1: Informative meristic characters for Northern and Southern *Campostoma* groups. Morphological character values registered throughout the range of *C. ornatum*: counts in lateral line (LLS), predorsal (PrDS) and the circumferential scales (CircS).

Additional file 2: Matrix of population pairwise Φ_{ST} -values according to phylogenetic grouping. Matrix of population pairwise Φ_{ST} -values according to phylogenetic grouping and obtained under the Tamura-Nei model of sequence evolution. All values were significant after correction for multiple testing.

Additional file 3: Matrix of pairwise Φ_{ST} -values by river basin. Matrix of pairwise Φ_{ST} -values by River basin and obtained under the Tamura-Nei model of sequence evolution. All values are significant after correction for multiple testing.

Additional file 4: Matrices of pairwise Φ_{ST} -values by sampling locality. Below diagonal: Pairwise Φ_{ST} values calculated under the Tamura-Nei model. Above diagonal: same calculations using haplotype frequencies. Significance was evaluated after 10000 permutations.

Additional file 5: Matrix of population pairwise Φ_{ST} -values according to SAMOVA ($K = 4$) groupings. Matrix of population pairwise Φ_{ST} -values according to SAMOVA ($K = 4$) groupings and

obtained under the Tamura-Nei model of sequence evolution. All values were significant after correction for multiple testing.

Additional file 6: Matrix of population pairwise Φ_{ST} -values according to SAMOVA ($K = 13$). Matrix of population pairwise Φ_{ST} -values according to SAMOVA ($K = 13$) groupings and obtained under the Tamura-Nei model of sequence evolution. All values significant after correction for multiple testing.

Acknowledgements

We thank Rosa García and Lourdes Alcaraz for their valuable help in the lab. We appreciate the comments and corrections suggested by two anonymous referees and Prof. Miguel Vences. This investigation was financially supported by grants from Chester Zoo Garden, PROMEP PTC-232 for ODD and the University of A Coruña to MV. RPR is grateful to Consejo Nacional de Ciencia y Tecnología (CONACyT) for a PhD scholarship (No.195290).

Author details

¹Laboratorio de Biología Acuática, Facultad de Biología, Universidad Michoacana de San Nicolás de Hidalgo, Morelia, Michoacán, México.

²Department of Molecular and Cell Biology, Faculty of Sciences, University of A Coruña, Campus Zapateira, E-15008 A Coruña, Spain. ³Departamento de Zoología, Instituto de Biología, Universidad Nacional Autónoma de México, C.P. 04510, Apartado Postal 70-153, México, D.F., México. ⁴Departamento de Biodiversidad y Biología Evolutiva, Museo Nacional de Ciencias Naturales, CSIC, c/José Gutiérrez Abascal 2, E-28006 Madrid, Spain.

Authors' contributions

ODD conceived the study, collected the samples, performed phylogenetic analyses and drafted the manuscript. MV obtained the DNA sequences, performed the population genetic analyses, participated in the phylogenetic survey and contributed in the writing of the paper. RPR collected the samples, performed morphological and molecular dating analyses and was involved in writing the manuscript. NR carried out the molecular labwork and participated in the sequence alignment. ID conceived the study, participated in its design and coordination as well as was involved in the writing. All authors read and approved the final manuscript.

Received: 29 November 2010 Accepted: 4 June 2011

Published: 4 June 2011

References

1. Rissler LJ, Smith WH: Mapping amphibian contact zones and phylogeographical break hotspots across the United States. *Mol Ecol* 2010, **19**:5404-5416.
2. Badgley C: Tectonics, topography, and mammalian diversity. *Ecography* 2010, **33**:220-231.
3. Ledig FT, Hodgskiss PD, Jacob-Cervantes V: Genetic diversity, mating system, and conservation of a Mexican subalpine relict, *Picea mexicana* Martínez. *Conserv Genet* 2002, **3**:113-122.
4. Voelker G, Outlaw RK, Bowler RCK: Pliocene forest dynamics as a primary driver of African bird speciation. *Global Ecol Biogeogr* 2010, **19**:111-121.
5. Bryson RW, Murphy RW, Lathrop A, Lazcano-Villareal D: Evolutionary drivers of phylogeographical diversity in the highlands of Mexico: a case study of the *Crotalus triseriatus* species group of montane rattlesnakes. *J Biogeogr* 2011, **38**:697-710.
6. Zarza E, Reynoso VH, Emerson BC: Diversification in the northern neotropics: mitochondrial and nuclear DNA phylogeography of the iguana *Ctenosaura pectinata* and related species. *Mol Ecol* 2008, **17**:3259-3275.
7. Moreno-Letelier A, Piñero D: Phylogeographic structure of *Pinus strobiformis* Engelm. across the Chihuahuan Desert filter-barrier. *J Biogeogr* 2009, **36**:121-131.
8. Demastes JW, Spradling TA, Hafner MS, Hafner DJ, Reed DL: Systematics and phylogeography of pocket gophers in the genera *Cratogeomys* and *Pappogeomys*. *Mol Phylogenet Evol* 2002, **22**:144-154.
9. Coblenz DD, Riitters KH: Topographic controls on the regional-scale biodiversity of the south-western USA. *J Biogeogr* 2004, **31**:1125-1138.

10. Ceballos G, Arroyo-Cabrales J, Ponce E: **Effects of Pleistocene environmental changes on the distribution and community structure of the mammalian fauna of Mexico.** *Quaternary Res* 2010, **73**:464-473.
11. Morrone JJ: **Fundamental biogeographic patterns across the Mexican Transition Zone: an evolutionary approach.** *Ecography* 2010, **33**:355-361.
12. Ferrari L, Valencia-Moreno M, Bryan S: **Magmatismo y tectónica en la Sierra Madre Occidental y su relación con la evolución de la margen occidental de Norteamérica.** *Bol Soc Geol Mex* 2005, **LVII**:343-378.
13. Montgomery DR, Lopez-Blanco J: **Post-Oligocene river incision, southern Sierra Madre Occidental, Mexico.** *Geomorphology* 2003, **55**:235-247.
14. Pérez-Rodríguez R, Domínguez-Domínguez O, Pérez-Ponce de León G, Doadrio I: **Phylogenetic relationships and biogeography of the genus *Algansea* Girard 1856 (Cypriniformes: Cyprinidae) from central Mexico inferred from molecular data.** *BMC Evol Biol* 2009, **9**:223.
15. Camarena-Rosales F, Ruiz-Campos G, De La Rosa-Vélez J, Mayden RL, Hendrickson DA, Varela-Romero A, García de León FJ: **Mitochondrial haplotype variation in wild trout populations (Teleostei: Salmonidae) from northwestern Mexico.** *Rev Fish Biol Fisher* 2008, **18**:33-45.
16. Hedrick PW, Lee RN, Hurt CR: **The endangered Sonoran topminnow: Examination of species and ESUs using three mtDNA genes.** *Conserv Genet* 2006, **7**:483-492.
17. Goldberg CS, Sullivan BK, Malone JH, Schwalbe CR: **Divergence among barking frogs (*Eleutherodactylus augusti*) in the southwestern United States.** *Herpetologica* 2004, **60**:312-320.
18. Anducho-Reyes MA, Cognato AI, Hayes JL, Zúñiga G: **Phylogeography of the bark beetle *Dendroctonus mexicanus* Hopkins (Coleoptera: Curculionidae: Scolytinae).** *Mol Phylogenet Evol* 2008, **49**:930-940.
19. Metcalfe SE, O'Hara SL, Caballero M, Davies SJ: **Records of Late Pleistocene-Holocene climatic change in Mexico - a review.** *Quaternary Sci Rev* 2000, **19**:699-721.
20. Ortega-Rosas CI, Guiot J, Penalba MC, Ortiz-Acosta ME: **Biomization and quantitative climate reconstruction techniques in northwestern Mexico - With an application to four Holocene pollen sequences.** *Global Planet Change* 2008, **61**:242-266.
21. Mead JI, White RS, Baez A, Hollenshead MG, Swift SL, Carpenter MC: **Late Pleistocene (Rancholabrean) *Cynomys* (Rodentia, Sciuridae: prairie dog) from northwestern Sonora, Mexico.** *Quat Int* 2010, **217**:138-142.
22. Nunez EE, Macfadden BJ, Mead JI, Baez A: **Ancient forests and grasslands in the desert: Diet and habitat of Late Pleistocene mammals from Northcentral Sonora, Mexico.** *Palaeogeogr Palaeoclimatol Palaeoecol* 2010, **297**:391-400.
23. Miller RR, Minkley WL, Norris SM: *Freshwater fishes of Mexico.* 1 edition. Chicago: University of Chicago Press; 2005.
24. Burr BM: **A review of the Mexican Stoneroller, *Campostoma ornatum* Girard (Pisces: Cyprinidae).** *Trans San Diego Soc Nat Hist* 1976, **18**:127-144.
25. Mittermeier RA, Robles Gil P, Hoffmann M, Pilgrim J, Brooks T, Goettsch Mittermeier C, Lamoreux J, Da Fonseca GAB: *Hotspots Revisited: Earth's Biologically Richest and Most Endangered Terrestrial Ecoregions* Chicago: Conservation International; 2005.
26. Gleeson DM, Howitt RL, Ling N: **Genetic variation, population structure and cryptic species within the black mudfish, *Neochanna diversus*, an endemic galaxiid from New Zealand.** *Mol Ecol* 1999, **8**:47-57.
27. Colborn J, Crabtree RE, Shaklee JB, Pfeiler E, Bowen BW: **The Evolutionary Enigma of Bonefishes (*Albula* spp.): Cryptic Species and Ancient Separations in a Globally Distributed Shorefish.** *Evolution* 2001, **55**:807-820.
28. Huey JA, Baker AM, Hughes JM: **High levels of genetic structure in the Australian freshwater fish, *Ambassis macleayi*.** *J North Am Benthol Soc* 2010, **29**:1148-1160.
29. Pompa-Domínguez A, Doadrio I: **A new species of the Genus *Yuriria* Jordan & Evermann, 1896 (Actinopterygii, Cyprinidae) from the Ameca Basin in the Central Mexican Plateau.** *Graellsia* 2007, **63**:259-271.
30. Domínguez-Domínguez O, Pérez-Rodríguez R, Escalera-Vázquez LH, Doadrio I: **Two new species of the genus *Notropis* Rafinesque, 1817 (Actinopterygii, Cyprinidae) from the Lerma River Basin in Central Mexico.** *Hidrobiológica* 2009, **19**:159-172.
31. Blum MJ, Neely DA, Harris PM, Mayden RL: **Molecular Systematics of the Cyprinid Genus *Campostoma* (Actinopterygii: Cypriniformes): Disassociation between Morphological and Mitochondrial Differentiation.** *Copeia* 2008, **2008**:360-369.
32. Cashner RC, Matthews WJ, Marsh-Matthews E, Unmack PJ, Cashner FM: **Recognition and Redescription of a Distinctive Stoneroller from the Southern Interior Highlands.** *Copeia* 2010, **2010**:300-311.
33. Contreras-Balderas S, Lozano-Vilano MD, García-Ramírez ME: **Historical changes in the index of biological integrity for the lower Rio Nazas, Durango, Mexico.** In *Historical changes in large river fish assemblages of the Americas. Volume 45.* Edited by: Rinne JN, Hughes RM, Calamusso B. Bethesda, Maryland: American Fisheries Society Symposium; 2005:225-237.
34. Domínguez-Domínguez O, Pérez-Ponce de León G: **Is the Mesa Central of Mexico a biogeographical province? Descriptive analysis based on freshwater biotic components.** *Rev Mex Biodivers* 2009, **85**:835-852.
35. Hendrickson DA, Minkley WL, Miller RR, Siebert DJ, Minkley PH: **Fishes of the Río Yaqui basin, México and United States.** *J Arizona-Nevada Acad Sci* 1980, **15**:65-106.
36. Arizona Game and Fish Department: *Campostoma ornatum.* Distributed by the Heritage Data Management System, Arizona Game and Fish Department. Phoenix, AZ 2003 [http://www.gf.state.az.us/pdfs/w_c/hdms/Fish/Camporna.fo.pdf].
37. Allendorf FW, Luikart G: **Units of Conservation.** *Conservation and the Genetics of Populations* Oxford: Blackwell Publishing; 2007, 380-420.
38. Lyons J, Navarro-Pérez S, Cochran PA, Santanta CE, Guzmán-Arroyo M: **Index of Biotic Integrity Based on Fish Assemblages for the Conservation of Streams and Rivers in West-Central Mexico.** *Conserv Biol* 1995, **9**:569-584.
39. Alcocer J, Bernal-Brooks FW: **Limnology in Mexico.** *Hydrobiologia* 2010, **644**:15-68.
40. Edwards RJ, Garrett GP, Marsh-Matthews E: **Conservation and status of the fish communities inhabiting the Rio Conchos basin and middle Rio Grande, Mexico and U.S.A.** *Rev Fish Biol Fisher* 2002, **12**:119-132.
41. Contreras-Balderas S, Almada-Villela P, Lozano-Vilano ML, García-Ramírez ME: **Freshwater fish at risk or extinct in Mexico A checklist and review.** *Rev Fish Biol Fisher* 2003, **12**:241-251.
42. Fraser DJ, Bernatchez L: **Adaptive evolutionary conservation: towards a unified concept for defining conservation units.** *Mol Ecol* 2001, **10**:2741-2752.
43. McCormack JE, Peterson AT, Bonaccorso E, Smith TB: **Speciation in the highlands of Mexico: genetic and phenotypic divergence in the Mexican jay (*Aphelocoma ultramarina*).** *Mol Ecol* 2008, **17**:2505-2521.
44. Meek SE: **The freshwater fishes of Mexico north of the isthmus of Tehuantepec.** *Field Columbian Mus Publ Zool Ser* 1904, **5**:1-252.
45. Arellano RV: **Research on the continental Neogene of Mexico.** *Am J Sci* 1951, **249**:604-616.
46. Conant R: **Semiaquatic snakes of the genus *Thamnophis* from the isolated drainage system of the Rio Nazas and adjacent areas in Mexico.** *Copeia* 1963, **1963**:473-499.
47. Echelle AA, Carson EW, Echelle AF, Bussche RAVD, Dowling TE, Meyer A: **Historical Biogeography of the New-World Pupfish Genus *Cyprinodon* (Teleostei: Cyprinodontidae).** *Copeia* 2005, **2005**:220-239.
48. Contreras-Balderas S, Lozano ML: ***Cyprinella alvarezdelvillari*, a New Cyprinid Fish from Río Nazas of México, with a Key to the *Lepida* Clade.** *Copeia* 1994, **1994**:897-906.
49. Echelle AA, Echelle AF: **Evolutionary relationships of pupfishes in the *Cyprinodon eximius* complex (Atherinomorpha: Cyprinodontiformes).** *Copeia* 1998, **1998**:852-865.
50. Bart HL, Clementsb MD, Blantonb RE, Pillerb KR, Hurleyc DL: **Discordant molecular and morphological evolution in buffalofishes (Actinopterygii: Catostomidae).** *Mol Phylogenet Evol* 2010, **56**:808-820.
51. Erwin TL: **Taxon pulses, vicariance, and dispersal: an evolutionary synthesis illustrated by carabid beetles.** In *Vicariance Biogeography - a Critique.* Edited by: Nelson G, Rosen DE. New York Columbia University Press; 1981:159-196.
52. Brooks DR: **Historical biogeography in the age of complexity: Expansion and integration.** *Rev Mex Biodivers* 2005, **76**:79-94.
53. Mundahl ND, Ingersoll CG: **Home range, movements, and density of the central stoneroller, *Campostoma anomalum*, in a small Ohio stream.** *Environ Biol Fish* 1989, **24**:307-311.
54. Schaefer J: **Riffles as barriers to interpool movement by three cyprinids (*Notropis boops*, *Campostoma anomalum* and *Cyprinella venusta*).** *Freshwater Biol* 2001, **46**:379-388.

55. McCormack JE, Bowen BS, Smith TB: Integrating paleoecology and genetics of bird populations in two sky island archipelagos. *BMC Biol* 2008, **6**:28.
56. Reeves CC: Pluvial Lake Palomas, Northwestern Chihuahua, Mexico. In *Guidebook of the border region*. Edited by: Córdoba DA, Wengard SA, Shomaker J. New Mexico Geological Society, 20th Annual Field Conference Guidebook; 1969:143-154.
57. Chernoff B, Miller RR: *Notropis bocagrande*, a new cyprinid fish from Chihuahua, Mexico, with comments on *Notropis formosus*. *Copeia* 1982, **1982**:514-522.
58. Wood RM, Mayden RL: Speciation and anagenesis in the genus *Cyprinella* of Mexico (Teleostei: Cyprinidae): a case study of Model III allopatric speciation. *Rev Fish Biol Fisher* 2002, **12**:253-271.
59. Echelle AA, Dowling TE: Mitochondrial DNA variation and evolution of the Death Valley pupfishes (*Cyprinodon*, Cyprinodontidae). *Evolution* 1992, **46**:193-206.
60. Echelle AA, Echelle AE: An Allozyme perspective on mtDNA variation and evolution of the Death Valley pupfishes (*Cyprinodon*, Cyprinodontidae). *Copeia* 1993, **1993**:275-287.
61. Minckley WL, Miller RR, Norris SM, Schaefer SA: Three New Pupfish Species, *Cyprinodon* (Teleostei, Cyprinodontidae), from Chihuahua, México, and Arizona, USA. *Copeia* 2002, **2002**:687-705.
62. Minckley WL, Hendrickson DA, Bond CE: Geography of western North American freshwater fishes: description and relationships to intracontinental tectonism. In *Zoogeography of North American Freshwater fishes*. Edited by: Hocutt CH, Wiley EO. New York: Wiley-Interscience Publications; 1986:519-613.
63. Zardoya R, Doadrio I: Phylogenetic relationships of Iberian cyprinids: systematic and biogeographical implications. *Proc R Soc B-Biol Sci* 1998, **265**:1365-1372.
64. Chow S, Hazama K: Universal PCR primers for S7 ribosomal protein gene introns in fish. *Mol Ecol* 1998, **7**:1247-1263.
65. López JA, Chen WJ, Ortí G: Esociform phylogeny. *Copeia* 2004, **2004**:449-464.
66. Bossu CM, Near TJ: Gene Trees Reveal Repeated Instances of Mitochondrial DNA Introgression in Orangethroat Darters (Percidae Etheostoma). *Syst Biol* 2009, **58**:114-129.
67. Librado P, Rozas J: DnaSP v5: a software for comprehensive analysis of DNA polymorphism data. *Bioinformatics* 2009, **25**:1451-1452.
68. Stephens M, Donnelly P: A comparison of Bayesian methods for haplotype reconstruction from population genotype data. *Am J Hum Genet* 2003, **73**:1162-1169.
69. Garrick RC, Sunnucks P, Dyer RJ: Nuclear gene phylogeography using PHASE: dealing with unresolved genotypes, lost alleles, and systematic bias in parameter estimation. *BMC Evol Biol* 2010, **10**:118.
70. Petit RJ, Mousadik AE, Pons O: Identifying Populations for Conservation on the Basis of Genetic Markers. *Conserv Biol* 1998, **12**:844-855.
71. Posada D: jModelTest: Phylogenetic model averaging. *Mol Biol Evol* 2008, **25**:1253-1256.
72. Swofford DL: *Phylogenetic analysis using parsimony (* and other methods) V 4.0b 10*. Sunderland MA: Sinauer Associates; 2004.
73. Huelsenbeck JP, Ronquist F: MRBAYES: Bayesian inference of phylogeny. *Bioinformatics* 2001, **17**:754-755.
74. Rambaut A, Drummond AJ: Tracer v1.4.[http://beast.bio.ed.ac.uk/Tracer].
75. Guindon S, Gascuel O: A simple, fast, and accurate algorithm to estimate large phylogenies by maximum likelihood. *Syste Biol* 2003, **52**:696-704.
76. Templeton AR, Crandall KA, Sing CF: A cladistic analysis of phenotypic association with haplotypes inferred from restriction endonuclease mapping and DNA sequence data. III. Cladogram estimation. *Genetics* 1992, **132**:619-633.
77. Clement M, Posada D, Crandall KA: TCS: a computer program to estimate gene genealogies. *Mol Ecol* 2000, **9**:1657-1660.
78. Drummond AJ, Rambaut A: BEAST: Bayesian evolutionary analysis by sampling trees. *BMC Evol Biol* 2007, **7**:214.
79. Dowling TE, Tibbets CA, Minckley WL, Smith GR: Evolutionary relationships of the plagopterins (Teleostei: Cyprinidae) from cytochrome b sequences. *Copeia* 2002, **2002**:665-678.
80. Durand JD, Bianco PG, Laroche J, Gilles A: Insight into the origin of endemic Mediterranean ichthyofauna: Phylogeography of *Chondrostoma* genus (Teleostei, Cyprinidae). *J Hered* 2003, **94**:315-328.
81. Excoffier L, Lischer HEL: Arlequin suite ver 3.5: a new series of programs to perform population genetics analyses under Linux and Windows. *Mol Ecol Resour* 2010, **10**:564-567.
82. Dupanloup I, Schneider S, Excoffier L: A simulated annealing approach to define the genetic structure of populations. *Mol Ecol* 2002, **11**:2571-2581.
83. Fu YX: Statistical tests of neutrality of mutations against population growth, hitchhiking and background selection. *Genetics* 1997, **147**:915-925.
84. Ramos-Onsins SE, Rozas J: Statistical properties of new neutrality tests against population growth. *Mol Biol Evol* 2002, **19**:2092-2100.
85. Rogers AR, Harpending H: Population growth makes waves in the distribution of pairwise genetic differences. *Mol Biol Evol* 1992, **9**:552-569.

doi:10.1186/1471-2148-11-153

Cite this article as: Domínguez-Domínguez et al.: Complex evolutionary history of the Mexican stoneroller *Campostoma ornatum* Girard, 1856 (Actinopterygii: Cyprinidae). *BMC Evolutionary Biology* 2011 **11**:153.

Submit your next manuscript to BioMed Central and take full advantage of:

- Convenient online submission
- Thorough peer review
- No space constraints or color figure charges
- Immediate publication on acceptance
- Inclusion in PubMed, CAS, Scopus and Google Scholar
- Research which is freely available for redistribution

Submit your manuscript at
www.biomedcentral.com/submit

