

# Interferon-induced transmembrane protein-3 rs12252-C is associated with rapid progression of acute HIV-1 infection in Chinese MSM cohort

Yonghong Zhang<sup>a,b,\*</sup>, Shokouh Makvandi-Nejad<sup>c,\*</sup>, Ling Qin<sup>a,b</sup>, Yan Zhao<sup>a,b</sup>, Tong Zhang<sup>a</sup>, Lili Wang<sup>c</sup>, Emmanouela Repapi<sup>d</sup>, Stephen Taylor<sup>d</sup>, Andrew McMichael<sup>b,c</sup>, Ning Li<sup>a,b,\*</sup>, Tao Dong<sup>a,b,c,\*</sup> and Hao Wu<sup>a,\*</sup>

**Background:** The interferon-inducible transmembrane protein-3 (IFITM3) is a protein that restricts multiple pathogenic viruses such as influenza virus. The single-nucleotide polymorphism rs12252-C, which is rare in Caucasian populations, but much more common in the Han Chinese population, has been found in much higher homozygous frequency in patients with severe acute influenza. Until now, there has been no study on the effect of this genetic variant on the clinical control of other viral infections.

**Objectives:** To investigate the impact of IFITM3-rs12252 genotypes on primary HIV-1 infection progression in an acute HIV-1-infected cohort in Beijing (PRIMO), China.

**Design and methods:** We identified IFITM3-rs12252 genotypes of 178 acute HIV-1-infected patients and 196 HIV-negative candidates from the PRIMO cohort. HIV-1 viral load and CD4<sup>+</sup> T-cell counts were monitored at multiple time points during the first year of infection, and the association between IFITM3-rs12252 genotype and disease progression was evaluated.

**Results:** The current study shows that the IFITM3-rs12252 genetic variant affects the progression of HIV-1 infection, but not the acquisition. A significantly higher frequency of the CC/CT genotypes was found in rapid progressors compared to nonprogressors. Patients with CC/CT genotypes showed an elevated peak viremia level and significantly lower CD4<sup>+</sup> T-cell count at multiple time points during the first year of primary infection, and a significantly higher risk of rapid decline of the CD4<sup>+</sup> T-cell count to below 350 cells/ $\mu$ l.

**Conclusion:** A novel association between *IFITM3* gene polymorphism and rapid disease progression is reported in an acute HIV-1-infected MSM cohort in China.

Copyright © 2015 Wolters Kluwer Health, Inc. All rights reserved.

*AIDS* 2015, **29**:889–894

**Keywords:** acute infection, CD4<sup>+</sup> T-cell count, HIV-1, interferon-inducible transmembrane protein 3, rs12252-C allele

<sup>a</sup>Beijing You'an Hospital, Capital Medical University, Beijing, China, <sup>b</sup>CAMS -Oxford University Joint International Centre for Translational Immunology, Nuffield and Radcliffe Departments of Medicine, University of Oxford, <sup>c</sup>MRC Human Immunology Unit, Weatherall Institute of Molecular Medicine, Oxford University, and <sup>d</sup>The Computational Biology Research Group, Weatherall Institute of Molecular Medicine, Oxford University, Oxford, UK.

Correspondence to Tao Dong, MRC Human Immunology Unit, Oxford University, Oxford OX3 9DS, UK.

E-mail: tao.dong@imm.ox.ac.uk

\* Hao Wu, Shokouh Makvandi-Nejad, Ning Li, Tao Dong, and Yonghong Zhang contributed equally to the writing of this article.

Received: 15 December 2014; revised: 7 February 2015; accepted: 19 February 2015.

DOI:10.1097/QAD.0000000000000632

ISSN 0269-9370 Copyright © 2015 Wolters Kluwer Health, Inc. All rights reserved. This is an open access article distributed under the Creative Commons Attribution-Non Commercial License 4.0, where it is permissible to download, share and reproduce the work in any medium, provided it is properly cited. The work cannot be used commercially.

Copyright © 2015 Wolters Kluwer Health, Inc. All rights reserved.

## Introduction

The interferon-inducible transmembrane (IFITM) proteins are known to inhibit the replication of pathogenic viruses such as influenza A, HIV-1, dengue, filoviruses (Marburg virus and Ebola virus) and coronaviruses [e.g. severe acute respiratory syndrome (SARS)] [1–6]. IFITM proteins interfere with viral replication, preceding fusion of the viral and cellular membrane [7]. Further details of the antiviral mechanism of IFITMs remain unknown.

In recent years, the crucial role of IFITM3 protein mostly has been studied in controlling influenza A virus infection. Everitt *et al.* [8] used a knockout mouse model to show mice lacking IFITM3 gene display fulminant viral pneumonia on infection with a low-pathogenicity influenza virus. Likewise, in an in-vitro study, an increase in viral replication was observed in absence of IFITM3, and re-introducing of IFITM3 restricted the replication of influenza A virus [8].

In humans, a rare single-nucleotide polymorphism (SNP) rs12252-C allele of IFITM3, which, if homozygous, alters the outcome of influenza virus infection, has been identified [8,9]. The allele frequency of this SNP is much higher in the Han Chinese population [minor allele frequency (MAF) 0.5] compared to the Northern European population (MAF 0.034) [9]. Previously, we studied the association of the rs12252-C allele with severity of the influenza virus infection in the Chinese patients. We found that 69% of the Chinese patients with severe pandemic influenza A H1N1/09 virus infection carry the CC genotype, compared with 25% in those with mild infection [9].

Two studies have shown a restrictive effect of IFITM3 on the progression of acute HIV-1 infection [10,11]. However, the role of the rs12252-C allele in acute HIV-1 infection has not been explored. Jia *et al.* [10] showed that IFITM3 inhibits viruses that enter the cells via different routes. The presence of IFITM3 on late endosome blocks cytosolic access of pH-dependent viruses, such as influenza A. However, for pH-independent viruses such as HIV-1, IFITM3 appears to restrict viral cell entry at the cell periphery or early endosome. Furthermore, IFITM3 inhibits HIV-1 replication *in vitro* by reducing the expression of HIV-1 proteins such as Gag, Vif and Nef [11]. This raises the question: does the minor allele (of Caucasians) have the same effect on acute HIV-1 infection as it does on influenza virus? This is especially pertinent to the growing concern about the spread of HIV in China, in particular, among MSM. To address this question, we screened 6000 individuals from the HIV primary open cohort (PRIMO) from Beijing, China, and compared the clinical outcome in rs12252-CC/CT and TT-genotyped carriers.

## Methods and materials

### Study population

Every 2 months, 6000 volunteers from the PRIMO cohort in Beijing were checked for early signs of acute HIV-1 infection, as described previously [12]. In addition, their plasmas were collected and tested for HIV-1 antibodies and HIV-1 RNA levels. Amongst them, 178 individuals were diagnosed with acute HIV-1 infection, and another 196 volunteers, who were HIV-1-negative, were enrolled in the control group. Every 3 months, thereafter, from detection of seroconversion, whole blood specimens were collected. Following blood collection, plasma and peripheral blood mononuclear cells (PBMCs) were separated for further studies. This study was approved by the Institutional Review Board of Beijing You'An Hospital, and written informed consent was obtained from all patients.

### Clinical definitions

Acute HIV-1 infection was defined by a positive HIV-1 RNA test and negative/indeterminate HIV-1 ELISA and Western blot tests [12]. Rapid clinical progression was defined as when the time to treatment initiation ( $CD4^+ < 350$  cells/ $\mu$ l) or time to an estimated  $CD4^+$  lymphocyte count lower than 350 cells/ $\mu$ l was within 1 year of seroconversion. Those who did not show a significant  $CD4^+$  T-cell decline were defined as nonprogressors [13]. Initial and peak viremia levels were defined according to the dynamics of HIV-1 viremia in acute HIV-1-infected patients [14]: initial viral load indicates HIV-1 viral load detected at Fiebig stage II–III [14], and peak viremia level refers to the highest viral load detected during the acute HIV-1 infection. For set-point definition, the established criteria described by Fellay *et al.* [13] were strictly followed, defining the three-phase evolution of HIV-1 viremia to calculate the average viral load set-point (Table 1).

### Laboratory detection

For detection of specific antibodies to HIV-1, standard HIV type 1 (HIV-1) ELISA (Abbott, Abbott Park, Illinois, USA) and western blot analysis (Genelabs, Redwood City, California, USA) kits were used. The copies of plasma HIV-1 RNA were quantified in serum with Roche Amplicor kit (Roche Molecular Diagnostics, Indianapolis, Indiana, USA). The absolute counts of  $CD3^+/CD4^+/CD8^+$  T cells ( $CD4^+T$ ) and  $CD3^+/CD4^-CD8^+$  T cells ( $CD8^+T$ ) were measured, using TriTEST Three-Color reagents (BD Company, Franklin Lakes, New Jersey, USA), and MultiSET software in the FACSCalibur Flow Cytometry System.

To determine the HIV-1 subtypes, HIV-1 *gag* genes from 174 infected individuals were amplified and sequenced [Beijing Institute of Genomics (BGI), Shenzhen, China]. The nucleotide sequences were analyzed, using

**Table 1. Clinical and laboratory characteristics.**

	HIV-negative MSM (196)	Acute HIV infection (178)			P value
		Total (178)	Rapid progressors (74)	Nonprogressors (104)	
Age (years)	33.03 ± 8.79	32.05 ± 8.97	32.40 ± 8.12	31.81 ± 9.55	0.675
Sex (F/M)	0/196	0/178	0/74	0/104	NA
CD4 <sup>+</sup> T-cell count (cells/μl)					
Seroconversion	N.A.	501.08 ± 170.16	384.45 ± 124.17	570.53 ± 155.60	<0.001
3rd month	N.A.	509.20 ± 173.46	379.61 ± 112.05	602.14 ± 148.42	<0.001
6th month	N.A.	477.73 ± 187.99	335.79 ± 89.91	566.79 ± 78.65	<0.001
12th month	N.A.	432.55 ± 172.71	278.01 ± 78.77	515.76 ± 150.87	<0.001
HIV-1 VL (log/ml)					
Initial VL	N.A.	4.64 ± 0.99	4.85 ± 0.89	4.54 ± 1.03	0.165
Peak VL	N.A.	5.46 ± 0.74	5.59 ± 0.81	5.41 ± 0.72	0.487
Set-point VL	N.A.	4.22 ± 0.87	4.61 ± 0.68	4.02 ± 0.89	0.002

F, female; M, male; NA, not available; VL, viral load.

Recombinant Identification Program: RIP 3.0 software (Alamos HIV sequence database).

**Sequencing and genotyping of rs12252**

Genomic DNA was extracted from PBMCs using the PureGene DNA Isolation kit (Gentra Systems, Detroit, Michigan, USA). The region encompassing the human IFITM3 rs12252 sequences was amplified, sequenced and analyzed as described previously [9].

**Statistical analysis**

Statistical analysis of the genetic data was performed using the chi-square test. For association testing under different genetic models, Fisher’s exact test was used since the chi-square approximation might not hold for small sample size. Student’s *t* test was used to compare values between IFITM3-TT and CT/CC groups in which case data were normally distributed (evaluated with Kolmogorov–Smirnov test), and nonparametric *t* test (Mann–Whitney test) was used when data were not normally distributed. For survival analysis, log-rank (Mantel–Cox) test was employed to identify the difference of progression to CD4<sup>+</sup> cells below 350 between patients with TT and CT/CC genotype. Statistical test differences were

considered significant if the *P* values were less than 0.05. Analyses were performed with the GraphPad Prism v 5 (GraphPad Software, LaJolla, California, USA).

**Results**

**Clinical and laboratory characteristics of study participants**

From 178 HIV-1-positive infected individuals, 74 were identified as rapid progressors (as described in the ‘Methods and materials’ section), and the other 104 patients with no significant CD4<sup>+</sup> decline were grouped as nonprogressors. A significant difference in CD4<sup>+</sup> T-cell count between rapid progressors and nonprogressors was observed at seroconversion (384.45 ± 124.17 vs. 570.53 ± 155.60; *P* < 0.001), 3 months (379.61 ± 112.05 vs. 602.14 ± 148.42; *P* < 0.001), 6 months (335.79 ± 89.91 vs. 566.79 ± 78.65; *P* < 0.001), and 12 months (278.01 ± 78.77 vs. 515.76 ± 150.87; *P* < 0.001) after the seroconversion. In addition, progressors showed to have a significantly higher viral load at set-point (4.61 ± 0.68) compared to the nonprogressors (4.02 ± 0.89; *P* = 0.002; Table 2).

**Table 2. Allele and genotype frequencies of IFITM3 rs12252 in Chinese population, MSM HIV-1-negative control group, and HIV-1 acute cohort.**

Genotype	HIV-1 (–) MSM (196)	Acute HIV infection		
		Total (178)	Rapid progressors (74)	Nonprogressors (104)
CC	69 (35.20%)	57 (32.02%)	22 (29.73%)	35 (33.65%)
CT	86 (43.88%)	89 (50%)	46 (62.16%)	43 (41.35%)
TT	41 (20.92%)	32 (17.98%)	6 (8.11%)	26 (25%)
Allele C	224 (52.78%)	203 (57.02%)	90 (60.81%)	113 (54.33%)
Allele T	168 (47.22%)	153 (42.98%)	58 (39.19%)	95 (45.67%)
Statistical analysis <sup>a</sup>				
Parameter				
Genotype <sup>b</sup>	$\chi^2$	1.441	9.215	0.655
	<i>P</i> value	0.487	0.010	0.721
Allele <sup>b</sup>	$\chi^2$	0.001	0.594	0.438
	<i>P</i> value	0.973	0.441	0.508

<sup>a</sup>Compared with HIV-1 (–) MSM.

<sup>b</sup> $\chi^2$  and *P* values were calculated by chi-square test.

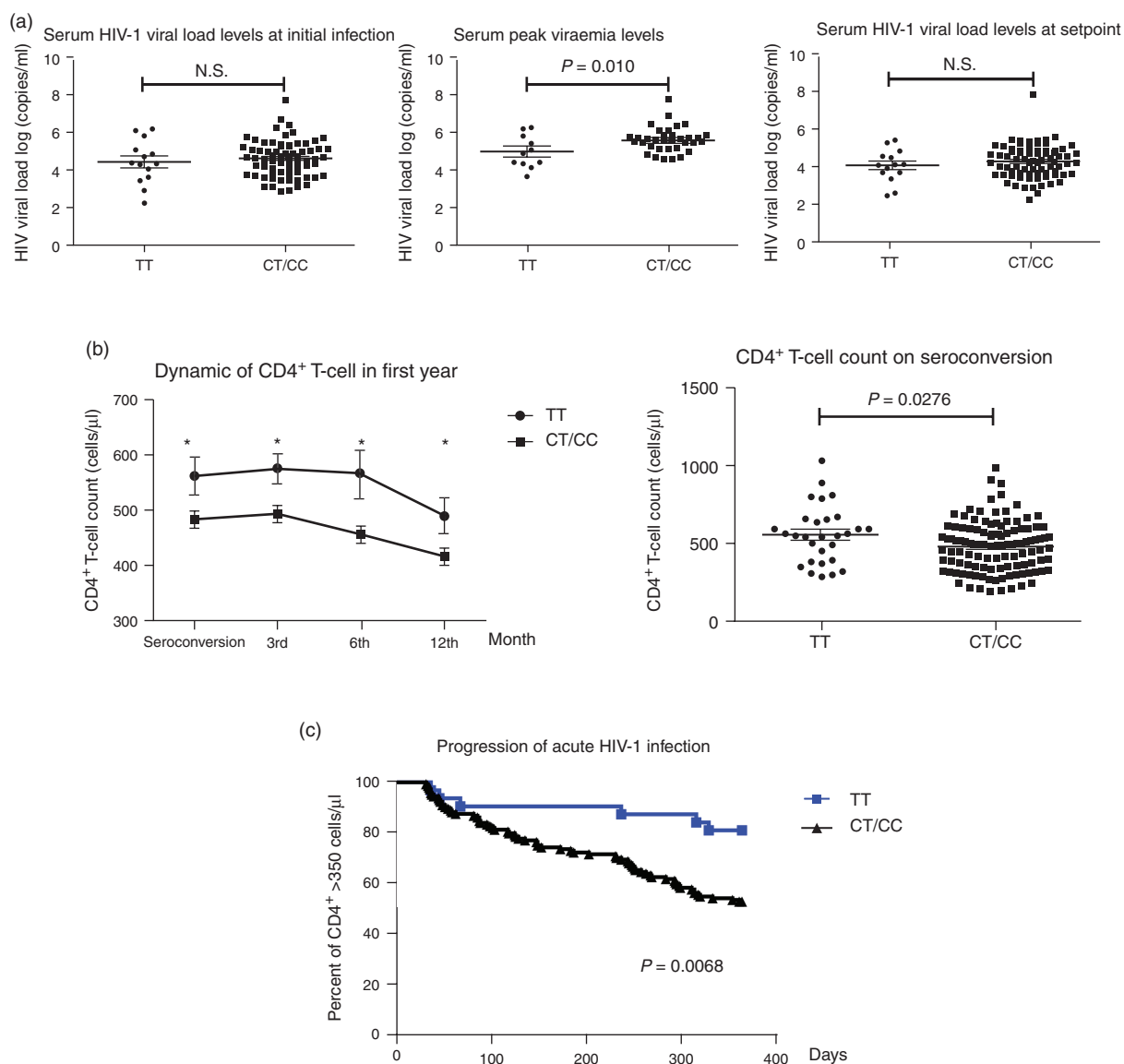
### The C allele at single-nucleotide polymorphism 12252 was associated with rapid progression

Three hundred base pairs of the IFITM3 locus encompassing SNP rs12252 were sequenced in all acute HIV-1-infected patients and in the control group. Among them, 91.89% of rapid progressors carried CC/CT genotypes, a higher frequency than in HIV-1-negative individuals (79.08%, 155/196;  $P=0.01$ ), whereas the genotype frequency of the nonprogressors was not significantly different from the HIV-1-negative group ( $P=0.721$ ). The association of rs12252 with the progression of the infection was tested in other genetic models, as described previously [9]. A significantly higher frequency of the CC/CT genotypes was found in rapid progressors (91.89%, 68/74), compared with

nonprogressors (75%, 78/104;  $P=0.004$ ). In particular, under the dominant model, the carriers of the C allele showed a three-fold increase in the risk of rapid infection progression compared with carriers of the T allele [ $P=0.004$ , odds ratio (OR) 3.778, 95% confidence interval (CI) 1.468–9.723].

### Elevated peak viremia level and degressive CD4<sup>+</sup> T-cell count in acute HIV-1-infected patients with CC/CT genotypes

At peak viremia, the viral load was significantly higher in CC/CT carriers, compared to TT genotype carriers ( $5.624 \pm 0.114$  vs.  $4.962 \pm 0.260$ ;  $P=0.010$ ; Fig. 1a). However, there was no significant difference in the viral load levels between CC/CT and TT genotype carriers at



**Fig. 1. C allele at IFITM3-rs12252 associated with rapid progression of acute HIV-1 infected patients.** (a) Serum HIV-1 viral load levels at initial infection, peak viraemia and setpoint in patients with TT and CT/CC genotypes; (b) different dynamic of CD4<sup>+</sup> T-cell count, and (c) the progress of acute HIV-1 infection between patients with TT and CT/CC genotype.

initial infection and at viral set point. Both heterozygotes and homozygotes for C allele showed significantly lower CD4<sup>+</sup> T-cell counts than homozygotes for the T allele, at the seroconversion time point ( $485.2 \pm 15.33$  vs.  $563.0 \pm 34.54$ ;  $P = 0.0276$ ), to the third ( $494.9 \pm 14.78$  vs.  $576.0 \pm 27.78$ ;  $P = 0.0197$ ), sixth ( $458.1 \pm 14.58$  vs.  $566.7 \pm 43.37$ ;  $P = 0.0232$ ), and at 12 months ( $418.3 \pm 14.80$  vs.  $492.0 \pm 32.64$ ;  $P = 0.0324$ ) after acute HIV-1 infection (Fig. 1b). To identify whether there is a difference in disease progression in individuals with CD4<sup>+</sup> T-cell counts below 350, who are CC/CT genotypes carriers versus the TT genotype carriers, a log-rank (Mantel–Cox) test was performed. The result of this test verified that CC/CT genotype carriers are more likely to become rapid progressors ( $P = 0.0068$ ; Fig. 1c).

### The effect of rs12252-C allele on rapid progression is independent of HIV-1 subtypes

Four different HIV-1 subtypes were identified among 125 acute HIV-1-infected patients in this cohort, and their distribution was described: subtype B 34.4% (43/125), subtype BC 11.2% (14/125), subtype C 1.6% (2/125), and subtype AE 52.8% (66/125). We did not find any difference in the distribution of HIV-1 subtypes between rapid and nonprogressors (data not shown). However, a higher percentage of rapid progressors were CC/CT genotype carriers, regardless of the infecting HIV-1 subtype (data not shown).

## Discussion

In the current study, we showed that the IFITM3-rs12252-C genetic variant is associated with more rapid progression of HIV-1 infection. A significantly higher frequency of the CC/CT genotypes was observed in rapid progressors compared to nonprogressors. We further found that CC/CT genotype carriers had a higher peak viremia level and lower CD4<sup>+</sup> T-cell count. More strikingly, those with the CC/TC genotype had a significantly higher chance of their CD4<sup>+</sup> T-cell counts falling to less than 350 cells/ $\mu$ l during the first year of infection. There was, however, no genetic association with acquisition of infection, since there were no significant difference in the distribution of the IFITM3 genotypes between acute HIV-1-infected patients and the HIV-1-negative controls.

The current results could partly explain why there is more rapid progression of HIV-1 infection observed in the Beijing PRIMO cohort, which is a Chinese cohort, when compared to the Concerted Action on Sero-Conversion to AIDS and Death in Europe (CASCADE) cohort [15]. In the PRIMO study, CD4<sup>+</sup> T-cell decline and viral load increase were faster in this Chinese MSM cohort, 75% CT/CC genotype carriers compared to CASCADE, a population with only 2–8% CT/CC

genotypes carriers [9]. However, many other factors, both in the host and virus, are likely to contribute to these differences.

It is still not clear how SNP rs12252 affects the expression of IFITM3. It has been predicted that this mutation may result in expression of truncated IFITM3, which lacks the first 21 amino acids at the N-terminus [8]. Previous mechanistic studies have all been based on this assumption, and the conclusions have been rather controversial [8,16]). However, the existence of a truncated IFITM3 protein in cells with the SNP rs12252-C allele has not yet been shown. In cells that were transfected with a synthetic truncated version lacking the first 21 amino acids, IFITM3 was relocated from the late endosome to the cell periphery [10]. If IFITM3 is relocated to the cell surface, it might affect HIV-1 viral entry [10]. Moreover, Tartour *et al.* [17] have suggested that IFITM proteins are incorporated into HIV-1 virion particles and impair their infectivity. These findings could partly explain our results.

Nonetheless, more studies are required to answer the following questions: does the presence of SNP rs12252-C allele results in expression of the truncated IFITM3 protein, which localizes differently from the full length IFITM3, or does it simply affect the level of expression of IFITM3? We are currently investigating the answers to these questions.

In conclusion, our data clearly showed that the CC/CT genotypes are associated with the rapid progression of acute HIV-1 infection, regardless of the HIV-1 subtype. However, it is not associated with the disease acquisition.

## Acknowledgements

The work was supported by National Natural Science Foundation of China (81271842, 81228020, and 81320108017); Beijing Natural Science Foundation (7132098); National S&T Major Project for Infectious Diseases Control (2012ZX10001006-001-008, 2013ZX10001004-001-002, 2012ZX10001003, 2012ZX10001006, and 2012ZX10004904-002-002); Beijing Municipal Science & Technology Commission (D131100005313004, D131100005313005, D141100000314005, and D141100000314002); Capital Health Development (2011-2018-06, 2011-1011-02); Medical Research Council, UK; and Wellcome Trust, Institutional Strategic Support Fund.

Author contributions: T.D., Y.H.Z., A.M. designed the study; H.W., N.L., T.Z., and Y.Z. collected and analyzed clinical data; Q.L., Y.Z., and L.W. performed the experiments for this study; Y.H.Z., S.M.N., E.R., S.T., and T.D. analyzed the data; and finally, Y.H.Z., S.M.N., and T.D. wrote the paper. A.M. proof-read the paper.

## Conflicts of interest

There are no conflicts of interest.

## References

1. Brass AL, Huang IC, Benita Y, John SP, Krishnan MN, Feeley EM, *et al.* **The IFITM proteins mediate cellular resistance to influenza A H1N1 virus, West Nile virus, and dengue virus.** *Cell* 2009; **139**:1243–1254.
2. Feeley EM, Sims JS, John SP, Chin CR, Pertel T, Chen LM, *et al.* **IFITM3 inhibits influenza A virus infection by preventing cytosolic entry.** *PLoS Pathog* 2011; **7**:e1002337.
3. Jiang D, Weidner JM, Qing M, Pan XB, Guo H, Xu C, *et al.* **Identification of five interferon-induced cellular proteins that inhibit west nile virus and dengue virus infections.** *J Virol* 2010; **84**:8332–8341.
4. Huang IC, Bailey CC, Weyer JL, Radoshitzky SR, Becker MM, Chiang JJ, *et al.* **Distinct patterns of IFITM-mediated restriction of filoviruses, SARS coronavirus, and influenza A virus.** *PLoS Pathog* 2011; **7**:e1001258.
5. Weidner JM, Jiang D, Pan XB, Chang J, Block TM, Guo JT. **Interferon-induced cell membrane proteins, IFITM3 and tetherin, inhibit vesicular stomatitis virus infection via distinct mechanisms.** *J Virol* 2010; **84**:12646–12657.
6. Raychoudhuri A, Shrivastava S, Steele R, Kim H, Ray R, Ray RB. **ISG56 and IFITM1 proteins inhibit hepatitis C virus replication.** *J Virol* 2011; **85**:12881–12889.
7. Diamond MS, Farzan M. **The broad-spectrum antiviral functions of IFIT and IFITM proteins.** *Nat Rev Immunol* 2013; **13**:46–57.
8. Everitt AR, Clare S, Pertel T, John SP, Wash RS, Smith SE, *et al.* **IFITM3 restricts the morbidity and mortality associated with influenza.** *Nature* 2012; **484**:519–523.
9. Zhang YH, Zhao Y, Li N, Peng YC, Giannoulatou E, Jin RH, *et al.* **Interferon-induced transmembrane protein-3 genetic variant rs12252-C is associated with severe influenza in Chinese individuals.** *Nat Commun* 2013; **4**:1418.
10. Jia R, Pan Q, Ding S, Rong L, Liu SL, Geng Y, *et al.* **The N-terminal region of IFITM3 modulates its antiviral activity by regulating IFITM3 cellular localization.** *J Virol* 2012; **86**:13697–13707.
11. Chutiwitoonchai N, Hiyoshi M, Hiyoshi-Yoshidomi Y, Hashimoto M, Tokunaga K, Suzu S. **Characteristics of IFITM, the newly identified IFN-inducible anti-HIV-1 family proteins.** *Microbes Infect* 2013; **15**:280–290.
12. Huang X, Chen H, Li W, Li H, Jin X, Perelson AS, *et al.* **Precise determination of time to reach viral load set point after acute HIV-1 infection.** *J Acquir Immune Defic Syndr* 2012; **61**:448–454.
13. Fellay J, Shianna KV, Ge D, Colombo S, Ledergerber B, Weale M, *et al.* **A whole-genome association study of major determinants for host control of HIV-1.** *Science* 2007; **317**:944–947.
14. McMichael AJ, Borrow P, Tomaras GD, Goonetilleke N, Haynes BF. **The immune response during acute HIV-1 infection: clues for vaccine development.** *Nat Rev Immunol* 2010; **10**:11–23.
15. Huang X, Lodi S, Fox Z, Li W, Phillips A, Porter K, *et al.* **Rate of CD4 decline and HIV-RNA change following HIV seroconversion in men who have sex with men: a comparison between the Beijing PRIMO and CASCADE cohorts.** *J Acquir Immune Defic Syndr* 2013; **62**:441–446.
16. Williams DE, Wu WL, Grotefend CR, Radic V, Chung C, Chung YH, *et al.* **IFITM3 polymorphism rs12252-C restricts influenza A viruses.** *PLoS One* 2014; **9**:e110096.
17. Tartour K, Fau-Appourchaux R, Appourchaux R, Fau-Gaillard J, Gaillard J, Fau-Nguyen X-N, *et al.* **IFITM proteins are incorporated onto HIV-1 virion particles and negatively imprint their infectivity.** *Retrovirology* 2014; **11**:103.