

# Risk stratification of cardiac arrhythmias and sudden cardiac death in type 2 diabetes mellitus patients receiving insulin therapy: A population-based cohort study

Sharen Lee<sup>1</sup> | Kamalan Jeevaratnam PhD<sup>2</sup> | Tong Liu MD PhD FESC<sup>3</sup> |  
Dong Chang MD PhD<sup>4</sup> | Carlin Chang MBChB MPhil MRCP<sup>5</sup> |  
Wing Tak Wong PhD<sup>6</sup> | Ian Chi Kei Wong PhD FFPH<sup>7,8</sup> |  
Gregory Y. H. Lip MD FRCP FACC<sup>9</sup>  | Gary Tse MD PhD FRCP<sup>2,3,10</sup> 

<sup>1</sup>Diabetes Research Unit, Cardiovascular Analytics Group, Hong Kong, China-UK Collaboration, China

<sup>2</sup>Faculty of Health and Medical Sciences, University of Surrey, Guildford, UK

<sup>3</sup>Tianjin Key Laboratory of Ionic-Molecular Function of Cardiovascular disease, Department of Cardiology, Tianjin Institute of Cardiology, Second Hospital of Tianjin Medical University, Tianjin, China

<sup>4</sup>Xiamen Cardiovascular Hospital, Xiamen University, Xiamen, China

<sup>5</sup>Division of Neurology, Department of Medicine, Queen Mary Hospital, Hong Kong, China

<sup>6</sup>School of Life Sciences, Chinese University of Hong Kong, Hong Kong, China

<sup>7</sup>Department of Pharmacology and Pharmacy, University of Hong Kong, Pokfulam, China

<sup>8</sup>Medicines Optimisation Research and Education (CMORE), UCL School of Pharmacy, London, UK

<sup>9</sup>Liverpool Centre for Cardiovascular Science, University of Liverpool and Liverpool Heart & Chest Hospital, Liverpool, United Kingdom; and Department of Clinical Medicine, Aalborg University, Aalborg, Denmark

<sup>10</sup>Kent and Medway Medical School, Canterbury, Kent, UK

## Correspondence

Dr Kamalan Jeevaratnam PhD, Faculty of Health and Medical Sciences, University of Surrey, GU2 7AL, Guildford, UK.  
Email: k.jeevaratnam@surrey.ac.uk

Dr Gary Tse PhD, FRCP, Tianjin Key Laboratory of Ionic-Molecular Function of Cardiovascular disease, Department of Cardiology, Tianjin Institute of Cardiology, Second Hospital of Tianjin Medical University, Tianjin 300211, China Faculty of Health and Medical Sciences, University of Surrey, GU2 7AL, Guildford, UK.  
Email: g.tse@surrey.ac.uk

## Abstract

**Introduction:** Metabolic abnormalities may exacerbate the risk of adverse outcomes in patients with type 2 diabetes mellitus. The present study aims to assess the predictive value of HbA1c and lipid variability on the risks of sudden cardiac death (SCD) and incident atrial fibrillation (AF).

**Methods:** The retrospective observational study consists of type 2 diabetic patients prescribed with insulin, who went to publicly funded clinics and hospitals in Hong Kong between January 1, 2009 and December 31, 2009. Variability in total cholesterol, low-density lipoprotein-cholesterol (LDL-C), high-density lipoprotein-cholesterol (HDL-C), triglyceride, and HbA1c were assessed through their SD and coefficient of variation. The primary outcomes were incident (1) ventricular tachycardia/ventricular fibrillation, actual or aborted SCD and (2) AF.

**Results:** A total of 23 329 patients (mean  $\pm$  SD age:  $64 \pm 14$  years old; 51% male; mean HbA1c  $8.6 \pm 1.3\%$ ) were included. On multivariable analysis, HbA1c, total

cholesterol, LDL-C and triglyceride variability were found to be predictors of SCD ( $p < .05$ ).

**Conclusion:** HbA1c and lipid variability were predictive of SCD. Therefore, poor glucose control and variability in lipid parameters in diabetic patients are associated with aborted or actual SCD. These observations suggest the need to re-evaluate the extent of glycemic control required for outcome optimization.

#### KEYWORDS

cardiac arrhythmias, sudden cardiac death, type 2 diabetes

## 1 | INTRODUCTION

Sudden cardiac death (SCD) is a leading cause of death worldwide, accounting for approximately 25% of deaths of cardiovascular origin.<sup>1</sup> By contrast, atrial fibrillation (AF), the most common sustained arrhythmia amongst adults, is increasingly prevalent around the world, particularly amongst developed countries.<sup>2,3</sup> Significant increases in morbidity and mortality amongst large-scale epidemiological studies have been demonstrated amongst AF patients, including an increase in SCD risk.<sup>4-7</sup> Furthermore, type 2 diabetes mellitus increases the risk of SCD, as demonstrated by a recent meta-analysis of population-based prospective studies.<sup>8</sup>

With the global shift towards a more personalized approach in the management of diabetes, there is an increasing interest in exploring the application of new parameters, such as HbA1c and lipid variability, to better monitor disease progression and evaluate the prognosis. Although the exact mechanisms remain unclear, increased long-term glycemic and lipid variability is hypothesized to lead to endothelial dysfunction via an increase in oxidative stress.<sup>9-11</sup> Since hemoglobin has an average lifespan of 100 days, HbA1c can reflect glycemic control in recent months. Therefore, HbA1c variability is not affected by short-term glycemic changes due to diet and medication changes, thus it is a better representation of long-term glycemic variation. However, existing studies have focused on risk prediction of all-cause mortality and general cardiovascular adverse events,<sup>12-16</sup> with a limited number of studies exploring specifically arrhythmic risks amongst diabetics. Moreover, those type 2 diabetics who are partially or fully dependent on insulin are more likely to have severe disease and may be at higher risks of arrhythmias.

The aim of the present study was to assess the predictive value of HbA1c and lipid variability towards aborted or successful SCD, as well as incident AF in type 2 diabetic patients receiving insulin therapy.

## 2 | METHODS

This study is a retrospective observational study approved by The Joint Chinese University of Hong Kong – New Territories East Cluster Clinical Research Ethics Committee (Application reference: 2018.462, 2018.643, 2019.361 [approval date: 15th August 2019]). The study

cohort contains type 2 diabetic patients with insulin prescribed from any hospitals and outpatient clinics under the Hong Kong Hospital Authority from January 1, 2009 to December 31, 2009. The study cohort from 10 years ago was selected to ensure there is adequate follow-up especially for rarer events such as ventricular arrhythmias and SCD. Clinical and biochemical data of eligible patients were obtained through the clinical data analysis and reporting system (CDARS), an electronic healthcare record database that integrates data across all publicly funded hospitals and clinics in Hong Kong. This system has been used by our team and other teams to conduct population-based studies on different cardiovascular diseases,<sup>17-20</sup> including diabetes mellitus,<sup>21</sup> in the past.

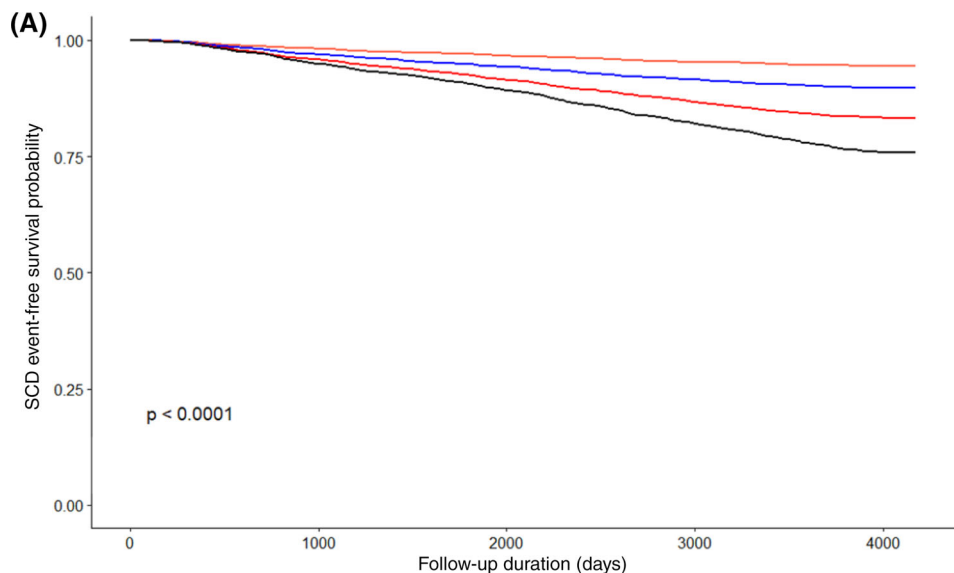
### 2.1 | Patient data

Clinical and biochemical data of the present cohort were extracted from CDARS. The outcomes of the present study are the occurrence of SCD and AF from January 1, 2009 to December 31, 2019. SCD is defined as episodes of VT, VF, or nonspecific cardiac arrest, which were diagnosed under clinical judgment with electrocardiographic or biochemical findings and subsequently coded into hospital records. Both aborted and actual SCD events were included. VT/VF on electrophysiological study is not included. Hypoglycemia-induced cases of SCD or AF were defined as cases with dextrose infusion during the admission episode or had blood glucose measured  $\leq 3.9$  mg/dL. Demographic details, including age and sex, were extracted. Patients were categorized into four groups based on their age: below age 55, between ages 55 and 64, between ages 65 and 74, above and include age 75. The number of baseline acute hospitalization episodes between January 1, 2004 and December 31, 2008 was also obtained. Furthermore, the average daily dose of different classes of cardiovascular medications and antidiabetic agents was calculated by averaging the multiple between the daily dose frequency and drug dose by all patients with prescriptions of the specific drug class. Eight classes of antidiabetic agents were examined: Insulin, sulphonylurea, biguanide, alpha-glucosidase inhibitor, thiazolidinedione, dipeptidyl peptidase-4 inhibitor (DPP-4i), glucagon-like peptide receptor-1 agonist (GLP-1), and meglitinide. Data on five classes of cardiovascular drugs were obtained: angiotensinogen-converting-enzyme inhibitor/angiotensin

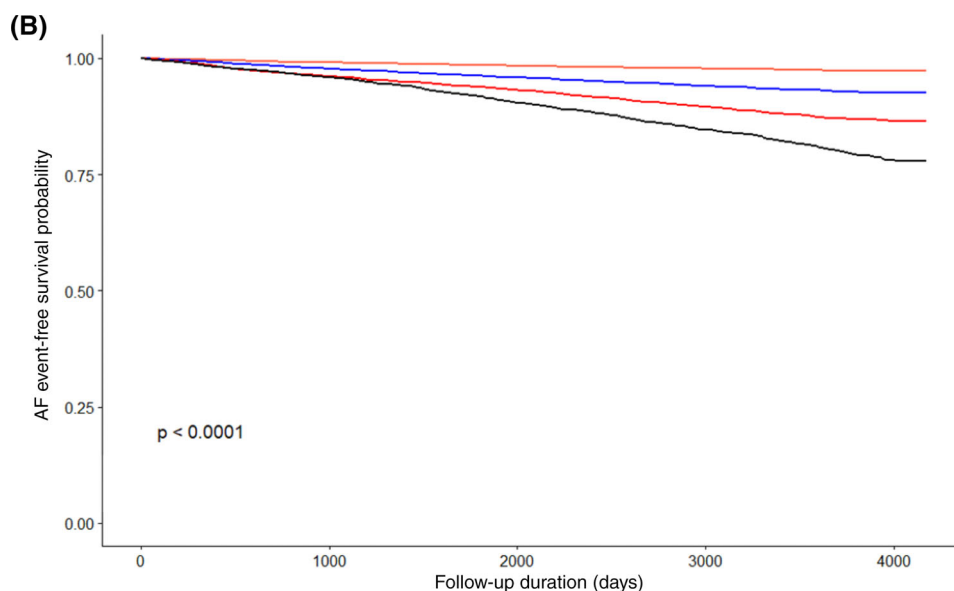
receptor blocker (ACEI/ARB), beta-adrenergic inhibitor, calcium channel blocker (CCB), diuretics, and lipid-lowering agents

In terms of patient comorbidities, the number of nondiabetic comorbidities and diabetes-related complications between January 1, 1999 and December 31, 2008 were obtained. The specific diabetic-

related complications recorded include: (1) Amyotrophy, (2) Arthropathy, (3) Hyperosmolar hyperglycemic state/diabetic ketoacidosis, (4) Hypoglycemia, (5) Neuropathy, (6) Retinopathy/maculopathy, (7) Peripheral vascular disease/angiopathy, and (8) Nephropathy. Patient's past medical history of the following conditions that initiated



Age group	0	1000	2000	3000	4000
<55	5511	5195	4851	4530	4248
55-64	5745	5223	4693	4134	3649
65-74	6032	5070	4111	3272	2587
>75	6041	4464	3022	1973	1266



Age group	0	1000	2000	3000	4000
<55	5511	5197	4849	4507	4194
55-64	5745	5172	4609	4025	3519
65-74	6032	4929	3933	3081	2420
>75	6041	4351	2854	1846	1188

**FIGURE 1** (A) Kaplan-Meier survival curves of different age groups for sudden cardiac death. (B) Kaplan-Meier survival curves of different age groups for atrial fibrillation

between January 1, 1999 and December 31, 2008 were also extracted: (1) Chronic kidney disease (CKD), (2) Chronic obstructive pulmonary disease (COPD), (3) Chronic liver disease (CLD), (4) Heart failure (HF), (5) Ischemic heart disease (IHD), (6) Hypertension, (7) Acute myocardial infarction, and (8) Stroke. International classification of disease, ninth edition (ICD-9) codes was used to extract the study outcomes and pre-existing comorbidities (Supplementary Table 1), whilst the diabetic complications were extracted using the ICD-9 based hospital authority master disease code table for greater specificity.

Baseline data of urinalysis, renal and liver function tests, complete blood count, and other blood tests within the year 2008 were extracted. Urinalysis results include: (1) Urine albumin/creatinine ratio, (2) Creatinine clearance, (3) 24-hours total urine protein and albumin, (4) Spot urine protein, albumin, and glucose. Indices from complete blood count include: (1) The absolute number of hemoglobin, basophil, eosinophil, platelet, red and white blood cell, (2) Mean corpuscular volume, (3) Mean corpuscular hemoglobin concentration, (4) Mean corpuscular hemoglobin (MCH), (5) Hematocrit. The presence of anaemia, defined by sex-based thresholds of below 13 g/dl for male and 12 g/dl for female, were obtained. Blood test results extracted include: (1) Serum creatinine, (2) Serum sodium and potassium, (3) Serum urea and urate, (4) Total serum protein and albumin, (5) Total serum bilirubin, alanine aminotransferase and alkaline phosphatase, (6) Fasting and random blood glucose. The presence of hypoglycemia at baseline and frequency of hypoglycemic episodes were extracted. Hypoglycemia was defined by fasting or random blood glucose below 3.9 mg/mmol.

The following blood results between January 1, 2004 and December 31, 2008 were extracted for the evaluation of their mean, variability and baseline value: (1) Total cholesterol, (2) High-density lipoprotein cholesterol (HDL-C), (3) Low-density lipoprotein cholesterol (LDL-C), (4) Total triglyceride, and (5) HbA1c. LDL-C results included findings from both direct and calculated measurements. Variability analysis of a biochemical index was only executed on patients with at least three measurements.

## 2.2 | Statistical analysis

Statistical analysis was performed using R Studio, and statistical significance was defined as  $p$  value  $< .05$ . Kaplan–Meier survival curve was used to portray the difference in actual or aborted SCD and AF survival between patients of different age groups, with the statistical significance of the intergroup difference evaluated using the log-rank test. Temporal variability of HbA1c and lipid indices were evaluated using calculated parameters of SD and coefficient of variation (CV). CV was measured by multiplying 100-fold of the value calculated by the ratio SD and mean. SD and CV were used to measure variability since they were less affected by outliers. Whilst SD is independent of the mean, CV is independent of the scale thus more sensitive to small changes to the mean. To identify predictors for shorter time to aborted or actual SCD and AF occurrence, univariable Cox regression was first

applied to clinical and biochemical parameters. Patients with missing data were excluded from the analysis. Furthermore, due to their limited prescription towards the study cohort, GLPA and meglitinide were not included. Subsequently, parameters with  $p$  value  $< 0.10$  were included in the multivariable Cox regression model. Only patients with no missing data for the selected parameters, and at least three measurements for the selected variability predictors, were included in the multivariate models. No data imputation was performed.

The inter-relations between HbA1c and lipid variability with intermittent hypoglycemia were evaluated using logistic and Poisson regression. Logistic regression was also used to examine the relationship between baseline hypoglycemia frequency and (1) occurrence of SCD/AF or (2) aborted or actual SCD/AF episodes that were associated with hypoglycemia. Odds ratios (ORs) were reported from logistic and Poisson regression, whereas hazard ratios were reported from Cox regression, along with the 95% confidence intervals.

## 3 | RESULTS

The present study included 23 329 patients (mean age =  $64.3 \pm 13.8$ , male = 50.8%, average mean HbA1c =  $8.6 \pm 1.3\%$ , all-cause mortality = 50.5%). The cohort was divided into four age groups:  $< 55$  ( $n = 5511$ ),  $55–64$  ( $n = 5745$ ),  $65–74$  ( $n = 6032$ ),  $> 75$  ( $n = 6041$ ), with a significant intergroup difference in survival for both aborted or actual SCD ( $p < .0001$ ) and incident AF ( $p < .0001$ ; Figure 1A, B). The baseline clinical and biochemical characteristics of the cohort are

**TABLE 1** Baseline clinical characteristics

	n	%
Male	11 842	50.8
Comorbidities		
Chronic kidney disease	2099	9.00
Chronic obstructive pulmonary disease	783	3.36
Heart failure	2355	10.1
Ischemic heart disease	3904	16.7
Hypertension	8538	36.6
Chronic liver disease	1335	5.72
Acute myocardial infarction	1224	5.25
Stroke	2826	12.1
Pre-existing diabetic complications		
Amyotrophy	70	0.300
Arthropathy	20	0.086
Hyperosmotic Hyperglycemic State/ diabetic ketoacidosis	1267	5.43
Hypoglycemia	2787	11.9
Neuropathy	1339	5.74
Retinopathy/maculopathy	3848	16.5
Peripheral vascular disease/angiopathy	544	2.33
Nephropathy	3420	14.7

**TABLE 2** Baseline biochemical characteristics

	Mean	SD
<b>Urinalysis</b>		
Albumin/creatinine ratio (mg/mmol)	40.3	125
Creatinine clearance (ml/min)	52.9	35.2
Spot protein (g/d)	1.19	1.96
Spot albumin (mg/L)	179	555
Spot glucose (mmol/L)	12.5	6.54
24-hours total protein (g/d)	1.20	1.99
24-hours total albumin (mg/d)	279	677
<b>Baseline blood test</b>		
Fasting glucose (mmol/L)	8.90	3.66
Random glucose (mmol/L)	12.2	7.36
HbA1c (%)	8.56	1.93
Total cholesterol (mmol/L)	4.74	1.12
High-density lipoprotein (HDL) cholesterol (mmol/L)	1.22	0.387
Calculated low-density lipoprotein (LDL) cholesterol (mmol/L)	2.74	0.930
Direct LDL cholesterol (mmol/L)	2.81	0.924
Triglyceride (mmol/L)	1.83	1.74
Thyroid-stimulating globulin (TSH) (mIU/L)	2.28	4.13
Free thyroxine (fT4) (pmol/L)	14.7	37.3
<b>Renal function test</b>		
Creatinine (umol/L)	146	160
Sodium (mmol/L)	139	3.33
Potassium (mmol/L)	4.31	0.507
Urate (umol/L)	0.412	0.128
Urea (mmol/L)	8.98	6.11
<b>Liver function test</b>		
Albumin (g/L)	39.1	5.53
Alanine aminotransferase (ALT) (U/L)	24.3	21.0
Alkaline phosphatase (ALP) (U/L)	84.5	45.8
Total bilirubin (umol/L)	11.2	9.07
Total protein (g/L)	74.4	7.14
<b>Complete blood count</b>		
Hemoglobin (g/dl)	12.5	1.99
Mean corpuscular hemoglobin (MCH) (pg)	29.7	2.95
Mean corpuscular hemoglobin concentration (MCHC) (g/dl)	34.0	0.953
Mean corpuscular volume (MCV) (fL)	87.2	7.42
Hematocrit (L/L)	0.376	0.559
Basophil ( $\times 10^9/L$ )	0.029	0.042
Eosinophil ( $\times 10^9/L$ )	0.225	0.236
Lymphocyte ( $\times 10^9/L$ )	1.87	0.866
Monocyte ( $\times 10^9/L$ )	0.539	0.266
Neutrophil ( $\times 10^9/L$ )	5.46	2.72
Platelet ( $\times 10^9/L$ )	255	83.4

**TABLE 2** (Continued)

	Mean	SD
Red blood cell ( $\times 10^{12}/L$ )	4.25	0.740
White blood cell ( $\times 10^9/L$ )	8.09	2.86

**TABLE 3** Multivariable analysis showing predictors of sudden cardiac death ( $n = 15\,316$ )

Predictor	Hazard ratio (HR)	95% confidence interval (CI)	<i>p</i> value
Age	1.04	[1.02, 1.05]	<.0001
Categorized age	0.977	[0.846, 1.13]	0.747
Male	1.27	[1.15, 1.41]	<.0001
Frequency of baseline acute admissions	1.003	[1.003, 1.003]	<.0001
Number of concomitant DM complications	1.21	[1.15, 1.27]	<.0001
Number of distinct non-DM comorbidities	1.02	[1.01, 1.02]	<.0001
Baseline anemia	0.948	[0.861, 1.04]	0.281
Hypoglycemia frequency	1.03	[1.00, 1.07]	.032
HbA1c			
SD	1.74	[1.45, 2.09]	<.0001
Coefficient of variation	0.953	[0.935, 0.972]	<.0001
Total cholesterol			
SD	0.551	[0.275, 0.951]	.034
Coefficient of variation	1.05	[1.02, 1.08]	.002
HDL cholesterol			
Mean	0.866	[0.609, 1.23]	0.425
SD	0.915	[0.120, 6.99]	0.931
Coefficient of variation	1.00	[0.979, 1.03]	0.769
LDL cholesterol			
SD	1.73	[1.10, 2.74]	.018
Coefficient of variation	0.978	[0.966, 0.991]	.001
Triglyceride			
Mean	1.29	[1.17, 1.41]	<.0001
SD	0.772	[0.656, 0.909]	.002
Coefficient of variation	1.006	[1.00, 1.01]	.022
Antidiabetic agent			
Sulphonylurea	1.39	[1.25, 1.54]	<.0001
Biguanide	0.630	[0.563, 0.704]	<.0001
Thiazolidinedione	0.849	[0.652, 1.11]	0.226
Cardiovascular medications			
ACEI/ARB	1.02	[0.914, 1.14]	0.724
Beta-blocker	1.24	[1.12, 1.38]	<.0001
Calcium channel blocker	1.17	[1.06, 1.30]	.002
Diuretic	1.51	[1.35, 1.67]	<.0001
Lipid-lowering agents	1.02	[0.915, 1.14]	0.697

Note: Values in bold indicate  $P < 0.05$ .

summarized in Tables 1 and 2 respectively. Patients had an average of  $8.67 \pm 7.81$  distinct nondiabetic comorbidities, and  $0.66 \pm 0.90$  diabetic complications. On average, patients had a median of three (interquartile range = 5) episodes of acute hospital admissions between the

years 2004 and 2008. The three commonest diabetic complications were retinopathy/maculopathy (16.5%), nephropathy (14.7%), and hypoglycemia (11.9%), as shown in Table 1. Other pre-existing comorbidities were hypertension (36.6%), IHD (16.7%), stroke (12.1%), HF

**TABLE 4** Multivariable analysis showing predictors of atrial fibrillation ( $n = 13\ 267$ )

Predictor	Hazard ratio (HR)	95% confidence interval (CI)	<i>p</i> value
Age	1.04	[1.03, 1.06]	<b>&lt;.0001</b>
Categorized age	1.09	[0.927, 1.27]	0.307
Male	0.916	[0.816, 1.03]	0.131
Frequency of baseline acute admissions	1.002	[1.002, 1.003]	<b>&lt;.0001</b>
Number of concomitant DM complications	1.03	[0.961, 1.09]	0.437
Number of distinct non-DM comorbidities	0.998	[0.991, 1.01]	0.700
Hypoglycemia frequency	1.05	[1.02, 1.09]	<b>.005</b>
HbA1c			
Mean	1.00	[0.927, 1.08]	0.973
SD	1.31	[0.898, 1.92]	0.161
Coefficient of variation	0.987	[0.954, 1.02]	0.474
Total cholesterol			
Mean	1.10	[0.800, 1.50]	0.565
SD	1.05	[0.522, 2.11]	0.893
Coefficient of variation	0.997	[0.961, 1.03]	0.894
HDL cholesterol			
Mean	0.907	[0.580, 1.42]	0.668
SD	0.296	[0.030, 2.95]	0.299
Coefficient of variation	1.02	[0.993, 1.05]	0.143
LDL cholesterol			
Mean	0.783	[0.566, 1.08]	0.142
SD	1.36	[0.730, 2.55]	0.331
Coefficient of variation	0.992	[0.976, 1.01]	0.340
Triglyceride			
Mean	0.968	[0.860, 1.09]	0.589
Antidiabetic agent			
Sulphonylurea	1.12	[1.00, 1.26]	<b>.043</b>
Biguanide	0.843	[0.746, 0.954]	<b>.007</b>
Cardiovascular medications			
ACEI/ARB	1.21	[1.06, 1.37]	<b>.004</b>
Beta-blocker	1.56	[1.39, 1.75]	<b>&lt;.0001</b>
Calcium channel blocker	1.35	[1.20, 1.51]	<b>&lt;.0001</b>
Diuretic	1.50	[1.34, 1.69]	<b>&lt;.0001</b>
Lipid-lowering agents	1.16	[1.03, 1.32]	<b>.018</b>

Note: Values in bold indicate  $P < 0.05$ .

(10.1%), CKD (9.0%), CLD (5.7%), AMI (5.3%), and COPD (3.4%). The 43.8% patients ( $n = 10\ 223$ , mean daily dose =  $95.0 \pm 300$  mg/day) were on lipid-lowering agents over the course of follow up.

The baseline biochemical characteristics of the present cohort are presented in Table 2. The average frequency of baseline hypoglycemic episodes, between January 1 and December 31 2008, was  $0.50 \pm 1.31$  episodes per year. The baseline hypoglycemia frequency significantly correlated with all HbA1c and lipid variability indices ( $p < .0001$ ). Logistic regression revealed that baseline hypoglycemia frequency was a significant predictor of aborted or actual SCD (OR = 1.09, 95% CI = [1.06, 1.12],  $p < .0001$ ) and incident AF (OR = 1.05, 95% CI = [1.01, 1.08],

$p = .007$ ). In total, 2512 and 1846 patients experienced incident SCD and AF respectively throughout follow-up.

### 3.1 | Predictors of SCD and AF

In the present cohort, 10.3% of patients suffered from at least one SCD event, and 7.7% suffered from AF. Amongst these cases, 25 and 10 cases of patients experiencing aborted or actual SCD and AF were associated with hypoglycemia on admission, respectively. Supplementary Table 2 and 3 present the univariable Cox regression of

predictors for aborted or actual SCD and AF respectively. Supplementary Table 4 presents the univariable Cox regression for ventricular tachycardia alone, with HbA1c and cholesterol variability found to be predictive ( $p < .05$ ).

Table 3 summarizes the results of the multivariable analysis for aborted or actual SCD ( $n = 15\,316$ ), where the following predictors were independent predictors: (1) Demographics: Age (HR = 1.04, 95% CI = [1.02, 1.05],  $p < .0001$ ), male (HR = 1.27, 95% CI = [1.15, 1.41],  $p < .0001$ ); (2) Clinical: Frequency of baseline acute admissions (HR = 1.003, 95% CI = [1.003, 1.003],  $p < .0001$ ), number of concomitant diabetic complications (HR = 1.21, 95% CI = [1.15, 1.27],  $p < .0001$ ), number of discrete nondiabetic comorbidities (HR = 1.02, 95% CI = [1.01, 1.02],  $p < .0001$ ), hypoglycemic frequency (HR = 1.03, 95% CI = [1.00, 1.07],  $p = .032$ ); (3) Glycemic and lipid variability: HbA1c SD (HR = 1.74, 95% CI = [1.45, 2.09],  $p < .0001$ ) and CV (HR = 0.953, 95% CI = [0.935, 0.972],  $p < .0001$ ), total cholesterol CV (HR = 1.05, 95% CI = [1.02, 1.08],  $p = .002$ ), LDL-C SD (HR = 1.73, 95% CI = [1.10, 2.74],  $p = .018$ ), triglyceride mean (HR = 1.29, 95% CI = [1.17, 1.42],  $p < .0001$ ) and CV (HR = 1.01, 95% CI = [1.00, 1.01],  $p = .022$ ); (4) Antidiabetic agent: Sulphonylurea (HR = 1.39, 95% CI = [1.25, 1.54],  $p < .0001$ ), biguanide (HR = 0.630, 95% CI = [0.563, 0.704],  $p < .0001$ ); (5) Cardiovascular medications: Beta-blocker (HR = 1.24, 95% CI = [1.12, 1.38],  $p < .0001$ ), diuretic (HR = 1.51, 95% CI = [1.35, 1.67],  $p < .0001$ ), CV of HbA1c (HR = 0.953, 95% CI = [0.935, 0.972],  $p < .0001$ ) and LDL-C (HR = 0.978, HR = [0.966, 0.991],  $p = .001$ ), in addition to SD of total cholesterol (HR = 0.551, 95% CI = 0.275, 0.951),  $p = .034$ ) and triglyceride (HR = 0.772, 95% CI = [0.656, 0.909],  $p = .002$ ) were predictive of SCD on univariable analysis but became protective after multivariable analysis.

The findings of multivariable regression analysis for incident AF ( $n = 13\,267$ ) are presented in Table 4, where several significant predictors were identified: (1) Demographics: Age (HR = 1.04, 95% CI = [1.03, 1.06],  $p < .0001$ ); (2) Clinical: Frequency of baseline acute admissions (HR = 1.00, 95% CI = [1.00, 1.00],  $p < .0001$ ), hypoglycemic frequency (HR = 1.05, 95% CI = [1.02, 1.09],  $p = .005$ ); (3) Antidiabetic agent: Sulphonylurea (HR = 1.12, 95% CI = [1.00, 1.26],  $p = .043$ ), biguanide (HR = 0.843, 95% CI = [0.746, 0.954],  $p = .007$ ); (4) Cardiovascular medication: ACEI/ARB (HR = 1.21, 95% CI = 1.06, 1.37),  $p = .004$ ), beta-blocker (HR = 1.56, 95% CI = [1.39, 1.75],  $p < .0001$ ), CCB (HR = 1.35, 95% CI = [1.20, 1.51],  $p < .0001$ ), diuretic (HR = 1.50, 95% CI = [1.34, 1.69],  $p < .0001$ ), lipid-lowering agents (HR = 1.16, 95% CI = [1.03, 1.32],  $p = .018$ ).

## 4 | DISCUSSION

The present study demonstrated the following major findings: (1) Clinical and biochemical indices are predictive of arrhythmic occurrence amongst diabetics; (2) Both the mean and variability of HbA1c and lipid indices can predict VT/VF/SCD in diabetic patients; (3) HbA1c variability is associated with hypoglycemia frequency. To the best of our knowledge, the present study is the first to report an association

between increased variability in HbA1c and lipid markers with increased risk for VT/VF/SCD amongst diabetic patients.

The prognostic values of HbA1c and lipid variability have been increasingly explored over the past decades. However, prior studies have mostly focused on the prediction of all-cause mortality or cardiovascular events<sup>12,22</sup> with only a limited number of studies focusing on arrhythmic or SCD outcomes.<sup>23</sup> Although the underlying pathophysiology remains incompletely elucidated, there are several possible contributing factors towards the increased arrhythmic risk amongst patients with high glycemic and lipid variability. First, increased glycemic variability is found to be associated with QTc prolongation and increased QTc dispersion, which greatly elevates the risk of ventricular tachyarrhythmia.<sup>24,25</sup> There is evidence suggesting that QTc prolongation may be triggered by spontaneous hypoglycemia due to underlying coronary atherosclerosis or cardiac autonomic neuropathy.<sup>26-29</sup> Antidiabetic agent use may also play a role in the prognostic value of glycemic variability. Biguanide users are likely more stable or earlier in the disease course, thus have a lower cardiovascular disease burden. Sulphonylurea use, which was predictive of SCD in the present study, is known to have an increased risk of hypoglycemia.<sup>30</sup> In addition, it has been reported human ether-a-go-go-related gene (hERG) channel inhibitory effects of some sulphonylurea, which can lead to QT prolongation.<sup>31</sup> Amongst patients on insulin, who have more labile glucose control, the spontaneous glycemic fluctuations can induce the occurrence of arrhythmia. Unfortunately, continuous blood glucose monitoring was not available in the present study to demonstrate the association between spontaneous glycemic changes and arrhythmic episodes.

Furthermore, structural remodeling as a result of chronic hyperglycemia is also involved in the pathogenesis.<sup>32-37</sup> HbA1c variability has been associated with remodeling and fibrosis of the atria and ventricles, which could be arrhythmogenic.<sup>38-40</sup> In a recent nationwide observational study, an association between high lipid variability and increased risk of new-onset AF was reported, and statins protected against AF development via the reduction in adverse atrial remodeling.<sup>41</sup> Moreover, frequent intermittent hypoglycemia can induce the release of reactive oxygen species,<sup>42</sup> thereby leading to increased oxidative stress, chronic inflammation, and endothelial dysfunction.<sup>43</sup> Hypoglycemia itself is arrhythmogenic and can reduce the myocardial tolerance to ischemia and reperfusion injuries.<sup>44,45</sup>

Similar to glycemic variability, the increase in oxidative stress with fluctuations in lipid levels due to atherogenic substance release from unstable plaque is hypothesized to underlie the increased arrhythmic risk.<sup>12</sup> Indeed, glycemic fluctuations were found to increase the formation of atherosclerotic plaques and thinning the fibrous cap, which suggests that intermittent hypoglycemia may contribute to lipid variability as well.<sup>46</sup> It should be noted that whilst triglyceride and HDL-C variability are dependent on glycemic control and other lifestyle factors, the use of statin plays a significant role in LDL-C variability. The significant interpersonal variability, as well as the varying effects between different types of statins on LDL-C variability, reflects the need for further research on the area.<sup>47,48</sup>

The change in HbA1c and lipid variability from predictive of SCD, in univariable analysis, to being protective under multivariable analysis, can be attributed to several causes. The limitation of cohort size



and multivariate analysis may have selected for patients of more advanced disease and undergone aggressive control. Given that a J-shaped association between adverse outcome and both glycemic and lipid indices have been described, patients with high variability that returned to the optimal glycemic and lipid range would have had a better prognosis.<sup>16,49,50</sup> Indeed, the duration of exposure to an optimal glycemic range is inversely associated with diabetic retinopathy progression, even after accounting for the effects of glycemic variability.<sup>51</sup> Additionally, Ceriello et al. reported that patients with elevations in both HbA1c and HDL-C variability were at higher risk for diabetic nephropathy than those with high variability in only one variable, highlighting the interacting effects between variability markers.<sup>52</sup> Therefore, the protective value may be a result of inevitable selection bias, the protective effects of pharmacotherapy, and the interactions between different indices.<sup>53,54</sup>

#### 4.1 | Strengths and limitations

There are four major strengths for the present study: (1) The independent, and interdependent predictive effects of clinical and biochemical indices towards SCD and AF were assessed by univariable and multivariable analysis; (2) The predictive values of both the value and variability of HbA1c and lipid indices were assessed to examine the effect of biochemical fluctuations on arrhythmic risk in diabetics; (3) The inter-relationship between intermittent hypoglycemia, HbA1c and lipid variability and chronic inflammation was examined to elucidate the underlying pathogenic mechanism; (4) Long follow-up durations permitted the capture of adverse outcomes over a long period.

However, several limitations should be recognized. Firstly, the cohort was limited to type 2 diabetic patients prescribed with insulin, which can limit the generalizability of the findings. Given that insulin is only prescribed for diabetic patients in later stages, an advanced disease state can be inferred for the selected patients. Secondly, the observational nature of the present study leads to inevitable errors from missing data, coding errors, and under-coding. A causal relationship cannot be established from the findings of the observational study, which can only demonstrate associations. Furthermore, unfortunately, ICD coding does not reflect the frequency of events, thus the frequency of SCD events was not evaluated. The coding also does not reflect whether the VT is sustained or associated with hemodynamic collapse. It is based on the assumption that coded VT is clinically significant as nonsustained VT would be clinically irrelevant thus not coded into the database. It should be emphasized that a diagnosis of VT is not the same as SCD, hence the effect of long-term glycemic variability on the risk of SCD should be interpreted with caution. Novel therapies, such as GLP-1 (n = 9) and SGLT-2 transporter inhibitor (n = 0), were not assessed due to the fact that this retrospective study recruited patients in the year 2009, at which these agents were not yet developed. Finally, data on blood pressure, body mass index, echocardiogram, severity of HF and lifestyle were absent, which can affect the patients' cardiovascular health.

## 5 | CONCLUSION

Poor glucose control and variability in lipid parameters in diabetic patients are associated with SCD. These observations suggest the need to re-evaluate the extent of glycemic control required for outcome optimization. Further studies on the predictive value of variability in other glycemic measures, such as fasting and random blood glucose, in addition to other methods of measuring variability, should be performed to further examine the predictiveness of glycemic variability towards arrhythmias in diabetic patients.

#### CONFLICTS OF INTEREST

No conflicts of interest.

#### DATA AVAILABILITY STATEMENT

The deidentified dataset arising from this study is available upon request.

#### ORCID

Gregory Y. H. Lip  <https://orcid.org/0000-0002-7566-1626>

Gary Tse  <https://orcid.org/0000-0001-5510-1253>

#### REFERENCES

1. Priori SG, Blomstrom-Lundqvist C, Mazzanti A, et al. 2015 ESC guidelines for the management of patients with ventricular arrhythmias and the prevention of sudden cardiac death: the task force for the Management of Patients with ventricular arrhythmias and the prevention of sudden cardiac death of the European Society of Cardiology (ESC). Endorsed by: Association for European Paediatric and Congenital Cardiology (AEPC). *Eur Heart J*. 2015;36(41):2793-2867.
2. Chugh SS, Havmoeller R, Narayanan K, et al. Worldwide epidemiology of atrial fibrillation: a global burden of disease 2010 study. *Circulation*. 2014;129(8):837-847.
3. Ball J, Carrington MJ, McMurray JJ, Stewart S. Atrial fibrillation: profile and burden of an evolving epidemic in the 21st century. *Int J Cardiol*. 2013;167(5):1807-1824.
4. Marijon E, Le Heuzey JY, Connolly S, et al. Causes of death and influencing factors in patients with atrial fibrillation: a competing-risk analysis from the randomized evaluation of long-term anticoagulant therapy study. *Circulation*. 2013;128(20):2192-2201.
5. Benjamin EJ, Levy D, Vaziri SM, D'Agostino RB, Belanger AJ, Wolf PA. Independent risk factors for atrial fibrillation in a population-based cohort. The Framingham heart study. *Jama*. 1994; 271(11):840-844.
6. Kuo L, Chao TF, Liu CJ, et al. Usefulness of the CHA2DS2-VASc score to predict the risk of sudden cardiac death and ventricular arrhythmias in patients with atrial fibrillation. *Am J Cardiol*. 2018;122(12): 2049-2054.
7. Chao TF, Liu CJ, Tuan TC, et al. Risk and prediction of sudden cardiac death and ventricular arrhythmias for patients with atrial fibrillation - a Nationwide cohort study. *Sci Rep*. 2017;7:46445.
8. Aune D, Schlesinger S, Norat T, Riboli E. Diabetes mellitus and the risk of sudden cardiac death: a systematic review and meta-analysis of prospective studies. *Nutr Metab Cardiovasc Dis*. 2018;28(6):543-556.
9. Dimova R, Chakarova N, Grozeva G, Kirilov G, Tankova T. The relationship between glucose variability and insulin sensitivity and oxidative stress in subjects with prediabetes. *Diabetes Res Clin Pract*. 2019; 158:107911.

10. Wentholt IM, Kulik W, Michels RP, Hoekstra JB, DeVries JH. Glucose fluctuations and activation of oxidative stress in patients with type 1 diabetes. *Diabetologia*. 2008;51(1):183-190.
11. Navab M, Reddy ST, Van Lenten BJ, Fogelman AM. HDL and cardiovascular disease: atherogenic and atheroprotective mechanisms. *Nat Rev Cardiol*. 2011;8(4):222-232.
12. Bangalore S, Breazna A, DeMicco DA, et al. Visit-to-visit low-density lipoprotein cholesterol variability and risk of cardiovascular outcomes: insights from the TNT trial. *J Am Coll Cardiol*. 2015;65(15):1539-1548.
13. Gu J, Pan JA, Fan YQ, Zhang HL, Zhang JF, Wang CQ. Prognostic impact of HbA1c variability on long-term outcomes in patients with heart failure and type 2 diabetes mellitus. *Cardiovasc Diabetol*. 2018;17(1):96.
14. Lee S, Liu T, Zhou J, Zhang Q, Wong WT, Tse G. Predictions of diabetes complications and mortality using hba1c variability: a 10-year observational cohort study. *Acta Diabetol*. 2021;58(2):171-180.
15. Lee S, Zhou J, Leung KSK, et al. Development of a predictive risk model for all-cause mortality in patients with diabetes in Hong Kong. *BMJ Open Diabetes Res Care*. 2021;9(1):1-12.
16. Forbes A, Murrells T, Mulnier H, Sinclair AJ. Mean HbA1c, HbA1c variability, and mortality in people with diabetes aged 70 years and older: a retrospective cohort study. *Lancet Diabetes Endocrinol*. 2018;6(6):476-486.
17. Tse G, Zhou J, Lee S, et al. Relationship between angiotensin-converting enzyme inhibitors or angiotensin receptor blockers and COVID-19 incidence or severe disease. *J Hypertens*. 2021;39(8):1717-1724.
18. Zhou J, Tse G, Lee S, et al. Interaction effects between angiotensin-converting enzyme inhibitors or angiotensin receptor blockers and steroid or antiviral therapies in COVID-19: a population-based study. *J Med Virol*. 2021;93(5):2635-2641.
19. Pathadka S, Yan VKC, Li X, et al. Hospitalization and mortality in patients with heart failure treated with Sacubitril/valsartan vs. Enalapril: a real-world, population-based study. *Front Cardiovasc Med*. 2020;7:602363.
20. Li CK, Xu Z, Ho J, et al. Association of NPAC score with survival after acute myocardial infarction. *Atherosclerosis*. 2020;301:30-36.
21. Lee S, Zhou J, Wong WT, et al. Glycemic and lipid variability for predicting complications and mortality in diabetes mellitus using machine learning. *BMC Endocr Disord*. 2021;21(1):94.
22. Skriver MV, Sandbaek A, Kristensen JK, Stovring H. Relationship of HbA1c variability, absolute changes in HbA1c, and all-cause mortality in type 2 diabetes: a Danish population-based prospective observational study. *BMJ Open Diabetes Res Care*. 2015;3(1):1-8.
23. Lee S, Zhou J, Guo CL, et al. Predictive scores for identifying patients with type 2 diabetes mellitus at risk of acute myocardial infarction and sudden cardiac death. *Endocrinol Diabetes Metab*. 2021;4(3):e00240.
24. Sertbas Y, Ozdemir A, Sertbas M, Dayan A, Sancak S, Uyan C. The effect of glucose variability on QTc duration and dispersion in patients with type 2 diabetes mellitus. *Pak J Med Sci*. 2017;33(1):22-26.
25. Su JB, Yang XH, Zhang XL, et al. The association of long-term glycaemic variability versus sustained chronic hyperglycaemia with heart rate-corrected QT interval in patients with type 2 diabetes. *PLoS One*. 2017;12(8):e0183055.
26. Murphy NP, Ford-Adams ME, Ong KK, et al. Prolonged cardiac repolarisation during spontaneous nocturnal hypoglycaemia in children and adolescents with type 1 diabetes. *Diabetologia*. 2004;47(11):1940-1947.
27. Takebayashi K, Aso Y, Matsutomo R, Wakabayashi S, Inukai T. Association between the corrected QT intervals and combined intimal-medial thickness of the carotid artery in patients with type 2 diabetes. *Metabolism*. 2004;53(9):1152-1157.
28. Stern K, Cho YH, Benitez-Aguirre P, et al. QT interval, corrected for heart rate, is associated with HbA1c concentration and autonomic function in diabetes. *Diabet Med*. 2016;33(10):1415-1421.
29. Fitzpatrick C, Chatterjee S, Seidu S, et al. Association of hypoglycaemia and risk of cardiac arrhythmia in patients with diabetes mellitus: a systematic review and meta-analysis. *Diabetes Obes Metab*. 2018;20(9):2169-2178.
30. Stahn A, Pistrosch F, Ganz X, et al. Relationship between hypoglycemic episodes and ventricular arrhythmias in patients with type 2 diabetes and cardiovascular diseases: silent hypoglycemia and silent arrhythmias. *Diabetes Care*. 2014;37(2):516-520.
31. Zunkler BJ. Human ether-a-go-go-related (HERG) gene and ATP-sensitive potassium channels as targets for adverse drug effects. *Pharmacol Ther*. 2006;112(1):12-37.
32. Shao Q, Meng L, Lee S, et al. Empagliflozin, a sodium glucose co-transporter-2 inhibitor, alleviates atrial remodeling and improves mitochondrial function in high-fat diet/streptozotocin-induced diabetic rats. *Cardiovasc Diabetol*. 2019;18(1):165.
33. Grisanti LA. Diabetes and arrhythmias: pathophysiology, mechanisms and therapeutic outcomes. *Front Physiol*. 2018;9:1669.
34. Tadic M, Cuspodi C. The influence of type 2 diabetes on left atrial remodeling. *Clin Cardiol*. 2015;38(1):48-55.
35. Gong M, Yuan M, Meng L, et al. Wenxin Keli regulates mitochondrial oxidative stress and homeostasis and improves atrial remodeling in diabetic rats. *Oxid Med Cell Longev*. 2020;2020:2468031.
36. Liu C, Liu R, Fu H, et al. Pioglitazone attenuates atrial remodeling and vulnerability to atrial fibrillation in alloxan-induced diabetic rabbits. *Cardiovasc Ther*. 2017;35(5):1-9.
37. Wang H, Xu Y, Xu A, et al. PKC $\beta$ /NF- $\kappa$ B pathway in diabetic atrial remodeling. *J Physiol Biochem*. 2020;76(4):637-653.
38. Saito S, Teshima Y, Fukui A, et al. Glucose fluctuations increase the incidence of atrial fibrillation in diabetic rats. *Cardiovasc Res*. 2014;104(1):5-14.
39. Li S, Zheng Z, Tang X, et al. Impact of HbA1c variability on subclinical left ventricular remodeling and dysfunction in patients with type 2 diabetes mellitus. *Clin Chim Acta*. 2020;502:159-166.
40. Tse G, Lai ET, Tse V, Yeo JM. Molecular and electrophysiological mechanisms underlying cardiac Arrhythmogenesis in diabetes mellitus. *J Diabetes Res*. 2016;2016:2848759.
41. Lee HJ, Lee SR, Choi EK, Han KD, Oh S. Low lipid levels and high variability are associated with the risk of new-onset atrial fibrillation. *J Am Heart Assoc*. 2019;8(23):e012771.
42. Tse G, Yan BP, Chan YW, Tian XY, Huang Y. Reactive oxygen species, endoplasmic reticulum stress and mitochondrial dysfunction: the link with cardiac Arrhythmogenesis. *Front Physiol*. 2016;7:313.
43. Costantino S, Paneni F, Battista R, et al. Impact of glycemic variability on chromatin remodeling, oxidative stress, and endothelial dysfunction in patients with type 2 diabetes and with target HbA1c levels. *Diabetes*. 2017;66(9):2472-2482.
44. Paelestik KB, Jespersen NR, Jensen RV, Johnsen J, Botker HE, Kristiansen SB. Effects of hypoglycemia on myocardial susceptibility to ischemia-reperfusion injury and preconditioning in hearts from rats with and without type 2 diabetes. *Cardiovasc Diabetol*. 2017;16(1):148.
45. Yun JS, Park YM, Han K, Cha SA, Ahn YB, Ko SH. Severe hypoglycemia and the risk of cardiovascular disease and mortality in type 2 diabetes: a nationwide population-based cohort study. *Cardiovasc Diabetol*. 2019;18(1):103.
46. Kuroda M, Shinke T, Sakaguchi K, et al. Association between daily glucose fluctuation and coronary plaque properties in patients receiving adequate lipid-lowering therapy assessed by continuous glucose monitoring and optical coherence tomography. *Cardiovasc Diabetol*. 2015;14:78.
47. Sathyapalan T, Atkin SL, Kilpatrick ES. LDL cholesterol variability in patients with type 2 diabetes taking atorvastatin and simvastatin: a comparison of two formulae for LDL-C estimation. *Ann Clin Biochem*. 2015;52(Pt 1):180-182.

48. Qamar A, Giugliano RP, Keech AC, et al. Interindividual variation in low-density lipoprotein cholesterol level reduction with Evolocumab: an analysis of FOURIER trial data. *JAMA Cardiol.* 2019;4(1):59-63.
49. Liu L, Shen G, Huang JY, et al. U-shaped association between low-density lipid cholesterol and diabetes mellitus in patients with hypertension. *Lipids Health Dis.* 2019;18(1):163.
50. Tanamas SK, Saulnier PJ, Hanson RL, et al. Serum lipids and mortality in an American Indian population: a longitudinal study. *J Diabetes Complications.* 2018;32(1):18-26.
51. Lu J, Ma X, Zhou J, et al. Association of Time in range, as assessed by continuous glucose monitoring, with diabetic retinopathy in type 2 diabetes. *Diabetes Care.* 2018;41(11):2370-2376.
52. Ceriello A, De Cosmo S, Rossi MC, et al. Variability in HbA1c, blood pressure, lipid parameters and serum uric acid, and risk of development of chronic kidney disease in type 2 diabetes. *Diabetes Obes Metab.* 2017;19(11):1570-1578.
53. Adhyaru BB, Jacobson TA. Safety and efficacy of statin therapy. *Nat Rev Cardiol.* 2018;15(12):757-769.
54. Chang SH, Wu LS, Chiou MJ, et al. Association of metformin with lower atrial fibrillation risk among patients with type 2 diabetes mellitus: a population-based dynamic cohort and in vitro studies. *Cardiovasc Diabetol.* 2014;13:123.

#### SUPPORTING INFORMATION

Additional supporting information may be found in the online version of the article at the publisher's website.

**How to cite this article:** Lee S, Jeevaratnam K, Liu T, et al. Risk stratification of cardiac arrhythmias and sudden cardiac death in type 2 diabetes mellitus patients receiving insulin therapy: A population-based cohort study. *Clin Cardiol.* 2021;44(11):1602-1612. doi:10.1002/clc.23728