

Relationship of National Institutes of Health Stroke Scale to 30-Day Mortality in Medicare Beneficiaries With Acute Ischemic Stroke

Gregg C. Fonarow, MD; Jeffrey L. Saver, MD; Eric E. Smith, MD, MPH; Joseph P. Broderick, MD; Dawn O. Kleindorfer, MD; Ralph L. Sacco, MD; Wenqin Pan, PhD; DaiWai M. Olson, PhD; Adrian F. Hernandez, MD, MHS; Eric D. Peterson, MD, MPH; Lee H. Schwamm, MD

Background—The National Institutes of Health Stroke Scale (NIHSS), a well-validated tool for assessing initial stroke severity, has previously been shown to be associated with mortality in acute ischemic stroke. However, the relationship, optimal categorization, and risk discrimination with the NIHSS for predicting 30-day mortality among Medicare beneficiaries with acute ischemic stroke has not been well studied.

Methods and Results—We analyzed data from 33 102 fee-for-service Medicare beneficiaries treated at 404 Get With The Guidelines-Stroke hospitals between April 2003 and December 2006 with NIHSS documented. The 30-day mortality rate by NIHSS as a continuous variable and by risk-tree determined or prespecified categories were analyzed, with discrimination of risk quantified by the *c*-statistic. In this cohort, mean age was 79.0 years and 58% were female. The median NIHSS score was 5 (25th to 75th percentile 2 to 12). There were 4496 deaths in the first 30 days (13.6%). There was a strong graded relation between increasing NIHSS score and higher 30-day mortality. The 30-day mortality rates for acute ischemic stroke by NIHSS categories were as follows: 0 to 7, 4.2%; 8 to 13, 13.9%; 14 to 21, 31.6%; 22 to 42, 53.5%. A model with NIHSS alone provided excellent discrimination whether included as a continuous variable (*c*-statistic 0.82 [0.81 to 0.83]), 4 categories (*c*-statistic 0.80 [0.79 to 0.80]), or 3 categories (*c*-statistic 0.79 [0.78 to 0.79]).

Conclusions—The NIHSS provides substantial prognostic information regarding 30-day mortality risk in Medicare beneficiaries with acute ischemic stroke. This index of stroke severity is a very strong discriminator of mortality risk, even in the absence of other clinical information, whether used as a continuous or categorical risk determinant. (*J Am Heart Assoc* 2012;1:42-50.)

Key Words: ischemic stroke • National Institutes of Health Stroke Scale • mortality • registries

Stroke is among the leading causes of death, disability, hospitalizations, and healthcare expenditures in the United States.¹ National quality profiling efforts have recently begun to report hospital-level performance for Medicare beneficiaries, including 30-day mortality rates, for common medical conditions including heart failure, acute myocardial infarction, and community-acquired pneumonia.²⁻⁵ There is growing interest in also reporting outcomes for Medicare beneficiaries hospitalized with acute ischemic stroke.⁶ Risk adjust-

ment is critical for accurately assessing and reporting clinical outcomes.²⁻⁴ Stroke severity on admission is a powerful determinant of functional outcomes in acute ischemic stroke.⁷⁻⁹

Editorial on p 6

The National Institutes of Health Stroke Scale (NIHSS), which is a validated tool for assessing the initial stroke severity, has been shown to predict mortality in acute ischemic stroke in several prior studies.⁹⁻¹⁴ However, these studies have generally been confined to small numbers of patients from single centers, select patients enrolled in randomized clinical trials, studies outside the United States, or limited to evaluating in-hospital mortality. The relation of admission NIHSS to 30-day mortality and its capability to discriminate risk in Medicare beneficiaries with acute ischemic stroke have not been well studied. Using data from ischemic stroke admissions in the Get With The Guidelines-Stroke (GWTG-Stroke) Program linked to Medicare data, the objectives of this study were to (1) quantify the relation and risk discrimination of admission NIHSS to 30-day mortality rates among Medicare beneficiaries hospitalized with acute ischemic stroke and (2) identify categories of NIHSS that provide optimal discrimination of 30-day mortality risk.

From the Division of Cardiology, University of California, Los Angeles, CA (G.C.F.); Department of Neurology, University of California, Los Angeles (J.L.S.); Department of Clinical Neurosciences, University of Calgary, Alberta, Canada (E.E.S.); Department of Neurology, University of Cincinnati Academic Health Center, OH (J.P.B., D.O.K.); Miller School of Medicine, University of Miami, FL (R.L.S.); Duke Clinical Research Center, Durham, NC (W.P., D.M.O., A.F.H., E.D.P.); Division of Neurology, Massachusetts General Hospital, Boston (L.H.S.).

Correspondence to: Gregg C. Fonarow, MD, Ahmanson-UCLA Cardiomyopathy Center, Ronald Reagan UCLA Medical Center, 10833 LeConte Avenue, Room 47-123 CHS, Los Angeles, CA 90095. E-mail: gfonarow@mednet.ucla.edu

Received November 20, 2011; accepted December 23, 2011.

© 2012. The Authors. Published on behalf of the American Heart Association, Inc., by Wiley-Blackwell. This is an Open Access article under the terms of the Creative Commons Attribution Noncommercial License, which permits use, distribution, and reproduction in any medium, provided the original work is properly cited and is not used for commercial purposes.

Methods

Data Sources

Data from the GWTG-Stroke registry was linked with enrollment files and inpatient claims from the Centers for Medicare & Medicaid Services (CMS) for the period April 1, 2003, through December 31, 2006. Follow-up continued through 2007. The design, inclusion criteria, and data collection methods for GWTG-Stroke have been described previously.^{15,16} Patients were eligible for inclusion in the GWTG-Stroke registry if they were admitted for acute stroke. Trained hospital personnel ascertained acute ischemic stroke admissions by either prospective clinical identification, retrospective identification using *International Classification of Diseases (ICD)-9* discharge codes, or a combination. Patient data abstracted by trained hospital personnel included demographics, medical history, brain imaging, in-hospital treatment and events, discharge treatment and counseling, mortality, and discharge destination. All patient data were de-identified before submission. All states and regions of the United States were represented and a variety of centers participated, from community hospitals to large tertiary centers. Data on hospital-level characteristics (ie, bed size, academic or nonacademic status, and geographic region) were obtained from the American Hospital Association.¹⁷ All participating institutions were required to comply with local regulatory and privacy guidelines and, if applicable, to obtain institutional review board approval. Outcome Sciences, Inc (Cambridge, MA) served as the registry-coordinating center. The Duke Clinical Research Institute (Durham, NC) served as the data analysis center.

The CMS files (100% Medicare research identifiable files) included data for all fee-for-service Medicare beneficiaries aged ≥ 65 years who were hospitalized with a diagnosis of acute stroke (*ICD-9- 430.x, 431.x, 433.x, 434.x, and 436.x*). We merged patient data in the GWTG registry with Medicare Part A inpatient claims, matching by admission and discharge dates, hospital, date of birth, and sex using methods previously described.^{16,18} From 222 278 hospitalizations of patients aged 65 years or older in GWTG-Stroke, we matched 157 039 patients (69%) to fee-for-service Medicare claims from 850 hospitals. Patients in Medicare-managed care plans (15% to 25% of the population depending on the region of the country) or other types of insurance are not included in fee-for-service Medicare claims files and therefore cannot be matched.^{16,18} The study population was further confined to patients with acute ischemic stroke (N=101 801), first index stroke admission April 2003 or later, and the first index admission (N=94 421). Hospitals and patients from centers with < 25 ischemic stroke patients entered during the study period were excluded to minimize the likelihood of sampling error. This resulted in a study

population of 91 134 acute ischemic stroke patients from 625 GWTG-Stroke hospitals.

The NIHSS score was documented in 33 770 of these patients (37.1%) from 560 hospitals. For additional stability at the hospital level, we further confined the analysis to hospitals with at least 10 patients with NIHSS documented during the study period. This resulted in a final study population of 33 102 patients from 404 participating hospitals. The demographics, clinical characteristics, and geographic distribution of matched and unmatched acute ischemic stroke cases were similar, except fewer patients were enrolled in GWTG-Stroke from the Midwest compared with unmatched ischemic stroke cases. The demographics, clinical characteristics, and geographic distribution of patients with and without NIHSS recorded were similar. The 30-day mortality was modestly lower in the 33 102 patients with NIHSS recorded (13.6%) compared with the 57 364 patients without NIHSS recorded (14.6%), $P < 0.0001$.

National Institutes of Health Stroke Scale

The NIHSS is a 15-item neurologic examination stroke scale used to evaluate the effect of acute ischemic stroke on the levels of consciousness, language, neglect, visual-field loss, extraocular movement, motor strength, ataxia, dysarthria, and sensory loss that provides a quantitative measure of stroke-related neurologic deficit.⁷ The scale is designed to be a simple, valid, and reliable tool that can be administered at the bedside consistently by physicians, nurses, or therapists. A trained observer rates the patient's ability to answer questions and perform activities. Ratings for each item are scored with 3 to 5 grades with 0 as normal. The NIHSS can be viewed online at http://www.ninds.nih.gov/doctors/NIH_Stroke_Scale.pdf.

The first recorded NIHSS score, as close to admission as possible, was collected when available. Stroke team members were highly encouraged, but not required, to complete training and certification in the NIHSS. There were 2 patients (0.006%) with NIHSS score recorded with a value > 42 who were not included in the analyses. There were also a few patients with improbable NIHSS scores of 41 (N=14) (0.04%) and 42 (N=16) (0.05%). Although NIHSS scores of 41 and 42 should be unobtainable among patients who are alive and most likely reflect slight scale errors in patients with severe stroke severity, these NIHSS scores were analyzed as recorded.

Outcome

The outcome of interest was all-cause mortality within 30 days from time of admission. As with other studies of Medicare beneficiaries, we obtained, with complete ascertainment, deaths and dates of death from the CMS vital status files.^{16,18}

Statistical Analysis

We summarized baseline characteristics by whether the patient was alive or dead at 30 days using percentages for categorical variables and means and SDs for continuous variables. For comparisons by group, we used chi-square tests for categorical variables and Wilcoxon tests for continuous variables. Frequency histograms were used to describe the distribution of NIHSS scores. NIHSS was analyzed as a continuous variable as well as in categorical groups. We used classification and regression tree methodology¹⁹ to determine the optimal cut points for 30-day mortality by categorical grouping of NIHSS ranging from 2 to 6 groups. We also analyzed a 3-category grouping of the NIHSS found in a prior study to discriminate 6-month dependency outcomes.⁸ Discrimination by NIHSS as a continuous variable and by categorical groups was assessed by determining Wald chi square and the *c* statistic. A *c* statistic of 1.0 indicates perfect prediction whereas a *c* statistic of 0.50 indicates prediction no better than chance alone. The observed versus predicted mortality by NIHSS as a continuous variable for 10 deciles of expected risk was plotted. Discrimination by NIHSS as a continuous variable was also examined among several clinically relevant subgroups. A previously derived and validated GWTG-Stroke clinical risk prediction model for acute ischemic stroke was used to evaluate the discrimination of a clinical model without and with NIHSS added.¹⁶ This model included patient characteristics (age, sex, race/ethnicity, medical history of previous stroke or transient ischemic attack, coronary heart disease [CAD], myocardial infarction, carotid stenosis, chronic obstructive pulmonary disease, dementia, diabetes, peripheral vascular disease, pneumonia, renal dysfunction, and hypertension), on-hour arrival time to hospital (Monday through Friday 7 AM to 5 PM, yes/no), and Emergency Medical Service transport. SAS software version 9.2 (SAS Institute Inc, Cary, NC) was used for all analyses.

Results

There were 33 102 acute ischemic stroke patients with NIHSS documented in the study cohort. The patient characteristics are shown in Table 1. The median age was 79 years, 56.5% were women, and 83.3% were white. Prior stroke or transient ischemic attack was present in 30.0% of patients. Comorbidities were common with hypertension in 77.5%, diabetes in 26.7%, coronary heart disease in 32.4%, and history of atrial fibrillation or flutter in 24.5%. The NIHSS median score in this population was 5 (25th to 75th percentile 2 to 12). The distribution of NIHSS scores in this patient population are shown in Figure 1. Close to two thirds of patients were reported to have an admission NIHSS score of ≤ 8 . Of the 404 GWTG-Stroke hospitals included in this study, median bed size was 409, all regions of the United States were represented, and nonacademic hospitals accounted for 36.8% of admissions (Table 1).

There were 4496 deaths within the first 30 days (13.6%). There were 2037 deaths that occurred during the index hospitalization (in-hospital mortality 6.4%). The patient and hospital characteristics of those patients who died in the first 30 days compared with those who were alive are shown in Table 1. Patients who died within 30 days from admission were older, female, more likely to be white, had a higher frequency of atrial fibrillation, and prior history of coronary artery disease (CAD). Patients who died were more likely to have arrived by emergency medical services (EMS). The median NIHSS was substantially higher among patients who died compared with those who were alive at 30 days (17 versus 4, $P < 0.0001$). There were no significant differences in hospital characteristics between patients who were alive or dead in the first 30 days.

The relation between each score on the NIHSS and 30-day mortality is shown in Figure 2. There was a graded near-linear relationship between increases in the NIHSS and 30-day mortality. The 30-day mortality rate was 2.3% for patients with a score of 0 and was $>75\%$ for patients with a score of ≥ 40 . As a continuous variable, NIHSS provided excellent discrimination of 30-day mortality with a *c*-statistic 0.82, (95% confidence interval [CI], 0.81–0.83). A calibration plot of observed and expected 30-day mortality with NIHSS as a continuous variable is shown in Figure 3. Categorizations of NIHSS by risk-tree methodology with optimal cut points for 30-day mortality for different group sizes are shown in Table 2. There was slightly less discrimination with these categorical grouping with 4 or more groups compared with NIHSS as a continuous variable, with the risk-tree methodology selecting a categorization with 4 groups and cut points of 0 to 7, 8 to 13, 14 to 21, and 22 to 42. This allows identification on admission of acute ischemic stroke patients at low ($<10\%$), medium (10% to 20%), high (20% to 40%), and very high ($>40\%$) 30-day mortality risk as shown in Figure 2 and Table 3. The *c*-statistic with this 4-group categorical approach to NIHSS was 0.80 (95% CI, 0.79–0.80). The 30-day mortality rates for these 4 NIHSS categories 0 to 7, 8 to 13, 14 to 21, and 22 to 42 were 4.2%, 13.9%, 31.6%, and 53.5%, respectively (Table 3). Although patients with an NIHSS score of 22 to 42 constitute only 8.2% of the cohort with acute ischemic stroke, these patients account for close to one third of all deaths. Alternative 3 group categories for NIHSS are shown in Table 3. A categorization of patients with mild 0 to 5, moderate 6 to 13, and severe 14 to 42 stroke severity by NIHSS produced groups with 30-day mortality rates of 3.6%, 11.6%, and 39.9% and a *c*-statistic of 0.79 (95% CI, 0.78–0.80).

NIHSS provided excellent discrimination of 30-day mortality for patients 65 to 79 years of age and those 80 or older, men and women, and patients with and without prior stroke or transient ischemic attack (Table 4). The clinical risk model for Medicare beneficiaries based on demographics and clinical variables without NIHSS had more modest discrimination

Table 1. Patient and Hospital Characteristics of Medicare Beneficiaries in GTWG-Stroke Hospitals With Acute Ischemic Stroke Overall and by Alive or Dead at 30 Days

Variable	Overall Cohort (N=33 102)	No Death Within 30 Days (N=28 606)	Death Within 30 Days (N=4496)	P Value*
Age, y, median	79	79	83	<0.0001
25th–75th	73–85	72–84	78–88	
Sex, male, %	43.6	44.3	38.9	<0.0001
Race/ethnicity, %				<0.0001
Hispanic	2.5	2.6	1.9	
Black	8.7	9.1	5.8	
White	83.3	82.7	87.1	
Arrival mode, %				<0.0001
Emergency medical services	67.6	63.9	91.4	
Private transport	32.4	36.1	8.6	
Arrival time, off hours, %	53.4	53.3	54.3	0.1930
Atrial fibrillation/flutter, %	24.5	22.0	40.9	<0.0001
Previous stroke/TIA, %	30.0	29.8	31.6	0.0156
CAD/prior MI, %	32.4	31.6	37.8	<0.0001
Diabetes mellitus, %	26.7	26.8	25.7	0.1267
Peripheral vascular disease, %	5.5	5.3	6.7	0.0003
Hypertension, %	77.5	77.7	76.3	0.0293
Smoker, %	11.3	11.8	8.4	<0.0001
Dyslipidemia, %	36.4	37.9	26.8	<0.0001
Body mass index, kg/m ²	25.8	26.0	24.4	<0.0001
25th–75th	22.8–30.0	23.0–29.8	21.5–28.0	
NIHSS total score mean, (SD)	8.01 (7.88)	6.62 (6.67)	16.85 (9.18)	<0.0001
Median	5	4	17	
25th–75th	2–12	2–9	10–23	
Discharge status, %				
Home	36.6	41.9	2.9	<0.0001
Skilled nursing facility	24.0	24.5	20.4	
Rehabilitation, %	26.7	30.2	4.7	
Transfer to acute care facility	2.3	2.5	1.4	
Left against medical advice	0.2	0.2	0.2	
Hospice	3.8	0.6	24.7	
Died inhospital	6.4	-	45.8	
Ambulatory status [†]				<0.0001
Ambulate independently	39.1	44.4	3.7	
With assistance	34.3	37.8	10.1	
Unable to ambulate	24.2	15.9	79.4	
Hospital characteristic				
No. of stroke discharges, %				0.8495
0–100	9.9	9.9	9.7	
101–300	57.4	57.4	57.3	
>300	32.7	32.7	33.0	

Continued

Table 1. Continued

Variable	Overall Cohort (N=33 102)	No Death Within 30 Days (N=28 606)	Death Within 30 Days (N=4496)	P Value*
No. of beds, median	409	409	414	0.6929
25th–75th	279–580	279–580	279–580	
Geographic region, %				0.9551
Northeast	25.8	25.7	26.0	
Midwest	22.4	22.4	22.3	
South	36.4	36.4	36.1	
West	15.5	15.5	15.6	
Hospital type, %				0.7908
Academic	63.2	63.2	63.4	
Nonacademic	36.8	36.9	36.6	
Missing	0.04	0.04	0.02	
TJC primary stroke center, %	74.7	74.7	74.8	0.8329

GWTG indicates Get With The Guidelines; TIA, transient ischemic attack; CAD/prior MI, coronary artery disease or myocardial infarction; NIHSS, National Institutes of Health Stroke Scale; SD, standard deviation; TJC, The Joint Commission.

*Wilcoxon 2-sample test for continuous variables and chi-square test for categorical variables.

†Excludes patients who transferred out.

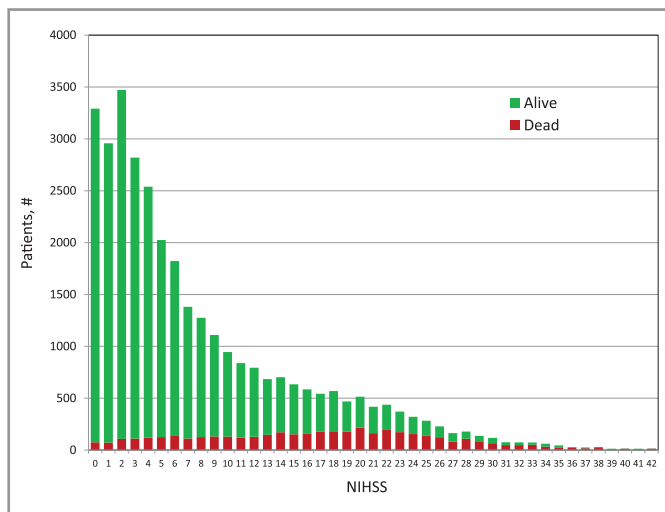


Figure 1. Distribution of NIHSS scores among Medicare beneficiaries in GTWG-Stroke hospitals with acute ischemic stroke patients alive at 30 days are shown in green and patients dead by 30 days shown in red. NIHSS indicates National Institutes of Health Stroke Scale; GWTG, Get With The Guidelines.

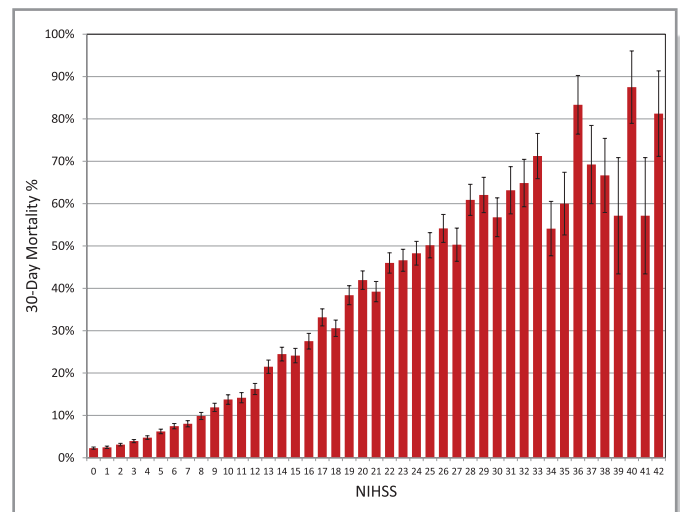


Figure 2. Acute ischemic stroke 30-day mortality rates by NIHSS. Standard error bars are displayed. NIHSS indicates National Institutes of Health Stroke Scale.

(*c*-statistic 0.71 [95% CI, 0.70–0.72]) and was substantially outperformed by NIHSS alone (*c*-statistic 0.82 [95% CI, 0.81–.83]). Adding the demographic and clinical variables from the clinical risk model to NIHSS produced only small improvement in discrimination beyond that obtained with NIHSS alone (*c*-statistic 0.84 [95% CI, 0.84–0.85], difference 0.02, 95% CI, 0.02–0.03, *P*<0.0001).

Discussion

In assessing the relation of the NIHSS to 30-day mortality after acute ischemic stroke among GWTG-Stroke Medicare beneficiaries, this study finds that NIHSS is a very strong discriminator of mortality risk. There is a graded near-linear relationship between first recorded NIHSS and higher 30-day mortality risk. This study also demonstrates that with categorization of NIHSS into 3 or 4 groups, acute ischemic stroke patients can be readily identified as being at low, medium, or high risk for 30-day mortality, even in the absence of any other demographic or

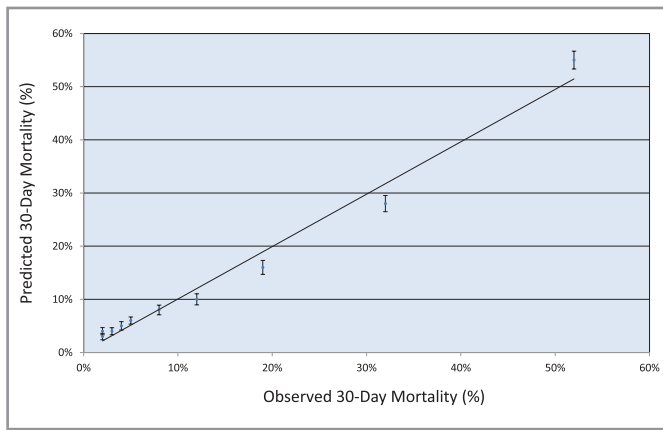


Figure 3. Calibration plot of observed and predicted 30-day mortality by NIHSS as a continuous variable.

clinical variables. NIHSS provided excellent discrimination of 30-day mortality among multiple clinically relevant subgroups. NIHSS as a continuous variable or in categories resulted in far better discrimination of 30-day mortality risk than a clinical model not including stroke severity. These findings highlight the importance of a valid specific measure of stroke severity as a determinate of mortality after acute ischemic stroke for Medicare beneficiaries. Further, this study suggests that it may be vital for optimal discrimination to include stroke severity for risk stratification and risk adjustment in acute ischemic stroke.

The NIHSS was developed and subsequently validated as a tool for assessing the initial stroke severity.^{20,21} It has subsequently been shown to be predictive of a variety of stroke functional outcomes.⁷⁻¹⁰ Stroke severity as indexed by NIHSS has also been shown to be predictive of mortality after acute ischemic stroke.⁹⁻¹⁴ One study of 360 ischemic stroke patients admitted to a single hospital in Taiwan identified admission stroke severity as measured by NIHSS score as the strongest predictor of 3-month mortality, with an odds ratio of 1.17 (95% CI, 1.12-1.22) per point.¹² Another study analyzed 479 patients admitted to a single center in Switzerland, advanced age, and high NIHSS were the only independent predictor of 30-day mortality.¹¹ A study from 7 centers in Germany found NIHSS obtained within the first 6 hours of admission to be highly predictive of 100-day survival (*c*-statistic 0.86).¹³ A prior study for GWTG-Stroke showed that NIHSS was the strongest predictive variable for in-hospital mortality and substantially improved the performance of a model based on clinical variables without stroke severity (*c*-statistic improved from 0.72 to 0.85).¹⁴ However, these studies were either small, drawn from select patients enrolled in clinical trials, conducted in a small number of centers outside the United States, or were confined to in-hospital mortality. The findings from the present study, drawn from hundreds of hospitals from all regions of the United States and tens of thousands of patients, substantially

extend these prior findings with follow-up to a standard 30-day outcome, and may be viewed as having greater external validity.

In the present study, a model with NIHSS alone without other variables had a *c*-statistic of 0.82, a range where clinical risk models are regarded to have genuine clinical utility for individual decision making.²² This illustrates the very strong relation between stroke severity and 30-day mortality. The mortality risk discrimination capability of NIHSS, either in a continuous or categorical variable, among Medicare beneficiaries with acute ischemic stroke compares very favorably to other mortality prediction models incorporating the NIHSS or other clinical measures of stroke severity (previously reported *c*-statistics 0.79 to 0.86) and appear superior to models with demographic/clinical variables without severity (previously reported *c*-statistics 0.69 to 0.75).^{13,14,16,23} Measures of stroke severity appear to be vital for optimal discrimination of mortality risk.

NIHSS was recorded in 37% of hospitalized acute ischemic stroke patients during the time frame of this study. The time and expertise needed to perform even a short standardized stroke severity assessment is an important barrier that will need to be further overcome. Recent data suggest that the NIHSS is being documented more frequently. In the first 2 quarters of 2011 in GWTG-Stroke, NIHSS was recorded in 61.1% of acute ischemic stroke patients (data on file, Duke Clinical Research Institute (DCRI)). Further study will be needed to determine the best methods for ensuring high rates of use of the NIHSS in routine clinical practice or whether other simpler measures of stroke severity could be developed and substituted without substantial loss of prognostic information.

Limitations

There are several limitations in this study to consider. This study includes only patients in fee-for-service Medicare and thus does not include patients who were enrolled in managed care, the uninsured, and patients younger than 65 years of age. The relationship between NIHSS and 30-day mortality may differ among younger patients and those with different type of insurance. However, it is Medicare beneficiaries with acute ischemic stroke for whom 30-day mortality rates that are being considered for public reporting by CMS. The hospitals studied are those participating in GWTG-Stroke and may not be representative of all hospitals caring for patients with acute ischemic stroke. Although hospital characteristics for GWTG-Stroke differ from the nation, the demographics and clinical characteristics of Medicare beneficiaries in GWTG-Stroke have been demonstrated to be very similar to the overall Medicare acute ischemic stroke patient population.²⁴ The analysis includes only patients with NIHSS documented, which may introduce selection bias, although differences in patient characteristic

Table 2. Categorical Groupings of NIHSS to Best Discriminate 30-Day Mortality Risk

No. of Groupings	Risk-Tree Cut Points for the Groupings	Chi-Square for 30-Day Mortality	c-Statistic (95% Confidence Intervals)
2	0–13, 14–42	5378	0.74 (0.74–0.75)
3	0–13, 14–21, 22–42	6069	0.75 (0.75–0.76)
4	0–7, 8–13, 14–21, 22–42	6418	0.80 (0.79–0.80)
5	0–7, 8–13, 14–18, 19–21, 22–42	6541	0.80 (0.79–0.81)
6	0–7, 8–13, 14–18, 19–21, 22–27, 28–42	6651	0.80 (0.79–0.81)
Original (NIHSS as continuous variable)	0, 1, 2, 3, 4, . . . , 42	6856	0.82 (0.81–0.83)

NIHSS indicates National Institutes of Health Stroke Scale. Classification and regression tree methodology (in R) with predetermined No. of nodes were applied to identify the categories of NIHSS. Larger chi-square statistic and c-statistic closer to 1.0 indicates more optimal discrimination of risk.

and 30-day mortality of patients with or without NIHSS documented are small. Further the demographics, characteristics, and 30-day mortality rates of patients with NIHSS in this study were similar to the overall Medicare acute ischemic stroke population, suggesting these findings may have external validity.²⁴ Study data were collected on the basis of the medical record and depend on the accuracy and completeness of clinical documentation and chart abstraction. The NIHSS was analyzed as assessed and documented in clinical practice, the precise timing of NIHSS assessment was not collected, and the intra- and interobserver reliability at participating hospitals was not evaluated. Participating hospitals were encouraged to assess NIHSS prospectively. However, it is possible that, for some patients, NIHSS was determined retrospectively on the basis of the documented neurological examination; though this approach has been shown to produce reliable and valid results.²⁵

Any imprecision and lack of uniformity in scoring would be expected to diminish, not enhance, the prognostic value of NIHSS. We did not evaluate other metrics of stroke severity. We also did not assess other important outcomes that may be predicted by NIHSS including health-related quality of life, disability, patient satisfaction, rehospitalization, or other clinical outcomes that may be of interest at 30 days or at longer time intervals after stroke.

In summary, the NIHSS provides substantial prognostic information regarding mortality within the first 30 days among Medicare beneficiaries with acute ischemic stroke. This index of stroke severity is a very strong discriminator of mortality risk whether evaluated as a continuous or categorical risk determinant. With categorization of NIHSS into 3 or 4 groups, Medicare beneficiaries with acute ischemic stroke can be readily identified as being at low, medium, and high risk for 30-day

Table 3. Relation of NIHSS Categories to 30-Day Mortality in Acute Ischemic Stroke

NIHSS Categories	30-Day Mortality	Portion of Patients	Portion of Deaths
0–7	4.2% (4.0%–4.5%)	61.3%	19.2%
8–13	13.9% (13.0%–14.8%)	17.1%	17.4%
14–21	31.6% (30.2%–32.9%)	13.4%	31.1%
22–42	53.5% (51.7%–55.4%)	8.2%	32.3%
<i>c</i> -statistic 0.80 (0.79–0.80)			
0–7	4.2% (4.0%–4.5%)	61.3%	19.2%
8–13	13.9% (13.0%–14.8%)	17.1%	17.4%
14–42	39.9% (38.8%–41.0%)	21.6%	63.4%
<i>c</i> -statistic 0.79 (0.78–0.79)			
0–5*	3.6% (3.3%–3.9%)	51.7%	13.7%
6–13*	11.6% (11.0%–12.3%)	26.7%	22.9%
14–42*	39.9% (38.8%–41.0%)	21.6%	63.4%
<i>c</i> -statistic 0.79 (0.78–0.80)			

NIHSS indicates National Institutes of Health Stroke Scale. *This categorization derived from reference 8. The 95% confidence intervals are shown in parentheses.

Table 4. NIHSS Discrimination of 30-Day Mortality Risk in Clinically Relevant Subgroups

Patient Subgroups	Chi-Square for 30-Day Mortality	c-Statistic (95% Confidence Intervals)
Age <80 y (N=17 020)	2539.4	0.82 (0.81–0.83)
Age ≥ 80 y (N=16 080)	3558.7	0.81 (0.80–0.82)
Men (N=14 417)	2588.1	0.81 (0.79–0.82)
Women (N=18 683)	3913.6	0.83 (0.82–0.83)
Prior stroke/TIA (N=9886)	1820.2	0.81 (0.79–0.82)
No prior stroke/TIA (N=23 047)	4720.0	0.82 (0.82–0.83)

NIHSS indicates National Institutes of Health Stroke Scale; TIA, transient ischemic attack.

NIHSS analyzed as a continuous variable.

mortality. These findings suggest that it may be critical to collect and include stroke severity for optimal risk stratification and risk adjustment of 30-day mortality for Medicare beneficiaries with acute ischemic stroke.

Sources of Funding

The Get With The Guidelines[®]-Stroke (GWTG-Stroke) program is provided by the American Heart Association/American Stroke Association. The GWTG-Stroke program is currently supported in part by a charitable contribution from Janssen Pharmaceutical Companies of Johnson & Johnson. GWTG-Stroke has been funded in the past through support from Boeringher-Ingelheim, Merck, Bristol-Myers Squibb/Sanofi Pharmaceutical Partnership and the AHA Pharmaceutical Roundtable.

Disclosures

Dr Fonarow serves as a member of the Get With the Guidelines Steering Committee, receives research support from the National Institutes of Health, and is an employee of the University of California, which holds a patent on retriever devices for stroke. Dr Saver serves as a member of the Get With the Guidelines Science Subcommittee; as a scientific consultant regarding trial design and conduct to CoAxia, Concentric Medical, Talacris, Ferrer, Photothera, Brainsgate, Sygnis, and Ev3; received lecture honoraria from Ferrer; is an employee of the University of California, which holds a patent on retriever devices for stroke. Dr Smith is an unpaid volunteer on GWTG committees. Dr Broderick receives funding from the NINDS for multiple ongoing trials, receives study medications from Genentech for two ongoing NINDS studies, and has received payment as a consultant to Genentech and he has been reimbursed for travel to meetings by Genentech. Dr Kleindorfer none. Dr Sacco is immediate past president of the AHA.

Dr Pan is a member of the DCRI, which serves as the AHA GWTG data-coordinating center. Dr Olson is a member of the DCRI, which serves as the AHA GWTG data-coordinating center and consultant to Bristol Myers Squibb-Sanofi. Dr Hernandez is a member of the DCRI, which serves as the AHA GWTG data-coordinating center. Dr Hernandez is a recipient of an AHA Pharmaceutical Roundtable grant and serves as a consultant to Johnson&Johnson and Amylin. Dr Peterson serves as PI of the Data Analytic Center for AHA GWTG. Dr Schwamm serves as chair of the AHA GWTG Steering Committee, serves as a consultant to the Massachusetts Department of Public Health.

References

- Roger VL, Go AS, Lloyd-Jones DM, Benjamin EJ, Berry JD, Borden WB, Bravata DM, Dai S, Ford ES, Fox CS, Fullerton HJ, Gillespie C, Hailpern SM, Heit JA, Howard VJ, Kissela BM, Kittner SJ, Lackland DT, Lichtman JH, Lisabeth LD, Makuc DM, Marcus GM, Marelli A, Matchar DB, Moy CS, Mozaffarian D, Mussolino ME, Nichol G, Paynter NP, Soliman EZ, Sorlie PD, Sotoodehnia N, Turan TN, Virani SS, Wong ND, Woo D, Turner MB; on behalf of the American Heart Association Statistics Committee and Stroke Statistics Subcommittee. Heart disease and stroke statistics 2012 update: a report from the American Heart Association. *Circulation*. 2012;125:e2–e220.
- Krumholz HM, Normand SL, Spertus JA, Shahian DM, Bradley EH. Measuring performance for treating heart attacks and heart failure: the case for outcomes measurement. *Health Aff (Millwood)*. 2007;26:75–85.
- Krumholz HM, Normand SL. Public reporting of 30-day mortality for patients hospitalized with acute myocardial infarction and heart failure. *Circulation*. 2008;118:1394–1397.
- Lindenaer PK, Bernheim SM, Grady JN, Lin Z, Wang Y, Wang Y, Merrill AR, Han LF, Rapp MT, Drye EE, Normand SL, Krumholz HM. The performance of US hospitals as reflected in risk-standardized 30-day mortality and readmission rates for medicare beneficiaries with pneumonia. *J Hosp Med*. 2010;5:E12–18.
- Hospital Compare. Department of Health and Human Services. <http://www.hospitalcompare.hhs.gov>. Accessed August 24, 2011.
- Lichtman JH, Leifheit-Limson EC, Jones SB, Watanabe E, Bernheim SM, Phipps MS, Bhat KR, Savage SV, Goldstein LB. Predictors of hospital readmission after stroke: a systematic review. *Stroke*. 2010;41:2525–2533.
- Adams HP Jr, Davis PH, Leira EC, Chang KC, Bendixen BH, Clarke WR, Woolson RF, Hansen MD. Baseline NIH Stroke Scale score strongly predicts outcome after stroke: a report of the Trial of ORG 10172 in Acute Stroke Treatment (TOAST). *Neurology*. 1999;53:126–131.
- Dhamoon MS, Moon YP, Paik MC, Boden-Albala B, Rundek T, Sacco RL, Elkind MS. Long-term functional recovery after first ischemic stroke: the Northern Manhattan Study. *Stroke*. 2009;40:2805–2811.
- Johnston KC, Connors AF Jr, Wagner DP, Knaus WA, Wang X, Haley EC Jr. A predictive risk model for outcomes of ischemic stroke. *Stroke*. 2000;31:448–455.
- Henon H, Godefroy O, Leys D, Mounier-Vehier F, Lucas C, Rondepierre P, Duhamel A, Pruvo JP. Early predictors of death and disability after acute cerebral ischemic event. *Stroke*. 1995;26:392–398.
- Nedelchev K, Renz N, Karameshev A, Haefeli T, Brekenfeld C, Meier N, Remonda L, Schroth G, Arnold M, Mattle HP. Predictors of early mortality after acute ischaemic stroke. *Swiss Med Wkly*. 2010;140:254–259.
- Chang KC, Tseng MC, Tan TY, Liou CW. Predicting 3-month mortality among patients hospitalized for first-ever acute ischemic stroke. *J Formos Med Assoc*. 2006;105:310–317.
- Weimar C, Konig IR, Kraywinkel K, Ziegler A, Diener HC. Age and National Institutes of Health Stroke Scale score within 6 hours after onset are accurate predictors of outcome after cerebral ischemia: development and external validation of prognostic models. *Stroke*. 2004;35:158–162.
- Smith EE, Shobha N, Dai D, Olson DM, Reeves MJ, Saver JL, Hernandez AF, Peterson ED, Fonarow GC, Schwamm LH. Risk score for in-hospital ischemic stroke mortality derived and validated within the Get With The Guidelines-Stroke Program. *Circulation*. 2010;122:1496–1504.
- Fonarow GC, Reeves MJ, Zhao X, Olson DM, Smith EE, Saver JL, Schwamm LH, for the Get With the Guidelines-Stroke Steering Committee and Investigators. Age-related differences in characteristics, performance measures,

- treatment trends, and outcomes in patients with ischemic stroke. *Circulation*. 2010;121:879–891.
16. Fonarow GC, Smith EE, Reeves MJ, Pan W, Olson D, Hernandez AF, Peterson ED, Schwamm LH, Get With The Guidelines Steering Committee and Hospitals. Hospital-level variation in mortality and rehospitalization for medicare beneficiaries with acute ischemic stroke. *Stroke*. 2011;42:159–166.
 17. American Hospital Association. *American Hospital Association Hospital Statistics 2009 Edition*. Chicago, IL: American Hospital Association; 2009.
 18. Hammill BG, Hernandez AF, Peterson ED, Fonarow GC, Schulman KA, Curtis LH. Linking inpatient clinical registry data to Medicare claims data using indirect identifiers. *Am Heart J*. 2009;157:995–1000.
 19. Breiman L. *Classification and Regression Trees*. New York, NY: Kluwer Academic Publishers; 1984.
 20. Brott T, Adams HP Jr, Olinger CP, Marler JR, Barsan WG, Biller J, Spilker J, Holleran R, Eberle R, Hertzberg V, Rorick M, Moonaw CJ, Walker M. Measurement of acute cerebral infarction: a clinical examination scale. *Stroke*. 1989;20:864–870.
 21. Goldstein LB, Bertels C, Davis JN. Interrater reliability of the NIH Stroke Scale. *Arch Neurol*. 1989;46:660–662.
 22. Cook NR. Use and misuse of the receiver operating characteristic curve in risk prediction. *Circulation*. 2007;115:928–935.
 23. Weimar C, Ziegler A, König IR, Diener HC. Predicting functional outcome and survival after acute ischemic stroke. *J Neurol*. 2002;249:888–895.
 24. Reeves MJ, Fonarow GC, Smith EE, Pan W, Olson D, Hernandez AF, Peterson ED, Schwamm LH. Representativeness of the Get With The Guidelines-Stroke Registry: comparison of patient and hospital characteristics among Medicare beneficiaries hospitalized with ischemic stroke. *Stroke*. 2012;43:44–49.
 25. Kasner SE, Chalela JA, Luciano JM, Cucchiara BL, Raps EC, McGarvey ML, Conroy MB, Localio AR. Reliability and validity of estimating the NIH stroke scale score from medical records. *Stroke*. 1999;30:1534–1537.