

# Whole-Genome Sequencing Reveals Lactase Persistence Adaptation in European Dogs

Yan-Hu Liu,<sup>†,1</sup> Lu Wang,<sup>†,2</sup> Zhiguo Zhang,<sup>†,3</sup> Newton O. Otecko,<sup>1</sup> Saber Khederzadeh,<sup>1</sup> Yongqin Dai,<sup>2</sup> Bin Liang,<sup>\*,2,3,4</sup> Guo-Dong Wang,<sup>\*,1,4,5</sup> and Ya-Ping Zhang<sup>\*,1,2,4,5</sup>

<sup>1</sup>State Key Laboratory of Genetic Resources and Evolution, Yunnan Laboratory of Molecular Biology of Domestic Animals, Kunming Institute of Zoology, Chinese Academy of Sciences, Kunming, China

<sup>2</sup>State Key Laboratory for Conservation and Utilization of Bio-Resources in Yunnan, and School of Life Sciences, Yunnan University, Kunming, Yunnan, China

<sup>3</sup>Key Laboratory of Animal Models and Human Disease Mechanisms of the Chinese Academy of Sciences and Yunnan Province, Kunming Institute of Zoology, Chinese Academy of Sciences, Kunming, China

<sup>4</sup>Center for Excellence in Animal Evolution and Genetics, Kunming Institute of Zoology, Chinese Academy of Sciences, Kunming, China

<sup>5</sup>Kunming College of Life Science, University of Chinese Academy of Sciences, Kunming, Yunnan, China

<sup>†</sup>These authors contributed equally to this work.

\*Corresponding authors: E-mails: zhangyp@mail.kiz.ac.cn; wanggd@mail.kiz.ac.cn; liangb73@ynu.edu.cn.

Associate editor: Yoko Satta

## Abstract

Coexistence and cooperation between dogs and humans over thousands of years have supported convergent evolutionary processes in the two species. Previous studies found that Eurasian dogs evolved into a distinct geographic cluster. In this study, we used the genomes of 242 European dogs, 38 Southeast Asian indigenous (SEAI) dogs, and 41 gray wolves to identify adaptation of European dogs. We report 86 unique positively selected genes in European dogs, among which is *LCT* (lactase). *LCT* encodes lactase, which is fundamental for the digestion of lactose. We found that an A-to-G mutation (chr19:38,609,592) is almost fixed in Middle Eastern and European dogs. The results of two-dimensional site frequency spectrum (2D SFS) support that the mutation is under soft sweep. We inferred that the onset of positive selection of the mutation is shorter than 6,535 years and behind the well-developed dairy economy in central Europe. It increases the expression of *LCT* by reducing its binding with *ZEB1*, which would enhance dog's ability to digest milk-based diets. Our study uncovers the genetic basis of convergent evolution between humans and dogs with respect to diet, emphasizing the import of the dog as a biomedical model for studying mechanisms of the digestive system.

**Key words:** European dogs, population genomics, lactase persistence, milk-drinking cultures.

Dogs were domesticated between 15,000 and 40,000 years ago and spread around the world alongside humans (Vilà et al. 1997; Germonpré et al. 2009; Ostrander et al. 2019). They have adapted to both natural and human environments through natural and artificial selection (Wang et al. 2013, 2014, 2020; Gou et al. 2014; Li et al. 2014; Freedman et al. 2016; Liu et al. 2018; Wu et al. 2020). For example, *AMY2B* (amylase-alpha-2B) and *MGAM* (maltase-glucoamylase) which are under positive selection in dogs are known to play an important role in starch digestion (Axelsson et al. 2013; Wang et al. 2013). Thus, adaptation to a starch-rich diet during the agricultural revolution was crucial to the domestication of dogs. Meanwhile, a new copy of *AKR1B1* (aldoketo reductase family 1 member B) transcript is identified in the dog genome but absent in gray wolf and dhole genomes (Wang, Shao, et al. 2019b). That may enhance de novo fatty acid synthesis and antioxidant capacity in dogs. These genetic changes are indicative of the dog's adaptability to dietary changes during the spread of prehistoric agriculture

(Arendt et al. 2016). It is undeniable that human culture heavily impacts the evolution of dogs (Ollivier et al. 2016).

Based on whole-genome sequencing of canids, Eurasian dogs bifurcate into two major genetic groups: European dogs and Southeast Asian indigenous (SEAI) dogs (Frantz et al. 2016; Wang et al. 2016). Another study revealed that Eurasian dogs split into four distinct geographic clusters: Southeast Asia, India, Middle East, and Europe (Botigué et al. 2017). This population structure implies that Eurasian dogs underwent divergent evolution. Recently, 722 canine whole-genome sequences were published (Plassais et al. 2019), expanding the capacity for in-depth investigation of the adaptive evolution in European dogs.

Genetic basis of adaptation to milk-based diets in Europeans has been reported (Hollox et al. 2001; Enattah et al. 2002). Human has a great impact on dogs, including the diets (Axelsson et al. 2013; Arendt et al. 2016; Wang, Larson, et al. 2019a). Here, we have studied the genomes of 242 European dogs, 38 SEAI dogs, and 41 gray wolves to

understand the adaptation of European dogs. We discuss how dogs were influenced by the dietary cultures of the European people.

## Results and Discussion

### Sample Information and Population Structure

Previous study confirmed that the best cost/benefit argument of whole-genome sequencing is two dogs per breed (Dreger et al. 2016). To avoid sampling bias (from 1 to 44 individuals per breed), we picked 5 individuals with the highest genome coverage for every breed with more than 5 individuals. We used all individuals for breeds in which sample size is less than 5. In total, we have 242 European dog sequences including 239 samples from 96 European breeds and 3 Portugal village dogs, 38 SEAI dogs, and 41 gray wolves from the public 722 canine genomes data set (supplementary table S1, Supplementary Material online) (Plassais et al. 2019). Principal component analysis (PCA) explores the consistency of the genetic structure and the origin information assigned in the Federation Cynologique Internationale (FCI). PC1 and PC2 showed clear three groups: SEAI dogs, European dogs, and gray wolves (supplementary fig. S1, Supplementary Material online).

### PSGs in European Dogs

We performed extended number of segregating sites by length (XP-nSL) (Garud et al. 2015) and cross-population extended haplotype homozygosity (XP-EHH) tests (Sabeti et al. 2007) to scan for positively selected signals in the autosomes. Using empirical  $P < 0.01$  as threshold (supplementary note, Supplementary Material online), 104 positively selected genes (PSGs) were commonly identified by XP-nSL (363 PSGs) and XP-EHH (429 PSGs) in European dogs. To identify the unique PSGs in European breeds, XP-nSL and XP-EHH were also carried out to detect the PSGs in SEAI dogs. There are 137 PSGs commonly identifying in SEAI dogs by both methods. Out of the 104 PSGs in European dogs, 86 genes (supplementary table S2, Supplementary Material online and fig. 1) were retained after excluding 137 PSGs detected in SEAI dogs.

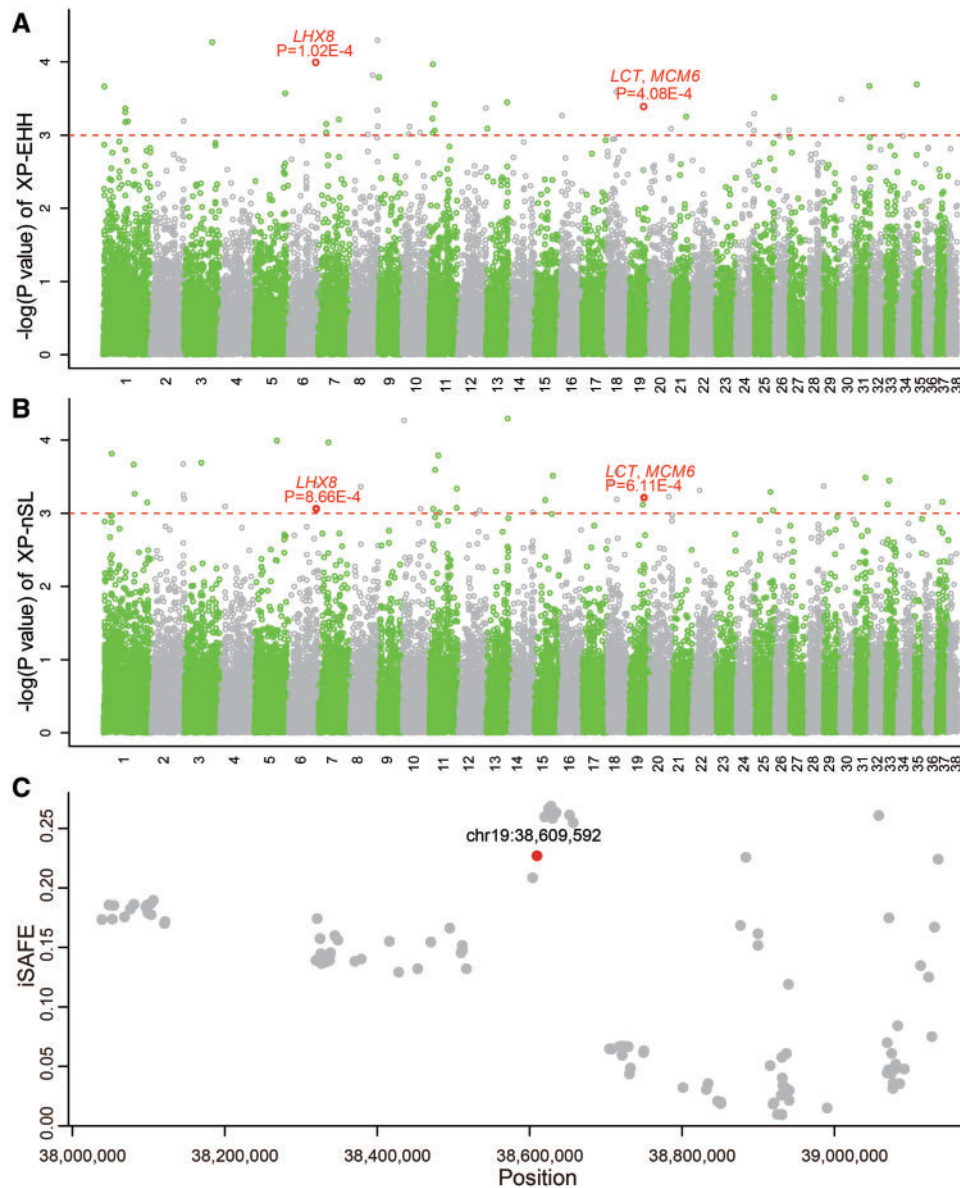
Among the 86 PSGs, three genes show strong positively selected signals ( $P < 0.001$ ) in XP-EHH and XP-nSL (fig. 1), including lactase (*LCT*), minichromosome maintenance complex component 6 (*MCM6*), and LIM homeobox 8 (*LHX8*). *LCT* is a hydrolase that hydrolyze lactose into galactose and glucose. After weaning, most mammals reduced expression of *LCT* in the intestinal tissues and cannot digest milk (Sebastio et al. 1989; Büller et al. 1990; Lacey et al. 1994). However, lactase persistence (LP) is common in adult humans who live at northern and western Europe, as well as in African and Middle Eastern pastoralist groups, providing for by mutations in *LCT* and *MCM6* (Hollox et al. 2001; Enattah et al. 2002; Ingram et al. 2009). A Steppe-associated expansion during the early Bronze Age contributed to advance LP in South Asians (Satta and Takahata 2020). Positive selection always creates long linkage disequilibrium (LD). LD analysis using Haploview (Barrett et al. 2005) shows that *LCT* and *MCM6* are tightly linked in European dogs (supplementary fig. S2,

Supplementary Material online). It is consistent with the finding in Finnish pedigrees (Enattah et al. 2002).

### The Convergent Distribution of LP in Humans and *LCT-G* SNP in Dogs

To identify candidate SNPs,  $F_{st}$  by site between European dogs and gray wolves were calculated across whole genome and the top 1% sites taken for gene annotation (Danecek et al. 2011). One SNP (chr19:38,609,592, A-to-G) showed high allele frequency in European dogs (91.7%) compared with the SEAI dogs (61.8%) and wolves (6.1%). Thus, we used integrated Selection of Allele Favored by Evolution (iSAFE) analysis to search for candidate SNPs in a 1.2-Mb around chr19:38,609,592 (fig. 1C) (Akbari et al. 2018). To exclude effects of the demographic history, we simulated 100,000 regions with 1.2 Mb to calculate iSAFE under the demographic history (Liu et al. 2018). The result of iSAFE shows that the A-to-G mutation is significantly under positive selection ( $P = 1.09E-7$ ). We performed 2D SFS to infer the core region under selection (Fujito et al. 2018; Satta et al. 2020). There are 69 SNPs located at the core region with strong LD ( $r^2 > 3/4$ ). Thus, we performed the simulations for 20,000 regions with 11,630 bp containing 69 SNPs and calculated 2D SFS under the demographic history (Liu et al. 2018). The significantly small values of  $F_{\sigma}$ ,  $L_{c0}$ , and large  $i_{\max}$ ,  $\gamma^*(10)$  and  $G_{c0}^*$  support that *LCT* is under soft sweep in European dogs (supplementary table S3, Supplementary Material online). It suggests that more than one derived allelic lineages have been undergoing the selective sweep. The time to the most recent common ancestor ( $t_{coa}$ ) of A-to-G mutation is  $6,535 \pm 180$  years ago. This time is longer than 4,000 years that LP-associated allele earliest appeared in ancient Europeans (Gamba et al. 2014; Mathieson et al. 2015), and longer than the  $t_{coa}$  ( $3,280 \pm 480$  years ago) of T at rs4988235 in Europeans inferred by 2D SFS (Satta et al. 2020; Satta and Takahata 2020). Because T at rs4988235 in Europeans is under hard sweep, its onset time of positive selection ( $t_{sel}$ ) is longer than  $t_{coa}$  (3,280 years) (Satta and Takahata 2020). On the contrary, the  $t_{sel}$  of A-to-G mutation in European dogs is younger than  $t_{coa}$  (6,535 years) due to its soft sweep. Considering the presence of A-to-G mutation in wolves and gene flows between dogs and wolves (Wang et al. 2016), it is plausible that A-to-G mutation had been existing in European dogs before the onset of positive selection. The  $t_{sel}$  of A-to-G mutation is shorter than the time that the earliest milk consumption in the Near East and southeastern Europe appeared around 6,500 BC (Evershed et al. 2008). Dairy economy was well developed in central Europe by 6,500 years ago (Curry 2013).

To further explore the global distribution of *LCT-G* in dogs, we calculated its allele frequency from 737 individuals (fig. 2) (Plassais et al. 2019). The *LCT-G* allele is almost fixed in Middle Eastern dogs (92.2%). A similar pattern has been reported in Middle Eastern human populations (Swallow 2003; Ingram et al. 2009). Because milk consumption emerged in the Near East and southeastern Europe 7,000–8,500 years ago (Evershed et al. 2008). On the contrary, most Chinese adult humans are lactose intolerant (Bolin et al. 1970; Bolin and

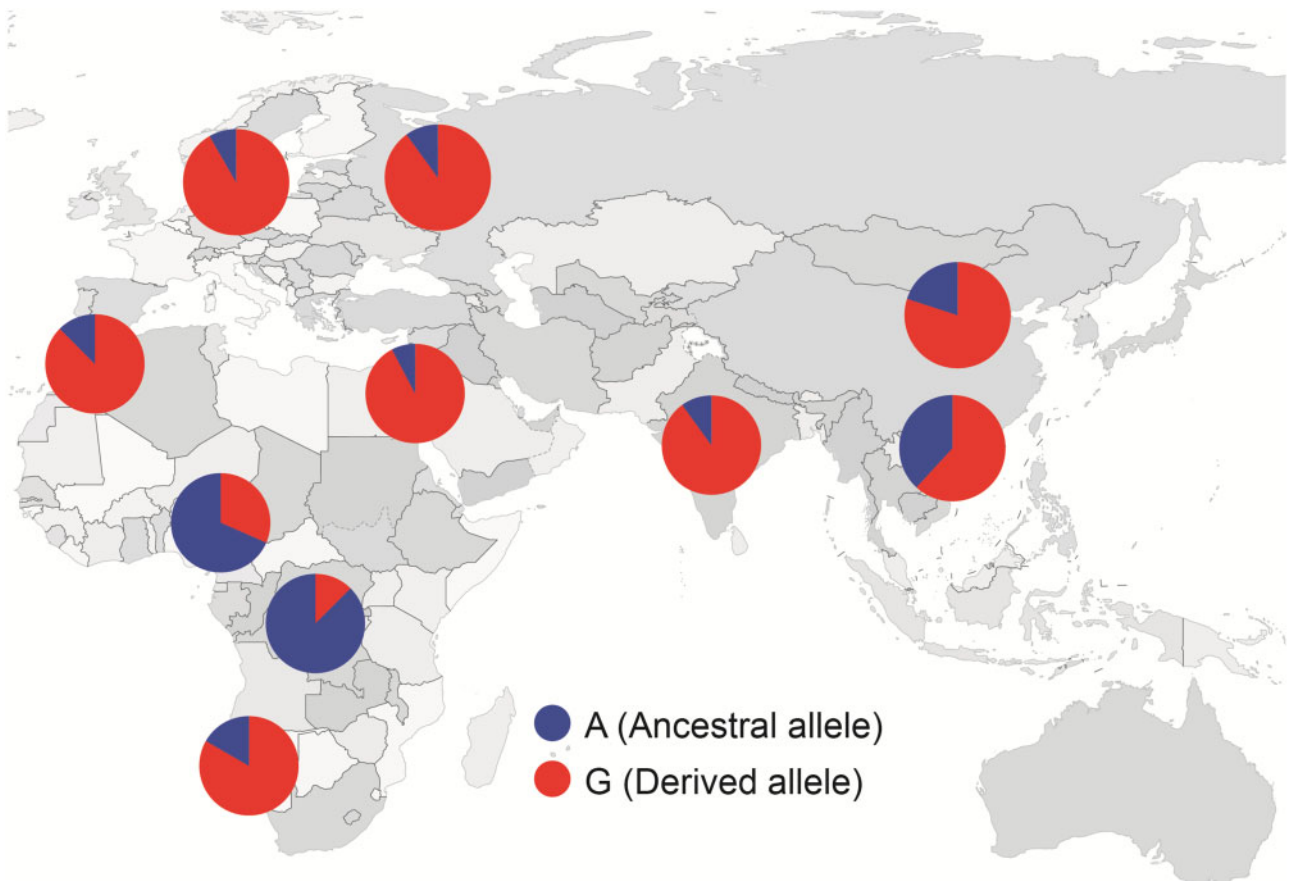


**Fig. 1.** The positive selection analysis of European dogs. Genome scans with XP-EHH (A) and XP-nSL (B). Red dotted line marks empirical  $P = 0.001$ . (C) iSAFE analysis across 1.2 Mb around chr19:38,609,592 (red).

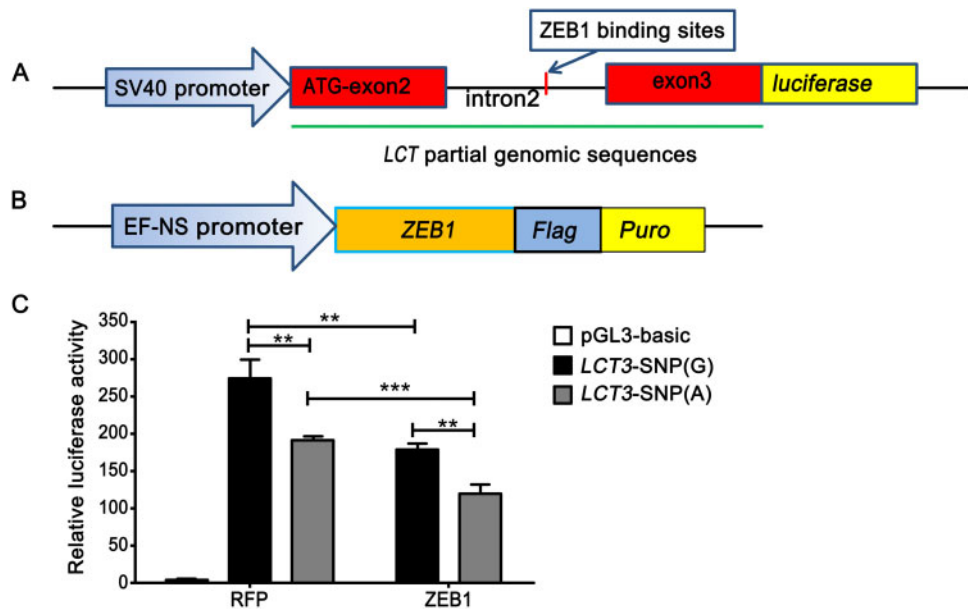
Davis 1970; Bryant et al. 1970; Wang et al. 1984). Therefore, it is clearly plausible that the increased expression of *LCT* helps European dogs to adapt to a milk-based diet. The allele frequency is also high in Indian dogs (90.0%). The LP among Indian human populations is complex, with LP high in the North Indians but low in South Indians (Tandon et al. 1981; Enattah et al. 2002). In Africa, the allele frequency is low among Congolese (basenji, 12.5%) and Nigerian indigenous dogs (31.6%), but high in Namibian village dogs (83.3%) and Moroccan (Sloughi, 87.5%). Notably, central Namibian dogs are genetically closest to American dogs, which implies predominantly non-African origins (Boyko et al. 2009). Their high allele frequency might be caused by the nonindigenous lineage. For African human populations, pastoralist populations predominantly exhibit high LP in contrast to nonpastoralists (Mulcare et al. 2004; Tishkoff et al. 2007).

#### *LCT* SNP (A > G) Increase the *LCT* Expression

The A-to-G mutation is located in intron 2 of *LCT*. The intron 2 is highly conserved across mammals and its deletion significantly reduces the expression of *LCT* in mice (Labrie et al. 2016). Based on JASPAR database (Khan et al. 2017), transcription factor *ZEB1* (zinc finger E-box-binding homeobox 1) potentially binds to this SNP position (supplementary table S4, Supplementary Material online). The A-to-G mutation in *LCT* reduces its consistency with *ZEB1* (relative score 0.987 vs. 0.853). Additionally, the base in *ZEB1* which binds to this SNP in *LCT* is highly conserved in *Homo sapiens* (sequence logo = 2, supplementary fig. S3, Supplementary Material online). It is plausible that the A-to-G mutation may change *LCT* expression by modifying *ZEB1* binding. To verify this, *LCT*-G and *LCT*-A luciferase reporter constructs were engineered (fig. 3A and supplementary note, Supplementary Material online) and cotransfected into HEK-293T cells with *ZEB1* expression



**Fig. 2.** The distribution SNPs of *LCT* in the global panel. Red portions of the pies represent the ratio of *LCT* SNP (G) whereas the blue represents the ratio of *LCT* SNP (A). The breed origin was obtained from FCI.



**Fig. 3.** *LCT* SNP (G > A) influences the suppression of *LCT* expression with the involvement of *ZEB1*. (A) A schematic representation of the *LCT* construct. The DNA sequence including exon2, intron2, and exon3 of *LCT* are linked by a promoter and luciferase. (B) A schematic representation of the *ZEB1* construct. *ZEB1* is linked by a promoter, flag and *puro*. (C) HEK-293T cells were cotransfected with pCMV-Renilla (control), *LCT* SNP (G) or *LCT* SNP (A) Luciferase reporter construct as well as the *ZEB1* expressing vector in sextuplicate. Two days after transfection, the cells were collected for the dual-luciferase reporter assays. Data are means  $\pm$  SD. \*\* Mean  $P < 0.05$  (*t*-test), \*\*\* Mean  $P < 0.001$ . RFP, red fluorescent protein.

vector (fig. 3B). Luciferase activity shows that *LCT-G* has a higher expression than *LCT-A* (fig. 3C). When *ZEB1* was cotransfected, the luciferase activity of *LCT-A* and *LCT-G* luciferase reporter constructs were significantly decreased. These results suggest that A-to-G mutation in *LCT* increases the expression of *LCT* by weakening the binding of *ZEB1*. Thus, we infer that the mutation enhances the function of *LCT*, resulting in LP of European dogs. The similar pattern is found in humans. For Europeans, the SNP C/T-13910 located ~14 kb upstream of *LCT* is associated with the LP and under strong positive selection (Enattah et al. 2002). The region surrounding C/T-13910 increases the expression of *LCT* as a strong enhancer (Enattah et al. 2002; Olds and Sibley 2003; Troelsen et al. 2003). The *LCT* intron 2 is a regulatory element for the development of LP in humans and mice (Labrie et al. 2016). We therefore infer that an elevated expression of *LCT* in European dogs confers their adaptation to milk-based diets.

## Conclusion

Genes for LP coevolved over time with variations in human dietary preferences and milk-ingestion cultures (Beja-Pereira et al. 2003). Of all domestic animals, dogs have had one of the longest mutual coexistence with humans, sharing among other things like food and living environments. There is evidence for convergent evolution between humans and dogs regarding several factors (Perry et al. 2007; Axelsson et al. 2013; Wang et al. 2014; Liu et al. 2018). Here, we describe the co-evolution between dogs and human dietary culture at the genome level. Based on whole-genome analyses and gene expression assays, we outline the mutational change in *LCT* gene which increases its expression to confer adaptability to milk-based diets. This study expands our understanding of the genetic basis of dogs' adaptation to human diets. It is imperative that the dog provides a suitable large animal model for studying human diseases and medicines, especially those of the digestive tract.

## Materials and Methods

### Sample Information

The raw SNPs files of 722 individuals were downloaded from NCBI (<https://www.ncbi.nlm.nih.gov/bioproject/PRJNA448733>, last accessed July 17, 2021) (Plassais et al. 2019). SNPs in autosomes marked by PASS were used for analysis. We created a metadata of countries of origins of dog breeds from the FCI (<http://www.fci.be>, last accessed July 17, 2021). PCA was carried out using smartpca in EIGENSOFT (v7.2.1). Chr19:38,609,592 SNP information of 15 Nigerian dogs were obtained from Liu et al. (2018).

### Positive Selection

Based on the genetic map downloaded from [https://github.com/auton1/dog\\_recomb/tree/master/canFam3.1/maps](https://github.com/auton1/dog_recomb/tree/master/canFam3.1/maps) (last accessed July 17, 2021) (Auton et al. 2013), genotypes were phased by SHAPEIT (v2.r904) with 0.5 Mb windows and an effective population size of 83,600 (Delaneau et al. 2012). Subsequently, XP-EHH and XP-nSL were calculated

using selscan (v1.3.0) (Sabeti et al. 2007; Szpiech and Hernandez 2014). The empirical *P* value of XP-EHH and XP-nSL were calculated following the method previously reported (supplementary note, Supplementary Material online) (Lee et al. 2014). The genomic regions with *P* < 0.01 were considered for gene annotation. Gene set was download from Ensembl (version CanFam3.1.101). iSAFE was performed for 1.2 Mb around the chr19:38,609,592 (chr19:36,109,592-41,109,592) with gray wolves as the control. 2D SFS was carried out for 69 SNPs located at the core region with strong LD (chr19: 38,600,610-38,612,240,  $r^2 > 3/4$ ). *P* values for iSAFE and 2D SFS were got based on the simulations (supplementary note, Supplementary Material online) of population history from Liu et al (2018) by ms (Hudson 2002). LD was carried out for *LCT* and *MCM6* (19:38,572,058-38,660,280) by haploview (Barrett et al. 2005). SNPs with minor allele frequency  $\geq 0.01$  were used.

### Generation of Constructs and Dual-Luciferase Assays

The 5,643-bp partial genomic DNA sequences of *LCT* genes, including exon 2, intron 2, and exon 3, were amplified. The PCR products were cloned into pGL3-basic Luciferase Reporter Vector (Promega, Madison, WI, USA) in *Xba*I and *Bam*HI (NEB, USA) digestion sites to generate wild-type *LCT* luciferase constructs. It is formed the template for making mutated *LCT* luciferase constructs. The 3,378-bp full-length CDS (Coding DNA Sequence) of dog *ZEB1* was amplified by primers. The PCR products were cloned into LentiV2-RFP vector in *Xba*I and *Xho*I digestion sites to generate *ZEB1* expressing vector (supplementary note, Supplementary Material online). The HEK-293T cells were seeded into 24-well plates at  $1 \times 10^5$  cells per well (supplementary note, Supplementary Material online). On the following day, the cells were transfected with SNP (G) or SNP (A) luciferase reporter construct (500 ng per well), and an internal control pCMV-Renilla control (25 ng per well) as well as the *ZEB1* expressing vector or negative control LentiV2-RFP vector (25 ng per well) in sextuplicate using Lipofectamine 3000 reagent (Invitrogen, Carlsbad, CA, USA). Two days after transfection, cells were collected to measure the luciferase activity by the Dual-Luciferase Reporter Assay System (Promega), and luciferase expression was normalized to renilla luciferase expression. Student's two-tailed *t*-test was used to analyze the statistical significance of data.

## Supplementary Material

Supplementary data are available at *Molecular Biology and Evolution* online.

## Acknowledgments

The authors are thankful to Laurent A. F. Frantz (School of Biological and Chemical Sciences, Queen Mary University of London) for helpful feedback and discussions related to this work. This work was supported by National Natural Science Foundation of China (32000298), and the Innovative Research Team (in Science and Technology) of Yunnan Province (201905E160019), the National Key R&D Program

of China (2019YFA0707101), Strategic Priority Research Program (XDPB17) of the Chinese Academy of Sciences (CAS), and Key Research Program of Frontier Sciences of the CAS (ZDBS-LY-SM011). G.-D.W. was supported by the National Youth Talent Support Program. They also acknowledge the following for funding: the grant (2018KF004) from State Key Laboratory for Conservation and Utilization of Bio-Resources in Yunnan, Yunnan University. This work was supported by the Animal Branch of the Germplasm Bank of Wild Species, Chinese Academy of Sciences (the Large Research Infrastructure Funding).

## Data Availability

The data underlying this article are available in FigShare (<https://doi.org/10.6084/m9.figshare.14411024>, last accessed July 17, 2021). The VCF file containing 91 million variants and 722 genomes was published on NCBI (<https://www.ncbi.nlm.nih.gov/bioproject/PRJNA448733>, last accessed July 17, 2021) (Plassais et al. 2019) and at <https://doi.org/10.1038/s41467-019-09373-w> (last accessed July 17, 2021). No new genome sequencing data were yielded.

## References

- Akbari A, Vitti JJ, Iranmehr A, Bakhtiari M, Sabeti PC, Mirarab S, Bafna V. 2018. Identifying the favored mutation in a positive selective sweep. *Nat Methods*. 15(4):279–282.
- Arendt M, Cairns KM, Ballard JW, Savolainen P, Axelsson E. 2016. Diet adaptation in dog reflects spread of prehistoric agriculture. *Heredity* 117(5):301–306.
- Auton A, Rui LY, Kidd J, Oliveira K, Nadel J, Holloway JK, Hayward JJ, Cohen PE, Grealley JM, Wang J, et al. 2013. Genetic recombination is targeted towards gene promoter regions in dogs. *PLoS Genet*. 9(12):e1003984.
- Axelsson E, Ratnakumar A, Arendt M-L, Maqbool K, Webster MT, Perloski M, Liberg O, Arnemo JM, Hedhammar Å, Lindblad-Toh K. 2013. The genomic signature of dog domestication reveals adaptation to a starch-rich diet. *Nature* 495(7441):360–364.
- Büller HA, Kothe MJ, Goldman DA, Grubman SA, Sasak WV, Matsudaira PT, Montgomery RK, Grand RJ. 1990. Coordinate expression of lactase-phlorizin hydrolase mRNA and enzyme levels in rat intestine during development. *J Biol Chem*. 265(12):6978–6983.
- Barrett JC, Fry B, Maller J, Daly MJ. 2005. Haploview: analysis and visualization of LD and haplotype maps. *Bioinformatics* 21(2):263–265.
- Beja-Pereira A, Luikart G, England PR, Bradley DG, Jann OC, Bertorelle G, Chamberlain AT, Nunes TP, Metodiev S, Ferrand N, et al. 2003. Gene-culture coevolution between cattle milk protein genes and human lactase genes. *Nat Genet*. 35(4):311–313.
- Bolin TD, Davis AE. 1970. Lactose intolerance in Australian-born Chinese. *Australas Ann Med*. 19(1):40–41.
- Bolin TD, Davis AE, Seah CS, Chua KL, Yong V, Kho KM, Siak CL, Jacob E. 1970. Lactose intolerance in Singapore. *Gastroenterology* 59(1):76–84.
- Botigué LR, Song S, Scheu A, Gopalan S, Pendleton AL, Oetjens M, Taravella AM, Seregély T, Zeeb-Lanz A, Arbogast R-M, et al. 2017. Ancient European dog genomes reveal continuity since the Early Neolithic. *Nat Commun*. 8:16082.
- Boyko AR, Boyko RH, Boyko CM, Parker HG, Castelhanos M, Corey L, Degenhardt JD, Auton A, Hedimbi M, Kityo R, et al. 2009. Complex population structure in African village dogs and its implications for inferring dog domestication history. *Proc Natl Acad Sci U S A*. 106(33):13903–13908.
- Bryant GD, Chu YK, Lovitt R. 1970. Incidence and aetiology of lactose intolerance. *Med J Aust*. 1(26):1285–1288.
- Curry A. 2013. Archaeology: the milk revolution. *Nature* 500(7460):20–22.
- Danecek P, Auton A, Abecasis G, Albers CA, Banks E, DePristo MA, Handsaker RE, Lunter G, Marth GT, Sherry ST, et al. 2011. The variant call format and VCFtools. *Bioinformatics* 27(15):2156–2158.
- Delaneau O, Marchini J, Zagury J-F. 2012. A linear complexity phasing method for thousands of genomes. *Nat Methods*. 9(2):179–181.
- Dreger DL, Rimbault M, Davis BW, Bhatnagar A, Parker HG, Ostrander EA. 2016. Whole-genome sequence, SNP chips and pedigree structure: building demographic profiles in domestic dog breeds to optimize genetic-trait mapping. *Dis Model Mech*. 9(12):1445–1460.
- Enattah NS, Timo S, Erkki S, Terwilliger JD, Leena P, Järvelä I. 2002. Identification of a variant associated with adult-type hypolactasia. *Nat Genet*. 30(2):233–237.
- Evershed RP, Payne S, Sherratt AG, Copley MS, Coolidge J, Urem-Kotsu D, Kotsakis K, Özdoğan M, Özdoğan AE, Nieuwenhuys O, et al. 2008. Earliest date for milk use in the Near East and southeastern Europe linked to cattle herding. *Nature* 455(7212):528–531.
- Frantz LA, Mullin VE, Pionnier-Capitan M, Lebrasseur O, Ollivier M, Perri A, Linderholm A, Mattiangeli V, Teasdale MD, Dimopoulos EA, et al. 2016. Genomic and archaeological evidence suggest a dual origin of domestic dogs. *Science* 352(6290):1228–1231.
- Freedman AH, Schweizer RM, Vecchyo DO, Han E, Davis BW, Gronau I, Silva PM, Galaverni M, Fan Z, Marx P, et al. 2016. Demographically based evaluation of genomic regions under selection in domestic dogs. *PLoS Genet*. 12(3):e1005851.
- Fujito NT, Satta Y, Hayakawa T, Takahata N. 2018. A new inference method for detecting an ongoing selective sweep. *Genes Genet Syst*. 93(4):149–161.
- Gamba C, Jones ER, Teasdale MD, McLaughlin RL, Gonzalez-Fortes G, Mattiangeli V, Domboróczki L, Kóvári I, Pap I, Anders A, et al. 2014. Genome flux and stasis in a five millennium transect of European prehistory. *Nat Commun*. 5:5257.
- Garud NR, Messer PW, Buzbas EO, Petrov DA. 2015. Recent selective sweeps in North American *Drosophila melanogaster* show signatures of soft sweeps. *PLoS Genet*. 11(2):e1005004.
- Germonpré M, Sablin MV, Stevens RE, Helges RE, Hofreiter M, Stiller M, Després VR. 2009. Fossil dogs and wolves from Palaeolithic sites in Belgium, the Ukraine and Russia: osteometry, ancient DNA and stable isotopes. *J Archaeol Sci*. 36(2):473–490.
- Gou X, Wang Z, Li N, Qiu F, Xu Z, Yan D, Yang S, Jia J, Kong X, Wei Z, et al. 2014. Whole genome sequencing of six dog breeds from continuous altitudes reveals adaptation to high-altitude hypoxia. *Genome Res*. 24(8):1308–1315.
- Hollox EJ, Poulter M, Zvarik M, Ferak V, Krause A, Jenkins T, Saha N, Kozlov AI, Swallow DM. 2001. Lactase haplotype diversity in the Old World. *Am J Hum Genet*. 68(1):160–172.
- Hudson RR. 2002. Generating samples under a Wright-Fisher neutral model of genetic variation. *Bioinformatics* 18(2):337–338.
- Ingram CJ, Mulcare CA, Yuval I, Thomas MG, Swallow DM. 2009. Lactose digestion and the evolutionary genetics of lactase persistence. *Hum Genet*. 124(6):579–591.
- Khan A, Fornes O, Stigliani A, Gheorghie M, Castromondragon JA, Lee RVD, Bessy A, Chèneby J, Kulkarni SR, Tan G, et al. 2017. JASPAR 2018: update of the open-access database of transcription factor binding profiles and its web framework. *Nucleic Acids Res*. 45:e43.
- Labrie V, Buske OJ, Edward O, Jeremian R, Ptak C, Gasiūnas G, Maleckas A, Petereit R, Žvirbliene A, Adamonis K, et al. 2016. Lactase non-persistence is directed by DNA-variation-dependent epigenetic aging. *Nat Struct Mol Biol*. 23(6):566–573.
- Lacey SW, Naim HY, Magness RR, Gething MJ, Sambrook JF. 1994. Expression of lactase-phlorizin hydrolase in sheep is regulated at the RNA level. *Biochem J*. 302(3):929–935.
- Lee HJ, Kim J, Lee T, Son JK, Yoon HB, Baek KS, Jeong JY, Cho YM, Lee KT, Yang BC, et al. 2014. Deciphering the genetic blueprint behind Holstein milk proteins and production. *Genome Biol Evol*. 6(6):1366–1374.

- Li Y, Wu D-D, Boyko AR, Wang G-D, Wu S-F, Irwin DM, Zhang Y-P. 2014. Population variation revealed high altitude adaptation of Tibetan Mastiffs. *Mol Biol Evol.* 31(5):1200–1205.
- Liu YH, Wang L, Xu T, Guo X, Li Y, Yin TT, Yang HC, Yang H, Adeola AC, Sanke OJ, et al. 2018. Whole-genome sequencing of African dogs provides insights into adaptations against tropical parasites. *Mol Biol Evol.* 35(2):287–298.
- Mathieson I, Lazaridis I, Rohland N, Mallick S, Patterson N, Roodenberg SA, Harney E, Stewardson K, Fernandes D, Novak M, et al. 2015. Genome-wide patterns of selection in 230 ancient Eurasians. *Nature* 528(7583):499–503.
- Mulcare CA, Weale ME, Jones AL, Connell B, Zeitlyn D, Tarekegn A, Swallow DM, Bradman N, Thomas MG. 2004. The T allele of a single-nucleotide polymorphism 13.9 kb upstream of the lactase gene (*LCT*) (C–13.9kbT) does not predict or cause the lactase-persistence phenotype in Africans. *Am J Hum Genet.* 74(6):1102–1110.
- Olds LC, Sibley E. 2003. Lactase persistence DNA variant enhances lactase promoter activity in vitro: functional role as a cis regulatory element. *Hum Mol Genet.* 12(18):2333–2340.
- Ollivier M, Tresset A, Bastian F, Lagoutte L, Axelsson E, Arendt M, Bălăşescu A, Marshour M, Sablin M, Salanova L, et al. 2016. Amy2B copy number variation reveals starch diet adaptations in ancient European dogs. *R Soc Open Sci.* 3(11):160449.
- Ostrander EA, Wang G-D, Larson G, vonHoldt BM, Davis BW, Jagannathan V, Hitte C, Wayne RK, Zhang Y-P, Dog10K Consortium, 2019. Dog10K: an international sequencing effort to advance studies of canine domestication, phenotypes and health. *Natl Sci Rev.* 6(4):810–824.
- Perry GH, Dominy NJ, Claw KG, Lee AS, Fiegler H, Redon R, Werner J, Villanea FA, Mountain JL, Misra R, et al. 2007. Diet and the evolution of human amylase gene copy number variation. *Nat Genet.* 39(10):1256–1260.
- Plassais J, Kim J, Davis BW, Karyadi DM, Hogan AN, Harris AC, Decker B, Parker HG, Ostrander EA. 2019. Whole genome sequencing of canids reveals genomic regions under selection and variants influencing morphology. *Nat Commun.* 10(1):1489.
- Sabeti PC, Varilly P, Fry B, Lohmueller J, Hostetter E, Cotsapas C, Xie X, Byrne EH, McCarroll SA, Gaudet R, et al. 2007. Genome-wide detection and characterization of positive selection in human populations. *Nature* 449(7164):913–918.
- Satta Y, Takahata N. 2020. Population genomics on the origin of lactase persistence in Europe and South Asia. bioRxiv 2020.06.30.179432.
- Satta Y, Zheng W, Nishiyama KV, Iwasaki RL, Hayakawa T, Fujito NT, Takahata N. 2020. Two-dimensional site frequency spectrum for detecting, classifying and dating incomplete selective sweeps. *Genes Genet Syst.* 94(6):283–300.
- Sebastio G, Villa M, Sartorio R, Guzzetta V, Poggi V, Auricchio S, Boll W, Mantei N, Semenza G. 1989. Control of lactase in human adult-type hypolactasia and in weaning rabbits and rats. *Am J Hum Genet.* 45(4):489–497.
- Swallow DM. 2003. Genetics of lactase persistence and lactose intolerance. *Annu Rev Genet.* 37:197–219.
- Szpiech ZA, Hernandez RD. 2014. selscan: an efficient multithreaded program to perform EHH-based scans for positive selection. *Mol Biol Evol.* 31(10):2824–2827.
- Tandon RK, Joshi YK, Singhal DS, Narendranathan M, Balakrishnan V, Lal K. 1981. Lactose intolerance in North and South Indians. *Am J Clin Nutr.* 34(5):943–946.
- Tishkoff SA, Reed FA, Ranciaro A, Voight BF, Babbitt CC, Silverman JS, Powell K, Mortensen HM, Hirbo JB, Osman M, et al. 2007. Convergent adaptation of human lactase persistence in Africa and Europe. *Nat Genet.* 39(1):31–40.
- Troelsen JT, Olsen J, Møller J, Sjöström H. 2003. An upstream polymorphism associated with lactase persistence has increased enhancer activity. *Gastroenterology* 125(6):1686–1694.
- Vilà C, Savolainen P, Maldonado JE, Amorim IR, Rice JE, Honeycutt RL, Crandall KA, Lundeberg J, Wayne RK. 1997. Multiple and ancient origins of the domestic dog. *Science* 276(5319):1687–1689.
- Wang GD, Fan R-X, Zhai W, Liu F, Wang L, Zhong L, Wu H, Yang H-C, Wu S-F, Zhu C-L, et al. 2014. Genetic convergence in the adaptation of dogs and humans to the high-altitude environment of the Tibetan plateau. *Genome Biol Evol.* 6(8):2122–2128.
- Wang GD, Larson G, Kidd JM, vonHoldt BM, Ostrander EA, Zhang YP. 2019. Dog10K: the International Consortium of Canine Genome Sequencing. *Natl Sci Rev.* 6(4):611–613.
- Wang GD, Shao X-J, Bai B, Wang J, Wang X, Cao X, Liu Y-H, Wang X, Yin T-T, Zhang S-J, et al. 2019. Structural variation during dog domestication: insights from grey wolf and dhole genomes. *Natl Sci Rev.* 6(1):110–122.
- Wang GD, Zhai W, Yang H-C, Fan R-X, Cao X, Zhong L, Wang L, Liu F, Wu H, Cheng L-G, et al. 2013. The genomics of selection in dogs and the parallel evolution between dogs and humans. *Nat Commun.* 4:1860.
- Wang GD, Zhai W, Yang H-C, Wang L, Zhong L, Liu Y-H, Fan R-X, Yin T-T, Zhu C-L, Poyarkov AD, et al. 2016. Out of southern East Asia: the natural history of domestic dogs across the world. *Cell Res.* 26(1):21–33.
- Wang M-S, Thakur M, Peng M-S, Jiang Y, Frantz LAF, Li M, Zhang J-J, Wang S, Peters J, Otecko NO, et al. 2020. 863 genomes reveal the origin and domestication of chicken. *Cell Res.* 30(8):693–701.
- Wang YG, Yan YS, Xu JJ, Du RF, Flatz SD, Kühnau W, Flatz G. 1984. Prevalence of primary adult lactose malabsorption in three populations of northern China. *Hum Genet.* 67(1):103–106.
- Wu D-D, Yang C-P, Wang M-S, Dong K-Z, Yan D-W, Hao Z-Q, Fan S-Q, Chu S-Z, Shen Q-S, Jiang L-P, et al. 2020. Convergent genomic signatures of high-altitude adaptation among domestic mammals. *Natl Sci Rev.* 7(6):952–963.