




Eukaryotic Microbial Communities in Japanese Arable Andisols Investigated by Amplicon Sequencing of 18S rRNA Genes

 Kazumori Mise,^{a,b} Shigeto Otsuka^{a,c}

^aDepartment of Applied Biological Chemistry, Graduate School of Agricultural and Life Sciences, the University of Tokyo, Tokyo, Japan

^bDepartment of Biological Sciences, Graduate School of Science, the University of Tokyo, Tokyo, Japan

^cCollaborative Research Institute for Innovative Microbiology, the University of Tokyo, Tokyo, Japan

ABSTRACT Compared with the well-studied soil prokaryotic communities, little is known about soil eukaryotic communities. Here, we investigated the eukaryotic community structures in 43 arable soils using amplicon sequencing of 18S rRNA genes. Major taxonomic groups, such as Fungi, Holozoa, and Stramenopiles, were detected in all samples.

Recent developments in high-throughput sequencing have unveiled soil microbial community structures in detail. While numerous studies have reported prokaryotic community structures in soil (1), much less is known about eukaryotic communities. Nevertheless, eukaryotic microbes play vital roles in the soil ecosystem; they drive biogeochemical cycling (2), prey on prokaryotes (3), and are potential plant pathogens (4). To fill this knowledge gap, we investigated eukaryotic community structures in Japanese arable soils by using well-established 18S rRNA gene amplicon sequencing.

Details on the soil sampling have previously been reported (5). Briefly, 43 arable Andisols sampled from 11 regions in Japan (32.9° to 43.0°, 130.7° to 143.3°) were investigated. For each region, soil was sampled from one to six (different) cropland field(s). They included both fallow ($n = 7$) and planted soils ($n = 36$), with various crop rotations and fertilization regimes. Collected soil samples were sieved through 2-mm mesh and stored at -30°C . DNA was extracted from 400 to 500 mg of soil using a FastDNA spin kit for soil (Qbiogene, Carlsbad, CA, USA) following the manufacturer's protocol, with a modification that a casein solution (2% [wt/vol]; pH adjusted to 8.0 with 300 mM sodium phosphate buffer) was added to mitigate DNA adsorption to soil minerals (6). The partial sequences of 18S rRNA genes, typically 100 to 150 bases long, were amplified using the fusion primers Euk1391f and EukBr (7, 8) that incorporated index and Illumina adaptor sequences. PCR conditions included an initial 3 minutes of denaturation at 72°C , followed by 25 cycles of denaturation (94°C , 30 s), annealing (57°C , 45 s), and extension (72°C , 1 min). The amplicons were purified by electrophoresis in agarose gels with subsequent reextraction from the gel using the Wizard SV gel and PCR cleanup system (Promega, Madison, WI, USA). The amplicon libraries from all samples were mixed in equimolar amounts and sequenced on a MiSeq instrument (Illumina, CA, USA), generating 150-bp paired-end reads. Paired-end reads with >20 bases of overlapping regions were merged, and low-quality sequences with expected errors of 0.5 bases or more were eliminated using USEARCH v11.0.667 (9). In cases where one read goes beyond the beginning (5' end) of the opposite read, the exceeded regions were trimmed. Furthermore, merged sequences falling beyond the range of 100 to 150 bases long (8) were discarded. Sequences passing these filtering steps were taxonomically annotated using naive Bayesian classifier (NBC) implemented in QIIME v1.9.1 (10, 11), trained with SILVA v132 (12), and optimized for NBC (https://www.arb-silva.de/fileadmin/silva_databases/qiime/Silva_132_release.zip), with a bootstrap confidence value threshold of 0.5. Potential plant-derived sequences (i.e., sequences annotated as Chloroplastida) and unannotated sequences were discarded.

Citation Mise K, Otsuka S. 2020. Eukaryotic microbial communities in Japanese arable Andisols investigated by amplicon sequencing of 18S rRNA genes. *Microbiol Resour Anounc* 9:e00218-20. <https://doi.org/10.1128/MRA.00218-20>.

Editor Jason E. Stajich, University of California, Riverside

Copyright © 2020 Mise and Otsuka. This is an open-access article distributed under the terms of the [Creative Commons Attribution 4.0 International license](https://creativecommons.org/licenses/by/4.0/).

Address correspondence to Kazumori Mise, mise-33@bs.s.u-tokyo.ac.jp.

Received 2 March 2020

Accepted 16 May 2020

Published 4 June 2020

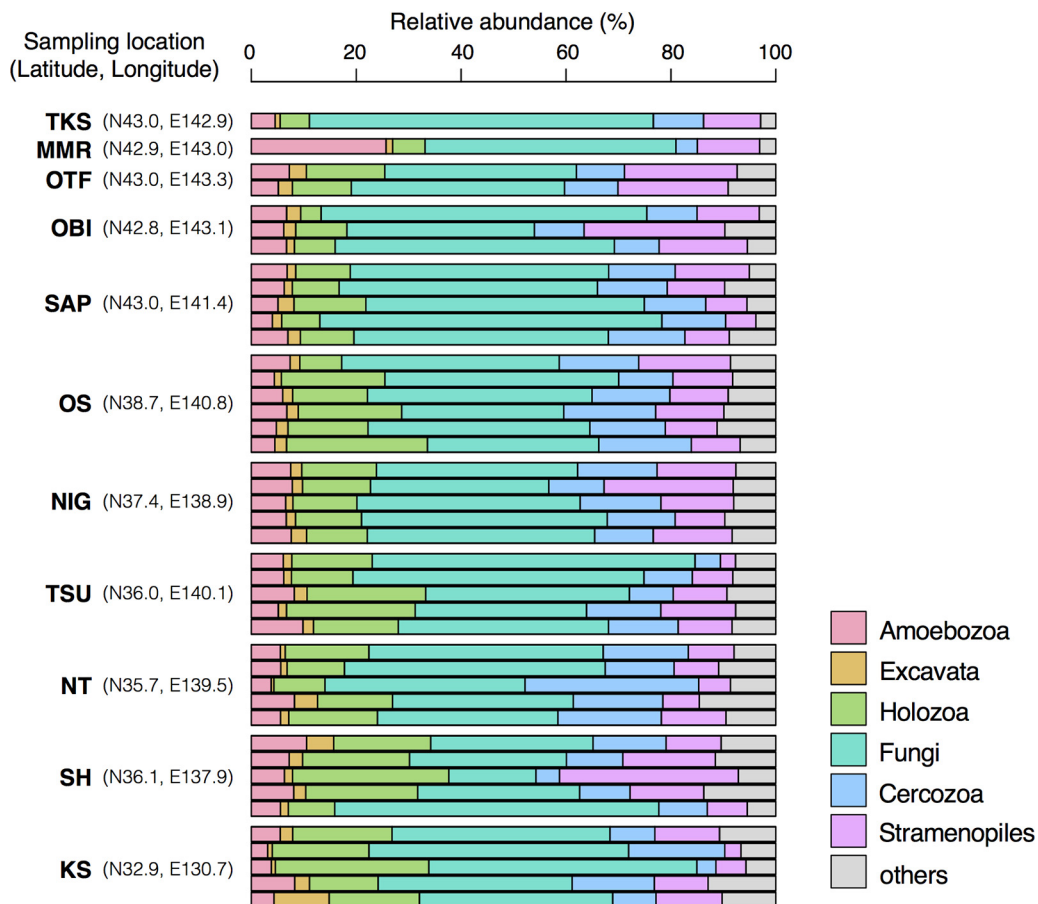


FIG 1 Community structures of eukaryotic microbes in 43 Japanese arable Andisols based on 18S rRNA gene sequencing. Sampling locations of the sequenced soil samples are indicated on the left. Detailed information on each sample is available in a previous report (5). Abbreviations: TKS, Tokachi-Shimizu; MMR, Memuro; OTF, Otofuke; OBI, Obihiro; SAP, Sapporo; OS, Osaka; NIG, Niigata; TSU, Tsukuba; NT, Nishi-Tokyo; SH, Shiojiri; KS, Koshi.

Within the total 2,053,072 high-quality sequences, 1,595,038 (77.7%) were successfully annotated (37,093 sequences per sample on average). Dominant taxonomic clades included Fungi (43.3% ± 10.6%, mean ± SD), Holozoa (14.7% ± 6.13%), Stramenopiles (12.4% ± 6.13%), Cercozoa (12.4% ± 5.06%), Amoebozoa (6.71% ± 3.36%), and Excavata (2.20% ± 1.57%) (Fig. 1).

Data availability. The amplicon sequence data have been deposited in DDBJ/ENA/GenBank under the accession number [PRJDB6544](https://doi.org/10.1093/bioinformatics/btad001) and also under [DRA009572](https://doi.org/10.1093/bioinformatics/btad001).

ACKNOWLEDGMENTS

This work was financially supported by JSPS KAKENHI 26292035.

We thank Keishi Senoo (The University of Tokyo), Takashi Kunito (Shinshu University), and Kazunari Nagaoka (NARO Agricultural Research Institute) for supporting this study.

REFERENCES

1. Fierer N. 2017. Embracing the unknown: disentangling the complexities of the soil microbiome. *Nat Rev Microbiol* 15:579–590. <https://doi.org/10.1038/nrmicro.2017.87>.
2. Chen H, Mothapo NV, Shi W. 2014. The significant contribution of fungi to soil N₂O production across diverse ecosystems. *Appl Soil Ecol* 73: 70–77. <https://doi.org/10.1016/j.apsoil.2013.08.011>.
3. Murase J, Frenzel P. 2008. Selective grazing of methanotrophs by protozoa in a rice field soil. *FEMS Microbiol Ecol* 65:408–414. <https://doi.org/10.1111/j.1574-6941.2008.00511.x>.
4. Dean R, Van Kan JAL, Pretorius ZA, Hammond-Kosack KE, Di Pietro A, Spanu PD, Rudd JJ, Dickman M, Kahmann R, Ellis J, Foster GD. 2012. The top 10 fungal pathogens in molecular plant pathology. *Mol Plant Pathol* 13:414–430. <https://doi.org/10.1111/j.1364-3703.2011.00783.x>.
5. Mise K, Fujita K, Kunito T, Senoo K, Otsuka S. 2018. Phosphorus-mineralizing communities reflect nutrient-rich characteristics in Japanese arable Andisols. *Microbes Environ* 33:282–289. <https://doi.org/10.1264/jsme2.ME18043>.
6. Saeki K, Sakai M, Kunito T. 2012. Effect of α-casein on DNA adsorption by

- Andosols and by soil components. *Biol Fertil Soils* 48:469–474. <https://doi.org/10.1007/s00374-011-0640-7>.
7. Stoeck T, Bass D, Nebel M, Christen R, Jones MDM, Breiner H-W, Richards TA. 2010. Multiple marker parallel tag environmental DNA sequencing reveals a highly complex eukaryotic community in marine anoxic water. *Mol Ecol* 19:21–31. <https://doi.org/10.1111/j.1365-294X.2009.04480.x>.
 8. Amaral-Zettler LA, McCliment EA, Ducklow HW, Huse SM. 2009. A method for studying protistan diversity using massively parallel sequencing of V9 hypervariable regions of small-subunit ribosomal RNA genes. *PLoS One* 4:e6372. <https://doi.org/10.1371/journal.pone.0006372>.
 9. Edgar RC. 2010. Search and clustering orders of magnitude faster than BLAST. *Bioinformatics* 26:2460–2461. <https://doi.org/10.1093/bioinformatics/btq461>.
 10. Wang Q, Garrity GM, Tiedje JM, Cole JR. 2007. Naive Bayesian classifier for rapid assignment of rRNA sequences into the new bacterial taxonomy. *Appl Environ Microbiol* 73:5261–5267. <https://doi.org/10.1128/AEM.00062-07>.
 11. Caporaso JG, Kuczynski J, Stombaugh J, Bittinger K, Bushman FD, Costello EK, Fierer N, Peña AG, Goodrich JK, Gordon JI, Huttley GA, Kelley ST, Knights D, Koenig JE, Ley RE, Lozupone CA, McDonald D, Muegge BD, Pirrung M, Reeder J, Sevinsky JR, Turnbaugh PJ, Walters WA, Widmann J, Yatsunenko T, Zaneveld J, Knight R. 2010. QIIME allows analysis of high-throughput community sequencing data. *Nat Methods* 7:335–336. <https://doi.org/10.1038/nmeth.f.303>.
 12. Quast C, Pruesse E, Yilmaz P, Gerken J, Schweer T, Yarza P, Peplies J, Glöckner FO. 2013. The SILVA ribosomal RNA gene database project: improved data processing and Web-based tools. *Nucleic Acids Res* 41:D590–D596. <https://doi.org/10.1093/nar/gks1219>.