

Research article

Open Access

BMP-6 promotes E-cadherin expression through repressing δ EF1 in breast cancer cells

Shuang Yang¹, Jun Du¹, Zhaoqi Wang¹, Wei Yuan¹, Yuhuan Qiao¹, Ming Zhang¹, Jie Zhang¹, Songyuan Gao², Jian Yin², Baocun Sun² and Tianhui Zhu*¹

Address: ¹Medical College of Nankai University, Tianjin, China and ²Tianjin Medical University Cancer Institute and Hospital, Tianjin, China

Email: Shuang Yang - yangshuang@nankai.edu.cn; Jun Du - nkdujun@gmail.com; Zhaoqi Wang - zhqiawang@mail.nankai.edu.cn; Wei Yuan - zryw2002@yahoo.com.cn; Yuhuan Qiao - yhqiao@nankai.edu.cn; Ming Zhang - zhangming1981@gmail.com; Jie Zhang - zhangjie10101@yahoo.com.cn; Songyuan Gao - liena1020@126.com; Jian Yin - healthyin@medmail.com.cn; Baocun Sun - baocunsun@eyou.com; Tianhui Zhu* - zhuth@nankai.edu.cn

* Corresponding author

Published: 13 November 2007

Received: 13 April 2007

BMC Cancer 2007, 7:211 doi:10.1186/1471-2407-7-211

Accepted: 13 November 2007

This article is available from: <http://www.biomedcentral.com/1471-2407/7/211>

© 2007 Yang et al; licensee BioMed Central Ltd.

This is an Open Access article distributed under the terms of the Creative Commons Attribution License (<http://creativecommons.org/licenses/by/2.0>), which permits unrestricted use, distribution, and reproduction in any medium, provided the original work is properly cited.

Abstract

Background: Bone morphogenetic protein-6 (BMP-6) is critically involved in many developmental processes. Recent studies indicate that BMP-6 is closely related to tumor differentiation and metastasis.

Methods: Quantitative RT-PCR was used to determine the expression of BMP-6, E-cadherin, and δ EF1 at the mRNA level in MCF-7 and MDA-MB-231 breast cancer cells, as well as in 16 breast cancer specimens. Immunoblot analysis was used to measure the expression of δ EF1 at the protein level in δ EF1-overexpressing and δ EF1-interfered MDA-MB-231 cells. Luciferase assay was used to determine the rhBMP-6 or δ EF1 driven transcriptional activity of the E-cadherin promoter in MDA-MB-231 cells. Quantitative CHIP assay was used to detect the direct association of δ EF1 with the E-cadherin proximal promoter in MDA-MB-231 cells.

Results: MCF-7 breast cancer cells, an ER⁺ cell line that expressed high levels of BMP-6 and E-cadherin exhibited very low levels of δ EF1 transcript. In contrast, MDA-MB-231 cells, an ER⁻ cell line had significantly reduced BMP-6 and E-cadherin mRNA levels, suggesting an inverse correlation between BMP-6/E-cadherin and δ EF1. To determine if the same relationship exists in human tumors, we examined tissue samples of breast cancer from human subjects. In 16 breast cancer specimens, the inverse correlation between BMP-6/E-cadherin and δ EF1 was observed in both ER⁺ cases (4 of 8 cases) and ER⁻ cases (7 of 8 cases). Further, we found that BMP-6 inhibited δ EF1 transcription, resulting in an up-regulation of E-cadherin mRNA expression. This is consistent with our analysis of the E-cadherin promoter demonstrating that BMP-6 was a potent transcriptional activator. Interestingly, ectopic expression of δ EF1 was able to block BMP-6-induced transactivation of E-cadherin, whereas RNA interference-mediated down-regulation of endogenous δ EF1 in breast cancer cells abolished E-cadherin transactivation by BMP-6. In addition to down-regulating the expression of δ EF1, BMP-6 also physically dislodged δ EF1 from E-cadherin promoter to allow the activation of E-cadherin transcription.

Conclusion: We conclude that repression of δ EF1 plays a key role in mediating BMP-6-induced transcriptional activation of E-cadherin in breast cancer cells. Consistent with the fact that higher level of δ EF1 expression is associated with more invasive phenotype of breast cancer cells, our collective data suggests that δ EF1 is likely the switch through which BMP-6 restores E-cadherin-mediated cell-to-cell adhesion and prevents breast cancer metastasis.

Background

Breast cancer is the most common neoplasm in women. The unique histological features of breast cancer are prominent proliferation of epithelial cells and the formation of ectopic mesenchymal tissue, including cartilage and bone, especially in complex adenomas and benign mixed tumors [1,2]. The association between loss or down-regulation of E-cadherin, an epithelial cell-cell adhesion protein, and progression of breast cancer has been extensively documented [3,4]. Tumor cells acquire invasive properties when E-cadherin-mediated adhesion is inhibited [5,6]. In line with these findings, ectopic expression of E-cadherin in a transgenic mouse model prevented tumor cell invasion and metastasis [7]. Several epigenetic mechanisms are implicated in E-cadherin loss during breast cancer, including hypermethylation of the E-cadherin promoter region at CpG islands [8] and transrepression by specific transcriptional factors. Several zinc finger transcription factors, such as Twist [9,10], Snail1 [11-14], Snail2 [15,16], SIP1 [17], and E12/E47 [16], have been found to bind to the E-box elements in the proximal E-cadherin promoter and repress its transcription. Moreover, a few factors, including ErbB2 [18], TGF- β [19], and estrogen [20], were reported to regulate E-cadherin expression.

Bone morphogenetic protein-6 (BMP-6), a member of TGF- β superfamily, has been characterized as a multifunctional molecule with a distinct ability to induce ectopic cartilage and bone formation [1,21]. *In vitro*, BMP-6 inhibits cell division, promotes cell differentiation, induces ectopic bone formation, and regulates epithelial-mesenchymal interaction [21-24]. Furthermore, a number of recent studies have shown that BMP-6 expression is associated with progression of tumorigenesis. BMP-6 is detected in several human neoplastic epithelial cells including breast, prostate, salivary, rectal, and thyroid carcinomas, and is speculated to be closely associated with tumor metastasis [21,25-29].

δ EF1, a member of the zinc finger-homeodomain family of transcription factors [30,31], was originally identified as a binding protein of the lens-specific δ 1-crystallin enhancer in chicken [32]. Studies revealed that δ EF1 is a widely expressed transcriptional repressor, working through its zinc finger clusters binding to consensus E-box-like sequences, 5'-CA(G/C)(G/C)TG-3' [33-35]. Several recently reported properties mark δ EF1 as a potential regulatory factor in various cellular processes during tumor progression. In lung and breast tumor cells, δ EF1 has been implicated in epithelial to mesenchymal transition (EMT) [36-38], a process associated with tumor metastasis [39]. Moreover, δ EF1 can itself be regulated by hormones in target tissues [40-42]. In one example, δ EF1 is up-regulated by estrogen in the chick oviduct and is

responsible for estrogen-mediated regulation of the ovalbumin gene [40,41,43]. In human T47D breast carcinoma cells, δ EF1 is up-regulated by progesterone via both isoforms of the progesterone receptor (PR) [42].

In this communication, we report that BMP-6 up-regulates the expression of E-cadherin at the mRNA level in breast cancer cells, determined by quantitative RT-PCR and luciferase assay. We demonstrate that this effect is a direct result of BMP-6-induced down-regulation of δ EF1. The inverse relationship between BMP-6/E-cadherin and δ EF1 were validated in 16 breast cancer specimens using quantitative RT-PCR. This finding contributes significantly to our understanding of the potential role of BMP-6 and δ EF1 in breast tumorigenesis and metastasis.

Methods

Tumor Samples

Fresh breast cancer tissues of invasive ductal carcinoma (stage II) were obtained from the Tissue Banking Facility Jointly Supported by TMUCIH (Tianjin Medical University Cancer Institute and Hospital) & NFCR (National Foundation for Cancer Research). The pathological stage and nodal status were obtained from the primary pathology reports. The patients (8 ER positive and 8 ER negative) had a mean age of 52.8 ± 12.1 years and were recruited in the same department. This study was approved by the institutional ethics committee.

Cell Culture

MCF-7 and MDA-MB-231 cells were maintained in DMEM-high glucose medium (GIBCO BRL, Grand Island, NY, USA) supplemented with 10% FBS (Hyclone, Logan, Utah, USA), penicillin, and streptomycin according to the recommendations of the American Type Culture Collection (ATCC). MDA-MB-231 cells were plated at a density of 2×10^4 cells/well in 24-well plates and 8×10^4 in 6-well plates for use in quantitative RT-PCR and luciferase assays, respectively. The cells were cultured in the presence or absence of 200 ng/ml rhBMP-6 (R&D Systems, Minneapolis, MN, USA) in DMEM supplemented with 5% FBS.

Plasmid Constructs

cDNA fragment encoding the full-length δ EF1 sequence was prepared by PCR using the forward primer, 5'-CGCG-GATCCAGGATCATGGCGGATGGC-3', and reverse primer, 5'-GAACCTCGAGCGAGCTTCATTTGTCT-TCTCTTC-3'. The PCR products were digested with BamHI/XhoI, and cloned into pCDNA6B (Life Technologies, Grand Island, NY, USA). The E-cadherin promoter sequence (-308/+21) was obtained by PCR from human blood genomic DNA and cloned into the pGL4.10 vector (Promega, Madison, WI, USA) as described by Comijn et al. [17]. Mutagenesis of the δ EF1 sites in the human E-cadherin promoter was performed using the QuickChange

Site-Directed Mutagenesis Kit (Stratagene, La Jolla, CA, USA) with the forward primer E2 box 1: 5'-gctgtggccggCAGATGaaccctcag-3' and reverse primer E2 box 1: 5'-ctgagggtCATCT Gccggccacagc-3'; forward primer E2 box 3: 5'-gctccgggctCATCTGgctgcag c-3' and reverse primer E2 box 3: 5'-gctgcagcCAGATGagccccggagc-3', as described by Comijn et al. [17].

RNA Extraction and Quantitative RT-PCR

Total RNA was extracted from MCF-7 and MDA-MB-231 cells treated with or without 200 ng/ml rhBMP-6 for various times or from 16 breast cancer specimens using the TRIzol Reagent (Life Technologies, Grand Island, NY, USA). Total RNA (0.5 µg) from each sample was used for first strand cDNA synthesis (M-MLV Reverse Transcriptase, Promega, Madison, WI, USA). Specific products of human δ EF1, human E-cadherin, and human BMP-6 were amplified by quantitative PCR using the following primers: δ EF1, 5'-GGCCCCAGGTGTAAGCGC-3' (forward), and 5'-CAGGCCCCAGGATTTCTTG C-3' (reverse); E-cadherin, 5'-TGCTGCAGGTCTCCTCTTGG-3' (forward), and 5'-AGT CCCAGGCGTAGACCAAG-3' (reverse); BMP-6, 5'-CAACAGAGTCGTAATCA-3' (forward), and 5'-TTAGTGGCATCCACAAGCTCT-3' (reverse). GAPDH was used as an internal control. Verification of the expression levels of genes was performed by quantitative RT-PCR using EvaGreen (Botium, Hayward, CA, USA). The expression level was expressed as the threshold cycle (C_T) values of the target and reference gene-GAPDH, which is constitutively expressed and not regulated by treatment with rhBMP-6. Comparison and calculation of C_T values was used to determine the relative mRNA expression expressed as the fold change of target genes relative to the reference gene.

Antibodies

The following antibodies (Abs) were used: mouse monoclonal Ab against c-Myc (sc-40, Santa Cruz Biotechnology, CA, USA); goat polyclonal Ab against the N-terminal epitope of δ EF1 (ZEB-E20, Santa Cruz Biotechnology, CA, USA); a mouse monoclonal Ab against E-cadherin (610181, BD Transduction Laboratories, KY, USA); and a mouse monoclonal Ab against FLAG-M2 (F-3165, Sigma, MO, USA).

Western Immunoblot Analysis

MDA-MB-231 cells were solubilized in lysis buffer (50 mM Tris-HCl pH 7.5, 150 mM NaCl, 1% Triton \times -100, 0.5% sodium deoxycholate) supplemented with aprotinin (10 µg/ml), leupeptin (10 µg/ml), and PMSF (1 mM). The lysates were cleared by centrifugation and the protein concentrations were determined using the BCA Protein Assay Kit (Pierce, Rockford, IL, USA). Proteins were separated by SDS-PAGE and transferred onto nitrocellulose membranes (Amersham Biosciences, Piscata-

way, NJ, USA). Western blotting was performed using standard techniques and immunoreactive bands were detected by chemiluminescence (ECL, Amersham Biosciences, Piscataway, NJ, USA).

Luciferase Assay

MDA-MB-231 cells were co-transfected with wild-type or mutant human E-cadherin promoter constructs and different amounts of δ EF1 expression plasmids (1.5, 3.0, and 6.0 µg/well) in 6-well plates using Lipofectamine 2000 (Invitrogen, Austin, TX, USA). Cells were treated with rhBMP-6 (200 ng/ml) for 24 h after transfection. Lysates were prepared 24 h after treatment. The luciferase activity was then measured using the Dual-Luciferase Reporter Assay System (Promega, Madison, WI, USA) according to the manufacturer's instructions. Luciferase activity was normalized using the Renilla luciferase activity.

Preparation of small interfering RNAs and Transfection

The target sequence of the siRNA is 5'-TGATCAGCCTCAATCTGCA-3' for human δ EF1 as previously reported [36]. The sense and antisense oligonucleotides with the internal loop were synthesized (TaKaRa, Shiga, Japan). These were annealed and ligated into the BamHI and HindIII sites of pSilencer 4.1-CMVneo (Ambion, Carlsbad, CA, USA) to construct the δ EF1-specific siRNA expression plasmid according to the manufacturer's instructions. pSilencer 4.1-CMVneo expressing a scrambled siRNA (Ambion, Carlsbad, CA, USA) was used as a control. Transient transfection with siRNAs was performed with Lipofectamine 2000 (Invitrogen, Austin, TX, USA) in MDA-MB-231 cells. G418-resistant clones were isolated over a period of 3–4 weeks. Down-regulation of δ EF1 was confirmed by western immunoblot analysis.

Quantitative CHIP Assays

MDA-MB-231 cells were grown for 24 h up to 80% confluence in the presence or absence of 200 ng/ml rhBMP-6. Cells were cross-linked with 1% formaldehyde and processed using the Chromatin Immunoprecipitation (ChIP) Assay Kit (Updates, Lake Placid, NY, USA). The following antibodies (10 µg) were used: anti-ZEB, a polyclonal antibody raised against N-terminal epitopes of δ EF1, or unrelated anti-FLAG control antibody (F-3165, Sigma, MO, USA) with 100 µg of chromatin per CHIP. Purified immunoprecipitated DNA was used for quantitative PCR reactions. The primers used for this analysis were as follows: 5'-AGGCTAGAGGGTCACCGCGTC-3' (forward), and 5'-GCTTTGCAGTCCGACGCCAC-3' (reverse). Copy numbers for the DNA fragments (-175 to +21) of E-cadherin promoter in each anti-ZEB sample with or without BMP-6 induction were determined and compared to copy numbers of the DNA fragment without IP (input DNA). Anti-FLAG antibody was used as a control for IP reactions. The percentage of the input was then calculated. The final

value was the percentage input obtained with specific antibody minus the percentage input obtained with anti-FLAG control antibody. The dissociation curve was determined for each quantitative PCR to ensure that a single band was produced. Each data point represents three independent samples.

Results

Expression levels of BMP-6 and E-cadherin are inversely related to that of δ EF1 in breast cancer cell lines and in clinical breast cancer specimens

MCF-7 and MDA-MB-231 breast cancer cells feature different capacities for invasiveness and metastasis *in vivo* and, as such, have been intensively used as tumor models during past few years [44]. Our preliminary studies indicated that expressions of BMP-6 and δ EF1 were inversely related in MCF-7 and MDA-MB-231 cells. MDA-MB-231

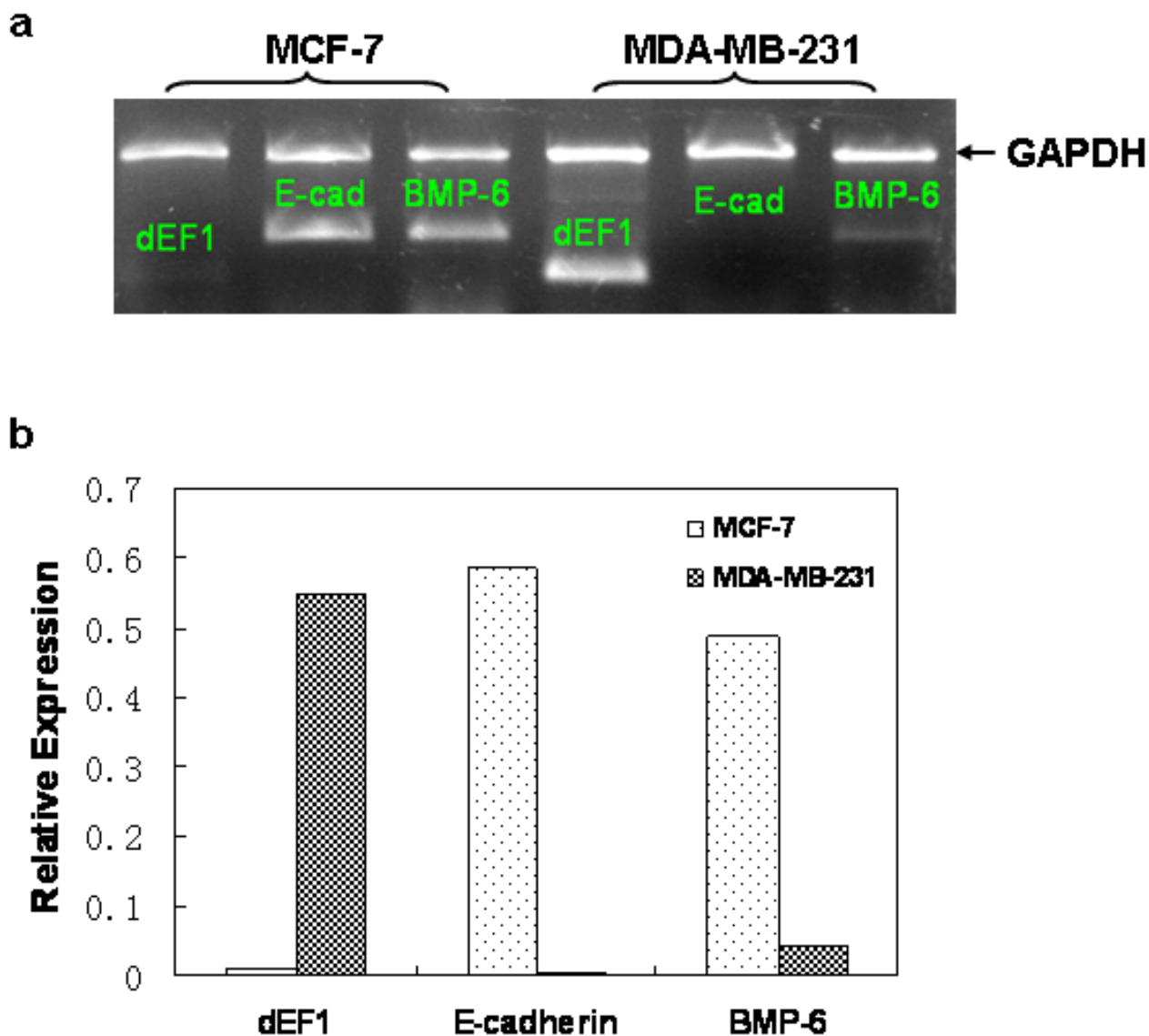


Figure 1
Expression of BMP-6, E-cadherin, and δ EF1 in MCF-7 and MDA-MB-231 breast cancer cells is inversely correlated. (a) Transcript levels of BMP-6, E-cadherin, and δ EF1 in MCF-7 and MDA-MB-231 breast cancer cells were detected by RT-PCR analysis. GAPDH was used as an internal control. (b) The agarose gel electrophoresis data was quantified by UV band scanning. Data represent three independent experiments.

cells, which express high level of δ EF1 mRNA, exhibited very low level of BMP-6 (Figure 1). In contrast, MCF-7 cells had markedly reduced δ EF1 mRNA levels (Figure 1). Moreover, δ EF1 has recently been identified as a direct transcriptional repressor of E-cadherin in these cancer cells [36]. We therefore performed RT-PCR to examine the expression of E-cadherin in MCF-7 and MDA-MB-231 cells. Consistent with the previously reported results [13,36], E-cadherin mRNA expression was high in MCF-7 cells, but undetectable in MDA-MB-231 cells (Figure 1).

After establishing the relationship between BMP-6, E-cadherin, and δ EF1 in cancer cell lines, we moved on to validate this finding in breast cancer tissue samples. We collected 16 tumor specimens (T1–T8 were ER positive and T9–16 were ER negative) and analyzed their relative mRNA levels using quantitative RT-PCR. As shown in Figure 2b, an inverse correlation between BMP-6/E-cadherin and δ EF1 is clearly evident in ER- cancer specimens (7 out of 8: T9, T10, T11, T13, T14, T15, T16). Only in T12 was the low δ EF1 level not accompanied by an increased level of E-cadherin/BMP-6. In ER+ cancer specimens, a clear inverse correlation was evident in T1, T3, T7, and T8 (Figure 2a). However, in the other ER+ tumor samples such an inverse correlation was not as evident. In addition, our results revealed that expression of BMP-6 in ER+ breast tumor specimens was comparatively higher than in ER- cases. However, for expression of δ EF1 in ER+ and ER- breast tumor specimens, this relationship was reversed; here ER+ tumors had lower δ EF1 mRNA levels than ER-. Together, these data suggest a strong inverse relationship between the expressions of BMP-6/E-cadherin and δ EF1, which could contribute to the invasiveness and metastatic capacity of breast cancer cells.

BMP-6 down-regulated δ EF1 and concurrently promoted E-cadherin transcription in breast cancer cells

To assess whether a loss of E-cadherin expression in MDA-MB-231 cells is related to the presence of δ EF1 suppression as well as a deficiency of BMP-6, the cells were cultured in the presence or absence of rhBMP-6. Total RNA was extracted at 0, 3, 12, 24, 48, 72, and 96 h following BMP-6 treatment. Quantitative RT-PCR analysis demonstrated that BMP-6 treatment for 72 h resulted in an up to 60% decrease in the expression of δ EF1 mRNA, compared to the basal level (Figure 3a). Meanwhile, BMP-6 treatment for 96 h increased the expression of E-cadherin more than 8-fold over the level at baseline (Figure 3b). In the sequence of time, the BMP-6-induced down-regulation of δ EF1 transcription occurred at as early as 3 h; whereas up-regulation of E-cadherin was observed only after 12 h of BMP-6 induction (Figure 3a and 3b), suggesting that BMP-6-induced down-regulation of δ EF1 may well be a pre-requisite to allow the expression of E-cadherin.

To verify these findings, western blot was performed to determine BMP-6-modulated expression of δ EF1 and E-cadherin at the protein level. This time, MDA-MB-231 cells were cultured in the presence or absence of 200 ng/ml rhBMP-6 and total protein lysates were collected at 24 and 48 h following treatment. Western blot analysis revealed that BMP-6 treatment for 48 h significantly reduced the level of δ EF1 protein (Figure 3c) with the expression of E-cadherin being up-regulated concurrently (Figure 3d).

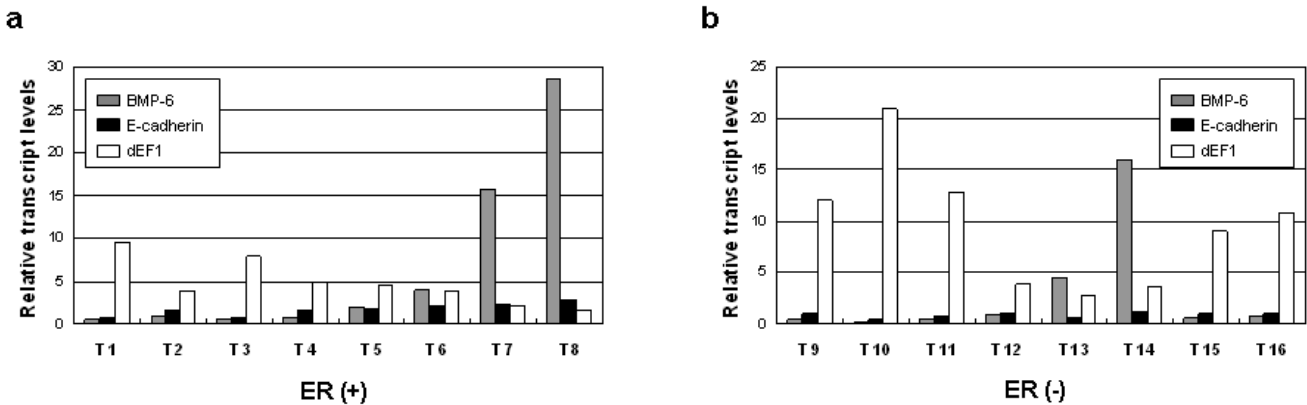


Figure 2
Relative expression levels of BMP-6, E-cadherin, and δ EF1 in 16 breast cancer specimens. Transcript levels of the three genes were determined in tumor samples from 16 breast cancer specimens by quantitative RT-PCR. GAPDH was used to normalize the individual expression levels.

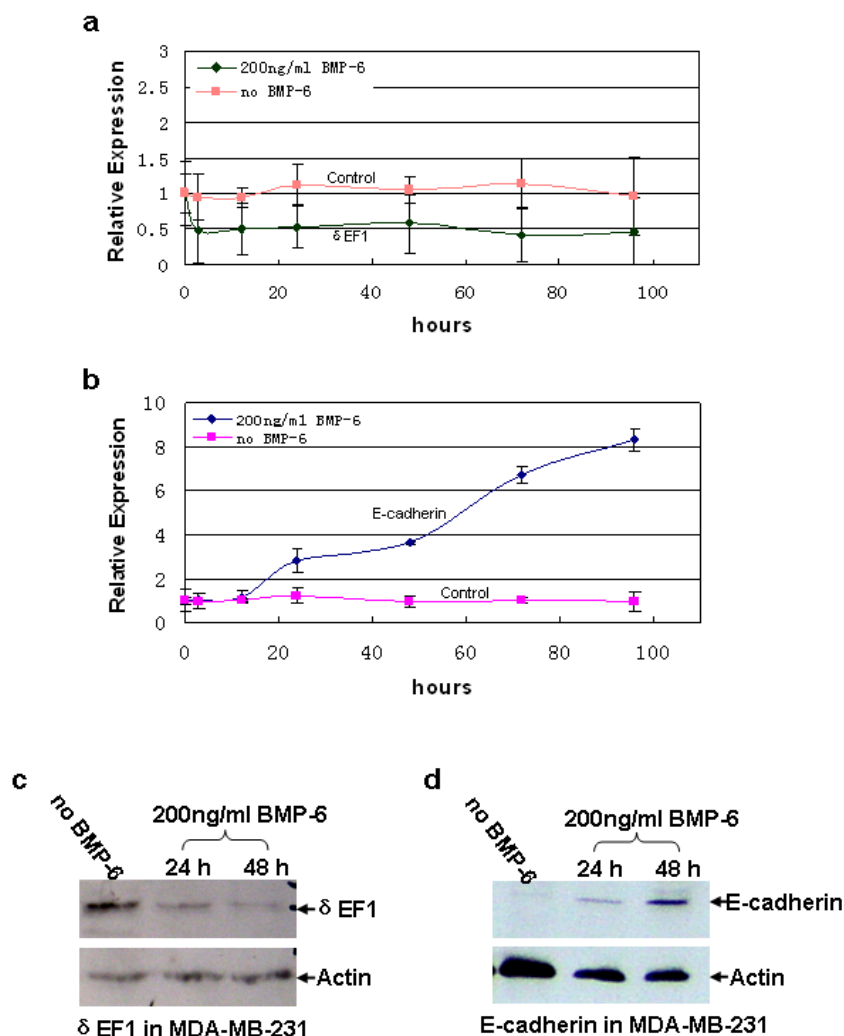


Figure 3

BMP-6 down-regulates δ EF1 and concurrently up-regulates E-cadherin transcription in MDA-MB-231 breast cancer cells.

(a) BMP-6-induced (200 ng/ml) down-regulation of δ EF1 mRNA in MDA-MB-231 cells was verified by quantitative RT-PCR. GAPDH was used to normalize the δ EF1 level. Data represent three independent experiments. (b) BMP-6-induced (200 ng/ml) up-regulation of E-cadherin mRNA in MDA-MB-231 cells was verified by quantitative RT-PCR. GAPDH was used to normalize the E-cadherin level. Data represent three independent experiments. (c) Western blot with anti-ZEB antibody showing δ EF1 expression in MDA-MB-231 cells after culture for 24 or 48 h with BMP-6 (200 ng/ml). Actin expression was used as an internal control. (d) Western blot with anti-E-cadherin antibody showing E-cadherin expression in MDA-MB-231 cells after culture for 24 or 48 h with BMP-6 (200 ng/ml). Actin expression was used as an internal control.

BMP-6-induced transcription of endogenous E-cadherin was suppressed by δ EF1 in MDA-MB-231 cells

With the knowledge that BMP-6 represses δ EF1 transcription and causes up-regulation of E-cadherin in MDA-MB-231 cells, we moved on to examine whether BMP-6 is a *bona fide* stimulator of E-cadherin expression in MDA-MB-231 cells using reporter gene assays. The study showed that BMP-6 significantly stimulated E-cadherin promoter activity of the wild-type -308/+21 reporter gene, com-

pared to the empty-vector transfected control cells (Figure 4b, lane 1 verse 2). Furthermore, we examined whether δ EF1 overexpression could repress the BMP-6-induced transcriptional activation of E-cadherin. MDA-MB-231 cells were co-transfected with E-cadherin promoter reporter and δ EF1 expression plasmid in the presence of rhBMP-6. Overexpression of δ EF1 was confirmed by western blot (Figure 4a). As anticipated, δ EF1 expression significantly inhibited the promoter activity of E-cadherin

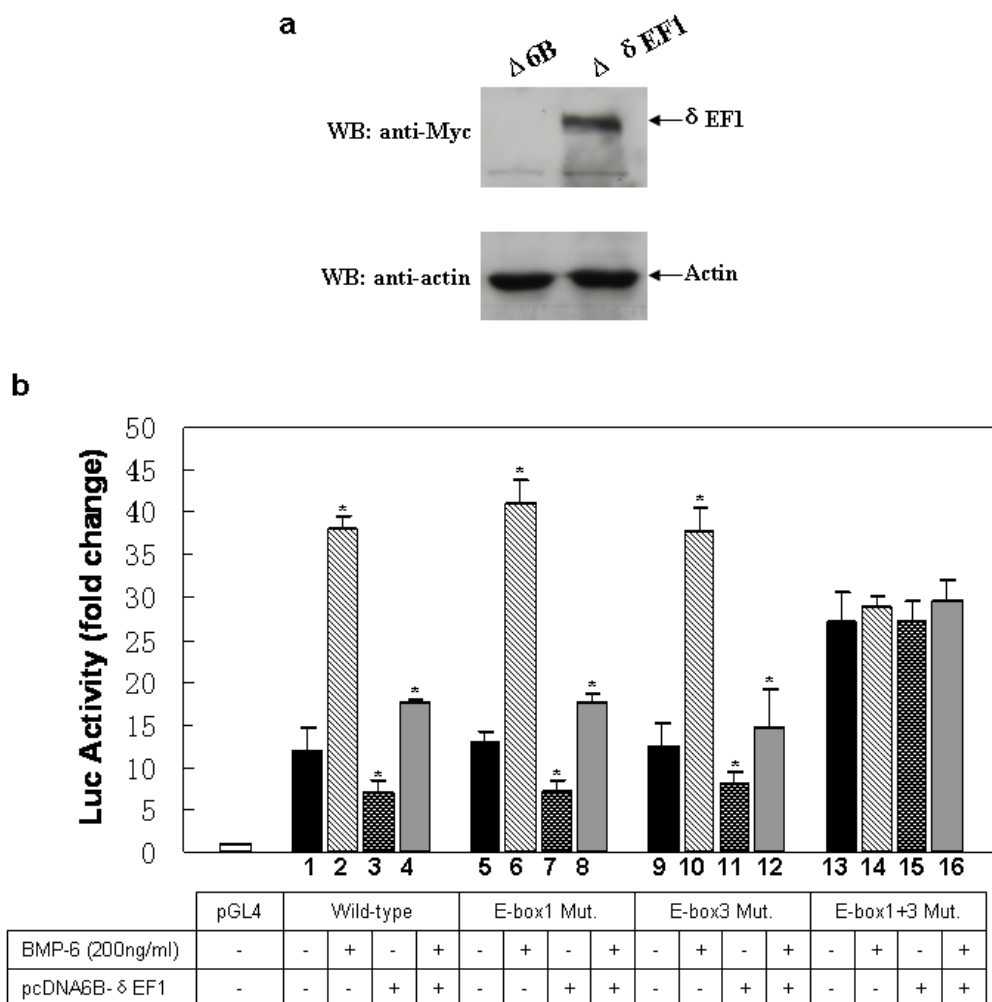


Figure 4
Ectopic expression of δ EF1 is sufficient to attenuate BMP-6-induced transactivation of the E-cadherin in MDA-MB-231 breast cancer cells. (a) Western blot with anti-myc antibody was performed to show δ EF1-myc expression in MDA-MB-231 (Δ 6B) and MDA-MB-231 (Δ δ EF1) cells. Actin was used as a loading control. (b) MDA-MB-231 cells on a 6-well plate were co-transfected with a δ EF1 expression plasmid (2 μ g/well) and luciferase E-cadherin promoter constructs (2 μ g/well) following treatment with 200 ng/ml rhBMP-6 after 24 h of transfection. The luciferase activity of the extracts was determined 24 h after BMP-6 induction using a Betascope analyzer. Luciferase values are normalized with Renilla activities. * indicates $p < 0.05$ in unpaired student t test when compared with vector alone. Data represent three independent experiments.

being activated by rhBMP-6 (Figure 4b, lane 2 verse 4), confirming a role for δ EF1 in suppressing transcriptional activation of E-cadherin by inducers such as BMP-6.

To further address the specificity of δ EF1 in regulation of E-cadherin promoter, we mutated two δ EF1-binding sites identified in the human E-cadherin promoter (-308/+21), individually or in combination (Figure 5). The mutant E-cadherin promoter constructs were then co-transfected with δ EF1 expression plasmid in the presence of rhBMP-6. A measurement of luciferase activity indicated that δ EF1 expression inhibited BMP-6-induced reporter activity of

the E-cadherin promoter harboring mutations in either E-box 1 or E-box 3 (Figure 4b, lane 6 verse 8, lane 10 verse 12), an effect similar to that of δ EF1 on the wild-type E-cadherin promoter. However, mutations within both E-box elements abolished the repressive effect of δ EF1 on the BMP-6-induced reporter gene activity (Figure 4b, lane 13 verse 15, lane 14 verse 16). These data suggested that ectopic expression of δ EF1 can attenuate BMP-6-induced transactivation of the E-cadherin promoter through either the E-box 1 or E-box 3 binding sites in MDA-MB-231 cells. Mutation of both E-boxes is required to efficiently interfere with the repressive effect of δ EF1 on BMP-6-regulated

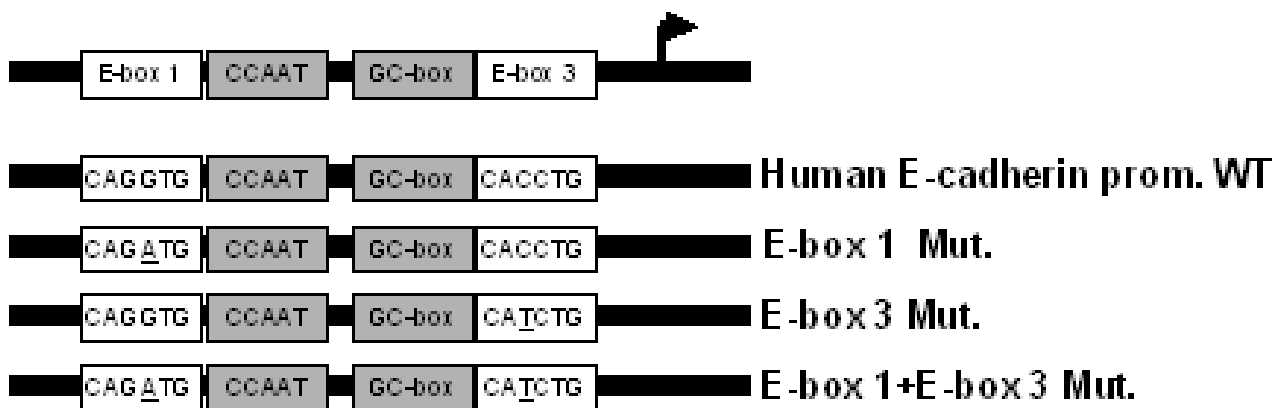


Figure 5
Scheme of the cloned promoter region of human E-cadherin. The putative δ EF1-binding sites (E-box 1 and E-box 3) and mutations generated in the δ EF1-binding sites are indicated.

E-cadherin expression. Moreover, the double mutation of E-boxes not only abolishes the repressive effect of δ EF1, it also blunts the induction effect by BMP-6 on E-cadherin promoter. Collectively, we can conclude that in MDA-MB-231 cells, the BMP-6 mediated activation of E-cadherin gene is closely associated with the ability of E-cadherin promoter to bind to its putative suppressors (such as δ EF1) through its E-box 1 and E-box 3.

Naturally we were interested in investigating whether knockdown of δ EF1 using RNA interference (RNAi) would result in an activation of the promoter. To do so, a small interfering RNA (siRNA) targeting δ EF1 or a scrambled control siRNA were stably transfected into MDA-MB-231 cells, followed by treatments with 200 ng/ml rhBMP-6. The knockdown of δ EF1 expression was confirmed by western blot (Figure 6a), accompanied by a significant increase in the promoter activity of E-cadherin with or without BMP-6 treatment, compared to the cells transfected with the control siRNA (Figure 6b). The data verified that depletion of δ EF1 in MDA-MB-231 cells is sufficient to allow a native expression of the silenced E-cadherin gene. Furthermore, a knockdown of δ EF1 abolished the E-cadherin promoter stimulation by rhBMP-6 (Figure 6b), suggesting that the stimulatory effect of BMP-6 on E-cadherin transcription occurs indirectly. Down-regulation of δ EF1 is a pre-requisite for BMP-6 to induce the expression of E-cadherin. While the δ EF1 suppression of the BMP-6-stimulated E-cadherin promoter activity was dose-dependent, double mutation of E-boxes causes a total abolishment of the δ EF1 effect, given that the molecule was unable to exhibit a repression at any dose when both E-boxes were mutated (Figure 7).

BMP-6 attenuates the association of endogenous δ EF1 with E-cadherin promoter

As previously demonstrated, we have shown that BMP-6 can down-regulate the repressor, δ EF1, to effectively stimulate the E-cadherin promoter. Considering that δ EF1 is directly associated with the E-cadherin proximal promoter *in vivo*, acting as a direct transcription repressor [36], we wished to study this physical interaction in response to BMP-6 by quantitative CHIP assay. Total protein lysates from MDA-MB-231 cells treated with or without 200 ng/ml rhBMP-6 were further incubated with a δ EF1 antibody directed against the δ EF1 amino-terminus in order to precipitate endogenous δ EF1. As shown in Figure 8a, δ EF1 specifically bound to the -175/+21 region of the E-cadherin promoter, and the binding was significantly reduced by BMP-6 treatment (Figure 8b). This data supports the notion that BMP-6 stimulation of E-cadherin promoter takes place through both a reduction of δ EF1 expression and a physical removal of δ EF1 from binding to its cognate DNA elements.

Discussion

The progressive and metastatic nature of breast cancer has been well recognized, yet the mechanisms through which breast cancer cells acquire their invasive properties have not been clearly elucidated. Several studies have reported that breast cancer produces a variety of growth factors that can play a role in the progression and metastasis of breast cancer. In the current study, we have uncovered that one of these factors, BMP-6, contributes to the regulation of E-cadherin-mediated epithelial-mesenchymal transition of breast cancer *in vitro*. In addition, we have shown that the stimulatory effect of BMP-6 on E-cadherin transcription occurs through reducing the expression and activity of δ EF1, which we have found to be a strong transcriptional

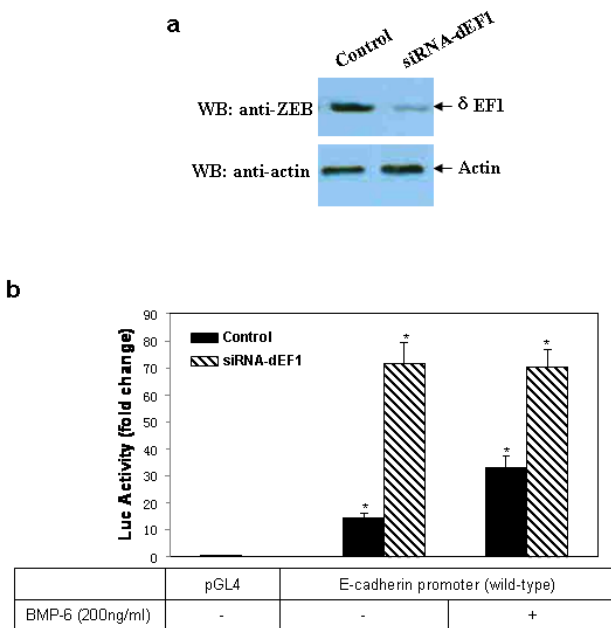


Figure 6
Repression of endogenous δ EF1 abolishes BMP-6-induced transactivation of the E-cadherin promoter in MDA-MB-231 breast cancer cells. (a) δ EF1-specific siRNA plasmid (siRNA- δ EF1) was introduced into MDA-MB-231 cells to generate δ EF1-interfered stable transfectants. Control cells were treated with a scrambled siRNA. The efficiency of δ EF1 protein knockdown was examined by western blot, using an anti-ZEB antibody. Actin was used as a loading control. (b) δ EF1-interfered MDA-MB-231 cell were transiently transfected with luciferase E-cadherin promoter constructs. After transfection for 24 h, cells were treated with 200 ng/ml rhBMP-6. The luciferase activity of the extracts was determined 24 h after BMP-6 treatment using a Beta-scope analyzer. Luciferase values are normalized with Renilla activities. * indicates $p < 0.05$ in unpaired student t test when compared with vector alone.

repressor of the E-cadherin gene. Importantly, the reverse relationship between BMP-6/E-cadherin and δ EF1 expressions in cancer cell lines has been verified in clinical tumor specimens. Our results provide the first evidence, at the cellular level, to support the hypothesis that breast cancers may progress and metastasize through the regulation of E-cadherin expression by BMP-6 and δ EF1.

Expression of BMPs has been reported to increase with breast cancer progression. Several studies on the overexpression of BMPs, such as BMP-2, BMP-4, and BMP-7 in mammary tumor cells [45-47] are suggestive of a role of BMPs in breast cancer development. Clement *et al.* were the first to report that BMP-6 is detectable, not only in breast cancer cell lines, such as MCF-7, SK-BR-3, MDA-MB-453, BT-20, and ZR-75-1, but also in most tumor

specimens, using RT-PCR and immunohistochemistry [21]. Importantly, BMP-6 expression was significantly increased and was most intense in the vicinity of chondroid matrix of complex adenomas and mixed benign tumors of canine mammary glands [1,2]. In agreement with these reports, we present here our finding that significantly higher levels of BMP-6 were observed in breast cancer cell lines and clinical tumor specimens, using quantitative RT-PCR. Moreover, BMP-6 expression is higher in the ER+ breast cancer cell line, MCF-7, compared to the ER- breast cancer cell line, MDA-MB-231. Although BMP-6 expression levels varied widely among tumor specimens, it was relatively higher in ER+ cases than in ER- cases. This coincides with our previous finding that BMP-6 promoter methylation status is correlated with ER status in breast cancer. In that study, we observed significantly lower levels of BMP-6 mRNA in ER- breast cancer cells compared with ER+ breast cancer cells, an effect attributed to hypermethylation status in the ER- breast cancer cells [48]. In addition to breast cancer, BMP-6 has been found in a variety of other cancer cell types, including prostate, kidney, esophagus, and osteosarcoma [25,49-51], suggesting its association with the progression of tumorigenesis.

E-cadherin is ubiquitously expressed by epithelial cells, from which most cancers are derived. E-cadherin-mediated cell-cell adhesion prevents cells in a primary tumor from breaking away and invading near or distant sites. It has been well documented that loss of E-cadherin in mammary epithelial cells can promote breast cancer progression and metastasis [52]. Recently, several factors, including ErbB2 [18], TGF- β [19], and estrogen [20], were reported to regulate E-cadherin expression through different mechanisms. In this study, we have determined that BMP-6 is a novel stimulus of E-cadherin expression in breast cancer cells, providing evidence for a potential role of BMP-6 in tumor progression and metastasis. In addition, our results indicate that BMP-6-induced expression of E-cadherin is correlated with ER status. Higher levels of BMP-6 and E-cadherin transcripts were observed in ER+ breast cancer cells, while lower amounts were detected in ER- cells. These observations are in line with a previous finding that loss of E-cadherin expression was associated with the lack of ER expression and a more aggressive phenotype of breast cancer with poor clinical prognosis [20]. Thus, our observations lead us to propose that BMP-6 may cooperate with other factors, such as estrogen, to participate in attenuating breast cancer progression.

Several epigenetic mechanisms have been implicated in E-cadherin regulation in breast cancer [53], among these, a few zinc-finger transcription factors are known to bind to E-box elements of the E-cadherin promoter and repress transcription, including Snail1 [11-14], Snail2 [15,16],

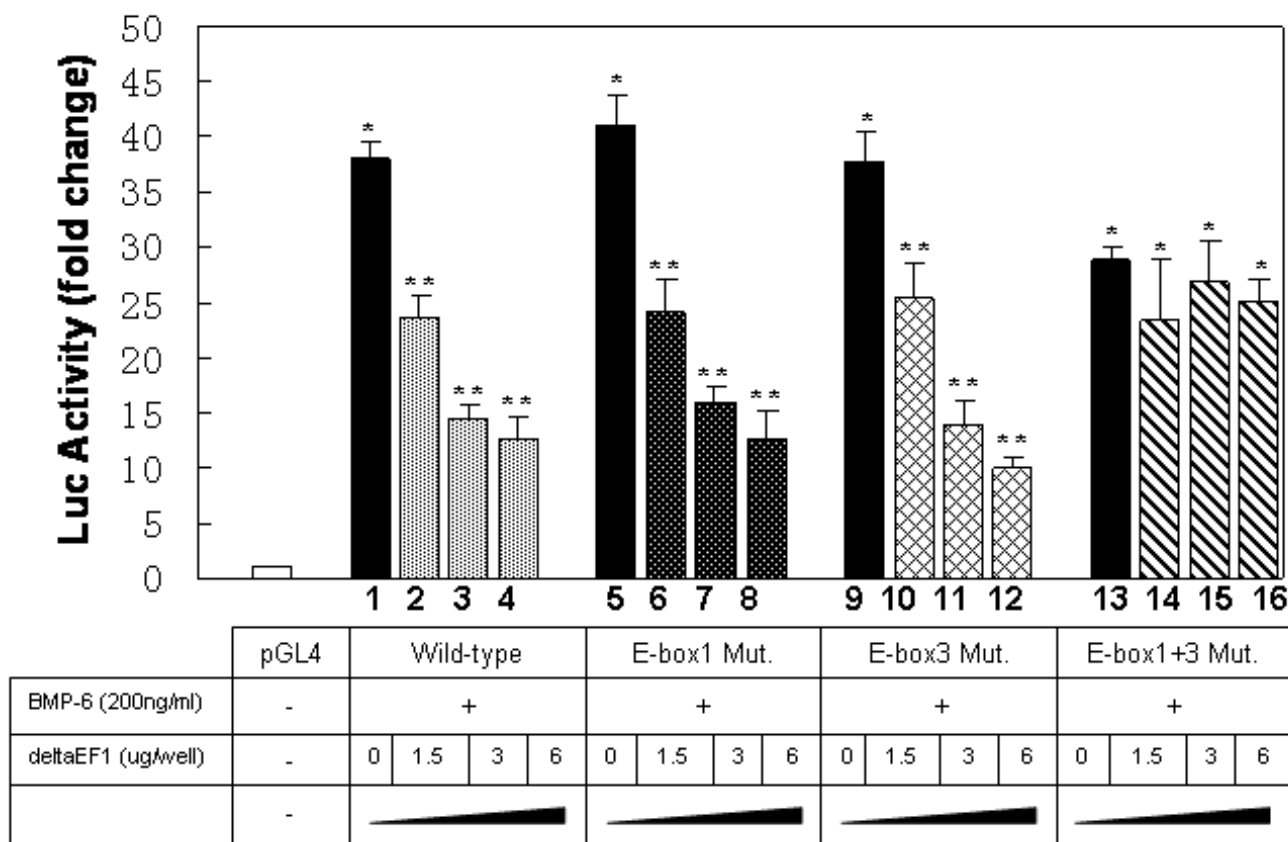


Figure 7
BMP-6-induced transactivation of E-cadherin is suppressed by δ EF1 in a dose-dependent manner. Wild-type or mutated human E-cadherin promoter constructs were co-transfected with different amounts of δ EF1 expression plasmid (1.5, 3.0, 6.0 μ g/well) into MDA-MB-231 cells, followed by the treatment with 200 ng/ml rhBMP-6 after 24 h of transfection. The luciferase activity of the extracts was determined 24 h after BMP-6 treatment using a Betascope analyzer. Luciferase values are normalized with Renilla activities. Data represent three independent experiments. * indicates $p < 0.05$ in unpaired student t test when compared with vector alone. ** indicates $p < 0.05$ in one-way analysis of variance followed by Dunnett's test when compared with vector alone.

and SIP1 [17]. δ EF1, a close homolog of SIP1 [54], was previously shown to directly bind to E-box elements of the E-cadherin promoter and inhibit the expression of endogenous E-cadherin mRNA and protein in mammary epithelial cells [36]. These previous observations are consistent with our results demonstrating that overexpression of δ EF1 is sufficient to block transactivation of E-cadherin in MDA-MB-231 cells. In line with our findings, a recent paper has also supported a role of δ EF1 in E-cadherin repression in lung cancer cells [38]. In spite of these findings, the upstream factors responsible for regulating the δ EF1/E-cadherin loop in breast cancer have not yet been identified. Our current work has provided two novel findings in this context, (1) δ EF1 can repress BMP-6-mediated up-regulation of E-cadherin and (2) the integrity of a single δ EF1-binding element in the proximal E-cadherin promoter is sufficient for the repression effect of δ EF1,

providing evidence that BMP-6 may affect E-cadherin-mediated progression and metastasis through the regulation of specific genes, such as δ EF1, during breast tumorigenesis. Furthermore, the fact that artificial removal of δ EF1 by RNAi enhances gene expression of E-cadherin supports the important role of δ EF1 to be down-regulated by BMP-6 in the native state in order for BMP-6 to induce E-cadherin expression. RNAi does it by mediating mRNA degradation, whereas BMP-6 does it by (1) inhibiting the expression of δ EF1, and (2) by dislodging δ EF1 that has already bound to the E-cadherin gene. Our overall data demonstrates that δ EF1 is a native repressor of E-cadherin gene. Factors that remove/decrease δ EF1 level would subsequently increase the expression of E-cadherin.

Previous research from our group indicated that δ EF1 represses BMP-2-induced differentiation of C2C12 myob-

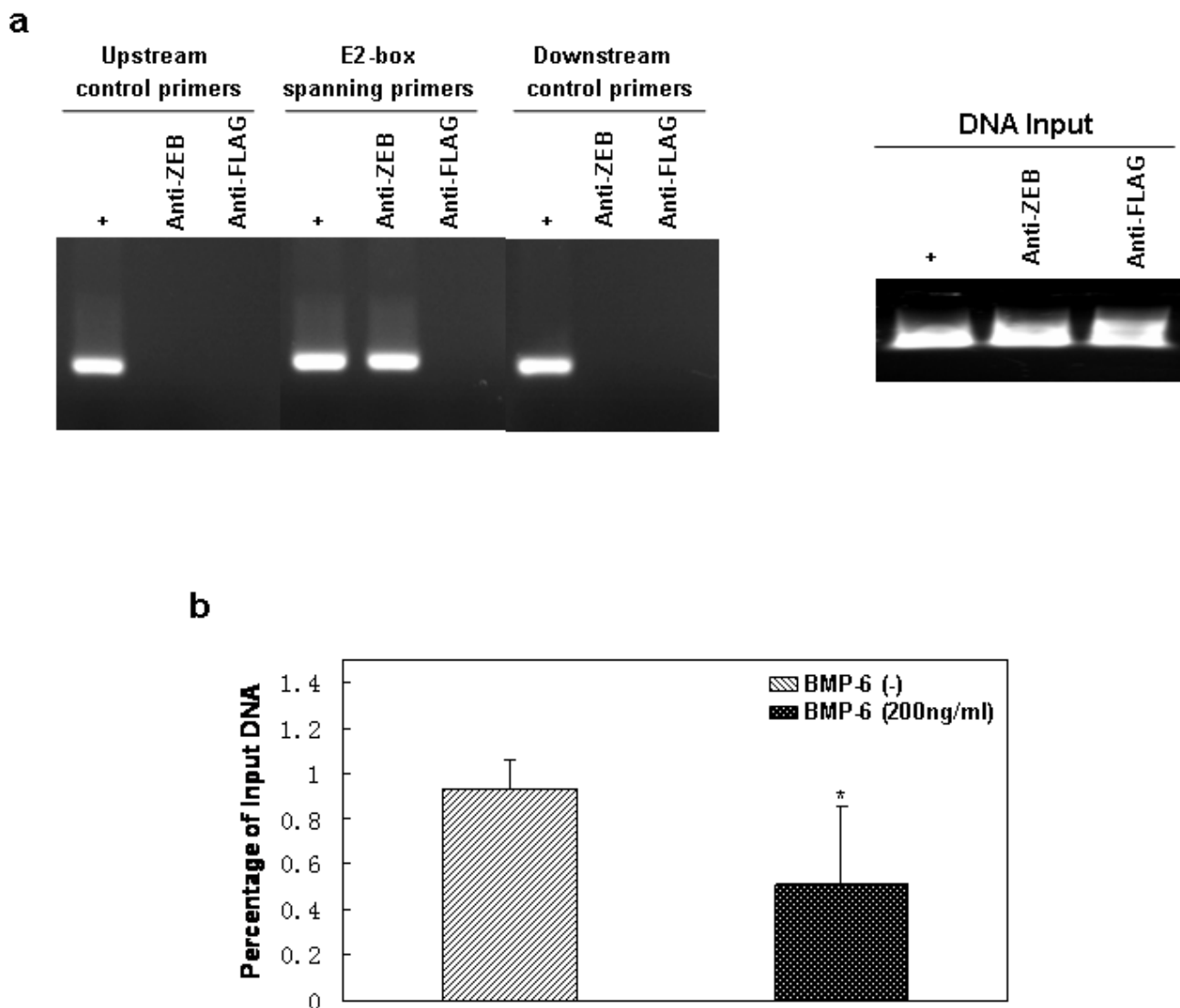


Figure 8
BMP-6 represses binding of endogenous δ EF1 to the E-cadherin proximal promoter in MDA-MB-231 breast cancer cells. (a) Association of δ EF1 with the E-cadherin promoter region was examined *in vivo* by CHIP analysis in MDA-MB-231 cells, using an unrelated anti-FLAG antibody or an anti-ZEB antibody directed against the N-terminal epitopes of δ EF1. The amplified human E-cadherin promoter fragment is shown (-175/+21). (b) For quantitative CHIP assay, MDA-MB-231 cells were treated with or without 200 ng/ml rhBMP-6. Cell lysates were collected after 72 h. The IP was performed using anti-ZEB antibody (10 μ g) with anti-FLAG antibody (10 μ g) as a negative control. DNA fragments containing the E-cadherin promoter region (-175/+21) were amplified by quantitative PCR from anti-ZEB and anti-FLAG immunoprecipitated samples. Data represent three independent experiments. * indicates $p < 0.05$ in unpaired t-test when compared with un-treated group.

lasts into the osteoblast lineage, an effect that is not mediated via the canonical BMP/Smad signaling pathway, but instead by differential regulation of the AP-1 pathway [55]. In the study reported here, we found that overexpression of R-Smads (Smad 1 and 5) failed to augment BMP-6-induced transactivation of E-cadherin, which is mediated by suppression of δ EF1 (data not shown). However,

further studies will be required for a better understanding of the signal transduction mechanisms regulated by BMP-6 and δ EF1 in breast cancer cells.

Breast cancer metastasis is a complicated process, during which the important functions of estrogen and the estrogen receptor have been consistently recognized [56,57]. In

this study, we observed that, in breast cancer cell lines and clinical tumor specimens, δ EF1 was expressed at a higher level in ER⁻ cells compared to ER⁺ cells, indicating that δ EF1 might contribute to the malignant conversion of breast cancer cells towards invasive and metastatic phenotypes. On the other hand, the contribution of BMP-6 to tumor metastasis has been recently studied in prostate cancer, suggesting that BMP-6 plays an important role in regulating tumor cell invasion [25]. We recently showed that BMP-6 in ER⁺ breast cancer cells could be activated by estrogen through promoter demethylation [29,48]. Considering our finding that BMP-6-induced E-cadherin transactivation occurs indirectly, through the reduction of δ EF1 expression, we speculate that overexpression of BMP-6 by breast cancer cells may represent a novel mechanism that regulates specific target genes such as E-cadherin and δ EF1, in modulating metastasis and invasion of breast cancer.

Conclusion

Our data suggest that the stimulatory effect of BMP-6 on E-cadherin transcription in breast cancer cells occurs indirectly, through the reduced expression and activity of δ EF1. Repressors of BMP-6 and E-cadherin, such as δ EF1, may regulate breast tumor progression and metastasis at different stages, including the initial de-differentiation of primary tumor cells and the maintenance of migratory and/or undifferentiated phenotypes. Further studies should be focused on better understanding of the signal transduction mechanisms and the relationship between BMP-6 and δ EF1 in breast cancer formation, progression, and metastasis.

Competing interests

The author(s) declare that they have no competing interests.

Authors' contributions

SY conceived the study, carried out the cell culture, luciferase assay, and Q-CHIP assay experiments, and drafted the manuscript. JD performed total RNA extraction and Q-PCR experiments. ZW performed all plasmid construction experiments. WY performed immunoblotting experiments. YQ performed all statistical analyses. MZ and JZ performed RT-PCR experiments. SG, JY, and BS processed the clinical breast tumor samples. TZ supervised the work, and helped to draft and revise the manuscript. All authors have read and approved the final manuscript.

Acknowledgements

This work is supported by a grant from the National Nature Science Foundation of China to S. Yang (No. 30700471). We thank Dr. D. Ji at Global Bioscience, Procter and Gamble Company, USA, for his critical reading and comments on the manuscript. We thank Dr. X. Zheng at Department of Biochemistry and Molecular Biology, University of Calgary Health Sciences Center, Canada, for his critical reading of the manuscript.

References

1. Akiyoshi T, Uchida K, Tateyama S: **Expression of bone morphogenetic protein-6 (BMP-6) and BMP receptors in myoepithelial cells of canine mammary gland tumors.** *Vet Pathol* 2004, **41**:154-163.
2. Tateyama S, Uchida K, Hidaka T, Hirao M, Yamaguchi R: **Expression of bone morphogenetic protein-6 (BMP-6) in myoepithelial cells in canine mammary gland tumors.** *Vet Pathol* 2001, **38**:703-709.
3. Berx G, Van Roy F: **The E-cadherin/catenin complex: an important gatekeeper in breast cancer tumorigenesis and malignant progression.** *Breast Cancer Res* 2001, **3**:289-293.
4. Cleton-Jansen AM: **E-cadherin and loss of heterozygosity at chromosome 16 in breast carcinogenesis: different genetic pathways in ductal and lobular breast cancer?** *Breast Cancer Res* 2002, **4**:5-8.
5. Frixen UH, Behrens J, Sachs M, Eberle G, Voss B, Warda A, Lochner D, Birchmeier W: **E-cadherin-mediated cell-cell adhesion prevents invasiveness of human carcinoma cells.** *J Cell Biol* 1991, **113**:173-185.
6. Vleminckx K, Vakaet L Jr, Mareel M, Fiers W, van Roy F: **Genetic manipulation of E-cadherin expression by epithelial tumor cells reveals an invasion suppressor role.** *Cell* 1991, **66**:107-119.
7. Perl AK, Wilgenbus P, Dahl U, Semb H, Christofori G: **A causal role for E-cadherin in the transition from adenoma to carcinoma.** *Nature* 1998, **392**:190-193.
8. Grady WM, Willis J, Guilford PJ, Dunbier AK, Toro TT, Lynch H, Wiesner G, Ferguson K, Eng C, Park JG, Kim SJ, Markowitz S: **Methylation of the CDH1 promoter as the second genetic hit in hereditary diffuse gastric cancer.** *Nat Genet* 2000, **26**:16-17.
9. Yang J, Mani SA, Donaher JL, Ramaswamy S, Itzykson RA, Come C, Savagner P, Gitelman I, Richardson A, Weinberg RA: **Twist, a master regulator of morphogenesis, plays an essential role in tumor metastasis.** *Cell* 2004, **117**:927-939.
10. Kang Y, Massague J: **Epithelial-mesenchymal transitions: Twist in development and metastasis.** *Cell* 2004, **118**:277-279.
11. Cano A, Pérez-Moreno MA, Rodrigo I, Locascio A, Blanco MJ, del Barrio MG, Portillo F, Nieto MA: **The transcription factor snail controls epithelial-mesenchymal transitions by repressing E-cadherin expression.** *Nat Cell Biol* 2000, **2**:76-83.
12. Batlle E, Sancho E, Francí C, Domínguez D, Monfar M, Baulida J, García De Herreros A: **The transcription factor snail is a repressor of E-cadherin gene expression in epithelial tumour cells.** *Nat Cell Biol* 2000, **2**:84-9.
13. Guaita S, Puig I, Francí C, Garrido M, Domínguez D, Batlle E, Sancho E, Dedhar S, de Herreros AG, Baulida J: **Snail induction of epithelial to mesenchymal transition in tumor cells is accompanied by MUC1 repression and ZEB1 expression.** *J Biol Chem* 2002, **277**:39209-39216.
14. Peinado H, Marin F, Cubillo E, Stark HJ, Fusenig N, Nieto MA, Cano A: **Snail and E47 repressors of E-cadherin induce distinct invasive and angiogenic properties in vivo.** *J Cell Sci* 2004, **117**:2827-2939.
15. Hajra KM, Chen DY, Fearon ER: **The SLUG zinc-finger protein represses E-cadherin in breast cancer.** *Cancer Res* 2002, **62**:1613-1618.
16. Bolos V, Peinado H, Perez-Moreno MA, Fraga MF, Esteller M, Cano A: **The transcription factor Slug represses E-cadherin expression and induces epithelial to mesenchymal transitions: a comparison with Snail and E47 repressors.** *J Cell Sci* 2003, **116**:499-511.
17. Comijn J, Berx G, Vermaessen P, Verschuere K, van Grunsven L, Bruyneel E, Mareel M, Huylebroeck D, van Roy F: **The two-handed E box binding zinc finger protein SIP1 downregulates E-cadherin and induces invasion.** *Mol Cell* 2001, **7**:1267-1278.
18. Hatsell S, Rowlands TR, Hiremath M, Cowin P: **The role of b-catenin and Tcfs in mammary development and neoplasia.** *J Mammary Gland Biol* 2003, **8**:143-156.
19. Deckers M, van Dinther M, Buijs J, Que I, Lowik C, van der Pluijm G, ten Dijke P: **The tumor suppressor Smad4 is required for transforming growth factor beta-induced epithelial to mesenchymal transition and bone metastasis of breast cancer cells.** *Cancer Res* 2006, **66**:2202-2209.
20. Fujita N, Jaye DL, Kajita M, Geigerman C, Moreno CS, Wade PA: **MTA3, a Mi-2/NuRD complex subunit, regulates an invasive growth pathway in breast cancer.** *Cell* 2003, **113**:207-219.

21. Clement JH, Sanger J, Hoffken K: **Expression of bone morphogenetic protein 6 in normal mammary tissue and breast cancer cell lines and its regulation by epidermal growth factor.** *Int J Cancer* 1999, **80**:250-256.
22. Gitelman EG, Kobrin MS, Ye J-Q, Lopez AR, Lee A, Derynck R: **Recombinant Vgr-1/BMP-6-expressing tumors induce fibrosis and endochondral bone formation in vivo.** *J Cell Biol* 1994, **126**:1595-1609.
23. Drozdoff V, Wall NA, Pledger WJ: **Expression and growth inhibitory effect of decapentaplegic-Vg-related protein 6: evidence for a regulatory role in keratinocyte differentiation.** *Proc Natl Acad Sci USA* 1994, **91**:5528-5532.
24. Kusafuka K, Yamaguchi A, Kayano T, Takemura T: **Immuno-histochemical localization of the bone morphogenetic protein-6 in salivary pleomorphic adenomas.** *Pathol Int* 1999, **49**:1023-1027.
25. Dai J, Keller J, Zhang J, Lu Y, Yao Z, Keller ET: **Bone morphogenetic protein-6 promotes osteoblastic prostate cancer bone metastases through a dual mechanism.** *Cancer Res* 2005, **65**:8274-8285.
26. Hatakeyama S, Gao YH, Nemoto YO, Kataoka H, Satoh M: **Expression of bone morphogenetic proteins of human neoplastic epithelial cells.** *Biochem Mol Biol Int* 1997, **42**:497-505.
27. Thomas BG, Hamdy FC: **Bone morphogenetic protein-6: potential mediator of osteoblastic metastases in prostate cancer.** *Prostate Cancer Prostatic Dis* 2000, **3**:283-285.
28. Kawabata A, Okano K, Uchida K, Yamaguchi R, Hayashi T, Tateyama S: **Co-localization of chondromodulin-I (ChM-I) and bone morphogenetic protein-6 (BMP-6) in myoepithelial cells of canine mammary tumors.** *J Vet Med Sci* 2005, **67**:1097-1102.
29. Zhang M, Yan JD, Zhang L, Wang Q, Lu SJ, Zhang J, Zhu TH: **Activation of bone morphogenetic protein-6 gene transcription in MCF-7 cells by estrogen.** *Chin Med J (Engl)* 2005, **118**:1629-1636.
30. Fortini ME, Lai ZC, Rubin GM: **The Drosophila zfh-1 and zfh-2 genes encode novel proteins containing both zinc-finger and homeodomain motifs.** *Mech Dev* 1991, **34**:113-122.
31. Lai ZC, Rushton E, Bate M, Rubin GM: **Loss of function of the Drosophila zfh-1 gene results in abnormal development of mesodermally derived tissues.** *Proc Natl Acad Sci USA* 1993, **90**:4122-4126.
32. Funahashi J, Kamachi Y, Goto K, Kondoh H: **Identification of nuclear factor delta EFl and its binding site essential for lens-specific activity of the delta I-crystallin enhancer.** *Nucleic Acids Res* 1991, **19**:3543-3547.
33. Franklin AJ, Jetton TL, Shelton KD, Magnuson MA: **BZP, a novel serum-responsive zinc finger protein that inhibits gene transcription.** *Mol Cell Biol* 1994, **14**:6773-6788.
34. Kamachi Y, Kondoh H: **Overlapping positive and negative regulatory elements determine lens-specific activity of the delta I-crystallin enhancer.** *Mol Cell Biol* 1993, **13**:5206-5215.
35. Sekido R, Murai K, Kamachi Y, Kondoh H: **Two mechanisms in the action of repressor deltaEFl: binding site competition with an activator and active repression.** *Genes Cells* 1997, **2**:771-783.
36. Eger A, Aigner K, Sonderegger S, Dampier B, Oehler S, Schreiber M, Berx G, Cano A, Beug H, Foisner R: **DeltaEFl is a transcriptional repressor of E-cadherin and regulates epithelial plasticity in breast cancer cells.** *Oncogene* 2005, **24**:2375-2385.
37. Guaita S, Puig I, Franci C, Garrido M, Dominguez D, Batlle E, Sancho E, Dedhar S, de Herreros AG, Baulida J: **Snail induction of epithelial to mesenchymal transition in tumor cells is accompanied by MUC1 repression and ZEB1 expression.** *J Biol Chem* 2002, **277**(42):39209-39216.
38. Ohira T, Gemmill RM, Ferguson K, Kusy S, Roche J, Brambilla E, Zeng C, Baron A, Bemis L, Erickson P, Wilder E, Rustgi A, Kitajewski J, Gabrielson E, Bremnes R, Franklin W, Drabkin HA: **WNT7a induces E-cadherin in lung cancer cells.** *Proc Natl Acad Sci USA* 2003, **100**:10429-10434.
39. Thiery JP: **Epithelial-mesenchymal transitions in tumour progression.** *Nat Rev Cancer* 2002, **2**:442-454.
40. Dillner NB, Sanders MM: **The zinc finger/homeodomain protein deltaEFl mediates estrogen-specific induction of the ovalbumin gene.** *Mol Cell Endocrinol* 2002, **192**:85-91.
41. Dillner NB, Sanders MM: **Transcriptional activation by the zinc-finger homeodomain protein deltaEFl in estrogen signaling cascades.** *DNA Cell Biol* 2004, **23**:25-34.
42. Richer JK, Jacobsen BM, Manning NG, Abel MG, Wolf DM, Horwitz KB: **Differential gene regulation by the two progesterone receptor isoforms in human breast cancer cells.** *J Biol Chem* 2001, **277**:5209-5218.
43. Chamberlain EM, Sanders MM: **Identification of the novel player deltaEFl in estrogen transcriptional cascades.** *Mol Cell Biol* 1999, **19**:3600-3606.
44. Lacroix M, Leclercq G: **Relevance of breast cancer cell lines as models for breast tumours: an update.** *Breast Cancer Res Treat* 2004, **83**:249-289.
45. Alarmo EL, Kuukasjarvi T, Karhu R, Kallioniemi A: **A comprehensive expression survey of bone morphogenetic proteins in breast cancer highlights the importance of BMP4 and BMP7.** *Breast Cancer Res Treat* 2006, **103**:239-46.
46. Alarmo EL, Rauta J, Kauraniemi P, Karhu R, Kuukasjarvi T, Kallioniemi A: **Bone morphogenetic protein 7 is widely overexpressed in primary breast cancer.** *Genes Chromosomes Cancer* 2006, **45**:411-419.
47. Montesano R: **Bone morphogenetic protein-4 abrogates lumen formation by mammary epithelial cells and promotes invasive growth.** *Biochem Biophys Res Commun* 2007, **353**:817-822.
48. Zhang M, Wang Q, Yuan W, Yang S, Wang X, Du J, Yan JD, Zhu TH: **Epigenetic Regulation of Bone morphogenetic protein-6 Gene Expression in breast cancer cells.** *J Steroid Biochem* 2007, **105**:91-97.
49. Kim IY, Lee DH, Lee DK, Kim BC, Kim HT, Leach FS, Linehan WM, Morton RA, Kim SJ: **Decreased expression of bone morphogenetic protein (BMP) receptor type II correlates with insensitivity to BMP-6 in human renal cell carcinoma cells.** *Clin Cancer Res* 2003, **9**:6046-6051.
50. Raida M, Sarbia M, Clement JH, Adam S, Gabbert HE, Hoffken K: **Expression, regulation and clinical significance of bone morphogenetic protein 6 in esophageal squamous-cell carcinoma.** *Int J Cancer* 1999, **83**:38-44.
51. Sulzbacher I, Birner P, Trieb K, Pichlbauer E, Lang S: **The expression of bone morphogenetic proteins in osteosarcoma and its relevance as a prognostic parameter.** *J Clin Pathol* 2002, **55**:381-385.
52. Knudsen KA, Wheelock MJ: **Cadherins and the mammary gland.** *J Cell Biochem* 2005, **95**:488-496.
53. Mielnicki LM, Asch HL, Asch BB: **Genes, chromatin, and breast cancer: An epigenetic tale.** *J Mammary Gland Biol Neoplasia* 2001, **6**:169-182.
54. van Grunsven LA, Schellens A, Huylebroeck D, Verschueren K: **SIP1 (Smad interacting protein 1) and deltaEFl (delta-crystallin enhancer binding factor) are structurally similar transcriptional repressors.** *J Bone Joint Surg Am* 2001, **83-A**(Suppl 1):S40-S47.
55. Yang S, Zhao L, Yang JH, Chai DG, Zhang M, Zhang J, Ji XH, Zhu TH: **DeltaEFl represses BMP-2-induced osteoblast differentiation of C2C12 cells.** *J Biomed Sci* 2007, **14**:663-679.
56. Platet N, Cathiard AM, Gleizes M, Garcia M: **Estrogens and their receptors in breast cancer progression: a dual role in cancer proliferation and invasion.** *Crit Rev Oncol Hematol* 2004, **51**:55-67.
57. Fearon ER: **Connecting estrogen receptor function, transcriptional repression, and E-cadherin expression in breast cancer.** *Cancer Cell* 2003, **3**:307-10.

Pre-publication history

The pre-publication history for this paper can be accessed here:

<http://www.biomedcentral.com/1471-2407/7/211/prepub>