

Keywords: bladder cancer; recurrence; progression; risk assessment; bcg; validation

Accuracy of the EORTC risk tables and of the CUETO scoring model to predict outcomes in non-muscle-invasive urothelial carcinoma of the bladder

E Xylinas^{1,2}, M Kent³, L Kluth^{1,4}, A Pycha⁵, E Comploj⁵, R S Svatek⁶, Y Lotan⁶, Q-D Trinh⁷, P I Karakiewicz⁷, S Holmang⁸, D S Scherr¹, M Zerbib², A J Vickers³ and S F Shariat^{*,1,9,10}

¹Department of Urology, Weill Cornell Medical College, New York, NY, USA; ²Department of Urology, Cochin Hospital, APHP, Paris Descartes University, Paris, France; ³Department of Statistics, Memorial Sloan Kettering Cancer Center, New York, NY, USA; ⁴Department of Urology, University Medical Centre Hamburg-Eppendorf, Hamburg, Germany; ⁵Department of Urology, General Hospital of Bolzano, Bolzano, Italy; ⁶Department of Urology, University of Texas Southwestern Medical Center, Dallas, TX, USA; ⁷Department of Urology, University of Montreal, Montreal, Quebec, Canada; ⁸Department of Urology, Sahlgrenska University Hospital, Göteborg, Sweden; ⁹Division of Medical Oncology, Weill Cornell Medical College, New York, NY, USA and ¹⁰Department of Urology, Medical University of Vienna, Vienna, Austria

Background: The European Organization for Research and Treatment of Cancer (EORTC) risk tables and the Spanish Urological Club for Oncological Treatment (CUETO) scoring model are the two best-established predictive tools to help decision making for patients with non-muscle-invasive bladder cancer (NMIBC). The aim of the current study was to assess the performance of these predictive tools in a large multicentre cohort of NMIBC patients.

Methods: We performed a retrospective analysis of 4689 patients with NMIBC. To evaluate the discrimination of the models, we created Cox proportional hazard regression models for time to disease recurrence and progression. We incorporated the patients calculated risk score as a predictor into both of these models and then calculated their discrimination (concordance indexes). We compared the concordance index of our models with the concordance index reported for the models.

Results: With a median follow-up of 57 months, 2110 patients experienced disease recurrence and 591 patients experienced disease progression. Both tools exhibited a poor discrimination for disease recurrence and progression (0.597 and 0.662, and 0.523 and 0.616, respectively, for the EORTC and CUETO models). The EORTC tables overestimated the risk of disease recurrence and progression in high-risk patients. The discrimination of the EORTC tables was even lower in the subgroup of patients treated with BCG (0.554 and 0.576 for disease recurrence and progression, respectively). Conversely, the discrimination of the CUETO model increased in BCG-treated patients (0.597 and 0.645 for disease recurrence and progression, respectively). However, both models overestimated the risk of disease progression in high-risk patients.

Conclusion: The EORTC risk tables and the CUETO scoring system exhibit a poor discrimination for both disease recurrence and progression in NMIBC patients. These models overestimated the risk of disease recurrence and progression in high-risk patients. These overestimations remained in BCG-treated patients, especially for the EORTC tables. These results underline the need for improving our current predictive tools. However, our study is limited by its retrospective and multi-institutional design.

*Correspondence: Professor SF Shariat; E-mail: sfshariat@gmail.com or sfs2002@med.cornell.edu

Received 2 April 2013; revised 13 June 2013; accepted 22 June 2013; published online 27 August 2013

© 2013 Cancer Research UK. All rights reserved 0007–0920/13

Bladder cancer (BCa) is the most common malignancy of the urinary tract with an estimated 73 510 new cases and 14 880 deaths in 2012 in the United States (Siegel *et al*, 2013). At initial diagnosis, >70% of patients have non-muscle-invasive bladder cancer (NMIBC), which is managed by transurethral resection of the bladder (TURB) with or without intravesical therapy (Babjuk *et al*, 2011). Recurrence rates for NMIBC range from 50% to 70%, and ~10–15% of patients experience disease progression to muscle-invasive disease over a 5-year period (Sylvester *et al*, 2006; Fernandez-Gomez *et al*, 2009; Babjuk *et al*, 2011). These statistics underscore the need for a continuous, costly follow-up, making BCa the most expensive malignancy per patient (Stenzl *et al*, 2008).

To predict the short-term and long-term probabilities of disease recurrence and progression, the European Organization for Research and Treatment of Cancer (EORTC) Genitourinary (GU) group has developed a scoring system and risk tables (Sylvester *et al*, 2006), built on data from 2596 patients diagnosed with Ta/T1 tumours, who were randomised in seven previous EORTC-GU group trials. The proposed scoring system was based on the six most relevant clinical and pathological predictors of outcomes, such as tumour stage and grade, number of tumours, size, carcinoma *in situ* (cis), and prior recurrence rate. The main limitation of this scoring system was the low number of patients treated with bacillus Calmette Guérin (BCG). To overcome this limitation, the Club Urológico Español de Tratamiento Oncológico (CUETO) developed a scoring model, which predicts the short- and long-term probability of disease recurrence and progression in BCG-treated patients ($n = 1062$) (Fernandez-Gomez *et al*, 2009). Despite their potential usefulness in daily practice, to date, few studies have externally validated these models (Fernandez-Gomez *et al*, 2011; Hernandez *et al*, 2011).

The aim of the present multicentre study was to externally validate the EORTC risk tables and the CUETO scoring model for predicting disease recurrence and progression in NMIBC patients with or without BCG therapy.

PATIENTS AND METHODS

Patients. The study was performed with the approval and oversight of the institutional review board at each institution, with all participating sites providing the necessary data-sharing agreements before initiation. Templates for NMIBC data collection were sent out to eight international centres. In total, 4784 patients underwent TURB for NMIBC between 2000 and 2007. Patients who had a pure pTis disease ($n = 75$) were also excluded, as this group was too small for separate analyses, leaving a final cohort of 4689 patients. The data of these patients were frozen for analyses in January 2011.

TURB and instillation therapy. All patients had cystoscopically proven UCB and underwent complete TURB according to guideline recommendations (Babjuk *et al*, 2011). A re-resection was performed according to guideline recommendations and at surgeons' discretion within 2–6 weeks after initial treatment based on pathologic and intraoperative findings. The first adjuvant instillation was given within 7–21 days of the diagnostic TURB and repeated once weekly for 6 weeks. In all, 51% of patients ($n = 2405$) received a single immediate postoperative instillation of chemotherapy (essentially mitomycin C). All BCG patients were proposed some form of maintenance therapy (at least 1 year). None of the patients had upper tract urothelial carcinoma (UTUC) at diagnosis.

Pathologic evaluation. All surgical specimens were processed according to standard pathologic procedures. Genitourinary pathologists assigned tumour grade according to the 1973 World Health Organisation grading system. Pathological stage was

reassigned according to the 2002 American Joint Committee on Cancer TNM staging system. The presence of concomitant cis was defined as the presence of cis in conjunction with another tumour.

Follow-up regimen. Patients were followed every 3–6 months during the first 2 years after TURB, biannually up to 5 years, and annually thereafter (Babjuk *et al*, 2011; Burger *et al*, 2012). Follow-up consisted of a history, physical examination, urinary cytology, cystoscopy, and biopsy of suspicious lesions. Radiographic evaluation of the upper urinary tract to rule out UTUC was done at NMIBC diagnosis in every patient and yearly or in case of disease recurrence or suspicion, such as positive cytology during follow-up. When disease recurrence was detected, the tumour was resected. When no evidence of cancer was seen but urinary cytology was positive, bladder and prostatic urethra biopsies in addition to upper urinary tract work-up were performed. Disease recurrence was defined as first tumour relapse in the bladder regardless of tumour stage. Disease progression was defined as tumour relapse at tumour stage T2 or higher in the bladder or in the prostatic urethra. In case of death, cause of death was determined by treating physicians, by chart review corroborated by death certificates, or by death certificates alone (Rink *et al*, 2012). Tumour recurrence in the upper urinary tract was not considered as tumour recurrence but rather as a second primary tumour.

Statistical analyses. The previously published EORTC model incorporated the number of tumours (single, 2–7 or ≥ 8), tumour size (< 3 cm or ≥ 3), prior recurrence rate (primary, ≤ 1 recurrence per year, > 1 recurrence per year), T stage (Ta or T1), concomitant carcinoma *in situ*, and grade (G1, G2, or G3). Each of these variables received a scoring value as previously described (Sylvester *et al*, 2006). Patient scores were then categorized into risk groups and a probability of disease recurrence and progression were given for both end points of 1 and 5 years. We applied this scoring methodology to our cohort to calculate each patient's EORTC risk score. Using Kaplan–Meier methods, we then calculated each patient's risk for disease recurrence and progression at the same time points of 1 and 5 years. To evaluate the discrimination of the EORTC risk tables, we created Cox proportional hazard regression models for time to recurrence and time to progression. We incorporated the patients calculated risk score as a predictor into both of these models and then calculated the concordance indexes. We compared the concordance index of our models with the concordance index reported for the 5-year EORTC model. Unfortunately, the methodology for calculating separate 1-year and 5-year concordance indexes was not reported in the EORTC paper, so we could not compare our models with both time points. Calibration plots were used to compare the EORTC predicted risks with the actual risks seen in our cohort. Calibration plots usually show the predicted *versus* actual risk among different risk groups of patients. Our calibration plots were slightly modified to show the EORTC predicted risk *vs* the actual risk for each individual risk score and not just by the risk score categories.

We then repeated our analyses for the CUETO risk tables. The previously published CUETO model incorporated gender, age (< 60 , 60–70, > 70), recurrent tumour, number of tumours (≤ 3 or > 3), T stage (Ta or T1), concomitant carcinoma *in situ*, and grade (G1, G2, and G3). Similarly to the EORTC method, each of these variables received a risk scoring value, patients were categorised according to this value, and probabilities of recurrence and progression were given as previously described (Fernandez-Gomez *et al*, 2009). Concordance indexes and calibrations plots were again utilised to evaluate the accuracy of the CUETO risk tables. Unfortunately, it was not reported how separate c-indexes were calculated at 1 and 5 years, so the 1-year c-index was used for our comparisons.

We repeated the above analyses in the following subgroups of patients to explore the robustness of both risk tables: treated with BCG, not treated with BCG, primary and recurrent tumours. All statistical analyses were performed using Stata 12.0 (StataCorp, College Station, TX, USA).

RESULTS

Patient’s clinico-pathologic characteristics and oncological outcomes. Table 1 shows the clinico-pathologic characteristics of the 4689 patients included in the study. The BCG immunotherapy was administered to 538 (11%) patients. In all, 2110 patients experienced disease recurrence and 591 patients experienced disease progression. Median follow-up for patients who did not experience disease recurrence was 46 months and was 57 months for those who did not experience disease progression.

External validation of the EORTC and the CUETO models to predict disease recurrence and progression in the entire cohort. The application of the EORTC risk groupings to our cohort resulted in c-indexes for disease recurrence and progression of 0.597 and 0.662, respectively. For comparison, the published

EORTC c-indexes for disease recurrence and progression at 1 year were 0.660 and 0.740, respectively (Table 2A). When the CUETO risk groupings were applied to our cohort, the c-indexes for disease recurrence and progression were 0.523 and 0.616, respectively. For comparison, the published CUETO c-indexes were 0.636 and 0.687 for disease recurrence and progression at 1 year, respectively (Table 2B).

Calibration plots were designed to compare the predicted (red) and the actual risk (black) among each individual risk score and for each end point (at 1 and 5 years, respectively). Modified calibration plots were used due to the defined risk groupings used in the both models. Calibrations plots for disease recurrence are displayed in Figure 1A and B (EORTC) and Figure 2A and B (CUETO), respectively. With regard to disease recurrence, the EORTC model had fairly good calibration in low-risk patients (score = 0). In intermediate-risk patients (score = 1–9), the EORTC model was hindered by the heterogeneity of this risk group (underestimation and overestimation). For example, intermediate-risk patients with an EORTC risk score from 1 to 9 were included in the same group but had a 1-year risk of disease recurrence ranging from 20% to 50%. In high-risk patients (score > 10), the EORTC model overestimated the risk of disease recurrence, both at 1 and at 5 years. The CUETO model had poor calibration for disease recurrence, with underestimation of the risk for low-risk patients (score 0–6) and overestimation for high-risk patients (score > 10). The calibration for intermediate-risk patients (score = 7–9) was satisfactory.

Calibration plots for the EORTC and CUETO models for disease progression are displayed in Figures 1C, D, 2C, and D, respectively. Both models resulted in overestimation of the risk of disease progression in high-risk patients (EORTC score > 7 and CUETO score > 10) at 1 and 5 years, respectively. Moreover, both models resulted in overestimation of the risk of disease progression in intermediate-risk patients (EORTC score = 2–6 and CUETO score = 7–9) at 5 years.

Application to BCG patients. When including only patients who were treated with BCG (n = 538), similar results were found for

Table 1. Clinical characteristics and pathologic features of the 4689 patients with non-muscle-invasive urothelial carcinoma of the bladder

	Patients (n = 4689)
Age	
Median, IQR	67 (59–74)
Gender (n, %)	
Male	3721 (79%)
Female	968 (21%)
Prior recurrence rate (n, %)	
Primary	3284 (70%)
Recurrent	1405 (30%)
≤ 1 recurrence per year	727 (16%)
> 1 recurrence per year	678 (14%)
Number of tumours (n, %)	
1	2865 (61%)
2–7	1816 (39%)
≥ 8	8 (<1%)
Tumour size (n, %)	
< 3 cm	3698 (79%)
≥ 3 cm	991 (21%)
Tumour stage (n, %)	
Ta	3030 (65%)
T1	1659 (35%)
Tumour grade (n, %)	
G1	1419 (30%)
G2	1428 (30%)
G3	1842 (39%)
Concomitant CIS (n, %)	223 (5%)
Adjuvant treatment with BCG (n, %)	538 (11%)
Abbreviations: BCG = Bacille Calmette Guérin; Cis = Carcinoma <i>in situ</i> ; IQR = interquartile range.	

Table 2A. C-indexes for application of EORTC model in the entire cohort of 4689 patients with non-muscle-invasive urothelial carcinoma of the bladder

	Published EORTC estimates		
	Current study	1 Year	5 Years
Disease recurrence	0.597	0.660	0.660
Disease progression	0.662	0.740	0.750
Abbreviation: EORTC = European Organization for Research and Treatment of Cancer.			

Table 2B. C-indexes for application of CUETO model in the entire cohort of 4689 patients with non-muscle-invasive urothelial carcinoma of the bladder

	Published CUETO estimates		
	Current study	1 Year	5 Years
Disease recurrence	0.523	0.636	0.644
Disease progression	0.616	0.687	0.700
Abbreviation: CUETO = Urological Club for Oncological Treatment.			

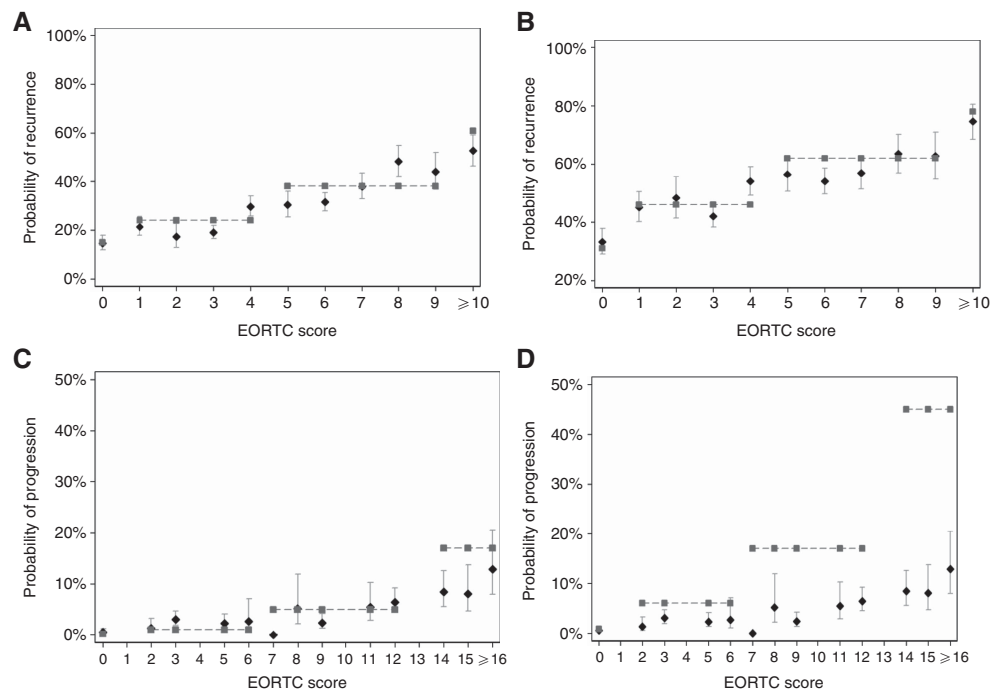


Figure 1. (A–D) Calibration plots for the EORTC model in the entire cohort of 4689 patients with non-muscle-invasive urothelial carcinoma of the bladder (Grey – EORTC risk, Black – actual risk). (A) One-year risk of recurrence. (B) Five-year risk of recurrence. (C) One-year risk of progression. (D) Five-year risk of progression.

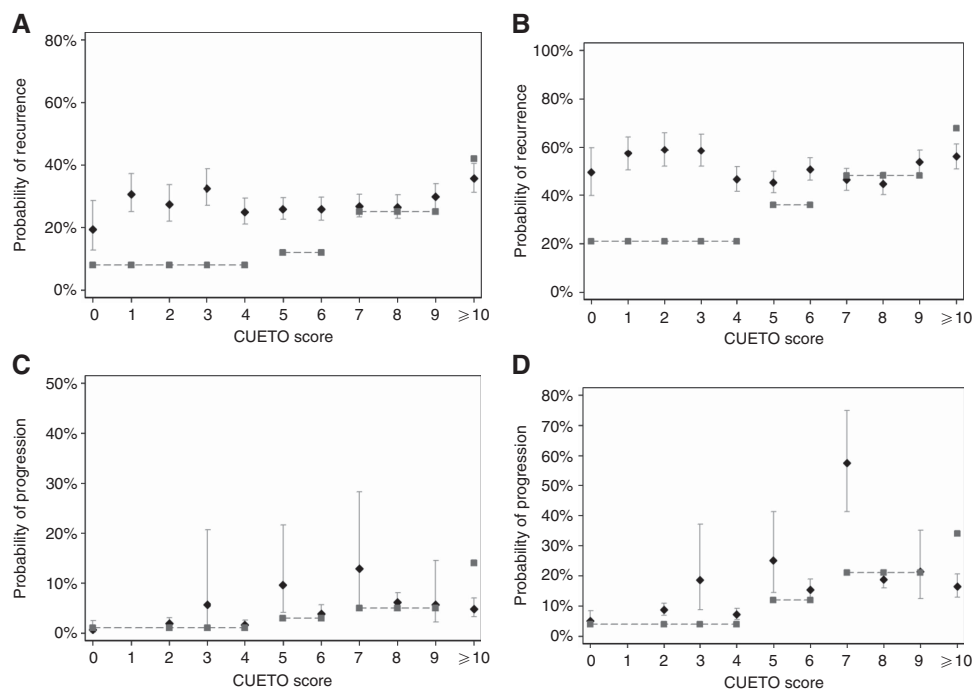


Figure 2. (A–D) Calibration plots for the CUETO model in the entire cohort of 4689 patients with non-muscle-invasive urothelial carcinoma of the bladder (Grey – CUETO risk; Black – actual risk). (A) One-year risk of recurrence. (B) Five-year risk of recurrence. (C) One-year risk of progression. (D) Five-year risk of progression.

both models. The c-indexes for the EORTC model when restricted to only BCG-treated patients were even lower than those from the development cohorts. The EORTC model had c-indexes of 0.554 and 0.576 for disease recurrence and progression, respectively (Table 3). Conversely, the discrimination of the CUETO model increased with c-indexes of 0.597 and 0.645 for disease recurrence and progression, respectively (Table 3).

The calibration plots for these patients indicate even poorer calibration than the full cohort. The EORTC model overestimated both risks of disease recurrence and progression in high-risk patients at 1 year and in intermediate- and high-risk patients at 5 years (Figure 3A–D). The CUETO model was more accurate concerning prediction of disease recurrence at 1 year, while overestimating this risk at 5 years in high-risk patients (score > 10)

(Figure 4A and B). With regard to disease progression, it overestimated this risk in intermediate (score = 7–9) and high-risk patients (score > 10), both at 1 and at 5 years (Figure 4C and D).

When including only patients who were not treated with BCG ($n = 4151$), the discrimination of the EORTC tables improved for both disease recurrence and progression (c-indexes of 0.603 and 0.672, respectively; Table 3). The discrimination of the CUETO model decreased (c-indexes of 0.522 and 0.626 for disease recurrence and progression, respectively; Table 3).

Application to primary and recurrent tumour patients. Sub-group analyses in patients with primary tumours or recurrent tumours only revealed no large differences compared with the data in the combined group (Table 3).

DISCUSSION

Non-muscle-invasive bladder cancer is a common disease with highly variable behaviour and outcomes. Many factors predicting disease recurrence and progression have been reported in this

disease to allow evidence-based risk stratification with regard to administration of therapy and follow-up scheduling. The EORTC and CUETO models were born out of this clinical need to individualise and optimise therapy for NMIBC patients. These tables are indeed the best currently existing prognostic models, and their use, as recommended by various guidelines (Babjuk *et al*, 2011; Burger *et al*, 2012) has become the standard of care. External validation of a prognostic model on a new data set of more contemporaneous patients is crucial to assess its generalisability. Frequently, the performance of a predictive model is typically overestimated in the original data used to develop the model. Therefore, we set out to test the discrimination and calibration of these models in an external multicentre cohort. Despite the ability of a prognostic model to improve the decision-making process, the validity of predictive models is based both on the agreement between observed and predicted probabilities of an event (i.e., calibration) and its ability to distinguish subjects with different prognoses (i.e., discrimination).

We found that the EORTC tables exhibited a poor discrimination in predicting both disease recurrence and progression (Seo *et al*, 2010; Fernandez-Gomez *et al*, 2011). Similarly to two previous external validations (Fernandez-Gomez *et al*, 2011; Hernandez *et al*, 2011), we found that the EORTC tables overestimated these risks in high-risk patients. This finding could be explained by the major limitation of the EORTC series: the low number of patients who received adjuvant BCG instillations indeed the model was constructed based on the data from EORTC trials testing the efficacy of various intravesical chemotherapy regimens in the post-TUR setting. Intravesical chemotherapies are considered to be inferior to BCG therapy for high-risk tumours (Malmstrom *et al*, 2009). Only a single EORTC trial, used for the EORTC tables, included patients managed with induction intravesical BCG, albeit without any form of maintenance therapy. As BCG therapy has been shown to be more effective in preventing disease recurrence (and may delay disease progression) than is intravesical chemotherapy, the overestimation by the EORTC tables of the risk of disease recurrence and progression was expected (Sylvester *et al*, 2002; Bohle and Bock, 2004; Malmstrom

Table 3. C-indexes of the EORTC and the CUETO model when applied to BCG only, no BCG, primary and recurrent tumours, respectively

	Recurrence		Progression	
	EORTC	CUETO	EORTC	CUETO
BCG patients	0.554	0.597	0.576	0.645
No BCG patients	0.603	0.522	0.672	0.626
Primary tumours	0.598	0.505	0.637	0.621
Recurrent tumours	0.585	0.547	0.660	0.638

Abbreviations: BCG = Bacille Calmette Guérin; CUETO = Urological Club for Oncological Treatment; EORTC = European Organization for Research and Treatment of Cancer.

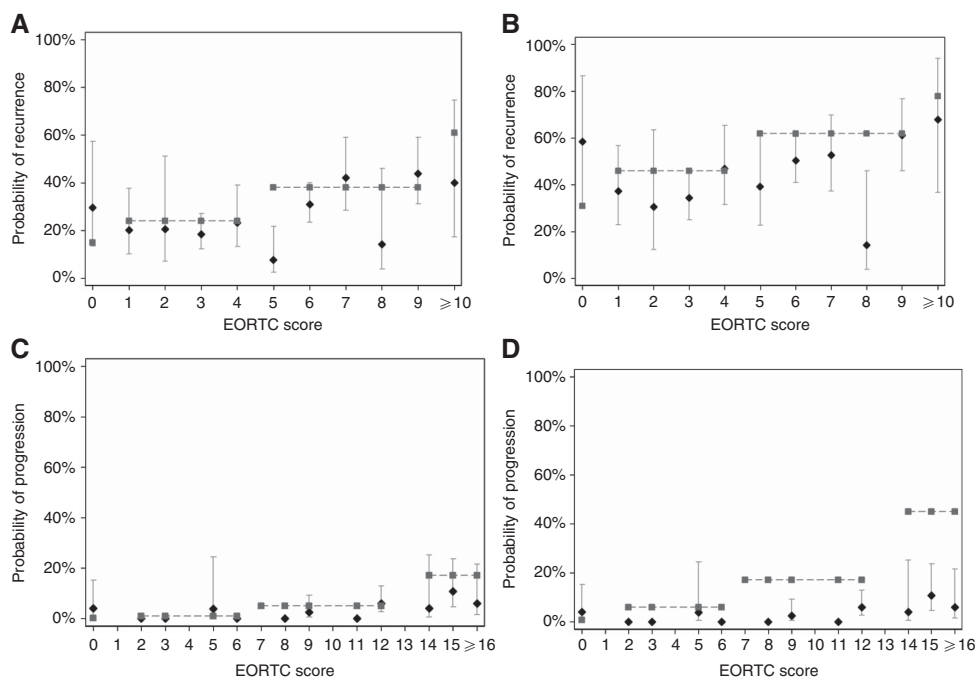


Figure 3. (A–D) Calibration plots for the EORTC model in 538 patients with non-muscle-invasive urothelial carcinoma of the bladder treated with BCG (Grey – EORTC risk; Black – actual risk). (A) One-year risk of recurrence. (B) Five-year risk of recurrence. (C) One-year risk of progression. (D) Five-year risk of progression.

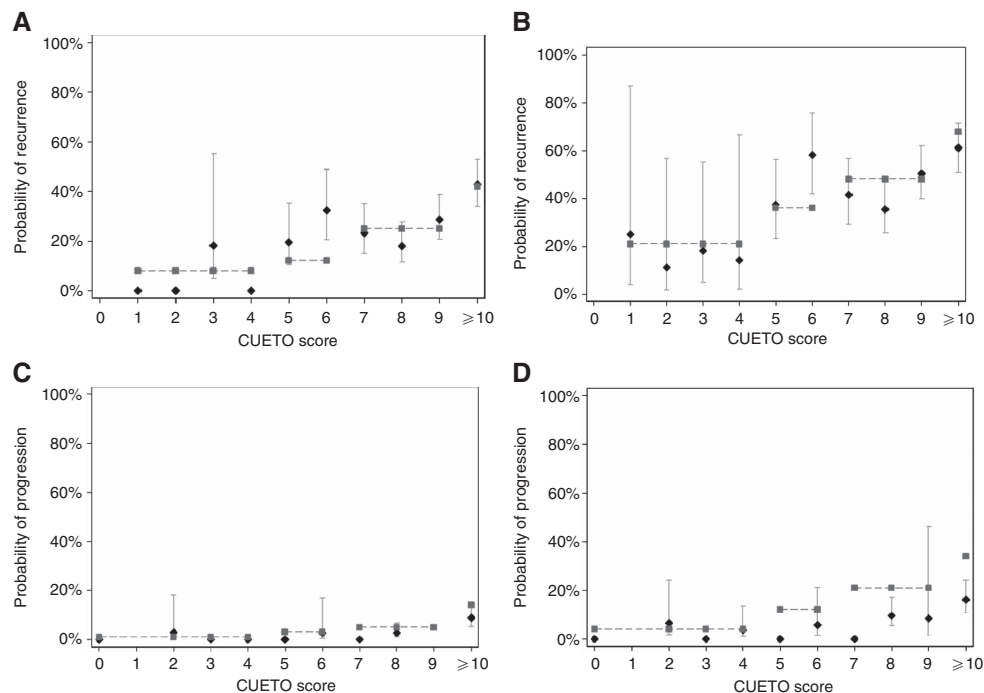


Figure 4. (A–D) Calibration plots for the CUETO model in 538 patients with non-muscle-invasive urothelial carcinoma of the bladder treated with BCG (Grey – CUETO risk; Black – actual risk). (A) One-year risk of recurrence. (B) Five-year risk of recurrence. (C) One-year risk of progression. (D) Five-year risk of progression.

et al, 2009). Moreover, when we restricted the analyses to the patients who did not receive BCG immunotherapy, the discrimination of the EORTC tables increased for both disease recurrence and progression.

Due to the limitations in the designing of the EORTC tables and to improve prediction of outcomes in BCG-treated patients, the CUETO group developed a separate scoring model. Based on calculations of concordance indices, the authors found that disease recurrence and progression predictions were lower than those reported by Sylvester *et al* (2006). We performed the first, to date, external validation of this scoring model. While, it was not designed for patients without BCG, we evaluated its performance in predicting disease recurrence and progression in our overall cohort of patients, which included only 11% of BCG-treated patients. Not surprisingly, the discriminative ability of this model was significantly lower than that of the original study (Sylvester *et al*, 2006). Moreover, this scoring model exhibited poor calibration for both disease recurrence and progression. To better evaluate its discrimination, we restricted our analyses to BCG-treated patients. While the discrimination of this score improved, we found that it still overestimated the risk of disease progression. Regarding the prediction of disease progression, there was no definite difference between the values presented by the EORTC risk tables and the CUETO scoring model. Both overestimated the progression rates in our cohort. Several studies that have compared BCG therapy and intravesical chemotherapy failed to find a difference between BCG therapy and intravesical chemotherapy in preventing disease progression (Lundholm *et al*, 1996; Shelley *et al*, 2004). Additional factors not included in the EORTC or the CUETO models could be added to new prognostic models to enhance their usefulness. Lymphovascular invasion has been proven to be associated with poorer outcomes (Kunju *et al*, 2008; Streeper *et al*, 2009). Moreover, molecular factors or grading could also be of interest (van Rhijn *et al*, 2010).

Our study is not devoid of limitations such as its multicentre and retrospective study design. We did not control for treatment delay, effect of repeat TURB, quality of the TURB, and prognostic

factors such as lymphovascular invasion. In particular, given the heterogeneous treatment pattern across centres, it is difficult to ascertain whether patients and which patients received re-TURB, a treatment that is instrumental in the proper management of some high-risk NMIBC. Similarly, we could not ascertain the number of patients who completed adjuvant intravesical instillation therapy. These limitations could have impacted the occurrence of events such as disease recurrence and progression. In addition, we could not adjust for the number and experience of surgeons and pathologists at each institution; no central pathology review was performed, possibly leading to differences in patients' treatment strategies. However, all surgeons and pathologists operated at tertiary care centres with experience in UCB. Comorbidities might also have influenced the decision making regarding surgical therapy, introducing a selection bias. However, this series comprise a contemporary and large sample size cohort, which are definitely strengths of the study.

CONCLUSION

The EORTC risk tables and the CUETO scoring system exhibit a poor discrimination for both disease recurrence and progression in NMIBC patients. These models overestimated the risk of disease recurrence and progression in high-risk patients. These overestimations remained in BCG-treated patients, especially for the EORTC tables. These results underline the need for improving our current predictive tools. Our study is limited by its retrospective and multi-institutional design.

REFERENCES

- Babjuk M, Oosterlinck W, Sylvester R, Kaasinen E, Bohle A, Palou-Redorta J, Roupret M (2011) EAU guidelines on non-muscle-invasive urothelial carcinoma of the bladder, the 2011 update. *Eur Urol* 59(6): 997–1008.

- Bohle A, Bock PR (2004) Intravesical Bacille Calmette-Guerin versus mitomycin C in superficial bladder cancer: formal meta-analysis of comparative studies on tumor progression. *Urology* **63**(4): 682–686; discussion 686–7.
- Burger M, Oosterlinck W, Konety B, Chang S, Gudjonsson S, Pruthi R, Soloway M, Solsona E, Sved P, Babjuk M, Brausi MA, Cheng C, Comperat E, Dinney C, Otto W, Shah J, Thüroff J, Witjes JA (2012) ICUD-EAU international consultation on bladder cancer 2012: non-muscle-invasive urothelial carcinoma of the bladder. *Eur Urol* **63**(1): 36–44.
- Fernandez-Gomez J, Madero R, Solsona E, Unda M, Martinez-Piñero L, Gonzalez M, Portillo J, Ojea A, Pertusa C, Rodriguez-Molina J, Camacho JE, Rabadan M, Astobieta A, Montesinos M, Isorna S, Muntanola P, Gimeno A, Blas M, Martinez-Piñero JA (2009) Predicting nonmuscle invasive bladder cancer recurrence and progression in patients treated with Bacillus Calmette-Guerin: the Cueto Scoring Model. *J Urol* **182**(5): 2195–2203.
- Fernandez-Gomez J, Madero R, Solsona E, Unda M, Martinez-Piñero L, Ojea A, Portillo J, Montesinos M, Gonzalez M, Pertusa C, Rodriguez-Molina J, Camacho JE, Rabadan M, Astobieta A, Isorna S, Muntanola P, Gimeno A, Blas M, Martinez-Piñero JA. Club Urológico Español de Tratamiento Oncológico (2011) The EORTC tables overestimate the risk of recurrence and progression in patients with non-muscle-invasive bladder cancer treated with Bacillus Calmette-Guerin: external validation of the EORTC risk tables. *Eur Urol* **60**(3): 423–430.
- Hernandez V, De La Pena E, Martin MD, Blazquez C, Diaz FJ, Llorente C (2011) External validation and applicability of the EORTC risk tables for non-muscle-invasive bladder cancer. *World J Urol* **29**(4): 409–414.
- Kunju LP, You L, Zhang Y, Daignault S, Montie JE, Lee CT (2008) Lymphovascular invasion of urothelial cancer in matched transurethral bladder tumor resection and radical cystectomy specimens. *J Urol* **180**(5): 1928–1932; discussion 1932.
- Lundholm C, Norlén BJ, Ekman P, Jahnson S, Lagerkvist M, Lindeborg T, Olsson JL, Tveter K, Wijkstrom H, Westberg R, Malmström PU (1996) A randomized prospective study comparing long-term intravesical instillations of mitomycin C and bacillus calmette-guerin in patients with superficial bladder carcinoma. *J Urol* **156**(2 Pt 1): 372–376.
- Malmstrom PU, Sylvester RJ, Crawford DE, Friedrich M, Krege S, Rintala E, Solsona E, Di Stasi SM, Witjes JA (2009) An individual patient data meta-analysis of the long-term outcome of randomised studies comparing intravesical mitomycin C versus Bacillus Calmette-Guerin for non-muscle-invasive bladder cancer. *Eur Urol* **56**(2): 247–256.
- Rink M, Fajkovic H, Cha EK, Gupta A, Karakiewicz PI, Chun FK, Lotan Y, Shariat SF (2012) Death certificates are valid for the determination of cause of death in patients with upper and lower tract urothelial carcinoma. *Eur Urol* **61**(4): 854–855.
- Seo KW, Kim BH, Park CH, Kim CI, Chang HS (2010) The efficacy of the EORTC scoring system and risk tables for the prediction of recurrence and progression of non-muscle-invasive bladder cancer after intravesical Bacillus Calmette-Guerin instillation. *Korean J Urol* **51**(3): 165–170.
- Shelley MD, Wilt TJ, Court J, Coles B, Kynaston H, Mason MD (2004) Intravesical Bacillus Calmette-Guerin is superior to mitomycin C in reducing tumour recurrence in high-risk superficial bladder cancer: a meta-analysis of randomized trials. *BJU Int* **93**(4): 485–490.
- Siegel R, Naishadham D, Jemal A (2013) Cancer Statistics, 2013. *CA Cancer J Clin* **63**(1): 11–30.
- Stenzl A, Hennenlotter J, Schilling D (2008) Can we still afford bladder cancer? *Curr Opin Urol* **18**(5): 488–492.
- Streeper NM, Simons CM, Konety BR, Muirhead DM, Williams RD, O'Donnell MA, Joudi FN (2009) The significance of lymphovascular invasion in transurethral resection of bladder tumour and cystectomy specimens on the survival of patients with urothelial bladder cancer. *BJU Int* **103**(4): 475–479.
- Sylvester RJ, van der Meijden AP, Oosterlinck W, Witjes JA, Bouffieux C, Denis L, Newling DW, Kurth K (2006) Predicting recurrence and progression in individual patients with stage Ta T1 bladder cancer using eortc risk tables: a combined analysis of 2596 patients from seven EORTC trials. *Eur Urol* **49**(3): 466–5discussion 475–477.
- Sylvester RJ, van der Meijden AP, Lamm DL. Intravesical Bacillus Calmette-Guerin reduces the risk of progression in patients with superficial bladder cancer: a meta-analysis of the published results of randomized clinical trials (2002) *J Urol* **168**(5): 1964–1970.
- van Rhijn BW, Zuiverloon TC, Vis AN, Radvanyi F, van Leenders GJ, Ooms BC, Kirkels WJ, Lockwood GA, Boevé ER, Jöbsis AC, Zwarthoff EC, van der Kwast TH (2010) Molecular grade (Fgfr3/Mib-1) and EORTC risk scores are predictive in primary non-muscle-invasive bladder cancer. *Eur Urol* **58**(3): 433–441.

This work is published under the standard license to publish agreement. After 12 months the work will become freely available and the license terms will switch to a Creative Commons Attribution-NonCommercial-Share Alike 3.0 Unported License.