

Supplemental Online Content

Zhu R, Wang R, He J, et al. Prevalence of cardiovascular-kidney-metabolic syndrome stages by social determinants of health. *JAMA Netw Open*. 2024;7(11):e2445309.
doi:10.1001/jamanetworkopen.2024.45309

eFigure 1. Flow Chart of the Study Population

eFigure 2. Prevalence (95% CI) of Advanced Cardiovascular-Kidney-Metabolic Syndrome Stages by Social Determinants of Health, NHANES 2011-2018

eFigure 3. Decision Tree Created Using the Chi-Squared Automatic Interaction Detection Model for Cardiovascular-Kidney-Metabolic Syndrome Stages, NHANES 1999-2018

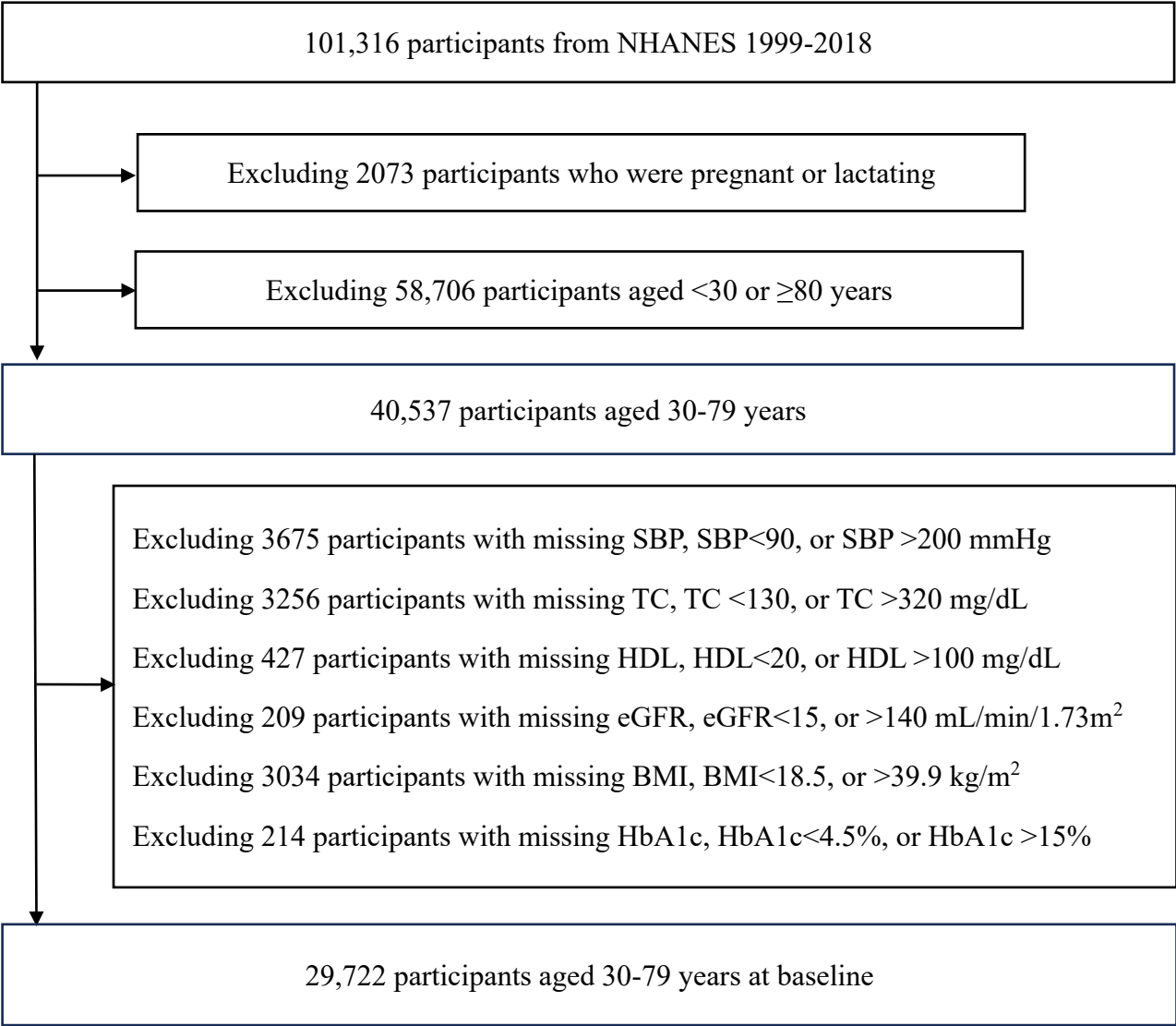
eFigure 4. Prevalence (95% CI) of Advanced Cardiovascular-Kidney-Metabolic Syndrome Stages by Social Determinants of Health Among Males and Females, NHANES 2011-2018

eFigure 5. Decision Tree Created Using the Chi-Squared Automatic Interaction Detection Model for Advanced vs Nonadvanced Cardiovascular-Kidney-Metabolic Syndrome Stages, NHANES 1999-2018

eFigure 6. Decision Tree Created Using the Chi-Squared Automatic Interaction Detection Model for Advanced vs Nonadvanced Cardiovascular-Kidney-Metabolic Syndrome Stages, NHANES 2011-2018

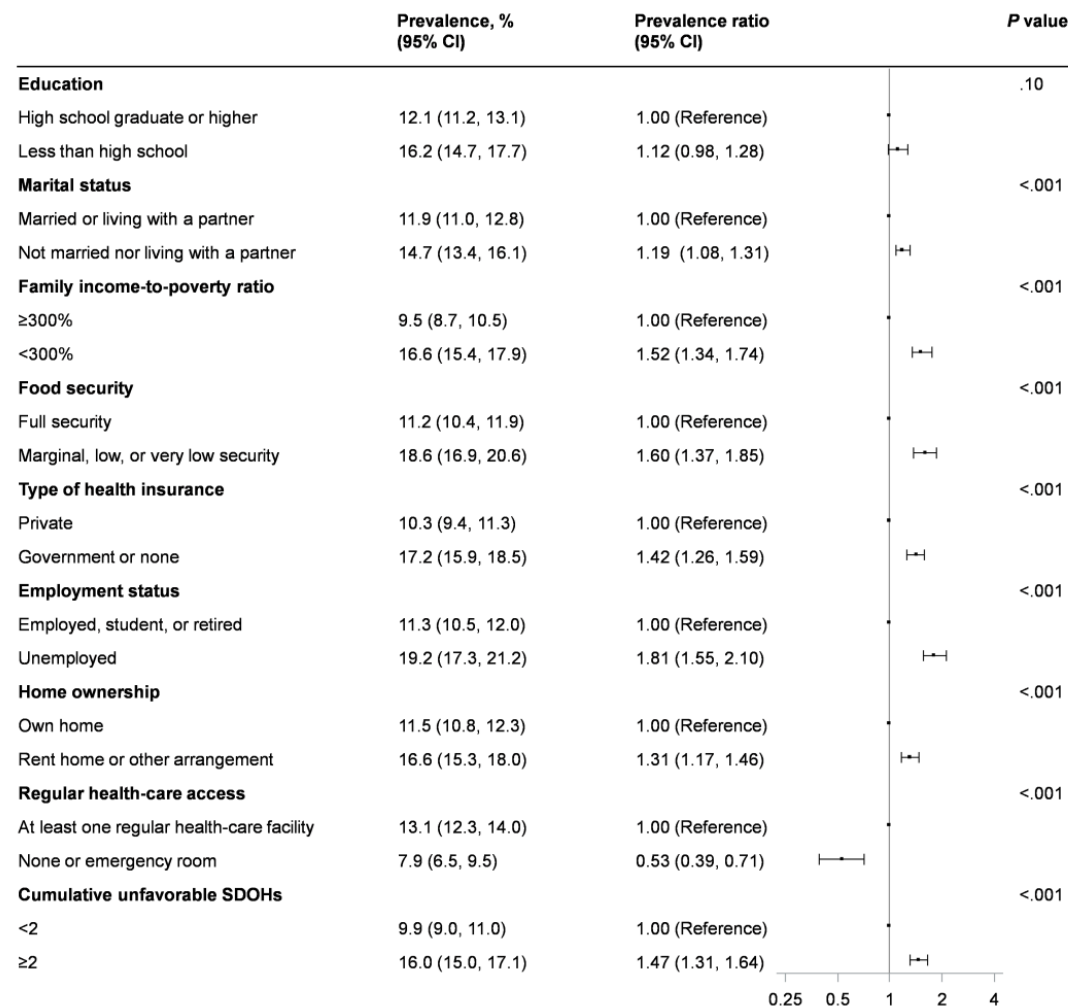
This supplemental material has been provided by the authors to give readers additional information about their work.

eFigure 1. Flow Chart of the Study Population



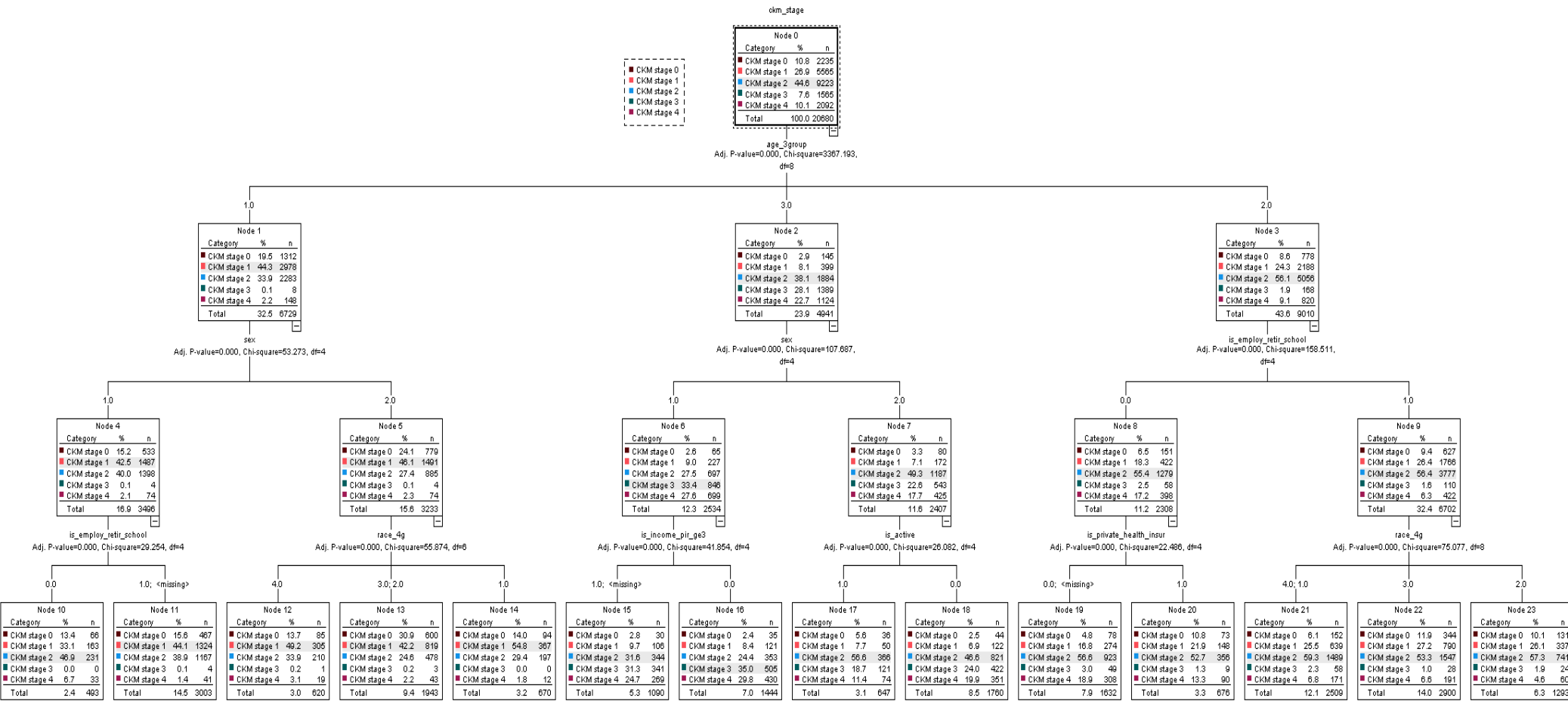
Abbreviations: BMI, body mass index; eGFR, estimated glomerular filtration rate; HbA1c, glycosylated hemoglobin A1c; HDL, high-density lipoprotein cholesterol; SBP, systolic blood pressure; TC, total cholesterol.

eFigure 2. Prevalence (95% CI) of Advanced Cardiovascular-Kidney-Metabolic Syndrome Stages by Social Determinants of Health, NHANES 2011-2018



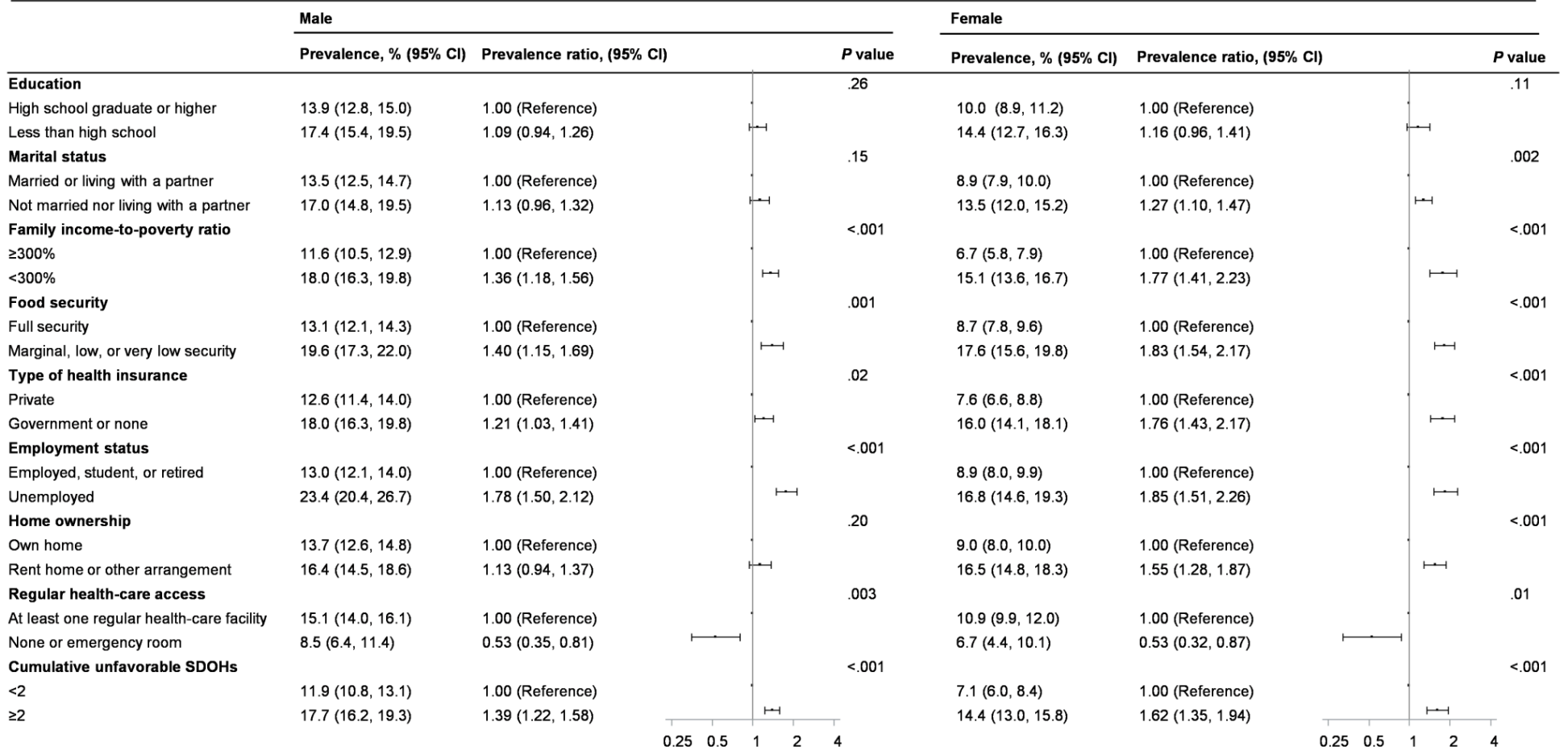
Abbreviations: CI, confidence interval; SDOHs, social determinants of health. Survey-weighted modified Poisson regression models adjusted for baseline age, sex, race/ethnicity, alcohol consumption, smoking status, and physical activity were used.

eFigure 3. Decision Tree Created Using the Chi-Squared Automatic Interaction Detection Model for Cardiovascular-Kidney-Metabolic Syndrome Stages, NHANES 1999-2018



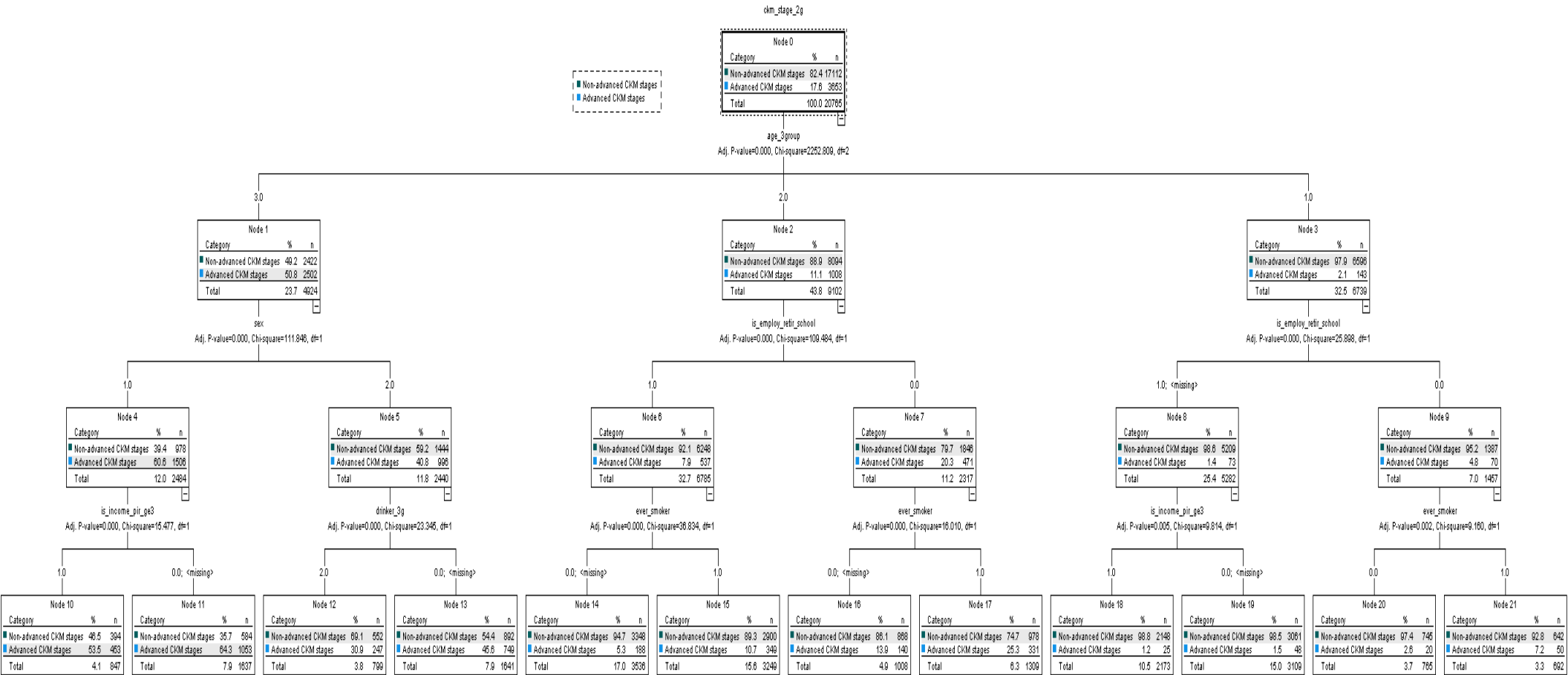
Abbreviation: CKM, cardiovascular-kidney-metabolic syndrome.

eFigure 4. Prevalence (95% CI) of Advanced Cardiovascular-Kidney-Metabolic Syndrome Stages by Social Determinants of Health Among Males and Females, NHANES 2011-2018



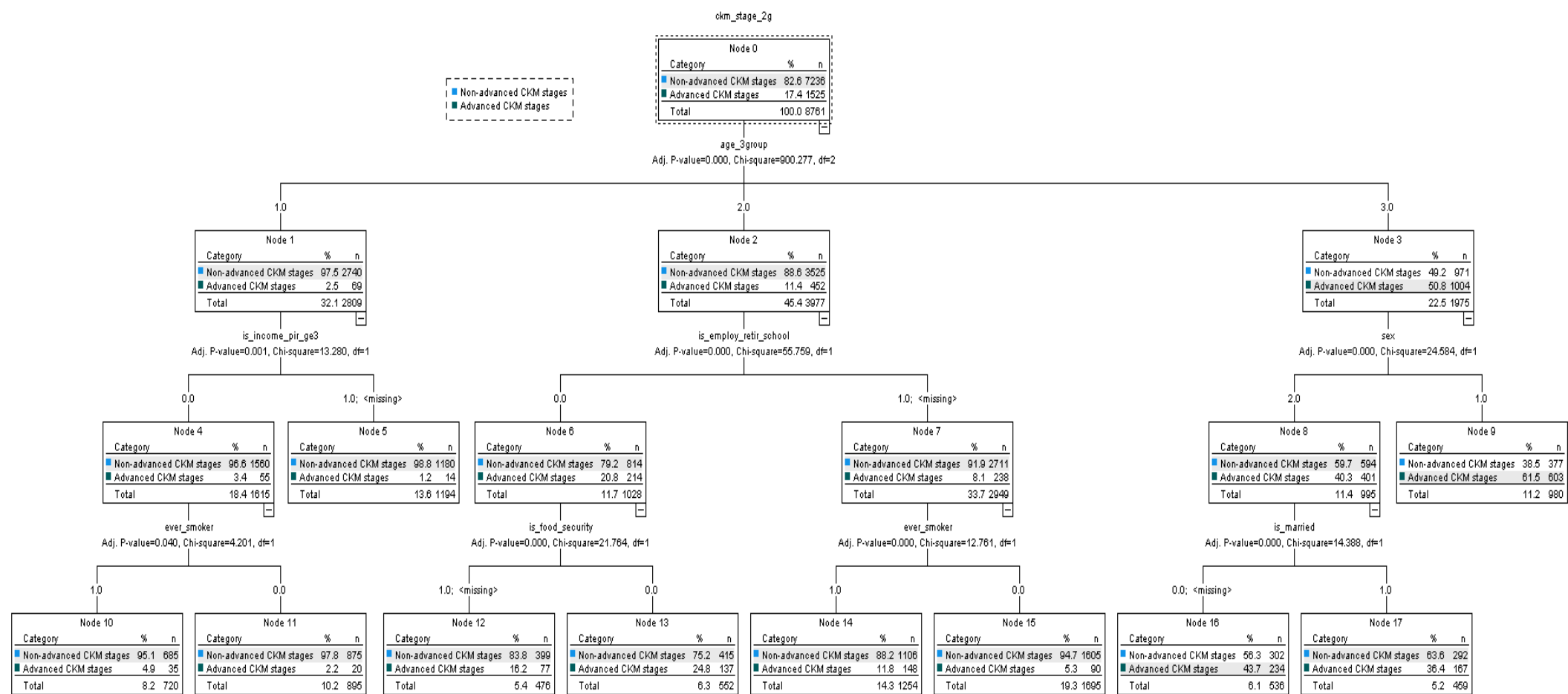
Abbreviations: CI, confidence interval; SDOHs, social determinants of health. Survey-weighted modified Poisson regression models adjusted for baseline age, race/ethnicity, alcohol consumption, smoking status, and physical activity were used.

eFigure 5. Decision Tree Created Using the Chi-Squared Automatic Interaction Detection Model for Advanced vs Nonadvanced Cardiovascular-Kidney-Metabolic Syndrome Stages, NHANES 1999-2018



Abbreviation: CKM, cardiovascular-kidney-metabolic syndrome.

eFigure 6. Decision Tree Created Using the Chi-Squared Automatic Interaction Detection Model for Advanced vs Nonadvanced Cardiovascular-Kidney-Metabolic Syndrome Stages, NHANES 2011-2018



Abbreviation: CKM, cardiovascular-kidney-metabolic syndrome.