



Endothelial dysfunction and cardiovascular disease

R. Jay Widmer*, Amir Lerman

Division of Cardiovascular Diseases,
Department of Internal Medicine,
Mayo Clinic and College of Medicine,
Rochester, MN 55905, USA

*Email: Widmer.Robert@mayo.edu

INTRODUCTION

The endothelium, by area alone, is one of the largest organs in the body comprised of up to trillion cells, weighing over 1 kg, and covering nearly 3 m² in a 70 kg male.^{1,2} Moreover, it interacts with nearly every system in the body, and has been implicated in end organ diseases of systems such as neurologic, renal, hepatic, vascular, dermatologic, immunologic, and of course cardiac. The endothelium is a single vessel layer standing as the ultimate layer between blood and vascular supply to other tissues, and serving multiple purposes. The first and foremost is a hemostatic balance between thrombosis and anticoagulation via a careful series of checks and balances discussed below. Additionally, the endothelium regulates vascular tone, carefully balancing vasoconstriction and vasodilation to provide adequate perfusion pressure to target organs. Other functions include regulation of angiogenesis, wound healing, smooth muscle cell proliferation, fibrosis, and inflammation. Factors that adversely affect the endothelium include common cardiovascular risk factors such as tobacco use, obesity, age, hypertension, hyperlipidemia, physical inactivity, and poor dietary habits. Alternatively, factors that positively impact the function of the endothelium are, essentially, beneficial lifestyle habits opposite to those mentioned above such as increased physical activity, dietary habits which include anti-inflammatory and anti-oxidant foods, and some pharmaceutical agents such as L-Arginine.

Presently there is no guideline directive – either pro or con – to routinely include endothelial function testing in cardiovascular disease (CVD) risk assessment.^{3–5}

ENDOTHELIAL PHYSIOLOGY

Under basal conditions, the endothelium functions to maintain the vessel in a relatively neutral state favoring dilatation over constriction. However, the endothelium has the capacity to respond to various intrinsic physical stimuli, such as shear stress, temperature, transmural pressure, and external stimuli such as temperature, mental stress, neurohumoral responses, and medications among others. The endothelial-dependent response to vasodilate is principally regulated in response to shear stress by a release of nitric oxide (NO) synthesized from the amino acid L-arginine by endothelial nitric oxide synthase (eNOS) which leads to the production of intracellular cyclic GMP.⁶ In such a state when NO-mediated vasodilation is compromised, the vasodilatory response is thought to be facilitated by cytochrome-derived factors, naturetic peptide, and prostacyclin.

Dysfunctional endothelium is seen when there is an imbalance in NO production and consumption, favoring consumption and reduced production. Such a pathologic state creates favorable conditions for platelet plus leukocyte activation and adhesion, as well as the activation of cytokines that increase the permeability of the vessel wall to oxidized lipoproteins and inflammation mediators, finally resulting in structural damage of the arterial wall with smooth muscle cell proliferation and atherosclerotic plaque formation.

Endothelial dysfunction is usually ubiquitous throughout the body as patients with known atherosclerosis also have endothelial dysfunction in peripheral vascular beds that may not be affected by frank atherosclerosis. Endothelial dysfunction is also seen in patients with a family history of early

[http://dx.doi.org/
10.5339/gcsp.2014.43](http://dx.doi.org/10.5339/gcsp.2014.43)

Submitted: 11 July 2014
Accepted: 11 September 2014
© 2014 Widmer, Lerman, licensee
Bloomsbury Qatar Foundation
Journals. This is an open access
article distributed under the terms
of the Creative Commons
Attribution license CC BY 4.0, which
permits unrestricted use,
distribution and reproduction in any
medium, provided the original work
is properly cited.

CVD and no other risk factors,⁷ hypertriglyceridemia,⁸ elevated LDL and reduced HDL cholesterol,⁹ nicotine use,¹⁰ obese patients with minimal coronary artery disease (CAD),¹¹ patients with insulin resistant,^{12,13} patients with first degree relatives with DM2,¹⁴ cardiac syndrome X,¹⁹ elderly patients^{15,16} irrespective of other comorbidities,¹⁷ and mental stress^{18,19} which is thought to be mediated through endothelin.²⁰ The progression of endothelial dysfunction is related to the intensity and duration of proven risk factors, and to the total risk of the individual subjects.^{21,22}

The impact of endothelial dysfunction typically manifests in frank atherosclerosis requiring either percutaneous or surgical revascularization. Data from our group has demonstrated that in a multi-center study, peripheral endothelial dysfunction is seen in nearly 75% of patients following PCI [Widmer, R], et al. 2014. *In Review*]. Endothelial dysfunction appears to result from reduced levels of NO bioavailability,²³ and largely related to baseline risk factors, thus making it an attractive alternative metric to monitor for secondary prevention.²⁴ Furthermore, peripheral endothelial dysfunction in patients following PCI is a known predictor of restenosis.²⁵ Surgical revascularization is also associated with endothelial dysfunction and can be assessed properly by reactive hyperemia or laser Doppler.²⁶ Patients who recently underwent CABG have reduced endothelial function largely related to poor NO bioavailability and poor glycemic control.²⁷

Other cardiovascular entities can also cause reduced endothelial function as microvascular disease is seen in patients with cardiac amyloidosis.²⁸ Moreover, endothelial dysfunction can serve as a prognostic indicator in children with familial cardiomyopathies.²⁹ Finally, myocardial bridging is closely associated with coronary endothelial dysfunction which can be detected by fractional flow reserve.³⁰

Abnormal endothelial function is attributed to high oxidative stress and inflammation – both processes lead to abnormal NO metabolism (bioavailability, use/response, production, release, and degradation), which can be exacerbated with other conditions (cold, mental stress, anger) that are known to produce a global vasoconstriction. Increased oxidative stress is characterized by a measurable increase in reactive oxygen species (ROS) which can result from impaired NO synthase, decreased L-arg uptake, increased oxidized LDL cholesterol (Ox-LDL),³¹ or reduced superoxide dismutase (SOD) an enzyme pivotal in the clearing of ROS.³² Hyperlipidemia is known to increase ROS which will reduce the bioavailability of NO, yet can be ameliorated with correction of hyperlipidemia.³³ Another potential contributor to impaired NO bioavailability is a decrease in tetrahydrobiopterin (THB).^{34,35} Furthermore, replenishing THB stores appears to improve endothelial dysfunction, even in hyperlipidemic patients.³⁶ Another potential contributor to endothelial dysfunction is elevated asymmetric dimethylarginine (ADMA) which is an endogenous competitive inhibitor of NO.^{37,38} ADMA has been linked to reduced endothelial function as well as erectile dysfunction in patients at moderate risk for CVD.³⁹ Furthermore, Ox LDL can increase ADMA further compounding known risk factors in patients with CAD^{4,30} even leading to increased events in those found to have elevated levels of ADMA.⁴⁰ Finally, low-flow vascular states such as reduced cardiac output which reduces endothelial shear stress in conditions such as heart failure – possibly from reduced L-arginine,⁴¹ or with other vascular injury or occlusion can contribute to an alteration in bioavailable NO and varying endothelial function.⁴²

Localized infection, particularly in the oral cavity, leading to increased systemic inflammation and impaired endothelial function has been postulated to be a contributor to CVD. Chlamydia pneumonia infections⁴³ and immediate systemic inflammatory states which would mirror sepsis⁴⁴ have been shown to increase global inflammatory markers and endothelial dysfunction. Furthermore, H. pylori positive patients have reduced endothelial function ameliorated by treatment.⁴⁵ However, global treatments with antibiotics in high risk patients show no benefit on CVD outcomes.^{46,47}

External beam radiation⁴⁸ and chemotherapy (particularly doxorubicin and daunorubicin⁴⁹) have been shown to reduce endothelial function in patients independent of other risk factors presumably through endothelial cell death and reduced NO availability.

Endothelial dysfunction is also associated with the development of transplant vasculopathy. In a study of 73 patients who underwent heart transplantation, the presence of endothelial dysfunction predicted the development of clinical end points, including angiographic vasculopathy or cardiac death (graft failure or sudden death).⁵⁰

- The endothelium makes up one of the largest organ systems in the body by surface area.
- Normal endothelial function allows for the symbiotic balance between vasoconstrictive and vasodilatory (namely via NO) stimuli to allow adequate end organ blood perfusion.

- A disruption in normal endothelial physiology through a number of various mechanisms causes endothelial dysfunction – a progenitor toward atherosclerosis and a predictor of future cardiovascular events.

ENDOTHELIAL DYSFUNCTION PREVALENCE

The true prevalence of peripheral endothelial function worldwide is not fully known as we only have samples of larger studies which assess peripheral endothelial function in different methods and without specific guidelines regarding cut-off values for which a patient's endothelium is considered dysfunctional. Older observations demonstrate that nearly 60% of community-dwelling participants who undergo coronary angiography and are found to have non-obstructive CAD.⁵¹

Similarly, the WISE study found that roughly 50% of those undergoing clinically indicated coronary angiography, but without obstructive disease were found to have coronary endothelial dysfunction.⁵² Peripheral endothelial dysfunction, depending on the defined cutoff value defining such, can be found in up to 75% in those presenting with acute coronary syndrome (ACS) and undergoing percutaneous coronary intervention (PCI) for such [Widmer R], et al. 2014. *In Review*].

Other systemic disorders known to be characterized by endothelial dysfunction include transplant vasculopathy,⁵⁰ autoimmune diseases,⁵³ gastrointestinal disorders such as celiac disease and irritable bowel syndromes,^{54,55} hematologic/oncologic survivors,⁵⁶ cryptogenic stroke,⁵⁷ and neurocognitive disorders.⁵⁸

- Currently there is a wide range of reported prevalence of both coronary and peripheral endothelial dysfunction secondary to the heterogeneity of the studies examining the phenomenon and arbitrary cutoff values.
- Endothelial dysfunction is prevalent in CVD, however can also be found in patients with neurologic, gastrointestinal, rheumatologic, hematologic, and renal diseases.

TYPES OF ENDOTHELIAL FUNCTION TESTING

The quantification of endothelial health has commonly been divided into peripheral endothelial function – a systemic measure of endothelial function – versus coronary endothelial function, which must be assessed with invasive angiography. Testing involves pharmacological and/or physiological stimulation of the endothelial release of NO and other vasoactive substances. All the techniques have in common that they measure the response of the vessels to endothelial-dependent stimuli, mainly reactive hyperemia (shear stress) or vasoactive substances. Indeed, both macrovascular endothelial dysfunction, as measured by flow-mediated dilation,^{59,60} and microvascular endothelial dysfunction,^{61,62} have been found to be independent predictors of future cardiovascular events in large cohort studies in healthy individuals over and above traditional risk factor assessment. Endothelial function testing modalities have also been found to correlate with other novel cardiovascular testing modalities such as coronary calcium scoring.^{63,64}

Invasive endothelial function testing (coronary)

Quantitative coronary angiography can be used to directly and invasively examine the change in diameter in response to intracoronary infusions of endothelium-dependent vasodilators such as acetylcholine.^{65,66} In healthy coronary epicardial and microvascular vessels, acetylcholine generates an NO-mediated vasodilatory response quantitatively assessed by angiography or intravascular ultrasound (IVUS). In patients with endothelial dysfunction, this effect is blunted or vasoconstriction is paradoxical. Endothelial function of the coronary microvasculature can be assessed with intracoronary Doppler techniques to measure coronary blood flow in response to pharmacological (usually intracoronary adenosine or nitroprusside) or physiological stimuli.

Noninvasive tests for assessment of coronary endothelial function include Doppler echocardiography, positron emission tomography, and phase-contrast magnetic resonance imaging. In patients without obstructive coronary artery disease but impaired coronary vasodilatory capacity in the face of a vasodilator challenge, there is a marked increase in CVD events over the subsequent two years.⁶⁶ This notion was furthered in a similar experiment following patients for nearly 8 years showing a 20–40% reduction in survival over the subsequent 7.7 years depending on their coronary vascular reactivity to any certain number of stimuli.⁶⁷

Invasive coronary vasoactive testing can also be important in patients with known CAD as a sub-study of the COURAGE trial evaluated the fractional flow reserve (FFR) to differentiate between coronary lesions causing ischemia, and blockages not causing ischemia.⁶⁸ The study showed that patients with ischemic blockages who were treated with revascularization had a long-term significant improvement in comparison with those who were only given medical intervention. In another multicenter study, patients with multi-vessel coronary artery diseases who underwent invasive interventions (PCI) with drug-eluting stents that were guided by FFR results had a significant reduction in the rate of the composite end-point of death, myocardial infarction, and target vessel revascularization at one year post-intervention.⁶⁹ Another example of the efficacy of the FFR test can be seen in a study that showed an almost 43% potential reduction in the need for bypass surgery in patients who underwent FFR after having a coronary angiogram.⁷⁰ It is therefore very important to examine the individual contribution to the physiology of an ischemic lesion, and not just its anatomy.

A similar method, but based on slightly different physical properties, by which to test coronary microcirculatory function deals with thermodilution and index of microcirculatory resistance (IMR). This technique is similar to pharmacological and pressure-based techniques, but in this case using intracoronary temperature measurements to approximate flow.⁷¹ This has been shown to be independent of epicardial vascular function, reproducible, and has even been evaluated in STEMI patients, providing important prognostic information regarding ventricular function at three months.⁷²

Non-invasive endothelial function testing (arterial)

Brachial artery ultrasound is a commonly used and widely accepted measure of peripheral macrovascular endothelial function.⁷³ In this test, inflating a blood pressure cuff at suprasystolic pressures for 5 minutes occludes the upper arm proximal to the ultrasound measurement. Upon the release of the occlusion, an increase in shear stress results in an endothelial-dependent, NO-driven, flow-mediated dilation (FMD) of the brachial artery. Both diameter and blood velocity are assessed before and after occlusion with results being reported as a percent change from baseline. These measurements should be made at the end of diastole. The reported vascular response to increased flow has been shown to be a surrogate for measuring coronary endothelial function.⁷⁴

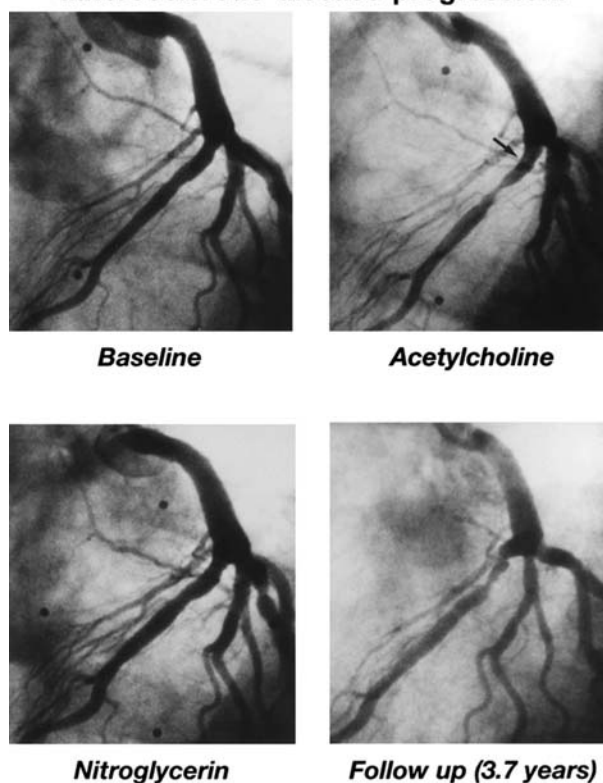
Aside from reactive hyperemia, stimuli for measuring endothelial reactivity can include exercise, mental stress, or sympathetic nervous activation through the cold pressor test. As will all vascular reactivity tests, brachial artery ultrasound measurements can be potentially confounded by such conditions such as the amount, type, and time after food consumption; medications; exercise; ambient temperature; menstrual cycle stage; type of machinery and equipment; and variations in the protocol between subjects or experiments (supine, dark room, thermo-neutral settings). Furthermore, occlusions made too proximal can exacerbate the FMD response creating a potential for false negative results.⁷⁵

Observational data from the MESA study demonstrates that peripheral endothelial dysfunction as measured by FMD of the brachial artery is associated with a higher rate of incident adverse CVD events during a five-year follow-up period.⁵⁹ FMD has been linked with increased CVD risk in those patients with known CVD risk factors.⁷⁶ Furthermore, data from a recent meta-analysis provides evidence that FMD could be used as an independent prognostic indicator of future CVD events and offers incremental risk factor stratification in addition to traditional risk factors.⁷⁷ While some have recently argued that there is only minimal data that FMD adds to risk stratification,⁷⁸ a more overwhelming body of evidence argues for the use of FMD measurements to provide important additional CVD risk factor stratification and or response to therapies.^{79,80}

Impedance plethysmography is a method of assessing endothelial function via strain-gauge venous impedance plethysmography which examines the changes in forearm blood flow in response to direct intravascular administration of vascular agonists.⁸¹ Due to the invasive nature of this test it is primarily used in research settings, and rarely utilized clinically (Figures 1,2).

Low-flow-mediated constriction (L-FMC) quantitates the reaction in forearm conduit artery diameter occurring in response to a reduction in blood flow, and resultantly, shear stress.⁸² This method is similar to FMD measurements of the brachial artery, and is often used in concert to gain additional information regarding arterial reactivity⁸³ as L-FMC is a better measure of resting, basal arterial tone and thought to only be partially NO-mediated.⁸⁴ Exact mechanisms of this reaction are still being elucidated, and it is becoming increasingly important as the rate of radial interventional approaches increases.⁴² Nevertheless, the combination of these two measurements has been shown to be closely

Coronary vasoreactivity and atherosclerotic disease progression.



Schächinger V et al. *Circulation*. 2000;101:1899-1906

Figure 1. Coronary vasoreactivity and atherosclerotic disease progression. Top left shows baseline coronary angiogram of a patient in whom focal paradoxical vasoconstriction to acetylcholine occurred in the proximal left anterior descending artery (top right) at the time of the initial vasomotor testing (arrow indicates tip of acetylcholine infusion catheter). Injection of nitroglycerin (bottom left) demonstrates only minimal vasodilation and unmasks an atherosclerotic plaque at the site of paradoxical vasoconstriction to acetylcholine. During follow-up 3.7 years later, the patient was admitted to the hospital with an acute coronary syndrome. Coronary angiography revealed focal progression of atherosclerotic disease (bottom right) at the site of the initial paradoxical vasoconstriction to acetylcholine.

correlated to the severity of CAD,⁸⁵ and even provide additive risk factor stratification to traditional risk factors.^{86,87}

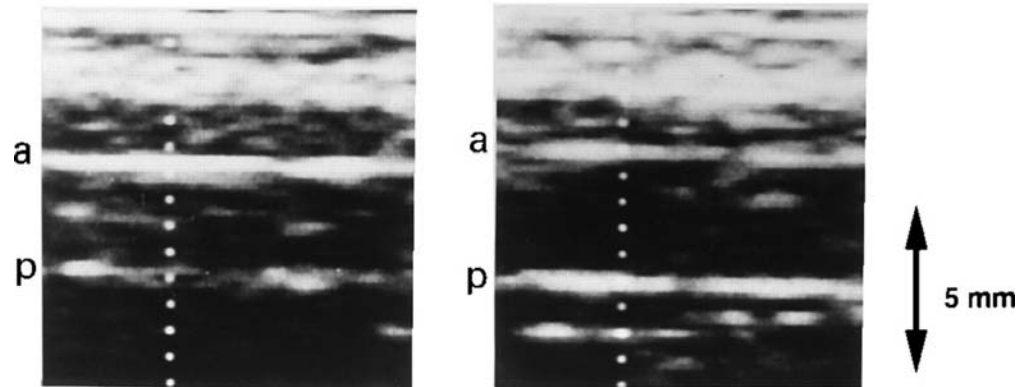
Peripheral arterial tonometry (PAT) is a technique commonly used to assess microvascular endothelial function via changes in finger pulse wave amplitude in response to reactive hyperemia.⁸⁸⁻⁹¹ Testing for endothelial function involves the inflation of a blood pressure cuff to supra-systolic pressures. During this process there are two PAT probes connected to the fingers in both arms. The probe that is connected to the arm where the blood pressure cuff is inflated for 5 minutes is used to assess the reactive hyperemic response, a surrogate and a marker for endothelial function. These methodologies are non-invasive, are designed to eliminate environmental interference, and are independent of the subject's knowledge and conscious control of signals generated.^{88,90} The RH-PAT index is defined as the ratio of the average pulsatile blood volume response, at timed intervals after deflation, to the baseline pulsatile blood volume response; i.e. the average amplitude of the RH-PAT signal over 60 seconds at 1, 2, 3 and 4 minutes after cuff deflation divided by the average amplitude of the RH-PAT signal over 3.5 minutes prior to cuff inflation (during baseline equilibration). A diagram of the PAT device is shown in [Figure 3](#).

Recent work has shown a correlation between endothelial function as measured through PAT, and the accepted standard of invasive assessment of endothelial dysfunction of the coronary arteries.⁹² Moreover, Goor et al. has demonstrated that there is a characteristic PAT signal response to mental stress, with diminution of the signal amplitude during stress.⁹⁰ However, this test is only thought to be partially dependent on NO,⁹³ with other factors such as the sympathetic nervous system thought to

Typical example of ultrasound scanning of brachial artery of a female subject in the F phase at rest (A) and during reactive hyperemia (B).

A. Rest

B. Reactive Hyperemia



Hashimoto M et al. *Circulation*. 1995;92:3431-3435

Figure 2. Typical example of ultrasound scanning of brachial artery of a female subject in the F phase at rest (A) and during reactive hyperemia (B). The diameter of the artery increased from 3.1 mm (A, rest) to 3.8 mm (B, reactive hyperemia) in response to increased blood flow. a indicates anterior wall of the brachial artery; p, posterior wall of the brachial artery.

affect the microvascular response to certain stimuli.⁹⁴ There are discordant reports as to the agreement between FMD and PAT as some reports highlight a discordance with PAT and FMD measurements,^{95,96} while others find an association between the two tests.⁹⁴ There still appears to be a strong contribution by NO to both physiologic responses leaving mechanistic work to resolve these discrepancies yet to be finished.⁹⁷

In addition to the endothelial function test being a predictive parameter for coronary disease onset, it can also predict the effectiveness of a treatment given to patients with cardiovascular disease. One study followed a group of hypertensive women without significant heart disease, and who followed a similar antihypertensive regimen. While all women had similar reductions in blood pressure, the individuals whose endothelial function improved had half as many cardiovascular events compared to those women who showed no improvement in endothelial function.⁹⁸ Similarly, a high-risk group of patients with significant coronary diseases were treated with optimal medical therapy and given standard medications prescribed for their disease. The patients underwent endothelial function tests at baseline and six months with improvement seen in 50% of the patients. Those with improved endothelial function had fewer cardiovascular events during the follow-up period whereas the group that did not have improved endothelial function had an increased CVD event rate.⁹⁹

Additional observational data examining microvascular endothelial function with PAT demonstrates people with relatively normal risk factors, but reduced endothelial function, had a higher incidence of heart disease, hospitalization, and death after seven years of follow-up as compared to those without

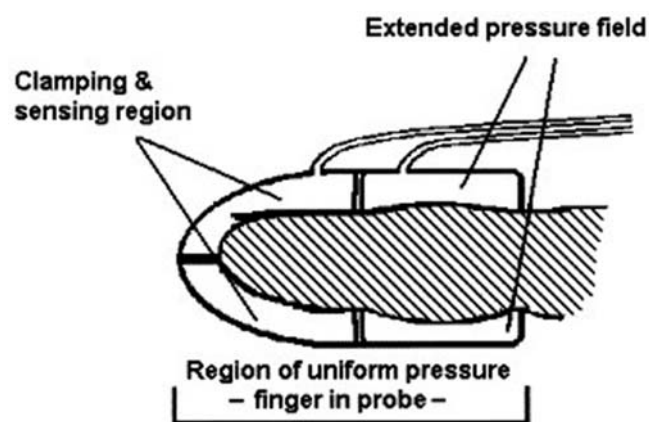


Figure 3A. Diagram of PAT device on digit.

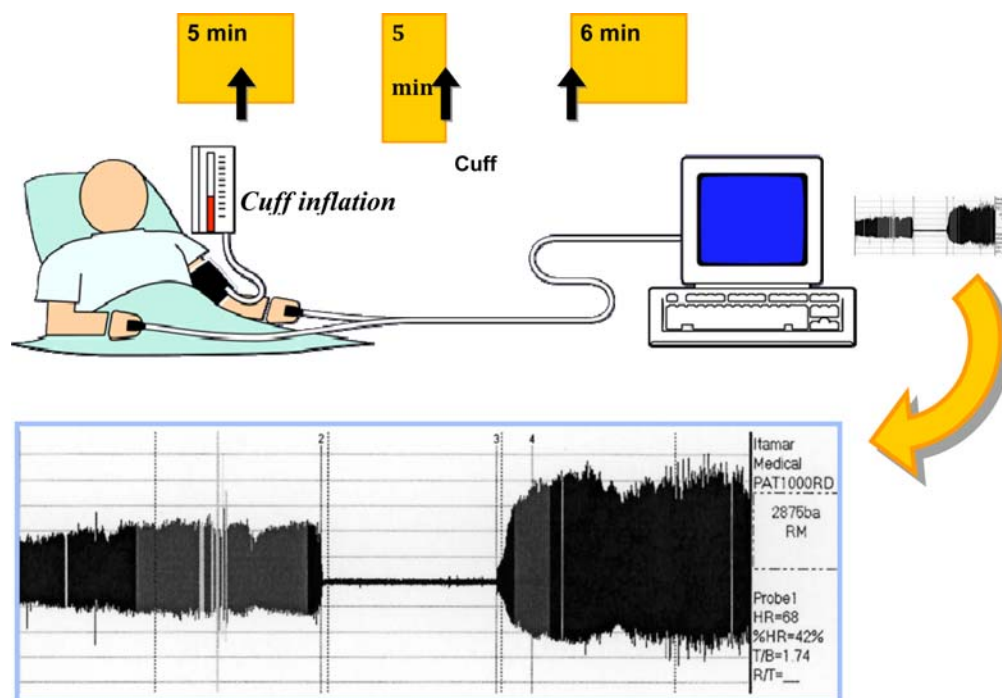


Figure 3B. Diagram of RH-PAT protocol set-up.

endothelial dysfunction.¹⁰⁰ Intuitively, those with a high Framingham risk score and endothelial dysfunction were at the greatest risk, followed by those with a normal Framingham score but with endothelial dysfunction, and then those with a high Framingham score but with normal endothelial function.¹⁰⁰ Finally, those patients already with obstructive CAD, PAT can predict future adverse CVD outcomes.⁹⁹

Other non-invasive measures of endothelial function

Measures of venous endothelial function are used as the pathogenesis of arterial and venous clots share the characteristic of endothelial dysfunction in conditions favorable for generation and as 70% of the circulating blood is contained within the venous system. However, this is seldom used clinically, as the techniques typically involve difficult measures that lack reproducibility such as the dorsal vein technique and radionuclide venous plethysmography. Thus, as patients who will have venous endothelial dysfunction typically have arterial endothelial dysfunction, we suggest using methods mentioned above (Figures 4–6).

Traditional imaging-based modalities have been clinically utilized and verified to assess microvascular function. Myocardial PET imaging has been tested using a cold pressor test in patients with diabetes,¹⁰¹ and verified in a larger cohort of patients.¹⁰² Furthermore, cardiac magnetic resonance perfusion has been correlated with endothelial dysfunction in patients without overt coronary artery disease¹⁰³ as well as those with typical angina but relatively normal angiograms.¹⁰⁴ However cost and limited availability of the resources necessary for such prevent widespread adoption of these modalities. Other measures of endothelial function are currently in various stages of use and design – mainly in the research realm. Measures of endothelial progenitor cells (EPCs) and subtypes which assist in endothelial repair and function have been associated with Framingham scores⁴⁵ and various measures of CVD.⁴⁶ Statins,⁴⁸ erythropoietin,⁴⁹ and exercise⁵⁰ all increase EPCs numbers and function. However, the exact subpopulation of beneficial EPC subtypes remains to be defined.

Genome wide array sequencing (GWAS), single nucleotide polymorphisms (SNPs), microRNAs (miRs), and even some urinary biomarkers have all been linked with various stages of endothelial dysfunction and early atherosclerosis, however these are not yet in clinical use (Table 1).

Urine microalbuminuria²¹ and others have also been studied as markers of endothelial function, however they are also not in clinical use.

Impaired coronary artery vasoreactivity predicts CV events

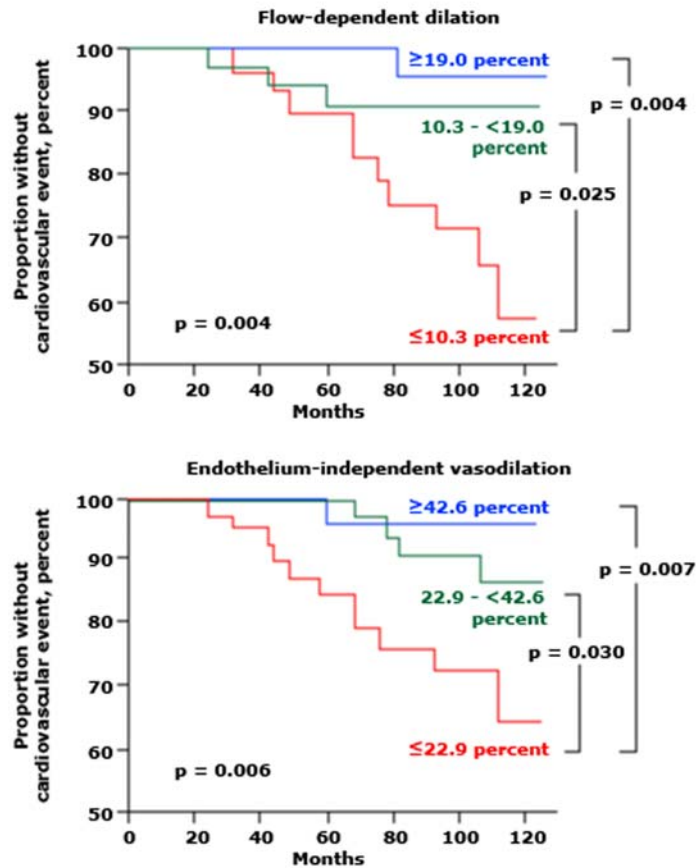


Figure 4A. Coronary artery vasoreactivity was evaluated in 147 patients with documented coronary heart disease (CHD) or risk factors for CHD; flow-dependent dilation, assessed with intracoronary papaverine or adenosine (upper panel), and flow-independent vasodilation, induced by nitroglycerin (lower panel), were divided into tertiles (percent arterial dilation). During a median follow-up of 6.7 years, impaired vascular reactivity was associated with a significantly higher cardiovascular event rate (cardiovascular death, unstable angina, myocardial infarction, revascularization, stroke, peripheral artery revascularization); the incidence of events was highest in those with the least dilation. Data from Schachinger V, Britten MB, Zeiher AM. *Circulation* 2000; 101:1899.

- Endothelial function can be tested in a variety of ways measuring both macrovascular endothelial function with brachial artery ultrasound as well as microvascular endothelial function with peripheral arterial tonometry.
- Macrovascular endothelial function is typically measured by flow-mediated dilation using ultrasound of the brachial artery measuring vascular reactivity to such stimuli as medications and reactive hyperemia.
- Low-flow-mediated constriction is a newer method of testing macrovascular function specifically focusing on the resting state of the endothelium in a non-NO-dependent manner.
- Microvascular endothelial function measures vascular reactivity to the same stimuli, however typically utilizing peripheral tonometry or pulse wave amplitude to approximate blood flow.
- There are no guideline-based recommendations to use endothelial function testing clinically, however, such tests can augment combined risk factor assessments in patients who may fall between two risk factor categories.

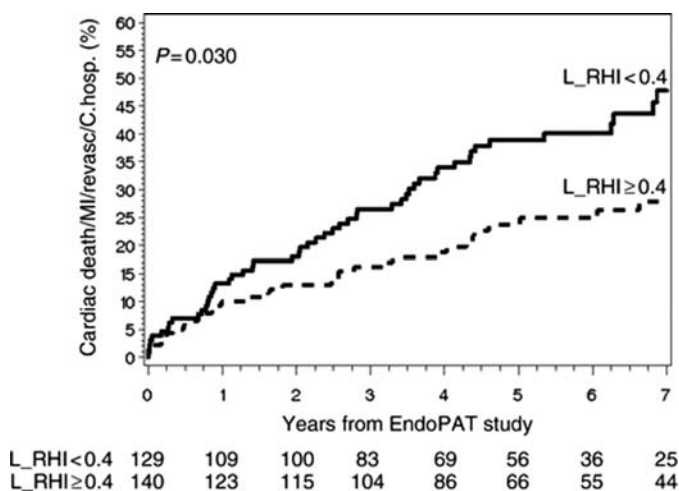


Figure 4B. Cardiovascular adverse events: a combination of cardiac death/myocardial infarction/coronary revascularization and cardiac hospitalizations in patients with and without low L_RHI (< 0.4).

Preoperative Risk Assessment – Assessment of endothelial function by brachial ultrasound has been used for preoperative risk stratification in patients undergoing vascular surgery.⁴¹ An FMD measurement for the purpose of perioperative risk stratification was assessed in a study of 187 patients undergoing high-risk (vascular) surgery. Low flow-mediated dilation was an independent predictor of a cardiac event at 30 days (odds ratio 9)⁴¹ and of late events at 1.2-year follow-up.¹⁰⁵

ENDOTHELIAL DYSFUNCTION TREATMENTS/THERAPIES

1. Life style modifications (diet, exercise, smoking, weight reduction ...)

Mediterranean diet – A low fat diet is usually the first step in treating hypercholesterolemia. A Mediterranean diet reduces serum LDL-cholesterol and lowers the risk of cardiovascular events in patients with a myocardial infarction. These benefits are associated with an improvement in endothelial function.^{123,124} These findings have been confirmed in a larger randomized controlled trial showing improved endothelial function in participants who adhered to the Mediterranean Diet and exercise.¹²⁵

Other Dietary Interventions – Recently, there has been a plethora of trail data showing that substances such as dark chocolate,¹²⁶ nuts,¹²⁷ olive oil,¹²⁸ plant-based foods,¹²⁹ green tea,¹³⁰ and alcohol consumption¹³¹ have all shown to be beneficial to improving peripheral endothelial function. Indeed, proper dietary measures should serve as a cornerstone toward improving endothelial function.

Aerobic exercise and weight loss – Regular aerobic exercise is associated with a reduced risk of cardiovascular events, especially in middle-aged and older adults; it also can modify many of the traditional risk factors for coronary disease, including endothelial dysfunction. Although there has been some debate over the initial endothelial response to exercise, the overall data has

Table 1. Factors that cause and interventions that improve endothelial dysfunction

Factors associated with endothelial dysfunction	Interventions that improve endothelial function
Increased age	L-arginine
Male sex	Antioxidants
Family history of CHD	Smoking cessation
Smoking	Cholesterol lowering
Increased serum cholesterol	ACE inhibitors
Low serum HDL-cholesterol	Exercise
Hypertension	Mediterranean Diet
Increased serum homocysteine	
Diabetes mellitus	
Obesity	
High-fat meal	

been positive toward this lifestyle behavior and endothelial function. As an example, one study of 68 healthy men, aged 22 to 35 and 50 to 76, who were either sedentary or endurance-exercise trained, found that endurance-trained men did not have an age-associated decline of endothelium-dependent vasodilation; in addition, regular aerobic exercise restored the loss of endothelium-dependent vasodilation in previously sedentary middle-aged and older healthy men.¹³² Weight loss alone has been shown to be beneficial to endothelial function.¹³³ Exercise has also been seen to improve endothelial function in such high risk patients as those with peripheral vascular disease¹³⁴ and heart failure.¹³⁵

Similarly, obesity has been linked with endothelial dysfunction,¹³⁶ and conversely weight loss is associated with a significant reduction in cytokine levels and an improvement in endothelial dysfunction.^{137,138}

2. NO pathway (L-arginine, PDE-I)

L-arginine – The intravenous or intracoronary administration of L-arginine, the physiologic precursor for NO, can acutely improve endothelium-dependent, but not endothelium-independent, vasodilation in patients with hypercholesterolemia or coronary atherosclerosis.⁹² L-arginine has been tested in multiple smaller, randomized, clinic trials, and shown to have benefits; however, the stereoisomer, D-arginine, is ineffective.⁹³ Additionally, a small randomized trial consisting of 30 patients appeared to show no benefit on multiple measures of endothelial health such as NO bioavailability, cell adhesion molecules, or brachial artery FMD with 9 g daily of L-arginine supplementation.⁹⁴ These patients, however, were on optimal medical therapy for CVD prevention.

In contrast, a similarly-sized trial showed that a similar dose of L-arginine after 6 months had a significant improvement in patients coronary endothelial function and resultantly improved anginal symptoms.⁹⁵ Additional work has shown short-term L-arginine supplementation to be of clinical benefit in a randomized study of 36 patients with stable class II and III angina. Compared to placebo, two weeks of therapy with a medical food bar enriched with L-arginine improved flow-mediated vasodilation, treadmill exercise time, and quality of life scores.⁹⁶

The most recent data regarding L-arginine and endothelial function appears to show that when given at doses of 2 g thrice daily for one month there is reduced blood pressure and angina symptoms in concert with improved endothelial function and quality of life in hypertensive patients without obstructive CAD.⁹⁷ Thus, although a narrow clinical niche, and a less-than-convenient dosing regimen, L-arginine supplementation can be beneficial in patients with non-obstructive CAD and debilitating angina by improving CVD risk factor parameters and symptoms.

The longer-term effects of oral L-arginine have also been evaluated. Among patients with heart failure, oral L-arginine improved endothelial function, arterial compliance, and functional status.⁹⁸

The potential benefits associated with L-arginine therapies are presumably mediated by increased NO activity, particularly as it applies to improving the bioavailability of NO in areas of reduced endothelial shear stress.⁹⁹ In addition to improved endothelial function, L-arginine supplementation has also been implicated in reducing plasma endothelin levels,⁹⁵ reduced symptomatic burden via apoptosis of proliferating vascular smooth muscle cells leading to atherosclerotic plaque regression other changes that have been described include lower plasma endothelin concentrations,¹⁰⁰ and finally arresting atherosclerotic plaque development in an animal model.¹⁰¹

Phosphodiesterase inhibitors such as sildenafil have also been shown to be beneficial to improving peripheral endothelial function in a small cohort of diabetic men,¹⁰⁶ as well as enhance penile blood flow and erectile function.¹⁰⁷ Larger-scale data, however, does not exist, and these agents have recently been found to be of no CVD benefit in patients with heart failure and preserved endothelial function.¹⁰⁸

Nicorandil – This anti-anginal, unavailable in the US, has dual nitrate and potassium-ATP channel agonist properties by increasing the formation of cyclic GMP. This agent is effective in improving endothelial function in patients without prior coronary artery disease after one year with concomitant reductions in inflammatory markers.¹⁰⁹ Despite its theoretical promise, there have only been limited data published, albeit positive, regarding the efficacy of nicorandil in patients ($n = 65$) with chronic stable angina as well as induced plaque regression in animal and human studies.¹¹⁰

3. Channel pathways (Ca, K.)

Nifedipine may have antioxidant effects and effects on endothelial nitric oxide synthase expression and activity. In a study of 454 patients undergoing percutaneous coronary intervention, endothelium dependent vasodilatation was assessed with intracoronary acetylcholine after six months of therapy with nifedipine, showing an improvement in endothelial function but no plaque regression.¹¹¹

Ranolazine – This sodium channel inhibitor used for patients with refractory angina has been shown to alleviate symptoms of microvascular angina pain, however there was no significant change seen in microvascular function.¹¹² Furthermore, there has been improvement in endothelial function in smaller RCTs examining diabetic patients,¹¹³ as well as patients with chronic stable angina.¹¹⁴

Supplementation of *taurine*, a semi-essential amino acid has also been shown to be marginally beneficial to endothelial function.¹¹⁵

4. Receptor and enzyme pathways (beta-blockers, ET, ACE-I, ARB)

Lipid lowering – Some but not all studies have found that endothelial dysfunction can be ameliorated or even eliminated with the use of a statin, and theoretically these medications will already be a mainstay in reducing CVD risk in most patients due to their lipid-lowering and anti-inflammatory mechanisms.¹¹⁶ The combination of ACE-inhibition and statin therapy has also been shown to improve endothelial-dependent relaxation of the coronary vasculature through NO-dependent mechanisms.¹¹⁷

Fibrate therapy also improves fasting and postprandial endothelial function in patients with type 2 diabetes, as does omega-3 fatty acid supplementation.¹¹⁸ The mechanism for this may be an increase in high density lipoproteins (HDL) and an attenuation of postprandial lipemia and the associated oxidative stress.¹¹⁹ HDL lowering or niacin therapy appears to have no beneficial effect on endothelial health.¹²⁰

Blockade of the renin-angiotensin system – Angiotensin converting enzyme (ACE) inhibitors may improve endothelial dysfunction, but this benefit may not be seen in all drugs in this class. In one report, quinapril, which has high tissue specificity for ACE improved endothelial dysfunction in patients with coronary disease.¹²¹ The efficacy of quinapril was also evaluated in the TREND trial of men with coronary disease but without heart failure, hypertension, or lipid abnormalities improving endothelial dysfunction at six months.¹²² These benefits were thought to be secondary to an improved NO-bioavailability through reduced bradykinin breakdown as well as improved ROS scavenging. As stated earlier, ACE-inhibitors do improve coronary endothelial resistance through NO-dependent mechanisms.¹¹⁷

Most studies have shown an improvement in endothelial dysfunction following the administration of an angiotensin II receptor blocker in patients with atherosclerosis or diabetes.^{123–125} Furthermore, ARBs have been shown to improve coronary endothelial dysfunction,¹²⁶ and there is increasing evidence that direct renin inhibition improves endothelial function in at risk patients.¹²⁷

Nebivolol, as there appears to be some increase in NO bioavailability with this beta-blocker.¹²⁸

Aspirin – Studies suggest that aspirin improves endothelial dysfunction in patients with known atherosclerosis, likely through inhibition of cyclooxygenase-dependent vasoconstriction.¹²⁹ This can result in vasodilation and reduction in thrombosis, providing a potential mechanism for the beneficial effects of aspirin in atherosclerosis. However, most patients with endothelial dysfunction will already be on such a therapy, so the additive benefit is not likely to be substantial.

N-acetylcysteine (NAC), a thiol, is a pharmacologic precursor of L-cysteine. It augments the bioavailability of NO and can improve scavenging of ROS. One study of 16 patients with atherosclerosis found that NAC supplements improved coronary and peripheral endothelium-dependent vasodilation; the response to nitroglycerin was not affected, while the response to nitroprusside was potentiated only in the coronary arteries.¹³⁰

Estrogen and other selective estrogen receptor modulators – Reports of estrogen therapy improving endothelial function in post-menopausal women¹³¹ appear to have biologic plausibility as endothelial cells have estrogen receptors,¹³² as well as through improved NO bioavailability¹³³ or through a reduction in coronary endothelin-1 levels.¹³⁴

Similarly Tamoxifen and raloxifene are selective estrogen receptor modulators, having estrogen-like activity, and also found to have positive effects on FMD.¹³⁵ However, consideration for

the use of any of these hormonal therapies should be carefully evaluated in terms of global risks and benefits for the patient.

Testosterone may improve endothelial dysfunction, however the data is only in the form of a case series showing increased coronary artery vasodilatation.¹³⁶ Again, however, the overall risk of testosterone supplementation appears to outweigh the benefit of augmenting endothelial function with such, and we would recommend against this therapeutic option.

Endothelin receptor blockers – Elevated levels of endothelin is thought to play a role in endothelial dysfunction seen in heart failure and hypertension and the transient dysfunction induced by mental stress. A recent randomized, double-blind, placebo-controlled trial in patients at high risk for CVD showed a significant improvement in coronary microvascular endothelial function.¹³⁷ This therapy is still being researched for widespread use in targeted populations.

Insulin sensitizers – As diabetes and endothelial dysfunction are typically concomitant pre-atherosclerotic conditions, there is a body of literature detailing conflicting reports of the benefit of insulin sensitizers on endothelial function. Metformin is generally thought to improve peripheral endothelial function as evidenced by smaller RCTs in diabetic patients⁸¹ and those with metabolic syndrome.¹³⁸ Extending these results, both metformin and rosiglitazone have been found to improve endothelial function in women afflicted with PCOS, however confounding effects of reductions in testosterone and HOMA results as well as normalization of menstrual cycles have left this debate unresolved.¹³⁹ Rosiglitazone has been found to attenuate impaired vasodilation in diabetic patients subjected to fatty acid meal challenges.¹⁴⁰ Conversely these results were not mechanistically validated as it was pioglitazone, not rosiglitazone, which reduced pharmacologically induced vasoconstriction in internal mammary artery grafts from diabetic patients.¹⁴¹ Ultimately, these agents likely improve endothelial function in patients with diabetes; however, the multiple confounders present in these studies leave room for further work and research regarding their effect on endothelial function and CVD outcomes in larger RCTs.

Prognosis after therapy – A study in patients with coronary artery disease showed that persistent impairment of endothelial vasomotor function despite optimized therapy to reduce risk factors has an adverse impact on clinical outcome.⁹⁹

SUMMARY AND RECOMMENDATIONS

- Currently, there are no FDA-approved treatments for endothelial dysfunction, as the treatment should encompass addressing the underlying comorbidity that lead to endothelial dysfunction.
- L-arginine, in large quantities (9–18 g daily), has been shown to have beneficial effects on both vascular reactivity and relief of symptoms from coronary endothelial function.
- ASA, statins, ACEI have all shown benefit in reducing CVD risk with endothelial function improvement likely to be a concomitant factor.
- Diet and exercise have both been shown to improve vascular reactivity, and should be encouraged as part of lifestyle behaviors beneficial toward overall CVD health.

Acknowledgements and funding

This work was supported by grant NPRP 09–045–3–011 The Assessment of Novel Functional Risk Factors for the Predictor of Cardiovascular Event in Vulnerable Patients Following Acute Coronary Syndrome

REFERENCES

- [1] Wolinsky H. A proposal linking clearance of circulating lipoproteins to tissue metabolic activity as a basis for understanding atherogenesis. *Circ Res.* 1980;47(3):301–311.
- [2] Augustin H, Kozian DH, Johnson RC. Differentiation of endothelial cells: Analysis of the constitutive and activated endothelial cell phenotypes. *Bioessays.* 1994;16(12):901–906.
- [3] Goff DC Jr, Lloyd-Jones DM, Bennett G, Coady S, D'Agostino RB Sr, Gibbons R, Greenland P, Lackland DT, Levy D, O'Donnell CJ, Robinson JG, Schwartz JS, Shero ST, Smith SC Jr, Sorlie P, Stone NJ, Wilson PW. 2013 ACC/AHA guideline on the assessment of cardiovascular risk: A report of the American College of Cardiology/American Heart Association Task Force on Practice Guidelines. *J Am Coll Cardiol.* 2014;63(25 Pt B):2935–2959.
- [4] Greenland P, Alpert JS, Beller GA, Benjamin EJ, Budoff MJ, Fayad ZA, Foster E, Hlatky MA, Hodgson JM, Kushner FG, Lauer MS, Shaw LJ, Smith SC Jr, Taylor AJ, Weintraub WS, Wenger NK, Jacobs AK, Smith SC Jr, Anderson JL, Albert N, Buller CE, Creager MA, Ettinger SM, Guyton RA, Halperin JL, Hochman JS, Kushner FG, Nishimura R, Ohman EM, Page RL, Stevenson WG, Tarkington LG, Yancy CW, American College of Cardiology Foundation; American Heart Association. 2010 ACCF/AHA guideline for assessment of cardiovascular risk in asymptomatic adults: A report of the

- American College of Cardiology Foundation/American Heart Association Task Force on Practice Guidelines. *J Am Coll Cardiol*. 2010;56(25):e50–e103.
- [5] Go A, Mozaffarian D, Roger VL, Benjamin EJ, Berry JD, Borden WB, Bravata DM, Dai S, Ford ES, Fox CS, Franco S, Fullerton HJ, Gillespie C, Hailpern SM, Heit JA, Howard VJ, Huffman MD, Kissela BM, Kittner SJ, Lackland DT, Lichtman JH, Lisabeth LD, Magid D, Marcus GM, Marelli A, Matchar DB, McGuire DK, Mohler ER, Moy CS, Mussolino ME, Nichol G, Paynter NP, Schreiner PJ, Sorlie PD, Stein J, Turan TN, Virani SS, Wong ND, Woo D, Turner MB, American Heart Association Statistics Committee and Stroke Statistics Subcommittee. Executive summary: Heart disease and stroke statistics—2013 update: A report from the American Heart Association. *Circulation*. 2013;127(1):143–152.
 - [6] Janssens S, Shimouchi A, Quertermous T, Bloch DB, Bloch KD. Cloning and expression of a cDNA encoding human endothelium-derived relaxing factor/nitric oxide synthase. *J Biol Chem*. 1992;267(21):14519–14522.
 - [7] Clarkson P, Celermajer DS, Powe AJ, Donald AE, Henry RM, Deanfield JE. Endothelium-dependent dilatation is impaired in young healthy subjects with a family history of premature coronary disease. *Circulation*. 1997;96(10):3378–3383.
 - [8] Lundman P, Eriksson MJ, Stühlinger M, Cooke JP, Hamsten A, Tornvall P. Mild-to-moderate hypertriglyceridemia in young men is associated with endothelial dysfunction and increased plasma concentrations of asymmetric dimethylarginine. *J Am Coll Cardiol*. 2001;38(1):111–116.
 - [9] Ford M, McConnell JP, Lavi S, Rihal CS, Prasad A, Sandhu GS, Hartman SJ, Lerman LO, Lerman A. Coronary artery endothelial dysfunction is positively correlated with low density lipoprotein and inversely correlated with high density lipoprotein subclass particles measured by nuclear magnetic resonance spectroscopy. *Atherosclerosis*. 2009;207(1):111–115.
 - [10] Lavi S, Prasad A, Yang EH, Mathew V, Simari RD, Rihal CS, Lerman LO, Lerman A. Smoking is associated with epicardial coronary endothelial dysfunction and elevated white blood cell count in patients with chest pain and early coronary artery disease. *Circulation*. 2007;115(20):2621–2627.
 - [11] Al Suwaidi J, Higano ST, Holmes DR Jr, Lennon R, Lerman A. Obesity is independently associated with coronary endothelial dysfunction in patients with normal or mildly diseased coronary arteries. *J Am Coll Cardiol*. 2001;37(6):1523–1528.
 - [12] Shinozaki K, Hirayama A, Nishio Y, Yoshida Y, Ohtani T, Okamura T, Masada M, Kikkawa R, Kodama K, Kashiwagi A. Coronary endothelial dysfunction in the insulin-resistant state is linked to abnormal pteridine metabolism and vascular oxidative stress. *J Am Coll Cardiol*. 2001;38(7):1821–1828.
 - [13] Arcaro G, Cretti A, Balzano S, Lechi A, Muggeo M, Bonora E, Bonadonna RC. Insulin causes endothelial dysfunction in humans: Sites and mechanisms. *Circulation*. 2002;105(5):576–582.
 - [14] Balletshofer B, Rittig K, Enderle MD, Volk A, Maerker E, Jacob S, Matthaei S, Rett K, Häring HU. Endothelial dysfunction is detectable in young normotensive first-degree relatives of subjects with type 2 diabetes in association with insulin resistance. *Circulation*. 2000;101(15):1780–1784.
 - [15] Celermajer D, Sorensen KE, Spiegelhalter DJ, Georgakopoulos D, Robinson J, Deanfield JE. Aging is associated with endothelial dysfunction in healthy men years before the age-related decline in women. *J Am Coll Cardiol*. 1994;24(2):471–476.
 - [16] Egashira K, Inou T, Hirooka Y, Kai H, Sugimachi M, Suzuki S, Kuga T, Urabe Y, Takeshita A. Effects of age on endothelium-dependent vasodilation of resistance coronary artery by acetylcholine in humans. *Circulation*. 1993;88(1):77–81.
 - [17] Tomiyama H, Yamashina A, Arai T, Hirose K, Koji Y, Chikamori T, Hori S, Yamamoto Y, Doba N, Hinohara S. Influences of age and gender on results of noninvasive brachial-ankle pulse wave velocity measurement—a survey of 12517 subjects. *Atherosclerosis*. 2003;166(2):303–309.
 - [18] Ghiadoni L, Donald AE, Cropley M, Mullen MJ, Oakley G, Taylor M, O'Connor G, Betteridge J, Klein N, Steptoe A, Deanfield JE. Mental Stress Induces Transient Endothelial Dysfunction in Humans. *Circulation*. 2000;102(20):2473–2478.
 - [19] Martin E, Tan SL, MacBride LR, Lavi S, Lerman LO, Lerman A. Sex differences in vascular and endothelial responses to acute mental stress. *Clin Auton Res*. 2008;18(6):339–345.
 - [20] Spieker LE, Hürlimann D, Ruschitzka F, Corti R, Enseleit F, Shaw S, Hayoz D, Deanfield JE, Lüscher TF, Noll G. Mental stress induces prolonged endothelial dysfunction via endothelin-A receptors. *Circulation*. 2002;105:2817.
 - [21] Poredos P, Kek A. Relation of blunted dilation of the brachial artery in insulin-dependent diabetes mellitus to microalbuminuria. *Am J Cardiol*. 2000;86(3):364–367.
 - [22] Poredos P, Orehek M, Tratnik E. Smoking is associated with dose-related increase of intima-media thickness and endothelial dysfunction. *Angiology*. 1999;50(3):201–208.
 - [23] Yang Z, Li J, Kong J, Wu S. Impairment of vascular endothelial function following reperfusion therapy in patients with acute myocardial infarction. *J Int Med Res*. 2013;41(4):1074–1078.
 - [24] Layland J, Judkins C, Palmer S, Whitbourn R, Wilson-O'Brien A, MacIsaac A, Wilson A. The resting status of the coronary microcirculation is a predictor of microcirculatory function following elective PCI for stable angina. *Int J Cardiol*. 2013;169(2):121–125.
 - [25] Yamamoto M, Hara H, Moroi M, Ito S, Nakamura M, Sugi K. Impaired digital reactive hyperemia and the risk of restenosis after primary coronary intervention in patients with acute coronary syndrome. *J Atheroscler Thromb*. 2014;21(9):957–965.
 - [26] Gomes V, Gomes MB, Tibirica E, Lessa MA. Post-operative endothelial dysfunction assessment using laser Doppler perfusion measurement in cardiac surgery patients. *Acta Anaesthesiol Scand*. 2014;58(4):468–477.
 - [27] Feng J, Liu Y, Chu LM, Singh AK, Dobrilovic N, Fingleton JG, Clements RT, Bianchi C, Sellke FW. Changes in microvascular reactivity after cardiopulmonary bypass in patients with poorly controlled versus controlled diabetes. *Circulation*. 2012;126(11 Suppl 1):S73–S80.

- [28] Dorbala S, Vangala D, Bruyere J Jr, Quarta C, Kruger J, Padera R, Foster C, Hanley M, Di Carli MF, Falk R. Coronary microvascular dysfunction is related to abnormalities in myocardial structure and function in cardiac amyloidosis. *JACC Heart Fail.* 2014;2(4):358–367.
- [29] Tavares A, Bocchi EA, Guimarães GV. Endothelial function in pre-pubertal children at risk of developing cardiomyopathy: A new frontier. *Clinics (Sao Paulo).* 2012;67(3):273–278.
- [30] Yoshino S, Cassar A, Matsuo Y, Herrmann J, Gulati R, Prasad A, Lennon RJ, Lerman LO, Lerman A. Fractional flow reserve with dobutamine challenge and coronary microvascular endothelial dysfunction in symptomatic myocardial bridging. *Circ J.* 2014;78(3):685–692.
- [31] Vergnani L, Hatrik S, Ricci F, Passaro A, Manzoli N, Zuliani G, Brovkovych V, Fellin R, Malinski T. Effect of native and oxidized low-density lipoprotein on endothelial nitric oxide and superoxide production: Key role of L-arginine availability. *Circulation.* 2000;101(11):1261–1266.
- [32] Landmesser U, Spiekermann S, Dikalov S, Tatge H, Wilke R, Kohler C, Harrison DG, Hornig B, Drexler H. Vascular oxidative stress and endothelial dysfunction in patients with chronic heart failure: Role of xanthine-oxidase and extracellular superoxide dismutase. *Circulation.* 2002;106(24):3073–3078.
- [33] Ceriello A, Taboga C, Tonutti L, Quagliari L, Piconi L, Bais B, Da Ros R, Motz E. Evidence for an independent and cumulative effect of postprandial hypertriglyceridemia and hyperglycemia on endothelial dysfunction and oxidative stress generation: Effects of short- and long-term simvastatin treatment. *Circulation.* 2002;106(10):1211–1218.
- [34] Li L, Chen W, Rezvan A, Jo H, Harrison DG. Tetrahydrobiopterin deficiency and nitric oxide synthase uncoupling contribute to atherosclerosis induced by disturbed flow. *Arterioscler Thromb Vasc Biol.* 2011;31(7):1547–1554.
- [35] Tiefenbacher C, Bleeke T, Vahl C, Amann K, Vogt A, Kübler W. Endothelial dysfunction of coronary resistance arteries is improved by tetrahydrobiopterin in atherosclerosis. *Circulation.* 2000;102(18):2172–2179.
- [36] Alexander L, Kutz JL, Kenney WL. Tetrahydrobiopterin increases NO-dependent vasodilation in hypercholesterolemic human skin through eNOS-coupling mechanisms. *Am J Physiol Regul Integr Comp Physiol.* 2013;304(2):R164–R169.
- [37] Schulze F, Lenzen H, Hanefeld C, Bartling A, Osterziel KJ, Goudeva L, Schmidt-Lucke C, Kusus M, Maas R, Schwedhelm E, Strödtter D, Simon BC, Mügge A, Daniel WG, Tillmanns H, Maisch B, Streichert T, Böger RH. Asymmetric dimethylarginine is an independent risk factor for coronary heart disease: Results from the multicenter coronary artery risk determination investigating the influence of ADMA concentration (CARDIAC) study. *Am Heart J.* 2006;152(3):493e1–493e8.
- [38] Böger R, Lentz SR, Bode-Böger SM, Knapp HR, Haynes WG. Elevation of asymmetrical dimethylarginine may mediate endothelial dysfunction during experimental hyperhomocyst(e)inaemia in humans. *Clin Sci (Lond).* 2001;100(2):161–167.
- [39] Elesber A, Solomon H, Lennon RJ, Mathew V, Prasad A, Pumper G, Nelson RE, McConnell JP, Lerman LO, Lerman A. Coronary endothelial dysfunction is associated with erectile dysfunction and elevated asymmetric dimethylarginine in patients with early atherosclerosis. *Eur Heart J.* 2006;27(7):824–831.
- [40] Valkonen V, Päivä H, Salonen JT, Lakka TA, Lehtimäki T, Laakso J, Laaksonen R. Risk of acute coronary events and serum concentration of asymmetrical dimethylarginine. *Lancet.* 2001;358(9299):2127–2128.
- [41] Kaye D, Ahlers BA, Autelitano DJ, Chin-Dusting JP. In vivo and in vitro evidence for impaired arginine transport in human heart failure. *Circulation.* 2000;102(22):2707–2712.
- [42] Widmer R, Lerman LO, Lerman A. Low-flow motion in the vascular ocean. *Circ Cardiovasc Interv.* 2012;5(5):617–619.
- [43] Liuba P, Kamani P, Pesonen E, Paakkari I, Forslid A, Johansson L, Persson K, Wadström T, Laurini R. Endothelial dysfunction after repeated Chlamydia pneumoniae infection in apolipoprotein E-knockout mice. *Circulation.* 2000;102(9):1039–1044.
- [44] Hingorani A, Cross J, Kharbanda RK, Mullen MJ, Bhagat K, Taylor M, Donald AE, Palacios M, Griffin GE, Deanfield JE, MacAllister RJ, Vallance P. Acute systemic inflammation impairs endothelium-dependent dilatation in humans. *Circulation.* 2000;102(9):994–999.
- [45] Blum A, Tamir S, Muallem K, Ben-Shushan RS, Keinan-Boker L, Paritsky M. Endothelial dysfunction is reversible in Helicobacter pylori-positive subjects. *Am J Med.* 2011;124(12):1171–1174.
- [46] Joensen J, Juul S, Henneberg E, Thomsen G, Ostergaard L, Lindholt JS. Can long-term antibiotic treatment prevent progression of peripheral arterial occlusive disease? A large, randomized, double-blinded, placebo-controlled trial. *Atherosclerosis.* 2008;196(2):937–942.
- [47] Zahn R, Schneider S, Frilling B, Seidl K, Tebbe U, Weber M, Gottwik M, Altmann E, Seidel F, Rox J, Höffler U, Neuhaus KL, Senges J, Working Group of Leading Hospital Cardiologists. Antibiotic therapy after acute myocardial infarction: A prospective randomized study. *Circulation.* 2003;107(9):1253–1259.
- [48] Beckman J, Thakore A, Kalinowski BH, Harris JR, Creager MA. Radiation therapy impairs endothelium-dependent vasodilation in humans. *J Am Coll Cardiol.* 2001;37(3):761–765.
- [49] Chow A, Chin C, Dahl G, Rosenthal DN. Anthracyclines cause endothelial injury in pediatric cancer patients: A pilot study. *J Clin Oncol.* 2006;24(6):925–928.
- [50] Hollenberg S, Klein LW, Parrillo JE, Scherer M, Burns D, Tamburro P, Bromet D, Satran A, Costanzo MR. Changes in coronary endothelial function predict progression of allograft vasculopathy after heart transplantation. *J Heart Lung Transplant.* 2004;23(3):265–271.
- [51] Hasdai D, Holmes DR Jr, Higano ST, Burnett JC Jr, Lerman A. Prevalence of coronary blood flow reserve abnormalities among patients with nonobstructive coronary artery disease and chest pain. *Mayo Clin Proc.* 1998;73(12):1133–1140.
- [52] Sharaf B, Pepine CJ, Kerensky RA, Reis SE, Reichel N, Rogers WJ, Sopko G, Kelsey SF, Holubkov R, Olson M, Miele NJ, Williams DO, Merz CN, WISE Study Group. Detailed angiographic analysis of women with suspected ischemic chest pain (pilot phase data from the NHLBI-sponsored Women's Ischemia Syndrome Evaluation [WISE] Study Angiographic Core Laboratory). *Am J Cardiol.* 2001;87(8):937–941.
- [53] Murdaca G, Colombo BM, Cagnati P, Gulli R, Spanò F, Puppo F. Endothelial dysfunction in rheumatic autoimmune diseases. *Atherosclerosis.* 2012;224(2):309–317.
- [54] Sari C, Bayram NA, Doğan FE, Baştuğ S, Bolat AD, Sarı SÖ, Ersoy O, Bozkurt E. The evaluation of endothelial functions in patients with celiac disease. *Echocardiography.* 2012;29(4):471–477.

- [55] D'Alessio S, Tacconi C, Fiocchi C, Danese S. Advances in therapeutic interventions targeting the vascular and lymphatic endothelium in inflammatory bowel disease. *Curr Opin Gastroenterol*. 2013;29(6):608–613.
- [56] Zelcer S, Chen B, Mangel J, Vujovic O, Thiessen-Philbrook HR, Reider M, Mahmud FH. Impaired vascular function in asymptomatic young adult survivors of Hodgkin Lymphoma following mediastinal radiation. *J Cancer Surviv*. 2010;4(3):218–224.
- [57] Targonski P, Bonetti PO, Pumper GM, Higano ST, Holmes DR Jr, Lerman A. Coronary endothelial dysfunction is associated with an increased risk of cerebrovascular events. *Circulation*. 2003;107(22):2805–2809.
- [58] Targonski P, Caldwell C, Peterson L, Shonyo S, Tangelos E, Lerman A. Association of endothelial dysfunction with cognitive impairment in community dwelling elderly. *Abstracts of the 40th Annual Meeting of the Society for Epidemiologic Research*, June 19-22, 2007, Boston, Massachusetts, USA. *Am J Epidemiol*. 2007 Jun 1;165(11 Suppl):S1–S151.
- [59] Yeboah J, Folsom AR, Burke GL, Johnson C, Polak JF, Post W, Lima JA, Crouse JR, Herrington DM. Predictive value of brachial flow-mediated dilation for incident cardiovascular events in a population-based study: The multi-ethnic study of atherosclerosis. *Circulation*. 2009;120(6):502–509.
- [60] Huang A, Silver AE, Shvenke E, Schopfer DW, Jahangir E, Titas MA, Shpilman A, Menzoian JO, Watkins MT, Raffetto JD, Gibbons G, Woodson J, Shaw PM, Dhady M, Eberhardt RT, Keaney JF Jr, Gokce N, Vita JA. Predictive value of reactive hyperemia for cardiovascular events in patients with peripheral arterial disease undergoing vascular surgery. *Arterioscler Thromb Vasc Biol*. 2007;27(10):2113–2119.
- [61] Anderson T, Charbonneau F, Title LM, Buithieu J, Rose MS, Conradson H, Hildebrand K, Fung M, Verma S, Lonn EM. Microvascular function predicts cardiovascular events in primary prevention: Long-term results from the firefighters and their endothelium (FATE) study. *Circulation*. 2011;123(2):163–169.
- [62] Lind L, Berglund L, Larsson A, Sundström J. Endothelial function in resistance and conduit arteries and 5-year risk of cardiovascular disease. *Circulation*. 2011;123(14):1545–1551.
- [63] Huang P, Chen LC, Leu HB, Ding PY, Chen JW, Wu TC, Lin SJ. Enhanced coronary calcification determined by electron beam CT is strongly related to endothelial dysfunction in patients with suspected coronary artery disease. *Chest*. 2005;128(2):810–815.
- [64] Ramadan M, Mahfouz EM, Goma GF, El-Diasty TA, Alldawi L, Ikrar T, Limin D, Kodama M, Aizawa Y. Evaluation of coronary calcium score by multidetector computed tomography in relation to endothelial function and inflammatory markers in asymptomatic individuals. *Circ J*. 2008;72(5):778–785.
- [65] Ludmer P, Selwyn AP, Shook TL, Wayne RR, Mudge GH, Alexander RW, Ganz P. Paradoxical vasoconstriction induced by acetylcholine in atherosclerotic coronary arteries. *N Engl J Med*. 1986;315(17):1046–1051.
- [66] Suwaidi J, Hamasaki S, Higano ST, Nishimura RA, Holmes DR Jr, Lerman A. Long-term follow-up of patients with mild coronary artery disease and endothelial dysfunction. *Circulation*. 2000;101(9):948–954.
- [67] Schächinger V, Britten MB, Zeiher AM. Prognostic impact of coronary vasodilator dysfunction on adverse long-term outcome of coronary heart disease. *Circulation*. 2000;101(16):1899–1906.
- [68] Shaw L, Berman DS, Maron DJ, Mancini GB, Hayes SW, Hartigan PM, Weintraub WS, O'Rourke RA, Dada M, Spertus JA, Chaitman BR, Friedman J, Slomka P, Heller GV, Germano G, Gosselin G, Berger P, Kostuk WJ, Schwartz RG, Knudtson M, Veledar E, Bates ER, McCallister B, Teo KK, Boden WE, COURAGE Investigators. Optimal medical therapy with or without percutaneous coronary intervention to reduce ischemic burden: Results from the clinical outcomes utilizing revascularization and aggressive drug evaluation (COURAGE) trial nuclear substudy. *Circulation*. 2008;117(10):1283–1291.
- [69] Tonino PA, De Bruyne B, Pijls NH, Siebert U, Ikeno F, van't Veer M, Klauss V, Manoharan G, Engström T, Oldroyd KG, Ver Lee PN, MacCarthy PA, Fearon WF, FAME Study Investigators. Fractional flow reserve versus angiography for guiding percutaneous coronary intervention. *N Engl J Med*. 2009;360(3):213–224.
- [70] Muller O, Mangiacapra F, Ntalianis A, Verhamme KM, Trana C, Hamilos M, Bartunek J, Vanderheyden M, Wyffels E, Heyndrickx GR, van Rooij FJ, Witteman JC, Hofman A, Wijns W, Barbato E, De Bruyne B. Long-term follow-up after fractional flow reserve-guided treatment strategy in patients with an isolated proximal left anterior descending coronary artery stenosis. *JACC Cardiovasc Interv*. 2011;4(11):1175–1182.
- [71] Fearon W, Balsam LB, Farouque HM, Caffarelli AD, Robbins RC, Fitzgerald PJ, Yock PG, Yeung AC. Novel index for invasively assessing the coronary microcirculation. *Circulation*. 2003;107(25):3129–3132.
- [72] McGeoch R, Watkins S, Berry C, Steedman T, Davie A, Byrne J, Hillis S, Lindsay M, Robb S, Dargie H, Oldroyd K. The index of microcirculatory resistance measured acutely predicts the extent and severity of myocardial infarction in patients with ST-segment elevation myocardial infarction. *JACC Cardiovasc Interv*. 2010;3(7):715–722.
- [73] Celermajer D, Sorensen KE, Gooch VM, Spiegelhalter DJ, Miller OI, Sullivan ID, Lloyd JK, Deanfield JE. Non-invasive detection of endothelial dysfunction in children and adults at risk of atherosclerosis. *Lancet*. 1992;340(8828):1111–1115.
- [74] Anderson T, Uehata A, Gerhard MD, Meredith IT, Knab S, Delagrangé D, Lieberman EH, Ganz P, Creager MA, Yeung AC, Selwyn AP. Close relation of endothelial function in the human coronary and peripheral circulations. *J Am Coll Cardiol*. 1995;26(5):1235–1241.
- [75] Betik A, Luckham VB, Hughson RL. Flow-mediated dilation in human brachial artery after different circulatory occlusion conditions. *Am J Physiol Heart Circ Physiol*. 2004;286(1):H442–H458.
- [76] Perticone F, Ceravolo R, Pujia A, Ventura G, Iacopino S, Scozzafava A, Ferraro A, Chello M, Mastroroberto P, Verdecchia P, Schillaci G. Prognostic significance of endothelial dysfunction in hypertensive patients. *Circulation*. 2001;104(2):191–196.
- [77] Inaba Y, Chen JA, Bergmann SR. Prediction of future cardiovascular outcomes by flow-mediated vasodilatation of brachial artery: A meta-analysis. *Int J Cardiovasc Imaging*. 2010;26(6):631–640.
- [78] Peters S, den Ruijter HM, Bots ML, Moons KG. Improvements in risk stratification for the occurrence of cardiovascular disease by imaging subclinical atherosclerosis: A systematic review. *Heart*. 2012;98(3):177–184.

- [79] Thijssen D, Black MA, Pyke KE, Padilla J, Atkinson G, Harris RA, Parker B, Widlansky ME, Tschakovsky ME, Green DJ. Assessment of flow-mediated dilation in humans: A methodological and physiological guideline. *Am J Physiol Heart Circ Physiol*. 2011;300(1):H2–H12.
- [80] Lekakis J, Abraham P, Balbarini A, Blann A, Boulanger CM, Cockcroft J, Cosentino F, Deanfield J, Gallino A, Ikonomidis I, Kremastinos D, Landmesser U, Protogerou A, Stefanadis C, Tousoulis D, Vassalli G, Vink H, Werner N, Wilkinson I, Vlachopoulos C. Methods for evaluating endothelial function: A position statement from the European society of cardiology working group on peripheral circulation. *Eur J Cardiovasc Prev Rehabil*. 2011;18(6):775–789.
- [81] Mather K, Verma S, Anderson TJ. Improved endothelial function with metformin in type 2 diabetes mellitus. *J Am Coll Cardiol*. 2001;37(5):1344–1350.
- [82] Gori T, Dragoni S, Lisi M, Di Stolfo G, Sonnati S, Fineschi M, Parker JD. Conduit artery constriction mediated by low flow a novel noninvasive method for the assessment of vascular function. *J Am Coll Cardiol*. 2008;51(20):1953–1958.
- [83] Gori T, Muxel S, Damaske A, Radmacher MC, Fasola F, Schaefer S, Schulz A, Jabs A, Parker JD, Münzel T. Endothelial function assessment: Flow-mediated dilation and constriction provide different and complementary information on the presence of coronary artery disease. *Eur Heart J*. 2012;33(3):363–371.
- [84] Bellien J, Joannides R, Iacob M, Arnaud P, Thuillez C. Evidence for a basal release of a cytochrome-related endothelium-derived hyperpolarizing factor in the radial artery in humans. *Am J Physiol Heart Circ Physiol*. 2006;290(4):H1347–H1352.
- [85] Capodanno D, Di Salvo ME, Cincotta G, Miano M, Tamburino C. Usefulness of the SYNTAX score for predicting clinical outcome after percutaneous coronary intervention of unprotected left main coronary artery disease. *Circ Cardiovasc Interv*. 2009;2(4):302–308.
- [86] Gori T, Parker JD, Münzel T. Flow-mediated constriction: Further insight into a new measure of vascular function. *Eur Heart J*. 2011;32(7):784–787.
- [87] Spiro J, Digby JE, Ghimire G, Mason M, Mitchell AG, Ilsley C, Donald A, Dalby MC, Kharbanda RK. Brachial artery low-flow-mediated constriction is increased early after coronary intervention and reduces during recovery after acute coronary syndrome: Characterization of a recently described index of vascular function. *Eur Heart J*. 2011;32(7):856–866.
- [88] Bonetti PO, Pumper GM, Higano ST, Holmes DR Jr, Kuvin JT, Lerman A. Noninvasive identification of patients with early coronary atherosclerosis by assessment of digital reactive hyperemia. *J Am Coll Cardiol*. 2004;44(11):2137–2141.
- [89] Hasdai D, Lerman A. The assessment of endothelial function in the cardiac catheterization laboratory in patients with risk factors for atherosclerotic coronary artery disease. *Herz*. 1999;24(7):544–547.
- [90] Goor DA, Sheffy J, Schnall RP, Arditti A, Caspi A, Bragdon EE, Sheps DS. Peripheral arterial tonometry: A diagnostic method for detection of myocardial ischemia induced during mental stress tests: A pilot study. *Clin Cardiol*. 2004;27(3):137–141.
- [91] Lerman A, A M. Zeiher. *Endothelial function: Cardiac events*. *Circulation*. 2005;111(3):363–368.
- [92] Bonetti PO, Pumper GM, Higano ST, Holmes DR Jr, Kuvin JT, Lerman A. Noninvasive identification of patients with early coronary atherosclerosis by assessment of digital reactive hyperemia. *J Am Coll Cardiol*. 2004;44(11):2137–2141.
- [93] Nohria A, Gerhard-Herman M, Creager MA, Hurley S, Mitra D, Ganz P. Role of nitric oxide in the regulation of digital pulse volume amplitude in humans. *J Appl Physiol*. 2006;101(2):545–548.
- [94] Kuvin J, Patel AR, Sliney KA, Pandian NG, Sheffy J, Schnall RP, Karas RH, Udelson JE. Assessment of peripheral vascular endothelial function with finger arterial pulse wave amplitude. *Am Heart J*. 2003;146(1):168–174.
- [95] Hamburg N, Palmisano J, Larson MG, Sullivan LM, Lehman BT, Vasan RS, Levy D, Mitchell GF, Vita JA, Benjamin EJ. Relation of brachial and digital measures of vascular function in the community: The Framingham heart study. *Hypertension*. 2011;57(3):390–396.
- [96] Schnabel R, Schulz A, Wild PS, Sinning CR, Wilde S, Eleftheriadis M, Herkenhoff S, Zeller T, Lubos E, Lackner KJ, Warnholtz A, Gori T, Blankenberg S, Münzel T. Noninvasive vascular function measurement in the community: Cross-sectional relations and comparison of methods. *Circ Cardiovasc Imaging*. 2011;4(4):371–380.
- [97] Nohria A, Gerhard-Herman M, Creager MA, Hurley S, Mitra D, Ganz P. Role of nitric oxide in the regulation of digital pulse volume amplitude in humans. *J Appl Physiol*. 1985;101(2):545–548.
- [98] Modena M, Bonetti L, Coppi F, Bursi F, Rossi R. Prognostic role of reversible endothelial dysfunction in hypertensive postmenopausal women. *J Am Coll Cardiol*. 2002;40:505–510.
- [99] Kitta Y, Obata JE, Nakamura T, Hirano M, Kodama Y, Fujioka D, Saito Y, Kawabata K, Sano K, Kobayashi T, Yano T, Nakamura K, Kugiyama K. Persistent impairment of endothelial vasomotor function has a negative impact on outcome in patients with coronary artery disease. *J Am Coll Cardiol*. 2009;53(4):323–330.
- [100] Rubinshtein R, Kuvin JT, Soffler M, Lennon RJ, Lavi S, Nelson RE, Pumper GM, Lerman LO, Lerman A. Assessment of endothelial function by non-invasive peripheral arterial tonometry predicts late cardiovascular adverse events. *Eur Heart J*. 2010;31(9):1142–1148.
- [101] Kjaer A, Meyer C, Nielsen FS, Parving HH, Hesse B. Dipyridamole, cold pressor test, and demonstration of endothelial dysfunction: A PET study of myocardial perfusion in diabetes. *J Nucl Med*. 2003;44(1):19–23.
- [102] Johnson N, Gould KL. Clinical evaluation of a new concept: Resting myocardial perfusion heterogeneity quantified by markovian analysis of PET identifies coronary microvascular dysfunction and early atherosclerosis in 1,034 subjects. *J Nucl Med*. 2005;46(9):1427–1437.
- [103] Wöhrle J, Nusser T, Merkle N, Kestler HA, Grebe OC, Marx N, Höher M, Kochs M, Hombach V. Myocardial perfusion reserve in cardiovascular magnetic resonance: Correlation to coronary microvascular dysfunction. *J Cardiovasc Magn Reson*. 2006;8(6):781–787.
- [104] Yilmaz A, Athanasiadis A, Mahrholdt H, Voehringer M, Ong P, Hill S, Kispert EM, Seebo M, Sechtem U. Diagnostic value of perfusion cardiovascular magnetic resonance in patients with angina pectoris but normal coronary angiograms assessed by intracoronary acetylcholine testing. *Heart*. 2010;96(5):372–379.

- [105] Wenzel R, Duthiers N, Noll G, Bucher J, Kaufmann U, Lüscher TF. Endothelin and calcium antagonists in the skin microcirculation of patients with coronary artery disease. *Circulation*. 1996;94(3):316–322.
- [106] Deyoung L, Chung E, Kovac JR, Romano W, Brock GB. Daily use of sildenafil improves endothelial function in men with type 2 diabetes. *J Androl*. 2012;33(2):176–180.
- [107] Vardi Y, Appel B, Ofer Y, Greunwald I, Dayan L, Jacob G. Effect of chronic sildenafil treatment on penile endothelial function: A randomized, double-blind, placebo controlled study. *J Urol*. 2009;182(6):2850–2855.
- [108] Redfield M, Chen HH, Borlaug BA, Semigran MJ, Lee KL, Lewis G, LeWinter MM, Rouleau JL, Bull DA, Mann DL, Deswal A, Stevenson LW, Givertz MM, Ofili EO, O'Connor CM, Felker GM, Goldsmith SR, Bart BA, McNulty SE, Ibarra JC, Lin G, Oh JK, Patel MR, Kim RJ, Tracy RP, Velazquez EJ, Anstrom KJ, Hernandez AF, Mascette AM, Braunwald E, RELAX Trial. and Collaborators. Effect of phosphodiesterase-5 inhibition on exercise capacity and clinical status in heart failure with preserved ejection fraction: A randomized clinical trial. *JAMA*. 2013;309(12):1268–1277.
- [109] Ishibashi Y, Takahashi N, Tokumaru A, Karino K, Sugamori T, Sakane T, Yoshitomi H, Sato H, Oyake N, Murakami Y, Shimada T. Effects of long-term nicorandil administration on endothelial function, inflammation, and oxidative stress in patients without coronary artery disease. *J Cardiovasc Pharmacol*. 2008;51(3):311–316.
- [110] Izumiya Y, Kojima S, Kojima S, Araki S, Usuku H, Matsubara J, Sakamoto K, Tsujita K, Nagayoshi Y, Kaikita K, Sugiyama S, Ogawa H. Long-term use of oral nicorandil stabilizes coronary plaque in patients with stable angina pectoris. *Atherosclerosis*. 2011;214(2):415–421.
- [111] Lüscher T, Pieper M, Tendera M, Vrolix M, Rutsch W, van den Branden F, Gil R, Bischoff KO, Haude M, Fischer D, Meinertz T, Münzel T. A randomized placebo-controlled study on the effect of nifedipine on coronary endothelial function and plaque formation in patients with coronary artery disease: The ENCORE II study. *Eur Heart J*. 2009;30(13):1590–1597.
- [112] Villano A, Di Franco A, Nerla R, Sestito A, Tarzia P, Lamendola P, Di Monaco A, Sarullo FM, Lanza GA, Crea F. Effects of ivabradine and ranolazine in patients with microvascular angina pectoris. *Am J Cardiol*. 2013;112(1):8–13.
- [113] Lamendola P, Nerla R, Pitocco D, Villano A, Scavone G, Stazi A, Russo G, Di Franco A, Ghirlanda G, Lanza GA, Crea F. Effect of ranolazine on arterial endothelial function in patients with type 2 diabetes mellitus. *Atherosclerosis*. 2013;226(1):157–160.
- [114] Deshmukh S, Patel SR, Pinassi E, Mindrescu C, Hermance EV, Infantino MN, Coppola JT, Staniloae CS. Ranolazine improves endothelial function in patients with stable coronary artery disease. *Coron Artery Dis*. 2009;20(5):343–347.
- [115] Imamura M, Biro S, Kihara T, Yoshifuku S, Takasaki K, Otsuji Y, Minagoe S, Toyama Y, Tei C. Repeated thermal therapy improves impaired vascular endothelial function in patients with coronary risk factors. *J Am Coll Cardiol*. 2001;38(4):1083–1088.
- [116] Bonetti P, Lerman LO, Lerman A. Endothelial dysfunction: A marker of atherosclerotic risk. *Arterioscler Thromb Vasc Biol*. 2003;23(2):168–175.
- [117] Tiefenbacher C, Friedrich S, Bleeke T, Vahl C, Chen X, Niroomand F. ACE inhibitors and statins acutely improve endothelial dysfunction of human coronary arterioles. *Am J Physiol Heart Circ Physiol*. 2004;286(4):425–432.
- [118] Moertl D, Hammer A, Steiner S, Hutuleac R, Vonbank K, Berger R. Dose-dependent effects of omega-3-polyunsaturated fatty acids on systolic left ventricular function, endothelial function, and markers of inflammation in chronic heart failure of nonischemic origin: A double-blind, placebo-controlled, 3-arm study. *Am Heart J*. 2011;161(5):e1–e9.
- [119] Evans M, Anderson RA, Graham J, Ellis GR, Morris K, Davies S, Jackson SK, Lewis MJ, Frenneaux MP, Rees A. Ciprofibrate therapy improves endothelial function and reduces postprandial lipemia and oxidative stress in type 2 diabetes mellitus. *Circulation*. 2000;101(15):1773–1779.
- [120] Sahebkar A. Effect of niacin on endothelial function: A systematic review and meta-analysis of randomized controlled trials. *Vasc Med*. 2014;19(1):54–66.
- [121] Anderson T, Elstein E, Haber H, Charbonneau F. Comparative study of ACE-inhibition, angiotensin II antagonism, and calcium channel blockade on flow-mediated vasodilation in patients with coronary disease (BANFF study). *J Am Coll Cardiol*. 2000;35(1):60–66.
- [122] Mancini G, Henry GC, Macaya C, O'Neill BJ, Pucillo AL, Carere RG, Wargovich TJ, Mudra H, Lüscher TF, Klibaner MI, Haber HE, Uprichard AC, Pepine CJ, Pitt B. Angiotensin-converting enzyme inhibition with quinapril improves endothelial vasomotor dysfunction in patients with coronary artery disease. The TREND (Trial on Reversing Endothelial Dysfunction) Study. *Circulation*. 1996;94(3):258–265.
- [123] Prasad A, Tupas-Habib T, Schenke WH, Mincemoyer R, Panza JA, Waclawin MA, Ellahham S, Quyyumi AA. Acute and chronic angiotensin-1 receptor antagonism reverses endothelial dysfunction in atherosclerosis. *Circulation*. 2000;101(20):2349–2354.
- [124] Homig B, Landmesser U, Kohler C, Ahlersmann D, Spiekermann S, Christoph A, Tatge H, Drexler H. Comparative effect of ace inhibition and angiotensin II type 1 receptor antagonism on bioavailability of nitric oxide in patients with coronary artery disease: Role of superoxide dismutase. *Circulation*. 2001;103(6):799–805.
- [125] Cheetham C, Collis J, O'Driscoll G, Stanton K, Taylor R, Green D. Losartan, an angiotensin type 1 receptor antagonist, improves endothelial function in non-insulin-dependent diabetes. *J Am Coll Cardiol*. 2000;36(5):1461–1466.
- [126] Hinoi T, Tomohiro Y, Kajiwara S, Matsuo S, Fujimoto Y, Yamamoto S, Shichijo T, Ono T. Telmisartan, an angiotensin II type 1 receptor blocker, improves coronary microcirculation and insulin resistance among essential hypertensive patients without left ventricular hypertrophy. *Hypertens Res*. 2008;31(4):615–622.
- [127] Virdis A, Ghiadoni L, Qasem AA, Lorenzini G, Duranti E, Cartoni G, Bruno RM, Bernini G, Taddei S. Effect of aliskiren treatment on endothelium-dependent vasodilation and aortic stiffness in essential hypertensive patients. *Eur Heart J*. 2012;33(12):1530.
- [128] Zepeda R, Castillo R, Rodrigo R, Prieto JC, Aramburu I, Brugere S, Galdames K, Noriega V, Miranda HF. Effect of carvedilol and nebivolol on oxidative stress-related parameters and endothelial function in patients with essential hypertension. *Basic Clin Pharmacol Toxicol*. 2012;111(5):309–316.

- [129] Husain S, Andrews NP, Mulcahy D, Panza JA, Quyyumi AA. Aspirin improves endothelial dysfunction in atherosclerosis. *Circulation*. 1998;97(8):716–720.
- [130] Andrews N, Prasad A, Quyyumi AA. N-acetylcysteine improves coronary and peripheral vascular function. *J Am Coll Cardiol*. 2001;37(1):117–123.
- [131] Gilligan D, Quyyumi AA, Cannon ROIII. Effects of physiological levels of estrogen on coronary vasomotor function in postmenopausal women. *Circulation*. 1994;89(6):2543–2551.
- [132] Venkov C, Rankin AB, Vaughan DE. Identification of authentic estrogen receptor in cultured endothelial cells. A potential mechanism for steroid hormone regulation of endothelial function. *Circulation*. 1996;94(4):727–733.
- [133] Thompson L, Pinkas G, Weiner CP. Chronic 17beta-estradiol replacement increases nitric oxide-mediated vasodilation of guinea pig coronary microcirculation. *Circulation*. 2000;102(4):445–451.
- [134] Webb C, Gbatei MA, McNeill JG, Collins P. 17beta-estradiol decreases endothelin-1 levels in the coronary circulation of postmenopausal women with coronary artery disease. *Circulation*. 2000;102(14):1617–1622.
- [135] Clarke S, Schofield PM, Grace AA, Metcalfe JC, Kirschenlohr HL. Tamoxifen effects on endothelial function and cardiovascular risk factors in men with advanced atherosclerosis. *Circulation*. 2001;103(11):1497–1502.
- [136] Webb C, McNeill JG, Hayward CS, de Zeigler D, Collins P. Effects of testosterone on coronary vasomotor regulation in men with coronary heart disease. *Circulation*. 1999;100(16):1690–1696.
- [137] Reriani M, Raichlin E, Prasad A, Mathew V, Pumper GM, Nelson RE, Lennon R, Rihal C, Lerman LO, Lerman A. Long-term administration of endothelin receptor antagonist improves coronary endothelial function in patients with early atherosclerosis. *Circulation*. 2010;122(10):958–966.
- [138] Vitale C, Mercurio G, Cornoldi A, Fini M, Volterrani M, Rosano GM. Metformin improves endothelial function in patients with metabolic syndrome. *J Intern Med*. 2005;258(3):250–256.
- [139] Jensterle M, Sebestjen M, Janez A, Prezelj J, Kocjan T, Keber I, Pfeifer M. Improvement of endothelial function with metformin and rosiglitazone treatment in women with polycystic ovary syndrome. *Eur J Endocrinol*. 2008;159(4):399–406.
- [140] Mittermayer F, Schaller G, Pleiner J, Krzyzanowska K, Kapiotis S, Roden M, Wolzt M. Rosiglitazone prevents free fatty acid-induced vascular endothelial dysfunction. *J Clin Endocrinol Metab*. 2007;92(7):2574–2580.
- [141] Irat A, Aslamaci S, Karasu C, Ari N. Alteration of vascular reactivity in diabetic human mammary artery and the effects of thiazolidinediones. *J Pharm Pharmacol*. 2006;58(12):1647–1653.