

DATA NOTE

Open Access

High-throughput molecular identification of *Staphylococcus* spp. isolated from a clean room facility in an environmental monitoring program

Norhan S Sheraba¹, Aymen S Yassin^{2*}, Magdy A Amin²

Abstract

Background: The staphylococci are one of the most common environmental isolates found in clean room facility. Consequently, isolation followed by comprehensive and accurate identification is an essential step in any environmental monitoring program.

Findings: We have used the API Staph identification kit (bioMérieux, France) which depends on the expression of metabolic activities and or morphological features to identify the *Staphylococcus* isolates. The API staphylococci showed low sensitivity in the identification of some species, so we performed molecular methods based on PCR based fingerprinting of glyceraldehyde-3-phosphate dehydrogenase encoding gene as useful taxonomic tool for examining *Staphylococcus* isolates.

Conclusions: Our results showed that PCR protocol used in this study which depends on genotypic features was relatively accurate, rapid, sensitive and superior in the identification of at least 7 species of *Staphylococcus* than API Staph which depends on phenotypic features.

Background

In aseptic processing, one of the most important laboratory controls is the environmental monitoring program. This program is a defined, documented program that describes the routine particulate and microbiological monitoring of processing and manufacturing areas and includes a corrective action plan when action levels are exceeded. Environmental monitoring should promptly identify potential routes of contamination, allowing for implementation of corrections before product contamination occurs through evaluating the quality of air and surfaces in the clean room environment. The monitoring program should cover all production shifts and should include air, floors, walls, and equipment surfaces, including the critical surfaces that come in contact with the product, container, and closures. Samples should be taken throughout the classified areas of the aseptic processing facility (e.g., aseptic corridors, gowning rooms) using scientifically sound sampling procedures. Sample

sizes should be sufficient to optimize detection of environmental contaminants at levels that might be expected in a given clean area.

It is important that locations posing the most microbiological risk to the product be a key part of the program. It is especially important to monitor the microbiological quality of the critical area to determine whether or not aseptic conditions are maintained during filling and closing activities. Air and surface samples should be taken at the locations where significant activity or product exposure occurs during production. Critical surfaces that come in contact with the sterile product should remain sterile throughout an operation. Critical surface sampling should be performed at the conclusion of the aseptic processing operation to avoid direct contact with sterile surfaces during processing. Detection of microbial contamination on a critical site would not necessarily result in batch rejection.

Environmental monitoring of critical and controlled areas must include a comprehensive viable monitoring program which considers the following: frequency of sampling, time at which the samples are taken (i.e., during or at the conclusion of operations), duration of sampling, sample size (e.g., surface area, air volume), specific sampling

* Correspondence: aymen.yassin@live.com

²Department of Microbiology and Immunology, Faculty of Pharmacy, Cairo University, Cairo, 11562, Egypt

Full list of author information is available at the end of the article

equipment and techniques, alert and action levels and appropriate response to deviations from alert or action levels.

The staphylococci are one of the most common bacterial isolates found in clean room facilities. Staphylococci are the causative agents of many opportunistic human and animal infections and are considered among the most important pathogens isolated in the clinical microbiology laboratory [1]. Coagulase-negative staphylococci (CNS) represent the majority of the species and are considered to be saprophytic or potentially pathogenic. Several species of the CNS have been involved in nosocomial infections related to implanted medical devices such as intravenous catheters, prosthetic heart valves and orthopedic implants. The species that most frequently cause diseases are *Staphylococcus epidermidis*, *Staphylococcus haemolyticus* and *Staphylococcus saprophyticus*. Other significant opportunistic pathogens include *Staphylococcus hominis*, *Staphylococcus warneri*, *Staphylococcus capitis*, *Staphylococcus simulans*, *Staphylococcus cohnii*, *Staphylococcus xylosus*, *Staphylococcus saccharolyticus*, and *Staphylococcus lugdunensis* [2,3].

Consequently, isolation followed by comprehensive and accurate identification of the distinct *Staphylococcus* species is of extreme importance in order to initiate the proper antibiotic therapy. Several methods for the identification of *Staphylococcus* spp. have been proposed. These methods usually detect traditional phenotypic properties and are available in miniaturized form for automation and convenience. The identification methods now in use range from the fully automated identification and susceptibility test systems such as the VITEK 2 (bioMérieux, France) and the BD Phoenix system (Beckton Dickinson, MD, USA) to the API Staph identification kit (bioMérieux, France) [4-6]. In addition to the previous methods, gas-liquid chromatography analysis of cellular fatty acids is also used [7]. However, methods based on phenotypic characterization are hampered by the fact that they depend on the expression of metabolic activities and or morphological features and consequently, many isolates are still poorly identified and supplementary methods are often required for complete and accurate identification.

Molecular methods such as PCR-based fingerprinting have been also used successfully for *Staphylococcus* identification at the species level [8-12]. PCR amplification of the 16 S rRNA gene, *sodA* and the glyceraldehyde-3-phosphate dehydrogenase *gap* gene has been reported [13-19]. It has been described that *Staphylococcus aureus* as well as number of coagulase-negative staphylococci, including *Staphylococcus epidermidis*, *Staphylococcus capitis*, *Staphylococcus haemolyticus* and *Staphylococcus hominis* have a 42-kDa transferrin-binding protein (Tpn) in common, located within cell wall. This protein is a

member of the newly emerging family of multifunctional cell wall-associated glyceraldehyde-3-phosphate dehydrogenases which catalyze the conversion of glyceraldehyde-3-phosphate to 1, 3 diphosphoglycerate and incorporate binding sites for both transferrin and the serine protease plasmin [20-23]. Although the gene product in both *Staphylococcus saprophyticus* and *Staphylococcus warneri*, is unable to bind to human transferrin [22], the *gap* gene sequence can still be amplified by PCR. Analysis of the *gap* gene represents a high-throughput reproducible method that allows identification of distinct *Staphylococcus* species [23].

In this paper we describe a high-throughput and rapid identification method using both API Staph identification system followed by PCR analysis of the *gap* gene, for various *Staphylococcus* species isolated from environmental samples taken from air, surface, and personnel (filling, filtration and sterility areas) as a part of routine environmental monitoring program in pharmaceutical clean room facility at VACSERA (Holding Company for Biological Products & Vaccines) laboratories in Giza, Egypt.

Materials and methods

Sampling methods for routine environmental monitoring

Active air sampling

By slit-to-agar (Biological air sampler, model STA-204, New Brunswick scientific, NJ, USA) where air was drawn through slit, which rotates across the surface of an agar plate around central axis. The speed of rotation was set so that the whole surface of the plate was covered within one hour [24-26].

Passive air sampling

Settling plates (Petri dishes containing nutrient growth medium exposed to the environment for one hour) were used [27,28].

Surface and personnel sampling

Standard contact plates (RODAC: Replicate Organism Detection and Counting) were used. The convex agar meniscus allowed direct application to test surfaces (e.g. walls, floors, equipment) for hygiene control and personnel locations (hands, chest and mask). The medium used contained neutralizing agents, which inactivated any residual disinfectants on the surface to be tested and therefore enabled comparative results before and after cleaning [29-32].

Sampling conditions

Sampling was carried out in the operational state with process equipment running and personnel performing normal operations and in a specified condition. Sampling did not interfere with critical work zone protection or compromise the quality of any products prepared that was administered to patients. The operational condition for unidirectional airflow cabinets/isolators and

transfer devices was considered to be where an operator was working in any part of the clean air device. Sampling at the rest of the facility condition was continued at an agreed frequency to monitor baseline contamination levels. The operational conditions and the activities being performed at the time of testing were recorded.

Sampling locations

Samples were taken from air, surface and personnel filling, filtration and sterility laboratory areas. Care was taken that samples were taken from critical and adjacent areas.

Culture media used

Environmental monitoring samples were grown on Tryptone Soy Agar medium, (TSA), (Bacto, France). The media was modified and contained neutralizing agents (sodium thiosulphate and lecithin) to inactivate residual surface disinfectant present on the surface to be tested.

Incubation conditions

Plates were incubated at 30°C - 35°C (inverted) for at least 2 days to detect bacteria and at 20°C - 25°C for at least 5 days to detect mould and fungi.

Interpretation of the test results

After appropriate incubation, microbiological contamination was detected by observing colonies that were enumerated as colony forming units (cfu) on each plate. Separate colony counts were tabulated for mould and bacteria.

Note: For plates used in the slit to agar sampler, cfu reading was corrected to cfu/m³ according to standardized equations.

Bacterial strains and growth conditions

Bacterial strains used in this study were isolated from air, surface, and personnel in a pharmaceutical clean room and were kept at -80°C in glycerol stock form.

Reference strains used PCR amplification of *gap* gene were *Staphylococcus aureus* ATCC 6538 used as positive control and *Pseudomonas aeruginosa* ATCC 9027 used as a negative control.

Identification of environmental isolates by commercial Identification system API Staph

Preparation of the Strip was done following the standard procedure (bioMérieux, France). Briefly, strains were sub-cultured on Columbia Blood Agar (or P Agar), (Oxoid, England), 18-24 hours at 37°C, and checked for purity. All isolates were subjected to Gram stain to check for morphology and to confirm that they belong to the Micrococcaceae family. A homogenous suspension of each bacterial isolate was prepared in the supplied API Staph medium with turbidity corresponding to 0.5 McFarland standard. The suspension was used immediately.

The micro-tubes of the API strip were filled with the bacterial suspension; mineral oil was added to the micro-tubes that needed to be incubated under anaerobic

conditions. The lid was placed and the incubation box (lid and tray) was incubated at 37°C for 20-24 hours. After the incubation period the color was observed in each micro-tube and compared to the negative control. Appropriate reagents were added as required to certain reaction and as described by the kit manual. Identification was carried using the API Staph identification software (bioMérieux, France).

Chromosomal DNA isolation

One loopful from each glycerol stock of each isolate was streaked on TSA (Tryptic Soy Agar), (Bacto, France), plate to obtain well isolated colonies. Plates were incubated at 35°C - 37°C for 18-24 h. After incubation, one colony was inoculated into 3 ml LB broth and incubated overnight at 37°C. On the next day, the cultures were centrifuged at 4,000 g for 10 minutes at room temperature. Genomic DNA was extracted by using the EaZy Nucleic Acid Isolation Bacterial DNA Kit (Omega Biotech) following the instructions manual. The final DNA was eluted with water and the concentration of the DNA was determined at 260 nm using the spectrophotometer (Biotech Engineering, 80 DV UV/VIS, UK).

PCR analysis

PCR amplification reactions were performed using a pair of primers selected on the basis of the *gap* gene nucleotide sequence of *Staphylococcus aureus* (933-bp long, from the Genbank database under accession number AJ133520). A 26-nucleotide forward primer: GF-1 (5'-ATGGTTTTGGTAGAATTGGTCGTTTA-3'), corresponding to positions 22 to 47 of the *gap* gene, and a 25-nucleotide reverse primer, GR-2 (5'-GACATTCGT-TATCATAACCAAGCTG-3'), corresponding to positions 956 to 932 were selected. Primers were synthesized by (Alpha DNA, Montreal, Quebec, Canada). PCR amplification was carried out using DNA thermal cycler (Eppendorf, Gradient, Hamburg, Germany) by using PCR kit (PuReTaq Ready-To-Go™ PCR Beads from GE Healthcare, USA) following the manufacturer instructions. Briefly, the reaction contained 100 pmoles of each primer (in 0.1 µl volumes), 0.75 to 1 µg of template DNA (in 1 µl volumes), added to one tube of stable beads and water to 25 µl. The stable beads contain stabilizers, BSA (Bovine Serum Albumin), (dATP, dCTP, dGTP, and dTTP), ~ 2.5 units of pure Taq DNA polymerase and reaction buffer. DNA was denatured at 94°C for 10 minutes. This was followed by 40 cycles of DNA denaturation at 94°C for 30 sec, primer annealing at 55°C for 30 sec and extension at 72°C for 1 min. After the final cycle, reactions were terminated by an extra cycle at 72°C for 5 minutes. To visualize the product, 8 µl of each PCR reaction were mixed with 3 µl 6× loading dye (GenBioscience) and loaded on 1% Agarose gel: (Metaphor Agarose) was used

for fine separation and resolution of small nucleic acids. A 100 bp DNA ladder (GenBioscience) was used as a marker.

Statement of Ethical Approval

All experiments, involving any samples taken from personnel and done in this study, were done in accordance and approval of the ethical committee at Cairo University, Cairo, Egypt.

In addition, all personnel who contributed any samples, (swabs or any other form), did this according to their informed consent.

Results and Discussion

Identification of environmental isolates from air, surface, personnel by using API Staph system:

A total of 43 isolates were tested using the API Staph test system (biomerieux, France). 23 isolates were taken from surfaces of filling areas (filling machine panels), sterility area (Laminar Air Flow Buttons).15 isolates were taken from active air filling areas (filtration, filling, capping, sterility and Fedagarie room (autoclave room used for sterilization of gowns and different items used in the production process). Five samples were taken from personnel. The isolates were taken according to a routine environmental monitoring program.

Most of the isolates drawn from surface represent 65% of total isolates; the samples comply with the European commission guide due to GMP.

The result of the API Staph identification showed that among the 23 isolate taken from surfaces almost half of them (12 isolates) were identified as *Staphylococcus hominis*, three isolates were identified as *Staphylococcus epidermidis*, two isolates of each of *Staphylococcus xylo-* *sus* and *Staphylococcus aureus*, and one isolate of each of *Staphylococcus warneri*, *Staphylococcus sciuri*, *Staphylococcus lugdunensis*, and *Staphylococcus haemolyticus*.

Among the 15 samples taken from air, more than half (8 isolates) were identified as *Staphylococcus hominis*, four isolates were identified as *Staphylococcus haemolyticus*, and one of each of *Staphylococcus epidermidis*, *Staphylococcus lugdunensis* and *Staphylococcus warneri*.

Isolates taken from personnel were identified as two being *Staphylococcus hominis*, two isolates as *Staphylococcus epidermidis* and one isolate as *Staphylococcus aureus*

The result of the API Staph identification is summarized in table 1 which shows the different species of *Staphylococcus* isolated from each main source (surface, personnel or air) and the % identity of each isolate.

The result shows that almost half of the total isolates (22 isolates) regardless of origin were identified as *Staphylococcus hominis*, a coagulase-negative member of the bacterial genus *Staphylococcus*.

Table 1 Different species of *Staphylococcus* and their % identity

API Identification	Number of isolates	% identity
<i>Staphylococcus hominis</i>	22	47.3%-80%
<i>Staphylococcus epidermidis</i>	6	89%-97.8%
<i>Staphylococcus haemolyticus</i>	5	41%-89.9%
<i>Staphylococcus aureus</i>	3	69%-99%
<i>Staphylococcus lugdunensis</i>	2	42%-64.7%
<i>Staphylococcus warneri</i>	2	38%-74.7%
<i>Staphylococcus xylo-</i> <i>sus</i>	2	90%-99.8%
<i>Staphylococcus sciuri</i>	1	27.3%
Total	43	

Staphylococcus hominis occurs very commonly as a harmless commensal on human and animal skin, which explains its abundance among the isolates from different sources. However, like many other coagulase-negative staphylococci, *S. hominis* may occasionally cause infection in patients whose immune system is compromised, for example by chemotherapy or predisposing illness.

A total of six isolates were identified as *Staphylococcus epidermidis* which is also coagulase-negative and occurs frequently on the skin of humans and animals and in mucous membranes. Due to contamination, *S. epidermidis* is probably the most common species found in laboratory tests which explains its abundance among the isolates. *S. epidermidis* is usually non-pathogenic, it is an important cause of infection in patients whose immune system is compromised, or who have indwelling catheters. Many strains produce a biofilm that allows them to adhere to the surfaces of medical prostheses.

A total of five isolates were identified as *Staphylococcus haemolyticus* a coagulase-negative, and catalase positive staphylococci, frequently found as a commensal organism on the skin of humans and animals, *S. haemolyticus* occurs infrequently as a cause of soft-tissue infections, usually in immunocompromised patients.

S. haemolyticus is resistant to multiple antimicrobial agents. Resistance to vancomycin has been recorded, and this is a cause for concern because such resistance could be acquired by other, more pathogenic staphylococci [33].

Three isolates were identified as *Staphylococcus aureus*, the most common cause of Staph infections. It is frequently living on the skin or in the nose of a person. Approximately 20-30% of the general populations are "Staph carriers".

Staphylococcus aureus can cause a range of illnesses from minor skin infections, such as pimples, impetigo, boils, cellulites, furuncles, carbuncles, scalded skin syndrome and abscesses, to life-threatening diseases, such as pneumonia, meningitis, osteomyelitis, endocarditis, toxic shock syndrome (TSS), and septicemia [34].

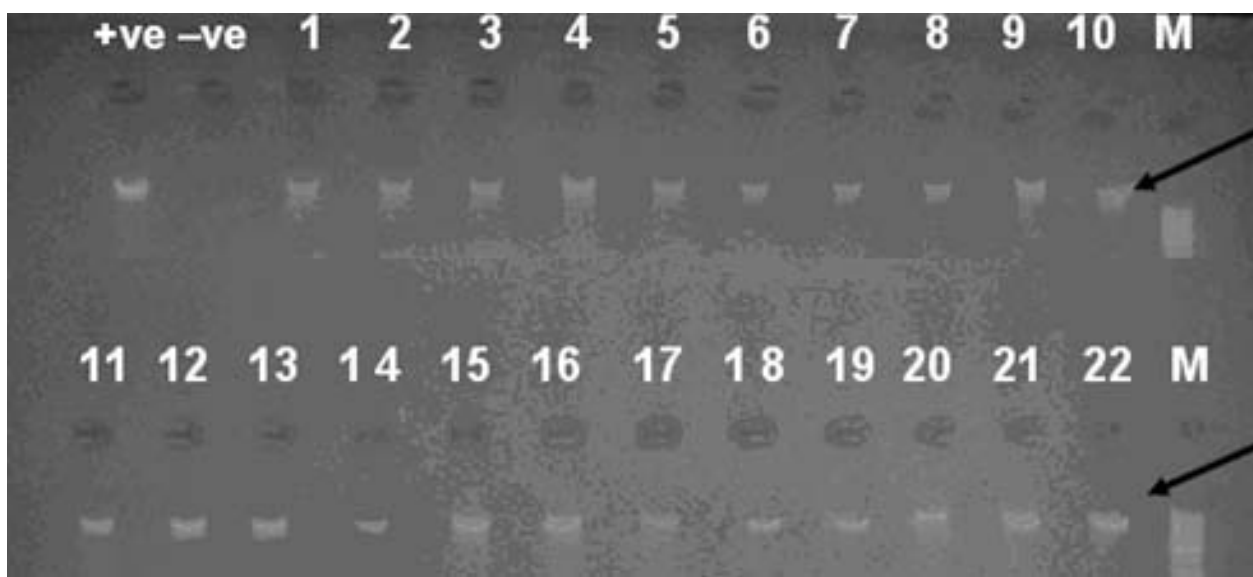


Figure 1 PCR products of isolates numbered 1 to 22. Agarose gel electrophoresis of 933-bp PCR amplification products from chromosomal DNA from staphylococcal species using primers GF-1 and GR-2, M: Ladder marker, black arrow refers to the correct size product of the gap gene corresponding to 933 base pairs. +ve: *Staphylococcus aureus* ATCC 6538,-ve: *Pseudomonas aeruginosa* ATCC 9027. Samples 1-22 except 3&4: *Staphylococcus hominis*, 3: *Staphylococcus aureus* and 4: *Staphylococcus sciuri*.

Other *Staphylococcus* species identified in this study as *S. xylosus*, *S. warneri*, *S. lugdunensis* and *S. sciuri* are all common commensals on human skin and mucous membranes. Consequently, the identity of the *Staphylococcus* isolates showed a typical distribution in an environmental sample with the majority of the isolates being those commonly found as commensals on skin surfaces.

35 out of the 43 isolates (81%) identified using API Staph identification system showed identity range between (57.1%-99.8%). Although the majority of the isolates were in a "good identification" range (70%), several isolates showed a relatively weak or poor identification. We decided to investigate the clones on a molecular level by attempting to amplify the glyceraldehyde-3-phosphate

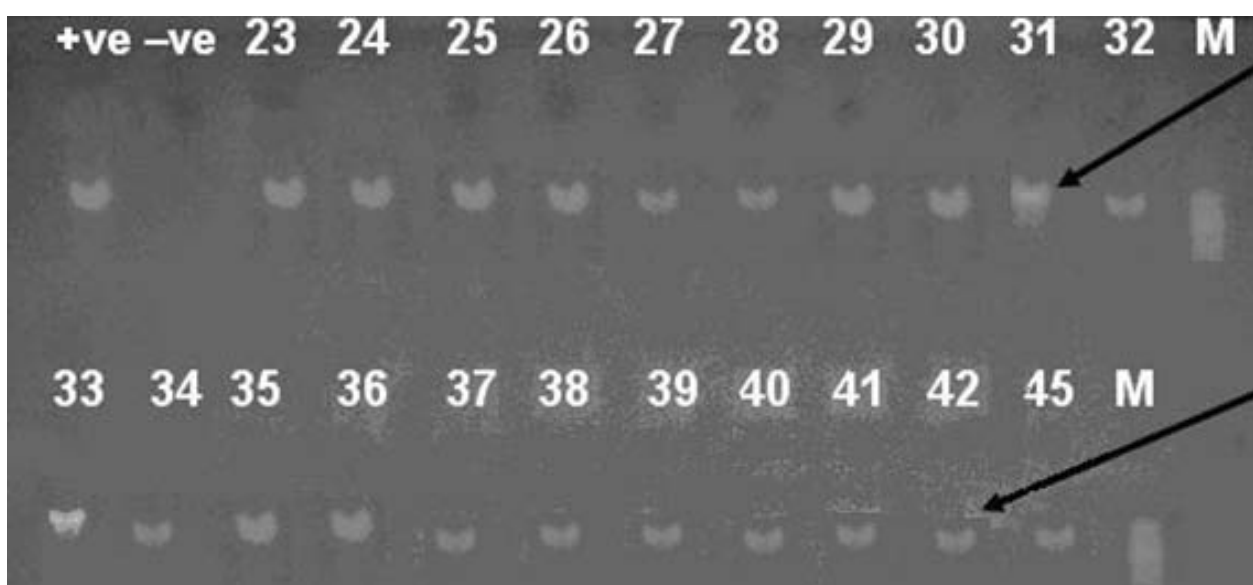


Figure 2 PCR products of isolates numbered 23 to 45. Agarose gel electrophoresis of 933-bp PCR amplification products from chromosomal DNA from staphylococcal species using primers GF-1 and GR-2, M, +ve, -ve and black arrow are the same as in figure 1. Samples 23, 45: *Staphylococcus hominis*, 24-29: *Staphylococcus epidermidis*, 30, 31: *Staphylococcus aureus*, 32, 33: *Staphylococcus lugdunensis*, 34, 35: *Staphylococcus warneri*, 36, 37: *Staphylococcus xylosus* and 38-42: *Staphylococcus haemolyticus*.

dehydrogenase *gap* gene. The *gap* gene has proved to be a very well conserved gene that can be used as a useful tool in PCR assays for identification of *Staphylococcus* species [15]. The *gap* gene product glyceraldehyde-3-phosphate dehydrogenase has been discovered to be located within the cell walls of *S. aureus* and other coagulase-negative staphylococci. The pair of primers used in this study successfully primed the synthesis of a 933 bp fragment corresponding to the *gap* gene. All the isolates gave the corresponding PCR band equivalent to the *gap* gene product as seen after agarose gel electrophoresis (Figures 1 and 2) confirming the identity of the isolates as belonging to the genus *Staphylococcus*. All the *Staphylococcus* species identified in our study (table 1) were similarly identified with PCR amplification of the *gap* gene in previous studies [15,19,35] confirming the reproducibility, reliability and efficiency of the method.

In conclusion, we used the API Staph identification system followed by PCR amplification of the *gap* gene to identify various *Staphylococcus* species isolated from a clean room environment. The methods showed a reliable and rapid identification and can be used for the analysis of large number of samples in a high-throughput manner.

Consent

Written informed consent was obtained from the personnel that donated samples for publication of this manuscript and accompanying images. A copy of the written consent is available for review by the Editor-in-Chief of this journal.

Acknowledgements

We would like to thank Dr. Mohamed Rabei, chairman of VACSERA for his approval to carry out the work and Dr. Mohamed Abbass, director of the Molecular Biology Lab for his tremendous help and allowing us to use the required equipment. Also, we thank Dr. Ramy Karam Aziz for his help in earlier parts of the work.

Author details

¹VACSERA, The Holding Company for Biological Products & Vaccines, Giza, 22311, Egypt. ²Department of Microbiology and Immunology, Faculty of Pharmacy, Cairo University, Cairo, 11562, Egypt.

Authors' contributions

NSS carried out the experimental procedure. ASY supervised and participated in the experimental procedure and drafted the manuscript. MAA designed the study. All authors read and approved the final manuscript.

Competing interests

The authors declare that they have no competing interests.

Received: 23 September 2010 Accepted: 4 November 2010

Published: 4 November 2010

References

1. Fidalgo S, Vazquez F, Mendoza MC, Perez F, Mendez FJ: Bacteremia due to *Staphylococcus epidermidis*: microbiologic, epidemiologic, clinical, and prognostic features. *Rev Infect Dis* 1990, **12**(3):520-528.

2. Calvo J, Hernandez JL, Farinas MC, Garcia-Palomo D, Agüero J: Osteomyelitis caused by *Staphylococcus schleiferi* and evidence of misidentification of this *Staphylococcus* species by an automated bacterial identification system. *J Clin Microbiol* 2000, **38**(10):3887-3889.
3. Shuttleworth R, Behme RJ, McNabb A, Colby WD: Human isolates of *Staphylococcus caprae*: association with bone and joint infections. *J Clin Microbiol* 1997, **35**(10):2537-2541.
4. Ieven M, Verhoeven J, Pattyn SR, Goossens H: Rapid and economical method for species identification of clinically significant coagulase-negative staphylococci. *J Clin Microbiol* 1995, **33**(5):1060-1063.
5. Miller JM, Biddle JW, Quenzer VK, McLaughlin JC: Evaluation of Biolog for identification of members of the family Micrococcaceae. *J Clin Microbiol* 1993, **31**(12):3170-3173.
6. Watts JL, Washburn PJ: Evaluation of the Staph-Zym system with staphylococci isolated from bovine intramammary infections. *J Clin Microbiol* 1991, **29**(1):59-61.
7. Stoakes L, John MA, Lannigan R, Schieven BC, Ramos M, Harley D, Hussain Z: Gas-liquid chromatography of cellular fatty acids for identification of staphylococci. *J Clin Microbiol* 1994, **32**(8):1908-1910.
8. Cuny C, Witte W: Typing of *Staphylococcus aureus* by PCR for DNA sequences flanked by transposon Tn916 target region and ribosomal binding site. *J Clin Microbiol* 1996, **34**(6):1502-1505.
9. Goh SH, Santucci Z, Kloos WE, Faltyn M, George CG, Driedger D, Hemmingsen SM: Identification of *Staphylococcus* species and subspecies by the chaperonin 60 gene identification method and reverse checkerboard hybridization. *J Clin Microbiol* 1997, **35**(12):3116-3121.
10. Kumari DN, Keer V, Hawkey PM, Parnell P, Joseph N, Richardson JF, Cookson B: Comparison and application of ribosome spacer DNA amplicon polymorphisms and pulsed-field gel electrophoresis for differentiation of methicillin-resistant *Staphylococcus aureus* strains. *J Clin Microbiol* 1997, **35**(4):881-885.
11. Mendoza M, Meugnier H, Bes M, Etienne J, Freney J: Identification of *Staphylococcus* species by 16S-23S rDNA intergenic spacer PCR analysis. *Int J Syst Bacteriol* 1998, **48**(Pt 3):1049-1055.
12. Marcos JY, Soriano AC, Salazar MS, Moral CH, Ramos SS, Smeltzer MS, Carrasco GN: Rapid identification and typing of *Staphylococcus aureus* by PCR-restriction fragment length polymorphism analysis of the *aroA* gene. *J Clin Microbiol* 1999, **37**(3):570-574.
13. Becker K, Harmsen D, Mellmann A, Meier C, Schumann P, Peters G, von Eiff C: Development and evaluation of a quality-controlled ribosomal sequence database for 16S ribosomal DNA-based identification of *Staphylococcus* species. *J Clin Microbiol* 2004, **42**(11):4988-4995.
14. Fontana C, Favaro M, Pelliccioni M, Pistoia ES, Favalli C: Use of the MicroSeq 500 16S rRNA gene-based sequencing for identification of bacterial isolates that commercial automated systems failed to identify correctly. *J Clin Microbiol* 2005, **43**(2):615-619.
15. Yugueros J, Temprano A, Berzal B, Sanchez M, Hernandez C, Luengo JM, Naharro G: Glyceraldehyde-3-phosphate dehydrogenase-encoding gene as a useful taxonomic tool for *Staphylococcus* spp. *J Clin Microbiol* 2000, **38**(12):4351-4355.
16. Poyart C, Quesne G, Boumaila C, Trieu-Cuot P: Rapid and accurate species-level identification of coagulase-negative staphylococci by using the *sodA* gene as a target. *J Clin Microbiol* 2001, **39**(12):4296-4301.
17. Sivadon V, Rottman M, Chaverot S, Quincampoix JC, Quivret V, de Mazancourt P, Bernard L, Trieu-Cuot P, Feron JM, Lortat-Jacob A, et al: Use of genotypic identification by *sodA* sequencing in a prospective study to examine the distribution of coagulase-negative *Staphylococcus* species among strains recovered during septic orthopedic surgery and evaluate their significance. *J Clin Microbiol* 2005, **43**(6):2952-2954.
18. Blaiotta G, Casaburi A, Villani F: Identification and differentiation of *Staphylococcus carnosus* and *Staphylococcus simulans* by species-specific PCR assays of *sodA* genes. *Syst Appl Microbiol* 2005, **28**(6):519-526.
19. Ghebremedhin B, Layer F, König W, König B: Genetic classification and distinguishing of *Staphylococcus* species based on different partial *gap*, 16S rRNA, *hsp60*, *rpoB*, *sodA*, and *tuf* gene sequences. *J Clin Microbiol* 2008, **46**(3):1019-1025.
20. Modun BJ, Cockayne A, Finch R, Williams P: The *Staphylococcus aureus* and *Staphylococcus epidermidis* transferrin-binding proteins are expressed in vivo during infection. *Microbiology* 1998, **144**(Pt 4):1005-1012.

21. Modun B, Evans RW, Joannou CL, Williams P: **Receptor-mediated recognition and uptake of iron from human transferrin by *Staphylococcus aureus* and *Staphylococcus epidermidis*.** *Infect Immun* 1998, **66**(8):3591-3596.
22. Modun B, Kendall D, Williams P: **Staphylococci express a receptor for human transferrin: identification of a 42-kilodalton cell wall transferrin-binding protein.** *Infect Immun* 1994, **62**(9):3850-3858.
23. Modun B, Williams P: **The staphylococcal transferrin-binding protein is a cell wall glyceraldehyde-3-phosphate dehydrogenase.** *Infect Immun* 1999, **67**(3):1086-1092.
24. Gosden PE, MacGowan AP, Bannister GC: **Importance of air quality and related factors in the prevention of infection in orthopaedic implant surgery.** *J Hosp Infect* 1998, **39**(3):173-180.
25. Leeming JP, Pryce-Roberts DM, Kendrick AH, Smith EC: **The efficacy of filters used in respiratory function apparatus.** *J Hosp Infect* 1995, **31**(3):205-210.
26. Ho J, Spence M, Duncan S: **An approach towards characterizing a reference sampler for culturable biological particle measurement.** *Journal of Aerosol Science* 2005, **36**(5-6):557-573.
27. Pollok NL, Williams GH, Shay DE, Barr CE: **Laminar air purge of microorganisms in dental aerosols.** *J Am Dent Assoc* 1970, **81**(5):1131-1139.
28. Kelkar U, Kelkar S, Bal AM, Kulkarni S, Kulkarni S: **Microbiological evaluation of various parameters in ophthalmic operating rooms. The need to establish guidelines.** *Indian J Ophthalmol* 2003, **51**(2):171-176.
29. Lemmen SW, Häfner H, Zoldann D, Amedick G, Luticken R: **Comparison of two sampling methods for the detection of Gram-positive and Gram-negative bacteria in the environment: moistened swabs versus Rodac plates.** *Int J Hyg Environ Health* 2001, **203**(3):245-248.
30. Faure O, Fricker-Hidalgo H, Lebeau B, Mallaret MR, Ambroise-Thomas P, Grillot R: **Eight-year surveillance of environmental fungal contamination in hospital operating rooms and haematological units.** *J Hosp Infect* 2002, **50**(2):155-160.
31. Favero MS, Puleo JR, Marshall JH, Oxborrow GS: **Comparative levels and types of microbial contamination detected in industrial clean rooms.** *Appl Microbiol* 1966, **14**(4):539-551.
32. Poletti L, Pasquarella C, Pitzurra M, Savino A: **Comparative efficiency of nitrocellulose membranes versus RODAC plates in microbial sampling on surfaces.** *J Hosp Infect* 1999, **41**(3):195-201.
33. Froggatt JW, Johnston JL, Galetto DW, Archer GL: **Antimicrobial resistance in nosocomial isolates of *Staphylococcus haemolyticus*.** *Antimicrob Agents Chemother* 1989, **33**(4):460-466.
34. Chambers HF: **The changing epidemiology of *Staphylococcus aureus*?** *Emerg Infect Dis* 2001, **7**(2):178-182.
35. Layer F, Ghebremedhin B, König W, König B: **Differentiation of *Staphylococcus* spp. by terminal-restriction fragment length polymorphism analysis of glyceraldehyde-3-phosphate dehydrogenase-encoding gene.** *J Microbiol Methods* 2007, **70**(3):542-549.

doi:10.1186/1756-0500-3-278

Cite this article as: Sheraba et al.: High-throughput molecular identification of *Staphylococcus* spp. isolated from a clean room facility in an environmental monitoring program. *BMC Research Notes* 2010 **3**:278.

Submit your next manuscript to BioMed Central and take full advantage of:

- Convenient online submission
- Thorough peer review
- No space constraints or color figure charges
- Immediate publication on acceptance
- Inclusion in PubMed, CAS, Scopus and Google Scholar
- Research which is freely available for redistribution

Submit your manuscript at
www.biomedcentral.com/submit

