



Polymicrobial Sepsis Impairs Antigen-Specific Memory CD4 T Cell-Mediated Immunity

Frances V. Sjaastad¹, Tamara A. Kucaba², Thamotharampillai Dileepan^{3,4}, Whitney Swanson², Cody Dail⁵, Javier Cabrera-Perez^{1,6}, Katherine A. Murphy², Vladimir P. Badovinac^{7,8,9} and Thomas S. Griffith^{1,2,4,10,11*}

¹ Microbiology, Immunology, and Cancer Biology Ph.D. Program, University of Minnesota, Minneapolis, MN, United States, ² Department of Urology, University of Minnesota, Minneapolis, MN, United States, ³ Department of Microbiology and Immunology, University of Minnesota, Minneapolis, MN, United States, ⁴ Center for Immunology, University of Minnesota, Minneapolis, MN, United States, ⁵ Medical Student Summer Research Program in Infection and Immunity, University of Minnesota, Minneapolis, MN, United States, ⁶ Medical Scientist Training Program, University of Minnesota, Minneapolis, MN, United States, ⁷ Interdisciplinary Graduate Program in Immunology, University of Iowa, Iowa City, IA, United States, ⁸ Department of Pathology, University of Iowa, Iowa City, IA, United States, ⁹ Department of Microbiology and Immunology, University of Iowa, Iowa City, IA, United States, ¹⁰ Masonic Cancer Center, University of Minnesota, Minneapolis, MN, United States, ¹¹ Minneapolis VA Health Care System, Minneapolis, MN, United States

OPEN ACCESS

Edited by:

Vandana Kalia,
University of Washington School of
Medicine, United States

Reviewed by:

Adrian Piliponsky,
Seattle Children's Research Institute,
United States
Stefanie Barbara Flohé,
Essen University Hospital, Germany

*Correspondence:

Thomas S. Griffith
tgriffit@umn.edu

Specialty section:

This article was submitted to
Immunological Memory,
a section of the journal
Frontiers in Immunology

Received: 26 February 2020

Accepted: 03 July 2020

Published: 12 August 2020

Citation:

Sjaastad FV, Kucaba TA, Dileepan T, Swanson W, Dail C, Cabrera-Perez J, Murphy KA, Badovinac VP and Griffith TS (2020) Polymicrobial Sepsis Impairs Antigen-Specific Memory CD4 T Cell-Mediated Immunity. *Front. Immunol.* 11:1786. doi: 10.3389/fimmu.2020.01786

Patients who survive sepsis display prolonged immune dysfunction and heightened risk of secondary infection. CD4 T cells support a variety of cells required for protective immunity, and perturbations to the CD4 T cell compartment can decrease overall immune system fitness. Using the cecal ligation and puncture (CLP) mouse model of sepsis, we investigated the impact of sepsis on endogenous Ag-specific memory CD4 T cells generated in C57BL/6 (B6) mice infected with attenuated *Listeria monocytogenes* (Lm) expressing the I-A^b-restricted 2W1S epitope (Lm-2W). The number of 2W1S-specific memory CD4 T cells was significantly reduced on day 2 after sepsis induction, but recovered by day 14. In contrast to the transient numerical change, the 2W1S-specific memory CD4 T cells displayed prolonged functional impairment after sepsis, evidenced by a reduced recall response (proliferation and effector cytokine production) after restimulation with cognate Ag. To define the extent to which the observed functional impairments in the memory CD4 T cells impacts protection to secondary infection, B6 mice were infected with attenuated *Salmonella enterica*-2W (Se-2W) 30 days before sham or CLP surgery, and then challenged with virulent Se-2W after surgery. Pathogen burden was significantly higher in the CLP-treated mice compared to shams. Similar reductions in functional capacity and protection were noted for the endogenous OVA₃₂₃-specific memory CD4 T cell population in sepsis survivors upon Lm-OVA challenge. Our data collectively show CLP-induced sepsis alters the number and function of Ag-specific memory CD4 T cells, which contributes (in part) to the characteristic long-lasting immunoparalysis seen after sepsis.

Keywords: sepsis, immune suppression, CD4 T cells, memory, IFN-gamma

INTRODUCTION

The importance of a functional immune system for overall health is dramatically illustrated by individuals with immune system defects being highly susceptible to serious and often life-threatening infections. States of immune deficiency can be congenital (e.g., impaired T and/or B cell development) or acquired [e.g., HIV infection, iatrogenic (post-organ transplant) immune suppression, or surgery/trauma]. Studies interrogating the events leading to acquired immunodeficiency are done with the goal of designing treatment modalities to restore immune system function and reduce the susceptibility to infection.

Sepsis causes millions of deaths annually worldwide (1). Defined as a systemic inflammatory response syndrome during a disseminated infection (2, 3), early stages of sepsis are marked by a potentially fatal hyperinflammatory state driven by proinflammatory cytokines (4–6). Concurrent with this hyperinflammation is system-wide transient loss of multiple immune cell types that decreases the ability of the septic host to respond to the primary infection or secondary nosocomial infection. Advancements in critical care medicine have improved survival rates of patients following the initial sepsis-inducing injury (7–10), where acute death from sepsis is no longer the major cause of mortality for these patients. Currently, ~70% of sepsis-related deaths occur after the first 3 days of the disorder as the result of a secondary infection, with many patient deaths occurring weeks and months later (11). Interestingly, the sepsis-induced lymphopenia is transient, and the once hyperinflammatory immune response transitions to a prolonged immunosuppressive state even though the cellular composition of the immune system numerically returns to normal. In fact, the prolonged immune suppression that develops after a septic event is now considered a leading reason for the extended period of increased susceptibility to pathogens normally handled by the immune system in healthy individuals (11, 12).

CD4 T cells are among the immune cells significantly depleted during the acute stage of sepsis (13), but gradually recover during the immunosuppressive phase (14). CD4 T cells support the function of a variety of immune cells needed to mount a productive and protective immune response (15), and perturbations in the CD4 T cell compartment can dramatically affect overall immune system fitness. The ability to develop and sustain memory cells after infection or immunization is a hallmark of adaptive immunity and basis for protective vaccination against infectious disease (16, 17). Memory CD4 T cells possess several important features that distinguish them from naïve CD4 T cells. First, there are increased numbers of memory CD4 T cells compared to precursors, providing better coverage and a more rapid cellular response during re-challenge. Memory CD4 T cells have experienced cell-intrinsic “programming” changes that allow for rapid expression of effector cytokines, chemokines, and cytotoxic molecules. Additionally, memory CD4 T cells establish residence in both lymphoid and non-lymphoid tissues (18, 19). Finally, the number of memory CD4 T cells present at the end of the contraction phase of a primary response is maintained for the life of the host (20). Maintenance of memory CD4 T cell responses

over time is a dynamic process, depending on subsequent encounters with either cognate or non-related Ag/infections that have the potential to change their phenotype and function (15). Similar to the primary response, the magnitude of a memory CD4 T cell response directly correlates with the quantity and quality of memory CD4 T cells present at the time of re-challenge. Thus, changes in composition and function of naive and memory CD4 T cells can result in impaired immunity and increased susceptibility to subsequent infections (21, 22). The present study took advantage of our ability to track the number and function of endogenous Ag-specific memory CD4 T cells in the wake of a septic event [using the cecal ligation and puncture (CLP) model of polymicrobial sepsis]. Our data demonstrate sepsis leads to dramatic and transient decline in pre-existing memory CD4 T cell numbers, with sustained functional impairments, which contribute to the overall increased susceptibility to secondary infections in sepsis survivors.

MATERIALS AND METHODS

Mice

Female C57BL/6 mice (8-weeks old) were purchased from the National Cancer Institute (Frederick, MD). Female pet store mice were purchased from local pet stores in the Minneapolis-St. Paul, MN metropolitan area. All mice were housed in AALAC-approved animal facilities at the University of Minnesota at the appropriate biosafety level (BSL-1/BSL-2 for SPF B6 mice, and BSL-3 for cohoused B6 and pet store mice). SPF B6 and pet store mice were cohoused at a ratio of 8:1 in large rat cages for 60 days to facilitate microbe transfer (23, 24). In all experiments, including those using cohoused mice, mice were age-matched. Experimental procedures were approved by the University of Minnesota Institutional Animal Care and Use Committees and performed following the Office of Laboratory Animal Welfare guidelines and PHS Policy on Human Cancer and Use of Laboratory Animals.

Cecal Ligation and Puncture (CLP)

Sepsis was induced by CLP (25). Briefly, mice were anesthetized using isoflurane (2.5% gas via inhalation). The abdomen was shaved and disinfected with 5% povidone-iodine antiseptic. Bupivacaine (6 mg/kg s.c.) was then administered at the site where a midline incision was made. The distal third (~1 cm) of the cecum was ligated with 4–0 silk suture and punctured once with a 25-g needle to extrude a small amount of cecal content. After returning the cecum to the abdomen, the peritoneum was closed via continuous suture and the skin was sealed using surgical glue (Vetbond; 3M, St. Paul, MN). Post-operative analgesia and fluid resuscitation occurred at the conclusion of surgery and the following 3 days in the form of meloxicam (2 mg/kg) in 1 ml saline. Mice were monitored daily for weight loss and pain for at least 5 days post-surgery. To control for non-specific changes from the surgery, sham mice underwent the same laparotomy procedure excluding ligation and puncture.

Experimental Pathogens and Infections

C57BL/6 mice were immunized with attenuated *Listeria monocytogenes*-2W1S (Lm-2W1S) or Lm-OVA (10^7 CFU i.v.) or attenuated *Salmonella enterica* serovar Typhimurium strain BRD509-2W1S (*Se*-2W1S; AroA⁻; 10^6 CFU i.v.) 30 days before sham or CLP surgery to generate memory CD4 T cells. In some experiments, mice received a second infection with attenuated Lm-2W1S (10^7 CFU i.v.), virulent Lm-OVA (10^4 CFU i.v.), or virulent *Se*-2W1S (10^3 CFU i.v.). In experiments where mice received a secondary virulent Lm-OVA bacterial challenge, mice were depleted of CD8 T cells by injecting 100 μ g anti-CD8 mAb (clone 2.43) i.v. 3, 2, and 1 days prior to secondary infection. In experiments where mice received a secondary virulent *Se*-2W1S bacterial infection, some of the mice were depleted of CD4 T cells by injecting 800 μ g of anti-CD4 mAb (clone GK1.5) i.v. 7 days before and 400 μ g i.v. 4 and 3 days before challenge. To measure the clearance of the secondary infection of virulent Lm-OVA or virulent *Se*-2W1S, livers and spleens were removed 3 or 7 days post-infection, respectively, placed in 0.2% IGEPAL solution (Sigma-Aldrich), and homogenized. Serial dilutions of the homogenate were plated on tryptic soy broth agar containing 50 μ g/ml streptomycin (for Lm-OVA) or 100 μ g/ml streptomycin (for *Se*-2W1S), which restricted bacterial growth to the streptomycin-resistant Lm-OVA or *Se*-2W1S used for secondary infection. Bacterial colonies were counted after 24 h incubation at 37°C (26–28).

Enrichment and Analysis of Ag-Specific CD4 T Cells

I-A^b-specific tetramers containing 2W1S (EAWGALANWAVDSA) or OVA_{323–339} (ISQAVHAAHAEINEAGR) were used to identify Ag-specific CD4 T cells (29–31). Briefly, I-A^b β -chains containing the 2W1S or OVA_{323–339} epitopes covalently linked to the I-A^b β -chain were produced in *Drosophila melanogaster* S2 cells. 2W1S:I-A^b or OVA_{323–339}:I-A^b monomers were then biotinylated and made into tetramers with streptavidin-phycoerythrin (SA-PE; Prozyme). To enrich for Ag-specific CD4 T cells, tetramers (10 nM final concentration) were then added to single cell suspensions in 300 μ l tetramer staining buffer (PBS containing 5% FBS, 2mM EDTA, 1:50 normal mouse serum, and 1:100 anti-CD16/32 mAb). The cells were incubated in the dark at room temperature for 1 h, followed by a wash in 10 ml ice cold FACS Buffer. The tetramer-stained cells were then resuspended in 300 μ l FACS Buffer, mixed with 25 μ l of anti-PE mAb-conjugated magnetic microbeads (StemCell Technologies), and incubated in the dark on ice for 30 min. The cells were washed, resuspended in 3 ml cold FACS Buffer, and passed through an EasySep Magnet (StemCell Technologies) to yield the enriched tetramer positive population. The resulting enriched fractions were stained with a cocktail of fluorochrome-labeled mAb (see below). Cell numbers for each sample were determined using AccuCheck Counting Beads (Invitrogen). Samples were then analyzed using a Fortessa flow cytometer (BD) and FlowJo software (TreeStar Inc., Ashland, OR). The percentage of 2W1S:I-A^{b+} or OVA_{323–339}:I-A^{b+} events was multiplied by the total number of cells in the enriched fraction to calculate the total number of 2W1S:I-A^{b-} or OVA_{323–339}:I-A^{b-}-specific CD4 T cells.

In vivo peptide stimulation was used to determine Ag-specific CD4 T cell cytokine production, as previously described (31–34). Briefly, infected mice were injected i.v. with 100 μ g of the 2W1S or OVA_{323–339} peptides (synthesized by Bio-Synthesis, Louisville, TX). After 4 h, spleens were harvested in media containing 10 μ g/ml brefeldin A. The resulting cell suspensions were fixed, permeabilized, and stained with anti-IFN γ , -TNF, and -IL-2 mAb.

Flow Cytometry

To assess the expression of cell surface proteins, cells were incubated with fluorochrome-conjugated mAb at 4°C for 30 min. The cells were then washed with FACS buffer. For some experiments, the cells were then fixed with PBS containing 2% paraformaldehyde. In procedures requiring intracellular staining, cells were permeabilized following surface staining using the transcription factor staining kit (Tonbo), stained for 1 h at 20°C with a second set of fluorochrome-conjugated mAb, and suspended in FACS buffer for acquisition. The fluorochrome-conjugated mAb used in both surface and intracellular stainings were as follows: Dump gate: APC-Cy7 CD11b (clone M1/70; Tonbo), APC-Cy7 CD11c (clone N418; Tonbo), APC-Cy7 B220 (clone RA3-6B2; Tonbo), APC-Cy7 F4/80 (clone BM8.1; Tonbo), Ghost Red 780 viability dye (Tonbo). Surface staining: BV650 CXCR5 (clone L138D7; BioLegend), Brilliant Violet 510 CD44 (clone IM7; BioLegend), redFluo 710 CD44 (clone IM7; Tonbo), Brilliant Violet 711 CD8 (clone 53-6.7; BioLegend), Brilliant Ultra Violet 395 Thy1.2 (clone 53-2.1; BD Biosciences)—used as an alternative to CD3 for gating T cells, Brilliant Ultra Violet 496 CD4 (clone GK1.5; BD Biosciences), Alexa Fluor 647 CD49d (clone R1-2; BD Biosciences), FITC CD11a (clone M17/4; eBioscience), PE-Cy7 CD11a (clone M17/4; eBioscience). Intracellular staining: Alexa Fluor 488 Foxp3 (clone FJK-15S; Invitrogen), PE-Cy7 Tbet (clone 4B10; BioLegend), PE Bcl6 (clone K112-91; BD Biosciences), BV650 IFN- γ (clone XMG1.2; BD Biosciences), APC IFN- γ (clone XMG1.2; eBioscience), PE-Cy7 IL-2 (clone JES6-5H4; BioLegend), APC TNF- α (clone MP6-XT22; BioLegend), PE TNF- α (clone MP6-XT22; BioLegend), PE-Cy7 IL-2 (clone JES6-5H4; BioLegend). Gating and fluorescence thresholds were determined using fluorescence minus one (FMO) controls.

Statistical Analyses

Data shown are presented as mean values \pm SEM. GraphPad Prism 8 was used for statistical analysis, where statistical significance was determined using two-tailed Student *t*-test (for 2 individual groups, if unequal variance Mann-Whitney *U*-test was used) or group-wise, one-way ANOVA analyses followed by multiple-testing correction using the Holm-Sidak method, with $\alpha = 0.05$. **p* < 0.05, ***p* < 0.01, ****p* < 0.005, and *****p* < 0.001.

RESULTS

The Number of Pre-existing Memory CD4 T Cells Fluctuate After Sepsis

Septic patients have reduced delayed-type hypersensitivity (DTH) responses, marked by a failure to respond to skin testing with Ag to which previous exposure is known to have occurred (35–37). DTH responses are driven in large part by

memory CD4 T cells—even though other immune cells such as CD8 T cells and antigen presenting cells (APCs) participate in the response—and DTH can be used as an assessment of overall immune system fitness (38). To more directly and rigorously interrogate the long-term consequences of sepsis on memory CD4 T cells, we used a protocol where an endogenous, Ag-specific memory CD4 T cell population was generated by infection with attenuated *Listeria monocytogenes* engineered to express the I-A^b-restricted peptide 2W1S (Lm-2W1S) 30 days before performing sham/CLP surgery (Figure 1A). We also employed a peptide:MHC II (I-A^b) tetramer-based approach to identify the endogenous 2W1S-specific CD4 T cells before and after sham/CLP surgery. Initially, spleens were harvested from naïve mice and mice at 7, 14, and 28 days post-infection to document the expansion, contraction, and establishment of memory 2W1S-specific CD4 T cells (Figure 1B). The majority of memory 2W1S-specific CD4 T cells adopted a Th1 (Tbet⁺) phenotype (Figure 1C), but some cells upregulated Foxp3 suggesting their differentiation into regulatory T cells (Figure 1D).

Sham or CLP surgery was performed on the remaining mice 30 days post-infection, and the number of total and 2W1S-specific CD4 T cells in the spleen were determined 2, 7, 14, and 28 days post-surgery by flow cytometry (Figure 2A). Our version of the CLP model results in ~20% mortality within the first 4 days after surgery (Figure 2B). Despite this low overall mortality, the mice that underwent CLP show dramatic reductions in number of total CD4 T cells and 2W1S-specific memory CD4 T cells at 2 days post-surgery that gradually recovered by day 30 (Figures 2C,D), which is consistent with our previous data (39–42). Interestingly, the numerical recovery of the Foxp3⁺ 2W1S-specific memory CD4 T cells occurred by day 7 post-CLP, while it took longer for the number of Tbet⁺ 2W1S-specific memory CD4 T cells to return to sham levels (Figures 2E,F). Collectively, these data show pre-existing memory CD4 T cells experience a transient reduction in number during CLP-induced sepsis.

Loss and Recovery of Ag-Experienced Memory CD4 T Cells in Septic “Dirty” Mice

Most preclinical sepsis research done to date has used specific pathogen-free (SPF) mice, which possess an immune system equivalent to that of neonatal humans (23). The vaccinations and infections experienced over a lifetime shape the immune system so rapid and protective functional responses can occur during new microbial encounters. Recently, we investigated the effect of sepsis on standard SPF B6 mice cohoused for 60 days with microbially-experienced “dirty” pet store mice (24). Cohousing laboratory SPF mice with pet store mice permits physiological pathogen transfer and matures the murine immune system to more closely resemble that seen in adult humans (23). To determine the effect of sepsis on multiple memory CD4 T cell populations generated following environmental pathogen/commensal exposure, we performed sham or CLP surgery on cohoused B6 mice age-matched to their SPF counterparts (Figure 3A). Cohousing increases the frequency of circulating memory CD44^{hi} CD4 T cells (compared

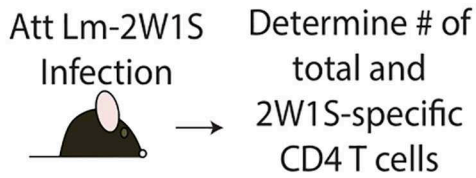
to age-matched SPF mice; Figure 3B), and the number of total CD4 T cells and CD44^{hi} memory CD4 T cells dramatically decline 2 days after CLP surgery (Figures 3C,D). We extended this analysis of the memory CD4 T cell compartment using a second, more-stringent phenotyping to identify true “Ag-experienced” memory CD4 T cells based on the upregulation of CD11a and CD49d (43). The cohoused mice showed a significant reduction in number of Ag-experienced (CD11⁺CD49d⁺) and naïve (CD11a⁻CD49d⁻) CD4 T cells in the spleen 2 days after CLP that returned to sham levels by day 30 (Figures 3B–E), indicating entire CD4 T cell compartment is susceptible to sepsis-induced numerical reduction. Thus, the data in Figures 2, 3 collectively show memory CD4 cells initially elicited by infection undergo a significant, but transient, numerical reduction in secondary lymphoid organs following CLP-induced sepsis.

Recall Response to Cognate Ag by Pre-existing Memory CD4 T Cells Is Reduced After Sepsis

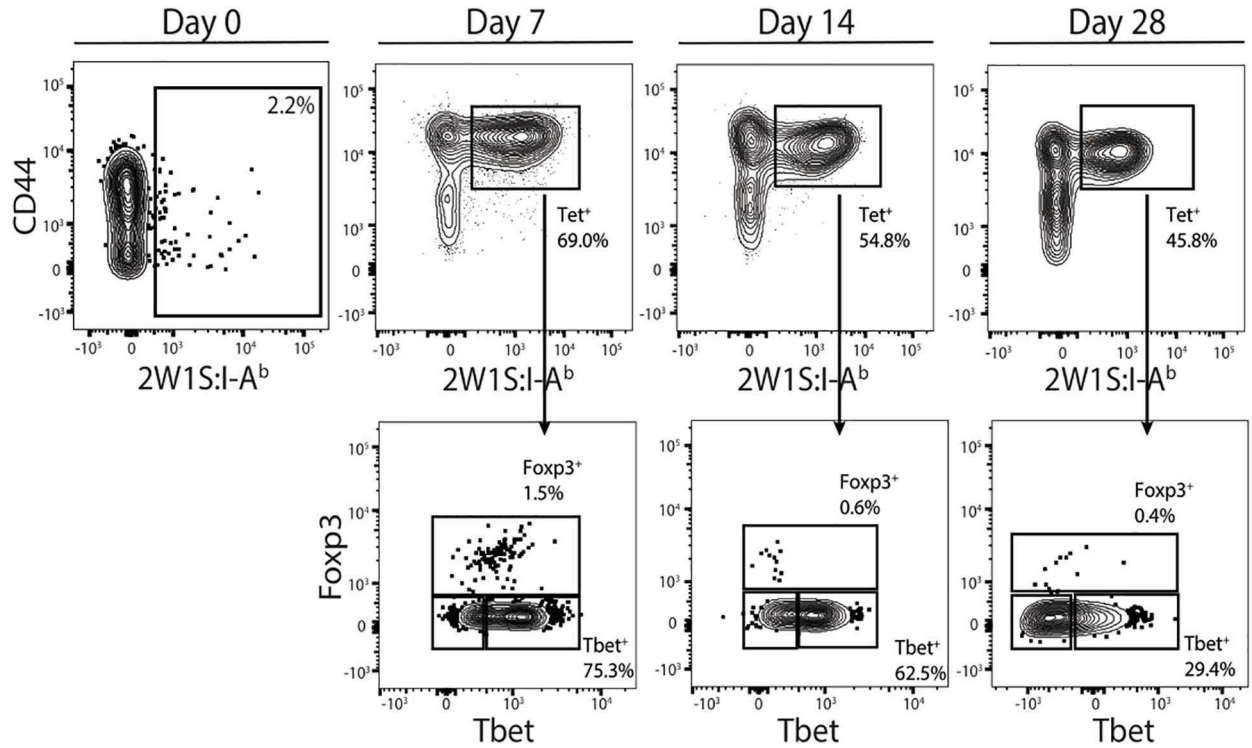
Data in Figure 2 show 2W1S-specific memory CD4 T cells numerically recover by day 30 post-sepsis. This result would suggest this population of Ag-specific memory CD4 T cells has returned to normal. However, the ability of pre-existing memory CD4 T cells to proliferate, accumulate, and exert effector functions after a second encounter with cognate Ag in the post-septic host has not been rigorously defined. Thus, we first examined the ability of this population of Ag-specific CD4 T cells to proliferate in response to cognate Ag recognition during secondary pathogen encounter. To do this, B6 mice were immunized with attenuated Lm-2W1S 30 days before sham or CLP surgery. The mice were then infected a second time with attenuated Lm-2W1S on day 2 or 30 after surgery. Total numbers of 2W1S-specific CD4 T cells in the spleen were determined before and after the second Lm-2W1S infection (Figure 4A). When infected on day 2 post-surgery, the 2W1S-specific CD4 T cells had significantly reduced proliferative capacity compared to sham-treated mice (Figure 4B). Specifically, the number of 2W1S-specific CD4 T cells in the sham-treated mice expanded 44-fold during the 7 days after secondary infection, but only 6-fold in the CLP-treated mice. However, when challenged on day 30 post-surgery, the proliferative capacity of the 2W1S-specific memory CD4 T cells in CLP-treated mice had nearly recovered to what was found in sham mice (Figure 4C). These data indicate the ability of Ag-specific memory CD4 T cells to proliferate during a recall response to cognate Ag (such as during a secondary infection) is only transiently reduced following sepsis.

To examine the effector function of the 2W1S-specific memory CD4 T cells at 2 and 30 days post-surgery, we used *in vivo* peptide restimulation where the Lm-2W1S-immune mice were injected i.v. with 2W1S peptide (27, 31–34). This technique permits the evaluation of cytokine production by Ag-specific (tetramer⁺) CD4 T cells with almost no background staining. Spleens were harvested 4 h after 2W1S peptide injection and processed for flow cytometry to determine the frequency and number of cytokine-producing 2W1S-specific memory CD4 T

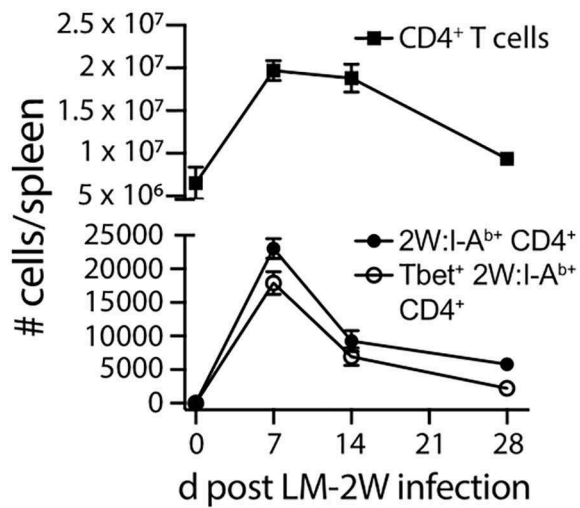
A



B



C



D

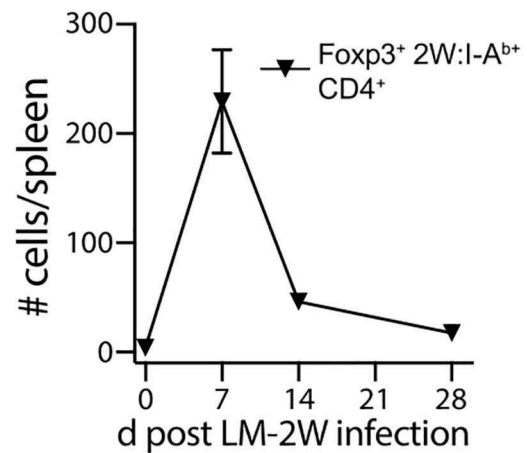
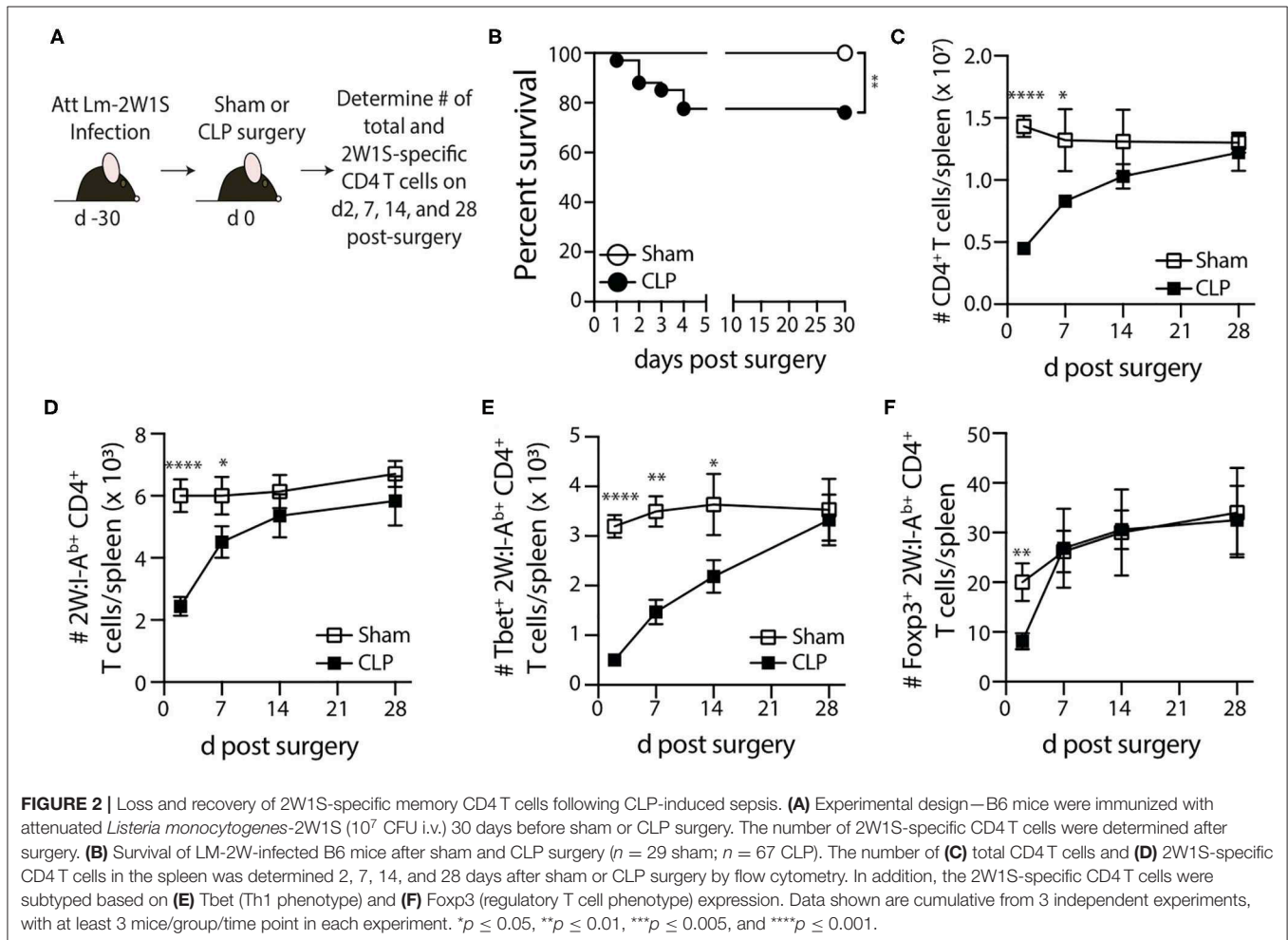


FIGURE 1 | Generation of Ag-specific memory CD4T cells following attenuated *Listeria monocytogenes*-2W1S infection. **(A)** Experimental design—B6 mice were immunized with attenuated *Listeria monocytogenes*-2W1S (10⁷ CFU i.v.). The number of 2W1S-specific CD4T cells were determined before and after infection.

(Continued)

FIGURE 1 | (B) Representative flow plots show the gating strategy used to identify 2W1S:I-A^b cells first identified as being CD3⁺ and CD4⁺. From the tetramer⁺ gate, cells expressing the transcription factors Tbet (Th1 phenotype) or Foxp3 (regulatory T cell phenotype) were then identified. Positive and negative gating determined using FMO controls. The number of **(C)** total CD4 T cells, 2W1S-specific CD4 T cells, Tbet⁺ 2W1S-specific CD4 T cells, and **(D)** Foxp3⁺ 2W1S-specific CD4 T cells in the spleen was determined 7, 14, and 28 days after attenuated LM-2W1S infection. Data shown are representative from 3 independent experiments, with at least 3 mice/group/time point in each experiment.



cells. Lm infection primarily generates a Th1 response (44), therefore we identified the 2W1S-specific CD4 T cells making IFN γ , TNF, and IL-2 (**Figures 5A,B**). It is important to note the gating strategy employed permits the identification and analysis of bona fide memory CD4 T cells using 2W1S:I-A^b tetramers that helps us determine the “per cell” capacity of those cells to produce cytokines. Similar to what was observed with the reduction in proliferative capacity seen 2 days post-CLP-induced sepsis, the frequency and number of single or multi-cytokine producing 2W1S-specific memory CD4 T cells (IFN γ ⁺-, IFN γ ⁺TNF⁺-, and IFN γ ⁺TNF⁺IL-2⁺) was significantly reduced at 2 days post-surgery (**Figures 5C,D**) and remained reduced 30 days after CLP. Interestingly, when we looked at the 2W1S-specific memory CD4 T cells only making IL-2 30 days after CLP surgery, the frequency and number of IL-2⁺ 2W1S-specific memory CD4 T cells was similar to that seen in sham-treated mice (**Figures 5E,F**).

This data is consistent with that in **Figure 4**, where we saw a restoration in proliferative capacity at day 30 post-CLP. Together, these data indicate prolonged impairment in the ability of the 2W1S-specific memory CD4 T cells to produce cytokines critical for pathogen clearing immunity when re-stimulated in an Ag-specific manner, despite recovery of cell numbers, and proliferative capacity (by day 30).

Sepsis Impairs Memory CD4 T Cell-Mediated Immunity to Infection

Our data show 2W1S-specific memory CD4 T cells numerically recover by 30 days after CLP surgery, but their ability to produce effector cytokines after re-stimulation remains blunted, suggesting a potential lesion in protective capacity following re-infection. To test this, we wanted to challenge post-septic mice with a virulent pathogen. Our experiments thus far have

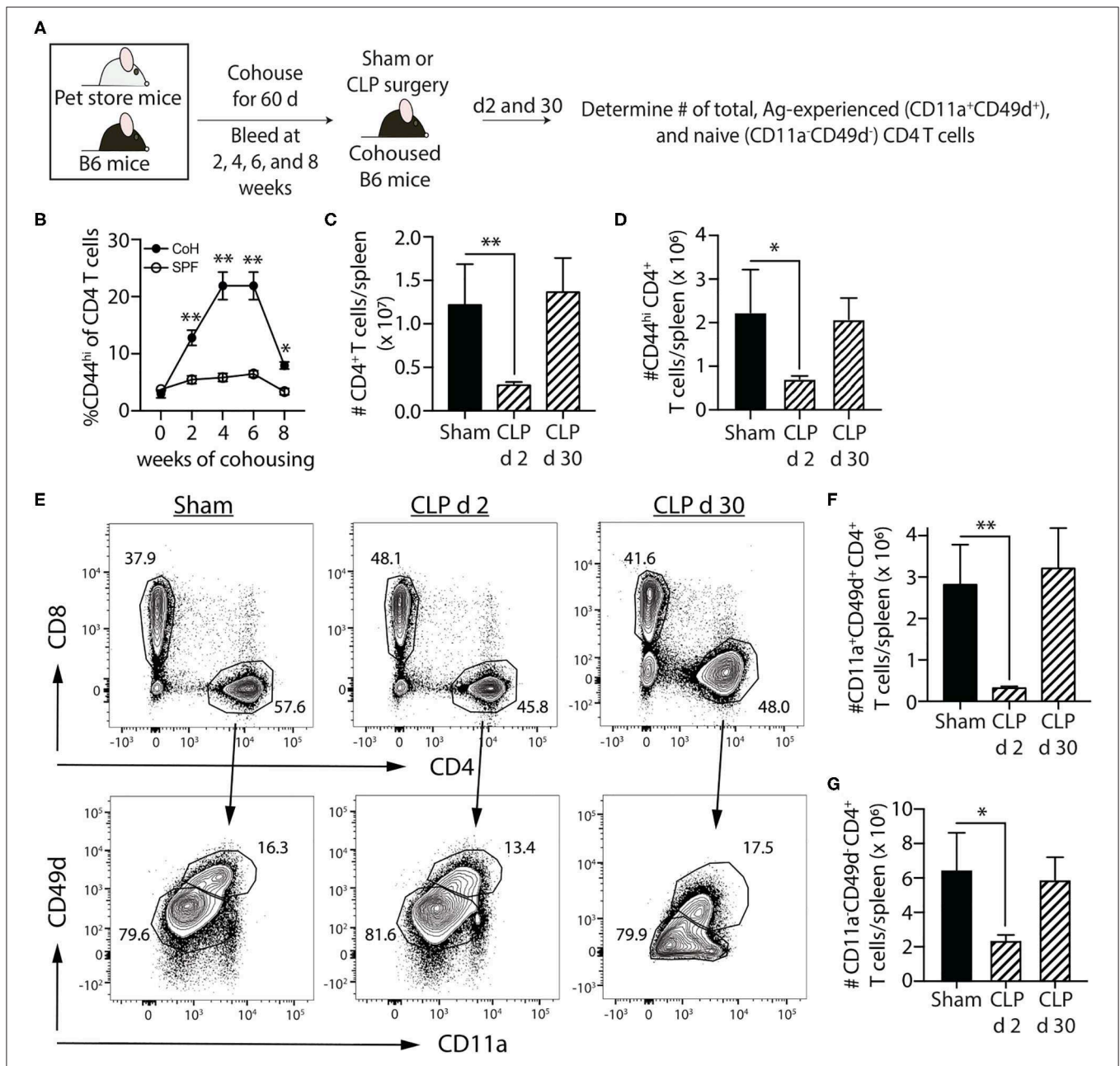


FIGURE 3 | Sepsis induces transient loss in number of pre-existing “Ag-experienced” CD4 T cells in microbially-experienced “dirty” mice. **(A)** Experimental design—SPF B6 mice were cohoused with pet store mice for 60 days to permit microbe transfer and immune system maturation. **(B)** Age-matched SPF and cohoused (CoH) mice were bled prior to and at 2, 4, 6, and 8 weeks after cohousing to determine the frequency of CD44^{hi} CD4 T cells. **(C–G)** Sham or CLP surgery was performed on cohoused B6 mice. The number of total, CD44^{hi}, CD11a⁺CD49d⁺ “Ag-experienced,” and CD11a⁻CD49d⁻ naive CD4 T cells in the spleen was determined 2 and 30 days post-surgery by flow cytometry. **(E)** Representative flow plots show gating strategy. Positive and negative gating determined using FMO controls. The number of **(C)** total, **(D)** CD11a⁺CD49d⁺, and **(E)** CD11a⁻CD49d⁻ CD4 T cells was determined. Data shown are representative of 2 independent experiments, with at least 4 mice/group in each experiment. * $p \leq 0.05$ and ** $p \leq 0.01$.

used attenuated Lm-2W1S to generate a trackable population of endogenous memory Ag-specific CD4 T cells; however, no virulent form of Lm-2W1S exists. Therefore, in the following experiments we employed two different murine models of infection using virulent bacterial strains. It is important to note that while the bacteria strains selected are pathogens not typically

found in human septic patients, their use as experimental pathogens is well-established and modification to express known I-A^b-restricted epitopes allow us to examine distinct, Ag-specific CD4 T cell responses after CLP. In the first model, we generated 2W1S-specific memory CD4 T cells by infecting mice with attenuated *Salmonella enterica* engineered to express the 2W1S

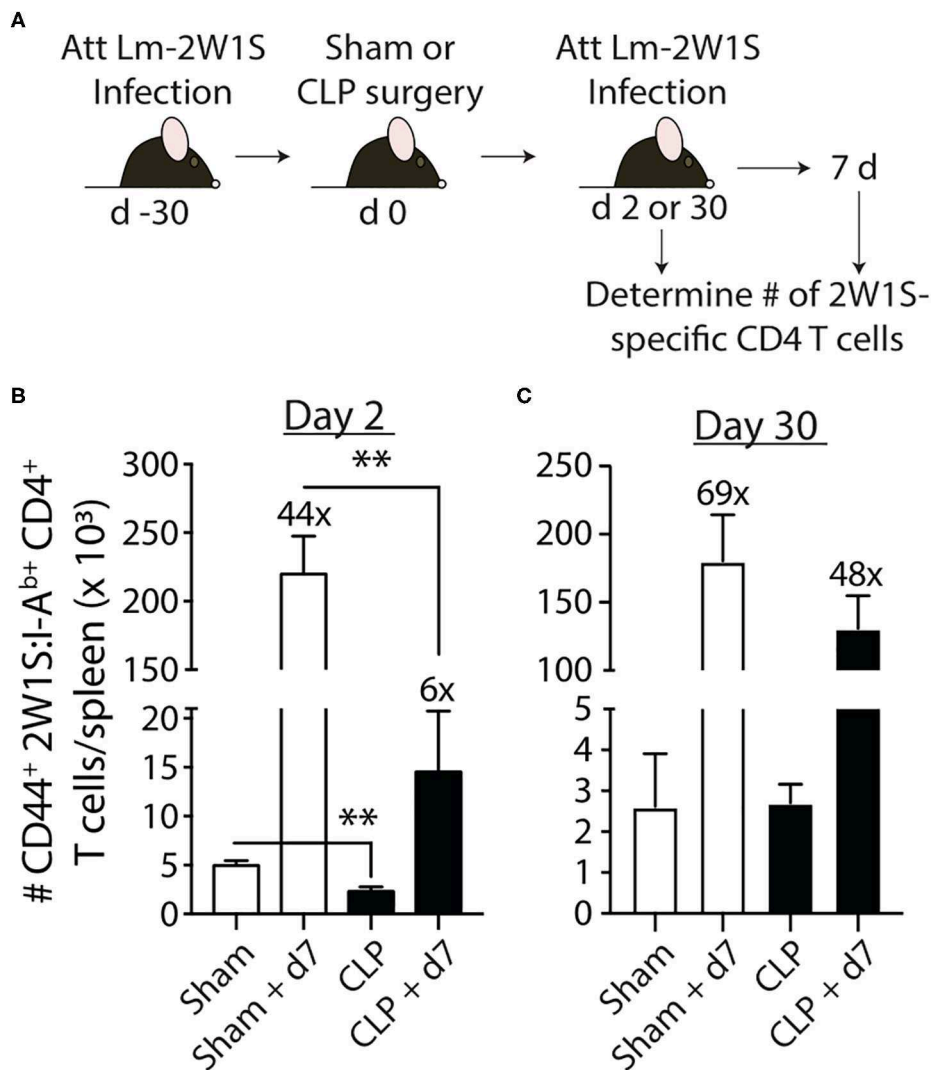


FIGURE 4 | Sepsis impairs the recall response by pre-existing 2W1S-specific memory CD4 T cells to cognate Ag. **(A)** Experimental design—B6 mice were immunized with attenuated *L. monocytogenes*-2W1S (10^7 CFU i.v.) 30 days before sham or CLP surgery. The mice were given a second infection with attenuated *L. monocytogenes*-2W1S (10^7 CFU i.v.) **(B)** 2 or **(C)** 30 days after surgery. Total number of 2W1S-specific CD4 T cells in the spleen was determined the day of and 7 days after the second LM-2W1S infection (10^7 CFU i.v.). The fold increase in cell numbers at day 7 post-secondary infection is indicated. Data shown are representative of 2 independent experiments, with 4 mice/group in each experiment. $**p \leq 0.01$.

epitope (*Se*-2W). *Salmonella*-2W1S infection stimulates a robust Ag-specific CD4 T cell response (33, 45) because the bacteria replicate in the phagosomes of dendritic cells and macrophages—the location of peptide:MHC II complex formation (28, 46–49). Moreover, mice immunized with *Salmonella*-2W1S demonstrate protective immunity to a secondary infection with virulent *Salmonella* (45). To confirm the importance of *Salmonella*-specific memory CD4 T cells in the protection to virulent *Salmonella* infection, some of the *Se*-2W-infected mice were depleted of CD4 T cells (using the anti-CD4 mAb GK1.5) prior to a second infection of virulent *Se*-2W (**Figure 6A**). CD4 T cell-replete mice infected with attenuated *Se*-2W had significantly lower pathogen burdens after secondary virulent *Se*-2W infection

compared to the CD4 T cell-depleted mice (**Figure 6B**), and had pathogen burdens comparable to that seen in naïve mice only infected with virulent *Se*-2W. We then performed sham or CLP surgery on a separate cohort of mice infected with attenuated *Se*-2W 30 days prior to surgery. On days 2 or 30 after surgery, all groups were infected with virulent *Se*-2W. Splenic bacterial titers were determined 7 days after virulent *Se*-2W infection, revealing higher burdens in the CLP-treated mice regardless of early or late secondary challenge (**Figures 6C,D**).

In the second model, naïve mice were infected with attenuated Lm engineered to express OVA (Lm-OVA) to elicit OVA₃₂₃-specific memory CD4 T cells (50). We tested the ability of the OVA₃₂₃-specific memory CD4 T cells to provide protection

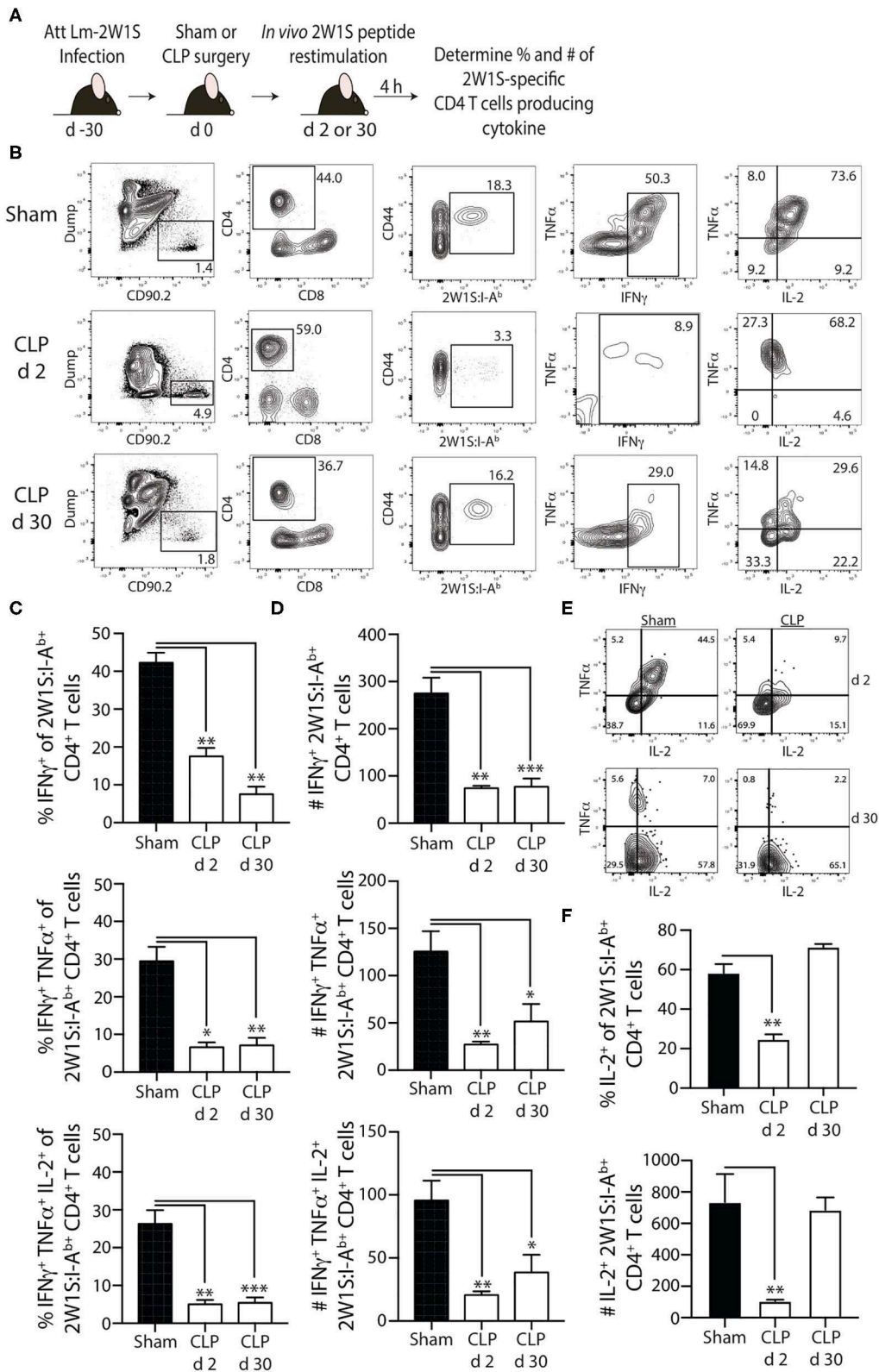


FIGURE 5 | Sepsis impairs the ability of 2W1S-specific memory CD4T cells to produce effector cytokines after *in vivo* cognate Ag restimulation. **(A)** Experimental design—B6 mice were immunized with attenuated *L. monocytogenes*-2W1S (10^7 CFU i.v.) 30 days before sham or CLP surgery. Mice were injected with 2W1S (Continued)

FIGURE 5 | peptide (100 μg i.v.) 2 or 30 days after surgery to restimulate the 2W1S-specific memory CD4 T cells. Spleens were harvested 4 h later, and the frequency and number of $\text{IFN}\gamma^+$, $\text{IFN}\gamma^+\text{TNF}\alpha^+$, and $\text{IFN}\gamma^+\text{TNF}\alpha^+\text{IL-2}^+$ 2W1S-specific CD4 T cells was determined by flow cytometry. **(B)** Representative flow plots of intracellular $\text{IFN}\gamma$, $\text{TNF}\alpha$, and IL-2 detection in $\text{CD44}^{\text{hi}}2\text{W1S:I-A}^{\text{b}+}$ CD4 T cells after *in vivo* peptide restimulation. Plots show cells gated from 2W1S:I-A^b-enriched CD4 T cells from sham- or CLP-treated mice. Positive and negative gating determined using FMO controls. Frequency **(C)** and number **(D)** of $\text{CD44}^{\text{hi}}2\text{W1S:I-A}^{\text{b}+}$ -specific CD4 T cells in the spleen producing $\text{IFN}\gamma$, $\text{IFN}\gamma/\text{TNF}\alpha$, and $\text{IFN}\gamma/\text{TNF}\alpha/\text{IL-2}$. **(E)** Representative flow plots of intracellular IL-2 detection in $\text{CD44}^{\text{hi}}2\text{W1S:I-A}^{\text{b}+}$ CD4 T cells after *in vivo* peptide restimulation. Plots show cells gated from 2W1S:I-A^b-enriched CD4 T cells from sham- or CLP-treated mice. Positive and negative gating determined using FMO controls. **(F)** Frequency and number of $\text{CD44}^{\text{hi}}2\text{W1S:I-A}^{\text{b}+}$ -specific CD4 T cells in the spleen producing IL-2. Data shown are representative of 2 independent experiments, with at least 4 mice/group in each experiment. * $p \leq 0.05$, ** $p \leq 0.01$, and *** $p \leq 0.005$.

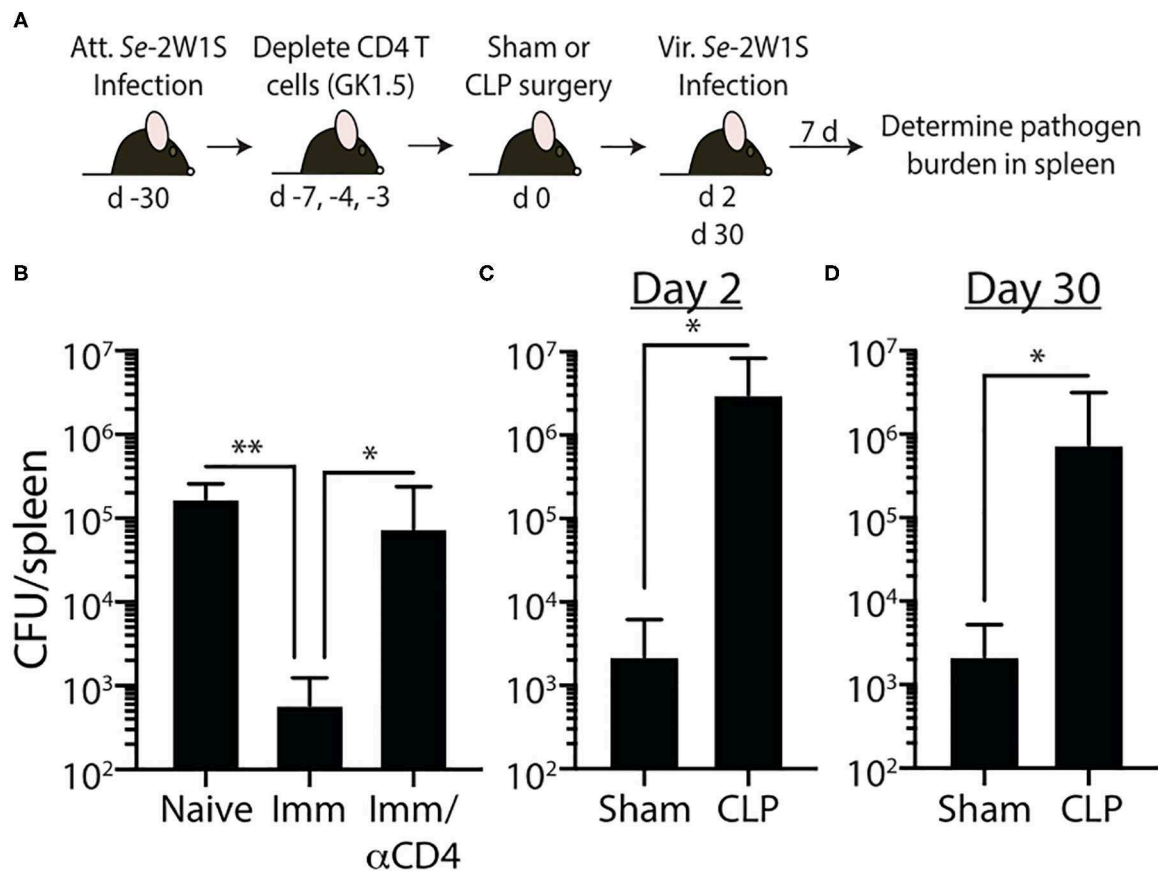


FIGURE 6 | Impaired 2W1S-specific memory CD4 T cell-mediated immunity to secondary *Salmonella*-2W1S infection after CLP-induced sepsis. **(A)** Experimental design—B6 mice were immunized with attenuated *Salmonella enterica* strain BRD509-2W1S (Se-2W1S; AroA^- ; 10^6 CFU i.v.) 30 d before sham or CLP surgery. **(B)** One group of mice (Imm/ αCD4) was depleted of CD4 T cells by injecting anti-CD4 mAb GK1.5 i.v. (800 μg on day -7, and 400 μg on days -4 and -3) before second infection with virulent *Salmonella*-2W1S (10^3 CFU i.v.). Bacterial titers in the spleen were determined 7 days later. **(C–D)** In separate cohorts of attenuated Se-2W1S infected mice, sham or CLP surgery was performed. These mice were then challenged with virulent Se-2W1S (10^3 CFU i.v.) **(C)** 2 or **(D)** 30 days after surgery. Bacterial titers in the spleen were determined 7 days later. Data shown are representative of 3 independent experiments, with at least 5 mice/group in each experiment. * $p \leq 0.05$, ** $p \leq 0.01$.

against a secondary Lm-OVA infection after sepsis induction. The adaptive immune system does not confer protection against primary Lm infections after CLP (51). CD8 T cells play prominent roles in controlling and eradicating secondary infections by intracellular pathogens that mainly localize to the cytosol of the infected cell, such as *L. monocytogenes* (52), due to the efficient production of peptide:MHC I complexes by the infected cell. However, Lm-specific CD4 T cells can provide sufficient protection to infection even in the absence

of CD8 T cells (53–55). Thus, to focus on the memory CD4 T cell-mediated clearance of Lm-OVA, CD8 T cells were depleted using anti-CD8 mAb (clone 2.43) prior to performing sham of CLP surgery (Figures 7A,B). Two days later the mice were infected with virulent Lm-OVA, after which pathogen burden in the liver and spleen was determined. A separate group of naïve, CD8-depleted mice were infected with virulent Lm-OVA for reference. As expected, we saw substantially reduced Lm-OVA burden in both the liver and spleen compared to infected naïve

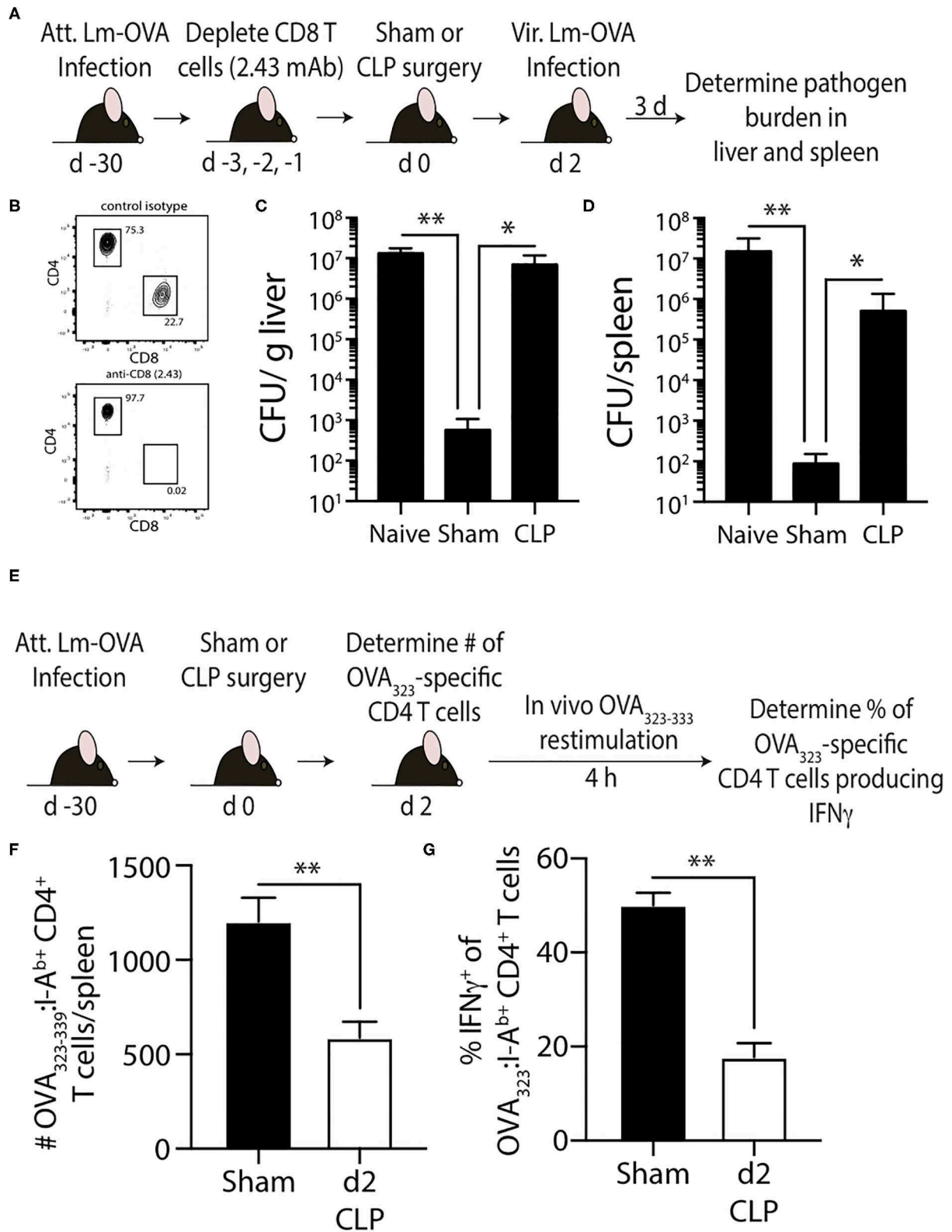


FIGURE 7 | Effect of sepsis on OVA₃₂₃₋₃₃₉-specific memory CD4 T cells. **(A)** Experimental design—B6 mice were infected with attenuated *L. monocytogenes*-OVA (LM-OVA; 10⁷ CFU i.v.) 30 d before sham or CLP surgery. Mice in the naïve, sham, and CLP groups were depleted of CD8 T cells by injecting 100 μ g anti-CD8 mAb (Continued)

FIGURE 7 | (clone 2.43) i.v. 3, 2, and 1 days prior to surgery. **(B)** A small amount of blood was collected from the anti-CD8 mAb-treated mice on the day of surgery and staining for CD4 and CD8 T cells. Representative flow plots show the extent of CD8 T cell depletion compared to a reference mouse injected with a control isotype mAb. **(C,D)** The mice were infected with virulent LM-OVA (10^4 CFU i.v.) 2 days after surgery. Bacterial titers in the liver and spleen were determined 3 days post-vir LM-OVA infection. Data shown are representative of 2 independent experiments, with at least 5 mice/group in each experiment. $*p \leq 0.05$ and $**p < 0.01$. **(E)** Experimental design—B6 mice were infected with attenuated *L. monocytogenes*-OVA (LM-OVA; 10^7 CFU i.v.) 30 d before sham or CLP surgery. **(F)** On day 2 post-surgery, the number of OVA_{323–339}-specific memory CD4 T cells in the spleen were determined. **(G)** A separate cohort of mice were injected with OVA_{323–339} peptide (100 μ g i.v.) 2 days after surgery to restimulate the OVA_{323–339}-specific memory CD4 T cells. Spleens were harvested 4 h later, and the frequency of IFN γ ⁺ OVA_{323–339}-specific CD4 T cells was determined by flow cytometry. Data shown are representative of 2 independent experiments, with at least 5 mice/group in each experiment. $**p < 0.01$.

mice (**Figures 7C,D**). In contrast, the Lm-OVA burdens were dramatically higher in the CLP-treated mice compared to sham mice. To better understand the cause for this reduced protection, we examined the impact of sepsis on the number and function of the OVA₃₂₃-specific memory CD4 T cells (**Figure 7E**). Just as seen with the 2W1S-specific memory CD4 T cells, CLP-induced sepsis led to a significant reduction in OVA₃₂₃-specific memory CD4 T cell numbers and ability to produce IFN γ after *in vivo* restimulation (**Figures 7E,G**). Together, the data in **Figures 5, 6** show the sepsis-induced long-lasting changes in Ag-specific memory CD4 T cell pools that ultimately impact the ability of the host to properly respond to pathogen re-infection.

DISCUSSION

Sepsis causes millions of deaths annually (1, 56, 57), and the incidence of sepsis has increased dramatically in recent decades. Understanding the cellular mechanisms that contribute to sepsis-induced immunosuppression is critical for developing effective therapies and improving the survival and quality of life for septic patients. CD4 T cells have the unique flexibility of functioning in an array of immunological settings due to their ability to differentiate into a variety of phenotypic subsets based on the inflammatory milieu produced at the time of primary Ag encounter (58, 59). Clinical data show considerable reduction in number of circulating CD4 T cells (along with other lymphocyte populations) in sepsis patients of all ages (13, 60–62) and at the time of high pathogen burden (63, 64). Moreover, reports of decreased effector CD4 T cell function in critically ill sepsis patients date back to the 1970's with data showing impaired DTH reactions (35). These observations and the fact that DTH is mediated in large part by CD4 T cells (65) bring into question to what extent memory CD4 T cells are numerically and functionally affected by sepsis. However, most (if not all) of the previous studies examined the effect of sepsis on the CD4 T cell compartment in sum, which has the potential to mask some of the unique characteristics of individual Ag-specific populations (34). In contrast to these previous publications, the present study took advantage of pathogens engineered to express defined CD4 T cell epitopes to stimulate the generation of bona fide memory CD4 T cells and reagents to identify and quantitatively and qualitatively evaluate endogenous Ag-specific memory CD4 T cells that have experienced a septic event. As a complement to the experiments using conventional laboratory mice infected with a known experimental pathogen to generate Ag-specific memory CD4 T cells, our “dirty” mouse model allowed us to

investigate how multiple populations of memory CD4 T cells are affected during sepsis in an animal with a more adult human-like immune system (23, 24, 66). Together, the experimental model systems used provided a unique means by which sepsis-induced immunoparalysis of memory CD4 T cells was evaluated.

One area of sepsis research that has received considerable attention recently deals with the idea that sepsis may differentially affect naïve and memory T cells. Indeed, there is data to suggest memory CD8 T cells are more resistant to radiation-induced apoptosis than naïve cells (67). Cellular apoptotic mechanisms induced by extrinsic (i.e., death receptor) and intrinsic (i.e., mitochondrial) pathways have been suggested to be major contributors to the numerical reduction in total CD4 and CD8 T cells following sepsis (68), but the definitive molecule responsible for initiating lymphocyte apoptosis during sepsis has yet to be identified. Regardless of the mechanism by which sepsis-induced lymphopenia occurs, studies from a number of laboratories using proven experimental infection models for eliciting Ag-specific memory T cells indicate circulating Ag-experienced memory CD8 T cells are equally susceptible to sepsis-induced attrition as naïve CD8 T cells (26, 69–71). In addition, the circulating memory CD8 T cells exhibit profound impairment in effector functionality (e.g., decreased Ag sensitivity, proliferative capacity, cytokine production, and inability to clear secondary infections) following a septic event (72). The numerical and functional decrease in circulating memory CD8 T cells is not, interestingly, reciprocated in tissue-resident memory CD8 T cells after a moderate sepsis insult that leads to <10% mortality (71). The number of tissue-resident memory CD8 T cells is maintained after sepsis, as well as their ability to produce effector cytokine after re-stimulation. In contrast to the aforementioned similar attrition of naïve and memory CD8 T cells after sepsis, it was recently suggested by Xie et al. that CD44^{hi} CD8 T cells in “memory mice” (generated via *Listeria* and LCMV infection) exhibited significant attrition after CLP while this was not the case for naïve CD44^{lo} CD8 T cells (73). It was surprising to see that CLP sepsis did not lead to a reduction in CD44^{lo} CD8 T cells, as such a reduction has been noted in other papers (14, 39, 40, 74–77). Moreover, these authors examined the bulk CD8 T cell compartment, even though peptide:MHC I tetramers were available to identify LCMV-specific CD8 T cells. The authors also detected increased expression of CD25, PD-1, and 2B4 on the memory CD8 T cells, but did not perform any studies to directly determine if and/or how these proteins may be altering T cell sensitivity to sepsis-induced attention. Needless to say, additional data

is needed to conclusively determine the extent of naïve and memory CD8 T cells sensitivity to CLP-induced apoptosis and the potential role played by intrinsic factors (e.g., CD25, PD-1, 2B4, and other proteins) in regulating this sensitivity.

Fewer studies have examined the effect of sepsis on Ag-experienced memory CD4 T cells compared to what has been done for memory CD8 T cells, driving our interest in the current set of experiments. Contrary to the increased susceptibility of memory CD44^{hi} CD8 T cells (vs. naïve CD44^{lo} CD8 T cells) to sepsis-induced apoptosis suggested by Xie et al. (73), data presented by these authors suggested CD44^{hi} CD4 T cells were not more sensitive to attrition during sepsis compared to CD44^{lo} CD4 T cells. As with their CD8 T cell data, the CD4 T cells were examined at the bulk (non-Ag-specific) level. Some of the data presented herein are consistent with the data by Xie et al., but there are some important differences in our study that are worth noting. First, our data show CLP-induced sepsis results in a transient numerical reduction of 2W1S-specific memory CD4 T cells (current study), while 2W1S-specific naïve CD4 T cells suffer from prolonged numerical reduction (34). Second, while the numerical reduction was transient, the inability of the 2W1S-specific memory CD4 T cells to produce cytokines upon peptide restimulation was evident out to day 30 post-CLP, similar to what was observed in naïve cells (34). Cytokine “help” from CD4 T cells is a hallmark of this population of immune cells, and the prolonged dysfunction in cytokine production may contribute the generalized immunoparalysis seen during sepsis. Furthermore, the *in vivo* peptide restimulation assay used is a more physiological way of activating the desired Ag-specific population via MHC II presentation of peptide Ag (31–34). Third, despite their reduced ability to produce cytokines at day 30-post-sepsis, 2W1S-specific memory CD4 T cells were surprisingly able to expand upon Ag re-encounter 30 days after CLP to nearly sham levels. It is important to note that the accumulation/expansion of Ag-specific effector CD4 T cells upon Ag re-encounter is dependent on the rate of proliferation (leading to an increase in cell accumulation) and rate of death (decrease in accumulation). We did not measure either of these parameters; however, impairment is clearly seen in day 2 septic mice undergoing secondary challenge since the fold-expansion in numbers from pre-challenge level was significantly diminished (6x compared to 44x—see **Figure 4**). It is reasonable to suggest that the reduction in accumulation of memory CD4 T cells following a second encounter with cognate Ag to be due to decreased per-cell proliferation, increased death, or both. Together, our data show the 2W1S-specific memory population is similarly prone to the initial sepsis-induced depletion and prolonged inability to produce important inflammatory cytokines compared to their naïve counterparts. However, unlike naïve 2W1S-specific CD4 T cells, Ag-experienced memory 2W1S-specific CD4 T cells quickly recover numerically, as well as their ability to proliferate in response to a secondary infection. It remains to be determined how sepsis affects the number and function of tissue-resident memory CD4 T cells. Moreover, the different recovery rates between the memory and regulatory Foxp3⁺ CD4 T cell populations could suggest additional time-dependent

mechanisms that control the ability of sepsis survivors to respond to secondary infection. There have been a few reports specifically looking at the role of regulatory Foxp3⁺ CD4 T cells in sepsis (78–80), and while these data hint at the participation of this CD4 T cell subset in sepsis-induced immune suppression additional evaluation is needed to better define how regulatory CD4 T cells are maintained and function in the post-septic host.

Our data collectively show CLP-induced sepsis results in a transient numerical reduction and long-term functional deficits of Ag-specific memory CD4 T cells, which contributes to the characteristic long-lasting immunoparalysis seen after sepsis and reduced protection to secondary infection. Secondary infection after sepsis, acquired while in the hospital or after discharge, is a leading cause of sepsis mortality (81–84). Lungs, blood stream, surgical site/soft tissue, and urinary tract are the most sites of secondary infection in septic patients, with *Pseudomonas* spp., *Staphylococcus* spp., *Candida albicans*, *E. coli*, and *Enterococcus* spp. being common secondary infection microbes (85). We recognize that the experimental pathogens used in this study (to establish either the primary or secondary infection) are not the “typical” pathogens found in sepsis patients. We chose to use *Listeria* and *Salmonella* for the following reasons: (1) both are well-established model pathogens for examining the immune response to bacteria, where attenuated strains are available for generating memory T cells and virulent strains are available to assess the protective capacity of the memory T cells; (2) *Listeria* and *Salmonella* infection stimulates a robust Ag-specific CD4 T cell response because the bacteria replicate in the phagosomes of dendritic cells and macrophages—the location of peptide:MHC II complex formation; and (3) the recombinant *Listeria* and *Salmonella* strains express known I-A^b-restricted epitopes. Future studies could include engineering recombinant *P. aeruginosa*, *S. aureus*, and/or *S. pneumonia* to express the 2W1S (or some other) epitope that will enable testing of the 2W1S-specific memory CD4 T cell response in CLP-treated mice given a secondary infection with a clinically-relevant pathogen after recovery from the initial septic event. It is also important to note that while our study exclusively examined the *in vivo* function of memory CD4 T cells after sepsis, other publications have shown the environment is also a critical factor in sepsis-induced suppression of T cells (86). Following sepsis, a number of CD4 T cell extrinsic factors have been found to suppress the activity of CD4 T cells, including the reduced APC function and TNF signaling (79, 86). Sepsis also leads to dysfunction of the innate immune system, including impaired bacterial clearance by neutrophils, leading to increased susceptibility to *P. aeruginosa* and *S. aureus* (51, 87). Future studies could investigate the extent to which sepsis impairs innate immune responses, especially those related to trained innate immunity, in microbially-experienced mice containing a high frequency of Ag-experienced memory T cells.

In summary, our experiments have uncovered differences in recovery and function within the endogenous memory CD4 T cell compartment compared to what has been detected at the “bulk” CD4 T cell level. The data presented here

will serve as the foundation for a number of future studies examining the behavior of endogenous, Ag-experienced memory CD4T cells in the septic host, as well as methods of reversing the immunoparalysis typically observed within this population of immune cells vital to overall immune system fitness.

DATA AVAILABILITY STATEMENT

All datasets generated for this study are included in the article/supplementary material.

ETHICS STATEMENT

This animal study was reviewed and approved by University of Minnesota Institutional Animal Care and Use Committees.

REFERENCES

- Shankar-Hari M, Phillips GS, Levy ML, Seymour CW, Liu VX, Deutschman CS, et al. Developing a new definition and assessing new clinical criteria for septic shock: for the third international consensus definitions for sepsis and septic shock (Sepsis-3). *JAMA*. (2016) 315:775–87. doi: 10.1001/jama.2016.0289
- Brun-Buisson C, Doyon F, Carlet J, Dellamonica P, Gouin F, Lepoutre A, et al. Incidence, risk factors, and outcome of severe sepsis and septic shock in adults. A multicenter prospective study in intensive care units French ICU Group for Severe Sepsis. *JAMA*. (1995) 274:968–74. doi: 10.1001/jama.1995.03530120060042
- Levy MM, Fink MP, Marshall JC, Abraham E, Angus D, Cook D, et al. 2001 SCCM/ESICM/ACCP/ATS/SIS international sepsis definitions conference. *Intensive Care Med*. (2001) 29:530–8. doi: 10.1007/s00134-003-1662-x
- Hotchkiss RS, Nicholson DW. Apoptosis and caspases regulate death and inflammation in sepsis. *Nat Rev Immunol*. (2006) 6:813–22. doi: 10.1038/nri1943
- Rittirsch D, Flierl MA, Ward PA. Harmful molecular mechanisms in sepsis. *Nat Rev Immunol*. (2008) 8:776–87. doi: 10.1038/nri2402
- Hotchkiss RS, Monneret G, Payen D. Sepsis-induced immunosuppression: from cellular dysfunctions to immunotherapy. *Nat Rev Immunol*. (2013) 13:862–74. doi: 10.1038/nri3552
- Sasser SM, Varghese M, Joshipura M, Kellermann A. Preventing death and disability through the timely provision of prehospital trauma care. *Bull World Health Organ*. (2006) 84:507. doi: 10.2471/BLT.06.033605
- Probst C, Pape HC, Hildebrand F, Regel G, Mahlke L, Giannoudis P, et al. 30 years of polytrauma care: an analysis of the change in strategies and results of 4849 cases treated at a single institution. *Injury*. (2009) 40:77–83. doi: 10.1016/j.injury.2008.10.004
- Probst C, Zelle BA, Sittaro NA, Lohse R, Krettek C, Pape HC. Late death after multiple severe trauma: when does it occur and what are the causes? *J Trauma*. (2009) 66:1212–7. doi: 10.1097/TA.0b013e318197b97c
- Gentile LF, Cuenca AG, Efron PA, Ang D, Bihorac A, Mckinley BA, et al. Persistent inflammation and immunosuppression: a common syndrome and new horizon for surgical intensive care. *J Trauma Acute Care Surg*. (2012) 72:1491–501. doi: 10.1097/TA.0b013e318256e000
- Hotchkiss RS, Monneret G, Payen D. Immunosuppression in sepsis: a novel understanding of the disorder and a new therapeutic approach. *Lancet Infect Dis*. (2013) 13:260–8. doi: 10.1016/S1473-3099(13)70001-X
- Jensen IJ, Sjaastad FV, Griffith TS, Badovinac VP. Sepsis-induced T cell immunoparalysis: the ins and outs of impaired T cell immunity. *J Immunol*. (2018) 200:1543–53. doi: 10.4049/jimmunol.1701618
- Hotchkiss RS, Tinsley KW, Swanson PE, Schmiege RE Jr, Hui JJ, Chang KC, et al. Sepsis-induced apoptosis causes progressive profound depletion

AUTHOR CONTRIBUTIONS

FS, TK, TD, WS, CD, JC-P, KM, and TG performed experiments and analyzed data. VB and TG provided input on the research design. FS, VB, and TG wrote and edited the manuscript. All authors read and approved the submitted version.

FUNDING

This work was supported by National Institutes of Health grants R01GM115462 (TG), R01AIGM113961 (VB), R35GM134880 (VB), T32CA009138 (FS), T32AI007313 (FS and JC-P), T35AI118620 (CD), and a Veterans Administration Merit Review Award (I01BX001324; TG). This work was also supported in part by NIH P30 CA77598 utilizing the Masonic Cancer Center, University of Minnesota Flow Cytometry shared resource.

- of B and CD4+ T lymphocytes in humans. *J Immunol*. (2001) 166:6952–63. doi: 10.4049/jimmunol.166.11.6952
- Unsinger J, Kazama H, McDonough JS, Hotchkiss RS, Ferguson TA. Differential lymphopenia-induced homeostatic proliferation for CD4+ and CD8+ T cells following septic injury. *J Leukoc Biol*. (2009) 85:382–90. doi: 10.1189/jlb.0808491
- Pepper M, Jenkins MK. Origins of CD4(+) effector and central memory T cells. *Nat Immunol*. (2011) 12:467–71. doi: 10.1038/ni.2038
- Kaech SM, Wherry EJ, Ahmed R. Effector and memory T-cell differentiation: implications for vaccine development. *Nat Rev Immunol*. (2002) 2:251–62. doi: 10.1038/nri778
- Harty JT, Badovinac VP. Shaping and reshaping CD8+ T-cell memory. *Nat Rev Immunol*. (2008) 8:107–19. doi: 10.1038/nri2251
- Schenkel JM, Masopust D. Tissue-resident memory T cells. *Immunity*. (2014) 41:886–97. doi: 10.1016/j.immuni.2014.12.007
- Beura LK, Fares-Frederickson NJ, Steinert EM, Scott MC, Thompson EA, Fraser KA, et al. CD4(+) resident memory T cells dominate immunosurveillance and orchestrate local recall responses. *J Exp Med*. (2019) 216:1214–29. doi: 10.1084/jem.20181365
- Taylor JJ, Jenkins MK. CD4+ memory T cell survival. *Curr Opin Immunol*. (2011) 23:319–23. doi: 10.1016/j.coi.2011.03.010
- Condotta SA, Cabrera-Perez J, Badovinac VP, Griffith TS. T-cell-mediated immunity and the role of TRAIL in sepsis-induced immunosuppression. *Crit Rev Immunol*. (2013) 33:23–40. doi: 10.1615/CritRevImmunol.2013006721
- Cabrera-Perez J, Condotta SA, Badovinac VP, Griffith TS. Impact of sepsis on CD4T cell immunity. *J Leukoc Biol*. (2014) 96:767–77. doi: 10.1189/jlb.5MR0114-067R
- Beura LK, Hamilton SE, Bi K, Schenkel JM, Odumade OA, Casey KA, et al. Normalizing the environment recapitulates adult human immune traits in laboratory mice. *Nature*. (2016) 532:512–6. doi: 10.1038/nature17655
- Huggins MA, Sjaastad FV, Pierson M, Kucaba TA, Swanson W, Staley C, et al. Microbial exposure enhances immunity to pathogens recognized by TLR2 but increases susceptibility to cytokine storm through TLR4 sensitization. *Cell Rep*. (2019) 28:1729–43.e5. doi: 10.1016/j.celrep.2019.07.028
- Rittirsch D, Huber-Lang MS, Flierl MA, Ward PA. Immunodesign of experimental sepsis by cecal ligation and puncture. *Nat Protoc*. (2009) 4:31–6. doi: 10.1038/nprot.2008.214
- Duong S, Condotta SA, Rai D, Martin MD, Griffith TS, Badovinac VP. Polymicrobial sepsis alters antigen-dependent and -independent memory CD8T cell functions. *J Immunol*. (2014) 192:3618–25. doi: 10.4049/jimmunol.1303460
- Cabrera-Perez J, Babcock JC, Dileepan T, Murphy KA, Kucaba TA, Badovinac VP, et al. Gut microbial membership modulates CD4T cell reconstitution and function after sepsis. *J Immunol*. (2016) 197:1692–8. doi: 10.4049/jimmunol.1600940

28. Goldberg MF, Roeske EK, Ward LN, Pengo T, Dileepan T, Kotov DI, et al. Salmonella persist in activated macrophages in T cell-sparse granulomas but are contained by surrounding CXCR3 ligand-positioned Th1 cells. *Immunity*. (2018) 49:1090–102.e7. doi: 10.1016/j.immuni.2018.10.009
29. Moon JJ, Chu HH, Pepper M, Mcsorley SJ, Jameson SC, Kedl RM, et al. Naive CD4(+) T cell frequency varies for different epitopes and predicts repertoire diversity and response magnitude. *Immunity*. (2007) 27:203–13. doi: 10.1016/j.immuni.2007.07.007
30. Moon JJ, Chu HH, Hataye J, Pagan AJ, Pepper M, Mclachlan JB, et al. Tracking epitope-specific T cells. *Nat Protoc*. (2009) 4:565–81. doi: 10.1038/nprot.2009.9
31. Pepper M, Pagan AJ, Igyarto BZ, Taylor JJ, Jenkins MK. Opposing signals from the Bcl6 transcription factor and the interleukin-2 receptor generate T helper 1 central and effector memory cells. *Immunity*. (2011) 35:583–95. doi: 10.1016/j.immuni.2011.09.009
32. Pagan AJ, Pepper M, Chu HH, Green JM, Jenkins MK. CD28 promotes CD4+ T cell clonal expansion during infection independently of its YMNM and PYAP motifs. *J Immunol*. (2012) 189:2909–17. doi: 10.4049/jimmunol.1103231
33. Nelson RW, Mclachlan JB, Kurtz JR, Jenkins MK. CD4+ T cell persistence and function after infection are maintained by low-level peptide:MHC class II presentation. *J Immunol*. (2013) 190:2828–34. doi: 10.4049/jimmunol.1202183
34. Cabrera-Perez J, Condotta SA, James BR, Kashem SW, Brincks EL, Rai D, et al. Alterations in antigen-specific naive CD4T cell precursors after sepsis impairs their responsiveness to pathogen challenge. *J Immunol*. (2015) 194:1609–20. doi: 10.4049/jimmunol.1401711
35. Meakins JL, Pietsch JB, Bubenick O, Kelly R, Rode H, Gordon J, et al. Delayed hypersensitivity: indicator of acquired failure of host defenses in sepsis and trauma. *Ann Surg*. (1977) 186:241–50. doi: 10.1097/0000658-197709000-00002
36. Brown R, Banciewicz J, Hamid J, Patel NJ, Ward CA, Farrand RJ, et al. Failure of delayed hypersensitivity skin testing to predict postoperative sepsis and mortality. *Br Med J*. (1982) 284:851–3. doi: 10.1136/bmj.284.6319.851
37. Meakins JL, Christou NV, Bohnen J, Maclean LD. Failure of delayed hypersensitivity skin testing to predict postoperative sepsis and mortality. *Br Med J*. (1982) 285:1207–8. doi: 10.1136/bmj.285.6349.1207-a
38. Vissinga C, Nagelkerken L, Zijlstra J, Hertogh-Huijbregts A, Boersma W, Rozing J. A decreased functional capacity of CD4+ T cells underlies the impaired DTH reactivity in old mice. *Mech Ageing Dev*. (1990) 53:127–39. doi: 10.1016/0047-6374(90)90065-N
39. Gurung P, Rai D, Condotta SA, Babcock JC, Badovinac VP, Griffith TS. Immune unresponsiveness to secondary heterologous bacterial infection after sepsis induction is TRAIL dependent. *J Immunol*. (2011) 187:2148–54. doi: 10.4049/jimmunol.1101180
40. Condotta SA, Rai D, James BR, Griffith TS, Badovinac VP. Sustained and incomplete recovery of naive CD8+ T cell precursors after sepsis contributes to impaired CD8+ T cell responses to infection. *J Immunol*. (2013) 190:1991–2000. doi: 10.4049/jimmunol.1202379
41. Condotta SA, Khan SH, Rai D, Griffith TS, Badovinac VP. Polymicrobial sepsis increases susceptibility to chronic viral infection and exacerbates CD8+ T cell exhaustion. *J Immunol*. (2015) 195:116–25. doi: 10.4049/jimmunol.1402473
42. Sjaastad FV, Condotta SA, Kotov JA, Pape KA, Dail C, Danahy DB, et al. Polymicrobial sepsis chronic immunoparalysis is defined by diminished Ag-specific T cell-dependent B cell responses. *Front Immunol*. (2018) 9:2532. doi: 10.3389/fimmu.2018.02532
43. McDermott DS, Varga SM. Quantifying antigen-specific CD4 T cells during a viral infection: CD4 T cell responses are larger than we think. *J Immunol*. (2011) 187:5568–76. doi: 10.4049/jimmunol.1102104
44. Kotov DI, Kotov JA, Goldberg MF, Jenkins MK. Many Th cell subsets have fas ligand-dependent cytotoxic potential. *J Immunol*. (2018) 200:2004–12. doi: 10.4049/jimmunol.1700420
45. Benoun JM, Peres NG, Wang N, Pham OH, Rudisill VL, Fogassy ZN, et al. Optimal protection against Salmonella infection requires noncirculating memory. *Proc Natl Acad Sci USA*. (2018) 115:10416–21. doi: 10.1073/pnas.1808339115
46. Hess J, Ladel C, Miko D, Kaufmann SH. Salmonella typhimurium aroA-infection in gene-targeted immunodeficient mice: major role of CD4+ TCR-alpha beta cells and IFN-gamma in bacterial clearance independent of intracellular location. *J Immunol*. (1996) 156:3321–6.
47. Monack DM, Mueller A, Falkow S. Persistent bacterial infections: the interface of the pathogen and the host immune system. *Nat Rev Microbiol*. (2004) 2:747–65. doi: 10.1038/nrmicro955
48. Johanns TM, Ertelt JM, Lai JC, Rowe JH, Avant RA, Way SS. Naturally occurring altered peptide ligands control Salmonella-specific CD4+ T cell proliferation, IFN-gamma production, and protective potency. *J Immunol*. (2010) 184:869–76. doi: 10.4049/jimmunol.0901804
49. Johanns TM, Ertelt JM, Rowe JH, Way SS. Regulatory T cell suppressive potency dictates the balance between bacterial proliferation and clearance during persistent Salmonella infection. *PLoS Pathog*. (2010) 6:e1001043. doi: 10.1371/journal.ppat.1001043
50. Marzo AL, Vezys V, Williams K, Tough DE, Lefrancois L. Tissue-level regulation of Th1 and Th2 primary and memory CD4 T cells in response to Listeria infection. *J Immunol*. (2002) 168:4504–10. doi: 10.4049/jimmunol.168.9.4504
51. Delano MJ, Thayer T, Gabrilovich S, Kelly-Scumpia KM, Winfield RD, Scumpia PO, et al. Sepsis induces early alterations in innate immunity that impact mortality to secondary infection. *J Immunol*. (2011) 186:195–202. doi: 10.4049/jimmunol.1002104
52. Condotta SA, Richer MJ, Badovinac VP, Harty JT. Probing CD8 T cell responses with *Listeria monocytogenes* infection. *Adv Immunol*. (2012) 113:51–80. doi: 10.1016/B978-0-12-394590-7.00005-1
53. Brocke S, Hahn H. Heat-killed *Listeria monocytogenes* and *L. monocytogenes* soluble antigen induce clonable CD4+ T lymphocytes with protective and chemotactic activities *in vivo*. *Infect Immun*. (1991) 59:4531–9. doi: 10.1128/IAI.59.12.4531-4539.1991
54. Harty JT, Schreiber RD, Bevan MJ. CD8 T cells can protect against an intracellular bacterium in an interferon gamma-independent fashion. *Proc Natl Acad Sci USA*. (1992) 89:11612–6. doi: 10.1073/pnas.89.23.11612
55. Bhardwaj V, Kanagawa O, Swanson PE, Unanue ER. Chronic Listeria infection in SCID mice: requirements for the carrier state and the dual role of T cells in transferring protection or suppression. *J Immunol*. (1998) 160:376–84.
56. Vincent JL, Marshall JC, Namendys-Silva SA, Francois B, Martin-Loeches I, Lipman J, et al. Assessment of the worldwide burden of critical illness: the intensive care over nations (ICON) audit. *Lancet Respir Med*. (2014) 2:380–6. doi: 10.1016/S2213-2600(14)70061-X
57. Cohen J, Vincent JL, Adhikari NK, Machado FR, Angus DC, Calandra T, et al. Sepsis: a roadmap for future research. *Lancet Infect Dis*. (2015) 15:581–614. doi: 10.1016/S1473-3099(15)70112-X
58. Le Gros G, Ben-Sasson SZ, Seder R, Finkelman FD, Paul WE. Generation of interleukin 4 (IL-4)-producing cells *in vivo* and *in vitro*: IL-2 and IL-4 are required for *in vitro* generation of IL-4-producing cells. *J Exp Med*. (1990) 172:921–9. doi: 10.1084/jem.172.3.921
59. Hsieh CS, Heimberger AB, Gold JS, O'garra A, Murphy KM. Differential regulation of T helper phenotype development by interleukins 4 and 10 in an alpha beta T-cell-receptor transgenic system. *Proc Natl Acad Sci USA*. (1992) 89:6065–9. doi: 10.1073/pnas.89.13.6065
60. Chen X, Ye J, Ye J. Analysis of peripheral blood lymphocyte subsets and prognosis in patients with septic shock. *Microbiol Immunol*. (2011) 55:736–42. doi: 10.1111/j.1348-0421.2011.00373.x
61. Gouel-Cheron A, Venet F, Allaouchiche B, Monneret G. CD4+ T-lymphocyte alterations in trauma patients. *Crit Care*. (2012) 16:432. doi: 10.1186/cc11376
62. Inoue S, Suzuki-Utsunomiya K, Okada Y, Taira T, Iida Y, Miura N, et al. Reduction of immunocompetent T cells followed by prolonged lymphopenia in severe sepsis in the elderly. *Crit Care Med*. (2013) 41:810–9. doi: 10.1097/CCM.0b013e318274645f
63. Baker CC, Miller CL, Trunkey DD, Lim RC Jr. Identity of mononuclear cells which compromise the resistance of trauma patients. *J Surg Res*. (1979) 26:478–87. doi: 10.1016/0022-4804(79)90037-4
64. Hansbrough JE, Bender EM, Zapata-Sirvent R, Anderson J. Altered helper and suppressor lymphocyte populations in surgical patients. A measure of postoperative immunosuppression. *Am J Surg*. (1984) 148:303–7. doi: 10.1016/0002-9610(84)90459-8

65. Uzzaman A, Cho SH. Chapter 28: Classification of hypersensitivity reactions. *Allergy Asthma Proc.* (2012) 33(Suppl. 1):S96–99. doi: 10.2500/aap.2012.33.3561
66. Hamilton SE, Badovinac VP, Beura LK, Pierson M, Jameson SC, Masopust D, et al. New insights into the immune system using dirty mice. *J Immunol.* (2020) 205:3–11. doi: 10.4049/jimmunol.2000171
67. Grayson JM, Harrington LE, Lanier JG, Wherry EJ, Ahmed R. Differential sensitivity of naive and memory CD8+ T cells to apoptosis *in vivo*. *J Immunol.* (2002) 169:3760–70. doi: 10.4049/jimmunol.169.7.3760
68. Hotchkiss RS, Osmon SB, Chang KC, Wagner TH, Coopersmith CM, Karl IE. Accelerated lymphocyte death in sepsis occurs by both the death receptor and mitochondrial pathways. *J Immunol.* (2005) 174:5110–8. doi: 10.4049/jimmunol.174.8.5110
69. Unsinger J, Mcglynn M, Kasten KR, Hoekzema AS, Watanabe E, Muenzer JT, et al. IL-7 promotes T cell viability, trafficking, and functionality and improves survival in sepsis. *J Immunol.* (2010) 184:3768–79. doi: 10.4049/jimmunol.0903151
70. Serbanescu MA, Ramonell KM, Hadley A, Margoles LM, Mittal R, Lyons JD, et al. Attrition of memory CD8 T cells during sepsis requires LFA-1. *J Leukoc Biol.* (2016) 100:1167–80. doi: 10.1189/jlb.4A1215-563RR
71. Danahy DB, Anthony SM, Jensen IJ, Hartwig SM, Shan Q, Xue HH, et al. Polymicrobial sepsis impairs bystander recruitment of effector cells to infected skin despite optimal sensing and alarming function of skin resident memory CD8 T cells. *PLoS Pathog.* (2017) 13:e1006569. doi: 10.1371/journal.ppat.1006569
72. Danahy DB, Strother RK, Badovinac VP, Griffith TS. Clinical and experimental sepsis impairs CD8 T-cell-mediated immunity. *Crit Rev Immunol.* (2016) 36:57–74. doi: 10.1615/CritRevImmunol.2016017098
73. Xie J, Chen CW, Sun Y, Laurie SJ, Zhang W, Otani S, et al. Increased attrition of memory T cells during sepsis requires 2B4. *JCI Insight.* (2019) 4:e126030. doi: 10.1172/jci.insight.126030
74. Hotchkiss RS, Swanson PE, Knudson CM, Chang KC, Cobb JP, Osborne DF, et al. Overexpression of Bcl-2 in transgenic mice decreases apoptosis and improves survival in sepsis. *J Immunol.* (1999) 162:4148–56. doi: 10.1097/00024382-199806001-00219
75. Hotchkiss RS, Chang KC, Swanson PE, Tinsley KW, Hui JJ, Klender P, et al. Caspase inhibitors improve survival in sepsis: a critical role of the lymphocyte. *Nat Immunol.* (2000) 1:496–501. doi: 10.1038/82741
76. Inoue S, Unsinger J, Davis CG, Muenzer JT, Ferguson TA, Chang K, et al. IL-15 prevents apoptosis, reverses innate and adaptive immune dysfunction, and improves survival in sepsis. *J Immunol.* (2010) 184:1401–9. doi: 10.4049/jimmunol.0902307
77. Unsinger J, Kazama H, McDonough JS, Griffith TS, Hotchkiss RS, Ferguson TA. Sepsis-induced apoptosis leads to active suppression of delayed-type hypersensitivity by CD8+ regulatory T cells through a TRAIL-dependent mechanism. *J Immunol.* (2010) 184:6766–72. doi: 10.4049/jimmunol.0904054
78. Cavassani KA, Carson WFT, Moreira AP, Wen H, Schaller MA, Ishii M, et al. The post sepsis-induced expansion and enhanced function of regulatory T cells create an environment to potentiate tumor growth. *Blood.* (2010) 115:4403–11. doi: 10.1182/blood-2009-09-241083
79. Stieglitz D, Schmid T, Chhabra NF, Echtenacher B, Mannel DN, Mostböck S. TNF and regulatory T cells are critical for sepsis-induced suppression of T cells. *Immun Inflamm Dis.* (2015) 3:374–85. doi: 10.1002/iid3.75
80. Rimmele T, Payen D, Cantaluppi V, Marshall J, Gomez H, Gomez A, et al. Immune cell phenotype and function in sepsis. *Shock.* (2016) 45:282–91. doi: 10.1097/SHK.0000000000000495
81. Hall MW, Knatz NL, Vetterly C, Tomarello S, Wewers MD, Volk HD, et al. Immunoparalysis and nosocomial infection in children with multiple organ dysfunction syndrome. *Intensive Care Med.* (2011) 37:525–32. doi: 10.1007/s00134-010-2088-x
82. Otto GP, Sossdorf M, Claus RA, Rodel J, Menge K, Reinhart K, et al. The late phase of sepsis is characterized by an increased microbiological burden and death rate. *Crit Care.* (2011) 15:R183. doi: 10.1186/cc10332
83. Goldenberg NM, Leligdowicz A, Slutsky AS, Friedrich JO, Lee WL. Is nosocomial infection really the major cause of death in sepsis? *Crit Care.* (2014) 18:540. doi: 10.1186/s13054-014-0540-y
84. Daviaud F, Grimaldi D, Dechartres A, Charpentier J, Geri G, Marin N, et al. Timing and causes of death in septic shock. *Ann Intensive Care.* (2015) 5:16. doi: 10.1186/s13613-015-0058-8
85. Zhao GJ, Li D, Zhao Q, Song JX, Chen XR, Hong GL, et al. Incidence, risk factors and impact on outcomes of secondary infection in patients with septic shock: an 8-year retrospective study. *Sci Rep.* (2016) 6:38361. doi: 10.1038/srep38361
86. Strother RK, Danahy DB, Kotov DI, Kucaba TA, Zacharias ZR, Griffith TS, et al. Polymicrobial sepsis diminishes dendritic cell numbers and function directly contributing to impaired primary CD8 T cell responses *in vivo*. *J Immunol.* (2016) 197:4301–11. doi: 10.4049/jimmunol.1601463
87. Robertson CM, Perrone EE, McConnell KW, Dunne WM, Boody B, Brahmabhatt T, et al. Neutrophil depletion causes a fatal defect in murine pulmonary *Staphylococcus aureus* clearance. *J Surg Res.* (2008) 150:278–85. doi: 10.1016/j.jss.2008.02.009

Conflict of Interest: The authors declare that the research was conducted in the absence of any commercial or financial relationships that could be construed as a potential conflict of interest.

Copyright © 2020 Sjaastad, Kucaba, Dilepan, Swanson, Dail, Cabrera-Perez, Murphy, Badovinac and Griffith. This is an open-access article distributed under the terms of the Creative Commons Attribution License (CC BY). The use, distribution or reproduction in other forums is permitted, provided the original author(s) and the copyright owner(s) are credited and that the original publication in this journal is cited, in accordance with accepted academic practice. No use, distribution or reproduction is permitted which does not comply with these terms.