

# Chimeric antigen receptor T-cell therapy in adults with B-cell acute lymphoblastic leukemia

Punita Grover,<sup>1</sup> Olivier Veilleux,<sup>2</sup> Lu Tian,<sup>3</sup> Ryan Sun,<sup>4</sup> Melissa Previtara,<sup>5</sup> Emily Curran,<sup>1</sup> and Lori Muffly<sup>2</sup>

<sup>1</sup>Division of Hematology and Oncology, University of Cincinnati Medical Center, Cincinnati, OH; <sup>2</sup>Division of Blood and Marrow Transplantation and Cellular Therapy, Stanford University, CA; <sup>3</sup>Department of Health Research and Policy, Stanford University, Stanford, CA; <sup>4</sup>Department of Biostatistics, University of Texas MD Anderson Cancer Center, Houston, TX; and <sup>5</sup>Health Sciences Library, University of Cincinnati, Cincinnati, OH

Chimeric antigen receptor T-cell (CAR-T) therapy has transformed treatment paradigms for relapsed/refractory (r/r) B-cell acute lymphoblastic leukemia (B-ALL) in children and younger adults. We performed a systematic review to investigate the published literature on efficacy and toxicity of CAR-T therapy in adults with r/r B-ALL. We searched MEDLINE, Embase, and the Cochrane Library for prospective interventional studies and included published studies of  $\geq 5$  patients with median age at enrollment of  $\geq 18$  years. Risk of bias was assessed with a modified Institute of Health Economics tool. A total of 2566 records were assessed; 16 studies involving 489 patients were included in the final analysis. The mean complete remission (CR) rate was 81% and the measurable residual disease (MRD)-negative remission rate was 81% at 4 weeks after CAR-T infusion. With median follow-up across studies of 24 months, the cumulative 12-month probabilities of progression-free survival (PFS) and overall survival (OS) were 37% (95% CI, 26-48) and 57% (95% CI, 49-65), respectively. Relapse occurred in 40.3% of cases; target antigen was retained in 73.2% of relapses. Across studies, any grade of cytokine release syndrome (CRS) occurred in 82% of patients (95% CI, 61-95) and grade 3 or higher CRS in 27% (95% CI, 18-36). Neurotoxicity of any grade occurred in 34% of patients (95% CI, 24-47) and grade 3 or higher in 14% (95% CI, 1-25). In summary, CAR-T therapy achieves high early remission rates in adults with r/r B-ALL and represents a significant improvement over traditional salvage chemotherapy. Relapses are common and durable response remains a challenge.

## Introduction

Although cytotoxic multiagent chemotherapy cures  $>90\%$  of B-cell acute lymphoblastic leukemia (B-ALL) in children, B-ALL in older patients remains a challenge, with a large proportion of adults developing leukemia that is either refractory to or recurs after front-line therapy.<sup>1,2</sup> The development and ultimate approval of chimeric antigen receptor T-cell therapy (CAR-T) represents a striking breakthrough in ALL therapeutics, where the availability of commercial CD19-targeting CAR-T therapy has transformed treatment paradigms for r/r B-ALL in children and younger adults. In the pivotal single-arm phase 2 multicenter ELIANA trial, 75 children and adolescents up to age 21 received tisagenlecleucel (Kymriah;

Submitted 16 June 2021; accepted 2 September 2021; prepublished online on *Blood Advances* First Edition 5 October 2021; final version published online 7 March 2022. DOI 10.1182/bloodadvances.2020003482.

Presented in abstract form at the ninth annual meeting of the Society of Hematologic Oncology, Houston, TX, 8-10 September 2021.

For original data, please contact the corresponding author (lmuffly@stanford.edu).

The full-text version of this article contains a data supplement.

© 2022 by The American Society of Hematology. Licensed under Creative Commons Attribution-NonCommercial-NoDerivatives 4.0 International (CC BY-NC-ND 4.0), permitting only noncommercial, nonderivative use with attribution. All other rights reserved.

Novartis). Remission was achieved in 82%; the 12-month event free survival (EFS) and overall survival (OS) were 50% and 76%, respectively; and the median duration of remission was not reached.<sup>3</sup> Recently presented “real world” outcomes with tisagenlecleucel confirm similar response and survival outcomes in pediatric r/r B-ALL.<sup>4</sup> Currently, only a fraction of patients with r/r B-ALL receive commercial CAR-T therapy in the United States, as the indication is restricted to patients under the age of 26 years. Thus, extrapolation of the results of the pediatric CAR-T experience to adults with r/r B-ALL is limited.

Despite the lack of a commercially available CAR-T for adults with r/r ALL in the United States, a variety of groups around the world have reported results of prospective, early-phase studies of various CAR-T constructs in r/r B-ALL in adults. Recognizing that CAR-T outcomes in adult ALL are likely to differ from pediatric reports, we perceived a need for a comprehensive evaluation of CAR-T in r/r adult B-ALL. To overcome the challenges of interpreting data across heterogeneous studies, we conducted a systematic review focused on the efficacy and toxicity of CAR-T therapy in adults with r/r B-ALL. Other systematic reviews of CAR-T therapy in pediatric and general r/r ALL have been published; however, the focus of our analysis is on studies with primarily adult patient populations.<sup>5,6</sup> The results of our study will aid clinicians in caring for adults with r/r B-ALL by providing a review of overall response and survival estimates of published CAR-T trials and will provide a general benchmark for investigators studying CAR-T therapies in adult ALL.

## Methods

### Information sources and search strategy

We performed a systematic review according to the Cochrane Collaboration Guidelines, and the findings are reported in accordance with the Preferred Reporting Items for Systematic Reviews and Meta-Analyses (PRISMA) guidelines.<sup>7,8</sup>

MEDLINE, Embase, and Cochrane Library were searched for records discussing CAR-T therapy and B-ALL. After 4 gold-standard articles were analyzed with Yale Mesh Analyzer (<https://mesh.med.yale.edu/>), search strategies were created and run by a librarian who used a combination of keywords and controlled vocabulary to search the databases MEDLINE (EBSCOhost), Embase (Elsevier), and Cochrane. No filters or limits were applied to the search. All search strategies were completed and run on 16 November 2020. Records were uploaded to and deduplicated through EndNote. Once the initial deduplication was completed, 2574 records were then uploaded to Covidence for a secondary deduplication and analysis. Eight additional duplicates were found in Covidence, meaning 2566 unique results were assessed with the inclusion and exclusion criteria. Full search strategies can be found in the supplemental Materials. One study, published after the search inclusion date, was subsequently included in the analyses because of its potential to make a significant impact in the field.<sup>9</sup> The protocol was registered with the international prospective register of systematic reviews (PROSPERO), in accordance with PRISMA-P guidelines (PROSPERO CRD42021226121).<sup>10,11</sup>

### Eligibility criteria and outcome measures

We included prospective interventional studies that reported data on the outcomes of adults with B-ALL treated with CAR-T therapy,

if they met the following inclusion criteria: (1) studies enrolling adults only ( $\geq 18$  years) or both pediatric and adult patients if the median age of the study population was  $\geq 18$  years and (2) studies enrolling  $\geq 5$  patients. Both single and multi-institutional studies were included. If more than 1 publication reported on the same clinical trial, the published manuscript with the most recently updated results was included. Two studies that met the criteria were excluded: the first one because of insufficient reporting on survival outcomes and the second one because of detected data inconsistencies. Unpublished gray literature, as well as published abstracts, commentaries, reviews, editorials, and articles in languages other than English were also excluded. The efficacy outcomes were rate of complete remission (CR), measurable residual disease (MRD)-negative remission, progression free survival (PFS), and overall survival (OS). The toxicity outcomes were cytokine release syndrome (CRS) and neurotoxicity at any time after CAR-T therapy.

### Data collection process

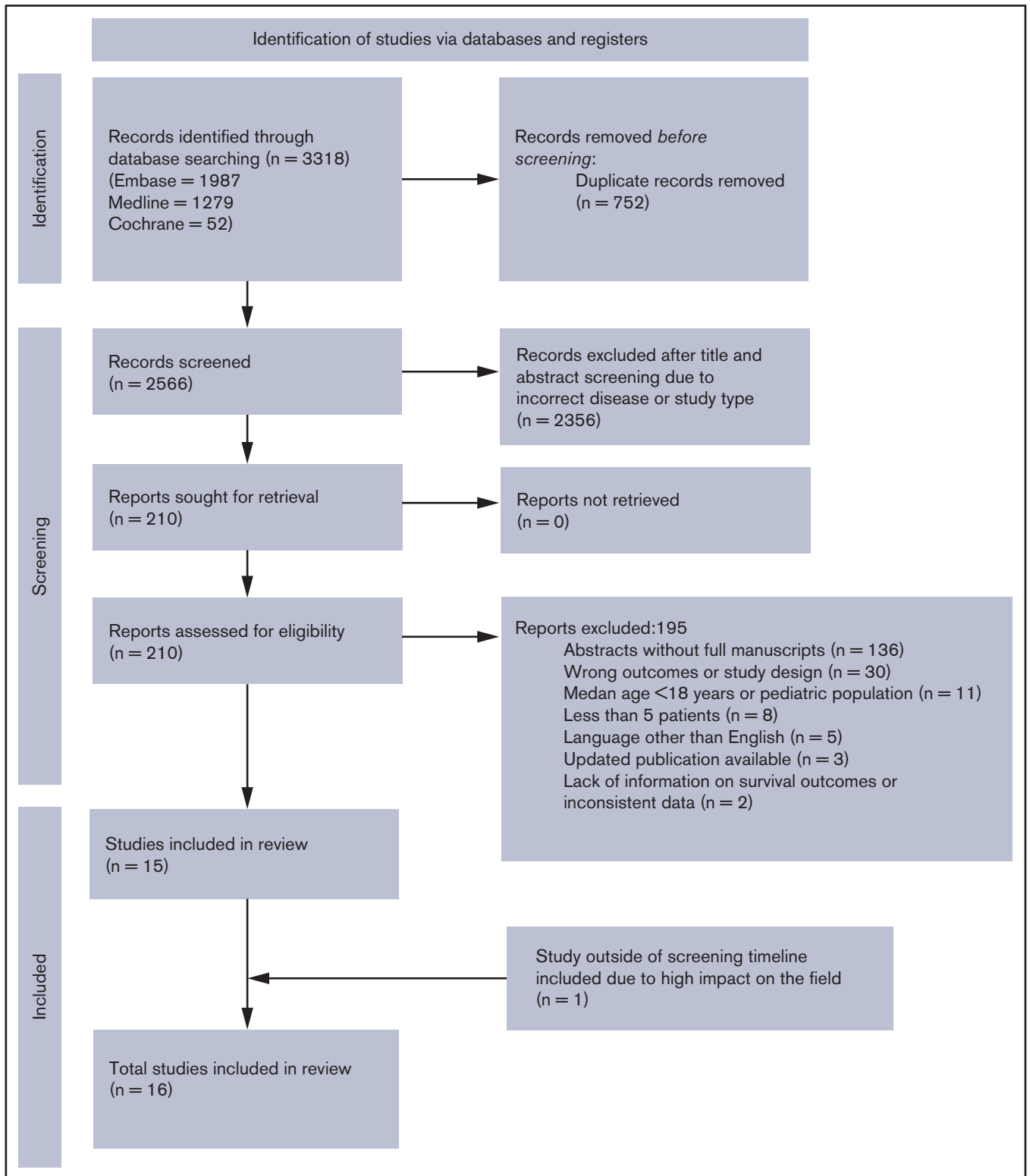
Two review authors (P.G. and O.V.) independently screened the retrieved titles and abstracts from the search results according to the inclusion and exclusion criteria. Full texts were reviewed to confirm that the inclusion criteria were met. A standardized data extraction template was used, and data were extracted independently by 2 investigators (P.G. and O.V.). Any discrepancies during the screening or data extraction process were resolved by discussion with other investigators (L.M. and E.C.). Extracted study characteristics included journal title, the first author, trial design, study sample size and patient characteristics (age, prior therapies, disease characteristics before CAR-T therapy, presence of extramedullary or central nervous system disease, and proportion of Philadelphia chromosome-positive [Ph<sup>+</sup>] patients). CAR-T characteristics including T-cell origin, antigen target, CD19 scFV clone, costimulatory domain, dose, and lymphodepletion regimen were also extracted. The data extracted for efficacy outcomes included the number of patients who achieved complete remission and MRD-negative remission within 30 days of CAR-T infusion and the number of patients with no evidence of disease and those alive at the 12-month follow-up. The number of patients who relapsed, antigen expression at relapse, and the number of patients who underwent allogeneic stem cell transplant after CAR-T therapy were also extracted. Data extracted for toxicity included proportion of patients who experienced CRS or neurotoxicity at any time after infusion and the study-specific toxicity grading system used.

### Study qualitative assessment

A modified Institute of Health Economics (IHE) risk of bias tool was used to evaluate all included studies.<sup>12</sup> This modified tool contains 19 items for assessment of study objectives, study design, intervention, outcomes measures, statistical analysis, results, and conflicts of interest. The risk-of-bias assessment was performed independently by 2 review authors (P.G. and O.V.), and disagreements were resolved through discussion with other study authors (E.C. and L.M.).

### Statistical Analysis

For time-to-event end points (OS/PFS), we performed parametric meta-analyses assuming exponential survival distribution for event time in individual study. The log-transformed hazard rate from individual study follows a common normal distribution, center of which is



**Figure 1.** Literature search diagram/PRISMA flow diagram.

the parameter of interest. Hazard rate estimates from individual studies were extracted from the reported 12-month survival probability, the 24-month survival probability, median survival time, reported

individual patient data, or reconstructed individual patient data from the published Kaplan-Meier curves. For binary end points (CR, MRD, CRS, and neurotoxicity), we fit the  $\beta$ -binomial random effects

**Table 1. Baseline patient and CAR-T characteristics**

Study	Patients, n	Age		Prior HSCT n (%)	Ph <sup>+</sup> n, (%)	Median pre-CAR-T blast, %	CAR-T construct type	T-cell origin	Antigen target	Median dose
		Median age	Combined/adult-only							
Dai et al, 2020 <sup>15</sup>	6	23.5 (17-44)	Combined	0	1 (16.67)	46.97	41BB	Autologous	Bispecific C19/22	2 × 10 <sup>6</sup> per kg
Dai et al, 2015 <sup>16</sup>	9	35 (15-65)	Combined	3 (33.33)	5 (55.56)	73.44	41BB	Autologous/ allogeneic*	CD19	4.5 × 10 <sup>6</sup> per kg
Frey et al, 2020 <sup>17</sup>	35	34 (21-70)	Adult	13 (37.14)	3 (8.57)	NA	41BB	Autologous	CD19	Total dose: 5 × 10 <sup>8</sup>
Gu et al, 2020 <sup>18</sup>	20	18 (3-52)	Combined	NA	2 (10)	35.50	41BB	Autologous	CD19	5 × 10 <sup>6</sup> per kg
Hay et al, 2019 <sup>19</sup>	53	39 (20-76)	Adult	23 (43.40)	11 (20.75)	28	41BB	Autologous	CD19	2 × 10 <sup>5</sup> per kg
Hua et al, 2020 <sup>20</sup>	11	28 (12-39)	Combined	11 (100)	5 (45.45)	NA	41BB	Allogeneic	CD19	5 × 10 <sup>6</sup> per kg
Hu et al, 2017 <sup>21</sup>	15	32 (7-57)	Combined	7 (46.67)	4 (26.67)	63.50	41BB	Autologous	CD19	3.7 × 10 <sup>6</sup> per kg
Jiang et al, 2019 <sup>22</sup>	58	28 (10-65)	Combined	3 (5.17)	7 (12.07)	12.10	41BB	Autologous	CD19	1.66 × 10 <sup>6</sup> per kg
Li et al, 2018 <sup>23</sup>	10	33 (18-59)	Adult	1 (10)	2 (20)	12.75	41BB, CD28†	Autologous	CD19	0.62 × 10 <sup>6</sup> per kg
Ma et al, 2020 <sup>24</sup>	9	34.1 (16-57)	Combined	0	2 (22.22)	5.20	41BB	Autologous	CD19	1 × 10 <sup>6</sup> per kg
Ortiz-Maldonado et al, 2020 <sup>25</sup>	38§	24.5 (3-67)	Combined	33 (86.84)	NA	NA	41BB	Autologous	CD19	NA
Park et al, 2018 <sup>26</sup>	53	44 (23-64)	Adult	19 (35.85)	16 (30.19)	63	CD28	Autologous	CD19	3 × 10 <sup>6</sup> per kg
Shah et al, 2021 <sup>9</sup>	55	40 (IQR 28-52)	Adult	23 (42)	15 (27)	60	CD28	Autologous	CD19	1 × 10 <sup>6</sup> per kg
Wang et al, 2020 <sup>27</sup>	23	42 (10-67)	Combined	0	7 (30.43)	40.40	41BB	Autologous	CD19	1 × 10 <sup>6</sup> per kg
Wang et al, 2020 <sup>28</sup>	51	27 (9 to 62)	Combined	9 (17.65)	13 (25.49)	59	Third generation	Autologous	Sequential CD19 followed by CD22	CAR19: 2.6 × 10 <sup>6</sup> per kg CAR22: 2.7 × 10 <sup>6</sup> per kg
Zhang et al, 2020 <sup>29</sup>	43	24 (4 to 60)	Combined	43 (100)	5 (11.63)	NA	41BB, CD28‡	Allogeneic	CD19	1.76 10 <sup>6</sup> per kg

\*Seven (77.77%) patients received autologous CAR-T, and 2 (22.22%) received allogeneic CAR-T.

†Five (50%) patients received 41BB CAR-T cells and 5 (50%) received CD28 CAR-T cells.

‡Efficacy outcome analysis done for 27 patients who were > 18 years, toxicity analysis done for all 38 patients (adult and pediatric) since toxicity data for only adult patients was not available

§Twenty-five (58.13%) patients received 41BB CAR-T cells, and 18 (41.87%) received CD28 CAR-T cells.

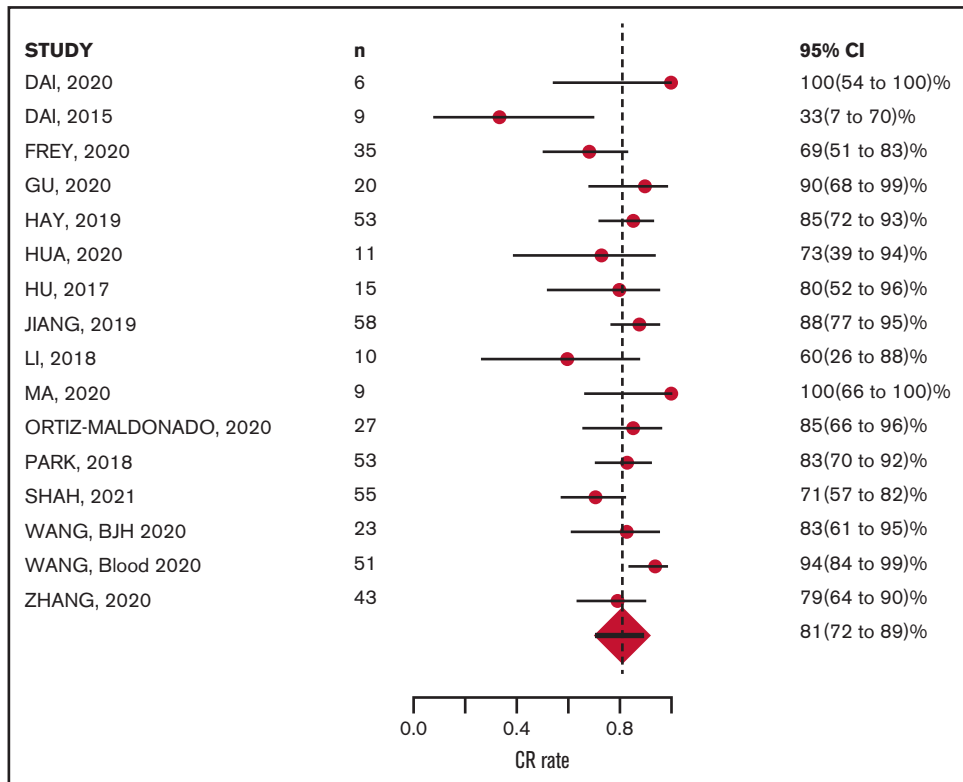


Figure 2. CR at ~4 weeks after CAR-T infusion: 81% (range, 72% to 89%).

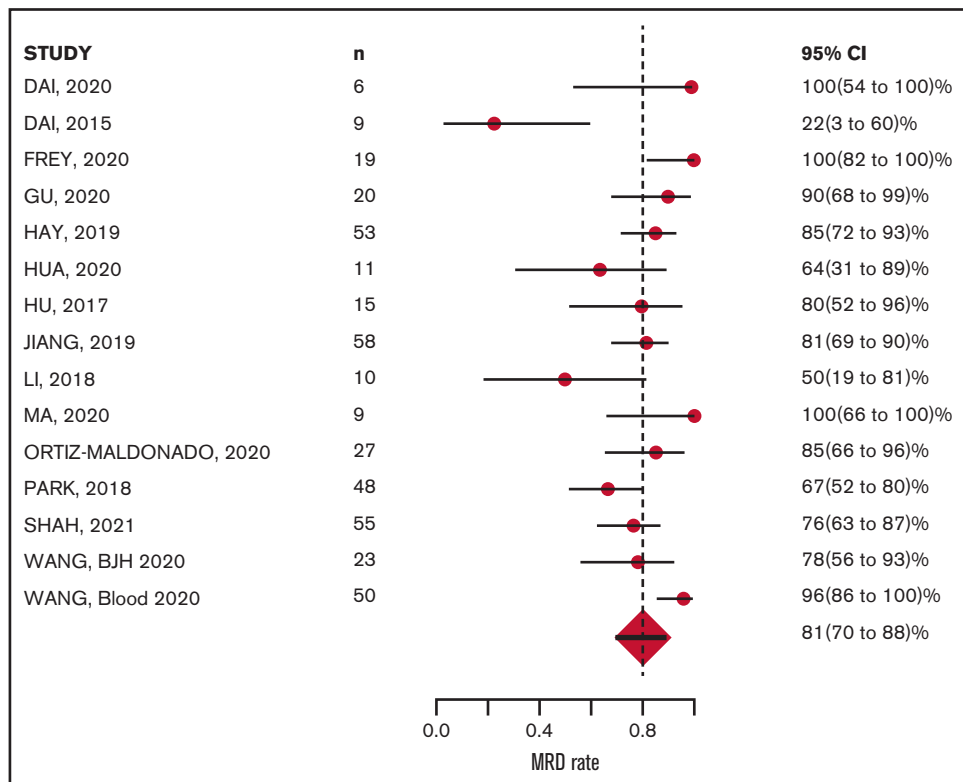
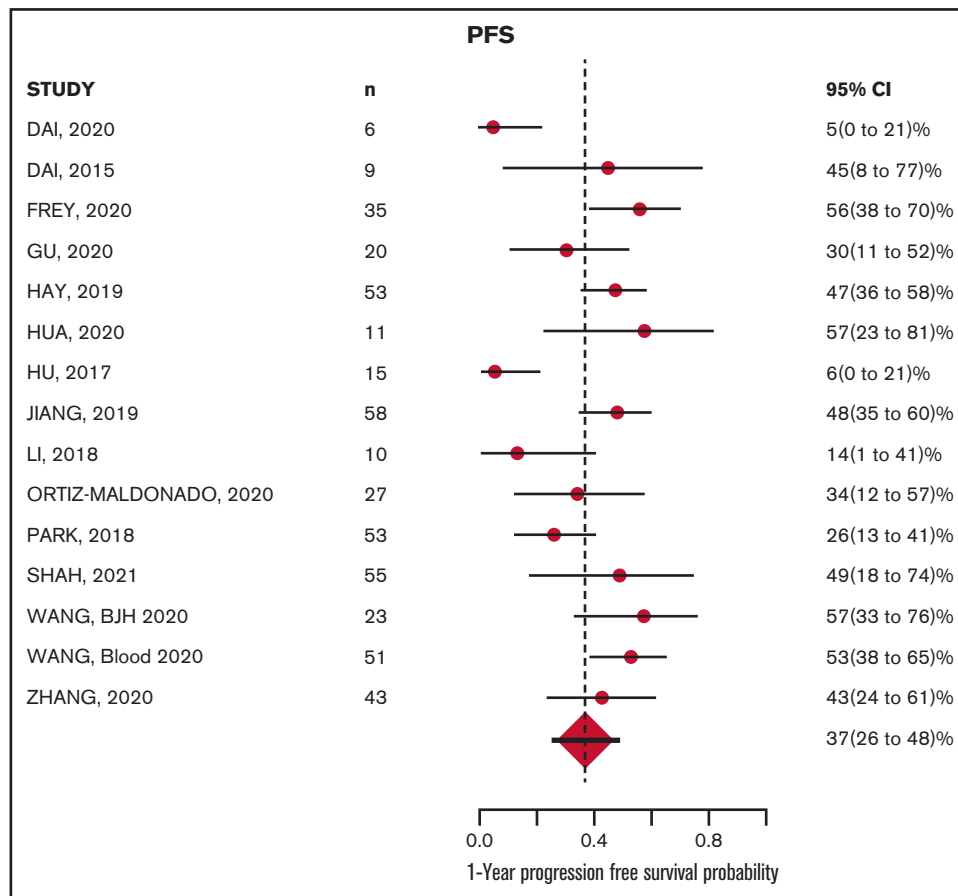


Figure 3. MRD-negative remission at ~4 weeks after CAR-T infusion: 81% (range, 70% to 88%).



**Figure 4. PFS at 12 months: 37% (range, 26% to 48%).**

model, which enables between-study heterogeneity to construct the exact 95% confidence interval (CI) for the mean incidence rate across studies.<sup>13</sup> Additionally, we repeated the meta analyses in subgroups of studies with adult patients only, and subgroups of studies limited to receipt of CD19-targeting CAR-T constructs, and the exact CI was constructed under the normal-normal random effects model considering the small number of studies.<sup>14</sup> The median of maximum follow-up time from individual studies was calculated. The study-specific maximum follow-up time was obtained, either by reported individual patient level data or the Kaplan-Meier curves. Last, we performed meta regression analysis to study the association of hazard rate for time-to-event end points or incidence rate for binary end points with median age, median pre-CAR-T blast percentage, prior allogeneic hematopoietic cell transplant (HCT) rate, T-cell construct type, and T-cell origin.

## Results

### Baseline patient and CAR-T characteristics

Our search identified 2566 unique records. Of those, 16 studies involving 489 patients met the inclusion criteria and were included in the final analysis.<sup>15-29</sup> The flowchart illustrating the literature search process is presented in Figure 1.<sup>8</sup> Baseline characteristics of patients and CAR-T studies are presented in Table 1 and

supplemental Tables 1 and 2. All studies were single-arm trials of patients with *r/r* B-ALL who had received at least 1 prior line of therapy. The majority of studies (11 of 16) included both pediatric and adult patients ( $n = 283$ ), but 5 of the studies enrolled only adult patients ( $n = 206$ ). The median age of patients in the 16 studies ranged from 18-44 years, with most studies (15 of 16) having a median patient age of  $>23$  years. Median prior lines of therapy ranged from 2 to 4 across studies (range, 1-11). Rates of prior allo-transplant and blinatumomab among all participants across studies were 40% and 19%, respectively. Most of the patients were in morphological relapse or had  $>5\%$  blasts in the bone marrow before CAR-T therapy (70.5%); however, 22% were in CR, with or without MRD. Extramedullary disease was reported in 13.5% patients across 9 studies; 13 patients (8.6%) across 6 studies were reported to have CNS disease at time of CAR-T therapy. CAR-T characteristics are summarized in supplemental Table 2. The majority of the studies used autologous CAR-T cells with 41BB costimulatory domain targeted against CD19. Fludarabine/cyclophosphamide alone or in combination with other chemotherapy was the most frequently used lymphodepletion regimen.

### Study quality

Risk of bias is summarized in supplemental Figure 1. Most studies were single center. Characteristics of patients included in the study, interventions, and relevant outcomes were well defined in most

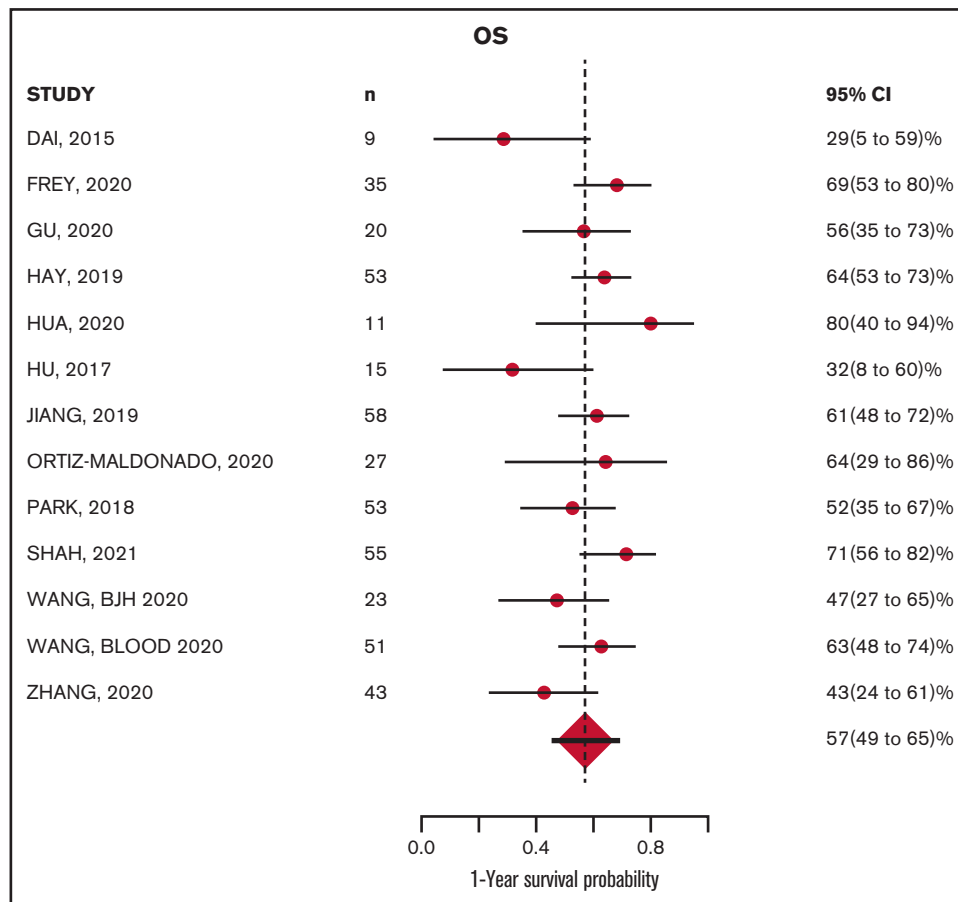


Figure 5. OS at 12 months: 57% (range, 49% to 65%).

studies. Detailed eligibility criteria, additional interventions, and adverse events were less uniformly reported.

### Efficacy

The CR rate was available for all 16 studies and MRD-negative remission rate was available for 15 of the 16 studies. Response was measured 28 to 30 days after CAR-T infusion in 12 studies; however, in 4 studies, response was measured at earlier time points: Wang et al<sup>27</sup> measured response 14 days after CAR-T infusion, Zhang et al<sup>29</sup> at 21 days, Park et al<sup>26</sup> and Li et al<sup>23</sup> between 20 and 30 days. Of 489 evaluable patients, 400 achieved CR, with a mean CR rate of 81% (95% CI, 72-89; Figure 2). Of 428 evaluable patients, 341 achieved MRD-negative remission; the mean MRD negative remission rate was 81% (95% CI, 70-89; Figure 3). Relapse was reported in 183 patients (40%) during study follow-up. Target antigen status at the time of relapse was reported in 131 patients across 11 studies: antigen loss occurred in 26.7%, whereas 73.2% were reported to have a target antigen-positive relapse (supplemental Table 3).

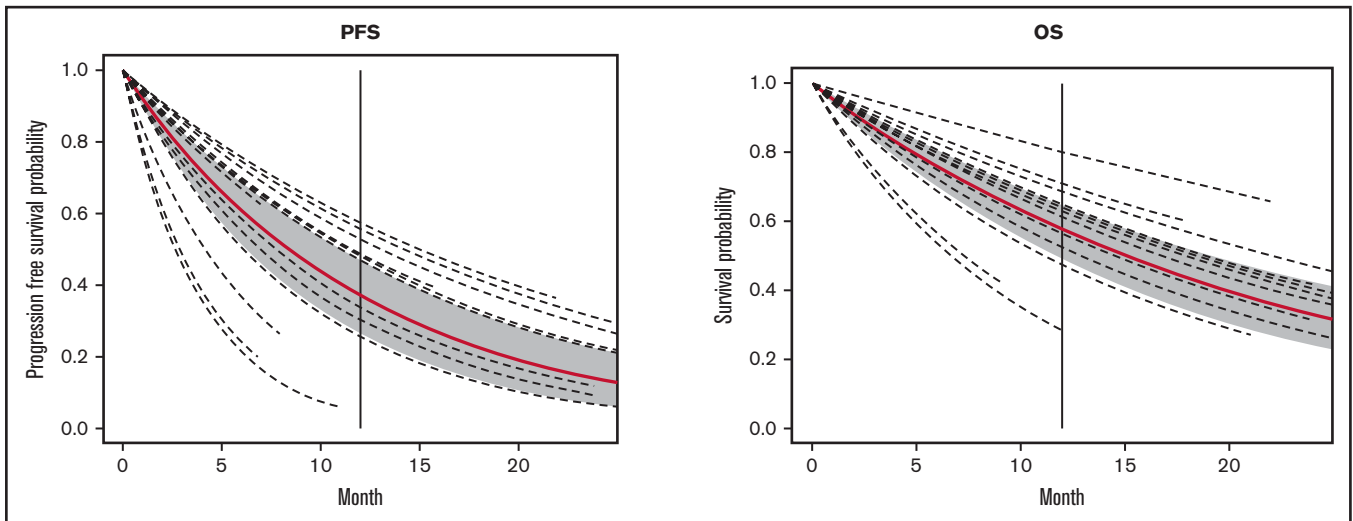
The median follow-up from time of infusion across studies was 24 months (with range of median follow-up from 7 to 65 months). The estimated median PFS and OS were 8.4 (6.2-11.3) months and 15 (11.6-19.4) months, respectively. The estimated PFS and OS at 12 months after CAR-T infusion were available in 15 and 13 studies,

respectively (Figures 4-5; supplemental Tables 5 and 6). The cumulative 12-month PFS probability was 37% (95% CI, 26-48), and the 12-month OS probability was 57% (95% CI, 49-65; Figure 6). A sensitivity analysis was performed to evaluate outcomes in the studies limited to CD19-directed CAR-T constructs (n = 14), with similar findings observed: CR rate was 80% (95% CI, 70-88), MRD-negative remission rate was 78% (95% CI, 69-87), 12-month PFS was 37% (95% CI, 27-47), and 12-month OS was 56% (95% CI, 47-64). An additional analysis limited to the 5 studies that excluded patients <18 years of age demonstrated a 12-month PFS probability of 39% (95% CI, 18-60) and a 12-month OS probability of 64% (95% CI, 52-74) (supplemental Figures 6 and 7). We were unable to determine any significant associations between patient and CAR-T characteristics and outcomes in meta regression analyses (supplemental Table 4). Although 26% of patients were reported to have undergone allogeneic HCT after CAR-T, censoring at HCT was not performed uniformly across studies, which limited our ability to capture the impact of consolidative HCT on survival outcomes.

### CRS and neurotoxicity

The incidence of any grade of CRS and grade 3 or higher CRS were reported in 13 and 16 studies, respectively, using a variety of CRS grading scales (supplemental Table 3).<sup>26,30-33</sup> The cumulative incidence of any grade CRS was 82% (95% CI, 61-95) and grade



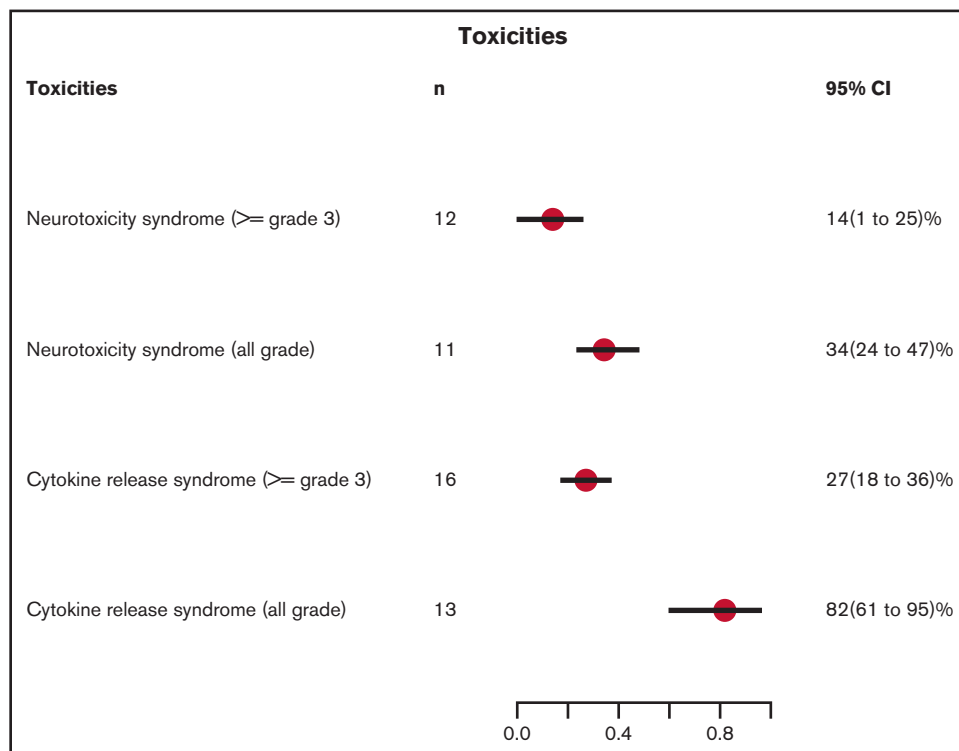


**Figure 6. Survival curves for PFS and OS.** Vertical line, 12-months; red line, the population survival curve from the meta-analysis; dotted lines, the survival curves from individual studies with different follow-up times.

3 or higher CRS was 27% (95% CI, 18-36; supplemental Figures 2 and 3). The incidence of any grade of neurotoxicity and grade 3 or higher neurotoxicity was reported in 11 and 12 studies, respectively. Neurotoxicity grading systems differed across studies, with the National Cancer Institute Common Terminology Criteria for Adverse Events (NCI CTCAE) used most commonly (supplemental Table 3). The cumulative incidence of any grade neurotoxicity was 34% (95% CI, 24-47) and grade 3 or higher was 14% (95% CI, 1-25; supplemental Figures 4 and 5). The toxicity data are summarized in Figure 7.

## Discussion

Although CAR-T therapies have been pursued in adult r/r B-ALL for several years, the published reports in this population have consisted of largely single-institution series of patients treated with a variety of CAR-T constructs and approaches. To summarize the literature and facilitate a comprehensive assessment of outcomes, we conducted a systematic review focused on published CAR-T trials in predominantly adult r/r B-ALL patients. Our analysis confirms very



**Figure 7. Cumulative incidence of toxicities.** n, number of studies with available data.



high responses across CAR-T therapies in r/r adult B-ALL and provides a benchmark for PFS and OS at 12 months of ~37% and ~57%, respectively. Despite the heterogeneity across published trials, the data provide evidence-based estimates of CAR-T outcomes for patients and clinicians treating adult patients with ALL and for investigators seeking to further advance knowledge in the field.

The treatment paradigm for r/r B-ALL in adults has changed dramatically over the past decade. Whereas historical salvage chemotherapy resulted in remission rates of ~30%,<sup>34,35</sup> pivotal phase 3 clinical trials of the newer targeted immunotherapies blinatumomab and inotuzumab ozogamicin demonstrate CR rates of 45% to 80%, respectively, predominantly MRD-negative.<sup>36,37</sup> These responses translate into median and 1-year survival of ~7.7 months and 35%, respectively. The data presented in this systematic review of CAR-T outcomes are not directly comparable to the randomized phase 3 trial data of targeted immunotherapeutic agents, but provide general estimates for consideration. Approximately 25% of the patients included in these CAR-T studies underwent allogeneic HCT after CAR. Although the current commercially available salvage agents for r/r B-ALL generally serve as a bridge to HCT, CAR-T therapies aspire to be stand-alone immunotherapies in the relapsed setting. We were unable to assess the impact of consolidative HCT on CAR-T outcomes in the current analysis, but prior studies have described mixed findings. The optimal sequencing of targeted therapies, HCT, and CAR-T, when they become commercially available in adult B-ALL, remains unknown and requires careful study.

Although most of the larger clinical trial and “real-world” population reports of CAR-T therapies in B-ALL are predominantly focused on children and adolescent/young adults (AYAs), our study provides insights that may differ from pediatric CAR-T results. First, although we did not conduct a statistical comparative analysis, the estimated 12-month PFS and OS in our report of ~37% and ~57% appear generally lower than has been reported in pediatric series, with PFS exceeding 50% and OS of ~75%.<sup>3,4,38</sup> A meta-analysis of CAR-T therapies in both pediatric and adult ALL demonstrated similar trends<sup>6</sup>; however, it is important to note that much of the pediatric CAR-T data in ALL are generated from a single product studied at a recommended phase 2 dose.<sup>3</sup> Second, we found that ~25% of the patients in our cohort relapsing after CAR had lost CD19 expression at relapse. The rates of CD19-negative relapse in pediatric reports have been closer to 50%.<sup>38</sup> It is possible that CAR-T cell persistence is reduced in heavily pretreated adults with ALL. This hypothesis requires additional study, as CAR-T cell persistence was not well described across studies. Finally, the safety profile in terms of CRS and neurotoxicity reported in our study demonstrated grade 3 or higher CRS in ~25% of patients and grade 3 or higher in 12%. Although comparison with pediatric CAR-T trials is limited by different toxicity grading systems and evolution of toxicity management over time, these findings at least support that CAR-T-associated toxicity is reasonable in adult B-ALL. Recent data

have demonstrated that both the efficacy and safety profile of CAR-T in r/r B-ALL in children/AYA was improved when patients entered therapy with <5% marrow blasts.<sup>38</sup> Evaluation of CAR-T as a potentially definitive therapy in MRD-positive B-ALL in adults warrants exploration.

Our systematic review has several limitations and leaves several important questions in the field unanswered. As mentioned, the current literature reporting CAR-T results in adults with r/r B-ALL is limited to smaller, often single-institution studies, with significant heterogeneity across CAR-T constructs. Further, we chose to include several smaller studies that did include children, so long as the median study population age was >18 years. Although the small number of patients under 18 years may have influenced outcomes, a sensitivity analysis that included 206 patients from 5 studies of exclusively adult patients showed no substantial differences in PFS or OS relative to the entire cohort. All of the clinical trials included were relatively small, single-arm clinical trials, often from single centers. Importantly, the lack of individual patient data limited robust subgroup analysis, which would have been informative. In our limited regression analyses, we lacked power to identify any patient or CAR-T factors that could have been significantly associated with outcome. Identifying patient- and disease-based predictors of response to CAR-T in adult ALL is important and will require larger multicenter trials and/or real-world registry/consortiums. The lack of consistent patient censoring or reporting of HCT makes it difficult to assess the influence of HCT on post-CAR outcomes. Finally, long-term outcome reports in this population will be useful in assessing overall durability associated with this therapy.

In summary, CAR-T therapy is associated with high rates of MRD-negative response across the reported clinical trials in r/r B-ALL in adults. Strategies aimed at improving durability and long-term outcomes through improved CAR T-cell persistence, multiantigen targeting, and optimization of patient selection will propel the next phase of CAR-T trials for adults with B-ALL.

## Authorship

Contributions: P.G., O.V., E.C., and L.M. designed the study; M.P., P.G., and O.V. collected the data; L.T. and R.S. performed the statistical analyses; all authors contributed to writing the manuscript; and all authors critically reviewed and approved the final version of the manuscript.

Conflict-of-interest disclosure: L.M. has received research funding from Jasper, Astellas, and Adaptive; has been a consultant to Amgen and Pfizer; and has received honoraria from UpToDate.

Correspondence: Lori Muffly, Division of Blood and Marrow Transplantation and Cellular Therapy, Stanford University, 300 Pasteur Dr, H0101, Stanford, CA 94305-5623; e-mail: lmuffly@stanford.edu.

## References

1. Sive JI, Buck G, Fielding A, et al. Outcomes in older adults with acute lymphoblastic leukaemia (ALL): results from the international MRC UKALL XII/ECOG2993 trial. *Br J Haematol*. 2012;157(4):463-471.
2. Roberts KG, Gu Z, Payne-Turner D, et al. High Frequency and Poor Outcome of Philadelphia Chromosome-Like Acute Lymphoblastic Leukemia in Adults. *J Clin Oncol*. 2017;35(4):394-401.

3. Maude SL, Laetsch TW, Buechner J, et al. Tisagenlecleucel in Children and Young Adults with B-Cell Lymphoblastic Leukemia. *N Engl J Med*. 2018;378(5):439-448.
4. Pasquini MC, Hu ZH, Curran K, et al. Real-world evidence of tisagenlecleucel for pediatric acute lymphoblastic leukemia and non-Hodgkin lymphoma [published correction appears in *Blood Adv*. 2021;5(4):1136]. *Blood Adv*. 2020;4(21):5414-5424.
5. Aamir S, Anwar MY, Khalid F, Khan SI, Ali MA, Khattak ZE. Systematic review and meta-analysis of CD19-Specific CAR-T cell therapy in relapsed/refractory acute lymphoblastic leukemia in the pediatric and young adult population: safety and efficacy outcomes. *Clin Lymphoma Myeloma Leuk*. 2021;21(4):e334-e347.
6. Anagnostou T, Riaz IB, Hashmi SK, Murad MH, Kenderian SS. Anti-CD19 chimeric antigen receptor T-cell therapy in acute lymphocytic leukaemia: a systematic review and meta-analysis. *Lancet Haematol*. 2020;7(11):e816-e826.
7. Higgins JPT, Thomas J, Chandler J, et al. *Cochrane Handbook for Systematic Reviews of Interventions*. Hoboken, NJ: John Wiley & Sons; 2019
8. Page MJ, McKenzie JE, Bossuyt PM, et al. The PRISMA 2020 statement: an updated guideline for reporting systematic reviews. *BMJ*. 2021; 372(71):n71.
9. Shah BD, Ghobadi A, Oluwole OO, et al. KTE-X19 for relapsed or refractory adult B-cell acute lymphoblastic leukaemia: phase 2 results of the single-arm, open-label, multicentre ZUMA-3 study. *Lancet*. 2021;398(10299):491-502.
10. Moher D, Shamseer L, Clarke M, et al; PRISMA-P Group. Preferred reporting items for systematic review and meta-analysis protocols (PRISMA-P) 2015 statement. *Syst Rev*. 2015;4(1):1.
11. Grover P, Curran E, Muffly L, Veilleux O. A systematic review to study the outcomes and toxicities of chimeric antigen T cell therapy (CAR-T) in adults with B-acute lymphoblastic leukemia (B-ALL). Prospero. Available at: [https://www.crd.york.ac.uk/prospero/display\\_record.php?ID=CRD42021226121](https://www.crd.york.ac.uk/prospero/display_record.php?ID=CRD42021226121). Accessed 15 June 2021.
12. Grigor EJM, Fergusson DA, Haggart F, et al. Efficacy and safety of chimeric antigen receptor T-cell (CAR-T) therapy in patients with haematological and solid malignancies: protocol for a systematic review and meta-analysis. *BMJ Open*. 2017;7(12):e019321.
13. Gronsbell J, Hong C, Nie L, Lu Y, Tian L. Exact inference for the random-effect model for meta-analyses with rare events. *Stat Med*. 2020;39(3): 252-264.
14. Michael H, Thornton S, Xie M, Tian L. Exact inference on the random-effects model for meta-analyses with few studies. *Biometrics*. 2019;75(2): 485-493.
15. Dai H, Wu Z, Jia H, et al. Bispecific CAR-T cells targeting both CD19 and CD22 for therapy of adults with relapsed or refractory B cell acute lymphoblastic leukemia [published correction appears in *J Hematol Oncol*. 2020;13(1):53]. *J Hematol Oncol*. 2020;13(1):30.
16. Dai H, Zhang W, Li X, et al. Tolerance and efficacy of autologous or donor-derived T cells expressing CD19 chimeric antigen receptors in adult B-ALL with extramedullary leukemia. *Oncotarget*. 2015;4(11):e1027469.
17. Frey NV, Shaw PA, Hexner EO, et al. Optimizing Chimeric Antigen Receptor T-Cell Therapy for Adults With Acute Lymphoblastic Leukemia. *J Clin Oncol*. 2020;38(5):415-422.
18. Gu R, Liu F, Zou D, et al. Efficacy and safety of CD19 CAR T constructed with a new anti-CD19 chimeric antigen receptor in relapsed or refractory acute lymphoblastic leukemia. *J Hematol Oncol*. 2020;13(1):122.
19. Hay KA, Gauthier J, Hirayama AV, et al. Factors associated with durable EFS in adult B-cell ALL patients achieving MRD-negative CR after CD19 CAR T-cell therapy. *Blood*. 2019;133(15):1652-1663.
20. Hua J, Zhang J, Wu X, et al. Allogeneic donor-derived anti-CD19 CAR T cell is a promising therapy for relapsed/refractory B-ALL after allogeneic hematopoietic stem-cell transplantation. *Clin Lymphoma Myeloma Leuk*. 2020;20(9):610-616.
21. Hu Y, Wu Z, Luo Y, et al. Potent anti-leukemia activities of chimeric antigen receptor-modified T cells against CD19 in chinese patients with relapsed/refractory acute lymphocytic leukemia. *Clin Cancer Res*. 2017;23(13):3297-3306.
22. Jiang H, Li C, Yin P, et al. Anti-CD19 chimeric antigen receptor-modified T-cell therapy bridging to allogeneic hematopoietic stem cell transplantation for relapsed/refractory B-cell acute lymphoblastic leukemia: An open-label pragmatic clinical trial. *Am J Hematol*. 2019;94(10):1113-1122.
23. Li S, Zhang J, Wang M, et al. Treatment of acute lymphoblastic leukaemia with the second generation of CD19 CAR-T containing either CD28 or 4-1BB. *Br J Haematol*. 2018;181(3):360-371.
24. Ma Y, Zhang S, Fang H, Yu K, Jiang S. A phase I study of CAR-T bridging HSCT in patients with acute CD19<sup>+</sup> relapse/refractory B-cell leukemia. *Oncol Lett*. 2020;20(4):20.
25. Ortíz-Maldonado V, Rives S, Castellà M, et al. CART19-BE-01: A multicenter trial of ARI-0001 cell therapy in patients with CD19<sup>+</sup> relapsed/refractory malignancies. *Mol Ther*. 2021;29(2):636-644.
26. Park JH, Rivière I, Gonen M, et al. Long-term follow-up of CD19 CAR therapy in acute lymphoblastic leukemia. *N Engl J Med*. 2018;378(5):449-459.
27. Wang J, Mou N, Yang Z, et al. Efficacy and safety of humanized anti-CD19-CAR-T therapy following intensive lymphodepleting chemotherapy for refractory/relapsed B acute lymphoblastic leukaemia. *Br J Haematol*. 2020;191(2):212-222.
28. Wang N, Hu X, Cao W, et al. Efficacy and safety of CAR19/22 T-cell cocktail therapy in patients with refractory/relapsed B-cell malignancies. *Blood*. 2020;135(1):17-27.
29. Zhang C, Wang XQ, Zhang RL, et al. Donor-derived CD19 CAR-T cell therapy of relapse of CD19-positive B-ALL post allotransplant. *Leukemia*. 2021;35(6):1563-1570.

30. Lee DW, Gardner R, Porter DL, et al. Current concepts in the diagnosis and management of cytokine release syndrome [published correction appears in *Blood*. 2015;126(8):1048]. *Blood*. 2014;124(2):188-195.
31. Lee DW, Santomaso BD, Locke FL, et al. ASTCT consensus grading for cytokine release syndrome and neurologic toxicity associated with immune effector cells. *Biol Blood Marrow Transplant*. 2019;25(4):625-638.
32. National Cancer Institute, Division of Cancer Treatment and Diagnosis, Cancer Therapy Evaluation Program. Common Terminology Criteria for Adverse Events (CTCAE). Available at: [https://ctep.cancer.gov/protocoldevelopment/electronic\\_applications/ctc.htm](https://ctep.cancer.gov/protocoldevelopment/electronic_applications/ctc.htm). Accessed June 1, 2021
33. Porter D, Frey N, Wood PA, Weng Y, Grupp SA. Grading of cytokine release syndrome associated with the CAR T cell therapy tisagenlecleucel [published correction appears in *J Hematol Oncol*. 2018;11(1):81]. *J Hematol Oncol*. 2018;11(1):35.
34. Gökbuget N, Dombret H, Ribera JM, et al. International reference analysis of outcomes in adults with B-precursor Ph-negative relapsed/refractory acute lymphoblastic leukemia. *Haematologica*. 2016;101(12):1524-1533.
35. Oriol A, Vives S, Hernández-Rivas JM, et al; Programa Español de Tratamiento en Hematología Group. Outcome after relapse of acute lymphoblastic leukemia in adult patients included in four consecutive risk-adapted trials by the PETHEMA Study Group. *Haematologica*. 2010;95(4):589-596.
36. Kantarjian HM, DeAngelo DJ, Stelljes M, et al. Inotuzumab ozogamicin versus standard therapy for acute lymphoblastic leukemia. *N Engl J Med*. 2016;375(8):740-753.
37. Kantarjian H, Stein A, Gökbuget N, et al. Blinatumomab versus chemotherapy for advanced acute lymphoblastic leukemia. *N Engl J Med*. 2017;376(9):836-847.
38. Schultz LM, Baggott C, Prabhu S, et al. Disease burden impacts outcomes in pediatric and young adult B-Cell acute lymphoblastic leukemia after commercial tisagenlecleucel: results from the Pediatric Real World CAR Consortium (PRWCC) [abstract]. *Blood*. 2020;136(suppl 1):14-15.