

# Pediatric localized intestinal lymphangiectasia treated with resection

Judit Mari<sup>1</sup>  
Tamas Kovacs<sup>1</sup>  
Gyula Pasztor<sup>2</sup>  
Laszlo Tiszlavicz<sup>3</sup>  
Csaba Bereczki<sup>1</sup>  
Daniel Szucs<sup>1</sup>

<sup>1</sup>University of Szeged, Department of Pediatrics, Szeged, Hungary;

<sup>2</sup>University of Szeged, Department of Radiology, Szeged, Hungary;

<sup>3</sup>University of Szeged, Department of Pathology, Szeged, Hungary

**Introduction:** Primary intestinal lymphangiectasia (PIL) is a very rare disorder usually diagnosed before the third year of life or later in adulthood, presenting with pitting edema, hypoproteinemia and low immunoglobulin levels. The location and the extent of the affected bowel greatly influence the clinical manifestation. The localized or segmental form of PIL is extremely rare with only five pediatric cases reported worldwide.

**Case presentation:** A 10 year-old Caucasian boy presented with 3 months history of recurrent abdominal pain and a 1 month history of diarrhea. An ultrasound scan was performed on two separate occasions 10 days apart, revealing a growing cystic mass on the right side of the abdomen, in front of the psoas muscle. Subsequently an MRI scan confirmed that the mass originated from the mesenteries and infiltrates a short segment of the small bowel. Surgical resection of the affected segment was performed. Histopathological examination of the removed segment of ileum was consistent with intestinal lymphangiectasia. We could not identify any associated genetic syndromes or any other conditions that could have caused secondary intestinal lymphangiectasia. The patient's recovery from surgery was uneventful and no recurrence was observed in the following 4 years.

**Conclusion:** Despite being a benign condition, mortality of PIL can be as high as 13% due to the difficulties associated with the management of the disease. PIL should be considered as a rare but potential cause for an abdominal mass, even in the older child, when cystic mesenteric involvement might be seen on ultrasound or MRI. In selected cases of PIL affecting only a short segment of the bowel or following unsuccessful conservative treatment, surgical resection of the affected bowel segment can be curative.

**Keywords:** surgery, children, abdominal pain, abdominal mass, follow-up

## Introduction

Primary intestinal lymphangiectasia (PIL), also called as Waldman's disease is a rare disorder usually diagnosed before 3 years of age or later in adulthood<sup>1</sup> presenting with protein-losing enteropathy, hypoproteinemia and consequent clinical edema.<sup>2</sup> PIL is thought to be a congenital disorder with abnormal lymphatic drainage of the small bowel. The pathophysiology of the disorder is poorly understood. According to one of the proposed theories, lymphatic hypoplasia leads to obstruction of lymph flow of the intestines.<sup>3</sup> Several genes have been identified, which are responsible for lymphogenesis such as *VEGFR3*, *SOX18*, *FOXC2*, *CCBE1*.<sup>4</sup> PIL might present with a wide range of abnormal laboratory biochemical values and different symptoms based on the extent and exact location of the bowel segment involved. Histopathologic findings are

Correspondence: Judit Mari  
University of Szeged, Department of Pediatrics, 14-15 Koranyi Faszor, Szeged 6720, Hungary  
Tel +36 30 238 1420  
Fax +36 6 254 5330  
Email mari.judit@med.u-szeged.hu

characterized by the presence of lacteal juice, dilated mucosal and submucosal lymphatic vessels shown also in the serosa.<sup>1</sup>

The condition rarely presents in the older child and usually involves a larger bowel segment if not generalized. Localized form of PIL is extremely rare with only five pediatric cases reported in the literature.

The authors present a case of a 10-year-old boy, with abdominal pain, with a localized mass in front of the right psoas muscle involving the mesenteries, successfully treated with surgical resection.

## Case presentation

A 10-year-old boy presented to our outpatient clinic with abdominal pain. He reported recurrent epigastric pain for the past 3–4 months, which has increased in severity and frequency, thus prompting the parents to seek medical help. The patient also developed diarrhea during the last month prior to presentation. On closer questioning, he described awakening at night with pain, accompanied by sweating and extreme paleness during the painful episodes. The description of the symptoms was alarming, prompting further investigation.

On clinical examination he did not have specific findings: he was pale and his lower abdomen was tender and full. Routine full blood count and biochemistry revealed normal values apart from a slight normocytic anemia, the patient was found to have normal immunoglobulin levels. A subsequent abdominal ultrasound (US) showed an ~20–22 mm-wide band-like cystic mass stretching in front of the right psoas muscle and above the bladder. A follow-up US 10 days later, by the same radiologist identified a gross increase in the size of the abdominal mass, now dislocating the bowels and causing an obstruction (Figure 1). In order to specify the exact location, origin and nature of the mass, an abdominal MRI

scan was performed. Based on the imaging, we had a strong suspicion of dealing with a solid tumor originating from the retroperitoneal space or the mesenteries (Figure 2).

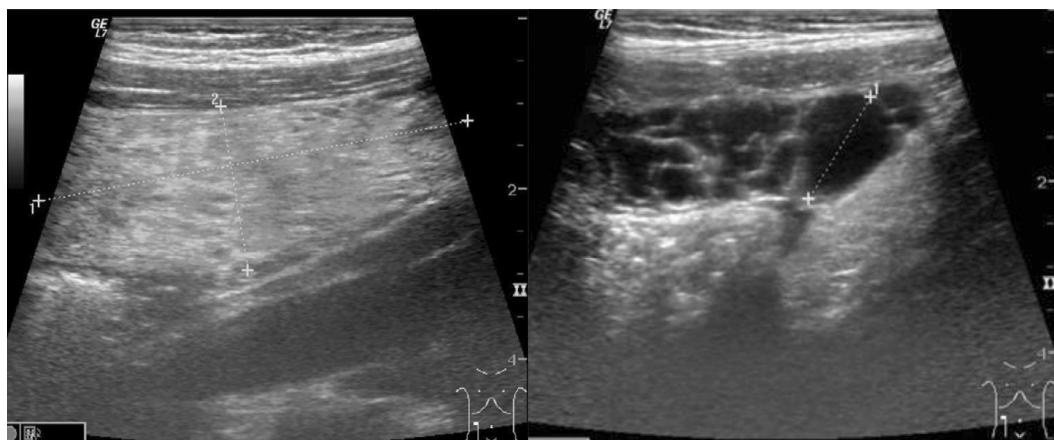
Pediatric surgeons performed a laparotomy. They located the mass to be in the middle part of the ileum and the attaching mesentery containing numerous cysts with localized infiltration of the bowel wall. A 30 cm long, macroscopically abnormal part of the ileum was resected. Pathologic examination was consistent with intestinal lymphangiectasia based on the dilated lymphatic system/vessels in the submucosa, subserosa and even in lamina propria (Figure 3). The edges of the resection line revealed normal histologic features.

Secondary causes of intestinal lymphangiectasia (IL) (eg, cardiac conditions, lymphoma, mesenteric tuberculosis, etc)<sup>5</sup> or associated conditions described in the literature (Noonan, Turner, Klippel-Trenaunay, Hennekam, von Recklinghausen syndrome)<sup>6</sup> were not identified. Family history was negative for PIL and also free of inherited disorders.

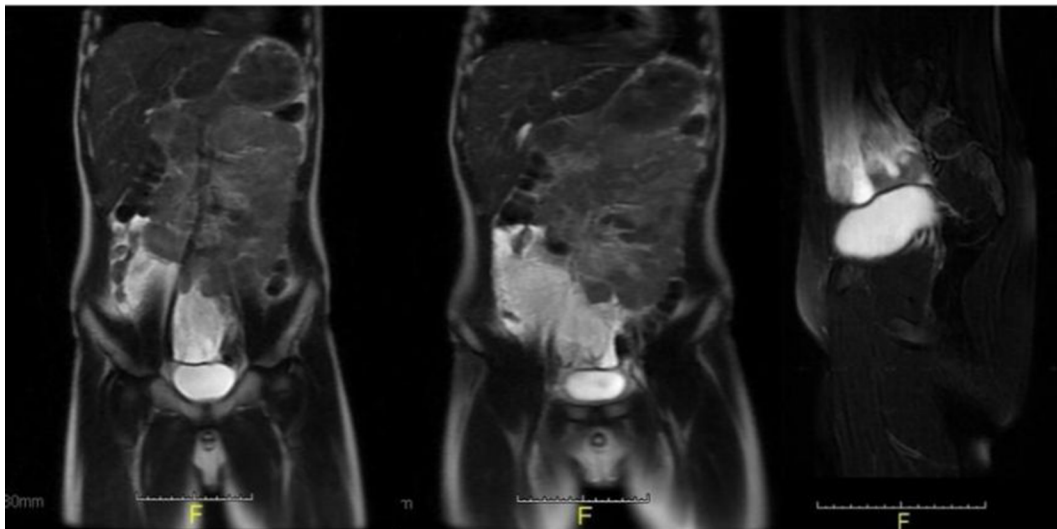
The early postoperative period was uneventful, and there were no complications. The patient's symptoms subsided, with no further signs of PIL during follow-ups for the next 4 years; he had only occasional abdominal symptoms for which he was started on proton pump inhibitor (PPI). Albumin and immunoglobulin levels stayed within normal range for his age. Serial abdominal USs have not revealed any signs of recurrence up to date.

## Discussion and conclusion

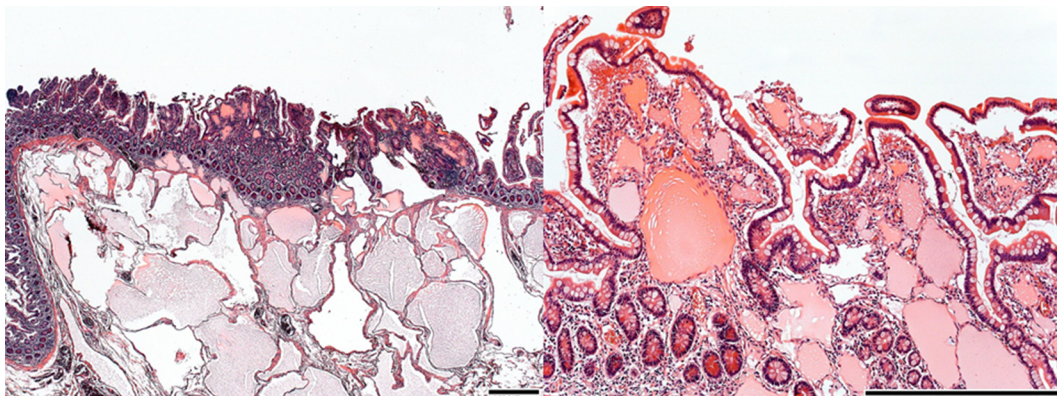
Although intestinal lymphangiectasia is a condition usually involving various lengths of the small bowel and presents with a protein-losing enteropathy,<sup>7</sup> there has been very few pediatric case reports about intestinal lymphangiectasia treated with bowel resection. Despite a thorough literature



**Figure 1** Band-like cystic mass seen on the follow-up ultrasound.



**Figure 2** MRI showed multilocular cystic mass involving the mesenteries.



**Figure 3** Microscopic picture showing typical changes for PIL: dilated lymphatics in subserosa, submucosa and lamina propria.

**Note:** Scale bars represent 500 $\mu$ m.

**Abbreviation:** PIL, primary intestinal lymphangiectasia.

search, we could only identify five cases of PIL treated surgically (Table 1). All patients were male, with the age at presentation ranging from 0 to 10 years. Two PIL cases presented in infancy, one of these diagnosed in utero. Only one patient had undergone surgery as a rescue treatment after unsuccessful conservative management. The remaining two patients presented as acute abdomen and recurrent abdominal pain similar to our case. Various investigation tools were used, radiation-free US and MRI preferable in children.<sup>13</sup> All patients are symptom free after surgery with various follow-up times (1 month to 6 years).

Interestingly, in our case, no signs or symptoms were present typical for PIL, like protein losing enteropathy and

consequent edema, low levels of albumin and immunoglobulins. According to our hypothesis typical signs were not present due to a very early diagnosis and because of the involvement of a short bowel segment (only 30 cm section of the ileum was affected)

Typical signs and symptoms are universally present in generalized/diffuse type of PIL<sup>1</sup> and in most of localized PIL cases.<sup>14</sup> Only two adult<sup>14</sup> and only one pediatric report<sup>10</sup> were similar to our case in view of normal biochemical values and absence of edema, all these patients presented acutely.

The principal treatment for PIL is mainly conservative: high-protein and low-fat diet with medium-chain-triglyceride supplementation, the dietary intervention being more

**Table 1** Pediatric localized PIL cases treated successfully with surgical resection.

Year of publication	Age	Sex	Ethnicity	Length of history	Presenting symptoms	Investigations/findings	Length/localization of bowel resected	Follow-up period—outcome
1998 Persić et al <sup>8</sup>	14 years	Male	Caucasian	13 years	Diarrhea, edema, low albumin/protein, left leg edema	18 Cr labeled albumin study: 18% recovery, lymphangiography: significant lymphatic obliteration in both legs	305 cm small bowel	6 years no diet - normal growth, no symptoms
2001 Uğuralp et al <sup>9</sup>	7 years	Male	Caucasian	4 years	Recurrent abdominal pain, diarrhea, vomiting, neck swelling (asymmetric)	CT: diffuse bowel wall thickening, blind biopsy: normal, laparotomy + biopsy: PIL	70 cm jejunioleal	1 year with diet—growth percentile increased, no symptoms
2008 Katoch et al <sup>10</sup>	6 months	Male	Indian	1 week	Abdominal pain, palpable mass, intussusception	None	7 cm	None
2009 Kim et al <sup>11</sup>	8 years	Male	Korean	3 months	Acute abdomen, vomiting, diarrhea, generalized edema	Upper/lower endoscopy + biopsy: petechiae in small bowel, otherwise normal	150 cm (107+26+17) jejunioleal	10 years no diet—normal growth normal lab values
2017 Mitsiakos et al <sup>12</sup>	2 days	Male	Caucasian	IU diagnosed	None	US: multilocular cystic mass, MRI: multiple cystic lesion of the mesentery	~10 cm jejunioleal	1 month no diet—no symptoms
2018	10 years	Male	Caucasian	3 months	Recurrent abdominal pain, diarrhea	US: band like cystic mass, MRI: multilocular cystic mass involving the mesenteries	30 cm ileum	4 years no diet—normal growth, normal lab values

**Note:** Result of the literature search: pediatric localized PIL treated with resection.

**Abbreviations:** CT, computed tomography; IU, intrauterine; MRI, magnetic resonance imaging; US, ultrasound; PIL, primary intestinal lymphangiectasia.

effective in children than in adults.<sup>15</sup> In addition to diet, supportive measures (albumin infusion, total parenteral nutrition) are usually needed, especially in nonresponders. Further pharmacological treatment includes octreotide and tranexamic acid, their beneficial effect proven by several case reports.<sup>2</sup>

In the treatment algorithm of PIL surgical intervention is only reserved for localized or therapy-refractory cases. Most of the reported “successfully treated by surgical resection” PIL cases, like ours, are diagnosed intraoperatively/postoperatively.

Whether surgical treatment should be considered in an earlier phase of the treatment process, would need bigger numbers and further investigation.

Four years following surgery, the patient is symptom-free with normal biochemical values. Close ultrasound and laboratory monitoring showed no further abnormalities; at present we believe that surgery was curative in our case.

1. Localized IL diagnosed at early stage can present with normal albumin and immunoglobulin levels.
2. Surgical removal of the affected bowel segment could be curative, with close monitoring of the biochemical values and surveillance with abdominal US.
3. Pediatric ultrasound may be a useful, noninvasive tool to lead to the diagnosis of IL and also play a role as a radiological surveillance tool for recurrence.
4. Based on the index cases resection of the affected bowel segment might be considered at an early stage in the treatment algorithm of pediatric PIL.
5. Although more than 90% of chronic abdominal pain in pediatric population is diagnosed as functional after evaluation, on rare occasions extraordinary diagnoses can be made based on radiologic and histologic findings; therefore, we think that the rare diagnosis of IL should be considered when dealing with chronic, recurrent abdominal pain with warning symptoms.

## Consent for Publication

Written informed consent was obtained from the patient's parents to publish this case report and any accompanying images. According to the standard of operating procedure of the Institutional Review Board of our University (SZTE University, Szeged, Hungary), publishing a case report is exempted from the board review.

## Acknowledgments

The authors thank Krisztian Sisak gratefully for revising the manuscript. The authors also thank the patient's family for their understanding and cooperation.

## Disclosure

The authors report no conflicts of interest in this work.

## References

- Vignes S, Bellanger J. Primary intestinal lymphangiectasia (Waldmann's disease). *Orphanet J Rare Dis*. 2008;3(1):5.
- Alshikho MJ, Talas JM, Noureldine SI, et al. Intestinal lymphangiectasia: insights on management and literature review. *Am J Case Rep*. 2016;17:512–522.
- Levine C. Primary disorders of the lymphatic vessels—a unified concept. *J Pediatr Surg*. 1989;24(3):233–240.
- Hokari R, Kitagawa N, Watanabe C, et al. Changes in regulatory molecules for lymphangiogenesis in intestinal lymphangiectasia with enteric protein loss. *J Gastroenterol Hepatol*. 2008;23(7 Pt 2): e88–e95.
- Levitt DG, Levitt MD. Protein losing enteropathy: comprehensive review of the mechanistic association with clinical and subclinical disease states. *Clin Exp Gastroenterol*. 2017;10:147–168.
- Hennekam RC, Geerdink RA, Hamel BC, et al. Autosomal recessive intestinal lymphangiectasia and lymphedema, with facial anomalies and mental retardation. *Am J Med Genet*. 1989;34(4):593–600.
- Freeman HJ, Nimmo M. Intestinal lymphangiectasia in adults. *World J Gastrointest Oncol*. 2011;3(2):19–23.
- Persić M, Browse NL, Prpić I. Intestinal lymphangiectasia and protein losing enteropathy responding to small bowel restriction. *Arch Dis Child*. 1998;78(2):194.
- Uğuralp S, Mutus M, Kutlu O, Cetin S, Baysal T, Mizrak B. Primary intestinal lymphangiectasia: a rare disease in the differential diagnosis of acute abdomen. *J Pediatr Gastroenterol Nutr*. 2001;33(4): 508–510.
- Katoch P, Bhardwaj S. Lymphangiectasia of small intestine presenting as intussusception. *Indian J Pathol Microbiol*. 2008;51(3):411–412.
- Kim NR, Lee SK, Suh Y-L. Primary intestinal lymphangiectasia successfully treated by segmental resections of small bowel. *J Pediatr Surg*. 2009;44(10):13–17.
- Mitsiakos G, Drogouti E, Drogouti M, Doitsidis C, Pazarli E, Spyridakis I. Congenital intestinal lymphangiectasia. A case report. *J Pediatr Neonatal Individ Med*. 2018;7(1):070106.
- Malone LJ, Fenton LZ, Weinman JP, Anagnost MR, Browne LP. Pediatric lymphangiectasia: an imaging spectrum. *Pediatr Radiol*. 2015;45(4):562–569.
- Huber T, Paschold M, Eckardt AJ, Lang H, Kneist W. Surgical therapy of primary intestinal lymphangiectasia in adults. *J Surg Case Rep*. 2015;2015(7):rjv081.
- Wen J, Tang Q, Wu J, Wang Y, Cai W. Primary intestinal lymphangiectasia: four case reports and a review of the literature. *Dig Dis Sci*. 2010;55(12):3466–3472.

International Medical Case Reports Journal

Publish your work in this journal

The International Medical Case Reports Journal is an international, peer-reviewed open-access journal publishing original case reports from all medical specialties. Previously unpublished medical posters are also accepted relating to any area of clinical or preclinical science. Submissions should not normally exceed 2,000 words or

Submit your manuscript here: <https://www.dovepress.com/international-medical-case-reports-journal-journal>

4 published pages including figures, diagrams and references. The manuscript management system is completely online and includes a very quick and fair peer-review system, which is all easy to use. Visit <http://www.dovepress.com/testimonials.php> to read real quotes from published authors.

Dovepress