



# Epidemiology and Survival of Colorectal Cancer in Lebanon: A Sub-National Retrospective Analysis

Cancer Control  
Volume 28: 1–8  
© The Author(s) 2021  
Article reuse guidelines:  
[sagepub.com/journals-permissions](https://sagepub.com/journals-permissions)  
DOI: 10.1177/10732748211041221  
[journals.sagepub.com/home/ccx](https://journals.sagepub.com/home/ccx)  


Rajaa Chatila, MD<sup>1</sup>, Joseph Mansour, MD<sup>1</sup>, Anas Mugharbil, MD<sup>2</sup>, Ghazi Nsouli, MD<sup>3</sup>, Lana O'Son, MD<sup>1</sup>, Edouard Sayad, MD<sup>1</sup>, and Mary E. Deeb, PhD<sup>4</sup> 

## Abstract

**Background:** Scarce data exist about colorectal cancer (CRC) presentation and outcomes in Lebanon. The aim of this study is to describe the characteristics of Lebanese patients diagnosed with colorectal cancer, particularly the method of detection, age of onset, stage at presentation, treatment modalities, and survival.

**Methods:** This is a retrospective study of a cohort of patients with CRC, diagnosed between 2005 and 2010, admitted to 6 major university-affiliated medical centers in Lebanon.

**Results:** The total sample consisted of 586 patients (median age: 64 years; M:F ratio: 1.25). The most common presenting symptoms were changes in bowel habits, abdominal pain, and blood per rectum. Only 3% had been diagnosed by screening colonoscopy. Of the patients diagnosed with CRC younger than 50 years of age, 72.5% had a positive family history ( $P = .07$ ). More than two-thirds of patients had an advanced stage of the disease III and IV at presentation. The Kaplan–Meier–estimated survival rate was 0%, 44.5%, 70.2%, and 78.5% for those with stage IV, III, II, and I, respectively ( $P = .0001$ ), and did not vary by age nor gender of the patient. There was no differential in survival estimate for patients with stage II and III by number of chemotherapy cycles received. However, there was a significant difference in median survivorship for patients with metastatic stage IV disease; those who received less than or equal to 9 cycles had a median survivorship of 2 years (CI: 1.31–2.68) compared to 4 years (CI: 2.36–5.63) for those who received more than 9 cycles ( $P = .047$ ). The cox regression showed while controlling for age and gender that patients diagnosed at stage IV had a hazard ratio of 8.81 (3.20–24.22) compared to those who were diagnosed at stage I ( $P = .047$ ).

**Conclusions:** Lebanese patients affected by colorectal cancer tend to present with advanced disease stages, leading to poor prognosis and survival.

## Keywords

colorectal cancer, Lebanon, epidemiology, risk factors, survival analysis, Kaplan–Meier survival analysis

<sup>1</sup>Gilbert and Rose-Marie Chagoury School of Medicine, Lebanese American University Medical Center-Rizk Hospital, Beirut, Lebanon

<sup>2</sup>Makassed General Hospital, Beirut, Lebanon

<sup>3</sup>Rafik Hariri University Hospital, Beirut, Lebanon

<sup>4</sup>Lebanese American University (LAU), Beirut, Lebanon

## Corresponding Author:

Mary E. Deeb, Associate Professor of Epidemiology and Biostatistics Gilbert and Rose-Marie Chagoury School of Medicine Lebanese, American University (LAU), P.O. Box: 36, Beirut 11022801, Lebanon. Email: [mary.deeb@lau.edu.lb](mailto:mary.deeb@lau.edu.lb)



Creative Commons Non Commercial CC BY-NC: This article is distributed under the terms of the Creative Commons Attribution-NonCommercial 4.0 License (<https://creativecommons.org/licenses/by-nc/4.0/>) which permits non-commercial use, reproduction and distribution of the work without further permission provided the original work is attributed as specified on the SAGE and

Open Access pages (<https://us.sagepub.com/en-us/nam/open-access-at-sage>).

## Background

Colorectal cancer (CRC) is one of the most common cancers worldwide, with higher incidence in developed countries (60% of reported incident cases). CRC is more common among men than women (rate ratio: 1.4:1).<sup>1</sup> Survival from CRC depends on the stage of disease at diagnosis and response to treatment.<sup>2</sup> CRC has a 5-year survival rate exceeding 90% for stage I, as opposed to less than 15% for stage IV, a clear testimony to the importance of early detection. Despite the relatively high survival rate, CRC is the second-to-third leading cause of cancer-related deaths in developed countries such as the United States.<sup>3,4</sup> Surgery is one of the important modes of treatment, including primary colorectal resection as well as resection of metastatic lesions from liver and/or lungs, along with neoadjuvant and adjuvant chemo- and radiotherapy.<sup>5,6</sup>

Lebanon is a Middle Eastern middle-income country with a population of about four million that experienced a protracted civil war for almost two decades, from 1975–1990.<sup>7</sup> Collection of demographic and surveillance data in Lebanon has long been impeded by political and organizational obstacles. The National Cancer Register (NCR), established in 1995, did not become operational until 2002. Notifications of cancer cases became mandatory through a passive system where the diagnosing physician routinely completes and forwards a standard form to the NCR. Data collected through passive reporting are complemented by active collection of case reports gathered from histopathology and hematology laboratories. NCR annual reports typically rank this type of cancer second in women after breast cancer and fourth in men. On average, 630 new cases of CRC are diagnosed annually, with a slow upward trend noted since the inception of the NCR.<sup>8</sup> Colorectal cancer in Lebanon ranks second among all cancers: fourth in men after prostate, lung, and bladder cancer, and second among women after breast cancer. The age-adjusted incidence rate for CRC was 25.1 for men and 20.6 for women per 100,000. In 2015, CRC constituted 16.9% of all registered incident cases of cancer in Lebanon, 55.6% among males and 44.4% among females. The mean age of diagnosis was 61.5 years among men and 62.9 years among women.

Data on the stage of CRC at presentation, quality of life after diagnosis, and survival or outcome are lacking from Lebanon's NCR. The Lebanese Ministry of Health (MOH) has recently published national guidelines for early detection of CRC, based primarily on non-invasive fecal immunological assays, leading to a subsidized system for comprehensive care of CRC patients.<sup>9</sup>

The aim of this study is to describe the characteristics of Lebanese patients diagnosed with CRC and their continuum of care through treatment modalities to survival or death. The effect of demographic characteristics and stage at presentation on the survival of CRC patients has been assessed. This epidemiological analysis and the computation of survival rates presented here are done for the first time in Lebanon. It will

provide vital data needed to support the recent screening recommendation, not yet implemented across the board in Lebanon, and to advance policies on reimbursement and treatment cost for future years. This may also serve as benchmarks for similar research in the neighboring Arab countries.

## Methods

### Study Design and Sampling

This is a retrospective study of a series of CRC patients diagnosed between 2005 and 2010 in six major hospitals in Lebanon who agreed to participate in the study. Four hospitals are located in the capital city Beirut: The Lebanese American University Medical Center-Rizk Hospital (LAUMC-RH), Rafic Hariri University Hospital (RHUH), Makassed General Hospital (MGH), and St George Hospital (SGH). These four hospitals are major university referral centers from all over Lebanon with high admission loads. RHUH is the largest public-funded hospital in Lebanon; referrals to RHUH are about 40% from greater Beirut, 25% from the South, and 15% from the North. There are two regional hospitals: Centre Hospitalier du Nord (CHN) has a catchment area from North Lebanon, and in Hammoud Hospital (HH) located in the southern city of Sidon, referrals are mainly from the southern part of Lebanon. This set of hospitals is believed to provide care for at least 50% of the prevalent caseload of CRC patients in Lebanon. This estimate is based on the proportion out of the total number of CRC cases reported by the Lebanese NCR.<sup>8</sup>

The study-retrieved charts of all inpatients with ICD-10 diagnostic codes C18–C20, which cover colon, recto sigmoid, and rectal cancers. The paper charts of the above-identified cases were reviewed in order to select eligible patients who fulfilled the following study inclusion criteria:

### 1. Charts Started in the Period 2005–2010

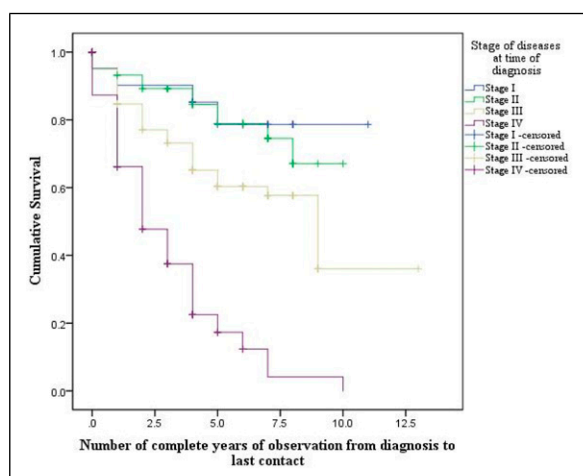
### 2. Primary Cancer Histologically Confirmed

3. *Cancer Invasive at Diagnosis.* Data planned for retrieval from the medical records included patient characteristics (demographic data, prior personal and family medical history), disease characteristics (site, pathology, and clinical stage), management (surgery, chemotherapy agents, and radiotherapy), and outcomes (recurrence, follow-up, and disease-free survival).

The research team contacted all patients not reported as dead in the clinical chart in 2015 to inquire about their survival status. The treating physician secured an oral consent in Arabic from each respondent at the time of the first follow-up phone call. The study proposal was approved by the Lebanese American University (LAU) Institutional Review Board (IRB), as well as the IRBs of all participating hospitals.

**Table 1.** Colorectal Cancer Cases from selected Hospitals in Lebanon (2005–2010) (N = 586 cases).

Variable	N	%
Gender		
Male	327	55.8
Female	259	44.2
Age at diagnosis (years)		
≤ 40	36	6.3
41–50	65	11.4
51–60	136	23.9
> 60	333	58.4
Past medical history	5	.8
Inflammatory bowel disease	41	12.0
Other cancers		
Family history of colorectal cancer	33	44.5

**Figure 1.** Survival curves by stage of diseases at time of diagnosis.

### Statistical Analysis

All analyses were conducted using the Statistical Package for Social Sciences (SPSS; version. 27). Categorical variables were presented as frequencies and percentages, and continuous variables as means, medians, and standard deviations (SD). The chi-square test was used to assess differences in proportions of categorical variables. Survival curves were generated using the Kaplan–Meier method, using the log-rank test to assess differences in survival between various subgroups. Statistical significance was set at  $P$ -value  $\leq .05$ . Multivariate analysis was performed using the Cox hazard regression model.

## Results

### Demographic Characteristics

A total number of 586 medical records of eligible CRC patients were retrieved. The average age of onset was 62.9 years

(SD: 13.9). Of the total sample, 15.6% ( $n = 89$ ) were 50 or less at time of diagnosis and 41.6% were 60 or less. Men were represented more (55.8%) than women (44.2%). A CRC family history was reported in 48.5% of cases (Table 1). A positive family history was defined as having an immediate family member (i.e., parents, siblings, and first-degree relatives) who has been diagnosed with cancer. Of the patients diagnosed with CRC younger than 50 years of age, 72.5% had a positive family history ( $P = .07$ ).

### Clinical Characteristics

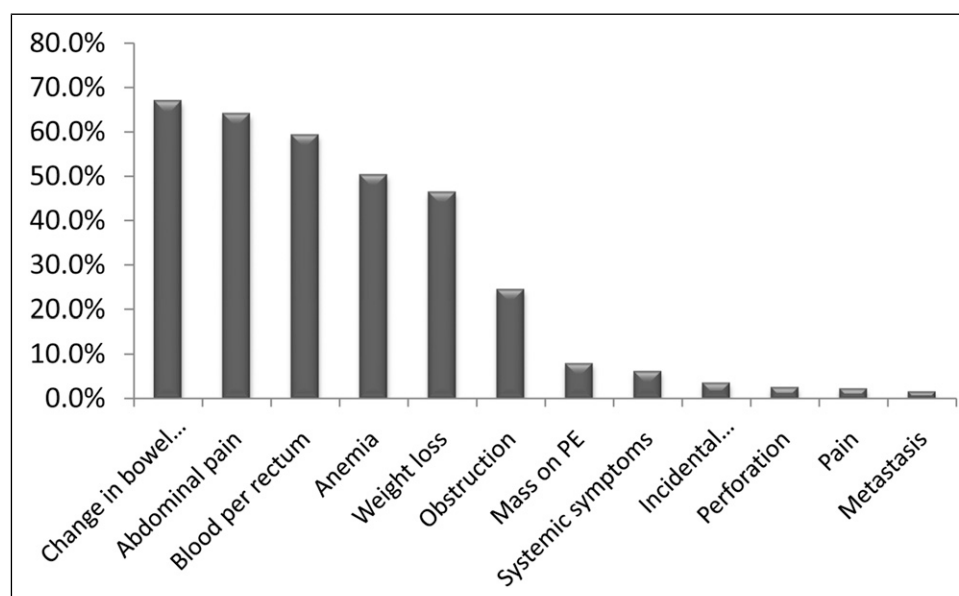
The number of patients with rectal cancers was 83 out of the total sample of patients. Table 1 shows that 41 patients reported to have had other cancers; among those, only 19 patients had the type of other cancer specified in their medical chart. The cancer types recorded included leukemia, breast, lung, prostate cancer, and one case of cholangiocarcinoma.

The most frequently reported presenting symptom was “change in bowel habits” followed by abdominal pain and blood per rectum (Figure 1). The most frequent site of involvement was the sigmoid (35.6%), followed by the rectum (25%). Histological confirmation was done via colonoscopic biopsies (92.7%) or CT-guided biopsy (4.7%). Diagnosis following incidental colonoscopy was reported among only 3% of CRC patients (Figure 2).

Tumor differentiation by TNM clinical classification showed that 6.2% of patients had stage I CRC ( $n = 23$ ); 20.6%, stage II ( $n = 77$ ); 36.6%, stage III ( $n = 137$ ); and 36.6%, stage IV ( $n = 137$ ). Primary metastases were observed among 35.1% of the patients at the time of diagnosis. About 60 patients underwent a KRAS testing as this test had not been introduced in Lebanon until 2008. Of those with test results, 39 had a wild gene and 13 a mutated gene. Complete pathological characteristics of the tumors were not uniformly entered in all the medical records. Vascular invasion was mentioned in 35.5% out of 366 records, micro-perforation in 47% out of 340 records, and positive surgical margins in 5% out of 358 records.

### Management Modalities

Surgical resection was performed for 75% of patients and metastasectomy, in only 25 patients. Curative surgery was performed in only 13.4% of patients, in contrast to the vast majority for whom additional treatments were prescribed. Neoadjuvant chemotherapy was done for 15.5% and adjuvant post-op chemotherapy, for 61.5% of the patients. Folfox, Folfiri and Folfoxiri were the most frequent chemotherapy regimen used, administered in cycles (Table 2). The optimal number of treatment cycles by disease stage was obtained by following the protocol recommendation of Grothey et al.’s<sup>10</sup>



**Figure 2.** Distribution of presenting symptoms for colorectal cancer among all patients.

**Table 2.** Treatment of Colorectal Cancer Patients Diagnosed in Selected Hospitals in Lebanon (2005–2010).

	N	% of Total
Radiotherapy		
Before surgery	69	15.5
After surgery	27	6.1
None	348	78.4
Neoadjuvant chemotherapy	73	15.5
Adjuvant/post-op chemotherapy	289	61.5
Primary chemotherapy	116	27.4
Second line chemotherapy	86	21.4
Biological therapy		
Bevacizumab	60	18.6
Cetuximab	19	5.9
Both	20	6.2
None	223	69.3
Surgery as sole therapy	79	13.4

article. The recommended number of cycles for patients with stage II and III was less or equal to 4 compared to more than 4 cycles, and for metastatic stage IV patients, the cut-off point of less or equal 9 compared to more than 9 cycles was adopted. In 30% of patients, biological therapy with bevacizumab, cetuximab, or both were used. Radiation was used in 22% of patients mostly pre-operatively.

### Survival Analysis

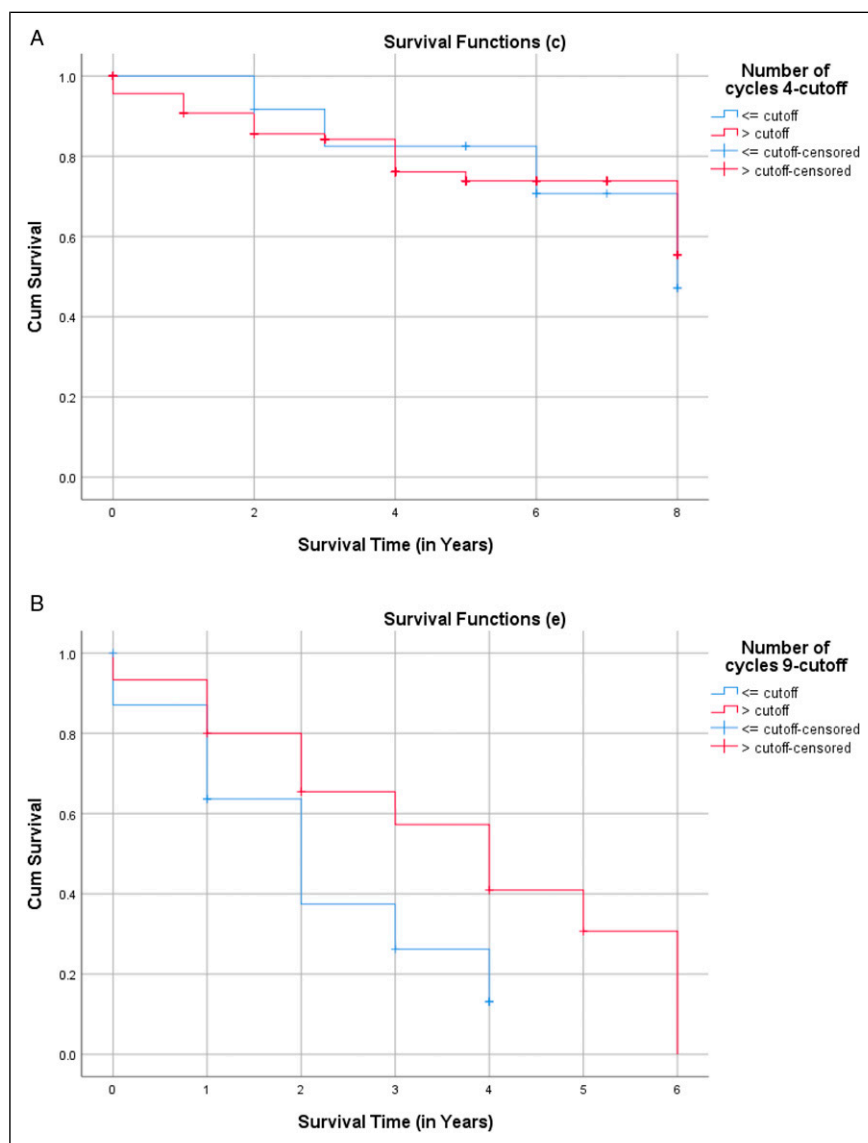
The median follow-up for our CRC patient cohort was 6 years with a 95% confidence interval of (4.61–7.38). The

overall survival was 23.8% within a 10-year follow-up period, with significant differences related to the tumor stage at time of diagnosis. Survivorship with stage IV was 0%, 44.5% with stage III, 70.2% with stage II, and 78.5% with stage I ( $P$ -value < .001). The mean survival time in years was 8.37 for stage I, 7.35 for stage II, 5.94 for stage III, and 2.3 for stage IV (Figure 1). There was no significant difference in the survival rates by age nor gender of the patient.

The relationship between receiving the optimal number of cycles for adjuvant or neoadjuvant therapy and CRC survival rates by disease stage was also explored. For patients categorized as stage II and III, there was no significant difference in median survival by number of cycles using as a cut-off point less or equal to 4 (median 6.8 years CI (5.39–8.22)) and more than 4 cycles (median 6.53 years CI (5.94–7.13);  $P$ -value = .935). (Figure 3A).

For patients with metastatic cancer stage IV, there was a significant difference in median survival by number of cycles using as a cutoff point less or equal to 9 [median 2 years CI (1.31–2.68)] and more than 9 cycles [median 4 years CI (2.36–5.63)];  $P$ -value = .047 (Figure 3B).

Cox regression showed that after controlling for gender and age, those who were diagnosed at stage I had a hazard ratio of 1.29 (.42–3.99),  $P$ -value .663 compared to those who were at stage 1. Patients with stage III had a hazard ratio of 2.66 (.96–7.141) with a borderline significance  $P$  = .061. There was a highly significant relationship ( $P$  = .000) for those diagnosed at stage IV with a hazard ratio of 8.81 (3.20–24.22) compared to those who were diagnosed at stage I. (Table 3).



**Figure 3. (A)** Survival curves by number of treatment cycles for patients with stage II and III. **(B)** Survival curve by number of treatment cycles for patients with stage IV.

**Table 3.** Hazard Ratio (HR) of the Probability of Dying by Stage of Colorectal Cancer, Gender, and Age of the Patient.

Variable	Unadjusted HR	95% CI	P-value	Adjusted HR	95% CI	P-value
Stage I	Reference					
Stage 2	1.20	.39–3.74	.743	1.29	.42–3.99	.663
Stage 3	2.58	.92–7.19	.069	2.66	.96–7.41	.061
Stage 4	8.47	3.08–23.29	.000*	8.81	3.20–24.22	.000*
Female	Reference					
Male	.96	.73–1.27	.803	1.09	.78–1.53	.609
Age (years)	1.00	.99–1.01	.606	1.01	.99–1.02	.406

\*Significant P-values.



## Discussion and Conclusions

CRC incidence in Lebanon is expected to increase due to the slow aging of the population.<sup>11-13</sup> The disease presents with few differences in Lebanon compared to more advanced nations. The disease occurrence in men is similar to what has been reported in the United States and worldwide.<sup>1</sup> The relative annual proportion of CRC in Lebanon is similar to the USA ( $\approx 8\%$  of all incident cancers). However, the average age at diagnosis is significantly younger in Lebanon compared to the United States. The average age at diagnosis for men is 68 and for women is 72 in the United States, while in Lebanon, it is 65 in females and 66 in male. CRC can occur in young adults and teenagers, but the majority of CRC occur in people older than 50. Recent studies are showing that the CRC incidence rate for ages 20–49 was 9.3 per 100,000 in 1975 and now is up to 13.7 per 100,000 in 2015, a percentage change of 47.3%, whereas incidence rates in age groups 50 years and above have steadily decreased.<sup>14,15</sup> Cases among those less than 60 years old represent 10% of the US cases vs more than 40% in Lebanon.<sup>3,8</sup> This can be largely attributable to the younger-age distribution of the population in Lebanon.<sup>7</sup> However, differences in cultural and lifestyle risk factors should also be explored.<sup>16,17</sup> On the other hand, age-specific incidence rates show that the peak is in fact reached later than elsewhere.<sup>8</sup> This is probably linked to the traditional Lebanese diet, rich in fibers and anti-oxidants and the calcium-rich hard drinking water predominant in the country, two protective factors contributing to delaying progress to CRC.<sup>18</sup> Those factors should be actively maintained, while risk factors, such as sedentary lifestyles, obesity, and increased daily intake of red meat, should be prevented and controlled.<sup>19,20</sup>

The current study indicated that sex and age at diagnosis did not affect the survival outcome. Findings confirmed that the stage at diagnosis is a major determinant of better prognosis. Data from the US published in 2018 by the American Cancer Society show that the 5-year survival rate of people with localized stage colorectal cancer is 90%. About 39% of patients are diagnosed at this early stage. If the cancer has spread to surrounding tissues or organs and/or regional lymph nodes, the 5-year survival rate is 71%. If the cancer has spread to distant parts of the body, the 5-year survival rate is 14%. However, for patients who have just one or a few tumors that have spread from the colon or rectum to the lung or the liver, surgical removal of these tumors can eliminate the cancer, which greatly improves the 5-year survival rate for these patients.<sup>20</sup>

Of concern in our data from Lebanon is that about 75% of cases are seen initially at already advanced stages, which automatically reduces their survival likelihood, especially if the treatment is not very aggressive. There is *some* evidence in the literature regarding the beneficial effects of aggressive chemotherapy and surgical management.<sup>21</sup> In this analysis, metastasectomy to treat the metastasis to the lungs or the liver was rarely performed. Reasons for under-performance may

include lack of clear national guidelines and possibly lack of awareness among practitioners regarding the positive impact of such an intervention on the disease prognosis. It should be noted that the management of cancers in Lebanon is not subject to local guidelines and often relies on the NCCN, ASCO, or ESMO guidelines.

There are several limitations to our study inherently related to the retrospective nature of the data collection. The main limitation of the study regarding the overall survival of CRC patients in Lebanon is that the specific characteristics of type of treatment, adverse effects, and lines used, as well as the pathological characteristics of the tumors<sup>22</sup> in different hospitals were not consistently recorded in all the medical charts. This is a main drawback of retrospective data; however, it is worth noting that the type of cancer treatment is pretty uniform in the hospitals included in our review. Actually, oncologists affiliated to teaching hospitals in Lebanon do follow the same protocol for CRC treatment. Moreover, the Lebanese Ministry of Public Health is the main distributor and provider of cancer medication in the country. The strength of this study includes the adequate follow-up to ascertain the survival status of the patient and detailed information on cancer stage. Our study also contributes to the scarce follow-up literature on CRC survival in Lebanon and the Arab countries.

In conclusion, the cost of covering invasive confirmatory tests such as colonoscopy must be weighed against the increasing costs of anti-cancer drugs in general and with more severe stages in particular.<sup>23</sup> Similarly, the adoption of a national set of treatment modalities including the number of chemotherapy cycles for those with locally advanced disease stage II and III vs metastatic disease stage will undoubtedly contribute to a better prognosis of CRC patients in Lebanon.

## Appendix

### Abbreviations

BMI	body mass index
CI	95% confidence interval
CHN	Centre Hospitalier du Nord
CRC	colorectal cancer
HR	hazard ratio
IRB	institutional research board
LAUMC-RH	Lebanese American University Medical Center-Rizk Hospital
MGH	Makassed General Hospital
NCR	The National Cancer Registry
RHUU	Rafic Hariri University Hospital

### Acknowledgments

We are very grateful to Mr. Abed Sabra from Roche International for his kindness and constant support. Our special thanks for Dr. Roger Khater, Dr. Fadi Farhat, Dr. Nabil Chamseddine, and Dr. Walid Moukadem for their contribution to data acquisition from their respective hospital records. We acknowledge with gratitude the effort

of Ms. Mariana Salamoun in data entry and data analysis. We are also extremely grateful for the valuable contribution of Ms. Sarah Assad to survival data analysis.

### Author Contributions

All authors listed have contributed sufficiently to the project to be included as authors, and all those who are qualified to be authors are listed in the author byline. RC and MD contributed to the study conception and design; RC, JM, AM, GN, LN, ES, and MD contributed to data collection, data analysis, and interpretation and writing of the article; MD performed and supervised all the statistical analysis; all authors contributed to editing, reviewing, and final approval of the article.

### Declaration of Conflicting Interests

The author(s) declared no potential conflicts of interest with respect to the research, authorship, and/or publication of this article.

### Funding

The author(s) disclosed receipt of the following financial support for the research, authorship, and/or publication of this article: F. Hoffman-La Roche funded the research. The funding body was not involved in the design or conduct of the study, collection, management, analysis or interpretation of data, preparation, or review of the article.

### Ethical Approval and Consent to Participate

The follow-up data on CRC patients survival status were collected through phone calls by the authors of the articles as interviewers, and data were gathered only from those who consented orally. The Lebanese American University Institutional Review Board (IRB) committee reviewed and approved the study. The article entails original research and has not been submitted / published earlier in any journal and is not being considered for publication elsewhere. The article has been submitted with full responsibility, following due ethical procedure, and there is no duplicate publication, fraud, plagiarism, or concerns about animal or human experimentation.

### Consent for Publication

Not applicable

### Data Availability

The data set used and analyzed during the current study is available from the corresponding author on reasonable request.

### ORCID iD

Mary E. Deeb  <https://orcid.org/0000-0002-4650-9967>

### References

1. Bray F, Ferlay J, Soerjomataram I, Siegel RL, Torre LA, Jemal A. Global cancer statistics 2018: GLOBOCAN estimates of incidence and mortality worldwide for 36 cancers in 185 countries. *CA A Cancer J Clin*. 2018;68(6):394–424. doi:10.3322/caac.21492.
2. Luo Y, Cui J, Chen C, et al. Clinical outcomes after surgical resection of colorectal cancer in 1,294 patients. *Hepato-Gastroenterology*. 2012;59(117):1398-1402.
3. Henley SJ, Ward EM, Scott S, Ma J, Anderson RN, Firth AU, et al. Annual report to the nation on the status of cancer, part I: National cancer statistics, *Cancer*. 2020;126:2225-2249 doi:10.1002/cncr.32802.
4. Henley SJ, Thomas CC, Lewis DR, et al. Annual report to the nation on the status of cancer, part II: Progress toward Healthy People 2020 objectives for 4 common cancers. *Cancer*. 2020; 126:2250-2266. doi:10.1002/cncr.32801.
5. Mahmoud N, Bullard Dunn K. Metastectomy for stage IV colorectal cancer. *Dis Colon Rectum*. 2010;53(7):1080-1092.
6. Kopetz S, Chang GJ, Overman MJ, Eng C, Sargent DJ, Larson DW, et al. Improved survival in metastatic colorectal cancer is associated with adoption of hepatic resection and improved chemotherapy. *J Clin Oncol*. 2009;27(22):3677-3683.
7. The Demographic Profile of Lebanon. Available: [https://www.unescwa.org/sites/www.unescwa.org/files/lebanon\\_2017-single\\_pages\\_jan\\_8.pdf](https://www.unescwa.org/sites/www.unescwa.org/files/lebanon_2017-single_pages_jan_8.pdf)
8. National Cancer Registry, Surveillance Unit, Ministry of Public Health, Republic of Lebanon. Available at: <https://www.moph.gov.lb>.
9. Ministry of Public Health, Republic of Lebanon. National Guidelines for Colorectal Cancer Early Detection. 2019.
10. Grothey A, Sobrero AF, Shields AF, et al. Duration of adjuvant chemotherapy for stage iii colon cancer. *N Engl J Med*. 2018; 378(13):1177-1188. doi:10.1056/NEJMoa1713709.
11. Shamseddine AI, Musallam KM. Cancer epidemiology in Lebanon. *Middle East J Cancer*. 2010;1(1):41-44.
12. Shamseddine A, Saleh A, Charafeddine M, et al. Cancer trends in Lebanon: a review of incidence rates for the period of 2003-2008 and projections until 2018. *Popul Health Metrics*. 2014;12(1):4.
13. Dolatkah R, Somi MH, Kermani IA, et al. Increased colorectal cancer incidence in Iran: a systematic review and meta-analysis *BMC Publ Health*. 2015;15:997. doi:10.1186/s12889-015-2342-9.
14. Kasi PM, Shahjehan F, Cochuyt JJ, Li Z, Colibaseanu DT, Merchea A. Rising proportion of young individuals with rectal and colon cancer. *Clin Colorectal Canc*. 2018;18(1):e87-e95.
15. Rawla P, Sunkara T, Barsouk A. Epidemiology of colorectal cancer: incidence, mortality, survival, and risk factors *Gastroenterol Rev*. 2019;14(2):89–103. doi:10.5114/pg.2018.81072.
16. Jayasekara H, English DR, Haydon A, et al. Associations of alcohol intake, smoking, physical activity and obesity with survival following colorectal cancer diagnosis by stage, anatomic site and tumor molecular subtype. *Int J Canc*. 2018;142: 238–250. doi:10.1002/ijc.31049.
17. Taylor DP, Stoddard GJ, Burt RW, et al. How well does family history predict who will get colorectal cancer? Implications for cancer screening and counseling. *Genet Med*. 2011;13(5):385-391.
18. Farinetti A, Zurlo V, Manenti A, Coppi F, Mattioli AV. Mediterranean diet and colorectal cancer: a systematic review. *Nutrition*. 2017;43-44:83-88. doi:10.1016/j.nut.2017.06.008.
19. Aran V, Victorino AP, Thuler LC, Ferreira CG. Colorectal cancer: epidemiology, disease mechanisms and interventions to reduce onset and mortality. *Clin Colorectal Canc*. 2016;15(3):195-203.

20. Kune GA. The melbourne colorectal cancer study: reflections on a 30-year experience. *Med J Aust.* 2010;193(11):648.
21. Miller KD, Nogueira L, Mariotto AB, et al. Cancer treatment and survivorship statistics, 2019. *CA A Cancer J Clin.* 2019;69:363–385. doi:[10.3322/caac.21565](https://doi.org/10.3322/caac.21565).
22. Ibrahim T, Saer-Ghorra C, Trak-Smayra AB, et al. Molecular characteristics of colorectal cancer in a Middle Eastern population in a single institution. *Ann Saudi Med.* 2018;38:251–259.
23. Elias F, Khuri FR, Adib SM, et al. Financial burden of cancer drug treatment in Lebanon. *Asian Pacific Journal of Cancer Prevention.* 2016;17(7):3173–3177.