

# Phosphoprotein Enriched in Astrocytes 15 kDa (PEA-15) Reprograms Growth Factor Signaling by Inhibiting Threonine Phosphorylation of Fibroblast Receptor Substrate 2 $\alpha$

Jacob R. Haling,\* Fen Wang,<sup>†</sup> and Mark H. Ginsberg\*

\*Department of Medicine, University of California San Diego, La Jolla, CA 92093-0726; and <sup>†</sup>Center for Cancer and Stem Cell Biology, Institute of Biosciences and Technology, Texas A&M Health Science Center, Houston, TX 77030

Submitted August 5, 2009; Revised December 7, 2009; Accepted December 15, 2009  
Monitoring Editor: Joan Brugge

Changes in cellular expression of phosphoprotein enriched in astrocytes of 15 kDa (PEA-15) are linked to insulin resistance, tumor cell invasion, and cellular senescence; these changes alter the activation of the extracellular signal-regulated kinase (ERK)1/2 mitogen-activated protein (MAP) kinase pathway. Here, we define the mechanism whereby increased PEA-15 expression promotes and sustains ERK1/2 activation. PEA-15 binding prevented ERK1/2 membrane recruitment and threonine phosphorylation of fibroblast receptor substrate 2 $\alpha$  (FRS2 $\alpha$ ), a key link in fibroblast growth factor (FGF) receptor activation of ERK1/2. This reduced threonine phosphorylation led to increased FGF-induced tyrosine phosphorylation of FRS2 $\alpha$ , thereby enhancing downstream signaling. Conversely, short hairpin RNA-mediated depletion of endogenous PEA-15 led to reduced FRS2 $\alpha$  tyrosine phosphorylation. Thus, PEA-15 interrupts a negative feedback loop that terminates growth factor receptor signaling downstream of FRS2 $\alpha$ . This is the dominant mechanism by which PEA-15 activates ERK1/2 because genetic deletion of FRS2 $\alpha$  blocked the capacity of PEA-15 to activate the MAP kinase pathway. Thus, PEA-15 prevents ERK1/2 localization to the plasma membrane, thereby inhibiting ERK1/2-dependent threonine phosphorylation of FRS2 $\alpha$  to promote activation of the ERK1/2 MAP kinase pathway.

## INTRODUCTION

Growth factor receptors transmit signals that regulate cell proliferation and differentiation, promote cell migration and survival, and modulate cellular metabolism. The mitogen-activated protein (MAP) kinase pathway is an essential effector of growth factor receptor signaling. The terminal elements of this pathway are the extracellular signal-regulated kinase (ERK)1 and ERK2. ERK1/2 elicit biological outputs by phosphorylating nuclear targets such as the transcription factor Elk-1 (Gille *et al.*, 1995), cytoplasmic substrates that include stathmin (Lovric *et al.*, 1998) and ribosomal S6 kinase 2 (RSK2) (Jensen *et al.*, 1999), and membrane targets such as fibroblast receptor substrate 2 $\alpha$  (FRS2 $\alpha$ ; Lax *et al.*, 2002). The localization of ERK1/2 dictates its access to substrates and therefore its biological activities. Proteins that regulate the localization of ERK1/2 include kinase suppressor of Ras (KSR), mitogen-activated protein kinase kinase (MEK)-partner 1, Sef, Paxillin, and phosphoprotein enriched in astro-

cytes of 15 kDa (PEA-15) (Jacobs *et al.*, 1999, Formstecher *et al.*, 2001; Zhou *et al.*, 2002; Teis *et al.*, 2002; Ishibe *et al.*, 2003; Torii *et al.*, 2004). PEA-15, in particular, functions as a potent inhibitor of ERK1/2-mediated transcription and cell proliferation by binding directly to ERK1/2 and preventing nuclear localization (Formstecher *et al.*, 2001).

PEA-15 was originally discovered in astrocytes (Araujo *et al.*, 1993) and subsequently found to be widely expressed in a variety of tissues and is conserved among mammals (Danziger *et al.*, 1995). PEA-15 expression has been implicated in numerous pathologies, including glioma, breast cancer, ovarian cancer, astrogliosis, and diabetes (Bera *et al.*, 1994; Hwang *et al.*, 1997; Condorelli *et al.*, 1998; Tsukamoto *et al.*, 2000; Embury *et al.*, 2001; Hao *et al.*, 2001; Underhill *et al.*, 2001; Sharif *et al.*, 2004; Glading *et al.*, 2007; Bartholomeusz *et al.*, 2008). PEA-15 comprises of an N-terminal death effector domain (DED) and a largely unstructured C-terminal tail (Hill *et al.*, 2002). PEA-15 binds directly to ERK1/2 and limits ERK1/2 entry into the nucleus by blocking nuclear import and promoting nuclear export (Formstecher *et al.*, 2001; Whitehurst *et al.*, 2004). NMR “footprinting” and site-directed mutagenesis show that residues in the DED and in the tail of PEA-15 are involved in ERK1/2 binding (Formstecher *et al.*, 2001; Hill *et al.*, 2002). Furthermore, protein kinase C and Ca<sup>2+</sup>/calmodulin-dependent kinase II (CaMKII)/AKT phosphorylate PEA-15 at Ser104 and Ser116, respectively, thus inhibiting ERK1/2 binding (Krueger *et al.*, 2005). Whereas PEA-15 inhibits ERK1/2 phosphorylation of the nuclear transcription factor Elk-1, it does not inhibit the phosphorylation of ERK1/2 cytosolic targets such as stathmin or RSK2 (Formstecher *et al.*, 2001; Vaidyanathan and Ramos, 2003; Krueger *et al.*, 2005). Therefore, PEA-15 func-

This article was published online ahead of print in *MBC in Press* (<http://www.molbiolcell.org/cgi/doi/10.1091/mbc.E09-08-0659>) on December 23, 2009.

Address correspondence to: Mark H. Ginsberg (mhginsberg@ucsd.edu).

Abbreviations used: CHO, Chinese hamster ovary; DED, death effector domain; ERK, extracellular signal-regulated kinase; FRS2 $\alpha$ , fibroblast receptor substrate 2 $\alpha$ ; Grb2, growth factor receptor bound protein 2; HA, hemagglutinin; MAP, mitogen-activated protein; MEK, mitogen-activated protein kinase kinase; PEA-15, phosphoprotein enriched in astrocytes 15 kDa; Raf-1, MAP kinase kinase; RSK2, ribosomal S6 kinase 2; shRNA, short hairpin RNA.

tions to redirect ERK1/2 signaling rather than to inhibit ERK1/2 intrinsic kinase activity. Paradoxically, the expression of PEA-15 enhances activation of Ras and thus MAP kinase kinase kinase (Raf-1) and MEK1/2 that lead to ERK1/2 phosphorylation and activation (Ramos *et al.*, 2000). The mechanism by which PEA-15 potentiates the ERK1/2 MAP kinase pathway is not known.

Here, we define the mechanism whereby PEA-15 increases activation of ERK1/2. Structure–function analysis revealed that PEA-15 binding to ERK1/2 is required for activation of MEK1/2. PEA-15 blocked the association of ERK1/2 with the plasma membrane, thereby preventing threonine phosphorylation of FRS2 $\alpha$ , a signaling adapter that links several tyrosine kinase growth factor receptors to Ras and ERK1/2 activation. Increased PEA-15 lead to reduced ERK1/2-dependent threonine phosphorylation and therefore to prolonged tyrosine phosphorylation of FRS2 $\alpha$ , resulting in sustained activation of MEK1/2 and thus ERK1/2. Furthermore, the capacity of PEA-15 to sustain signaling downstream of FRS2 $\alpha$  is the primary mechanism by which it activates the MAP kinase pathway because genetic deletion of FRS2 $\alpha$  abrogated the capacity of PEA-15 to activate MEK1/2. Thus, PEA-15 can prolong upstream activation of growth factor signaling and the MAP kinase pathway, while preventing cell proliferation by blocking the transcriptional activities of ERK1/2. Expression of this protein therefore reprograms the output and duration of growth factor signaling.

## MATERIALS AND METHODS

### Plasmids

PEA-15 cDNA expression constructs used in this work have been described previously (Chou *et al.*, 2003). The PEA-15 mutant L123R was described in Hill *et al.* (2002). Additional PEA-15 mutants S104D, S116D, and S104D S116D were generated with the QuikChange site-directed mutagenesis kit (Stratagene, La Jolla, CA) by using wild-type pCDNA3-PEA-15 as the template. Human FRS2 $\alpha$  cDNA was obtained from American Type Culture Collection (Manassas, VA) and subcloned into pCDNA3 via polymerase chain reaction (PCR). The FRS2 $\alpha$  mutant T8V was generated with the QuikChange site-directed mutagenesis kit. All PEA-15 and FRS2 $\alpha$  constructs in pCDNA3 included a C-terminal hemagglutinin (HA) tag and were verified by DNA sequencing. A plasmid-based short-hairpin RNA (shRNA) directed against PEA-15 and a control shRNA containing a scrambled sequence were constructed in pSilencer-U6 (Ambion, Austin, TX) and were gifts from Dr. Joseph Ramos (University of Hawai'i-Manoa, Honolulu, HI) and have been described previously (Glading *et al.*, 2007).

### Cell Culture

Chinese hamster ovary (CHO)-K1 cells and glioblastoma A172 cells were obtained from the American Type Culture Collection. The generation of Raf-1:ER cells was described previously (Hughes *et al.*, 1997). Mouse embryonic fibroblast (MEF) cells carrying homozygous LoxP-flanked FRS2 $\alpha$  alleles have been described previously (Lin *et al.*, 2007). All cells were cultured in DMEM (Lonza Walkersville, Walkersville, MD) containing 10% fetal calf serum, 1% nonessential amino acids, 2 mM glutamine (Sigma-Aldrich, St. Louis, MO), 100 U/ml penicillin, and 100  $\mu$ g/ml streptomycin. Transient transfections of CHO, Raf-1:ER, and MEF cells were carried out with Lipofectamine Plus (Invitrogen, Carlsbad, CA) as described by the manufacturer. A172 cells were transfected using a nucleofection device (Lonza Walkersville, Walkersville) in combination with solution V and program U-029 (Lonza Walkersville).

### Antibodies and Reagents

Anti-ERK2, -ERK1, - $\beta$ 1 integrin, -Rho GDI, and -FRS2 were purchased from Santa Cruz Biotechnology (Santa Cruz, CA). Anti-phospho-ERK1/2, -MEK1/2, -phospho-MEK1/2, -phospho-FRS2 $\alpha$  (Tyr196), and -phospho-threonine-proline were obtained from Cell Signaling Technology (Danvers, MA). Anti-HA monoclonal antibody was purchased from Covance Research Products (Princeton, NJ). Rabbit polyclonal anti-PEA-15 (4513) was raised against a glutathione transferase-PEA-15 fusion protein (GST-PEA-15) as described previously (Krueger *et al.*, 2005). Unless otherwise indicated, all antibodies were used at a 1:1000 dilution. 4-Hydroxy tamoxifen (4-OHT) was obtained from Sigma-Aldrich and used at a final concentration of 300 nM for the

induction of Raf-1. Calf intestinal phosphatase (CIP) was purchased from New England Biolabs (Ipswich, MA) and incubated with cell lysates for 2 h at room temperature.

### Subcellular Fractionation

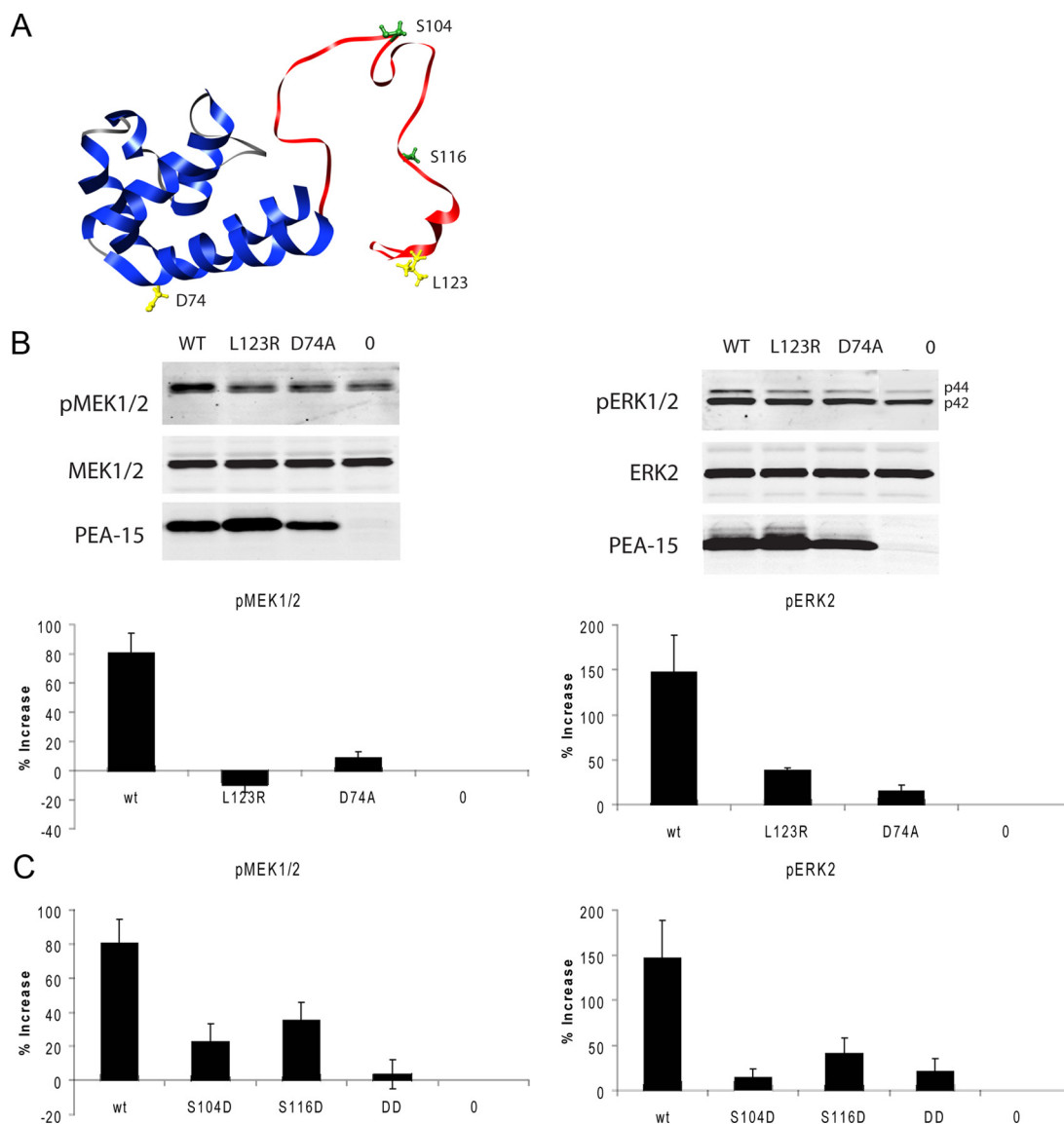
CHO cells were transfected with cDNA encoding wild-type PEA-15, PEA-15 mutant L123R, or empty vector. Cells were allowed to recover from transfection by allowing growth in complete media for 24 h. Next, cells were harvested in fractionation buffer (20 mM Tris, pH 7.4, 50 mM NaCl, 1 mM NaF, 5 mM KCl, 1 mM NaVO<sub>4</sub>, with Complete EDTA-free protease inhibitor cocktail [Roche Diagnostics, Indianapolis, IN]). After incubation on ice for 20 min, cells were homogenized by shearing through a 27-gauge needle. Forty microliters of total cell lysate was saved, and the remaining sample was centrifuged at 2000 rpm to sediment the nuclei. The supernatant was then spun at 14,000 rpm for 30 min at 4°C to separate the sedimented membrane fraction from the soluble cytosolic fraction. The membrane pellet was washed with 1 ml of lysis buffer, centrifuged at 14,000 rpm for 20 min at 4°C, and resuspended in 180  $\mu$ l of lysis buffer containing 1% NP-40. Total, cytosolic, and membrane fractions were resolved by SDS-polyacrylamide gel electrophoresis (PAGE) and analyzed by Western blotting.

## RESULTS

### PEA-15 Binding to ERK1/2 Is Necessary for PEA-15 Stimulation of the ERK MAP Kinase Pathway

Increased expression of PEA-15 activates Ras leading to activation of MEK1/2 and resulting activation of ERK1/2 (Ramos *et al.*, 2000). PEA-15 binds to ERK1/2 (Formstecher *et al.*, 2001); we therefore studied ERK1/2 binding-defective PEA-15 mutants to determine whether ERK1/2 binding was involved in activation of the MAP kinase pathway. PEA-15 binding to ERK1/2 is mediated by both the N-terminal DED and the C-terminal tail of PEA-15 (Figure 1A). In particular, mutation of PEA-15 Asp74 or Leu123 (Figure 1A) block ERK1/2 binding (Hill *et al.*, 2002). Cells transfected with wild type or either the D74A or L123R mutant PEA-15 were monitored for phosphorylated MEK1/2 and phosphorylated ERK1/2 to assess the activation of the MAP kinase pathway. Expression of wild type PEA-15 resulted in the expected increase of phosphorylated MEK1/2 and ERK1/2 (Ramos *et al.*, 2000), compared with cells transfected with an empty DNA vector. In contrast, neither cells transfected with the L123R nor D74A PEA-15 mutant increased MEK1/2 or ERK1/2 phosphorylation (Figure 1B) in spite of expressing similar levels of PEA-15. These data show that mutations in two distinct domains of PEA-15 that disrupt ERK1/2 binding abrogate the capacity of PEA-15 to activate MEK1/2 and their downstream targets.

Protein kinase C and CaMKII or AKT phosphorylate PEA-15 at Ser104 and Ser116, respectively, thus inhibiting ERK1/2 binding (Krueger *et al.*, 2005). As an additional test of the role of ERK1/2 binding in activation of the MAP kinase pathway, we examined the effect of aspartic acid substitutions that mimic the effect of these serine phosphorylations. PEA-15 mutants containing aspartic acid at either of the serine phosphorylation sites (S104D, S116D) or a mutant containing both mutations (S106D S116D) exhibited marked reduction in their capacity to stimulate phosphorylation of MEK1/2 and ERK1/2 (Figure 1C and Supplemental Figure S1). Thus, four different mutations that disrupt ERK1/2 binding block the ability of PEA-15 to activate the MAP kinase pathway. Notably, the L123R mutation lies outside the region required for the binding of phospholipase D (Zhang *et al.*, 2000; Viparelli *et al.*, 2008) and D74A, S104D, and S116D mutants do not affect binding to RSK2 (Vaidyanathan and Ramos, 2003). Thus, we conclude that PEA-15 binding to ERK1/2 is required for PEA-15-mediated activation of the ERK1/2 MAP kinase pathway.

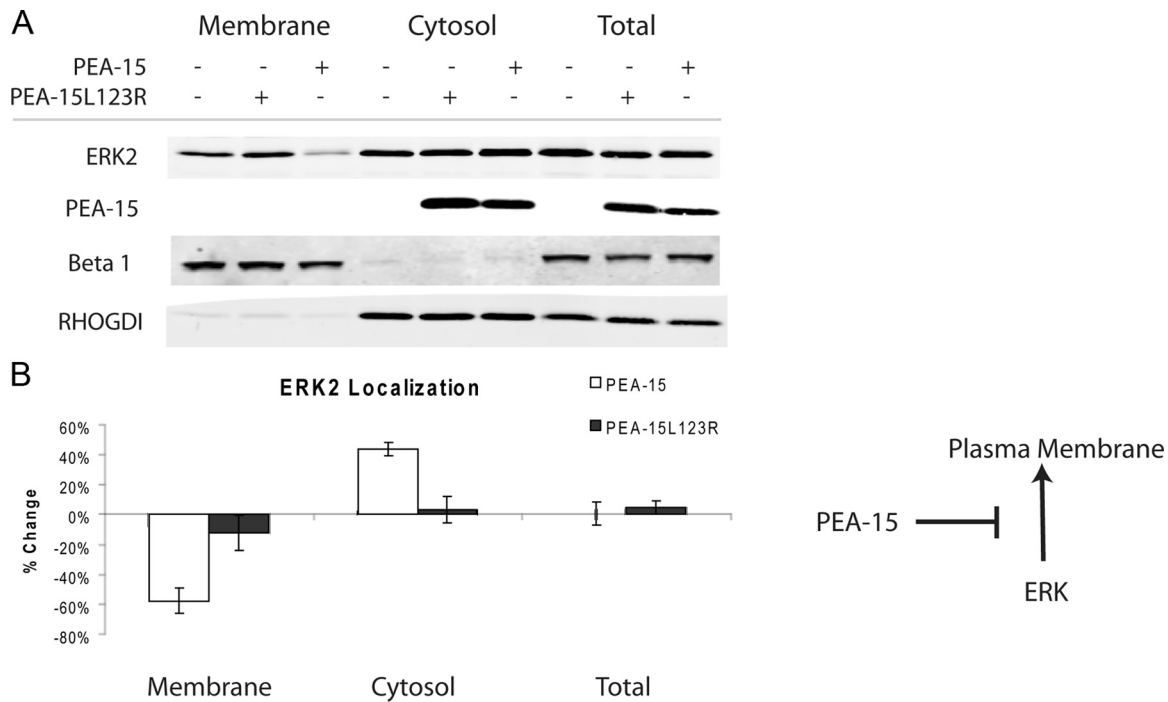


**Figure 1.** Binding of PEA-15 to ERK1/2 is required for activation of the ERK MAP kinase pathway. (A) Ribbon representation of the three-dimensional structure of PEA-15 (Protein Data Bank accession code 1N3K) with helices colored in blue and the loops of the C terminus in red. The side chains of selected residues are drawn as ball-and-stick models with Asp74 and Leu123 in yellow and Ser104 and Ser116 in green. (B) Wild-type PEA-15 increases levels of endogenous pMEK1/2 and pERK1/2, whereas mutations in PEA-15 that abrogate binding to ERK1/2 (L123R and D74A) do not. CHO cells were transfected with cDNAs encoding HA-tagged wild-type PEA-15 or the indicated PEA-15 mutants. After 24 h, the cells were lysed, fractionated by SDS-PAGE, and analyzed by immunoblotting. The blots were quantified by densitometric scanning and represented in bar graphs below  $\pm$  SEM. (C) Phosphomimetic mutant PEA15 (S104D, S116D, or double mutant S104D S116D) with reduced binding to ERK1/2 do not increase pMEK1/2 and pERK1/2 to the same extent as wild-type PEA-15.

**PEA-15 Blocks ERK1/2 Membrane Association**

Binding of PEA-15 to ERK1/2 reroutes ERK1/2 from the nucleus to the cytosol (Formstecher *et al.*, 2001; Whitehurst *et al.*, 2004; Krueger *et al.*, 2005). Because the activation of Ras, the first step in the MAP kinase pathway, occurs at the cell membrane (Quilliam *et al.*, 1995; Downward 1996), we examined the capacity of PEA-15 to inhibit ERK localization to the plasma membrane. We transfected CHO cells with cDNA encoding PEA-15 or ERK1/2 binding-defective PEA-15(L123R) and examined the localization of endogenous ERK2 in the membrane and cytosol. Expression of PEA-15 reduced membrane-associated ERK2 compared with PEA-15 (L123R) or an empty vector

(Figure 2A). Similar results were observed for the localization of ERK1 (Supplemental Figure S2). Quantification revealed that PEA-15 caused a marked decrease in membrane-localized ERK2 and a corresponding increase in the cytosolic fraction (Figure 2B). In contrast, PEA-15 (L123R) had no effect on the distribution of ERK2 (Figure 2B). As expected, PEA-15 was confined to the cytosol (Danziger *et al.*, 1995) as was the marker RhoGDI (Shimizu *et al.*, 1991; Figure 2A). Similarly, the membrane marker,  $\beta$ 1 integrin was detected only in the membrane fraction, thereby confirming the subcellular fractionation. Thus, PEA-15 sequesters ERK2 in the cytosol, limiting its association with the cell membrane (Figure 2C).



**Figure 2.** PEA-15 blocks the association of ERK1/2 with the plasma membrane. CHO cells were transfected with cDNAs encoding HA-tagged PEA-15, PEA-15 (L123R), or empty vector. After 24 h, the cells were disrupted by osmotic shock and fractionated into membrane and cytoplasmic fractions. Each fraction or the total lysate was separated by SDS-PAGE and analyzed by immunoblotting. Levels of ERK2 were quantified by densitometric scanning. (A) Wild-type PEA-15 reduced membrane association of ERK2, whereas the PEA-15 (L123R) did not.  $\beta$ 1 integrin and RHO GDI serve as validation of subcellular fractionation for membrane and cytoplasmic fractions respectively. (B) Bar graph depicting the mean of data from three independent experiments  $\pm$  SEM. Wild-type PEA-15 decreases levels of endogenous ERK2 in membrane fractions and increases levels of endogenous ERK2 in cytoplasmic fractions. The PEA-15 mutant L123R has little effect on ERK2 localization.

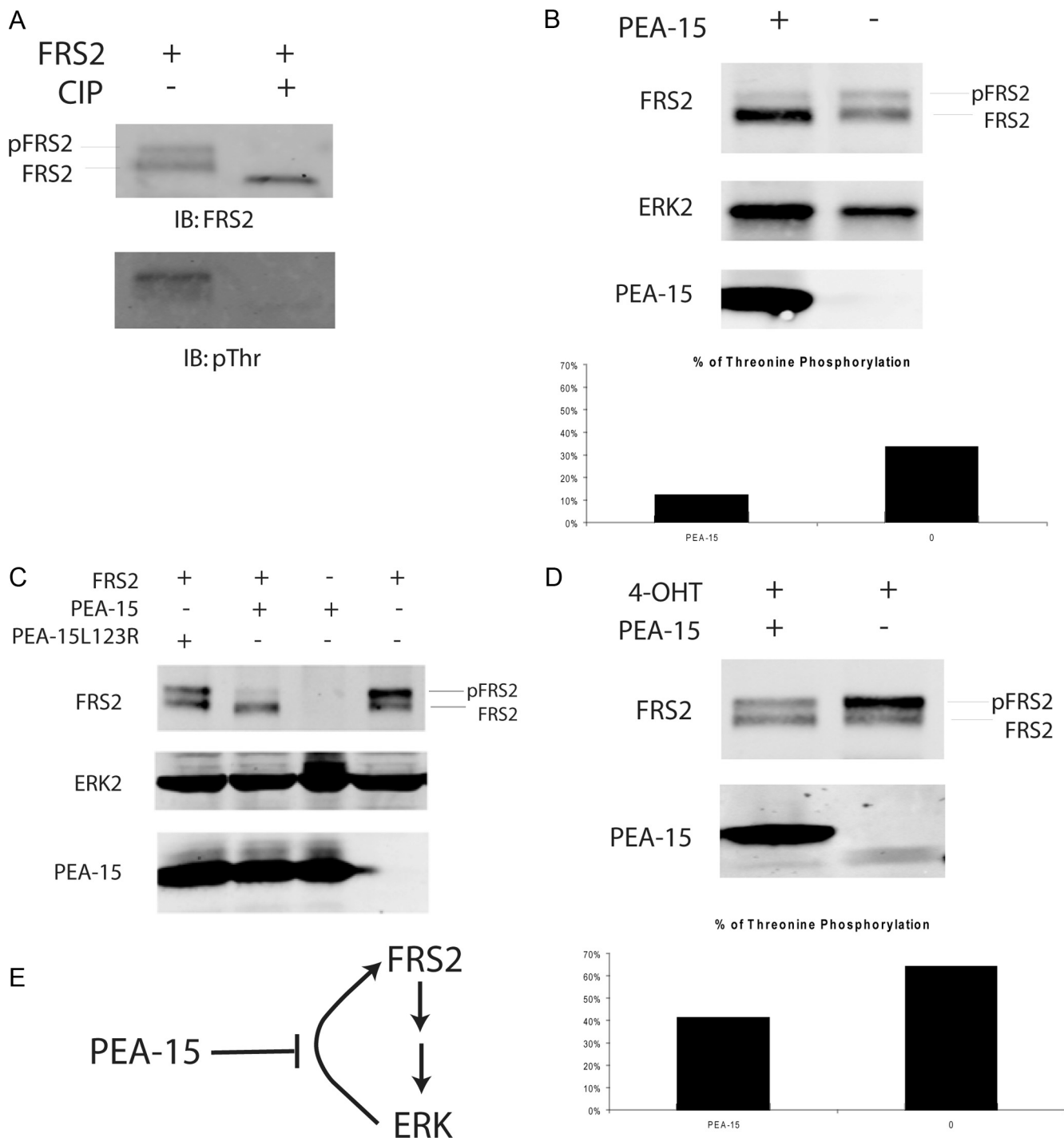
### PEA-15 Blocks Threonine Phosphorylation of FRS2 $\alpha$

As noted above, PEA-15 blocked ERK1/2 localization to the plasma membrane leading us to seek potential membrane-associated ERK1/2 substrates. The docking protein FRS2 $\alpha$  is myristoylated, resulting in membrane localization. ERK1/2 phosphorylates FRS2 $\alpha$ , thereby inhibiting its tyrosine phosphorylation by growth factor receptors to reduce binding of growth factor receptor bound protein 2 (Grb2)-SOS complex, leading to reduced Ras activation and ultimately ERK1/2 activation (Lax *et al.*, 2002). We used a gel mobility shift to assay phosphorylation of FRS2 $\alpha$ . Cells were transfected with cDNA encoding HA-tagged FRS2 $\alpha$ , lysed, and anti-FRS2 $\alpha$  immunoprecipitates were treated with an alkaline phosphatase or left untreated. Immunoblotting with an anti-HA or anti-phospho-threonine antibody revealed that the upper band detected by the HA antibody contained phosphorylated threonine and that this band was eliminated by dephosphorylation with alkaline phosphatase (Figure 3A). This result confirms that the large mobility shift of FRS2 $\alpha$  (Lax *et al.*, 2002) can be used to monitor threonine phosphorylation. Overexpression of PEA-15 lead to a reduction in the upper band of FRS2 $\alpha$  (Figure 3B and Supplemental Figure S3), whereas expression of PEA-15(L123R) did not reduce threonine phosphorylated FRS2 $\alpha$  (Figure 3C). We used a CHO cell line containing tamoxifen-regulated Raf-1 to activate ERK1/2 (Hughes *et al.*, 1997) to increase threonine phosphorylation of FRS2 $\alpha$ . When these cells were treated with tamoxifen, 64% of FRS2 $\alpha$  was phosphorylated, whereas PEA-15-expressing cells exhibited a reduction in phosphorylation (41% phosphorylated; Figure 3D). Importantly, in the absence of tamoxifen, the PEA-15 effect was

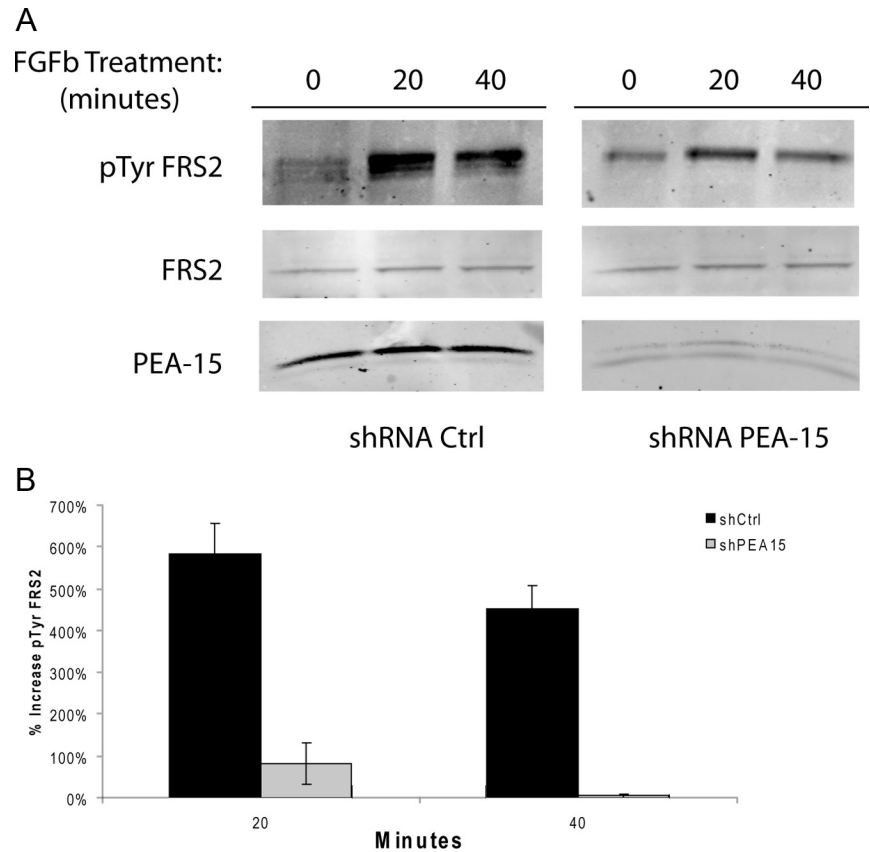
much stronger (Supplemental Figure S4), indicating that increased ERK activation can partially bypass the PEA-15 effect. Thus, PEA-15 blocks ERK1/2-mediated threonine phosphorylation of FRS2 $\alpha$  (Figure 3E).

### Depletion of Endogenous PEA-15 Decreases Tyrosine Phosphorylation of FRS2 $\alpha$

The foregoing experiments demonstrated that PEA-15 binding to ERK1/2 blocks their localization to the plasma membrane and reduces threonine phosphorylation of FRS2 $\alpha$ . Such threonine phosphorylation is known to reduce FGF-induced tyrosine phosphorylation of FRS2 $\alpha$  (Lax *et al.*, 2002). To examine the role of endogenous PEA-15 in regulating FRS2 $\alpha$  signaling, we used glioblastoma A172 cells that express PEA-15 (Glading *et al.*, 2007). shRNA transfection induced a 90% reduction in PEA-15 expression (Figure 4A). When these cells were treated with basic FGF (FGFb), FRS2 $\alpha$  tyrosine phosphorylation at residue 196 was markedly reduced in cells that had been depleted of PEA-15 (Figure 4A). Phosphorylation of tyrosine 196 functions as a docking site for Grb2-SOS complexes (Kouhara *et al.*, 1997) and is therefore important for downstream MAP kinase signaling. We quantified three such experiments and observed statistically significant ( $p = 0.01$ ) five-fold reduction in FGF-induced FRS2 $\alpha$  tyrosine phosphorylation in PEA-15-depleted cells (Figure 4B) at 20 min after FGFb addition. By 40 min after FGFb addition, no increase in FRS2 $\alpha$  tyrosine phosphorylation was observed in PEA-15-depleted cells. Thus, endogenous PEA-15 increases and prolongs FRS2 $\alpha$  phosphorylation in response to FGFb.



**Figure 3.** PEA-15 inhibits threonine phosphorylation of FRS2 $\alpha$ . (A) The mobility shift of FRS2 is due to threonine phosphorylation. CHO cells were transfected with cDNAs encoding HA-tagged FRS2 $\alpha$ . After 24 h, the cells were lysed and split into two fractions. One fraction was treated with CIP at room temperature for 2 h, whereas the other fraction was left untreated. Each fraction was immunoprecipitated with anti-FRS2 $\alpha$ , separated by SDS-PAGE, and immunoblotted with anti-HA or anti-pThr antibodies. (B) PEA-15 reduces threonine phosphorylation of FRS2 $\alpha$ . CHO cells were cotransfected with cDNAs encoding HA-tagged FRS2 $\alpha$  and HA-tagged PEA-15 in indicated samples. Cell lysates were analyzed by SDS-PAGE followed by immunoblotting. Immunoblot of ERK2 serves as a loading control. Threonine phosphorylation of FRS2 $\alpha$  was quantified by densitometric scanning and represented in bar graph below. (C) A PEA-15 mutant that abrogates binding to ERK1/2 does not reduce threonine phosphorylation of FRS2 $\alpha$ . CHO cells were cotransfected with cDNAs encoding HA-tagged FRS2 $\alpha$  in combination with either HA-tagged wild-type PEA-15 or PEA-15(L123R). Cell lysates were analyzed by SDS-PAGE followed by immunoblotting. Note that PEA-15(L123R) does not reduce the upper band of FRS2 $\alpha$  to the same extent as wild-type PEA-15. Immunoblot of ERK2 serves as a loading control. (D) Raf-ER CHO cells were cotransfected with cDNAs encoding HA-tagged FRS2 $\alpha$  in combination with either HA-tagged PEA-15 or empty vector. After 24 h, the cells were treated with 4-OHT for 30 min at 37°C. Cells were lysed immediately and analyzed by SDS-PAGE followed by immunoblotting. Note that the upper band of FRS2 $\alpha$  is reduced in the presence of PEA-15. Immunoblot of pERK1/2 serves as a control for Raf-MEK-ERK activation after the addition of 4-OHT. Threonine phosphorylation of FRS2 $\alpha$  was quantified by densitometric scanning and represented in bar graph below. (E) PEA-15 inhibits ERK-mediated threonine phosphorylation of FRS2 $\alpha$ .



**Figure 4.** Knockdown of endogenous PEA-15 attenuates tyrosine phosphorylation of FRS2 $\alpha$ . A172 cells were transfected with shRNA for PEA-15 (shPEA15) or a scrambled shRNA (shCtrl). All plates were serum starved for 16 h before stimulation with 100 ng/ml FGFb for the indicated amount of time. Cell lysates were analyzed by SDS-PAGE followed by immunoblotting. Levels of FRS2 $\alpha$  tyrosine phosphorylation (pTyr FRS2) were quantified by densitometric scanning. (A) Top, tyrosine phosphorylation of FRS2 $\alpha$  (pTyr FRS2) is abundant at 20 and 40 min in shCtrl samples, whereas reduced pTyr FRS2 is observed at the same time points in shPEA15 samples. All samples were run on the same gel; irrelevant intervening bands were excised to save space. (B) The bar graph summarizes the mean percent increase of pTyr FRS2 relative to the 0 time point from three independent experiments. Note that the knock down of PEA-15 greatly diminishes pTyr FRS2 in response to FGFb.

#### PEA-15 Prolongs FGF-induced Activation of the ERK1/2 MAP Kinase Pathway

Endogenous levels of PEA-15 affected the degree and duration of FGF-induced tyrosine phosphorylation of FRS2 $\alpha$ , suggesting that it might regulate the duration of FGF-induced activation of the MAP kinase pathway. To test this idea, we overexpressed either PEA-15 or PEA-15(L123R) and examined the effect on FGF-induced FRS2 $\alpha$  tyrosine phosphorylation and ERK2 phosphorylation. Overexpression of wild type PEA-15 increased tyrosine phosphorylation of FRS2 $\alpha$  relative to over expression of PEA-15(L123R) (Figure 5, second row); conversely, the PEA-15(L123R)-transfected cells exhibited a more threonine phosphorylation of FRS2 $\alpha$  than PEA-15-transfected cells, as indicated by the appearance of the FRS2 $\alpha$  of reduced mobility (Figure 5, top row). The increased tyrosine phosphorylation of FRS2 $\alpha$  in wild-type PEA-15-transfected cells was associated with prolonged ERK2 activation (Figure 5, third row). In particular, PEA-15 overexpression led to a markedly prolonged response at 60 min, a time when the PEA-15(L123R) cells exhibited maximal threonine phosphorylation (Figure 5, first row). Furthermore, PEA-15 did not increase ERK1/2 phosphorylation in cells expressing FRS2 $\alpha$  T8V, an ERK phosphorylation-resistant mutant (Supplemental Figure S5). Thus, PEA-15 extends FGF-induced activation of ERK1/2 by reducing threonine phosphorylation leading to increased tyrosine phosphorylation of FRS2 $\alpha$ .

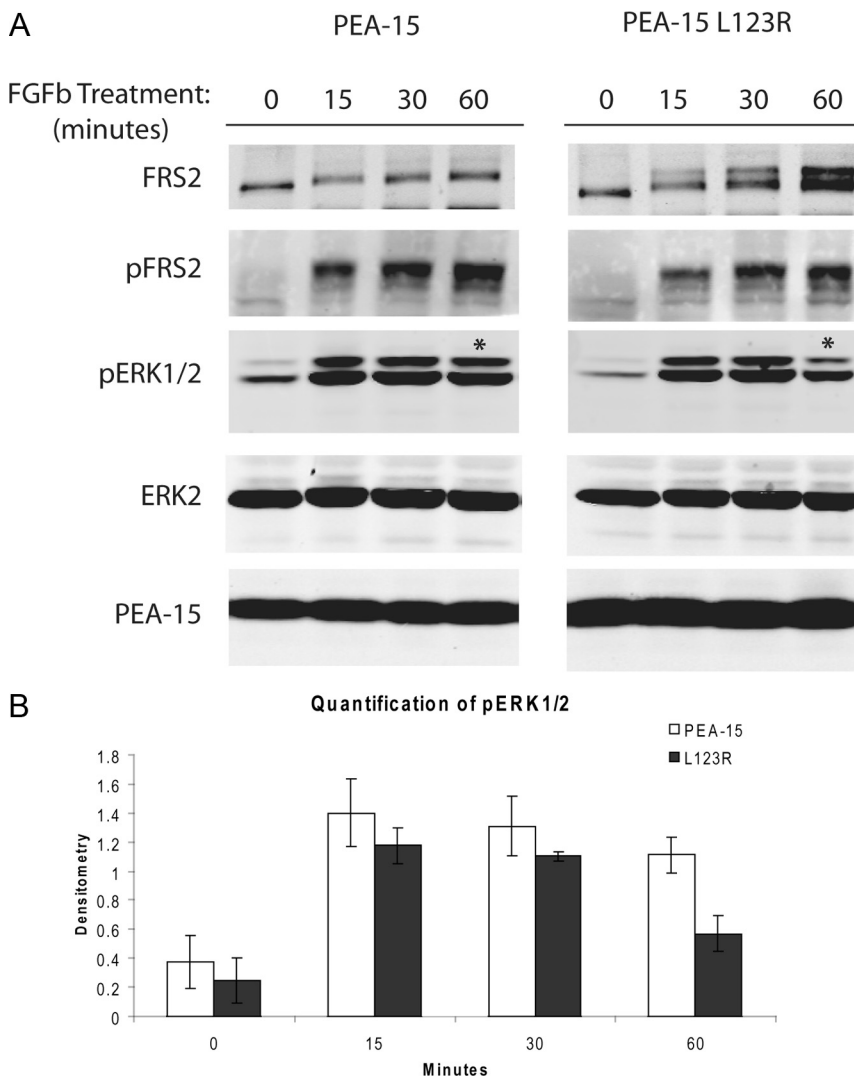
#### FRS2 $\alpha$ Is Required for PEA-15 to Activate the MAP Kinase Pathway

The previous studies established that PEA-15 binding to ERK1/2 blocked threonine phosphorylation of FRS2 $\alpha$ , lead-

ing to prolonged tyrosine phosphorylation and activation of the MAP kinase pathway. We next asked whether the capacity of PEA-15 to increase activation of this pathway was dependent on FRS2 $\alpha$ . We used immortalized MEFs derived from *Frs2 $\alpha$ <sup>fllox</sup>* mice and infected them with an adenovirus encoding Cre-recombinase, resulting in the deletion of both *Frs2 $\alpha$*  alleles (*Frs2 $\alpha$ <sup>-/-</sup>* cells). As a control, cells were infected with adenovirus encoding LacZ. The two resulting MEF cell lines were transfected with PEA-15, PEA-15(L123R), or empty vector. MEF cells lacking FRS2 $\alpha$  did not exhibit activation of MEK1/2 (Figure 6A, left) when expressing wild-type PEA-15, whereas the control, LacZ adenovirus-infected cells did so (Figure 6A, right). Re-expression of FRS2 $\alpha$  in *Frs2 $\alpha$ <sup>-/-</sup>* cells restored the phosphorylation of MEK1/2 in response to PEA-15 overexpression (Figure 6B, left). Thus, FRS2 $\alpha$  is required for PEA-15 to induce activation of the MAP kinase pathway (Figure 6C).

#### DISCUSSION

The ERK1/2 MAP kinase pathway is a central regulator of cellular behaviors and PEA-15, an ERK1/2 binding protein, has profound effects on the activation and output of this pathway (Ramos *et al.*, 2000; Formstecher *et al.*, 2001). Here, we have defined the mechanism whereby PEA-15 increases activation of MEK1/2 and consequently, ERK1/2 (Figure 7). Mutational analysis revealed that PEA-15 binding to ERK1/2 is required for activation of MEK1/2 and ERK1/2. Because this pathway is initiated by activated Ras at the plasma membrane, we examined the effects of PEA-15 on ERK1/2 localization and function at the membrane. PEA-15 blocked the association of ERK1/2 with the membrane,

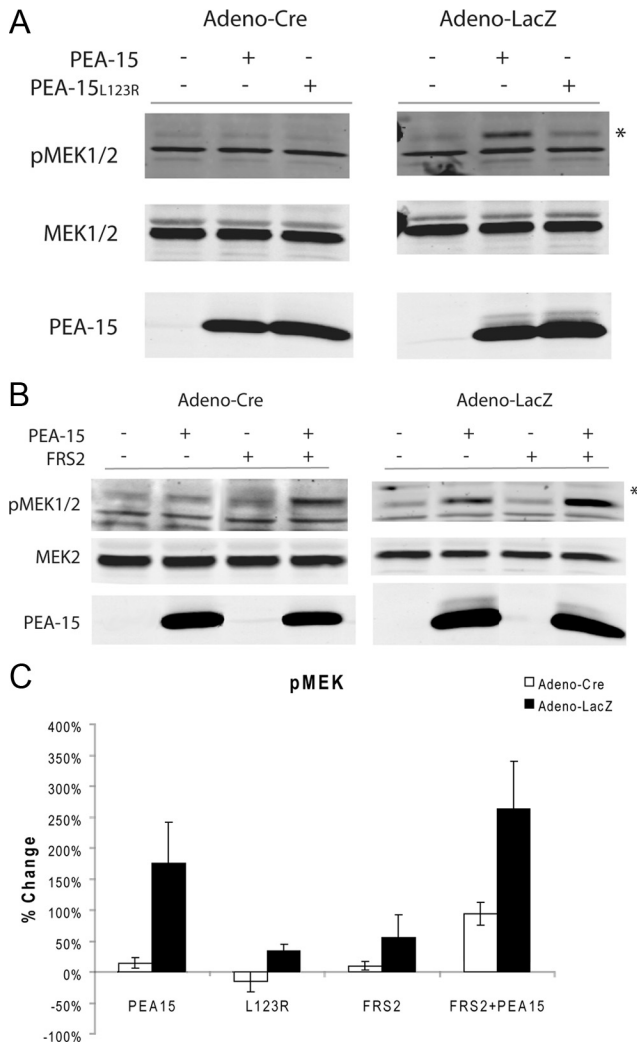


**Figure 5.** Overexpression of PEA-15 prolongs tyrosine phosphorylation of FRS2 $\alpha$  and phosphorylation of ERK1/2. (A) CHO cells were cotransfected with cDNAs encoding HA-tagged FRS2 $\alpha$  and either HA-tagged PEA-15 or PEA-15(L123R). All plates were serum starved for 16 h before stimulation of FGFb for the indicated length of time. Cells were lysed, fractionated by SDS-PAGE, and analyzed by immunoblotting with anti-HA (for the detection of FRS2 $\alpha$  and PEA-15), anti-pY196 FRS2 $\alpha$ , anti-pERK1/2, and anti-ERK2 antibodies. The kinetics of FGF-induced phosphorylation of FRS2 $\alpha$  and ERK1/2 are altered in the presence of wild-type PEA-15 (left) relative to PEA-15(L123R) (right). Note that the upper band of FRS2 $\alpha$  (previously established as threonine phosphorylated) is absent from cells transfected with wild-type PEA-15, whereas a robust upper band of FRS2 $\alpha$  in cells cotransfected with PEA-15 L123R appears at 60 and 120 min. The asterisks in the pERK1/2 indicate the prolonged pERK1/2 phosphorylation in the presence of wild-type PEA-15. (B) Quantification of data (n = 4) from experimental design described in A. Depicted are the mean  $\pm$  SEM the difference at 60 min was significant (p = 0.003, t test).

thereby preventing threonine phosphorylation of FRS2 $\alpha$ , a membrane-tethered adapter that links several tyrosine kinase growth factor receptors to Ras and ERK1/2 activation. This threonine phosphorylation terminates FRS2 $\alpha$  signaling by inhibiting tyrosine phosphorylation, thereby preventing the binding of downstream adapters such as Grb2 (Lax *et al.*, 2002). We now find that increased PEA-15 leads to prolonged tyrosine phosphorylation of FRS2 $\alpha$ , which results in activation of MEK1/2 and thus ERK1/2. Furthermore, shRNA-mediated depletion of endogenous PEA-15 decreased FGF-induced tyrosine phosphorylation of endogenous FRS2 $\alpha$ , thereby establishing the biological relevance of PEA-15 regulation of this pathway. Importantly, these studies used mouse embryo fibroblasts, human glioblastoma cells, and CHO cells, suggesting that these findings can be generalized to many cell types. Consequently, PEA-15 increases activation of the ERK 1/2 MAP kinase pathway by interrupting a negative feedback loop formed by ERK1/2 phosphorylation of FRS2 $\alpha$ . Finally, genetic deletion of FRS2 $\alpha$  abrogated the capacity of PEA-15 to activate MEK1/2, establishing that this is the major mechanism whereby PEA-15 activates the MAP kinase pathway. Thus, we describe a novel mechanism for prolonging upstream activation of growth factor signaling and the MAP kinase pathway; in particular, PEA-15 binds ERK1/2 preventing its

localization to the plasma membrane, thereby inhibiting threonine phosphorylation of FRS2 $\alpha$ .

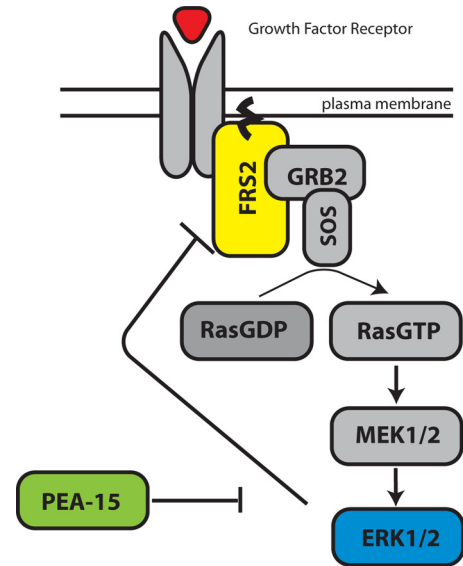
PEA-15 must bind to ERK1/2 to activate MEK1/2 and ERK1/2. Mutations in the folded PEA-15 DED (D74A) or its unstructured C terminus (L123R) and phosphorylation-mimicking Asp mutations at Ser104 and Ser116 block ERK1/2 binding. Each of these mutations abrogated the capacity of PEA-15 to activate MEK1/2 and ERK1/2. Importantly, these mutants were well expressed and several of them have only localized effects on the heteronuclear single quantum correlation nuclear magnetic resonance spectrum of PEA-15 (Hill *et al.*, 2002), indicating that these mutants do not disrupt the overall structure of PEA15. Furthermore, PEA-15 can bind to RSK2; however, the D74A mutation does not impair this interaction (Vaidyanathan and Ramos, 2003). Similarly, Leu123 lies outside the region of PEA-15 that binds to phospholipase D (Zhang *et al.*, 2000; Viparelli *et al.*, 2008). Yet, each of these mutants disrupted activation of the MAP kinase pathway, indicating that binding of RSK2 or phospholipase D is not required for the effect of PEA-15 on MEK1/2 and ERK1/2 activation. Importantly, phosphorylation of PEA-15 acts as a molecular switch that disengages PEA-15 from ERK1/2 (Krueger *et al.*, 2005; Renganathan *et al.*, 2005) and leads to PEA-15 recruitment to the death inducing signaling complex (Condorelli *et al.*, 1999; Kitsberg



**Figure 6.** FRS2 $\alpha$  is required for PEA-15 to activate MEK1/2. FRS2 $\alpha$ -floxed MEFs were transfected with an adenovirus encoding Cre-recombinase or LacZ. After 48 h, cells were transfected with cDNAs encoding HA-tagged wild-type PEA-15, PEA-15(L123R), and/or HA-tagged FRS2 $\alpha$ . Twenty-four hours after transfection, cells were lysed, fractionated by SDS-PAGE, and analyzed by immunoblotting. (A) PEA-15 does not increase MEK1/2 phosphorylation in cells deficient in FRS2 $\alpha$ . Asterisk denotes the band corresponding to pMEK1/2. (B) Re-expression of FRS2 $\alpha$  restores the ability of PEA-15 to activate MEK1/2. Asterisk denotes the band corresponding to pMEK1/2. (C) Quantification of the data from four independent experiments described in A and B. Percentage of increase is calculated relative to cells transfected with empty vector  $\pm$  SEM.

*et al.*, 1999; Xiao *et al.*, 2002). Our finding that PEA-15 phosphomimetic mutations block its ability to activate the MAP kinase pathway establish another regulatory role for PEA-15 phosphorylation.

We found a reduction of ERK2 in the membrane fraction of PEA-15-expressing cells and ascribe this effect to the interaction of PEA-15 with ERK1/2 because it was abolished by a L123R mutation that inhibits ERK binding. Previous studies showed that PEA-15 can reduce nuclear accumulation of ERK1/2 by both blocking nuclear entry (Whitehurst *et al.*, 2004) and inducing nuclear export (Formstecher *et al.*, 2001), thereby inhibiting the transcriptional effects of ERK1/2. ERK1/2 are targeted to the plasma membrane by inter-



**Figure 7.** Schematic diagram of how PEA-15 inhibits a negative feedback loop between ERK1/2 and FRS2 $\alpha$ . PEA-15 binds directly to ERK1/2, preventing its membrane localization. Consequently, this limits ERK-mediated threonine phosphorylation of the membrane tethered substrate FRS2 $\alpha$ , resulting in increased and prolonged tyrosine phosphorylation and activation of downstream signaling pathways such as that leading to activation of ERK1/2 MAP kinase.

acting with the scaffolding protein KSR that binds to membranes via its C1 domain (Muller *et al.*, 2001; Zhou *et al.*, 2002), leading to the formation of a Ras/MEK/ERK complex at the plasma membrane (Morrison and Davis, 2003). PEA-15 binds to ERK2 near the F-recruitment site ( $\alpha$ G helix of ERK2), and ERK2 mutations at this site abrogate binding to PEA-15 (Chou *et al.*, 2003); this same region is involved in binding to KSR (Cacace *et al.*, 1999; Jacobs *et al.*, 1999). Furthermore, PEA-15 blocks binding of ERK1/2 substrates (e.g., Elk-1) to the D-recruitment site (Callaway *et al.*, 2007); an effect that may also contribute to blockade of membrane localization. In either case, PEA-15 blocks ERK1/2 signaling in the nucleus, and we now show that it blocks the membrane localization of ERK1/2 and the phosphorylation of a membrane-associated substrate.

PEA-15 blocks ERK-mediated threonine phosphorylation of FRS2 $\alpha$ , a membrane-tethered (Kouhara *et al.*, 1997) ERK1/2 substrate (Lax *et al.*, 2002; Wu *et al.*, 2003), thereby prolonging its tyrosine phosphorylation and downstream signaling. Another FRS2 family member, FRS3 or FRS2 $\beta$ , is 72% identical to FRS2 $\alpha$  in amino acid sequence and is also able to activate ERK1/2 in a sustained manner (Gotoh *et al.*, 2004). However, FRS2 $\beta$  does not contain the eight canonical ERK phosphorylation motifs—PXTP—and is therefore not involved in an ERK1/2-mediated negative feedback mechanism (Lax *et al.*, 2002; Gotoh *et al.*, 2004). Thus, our finding that PEA-15 blocks membrane-recruitment of ERK1/2 suggests that FRS2 $\alpha$  is a preferred target of the effects of PEA-15, an idea supported by the observation that deletion of FRS2 $\alpha$  blocked the ability of PEA-15 to activate MEK 1/2; hence, regulation FRS2 $\alpha$  is a principal mechanism by which PEA-15 increases activation of the ERK1/2 MAP kinase pathway.

FRS2 $\alpha$  is similar to other adaptor proteins such as DOK, Gab, and IRS; however, the FRS2 family is unusual in that it is myristoylated and therefore constitutively membrane associated. Other membrane-linked docking proteins contain a



pleckstrin homology domain, and their membrane localization is dependent on a variety of factors including the availability of specific phosphoinositides. For example, Gab1 is phosphorylated by ERK1/2 at two serine residues leading to Gab1 recruitment to the plasma membrane (Eulenfeld and Schaper, 2009). Because PEA-15 prevents ERK1/2 membrane association without inhibiting its kinase activity (Formstecher *et al.*, 2001), PEA-15 is unlikely to affect Gab1 recruitment. That said, it will be of interest to identify effects of PEA-15 on phosphorylation of other membrane localized ERK1/2 substrates.

Our study establishes a mechanism whereby PEA-15 promotes and sustains growth factor signaling: by binding to ERK1/2, PEA-15 blocks ERK1/2-mediated phosphorylation of FRS2 $\alpha$ , thereby interrupting a major negative feedback loop that terminates growth factor signaling. These results have important implications for the biological effects of PEA-15 expression. In addition to increasing ERK1/2 activation (Ramos *et al.*, 2000), our data show that PEA-15 prolongs signaling downstream of FRS2 $\alpha$ , suggesting much broader activating effects on signal transduction pathways. Unphosphorylated PEA-15 prevents nuclear translocation of ERK1/2 thereby inhibiting transcriptional effects of ERK1/2 that lead to cell cycle progression and tumor cell invasion (Formstecher *et al.*, 2001; Renault *et al.*, 2003; Glading *et al.*, 2007). Furthermore, PEA-15 can block tumor necrosis factor-related apoptosis-inducing ligand (TRAIL)-induced apoptosis (Condorelli *et al.*, 1999; Kitsberg *et al.*, 1999; Xiao *et al.*, 2002), increase expression of phospholipase D (Zhang *et al.*, 2000) to promote glucose transport (Viparelli *et al.*, 2008), and act as a scaffold to promote activation of RSK2 (Vaidyanathan *et al.*, 2007). This combination of activities suggests that high level expression of PEA-15 may enable nonproliferative cells to survive for extended periods. Notably, PEA-15 is expressed in astrocytes (Araujo *et al.*, 1993) that can give rise to neural stem cells, a cell population that is long lived yet minimally proliferative (Emsley *et al.*, 2005). Similarly, it is highly expressed in mammary epithelium and in some mammary cancers (Glading *et al.*, 2007), a tumor type that is prone to prolonged survival of micrometastases (Demicheli *et al.*, 1996). Our study has elucidated a specific biochemical mechanism whereby PEA-15 prolongs growth factor signaling, thereby activating the MAP kinase pathway and thus contributing to its extensive armamentarium of biological effects.

## ACKNOWLEDGMENTS

This work was supported by National Institutes of Health grants HL-57900 and AR-27214. J. H. is supported by predoctoral fellowship 0815309F from the American Heart Association.

## REFERENCES

Araujo, H., Danziger, N., Cordier, J., Glowinski, J., and Chneiweiss, H. (1993). Characterization of PEA-15, a major substrate for protein kinase C in astrocytes. *J. Biol. Chem.* 268, 5911–5920.

Bartholomeusz, C., Rosen, D., Wei, C., Kazansky, A., Yamasaki, F., Takahashi, T., Itamochi, H., Kondo, S., Liu, J., and Ueno, N. T. (2008). PEA-15 induces autophagy in human ovarian cancer cells and is associated with prolonged overall survival. *Cancer Res.* 68, 9302–9310.

Bera, T. K., Guzman, R. C., Miyamoto, S., Panda, D. K., Sasaki, M., Hanyu, K., Enami, J., and Nandi, S. (1994). Identification of a mammary transforming gene (MAT1) associated with mouse mammary carcinogenesis. *Proc. Natl. Acad. Sci. USA* 91, 9789–9793.

Cacace, A. M., Michaud, N. R., Therrien, M., Mathes, K., Copeland, T., Rubin, G. M., and Morrison, D. K. (1999). Identification of constitutive and Ras-inducible phosphorylation sites of KSR: implications for 14-3-3 binding, mi-

togen-activated protein kinase binding, and KSR overexpression. *Mol. Cell. Biol.* 19, 229–240.

Callaway, K., Abramczyk, O., Martin, L., and Dalby, K. N. (2007). The anti-apoptotic protein PEA-15 is a tight binding inhibitor of ERK1 and ERK2, which blocks docking interactions at the D-recruitment site. *Biochemistry* 46, 9187–9198.

Chou, F.-L., Hill, J. M., Hsieh, J.-C., Pouyssegur, J., Brunet, A., Glading, A., Uberall, F., Ramos, J. W., Werner, M. H., and Ginsberg, M. H. (2003). PEA-15 binding to ERK1/2 MAPKs is required for its modulation of integrin activation. *J. Biol. Chem.* 278, 52587–52597.

Condorelli, G., Vigliotta, G., Cafieri, A., Trencia, A., Andalo, P., Oriente, F., Miele, C., Caruso, M., Formisano, P., and Beguinot, F. (1999). PED/PEA-15, an anti-apoptotic molecule that regulates FAS/TNFR1-induced apoptosis. *Oncogene* 18, 4409–4415.

Condorelli, G., *et al.* (1998). PED/PEA-15 gene controls glucose transport and is overexpressed in type 2 diabetes mellitus. *EMBO J.* 17, 3858–3866.

Danziger, N., Yokoyama, M., Jay, T., Cordier, J., Glowinski, J., and Chneiweiss, H. (1995). Cellular expression, developmental regulation, and phylogenetic conservation of PEA-15, the astrocytic major phosphoprotein and protein kinase C substrate. *J. Neurochem.* 64, 1016–1025.

Demicheli, R., Abbattista, A., Miceli, R., Valagussa, P., and Bonadonna, G. (1996). Time distribution of the recurrence risk for breast cancer patients undergoing mastectomy: further support about the concept of tumor dormancy. *Breast Cancer Res. Treat.* 41, 177–185.

Downward, J. (1996). Control of ras activation. *Cancer Surv.* 27, 87–100.

Embury, J., *et al.* (2001). Proteins linked to a protein transduction domain efficiently transduce pancreatic islets. *Diabetes* 50, 1706–1713.

Emsley, J. G., Mitchell, B. D., Kempermann, G., and Macklis, J. D. (2005). Adult neurogenesis and repair of the adult CNS with neural progenitors, precursors, and stem cells. *Prog. Neurobiol.* 75, 321–341.

Eulenfeld, R., and Schaper, F. (2009). A new mechanism for the regulation of Gab1 recruitment to the plasma membrane. *J. Cell Sci.* 122, 55–64.

Formstecher, E., *et al.* (2001). PEA-15 mediates cytoplasmic sequestration of ERK MAP kinase. *Dev. Cell* 1, 239–250.

Gille, H., Strahl, T., and Shaw, P. E. (1995). Activation of ternary complex factor Elk-1 by stress-activated protein kinases. *Curr. Biol.* 5, 1191–1200.

Glading, A., Koziol, J. A., Krueger, J., and Ginsberg, M. H. (2007). PEA-15 inhibits tumor cell invasion by binding to extracellular signal-regulated kinase 1/2. *Cancer Res.* 67, 1536–1544.

Gotoh, N., Laks, S., Nakashima, M., Lax, I., and Schlessinger, J. (2004). FRS2 family docking proteins with overlapping roles in activation of MAP kinase have distinct spatial-temporal patterns of expression of their transcripts. *FEBS Lett.* 564, 14.

Hao, C., Beguinot, F., Condorelli, G., Trencia, A., Van Meir, E. G., Yong, V. W., Parney, I. F., Roa, W. H., and Petruk, K. C. (2001). Induction and intracellular regulation of tumor necrosis factor-related apoptosis-inducing ligand (TRAIL) mediated apoptosis in human malignant glioma cells. *Cancer Res.* 61, 1162–1170.

Hill, J. M., Vaidyanathan, H., Ramos, J. W., Ginsberg, M. H., and Werner, M. H. (2002). Recognition of ERK MAP kinase by PEA-15 reveals a common docking site within the death domain and death effector domain. *EMBO J.* 21, 6494–6504.

Hughes, P. E., Renshaw, M. W., Pfaff, M., Forsyth, J., Keivens, V. M., Schwartz, M. A., and Ginsberg, M. H. (1997). Suppression of integrin activation: a novel function of a Ras/Raf-initiated MAP kinase pathway. *Cell* 88, 521–530.

Hwang, S., Kuo, W. L., Cochran, J. F., Guzman, R. C., Tsukamoto, T., Bandyopadhyay, G., Myambo, K., and Collins, C. C. (1997). Assignment of HMAT1, the human homolog of the murine mammary transforming gene (MAT1) associated with tumorigenesis, to 1q21.1, a region frequently gained in human breast cancers. *Genomics* 42, 540–542.

Ishibe, S., Joly, D., Zhu, X., and Cantley, L. G. (2003). Phosphorylation-dependent paxillin-ERK association mediates hepatocyte growth factor-stimulated epithelial morphogenesis. *Mol. Cell* 12, 1275–1285.

Jacobs, D., Glossip, D., Xing, H., Muslin, A. J., and Kornfeld, K. (1999). Multiple docking sites on substrate proteins form a modular system that mediates recognition by ERK MAP kinase. *Genes Dev.* 13, 163–175.

Jensen, C. J., Buch, M.-B., Krag, T. O., Hemmings, B. A., Gammeltoft, S., and Frodin, M. (1999). 90-kDa Ribosomal S6 kinase is phosphorylated and activated by 3-phosphoinositide-dependent protein kinase-1. *J. Biol. Chem.* 274, 27168–27176.

- Kitsberg, D., Formstecher, E., Fauquet, M., Kubes, M., Cordier, J., Canton, B., Pan, G., Rolli, M., Glowinski, J., and Chneiweiss, H. (1999). Knock-out of the neural death effector domain protein PEA-15 demonstrates that its expression protects astrocytes from TNF $\alpha$ -induced apoptosis. *J. Neurosci.* *19*, 8244–8251.
- Kouhara, H., Hadari, Y. R., Spivak-Kroizman, T., Schilling, J., Bar-Sagi, D., Lax, I., and Schlessinger, J. (1997). A lipid-anchored Grb2-binding protein that links FGF-receptor activation to the Ras/MAPK signaling pathway. *Cell* *89*, 693–702.
- Krueger, J., Chou, F.-L., Glading, A., Schaefer, E., and Ginsberg, M. H. (2005). Phosphorylation of phosphoprotein enriched in astrocytes (PEA-15) regulates extracellular signal-regulated kinase-dependent transcription and cell proliferation. *Mol. Biol. Cell* *16*, 3552–3561.
- Lax, I., Wong, A., Lamothe, B., Lee, A., Frost, A., Hawes, J., and Schlessinger, J. (2002). The docking protein FRS2 $\alpha$  controls a MAP kinase-mediated negative feedback mechanism for signaling by FGF receptors. *Mol. Cell* *10*, 709–719.
- Lin, Y., Zhang, J., Zhang, Y., and Wang, F. (2007). Generation of an FRS2 $\alpha$  conditional null allele. *Genesis* *45*, 554–559.
- Lovric, J., Dammeier, S., Kieser, A., Mischak, H., and Kolch, W. (1998). Activated Raf induces the hyperphosphorylation of stathmin and the reorganization of the microtubule network. *J. Biol. Chem.* *273*, 22848–22855.
- Morrison, D. K., and Davis, R. J. (2003). Regulation of MAP kinase signaling modules by scaffold proteins in mammals. *Annu. Rev. Cell Dev. Biol.* *19*, 91–118.
- Muller, J., Ory, S., Copeland, T., Pivnicka-Worms, H., and Morrison, D. K. (2001). C-TAK1 regulates Ras signaling by phosphorylating the MAPK scaffold, KSR1. *Mol. Cell* *8*, 983–993.
- Quilliam, L. A., Zhong, S., Rabun, K. M., Carpenter, J. W., South, T. L., Der, C. J., and Campbell-Burk, S. (1995). Biological and structural characterization of a Ras transforming mutation at the phenylalanine-156 residue, which is conserved in all members of the Ras superfamily. *Proc. Natl. Acad. Sci. USA* *92*, 1272–1276.
- Ramos, J. W., Hughes, P. E., Renshaw, M. W., Schwartz, M. A., Formstecher, E., Chneiweiss, H., and Ginsberg, M. H. (2000). Death effector domain protein PEA-15 potentiates Ras activation of extracellular signal receptor-activated kinase by an adhesion-independent mechanism. *Mol. Biol. Cell* *11*, 2863–2872.
- Renault, F., Formstecher, E., Callebaut, I., Junier, M. P., and Chneiweiss, H. (2003). The multifunctional protein PEA-15 is involved in the control of apoptosis and cell cycle in astrocytes. *Biochem. Pharmacol.* *66*, 1581–1588.
- Renganathan, H., Vaidyanathan, H., Knapinska, A., and Ramos, J. W. (2005). Phosphorylation of PEA-15 switches its binding specificity from ERK/MAPK to FADD. *Biochem. J.* *390*, 729–735.
- Sharif, A., Renault, F., Beuvon, F., Castellanos, R., Canton, B., Barbeito, L., Junier, M. P., and Chneiweiss, H. (2004). The expression of PEA-15 (phosphoprotein enriched in astrocytes of 15 kDa) defines subpopulations of astrocytes and neurons throughout the adult mouse brain. *Neuroscience* *126*, 263–275.
- Shimizu, K., Kaibuchi, K., Nonaka, H., Yamamoto, J., and Takai, Y. (1991). Tissue and subcellular distributions of an inhibitory GDP/GTP exchange protein (GDI) for the rho proteins by use of its specific antibody. *Biochem. Biophys. Res. Commun.* *175*, 199–206.
- Teis, D., Wunderlich, W., and Huber, L. A. (2002). Localization of the MP1-MAPK scaffold complex to endosomes is mediated by p14 and required for signal transduction. *Dev. Cell* *3*, 803–814.
- Torii, S., Kusakabe, M., Yamamoto, T., Maekawa, M., and Nishida, E. (2004). Sef is a spatial regulator for Ras/MAP kinase signaling. *Dev. Cell* *7*, 33–44.
- Tsukamoto, T., *et al.* (2000). Expression of MAT1/PEA-15 mRNA isoforms during physiological and neoplastic changes in the mouse mammary gland. *Cancer Lett.* *149*, 105–113.
- Underhill, D. A., Vogan, K. J., Underhill, T. M., and Gros, P. (2001). Identification of a novel, alternatively spliced isoform and single nucleotide polymorphisms in the murine Pea-15 gene. *Mamm. Genome* *12*, 172–174.
- Vaidyanathan, H., Opoku-Ansah, J., Pastorino, S., Renganathan, H., Matter, M. L., and Ramos, J. W. (2007). ERK MAP kinase is targeted to RSK2 by the phosphoprotein PEA-15. *Proc. Natl. Acad. Sci. USA* *104*, 19837–19842.
- Vaidyanathan, H., and Ramos, J. W. (2003). RSK2 activity is regulated by its interaction with PEA-15. *J. Biol. Chem.* *278*, 32367–32372.
- Viparelli, F., *et al.* (2008). Targeting of PED/PEA-15 molecular interaction with phospholipase D1 enhances insulin sensitivity in skeletal muscle cells. *J. Biol. Chem.* *283*, 21769–21778.
- Whitehurst, A. W., Robinson, F. L., Moore, M. S., and Cobb, M. H. (2004). The death effector domain protein PEA-15 prevents nuclear entry of ERK2 by inhibiting required interactions. *J. Biol. Chem.* *279*, 12840–12847.
- Wu, Y., Chen, Z., and Ullrich, A. (2003). EGFR and FGFR signaling through FRS2 is subject to negative feedback control by ERK1/2. *Biol. Chem.* *384*, 1215–1226.
- Xiao, C., Yang, B. F., Asadi, N., Beguinot, F., and Hao, C. (2002). Tumor necrosis factor-related apoptosis-inducing ligand-induced death-inducing signaling complex and its modulation by c-FLIP and PED/PEA-15 in glioma cells. *J. Biol. Chem.* *277*, 25020–25025.
- Zhang, Y., Redina, O., Altshuller, Y. M., Yamazaki, M., Ramos, J., Chneiweiss, H., Kanaho, Y., and Frohman, M. A. (2000). Regulation of expression of phospholipase D1 and D2 by PEA-15, a novel protein that interacts with them. *J. Biol. Chem.* *275*, 35224–35232.
- Zhou, M., Horita, D. A., Waugh, D. S., Byrd, R. A., and Morrison, D. K. (2002). Solution structure and functional analysis of the cysteine-rich C1 domain of kinase suppressor of Ras (KSR). *J. Mol. Biol.* *315*, 435–446.