

RESEARCH

Open Access

Effect of prolonged exposure to diesel engine exhaust on proinflammatory markers in different regions of the rat brain

Miriam E Gerlofs-Nijland¹, Damien van Berlo², Flemming R Cassee¹, Roel PF Schins², Kate Wang³ and Arezoo Campbell*³

Abstract

Background: The etiology and progression of neurodegenerative disorders depends on the interactions between a variety of factors including: aging, environmental exposures, and genetic susceptibility factors. Enhancement of proinflammatory events appears to be a common link in different neurological impairments, including Alzheimer's disease, Parkinson's disease, amyotrophic lateral sclerosis, and multiple sclerosis. Studies have shown a link between exposure to particulate matter (PM), present in air pollution, and enhancement of central nervous system proinflammatory markers. In the present study, the association between exposure to air pollution (AP), derived from a specific source (diesel engine), and neuroinflammation was investigated. To elucidate whether specific regions of the brain are more susceptible to exposure to diesel-derived AP, various loci of the brain were separately analyzed. Rats were exposed for 6 hrs a day, 5 days a week, for 4 weeks to diesel engine exhaust (DEE) using a nose-only exposure chamber. The day after the final exposure, the brain was dissected into the following regions: cerebellum, frontal cortex, hippocampus, olfactory bulb and tubercles, and the striatum.

Results: Baseline levels of the pro-inflammatory cytokines tumor necrosis factor alpha (TNF- α) and interleukin-1 alpha (IL-1 α) were dependent on the region analyzed and increased in the striatum after exposure to DEE. In addition, baseline level of activation of the transcription factors (NF- κ B) and (AP-1) was also region dependent but the levels were not significantly altered after exposure to DEE. A similar, though not significant, trend was seen with the mRNA expression levels of TNF- α and TNF Receptor-subtype I (TNF-RI).

Conclusions: Our results indicate that different brain regions may be uniquely responsive to changes induced by exposure to DEE. This study once more underscores the role of neuroinflammation in response to ambient air pollution, however, it is valuable to assess if and to what extent the observed changes may impact the normal function and cellular integrity of unique brain regions.

Background

There is an association between chronic exposure to combustion-related fine particles (present in air pollution) and an increased risk of mortality attributed to lung cancer and cardiopulmonary causes [1]. One of the major contributors to particulate air pollution is diesel engine exhaust. As diesel fuel undergoes combustion in automobile engines, it produces particles of different sizes, chemical composition, and physical characteristics [2].

Because of the substantial number of epidemiological studies showing a link between exposure to air pollution and adverse cardiovascular changes, the need for air quality controls and suggestions for future research has been addressed [3]. Recent studies show that the cardiopulmonary system may not be the only vulnerable target adversely affected by air pollution. The brain may be another potential target [4,5].

In a prospective birth cohort study, the association between exposure to black carbon, which is a surrogate for traffic-related particles, and cognition among children was assessed. The authors discovered that higher expo-

* Correspondence: acampbell@westernu.edu

³ Pharmaceutical Sciences, College of Pharmacy, Western University of Health Sciences, 309 E. Second Street, Pomona, California 91766-1854, USA
Full list of author information is available at the end of the article

sure to black carbon was associated with a decline in cognitive function [6]. Children may not be the only sensitive subpopulation since mild cognitive impairment, associated with long-term exposure to traffic-related particulate air pollution, was also identified in elderly women [7]. These observed changes in cognitive function may be related to alteration in brain activity. Indeed, in human volunteers, brain activity assessed by quantitative electroencephalography, was altered after short-term exposure to diesel engine exhaust [8]. Although it is not known exactly how exposure to ambient air pollution or more specifically, diesel engine exhaust, may alter human brain function, studies indicate that neuroinflammation may play a role.

One of the first studies which pointed towards the potential adverse central nervous system (CNS) effects of air pollution showed that in dogs living in polluted areas of Mexico City, there is an increase in cerebral inflammation [9]. In a later study, using human post-mortem tissue, it was discovered that markers of both neuroinflammation and Alzheimer's disease (AD) pathology are increased in residents living in high (compared to low) pollution cities [10]. In a recent study, the same investigators have validated their earlier findings by showing enhanced neuroinflammation, altered blood-brain barrier characteristics, and particulate deposition in the brain of children and young adults living in cities with high air pollution [11]. In addition, a few toxicological studies in rodents have been published that support these findings. Exposure to ambient particles, present in urban air pollution, enhances neuroinflammatory markers in the brain of mouse models [4,12-14].

In the present study, rats were exposed to diesel engine exhaust (a major contributor to ambient air pollution) to examine neuroinflammatory changes in different brain regions. We hypothesized that the accompanying neuroinflammatory response will be variable in specific brain areas.

Materials and methods

Animals

Male Fischer F344/DUCRL rats (15-16 wks old) were obtained from Charles River (Sulzfeld, Germany). The rats were randomly allocated to either control or DEE exposure group ($n = 15/\text{group}$) and acclimatized for 7 days. Experiments were approved by the Animal Ethics Committee (IUCAC) of the Dutch National Vaccine Institute (NVI, Bilthoven, Netherlands).

Exposure and characterization of test atmosphere

All animals were exposed in whole body inhalation chambers to 0.4 ppm ozone for 12 hrs before initiating the diesel engine exhaust (DEE) exposures. The work described in this paper is an extension of another study aimed at

evaluating the effect of prolonged exposure to traffic related particulate matter (PM) on the cardiopulmonary system. These cardiopulmonary effects were studied in the presence of a mild inflammation status induced by ozone [15]. Nose-only exposure to DEE began the next day and continued for 4 wks, 5 days/wk for 6 hrs a day. Control animals were exposed to conditioned, purified and HEPA filtered air with the same temperature and relative humidity as the test atmosphere. Diluted DEE was obtained by mixing freshly generated exhaust from an idling diesel engine (35 KVA Genset, 1500 rpm) with purified air. Particle number and mass concentration were measured continuously in the inlet of the exposure chamber using a condensation particle counter (CPC model 3022A, TSI St. Paul, Minn., USA) or a nephelometer (DATARAM 2000, MIE, Billerica, Mass., USA) respectively. Time-integrated particle concentrations were determined by gravimetric analysis. A carbon sampler tube was placed downstream of one of the PolyTetra-FluoroEthylene filters at the outlet to collect the volatile organic compounds (VOC), which were measured by means of GC-MS. The final particle mass concentration in diluted DEE was $173 \mu\text{g}/\text{m}^3$ with a geometric median diameter of 76 nm and geometric standard deviation of 5 nm. Total VOC content was $529 \mu\text{g}/\text{m}^3$. The concentrations of CO, NO, and NO₂, NO_x measured in the mixing chamber were on average 2.6 ppm CO, 0.08 ppm NO, 1.3 ppm NO₂ and 0.5 ppm NO_x. These are levels that people will experience in tunnels, workplace or at traffic hot spots.

Necropsy

Animals were sacrificed 24 hrs after the last exposure. The brain of 10 animals per group was carefully excised and the following regions were dissected on ice: olfactory bulbs and tubercles, striatum, hippocampus, cortex, and the cerebellum. A subset of these samples ($n = 5$) was used for the ELISA and gel shift mobility assays and another subset ($n = 5$) was used for the RNA isolation and quantitative PCR analysis.

Sample preparation for ELISA and gel shift mobility assays

Cytoplasmic and nuclear protein fractions were prepared using the method of Lahiri and Ge [16]. Tissue was weighed and homogenized in ice-cold buffer consisting of (10 mM HEPES (pH 7.9), 10 mM KCl, 0.1 mM EDTA, 0.1 mM EGTA, 1 mM DTT, 0.5 mM PMSF and 0.5% NP-40). The suspension was incubated on ice for 10 min and centrifuged ($4000 \times g$) at 4°C for 1 min. The supernatant containing the cytoplasmic constituents was collected and protease inhibitor was added. Aliquots of samples were stored at -80°C. The nuclear pellet was resuspended in a buffer composed of (20 mM HEPES pH 7.9, 400 mM NaCl, 1 mM DTT, 1 mM EDTA, 1 mM EGTA and 1 mM

PMSF). The samples were then centrifuged ($11,000 \times g$) for 5 min at 4°C . The supernatant (which is the nuclear extract) was collected, protease inhibitor was added, and aliquots were prepared and stored at -80°C .

Competitive Enzyme Immunoassay

Levels of TNF- α and IL-1 α were determined using immunoassay kits from Biosource (Camarillo CA), for the detection of the total protein in the cytoplasmic tissue fractions. Briefly, 50 μl of the sample was added to plates pre-coated with an antibody specific for either rat TNF- α or rat IL-1 α . After the addition of a Biotinylated secondary antibody, the plates were washed and incubated with streptavidin-Peroxidase. After another wash, a substrate solution was added and the color generated was determined with a spectrophotometric plate reader set at 450 nm.

Electrophoretic Mobility Shift Assay

This assay was utilized to determine the extent of NF- κB and AP-1 activation in the nuclear fractions using a protocol developed by Promega (Madison WI). The amount of protein in 2 μl of the nuclear extract was determined by the BCA protein assay kit (Pierce, Rockford, IL) and 25 μg of each sample, incubated with ^{32}P -labeled oligonucleotides containing the NF- κB or AP-1 consensus sequence, was loaded onto a gel. A negative control containing no cell extract, as well as competitor reactions were run simultaneously with the samples. The specific competitor contained unlabelled NF- κB or AP-1 consensus nucleotide while the nonspecific competitor contained unlabelled SP-1 consensus oligonucleotide. The competitor reactions also contained 1 g of HELA cell extract (positive control). X-ray films were manually developed. The mean intensity of each band was measured and quantitated using a Kodak 1500 gel logic imaging system.

Analysis of mRNA

Total RNA was isolated from the various brain tissue regions using the TRIzol Plus RNA Purification Kit (Invitrogen, Carlsbad, CA). The mRNA levels of TNF- α and TNF-RI were determined by quantitative RT-PCR. RNA was purified using the RNeasy[®] mini kit coupled to treatment with DNase (RNase-free DNase set, Qiagen). The purity and amount obtained were determined by spectrophotometry at wave lengths of 230, 260, 280, and 320 nm. From 0.5 μg RNA, cDNA was synthesized using the iScript cDNA Synthesis kit (BioRad, CA, USA) and used for qRT-PCR at a $15 \times$ dilution in RNase-free water. PCR primers for TNF- α , TNF-RI and the housekeeping gene HPRT were designed using Primer express software (Applied Biosystems). Real time PCR was performed employing a MyIQ Single Color real time PCR detection

system (BioRad) coupled to SYBR[®] Green Supermix (Bio-rad), added to the system along with $15 \times$ diluted cDNA and 0.3 μM forward and reverse primers. During the PCR reaction, a denaturation step at 95°C for 3 min was followed by 40 cycles at 95°C (15 seconds) and 60°C (45 seconds). To ascertain that the correct product was amplified, a melt curve ($60\text{--}95^{\circ}\text{C}$) was produced. The efficiencies of all primer sets were tested by the generation of cDNA dilution curves. Obtained data was analyzed using MyIQ software (BioRad) and expressed as fold increase compared to the lowest expression in non-treated controls [17].

Statistical Analysis

Differences between the exposure groups were tested using analysis of variance (ANOVA). Pairwise comparisons were tested using the Tukey method.

Results

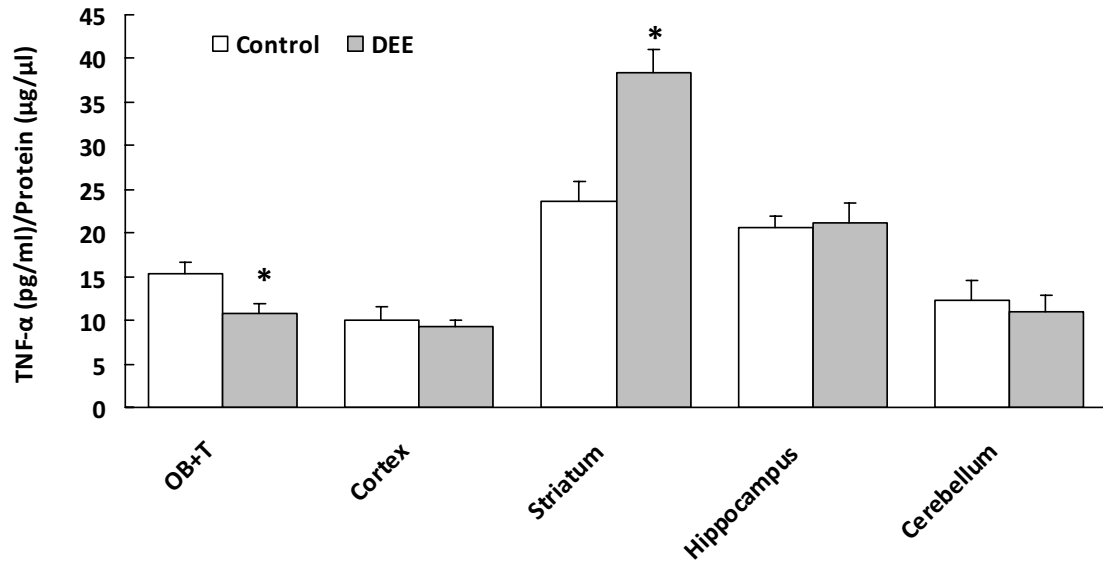
Cytokine Levels

Basal levels for both TNF- α and IL-1 α were detected in all brain regions and varied depending on the specific area analyzed (Figure 1). The levels of the proinflammatory cytokines TNF- α and IL-1 α were measured in the cytoplasmic fractions derived from the following brain regions: olfactory bulb and the tubercles (OB+T), cortex, striatum, hippocampus, and cerebellum. The levels of TNF- α were slightly (but significantly) decreased in the OB+T after exposure to DEE, but there were no changes in the levels of IL-1 α in this region. However, in the striatum, there was a pronounced increase in the levels of both proinflammatory cytokines. There were no changes in the levels of these two proinflammatory cytokines in the cortex, hippocampus, or cerebellum, after exposure to DEE.

Transcription factor activation

The transcription factor NF- κB is an immunologically relevant transcription factor and upon activation, promotes the transcription of a variety of immunomodulatory factors including TNF- α . The levels of activated NF- κB were assessed in the nuclear fractions derived from the olfactory bulb and the tubercles (OB+T), cortex, striatum, hippocampus, and cerebellum. DEE exposure did not alter the levels of this transcription factor (Figure 2). When the basal levels of NF- κB were evaluated, there were evident regional variations (Figure 3). The cortex had the lowest while the OB+T showed the highest constitutive activity. The regional variation in baseline activity was more pronounced for AP-1 (Figure 4A). Again, the OB+T showed the highest while the cerebellum had the lowest basal activity (Figure 4B). DEE exposure did not alter the levels of AP-1 (Figure 4C) in any of the regions analyzed. It should be noted that the regional dif-

A.



B.

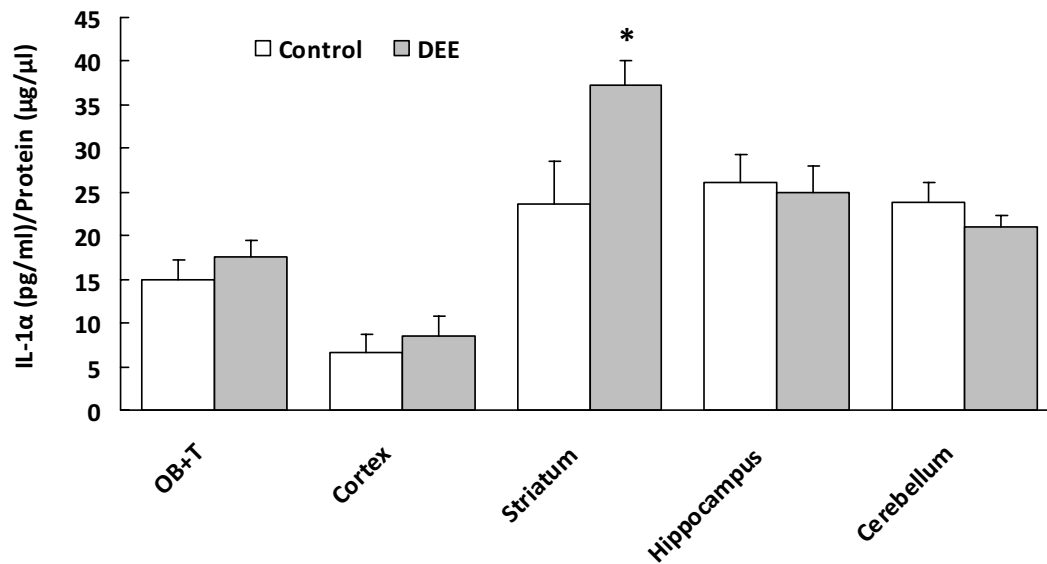


Figure 1 Pro-inflammatory cytokine levels. A. Levels of TNF- α in different regions of the rat brain after exposure to filtered air (Control) or DEE (Diesel-exposed). Values given as mean \pm SE; n = 5; *p < 0.05 compared to control. OB+T = olfactory bulb and the tubercles. **B.** Levels of IL-1 α in different regions of the rat brain after exposure to purified air (Control) or DEE (Diesel-exposed). Values given as mean \pm SE; n = 5; *p < 0.05 compared to control. OB+T = olfactory bulb and the tubercles.

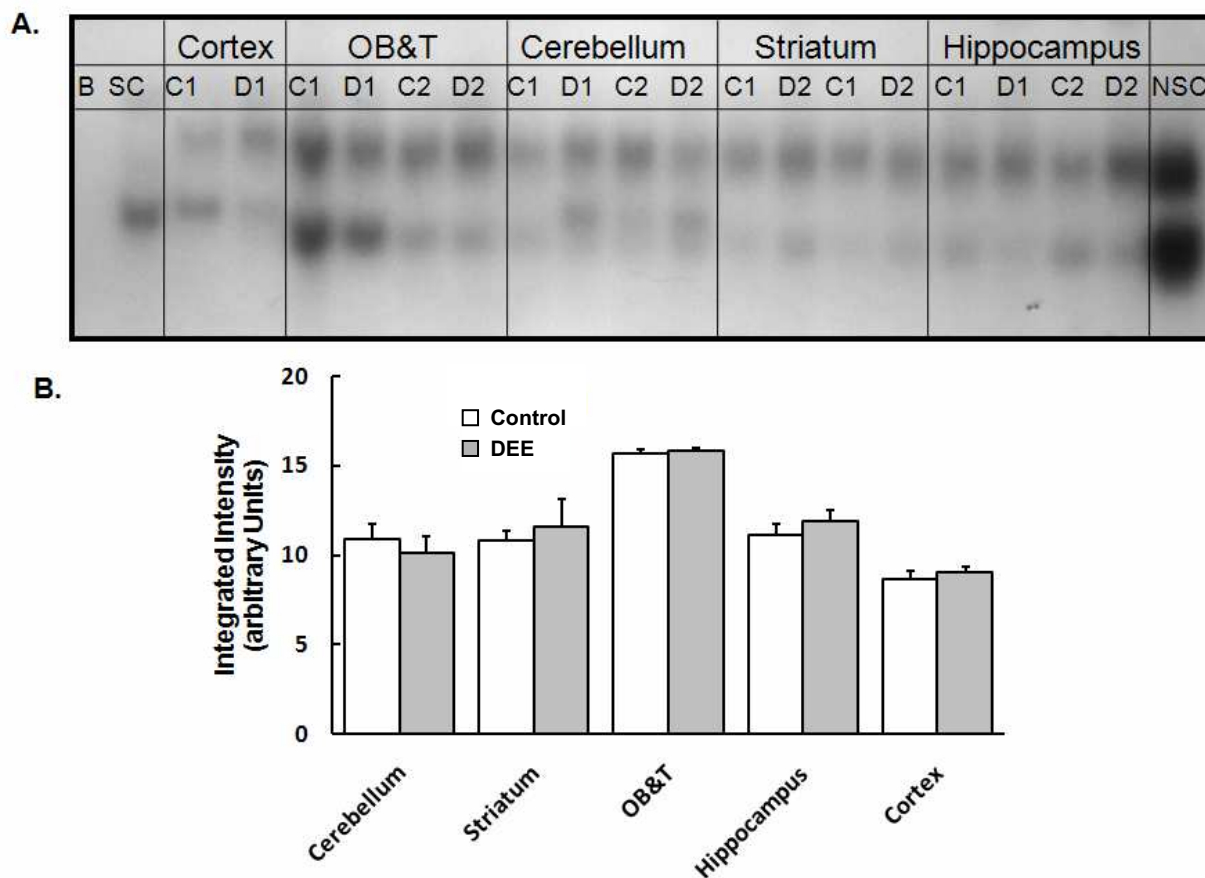


Figure 2 NF-κB activation after DEE exposure. A. A gel demonstrating NF-κB shifted bands. Samples from different brain regions were assayed on the same gel. Based on the competitor reactions, the top band is specific for NF-κB. B = Blank; SC = Specific competitor; NSC = Non-specific competitor; C = nuclear fraction derived from the brain of animals exposed to filtered air; D = nuclear fractions derived from the brain of animals exposed to DEE; the results for two separate animals (designated as 1 or 2) are shown on this gel. **B.** The sum intensity of NF-κB specific shifted band (first band shown above) in different regions of the rat brain after exposure to purified air (Control) or DEE (Diesel). Each brain region was analyzed on different days on separate gels and therefore this figure does not allow direct comparison between various brain regions. Bars represent mean of 5 individual animals \pm SE.

ferences in the 'basal' levels of transcription factor activity may have been modulated by the ozone pretreatment conducted before the initiation of the DEE exposures.

mRNA levels for TNF- α and TNF-RI

Since the TNF- α protein level was modified in specific brain regions after DEE exposures, the expression of mRNA levels for TNF- α was determined in various regions of rat brains. There was again a difference in basal expression and the striatum showed the lowest, while the hippocampus had the highest constitutive expression of the cytokine (Figure 5A). After exposure to diesel exhaust, there was no difference in mRNA levels for this proinflammatory cytokine in any of the brain regions analyzed. We also assessed the levels of TNF receptor subtype I (TNF-RI) in specific brain regions and exposure

to DEE did not modify the levels of the receptor in any of the brain areas analyzed (Figure 5B).

Discussion

Air pollution is a complex mixture of gases and particulate matter. DEE contributes substantially to combustion-derived nanoparticles which are an important component of air pollution [2]. In some urban areas, the air quality is so poor that the threshold considered 'safe' is consistently surpassed. In such environments, exposure to ambient air pollution and the possibility of adverse human health effects is a realistic cause for concern. While the connection between exposure to particulate matter and harmful cardiopulmonary effects has been reasonably well established [18,19], there is growing evidence that the CNS may be another target [5]. In the

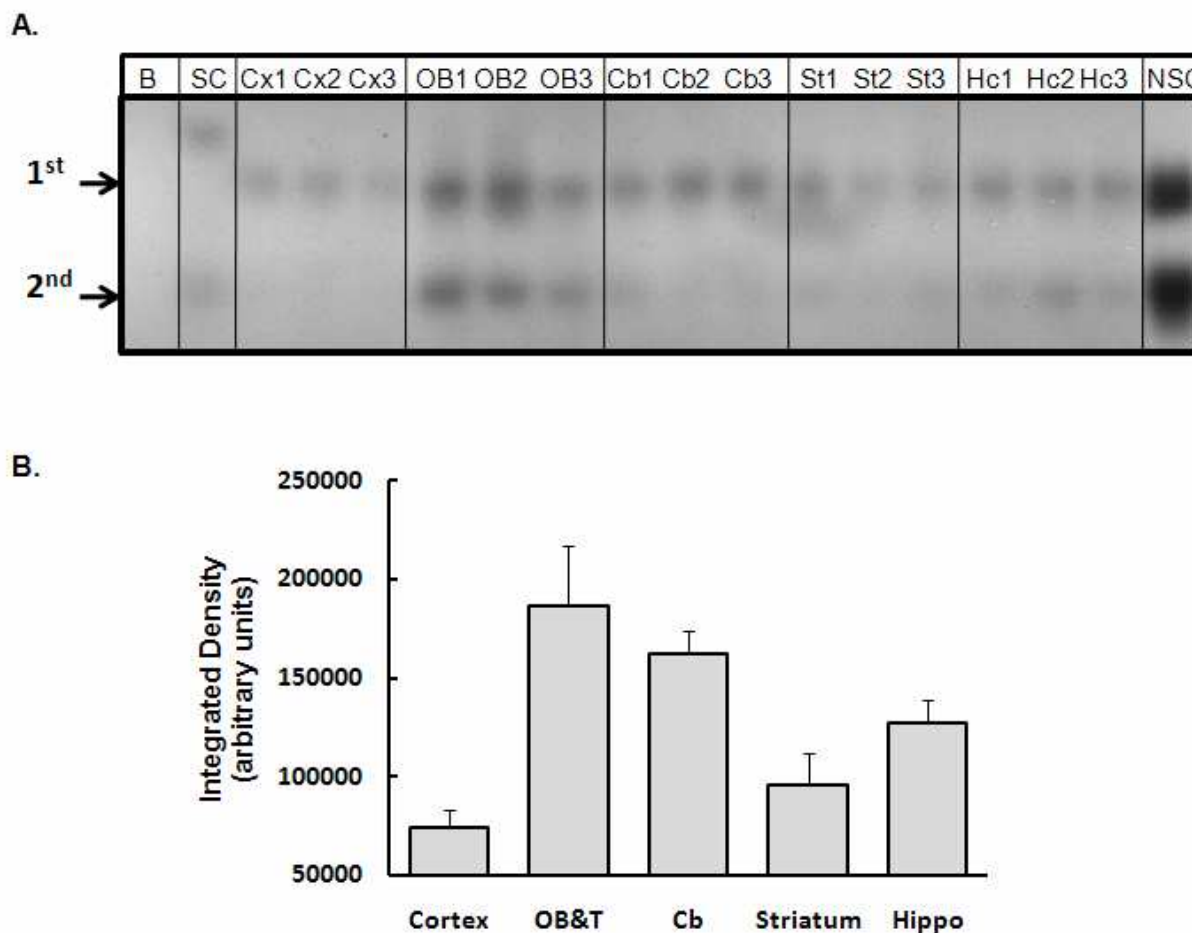


Figure 3 Basal levels of NF-κB activation. A. A typical gel showing the NF-κB specific shifted bands for three separate control samples (designated as 1, 2, or 3). B = Blank; SC = Specific competitor; NSC = Non-specific competitor; Cx = cortex; OB = olfactory bulbs and tubercles; Cb = cerebellum; St = striatum; Hc = hippocampus. All brain regions were analyzed on the same gel and under the same conditions to allow direct comparison between regions. B. The sum intensity of the first shifted band. OB&T = olfactory bulbs and the tubercles; Cb = cerebellum; Hippo = hippocampus.

present study we demonstrate that prolonged exposure to moderate levels of DEE increased TNF-α and IL-1α protein levels specifically in the striatum of rat brains. However, none of the measured transcription factors (NF-κB and AP-1) or the mRNA levels of TNF-α and TNF-R1 were affected after DEE exposure.

Numerous studies show that upregulation of markers associated with neuroinflammation may be either beneficial or harmful. For instance, TNF-α and TNF-R1 have been shown to be involved in both neuroprotection [20] as well as neurodegeneration [21]. This dichotomy in TNF-α-related pathways may be attributed to the intensity [22] or CNS location [23] of neuroinflammation. The striatal dopaminergic system may be more vulnerable to adverse consequences of TNF-α production. As an example, in TNF receptor deficient mice, there is less striatal dopaminergic cell death induced by 1-methyl-4-phenyl-

1,2,3,6-tetrahydropyridine (MPTP), a selective toxin for dopaminergic cells [24].

TNF-α levels are increased in the striatum and cerebrospinal fluid of Parkinson's disease patients when compared to controls [25]. Furthermore, several studies show that certain TNF-α polymorphisms in genotype or promoter sequences increase the risk for Parkinson's disease [26-28]. Our finding that exposure to DEE increases TNF-α selectively in the striatum may suggest that such environmental exposures may further aggravate factors associated with neurodegenerative disorders such as Parkinson's disease.

In the rat brain, the levels of transcription factor activity and cytokines were different depending on the region analyzed (Table 1). It is possible that the ozone pretreatment influenced this 'baseline' transcription factor activity. However, since the ozone exposure was conducted

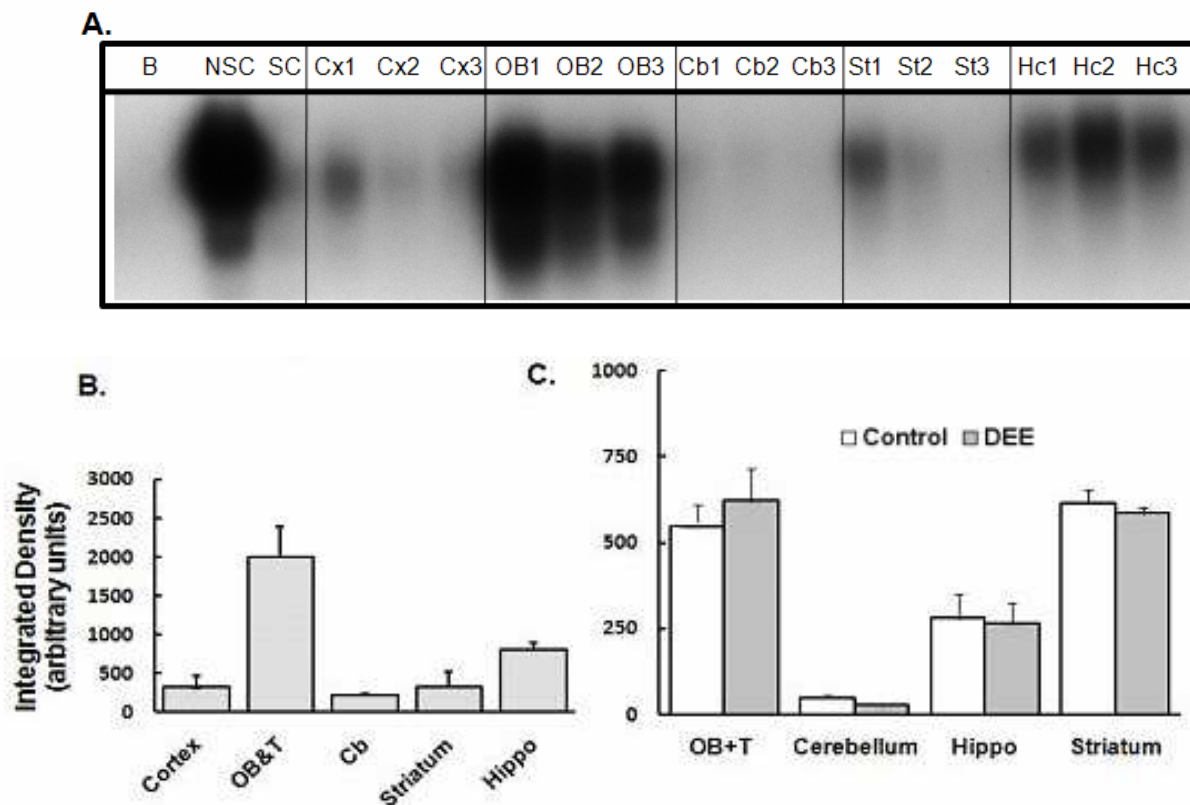
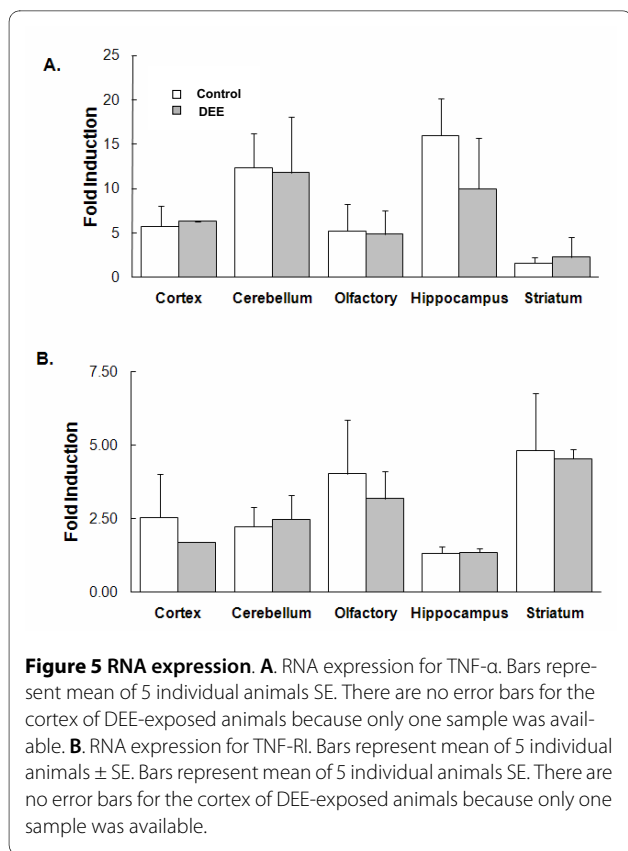


Figure 4 AP1 activation. **A.** A typical gel showing the AP-1 specific shifted band for three separate control samples (designated as 1, 2, or 3). B = Blank; SC = Specific competitor; NSC = Non-specific competitor; Cx = cortex; OB = olfactory bulbs and tubercles; Cb = cerebellum; St = striatum; Hc = hippocampus. All brain regions were analyzed on the same gel and under the same conditions to allow direct comparison between regions. **B.** The sum intensity of the shifted band. OB+T = olfactory bulbs and the tubercles; Cb = cerebellum; Hippo = hippocampus. **C.** The sum intensity of AP-1 specific shifted band in different regions of the rat brain after exposure to purified air (Control) or DEE (Diesel). Each brain region was analyzed on different days on separate gels and therefore this figure does not allow direct comparison between various brain regions. Bars represent mean of 5 individual animals \pm SE.

four weeks prior to tissue harvesting, it is likely that the ozone effects may be negligible at this time point. The region-specific activation state of transcription factors may be related to the unique cellular and molecular composition and function of different brain regions. For example, the olfactory bulb is a region where progenitor cells can give rise to new neurons [29] and this may underlie the high basal level of AP-1 and NF- κ B activity detected. Indeed, it has been shown that a subunit of AP-1 (DeltaFosB) is upregulated after insult-induced neurogenesis and induces proliferation of neuronal precursor cells after injury [30]. NF- κ B activity has been associated with neurogenesis and neuronal survival through anti-apoptotic gene expression although this transcription factor has also been implicated in neurodegeneration attributed to its proinflammatory characteristics. It appears that the intensity and cell type location of NF- κ B activity determines its propensity to induce neuroprotection or neurotoxicity [31]. Although the protein levels of TNF- α and IL-1 α were increased in the striatum of DEE-

exposed rats, the levels of NF- κ B activation (a factor which promotes transcription of immune-related genes) or TNF- α and TNF-R1 RNA expression were unchanged. This may be due to homeostatic regulation of gene expression for the cytokines to protect against uncontrolled neuroinflammation. However, it may also be possible that the change in proinflammatory cytokine levels is mediated by systemic responses after exposure to DEE and the cytokines are entering the brain from peripheral sources. Exposure to particles derived from ambient air pollution increases inflammatory processes in the lungs [32,33] and intratracheal instillation of washed diesel exhaust particles can aggravate lung and systemic inflammation in mice [34]. Therefore, we cannot exclude that the proinflammatory cytokine changes in the CNS are due to systemic inflammation. However, we did not observe signs of increased inflammation in the lungs of the animals after DEE exposure (data not shown).

The CNS effects reported in this study may be direct. The route of exposure to PM is via inhalation, and thus



there is a potential for compounds to rapidly enter the brain through the cribriform plate of the ethmoid bone after deposition in the olfactory epithelium. This could then lead to direct activation of innate immune responses in the CNS. For inhaled manganese, the olfactory route has been shown to allow access of this metal into the brain [35,36]. It is also possible for inhaled particles to

indirectly enter the brain through the circulation. In humans, inhaled radiolabeled particles in the ultrafine size range entered the systemic circulation and were detected in extrapulmonary organs [37]. The same scenario was observed in rats exposed to inhaled nano-sized silver particles [38]. The BBB is formed by tight junctions between endothelial cells comprising cerebral microvasculature. The stringent regulation imposed by the BBB prevents harmful factors present in the peripheral circulation from entering cerebral tissue. Exposure to TNF- α has been shown to increase the levels of the transporter protein P-glycoprotein which is thought to tighten the BBB by increasing the efflux of compounds out of the CNS [39]. Diesel exhaust particles dose-dependently upregulate P-glycoprotein levels and activity in isolated rat brain capillaries. This effect was dependent on TNF- α released after exposure to DEP [40]. Therefore, in our study, the increase in TNF- α detected in the striatum may be a protective effect to increase efflux of particulates from the CNS. We did not directly measure neuronal cell death and thus we cannot ascertain that the DEE-induced increase in these proinflammatory cytokines is harmful or protective.

The concept that gene-environment interactions play an important role in the causation and progression of chronic neurodegenerative diseases has received much attention in the past few years. Exposure to combustion-related compounds, present in air pollution, increases proinflammatory cytokines in the striatum of rats, and may be an environmental stress factor which contributes to neuronal cell death in this region. This may be especially important if genetic susceptibility factors are present. It has been shown that although cultured human microglial cells, derived from different individuals, show

Table 1: Basal levels of transcription factor activation, mRNA expression, and protein levels in different regions of the rat brain.

Brain Regions	Transcription Factor		RNA		Protein	
	NF- κ B	AP-1	TNF- α	TNFR1	TNF α	IL-1 α
OB+T	+++	+++	+	+	+ / +++	++
Cortex	+	+	+	+	+	+
Striatum	+ / +++	+	+	+	++	++ / +++
Hippocampus	++	++	+ / +++	+	++	++ / +++
Cerebellum	++ / +++	+	+ / +++	+	+ / +++	++ / +++

For comparison purposes, values are designated as (+ = low; ++ = medium; or +++ = high) based on arbitrary assessment between groups for each marker.

similar basal gene expression profiles (for many cytokines, chemokines, and growth factors) treatment with TNF- α leads to a completely different response depending on the individual source of the microglia [41]. Similar to this finding, it may be possible that there are individual differences in CNS inflammatory responses after exposure to DEE. Further studies are warranted before it can be concluded with certainty that prolonged exposure to components of air pollution may contribute to neuronal cell loss and whether genetic susceptibility factors may modulate this effect.

Conclusion

In the present study we have shown that prolonged exposure to DEE induced a neuroinflammatory response in the rat brain in a region-specific manner. The inflammatory changes were assessed 24 hr post exposure and it is possible that this effect was transient. However, in a mouse model, neuroinflammatory markers were present two weeks after exposure to particulate matter [12] and thus it appears that the CNS effects are long-lasting although, species differences and PM sources need to be considered. To what extent the DEE-induced enhancement of inflammatory markers may lead to neurotoxicity or contribute to the progression of neurodegenerative diseases needs to be further evaluated and is the focus of our future research.

Competing interests

The authors declare that they have no competing interests.

Authors' contributions

MEGN has designed, coordinated and supervised the *in vivo* experimental work of this study, participated in the interpretation of the results and is co-writer of the manuscript. DvB participated in the mRNA analyses and interpretation of these data. FRC participated in conceiving the study, its design, interpretation of the results and is co-writer of the manuscript. RPF5 participated in the mRNA analyses and interpretation of the results. KW participated in the ELISA, gel shift mobility assays and interpretation of the results. AC participated in the design and coordination of the study, processed the data including table and figures, carried out the statistical analysis, interpreted the results and drafted the manuscript. All authors have read, reviewed, commented and approved the final manuscript.

Acknowledgements

We would like to thank the technicians John Boere, Daan Leseman and Paul Fokkens from the National Institute for Public Health and the Environment (RIVM) for their excellent contribution to the *in vivo* experiments including exposures. This work was supported by funds from the RIVM, Centre for Environmental Health, Bilthoven, Netherlands, Western University of Health sciences, California, USA, and the German Federal Ministry for the Environment (BMU). This work has been presented in part at the Inhaled Particles X Conference in 2008.

Author Details

¹Centre for Environmental Health, National Institute for Public Health and the Environment (RIVM), Bilthoven, the Netherlands, ²Institut für umweltmedizinische Forschung (IUF) at the Heinrich-Heine-University, Düsseldorf, Germany and ³Pharmaceutical Sciences, College of Pharmacy, Western University of Health Sciences, 309 E. Second Street, Pomona, California 91766-1854, USA

Received: 27 January 2010 Accepted: 17 May 2010

Published: 17 May 2010

References

1. Pope CA, Burnett R, Thun MJ, Calle EE, Krewski D, Ito K, Thurston JD: **Lung cancer, cardiopulmonary mortality, and long-term exposure to fine particulate air pollution.** *JAMA* 2002, **287**:1132-1141.
2. Donaldson K, Tran L, Jimenez LA, Duffin R, Newby DE, Mills N, MacNee W, Stone V: **Combustion-derived nanoparticles: a review of their toxicology following inhalation exposure.** *Particle Fibre Toxicol* 2005, **2**:10.
3. Brook RD, Franklin B, Cascio W, Hong Y, Howard G, Lipsett M, Luepker R, Mittleman M, Samet J, Smith S, Tager I: **Air pollution and cardiovascular disease.** *Circulation* 2004, **109**:2655-2671.
4. Kleinman MT, Araujo JA, Nel A, Sioutas C, Campbell A, Cong PQ, Li H, Bondy SC: **Inhaled ultrafine particulate matter affects CNS inflammatory processes and may act via MAP kinase signaling pathways.** *Toxicology Letters* 2008, **178**:127-130.
5. MohanKumar SMJ, Campbell A, Block M, Veronesi B: **Particulate matter, oxidative stress and neurotoxicity.** *Neurotoxicology* 2008, **29**:479-488.
6. Franco Suglia S, Gryparis A, Wright RO, Schwartz J, Wright RJ: **Association of black carbon with cognition among children in a prospective birth cohort study.** *Am J Epidemiol* 2008, **167**:280-286.
7. Ranft U, Schikowski T, Sugiri D, Krutmann J, Krämer U: **Long-term exposure to traffic related particulate matter impairs cognitive function in the elderly.** *Environ Res* 2009, **109**:1004-1111.
8. Crüts B, van Etten L, Törnqvist H, Blomberg A, Sandström T, Mills NL, Borm PJA: **Exposure to diesel exhaust induces changes in EEG in human volunteers.** *Particle Fibre Toxicol* 2008, **5**:4.
9. Calderón-Garcidueñas L, Azzarelli B, Acuna H, Garcia R, Gambling TM, Osnaya N, Monroy S, Del Tizapantzi MR, Carson JL, Villarreal-Calderón A, Rewcastle B: **Air pollution and brain damage.** *Toxicol Pathol* 2002, **30**:373-389.
10. Calderón-Garcidueñas L, Reed W, Maronpot RR, Henriquez-Roldan C, Delgado-Chavez R, Calderón-Garcidueñas A, Dragustinovis I, Franco-Lira M, Aragon-Flores M, Solt AC, Altenburg M, Torres-Jardon R, Swenberg JA: **Brain inflammation and Alzheimer's-like pathology in individuals exposed to severe air pollution.** *Toxicol Pathol* 2004, **32**:650-658.
11. Calderón-Garcidueñas L, Solt A, Henriquez-Roldán C, Torres-Jardón R, Nuse B, Herritt L, Villarreal-Calderón R, Osnaya N, Stone I, García R, Brooks DM, González-Maciel A, Reynoso-Robles R, Delgado Chávez R, Reed W: **Long-term air pollution exposure is associated with neuroinflammation, an altered innate immune response, disruption of the blood brain barrier, ultrafine particulate deposition, and accumulation of amyloid β -42 and α -synuclein in children and young adults.** *Toxicol Pathol* 2008, **36**:289-310.
12. Campbell A, Oldham M, Becaria A, Bondy SC, Meacher D, Sioutas C, Misra C, Mendez LB, Kleinman M: **Particulate matter in polluted air increases inflammatory indices in the mouse brain.** *NeuroToxicology* 2005, **26**:133-140.
13. Veronesi B, Makwana O, Pooler M, Chen L: **Effects of subchronic exposure to concentrated air pollution in Apo E^{-/-} mice: VII. Degeneration of dopaminergic neurons.** *Inhal Toxicol* 2005, **17**:235-241.
14. Campbell A, Araujo JA, Li H, Sioutas C, Kleinman M: **Particulate matter induced enhancement of inflammatory markers in the brains of Apolipoprotein E knockout mice.** *J Nanosci Nanotechnol* 2009, **9**:5099-5104.
15. Gerlofs-Nijland ME, Campbell A, Miller MR, Newby DE, Cassee FR: **Toxicity of inhaled traffic related particulate matter.** *J Physics: Conference Series* 2009:012049.
16. Lahiri D, Ge Y: **Electrophoretic mobility shift assay for the detection of specific DNA-protein complex in nuclear extracts from the cultured cells and frozen autopsy human brain tissue.** *Brain Res Prot* 2000, **5**:257-265.
17. Livak KJ, Schmittgen TD: **Analysis of relative gene expression data using real-time quantitative PCR and the 2⁻(Delta Delta C(T)).** *Method Methods* 2001, **25**:402-408.
18. Brunekreef B, Holgate ST: **Air pollution and health.** *Lancet* 2002, **360**:1233-42.
19. Mills NL, Donaldson K, Hadoke PW, Boon NA, MacNee W, Cassee FR, Sandström T, Blomberg A, Newby DE: **Adverse cardiovascular effects of air pollution.** *Nat Clin Pract Cardiovasc Med* 2009, **6**:36-44.

20. Taoufik E, Petit E, Divoux D, Tseveleki V, Mengozzi M, Roberts ML, Valable S, Ghezzi P, Quackenbush J, Brines M, Cerami A, Probert L: **TNF receptor I sensitizes neurons to erythropoietin- and VEGF-mediated neuroprotection after ischemic and excitotoxic injury.** *Proc Natl Acad Sci USA* 2008, **105**:6185-6190.
21. Tran TA, McCoy MK, Sporn MB, Tansey MG: **The synthetic triterpenoid CDDO-methyl ester modulates microglial activities, inhibits TNF production, and provides dopaminergic neuroprotection.** *J Neuroinflammation* 2008, **5**:14.
22. Lai AY, Todd KG: **Differential regulation of trophic and proinflammatory microglial effectors is dependent on severity of neuronal injury.** *Glia* 2008, **56**:259-270.
23. Sriram K, Matheson JM, Benkovic SA, Miller DB, Luster MI, O'Callaghan JP: **Deficiency of TNF receptors suppresses microglial activation and alters the susceptibility of brain regions to MPTP-induced neurotoxicity: role of TNF-alpha.** *FASEB J* 2006, **20**:670-82.
24. Sriram K, Matheson JM, Benkovic SA, Miller DB, Luster MI, O'Callaghan JP: **Mice deficient in TNF receptors are protected against dopaminergic neurotoxicity: implications for Parkinson's disease.** *FASEB J* 2002, **16**:1474-1476.
25. Mogi M, Harada M, Riederer P, Narabayashi H, Fujita K, Nagatsu T: **Tumor necrosis factor-alpha (TNF-alpha) increases both in the brain and in the cerebrospinal fluid from parkinsonian patients.** *Neurosci Lett* 1994, **165**:208-210.
26. Nishimura M, Mizuta I, Mizuta E, Yamasaki S, Ohta M, Kaji R, Kuno S: **Tumor necrosis factor gene polymorphisms in patients with sporadic Parkinson's disease.** *Neurosci Lett* 2001, **311**:1-4.
27. Wahner AD, Sinsheimer JS, Bronstein JM, Ritz B: **Inflammatory cytokine gene polymorphisms and increased risk of Parkinson's disease.** *Arch Neurol* 2007, **64**:836-840.
28. Wu YR, Feng IH, Lyu RK, Chang KH, Lin YY, Chan H, Hu FJ, Lee-Chen GJ, Chen CM: **Tumor necrosis factor-alpha promoter polymorphism is associated with the risk of Parkinson's disease.** *Am J Med Genet B Neuropsychiatr Genet* 2007, **144B**:300-304.
29. Kuhn HG, Cooper-Kuhn C, Eriksson P, Nilsson M: **Signals regulating neurogenesis in the adult olfactory bulb.** *Chem Senses* 2005:i109-110.
30. Kurushima H, Ohno M, Miura T, Nakamura TY, Horie H, Kadoya T, Ooboshi H, Kitazono T, Ibayashi S, Lida M, Nakabeppu Y: **Selective induction of deltaFosB in the brain after transient forebrain ischemia accompanied by an increased expression of galactin-1, and the implication of DeltaFosB and galactin-1 in neuroprotection and neurogenesis.** *Cell Death Differ* 2005, **12**:1978-1096.
31. Sarnico I, Lanzillotta A, Benarese M, Alghisi M, Baiguera C, Battistin L, Spano P, Pizzi M: **NF-kappaB dimers in the regulation of neuronal survival.** *Int Rev Neurobiol* 2009, **85**:351-36.
32. Dick CA, Singh P, Daniels M, Evansky P, Becker S, Gilmour MI: **Murine pulmonary inflammatory responses following instillation of size-fractionated ambient particulate matter.** *J Toxicol Environ Health* 2003, **66**:2193-2207.
33. Schaumann F, Borm PJ, Herbrich A, Knoch J, Pitz M, Schins RP, Luettig B, Hohlfeld JM, Heinrich J, Krug N: **Metal-rich ambient particles (particulate matter 2.5) cause airway inflammation in healthy subjects.** *Am J Respir Crit Care Med* 2004, **170**:898-903.
34. Inoue KI, Takano H, Sakurai M, Oda T, Tamura H, Yanagisawa R, Shimada A, Yoshikawa T: **Pulmonary exposure to diesel exhaust particles enhances coagulatory disturbances with endothelial damage and systemic inflammation related to lung inflammation.** *Exp Biol Med* 2006, **231**:1626-1632.
35. Brennenman KA, Wong BA, Bucellato MA, Costa ER, Gross EA, Dorman DC: **Direct olfactory transport of inhaled manganese to the rat brain: Toxicokinetic investigations in a unilateral nasal occlusion model.** *Tox Applied Pharm* 2000, **169**:238-248.
36. Elder A, Gelein R, Silva V, Feikert T, Opanashuk L, Carter J, Potter R, Maynard A, Ito Y, Finkelstein J, Oberdorster G: **Translocation of inhaled ultrafine manganese oxide particles to the central nervous system.** *Environ Health Perspect* 2006, **114**:1172-1178.
37. Mills NL, Amin N, Robinson SD, Anand A, Davies J, Patel D, de la Fuente JM, Cassee FR, Boon NA, Macnee W, Miller AM, Donaldson K, Newby DE: **Do inhaled carbon nanoparticles translocate directly into the circulation in humans.** *Am J Respir Crit Care Med* 2006, **173**:426-431.
38. Takenaka S, Karg E, Roth C, Schulz H, Ziesenis A, Heinzmann U, Schramel P, Heyder J: **Pulmonary and systemic distribution of inhaled ultrafine silver particles in rats.** *Environ Health Perspectives* 2001, **109**:547-551.
39. Bauer B, Hartz AM, Miller DS: **Tumor necrosis factor alpha and endothelin-1 increase P-glycoprotein expression and transport activity at the blood-brain barrier.** *Mol Pharmacol* 2007, **71**:667-675.
40. Hartz AMS, Bauer B, Block ML, Hong JS, Miller DS: **Diesel exhaust particles induce oxidative stress, proinflammatory signaling, and P-glycoprotein up-regulation at the blood brain barrier.** *FASEB J* 2008, **22**:2723-2733.
41. Meeuwssen S, Bsibsi M, Persoon-Deen C, Ravid R, van Noort JM: **Cultured human adult microglia from different donors display stable cytokine, chemokine, and growth factor gene profiles but respond differently to a pro-inflammatory stimulus.** *Neuroimmunomodulation* 2005, **12**:235-245.

doi: 10.1186/1743-8977-7-12

Cite this article as: Gerlofs-Nijland *et al.*, Effect of prolonged exposure to diesel engine exhaust on proinflammatory markers in different regions of the rat brain *Particle and Fibre Toxicology* 2010, **7**:12

Submit your next manuscript to BioMed Central and take full advantage of:

- Convenient online submission
- Thorough peer review
- No space constraints or color figure charges
- Immediate publication on acceptance
- Inclusion in PubMed, CAS, Scopus and Google Scholar
- Research which is freely available for redistribution

Submit your manuscript at
www.biomedcentral.com/submit

