



Cite this: *RSC Adv.*, 2019, 9, 18598

## Low density lipoprotein adsorption on a titanium surface and its effect on osteoblast behaviors

Li-na Xu,<sup>ab</sup> Shui-yi Shao,<sup>ab</sup> Wen-qing Zhu,<sup>ab</sup> Chao Chen,<sup>c</sup> Song-mei Zhang<sup>d</sup> and Jing Qiu<sup>ib\*ab</sup>

**Objective:** This study aims to investigate the adsorption of low density lipoprotein (LDL) on a titanium surface and to explore its effect on osteoblast behaviors. **Materials and methods:** LDL adsorption on a titanium surface was analyzed using LDL assay and X-ray photoelectron spectroscopy (XPS). Physical properties, including topography, surface roughness and wettability of a control smooth titanium surface and a LDL pre-adsorbed titanium surface, were assessed. Subsequently, the adhesion, proliferation and differentiation abilities of MC3T3-E1 cells (an osteoblast-like cell line) on the surfaces of control titanium and LDL pre-adsorbed titanium were investigated. **Results:** LDL assay and XPS confirmed LDL adsorption on the titanium surface. The maximum adsorption of LDL on the titanium surfaces was observed after 150 minutes of incubation. In comparison with the control smooth titanium surface, the roughness and hydrophilicity of the LDL pre-adsorbed titanium surface were significantly altered. Furthermore, *in vitro* studies demonstrated that LDL adsorption obviously attenuated the adhesion, proliferation and differentiation of MC3T3-E1 cells on the titanium surface. **Conclusion:** LDL could adsorb on a titanium surface. Meanwhile, LDL adsorption changed the characteristics of the titanium surface, which, in turn, negatively regulated osteoblast behaviors.

Received 28th April 2019  
Accepted 4th June 2019

DOI: 10.1039/c9ra03173a

rsc.li/rsc-advances

### 1. Introduction

Titanium and its alloys are extensively applied in dental implants owing to their advantages of excellent biocompatibility, great tensile strength, and recognizable corrosion resistance.<sup>1</sup> The surface properties of titanium indicate the existence of amorphous TiO<sub>2</sub>, which is known as a stable oxide layer with a thickness between 3 and 7 nm.<sup>2</sup> Blood (plasma) infiltration occurs during the first process of contact with an implant surface once a dental implantation is finished.<sup>3</sup> It is well known that, immediately after plasma contact, rapid adsorption of plasma proteins onto the biomedical material takes place.<sup>4</sup> In bone-to-implant binding, adsorption of blood-derived proteins onto the implant surface can influence subsequent cell attachment, spreading, proliferation, differentiation and regulation of material–cell interactions.<sup>5,6</sup> Thus, the exploration of protein adsorption on a titanium surface is necessary to elucidate the factors influencing dental implant success.

Protein adsorption, such as human serum protein on TiO<sub>2</sub>, is of great importance due to their presence in plasma and

potential functions in wound healing and inflammatory response.<sup>7</sup> Previous reports have investigated several blood-derived proteins existed in plasma, such as fibronectin, serum albumin and collagen. The potential effects of their adsorption on titanium surface and osteoblasts *in vitro* have been identified.<sup>8–10</sup> These proteins can concentrate on the interface between implant surfaces and the surrounding matrix. In addition, the adsorption of fibronectin is considered to be affected by the wettability of implant surface, with greater binding observed on hydrophobic surfaces.<sup>11,12</sup>

Low density lipoprotein (LDL), one of plasma lipoproteins, is considered as a macro-molecular assembly of proteins and lipids in blood.<sup>13</sup> It consists of triglycerides, cholesteryl esters and apolipoprotein B-100 (apoB-100). ApoB-100 is one of the largest monomeric proteins with 4536 residues.<sup>14</sup> In hyperlipidemia, plasma concentration of LDL tends to be excessive. Hyperlipidemia induced by high-fat (HF) diet is characterized by elevated lipids in the bloodstream.<sup>15</sup> Some studies have indicated that hyperlipidemia can significantly interfere with the process of implant osseointegration, decreasing bone formation and strength of bone-to-implant interface, as well as increasing implant loss. This may eventually lead to adverse consequences in dental implant therapy.<sup>16,17</sup> However, recent *in vivo* studies also pointed out that high LDL is a neglected biologic risk factor in dental implant osseointegration.<sup>18,19</sup> Since the effect of high LDL on bone development or implant remains controversial, more studies have been performed to illustrate

<sup>a</sup>Department of Oral Implantology, Affiliated Hospital of Stomatology, Nanjing Medical University, Nanjing, PR China

<sup>b</sup>Jiangsu Key Laboratory of Oral Disease, Nanjing Medical University, Nanjing, 210029, PR China. E-mail: qiuqing@njmu.edu.cn; Tel: +86 25 85031834

<sup>c</sup>Department of Oral Implantology, Huaxia Hospital of Stomatology, Suzhou, PR China

<sup>d</sup>Department of General Dentistry, Eastman Institute for Oral Health, University of Rochester, Rochester, NY, USA



the relationship between high level of LDL and osteoblast behaviors.<sup>20–22</sup> At the cellular level, osteoblasts are able to bind, internalize and degrade LDL by SR-B receptors. Meanwhile, they can oxidize LDL into oxidized-LDL (ox-LDL), which has been proved to inhibit osteoblast differentiation and result in adverse effects on bone formation.<sup>23</sup> Furthermore, it has been found that ox-LDL is negatively associated with bone mineral density, leading to osteoporosis in post-menopausal women.<sup>24</sup> Consequently, the potential role of LDL in the interaction between the implant surface and surrounding matrix should be clarified, especially in hyperlipidemia patient.

Cellular responses are mediated through proteins and protein ligands. It is generally believed that the initial event in the interaction between material surfaces and blood is protein adsorption onto the surface.<sup>25</sup> The relationship between the adsorption of specific proteins and the surface reactivity of materials has not so far been fully explicated. As a risk factor of hyperlipidemia, LDL was speculated to induce adverse effects during the process of dental implant osseointegration. However, to the best of our knowledge, scientific evaluations on the surface characteristics of titanium surface after LDL adsorption have not been reported. Therefore, in the present study, we hypothesized that early osteoblast behaviors could be affected by LDL pre-adsorbed titanium surface. The existence of LDL adsorption on titanium surface *in vitro* was explored and the osteoblast behaviors on pre-adsorbed titanium surface were investigated. Such information would promote the understanding of potential influence of hyperlipidemia on dental implant treatment.

## 2. Materials and methods

### 2.1. Specimen preparation

Commercially pure titanium (99.5 wt% purity, Shanghai, China) was applied in this study. All specimens were polished using waterproof silicon carbide paper from #400, #600, #800, #1000, #1200 to #1500, followed by ultra-sonically cleaning with ethanol and distilled water. Subsequently, samples were dried in an oven at 65 °C for 24 h. All samples were disinfected by disinfecting pan and dried for 24 h.

### 2.2. Evaluation of LDL adsorption capacity

Adsorption percentage was calculated in accordance with the following equation:

$$AP = \frac{[C]_B - [C]_A}{[C]_B} \times 100\%.$$

In this equation, adsorption percentage was represented by AP.  $[C]_B$  was the concentration before adsorption.  $[C]_A$  was the concentration after adsorption. LDL was purchased from Yi-Yuan Limited Liability Company (Guangzhou, China). Protein purity was identified using agarose gel electrophoresis according to manufacturer's instructions. LDL was diluted to 100  $\mu\text{g ml}^{-1}$  by phosphate-buffered saline (PBS), and then transferred onto the surface of titanium specimens in a 96-well plate. Subsequently, they were incubated in a 5%  $\text{CO}_2$  humidified

environment at 37 °C for 180 min. The concentration of LDL was determined in strict accordance with a LDL assay kit (Jian-Cheng Bioengineering Institute, Nanjing, PRC). Measurements were conducted for three times for each time point.

### 2.3. Analysis of surface characterization

According to the concentration of LDL (0, 50, 100 and 200  $\mu\text{g ml}^{-1}$ ), titanium specimens were divided into four groups. Titanium specimens of different groups were immersed in 0, 50, 100 and 200  $\mu\text{g ml}^{-1}$  LDL solutions respectively, and then incubated in a 5%  $\text{CO}_2$  humidified atmosphere at 37 °C for an optimal time, which was determined by above adsorption test. After that, samples were washed with deionized water and dried in a vacuum oven at room temperature. The surface chemical composition of each sample was analyzed by X-ray photoelectron spectroscopy (XPS, Thermo Scientific Escalab 250Xi, USA) utilizing a monochromatic Al  $K\alpha$  electrode at 15 kV and 150 W with a 45° take-off angle. Survey and high-resolution spectra were obtained using pass energies of 160 and 40 eV, respectively. Reference binding energy of each element was obtained from the National Institute of Standards and Technology XPS Online Database (<http://srdata.nist.gov/xps/>). Spectra were calibrated by adjusting the binding energy of C 1s to 284.8 eV.

The surface roughness of each sample was measured using an optical profilometer (MicroXam<sup>TM</sup>, Phase-Shift, UP, Rtec co, USA). The scanning area on each sample was 50  $\mu\text{m} \times 50 \mu\text{m}$ . The surface wettability of each sample was evaluated from contact angle by measuring the droplet of pure water on the substrate using Automatic Contact Angle Meter Model SL200B (Kenuo, USA) in an ambient environment. All measurements were performed in triplicate.

### 2.4. Cell culture

MC3T3-E1 cells, an osteoblast-like cell line, were chosen in this study. The cells were purchased from Chinese Academy of Sciences Cell Bank (Shanghai, China). The cells were cultured in  $\alpha$ -Minimum Essential Medium ( $\alpha$ -MEM, Gibco, Carlsbad, CA, USA) supplemented with 10% fetal bovine serum (FBS) and 1% penicillin/streptomycin, and maintained in a humidified atmosphere of 5%  $\text{CO}_2$  and 95% air at 37 °C. The medium was changed every two days. Cells were passaged on reaching 80% confluence for subsequent use.

### 2.5. Cell adhesion assay

To observe the morphology of cells growing on titanium specimens, MC3T3-E1 cells ( $5 \times 10^3$  cells per well) were seeded on different samples pre-adsorbed with 0, 50, 100 and 200  $\mu\text{g ml}^{-1}$  LDL in 96-well plates. After culturing for 4 h, each sample was rinsed with PBS and fixed with 4% paraformaldehyde in PBS for 10 minutes at room temperature. Subsequently, each sample was stained with rhodamine phalloidin (Cytoskeleton, USA) at room temperature in the dark for 30 minutes. Afterwards, each sample was stained with 4',6'-diamidino-2-phenylindole (DAPI) (Beyotime, Shanghai, China) in the dark for 30 seconds. The morphology of adherent MC3T3-E1 cells in five random fields

on each sample were observed under a laser scanning confocal microscope (LSM710, Zeiss, Germany) at 400 $\times$  magnification.

## 2.6. Cell proliferation assay

Cell proliferation assay was performed to assess cell viability on different titanium specimens pre-adsorbed with 0, 50, 100 and 200  $\mu\text{g ml}^{-1}$  LDL using CCK-8 assay. MC3T3-E1 cells ( $2 \times 10^3$  cells per well) were seeded on samples in 96-well plates. After culturing for 1, 2 and 3 days, 100  $\mu\text{L}$  of culture medium containing 10  $\mu\text{L}$  of CCK-8 solution (Beyotime, Shanghai, China) was added to each well and then incubated for 2 h. The absorbance at 450 nm was measured by a microplate reader (Spectramax190, MD, USA). Each experiment was performed in triplicate.

## 2.7. Alkaline phosphatase (ALP) activity assay

MC3T3-E1 cells ( $2 \times 10^5$  cells per well) were seeded on different samples pre-adsorbed with 0, 50, 100 and 200  $\mu\text{g ml}^{-1}$  LDL in 6-well plates for ALP activity assay. After 7 and 14 days of incubation, samples were washed with PBS and the cells on samples were lysed with radio-immunoprecipitation assay buffer (Beyotime, Shanghai, China) at 4  $^{\circ}\text{C}$  for 30 minutes. Subsequently, the lysates were centrifuged at 12 000 rpm at 4  $^{\circ}\text{C}$  for 10 minutes to remove cellular debris and the liquid supernatants were then collected. ALP activity was obtained using an ALP Assay Kit (Jian-Cheng Bioengineering Institute, China). Total protein content was determined by a BCA protein assay kit (KeyGEN BioTECH, Nanjing, China). After protein content normalization, ALP activity relative to control was calculated. Each experiment was performed in triplicate.

## 2.8. Real-time quantitative PCR

Expression levels of runt-related transcription factor 2 (Runx2) and osteocalcin (OCN) genes of cells on different samples pre-adsorbed with 0, 50, 100 and 200  $\mu\text{g ml}^{-1}$  LDL were measured using real-time quantitative PCR. MC3T3-E1 cells at a density of  $2 \times 10^5$  cells per well were seeded on samples in 6-well plates. After culturing for 7 and 14 days, total RNA in MC3T3-E1 cells was isolated using TRIzol reagent (Invitrogen, Carlsbad, CA, USA). Complementary DNA (cDNA) was synthesized according to the instruction of PrimeScript RT Master mix (Takara, Kusatsu, Japan). For real-time PCR assay, each cDNA was amplified using SYBR Premix Ex Taq (Takara, Kusatsu, Japan) via an ABI real-time PCR 7300 system (Applied Biosystems, Foster City, CA, USA). All primer sequences used for target genes were shown in Table 1. Expression levels of all target genes were normalized to that of  $\beta$ -actin. Real-time PCR was performed in triplicate for each group.

## 2.9. Western blotting

Protein expressions of Runx2 and OCN of cells on titanium surfaces were examined by Western blotting. After culturing in 6-well plates on different samples pre-adsorbed with 0, 50, 100 and 200  $\mu\text{g ml}^{-1}$  LDL for 3, 7 and 14 days, MC3T3-E1 cells ( $2 \times 10^5$  cells per well) were rinsed with cold PBS and protein

**Table 1** Primer sequences of target genes for real-time PCR used in this study

Gene	Primer sequence (F: forward; R: reverse)	Product size (bp)
Runx2	F: CCGAAATGCCTCCGCTGTTATG R: TCTGTCTGTGCCTTCTTGGTTCC	194
OCN	F: CACCTAGCAGACACCATGAGGAC R: GACTGAGGCTCCAAGGTAGCG	180
$\beta$ -actin	F: GTGCTATGTTGCTCTAGACTTCG R: ATGCCACAGGATTCCATACC	174

samples were harvested by lysis in radio-immunoprecipitation (RIPA) buffer. The concentration of extracted total proteins was determined using the BCA protein assay kit (Key-GEN BioTECH, Nanjing, China). Protein samples (20  $\mu\text{g}$ ) were separated by electrophoresis and then transferred onto polyvinylidene fluoride (PVDF) membranes (Millipore, Billerica, MA, USA). After blocking with 5% non-fat milk for 1 h at room temperature, the membranes were incubated with primary antibodies against Runx2 (12556; CST, Beverly, MA, USA), OCN (ab93876; Abcam, Cambridge, MA, USA), and  $\beta$ -actin (BM0627, Boster, Wuhan, China) at 4  $^{\circ}\text{C}$  overnight. On the next day, the membranes were incubated with corresponding secondary antibodies (ZB-2301, Goat anti-Rabbit IgG, ZSGB-BIO, Beijing, China; AP124P, Goat anti-Mouse IgG, Millipore, USA) at room temperature for 2 h. After that, the membranes were visualized using the ECL Western Blot Kit (Millipore, USA). The protein expressions were determined relative to that of  $\beta$ -actin. The gray values of protein levels were quantified using the Photoshop software.

## 2.10. Statistical analysis

Experimental results were expressed as means  $\pm$  standard error. SPSS 22.0 software (IBM, Armonk, NY, USA) was used for the statistical analysis. Data were analyzed by one way analysis of variance (ANOVA) with Student–Newman–Keuls method for multiple comparisons. The homogeneity of variance was tested before performing ANOVA.  $P < 0.05$  was considered statistically significant.

# 3. Results and discussion

## 3.1. Effect of time on LDL adsorption percentage

Fig. 1 illustrated the percentage of LDL adsorption on titanium surface at different adsorption intervals during 180 min incubation. The adsorption percentage increased with the prolongation of adsorption time. At 2.5 h (150 min), it reached an optimal condition and the adsorption capacity of LDL was about 41%. For this reason, in the following experiments of this study, 150 min had been selected as the optimal time for LDL pre-adsorption on titanium surface. Similar with other studies, it was reported that the optimal time for LDL adsorption was within the range of 1.5–3 h.<sup>26,27</sup> Several metal materials, including alloys (stainless steel and Ti6Al4V) and pure metals (Ti, Al, Mo, Co, Ni and Ta), adsorbed only very low amounts of

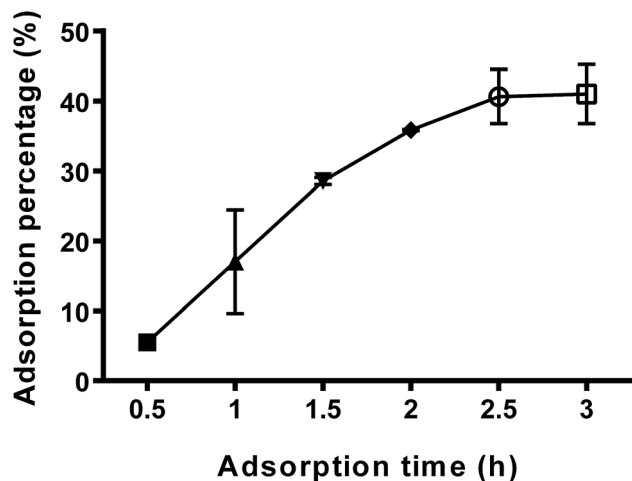


Fig. 1 Effect of adsorption time on adsorption percentage.

protein at the initial stage of exposure to the protein solution, and then the amount adsorbed rising gradually to reach a steady value.<sup>28</sup> LDL is a principal transporter for cholesterol in the blood. LDL adsorption kinetics suggested that LDL adsorption on titanium surface was restricted to the availability of binding sites.<sup>28</sup> The adsorption capacity reached maximum once binding sites were occupied. ApoB-100 is the only protein component of LDL.<sup>29</sup> Thus, it can be reasonably supposed that LDL adsorbed on titanium surface *via* its protein moiety apoB-100.

### 3.2. Characterization of titanium surface

**3.2.1 XPS analysis.** XPS survey spectra acquired for different titanium surfaces pre-adsorbed with 0, 50, 100 and 200  $\mu\text{g ml}^{-1}$  LDL were displayed in Fig. 2. After LDL adsorption, carbon (C), nitrogen (N), oxygen (O) and titanium (Ti) were detected on the titanium surfaces. The peaks of C 1s and N 1s

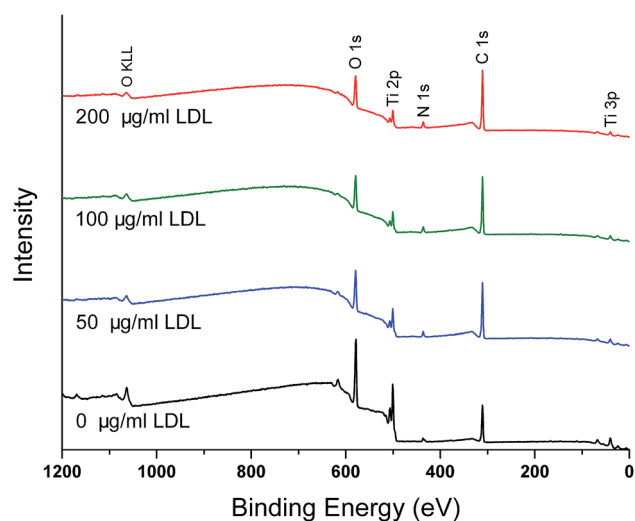


Fig. 2 XPS survey spectra of different titanium surfaces pre-adsorbed with 0, 50, 100 and 200  $\mu\text{g ml}^{-1}$  LDL.

increased significantly, whereas the peaks of Ti 2p and O 1s showed gradually declining trend as the concentration of LDL increasing. XPS high-resolution spectra of Ti 2p, O 1s, N 1s and C 1s on different titanium surfaces were displayed in Fig. 3. The peak of Ti 2p<sub>3/2</sub> was detected at 458.6 eV, indicating the existence of TiO<sub>2</sub> compound (Fig. 3(a)). O 1s peak was found at 530.1 eV, which corresponded to the oxide phase of titanium (Fig. 3(b)). In concurrence with other investigators, the peak separation and peak position indicated the presence of TiO<sub>2</sub>, with an oxidation state of 4+.<sup>4</sup> Furthermore, the binding energy of N 1s was found at 400.0  $\pm$  0.1 eV, which was representative for protein nitrogen (Fig. 3(c)). In this study, C 1s spectra were fitted by two main peaks, which were shown as dotted lines in Fig. 3(d). Peak 1 was set at 284.8 eV for -H-, and peak 2 was at 286.2 eV for -C-N-. For the control group without LDL adsorption, adventitious C and N peaks originated from the laboratory environment.

As shown in XPS survey and high-resolution spectra (Fig. 2 and 3), the results indicated that LDL adsorbed to titanium surface and the titanium oxide was covered after LDL adsorption. Previous studies have reported that titanium oxide played an implant role in the protein adsorption on titanium implants.<sup>2,6</sup> There was a clear trend for enhanced LDL adsorption along with the increase of LDL concentration in this study. N 1s signal is specific to the protein. Generally, C 1s spectra consist of different peaks because of many functional groups existing in protein molecules.<sup>4</sup> Such groups are carbon singly bonded with oxygen or nitrogen, or carbon bonded with one or two (NH<sub>2</sub>-), *etc.* The adsorbed protein amount can be monitored by the experimental area ratio of N 1s and Ti 2p peaks, N 1s/Ti 2p.<sup>30</sup> Higher value of this ratio indicated more adsorbed protein.

**3.2.2 Surface wettability and surface roughness.** Fig. 4 displayed the contact angles of different titanium surfaces with or without LDL adsorption. According to the American Society for Testing and Materials (ASTM) D7334-08 specifications,<sup>31</sup> a surface is hydrophilic when the water contact angle is less than 45° or hydrophobic when the contact angle exceeds 90°. As shown in Fig. 4, the control smooth titanium surface without LDL adsorption showed hydrophobicity, with a contact angle of 67.08°. LDL pre-adsorbed titanium surfaces were significantly more hydrophobic than that of control titanium surface, except for 50  $\mu\text{g ml}^{-1}$  LDL adsorption. The correlation between surface wettability and protein binding was reported as a result of the presence of water molecules.<sup>32</sup> Water molecules first reach the hydrophilic TiO<sub>2</sub> surface and occupy adsorption sites during the process of protein adsorption. After that, protein adsorption occurs. Most abundant lipid species in LDL are triglycerides and cholesteryl esters assumed to reside in the core of the particle. However, different phospholipids are supposed to be located on the titanium surface. Combined with experimental and theoretical data from Murtola, *et al.*,<sup>33</sup> apoB-100 protein is encapsulated around lipid droplets of about 20 nm in size to construct LDL models. Therefore, LDL adsorption on titanium surface *via* its protein moiety apoB-100 might make titanium surface hydrophobic in our work.

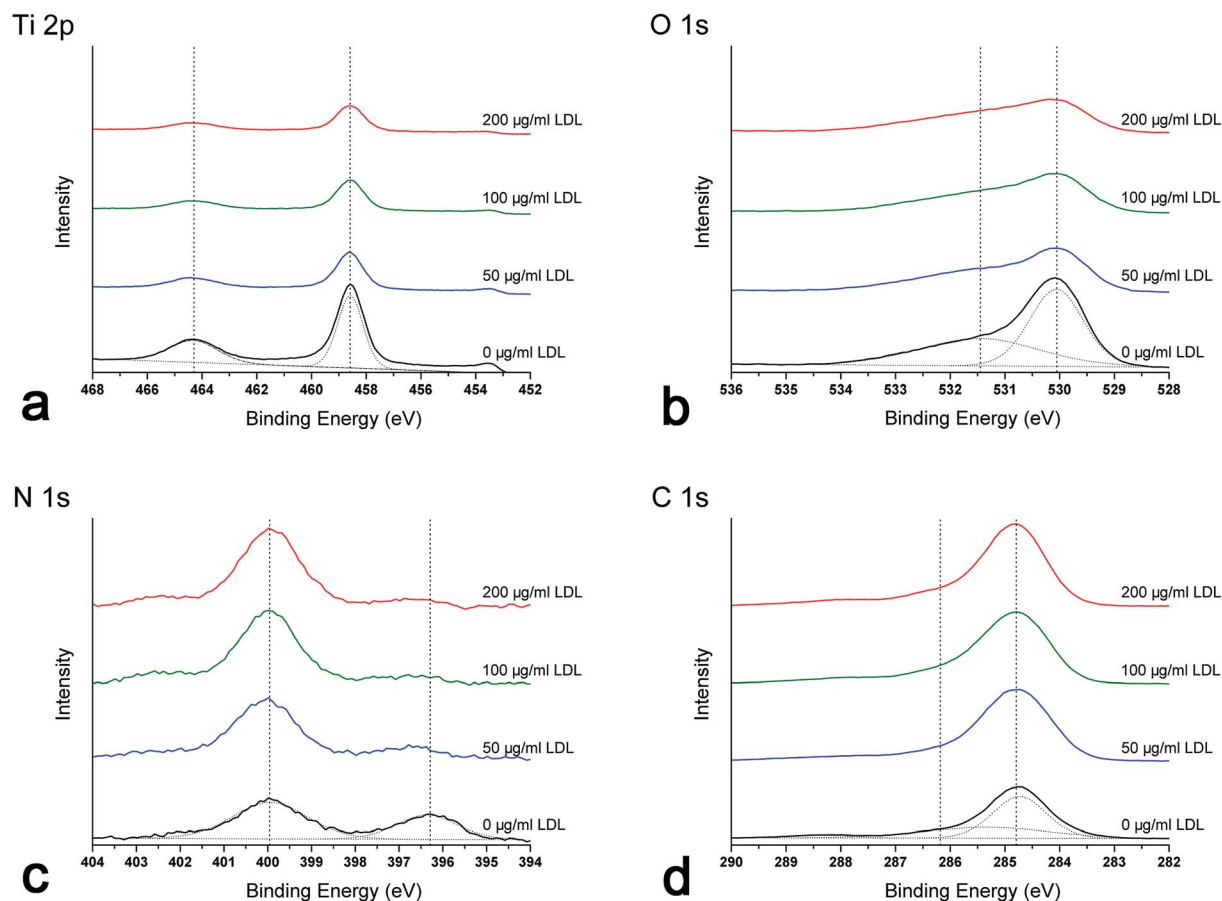


Fig. 3 XPS high-resolution spectra of different titanium surfaces pre-adsorbed with 0, 50, 100 and 200  $\mu\text{g ml}^{-1}$  LDL: (a) Ti 2p; (b) O 1s; (c) N 1s; (d) C 1s.

Fig. 5 presented the three-dimensional surface topography and surface roughness values of different samples with or without LDL adsorption. Three-dimensional images revealed that the control titanium surface was obviously rougher than LDL pre-adsorbed titanium surfaces. Correspondingly, significant changes of roughness values were found between LDL pre-

adsorbed titanium surfaces and control titanium surface. It is well known that surface roughness has a significant impact on cell response.<sup>34</sup> The decline of surface roughness may have impacts on cell response. So we further investigated the cell adhesion, proliferation and differentiation on LDL pre-adsorbed titanium surfaces.

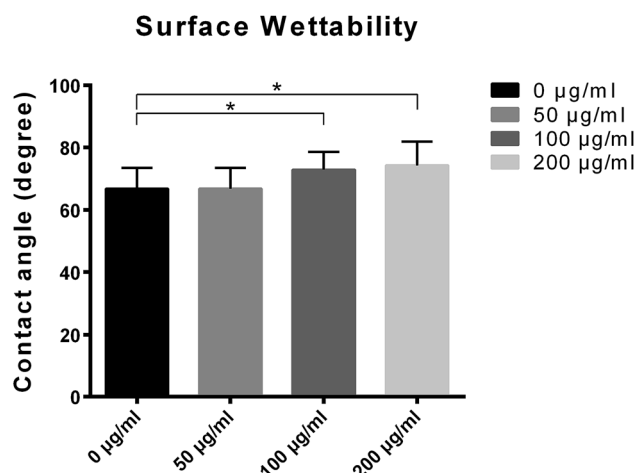


Fig. 4 Contact angles of different titanium surfaces pre-adsorbed with 0, 50, 100 and 200  $\mu\text{g ml}^{-1}$  LDL.

### 3.3. Cell adhesion and spreading

After 4 h cell culture, the morphology of MC3T3-E1 cells varied on different samples with or without LDL adsorption (Fig. 6(a)). As shown in Fig. 6(a), the synapse of MC3T3-E1 cells on LDL pre-adsorbed substrates was obviously shorter than those on the control substrate. It revealed that LDL pre-adsorbed titanium surfaces suppressed the attachment of osteoblasts. Other studies have found that the effects of different proteins on cell attachment were observed to be significantly different.<sup>11,35,36</sup> It was observed that titanium surfaces adsorbed with fibronectin significantly enhanced cell attachment.<sup>35</sup> However, titanium surfaces adsorbed with albumin had no obvious effect on cell attachment.<sup>11</sup> As is well known, protein adsorption on the biomaterial surface is the initial biological response, which can elicit a variety of cell responses.<sup>36</sup> In this work, attenuation of cell spreading on LDL pre-adsorbed titanium surfaces might influence the following cell proliferation.

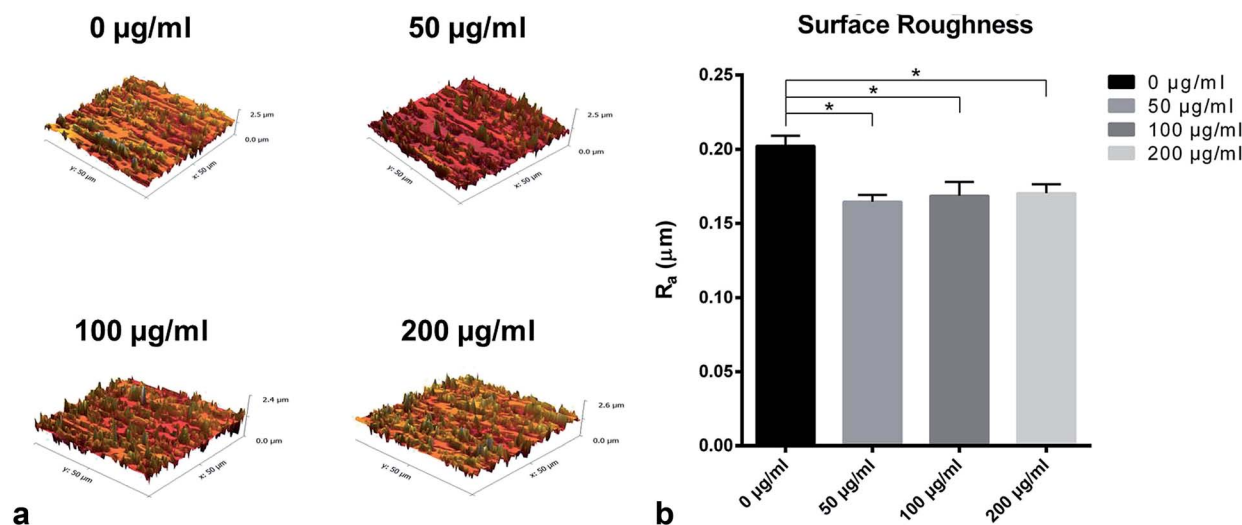


Fig. 5 (a) The three-dimensional surface topography of titanium surfaces pre-adsorbed with 0, 50, 100 and 200  $\mu\text{g ml}^{-1}$  LDL; (b) the surface roughness of different titanium surfaces pre-adsorbed with 0, 50, 100 and 200  $\mu\text{g ml}^{-1}$  LDL.

### 3.4. Cell proliferation

Cell proliferation was measured by CCK-8 assay, and the results were presented in Fig. 6(b). With the prolongation of incubation time, MC3T3-E1 cells proliferated on all samples. After 2 and 3 days of culture, compared with the control titanium surface,

proliferation of MC3T3-E1 cells exhibited significant reductions on LDL pre-adsorbed titanium surfaces. Hamel *et al.*<sup>37</sup> found that native LDL particles may not alter the proliferation of MG-63 cells. But another study of Kumagai *et al.*<sup>38</sup> illustrated that LDL had an important effect on cytotoxic activity of peritoneal macrophages in mice. In the present study, LDL pre-adsorption

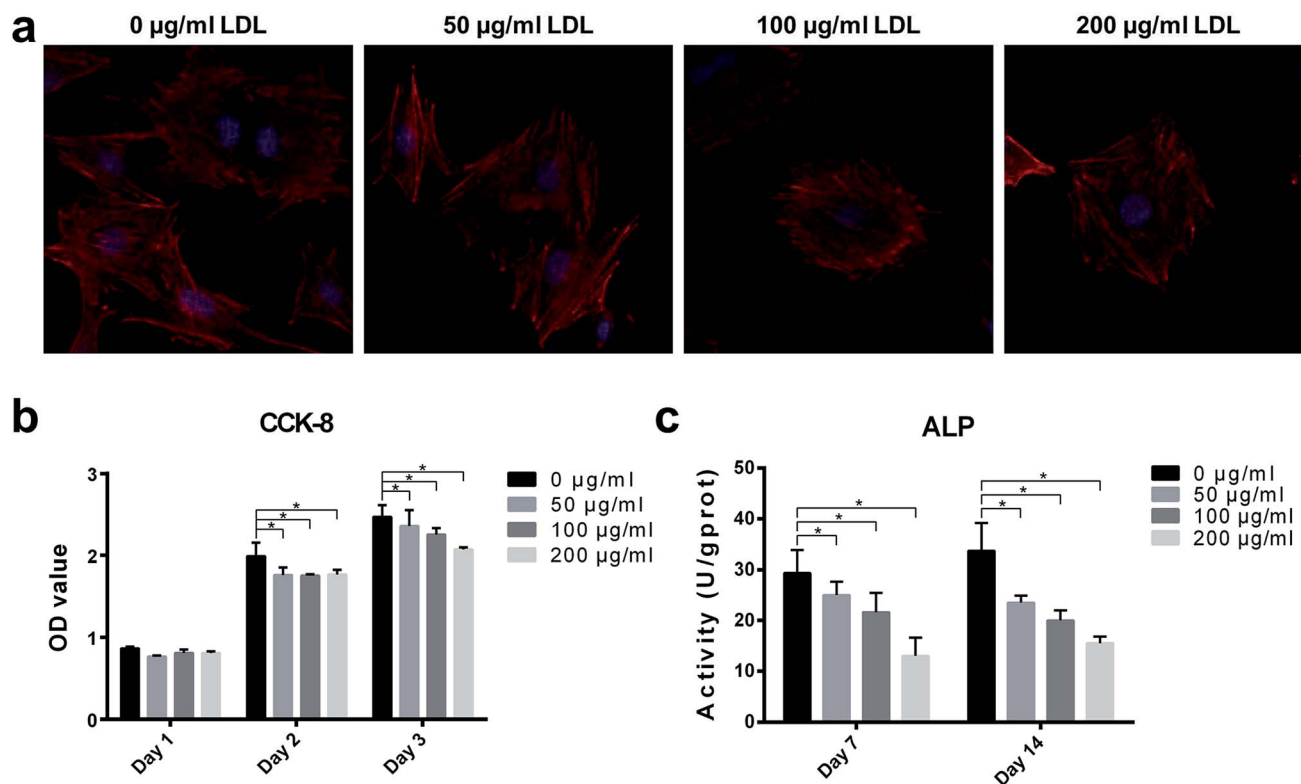


Fig. 6 (a) Fluorescence images of MC3T3-E1 cells spreading on four substrates pre-adsorbed with 0, 50, 100 and 200  $\mu\text{g ml}^{-1}$  LDL after 4 h of incubation (magnification 400 $\times$ ); (b) after culturing for 1, 2 and 3 days, cell proliferations of MC3T3-E1 cells adhered to different titanium surfaces pre-adsorbed with 0, 50, 100 and 200  $\mu\text{g ml}^{-1}$  LDL were analyzed by CCK-8 assay; (c) the alkaline phosphatase (ALP) activity of MC3T3-E1 cells on different titanium surfaces pre-adsorbed with 0, 50, 100 and 200  $\mu\text{g ml}^{-1}$  LDL after culturing for 7 and 14 days. \* indicated significant differences between different groups ( $P < 0.05$ ).

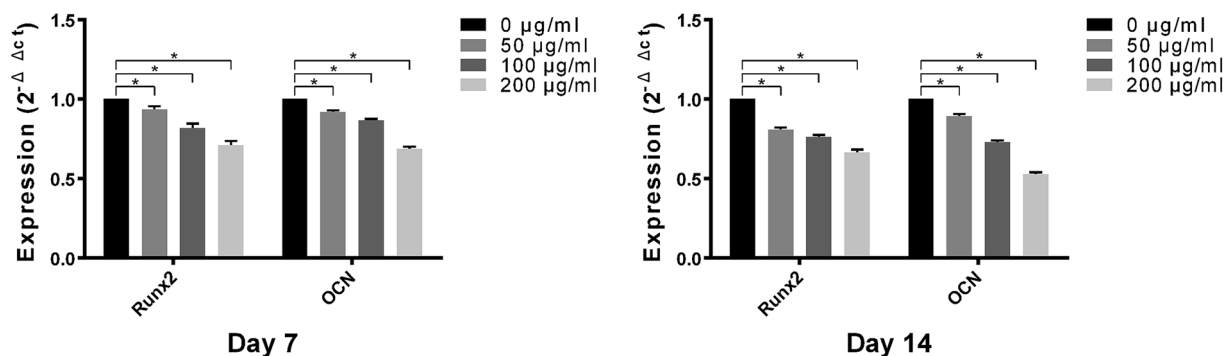


Fig. 7 The mRNA levels of Runx2 and OCN in MC3T3-E1 cells on different titanium surfaces pre-adsorbed with 0, 50, 100 and 200  $\mu\text{g ml}^{-1}$  LDL were detected by real-time quantitative PCR analysis after 7 and 14 days of incubation. \* indicated significant differences between different groups ( $P < 0.05$ ).

titanium surface greatly influenced proliferation of MC3T3-E1 cells. Interaction between LDL and titanium may be the cause of changes in cell proliferation. It has been reported that titanium exhibited oxidant activity, which could increase the oxidation of LDL.<sup>39</sup> Ox-LDL, as the oxidation product of LDL, is known to be able to decrease the proliferation abilities of BMSC, MG-63, MC3T3-E1 cells.<sup>40</sup> Learning from the results, it was found that LDL pre-adsorbed titanium surface played a negative role on the proliferation of osteoblasts. Furthermore, cell spreading, at the first phase of cell/biomaterial interaction, acts a key role in regulating cell proliferation.<sup>41</sup>

### 3.5. ALP activity

The consequences of ALP activity were shown in Fig. 6(c). After culturing for 7 days, ALP activities of MC3T3-E1 cells on LDL pre-adsorbed titanium surfaces significantly decreased compared with that of MC3T3-E1 cells on control titanium surface. After culturing for 14 days, MC3T3-E1 cells on LDL pre-adsorbed titanium surfaces exhibited more significant reductions of ALP activities compared to the control group. ALP, which is expressed in the early stage of osteogenic differentiation, is an osteogenic marker of osteoblast differentiation. The results indicated that osteoblastic functions of MC3T3-E1 cells were significantly altered after LDL adsorption on titanium surface. Protein adsorption is another critical determinant of cell responses to biomaterials. Various cell behaviors are related to the properties of adsorbed proteins on substrates. Previous

studies have shown that the interaction of osteoblast cells with extra cellular matrix (ECM) proteins, collagen-1 (coll-1), fibronectin (FN) may influence matrix mineralization, expressions of osteogenic genes and ALP activity of osteoblasts *in vitro*.<sup>11,36,42</sup> For example, FN played an important role in initial cell attachment and spreading on biomaterials since it was able to specially bind to integrin on cell membranes.<sup>43</sup> However, having insight into the role of adsorbed proteins on dental implant surfaces is still a challenge.

### 3.6. Real-time quantitative PCR analysis

Osteogenic-related genes, including Runx2 and OCN, were determined by the quantitative real-time PCR technique. As shown in Fig. 7, the genes expression levels of Runx2 and OCN in MC3T3-E1 cells on control titanium surface were significantly higher than those on LDL pre-adsorbed titanium surface after culturing for 7 and 14 days. With the increase of LDL concentration, the gene expression levels exhibited gradual declining trend. It demonstrated that LDL played a negative role on expressions of bone formation-related genes after its adsorption on titanium surface.

### 3.7. Western blotting analysis

Western blotting analysis was performed to verify the expression levels of osteogenic-related proteins on titanium surfaces with or without LDL adsorption. As shown in Fig. 8, MC3T3-E1 cells on LDL pre-adsorbed titanium surfaces expressed lower

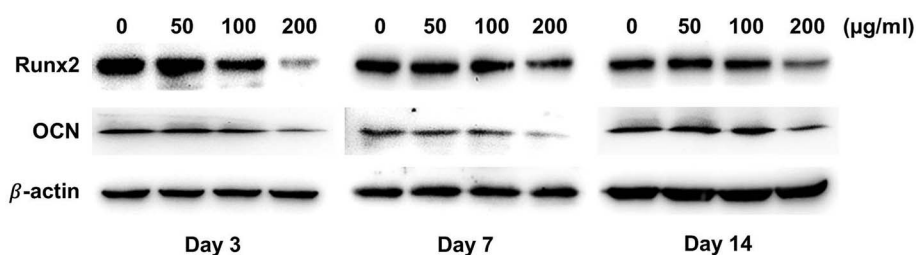


Fig. 8 Protein levels of Runx2 and OCN in MC3T3-E1 cells on different titanium surfaces pre-adsorbed with 0, 50, 100 and 200  $\mu\text{g ml}^{-1}$  LDL were detected by Western blotting after 3, 7 and 14 days of incubation.

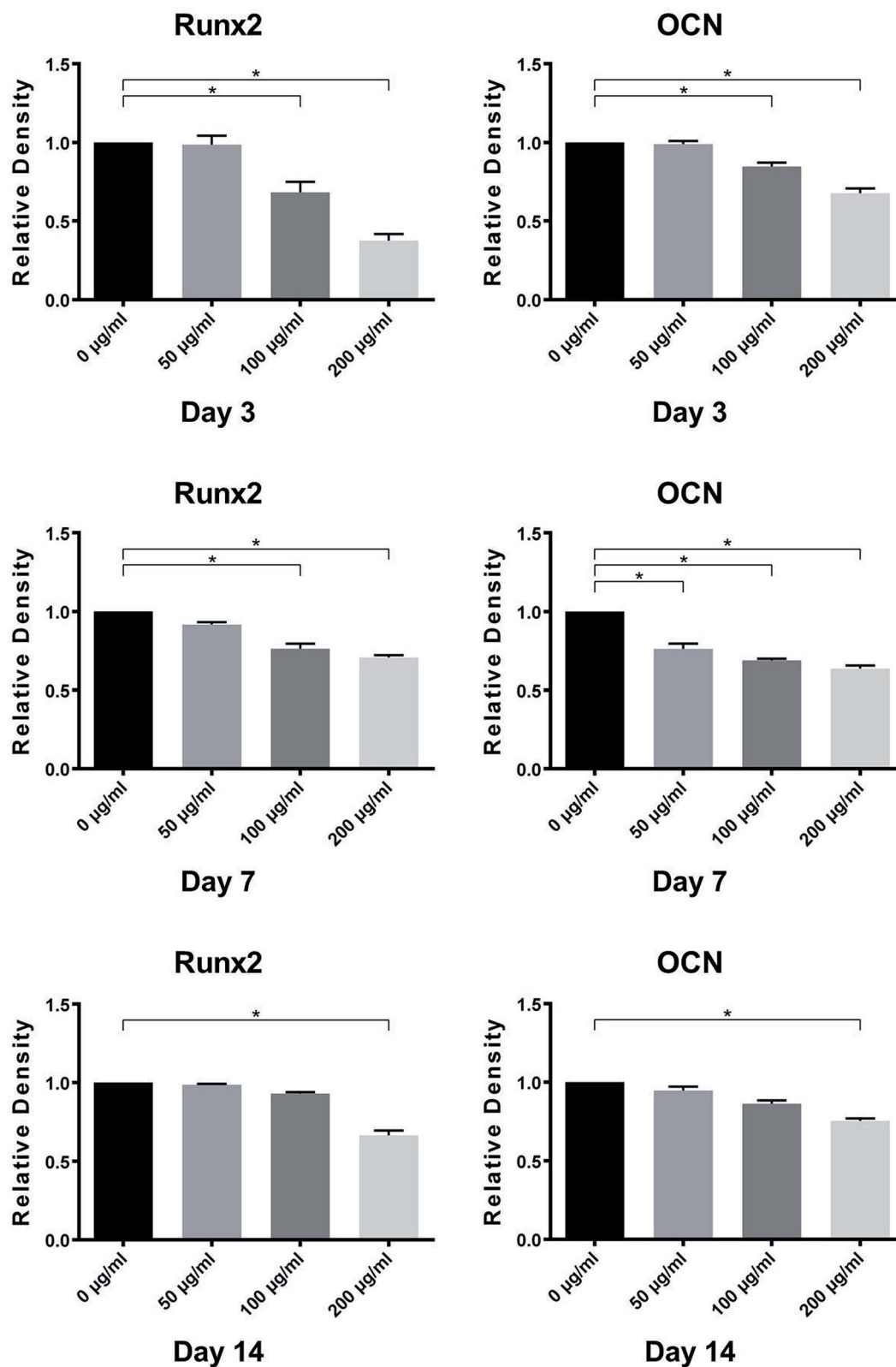


Fig. 9 Quantification of protein levels of Runx2 and OCN using the Photoshop software. \* indicated significant differences between different groups ( $P < 0.05$ ).

protein levels of Runx2 and OCN than those on control titanium surfaces after culturing for 3, 7 and 14 days. The significant differences in the protein levels between different groups can be

found from 3 days of incubation. Moreover, as the concentration of LDL rising, the protein expression levels of Runx2 and OCN tended to decrease. Fig. 9 displayed the gray values of



protein levels quantified using the Photoshop software. As shown in Fig. 9, significant differences were found between the protein levels of Runx2 and OCN on titanium surfaces pre-adsorbed with 200  $\mu\text{g ml}^{-1}$  LDL and control titanium surface for 3, 7 and 14 days.

Both quantitative PCR and Western blotting analysis demonstrated that LDL pre-adsorbed titanium surface significantly down-regulated the expression levels of Runx2 and OCN in MC3T3-E1 cells in comparison with those on control titanium surface. Runx2 and OCN, as prominent osteogenesis markers, were selected to analyze osteoblastic differentiation activities in our work. Runx2 is expressed in the early stage of osteogenic differentiation. OCN is recognized as a marker of late-stage osteogenic differentiation and directly participates in the mineralization process.<sup>44</sup> From the results of Fig. 7 and 8, it was believed that LDL down-regulated gene and protein expressions of bone formation after its adsorption on titanium surface. Correspondingly, ALP activity of cells cultured on LDL pre-adsorbed titanium surface was remarkably down-regulated. This was in agreement with the adverse effect of LDL adsorption on cell spreading and proliferation abilities. Furthermore, it has been noticed that osteoblasts could bind, internalize and degrade LDL while LDL adsorbed on titanium surface. This might eventually lead to osteoblasts shedding, which was adverse to bone formation.<sup>45</sup>

Talking about the results above, the LDL adsorption on titanium surface was confirmed by LDL assay and XPS analysis, and LDL pre-adsorbed titanium surface exhibited significantly worse *in vitro* bioactivity than that of control titanium surface. Previous studies have reported that hyperlipidemia can significantly compromise implant osseointegration and cause poor outcome in dental implant therapy.<sup>16,17</sup> And that, it was found that hyperlipidemia may negatively affect the implant stability and decrease peri-implant bone regeneration.<sup>46</sup> From our study, it could be speculated that LDL adsorption on titanium surface might be the possible original cause of hyperlipidemia-induced poor implant osseointegration. Given this viewpoint, it is necessary to control serum LDL level of hyperlipidemia patients before dental implant treatment. However, the underlying mechanism of LDL adsorption regulating osteoblast behaviors and bone formation process required further investigations.

## 4. Conclusions

In the present study, we explored LDL adsorption on titanium surface and confirmed that the maximum adsorption of LDL on titanium surfaces occurred after 150 min incubation. LDL adsorption could significantly change the roughness and hydrophilicity of titanium surface. Furthermore, it was found that LDL pre-adsorbed titanium surface exhibited deleterious effects on the spreading, proliferation and differentiation of osteoblasts.

## Author contributions

LNx contributed to design, data acquisition and analysis, and drafted the manuscript. SYS, WQZ contributed to design, data

acquisition and analysis. CC, SMZ contributed to data acquisition. The corresponding author JQ contributed to conception, design, data interpretation, and critically revised the manuscript. All authors give final approval and agree to be accountable for all aspects of the work.

## Conflicts of interest

All authors declare that they have no conflicts of interest with the contents of this article.

## Acknowledgements

This study was supported by the National Natural Science Foundation of China (Project Number: 81472928, 81870799), the Medical Science Foundation of Jiangsu Provincial Health Department (Project Number: H201641), the Jiangsu Provincial Medical Youth Talent (Project Number: QNRC2016850), the Southeast University-Nanjing Medical University Cooperative Research Project (Project Number: 2242017K3DN14), the Nanjing Medical University-SUYAN Group Intelligent Innovation Research and Development Project (Project Number: NMU-SY201806), and the Science and Technology Development Foundation of Nanjing Medical University (Project Number: 2017NJMU101).

## References

- 1 M. Kulkarni, A. Flaker, M. Lokar, K. Mrak-Poljsak, A. Mazare, A. Artenjak, S. Cucnik, S. Kralj, A. Velikonja, P. Schmuki, V. Kralj-Iglic, S. Sodin-Semrl and A. Iglic, *Int. J. Nanomed.*, 2015, **10**, 1359–1373.
- 2 M. Lehnert, M. Gorbahn, C. Rosin, M. Klein, I. Koper, B. Al-Nawas, W. Knoll and M. Veith, *Langmuir*, 2011, **27**, 7743–7751.
- 3 J. Park and J. Davies, *Clin. Oral Implants Res.*, 2000, **11**, 530–539.
- 4 Y. Yang, R. Cavin and J. L. Ong, *J. Biomed. Mater. Res.*, 2003, **67**, 344–349.
- 5 R. Vaz, G. G. Martins, S. Thorsteinsdottir and G. Rodrigues, *Cell Tissue Res.*, 2012, **348**, 569–578.
- 6 J. Pei, H. Hall and N. D. Spencer, *Biomaterials*, 2011, **32**, 8968–8978.
- 7 Y. Yang, R. Cavin and J. L. Ong, *J. Biomed. Mater. Res.*, 2003, **67**, 344–349.
- 8 S. Bauer, J. Park, A. Pittrof, Y. Y. Song, K. von der Mark and P. Schmuki, *Integr. Biol.*, 2011, **3**, 927–936.
- 9 J. Park, S. Bauer, K. A. Schlegel, F. W. Neukam, K. von der Mark and P. Schmuki, *Small*, 2009, **5**, 666–671.
- 10 W. Yang, X. Xi, Q. Ran, P. Liu, Y. Hu and K. Cai, *Mater. Sci. Eng., C*, 2014, **34**, 410–416.
- 11 F. Grinnell and M. K. Feld, *J. Biol. Chem.*, 1982, **257**, 4888–4893.
- 12 G. Altankov and F. Groth, *J. Biomed. Mater. Res.*, 1996, **30**, 385–391.
- 13 J. S. Samra, L. K. Summers and K. N. Frayn, *Br. J. Surg.*, 1996, **83**, 1186–1196.

- 14 R. Prassl and P. Laggner, *Eur. Biophys. J.*, 2009, **38**, 145–158.
- 15 S. Dundar, F. Yaman, M. F. Ozupek, A. Saybak, M. Gul, F. Asutay, M. Kirtay and I. H. Ozercan, *J. Korean Assoc. Oral Maxillofac. Surg.*, 2016, **42**, 187–192.
- 16 F. Pirih, J. Lu, F. Ye, O. Bezougliaia, E. Atti, M. G. Ascenzi, S. Tetradis, L. Demer, T. Aghaloo and Y. Tintut, *J. Bone Miner. Res.*, 2012, **27**, 309–318.
- 17 A. Keuroghlian, A. D. Barroso, G. Kirikian, O. Bezougliaia, Y. Tintut, S. Tetradis, P. Moy, F. Pirih and T. Aghaloo, *J. Oral Implantol.*, 2015, **41**, e7–e11.
- 18 J. Choukroun, G. Khoury, F. Khoury, P. Russe, T. Testori, Y. Komiyama, G. Sammartino, P. Palacci, M. Tunali and E. Choukroun, *J. Oral Implantol.*, 2014, **40**, 110–114.
- 19 M. Muluke, T. Gold, K. Kiefhaber, A. Al-Sahli, R. Celenti, H. Jiang, S. Cremers, T. Van Dyke and U. Schulze-Spate, *J. Dent. Res.*, 2016, **95**, 223–229.
- 20 J. Makovey, J. S. Chen, C. Hayward, F. M. Williams and P. N. Sambrook, *Bone*, 2009, **44**, 208–213.
- 21 J. Ryo, I. Mikael, S. Young-Taeg and C. B. Johansson, *J. Oral Maxillofac. Res.*, 2010, **1**, 3–9.
- 22 E. Luegmayr, H. Glantschnig, G. A. Wesolowski, M. A. Gentile, J. E. Fisher, G. A. Rodan and A. A. Reszka, *Cell Death Differ.*, 2004, **11**(suppl. 1), S108–S118.
- 23 M. R. Brodeur, L. Brissette, L. Falstraull, V. Luangrath and R. Moreau, *J. Bone Miner. Res.*, 2008, **23**, 326–337.
- 24 T. Yamaguchi, T. Sugimoto, S. Yano, M. Yamauchi, H. Sowa, Q. Chen and K. Chihara, *Endocr. J.*, 2002, **49**, 211–217.
- 25 S. Runa, M. Lakadamyali, M. L. Kemp and C. K. Payne, *J. Phys. Chem. B*, 2017, **121**, 8619–8625.
- 26 S. Q. Wang, Y. T. Yu, T. Cui and Y. Cheng, *Biomaterials*, 2003, **24**, 2799–2802.
- 27 S. Zhao, F. Wen, F. He, L. Liu and G. Yang, *Int. J. Oral Maxillofac. Implant.*, 2014, **29**, 211–220.
- 28 R. L. Williams and D. F. Williams, *Biomaterials*, 1988, **9**, 206–212.
- 29 D. D. Deligianni, N. Katsala, S. Ladas, D. Sotiropoulou, J. Amedee and Y. F. Missirlis, *Biomaterials*, 2001, **22**, 1241–1251.
- 30 M. D. Carroll and D. T. Nguyen, *NCHS Data Brief.*, 2017, **290**, 1–8.
- 31 American Society for Testing and Materials (ASTM), *D7334–08, Standard Practice for Surface Wettability of Coatings, Substrates and Pigments by Advancing Contact Angle Measurement*, ASTM International, West Conshohocken, PA, USA, 2013.
- 32 D. Kohavi, L. B. Hauslich, G. Rosen, D. Steinberg and M. N. Sela, *Clin. Oral Implant. Res.*, 2013, **24**, 1002–1008.
- 33 T. Murtola, T. A. Vuorela, M. T. Hyvonen, S. J. Marrink, M. Karttunen and I. Vattulainen, *Soft Matter*, 2011, **7**, 8135–8141.
- 34 E. M. Lee, K. Smith, K. Gall, B. D. Boyan and Z. Schwartz, *Biomaterials*, 2016, **110**, 34–44.
- 35 T. Hayakawa, M. Yoshinari and K. Nemoto, *Biomaterials*, 2004, **25**, 119–127.
- 36 N. R. Gandavarapu, P. D. Mariner, M. P. Schwartz and K. S. Anseth, *Acta Biomater.*, 2013, **9**, 4525–4534.
- 37 P. Hamel, E. Abed, L. Brissette and R. Moreau, *Am. J. Physiol. Cell Physiol.*, 2008, **294**, C1021–C1033.
- 38 T. Kumagai, T. Nagata, Y. Kudo, Y. Fukuchi, K. Ebina and K. Yokota, *Yakugaku Zasshi*, 2001, **121**, 277–281.
- 39 M. Ani, A. A. Moshtaghi and H. Ahmadvand, *Iran. Biomed. J.*, 2007, **11**, 113–118.
- 40 M. R. Brodeur, L. Brissette, L. Falstraull, P. Ouellet and R. Moreau, *Free Radic. Biol. Med.*, 2008, **44**, 506–517.
- 41 F. Liu, Z. Wang, F. Liu, J. Xu, Q. Liu, K. Yin and J. Lan, *Cell Biosci.*, 2018, **8**, 55.
- 42 Q. Q. Wang, W. Li and B. C. Yang, *J. Biomed. Mater. Res. A*, 2011, **99**, 125–134.
- 43 A. M. Pereira, R. Machado, A. da Costa, A. Ribeiro, T. Collins, A. C. Gomes, I. B. Leonor, D. L. Kaplan, R. L. Reis and M. Casal, *Acta Biomater.*, 2017, **47**, 50–59.
- 44 P. P. Ming, S. Y. Shao, J. Qiu, J. Yang, Y. J. Yu, J. X. Chen, W. Q. Zhu and C. B. Tang, *Appl. Surf. Sci.*, 2017, **416**, 790–797.
- 45 M. Okayasu, M. Nakayachi, C. Hayashida, J. Ito, T. Kaneda, M. Masuhara, N. Suda, T. Sato and Y. Hakeda, *J. Biol. Chem.*, 2012, **287**, 19229–19241.
- 46 M. B. Tekin and H. Toker, *Int. J. Implant Dent.*, 2019, **15**, 18–25.